

ERRATUM

Erratum to: Voluntary action alters the perception of visual illusions

Matti Vuorre¹ · Janet Metcalfe¹

Published online: 18 May 2017
© The Psychonomic Society, Inc. 2017

Erratum to: Atten Percept Psychophys
DOI 10.3758/s13414-017-1321-x

Figures 2, 3, 4, 5 and 6 in the published article were not the ones submitted by the authors. Specifically, they were of lower quality than the submitted images, and missed credible intervals from each panel A. The correct figures appear below. The original article was corrected.

The online version of the original article can be found at <http://dx.doi.org/10.3758/s13414-017-1321-x>

✉ Matti Vuorre
mv2521@columbia.edu

¹ Psychology Department, Columbia University, 365 Schermerhorn, 1190 Amsterdam Avenue, New York, NY 10027, USA

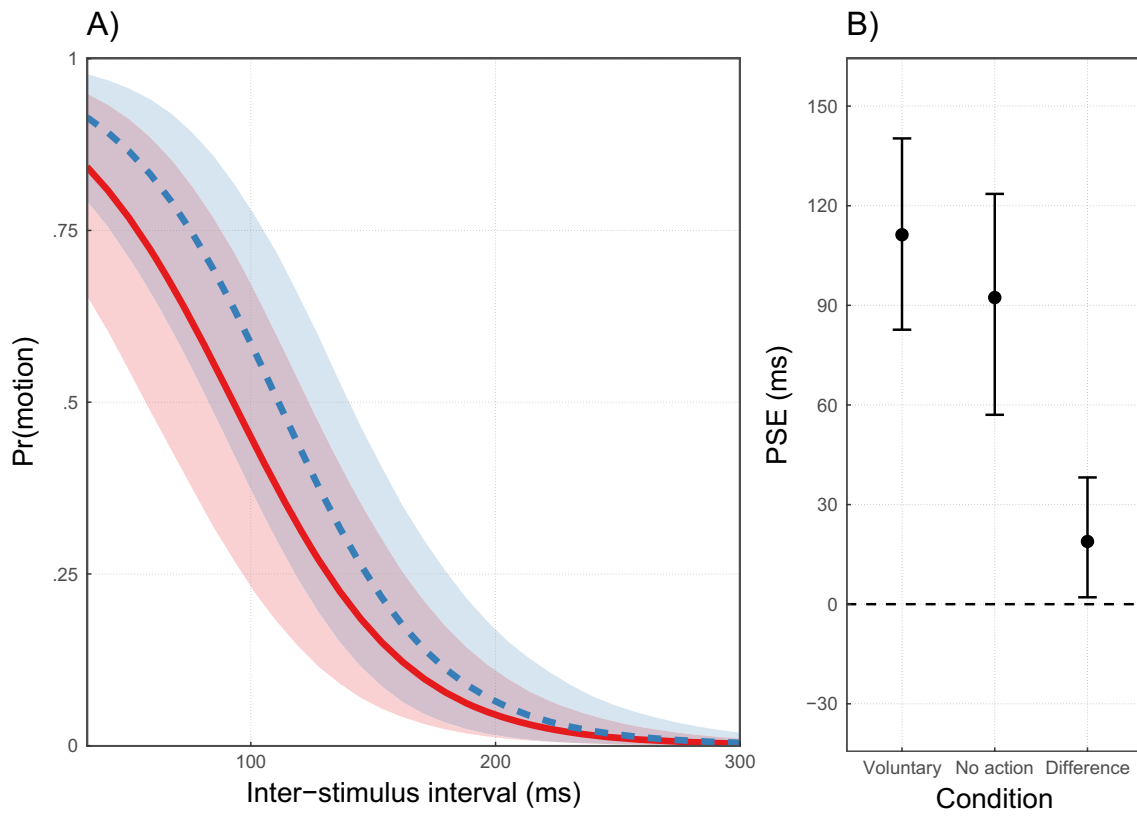


Fig. 2 Multilevel logistic regression model of the apparent motion task, Experiment 1. **(A)** Average model-predicted probabilities of apparent motion for the no-action (solid line) and voluntary-action (dashed line) conditions, with 95% credible intervals (CIs) as lighter shades of the

different line colors. **(B)** Points of subjective equality (PSEs) in both experimental conditions, as well as their difference (voluntary action–no action). Error bars indicate 95% CIs

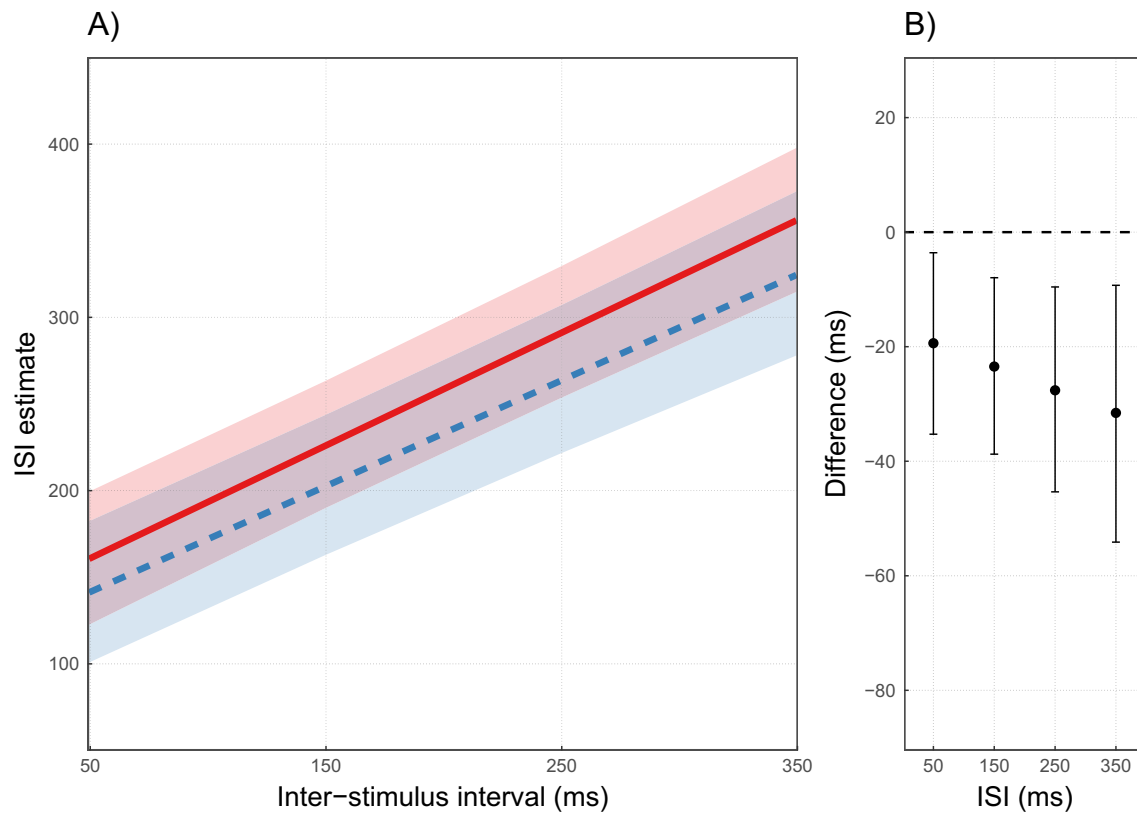


Fig. 3 Multilevel regression model of the interval estimation task in Experiment 1. **(A)** Average model-predicted interval estimates for the no-action (solid line) and voluntary-action (dashed line) conditions,

with 95% credible intervals (CIs) as lighter shades of the different line colors. **(B)** Difference in interval estimates (voluntary action–no action) for each ISI; error bars indicate 95% CIs

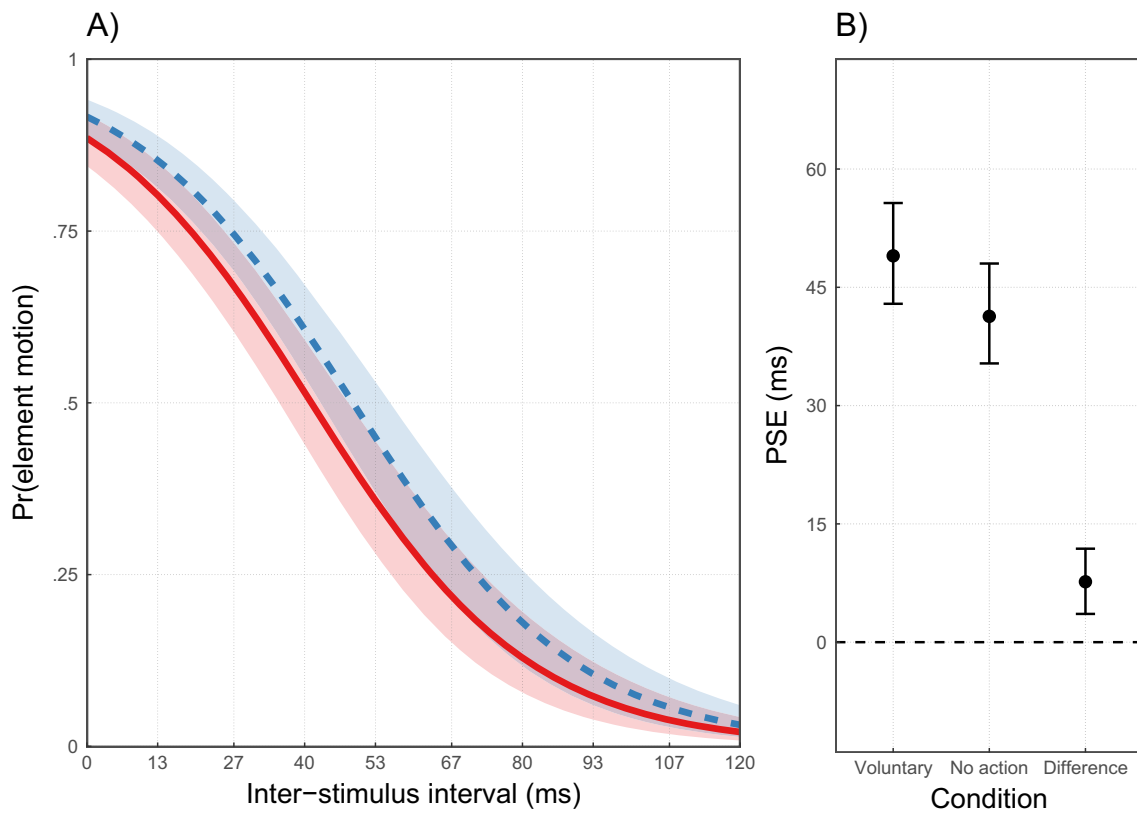


Fig. 4 Multilevel logistic regression model of the Temus display task in Experiment 2a. **(A)** Average model-predicted probabilities of element motion responses for the no-action (solid line) and voluntary-action (dashed line) conditions, with 95% credible intervals (CIs) as lighter

shades of the different line colors. **(B)** Points of subjective equality in both experimental conditions, and their difference (voluntary action–no action; error bars indicate 95% CIs)

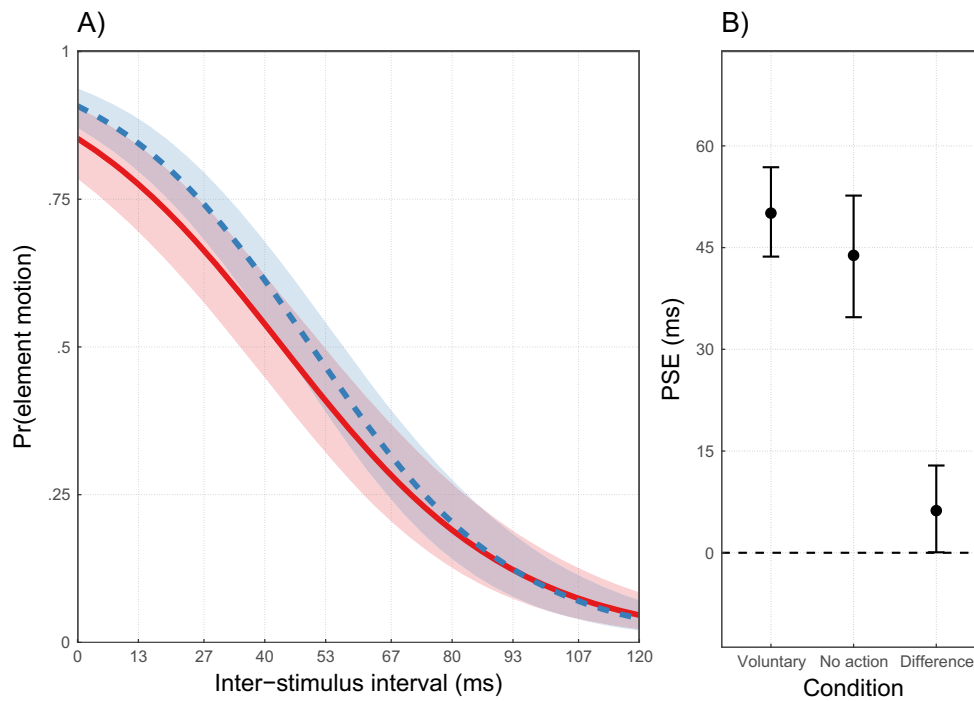


Fig. 5 Multilevel logistic regression model of the Temus display task in Experiment 2b. **(A)** Average model-predicted probabilities of element motion responses for the no-action (solid line) and voluntary-action (dashed line) conditions, with 95% credible intervals (CIs) as lighter

shades of the different line colors. **(B)** Points of subjective equality in both experimental conditions, and their difference (voluntary action–no action; error bars indicate 95% CIs)

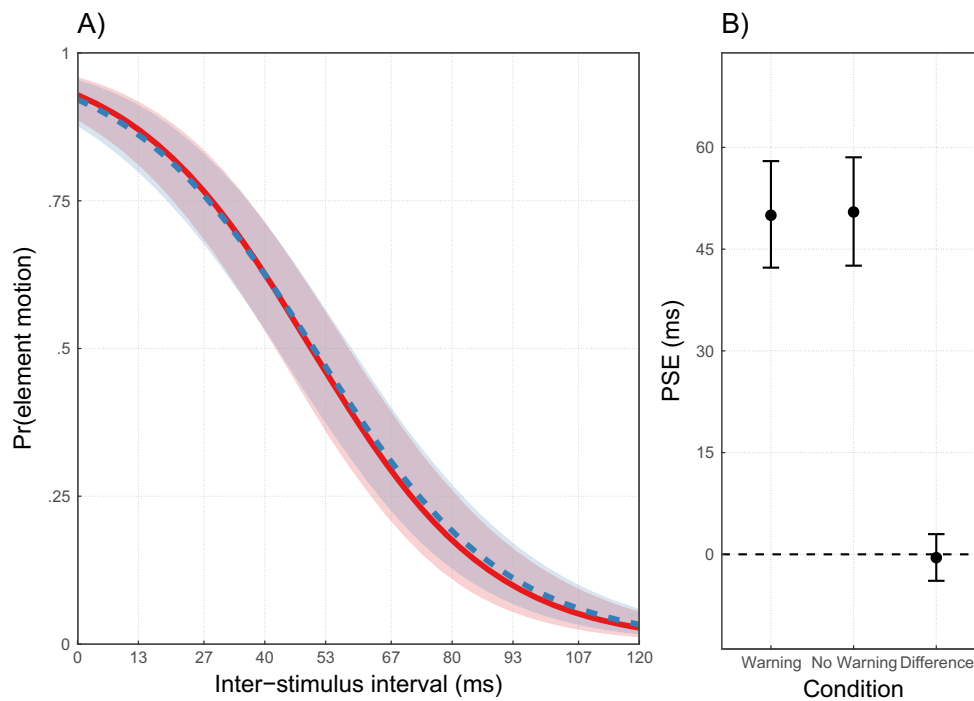


Fig. 6 Multilevel logistic regression model of the Temus display task in Experiment 3. **(A)** Average model-predicted probabilities of element motion responses for the no-warning (solid line) and warning sound (dashed line) conditions, with 95% credible intervals (CIs) as lighter

shades of the different line colors. **(B)** Points of subjective equality in both experimental conditions, and their difference (warning–no warning; error bars indicate 95% CIs)