



Correction to: Allelopathic interaction between two common meadow plants: *Dactylis glomerata* L. and *Trifolium pratense* L.

Katarzyna Możdżeń¹ · Beata Barabasz-Krasny¹ · Alina Stachurska-Swakoń² · Peiman Zandi³ · Joanna Puła⁴ · Yaosheng Wang³ · Ingrid Turisova⁵

Published online: 6 April 2020
© Slovak Academy of Sciences 2020

Correction to: *Biologia*

<https://doi.org/10.2478/s11756-020-00438-6>

Due to an internal figure processing error the article was published with erroneous renderings of Figs. 1, 2, and 3. The publisher regrets the error and this correction stands to note and correct the discrepancies. The original article has been corrected.

The online version of the original article can be found at <https://doi.org/10.2478/s11756-020-00438-6>

✉ Katarzyna Możdżeń
katarzyna.mozdzen@up.krakow.pl

¹ Institute of Biology, Pedagogical University of Krakow, Podchorążych 2, 30-084 Kraków, Poland

² Institute of Botany, Jagiellonian University, Gronostajowa 3, 30-387 Kraków, Poland

³ Institute of Environment and Sustainable Development in Agriculture, Chinese Academy of Agricultural Science, Beijing 100081, People's Republic of China

⁴ Faculty of Agriculture and Economics, University of Agriculture, Mickiewicza 21 Ave, 31-120 Kraków, Poland

⁵ Department of Biology and Ecology, Faculty of Natural Sciences, Matej Bel University in Banská Bystrica, Tajovského 40, 974 01 Banská Bystrica, Slovakia

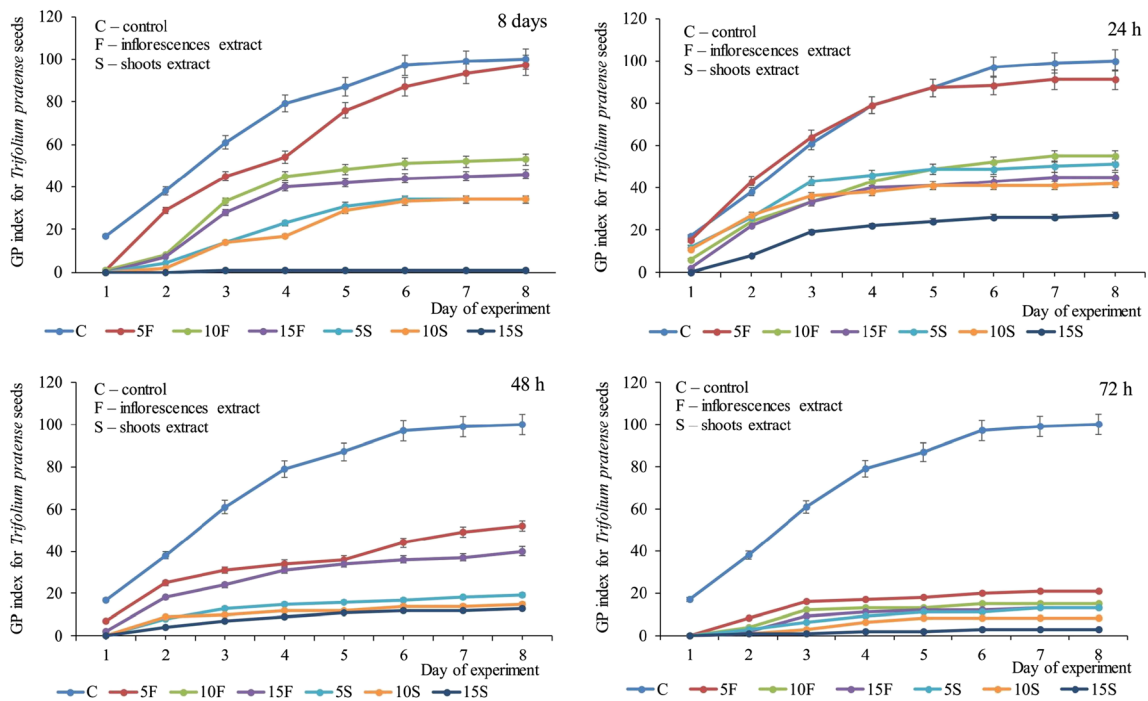


Fig. 1

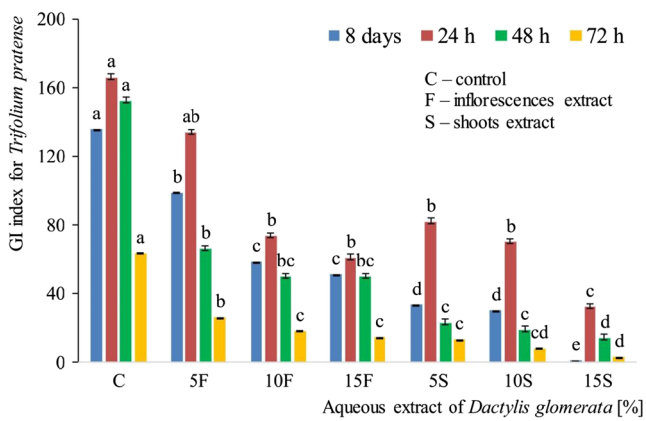


Fig. 2

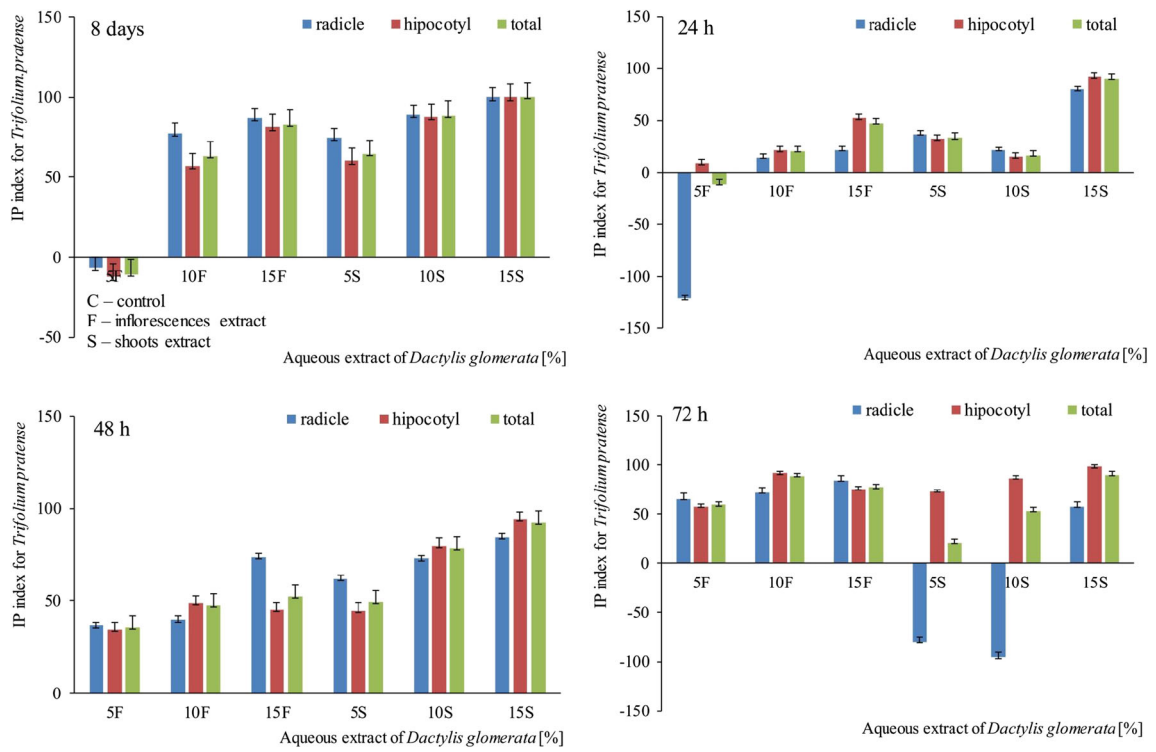


Fig. 3

Publisher's note Springer Nature remains neutral with regard to jurisdictional claims in published maps and institutional affiliations.