

ORIGINAL ARTICLE

Open Access



Evaluating diurnal variations in retinal perfusion using optical coherence tomography angiography

Felix Rommel^{1,2*} , Matthias Rothe^{1,2}, Maximilian Kurz^{1,2}, Michelle Prasuhn^{1,2}, Salvatore Grisanti¹ and Mahdy Ranjbar^{1,2}

Abstract

Background: Optical coherence tomography angiography (OCTA) is a non-invasive tool for imaging and quantifying the retinal and choroidal vasculature as well as perfusion state in healthy eyes. Choroidal perfusion is subject to diurnal variation, showing lowest perfusion in the morning and highest in the afternoon. In this index study, OCTA was used to investigate diurnal changes of the retinal perfusion in healthy adult eyes and to identify impacting factors since retinal perfusion is known to be mainly determined by autoregulatory mechanisms.

Methods: A prospective study was conducted on healthy volunteers, each of whom underwent repeated measurements of mean arterial pressure (MAP), intraocular pressure (IOP), macular volume (MV), subfoveal choroidal thickness (SFCT), foveal avascular zone (FAZ) and retinal perfusion of the superficial capillary plexus (SCP), deep capillary plexus (DCP) and full retina (FR) slab at 7 a.m. and 4 p.m. Possible influence of MAP or IOP on the retinal perfusion was evaluated.

Results: A total of 22 eyes of 22 participants (mean age 55.91 ± 14.84) were analysed. Significant diurnal changes from 7 a.m. to 4 p.m. were observed for MAP ($p < 0.001$) and SFCT ($p = 0.017$). The perfusion of SCP, DCP and FR as well as the size of the FAZ and the MV did not show significant fluctuation during the day. No significant correlation between MAP or IOP and retinal perfusion values were detectable.

Conclusion: OCTA-based analysis of the retina in healthy adults demonstrated a steady perfusion of both plexus during the day, independently of changes in MAP. These findings support the theory of autoregulatory mechanisms of the retinal blood flow.

Keywords: OCTA, Retinal perfusion, Diurnal variation, Foveal avascular zone, Macular volume, Superficial plexus, Deep plexus, Full retina, Autoregulation

Introduction

The microvascular network of the macula is affected in many diseases such as retinal vascular occlusion and diabetic retinopathy. The capillary density and the foveal avascular zone (FAZ) play an important role in central

vision and are good indicators for the progression of retinal diseases such as the above mentioned [1–3]. Information on changes in the macular capillary plexus is also important for a better understanding of macular diseases, its pathogenesis and prognosis. During the last 50 years, fundus fluorescein angiography (FA) has been the most popular tool to evaluate the retinal capillary perfusion and to obtain FAZ measurements. However, FA requires intravenous administration of contrast agent with possible adverse reactions [4]. Hence, follow-up

*Correspondence: felixrommel@gmail.com

¹ Department of Ophthalmology, University of Luebeck, Ratzeburger

Allee 160, 23538 Lübeck, Germany

Full list of author information is available at the end of the article



© The Author(s) 2020. This article is licensed under a Creative Commons Attribution 4.0 International License, which permits use, sharing, adaptation, distribution and reproduction in any medium or format, as long as you give appropriate credit to the original author(s) and the source, provide a link to the Creative Commons licence, and indicate if changes were made. The images or other third party material in this article are included in the article's Creative Commons licence, unless indicated otherwise in a credit line to the material. If material is not included in the article's Creative Commons licence and your intended use is not permitted by statutory regulation or exceeds the permitted use, you will need to obtain permission directly from the copyright holder. To view a copy of this licence, visit <http://creativecommons.org/licenses/by/4.0/>. The Creative Commons Public Domain Dedication waiver (<http://creativecommons.org/publicdomain/zero/1.0/>) applies to the data made available in this article, unless otherwise stated in a credit line to the data.

examinations to monitor and compare capillary perfusion and FAZ over time are difficult to obtain. With the recent development of OCTA the retinal vascular network can be assessed in vivo and in real time by creating slab-segmented angiograms [5].

Diurnal variations have previously been shown for intraocular pressure (IOP), axial length (AL) and subfoveal choroidal thickness (SFCT) [6, 7]. Recently, we demonstrated significant diurnal patterns in choroidal sublayer perfusion in healthy adults and eyes with epiretinal membrane in OCTA-based studies [8, 9]. Analysis of choroidal sublayer perfusion in healthy adults showed significant diurnal variation in Sattler's and Haller's layer perfusion. The lowest perfusion state was observed in the morning, the highest in the afternoon. Since the choroidal circulation is mainly controlled by autonomic innervation and retinal blood flow is mainly determined by autoregulatory mechanisms and local factors, we aimed to evaluate diurnal variations of retinal perfusion and the size of the FAZ using OCTA [10, 11].

Methods

Participants for this prospective observational study were recruited from the Department of Ophthalmology at the University of Lübeck. The study was approved by the institutional review board and was conducted in accordance with the Declaration of Helsinki. All subjects received detailed information about the study and written informed consent was obtained individually by each participant before enrolment. Any history of ocular or cardiovascular disease, antihypertensive drug use, as well as diabetes mellitus was defined as exclusion criteria. Ethnically all participants were Caucasian and they underwent a thorough examination including blood pressure (BP), refraction, best-corrected visual acuity (BCVA) in Snellen, IOP, AL, slit-lamp biomicroscopy, macular SD-OCT as well as OCTA. The maximum permissible spherical and cylindrical aberration was ± 3 and ± 1 diopters, respectively.

Imaging was performed on all subjects without prior pupil dilatation using the HS-100 (Canon, Tokyo, Japan) OCT/OCTA device at 7 a.m. and 4 p.m. by a single, trained operator. Each imaging session included OCT ($10 \times 10 \text{ mm}^2$) and OCTA ($3 \times 3 \text{ mm}^2$) volumetric scans of the posterior pole. The devices' follow-up mode was used to assure measurements at the same location for both time points. The HS-100 device works with a modified full-spectrum amplitude decorrelation algorithm to generate flow maps. Only OCTA scans with a signal strength ≥ 7 , centered on the fovea, and the absence of motion as well as segmentation and projection artifacts were considered [12, 13].

Macular volume (MV) was acquired for both time points according to the Early Treatment Diabetic Retinopathy Study (ETDRS) grid, which contains three concentric rings of diameters 1, 3 and 6 mm around the fovea and two reticules to divide the macula into nine sections [14]. SFCT was measured manually just below the fovea, extending perpendicularly from hyperreflective Bruch's membrane to the inner scleral border.

After acquisition, OCTA images were automatically segmented in all B-Scans according to the manufacturer's default setting to produce en face images of the superficial capillary plexus (SCP), deep capillary plexus (DCP) as well as a full retina (FR) slab (Fig. 1). The FAZ area (mm^2) was manually measured in the FR slab by two experienced graders (F.R. and M.Ro.) and the mean value was used for statistical analysis.

Each en face image was exported into ImageJ (NIH, Version 1.48b, Bethesda, USA) and binarized by the Otsu method, which is an automatic threshold selection from grey-level histograms, to determine the percentage of white and black pixels [15]. Retinal perfusion was calculated by scoring the percentage of white pixels in relation to number of total pixels, according to published protocols [8, 9, 16].

Statistical analyses were performed using IBM SPSS (Version 24.0, Chicago, IL, USA) and Prism GraphPad (Version 8.0, La Jolla, CA, USA). BCVA measurements in decimal Snellen were converted to logarithm of the minimum angle of resolution (logMAR). Mean arterial pressure (MAP) was calculated based on systolic and diastolic BP ($2/3$ diastolic BP + $1/3$ systolic BP). The Shapiro–Wilk test was used to check for normality of all obtained data. Diurnal changes in MAP, IOP, MV, SFCT, FAZ, SCP-, DCP- and FR-Perfusion were evaluated using Wilcoxon signed-rank test. The influence of changes in MAP, IOP and MV on macular perfusion was analyzed by Spearman's correlation analysis. Inter-rater agreement between the two graders measuring the FAZ area was evaluated using concordance correlation coefficient (CCC) along with its 95% confidence interval (CI).

Results

A total of 22 eyes of 22 healthy participants were recruited and included in the analysis. Demographic and clinical data are reported in Table 1. Laterality was assigned by chance, leading to 10 right eyes and 12 left eyes.

Table 2 outlines the diurnal variations of the collected data. MAP showed significant diurnal changes, increasing from the morning ($94.09 \pm 5.01 \text{ mmHg}$) to the afternoon ($99.91 \pm 7.44 \text{ mmHg}$) measurement ($p < 0.001$). SFCT revealed statistically significant changes during the course of the day as well, by dropping from $337 \pm 79.46 \text{ }\mu\text{m}$ to

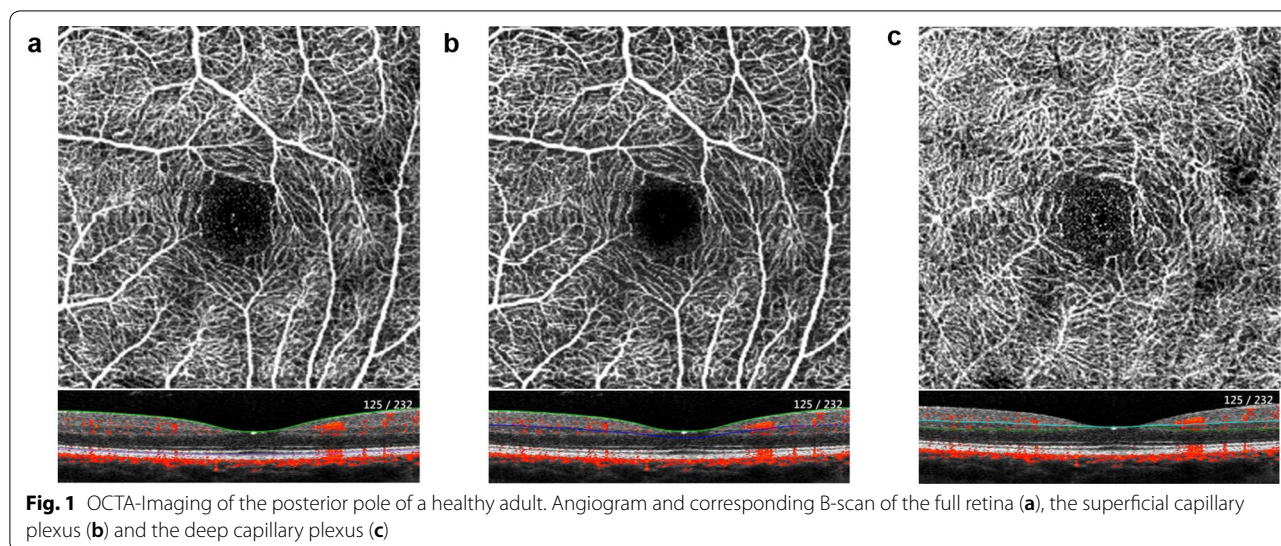


Fig. 1 OCTA-Imaging of the posterior pole of a healthy adult. Angiogram and corresponding B-scan of the full retina (a), the superficial capillary plexus (b) and the deep capillary plexus (c)

Table 1 Demographic and clinical data

Parameter	Mean ± SD	Median (min; max)
Age (years)	55.91 ± 14.84	59.5 (28; 76)
Sex (F/M)	12 (54.5%)/10 (45.5%)	
Axial length (mm)	23.83 ± 1.38	24.11 (21.83; 26.63)
BCVA (logMAR)	0.04 ± 0.05	0.00 (0.00; 0.10)

F female, M male, SD standard deviation, BCVA best-corrected visual acuity

Table 2 Diurnal changes in mean arterial pressure (MAP), intraocular pressure (IOP), macular volume (MV), foveal avascular zone (FAZ), superficial capillary plexus perfusion (SCP-P), deep capillary plexus perfusion (DCP-P), full-retina perfusion (FR-P), and subfoveal choroidal thickness (SFCT) are shown

Parameter	7 a.m. (Mean ± SD)	4 p.m. (Mean ± SD)	Wilcoxon signed-rank (p-value)
MAP (mmHg)	94.09 ± 5.01	99.91 ± 7.44	< 0.001
IOP (mmHg)	14.7 ± 3.0	14.5 ± 3.0	0.610
MV (mm ³)	8.61 ± 0.33	8.64 ± 0.33	0.283
FAZ (mm ²)	0.339 ± 0.119	0.336 ± 0.114	0.514
SCP-P (%)	29.16 ± 3.86	30.89 ± 5.99	0.189
DCP-P (%)	40.43 ± 3.93	40.98 ± 3.99	0.661
FR-P (%)	33.46 ± 4.67	35.08 ± 5.83	0.223
SFCT (µm)	337 ± 79.46	318.18 ± 74.57	0.017

Test values of p < 0.05 were considered statistically significant

318.18 ± 74.57 µm (p = 0.017). IOP stayed steady from 7 a.m. (14.7 ± 3.0 mmHg) to 4 p.m. (14.5 ± 3.0 mmHg, p = 0.61). Likewise, MV did not show any significant fluctuation (8.61 ± 0.33 mm³ vs. 8.64 ± 0.33 mm³, p = 0.283).

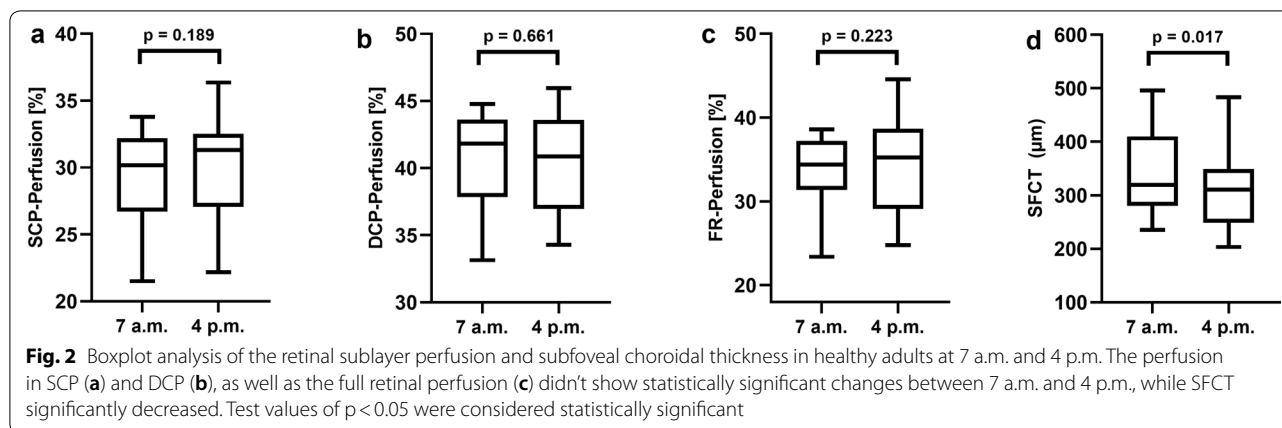
Inter-rater CCCs of FAZ area measurements were 0.995 (95% CI 0.988 to 0.998) at 7 a.m. and 0.996 (95% CI 0.991 to 0.999) at 4 p.m., respectively. The mean measured size of the FAZ was 0.339 ± 0.119 mm² in the morning and 0.336 ± 0.114 mm² in the afternoon and didn't show any statistically significant difference (p = 0.514).

Perfusion measurements of the retina slabs didn't reveal any significant diurnal fluctuations either (Fig. 2). Both, SCP- and DCP perfusion, showed a slight but not significant increase from 7 a.m. to 4 p.m. Perfusion in SCP went from 29.16 ± 3.86% in the morning to 30.89 ± 5.99% in the afternoon (p = 0.189) while DCP perfusion went from 40.43 ± 3.93% to 40.98 ± 3.99% (p = 0.661). Accordingly, perfusion of the FR slab did not show significant diurnal variation between 7 a.m. and 4 p.m. (33.46 ± 4.67% vs. 35.08 ± 5.83%, p = 0.223).

Further analysis did not reveal any significant correlation between diurnal changes of MAP and perfusion changes of SCP (r = -0.32; p = 0.142), DCP (r = 0.04; p = 0.873) or FR (r = -0.15; p = 0.497). Likewise, changes of IOP during the day did not significantly influence the perfusion of SCP (r = 0.13; p = 0.564), DCP (r = -0.14; p = 0.528) or FR (r = -0.02; p = 0.923).

Discussion

To the best of our knowledge, this study is the first to evaluate diurnal changes in retinal perfusion by OCTA in healthy adults. Neither the perfusion in FR nor in SCP and DCP showed significant diurnal patterns between 7 a.m. and 4 p.m. However, our results of a significant decrease in SFCT during the day are consistent with previous studies regarding diurnal changes in SFCT [7, 18]. Although MAP significantly increased from morning to afternoon, the retinal perfusion stayed steady during the



day. These results differ from findings of diurnal variation in choroidal perfusion. The healthy choroid, in particular Sattler's and Haller's layer, is known to be subject to diurnal variation [8, 17, 18]. Our recent OCTA-based study demonstrated a quadratic relation of the perfusion in both sublayers to time of the day, with the lowest perfusion state at 7 a.m. and the highest at 4 p.m. [8]. Several studies demonstrated the dependence of choroidal blood flow on MAP and even IOP due to poor autoregulation [8, 19, 20]. The present study indicates the independence of the retinal blood flow on changes of systemic blood pressure due to autoregulatory mechanisms. While choroidal blood flow underlays diurnal variation, retinal blood flow seems to stay steady during the day. Previous studies using laser Doppler velocimetry have already demonstrated, that changes in systemic perfusion pressure have only a negligible influence on retinal blood flow [10, 11, 21, 22]. The responsible mechanism for the insensitivity to systemic changes in perfusion pressure within the retinal circulation seems to be the absence of neuronal innervation in retinal vascular beds in contrast to the choroid. While histological studies have revealed a rich supply of autonomic vasoactive innervation for the choroid, the nerves do not go further into the retina [23, 24]. Therefore retinal blood flow is mainly under autoregulation by both myogenic and local metabolic mechanisms [25, 26]. The exact mechanisms are still unclear and focus of research. This study supports the theory of a steady retinal blood flow due to autoregulation in contrast to the choroidal blood flow with a diurnal pattern.

In contrast to our data, Müller et al. showed diurnal fluctuation of the macular flow density in the DCP in primary open-angle glaucoma (POAG) patients with a slight increase during the day [27]. The perfusion in SCP did not change significantly, consistent with our findings. Interestingly, they found a positive correlation between the flow density in SCP and MAP. These results indicate

that patients with POAG may have reduced autoregulatory capacity of the retinal vascular network. This hypothesis is supported by the study of Evans et al. who compared the changes in retrobulbar ocular blood flow in POAG patients with healthy controls during supine and upright posture [28]. They conclude that glaucoma patients exhibit vascular autoregulatory abnormalities in the vessels distal to the central retinal artery.

Our study demonstrates a constant size of the FAZ during the course of the day, which is an important finding for studies dealing with FAZ measurements. OCTA has been reported as sensitive regarding alterations of the FAZ size and shape, which deals as an important parameter of retinal capillary integrity [3, 29, 30]. This biomarker might even have prognostic significance as enlargement of the FAZ, which has been found in ischemic diseases such as retinal vein occlusion or diabetic retinopathy, is associated with poor visual outcome [3, 31]. Since the size of the FAZ in healthy adults seems to stay steady during the day, it is not important to account for time of the day when comparing longitudinal OCTA data. Our mean measured FAZ size of $0.339 \pm 0.119 \text{ mm}^2$ at 7 a.m. and $0.336 \pm 0.114 \text{ mm}^2$ at 4 p.m. are comparable to previously published data [5, 32–34]. Furthermore, inter-rater agreement of the two graders measuring the FAZ dimensions was very high with CCCs of 0.995 at 7 a.m. and 0.996 at 4 p.m., respectively. These results indicate optimal inter-rater repeatability for manual FAZ measurements in $3 \times 3 \text{ mm}^2$ OCTA scans and they are consistent with previous reported high CCCs [35, 36]. OCT scans of the macula did not show significant changes in MV between 7 a.m. and 4 p.m. in our healthy study population. Several studies reported diurnal variations in macular thickness or MV in macular disease patients such as retinal vein occlusions and diabetic retinopathy [37–39]. The proposed mechanisms include the effect of gravity and hydrostatic pressure, nocturnal hypotension

and changes in retinal metabolism. There are only limited studies in literature dealing with diurnal changes of MV in healthy adults. Ashraf and Nowroozadeh examined MV in SD-OCT for three different time points [40]. They found a slight diurnal variation for the nasal and inferior ETDRS subfield with a greater MV at 7 a.m. than at 7 p.m. However, as in our study, they did not detect diurnal changes in total MV of healthy retinas. Jo et al. didn't detect any significant diurnal variation in MV either by measuring at two different time points using SD-OCT [41]. In conclusion, the intact blood-retinal barrier, in contrast to macular diseases with an edema, may resist diurnal hydrostatic changes which lead to a steady MV.

The present study has some limitations. As we only examined participants at 7 a.m. and 4 p.m., we may have missed out on important information of the retinal perfusion at other times. The scanned area of $3 \times 3 \text{ mm}^2$ only represents a small, but very important part of the retina. A wider range of examination area may provide higher meaningfulness. Furthermore, the manual measurement of the FAZ size may represent a potential bias. To reduce this possible confounding factor, all measurements were performed in a masked fashion by two experienced graders and the average values were used for statistical analysis. In addition, our methodical approach is restricted by using a single OCTA device since perfusion values differ from device to device, depending on hardware, segmentation and software algorithms. Finally, the sample size represents a potential limiting factor leading to a mainly exploratory data analysis. To corroborate our findings, further studies with a larger number of participants will be necessary.

Conclusion

In conclusion, OCTA is becoming an important non-invasive tool for imaging and quantifying the retinal vasculature and perfusion state. The present study is the first to evaluate diurnal changes in retinal perfusion by using OCTA in healthy adults. The full retinal perfusion, as well as the sublayer perfusion in SCP and DCP stayed steady during the course of the day although MAP showed significant fluctuations. These findings support the theory of autoregulatory mechanisms and local metabolites to control the retinal blood flow, independently of changes in systemic BP.

Abbreviations

AL: Axial length; BCVA: Best-corrected visual acuity; BP: Blood pressure; DCP: Deep capillary plexus; ETDRS: Early Treatment Diabetic Retinopathy Study; FA: Fluorescein angiography; FAZ: Foveal avascular zone; FR: Full-retina; IOP: Intraocular pressure; MAP: Mean arterial pressure; MV: Macular volume; OCT: Optical coherence tomography; OCTA: Optical coherence tomography angiography; POAG: Primary open-angle glaucoma; SCP: Superficial capillary plexus.

Acknowledgements

The authors like to thank Burkhard Zander (Eyeteq, Lübeck, Germany) and Ori Zahavi (Canon Europe, Amselveen, Netherlands) for technical support regarding the OCTA device.

Authors' contributions

FR: study concept and design, acquisition of data, data analysis and interpretation, manuscript drafting. MRO: acquisition of data, data analysis and interpretation. MK: acquisition of data, data analysis. MP: acquisition of data, data analysis. SG: manuscript revision and final approval. MR: study concept and design, manuscript revision, final approval. All authors read and approved the final manuscript.

Funding

There was no funding received for this study.

Availability of data and materials

The datasets used and analyzed during the current study are available from the corresponding author on reasonable request.

Ethics approval and consent to participate

Ethical approval was given by the institutional review board at the University of Lübeck (vote reference number 17-008). The study was conducted in accordance with the Declaration of Helsinki. Written informed consent was obtained from each subject before enrolment.

Consent for publication

Not applicable.

Competing interests

The authors declare that they have no competing interests.

Author details

¹ Department of Ophthalmology, University of Luebeck, Ratzeburger Allee 160, 23538 Lübeck, Germany. ² Laboratory for Angiogenesis & Ocular Cell Transplantation, University of Luebeck, Ratzeburger Allee 160, 23538 Lübeck, Germany.

Received: 25 November 2019 Accepted: 27 May 2020

Published online: 03 June 2020

References

1. Arend O, Wolf S, Harris A, Reim M. The relationship of macular microcirculation to visual acuity in diabetic patients. *Arch Ophthalmol Chic Ill*. 1995;113(5):610–4.
2. Durbin MK, An L, Shemonski ND, Soares M, Santos T, Lopes M, et al. Quantification of retinal microvascular density in optical coherence tomographic angiography images in diabetic retinopathy. *JAMA Ophthalmol*. 2017;135(4):370–6.
3. Balaratnasingam C, Inoue M, Ahn S, McCann J, Dhrami-Gavazi E, Yannuzzi LA, et al. Visual acuity is correlated with the area of the foveal avascular zone in diabetic retinopathy and retinal vein occlusion. *Ophthalmology*. 2016;123(11):2352–67.
4. Jennings BJ, Mathews DE. Adverse reactions during retinal fluorescein angiography. *J Am Optom Assoc*. 1994;65(7):465–71.
5. Rommel F, Siegfried F, Kurz M, Brinkmann MP, Rothe M, Rudolf M, et al. Impact of correct anatomical slab segmentation on foveal avascular zone measurements by optical coherence tomography angiography in healthy adults. *J Curr Ophthalmol*. 2018;30(2):156–60.
6. Chakraborty R, Read SA, Collins MJ. Diurnal variations in axial length, choroidal thickness, intraocular pressure, and ocular biometrics. *Invest Ophthalmol Vis Sci*. 2011;52(8):5121–9.
7. Tan CS, Ouyang Y, Ruiz H, Sadda SR. Diurnal variation of choroidal thickness in normal, healthy subjects measured by spectral domain optical coherence tomography. *Invest Ophthalmol Vis Sci*. 2012;53(1):261–6.
8. Siegfried F, Rommel F, Rothe M, Brinkmann MP, Sochurek JAM, Freitag J, et al. Evaluating diurnal changes in choroidal sublayer perfusion using optical coherence tomography angiography. *Acta Ophthalmol*. 2019;97:1062–8.

9. Rommel F, Siegfried F, Sochurek JAM, Rothe M, Brinkmann MP, Kurz M, et al. Mapping diurnal variations in choroidal sublayer perfusion in patients with idiopathic epiretinal membrane: an optical coherence tomography angiography study. *Int J Retina Vit*. 2019;5:12.
10. Robinson F, Riva CE, Grunwald JE, Petrig BL, Sinclair SH. Retinal blood flow autoregulation in response to an acute increase in blood pressure. *Invest Ophthalmol Vis Sci*. 1986;27(5):722–6.
11. Dumskjy MJ, Eriksen JE, Doré CJ, Kohner EM. Autoregulation in the human retinal circulation: assessment using isometric exercise, laser Doppler velocimetry, and computer-assisted image analysis. *Microvasc Res*. 1996;51(3):378–92.
12. Laueremann JL, Woetzel AK, Treder M, Alnawaiseh M, Clemens CR, Eter N, et al. Prevalences of segmentation errors and motion artifacts in OCT-angiography differ among retinal diseases. *Graefes Arch Clin Exp Ophthalmol Albrecht Von Graefes Arch Klin Exp Ophthalmol*. 2018;256(10):1807–16.
13. Spaide RF, Fujimoto JG, Waheed NK, Sadda SR, Staurengli G. Optical coherence tomography angiography. *Prog Retin Eye Res*. 2018;64:1–55.
14. Early Treatment Diabetic Retinopathy Study Research Group. Grading diabetic retinopathy from stereoscopic color fundus photographs—an extension of the modified Airlie House classification. ETDRS report number 10. *Ophthalmology*. 1991;98(5 Suppl):786–806.
15. Otsu N. A threshold selection method from gray-level histograms. *IEEE Trans Syst Man Cybern*. 1979;9(1):62–6.
16. Nicolò M, Rosa R, Musetti D, Musolino M, Saccheggiani M, Traverso CE. Choroidal vascular flow area in central serous chorioretinopathy using swept-source optical coherence tomography angiography. *Invest Ophthalmol Vis Sci*. 2017;58(4):2002–10.
17. Iwase T, Yamamoto K, Ra E, Murotani K, Matsui S, Terasaki H. Diurnal variations in blood flow at optic nerve head and choroid in healthy eyes: diurnal variations in blood flow. *Medicine*. 2015;94(6):e519.
18. Sarwar S, Hassan M, Soliman MK, Halim MS, Sadiq MA, Afridi R, et al. Diurnal variation of choriocapillaris vessel flow density in normal subjects measured using optical coherence tomography angiography. *Int J Retina Vit*. 2018;4:37.
19. Polak K, Polska E, Luksch A, Dorner G, Fuchsjäger-Mayrl G, Findl O, et al. Choroidal blood flow and arterial blood pressure. *Eye Lond Engl*. 2003;17(1):84–8.
20. Polska E, Simader C, Weigert G, Doelemeyer A, Kolodjaschna J, Scharmann O, et al. Regulation of choroidal blood flow during combined changes in intraocular pressure and arterial blood pressure. *Invest Ophthalmol Vis Sci*. 2007;48(8):3768–74.
21. Rassam SMB, Patel V, Chen HC, Kohner EM. Regional retinal blood flow and vascular autoregulation. *Eye*. 1996;10(3):331–7.
22. Flammer J, Mozaffarieh M. Autoregulation, a balancing act between supply and demand. *Can J Ophthalmol J Can Ophtalmol*. 2008;43(3):317–21.
23. Ehinger B. Distribution of adrenergic nerves in the eye and some related structures in the cat. *Acta Physiol Scand*. 1966;66(1):123–8.
24. Laties AM. Central retinal artery innervation. Absence of adrenergic innervation to the intraocular branches. *Arch Ophthalmol Chic Ill 1960*. 1967;77(3):405–9.
25. Haefliger IO, Meyer P, Flammer J, Lüscher TF. The vascular endothelium as a regulator of the ocular circulation: a new concept in ophthalmology? *Surv Ophthalmol*. 1994;39(2):123–32.
26. Luo X, Shen Y, Jiang M, Lou X, Shen Y. Ocular blood flow autoregulation mechanisms and methods. *J Ophthalmol*. 2015. <https://www.hindawi.com/journals/joph/2015/864871/>. Accessed 23 June 2019.
27. Müller VC, Storp JJ, Kerschke L, Nelis P, Eter N, Alnawaiseh M. Diurnal variations in flow density measured using optical coherence tomography angiography and the impact of heart rate, mean arterial pressure and intraocular pressure on flow density in primary open-angle glaucoma patients. *Acta Ophthalmol (Copenh)*. 2019;97(6):e844–9.
28. Evans DW, Harris A, Garrett M, Chung HS, Kagemann L. Glaucoma patients demonstrate faulty autoregulation of ocular blood flow during posture change. *Br J Ophthalmol*. 1999;83(7):809–13.
29. Samara WA, Shahlaee A, Adam MK, Khan MA, Chiang A, Maguire JL, et al. Quantification of diabetic macular ischemia using optical coherence tomography angiography and its relationship with visual acuity. *Ophthalmology*. 2017;124(2):235–44.
30. Li Z, Alzogool M, Xiao J, Zhang S, Zeng P, Lan Y. Optical coherence tomography angiography findings of neurovascular changes in type 2 diabetes mellitus patients without clinical diabetic retinopathy. *Acta Diabetol*. 2018;55(10):1075–82.
31. Minnella AM, Savastano MC, Federici M, Falsini B, Caporossi A. Superficial and deep vascular structure of the retina in diabetic macular ischaemia: OCT angiography. *Acta Ophthalmol*. 2018;96(5):e647–8.
32. Shahlaee A, Pefkianaki M, Hsu J, Ho AC. Measurement of foveal avascular zone dimensions and its reliability in healthy eyes using optical coherence tomography angiography. *Am J Ophthalmol*. 2016;161(50–55):e1.
33. Garrity ST, Iafe NA, Phasukkijwatana N, Chen X, Sarraf D. Quantitative analysis of three distinct retinal capillary plexuses in healthy eyes using optical coherence tomography angiography. *Invest Ophthalmol Vis Sci*. 2017;58(12):5548–55.
34. Magrath GN, Say EAT, Sioufi K, Ferenczy S, Samara WA, Shields CL. Variability in foveal avascular zone and capillary density using optical coherence tomography angiography machines in healthy eyes. *Retina*. 2017;37(11):2102–11.
35. La Spina C, Carnevali A, Marchese A, Querques G, Bandello F. Reproducibility and reliability of optical coherence tomography angiography for foveal avascular zone evaluation and measurement in different settings. *Retina*. 2017;37(9):1636–41.
36. Carpineto P, Mastropasqua R, Marchini G, Toto L, Di Nicola M, Di Antonio L. Reproducibility and repeatability of foveal avascular zone measurements in healthy subjects by optical coherence tomography angiography. *Br J Ophthalmol*. 2016;100(5):671–6.
37. Gupta B, Grewal J, Adewoyin T, Pelosini L, Williamson TH. Diurnal variation of macular oedema in CRVO: prospective study. *Graefes Arch Clin Exp Ophthalmol Albrecht Von Graefes Arch Klin Exp Ophthalmol*. 2009;247(5):593–6.
38. Frank RN, Schulz L, Abe K, Iezzi R. Temporal variation in diabetic macular edema measured by optical coherence tomography. *Ophthalmology*. 2004;111(2):211–7.
39. Diabetic Retinopathy Clinical Research Network, Danis RP, Glassman AR, Aiello LP, Antoszyk AN, Beck RW, et al. Diurnal variation in retinal thickening measurement by optical coherence tomography in center-involved diabetic macular edema. *Arch Ophthalmol Chic Ill 1960*. 2006;124(12):1701–7.
40. Ashraf H, Nowroozzadeh MH. Diurnal variation of retinal thickness in healthy subjects. *Optom Vis Sci Off Publ Am Acad Optom*. 2014;91(6):615–23.
41. Jo Y-J, Heo D-W, Shin Y-I, Kim J-Y. Diurnal variation of retina thickness measured with time domain and spectral domain optical coherence tomography in healthy subjects. *Invest Ophthalmol Vis Sci*. 2011;52(9):6497–500.

Publisher's Note

Springer Nature remains neutral with regard to jurisdictional claims in published maps and institutional affiliations.