

ORIGINAL ARTICLE

Open Access



DUXAP8, a pseudogene derived lncRNA, promotes growth of pancreatic carcinoma cells by epigenetically silencing CDKN1A and KLF2

Yifan Lian^{1,2}, Jiebin Yang^{1,2}, Yikai Lian^{1,2}, Chuangxing Xiao^{1,2}, Xuezhen Hu^{3*} and Hongzhi Xu^{1,2*}

Abstract

Background: Recent studies highlight pseudogene derived long non-coding RNAs (lncRNAs) as key regulators of cancer biology. However, few of them have been well characterized in pancreatic cancer. Here, we aimed to identify the association between pseudogene derived lncRNA *DUXAP8* and growth of pancreatic cancer cells.

Methods: We screened for pseudogene derived lncRNAs associated with human pancreatic cancer by comparative analysis of three independent datasets from GEO. Quantitative real-time reverse transcription polymerase chain reaction was used to assess the relative expression of *DUXAP8* in pancreatic cancer tissues and cells. Loss-of-function approaches were used to investigate the potential functional roles of *DUXAP8* in pancreatic cancer cell proliferation and apoptosis in vitro and in vivo. RNA immunoprecipitation, chromosome immunoprecipitation assay and rescue experiments were performed to analyze the association of *DUXAP8* with target proteins and genes in pancreatic cancer cells.

Results: Pancreatic cancer tissues had significantly higher *DUXAP8* levels than paired adjacent normal tissues. High *DUXAP8* expression was associated with a larger tumor size, advanced pathological stage and shorter overall survival of pancreatic cancer patients. Moreover, silencing *DUXAP8* expression by siRNA or shRNA inhibited pancreatic cancer cell proliferation and promoted apoptosis in vitro and in vivo. Mechanistic analyses indicated that *DUXAP8* regulates PC cell proliferation partly through downregulation of tumor suppressor CDKN1A and KLF2 expression.

Conclusion: Our results suggest that tumor expression of pseudogene derived lncRNA *DUXAP8* plays an important role in pancreatic cancer progression. *DUXAP8* may serve as a candidate biomarker and represent a novel therapeutic target of pancreatic cancer.

Keywords: Pancreatic cancer, Proliferation, Pseudogene, *DUXAP8*, CDKN1A, KLF2

Background

Pancreatic cancer currently remains one of the most lethal malignancies of the digestive system [1]. In developed countries, it was estimated that 187,500 people were diagnosed with pancreatic cancer in 2012, and 184,400 succumbed to the disease [2]. Progresses in several fronts including early detection, surgical intervention, systemic

chemotherapy and targeted therapy have led to further improvements in the treatment of pancreatic cancer [3], but has not been translated into clinical benefits: the five-year overall survival (OS) rate of pancreatic cancer patients remains at only 5% [4]. The dismal outcome of pancreatic cancer patients highlights the importance of understanding the molecular mechanisms underlying progression of pancreatic cancer, which so far remain poorly defined. Therefore, it would be of great clinical relevance and significance to identify novel diagnostic and/or prognostic biomarkers associated with progression of pancreatic cancer.

*Correspondence: njhxzh@126.com; xhzxmzsh@aliyun.com

¹ Department of Gastroenterology, Zhongshan Hospital, Xiamen University, Xiamen 361005, Fujian, P. R. China

³ Jiangsu Province Hospital of TCM, Affiliated Hospital of Nanjing University of TCM, Nanjing 210029, Jiangsu, P. R. China

Full list of author information is available at the end of the article



Whole genome and transcriptome sequencing technologies have gradually shed light on the makeup of the human genome, less than 2% of which are protein coding genes with the remaining being non-coding genes including pseudogenes, microRNA genes, and long non-coding RNA (lncRNA) genes [5, 6]. Pseudogenes are the results of gene duplications, with the duplicated genes having lost their protein-coding capacity through such molecular events as point or frameshift mutations [6, 7]. Intriguingly, it is becoming increasingly apparent that many pseudogenes are transcribed into long non-coding RNAs, with confirmed biological functions in transcriptional or post-transcriptional regulation of gene expression by functioning as scaffold for distinct protein complexes or endogenous competitors for microRNA (miRNA) [8]. Several studies have demonstrated the biological roles of certain classical pseudogenes, including *POU5F1B*, *PTENP1* and *DUXAP10* in human cancers [9–11]. However, similar to lncRNAs, the functions of pseudogenes in pancreatic cancer require further investigation.

Previous studies indicated that pseudogenes derived lncRNAs could also regulate gene expression through other mechanisms, such as binding with certain RNA-binding proteins, as well as regulating target genes by lncRNAs [12, 13]. For example, Wei et al. [11] reported that pseudogene *DUXAP10* promotes cell proliferation and invasion through interacting with LSD1 and repressing LATS2 and RRAD in non-small-cell lung cancer. Guo et al. reported that pseudogene *PTENP1* suppresses gastric cancer aggressive phenotype by modulating PTEN expression [14].

In the current study, we sought to investigate the association between DUXAP8 expression and OS of pancreatic cancer patients and further delineate the effects of DUXAP8 on the growth of pancreatic cancer cells both in vitro and in vivo and the underlying mechanism. This study provides the first direct evidence that DUXAP8 is a critical and powerful regulator of genes involved in pancreatic cancer progression through silencing CDKN1A and KLF2 in the nucleus, indicating that DUXAP8 is a potential therapeutic target of pancreatic cancer.

Methods

Ethics statement

The study protocol was approved by the Research Ethics Committee of Xiamen University, Xiamen, Fujian, China. Written informed consent form was obtained from all patients. The handling of human tissue specimens was in full accordance with the relevant institutional and national guidelines and regulations. All patient data were de-identified for analysis and anonymized. Animal study was carried out in strict

accordance with the USA Guide for the Care and Use of Laboratory Animals of the National Institutes of Health.

Microarray and computational analysis

Three human microarray data sets including GSE16515, GSE15932 and GSE15471 were downloaded from the Gene Expression Omnibus (GEO) database (<http://www.ncbi.nlm.nih.gov/geo>) and normalized using Robust Multichip Average (RMA). The probe sequences were downloaded from GEO, and bowtie was used to re-annotate probes according to the GENCODE Release 19 annotation for pseudogenes or lncRNAs.

Tissue acquisition

A total of 58 treatment-naïve patients undergoing resection of pathologically confirmed pancreatic ductal adenocarcinoma (PDAC) at Zhongshan Hospital, Xiamen University, Xiamen, Fujian, China between 2007 and 2012, were included in the study. All tissue samples were snap frozen in liquid nitrogen and stored at -80°C until use. The clinicopathologic characteristics of the patients are summarized in Table 1.

Table 1 Correlation between DUXAP8 expression and clinicopathologic characteristics of patients with PDAC

Characteristics	N	Percent (%)	DUXAP8 level		P
			Low	High	
Total cases	58	100	29	29	
Gender					0.790
Male	34	58.6	16	18	
Female	24	41.4	13	11	
Age (years)					1.000
< 65	29	50.0	14	15	
≥ 65	29	50.0	15	14	
Tumor size					0.033
< 3 cm	25	43.1	17	8	
≥ 3 cm	33	56.9	12	21	
Differentiation					0.289
Well/moderate	25	43.1	15	10	
Poor	33	56.9	14	19	
TNM stage					0.034
I/II	27	46.6	18	9	
III/IV	31	53.4	11	20	
Lymph-node metastasis					0.065
Negative	30	51.7	19	11	
Positive	28	48.3	10	18	

Quantitative reverse transcription polymerase chain reaction (qRT-PCR) assays

Total cellular RNA was extracted from pancreatic cancer cells or tissues using TRIZOL reagent (Invitrogen, Carlsbad, CA, USA). RNA quantity was determined by NanoDrop2000c (Thermo Scientific, Waltham, MA, USA). For qRT-PCR, 1 µg RNA was reverse transcribed to cDNA using a Reverse Transcription Kit (Takara, Dalian, China). The qRT-PCR assays were conducted on an ABI 7500. Target gene expression was normalized against *GAPDH*. The primer sequences are listed in Additional file 1: Table S1.

Cells

Pancreatic cancer cells (AsPC-1, BxPC-3, and PANC-1) and normal human pancreatic HPDE6 cell lines were obtained from the Institute of Biochemistry and Cell Biology of the Chinese Academy of Sciences (Shanghai, China), and maintained in RPMI 1640 or DMEM (Invitrogen, Shanghai, China) supplemented with 10% fetal bovine serum (FBS, HyClone, Camarillo, CA, USA), 100 U/mL penicillin, and 100 mg/mL streptomycin (Invitrogen) at 37 °C with 5% CO₂.

Transfections

Typically, pancreatic cancer cells were seeded at 5×10^5 cells per well in six-well plates and then transfected on the next day with appropriate specific small interfering RNA (siRNA) (100 nmol/L) or scrambled control siRNA (100 nmol/L) using Lipofectamine 2000 (Invitrogen). Forty-eight hours after transfection, the cells were harvested for further experiments. The primer sequences and siRNA sequences are listed in Additional file 1: Table S1.

Cell viability and colony formation assays

AsPC-1, BxPC-3 and PANC-1 cells were seeded at 3000 cells/well in 96-well plates and transfected with specific or control siRNA. Cell viability was assessed using the Cell Proliferation Reagent Kit I (MTT; Roche Applied Science). Each experiment was conducted at least three times independently in quintuplicate.

For colony formation assays, a total of 500 cells were seeded in a six-well plate and maintained in medium containing 10% FBS. The medium was replenished every 3 days. After 2 weeks, cells were fixed with methanol and stained with 0.1% crystal violet (Sigma Aldrich, St. Louis, MO, USA). Visible colony formation was determined by counting the number of stained colonies. An aggregate consisting of 50 cells or more was considered a colony and scored. Each experiment

was conducted at least three times independently in triplicate.

Flow cytometry

BxPC-3 and PANC-1 cells were transfected with appropriate specific or control siRNA and subsequently stained with propidium iodide using the Cycle TEST™ PLUS DNA Reagent Kit (BD Biosciences). The DNA content of the cells was analyzed by flow cytometry (FACScan®; BD Biosciences) equipped with the Cell Quest software (BD Biosciences). The percentage of cells in the G₀-G₁, S, or G₂-M phase was calculated based on relative DNA content.

For analysis of apoptosis, BxPC-3 and PANC-1 cells were harvested 48 h post transfection. The cells were stained with fluorescein isothiocyanate (FITC) annexin V and propidium iodide in the dark at room temperature. Then, the cells were analyzed by FACScan® and counted as viable, early apoptotic, late apoptotic, or dead cells.

Xenograft assays

Four-week-old male athymic mice were purchased from the Animal Center of Xiamen University (Xiamen, China) and maintained in laminar flow cabinets under specific pathogen-free conditions. BxPC-3 cells were transfected with sh-DUXAP8 or empty vector. The cells were then collected, washed with phosphate-buffered saline (PBS), and resuspended at 2×10^7 cells/mL. Each mouse received 100 µL cell suspensions in the lower right flank ($n=6$ mice per group). Tumor growth was examined every 3 days, and tumor volume (V) was determined by measuring the length (L) and width (W) of the tumor with a calliper and calculated using the formula $V=(L \times W^2) \times 0.5$. At day 15 post tumor inoculation, the tumors were removed from all mice.

RNA immunoprecipitation (RIP)

RNA immunoprecipitation was used to investigate whether DUXAP8 could interact or bind to candidate binding proteins (EZH2 and LSD1) in BxPC-3 cells using the EZMagna RIP kit (Millipore, Billerica, MA, USA). BxPC-3 cells were lysed in complete RIP lysis buffer, and the cell lysate was incubated with magnetic beads conjugated with antibodies against EZH2 and LSD1, or control IgG (Millipore, Bedford, MA, USA) for 6 h at 4 °C. Then, the beads were washed and incubated with proteinase K to remove proteins. Finally, purified RNA was subjected to qRT-PCR to examine the expression of DUXAP8 using specific primers.

Chromatin immunoprecipitation (ChIP)

ChIP assays were performed using the MagnaChIP Kit (Millipore), as previously described [15]. Precipitated

chromatin DNA was recovered and analyzed by qRT-PCR. The primer sequences are shown in Additional file 1: Table S1.

Western blot assays

Cell protein lysates were separated by 10% sodium dodecyl sulfate polyacrylamide gel electrophoresis (SDSPAGE), transferred to 0.22- μ m NC membranes (Sigma), and incubated with specific antibodies. ECL chromogenic substrate was used for quantification by densitometry (Quantity One software; Bio-Rad). Antibodies against GAPDH, CDKN1A and KLF2 were used to detect target proteins (Abcam, Hong Kong, China). Protein bands were quantified by densitometry (Quantity One software; Bio-Rad). GAPDH was used as loading control.

Immunohistochemistry

Tumor specimens from nude mice were stained with hematoxylin and eosin (H&E) and Ki67 for immunohistochemical evaluation. Anti-Ki67 antibody was purchased from Santa Cruz Biotechnology (Santa Cruz, CA, USA). The staining results were independently scored by the author (LYF) and a pathologist (XCX) to minimize subjectivity.

Statistical analysis

All statistical analyses were performed using SPSS software 22.0 (SPSS, Chicago, IL, USA). Paired Student's *t*-test was performed to detect the differential expression of DUXAP8 in PC cancer tissues compared with adjacent normal tissues. The relationship between DUXAP8 and clinicopathologic characteristics was evaluated using Chi square test. Survival data were analyzed using Kaplan–Meier analysis, followed by log-rank test. Pairwise comparison, multiple group comparison and correlation analyses were conducted with paired Student's *t*-test, two-way ANOVA, linear regression test and Pearson test using Graph Pad Prism 5 software (Graph Pad software Inc.), respectively. All data are presented as mean \pm SD. Differences were considered significant if $P < 0.05$ (2-sided).

Results

DUXAP8 is upregulated in PDAC tissues and predicts shorter OS

To identify the lncRNAs involved in pancreatic tumorigenesis, we performed an integrative analysis of pancreatic cancer microarray profile comprising GSE16515, GSE15932 and GSE15471 from GEO datasets. A total of 33 lncRNAs were upregulated in GSE16515 datasets, 40 in GSE15932 datasets, and 58 in GSE15471 datasets (fold change > 2.0 , $P < 0.05$; Fig. 1a). However, among all the

upregulated lncRNAs, only three lncRNAs were consistently upregulated across all the datasets (Fig. 1a, b). Subsequently, considering the expression level of candidate lncRNAs in pancreatic cancer, we focused on the pseudogene derived lncRNA DUXAP8 for subsequent study. DUXAP8 is located at the chromosomal locus 22q11.1 and encodes a 2107-bp transcript (Fig. 1c). Next, to validate the analysis results, we examined DUXAP8 expression in a cohort of 58 paired PDAC and adjacent normal tissues and found upregulated DUXAP8 expression in PDAC tissues *versus* adjacent normal tissues (Fig. 1d).

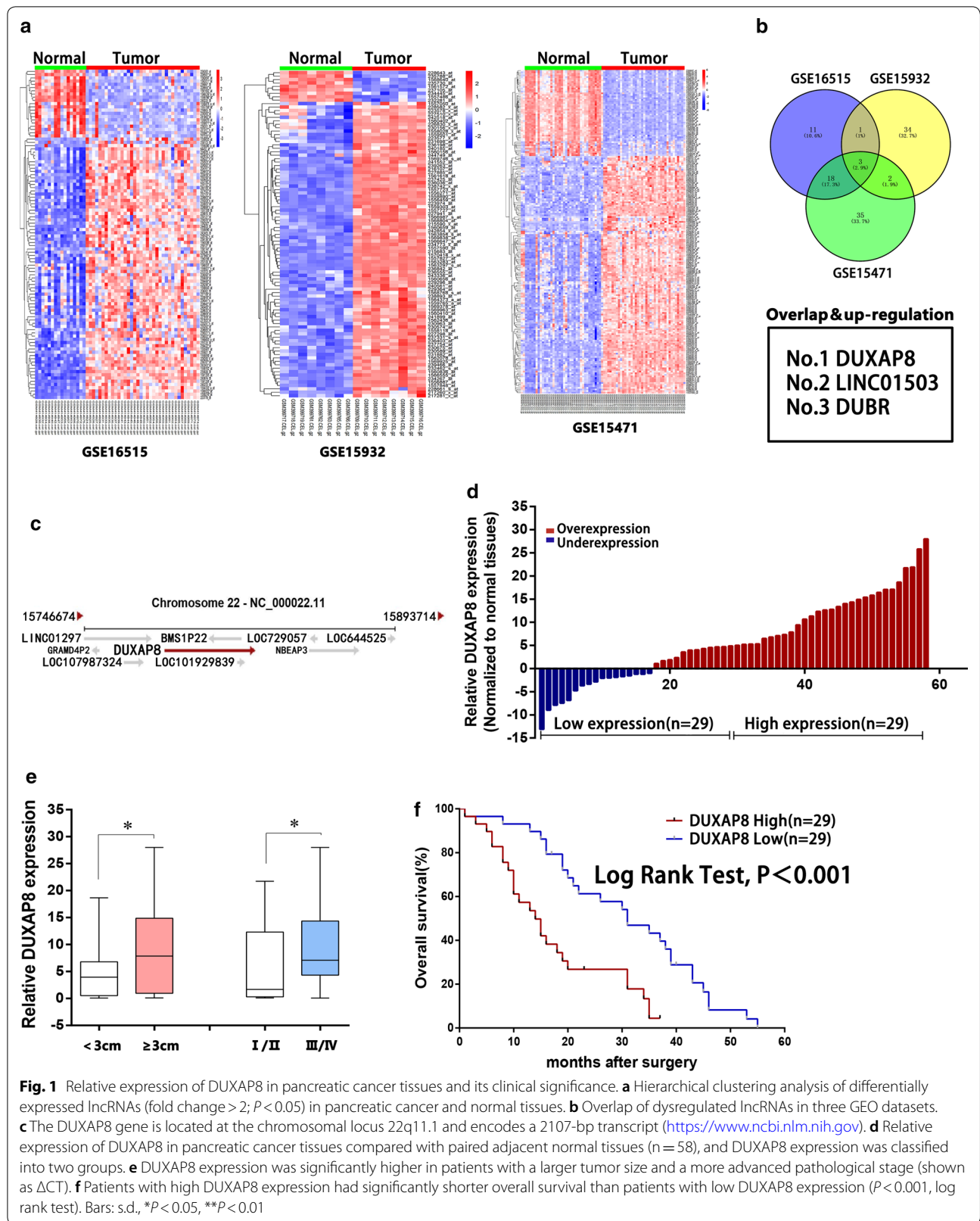
We further investigated the relationship between DUXAP8 expression and clinicopathologic variables by using median DUXAP8 expression to categorize the patients into the high ($n = 29$) and low ($n = 29$) expression group. A Chi square test was then performed to evaluate the clinicopathologic variables between the two groups. As shown in Table 1, patients with high and low DUXAP8 expression differed significantly in tumor size ($P = 0.033$) and TNM stages ($P = 0.0034$) (Fig. 1e). The median OS in the low DUXAP8 expression group was 31 months (range 1–55 months) vs. 14 months (range 1–39 months) in the high DUXAP8 expression group ($P < 0.001$; HR = 2.458, 95% CI 1.902–6.439) (Fig. 1f).

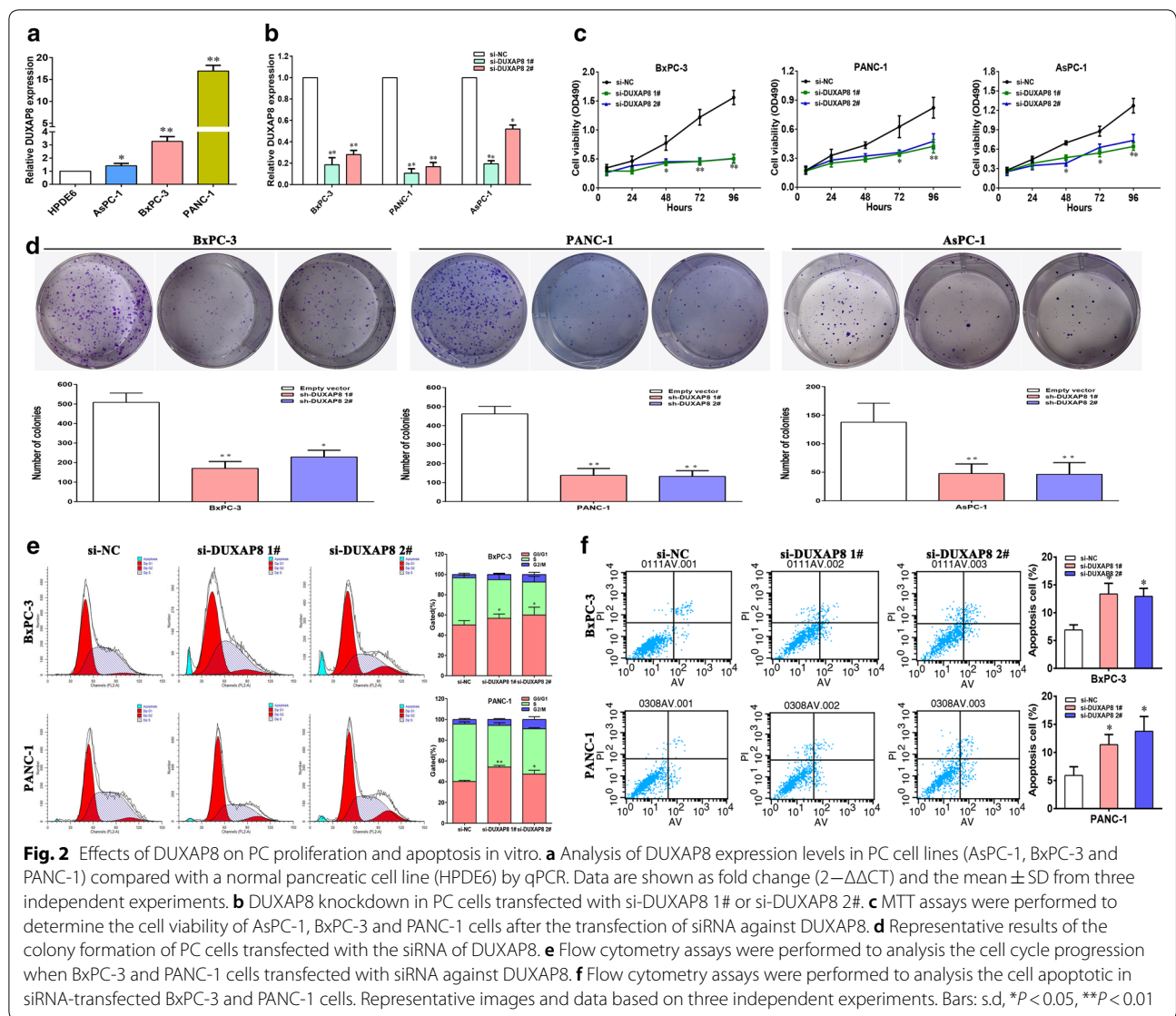
DUXAP8 downregulation inhibits proliferation and induces apoptosis in pancreatic cancer cells

To investigate the biological function of DUXAP8 in pancreatic cancer cells, we first evaluated DUXAP8 expression in pancreatic cancer cells by qRT-PCR assays. Higher DUXAP8 levels were observed in pancreatic cells (AsPC-1, BxPC-3 and PANC-1) *versus* normal HPDE6 cells (Fig. 2a). Furthermore knocking down endogenous DUXAP8 expression in AsPC-1, BxPC-3 and PANC-1 cells with siRNAs reduced DUXAP8 expression by 81.4%, 89.4% and 80.6%, respectively (Fig. 2b). MTT assays confirmed that knockdown of DUXAP8 suppressed the growth of pancreatic cancer cells (Fig. 2c). Consistently, colony formation assays showed that downregulation of DUXAP8 inhibited cell proliferation ability of AsPC-1, BxPC-3 and PANC-1 (Fig. 2d). In addition, flow cytometry indicated that knockdown of DUXAP8 expression arrested the cell cycle at the G1/G0 phase and induced apoptosis in BxPC-3 and PANC-1 cells (Fig. 2e, f).

DUXAP8 downregulation inhibits the growth of pancreatic cancer xenografts

We further investigated the effect of DUXAP8 on the growth of BxPC-3 xenograft. sh-DUXAP8 markedly suppressed the growth of the xenografts with a significantly lower tumor volume and weight *versus* the controls (Fig. 3a–c). As shown in Fig. 3d, qRT-PCR assays showed lower DUXAP8 levels in the tumor tissues derived from



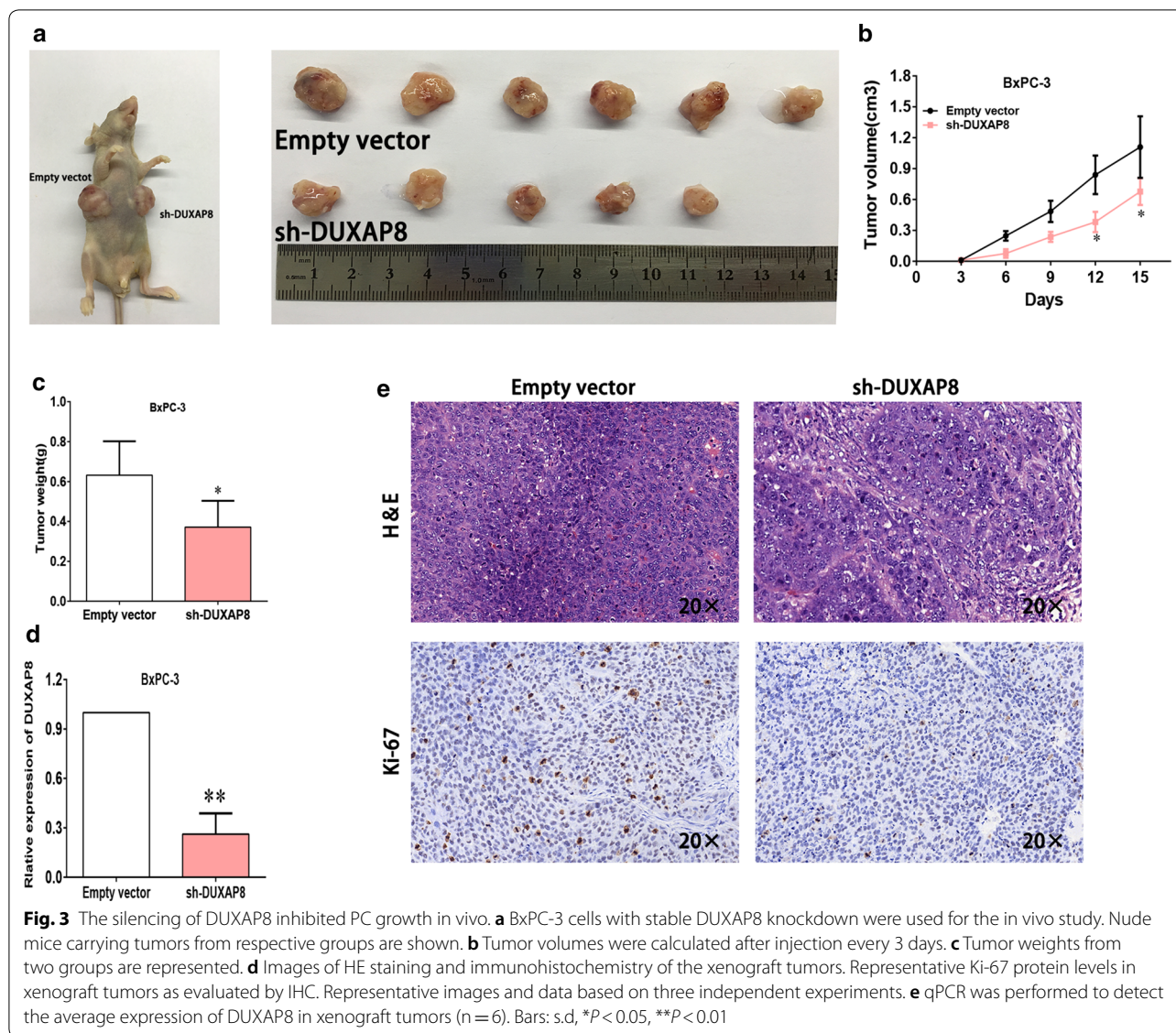


sh-DUXAP8-transfected cells (Fig. 3d). Moreover, immunohistochemistry revealed that tumor xenografts bearing sh-DUXAP8-transfected cells had weaker Ki67 staining than the control xenografts (Fig. 3e). These data demonstrated that DUXAP8 downregulation significantly inhibited the growth of tumor xenograft.

DUXAP8 serves as modular scaffold for EZH2 and LSD1, thus epigenetically silencing of CDKN1A and KLF2

Generally, lncRNAs are involved in regulating cancer cell phenotypes via activating oncogenes or inhibiting tumor suppressors by interacting with specific RNA-binding proteins. To investigate the molecular mechanism of DUXAP8 in pancreatic cancer cells, we examined the effects of DUXAP8 knockdown on a total of 9 different

cell proliferation related transcripts in BxPC-3 and PANC-1 cells (Fig. 4a, b). We found that DUXAP8 downregulation significantly increased the mRNA transcript levels of *CDKN1A*, *CDKN2B*, *KLF2*, *Bax*, *caspase-3*, *caspase-9*, *PTEN* and *EMP1* (Fig. 4a, b). Furthermore, bioinformatics analysis indicated two chromatin modifiers, EZH2 (H3K27me3) and LSD1 (H3K4me2) (<http://priddbgdcb.iastate.edu/RPISeq/references.php>), as binding proteins for DUXAP8 (Fig. 4c). RIP assays showed that DUXAP8 could directly bind to EZH2 and LSD1 in BxPC-3 cells (Fig. 4d). To further investigate candidate genes involved in DUXAP8 function, we examined the effects of LSD1 or EZH2 knockdown on 9 different cell proliferation related transcripts in BxPC-3 cells (Fig. 4e–h). The result demonstrated that only *CDKN1A*



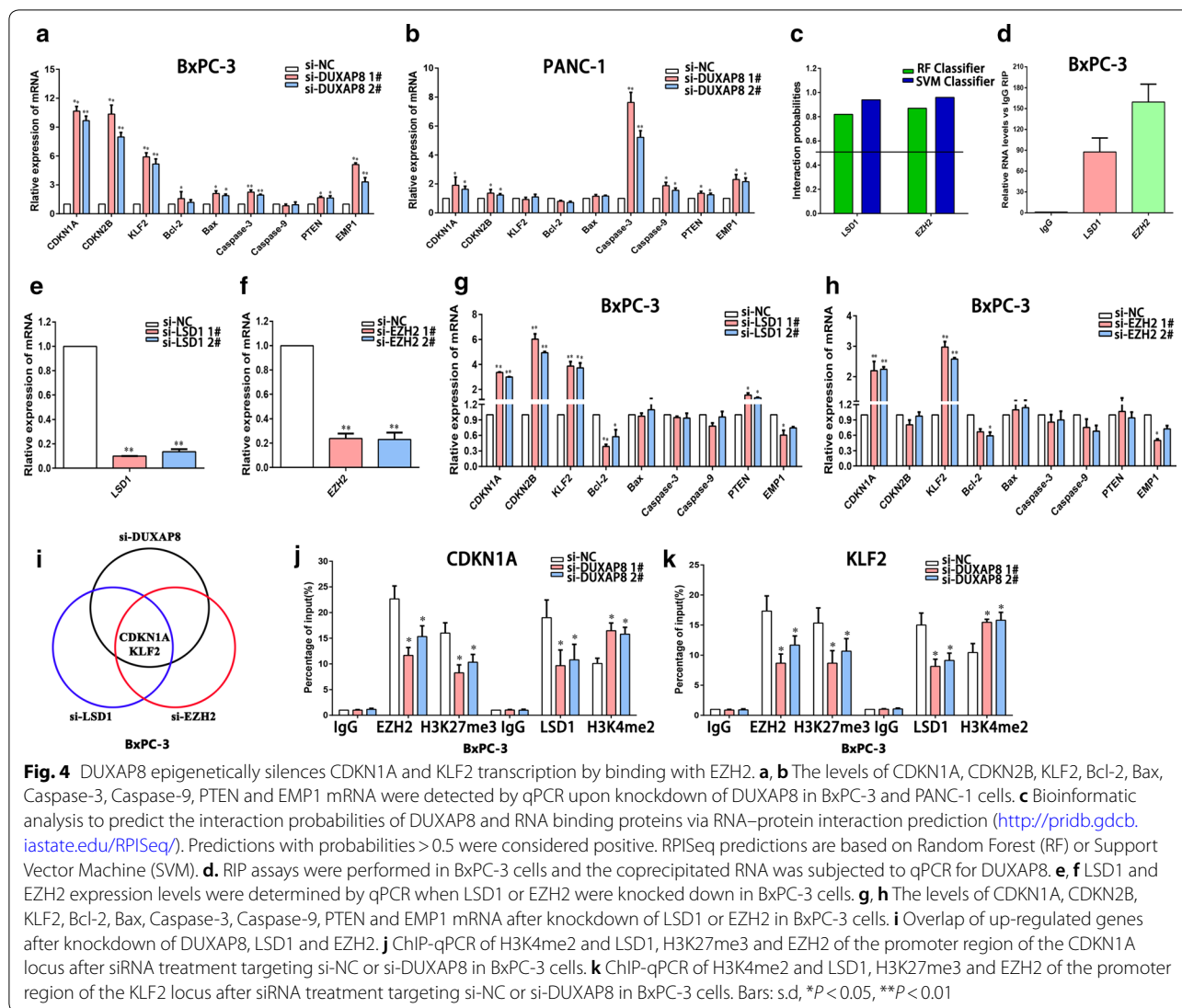
and *KLF2* were consistently upregulated by downregulation of *DUXAP8*, *LSD1* and *EZH2* (Fig. 4i). *CDKN1A* and *KLF2* have been identified as novel tumor suppressors involved in cancer cell proliferation, apoptosis, and invasion [16–18]. Hence, we chose *CDKN1A* and *KLF2* for further experiments.

EZH2 is a negative regulator of transcription via trimethylation of histone 3 lysine 27 (H3K27me3), whereas *LSD1* is a negative regulator of transcription via demethylation of histone 3 lysine 4 (H3K4me2) [19, 20]. Therefore, it is likely that *DUXAP8* suppresses *CDKN1A* and *KLF2* expression by recruiting *EZH2* and *LSD1* to the *CDKN1A* and *KLF2* promoter region, leading to trimethylation of H3K27 or demethylation of H3K4 at this region. To verify this hypothesis, we designed three

paired primers across the promoter region (2000 bp) of *CDKN1A* and *KLF2*, and conducted ChIP assays by knocking down *DUXAP8*. We found that knockdown of *DUXAP8* decreased binding of *EZH2* and H3K27me3 across the *CDKN1A* and *KLF2* promoter region and reduced binding of *LSD1* and H3K4me2 (Fig. 4j, k). These data indicated that *DUXAP8* could function as a scaffold by binding to *EZH2* and *LSD1*, thus epigenetically silencing *CDKN1A* and *KLF2* in pancreatic cancer cells.

Silence of *CDKN1A* and *KLF2* is partly involved in the oncogenic function of *DUXAP8*

qRT-PCR analysis using 20 pairs of pancreatic cancer and adjacent normal tissues showed significantly higher *CDKN1A* and *KLF2* expression in the cancer tissues



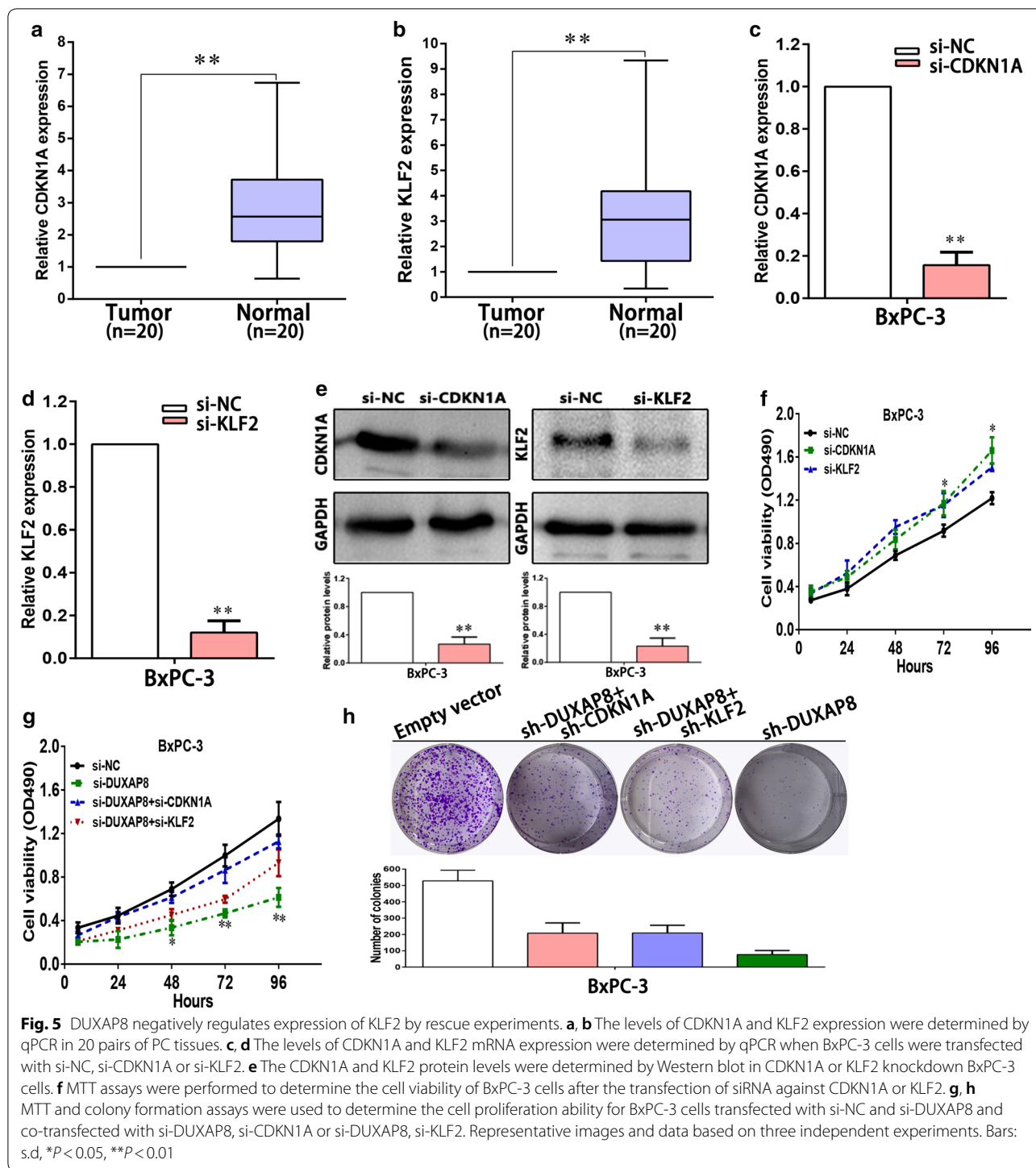
(Fig. 5a, b). To validate the influence of CDKN1A and KLF2 on cellular proliferation of pancreatic cancer cells, we knocked down *CDKN1A* and *KLF2* expression in BxPC-3 cells (Fig. 5c–e). MTT assays revealed that knockdown of *CDKN1A* or *KLF2* expression could promote cellular proliferation (Fig. 5f). These data showed that CDKN1A and KLF2 could inhibit proliferation of BxPC-3 cells, which was contrary to the effects of DUXAP8 downregulation in pancreatic cancer cells.

Next, to further investigate whether CDKN1A and KLF2 are involved in the enhanced cellular proliferation induced by DUXAP8 in pancreatic cancer cells, we performed rescue experiments. BxPC-3 cells were co-transfected with si-DUXAP8, si-CDKN1A or si-KLF2. MTT and colony formation assays showed that the proliferation ability of BxPC-3 cells co-transfected with si-DUXAP8, si-CDKN1A or si-KLF2 was improved *versus*

BxPC-3 cells transfected with si-DUXAP8 (Fig. 5g, h). These results indicated that DUXAP8 exerted oncogenic effect on pancreatic cancer cells partly via repressing CDKN1A and KLF2 expression.

Discussion

Recently, it has become increasingly apparent that many pseudogenes are transcribed into long non-coding RNAs with potential biological functions [6, 21]. The pseudogene derived lncRNA DUXAP8 was initially reported by Ma et al. [13]. Recent studies indicated that DUXAP8 has a critical role in non-small-cell lung cancer cell proliferation and invasion by epigenetically silencing *EGR1* and *RHOB* [13]. However, the clinical significance and functional role of DUXAP8 expression in pancreatic cancer has not been reported yet. In this study, we identified the pseudogene derived lncRNA DUXAP8 as a

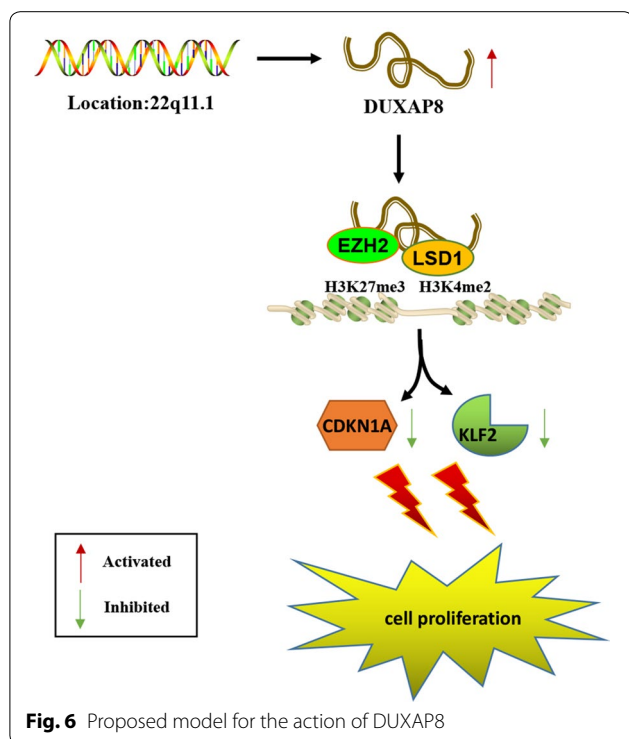


novel modulator of pancreatic cancer progression. Our finding indicated that DUXAP8 may serve as a potential therapeutic target for intervention against pancreatic cancer. Importantly, DUXAP8 was significantly upregulated in pancreatic cancer tissues and cells. DUXAP8 upregulation was also associated with larger tumor size,

advanced pathologic stage and shorter OS of pancreatic cancer patients. Consistently with these circumstantial findings, knockdown of DUXAP8 remarkably inhibited pancreatic cancer cell proliferation, induced apoptosis, and promoted cell cycle arrest. DUXAP8 induced increase in pancreatic cancer cell proliferation and

tumorigenesis may be partly mediated via epigenetically silencing *CDKN1A* and *KLF2* transcription by binding with EZH2 and LSD1. To conclude, the current study indicated that pseudogene derived lncRNA DUXAP8 could act as a non-coding oncogene in PC tumorigenesis.

It has been confirmed that many pseudogenes derived lncRNAs could regulate target gene expression through interacting with RNA binding proteins, such as PRC2, SUV39H1, and LSD1 [12, 13, 22, 23]. EZH2, an important catalytic subunit of PRC2, functions as a histone methyltransferase that specifically induces histone H3 lysine 27 trimethylation (H3K27me3) to the target genes [24]. EZH2 overexpression plays a key role in human oncogenesis and progression [19, 25]. LSD1, also known as KDM1A, is a histone demethylase that specifically demethylates mono- and di-methylated lysine 4 of histone H3 (H3K4me2) [26]. Accumulating evidence indicates that LSD1 could be a novel regulator of cellular process: overexpression of LSD1 has been shown in many cancers including pancreatic cancer [27–29]. In our previous studies, we demonstrated that lncRNA IRAIN suppressed apoptosis and promoted cellular proliferation by binding to LSD1 and EZH2 in pancreatic cancer [30]. Interestingly, in this study, our findings showed that DUXAP8 mediated the oncogenic effects partially through its epigenetic silencing of *CDKN1A* and *KLF2* expression by binding with EZH2 and LSD1 (Fig. 6).



Conclusions

In summary, we reported a crucial tumor-promoting pseudogene derived lncRNA DUXAP8 in pancreatic cancer, which may serve as a new therapeutic target for pancreatic cancer. Whether DUXAP8 could regulate other downstream target genes and its underlying regulatory mechanisms require further investigation.

Additional file

Additional file 1. Primer sequences and siRNA sequences used in the study.

Abbreviations

lncRNAs: long non-coding RNAs; DUXAP8: double homeobox A pseudogene 8; KLF2: Kruppel-like factor 2; EZH2: enhancer of zeste homolog 2; LSD1: lysine-specific demethylase 1; PRC2: polycomb repressive complex 2; qRT-PCR: quantitative reverse transcription polymerase chain reaction; TNM: tumor-node-metastasis; siRNA: small interfering RNA.

Authors' contributions

LYF designed the study, investigated the cells' biological function, conducted the RIP, ChIP and qRT-PCR assays, performed statistical analysis, and drafted the manuscript. YJB provided the tissue samples and the clinical data and helped to draft the manuscript. LYK conducted the Western blotting assays and participated in the design of the study. XHZ and XCX conceived the study, participated in its design and coordination, and helped to draft the manuscript. All authors read and approved the final manuscript.

Author details

¹ Department of Gastroenterology, Zhongshan Hospital, Xiamen University, Xiamen 361005, Fujian, P. R. China. ² Institute for Microbial Ecology, Xiamen University, Xiamen 361005, Fujian, P. R. China. ³ Jiangsu Province Hospital of TCM, Affiliated Hospital of Nanjing University of TCM, Nanjing 210029, Jiangsu, P. R. China.

Acknowledgements

Not applicable.

Competing interests

The authors declare that they have no competing interests.

Consent for publication

Not applicable.

Ethics approval and consent to participate

This study was approved by the Research Ethics Committee of Xiamen University (Xiamen, Fujian, PR China). Written informed consent was obtained from all patients. We confirm that all experiments were performed in accordance with relevant guidelines and regulations.

Funding

This work was supported by grants from the National Natural Science Foundation of China (Nos. 81602052, 8160100460, and 8157040399).

Received: 31 August 2017 Accepted: 8 October 2018

Published online: 26 October 2018

References

1. Siegel RL, Miller KD, Jemal A. Cancer statistics, 2016. *CA Cancer J Clin.* 2016;66(1):7–30.

2. Torre LA, Bray F, Siegel RL, Ferlay J, Lortet-Tieulent J, Jemal A. Global cancer statistics, 2012. *CA Cancer J Clin*. 2015;65(2):87–108.
3. King J, Bouvet M, Singh G, Williams J. Improving theranostics in pancreatic cancer. *J Surg Oncol*. 2017;116:104–13.
4. Wolfgang CL, Herman JM, Laheru DA, Klein AP, Erdek MA, Fishman EK, et al. Recent progress in pancreatic cancer. *CA Cancer J Clin*. 2013;63(5):318–48.
5. Harrow J, Frankish A, Gonzalez JM, Tapanari E, Diekhans M, Kokocinski F, et al. GENCODE: the reference human genome annotation for The ENCODE Project. *Genome Res*. 2012;22(9):1760–74.
6. Shi X, Nie F, Wang Z, Sun M. Pseudogene-expressed RNAs: a new frontier in cancers. *Tumour Biol*. 2016;37(2):1471–8.
7. Pink RC, Carter DR. Pseudogenes as regulators of biological function. *Essays Biochem*. 2013;54:103–12.
8. Poliseno L, Marranci A, Pandolfi PP. Pseudogenes in human cancer. *Front Med*. 2015;2:68.
9. Hayashi H, Arao T, Togashi Y, Kato H, Fujita Y, De Velasco MA, et al. The OCT4 pseudogene POU5F1B is amplified and promotes an aggressive phenotype in gastric cancer. *Oncogene*. 2015;34(2):199–208.
10. Yu G, Yao W, Gumireddy K, Li A, Wang J, Xiao W, et al. Pseudogene PTENP1 functions as a competing endogenous RNA to suppress clear-cell renal cell carcinoma progression. *Mol Cancer Ther*. 2014;13(12):3086–97.
11. Wei CC, Nie FQ, Jiang LL, Chen QN, Chen ZY, Chen X, et al. The pseudogene DUXAP10 promotes an aggressive phenotype through binding with LSD1 and repressing LATS2 and RRAD in non small cell lung cancer. *Oncotarget*. 2017;8(3):5233–46.
12. Sun M, Nie FQ, Zang C, Wang Y, Hou J, Wei C, et al. The pseudogene DUXAP8 promotes non-small-cell lung cancer cell proliferation and invasion by epigenetically silencing EGR1 and RHOB. *Mol Ther*. 2017;25(3):739–51.
13. Ma HW, Xie M, Sun M, Chen TY, Jin RR, Ma TS, et al. The pseudogene derived long noncoding RNA DUXAP8 promotes gastric cancer cell proliferation and migration via epigenetically silencing PLEKHO1 expression. *Oncotarget*. 2016;8:52211.
14. Guo X, Deng L, Deng K, Wang H, Shan T, Zhou H, et al. Pseudogene PTENP1 suppresses gastric cancer progression by modulating PTEN. *Anticancer Agents Med Chem*. 2016;16(4):456–64.
15. Ding J, Xie M, Lian Y, Zhu Y, Peng P, Wang J, et al. Long noncoding RNA HOXA-AS2 represses P21 and KLF2 expression transcription by binding with EZH2, LSD1 in colorectal cancer. *Oncogenesis*. 2017;6(1):e288.
16. Abbas T, Dutta A. p21 in cancer: intricate networks and multiple activities. *Nat Rev Cancer*. 2009;9(6):400–14.
17. Xu TP, Liu XX, Xia R, Yin L, Kong R, Chen WM, et al. SP1-induced upregulation of the long noncoding RNA TINCR regulates cell proliferation and apoptosis by affecting KLF2 mRNA stability in gastric cancer. *Oncogene*. 2015;34(45):5648–61.
18. Zhang D, Dai Y, Cai Y, Suo T, Liu H, Wang Y, et al. KLF2 is downregulated in pancreatic ductal adenocarcinoma and inhibits the growth and migration of cancer cells. *Tumour Biol*. 2016;37(3):3425–31.
19. Yoo KH, Hennighausen L. EZH2 methyltransferase and H3K27 methylation in breast cancer. *Int J Biol Sci*. 2012;8(1):59–65.
20. Popova EY, Pinzon-Guzman C, Salzberg AC, Zhang SS, Barnstable CJ. LSD1-Mediated demethylation of H3k4me2 is required for the transition from late progenitor to differentiated mouse rod photoreceptor. *Mol Neurobiol*. 2016;53(7):4563–81.
21. Grander D, Johnsson P. Pseudogene-expressed RNAs: emerging roles in gene regulation and disease. *Curr Top Microbiol Immunol*. 2016;394:111–26.
22. Poliseno L. Pseudogenes: newly discovered players in human cancer. *Sci Signal*. 2012;5(242):re5.
23. Scarola M, Comisso E, Pascolo R, Chiaradia R, Marion RM, Schneider C, et al. Epigenetic silencing of Oct4 by a complex containing SUV39H1 and Oct4 pseudogene lncRNA. *Nat Commun*. 2015;6:7631.
24. Yamaguchi H, Hung MC. Regulation and role of EZH2 in cancer. *Cancer Res Treat*. 2014;46(3):209–22.
25. Chase A, Cross NC. Aberrations of EZH2 in cancer. *Clin Cancer Res*. 2011;17(9):2613–8.
26. Shi Y, Lan F, Matson C, Mulligan P, Whetstone JR, Cole PA, et al. Histone demethylation mediated by the nuclear amine oxidase homolog LSD1. *Cell*. 2004;119(7):941–53.
27. Shi X, Ma C, Zhu Q, Yuan D, Sun M, Gu X, et al. Upregulation of long intergenic noncoding RNA 00673 promotes tumor proliferation via LSD1 interaction and repression of NCALD in non-small-cell lung cancer. *Oncotarget*. 2016;7(18):25558–75.
28. Wu Y, Zhou BP. Epigenetic regulation of LSD1 during mammary carcinogenesis. *Mol Cell Oncol*. 2014;1(3):e963426.
29. Qin Y, Zhu W, Xu W, Zhang B, Shi S, Ji S, et al. LSD1 sustains pancreatic cancer growth via maintaining HIF1alpha-dependent glycolytic process. *Cancer Lett*. 2014;347(2):225–32.
30. Lian Y, Wang J, Feng J, Ding J, Ma Z, Li J, et al. Long non-coding RNA IRAIN suppresses apoptosis and promotes proliferation by binding to LSD1 and EZH2 in pancreatic cancer. *Tumour Biol*. 2016;37(11):14929–37.

Ready to submit your research? Choose BMC and benefit from:

- fast, convenient online submission
- thorough peer review by experienced researchers in your field
- rapid publication on acceptance
- support for research data, including large and complex data types
- gold Open Access which fosters wider collaboration and increased citations
- maximum visibility for your research: over 100M website views per year

At BMC, research is always in progress.

Learn more biomedcentral.com/submissions

