

FULL PAPER

Open Access

JMSS-1: a new Martian soil simulant

Xiaojia Zeng^{1,2}, Xiongyao Li^{1*}, Shijie Wang¹, Shijie Li¹, Nicole Spring³, Hong Tang¹, Yang Li¹ and Junming Feng¹

Abstract

It is important to develop Martian soil simulants that can be used in Mars exploration programs and Mars research. A new Martian soil simulant, called Jining Martian Soil Simulant (JMSS-1), was developed at the Lunar and Planetary Science Research Center at the Institute of Geochemistry, Chinese Academy of Sciences. The raw materials of JMSS-1 are Jining basalt and Fe oxides (magnetite and hematite). JMSS-1 was produced by mechanically crushing Jining basalt with the addition of small amounts of magnetite and hematite. The properties of this simulant, including chemical composition, mineralogy, particle size, mechanical properties, reflectance spectra, dielectric properties, volatile content, and hygroscopicity, have been analyzed. On the basis of these test results, it was demonstrated that JMSS-1 is an ideal Martian soil simulant in terms of chemical composition, mineralogy, and physical properties. JMSS-1 would be an appropriate choice as a Martian soil simulant in scientific and engineering experiments in China's Mars exploration in the future.

Keywords: Martian soil simulant; JMSS-1; Mars analog; Mars exploration

Background

With the continuous development of the Chang'E lunar exploration program (Chang'E-1, Chang'E-2, and Chang'E-3), Mars exploration has become one of the key missions of China's deep space exploration program.

Martian soil, covering the entire surface of Mars, is an unconsolidated material which has a direct effect on the locomotion performance of the Mars Lander/Rover and the performance of other aerospace equipment (Bishop and Dummel 1996; Arvidson et al. 2004a, b). Reaching Mars and landing safely on it have proven to be challenging tasks, despite the success of recent missions (e.g., Curiosity). Therefore, in order to better prepare for orbiter and landing missions to Mars, it is essential to carry out a series of ground experiments using Martian soil before a robotic mission is launched to explore the surface of Mars (Marlow et al. 2008). However, no samples of Martian soil have been collected, even though Mars exploration activities have been carried out about 40 times within the last five decades.

In view of the lack of any Martian soil samples, a Martian soil simulant, as a substitute material for Martian soil, should be developed to replace real Martian soil to be used

for scientific and engineering experiments. Martian soil simulants are usually produced using terrestrial material (e.g., basalt, volcanic ash, and volcanic cinders). It has similar chemical composition, mineralogy, particle size, and physical properties to real Martian soil. Martian soil simulants are widely used in engineering and scientific experiments in terrestrial laboratories, which mainly include payload calibration, rover walking experiments, testing and verifying of aerospace equipment, and other simulation experiments related to Mars exploration (Gross et al. 2001; Anderson et al. 2009; Beegle et al. 2009; Moroz et al. 2009; Pirrotta 2010; ElShafie et al. 2012; Merrison et al. 2012; Yeomans et al. 2013).

Four types of Martian soil simulants (JSC Mars-1, MMS, Salten Skov I, and ES-X) have been developed in the USA and at the European Space Agency for different purposes, such as spectrometer calibration, testing of lander/rover instruments, and evaluating the physical effect of Martian soil on mechanical components. JSC Mars-1, produced by the Johnson Space Center (JSC), has been widely used throughout the scientific community (Mautner and Sinaj 2002; Buhler and Calle 2003; Ormond and Kral 2006; Sharma et al. 2008). MMS (Mojave Mars Simulant) is a basaltic Mars simulant that is available as whole rock, sand, and dust. MMS sand and MMS dust are produced by mechanically crushing Saddleback basaltic boulders. They have been used in

* Correspondence: lixiongyao@vip.skleg.cn

¹Lunar and Planetary Science Research Center, Institute of Geochemistry, Chinese Academy of Sciences, Guiyang 55002, China

Full list of author information is available at the end of the article

the development of the 2007/8 Phoenix Scout and Mars Science Laboratory mission (Peters et al. 2008). Salten Skov I is a Martian magnetic dust analog made from fine-grained magnetic iron oxide precipitate originating from Denmark. It is a good Martian dust analog in terms of grain size, magnetic properties, optical reflectance, and aggregation properties for application in wind tunnels and other dust suspension/deposition studies (Nørnberg et al. 2009). ES-X is an engineering soil produced by the European Space Agency. It has been used to test the locomotion performance of the ExoMars rover, which is planned for launch in 2018 (Brunskill et al. 2011; Gouache et al. 2011).

So far, only the USA and the European Space Agency have developed Martian soil simulants. The lack of a Martian soil simulant has limited the development of China's deep space exploration. To prepare for China's upcoming robotic mission to Mars, a new Martian soil simulant, called Jining Martian Soil Simulant (JMSS-1), has been developed. This paper describes its production process, properties, and how it compares with Martian soil and other simulants.

Methods

Target simulant and raw material selection

Martian soil is used to denote any loose, unconsolidated materials that can be distinguished from rocks, bedrock, or strongly cohesive sediments (Gellert et al. 2004). Physical weathering (e.g., impact events and wind abrasion) of a variety of intermediate to basic igneous rocks (basalts and probably basaltic andesites) is the presumed genesis of the majority of the soil, although minor chemical alterations to the source rocks and/or generated soil may occur (Wanke et al. 2001; Foley et al. 2003; Christensen et al. 2004a; Morris et al. 2004, 2006a, b; McSween et al. 2009). Data from ground-based landers/rovers and orbital spacecraft revealed that the Martian surface is dominated by basaltic soil composed primarily of pyroxene, plagioclase feldspar, and olivine, as well as minor amounts of Fe and Ti oxides (e.g., magnetite, ilmenite, and hematite) and alteration minerals (e.g., sulfates, phyllosilicates, and carbonates) (Yen et al. 2005; Morris et al. 2006a; Morris et al. 2006b; McSween et al. 2010; Bish et al. 2013). Martian surface soils measured by the Viking landers, Pathfinder, Spirit, Opportunity, and Curiosity show that the bulk chemical composition of these materials is relatively constant at widely spaced locations across the planet (Table 1).

In order to obtain a suitable Martian soil simulant that adequately represents Martian soil for engineering and scientific experiments in terrestrial laboratories, the target simulant should meet the following criteria: (1) chemical composition and mineralogy approximately similar to Martian soil; (2) particle size distribution within the range

of Martian soil values (grain size = 1 to 1000 μm , median size = 250 to 300 μm); (3) bulk density and mechanical properties within the range of Martian soil values (bulk density = 1200 to 1600 g/cm^3 , cohesion = 0 to 15 kPa, and internal friction angle = 20° to 40°); and (4) other properties, such as magnetic properties and reflectance spectra, similar to those of Martian soil, but not precisely imitated.

Considering the specific requirements of a Martian soil simulant, the source rock for development of the simulant was selected following these two principles: (1) it has a similar chemical composition and mineralogy to Martian basaltic rock, which contains lower levels of Al_2O_3 and higher levels of total Fe compare to terrestrial basalt, and (2) it can be easily acquired in large quantities. As a result of research and surveys, basaltic lava rock from Jining in southern Inner Mongolia was selected. It is currently being mined as construction material and is available in large quantities for the development of a Martian soil simulant (Fig. 1). The source rock for the JMSS-1 Martian soil simulant is Miocene in age and located on the northern edge of the North China craton, west of the Hannuoba basaltic field (Zhang et al. 2005). The hand samples of this basalt are dark gray to black, massive, porphyritic with fine-grained phenocrysts, and cryptocrystalline. As shown in Fig. 2, Jining basalt primarily consists of plagioclase, pyroxene, olivine, and a minor amount of ilmenite. Table 2 shows the chemical composition of Jining basalt compared to Backstay rock discovered in the Columbia Hills by the Spirit Rover and Bounce rock discovered at the Meridiani Planum by the Opportunity Rover. These results show that Jining basalt is similar to Backstay rock and Bounce rock in geochemical composition, except it is higher in Al_2O_3 and lower in total Fe (Rieder et al. 2004; McSween et al. 2006). In contrast to terrestrial basalt, Martian soil generally has a high level of total Fe (16–20 wt%). In order to produce a better simulant, magnetite and hematite, which are present in the Martian soil, were used as additives for the development of JMSS-1. The magnetite and hematite were collected from Hebei province in China.

Production of JMSS-1

JMSS-1 was produced by mechanically crushing Jining basalt with the addition of small amounts of magnetite and hematite collected from Hebei province in China. This mechanical crushing process more closely resembles the physical weathering/comminution processes of basaltic rocks on Mars, where meteoric impacts and wind abrasion are the mechanisms of comminution. The JMSS-1 Martian soil simulant was produced via the following steps: (1) coarse crushing: using a jaw crusher, the mined Jining basalt and hematite with diameters of approximately 100 to 300 mm were crushed into small rocks with diameters of <3 mm; (2) fine crushing: using

Table 1 Major element composition of JMSS-1 in comparison with Martian soil and other Martian soil simulants (wt%)

	Martian soil						Martian soil simulants			
	Viking 1 ^a	Viking 2 ^a	Pathfinder ^b	Spirit ^c	Opportunity ^d	Curiosity ^e	Average ^f	JSC Mars-1 ^g	MMS ^g	JMSS-1
SiO ₂	43.00	43.00	42.00	45.80	43.80	42.88	45.41	43.48	49.40	49.28 ± 0.24
TiO ₂	0.66	0.56	0.80	0.81	1.08	1.19	0.91	3.62	1.09	1.78 ± 0.01
Al ₂ O ₃	7.30	–	10.30	10.00	8.55	9.43	9.71	22.09	17.10	13.64 ± 0.33
Cr ₂ O ₃	–	–	0.30	0.35	0.46	0.49	0.36	0.03	0.05	–
Fe ₂ O ₃	18.50	17.80	21.70					16.08	10.87	16.00 ± 0.07
FeO				15.80	22.33	19.19 ^h	16.73			
MnO	–	–	0.30	0.31	0.36	0.41	0.33	0.26	0.17	0.14 ± 0.01
MgO	6.00	–	7.30	9.30	7.05	8.69	8.35	4.22	6.08	6.35 ± 0.08
CaO	5.90	5.70	6.10	6.10	6.67	7.28	6.37	6.05	10.45	7.56 ± 0.06
Na ₂ O	–	–	2.80	3.30	1.60	2.72	2.73	2.34	3.28	2.92 ± 0.09
K ₂ O	<0.15	<0.15	0.60	0.41	0.44	0.49	0.44	0.70	0.48	1.02 ± 0.03
P ₂ O ₅	–	–	0.70	0.84	0.83	0.94	0.83	0.78	0.17	0.30 ± 0.01
SO ₃	6.60	8.10	6.00	5.82	5.57	5.45	6.16	0.31	0.10	–
Cl	0.70	0.50	0.90	0.53	0.44	0.69	0.68	–	–	–
LOI	–	–	–	–	–	–	–	17.36	3.39	0.48 ± 0.17
Total	88.81	75.81	99.80	99.37	99.18	99.85	99.01	99.70	99.40	99.47

"–" not analyzed

^aBanin et al. (1992)

^bFoley et al. (2003)

^cGellert et al. (2004)

^dRieder et al. (2004)

^eBlake et al. (2013)

^fTaylor and McLennan (2009)

^gPeters et al. (2008)

^hFe₂O₃ + FeO = 19.19. For the Viking Landers, Pathfinder soil, JSC Mars-1, MMS, and JMSS-1 total Fe is expressed as Fe₂O₃. For Spirit and Opportunity, average soil total Fe is expressed as FeO

a ball crusher, the coarse crushed Jining basalt, magnetite, and hematite were crushed to fine grains with diameters of <1 mm; (3) mixing: these fine-grained samples were systematically mixed (93 wt% basalt, 5 wt% magnetite, and 2 wt% hematite); and (4) sieving and particle size adjustment: the grain size distribution was adjusted to achieve the target distribution by sieving the mixture.

Analytical methods

Samples of Jining basalt and JMSS-1 were prepared and polished for scanning electron microscope analysis. Major mineral species in Jining basalt and JMSS-1 were observed and studied using a JEOL JSM-6460LV Scanning Electron Microscope operating at 15 kV at the Institute of Geochemistry, Chinese Academy of Sciences. The major element compositions of Jining basalt and JMSS-1 were analyzed by X-ray fluorescence (XRF) following standard procedures at the State Key Laboratory of Ore Deposit Geochemistry at the Institute of Geochemistry, Chinese Academy of Sciences. Samples were ground to pass a 200-mesh (75- μ m) sieve prior to analysis. The particle size distribution and specific gravity of JMSS-1 were measured by a laser particle size analyzer Mastersizer 2000 and Ultrapyc 1200e gas pycnometer (Quantachrome Instruments, USA), respectively, at the Lunar and Planetary Science Research Center, Institute of Geochemistry, Chinese Academy of Sciences. The mechanical properties of JMSS-1 were determined by conventional triaxial compression (CTC) experiments at the Institute of Rock and Soil Mechanics, Chinese Academy of Sciences. The reflectance spectrum of JMSS-1 was measured at the Technical Institute of Physics and Chemistry, Chinese Academy of Sciences.

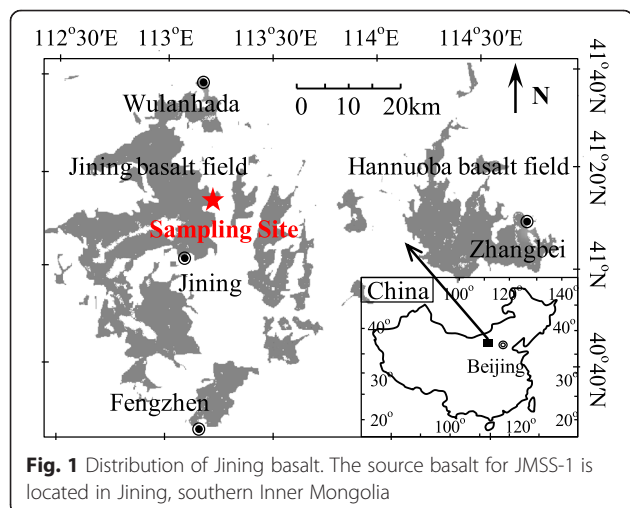


Fig. 1 Distribution of Jining basalt. The source basalt for JMSS-1 is located in Jining, southern Inner Mongolia

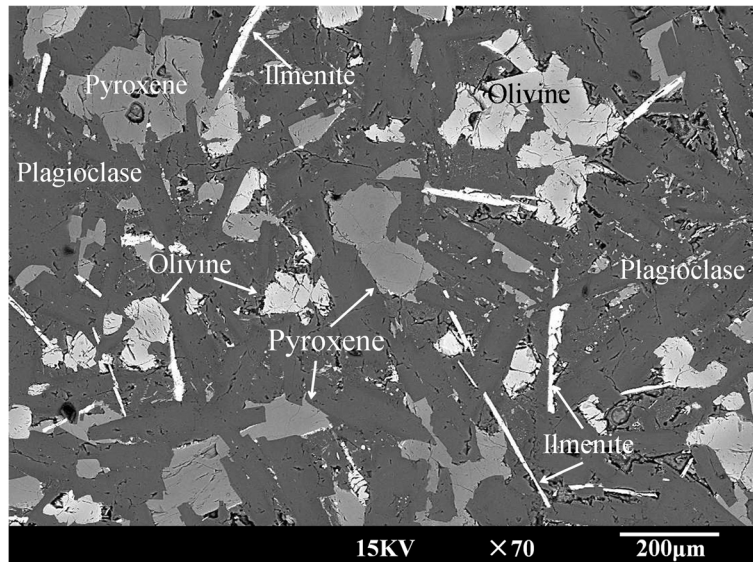


Fig. 2 Back-scattered electron image of Jining basalt. Jining basalt consists primarily of plagioclase, pyroxene, olivine, and a minor amount of ilmenite

The complex dielectric permittivity was determined by a resonant cavity perturbation method (accuracy <3 %) at 9370 MHz at the Lunar and Planetary Science Research Center, Institute of Geochemistry, Chinese Academy of Sciences (Zheng et al. 2005).

Results

Chemical composition

Table 1 provides the major element composition of JMSS-1 compared with MMS, JSC Mars-1, and descriptions of Martian soil from the Viking, Pathfinder, Spirit, Opportunity, and Curiosity landing sites. The test result for JMSS-1 is an average of three samples.

Mineralogy

From the X-ray diffraction (XRD) and scanning electron microscopy and energy dispersive spectrometry (SEM-EDS) data, JMSS-1 is mainly composed of plagioclase, pyroxene, and olivine, as well as minor amounts of ilmenite, magnetite, and hematite (Fig. 3). The composition of individual mineral phases in JMSS-1 was also

determined using SEM-EDS data. The result suggested that the plagioclase, olivine, and pyroxene in JMSS-1 tend to be calcic plagioclase (~An51–An60), forsteritic olivine (~Fo56–Fo70), and augite, respectively. Table 3 lists the SEM-EDS data for typical analysis points as seen in Fig. 3. It should also be noted that no altered minerals (e.g., sulfates, clays, or carbonates) were found in JMSS-1 by XRD and SEM.

A hand magnet was used to gather the magnetic component from three samples of JMSS-1. The average magnetic component in JMSS-1 is about 5 wt%, and the magnetic phase in JMSS-1 is magnetite, as indicated by the XRD and SEM-EDS data.

Particle size and shape

A back-scattered electron image of the typical particles of JMSS-1 is shown in Fig. 3. As shown in this image, most JMSS-1 particles are angular to subangular in shape. Figure 4 presents the particle size distribution curves of JMSS-1, JSC-1 Mars-1, and MMS sand (Allen et al. 1998; Peters et al. 2008). It indicates that the grain

Table 2 Chemical composition of Jining basalt compared to Backstay rock and Bounce rock (wt%)

	SiO ₂	TiO ₂	Al ₂ O ₃	Cr ₂ O ₃	Fe ₂ O ₃	MnO	MgO	CaO	Na ₂ O	K ₂ O	P ₂ O ₅	LOI	Total
Jining basalt-1	51.07	1.71	14.50	–	11.07	0.12	7.03	8.18	3.14	1.11	0.31	1.86	100.10
Jining basalt-2	51.08	1.69	14.51	–	10.93	0.13	6.89	8.05	3.14	1.09	0.30	2.20	100.01
Backstay rock ^a	50.16	0.94	13.45	0.15	13.85 ^c	0.24	8.41	6.11	4.20	1.08	1.41	–	100.00
Bounce rock ^b	51.27	0.79	10.19	0.13	15.74 ^c	0.43	6.46	12.62	1.31	0.10	0.96	–	100.00

^a– not analyzed

^aMcSween et al. (2006) and Nekvasil et al. (2009) (SO₃ and Cl-free, normalized to 100 %)

^bRieder et al. (2004) (SO₃ and Cl-free, normalized to 100 %)

^cFor Backstay rock and Bounce rock, total Fe is expressed as FeO

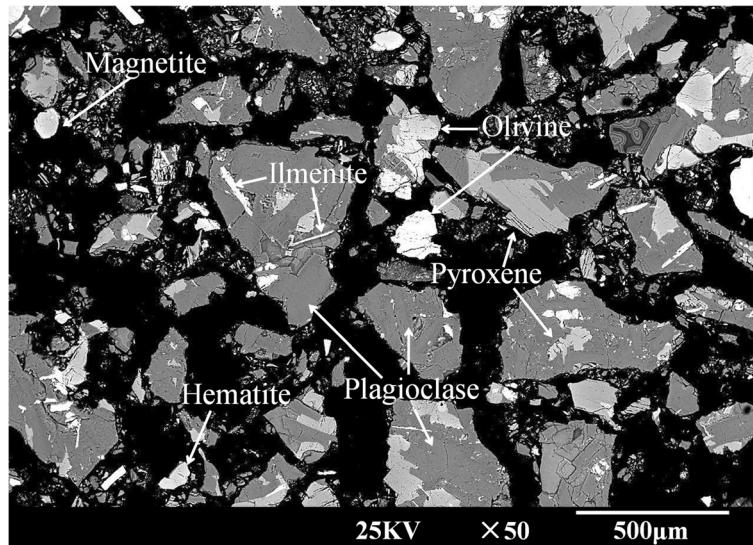


Fig. 3 Back-scattered electron image of JMSS-1. JMSS-1 consists primarily of plagioclase, pyroxene, and olivine, as well as minor amounts of ilmenite, magnetite, and hematite. Most JMSS-1 particles are angular to subangular in shape

size of JMSS-1 is <1 mm, and the median and mean particle sizes of this sample are ~300 and ~250 µm, respectively.

Mechanical properties

Table 4 presents the mechanical properties of JMSS-1 compared to MMS, JSC Mars-1, and Martian regolith observed at different Mars landing sites.

The specific gravity is the ratio of particle mass to the mass of an equal volume of water at 4 °C. Measured for three JMSS-1 samples, the average specific gravity of JMSS-1 particles is 2.88 g/cm³. We measured the masses and volumes of several JMSS-1 samples to determine a mean bulk density of 1.45 g/cm³. This value, compared to the particle density, infers a porosity of 49.65 % for JMSS-1.

Table 3 Representative SEM-EDS data of major phases in JMSS-1 (wt%)

	Olivine	Pyroxene	Plagioclase	Ilmenite	Magnetite	Hematite
SiO ₂	37.69	52.95	52.25	2.43	1.38	0.78
TiO ₂	0.19	0.75	0.15	47.05	0.25	0.39
Al ₂ O ₃	0.25	2.74	28.96	0.78	0.53	0.15
Cr ₂ O ₃	0.1	0.75	0.15	0.09	0.18	0.7
Fe ₂ O ₃	29.48	7.18	0.93	47.43	94.83	96.84
MnO	0.48	0.18	0.06	0.57	0.45	0.91
MgO	30.87	16.12	1.16	0.62	0.89	0
CaO	0.41	18.25	10.99	0.36	0.34	0.18
Na ₂ O	0.39	0.6	4.06	0.27	0.35	0
K ₂ O	0.14	0.11	0.39	0.3	0.35	0.05
P ₂ O ₅	0	0.35	0.91	0.1	0.44	0

The angle of internal friction of JMSS-1 is approximately 40.6°, and the cohesion of this material is approximately 0.33 kPa. Figure 5 shows the Mohr stress circles which were used to determine the angle of internal friction and cohesion for of JMSS-1.

Reflectance spectra

The visible to near-IR spectra of JMSS-1, MMS sand, and JSC Mars-1 are shown in Fig. 6 (Allen et al. 1998; Peters et al. 2008). The reflectance spectrum of JMSS-1 is similar to those of JSC Mars-1 and MMS sand. Each has a rise in reflectance value from 400 to 700 nm, with an absorption band in the 900- to 1100-nm region, and

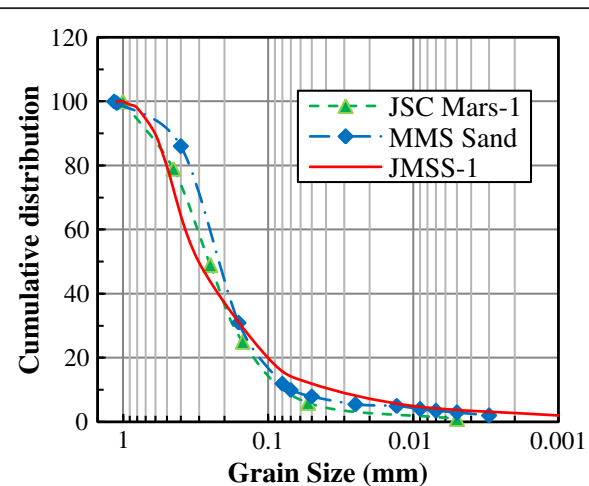


Fig. 4 Particle size distributions of JMSS-1, JSC Mars-1, and MMS sand. JMSS-1 (red curve) has a particle size distribution similar to those of JSC Mars-1 (green curve) and MMS sand (blue curve)

Table 4 Mechanical properties of JMSS-1, MMS, JSC Mars-1, and Martian regolith at different Mars landing sites

	Soil type	Bulk density (kg/cm ³)	Cohesion (kPa)	Internal friction angle (°)
JMSS-1	Soil simulant	1450	0.33	40.6
MMS sand ^a	Soil simulant	1341–1384	0.81–1.96	38–39
MMS dust ^a	Dust analog	911–1078	0.38–0.53	30–31
JSC Mars-1 ^b	Soil simulant	835	1.91	47
Spirit Rover ^c	Drift material	1200–1500	1–15	~20
Opportunity Rover ^d	Surface soil	~1300	1–5	~20
Pathfinder ^e	Drift material	1285–1518	0–0.42	34.3
Pathfinder ^e	Crusty material	1422–1636	0.17 ± 0.18	37.0 ± 2.6
Viking Lander 1 ^f	Drift material	1150 ± 150	1.6 ± 1.2	18.0 ± 2.4
Viking Lander 1 ^f	Blocky material	1600 ± 400	5.1 ± 2.7	30.8 ± 2.4
Viking Lander 2 ^f	Crusty material	1400 ± 200	1.1 ± 0.8	34.5 ± 4.7

^aPeters et al. (2008)

^bAllen et al. (1998)

^cArvidson et al. (2004a)

^dArvidson et al. (2004b)

^eMoore et al. (1999)

^fMoore and Jakosky (1989)

a generally flat reflectance from 1000 to 2400 nm as shown in Fig. 7. The existence of a band at 1900 nm in these simulant spectra is likely due to the presence of OH and H₂O.

Dielectric properties

Measurements of the dielectric properties of Martian soil simulant and other materials can help to anticipate radar performance on Mars, because radar signal penetration is influenced by the dielectric properties of the penetrated materials (Olhoef and Capron 1993; Williams and Greeley 2004). The dielectric constant (ϵ') and loss ($\tan\delta$) of JMSS-1 at 9370 MHz are about 5.9 and 0.07 (accuracy < 3 %), respectively.

Volatile content and hygroscopicity

In order to determine the volatile content of JMSS-1, a 10-g JMSS-1 sample was prepared for a heating experiment in a high-temperature furnace. The weight losses of JMSS-1 after 1 h range from ~1.49 wt% at 100 °C to ~4.7 wt% at 500 °C. These results represent total volatile loss, which is probably dominated by H₂O.

The hygroscopic property of the Martian soil simulant is an important parameter in experiments and tests, because its physical properties will probably change with the absorption of water. We prepared a 10-g JMSS-1 sample during a moderately humid day (20 °C and 50 % relative humidity). This sample was then place in a tank at a temperature of 20 °C and a humidity of 80 %. Its

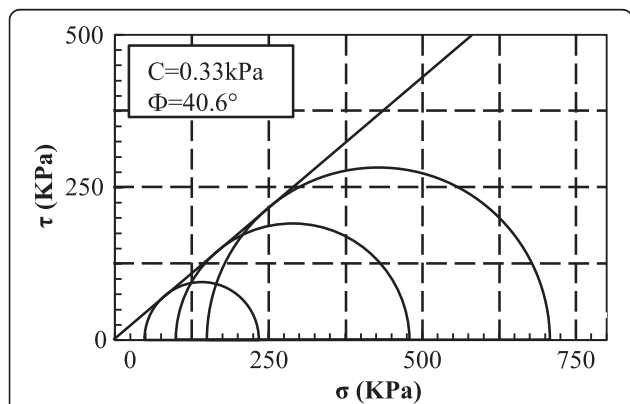


Fig. 5 CTC experiment of JMSS-1 Mohr stress circles. Mohr stress circles used to determine the angle of internal friction (40.6°) and cohesion (0.33 kPa) for JMSS-1

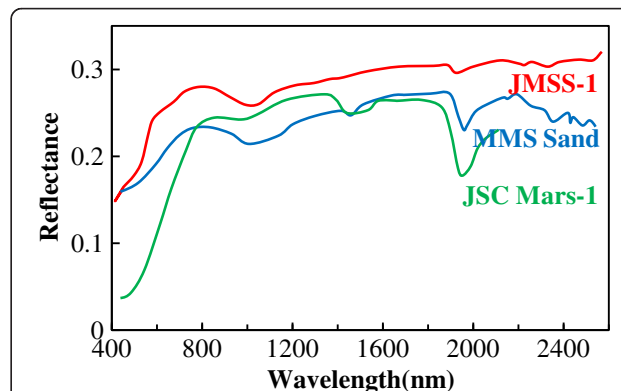
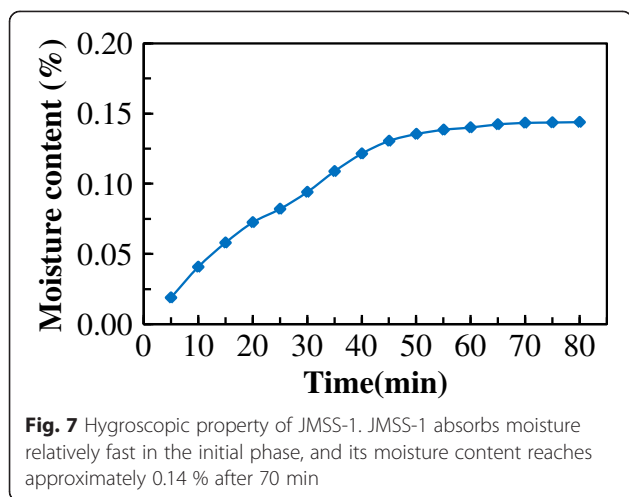


Fig. 6 Reflectance spectra of JMSS-1, JSC Mars-1, and MMS sand. Reflectance spectra of JMSS-1 (red curve) are similar to those of JSC Mars-1 (green curve) and MMS sand (blue curve) in the 400- to 2500-nm region



moisture content was measured every 5 min until the moisture content became approximately constant. Figure 7 presents the variation of moisture content against time, which indicates the hygroscopic property. During a 5-min period, JMSS-1 gained approximately 0.018 wt%. The moisture content then became approximately constant at 0.14 wt% after 70 min.

Discussion

Comparison with Martian soil

Much of the Martian surface is covered by unconsolidated soils derived from a variety of impact, eolian, and thermal cycle stresses, as well as chemical alterations, including reaction of the sulfate and/or ferric phases and salts with water provided either by the diurnal moisture variations over long time periods or by other more speculative forms of water (Bishop et al. 2002; Blake et al. 2013). Despite the presence of secondary alteration minerals, the ubiquity of olivine and pyroxene in Martian soil suggests that physical weathering has dominated over chemical weathering during the time that Martian soil has been exposed on the surface (Christensen et al. 2004b; McGlynn et al. 2012). JMSS-1 has undergone a mechanical crushing process that more closely resembles the physical weathering processes on Mars, where meteoric impact and wind abrasion provide mechanisms for comminution. This means that JMSS-1 more closely resembles the physical weathering product of basaltic rocks of Mars.

As shown in Table 1, Martian soil measured at six different landing sites shows homogeneity amongst its main chemical components. However, there are also regional and trace components in Martian soil, such as carbonate, chlorohydrocarbon, and glassy spherules identified at the Gale Crater (Blake et al. 2013; Leshin et al. 2013; Minitti et al. 2013). In situ measurements of soil samples indicate that Martian soil contains approximately 43–45 wt% SiO₂, 16–20 wt% FeO, 7–10 wt%

Al₂O₃, 6–9 wt% MgO, 6–8 wt% CaO, 0.7–0.9 wt% P₂O₅, and 5–8 wt% SO₃ (Banin et al. 1992; Foley et al. 2003; Gellert et al. 2004; Rieder et al. 2004; Blake et al. 2013). As shown in Table 1, compared to Martian soil, JMSS-1 has higher levels of SiO₂ (49.28 wt%) and Al₂O₃ (13.64 wt%) and lower levels of SO₃ and P₂O₅ (0.3 wt%).

Based on data from Mars rovers (Spirit, Opportunity, and Curiosity), Martian surface soil consists primarily of plagioclase, pyroxene, and olivine, with minor amounts of Fe and Ti oxides (e.g., magnetite, ilmenite, and hematite) and various alteration minerals (e.g., sulfates, phyllosilicates, and carbonate) (Yen et al. 2005; McSween et al. 2010; Bish et al. 2013). As for the composition of individual mineral phases in Martian soil at the Spirit, Opportunity, and Curiosity landing sites, plagioclase tends to be sodic to intermediate (~An57) in composition, olivine tends to be forsteritic olivine (~Fo62), and pyroxene tends to favor Ca-rich pyroxene (e.g., augite) with subordinate amounts of Ca-poor pyroxene (e.g., pigeonite) (Christensen et al. 2004a, b; Bish et al. 2013). These results are consistent with the mineralogy of JMSS-1, which is also dominated by plagioclase, pyroxene, and olivine, with minor amounts of magnetite, ilmenite, and hematite. In addition, the individual mineral phases in JMSS-1 tend to be calcic plagioclase (~An51–An60), forsteritic olivine (~Fo56–Fo70), and augite, respectively. These results demonstrate that JMSS-1 is a good mineralogical analog for the igneous mineral composition of Martian soil. It should be noted that JMSS-1 does not contain the alteration minerals that have been found in Martian soil. In order to simulate Martian soil more accurately, minor amounts of alteration minerals (e.g., sulfates, carbonates, and clays) need to be added to JMSS-1 in future work.

The Viking and Pathfinder missions estimated the magnetic materials in Martian soil to be 1–7 wt% (Hargraves et al. 1977; Madsen et al. 1999; Bertelsen et al. 2004). Magnetite is thought to be the main magnetic phase in Martian regolith, and hematite is thought to be responsible for the red surface of Mars (Hargraves et al. 1977, 1979; Moore and Jakosky 1989; Hviid et al. 1997; Madsen et al. 1999, 2003). This is consistent with JMSS-1, which has an average magnetic component (magnetite) of ~5 and ~2 wt% hematite.

Based on data from the Mars landers/rovers (Table 4), the bulk density and mechanical properties of JMSS-1 are within the range of Martian soil values. The grain size of JMSS-1 is also similar to Martian soil, with a particle size of approximately 10–500 μm observed by Viking, Pathfinder, Spirit, and Opportunity (Moore and Jakosky 1989; Moore et al. 1999; Golombek et al. 2008).

Comparison with other reported simulants

By way of comparison, JMSS-1 has similar chemical composition, mineralogy, and physical properties to the

Martian soil simulant currently in common use (JSC Mars-1 and MMS).

JSC Mars-1 is an altered volcanic ash mainly composed of plagioclase, along with minor Ti magnetite, Ca-rich pyroxene, olivine, glassy, ferric oxide particles, and less than 1 wt% of crystalline clay minerals or phyllosilicates (Allen et al. 1998). The significant difference between JSC Mars-1 and JMSS-1 is that JMSS-1 is largely crystalline and contains more pyroxene, olivine, and hematite, while JSC Mars-1 is primarily glassy in texture and contains ferric oxide particles. In addition, JMSS-1 has low levels of TiO₂ and Al₂O₃ and higher levels of SiO₂ and MgO compared to JSC Mars-1 (Table 1).

Compared to MMS, JMSS-1 contains less Al₂O₃ and CaO and more Fe₂O₃ (Table 1). The mineral composition of JMSS-1 is in agreement with that of MMS, which mainly consists of plagioclase and pyroxene, along with minor olivine, ilmenite, and hematite (Peters et al. 2008).

As for the magnetic properties, JMSS-1 contains ~5 wt% magnetite, which is the main magnetic phase in Martian regolith, whereas JSC Mars-1 has ~25 wt% Ti magnetite, and the weak magnetic mineral phases in MMS are most likely ilmenite and hematite (Moore and Jakosky 1989; Allen et al. 1998; Madsen et al. 1999; Bertelsen et al. 2004; Morris et al. 2006b; Peters et al. 2008).

The bulk density of JMSS-1 is significantly greater than those of JSC Mars-1 and MMS (Table 4), which is probably due to the addition of magnetite and hematite.

The volatile loss of JMSS-1 was ~1.49 wt% at 100 °C and ~4.7 wt% at 500 °C. This result is consistent with MMS, which has a volatile loss of 1.7 wt% at 100 °C, 7.2 wt% at 500 °C, and lower than values for JSC Mars-1 (volatile loss ranging from 7.8 wt% at 100 °C to 21.1 wt% at 600 °C) (Allen et al. 1998; Peters et al. 2008).

Conclusions

We identified a basaltic rock in China that is available as raw material for the development of a Martian soil simulant. A new Martian soil simulant, JMSS-1, was produced by mechanically crushing Jining basalt with the addition of small amounts of magnetite and hematite. This simulant has undergone a mechanical comminution process that closely resembles the physical weathering processes on Mars where meteoric impact and wind abrasion are the mechanisms for comminution. JMSS-1 has similar chemical composition, mineralogy, and physical properties to Martian basaltic soil and can be used for the testing of Mars landers/rovers, the development of future instruments, and other scientific and engineering experiments in China's Mars exploration program.

Abbreviation

JMSS-1: Jining Martian Soil Simulant.

Competing interests

The authors declare that they have no competing interests.

Authors' contributions

XZ prepared the samples, carried out the property measurements, and drafted the manuscript. XL and SW conceived the study. NS helped to edit the manuscript. SL, YL, HT, and JF participated in the design of the experiment. All authors read and approved the final manuscript.

Acknowledgements

We wish to thank Prof. Ping Shen, Prof. Binguang Liu, Prof. Fei Yu, Prof. Yongcun Zheng, Prof. Cunru Liu, Prof. Liming Zhou, and Prof. Xiangrong Yang for their kind help. We would also like to thank the anonymous reviewers for their suggestions and comments. This research was supported by the National Natural Science Foundation of China (Grant Nos. 41373067, 41403057, 41403059, and 41490630) and the West Light Foundation of the Chinese Academy of Sciences (Manufacture of lunar dust simulant).

Author details

¹Lunar and Planetary Science Research Center, Institute of Geochemistry, Chinese Academy of Sciences, Guiyang 55002, China. ²University of Chinese Academy of Sciences, Beijing 10049, China. ³School of Earth, Atmospheric and Environmental Sciences, University of Manchester, Manchester, UK.

Received: 14 November 2014 Accepted: 15 May 2015

Published online: 20 May 2015

References

- Allen CC, Jager KM, Morris RV, Lindstrom DJ, Lindstrom MM, Lockwood JP (1998) JSC Mars-1: a Martian soil simulant. *Space* 98:469–476
- Anderson RC, Beegle LW, Peters GH, Fleming GM, Jandura L, Kriechbaum K, Manatt K, Okon A, Pounders E, Sollitt L, Sunshine D (2009) Particle transport and distribution on the Mars Science Laboratory mission: effects of triboelectric charging. *Icarus* 204(2):545–557. doi:10.1016/j.icarus.2009.07.006
- Arvidson RE, Anderson RC, Bartlett P, Bell JF, Blaney D, Christensen PR, Chu P, Crumpler L, Davis K, Ehlmann BL, Fergason R, Golombek MP, Gorevan S, Grant JA, Greeley R, Guinness EA, Haldemann AFC, Herkenhoff K, Johnson J, Landis G, Li R, Lindemann R, McSween H, Ming DW, Myrick T, Richter L, Seelos FP, Squyres SW, Sullivan RJ, Wang A, Wilson J (2004a) Localization and physical properties experiments conducted by Spirit at Gusev Crater. *Science* 305(5685):821–824. doi:10.1126/science.1099922
- Arvidson RE, Anderson RC, Bartlett P, Bell JF, Christensen PR, Chu P, Davis K, Ehlmann BL, Golombek MP, Gorevan S, Guinness EA, Haldemann AFC, Herkenhoff KE, Landis G, Li R, Lindemann R, Ming DW, Myrick T, Parker T, Richter L, Seelos FP, Soderblom LA, Squyres SW, Sullivan RJ, Wilson J (2004b) Localization and physical property experiments conducted by opportunity at Meridiani Planum. *Science* 306(5702):1730–1733. doi:10.1126/science.1104211
- Banin A, Clark B, Wänke H (1992) Surface chemistry and mineralogy. *Mars* 1:594–625
- Beegle LW, Peters GH, Anderson RC, Bhatia R, Ball AG, Sollitt L (2009) Particle sieving and sorting under simulated Martian conditions. *Icarus* 204(2):687–696. doi:10.1016/j.icarus.2009.07.008
- Bertelsen P, Goetz W, Madsen MB, Kinch KM, Hviid SF, Knudsen JM, Gunnlaugsson HP, Merrison J, Nornberg P, Squyres SW, Bell JF, Herkenhoff KE, Gorevan S, Yen AS, Myrick T, Klingelhofer G, Rieder R, Gellert R (2004) Magnetic properties experiments on the Mars exploration rover Spirit at Gusev Crater. *Science* 305(5685):827–829. doi:10.1126/science.1100112
- Bish DL, Blake DF, Vaniman DT, Chipera SJ, Morris RV, Ming DW, Treiman AH, Sarrazin P, Morrison SM, Downs RT, Achilles CN, Yen AS, Bristow TF, Crisp JA, Morookian JM, Farmer JD, Rampe EB, Stolper EM, Spanovich N, Team MS (2013) X-ray diffraction results from Mars Science Laboratory: mineralogy of Rocknest at Gale Crater. *Science* 341:6153. doi:10.1126/Science.1238932
- Bishop J, Dummel A (1996) The influence of fine-grained hematite powder on the spectral properties of Mars soil analogs; VIS-NIR bi-directional reflectance spectroscopy of mixtures. In: Lunar and Planetary Institute Science Conference Abstracts., p 119
- Bishop JL, Murchie SL, Pieters CM, Zent AP (2002) A model for formation of dust, soil, and rock coatings on Mars: physical and chemical processes on the Martian surface. *J Geophys Res: Planets* (1991–2012) 107(E11):7, -1-7-17
- Blake DF, Morris RV, Kocurek G, Morrison SM, Downs RT, Bish D, Ming DW, Edgett KS, Rubin D, Goetz W, Madsen MB, Sullivan R, Gellert R, Campbell I, Treiman AH, McLennan SM, Yen AS, Grotzinger J, Vaniman DT, Chipera SJ, Achilles CN,

- Rampe EB, Sumner D, Meslin PY, Maurice S, Forni O, Gasnault O, Fisk M, Schmidt M, Mahaffy P, Leshin LA, Glavin D, Steele A, Freissinet C, Navarro-Gonzalez R, Yingst RA, Kah LC, Bridges N, Lewis KW, Bristow TF, Farmer JD, Crisp JA, Stolper EM, Marais DJD, Sarrazin P, Team MS (2013) Curiosity at Gale Crater, Mars: characterization and analysis of the Rocknest Sand Shadow. *Science* 341:6153. doi:10.1126/Science.1239505
- Brunskill C, Patel N, Gouache TP, Scott GP, Saaj CM, Matthews M, Cui L (2011) Characterisation of Martian soil simulants for the ExoMars rover testbed. *J Terramechanics* 48(6):419–438. doi:10.1016/j.jterra.2011.10.001
- Buhler CR, Calle CI (2003) Chemical implications due to the low electrical breakdown in the Martian atmosphere. *Proc of the Electrostatics Soc Am Laplainan Press, Morgan Hill, CA*, pp 565–579
- Christensen PR, Ruff SW, Ferguson RL, Knudson AT, Anwar S, Arvidson RE, Bandfield JL, Blaney DL, Budney C, Calvin WM, Glotch TD, Golombek MP, Gorelick N, Graff TG, Hamilton VE, Hayes A, Johnson JR, McSween HY, Mehall GL, Mehall LK, Moersch JE, Morris RV, Rogers AD, Smith MD, Squyres SW, Wolff MJ, Wyatt MB (2004a) Initial results from the Mini-TES experiment in Gusev Crater from the Spirit Rover. *Science* 305(5685):837–842. doi:10.1126/science.1100564
- Christensen PR, Wyatt MB, Glotch TD, Rogers AD, Anwar S, Arvidson RE, Bandfield JL, Blaney DL, Budney C, Calvin WM, Faracaro A, Ferguson RL, Gorelick N, Graff TG, Hamilton VE, Hayes AG, Johnson JR, Knudson AT, McSween HY, Mehall GL, Mehall LK, Moersch JE, Morris RV, Smith MD, Squyres SW, Ruff SW, Wolff MJ (2004b) Mineralogy at Meridiani Planum from the Mini-TES experiment on the Opportunity Rover. *Science* 306(5702):1733–1739. doi:10.1126/science.1104909
- ElShafie A, Chevrier VF, Dennis N (2012) Application of planetary analog mechanical properties to subsurface geological investigations. *Planet Space Sci* 73(1):224–232. doi:10.1016/j.pss.2012.09.001
- Foley CN, Economou TE, Clayton RN, Dietrich W (2003) Calibration of the Mars Pathfinder alpha proton X-ray spectrometer. *J Geophys Res Planets* 108:E12. doi:10.1029/2002je002018
- Gellert R, Rieder R, Anderson RC, Bruckner J, Clark BC, Dreibus G, Economou T, Klingelhofer G, Lugmair GW, Ming DW, Squyres SW, d'Uston C, Wanke H, Yen A, Zipfel J (2004) Chemistry of rocks and soils in Gusev Crater from the alpha particle X-ray spectrometer. *Science* 305(5685):829–832. doi:10.1126/science.1099913
- Golombek M, Haldemann A, Simpson R, Ferguson R, Putzig N, Arvidson R, Bell J III, Mellon M (2008) Martian surface properties from joint analysis of orbital, Earth-based, and surface observations. *The Martian Surface-Composition, Mineralogy, and Physical Properties* 1:468
- Gouache TP, Patel N, Brunskill C, Scott GP, Saaj CM, Matthews M, Cui L (2011) Soil simulant sourcing for the ExoMars rover testbed. *Planet Space Sci* 59(8):779–787. doi:10.1016/j.pss.2011.03.006
- Gross FB, Grek SB, Calle CI, Lee RU (2001) JSC Mars-1 Martian Regolith simulant particle charging experiments in a low pressure environment. *J Electrostat* 53(4):257–266. doi:10.1016/S0304-3886(01)00152-8
- Hargraves R, Collinson D, Arvidson R, Spitzer C (1977) The Viking magnetic properties experiment: primary mission results. *J Geophys Res* 82(28):4547–4558
- Hargraves RB, Collinson DW, Arvidson RE, Cates PM (1979) Viking magnetic-properties experiment—extended mission results. *J Geophys Res* 84:8379–8384. doi:10.1029/Jb084ib14p08379
- Hviid SF, Madsen MB, Gunnlaugsson HP, Goetz W, Knudsen JM, Hargraves RB, Smith P, Britt D, Dinesen AR, Mogensen CT, Olsen M, Pedersen CT, Vistisen L (1997) Magnetic properties experiments on the Mars Pathfinder lander: preliminary results. *Science* 278(5344):1768–1770. doi:10.1126/science.278.5344.1768
- Leshin L, Mahaffy P, Webster C, Cabane M, Coll P, Conrad P, Archer P, Atreya S, Brunner A, Buch A (2013) Volatile, isotope, and organic analysis of Martian fines with the Mars Curiosity Rover. *Science* 341(6153):1238937
- Madsen MB, Hviid SF, Gunnlaugsson HP, Knudsen JM, Goetz W, Pedersen CT, Dinesen AR, Mogensen CT, Olsen M, Hargraves RB (1999) The magnetic properties experiments on Mars Pathfinder. *J Geophys Res Planets* 104(E4):8761–8779. doi:10.1029/1998je000006
- Madsen MB, Bertelsen P, Goetz W, Binau CS, Olsen M, Folkmann F, Gunnlaugsson HP, Kinch KM, Knudsen JM, Merrison J, Nornberg P, Squyres SW, Yen AS, Rademacher JD, Gorevan S, Myrick T, Bartlett P (2003) Magnetic properties experiments on the Mars Exploration Rover mission. *J Geophys Res Planets* 108:E12. doi:10.1029/2002jf002029
- Marlow JJ, Martins Z, Sephton MA (2008) Mars on Earth: soil analogues for future Mars missions. *Astron Geophys* 49(2):20–23
- Mautner MN, Sinaj S (2002) Water-extractable and exchangeable phosphate in Martian and carbonaceous chondrite meteorites and in planetary soil analogs. *Geochim Cosmochim Acta* 66(17):3161–3174. doi:10.1016/S0016-7037(02)00910-9
- McGlynn IO, Fedo CM, McSween HY (2012) Soil mineralogy at the Mars Exploration Rover landing sites: an assessment of the competing roles of physical sorting and chemical weathering. *J Geophys Res Planets* 117:E01006. doi:10.1029/2011JE003861
- McSween HY, Ruff SW, Morris RV, Bell JF, Herkenhoff K, Gellert R, Stockstill KR, Tornabene LL, Squyres SW, Crisp JA, Christensen PR, McCoy TJ, Mittlefehldt DW, Schmidt M (2006) Alkaline volcanic rocks from the Columbia Hills, Gusev Crater, Mars. *J Geophys Res Planets* 111:E9. doi:10.1029/2006je002698
- McSween HY, Taylor GJ, Wyatt MB (2009) Elemental composition of the Martian crust. *Science* 324(5928):736–739. doi:10.1126/science.1165871
- McSween HY, McGlynn IO, Rogers AD (2010) Determining the modal mineralogy of Martian soils. *J Geophys Res: Planets* 115. doi: 10.1029/2010je003582
- Merrison JP, Gunnlaugsson HP, Hogg MR, Jensen M, Lykke JM, Madsen MB, Nielsen MB, Nornberg P, Ottosen TA, Pedersen RT, Pedersen S, Sorensen AV (2012) Factors affecting the electrification of wind-driven dust studied with laboratory simulations. *Planet Space Sci* 60(1):328–335. doi:10.1016/j.pss.2011.10.008
- Minitti M, Kah L, Yingst R, Edgett K, Anderson R, Beegle L, Carsten J, Deen R, Goetz W, Hardgrove C (2013) MAHLI at the Rocknest sand shadow: science and science-enabling activities. *J Geophys Res Planets* 118(11):2338–2360
- Moore HJ, Jakosky BM (1989) Viking landing sites, remote-sensing observations, and physical properties of Martian surface materials. *Icarus* 81(1):164–184
- Moore HJ, Bickler DB, Crisp JA, Eisen HJ, Gensler JA, Haldemann AFC, Matijevic JR, Reid LK, Pavlics F (1999) Soil-like deposits observed by Sojourner, the Pathfinder Rover. *J Geophys Res Planets* 104(E4):8729–8746. doi:10.1029/1998je000005
- Moroz LV, Basilevsky AT, Hiroi T, Rout SS, Baither D, van der Bogert CH, Yakovlev OI, Fisenko AV, Semjonova LF, Rusakov VS, Khramov DA, Zinovieva NG, Arnold G, Pieters CM (2009) Spectral properties of simulated impact glasses produced from Martian soil analogue JSC Mars-1. *Icarus* 202(1):336–353. doi:10.1016/j.icarus.2009.02.007
- Morris RV, Klingelhofer G, Bernhardt B, Schroder C, Rodionov DS, de Souza PA, Yen A, Gellert R, Evlanov EN, Foh J, Kankeleit E, Gutlich P, Ming DW, Renz F, Wdowiak T, Squyres SW, Arvidson RE (2004) Mineralogy at Gusev Crater from the Mossbauer spectrometer on the Spirit Rover. *Science* 305(5685):833–836. doi:10.1126/science.1100020
- Morris RV, Klingelhofer G, Schroder C, Rodionov DS, Yen A, Ming DW, de Souza PA, Fleischer I, Wdowiak T, Gellert R, Bernhardt B, Evlanov EN, Zubkov B, Foh J, Bonnes U, Kankeleit E, Gutlich P, Renz F, Squyres SW, Arvidson RE (2006a) Mossbauer mineralogy of rock, soil, and dust at Gusev Crater, Mars: Spirit's journey through weakly altered olivine basalt on the plains and pervasively altered basalt in the Columbia Hills. *J Geophys Res Planets* 111:E2. doi:10.1029/2005je002584
- Morris RV, Klingelhofer G, Schroder C, Rodionov DS, Yen A, Ming DW, de Souza PA, Wdowiak T, Fleischer I, Gellert R, Bernhardt B, Bonnes U, Cohen BA, Evlanov EN, Foh J, Gutlich P, Kankeleit E, McCoy T, Mittlefehldt DW, Renz F, Schmidt ME, Zubkov B, Squyres SW, Arvidson RE (2006b) Mossbauer mineralogy of rock, soil, and dust at Meridiani Planum, Mars: Opportunity's journey across sulfate-rich outcrop, basaltic sand and dust, and hematite lag deposits. *J Geophys Res Planets* 111:E12. doi:10.1029/2006je002791
- Nekvasil H, McCubbin FM, Harrington A, Elardo S, Lindsley DH (2009) Linking the Chassigny meteorite and the Martian surface rock Backstay: insights into igneous crustal differentiation processes on Mars. *Meteorit Planet Sci* 44(6):853–869
- Nørnberg P, Gunnlaugsson HP, Merrison JP, Vendelboe AL (2009) Salten Skov I: a Martian magnetic dust analogue. *Planet Space Sci* 57(5–6):628–631. doi:10.1016/j.pss.2008.08.017
- Olhoeft G, Capron DE (1993) Laboratory measurements of the radiofrequency electrical and magnetic properties of soils from near Yuma. US Department of the Interior, US Geological Survey, Arizona
- Ormond DR, Kral TA (2006) Washing methanogenic cells with the liquid fraction from a Mars soil simulant and water mixture. *J Microbiol Meth* 67(3):603–605. doi:10.1016/j.mimet.2006.05.007
- Peters GH, Abbey W, Bearman GH, Mungas GS, Smith JA, Anderson RC, Douglas S, Beegle LW (2008) Mojave Mars simulant—characterization of a new geologic Mars analog. *Icarus* 197(2):470–479. doi:10.1016/j.icarus.2008.05.004
- Pirrotta S (2010) Preliminary study on a novel coring system for planetary surface sampling. In: *Proceedings of the 7th International Planetary Probe Workshop, Barcelona (Spain)*, pp 14–18
- Rieder R, Gellert R, Anderson RC, Bruckner J, Clark BC, Dreibus G, Economou T, Klingelhofer G, Lugmair GW, Ming DW, Squyres SW, d'Uston C, Wanke H, Yen A, Zipfel J (2004) Chemistry of rocks and soils at Meridiani Planum from the alpha particle X-ray spectrometer. *Science* 306(5702):1746–1749. doi:10.1126/science.1104358

- Sharma R, Clark DW, Srirama PK, Mazumder MK (2008) Tribocharging characteristics of the Mars dust simulant (JSC Mars-1). *IEEE T Ind Appl* 44(1):32–39. doi:10.1109/Tia.2007.912761
- Taylor SR, McLennan S (2009) Planetary crusts: their composition, origin and evolution, vol 10. Cambridge University Press
- Wanke H, Bruckner J, Dreibus G, Rieder R, Ryabchikov I (2001) Chemical composition of rocks and soils at the Pathfinder site. *Space Sci Rev* 96(1–4):317–330. doi:10.1023/A:1011961725645
- Williams KK, Greeley R (2004) Measurements of dielectric loss factors due to a Martian dust analog. *J Geophys Res Planets* 109:E10. doi:10.1029/2002je001957
- Yen AS, Gellert R, Schroder C, Morris RV, Bell JF, Knudson AT, Clark BC, Ming DW, Crisp JA, Arvidson RE, Blaney D, Bruckner J, Christensen PR, DesMarais DJ, de Souza PA, Economou TE, Ghosh A, Hahn BC, Herkenhoff KE, Haskin LA, Hurowitz JA, Joliff BL, Johnson JR, Klingelhofer G, Madsen MB, McLennan SM, McSween HY, Richter L, Rieder R, Rodionov D, Soderblom L, Squyres SW, Tosca NJ, Wang A, Wyatt M, Zipfel J (2005) An integrated view of the chemistry and mineralogy of Martian soils. *Nature* 436(7047):49–54. doi:10.1038/Nature03637
- Yeomans B, Saaj CM, Van Winnendael M (2013) Walking planetary rovers—experimental analysis and modelling of leg thrust in loose granular soils. *J Terramechanics* 50(2):107–120. doi:10.1016/j.jterra.2013.01.006
- Zhang W, Han B, Du W, Liu Z (2005) Characteristics of mantle source for Jining Cenozoic basalts from southern Inner Mongolia: evidence from element and Sr-Nd-Pb isotopic geochemistry. *Acta Petrologica Sinica* 21(6):1569–1582
- Zheng YC, Wang SJ, Ouyang ZY, Li XY (2005) Measurement of the dielectric properties of volcanic scoria and basalt at 9370 MHz. *Acta Geol Sin Engl* 79(2):291–295

Submit your manuscript to a SpringerOpen[®] journal and benefit from:

- ▶ Convenient online submission
- ▶ Rigorous peer review
- ▶ Immediate publication on acceptance
- ▶ Open access: articles freely available online
- ▶ High visibility within the field
- ▶ Retaining the copyright to your article

Submit your next manuscript at ▶ springeropen.com
