

RESEARCH ARTICLE

Open Access



# Nanobodies targeting conserved epitopes on the major outer membrane protein of *Campylobacter* as potential tools for control of *Campylobacter* colonization

Charlotte Vanmarsenille<sup>1,2,3,4</sup>, Inés Díaz del Olmo<sup>1,2,3</sup>, Jelle Elseviers<sup>5</sup>, Gholamreza Hassanzadeh Ghassabeh<sup>5</sup>, Kristof Moonens<sup>1,2</sup>, Didier Vertommen<sup>6</sup>, An Martel<sup>4</sup>, Freddy Haesebrouck<sup>4</sup>, Frank Pasmans<sup>4</sup>, Jean-Pierre Hernalsteens<sup>3</sup> and Henri De Greve<sup>1,2\*</sup>

## Abstract

*Campylobacter* infections are among the most prevalent foodborne infections in humans, resulting in a massive disease burden worldwide. Broilers have been identified as the major source of campylobacteriosis and reducing *Campylobacter* loads in the broiler caeca has been proposed as an effective measure to decrease the number of infections in humans. Failure of current methods to control *Campylobacter* in broilers stresses the urgency to develop novel mitigation measures. We obtained six nanobodies with a broad specificity, that recognize strains belonging to the two most relevant species, *Campylobacter jejuni* and *Campylobacter coli*. The target of the nanobodies was identified as the major outer membrane protein, a porin that contributes to bacterial virulence and viability. Multimerization of the nanobodies led to agglutination of *C. jejuni* cells, which may affect colonization in the chicken gut. These *Campylobacter*-specific nanobodies may be useful to develop a strategy for preserving chickens from *Campylobacter* colonization.

## Introduction

Worldwide, *Campylobacter* is one of the most common causes of gastroenteritis [1, 2]. Less than 500 bacteria are required to establish infection, hence small amounts present in food or water can cause human infections [3]. The *Campylobacter* species mostly associated with infection, in both industrialized and developing countries, are *C. jejuni* and *C. coli* [4]. Typical clinical symptoms of *Campylobacter* infections in humans are abdominal cramps, diarrhoea and fever. Usually, *Campylobacter* enteritis is a self-limiting disease and antibiotic treatment is only necessary in persistent cases [5, 6]. However, infections with *C. jejuni* can lead to severe complications like the Guillain-Barré syndrome, a

paralyzing neuropathological disease [7, 8]. The favoured environmental reservoir of *C. jejuni* is the intestinal tract of poultry, that is considered the natural host of *C. jejuni*. The elevated body temperature of chickens (i.e. 42 °C) corresponds to the optimal growth temperature of *C. jejuni*, which makes them an outstanding reservoir for the bacteria [9]. *Campylobacter* mainly colonizes the mucus layer of the intestinal tract and is abundantly present in the caecum. Up to 10<sup>9</sup> CFU/g faecal content can be reached [10, 11]. At slaughter age, up to 80% of the flocks worldwide are contaminated with *Campylobacter* bacteria. Consumption and handling of contaminated poultry meat or carcasses are the most common causes of *Campylobacter* infections in humans [12–15].

Since poultry plays such an important role in transmission, a decrease of the colonization of poultry by *Campylobacter* will lead to a reduction of *Campylobacter*-related enteritis cases in humans [16]. Hygiene and biosafety play an essential role in the control of *Campylobacter*

\*Correspondence: henri.de.greve@vub.be

<sup>2</sup> Structural Biology Brussels, Vrije Universiteit Brussel, Pleinlaan 2, 1050 Brussels, Belgium

Full list of author information is available at the end of the article

infections in poultry, but these methods alone are not sufficiently effective and must be complemented with novel control approaches [17]. Still, no effective control measures are available to prevent or reduce the prevalence of *C. jejuni* in poultry during primary production [18, 19]. The addition of antibiotics to animal feed is not acceptable, as this leads to an increasing number of resistant strains which has serious consequences for the treatment of humans [20, 21]. Therefore, a wide range of alternative approaches have been screened. An effective vaccine has not yet been developed and the use of fatty acids, bioactive plant additives or probiotics did not lead to the desired *in vivo* effect [22–24]. Other alternatives, like the use of bacteriophages and bacteriocins, are more promising, however, more research is required [24–26]. Maternal anti-*Campylobacter* antibodies protect young chicks during the first 2–3 weeks [27, 28]. Consequently, the use of maternal antibodies, isolated from eggs of immunized hens, has been assessed for the passive immunization of infected chickens. The results were promising for the use as therapeutic treatment [29, 30].

In this study, we describe the isolation and characterization of nanobodies (Nb) recognizing multiple *Campylobacter* strains. Nanobodies are the antigen-binding domains of heavy chain antibodies found in Camelidae [31]. They possess a number of advantages over antibodies, which makes their use attractive for diagnostic and therapeutic purposes. Nanobodies interact with their antigen with high affinity and specificity, they are highly stable and soluble and can be expressed in microbial expression systems [32, 33]. The nanobodies isolated in this study bind with the major outer membrane protein (MOMP). Outer membrane proteins (OMP) play a major role in adhesion and invasion during *Campylobacter* infections [34]. Therefore nanobodies targeting these proteins could be interesting tools for the development of a control strategy. One of the outer membrane proteins important for virulence of *Campylobacter* is the MOMP, encoded by the *porA*-gene. MOMP is a conserved trimeric  $\beta$ -barrel porin involved in adhesion [35]. The porin is also essential for viability of *Campylobacter*, as its deletion results in a lethal phenotype [36, 37]. It is required for structural organization and stabilization of the outer membrane and it makes the diffusion possible of compounds, like nutrients and antibiotics, across the membrane [38, 39].

## Materials and methods

### Bacterial strains and growth condition

The bacterial strains that were used in this study are indicated in Table 1. *C. jejuni* KC40 was used as a reference strain. *C. jejuni* was grown on Nutrient Broth Nr.2, solidified with 1.5% agar (NB2, CM0067; Thermo Fisher

**Table 1 Bacterial strains used in this study**

Species	Strain	Source
<i>C. jejuni</i>	KC40	Environment chicken <sup>a++</sup>
	7P-6.12	Chicken <sup>a+</sup>
	10C-6.1	Chicken <sup>a+</sup>
	10KF-1.16	Chicken <sup>a+</sup>
	10KF-4.12	Chicken <sup>a+</sup>
	10VTDD-8	Chicken <sup>a+</sup>
	KC59.1	Chicken <sup>a*</sup>
	KC64.1	Chicken <sup>a*</sup>
	KC67.1	Chicken <sup>a*</sup>
	KC84.1	Chicken <sup>a*</sup>
	KC96.1	Chicken <sup>a*</sup>
	KC101	Environment chicken <sup>a*</sup>
	Cam12/0214	Human <sup>b</sup>
	Cam12/0231	Human <sup>b</sup>
	Cam12/0146	Human <sup>b</sup>
	Cam12/0152	Human <sup>b</sup>
	Cam12/0173	Human <sup>b</sup>
	Cam12/0197	Human <sup>b</sup>
Cam12/0156	Human <sup>b</sup>	
Cam12/0190	Human <sup>b</sup>	
Cam12/0202	Human <sup>b</sup>	
Cam12/0222	Human <sup>b</sup>	
Cam12/0183	Human <sup>b</sup>	
<i>C. coli</i>	52/P	Chicken <sup>c</sup>
	70/P	Chicken <sup>c</sup>
	K43/5	Chicken <sup>c</sup>
	KC7	Chicken <sup>c</sup>
<i>E. coli</i>	MB3361	Chicken <sup>c</sup>
	TG1	[68]
	DH5 $\alpha$	[69]
	WK6	[70]

\* The *fla*-DGGE analysis is described in Najdenski et al. [51].

+ The MLST results are described in Hermans et al. [30].

<sup>a</sup> Isolates obtained from a poultry farm or a slaughterhouse, provided by Dr. Marc Heyndrickx (Institute for Agricultural and Fisheries Research, Technology and Food Science Unit—Food Safety, Melle, Belgium).

<sup>b</sup> Clinical isolates obtained from faeces of infected patients, provided by Dr. D. Martiny (Microbiology Department, Iris-lab, Brussels, Belgium). MLST analysis showed that the isolates belong to different clonal complexes (CC-21, CC-464, CC-21, CC-206, CC-48, CC-45) (D. Martiny, personal communication).

<sup>c</sup> Isolates obtained from chickens, provided by Dr. Marc Heyndrickx (Institute for Agricultural and Fisheries Research, Technology and Food Science Unit—Food Safety, Melle, Belgium).

Scientific) under microaerobic conditions (Oxoid™ CampyGen™, Thermo Fisher Scientific) at 42 °C for 48 h. *Escherichia coli* strains were cultured on LB medium (Duchefa Biochemie), supplemented with the appropriate antibiotics if necessary.

### Phage library construction and selection of anti-*Campylobacter* nanobodies

A detailed protocol for immunization, generation of a nanobody library and selection by phage panning has been described [40]. *C. jejuni* KC40 cells were heat-inactivated at 55 °C for 1 h. An alpaca was injected six times with  $1.6 \times 10^8$  inactivated *C. jejuni* KC40. Peripheral lymphocytes were isolated from the blood of the immunized alpaca, from which RNA was isolated and converted to cDNA [40]. PCR on the cDNA was used to amplify the sequences encoding the variable domains of heavy chain antibodies. The resulting PCR fragments were cloned in the phage display vector pHen4 [41] and transformed in *E. coli* TG1 cells. Phage display was used for the selection of *Campylobacter*-specific nanobodies from the immune library. The phage library was panned twice against an outer membrane extract. Binding phages from the second panning were eluted and used for infection of *E. coli* TG1. From 95 individual *E. coli* TG1 transformants, a periplasmic extract was prepared and used in an ELISA, to confirm their specificity for the outer membrane extract of *Campylobacter*. Subsequently, the nanobody-encoding genes from 21 positive clones were amplified from the pHen4 plasmid for sequencing.

### Tagging of the nanobodies

The nanobodies were cloned in the pHen6C vector [42], designed for the introduction of a histidine-tag (His-tag) at the C-terminus. PCR was performed using In-Fusion primers IF-NB1 (5'-TGGCCAGGTGCAGCTGCAGGAGTCTGGAG-3') and IF-NB2 (5'-TGAGGAGACGTGACCTGGGTCC-3'). For the introduction of the PCR fragments in the pHen6C, the vector was digested with *Pst*I and *Bst*EII and the cloning was carried out with the In-Fusion<sup>®</sup> HD Cloning Kit (Takara Bio USA, Inc).

For the construction of the strep-tagged nanobodies, the pHen6C derivatives encoding the His-tagged nanobodies were used. The His-tag was removed using the *Bst*EII and *Eco*RI restriction enzymes. The strep-tag was introduced by ligation of annealed oligo's (5'-GTCACCGTCTCCTCATGGAGCCACCCGCAGTTCGAAAAATAAGTTTAAACTAC-3' and 5'-AATTTAGTTTAAACTTATTTTTCGAACTGCGGGTGGCTCCA TGAGGAGAC G-3') in the linearized pHen6C vectors.

The resulting constructs were transformed into  $\text{CaCl}_2$ -competent *E. coli* DH5 $\alpha$  [43] and transformants were selected on LB-agar plates supplemented with 100  $\mu\text{g}/\text{mL}$  carbenicillin. Colonies were screened by PCR with the primers FP24 (5'-CGCCAGGGTTTTC-CCAGTCACGAC-3') and RP24 (5'-AGCGGATAACAATTTACACAGGA-3'). PCR-positive colonies were sequenced to confirm that the constructs were correct.

### Expression and purification of anti-*Campylobacter* nanobodies

Clones encoding C-terminally His-tagged anti-*Campylobacter* nanobodies were introduced in *E. coli* WK6 for expression and purification. The bacterial cells were grown at 37 °C in LB medium supplemented with carbenicillin (100  $\mu\text{g}/\text{mL}$ ). When  $\text{OD}_{660 \text{ nm}}$  0.6–0.8 was reached, nanobody expression was induced at 30 °C by adding 1 mM isopropyl  $\beta$ -D-1 thiogalactopyranoside (Thermo Fisher Scientific). After overnight incubation, the periplasmic content was extracted and the nanobodies were purified.

His-tagged nanobodies were purified by nickel-affinity chromatography using HisTrap HP columns (GE Healthcare Life Sciences). The columns were equilibrated and washed with 20 mM Tris-HCl, 1 M NaCl, pH 8.0. Nanobodies were eluted using a linear gradient to 1 M imidazole. The eluted protein fractions were analysed by SDS-PAGE, using 12.5% acrylamide gels stained with Coomassie blue dye. The PageRuler<sup>™</sup> Prestained Protein Ladder (Thermo Fisher Scientific) is used as a molecular weight marker. Fractions containing pure nanobodies were pooled and dialyzed against phosphate-buffered saline (PBS).

Strep-tagged nanobodies were purified using Strep-Trap HP columns (GE Healthcare Life Sciences). These were equilibrated and washed with 100 mM Tris-HCl, 150 mM NaCl, 1 mM EDTA, pH 8.0 and nanobodies were eluted with a linear gradient to 2.5 mM desthiobiotin. Fractions containing pure nanobodies were dialyzed against PBS.

### Whole-bacterial cell ELISA

The interaction of the purified nanobodies, with different *C. jejuni* and *C. coli* isolates was assessed by means of a whole-cell ELISA. The bacteria were grown on NB2-agar plates and after 48 h the cells were harvested from the plates with PBS. The bacterial cells were centrifuged at 3600 *g* for 15 min and washed in PBS. Bacterial cells were fixed with 2.5% (v/v, final concentration) of methanol-stabilized 37% formaldehyde solution (Merck), followed by incubation for 100 min at 42 °C. Afterwards, the fixed bacterial cells were pelleted by centrifugation. The pellet was resuspended in coating buffer (150 mM  $\text{Na}_2\text{CO}_3$ , 46 mM  $\text{NaHCO}_3$ ) and the  $\text{OD}_{660}$  was adjusted to 0.3. From the suspension, 100  $\mu\text{L}$  per well was used to coat a 96-well plate. After overnight incubation at 4 °C, the plates were washed five times with PBS + 0.05% Tween<sup>®</sup>-20. To reduce nonspecific interactions, 200  $\mu\text{L}$  5% (w/v) bovine serum albumin (BSA) was used per well and incubated for 2 h. Subsequently, the wells were washed five times and 100  $\mu\text{L}/\text{well}$  of the anti-*Campylobacter* nanobodies (50  $\mu\text{g}/\text{mL}$ ) was added, followed by

1 h incubation at room temperature. Afterwards, mouse anti-Histidine tag monoclonal antibody (1:1000) (AbD Serotec) and goat anti-mouse IgG conjugated to alkaline phosphatase (AP) (1:5000) (Sigma-Aldrich) were added consecutively. The ELISA was developed by addition of 2 mg/mL para-nitrophenyl phosphate (p-NPP) in ELISA buffer (100 mM Tris-HCl, pH 9.5, 5 mM MgCl<sub>2</sub>, 100 mM NaCl). The OD was read at 405 nm.

#### Preparation of outer membrane extract

*Campylobacter jejuni* KC40 was cultured on NB2-agar plates and the bacterial cells were resuspended in 10 mM HEPES pH 7.4. The cells were lysed by passing the culture twice through the Cell Cracker (Glen Creston, Stanmore, VK, UK) at 1000 psi (pound-force per square inch) at 4 °C. To remove cell debris, the disrupted cell suspension was centrifuged at 12 000 g at 4 °C for 10 min. The further isolation of the outer membranes in the supernatant was performed as described [44], with the exception that, after the sarkosyl treatment, the membranes were centrifuged for 30 min instead of 1 h. The obtained OMPs were stored in 20 mM HEPES pH 7.4 at -20 °C.

#### Purification of the MOMP

The MOMP was purified from a total membrane extract. The outer membrane proteins were incubated in the presence of 0.3% n-octylpolyoxyethylene (octyl-POE) for 20 min at 4 °C. The insoluble proteins were pelleted by centrifugation at 100 000 g for 1 h. This step was repeated once, followed by two successive extraction steps with 0.5% octyl-POE. The obtained fractions were further purified using anion-exchange chromatography. A Resource Q column (GE Healthcare Life Sciences) was equilibrated with 20 mM sodium phosphate buffer pH 6.0 supplemented with 0.6% octyl-POE and the extracted proteins were loaded on the equilibrated column. Elution was achieved using a linear gradient to 1 M NaCl. The eluted fractions were analysed by SDS-PAGE, stained with Coomassie blue dye. Pure fractions were pooled and dialysed against 20 mM sodium phosphate buffer pH 7.6 supplemented with 0.6% octyl-POE.

#### Interaction of nanobodies and outer membrane proteins in ELISA

The interaction of the nanobodies with the outer membrane extract and the purified MOMP was investigated using ELISA. Native or denatured outer membrane extract and purified MOMP were coated in a 96-well plate at a concentration of 1 µg/mL. The ELISA was further carried out as described above. For the ELISA with outer membrane extract, tenfold serial dilutions were made of the anti-*Campylobacter* nanobodies, starting from 50 µg/mL.

#### Pull-down assay for antigen determination

To isolate OMP-Nb complexes, the Dynabeads® His-Tag Isolation and Pulldown kit (Thermo Fisher Scientific) was used. Twenty microliter of nanobodies (1.0 mg/mL) was added to 500 µL of the isolated outer membrane proteins (1.2 mg/mL) and the mixture was incubated for 2 h at 4 °C on a roller. The His-tagged nanobodies interact with the Co<sup>2+</sup>-coated magnetic beads. The procedure was followed as described in the manual, with the exception that the samples containing the OMP-Nb complexes were incubated overnight with the Dynabeads at 4 °C. An SDS-PAGE was performed on the eluted complexes and the gel was stained with the SilverQuest™ Silver Staining Kit (Thermo Fisher Scientific). The relevant protein bands were excised from the gel, destained and digested with trypsin for further analysis by liquid chromatography-tandem mass spectrometry (LC-MS/MS) as described [45].

Western blotting was performed on denatured and non-denatured proteins. The non-denatured samples, were run on a 12.5% acrylamide gel in running buffer composed of 14.4 g glycine, 3.03 g Tris and 0.250 g SDS per litre. After electrophoresis, the proteins were either transferred to a polyvinylidene difluoride (PVDF) membrane, activated with methanol, or stained with Coomassie blue dye. After transfer, the membrane was washed five times with PBS + 0.2% Triton X-100, followed by an incubation of 1 h at 4 °C with blocking buffer (PBS + 10% milk powder). The washing step was repeated in between every incubation step. The washed PVDF membrane was then incubated with 5 µg/mL anti-*Campylobacter* nanobody, diluted in PBS + 0.2% Triton X-100 + 5% milk powder, for 1 h at 4 °C. For the detection of the His-tagged nanobodies, a mouse anti-Histidine tag monoclonal antibody (1:1000) (AbD Serotec) was added and incubated for 1 h at 4 °C. The western blot was developed with a goat anti-mouse IgG conjugated to alkaline phosphatase (AP) (1:5000) (Sigma-Aldrich). After 1 h at 4 °C, substrate (50 µL NBT/BCIP in 100 mM Tris-HCl, pH 9.5, 5 mM MgCl<sub>2</sub>, 100 mM NaCl) was added to the membrane and incubated at 37 °C.

#### Microscale thermophoresis (MST)

MST, an immobilization-free method, was used for the characterization of the Nb-MOMP interaction. This technique allows the study of interactions of biomolecules in solution. A NanoTemper Monolith NT.115 instrument (NanoTemper Technologies) was used for the binding experiments, wherein a temperature gradient is formed in glass capillaries by means of an infrared laser. The movement of the biomolecules along this gradient is affected by changes in size or charge and modifications in their hydration shell. For the saturation binding

experiment, an anti-*Campylobacter* nanobody was fluorescently labelled via free amino-groups with Dylight 650 NHS Ester (Thermo Fisher Scientific). The labelled nanobody (constant concentration of 32 nM) was mixed with twofold serial dilutions of MOMP, ranging from 0.3 nM to 5.0  $\mu$ M. The interaction of the proteins was measured in 20 mM sodium phosphate buffer pH 7.6 supplemented with 150 mM NaCl and 0.6% octyl-POE. The samples were loaded into the glass capillaries (Monolith™ NT.Automated Standard Treated Capillary Chips), the thermophoresis measurements were performed (MST power 10% and LED 100%) and the data were analysed using the NT Analysis software (NanoTemper Technologies). Data were normalized to  $\Delta F_{norm}$  [%] [46]. A competition experiment was used to determine whether an unlabelled nanobody can impede the interaction of the labelled nanobody and the MOMP. In this experiment, the unlabelled nanobody was used at a constant concentration of 10  $\mu$ M and mixed with a twofold serial dilution of MOMP (0.3 nM to 5.0  $\mu$ M). Afterwards, the labelled nanobody was added to the suspension at a constant concentration of 32 nM. The experiment was further carried out as described above.

#### Saturation and competition binding assay

A saturation binding assay was performed using ELISA, to determine the interaction between a constant concentration MOMP (1  $\mu$ g/mL) and tenfold serial dilutions of His-tagged Nb84, ranging from  $5 \times 10^{-7}$  to  $5 \times 10^1$   $\mu$ g/mL. In a second experiment, the influence of competitors on this interaction was examined. Therefore MOMP (1  $\mu$ g/mL) was coated in a 96-well plate, after which serial dilutions (from  $5 \times 10^{-7}$  to  $5 \times 10^1$   $\mu$ g/mL) of strep-tagged anti-*Campylobacter* nanobodies, used as competitors, and a constant concentration of His-tagged Nb84 ( $5 \times 10^{-2}$   $\mu$ g/mL) were simultaneously added. Bound His-tagged nanobody was detected with a mouse anti-Histidine tag monoclonal antibody and goat anti-mouse IgG conjugated to alkaline phosphatase (AP).

#### Sequence analysis of *porA*-gene of *C. jejuni* and *C. coli* isolates

To analyse the genetic variability of MOMP between different *Campylobacter* strains, the *porA*-gene was amplified with primers F3 (5'-ATGAACTAGTTA AACTTAGTTTA-3') and R3 (5'-GAATTTGTAAAGA GCTTGAAG-3') [47]. A single colony of every isolate was resuspended in 50  $\mu$ L deionized H<sub>2</sub>O and the suspension was frozen at  $-80$  °C and subsequently boiled at 95 °C for 5 min. Of the suspension 1  $\mu$ L was used as a template.

#### Immunofluorescence microscopy

*Campylobacter jejuni* KC40 cells were fixed during 10 min with a final concentration (v/v) of 1.2% formaldehyde (methanol-stabilized, Merck). Fixed cells were spotted on 0.1% poly-L-lysine treated glass slides and dried. The microscope slides were treated with 5% BSA for 15 min, followed by the addition of 30  $\mu$ L anti-*Campylobacter* nanobodies (50  $\mu$ g/mL) and incubation for 1 h at room temperature. The bound nanobodies were detected in two consecutive steps. First, mouse anti-His monoclonal antibodies (1:200) (AbD Serotec) were added and incubated for 1 h at room temperature. Anti-mouse IgG conjugated to Alexa Fluor 488 (1:250) (Thermo Fisher Scientific) was then added for fluorescent labelling. After 1 h, the slides were washed with PBS and dried. As a negative control, anti-F4 nanobodies [48, 49] were used. In between every step, the glass plates were washed with PBS and dried.

#### Multimerization of nanobodies

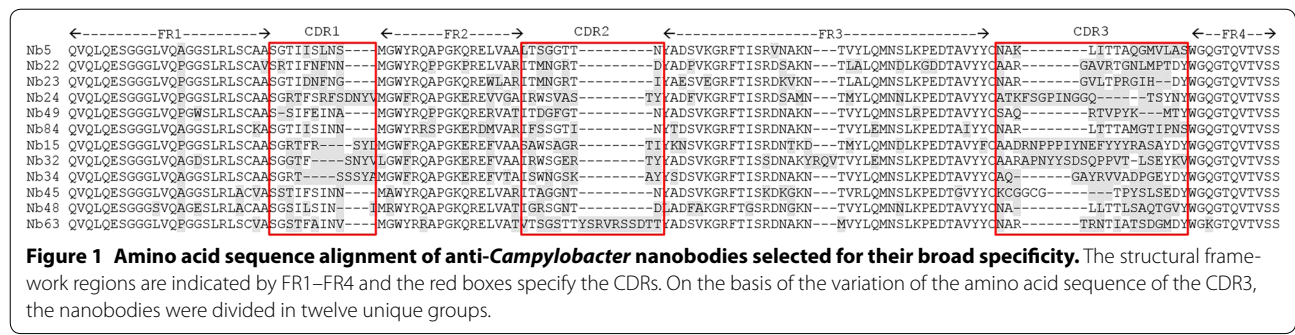
Selected nanobodies were coupled to Co<sup>2+</sup>-coated magnetic Dynabeads (Dynabeads® His-Tag Isolation and Pulldown, Thermo Fisher Scientific) to make them multivalent, using the buffers described in the manual. Nanobodies (24  $\mu$ g) were added to 300  $\mu$ g of Dynabeads and the mixture was incubated at room temperature during 10 min on a roller. Hereafter, the beads were washed three times to remove the unbound nanobodies and the nanobody-coupled beads were stored in pull-down buffer at 4 °C.

*Campylobacter jejuni* KC40 cells were harvested from NB2-agar plates with NB2 medium and a suspension with OD<sub>660</sub> 2.0 was used for the agglutination assay. The bacterial cells and nanobody-coupled beads were mixed in a 1:4 ratio in a final volume of 10  $\mu$ L on a slide. The slides were incubated at room temperature and examined visually and by phase contrast microscopy for agglutination. As a negative control, the agglutination of *Campylobacter* bacteria in the presence of beads coupled with anti-F4 nanobodies was assessed [48, 49].

## Results

#### Isolation of anti-*Campylobacter* nanobodies with a broad specificity

To generate an immune library, an alpaca was immunized with heat-inactivated KC40 bacteria. From this library, 21 *Campylobacter*-specific nanobodies were obtained after two consecutive panning rounds against an outer membrane fraction of the *C. jejuni* strain KC40. These nanobodies belong to 12 different families (Figure 1) showing less than 80% identity in their

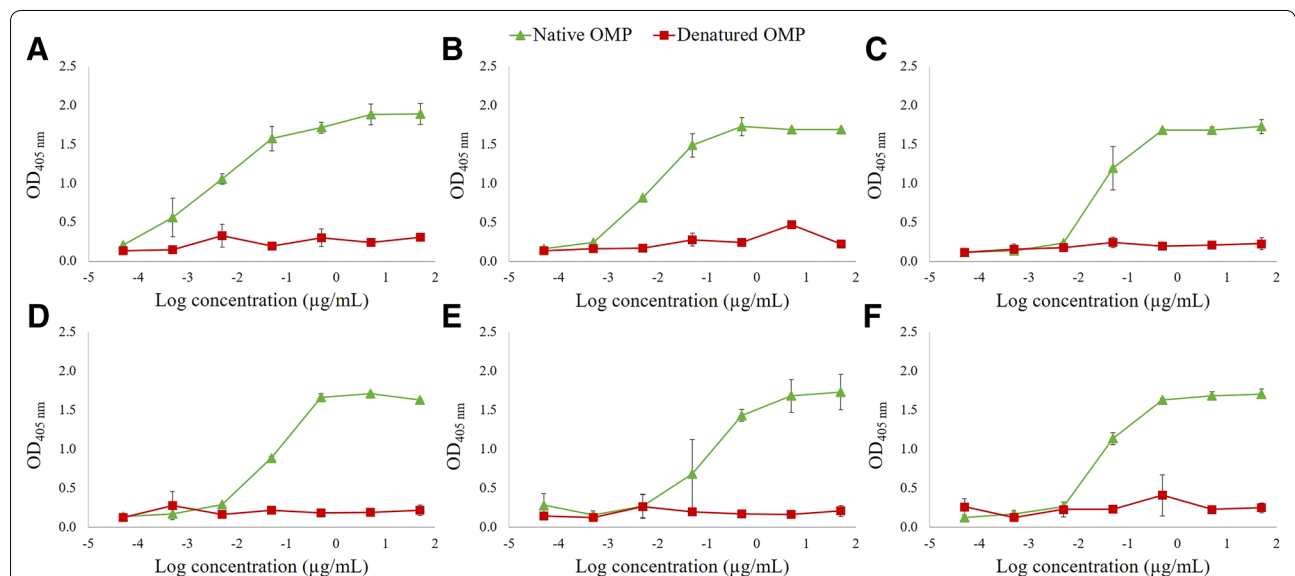


complementarity-determining region 3 (CDR3), as defined by Pardon et al. [40]. A significant level of diversity is found among *Campylobacter* strains isolated from poultry [50]. For this reason, we selected one nanobody from each family and examined whether these display a broad detection range by testing their binding with *Campylobacter* strains [30, 51], belonging to different subtypes (Table 1). Whole-cell ELISA analysis showed that the six anti-*Campylobacter* nanobodies have a broad specificity range (Additional file 1). They interacted with all 23 tested *C. jejuni* strains, both from chickens and human patients, and with the 5 tested *C. coli* isolates. These data suggest that these nanobodies recognize conserved antigens on the cell surface of the *Campylobacter* strains.

**Nanobodies interact with folded outer membrane proteins**  
Whole-cell ELISA showed that the six nanobodies with broad specificity recognize epitopes exposed on the bacterial cell surface. ELISA was used to determine whether the nanobodies recognize conformational or linear epitopes (Figure 2). The nanobodies showed strong binding with native outer membrane proteins, while the interaction was significantly reduced after denaturation of the outer membrane proteins. These results indicate that the nanobodies bind to conformational epitopes present on outer membrane proteins.

**MOMP is the target of the isolated anti-*Campylobacter* nanobodies**

To determine the antigens recognized by the six nanobodies with broad specificity, a pull-down experiment



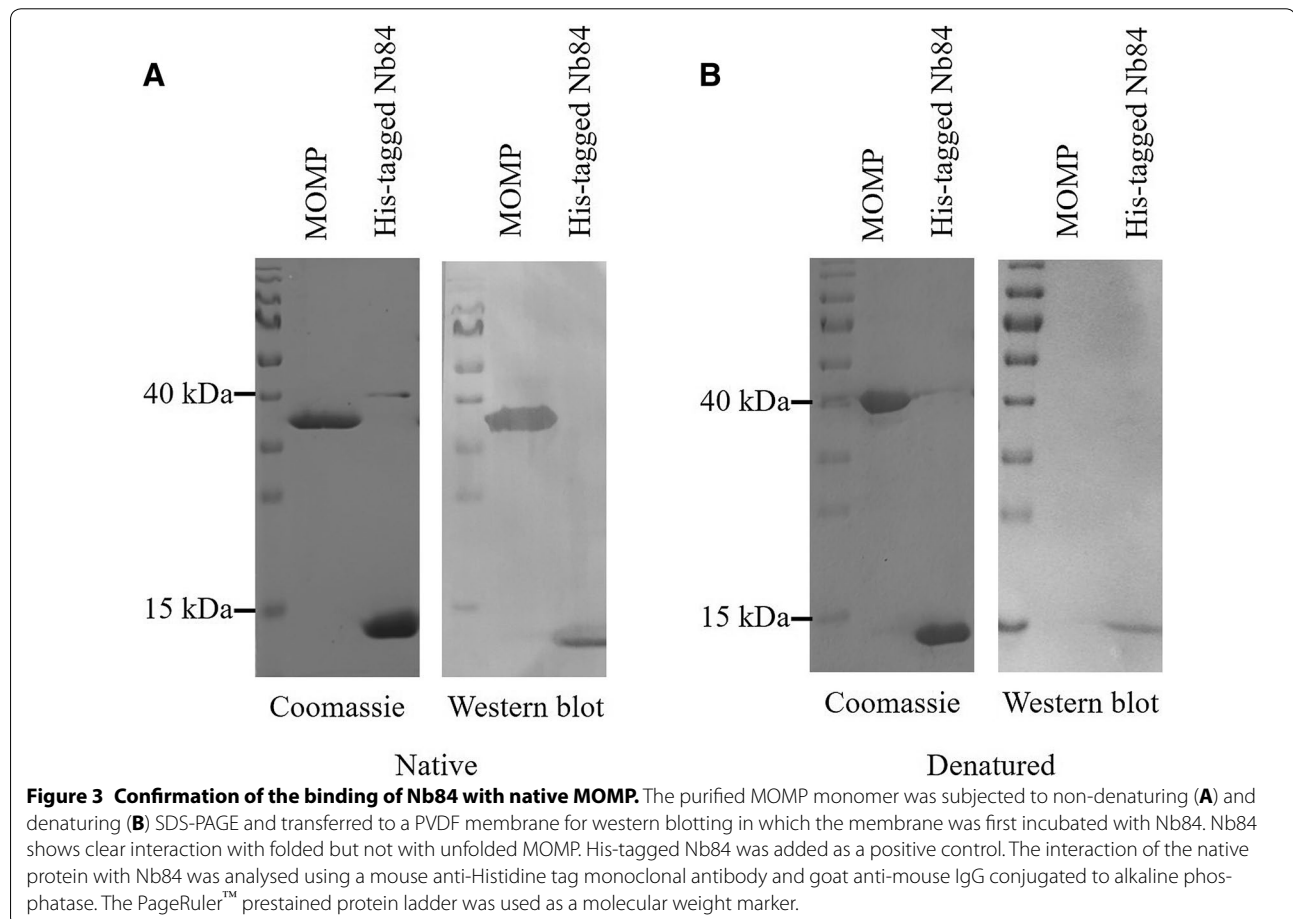
**Figure 2 Anti-*Campylobacter* nanobodies interact with native outer membrane proteins.** Serial tenfold dilutions of the nanobodies were used in ELISA to assess the binding with linear or conformational epitopes. OMPs (1 µg/mL) were coated in a 96-well plate and the interaction of His-tagged nanobodies with native, untreated OMP, and with denatured protein extract was measured. Binding of **A** Nb5, **B** Nb22, **C** Nb23, **D** Nb24, **E** Nb49 and **F** Nb84 was measured. For detection, mouse anti-Histidine tag monoclonal antibody and goat anti-mouse IgG conjugated to alkaline phosphatase were used. The error bars represent the standard deviations.

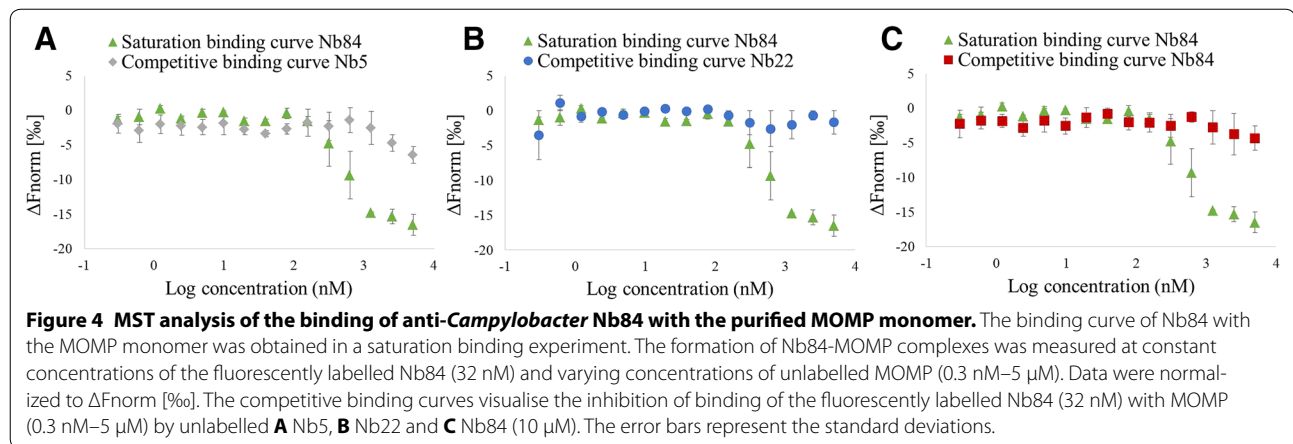
with magnetic beads was performed. Complexes with an outer membrane protein were isolated with three of the six nanobodies (Nb5, Nb22 and Nb84). The bound proteins were digested with trypsin and the peptides were analysed by LC–MS/MS. In each case, the amino acid sequences of the peptides corresponded to the MOMP sequence of *C. jejuni* NCTC 11168 (UniProtKB - P80672) (Additional file 2), a porin that is a crucial virulence factor of *Campylobacter*. The MOMP was subsequently purified from *C. jejuni* KC40 bacteria and binding with the three nanobodies was confirmed by western blotting. The binding of Nb84 with native MOMP is shown in Figure 3A. The western blot clearly shows a protein band corresponding to native MOMP. The western blot with the nanobodies shows no interaction with the denatured MOMP (Figure 3B). This confirms the interaction with surface-exposed epitopes of MOMP. Similar results were obtained for the five other nanobodies with broad specificity. ELISA further showed that the other nanobodies with less broad specificity also recognize native MOMP (Additional file 3).

#### Affinity determination and competitive binding assay

We determined the strength of the interaction between MOMP and the nanobodies Nb5, Nb22 and Nb84 using microscale thermophoresis (MST). Therefore, the nanobodies were fluorescently labelled and incubated with increasing concentrations of MOMP (Figure 4; Additional file 4). Changes in the thermophoretic properties upon complex formation were plotted, to obtain information on the dissociation constant ( $K_D$ -value). Nb22 and Nb84 bind MOMP with intermediate nanomolar affinities ( $K_D = 118 \pm 48$  nM and  $K_D = 422 \pm 159$  nM, respectively). For Nb5, it was not possible to determine the dissociation constant because of a high signal to noise ratio.

The specificity of the binding curves was confirmed by adding an excess of the same unlabelled nanobody, which resulted in a loss of the MST signal (Figure 4C). In addition, a competitive MST assay was performed by adding an excess of a different unlabelled nanobody, that can potentially compete with the binding of the labelled nanobody to MOMP. When adding either unlabelled Nb5 or Nb22, no clear shift in the MST signal, corresponding to



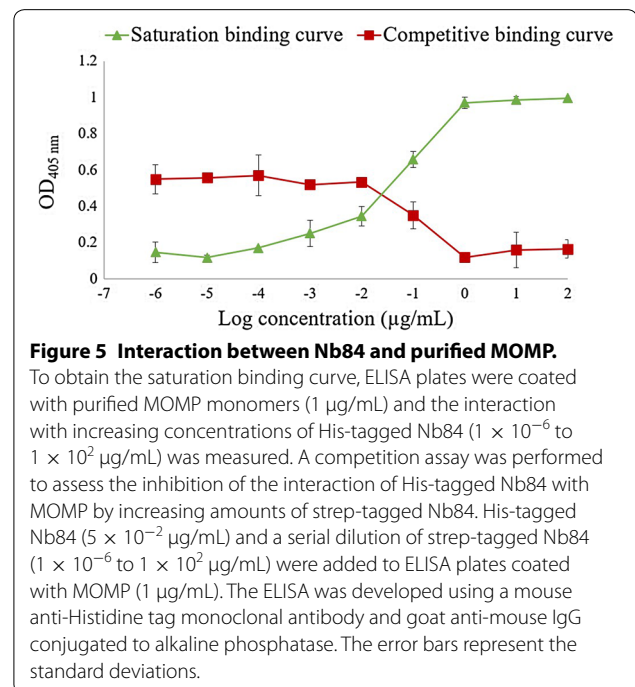


the binding of labelled Nb84 to MOMP, was observed (Figures 4A and B). These data show that these nanobodies do not bind the antigen simultaneously, suggesting that they may recognize the same, adjacent or overlapping epitopes. However, we cannot exclude the possibility that these nanobodies may still bind to different epitopes and interfere with each other's binding by inducing conformational changes.

To confirm the findings of the MST competition assay, we set up a competitive ELISA. The influence of strep-tagged nanobodies, of the 12 different families, on the binding of His-tagged Nb84 to MOMP was assessed (Figure 5; Additional file 5). Dose-dependent inhibition of the binding was confirmed for nine of the twelve nanobodies. For the other three nanobodies (Nb32, Nb34 and Nb45), it was shown that they could bind to MOMP simultaneously with Nb84, which indicates they recognize different epitopes.

#### Variability in the *porA*-gene encoding MOMP

The MOMP of *C. jejuni* and *C. coli* is characterised by high genetic diversity. Little variability is observed in the transmembrane domains, in contrast to high variability in the extracellular loops [52]. The MOMP-encoding *porA*-gene of the 23 *C. jejuni* and the 5 *C. coli* strains was PCR-amplified and sequenced (Additional file 6). Based on the MOMP structure solved by Ferrara et al. [39], the extracellular loops and  $\beta$ -strands were identified in the sequence. Since the broad specificity range nanobodies bind to the surface of *Campylobacter* cells, we can assume that they interact with one of the surface-exposed loops of MOMP. These loops are however most variable amongst the sequenced MOMP genes. Sequence analysis shows that the extracellular loops L3 and L6 are the most conserved, in length and amino acid sequence, making these prime candidates to be recognized by the six nanobodies with a broad specificity range. Mapping of the sequences on the structure of MOMP confirms that the highest variability is located in the extracellular loops,



while the sequence in the  $\beta$ -barrel structure is highly conserved (Additional file 7).

The sequence diversity in L3 and L6 in different *C. jejuni* and *C. coli* strains was analysed (Additional file 8). The MOMP encoding sequences in the MLSTdb database [53] were used for the analysis of the L6 region. Since the sequence of L3 is not present in the MLSTdb database, sequences were obtained from the NCBI database using Blastp with the *porA* sequence from *C. jejuni* KC40 as a query [54]. Comparison of the *porA* amino acid sequences, showed that the majority (81.9% or 1827 out of 2230) of analysed Loop 6 sequences and 92.5% (620 out of 670) of analysed Loop 3 sequences all carry amino acid substitutions at positions found in the L6 and



L3 loops of the 28 MOMPs analysed in this study. From our study, we know that these amino acid substitutions in the L3 and L6 loops of MOMPs do not impede nanobody binding. The remaining 18.1% (403 of 2230) in case of L6 and 7.5% (50 of 670) encoding L3, contain amino acid changes on other positions. This does not imply that our six nanobodies with broad specificity would not bind these MOMP variants.

#### Interaction of anti-*Campylobacter* nanobodies with the bacterial cell surface

Immunofluorescence microscopy was used to confirm the interaction of Nb22, Nb23 and Nb84 with the surface of *C. jejuni* KC40 cells (Figure 6). The results show clear fluorescence with the *Campylobacter*-specific nanobodies, in comparison with an anti-*E. coli* nanobody that was used as a negative control.

To explore whether the anti-*Campylobacter* nanobodies could agglutinate living *C. jejuni* KC40 cells, the six selected nanobodies were made multivalent, by coupling them to magnetic Dynabeads via their histidine tag. Clear agglutination was observed when *C. jejuni* KC40 cells were added (Figure 7A). Here the results of Nb84 with *C. jejuni* KC40 are shown. Beads, coated with an anti-*E. coli* nanobody, were used as a negative control and caused no visible agglutination of *Campylobacter* (Figure 7B). Additional negative controls were the *Campylobacter* bacteria and the beads coated with nanobodies alone (Figures 7C and D). The results confirm that the *Campylobacter*-specific nanobodies can bind with surface-exposed epitopes of *C. jejuni* KC40 and agglutinate the latter.

#### Discussion

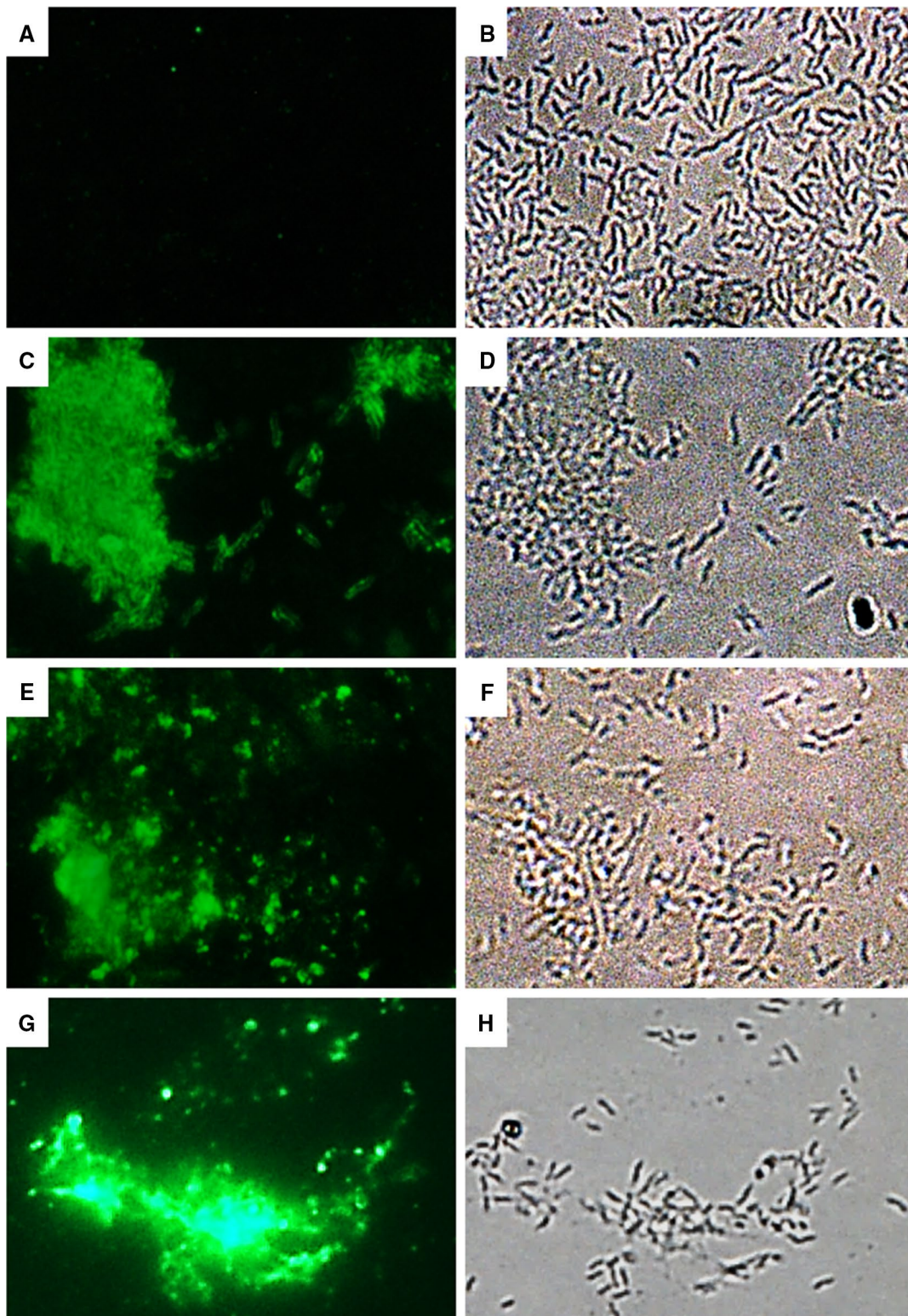
Substantial diversity of *Campylobacter* strains is found within broiler flocks and broilers are often colonized with multiple strains of *C. jejuni* [55]. Co-colonization by *C. jejuni* and *C. coli* has also been observed [13, 56]. Phage display technology was used to obtain a nanobody-library against the *C. jejuni* strain KC40. Here we selected six anti-*Campylobacter* nanobodies that interact with the cell surface of 23 different *C. jejuni* isolates derived from a poultry farm, poultry carcasses or faeces of human patients, as well as with 5 *C. coli* isolates.

Next, MOMP was identified as the antigen recognized by twelve nanobodies, from which six show a broad specificity. Since MOMP is an abundant protein in the outer membrane and since it is highly immunogenic [57], these findings are not surprising. MOMP is an essential porin for *Campylobacter* bacteria, as deletion of the *porA*-gene is lethal, and it is a key virulence factor, crucial for colonization [36, 37]. Islam et al. showed that the administration of recombinant MOMP, leads to protection of mice

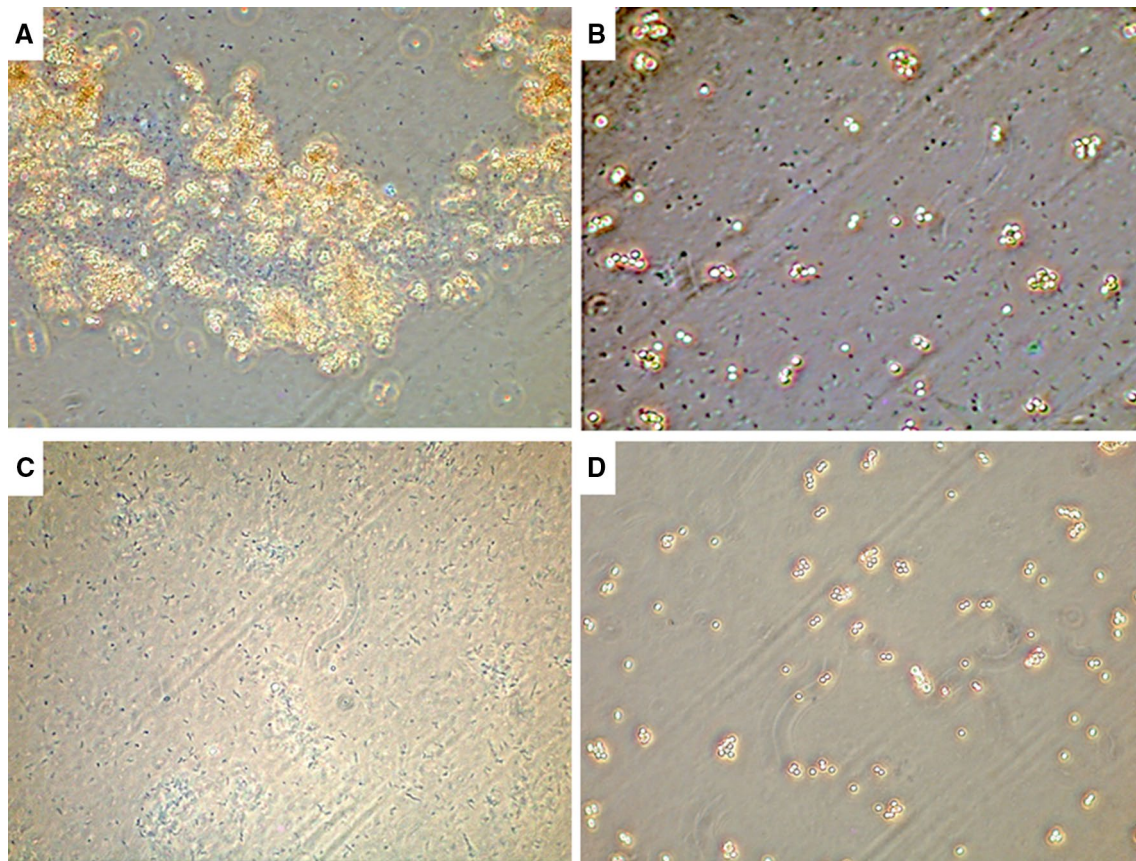
against colonization by heterologous *C. jejuni* strains [58]. Nanobodies targeting MOMP may interfere with its function and reduce colonization. Sequence analysis of the *porA*-gene of the 28 isolates showed that the extracellular Loop 3 and Loop 6 are the most conserved. These loops are potential candidates to be recognized by the nanobodies. The sequence diversity in these loops in the publicly available *porA*-sequences, was analysed. The results indicate that 92.5% of the analysed Loop 3 and 81.9% of the analysed Loop 6 sequences, carry amino acid substitutions at positions also found in the Loop 3 and Loop 6 sequences of the 28 isolates used in this study and do not influence the nanobody binding.

The anti-*Campylobacter* nanobodies were shown to interact with conformational epitopes on MOMP. Competition experiments showed that nine of the twelve anti-*Campylobacter* nanobodies could compete with each other's binding to MOMP. This is an indication that they recognize the same or overlapping epitopes. Three of the anti-*Campylobacter* nanobodies were not able to inhibit the interaction of Nb84 with MOMP, hence they can simultaneously bind with MOMP. For Nb5, Nb22 and Nb84, affinity measurements were performed. Nb22 and Nb84 were shown to interact with MOMP with high-nanomolar affinities. However affinity measurements with Nb5 gave no consistent results. The binding strength of the nanobodies can presumably be further increased by the generation of a bivalent construct. By using a flexible peptide linker, dimers can be formed by coupling two nanobodies with the same specificity, resulting in higher avidity, or by combining two nanobodies binding different epitopes, creating bi-specific constructs [59].

The monovalent character and the small size of nanobodies, lead to rapid clearance. Multimerization of nanobodies can increase the retention. The results show that multimerization of the anti-*Campylobacter* nanobodies by non-covalent coupling to magnetic beads, resulted in agglutination of *C. jejuni* cells. Nanobodies can be multimerized by surface-expression on Generally Recognized As Safe (GRAS) organisms [60]. Agglutination typically takes place at high bacterial densities [61]. In the gut agglutination of *Campylobacter* could promote its removal and reduce colonization [62, 63]. Alternatively, Moor et al. showed that high-avidity IgA promotes the enchained growth of bacterial cells, leading to the formation of clumps. The latter mainly takes place at lower cell densities and leads to an enhanced clearance of the bacteria [61]. Viridi et al. [49] fused nanobodies against F4 fimbriae of enterotoxigenic *E. coli* (ETEC), with the Fc-domain of porcine IgA. *Arabidopsis thaliana* seeds were used for the expression of these constructs and passive vaccination with the seeds resulted in the protection of weaned piglets against ETEC-infections. Chicken feed



**Figure 6** Detection of the interaction of anti-*Campylobacter* nanobodies and *C. jejuni* KC40 by immunofluorescence microscopy. The interaction was detected by (A, C, E, G) immunofluorescence microscopy and the *C. jejuni* cells (B, D, F, H) were visualised by bright field microscopy. A, B A nanobody specific for F4-fimbriated enterotoxigenic *E. coli* shows no binding with the *C. jejuni* cells. C, D; E, F and G, H The anti-*Campylobacter* nanobodies Nb22, Nb23 and Nb84 respectively, binds specifically with the *C. jejuni* cells.



**Figure 7 Nanobody-coated beads agglutinate *C. jejuni* KC40 cells.** The His-tagged nanobodies were coupled to magnetic dynabeads, leading to multimerization. **A** Nb84 coupled to dynabeads causes agglutination of KC40 cells. **B** As a negative control, dynabeads coated with anti-*E. coli* nanobodies were mixed with KC40 cells. No agglutination was observed in this case. **C** The *C. jejuni* KC40 bacteria and **D** the beads coated with Nb84. The results were observed by phase contrast microscopy, using a  $\times 100$  oil immersion objective.

supplemented with seeds containing anti-MOMP nanobodies, fused to the effector domains of chicken IgA or IgY, may, in a similar way, be used as a therapeutic agent against *Campylobacter* infection. The work described in this study, forms the basis for the development of such chimeric antibodies. The advantages of seeds include inexpensive production by standard agricultural practices, excellent stability of the antibodies in the seeds and the possible protection of the nanobodies against degradation in the gastrointestinal tract of the chickens [64]. Riaz et al. [65] reported that pentamers of flagella-specific nanobodies interfere with the motility of *C. jejuni* and lead to the reduction of colonization by *C. jejuni* in the caecum of treated chickens.

In conclusion, we isolated nanobodies against the essential virulence factor MOMP. Since these recognize conserved epitopes, present on *C. jejuni* and *C. coli* strains, they could potentially be used in therapy and as a diagnostic tool [49, 65–67].

## Additional files

**Additional file 1. Results of the ELISA performed to measure the binding of anti-*Campylobacter* nanobodies to different *Campylobacter* isolates.** Whole-cell ELISA was used to identify the anti-*Campylobacter* nanobodies with a broad specificity. *C. jejuni* isolates from poultry or faeces of human patients, as well as *C. coli* strains were tested.

**Additional file 2. LC-MS/MS identifies the MOMP as a target for the nanobodies.** Proteins recognized by the anti-*Campylobacter* nanobodies were isolated by a pull-down. After digestion of the proteins with trypsin, the peptides were analysed via LC-MS. The five peptides corresponding with the MOMP of *C. jejuni* NCTC 11168 (UniProtKB - P80672) are specified by the black boxes.

**Additional file 3. ELISA to determine the binding of anti-*Campylobacter* nanobodies to MOMP.** Purified MOMP (1  $\mu\text{g}/\text{mL}$ ) was coated and nanobodies were subsequently added at a concentration of 50  $\mu\text{g}/\text{mL}$ . Mouse anti-Histidine tag monoclonal antibody and goat anti-mouse IgG conjugated to alkaline phosphatase were used for the development of the ELISA. The experiment was performed in duplicate and the mean of the obtained results is shown. The error bars represent the standard deviations. As a negative control, an anti-F4 nanobody was used.

**Additional file 4. Binding curve of Nb22 with purified MOMP obtained in a saturation binding experiment using MST analysis.**

The formation of Nb22-MOMP complexes was measured at constant concentrations of the fluorescently labelled Nb22 (32 nM) and varying concentrations of unlabelled MOMP (0.3 nM to 5  $\mu$ M). Data were normalized to  $\Delta F_{norm}$  [%]. The error bars represent the standard deviations.

**Additional file 5. ELISA to assess the interaction between *Campylobacter*-specific nanobodies and purified MOMP.** The saturation binding curve of the interaction between coated MOMP (1  $\mu$ g/mL) and a His-tagged nanobody (1  $\times 10^{-6}$  to 1  $\times 10^2$   $\mu$ g/mL) was obtained via ELISA. The dose-dependent inhibitory effect of a strep-tagged nanobody (1  $\times 10^{-6}$  to 1  $\times 10^2$   $\mu$ g/mL) on the interaction between His-tagged Nb84 (5.10<sup>-2</sup>  $\mu$ g/mL) and MOMP (1  $\mu$ g/mL), is demonstrated in the competition binding curve. Inhibition by strep-tagged (A) Nb5, (B) Nb22, (C) Nb23, (D) Nb24, (E) Nb49, (F) 84, (G) Nb15, (H) Nb32, (I) Nb34, (J) Nb45, (K) Nb48 and (L) Nb63, was assessed. The ELISA was developed with mouse anti-Histidine tag monoclonal antibody and goat anti-mouse IgG conjugated to alkaline phosphatase. The error bars represent the standard deviations.

**Additional file 6. Alignment of amino acid sequences of the MOMP-encoding *porA*-gene.** The *porA* gene of the *C. jejuni* and *C. coli* isolates (Table 1) was amplified using PCR and aligned, using *C. jejuni* KC40 as a reference strain, to identify conserved regions. The PCR was performed with the primers F3 (5'-ATGAACTAGTTAACTTAGTTTA-3') and R3 (5'-GAATTTGTAAGAGCTTGAAG-3'). External loops are labelled from L1 to L7 and  $\beta$ -strands are underlined, based on the MOMP structure determined by Ferrara et al. [39]. Loops L3 and L6 are the most conserved in sequence and number of amino acids.

**Additional file 7. Sequence conservation of *porA* gene mapped on MOMP crystal structure.** The sequence conservation in the alignment of the *porA* gene of 28 *Campylobacter* isolates (Table 1), is visualised on the surface of MOMP. Blue corresponds to high amino acid sequence conservation and white with low conservation. High variability is observed in the extracellular loops, while the sequence encoding the transmembrane  $\beta$ -barrel is highly conserved. (Left) side view and (right) top view.

**Additional file 8. Sequence variability in L3 and L6 of the MOMP encoding sequences from *C. jejuni* and *C. coli* strains.** For the analysis of L3, sequences were obtained from the NCBI database using Blastp with the MOMP encoding sequence of *C. jejuni* KC40 as a query. The analysis of L6, was based on *porA* sequences in the MLSTdb database.

#### Abbreviations

BSA: bovine serum albumin; CDR: complementarity-determining region; His: histidine; MST: microscale thermophoresis; Nb: nanobody; NB2: Nutrient Broth Nr.2; PBS: phosphate-buffered saline; PVDF: polyvinylidene difluoride.

#### Competing interests

The authors declare that they have no competing interests.

#### Authors' contributions

HDG, JPH, FP, FH and AM conceived the study. JE and GGH immunized the alpaca and isolated *Campylobacter* specific nanobodies. CV purified the anti-*Campylobacter* nanobodies and selected those with broad specificity. IDdO and CV identified the antigen of the nanobodies and CV further characterised the interactions between the nanobodies and the MOMP. DV performed the LC-MS experiments. KM helped with the MST experiments and the analysis of the obtained results. CV, HDG and JPH interpreted the results and CV wrote the article. All authors read and approved the final manuscript.

#### Acknowledgements

We thank Dr. Delphine Martiny (Department of Microbiology, Iris-lab Brussels) for providing us with human *C. jejuni* strains and Dr. Marc Heyndrickx (the Institute for Agricultural and Fisheries Research, Technology and Food Science Unit—Food safety, ILVO) for providing *C. jejuni* and *C. coli* strains.

#### Funding

The research that yielded these results, was funded by the Belgian Federal Public Service of Health, Food Chain Safety and Environment through the Contract RF 13/6272 CampyNanoCure. KM is funded by an FWO postdoctoral fellowship.

#### Author details

<sup>1</sup> Structural Molecular Microbiology, VIB, Pleinlaan 2, 1050 Brussels, Belgium. <sup>2</sup> Structural Biology Brussels, Vrije Universiteit Brussel, Pleinlaan 2, 1050 Brussels, Belgium. <sup>3</sup> Genetische Virologie, Vrije Universiteit Brussel, Pleinlaan 2, 1050 Brussels, Belgium. <sup>4</sup> Department of Pathology, Bacteriology and Avian Diseases, Faculty of Veterinary Medicine, Ghent University, Salisburylaan 133, 9820 Merelbeke, Belgium. <sup>5</sup> VIB Nanobody Service Facility, Vrije Universiteit Brussel, Pleinlaan 2, 1050 Brussels, Belgium. <sup>6</sup> Faculty of Medicine and de Duve Institute, Université Catholique de Louvain, Avenue Hippocrate 74, 1200 Brussels, Belgium.

#### Publisher's Note

Springer Nature remains neutral with regard to jurisdictional claims in published maps and institutional affiliations.

Received: 25 July 2017 Accepted: 19 November 2017

Published online: 08 December 2017

#### References

- Ruiz-Palacios GM (2007) The health burden of *Campylobacter* infection and the impact of antimicrobial resistance: playing chicken. *Clin Infect Dis* 44:701–703
- Pires SM, Fischer-Walker CL, Lanata CF, Devleeschauwer B, Hall AJ, Kirk MD, Duarte ASR, Black RE, Angulo FJ (2015) Aetiology-specific estimates of the global and regional incidence and mortality of diarrhoeal diseases commonly transmitted through food. *PLoS One* 10:e0142927
- Waage AS, Vardund T, Lund V, Kapperud G (1999) Detection of small numbers of *Campylobacter jejuni* and *Campylobacter coli* cells in environmental water, sewage, and food samples by a seminested PCR assay. *Appl Environ Microbiol* 65:1636–1643
- Coker AO, Isokpehi RD, Thomas BN, Amisu KO, Larry OC (2002) Human *Campylobacteriosis* in developing countries. *Emerg Infect Dis* 8:237–244
- Moore JE, Corcoran D, Dooley JSG, Fanning S, Lucey B, Matsuda M, McDowell DA, Mégraud F, Millar BC, O'Mahony R, O'Riordan L, O'Rourke M, Rao JR, Rooney PJ, Sails A, Whyte P (2005) *Campylobacter*. *Vet Res* 36:351–382
- Young KT, Davis LM, Dirita VJ (2007) *Campylobacter jejuni*: molecular biology and pathogenesis. *Nat Rev Microbiol* 5:665–679
- Hahn AF (1998) Guillain-Barré syndrome. *Lancet* 352:635–641
- Nachamkin I, Allos BM, Ho T (1998) *Campylobacter* species and Guillain-Barré syndrome. *Clin Microbiol Rev* 11:555–567
- Horrocks SM, Anderson RC, Nisbet DJ, Ricke SC (2009) Incidence and ecology of *Campylobacter jejuni* and *coli* in animals. *Anaerobe* 15:18–25
- Corry JE, Atabay HI (2001) Poultry as a source of *Campylobacter* and related organisms. *Symp Ser Soc Appl Microbiol* 90:965–1145
- Thibodeau A, Fravallo P, Yergeau É, Arsénault J, Lahaye L, Letellier A (2015) Chicken caecal microbiome modifications induced by *Campylobacter jejuni* colonization and by a non-antibiotic feed additive. *PLoS One* 10:e0131978
- Beery JT, Hugdahl MB, Doyle MP (1988) Colonization of gastrointestinal tracts of chicks by *Campylobacter jejuni*. *Appl Environ Microbiol* 54:2365–2370
- EFSA (2010) Scientific report of EFSA: analysis of the baseline survey on the prevalence of *Campylobacter* in broiler batches and of *Campylobacter* and *Salmonella* on broiler carcasses in the EU, 2008. *EFSA J* 8:1503
- Herman L, Heyndrickx M, Grijspeerdt K, Vandekerchove D, Rollier I, De Zutter L (2003) Routes for *Campylobacter* contamination of poultry meat :

- epidemiological study from hatchery to slaughterhouse. *Epidemiol Infect* 131:1169–1180
15. Hermans D, Pasmans F, Messens W, Martel A, Van Immerseel F, Rasschaert G, Heyndrickx M, Van Deun K, Haesebrouck F (2012) Poultry as a host for the zoonotic pathogen *Campylobacter jejuni*. *Vector Borne Zoonotic Dis* 12:89–98
  16. Messens W, Hartnett E, Gellynck X, Viaene J, Halet D, Herman L, Grijspeerd K (2007) Quantitative risk assessment of human campylobacteriosis through the consumption of chicken meat in Belgium. In: XVIII European symposium on the quality of poultry meat and XII European symposium on the quality of eggs and egg products. 167–168
  17. Newell DG, Elvers KT, Dopfer D, Hansson I, Jones P, James S, Gittins J, Stern NJ, Davies R, Connerton I, Pearson D, Salvat G, Allen VM (2011) Biosecurity-based interventions and strategies to reduce *Campylobacter* spp. on poultry farms. *Appl Environ Microbiol* 77:8605–8614
  18. Lin J (2009) Novel approaches for *Campylobacter* control in poultry. *Foodborne Pathog Dis* 6:755–765
  19. Wagenaar JA, Mevius DJ, Havelaar AH (2006) *Campylobacter* in primary animal production and control strategies to reduce the burden of human campylobacteriosis. *Rev Sci Tech* 25:581–594
  20. Moore JE, Barton MD, Blair IS, Corcoran D, Dooley JSG, Fanning S, Kempf I, Lastovica AJ, Lowery CJ, Matsuda M, McDowell DA, McMahon A, Millar BC, Rao JR, Rooney PJ, Seal BS, Snelling WJ, Tolba O (2006) The epidemiology of antibiotic resistance in *Campylobacter*. *Microbes Infect* 8:1955–1966
  21. Phillips I, Casewell M, Cox T, De Groot B, Friis C, Jones R, Nightingale C, Preston R, Waddell J (2004) Does the use of antibiotics in food animals pose a risk to human health? A critical review of published data. *J Antimicrob Chemother* 53:28–52
  22. Bratz K, Gözl G, Janczyk P, Nöckler K, Alter T (2015) Analysis of in vitro and in vivo effects of probiotics against *Campylobacter* spp. *Berl Munch Tierarztl Wochenschr* 128:155–162
  23. Hermans D, Martel A, Van Deun K, Verlinden M, Van Immerseel F, Garmyn A, Messens W, Heyndrickx M, Haesebrouck F, Pasmans F (2010) Intestinal mucus protects *Campylobacter jejuni* in the ceca of colonized broiler chickens against the bactericidal effects of medium-chain fatty acids. *Poult Sci* 89:1144–1155
  24. Hermans D, Van Deun K, Messens W, Martel A, Van Immerseel F, Haesebrouck F, Rasschaert G, Heyndrickx M, Pasmans F (2011) *Campylobacter* control in poultry by current intervention measures ineffective: urgent need for intensified fundamental research. *Vet Microbiol* 152:219–228
  25. Wagenaar JA, Van Bergen MAP, Mueller MA, Wassenaar TM, Carlton RM (2005) Phage therapy reduces *Campylobacter jejuni* colonization in broilers. *Vet Microbiol* 109:275–283
  26. Line JE, Svetoch EA, Eruslanov BV, Perelygin VV, Mitsevich EV, Mitsevich IP, Levchuk VP, Svetoch OE, Seal BS, Siragusa GR, Stern NJ (2008) Isolation and purification of enterocin E-760 with broad antimicrobial activity against gram-positive and gram-negative bacteria. *Antimicrob Agents Chemother* 52:1094–1100
  27. Sahin O, Zhang Q, Meitzler JC, Harr BS, Morishita TY, Mohan R (2001) Prevalence, antigenic specificity, and bactericidal activity of poultry anti-*Campylobacter* maternal antibodies. *Appl Environ Microbiol* 67:3951–3957
  28. Sahin O, Luo N, Huang S, Zhang Q (2003) Effect of *Campylobacter*-specific maternal antibodies on *Campylobacter jejuni* colonization in young chickens. *Appl Environ Microbiol* 69:5372–5379
  29. Tsubokura K, Berndtson E, Bogstedt A, Kaijser B, Kim M, Ozeki M (1997) Oral administration of antibodies as prophylaxis and therapy in *Campylobacter jejuni*-infected chickens. *Clin Exp Immunol* 108:451–455
  30. Hermans D, Van Steendam K, Verbrugge E, Verlinden M, Martel A, Selwiorstow T, Heyndrickx M, De Zutter L, Deforce D, Pasmans F (2014) Passive immunization to reduce *Campylobacter jejuni* colonization and transmission in broiler chickens. *Vet Res* 45:27
  31. Hamers-Casterman C, Atarhouch T, Muyldermans S, Robinson G, Hamers C, Bajjana S, Bendahman N, Hamers R (1993) Naturally occurring antibodies devoid of light chains. *Nature* 363:446–448
  32. Harmsen MM, De Haard HJ (2007) Properties, production, and applications of camelid single-domain antibody fragments. *Appl Microbiol Biotechnol* 77:13–22
  33. Muyldermans S, Baral TN, Retamozzo VC, De Baetselier P, De Genst E, Kinne J, Leonhardt H, Magez S, Nguyen VK, Revets H, Rothbauer U, Stijlemans B, Tillib S, Wernery U, Wyns L, Hassanzadeh-Ghassabeh G, Saerens D (2009) Camelid immunoglobulins and nanobody technology. *Vet Immunol Immunopathol* 128:178–183
  34. Rubinchik S, Seddon A, Karlyshev AV (2012) Molecular mechanisms and biological role of *Campylobacter jejuni* attachment to host cells. *Eur J Microbiol Immunol (Bp)* 2:32–40
  35. Al-Adwani SR, Crespo R, Shah DH (2013) Production and evaluation of chicken egg-yolk-derived antibodies against *Campylobacter jejuni* colonization-associated proteins. *Foodborne Pathog Dis* 10:624–631
  36. Mahdavi J, Pirincioğlu N, Oldfield NJ, Carlsohn E, Stoof J, Aslam A, Self T, Cawthraw SA, Petrovska L, Colborne N, Sihlbom C, Borén T, Wooldridge KG, AlaAldeen DAA (2014) A novel O-linked glycan modulates *Campylobacter jejuni* major outer membrane protein-mediated adhesion to human histo-blood group antigens and chicken colonization. *Open Biol* 4:130202
  37. Wu Z, Periaswamy B, Sahin O, Yaeger M, Plummer P, Zhai W, Shen Z, Dai L, Chen SL, Zhang Q (2016) Point mutations in the major outer membrane protein drive hypervirulence of a rapidly expanding clone of *Campylobacter jejuni*. *Proc Natl Acad Sci U S A* 113:10690–10695
  38. Dé E, Jullien M, Labesse G, Pagès JM, Molle G, Bolla JM (2000) MOMP (major outer membrane protein) of *Campylobacter jejuni*; a versatile pore-forming protein. *FEBS Lett* 469:93–97
  39. Ferrara LGM, Wallat GD, Moynié L, Dhanasekar NN, Aliouane S, Acosta-Gutiérrez S, Pagès JM, Bolla JM, Winterhalter M, Ceccarelli M, Naismith JH (2016) MOMP from *Campylobacter jejuni* is a trimer of 18-stranded  $\beta$ -barrel monomers with a  $\text{Ca}^{2+}$  ion bound at the constriction zone. *J Mol Biol* 428:4528–4543
  40. Pardon E, Laeremans T, Triest S, Rasmussen SGF, Wohlkőning A, Ruf A, Muyldermans S, Hol WGJ, Kobilka BK, Steyaert J (2014) A general protocol for the generation of nanobodies for structural biology. *Nat Protoc* 9:674–693
  41. Arbabi Ghahroudi M, Desmyter A, Wyns L, Hamers R, Muyldermans S (1997) Selection and identification of single domain antibody fragments from camel heavy-chain antibodies. *FEBS Lett* 414:521–526
  42. Conrath KE, Lauwereys M, Galleni M, Matagne A, Frère JM, Kinne J, Wyns L, Muyldermans S (2001)  $\beta$ -Lactamase inhibitors derived from single-domain antibody fragments elicited in the *Camelidae*. *Antimicrob Agents Chemother* 45:2807–2812
  43. Dagert M, Ehrlich SD (1979) Prolonged incubation in calcium chloride improves the competence of *Escherichia coli* cells. *Gene* 6:23–38
  44. Hobb RI, Fields JA, Burns CM, Thompson SA (2009) Evaluation of procedures for outer membrane isolation from *Campylobacter jejuni*. *Microbiology* 155:979–988
  45. Arts IS, Vertommen D, Baldin F, Laloux G, Collet JF (2016) Comprehensively characterizing the thioredoxin interactome in vivo highlights the central role played by this ubiquitous oxidoreductase in redox control. *Mol Cell Proteom* 15:2125–2140
  46. Shang X, Marchioni F, Sipes N, Evelyn CR, Jerabek-Willemsen M, Duhr S, Seibel W, Wortman M, Zheng Y (2012) Rational design of small molecule inhibitors targeting RhoA subfamily Rho GTPases. *Chem Biol* 19:699–710
  47. Zhang Q, Meitzler JC, Huang S, Morishita T (2000) Sequence polymorphism, predicted secondary structures, and surface-exposed conformational epitopes of *Campylobacter* major outer membrane protein. *Infect Immun* 68:5679–5689
  48. Moonens K, Van Den Broeck I, Okello E, Pardon E, De Kerpel M, Remaut H, De Greve H (2015) Structural insight in the inhibition of adherence of F4 fimbriae producing enterotoxigenic *Escherichia coli* by llama single domain antibodies. *Vet Res* 46:14
  49. Virdi V, Coddens A, De Buck S, Millet S, Goddeeris BM, Cox E, De Greve H, Depicker A (2013) Orally fed seeds producing designer IgAs protect weaned piglets against enterotoxigenic *Escherichia coli* infection. *Proc Natl Acad Sci U S A* 110:11809–11814
  50. Rivoal K, Ragimbeau C, Salvat G, Collin P, Ermel G (2005) Genomic diversity of *Campylobacter coli* and *Campylobacter jejuni* isolates recovered from free-range broiler farms and comparison with isolates of various origins. *Appl Environ Microbiol* 71:6216–6227
  51. Najdenski H, Heyndrickx M, Herman L, Messens W (2008) Fla-DGGE analysis of *Campylobacter jejuni* and *Campylobacter coli* in cecal samples of broilers without cultivation. *Vet Microbiol* 127:196–202

52. Cody AJ, Maiden MJC, Dingle KE (2009) Genetic diversity and stability of the *porA* allele as a genetic marker in human *Campylobacter* infection. *Microbiology* 155:4145–4154
53. *Campylobacter* Multilocus Sequence Typing website. <https://pubmlst.org/campylobacter/>. Accessed 23 Oct 2017
54. National Center for Biotechnology Information. <https://blast.ncbi.nlm.nih.gov/Blast.cgi?PAGE=Proteins>. Accessed 23 Oct 2017
55. Höök H, Fattah MA, Ericsson H, Vågsholm I, Danielsson-Tham ML (2005) Genotype dynamics of *Campylobacter jejuni* in a broiler flock. *Vet Microbiol* 106:109–117
56. Kudirkiene E, Malakauskas M, Malakauskas A, Bojesen AM, Olsen JE (2010) Demonstration of persistent strains of *Campylobacter jejuni* within broiler farms over a 1-year period in Lithuania. *J Appl Microbiol* 108:868–877
57. Huang S, Sahin O, Zhang Q (2007) Infection-induced antibodies against the major outer membrane protein of *Campylobacter jejuni* mainly recognize conformational epitopes. *FEMS Microbiol Lett* 272:137–143
58. Islam A, Raghupathy R, Albert MJ (2010) Recombinant PorA, the major outer membrane protein of *Campylobacter jejuni*, provides heterologous protection in an adult mouse intestinal colonization model. *Clin Vaccine Immunol* 17:1666–1671
59. Saerens D, Ghassabeh GH, Muyldermans S (2008) Single-domain antibodies as building blocks for novel therapeutics. *Curr Opin Pharmacol* 8:600–608
60. Hultberg A, Tremblay DM, de Haard H, Verrips T, Moineau S, Hammarström L, Marcotte H (2007) Lactobacilli expressing llama VHH fragments neutralise *Lactococcus* phages. *BMC Biotechnol* 7:58
61. Moor K, Diard M, Sellin ME, Felmy B, Wotzka SY, Toska A, Bakkeren E, Arnoldini M, Bansept F, Dal Co A, Völler T, Minola A, Fernandez-Rodriguez B, Agatic G, Barbieri S, Piccoli L, Casiraghi C, Corti D, Lanzavecchia A, Regoes RR, Loverdo C, Stocker R, Brumley DR, Hardt WD, Slack E (2017) High-avidity IgA protects the intestine by enchaining growing bacteria. *Nature* 544:498–502
62. Roche AM, Richard AL, Rahkola JT, Janoff EN, Weiser JN (2015) Antibody blocks acquisition of bacterial colonization through agglutination. *Mucosal Immunol* 8:176–185
63. Shoaf-Sweeney KD, Larson CL, Tang X, Konkel ME (2008) Identification of *Campylobacter jejuni* proteins recognized by maternal antibodies of chickens. *Appl Environ Microbiol* 74:6867–6875
64. Zimmermann J, Saalbach I, Jahn D, Giersberg M, Haehnel S, Wedel J, Macek J, Zoufal K, Glünder G, Falkenburg D, Kipriyanov SM (2009) Antibody expressing pea seeds as fodder for prevention of gastrointestinal parasitic infections in chickens. *BMC Biotechnol* 9:79
65. Riazi A, Strong PCR, Coleman R, Chen W, Hiram T, van Faassen H, Henry M, Logan SM, Szymanski CM, MacKenzie R, Ghahoudi MA (2013) Pentavalent single-domain antibodies reduce *Campylobacter jejuni* motility and colonization in chickens. *PLoS One* 8:e83928
66. De Meyer T, Muyldermans S, Depicker A (2014) Nanobody-based products as research and diagnostic tools. *Trends Biotechnol* 32:263–270
67. Deckers N, Saerens D, Kanobana K, Conrath K, Wernery U, Vercruyssen J, Muyldermans S, Dorny P (2009) Nanobodies, a promising tool for species-specific diagnosis of *Taenia solium* cysticercosis. *Int J Parasitol* 39:625–633
68. Sambrook J, Fritsch EF, Maniatis T (1989) *Molecular cloning: a laboratory manual*. Cold Spring Harbor Laboratory Press, New York
69. Meselson M, Yuan R (1968) DNA restriction enzyme from *E. coli*. *Nature* 217:1110–1114
70. Zell R, Fritz HJ (1987) DNA mismatch-repair in *Escherichia coli* counteracting the hydrolytic deamination of 5-methyl-cytosine residues. *EMBO J* 6:1809–1815

Submit your next manuscript to BioMed Central and we will help you at every step:

- We accept pre-submission inquiries
- Our selector tool helps you to find the most relevant journal
- We provide round the clock customer support
- Convenient online submission
- Thorough peer review
- Inclusion in PubMed and all major indexing services
- Maximum visibility for your research

Submit your manuscript at  
[www.biomedcentral.com/submit](http://www.biomedcentral.com/submit)

