

ORIGINAL RESEARCH

Open Access

Paclitaxel improved anti-L1CAM lutetium-177 radioimmunotherapy in an ovarian cancer xenograft model

Dennis Lindenblatt¹, Eliane Fischer¹, Susan Cohrs¹, Roger Schibli^{1,2} and Jürgen Grünberg^{1*}

Abstract

Background: Today's standard treatment of advanced-stage ovarian cancer, including surgery followed by a paclitaxel-platinum-based chemotherapy, is limited in efficacy. Recently, we could show that radioimmunotherapy (RIT) with ¹⁷⁷Lu-labelled anti-L1 cell adhesion molecule (L1CAM) monoclonal antibody chCE7 is effective in ovarian cancer therapy. We investigated if the efficacy of anti-L1CAM RIT can be further improved by its combination with paclitaxel (PTX).

Methods: *In vitro* cell viability and cell cycle arrest of human ovarian cancer cells were assessed upon different treatment conditions. For therapy studies, nude mice ($n = 8$) were injected subcutaneously with IGROV1 human ovarian carcinoma cells and received a single dose of 6 MBq ¹⁷⁷Lu-DOTA-chCE7 alone or in combination with 600 µg PTX (31.6 mg/kg). Tumour growth delay and survival were determined. To investigate whether PTX can influence the tumour uptake of the radioimmunoconjugates (RICs), a biodistribution study ($n = 4$) and SPECT/CT images were acquired 120 h post injections of 2 MBq ¹⁷⁷Lu-DOTA-chCE7 alone or in combination with 600 µg PTX.

Results: Lu-DOTA-chCE7 in combination with PTX revealed a significantly decreased cell viability of ovarian carcinoma cells *in vitro* and was effective in a synergistic manner (combination index < 1). PTX increased the RIT efficacy by arresting cells in the radiosensitive G2/M phase of the cell cycle 24 h post treatment start. *In vivo* combination therapy including ¹⁷⁷Lu-DOTA-chCE7 and PTX resulted in a significantly prolonged overall survival (55 days vs. 18 days/PTX and 29 days/RIT), without weight loss and/or signs of toxicity. Biodistribution studies revealed no significant difference in tumour uptakes of ¹⁷⁷Lu-DOTA-chCE7 72 h post injection regardless of an additional PTX administration.

Conclusions: Combination of anti-L1CAM ¹⁷⁷Lu-RIT with PTX is a more effective therapy resulting in a prolonged overall survival of human ovarian carcinoma-bearing nude mice compared with either monotherapy. The combination is promising for future clinical applications.

Keywords: ¹⁷⁷Lu-radioimmunotherapy; Paclitaxel; Combination therapy; Ovarian carcinoma; L1CAM; mAb chCE7

Background

With an estimate of 21,980 new cases in the US alone, ovarian carcinoma (OC) represents the fifth most common cause of cancer deaths in female population in 2014 [1]. Late diagnosis due to missing clinical symptoms or diagnostic markers results in poor prognosis for patients that have often developed late-stage ovarian cancer,

including widespread metastases at the time of diagnosis [2,3]. Today's front-line therapies, including surgery followed by a paclitaxel-platinum treatment, fail to cure late-stage OC. However, the 10-year survival rate is 40% to 50% with stage-related survival of 73% to 92% for stage I, 45% to 55% for stage II, 21% for stage III and less than 6% for stage IV patients [3,4]. Therefore, alternative treatment strategies are subject of intense research.

Besides conventional chemotherapy, numerous monoclonal antibodies (mAbs) have been developed for targeted therapies for the future management of ovarian

* Correspondence: juergen.gruenberg@psi.ch

¹Center for Radiopharmaceutical Sciences ETH-PSI-USZ, Paul Scherrer Institute, 5232 Villigen PSI, Switzerland

Full list of author information is available at the end of the article

cancer [5]. Although preclinical studies showed promising results, clinical administration of mAbs as monotherapies or when combined with other treatment modalities showed only limited clinical efficacy in OC patients [6-9]. The reasons for restricted mAb activities are not obvious. However, studies will benefit from larger trials and appropriate patient selections to better define the effectiveness of mAb-based therapies.

In order to improve the efficacy of mAb-based therapies, radioimmunotherapy (RIT) is considered to be an attractive strategy for the treatment of OC [10]. While RIT has only a limited efficacy treating larger solid tumours due to insufficient dose delivery, it is a suitable therapy option for small-volume disseminated tumour nodules that frequently occur after surgery of the primary tumours of the ovary [11,12]. However, only one ^{90}Y -labelled radioimmunconjugate (^{90}Y -muHMFG1) for the treatment of OC has advanced to a clinical phase III trial. Unfortunately, no improvement in extending survival or time to relapse could be achieved in particular due to a missing dosimetric approach. Thereby, retrospective analysis revealed that tumour absorbed doses had been too low [13,14].

The use of the high-energy-emitting radionuclide ^{90}Y and the application of a non-internalising antibody (anti-MUC1) are considered further reasons for the limited clinical outcome.

The L1 cell adhesion molecule (L1CAM) was originally described as a protein of the nervous system and is highly expressed on numerous tumours such as neuroblastoma [15], colon carcinoma [16], melanoma [17], pancreatic adenocarcinoma [18] and ovarian carcinoma [19]. Its expression in cancer is correlated with increased cell proliferation, migration, angiogenesis as well as apoptosis protection [15,19,20]. Therefore, L1CAM is a promising target for novel therapies [21-24].

chCE7 is a chimeric monoclonal antibody that is directed against the L1CAM cell surface antigen. mAb chCE7 binds with high affinity ($K_D \approx 10^{-10}$ mol/l) near an RGD sequence in the sixth IgG-like domain of L1CAM, inhibiting tumour cell growth *in vitro* and *in vivo* [15,25,26]. The antibody-antigen complex internalises into the targeted cell through endocytosis. We demonstrated that a ^{177}Lu -labelled variant of mAb chCE7 showed high efficacy in a xenograft model of disseminated ovarian carcinoma [25].

Preclinical studies have demonstrated that combined treatments including RIT and radiosensitising taxanes such as paclitaxel (PTX) can be advantageous compared to monotherapies [27-29]. PTX belongs to the group of microtubule-stabilising agents and induces apoptosis and arrest of tumour cells in the radiosensitive G2/M phase of the cell cycle based on suppression of microtubule dynamics. Furthermore, it was shown that PTX

influences the tumour microenvironment, resulting in reoxygenation of the tumour potentially providing radiosensitising effects [30,31].

In this study, we investigated whether the efficacy of previously developed anti-L1CAM ^{177}Lu -RIT against ovarian carcinoma can be further increased by its combination with the radiosensitising taxane PTX.

Methods

Cell culture and antibody formats

IGROV1 human ovarian cancer cells were kindly provided by Dr. Cristina Müller (Center for Radiopharmaceutical Sciences, Paul Scherrer Institute) and analysed by STR profiling (DSMZ, Braunschweig, Germany). IGROV1 cells were maintained in a humidified atmosphere containing 5% CO_2 in RPMI 1640 medium at 37°C. The medium was supplemented with 10% fetal calf serum (FCS), 2 mM glutamine, 100 units/ml penicillin, 100 $\mu\text{g}/\text{ml}$ streptomycin and 0.25 $\mu\text{g}/\text{ml}$ fungizone (BioConcept, Allschwil, Switzerland). mAb chCE7 is a IgG1-subtype chimeric monoclonal antibody (human κ light chain and human γ 1 heavy chain). It was produced in HEK293 cells and purified from cell culture supernatant using a protein G-Sepharose column (GE Healthcare, Glattbrugg, Switzerland) as described by Grünberg et al. [32]. An unspecific isotype-matched IgG was used as a control for experiments.

Ligand substitution and antibody radiolabelling

Ligand substitution was performed as previously described by Fischer et al. [25]. For ligand conjugation, the molar excess of p-SCN-Bn-DOTA (Macrocyclics, Dallas, TX, USA) was adapted individually for each antibody to achieve similar DOTA ligands to mAb ratios. The reaction mixture was adjusted to pH 9 to 10 using a saturated Na_3PO_4 solution and was incubated for 16 h at 4°C. Excess ligands were removed and buffer was exchanged into 0.25 M $\text{CH}_3\text{COONH}_4$ (pH 5.5) using a NAP-5 column (GE Healthcare, Glattbrugg, Switzerland). Immunoconjugates were stored at -80°C.

The average number of coupled chelators per mAb was determined by mass spectrometry as previously described [25]. ^{177}Lu (ITG, Garching, Germany) was utilised for radiolabelling 1 to 3 days post calibration date. Briefly, a reaction mixture containing 250 to 900 μg of the immunoconjugates and 200 to 600 MBq ^{177}Lu was incubated in 0.25 M $\text{CH}_3\text{COONH}_4$ buffer (pH 5.5) for 1 h at 37°C.

After incubation, EDTA was added to a final concentration of 5 mM for 5 min in order to complex free lutetium. Radioimmunoconjugates (RICs) were purified via FPLC size exclusion chromatography on a Superose 12 column (GE Healthcare, Glattbrugg, Switzerland) in phosphate-buffered saline (PBS) with a flow rate of 0.5 ml/min. Both radiolabelled chCE7 and unspecific

control IgG eluted at a retention time of 21 min. In order to test the stability of ^{177}Lu -labelled antibodies, RICs were incubated in human plasma at 37°C and analysed by FPLC size exclusion chromatography on a TSKgel G3000Wxl column (Tosoh Bioscience, Stuttgart, Germany). The flow rate of the mobile phase (0.3 M NaCl, 0.05 M Na_2HPO_4 , pH 6.2) was set to 1 ml/min (Additional file 1: Figure S1).

FACS cell cycle analysis upon PTX treatment

For cell cycle analysis, IGROV1 cells were seeded in a six-well plate (0.75×10^5 /well) and incubated for 24 h. The medium was removed and cells were incubated with the accordant $\frac{1}{2}$ half-maximal inhibitory concentration ($\frac{1}{2} \text{IC}_{50}$, 5 nM) or IC_{50} (10 nM) of PTX for 24 h at 37°C. PTX $\frac{1}{2} \text{IC}_{50}$ was calculated based on the experimentally determined IC_{50} value using a 3-(4,5-dimethylthiazol-2-yl)-2,5-diphenyltetrazolium bromide (MTT) cell viability assay (Additional file 1: Figure S2). Afterwards, cells were washed with PBS, detached and fixed in 70% ethanol (24 h, -20°C). After additional washing with PBS, cells were incubated with 0.5 µg/ml propidium iodide (PI) solution (Sigma-Aldrich, Buchs, Switzerland) for 40 min at room temperature (RT) and analysed by flow cytometry. All results were evaluated with FlowJo software (Tree Star, Ashland, OR, USA, version 10).

In vitro cell viability assay

In order to determine the ^{177}Lu -DOTA-chCE7 concentrations necessary to reduce cell viability to 50% (IC_{50}), IGROV1 cells were seeded in a 96-well plate and incubated for 24 h at 37°C. After adhesion, cells receiving combination treatment were incubated with the accordant $\frac{1}{2} \text{IC}_{50}$ (5 nM) or IC_{50} (10 nM) PTX concentrations for 24 h at 37°C in order to maximise the amount of cells being arrested in the G2/M phase of the cell cycle. Cells were then washed with PBS and treated with 100 µl (0.02 to 42 MBq/ml) ^{177}Lu -DOTA-chCE7 for 4 h on ice. Subsequently, cells were washed and incubated in culture medium at 37°C. Cell viability was determined when 20 µl of filtered MTT solution (5 mg/ml, Sigma-Aldrich) was added to each well followed by incubation for 2 h protected from light. The medium was removed and the formed formazan crystals were dissolved in 200 µl dimethyl sulfoxide (DMSO). The absorbance (OD) was determined at a wavelength of 560 nm in a microplate reader (Victor X3, PerkinElmer, Waltham, MA, USA). Results are expressed as percentage of viable cells compared to the control.

In vivo therapy studies

All animal experiments were approved by the cantonal committee on animal experiments and permitted by the responsible cantonal authorities (permission numbers

75528 and 75535). The studies were conducted in compliance with the Swiss laws on animal protection. For survival studies, groups of eight female CD1 nude mice (Charles River, Sulzfeld, Germany, 5 weeks old) were injected subcutaneously (s.c.) with 7×10^6 IGROV1 cells (100 µl, in sterile PBS) into the right flank. Eight days post tumour cell inoculation, therapy experiments started (mean tumour volume = $60 \pm 30 \text{ mm}^3$). Mice were injected with a) 6 MBq (50% maximum tolerated activity (MTA), 25 µg, 100 µl) ^{177}Lu -DOTA-chCE7, b) 6 MBq ^{177}Lu -DOTA-control IgG (25 µg, 100 µl) or c) PBS into the tail vein. MTA of ^{177}Lu -DOTA-chCE7 was determined elsewhere [33]. Twenty-four hours later, groups that should receive the combination therapy or PTX alone were injected intraperitoneally (i.p.) with 600 µg PTX (31.6 mg/kg, clinical formulation; Taxol, Bristol-Myers Squibb, Zürich, Switzerland, 1:3 dilution with PBS; 300 µl). Since the maximum tumour uptake of ^{177}Lu -DOTA-chCE7 is reached at 48 to 72 h after injection of RIC (i.v.), PTX was administered 24 h post RIT in order to synchronise the maximum tumour uptake of the radiolabelled mAb and PTX-induced cell cycle arrest in the G2/M phase. Concentration was chosen based on previous experiments determining 600 µg/mouse as a reliable dosage for PTX administration in combination with RIT [34,35].

Animals were examined two to three times a week and weighed, and tumour volumes were measured with $V = (A \times B^2)/2$, where A is the smaller diameter and B the wider diameter of the tumour. The relative tumour volume (RTV) was calculated with V_x/V_0 (V_x = tumour volume at given time, V_0 = tumour volume at therapy starting point). Relative body weight (RBW) was measured with W_x/W_0 (W_x = body weight at given time, W_0 = body weight at therapy starting point). Animals were euthanised if the tumour volume exceeded 1,000 mm^3 or observed weight loss was greater than 20%. In order to avoid bias in the test results, treatment information was blinded to the tester during the course of the therapy.

Biodistribution studies

For biodistribution studies, groups of four female CD1 nude mice (Charles River, Sulzfeld, Germany) were injected s.c. with 7×10^6 IGROV1 cells at the age of 5 weeks. Fourteen days post tumour cell inoculation, 0.85 MBq (25 µg, 100 µl) ^{177}Lu -DOTA-chCE7 was injected into the tail vein. Twenty-four hours later, mice received either 600 µg PTX (31.6 mg/kg, clinical formulation; Taxol, Bristol-Myers Squibb, Zürich, Switzerland, 1:3 dilution with PBS; 300 µl) i.p. or 300 µl PBS i.p. Control mice were injected with 0.85 MBq ^{177}Lu -DOTA-control IgG (25 µg, 100 µl). Mice were sacrificed 72 h post RIC administration, and organs as well as tumours were weighed and counted for radioactivity in a gamma

counter (COBRA II, Packard Bioscience, Meriden, CT, USA). Results are expressed as percentage of the injected activity per gram of tissue weight (%IA/g).

SPECT/CT imaging studies

SPECT/CT imaging studies were performed in a NanoSPECT/CT system (Bioscan, Washington, DC, USA). ^{177}Lu -DOTA-chCE7 (6 MBq, 25 μg , 100 μl) was injected into the tail vein of tumour-bearing nude mice 24 h prior to i.p. administration of 600 μg (31.6 mg/kg) PTX or PBS. Control mice received ^{177}Lu -DOTA-control IgG. SPECT/CT scans were performed 96 h (^{177}Lu -DOTA-control IgG) and 120 h (^{177}Lu -DOTA-chCE7, ^{177}Lu -DOTA-chCE7 + PTX) after RIC administration. SPECT data were reconstructed by HighSPECT software (ver. 1.4.3049, Scivis). Reconstruction of CT data, fusion with SPECT data and analysis were performed by InVivoScope postprocessing software (ver. 1.44, Bioscan, Washington, DC, USA).

Statistical analysis

Statistical analysis of the survival experiment was performed via a log-rank test. Bonferroni correction was used to determine statistical significance for multiple comparisons. Significance was defined as $p < 0.0083$. Student's t test (unpaired, two-tailed) was used for comparison of tumour volumes and biodistribution experiments. Statistical significance was defined as $p < 0.05$. *In vitro* data was analysed via combination index calculations ($\text{CI} = (C_{A,x}/I_{c_{x,A}}) + (C_{B,x}/I_{c_{x,B}})$). Thereby, concentrations required to produce a given effect are determined for drug A ($I_{c_{x,A}}$) and drug B ($I_{c_{x,B}}$). $C_{A,x}$ and $C_{B,x}$ are the concentrations of A and B contained in combination that provide the same effect. Synergy is determined for $\text{CI} < 1$, additivity for $\text{CI} = 1$ and antagonism for $\text{CI} > 1$ [36].

Results

Ligand substitution and antibody radiolabelling

Mass spectroscopic analysis of the DOTA-to-mAb ratios for mAb chCE7 and the control IgG revealed that an average of 2.7 to 3.1 (chCE7) or 3.1 (control IgG) chelators were coupled to an intact antibody molecule. Specific activity obtained upon ^{177}Lu labelling was 240 to 600 MBq/mg protein. Immunoreactivity was proven by the Lindmo method (50% to 87%).

PTX treatment induces G2/M phase arrest

Figure 1 shows fluorescence-activated cell sorting (FACS) analysis histograms after IGROV1 cells have been treated with $\frac{1}{2}$ IC_{50} (5 nM) or IC_{50} (10 nM) PTX concentrations for 24 h. An increased amount of IGROV1 cells arrested in the G2/M phase of the cell cycle could be observed for cells treated with 10 nM PTX (46.5% \pm 3.4%, Figure 1b) compared to untreated control cells (25.2% \pm 7.3%, Figure 1a). Furthermore, an increased sub-G1 population (18.2% \pm 2.2%, Figure 1b) was detected during PTX treatment. Thereby, G0/G1 population decreased from 54.5% \pm 2.5% (untreated cells) to 15.7% \pm 1.2%. The treatment with 5 nM PTX resulted in 17.0% \pm 9.3% cells being arrested in the G2/M phase of the cell cycle accompanied by an increased sub-G1 population (25.4% \pm 4.8%, Figure 1c) compared to the control. The G0/G1 cell population decreased to 36.7% \pm 13.6% compared to the untreated cells.

In vitro cell growth inhibition upon ^{177}Lu -DOTA-chCE7 and paclitaxel treatments

In order to investigate whether PTX can sensitise IGROV1 cells towards subsequent ^{177}Lu -DOTA-chCE7 treatment, cell growth inhibition upon single or combined treatments was examined by MTT proliferation assays using previously determined IC_{50} (10.0 \pm 1.0 nM) and $\frac{1}{2}$ IC_{50} (5 nM) of PTX as a basis for combination treatments. One-half

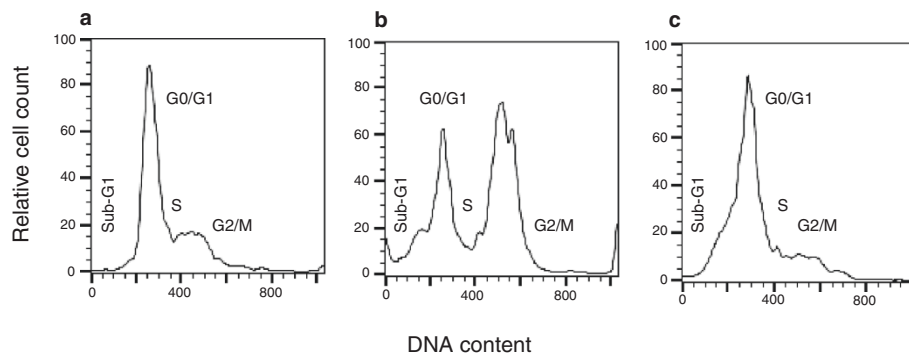
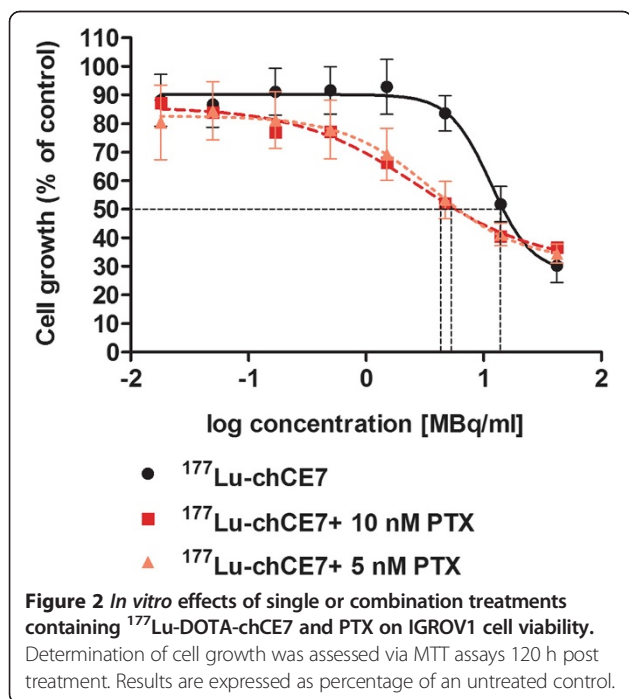


Figure 1 FACS analysis of PTX pre-treated IGROV1 cells. (a) Untreated control, (b) incubated with 10 nM PTX (IC_{50}) or (c) incubated with 5 nM PTX ($\frac{1}{2}$ IC_{50}) for 24 h at 37°C.

IC₅₀ was calculated based on the experimentally determined IC₅₀ (Additional file 1: Figure S2). Treatment of IGROV1 cells with ¹⁷⁷Lu-DOTA-chCE7 alone revealed an IC₅₀ of 11.9 ± 1.9 MBq/ml (Figure 2). Combined treatment including PTX and ¹⁷⁷Lu-DOTA-chCE7 resulted in decreased IC₅₀ values of 3.5 ± 1.3 MBq/ml (¹⁷⁷Lu-DOTA-chCE7 + 5 nM PTX) and 2.9 ± 1.2 MBq/ml (¹⁷⁷Lu-DOTA-chCE7 + 10 nM PTX). In order to determine synergistic or additive effects, combination index (CI) calculations as published by Zhao et al. were used [36]. For a cell growth inhibition of 50%, the additional application of PTX (½ IC₅₀) increases the cytotoxic effect of ¹⁷⁷Lu-DOTA-chCE7 in a synergistic manner (CI < 1). In order to provide additional information about the long-term colony-forming ability of IGROV1 cells after mono- (¹⁷⁷Lu-DOTA-chCE7) or combined (PTX + ¹⁷⁷Lu-DOTA-chCE7) treatments, colony assays were assessed. Results indicate that the cytotoxicity of ¹⁷⁷Lu-DOTA-chCE7 can be increased by the additional application of paclitaxel (½ IC₅₀) 24 h prior to RIT (Additional file 1: Figure S3). Thereby, IC₅₀ values decreased from 1.5 MBq/ml (¹⁷⁷Lu-DOTA-chCE7) to 0.75 MBq/ml for combined treatment (PTX + ¹⁷⁷Lu-DOTA-chCE7). Simultaneous administration or application of PTX 16 h after ¹⁷⁷Lu-DOTA-chCE7 did not increase the cytotoxicity effects of RIT necessary for 50% cell growth inhibition.

Combination of ¹⁷⁷Lu-DOTA-chCE7 and PTX results in prolonged survival of human ovarian carcinoma-bearing nude mice

To investigate whether a combined treatment of ¹⁷⁷Lu-DOTA-chCE7 and PTX results in delayed tumour growth



and prolonged survival compared to monotherapies, a therapy experiment was performed in nude mice. Xenografts were generated by s.c. injection of IGROV1 human ovarian carcinoma cells into female CD1 nude mice.

Eight days post implantation of tumour cells, mice received an i.v. injection of 6 MBq ¹⁷⁷Lu-DOTA-chCE7 (25 µg) followed by 600 µg PTX 24 h later. Control mice received either 6 MBq (25 µg) of a ¹⁷⁷Lu-labelled unspecific control IgG or PBS. Mice were monitored two to three times a week with end point criteria set as weight loss >20% or increased tumour volume >1,000 mm³. Average RTVs, average RBWs and Kaplan-Meier survival plots were recorded. Tumour growth curves were stopped at the exclusion day of the first mouse in each group. Untreated control mice showed a fast increase in tumour volume from the beginning of the therapy experiment, indicating an uninhibited tumour growth (Figure 3a). The group that received the combination therapy (¹⁷⁷Lu-DOTA-chCE7 + PTX) demonstrated the most pronounced delay in tumour growth. The mean RTV < 1 between days 4 and 18 post treatment start indicates tumour shrinkage. Complete tumour clearance or shrinkage below detection limits was observed in seven out of eight mice until day 13. During this time, a reduced tumour burden with a significant decrease in average RTV on day 13 was observable for mice treated with anti-L1CAM combination therapy compared to all other treatment groups (vs. ¹⁷⁷Lu-DOTA-chCE7: *p* < 0.05; vs. PTX: *p* < 0.05; vs. ¹⁷⁷Lu-DOTA-control IgG + PTX: *p* < 0.05). Additionally, no weight loss >20% or signs of distress could be observed at any time during the therapy experiment. Combination of ¹⁷⁷Lu-DOTA-chCE7 and PTX resulted in a significantly prolonged overall survival compared to mice that received only ¹⁷⁷Lu-RIT or PTX (vs. ¹⁷⁷Lu-DOTA-chCE7: *p* = 0.0013; vs. PTX: *p* = 0.0002; Figure 3b). Thereby, median survival was increased from 18 days (PTX) and 29 days (¹⁷⁷Lu-DOTA-chCE7) up to 55 days for the combination therapy. Additionally, a significantly prolonged survival could be shown for mice receiving anti-L1CAM combination therapy compared to untreated controls (PBS) and mice that received unspecific treatments (vs. PBS: *p* = 0.0001; vs. ¹⁷⁷Lu-DOTA-control IgG: *p* = 0.0001; vs. ¹⁷⁷Lu-DOTA-control IgG + PTX: *p* = 0.0002). No significant difference in overall survival could be observed between PTX monotherapy and the untreated control (*p* = 0.29).

The ¹⁷⁷Lu-RIT alone increased overall survival significantly compared to mice that received only PBS (*p* = 0.0017). A regular increase in mean RBW for mice that received the combination of ¹⁷⁷Lu-DOTA-chCE7 and PTX could be observed until day 37 post treatment start indicating no therapy-induced weight loss and/or signs of toxicity (Figure 3c). However, subsequent decrease in

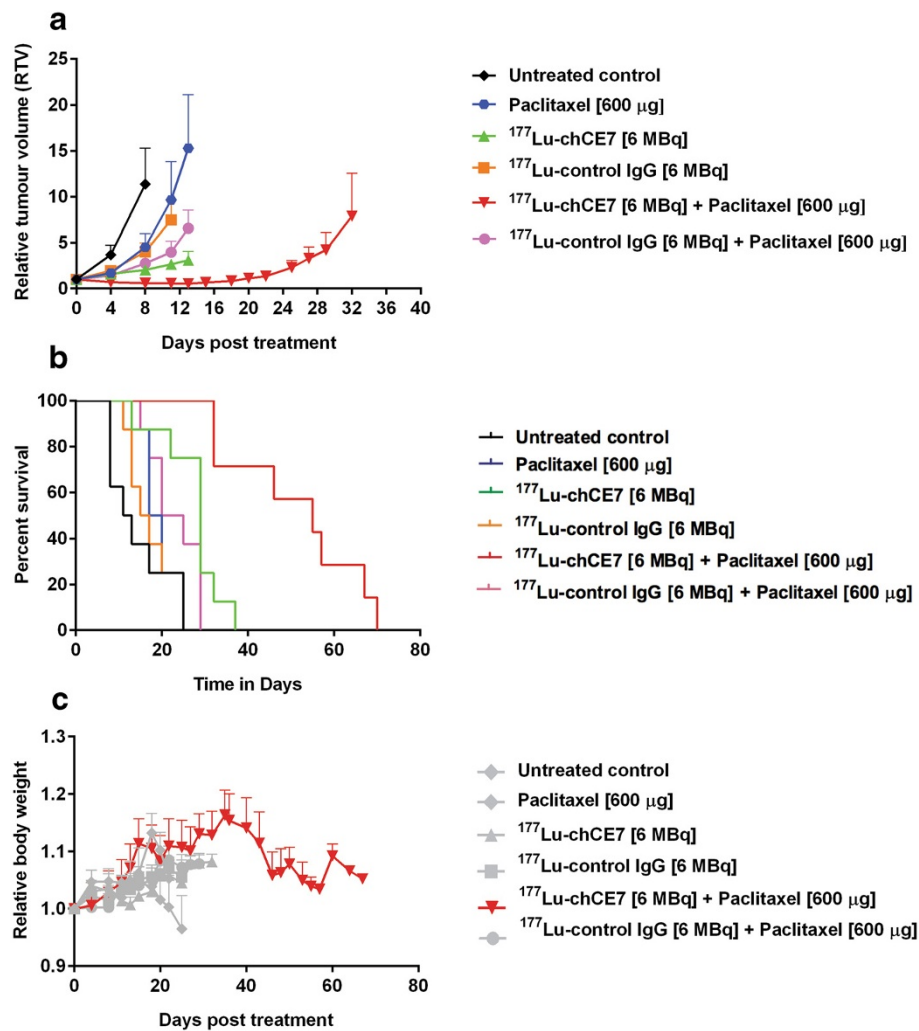


Figure 3 Therapeutic efficacy of anti-L1CAM RIT in combination with PTX. Tumour-bearing nude mice ($n=8$) received ¹⁷⁷Lu-DOTA-chCE7 (6 MBq, 50% MTA, i.v.) followed by PTX (600 µg, i.p.) 24 h later for combination therapies. Control mice received PBS, PTX or 6 MBq (25 µg) of ¹⁷⁷Lu-labelled unspecific control IgG with or without PTX. **(a)** Mean relative tumour volume \pm SD. Tumour growth curves were stopped when the first tumour in a treatment group reached 1,000 mm³. **(b)** Kaplan-Meier plots of the therapy experiment. **(c)** Development of body weight during therapy. Mean relative body weight \pm SD.

body weight correlates with reoccurring increased tumour burden.

Comparative biodistributions and SPECT/CT imaging post ¹⁷⁷Lu-DOTA-chCE7 and PTX administrations

Previously, Jang et al. [27] investigated the effect of PTX on the efficacy of ⁹⁰Y-labelled B3 mAb in Le^y antigen-positive A-431 human epidermoid carcinoma xenografts. It was demonstrated that PTX significantly increased the accumulation and penetration of mAb B3 into the tumour microenvironment compared to the control, supporting synergistic effects of the combined therapy. In order to investigate whether PTX treatment influences the biodistribution of ¹⁷⁷Lu-DOTA-chCE7, female CD1 nude mice ($n=4$) were injected i.v. with 0.85 MBq

¹⁷⁷Lu-DOTA-chCE7 14 days post s.c. implantation of IGROV1 tumour cells. Twenty-four hours post ¹⁷⁷Lu-DOTA-chCE7 administration, one group of mice additionally received 600 µg PTX (i.p.). Control mice ($n=5$) were injected with a non-binding ¹⁷⁷Lu-DOTA-control IgG with or without PTX treatment. Accumulated radioactivity in tumour tissue was high after 72 h ($49.6\% \pm 11.9\%$) for mice injected with ¹⁷⁷Lu-DOTA-chCE7 compared to reasonably low uptakes for all non-targeted organs and the blood pool (<9%; Table 1). RIC uptake of 45.3% ($\pm 8.6\%$) per gram tumour tissue could be reached in mice that received successive ¹⁷⁷Lu-DOTA-chCE7 and PTX administrations. Accumulated radioactivity in tumours did not differ significantly for both groups ($p=0.58$), implying that PTX has no effect on the tumour uptake of ¹⁷⁷Lu-DOTA-chCE7.

Table 1 Biodistribution of ^{177}Lu -DOTA-chCE7 and ^{177}Lu -DOTA-control IgG 72 h post RIC injection in nude mice bearing subcutaneous IGROV1 tumours (\pm PTX)

Organs	^{177}Lu -DOTA-chCE7	^{177}Lu -DOTA-chCE7 + PTX	^{177}Lu -DOTA-control IgG	^{177}Lu -DOTA-control IgG + PTX
Blood	8.9 \pm 2.8	6.9 \pm 3.5	17.12 \pm 3.6	13.3 \pm 8.5
Heart	3.9 \pm 0.8	3.3 \pm 1.4	5.7 \pm 2.9	3.9 \pm 1.7
Spleen	7.0 \pm 2.3	5.7 \pm 1.0	5.0 \pm 2.8	10.2 \pm 6.1
Kidney	2.8 \pm 0.3	2.4 \pm 0.6	5.4 \pm 1.9	4.6 \pm 1.8
Stomach	0.4 \pm 0.2	0.4 \pm 0.1	0.8 \pm 0.8	1.0 \pm 0.4
Intestine	0.8 \pm 0.2	0.7 \pm 0.3	1.1 \pm 0.3	0.4 \pm 0.5
Liver	5.3 \pm 1.8	5.7 \pm 0.3	5.7 \pm 2.5	6.7 \pm 1.2
Muscle	0.9 \pm 0.2	0.8 \pm 0.2	1.1 \pm 0.3	1.4 \pm 0.6
Bone	1.5 \pm 0.2	1.1 \pm 0.5	1.9 \pm 0.6	2.6 \pm 0.5
Tumour	49.6 \pm 11.9	45.3 \pm 8.6	7.2 \pm 2.3	9.1 \pm 3.1

Results shown in %IA/g \pm SD.

Similarly, PTX had no influence on the accumulation of ^{177}Lu -DOTA-chCE7 in all other organs and the blood pool. As expected, the tumour uptake of the ^{177}Lu -DOTA-control IgG was low regardless of a following PTX administration. For ^{177}Lu -DOTA-control IgG, we observed a longer retention time in the blood pool compared to ^{177}Lu -DOTA-chCE7. Very low radioactivity in the bones indicates maintained stability of the ^{177}Lu -DOTA complex after 72 h post injection. We further analysed the distribution of ^{177}Lu -DOTA-chCE7 in subcutaneous IGROV1 tumour-bearing nude mice at 120 h post RIC administration via SPECT/CT. Injection of ^{177}Lu -DOTA-chCE7 (Figure 4a) and combined administrations of ^{177}Lu -DOTA-chCE7 and PTX (Figure 4b) show similar high uptakes of the RICs in the tumours located at the right shoulder. In both cases, almost no remaining activity in other non-targeted organs could be observed, matching the low accumulation percentages obtained from biodistribution studies of the earlier time point (72 h). Additionally, SPECT/CT images indicate that ^{177}Lu -DOTA-chCE7 was equally distributed throughout the tumour regardless of a following PTX injection. Neither an uptake at the site of tumour implantation nor uptake in other organs could be detected 96 h post injection of ^{177}Lu -DOTA-control IgG (Figure 4c).

Discussion

We have previously demonstrated that anti-L1CAM RIT using the mAb chCE7 is effective against small disseminated ovarian tumour nodules in a preclinical setting [25,37]. In this study, we asked for the first time if the efficacy of L1CAM-targeted ovarian cancer RIT can be further improved by the introduction of PTX into the therapy scheme. Therefore, the efficacies of ^{177}Lu -DOTA-chCE7 and PTX monotherapies were compared to the combined treatment modality. We further

evaluated if PTX influences the tumour uptake of ^{177}Lu -DOTA-chCE7.

After adding PTX at IC_{50} to IGROV1 ovarian cancer cells, the number of cells being arrested in the radiosensitive G2/M phase of the cell cycle could be increased at 24 h after treatment start. In contrast, PTX at $\frac{1}{2} \text{IC}_{50}$ showed no increase in G2/M phase arrested cells compared to an untreated control, suggesting that the applied concentration was not sufficient to induce cell cycle arrest. Nevertheless, for both concentrations, the appearance of sub-G1 populations was demonstrated.

These results agree with previous observations that low PTX concentrations (<10 nM) induced an increased amount of apoptosis without evidence for existent G2/M arrest compared to a control. This effect might be caused by the fact that lower PTX concentrations (<10 nM) do not completely saturate PTX binding sites in a part of the cell population, which in turn leads to progression of the cell cycle, chromosomal instability and induction of apoptosis [38]. For intermediate PTX concentrations (≥ 10 nM), saturation of microtubule binding sites may be further increased, leading to G2/M arrest and apoptosis [38]. However, in both cases, ^{177}Lu -DOTA-chCE7 concentrations necessary to reduce cell viability to 50% of untreated controls could be reduced 3.2-fold by combination with low-dose PTX at $\frac{1}{2} \text{IC}_{50}$ or 4.3-fold when combined with IC_{50} PTX intermediate dosages. For 50% cell growth inhibition, combination index calculations revealed that monotherapies ($\frac{1}{2} \text{IC}_{50}$ PTX + ^{177}Lu -DOTA-chCE7) were combined in a synergistic manner.

Increased therapeutic efficacy of RIT upon combination with PTX has been previously shown by Jang et al. [27] when anti-Le^y ^{90}Y -labelled mAb B3 and PTX combination therapy resulted in a significantly prolonged survival of human epidermoid carcinoma-bearing mice. Milenic et al. [34] demonstrated an increased therapeutic efficacy when

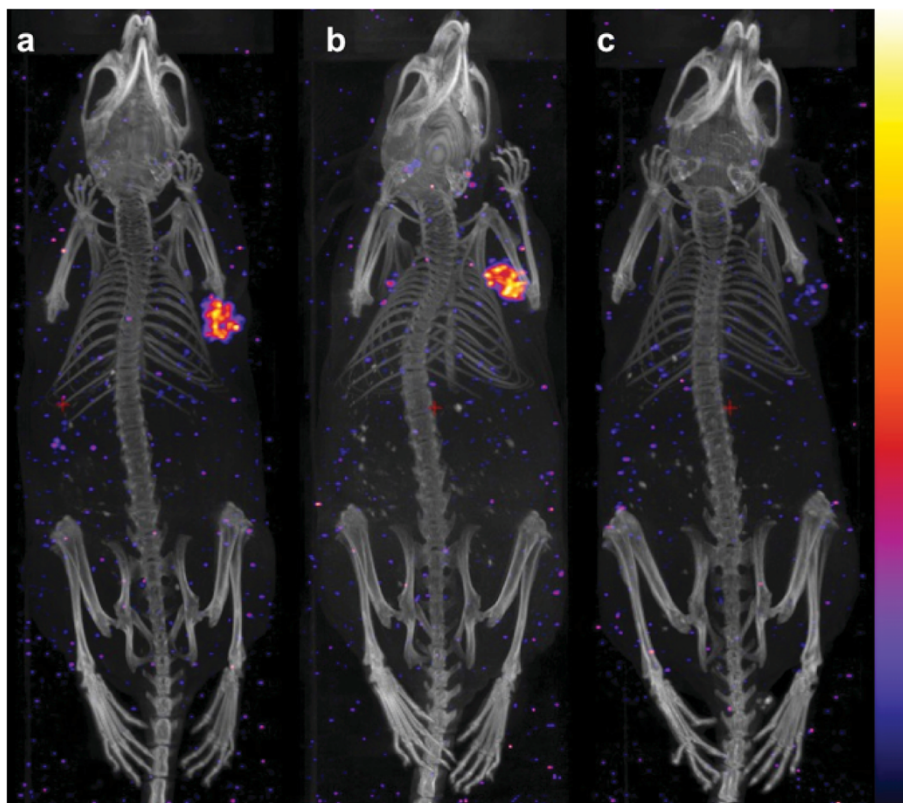


Figure 4 Whole-body SPECT/CT images of IGROV1 xenografts. CD1 nude mice were injected i.v. with 6 MBq of (a) ^{177}Lu -DOTA-chCE7 or (b) ^{177}Lu -DOTA-chCE7 and 600 μg PTX 24 h post RIC administration or (c) ^{177}Lu -DOTA-control IgG. Images were taken 120 h post RIC injection (control 96 h).

α -particle-targeted radiation therapy (^{213}Bi -trastuzumab) was combined with PTX in a human colon carcinoma tumour model. However, the radioisotope ^{177}Lu is a more suitable candidate for RIT against smaller tumours that frequently appear in ovarian cancer. ^{177}Lu shows an increased half-life of 6.7 days compared to ^{213}Bi (45 min), thereby matching the slow pharmacokinetics of IgGs when injected intravenously. Furthermore, an intravenous application of the RIC might have advantages in terms of targeting distant metastasis beyond the peritoneal cavity. Thereby, ^{177}Lu lower tissue penetration range (≈ 2 mm) is likely to be superior to ^{90}Y in the treatment of small disseminated ovarian cancer tumour nodules [25]. Our animal studies demonstrated that combined application of PTX and anti-L1CAM ^{177}Lu -DOTA-chCE7 led to an increased therapeutic efficacy in a xenograft model, resulting in a significantly prolonged overall survival. Thereby, PTX was administered 24 h post RIT in order to adapt peak concentrations of ^{177}Lu -DOTA-chCE7 and PTX in the tumour. Results indicate that PTX has the ability to increase the cytotoxic effects on IGROV1 tumour cells induced by ^{177}Lu -DOTA-chCE7. Mice that received only PTX monotreatment showed no significant difference in tumour growth delay and overall survival compared to

untreated control mice, implying that only subcytotoxic PTX concentrations (600 μg , 31.6 mg/kg) were used. Observation of insignificant tumour suppression of PTX monotreatments compared to untreated controls is in line with previous studies demonstrating the limited subtherapeutic effect of low-dose PTX treatments [35].

Biodistribution studies demonstrated high tumour uptakes for the specific RIC correlating with low remaining levels of activity in the blood pool 72 h post RIC injection, regardless of an additional PTX administration. Thus, PTX did not influence the ^{177}Lu -DOTA-chCE7 uptake in either way. As expected, tumour uptake of the control RIC with or without PTX application was very low, indicating only a non-specific accumulation. Low non-specific tumour uptakes were consequently accompanied by higher remaining levels of activity in the blood pool.

Jang et al. [27] demonstrated that higher PTX dosages (>600 μg) as well as larger mean tumour volumes at therapy start (≈ 200 mm^3) showed decreased interstitial fluid pressure and increased blood vessel permeability resulting in higher RIC accumulation in the tumour. In our studies, increased tumour accumulation was not observed, supporting our assumption that cell cycle arrest in the G2/M phase played a major role during *in vivo*

combination therapy. However, additional effects on the tumour microenvironment caused by PTX cannot be fully excluded, since cellular and tumour microenvironmental effects are known to complement each other [31].

Even though the therapeutic efficacy of ^{177}Lu -DOTA-chCE7 was increased by the introduction of PTX into the treatment scheme, no weight loss or a decreasing number of white blood cells was induced (data not shown).

While the application of a third chemotherapeutic is thought to result in unjustifiable toxicities for patients, RIT has shown to be well tolerated with low toxicity levels. Therefore, RIT/paclitaxel/platinum-based chemotherapy combination offers an alternative treatment strategy that may improve the efficacy of a first-line platinum-paclitaxel treatment. Nevertheless, such an alternative treatment strategy has to be verified in large, randomised clinical trials. Since patterns of platinum resistance and mechanisms of action for microtubule-stabilising agents do not necessarily interact, patients with platinum-refractory, platinum-resistant disease or platinum-resistant relapse might benefit from a RIT/paclitaxel combination. Again, this has to be verified in clinical trials.

Malignant ascites are frequently occurring in patients with advanced ovarian cancer with only limited treatment options. So far, catumaxomab, a trifunctional mAb, is used for the effective treatment of EpCAM-positive tumour cells in the peritoneal cavity [39]. An effective treatment against LICAM-positive tumour cells in the peritoneal cavity might therefore decrease the amount of free tumour cells (spheroids) potentially reducing the burden of occurring ascites.

Conclusions

It is well known that patients suffer from severe side effects (e.g. neuropathy and myelosuppression) induced by high concentrations of PTX during treatment cycles [40]. Since RIT is more tolerable compared to high-dosage chemotherapies, a combination with radiosensitising agents like PTX might result in a similar or better therapeutic outcome, while lower effective therapeutic PTX dosages are necessary compared to mono-chemotherapeutic treatments. The introduction of PTX in the therapy scheme of LICAM-targeted ^{177}Lu -DOTA-chCE7 RIT may provide a potential clinical setup against residual ovarian tumour nodules after first-line tumour resection. Patients may therefore benefit from decreased side effects during therapy and possible increased therapeutic efficacy.

Additional file

Additional file 1: Supplementary information. The file contains discussion and figures on plasma stability test, determination of half-maximal inhibitory concentration (IC_{50}) of paclitaxel, and *in vitro*

cell growth inhibition upon ^{177}Lu -DOTA-chCE7 and paclitaxel treatments via colony assay.

Competing interests

The authors declare that they have no competing interests.

Authors' contributions

DL, JG, EF and RS designed the experiments, analysed the data and wrote the paper. DL, SC and JG performed the experiments. All authors read and approved the final manuscript.

Acknowledgements

This work was supported by the Swiss Cancer Research Foundation (Project No. KFS-2546-02-2010) to Jürgen Grünberg. We would like to thank Laura Bailey for her comments to our manuscript.

Author details

¹Center for Radiopharmaceutical Sciences ETH-PSI-USZ, Paul Scherrer Institute, 5232 Villigen PSI, Switzerland. ²Department of Chemistry and Applied Biosciences, ETH Zürich, 8093 Zürich, Switzerland.

Received: 22 July 2014 Accepted: 26 September 2014

Published online: 03 October 2014

References

1. Siegel R, Ma J, Zou Z, Jemal A: **Cancer statistics, 2014.** *Cancer J Clin* 2014, **64**:9–29.
2. Gubbels JAA, Claussen N, Kapur AK, Connor JP, Patankar MS: **The detection, treatment, and biology of epithelial ovarian cancer.** *J Ovarian Res* 2010, **3**:8.
3. Jelovac D, Armstrong DK: **Recent progress in the diagnosis and treatment of ovarian cancer.** *CA Cancer J Clin* 2011, **61**:183–203.
4. UK Cancer Research: **Ovarian cancer survival statistics.** 2013. [http://www.cancerresearchuk.org/cancer-info/cancerstats/types/ovary/survival/ovarian-cancer-survival-statistics] (accessed 12 Sept 2014).
5. Frederick PJ, Straughn JM, Alvarez RD, Buchsbaum DJ: **Preclinical studies and clinical utilization of monoclonal antibodies in epithelial ovarian cancer.** *Gynecol Oncol* 2009, **113**:384–390.
6. Berek J, Taylor P, McGuire W, Smith LM, Schultes B, Nicodemus CF: **Oregovomab maintenance monoimmunotherapy does not improve outcomes in advanced ovarian cancer.** *J Clin Oncol* 2008, **27**:418–425.
7. Schilder RJ, Pathak HB, Lokshin AE, Holloway RW, Alvarez RD, Aghajanian C, Min H, Devarajan K, Ross E, Drescher CW, Godwin AK: **Phase II trial of single agent cetuximab in patients with persistent or recurrent epithelial ovarian or primary peritoneal carcinoma with the potential for dose escalation to rash.** *Gynecol Oncol* 2009, **113**:21–27.
8. Bookman MA: **Evaluation of monoclonal humanized anti-HER2 antibody, trastuzumab, in patients with recurrent or refractory ovarian or primary peritoneal carcinoma with overexpression of HER2: a phase II trial of the Gynecologic Oncology Group.** *J Clin Oncol* 2003, **21**:283–290.
9. Leone Roberti Maggiore U, Bellati F, Ruscio I, Gasparri ML, Alessandri F, Venturini PL, Ferrero S: **Monoclonal antibodies therapies for ovarian cancer.** *Expert Opin Biol Ther* 2013, **13**:739–764.
10. Oei AL, Sweep FC, Thomas CM, Boerman OC, Massuger LF: **The use of monoclonal antibodies for the treatment of epithelial ovarian cancer (review).** *Int J Oncol* 2008, **32**:1145–1157.
11. Pouget J-P, Navarro-Teulon I, Bardiès M, Chouin N, Cartron G, Pèlerin A, Azria D: **Clinical radioimmunotherapy—the role of radiobiology.** *Nat Rev Clin Oncol* 2011, **8**:720–734.
12. Milenic DE, Brady ED, Brechbiel MW: **Antibody-targeted radiation cancer therapy.** *Nat Rev Drug Discov* 2004, **3**:488–499.
13. Verheijen RH, Massuger LF, Benigno BB, Epenetos AA, Lopes A, Soper JT, Markowska J, Vyzula R, Jobling T, Stamp G, Spiegel G, Thurston D, Falke T, Lambert J, Seiden M: **Phase III trial of intraperitoneal therapy with yttrium-90-labeled HMFG1 murine monoclonal antibody in patients with epithelial ovarian cancer after a surgically defined complete remission.** *J Clin Oncol* 2006, **24**:571–578.
14. Oei AL, Verheijen RH, Seiden MV, Benigno BB, Lopes A, Soper JT, Epenetos AA, Massuger LF: **Decreased intraperitoneal disease recurrence in epithelial ovarian cancer patients receiving intraperitoneal consolidation**

- treatment with yttrium-90-labeled murine HMFG1 without improvement in overall survival. *Int J Cancer* 2007, **120**:2710–2714.
15. Friedli A, Fischer E, Novak-Hofer I, Cohrs S, Ballmer-Hofer K, Schubiger PA, Schibli R, Grünberg J: **The soluble form of the cancer-associated L1 cell adhesion molecule is a pro-angiogenic factor.** *Int J Biochem Cell Biol* 2009, **41**:1572–1580.
 16. Kaifi JT, Reichelt U, Quaa A, Schurr PG, Wachowiak R, Yekebas EF, Strate T, Schneider C, Pantel K, Schachner M, Sauter G, Izbickei JR: **L1 is associated with micrometastatic spread and poor outcome in colorectal cancer.** *Mod Pathol* 2007, **20**:1183–1190.
 17. Thies A, Schachner M, Moll I, Berger J, Schulze H-J, Brunner G, Schumacher U: **Overexpression of the cell adhesion molecule L1 is associated with metastasis in cutaneous malignant melanoma.** *Eur J Cancer* 2002, **38**:1708–1716.
 18. Issa Y, Nummer D, Seibel T, Mürköster SS, Koch M, Schmitz-Winnenthal F-H, Galindo L, Weitz J, Beckhove P, Altevogt P: **Enhanced L1CAM expression on pancreatic tumor endothelium mediates selective tumor cell transmigration.** *J Mol Med* 2008, **87**:99–112.
 19. Fogel M, Gutwein P, Mechttersheimer S, Riedle S, Stoeck A, Smirnov A, Edler L, Ben-Arie A, Huszar M, Altevogt P: **L1 expression as a predictor of progression and survival in patients with uterine and ovarian carcinomas.** *Lancet* 2003, **362**:869–875.
 20. Stoeck A, Gast D, Sanderson MP, Issa Y, Gutwein P, Altevogt P: **L1CAM in a membrane-bound or soluble form augments protection from apoptosis in ovarian carcinoma cells.** *Gynecol Oncol* 2007, **104**:461–469.
 21. Novak-Hofer I: **The L1 cell adhesion molecule as a target for radioimmunotherapy.** *Cancer Biother Radiopharm* 2007, **22**:175–184.
 22. Gavert N, Ben-Shmuel A, Raveh S, Ben-Ze'ev A: **L1CAM in cancerous tissues.** *Expert Opin Biol Ther* 2008, **8**:1749–1757.
 23. Weidle UH, Eggle D, Klostermann S: **L1CAM as a target for treatment of cancer with monoclonal antibodies.** *Anticancer Res* 2009, **29**:4919–4931.
 24. Kiefel H, Bondong S, Hazin J, Ridinger J, Schirmer U, Riedle S, Altevogt P: **L1CAM: a major driver for tumor cell invasion and motility.** *Cell Adh Migr* 2012, **6**:374–384.
 25. Fischer E, Grünberg J, Cohrs S, Hohn A, Waldner-Knogler K, Jeger S, Zimmermann K, Novak-Hofer I, Schibli R: **L1CAM-targeted antibody therapy and ¹⁷⁷Lu-radioimmunotherapy of disseminated ovarian cancer.** *Int J Cancer* 2012, **130**:2715–2721.
 26. Novak-Hofer I, Cohrs S, Grünberg J, Friedli A, Schlatter MC, Pfeifer M, Altevogt P, Schubiger PA: **Antibodies directed against L1CAM synergize with genistein in inhibiting growth and survival pathways in SKOV3ip human ovarian cancer cells.** *Cancer Lett* 2008, **261**:193–204.
 27. Jang B-S, Lee S-M, Kim HS, Shin IS, Razjouyan F, Wang S, Yao Z, Pastan I, Dreher MR, Paik CH: **Combined-modality radioimmunotherapy: synergistic effect of paclitaxel and additive effect of bevacizumab.** *Nucl Med Biol* 2012, **39**:472–483.
 28. Vallon M, Seidl C, Blechert B, Li Z, Gilbertz K-P, Baumgart A, Aichler M, Feuchtinger A, Gaertner FC, Bruchertseifer F, Morgenstern A, Walch AK, Senekovitsch-Schmidtke R, Essler M: **Enhanced efficacy of combined ²¹³Bi-DTPA-F3 and paclitaxel therapy of peritoneal carcinomatosis is mediated by enhanced induction of apoptosis and G2/M phase arrest.** *Eur J Nucl Med Mol Imaging* 2012, **39**:1886–1897.
 29. Kelly MP, Lee ST, Lee FT, Smyth FE, Davis ID, Brechbiel MW, Scott AM: **Therapeutic efficacy of ¹⁷⁷Lu-CHX-A"-DTPA-hu3S193 radioimmunotherapy in prostate cancer is enhanced by EGFR inhibition or docetaxel chemotherapy.** *Prostate* 2009, **69**:92–104.
 30. Taghian AG, Abi-Raad R, Assaad SI, Casty A, Ancukiewicz M, Yeh E, Molokhia P, Attia K, Sullivan T, Kuter I, Boucher Y, Powell SN: **Paclitaxel decreases the interstitial fluid pressure and improves oxygenation in breast cancers in patients treated with neoadjuvant chemotherapy: clinical implications.** *J Clin Oncol* 2005, **23**:1951–1961.
 31. Rohrer Bley C, Furmanova P, Orlowski K, Grosse N, Broggini-Tenzer A, McSheehy PMJ, Pruschy M: **Microtubule stabilising agents and ionising radiation: multiple exploitable mechanisms for combined treatment.** *Eur J Cancer* 2013, **49**:245–253.
 32. Grünberg J, Knogler K, Waibel R, Novak-Hofer I: **High-yield production of recombinant antibody fragments in HEK-293 cells using sodium butyrate.** *Biotechniques* 2003, **34**:968–972.
 33. Grünberg J, Lindenblatt D, Dorrer H, Cohrs S, Zhernosekov K, Köster U, Türler A, Fischer E, Schibli R: **Anti-L1CAM radioimmunotherapy is more effective with the radiolanthanide terbium-161 compared to lutetium-177 in an ovarian cancer model.** *Eur J Nucl Med Mol Imaging* 2014, **41**:1907–1915.
 34. Milenic D, Garmestani K, Brady E, Baidoo K, Albert P, Wong K, Flynn J, Brechbiel M: **Multimodality therapy: potentiation of high linear energy transfer radiation with paclitaxel for the treatment of disseminated peritoneal disease.** *Clin Cancer Res* 2008, **14**:5108–5115.
 35. Kelly M, Lee F, Smyth F, Brechbiel M, Scott A: **Enhanced efficacy of ⁹⁰Y-radiolabeled anti-Lewis Y humanized monoclonal antibody hu3S193 and paclitaxel. Combined-modality radioimmunotherapy in a breast cancer model.** *J Nucl Med* 2006, **47**:716–725.
 36. Zhao L, Au JL-S, Wientjes MG: **Comparison of methods for evaluating drug-drug interaction.** *Front Biosci (Elite Ed)* 2010, **2**:241–249.
 37. Knogler K, Grünberg J, Zimmermann K, Cohrs S, Honer M, Ametamey S, Altevogt P, Fogel M, Schubiger PA, Novak-Hofer I: **Copper-67 radioimmunotherapy and growth inhibition by anti-L1-cell adhesion molecule monoclonal antibodies in a therapy model of ovarian cancer metastasis.** *Clin Cancer Res* 2007, **13**:603–611.
 38. Das G, Holiday D, Gallardo R, Haas C: **Taxol-induced cell cycle arrest and apoptosis: dose response relationship in lung cancer cells of different wild-type p53 status and under isogenic condition.** *Cancer Lett* 2001, **165**:147–153.
 39. Heiss M, Murawa P, Koralewski P, Kutarska E, Kolesnik O, Ivanchenko V, Dudnichenko A, Aleknaviciene B, Razbadauskas A, Gore M, Ganea-Motan E, Ciuleanu T, Wimberger P, Schmittel A, Schmalfeldt B, Burges A, Bokemeyer C, Lindhofer H, Lahr A, Parsons S: **The trifunctional antibody catumaxomab for the treatment of malignant ascites due to epithelial cancer: results of a prospective randomized phase II/III trial.** *Int J Cancer* 2010, **127**:2209–2221.
 40. Kudlowitz D, Muggia F: **Defining risks of taxane neuropathy: insights from randomized clinical trials.** *Clin Cancer Res* 2013, **19**:4570–4577.

doi:10.1186/s13550-014-0054-2

Cite this article as: Lindenblatt et al.: Paclitaxel improved anti-L1CAM lutetium-177 radioimmunotherapy in an ovarian cancer xenograft model. *EJNMMI Research* 2014 **4**:54.

Submit your manuscript to a SpringerOpen® journal and benefit from:

- Convenient online submission
- Rigorous peer review
- Immediate publication on acceptance
- Open access: articles freely available online
- High visibility within the field
- Retaining the copyright to your article

Submit your next manuscript at ► springeropen.com