

RESEARCH

Open Access



Sexual dimorphism of leptin and adiposity in children between 0 and 10 years: a systematic review and meta-analysis

Jose Guillermo Ortega-Avila^{1,2*} , Harry García-Muñoz^{2,3,4}, Alejandro Segura Ordoñez^{2,3} and Blanca C. Salazar Contreras³

Abstract

Background: Differences in adolescents and adults by sex in blood levels of leptin and adiposity have been described; however, it is not yet clear if these differences arise from the prepubertal stage in subjects with a normal-weight. Therefore, we examine whether there are differences by sex in levels of blood leptin and adiposity in children with a normal-weight between 0 and 10 years old.

Methods: Search strategy: eligible studies were obtained from three electronic databases (Ovid, Embase and LILACS) and contact with experts. Selection criteria: healthy children up to 10 years of age with normal-weight according to age.

Data collection and analyses: data were extracted by four independent reviewers using a predesigned data collection form. For the analysis, we stratified according to age groups (newborns, 0.25–0.5 years, 3–5.9 years, 6–7.9 years, 8–10 years). The statistical analysis was performed in the R program.

Results: Of the initially identified 13,712 records, 21 were selected in the systematic review and meta-analysis. The sex was associated with the overall effect on blood leptin (pooled MD = 1.72 ng/mL, 95% CI: 1.25–2.19) and body fat percentage (pooled MD = 3.43%, 95% CI: 2.53–4.33), being both higher in girls. This finding was consistent in the majority of age groups.

Conclusion: The results of our meta-analyses support the sexual dimorphism in circulating blood leptin and body fat percentage between girls and boys with normal-weight from prepuberty.

Highlights

- Differences by sex in blood leptin and body fat percentage in children are present before 10 years old
- Girls have higher circulating leptin and body fat percentage than boys
- The sex differences in blood leptin and adiposity in children increase progressively with the age

*Correspondence: jgortega@javerianacali.edu.co

¹ Grupo de Investigación de Ciencias Básicas y Clínicas de la Salud, Departamento de Ciencias Básicas de la Salud, Pontificia Universidad Javeriana, Seccional-Cali, Cali, Colombia
Full list of author information is available at the end of the article



© The Author(s) 2022, corrected publication 2022. **Open Access** This article is licensed under a Creative Commons Attribution 4.0 International License, which permits use, sharing, adaptation, distribution and reproduction in any medium or format, as long as you give appropriate credit to the original author(s) and the source, provide a link to the Creative Commons licence, and indicate if changes were made. The images or other third party material in this article are included in the article's Creative Commons licence, unless indicated otherwise in a credit line to the material. If material is not included in the article's Creative Commons licence and your intended use is not permitted by statutory regulation or exceeds the permitted use, you will need to obtain permission directly from the copyright holder. To view a copy of this licence, visit <http://creativecommons.org/licenses/by/4.0/>. The Creative Commons Public Domain Dedication waiver (<http://creativecommons.org/publicdomain/zero/1.0/>) applies to the data made available in this article, unless otherwise stated in a credit line to the data.

Keywords: Leptin, Adiposity, Children, Sex, Normal-weight

Background

Leptin is a peptide hormone produced primarily by the subcutaneous white adipocytes, whose main functions are to regulate satiety and caloric intake [1]. The central action of leptin in hypothalamic neurons leads to reduced caloric intake and increases energetic expenditure in the long-term [2]. Additionally, leptin has been involved in the regulation of multiple processes such as immune response, endothelial function, and platelet activation among others [3]. The dysregulation in the synthesis and/or sensibility of this adipokine in both sexes has been associated during adulthood with the development of chronic diseases [4].

Levels of circulating leptin in women are higher than in men. Apparently, the main determinant of its concentration in blood is the fat mass, with which it has a strong statistical correlation [5–7]. Currently is assumed that the differences of both body fat and blood leptin levels rise during puberty and therefore these sexual dimorphisms may be associated with the changes in the levels of steroid sexual hormones [8–10]. However, some studies have suggested that the differences in the indicators of adiposity arise before adolescence [11]. Besides this controversy, the majority of the studies of leptin in children have been performed in populations with overweight and obesity where the sex influence usually is not analysed.

Studying the blood leptin levels and adiposity in prepubescent children with normal-weight by sex can help to give clarity on how these factors contribute to disorders in the body composition and metabolism during adolescence and adulthood [12–14]. Therefore, the aim of this systematic review/meta-analysis was to examine whether there are differences by sex in levels of blood leptin and body fat percentage in children with a normal-weight between 0 and 10 years old.

Main text

This systematic review was conducted using a protocol following the guideline of Preferred Reporting Items for Systematic Review and Meta-Analyses (PRISMA) [15]. This protocol was registered in PROSPERO (code: CRD42020158478).

Search strategy and inclusion/exclusion criteria

A search algorithm was applied to each of three electronic databases (Ovid, Embase and LILACS), without language or publication date restrictions, until June 2022. The terms used for the search were; "leptin", "adiposity", "obesity", "body composition", "abdominal obesity",

"pediatric obesity", "body adiposity index", "bmi trajectory", "body mass index", "waist circumference", "fat mass", "visceral adiposity index", "visceral fat", "fat thickness", "body fat percentage", "anthropometric indices", "body shape index", "anthropometric parameter", "obesity indices", "triceps skinfold thickness", "infant", "child", "children", and "adolescent" (Additional file 1). Search strategies were developed using text words as well as medical subject headings (MeSH) associated with leptin and body fat percentage in normal-weight children. While the exact terms varied somewhat depending on the database searched, keywords included such terms as "leptin", "body composition", "children", and "body fat percentage". To find studies, we also contacted experts in the field by email who were selected from the articles reviewed.

In order to reduce the effects of hormonal changes on results, we included observational studies and controlled clinical trials that included healthy children up to 10 years of age [16], with normal-weight ($BMI \pm 1$ SD according to age) and simultaneous reports for leptin and body fat percentage discriminated by sex. Case studies, conference abstracts, letters to the editor, review articles, and articles without complete information or no response from the authors after contact by email were excluded.

Data extraction and risk of bias assessment

A data registry format was tested with 40 articles (10 per reviewer), in which study identification information was filled and eligibility criteria were sought; the results were evaluated by a peer reviewer and later, as a group, possible discrepancies were discussed to reach consensus on the information to be contained in each cell. The results of the databases were included in a spreadsheet and duplicates were eliminated; four reviewers in pairs performed the selection of studies by title and abstract according to eligibility criteria and discrepancies were resolved by a third researcher from an alternative pair. The selected studies were reviewed taking into account the full text of each article by eligibility criteria; from these articles, the information on the variables was extracted.

We used the Newcastle–Ottawa Quality Assessment Scale as a tool of quality assessment for non-randomised studies [17], this scale uses a score to judge a study based on three broad perspectives: the selection of the study groups; the comparability of the groups; and the ascertainment of either the exposure or outcome of interest for

case-control or cohort studies, respectively. To evaluate the quality of cross-sectional studies selected, we adapted the previously validated Newcastle-Ottawa Quality Scale for cohort studies [18], according to this scale, the studies were categorised into high-quality or low-quality studies using a score of 6 as a cut-off point.

Statistical analysis

To estimate the effect of sex on blood leptin and adiposity in children between 0 and 10 years, the leptin concentrations were expressed in ng/mL when necessary. For the studies that reported medians and interquartile ranges, the mean and standard deviation (SD) were estimated using the methodology of McGrath et al. [19], if this was not the case, SD was estimated by standard equations from the standard error (SE) or confidence interval (CI) [20], if data were still insufficient for mean and SD estimation, an email request was sent to the authors.

We stratified the meta-analysis by age groups (Newborns, 0.25–0.5, 3–5.9, 6–7.9, 8–10 years). The effect size of weighted mean difference (MD) was estimated with a random-effect model since this model could incorporate the heterogeneity, and therefore proved a more generalised result. The heterogeneity of the average effect size was evaluated based on the calculation of the I² index; if the value of this statistic was $\geq 75\%$, we considered it a high variation. We performed a sensitivity analysis using the leave-one-out method, iteratively excluding one study at each analysis, to assess the effect of one particular study on the pooled outcomes and confirm that our findings were not driven by any single study [21]. Outlier analysis was used to identify and estimate the effect of reports with extreme effect sizes in each age subgroup. Outlier studies were defined when the 95% CI was outside the 95% CI of the pooled effect. Subgroup analyses were run to find the source of heterogeneity considering, study design, technique of measurement, geographic region, and study quality. The publication bias was assessed by funnel plots and Egger's regression when the number of studies was ≥ 6 [22, 23].

The analysis was performed with the R programming language with R-studio platform version 4.0.2 (R Project for Statistical Computing, <https://www.r-project.org/>) using Meta, Estmeansd, and Dmetar packages [24, 25]. A *P*-value ≤ 0.05 was considered statistically significant.

Results

Study identification and selection

A total of 13,712 articles were identified in an initial search. After eliminating 4658 duplicate studies and 847 reports of conferences, 8207 were screened by title and abstract, and 7408 were eliminated because not meet the eligibility criteria. A total of 799 articles

were reviewed in full text. Of those, 22 articles met our inclusion criteria; one article was excluded because the mean and SD of body fat percentage were considered biologically not plausible [26]. Finally, 21 articles were included in the systematic review and meta-analysis [27–47] (Fig. 1).

Characteristic of selected studies

In the 21 studies selected (Table 1), a total of 5619 girls and 5692 boys were included for leptin, while 5758 girls and 5870 boys for body fat percentage. The articles were published in English language between 1999 and 2022, from Europe ($n=10$), America ($n=5$), Oceania ($n=3$), Asia ($n=3$). Sample sizes ranged from 12 to 4633 subjects; ten studies had a total sample size greater than 200 subjects. Study designs were as follows; cross-sectional ($n=12$), and cohort ($n=9$). The blood leptin was assessed in plasma ($n=8$) or serum ($n=11$); two studies did not report the type of blood sample used [33, 34]. The majority of studies reported that blood samples were drawn after fasting, except the report of Dencker et al. [44], and those studies that included umbilical cord blood samples [27–29]. Concentrations of leptin were determined by enzyme-linked immunosorbent assay (ELISA) ($n=5$), radio immuno assay (RIA) ($n=14$), and Milliplex multiplex assays (MMA) ($n=2$).

The body fat percentage was measured by plethysmography (PG) ($n=3$), bioelectrical impedance (BIA) ($n=5$), dual-energy X-ray absorptiometry (DXA) ($n=5$), skinfolds ($n=7$) and total body electrical conductivity (TOBEC) ($n=1$). Body index mass (BMI) was reported as kg/m² ($n=10$), standardised BMI ($n=1$), BMI Z-score ($n=4$), and in five studies with newborns and children in the first year of life, weight and height were reported.

Association of sex with leptin levels

The overall effect of sex in the children was associated with higher levels of blood leptin in girls (MD = 1.72 ng/mL, 95% CI: 1.25–2.19, $I^2=97\%$), (Fig. 2). The analysis indicated significant differences between age groups ($P<0.001$). Newborn girls had 2.09 ng/mL higher serum leptin levels than boys, but was not significant (95% CI: -0.40 – 4.58 , $I^2=0.0\%$, $P=0.62$). Between 0.25 and 0.5 years, boys had 0.24 ng/mL lower leptin (95% CI: -0.01 – 0.49 ng/mL, $I^2=97\%$, $P<0.01$). The group 3–5.9 years, the leptin was 1.25 ng/mL (95% CI: 0.46–2.04 ng/mL, $I^2=96\%$, $P=P<0.01$) higher in girls, while that the ages of 6–7.9 years and 8–10 years the blood leptin was, respectively, of 1.72 ng/mL (95% CI: 0.95–2.49 ng/mL, $I^2=76\%$, $P<0.01$) and 2.54 ng/mL (95% CI: 1.81–3.27 ng/mL, $I^2=72\%$, $P<0.01$) higher in girls.

Table 1 Characteristic of studies selected

Studies by age groups	Study design	Country	Sample size by sex		Age (years)	BMI/BMI z score/BMI sds/Weight		Body fat percentage		Circulating leptin							
			Girls n (%)	Boys n (%)		Girls mean(±SE)	Boys mean(±SE)	Girls means (±SE)	Boys means (±SE)	Method	Girls (ng/mL)	Boys (ng/mL)	Blood sample	Method			
Newborns																	
Okereke [27]	Cross-sectional	EEUU	32 (41)	46 (59)	-	3.2 (0.41) ^a	3.5 (0.5) ^a	11.25 (3.98)	11.9 (4.4)	16 (13.8)	12.7 (12.8)	Serum	RIA				
Javald [28]	Cohort	UK	50 (43)	67 (57)	-	3.2 (0.5) ^a	3.51 (0.5) ^a	15.9 (13.6;19.4) [†]	14.5 (12;16) [†]	9.1 (5.9;13.9) [†]	7.4 (4.2;11.4) [†]	Serum	RIA				
Euclydes [29]	Cohort	Brazil	62 (59.6)	42 (40.4)	-	3.4 (0.4) ^a	3.34 (0.4) ^a	9.8 (4.1)	8.2 (3.6)	29 (26.9)	22.8 (25.1)	Plasma	ELISA				
0.25 to 0.5 years																	
Estampador [30]	Cohort	Sweden	15 (48)	16 (52)	0.32 (0.03)	6.2 (1.07) ^a	6.9 (0.69) ^a	25.6 (0.79)	27.1 (0.25)	4.9 (2.9)	4 (1.6)	Plasma	RIA				
de Fluiter [31]	Cohort	Netherlands	138 (46)	159 (54)	0.25	5.7 (5.1;6.2) ^a	6.2 (5.7;6.6) ^a	23.3 (19.6;26.5) [†]	22.1 (19.0;24.6) [†]	1.7 (1.5;1.9) [†]	1.3 (1.1;1.5) [†]	Plasma	MMA				
3 to 5.9 years																	
Jáuregui [33]	Cross-sectional	Mexico	197 (49)	203 (51)	4.7 (0.5)	0.2(1) [†]	0.2(1.1) [†]	25 (5.7)	22.8 (5.8)	3.5 (3.1)	2.6 (2.7)	-	ELISA				
Francis [34]	Cohort	EEUU	365 (48)	396 (52)	4.8 (0.71)	0.05(0.9)	0.2(1.1)	19.7(6.8)	19.9(6.6)	6.7 (1.9)	3.83(1.0)	-	MMA				
6 to 7.9 years																	
Garnett [35]	Cohort	Australia	137 (54)	118 (46)	7.8 (0.6)	16.9 (2.3)	16.7 (2.5)	23.6 (8.4)	17.4 (8.6)	3.4 (3.2;3.6) [†]	2.2 (2.0;2.4) [†]	Serum	RIA				
Kim (2011) [36]	Cross-sectional	Korea	229 (50)	231 (50)	7.8 (0.5)	15.5 (1.4)	16 (1.2)	16.7 (4.1)	13.8 (4.1)	3.4 (2.1)	2.5 (1.8)	Serum	RIA				
Metcalf [37]	Cohort	UK	158 (56)	122 (44)	6.9 (0.3)	16.4 (2.8)	15.7 (2.1)	21.9 (12.8) [‡]	14.4 (8.0) [‡]	4 (5;2) [‡]	2.6 (2.7) [‡]	Serum	RIA				
Jeffery [38]	Cohort	UK	148 (55)	121 (45)	7.8(0.3)	16.9 (3.1)	15.9 (2.3)	23.3 (14.5) [‡]	14.8 (9.8) [‡]	4.4 (6.6) [‡]	2.6 (3.1) [‡]	Serum	RIA				
Erhardt [32]	Cohort	Europe (eight countries)	101	134	7.0	0.54(0.22) [†]	0.21 (0.18) [†]	30 (1.72) [‡]	26 (1.2) [‡]	4.6 (1.3) [‡]	2.7 (0.6) [‡]	Serum	RIA				
			41 (48)	45 (52)	6 to 6.9 [†]	15.8(1.1)	15.8 (1)	16.9 (2.7)	13.6 (2.9)	2.7 (1.5;3.7) [†]	1.3 (0.8;2.5) [†]	Serum	ELISA				
			72 (53)	65 (47)	7 to 7.9 [†]	15.9(1)	15.9 (1.2)	16.5 (3.1)	14.5 (3.5)	2.0(1.4;3.8) [†]	1.7 (1.0;3.3) [†]	Serum	ELISA				

Table 1 (continued)

Studies by age groups	Study design	Country	Sample size by sex		Age (years)		BMI/BMI z score/BMI sds/Weight		Body fat percentage		Circulating leptin		Blood sample	Method
			Girls n (%)	Boys n (%)	Girls mean (±SE)	Boys mean (±SE)	Girls	Boys	Girls means (±SE)	Boys means (±SE)	Method	Girls (ng/mL)		
Vitery [39]	Cross-sectional	Colombia	56 (51)	54 (49)	7.9 (1.2)	7.8 (1.3)	16.4 (1.8)	16.1 (1.2)	22.4 (4.1)	18.4 (3.5)	6.9 (5.0)	3.3 (3.7)	Plasma	ELISA
Haapala [40]	Cohort	Finland	192 (49)	198 (51)	7.6 (0.4)	7.7 (0.4)	-0.2 (1.1) [†]	-0.2 (1.1) [†]	22.2 (7.4)	17.2 (7.7)	5.9 (4.2)	4.2 (3)	Plasma	RIA
8 to 10 years														
Byrnes [41]	Cross-sectional	Australia	30 (51)	29 (49)	8.6 (0.2)	8.5 (0.3)	0.5 [†]	0.3 [†]	25.9 (1.1)	18.4 (1.2) [§]	11.5 (2.2) [§]	6.5 (1) [§]	Plasma	RIA
Arrow-smith [42]	Cohort	Australia	12 (46)	14 (54)	7.9 (0.8)	8.3 (0.8)	16.6 (2.2)	18.3 (3.7)	19.9 (4.5)	19.2 (5.8)	6.2 (3.7)	8.3 (5.6)	Plasma	RIA
Celli [43]	Cohort	Italy	395	447	8.5 (7.2; 9.6) [¶]	9.4 (8.3; 10.6) [¶]	20.6 (16.1; 24.1)	21.5 (16.1; 24.8)	35.2 (11.1)	31.7 (11.7)	11.9 (5.2; 20.6) [¶]	9.9 (3.8; 18.4) [¶]	Serum	RIA
Dencker [44]	Cross-sectional	Sweden	79 (46)	91 (54)	9.8 (0.6)	10 (0.6)	17.4 (2.7)	17.6 (2.6)	21.9 (8.4)	16.1 (8.3)	5.3 (4.8)	3.2 (4.2)	Serum	RIA
Yam-borisut [45]	Cross-sectional	Thailand	28 (55)	23 (45)	8.1 (0.9)	8.3 (0.9)	-0.11 [†]	-0.35 [†]	16.9 (5.6)	12.6 (4.7)	6 (2.6)	3.7 (2.4)	Serum	RIA
Meitcalf [37]	Cohort	UK	148 (56)	114 (44)	8.9 (0.3)	8.9 (0.3)	17.9 (3.7)	16.4 (2.8)	26.4 (13.4) [§]	16.6 (12.7) [§]	6.7 (7.1) [§]	3.8 (3.8) [§]	Serum	RIA
Jeffery [38]	Cohort	UK	101 (43)	134 (57)	8.0	8.0	0.53 [†]	0.28 [†]	30.1 (2.1) [§]	26.6 (1.7) [§]	5.3 (1.7)	3.2 (1.2)	Serum	RIA
Nightingale [46]	Cross-sectional	UK	101 (58)	134 (42)	10.0	10.0	0.62 [†]	0.43 [†]	33 (1.8) [§]	27.8 (1.5) [§]	7.2 (1.9)	4.5 (1.1)	Serum	RIA
Thillan [47]	Cross-sectional	Sri Lanka	84 (51)	80 (49)	9.1 (0.3)	9.2 (0.3)	14.9 (13.7; 16.3) [¶]	14.6 (13.8; 17) [¶]	20.7 (15.5; 27.1) [¶]	16.2 (12.6; 24.1) [¶]	3.7 (2.1; 6.6) [¶]	2.2 (0.9; 5.3) [¶]	Plasma	ELISA

ELISA enzyme-linked immunosorbent assay, RIA radio immuno assay, MMA Milliplex multiplex assays, BMI: body mass index (kg/m²), DXA dual-energy X-ray absorptiometry scan; TOBEC total body electrical conductivity, BIA bioelectrical impedance analysis, PG plethysmography, MPA SD: standard deviation; weight in kg and SD, BMI z-score[†]; BMI sds[‡]; standard error[§]; median (interquartile range)[¶]; 95% confidence interval[§]; age range[¶]; median (range)[§]

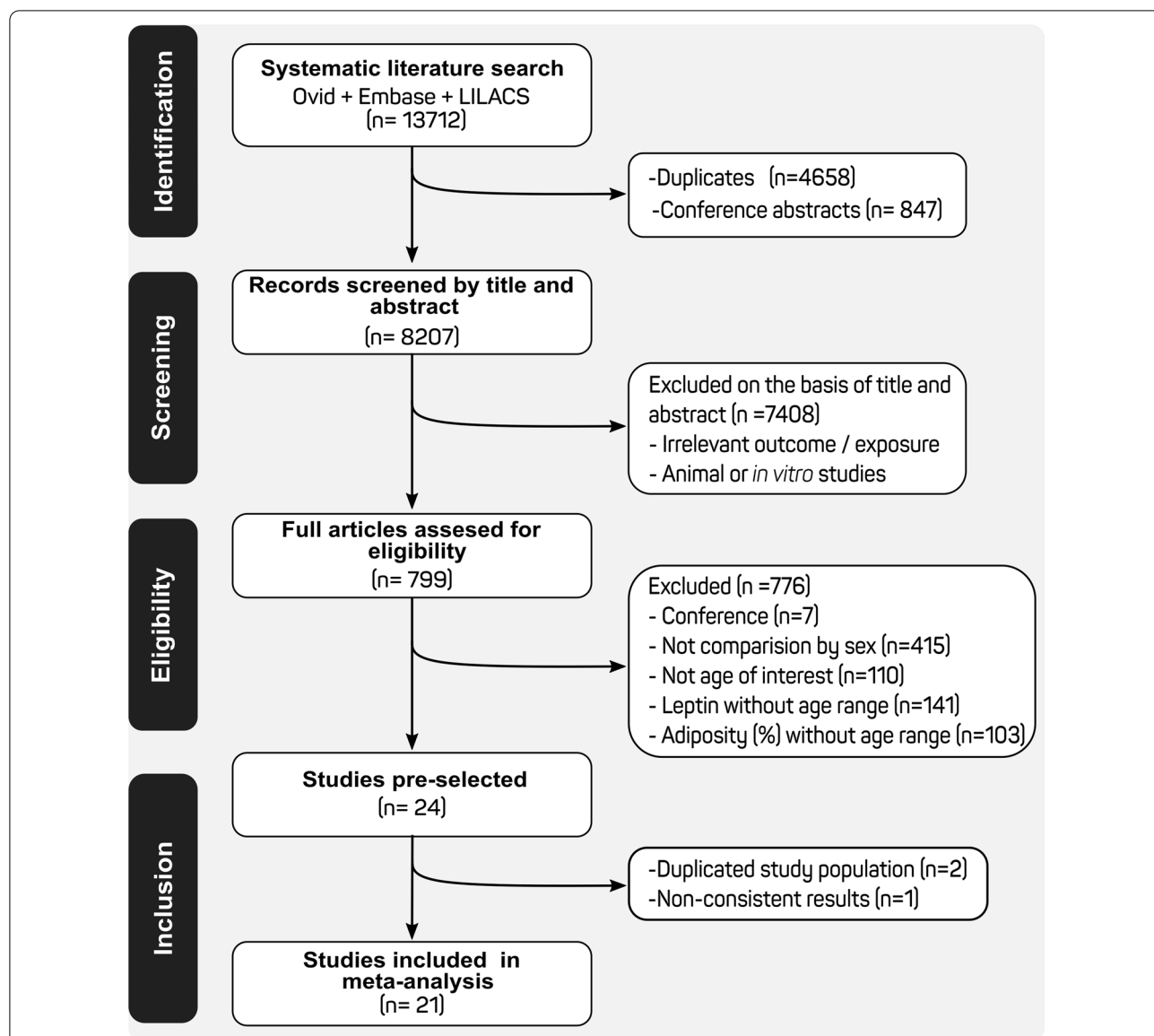


Fig. 1 Systematic review flow chart

Association of body fat percentage with sex

Adiposity was higher in girls in the overall effect (MD=3.32%, 95% CI: 2.42 to 4.21, $I^2=88%$, $P<0.0001$), with significant differences between age groups ($P<0.001$) (Fig. 3). Meta-analysis showed that body fat percentage was lower in boys except in the newborn group where

the association was not significant (MD=1.44%, 95% CI: - 0.26–3.15, $I^2=80%$, $P=0.0976$). Boys in the group 0.25–0.5 years had a 1.56% (95% CI: 0.79–2.33%, $I^2=50%$, $P=0.14$) lower body fat percentage. For the groups of 3–5.9 years, was 1.27% (95% CI: 0.48–2.06%, $I^2=65%$, $P=0.02$); to 6–7.9 years was 4.72% (95% CI: 3.38–6.05%,

(See figure on next page.)

Fig. 2 Forest plots of the effect of sex in children's normal-weight on leptin concentrations between 0 and 10 years old. Forest plot showing the overall effect by age groups of newborns (A), 0.25–0.5 yrs (B), 3–5.9 yrs (C), 6–7.9 yrs (D), and 8–10 yrs (E). Results are presented as mean difference (MD) (95% CI). The study-specific MD and 95% CI are represented by the grey square and horizontal line, respectively. The centre of the blue diamond and the vertical dashed line displays the estimated overall effect size of all studies; the width of the diamond represents the overall pooled 95% CI

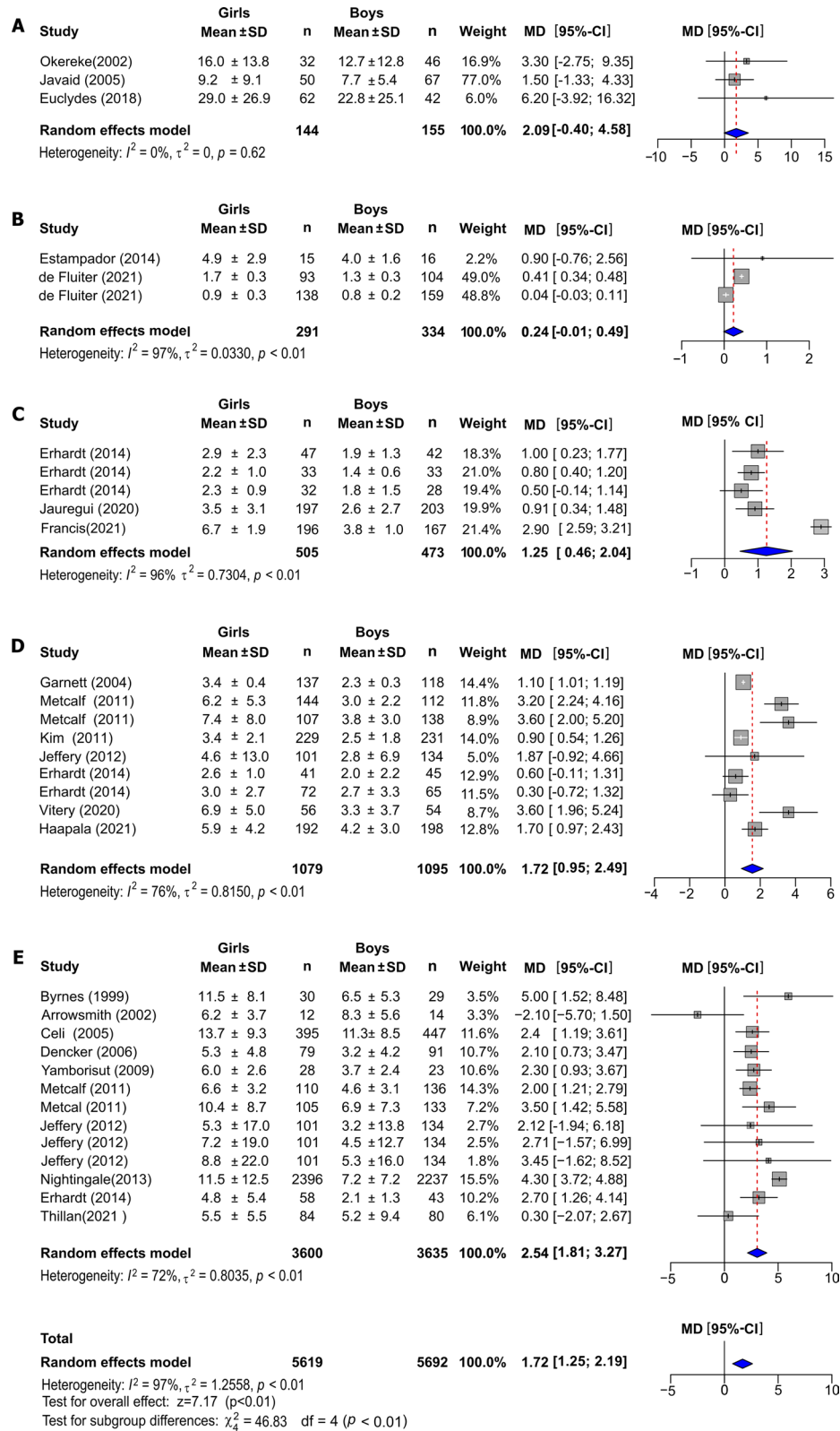


Fig. 2 (See legend on previous page.)

$I^2=88\%$, $P<0.01$) and to the group 8–10 years 4.61% (95% CI: 3.08–6.14%, $I^2=82.4\%$, $P<0.01$) higher in girls in all cases.

Sensitivity analysis

Although there was high heterogeneity in the levels of leptin in the groups of 0.25–0.5 years, 3–5.9 years and 6–7.9 years ($I^2>75\%$), the majority of studies showed blood leptin and body fat percentage higher in girls than in boys across all age groups. In the group of 3–5.9 years, the omitting of results of Francis (2021) [34] showed decreased the heterogeneity and the effect in blood leptin (MD=0.80 ng/mL, 95% CI: 0.52 to 1.062 ng/mL, $p<0.0001$, $I^2=0\%$). In the group of 8–10 years, were identified as outliers the studies of Arrow-smith [42] and Nightingale [46], the removal of these studies resulted in an increase of the effect (MD=2.59 ng/mL, 95% CI: 1.62–3.32 ng/mL, $p<0.0001$, $I^2=71.6\%$). The omitting only of the study of Nightingale [46], resulted in a considerable reduction of heterogeneity (MD=2.19 ng/mL, 95% CI: 1.72–2.66 ng/mL, $p<0.0001$, $I^2=15.8\%$).

We found a high heterogeneity for body fat percentage in the age groups of newborns, 6–7.9 years, and 8–10 years ($I^2>75\%$). In the newborn group the omitting the study of Okereke [27], resulted in a significant effect of sex on fat (MD=2.39, 95% CI: 1.35–3.43%, $p=0.000$, $I^2=51.1\%$). In the children of group 3–5.9 years, the omitting of Francis [34], reduced the heterogeneity in the adiposity (MD=1.69, 95% CI: 1.08–2.29%, $p=<0.0001$, $I^2=0\%$). In the group 6–7.9 years old, we identified as outliers the studies of Metcalf [37] and Erhardt [32], the removal of these two studies increased the effect of sex (MD=5.20, 95% CI: 3.58 to 6.83, $p<0.0001$, $I^2=92.0\%$). In the group of 8–10 years old, the omitting of one of the groups of Metcalf [37], resulted in a reduction of heterogeneity (MD=3.84, 95% CI: 2.81–4.87%, $p<0.0001$, $I^2=53.6\%$) (Additional file 1: Tables S1 and S2).

Sensitivity analysis indicated that the overall statistical significance did not change when any single study or several outliers were omitted. Therefore, the results of this meta-analysis are deemed to be relatively reliable and credible.

Subgroup analyses of plasma leptin levels and body fat percentage

To examine the influence of certain characteristics of the studies selected on blood leptin and body fat percentage, we carried out a subgroup analysis on the overall effect.

Considering the study design, we found that the cross-sectional studies (MD=1.94, 95% CI=1.05–2.82, $I^2=90.8\%$, $p<0.01$) showed a higher difference by sex than the cohort studies (MD=1.58, 95% CI=1.05–2.82 ng/mL, $I^2=90.8\%$, $p<0.01$). The results indicated both for the measurements of leptin by ELISA (MD=0.62 ng/mL, 95% CI=0.39–1.09 ng/mL, $I^2=58.0\%$, $p<0.01$) and RIA (MD=2.23 ng/mL, 95% CI=1.64–2.82 ng/mL, $I^2=88.9.1\%$, $p<0.01$) the girls had higher leptin. Lower ELISA values can be attributed to the fact that most of the studies that used this technique were in children under 6 years of age. The subgroup analysis by each region also showed higher leptin blood in girls in each group (Additional file 1: Table S3). Studies with high quality ($n=17$) showed that girls had higher leptin (MD=1.86 ng/mL, 95% CI=1.37–2.34 ng/mL, $I^2=86.7\%$, $p<0.01$) while the studies with low quality ($n=4$) did not show this effect (MD=0.78 ng/mL, 95% CI=– 0.21–1.77 ng/mL, $I^2=94.7\%$, $p<0.01$).

According to the design study, body fat percentage was higher in girls, with a larger effect in studies type cohort (MD=3.86%, 95% CI=2.64–5.08%, $I^2=90.5\%$, $p<0.01$) than cross-sectional (MD=2.79%, 95% CI=1.85 to 3.72, $I^2=68.1\%$, $p<0.01$). Independent of the method of measurement and geographic region, boys had lower body fat percentage, while quality assessments indicated a similar effect for adiposity in the studies with low and high quality (Additional file 1: Table S4).

Publication bias

The funnel plots were symmetrical and Eger tests were not significant ($P>0.05$), for blood leptin and body fat percentage in the groups of 6–7.9 year and 8–10 years that included ≥ 6 reports (Additional file 1: Figs. S1 and S2).

Discussion

This systematic review/meta-analysis to our knowledge is the first to describe in normal-weight children population an association of sex with blood leptin and body fat percentage before ten years old. Our analysis shows these adiposity indicators are higher in girls and that both sexes increase progressively during the first 10 years, with an apparent rate higher in the girls.

Currently, the mechanisms by which the prepubescent girls with normal-weight have higher leptin and fat than the boys remain underestimated, however, the results of some studies suggest that the early difference in sexual

(See figure on next page.)

Fig. 3 Forest plots of the effect of sex in children's normal-weight on body fat percentage between 0 and 10 years old. Forest plot showing the overall effect by age groups of newborns (A), 0.25–0.5 yrs (B), 3–5.9 yrs (C), 6–7.9 yrs (D), and 8–10 yrs (E). Results are presented as mean difference (MD) (95% CI). The study-specific MD and 95% CI are represented by the grey square and horizontal line, respectively. The centre of the blue diamond and the vertical dashed line display the estimated overall effect size of all studies; the width of the diamond represents the overall pooled 95% CI

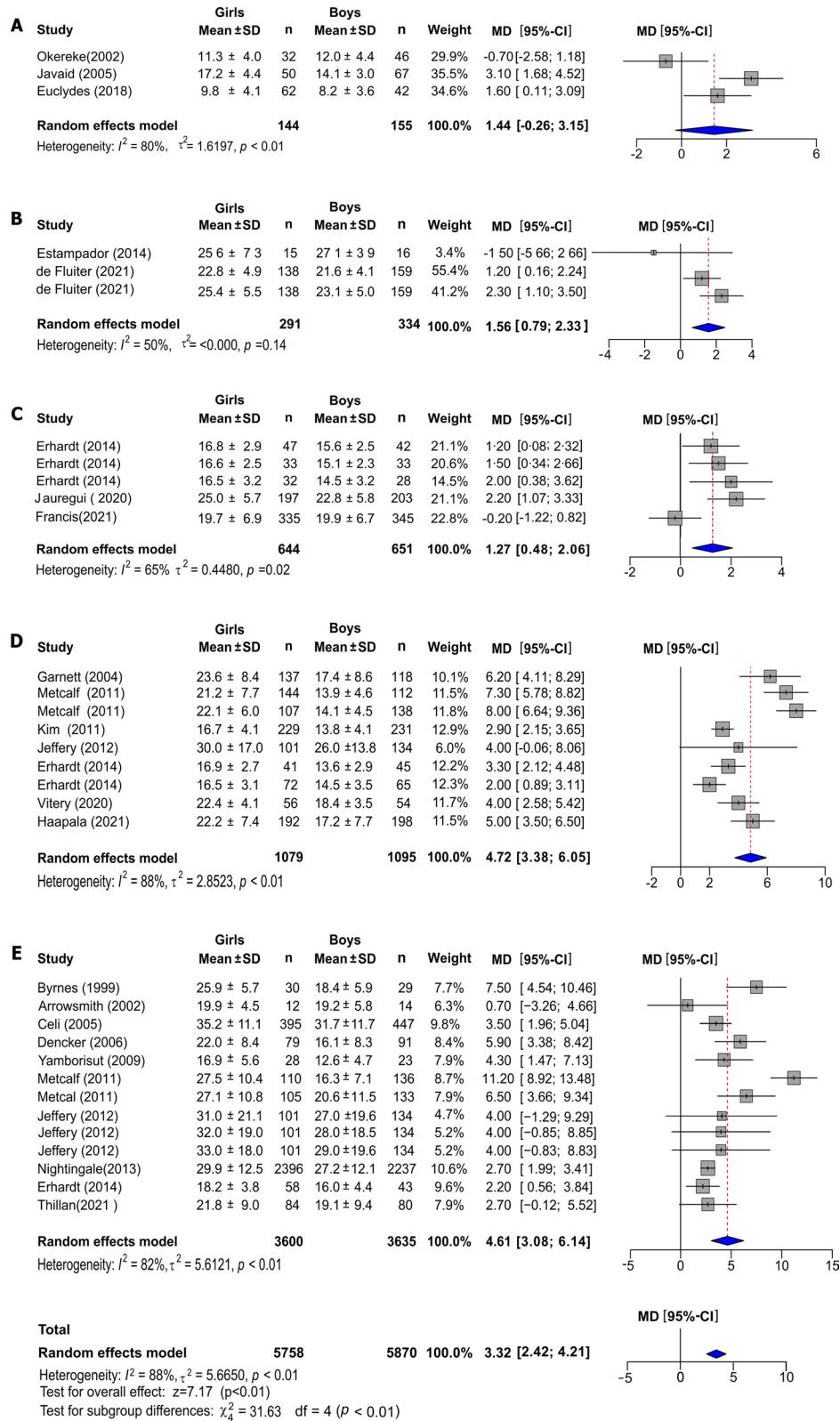


Fig. 3 (See legend on previous page.)

hormone could be implicated. The study of Garcia-Mayor et al. in Spanish children (5–15 years old) found a continuous increase in the levels of leptin in prepubertal girls of 6–10 years of age, parallel with changes in levels of FSH, without changes in the estradiol and LH hormones, however, this study did not measure the fat body in the subjects [48]. Blum et al. reported only in boys an inverse correlation between leptin with testosterone, this hormone explained about the 10% of the variation of leptin in males after adjusting by age and IBM [49]; however, this study included in the analysis population in period pubertal that can influence this association. Studies in vitro in cell culture of adipocytes and explants of adipose tissue have shown that androgen-like dihydrotestosterone, represses the transcription of the leptin gene, while low doses of estradiol stimulate abundant expression [49–51]. Therefore, it is possible that androgens in boys can reduce the level of leptin, while in girls the estrogens could increase their production.

The previous reports indicate that androgen and estrogens could be determinants to maintain the sexual dimorphism of leptin, at least during puberty and adulthood. Studies on girls and boys before 10 years old have already reported differences in levels of some androgens and estrogens. Courant et al. reported in children between 6 and 8 years old, levels of 17β -estradiol were higher in girls, while that prepubertal boys of the same age had higher levels of 17α -testosterone [52]. Frederiksen et al. found that girls between 0 and 4 years had higher levels of estrone and estradiol than boys [53]. Therefore, differences in sex steroid hormones during prepuberty could be associated with the leptin behaviour observed in both sexes in our study, although the levels of these hormones could be too low in children to explain these differences.

Among the mechanisms that could be related to higher circulating leptin in girls are epigenetic modifications that can affect gene expression. Dunstan et al. found in children of 10–15 years old, differences in leptin promoter DNA methylation (*LEP*) by sex in four sites CpG [54]. Lesueur et al. reported a significant association between sex and *LEP* methylation in the placenta, with higher methylation in males compared to females [55]. Additionally, methylation at the *LEP* promoter has shown an inverse relationship with leptin tissue expression in human cells in vitro and primary tissue [56, 57]; therefore, the contribution of this type of modification could be considered to explain the sex differences in blood leptin in children.

In adults, leptin levels have been related with sex-specific fat distribution, particularly the subcutaneous adipose tissue has been strongly associated with blood leptin and weakly with visceral fat [58, 59]. Some studies have shown that girls have more peripheral fat and less visceral fat than boys [60, 61]. The pattern of fat

accumulation in children could be related to the capacity of synthesis of leptin by the adipocytes. Nagy et al. found in children between 6 and 10 years of age that by adjusting blood leptin by body fat distribution, the leptin was no longer associated with sex, suggesting that the sexual dimorphism of this adipokine may be due to the composition body relative and the distribution of fat [62].

Leptin has been implicated in the regulation of several functions which has made the interpretation of its metabolic and physiological interactions difficult [63]. However, it has been proposed that the chronic elevation of blood leptin may be associated with altered signalling of both insulin and leptin [64, 65], dysregulation of lipid metabolism [66], blood pressure, and kidney diseases [67, 68]. Leptin exerts dichotomous and paradoxical effects on cardiovascular function, in most cases, high leptin levels correlate positively with unfavourable outcomes [69, 70], such as decreased arterial distensibility or atherosclerosis, which has been associated with macrovascular diseases, and increased risk of myocardial infarction [71]. The early dimorphism in which leptin levels are higher in girls may favour the development of alterations in its signalling and the effects [72].

It has been suggested that cardiometabolic risk in adolescence can be predicted from the trajectory of leptin during childhood [82], a trajectory with intermediate values at birth followed by an increase in mid-childhood has been associated with several risk markers [83]. The increased leptin level in mid-childhood could correspond to the fat rebound that occurs at these ages; however, the causes of this rebound are still unknown. Our results showed a greater difference in leptin levels by sex in the adipose rebound period (4 to 7 years old), which also coincides with an increase in body fat percentage [84], which is consistent with some reports indicating that girls have adipose rebound at younger ages than boys [85] and that this, in turn, is associated with a higher metabolic risk [84, 86].

Our results of body fat percentage are similar to other studies not included in this meta-analysis (did not meet the inclusion criteria) and that reported significantly higher fat mass in prepubertal girls [73–76]. Among the explanations that may support higher fat in girls is higher energy intake at younger ages (18 months) associated at older ages (9 years) with a higher fat mass in girls, while in boys with an increase in the free fat mass [77, 78]. Another finding that could be related to higher adiposity in girls, is a lower physical activity and a higher sedentary behaviour compared to boys of similar age. It has been documented in several populations around the world: Asia [79–81], Europe [82, 83], the United States [84], and Australia [85]. These studies indicate that the differences in physical activity between boys and girls

are observed at all ages, which is less marked as they are younger. The expenditure of energy associated with physical activity and the higher energy intake could contribute to explaining the differences in fat mass. Then, fat and leptin dimorphism between girls and boys, could arise as consequence of physical activity level or sedentary time. It should be mentioned that among the articles that were selected, only three studies reported physical activity levels, though without specifying by sex [33, 40, 47].

Although usually sex differences in adiposity in adulthood have been related with gonadal hormones, murine models had shown that sex chromosome complement (XX vs XY) influences body weight and adiposity independent of these hormones [86], which has been attributed to the effect of the X chromosome dosage, particularly to the subset of X chromosome genes that escape to epigenetic inactivation and that exhibit higher expression levels in adipose tissue [87]. Recently Link et al. reported an association sex-dependent dosage of gen Kdm5ct expressed in chromosome X related to higher adipogenesis in females [88]. However, it is still unknown whether these biological mechanisms contribute to early sexual dimorphism of adiposity in humans.

We found high heterogeneity of the effect of sex on leptin level and body fat percentage in some age groups, which can be related to biological factors. For instance, at birth leptin appears to be strongly influenced by maternal weight and BMI before pregnancy, as well as by other maternal variables during gestation such as diabetes, smoking, and level of physical activity [89, 90]. Leptin levels in early childhood also appear to be affected by nutritional behaviour and physical activity [91], as was mentioned above. Ethnic variations in circulating leptin and body fat percentage also have been reported in children and adulthood, even after being adjusted by IBM [92–95]. However, our analysis showed consistent results during the first 10 years of life, with higher leptin and fat in girls.

The present systematic review/meta-analysis has several strengths. Our study covered a comprehensive range of ages from birth to ten years, such as the period of rebound adipose (4–7 years old), avoiding the influence of the hormonal changes that occur at puberty. Importantly, we focused on studies with populations of normal-weight children, without the influence of conditions such as obesity or underweight. Besides, the analysis of sensibility did not show that the differences by sex were modified by factors such as the design of the study, the technique of measurement, geographical area and outlier reports. Some limitations of this research deserve to be mentioned: a high heterogeneity found among the reports selected, could be explained by the methodological characteristics and biological factors of the populations as was discussed

above. For some age groups such as newborns, 0.25 to 5 years and 3 to 5.9 years, we found few studies with small size samples, which may affect the estimation of the effect of these groups. Should also be mentioned that we did not find studies from certain regions such as Africa.

Perspectives and significance

This systematic review/meta-analysis contravenes the idea that differences in blood leptin concentration and body fat percentage begin during puberty; on the contrary, our results support that the girls present higher values of these adiposity markers than boys from prepuberty. The biological significance, mechanisms, and physiological consequences on human health of this early sexual dimorphism should be studied considering that paediatric populations are vulnerable to metabolic alterations, underweight, overweight and obesity.

The prepubertal period is a critical stage for the development of fat tissue, since it is during this period that adipose rebound occurs, a process whose early onset in children has been linked to the development of components of metabolic syndrome in childhood, adolescence, and adulthood [96–98]. Among the factors that may be related to the onset of adipose rebound are the trajectories of fat tissue and blood leptin before the rebound, these factors have not been sufficiently studied before this stage, although these trajectories in older children have been associated with the development of metabolic diseases at later stages, and these associations have been stronger when adjusted for sex [99–101]. This suggests that sexual dimorphism of fat tissue and leptin should be considered from an early age for the design and analysis of future research involving prepubertal children, which will contribute to improving knowledge, understanding and prevention of metabolic diseases from childhood.

Supplementary Information

The online version contains supplementary material available at <https://doi.org/10.1186/s13293-022-00454-y>.

Additional file 1. Additional tables and figures.

Acknowledgements

The expert technical assistance of Dr Herney García is gratefully acknowledged.

Author contributions

GO performed the meta-analysis, contributed largely to the writing of the discussion, reviewed, and edited it. AS analysed and interpreted the quality and risk of bias of the included articles. BS contributed largely to the drafting of the manuscript, reviewed, and edited the manuscript. HG drafted, adjusted, and recorded the protocol of the systematic review and meta-analysis; systematised the results of the database searches. All authors reviewed the inclusion criteria and extracted data from the included articles, drafted the results and discussion, and read and approved the final manuscript.

Funding

This research has been funded by Dirección General de Investigaciones of Universidad Santiago de Cali under call No. 01-2022.

Declarations**Ethics approval and consent to participate**

Not applicable.

Consent for publication

Not applicable.

Competing interests

The authors declare that they have no competing interests.

Author details

¹Grupo de Investigación de Ciencias Básicas y Clínicas de la Salud, Departamento de Ciencias Básicas de la Salud, Pontificia Universidad Javeriana, Seccional-Cali, Cali, Colombia. ²Grupo de investigación Salud y Movimiento, Facultad de Salud, Universidad Santiago de Cali, Cali, Colombia. ³Grupo de Nutrición, Departamento de Ciencias Fisiológicas, Facultad de Salud, Universidad del Valle, Cali, Colombia. ⁴Programa de Medicina, Facultad de Salud, Universidad Icesi, Cali, Colombia.

Received: 6 March 2022 Accepted: 20 July 2022

Published: 5 September 2022

References

- Coppack SW, Pinkney JH, Mohamed-Ali V. Leptin production in human adipose tissue. *Proc Nutr Soc.* 1998;57(3):461–70. <https://doi.org/10.1079/pns19980066>.
- Pandit R, Beerens S, Adan RAH. Role of leptin in energy expenditure: the hypothalamic perspective. *Am J Physiol Regul Integr Comp Physiol.* 2017;312:R938–47. <https://doi.org/10.1152/ajpregu.00045.2016>.
- de Candia P, de Candia P, Prattichizzo F, Garavelli S, Alviggi C, La Cava A, et al. The pleiotropic roles of leptin in metabolism, immunity, and cancer. *J Exp Med.* 2021;218(5): e20191593. <https://doi.org/10.1084/jem.20191593>.
- Katsiki N, Mikhailidis DP, Banach M. Leptin, cardiovascular diseases and type 2 diabetes mellitus. *Acta Pharmacol Sin.* 2018;39(7):1176–88. <https://doi.org/10.1038/aps.2018.40>.
- Hellström L, Wahrenberg H, Hruska K, Reynisdottir S, Arner P. Mechanisms behind gender differences in circulating leptin levels. *J Intern Med.* 2000;247:457–62. <https://doi.org/10.1046/j.1365-2796.2000.00678.x>.
- Rosenbaum M, Pietrobello A, Vasselli JR, Heymsfield SB, Leibel RL. Sexual dimorphism in circulating leptin concentrations is not accounted for by differences in adipose tissue distribution. *Int J Obes Relat Metab Disord.* 2001;25(9):1365–71. <https://doi.org/10.1038/sj.ijo.0801730>.
- Saad MF. Sexual dimorphism in plasma leptin concentration. *J Clin Endocrinol Metab.* 1997;82(2):579–84. <https://doi.org/10.1210/jc.82.2.579>.
- Cowell CT, Briody J, Lloyd-Jones S, Smith C, Moore B, Howman-Giles R. Fat distribution in children and adolescents—the influence of sex and hormones. *Horm Res.* 1997;48(Suppl 5):93–100. <https://doi.org/10.1159/000191336>.
- Mann DR, Johnson AOK, Gimpel T, Castracane VD. Changes in circulating leptin, leptin receptor, and gonadal hormones from infancy until advanced age in humans. *J Clin Endocrinol Metab.* 2003;88:3339–45. <https://doi.org/10.1210/jc.2002-022030>.
- Ahmed ML, Ong KK, Morrell DJ, Cox L, Drayer N, Perry L, Preece MA, Dunger DB. Longitudinal study of leptin concentrations during puberty: sex differences and relationship to changes in body composition. *J Clin Endocrinol Metab.* 1999;84(3):899–905. <https://doi.org/10.1210/jc.84.3.899>.
- Ellis KJ, Nicolson M. Leptin levels and body fatness in children: effects of gender, ethnicity, and sexual development. *Pediatr Res.* 1997;42:484–8. <https://doi.org/10.1203/00006450-199710000-00010>.
- Zhang M, Cheng H, Zhao X, Hou D, Yan Y, Cianflone K, et al. Leptin and leptin-to-adiponectin ratio predict adiposity gain in nonobese children over a six-year period. *Child Obes.* 2017;13:213–21. <https://doi.org/10.1089/chi.2016.0273>.
- Park JE, Choi HJ, Kim IK, Lee HJ, Kang JH, Song J. Influence of serum leptin levels on future overweight risk in Korean children. *Nutr Metab Cardiovasc Dis.* 2012;22:260–8. <https://doi.org/10.1016/j.numecd.2010.08.010>.
- Fleisch AF, Agarwal N, Roberts MD, Han JC, Theim KR, Vexler A, et al. Influence of serum leptin on weight and body fat growth in children at high risk for adult obesity. *J Clin Endocrinol Metab.* 2007;92:948–54. <https://doi.org/10.1210/jc.2006-1390>.
- Moher D, Liberati A, Tetzlaff J, Altman DG, The PRISMA Group. Preferred reporting items for systematic reviews and meta-analyses: the PRISMA statement. *PLoS Med.* 2009;6(7):e1000097. <https://doi.org/10.1371/journal.pmed.1000097>.
- Rosenfield RL, Lipton RB, Drum ML. Thelarche, pubarche, and menarche attainment in children with normal and elevated body mass index. *Pediatrics.* 2009;123:84–8. <https://doi.org/10.1542/peds.2008-0146>.
- Wells GA, Shea B, O'Connell D, Peterson J, Welch V, Losos M, et al. The Newcastle-Ottawa Scale (NOS) for assessing the quality of nonrandomized studies in meta-analyses. http://www.ohri.ca/programs/clinical_epidemiology/oxford.htm. Accessed 19 Sep 2021.
- Herzog R, Álvarez-Pasquin MJ, Díaz C, Del Barrio JL, Estrada JM, Gil Á. Are healthcare workers' intentions to vaccinate related to their knowledge, beliefs and attitudes? a systematic review. *BMC Public Health.* 2013;13:154. <https://doi.org/10.1186/1471-2458-13-154>.
- McGrath S, Zhao X, Steele R, Thombs BD, Benedetti A, DEPRESSION Screening Data (DEPRESSD) Collaboration. Estimating the sample mean and standard deviation from commonly reported quantiles in meta-analysis. *Stat Methods Med Res.* 2020. <https://doi.org/10.1177/0962280219889080>.
- Higgins JPT, Thomas J. *Cochrane handbook for systematic reviews of interventions.* John Wiley & Sons; 2019. <https://doi.org/10.1002/9781119536604>.
- Colditz GA, Brewer TF, Berkey CS, Wilson ME, Burdick E, Fineberg HV, Mosteller F. Efficacy of BCG vaccine in the prevention of tuberculosis: Meta-analysis of the published literature. *JAMA.* 1994;271(9):698–702.
- Egger M, Davey Smith G, Schneider M, Minder C. Bias in meta-analysis detected by a simple, graphical test. *BMJ.* 1997;315:629–34. <https://doi.org/10.1136/bmj.315.7109.629>.
- Tang JL, Liu JL. Misleading funnel plot for detection of bias in meta-analysis. *J Clin Epidemiol.* 2000;53:477–84. [https://doi.org/10.1016/S0895-4356\(99\)00204-8](https://doi.org/10.1016/S0895-4356(99)00204-8).
- R Core Team. *R: A language and environment for statistical computing.* Vienna: R Foundation for Statistical Computing; 2013.
- Balduzzi S, Rucker G, Schwarzer G. How to perform a meta-analysis with R: a practical tutorial. *Evid Based Ment Health.* 2019;22(4):153–60. <https://doi.org/10.1136/ebmental-2019-300117>.
- Benhalima K, De Landtsheer A, Van Crombrugge P, Moyson C, Verhaeghe J, Verlaenen H, et al. Predictors of neonatal adiposity and associations by fetal sex in women with gestational diabetes mellitus and normal glucose-tolerant women. *Acta Diabetol.* 2021;58:341–54. <https://doi.org/10.1007/s00592-020-01619-0>.
- Okereke NC, Uvena-Celebrezze J, Hutson-Presley L, Amini SB, Catalano PM. The effect of gender and gestational diabetes mellitus on cord leptin concentration. *Am J Obstet Gynecol.* 2002;187(3):798–803. <https://doi.org/10.1067/mob.2002.125887>.
- Javaid MK, Godfrey KM, Taylor P, Robinson SM, Crozier SR, Dennison EM, et al. Umbilical cord leptin predicts neonatal bone mass. *Calcif Tissue Int.* 2005;76:341–7. <https://doi.org/10.1007/s00223-004-1128-3>.
- Euclides VLV, Castro NP, Lima LR, Brito C, Ribeiro L, Simões FA, et al. Cord blood concentrations of leptin, zinc- α 2-glycoprotein, and adiponectin, and adiposity gain during the first 3 mo of life. *Nutrition.* 2018;54:89–93. <https://doi.org/10.1016/j.nut.2018.02.012>.
- Estampador AC, Pomeroy J, Renström F, Nelson SM, Mogren I, Persson M, et al. Infant body composition and adipokine concentrations in relation to maternal gestational weight gain. *Diabetes Care.* 2014;37:1432–8. <https://doi.org/10.2337/dc13-2265>.
- Fluiter KS de, de Fluiter KS, Kerkhof GF, van Beijsterveldt IALP, Breij LM, van Vark-van der Zee LC, et al. Appetite-regulating hormone trajectories

- and relationships with fat mass development in term-born infants during the first 6 months of life. *Eur J Nutr.* 2021;60(7):3717–3725. <https://doi.org/10.1007/s00394-021-02533-z>.
32. Erhardt E, Foraita R, Pigeot I, Barba G, Veidebaum T, Tornaritis M, et al. Reference values for leptin and adiponectin in children below the age of 10 based on the IDEFICS cohort. *Int J Obes.* 2014;38(Suppl 2):S32–8. <https://doi.org/10.1038/ijo.2014.133>.
 33. Jáuregui A, Salvo D, García-Olvera A, Villa U, Téllez-Rojo MM, Schnaas LM, et al. Physical activity, sedentary time and cardiometabolic health indicators among Mexican children. *Clin Obes.* 2020;10:e12346. <https://doi.org/10.1111/cob.12346>.
 34. Francis EC, Dabelea D, Shankar K, Perng W. Maternal diet quality during pregnancy is associated with biomarkers of metabolic risk among male offspring. *Diabetologia.* 2021;64:2478–90. <https://doi.org/10.1007/s00125-021-05533-0>.
 35. Garnett SP, Höglér W, Blades B, Baur LA, Peat J, Lee J, et al. Relation between hormones and body composition, including bone, in prepubertal children. *Am J Clin Nutr.* 2004;80:966–72. <https://doi.org/10.1093/ajcn.80.4.966>.
 36. Kim IK, Lee H-J, Kang JH, Song J. Relationship of serum retinol-binding protein 4 with weight status and lipid profile among Korean children and adults. *Eur J Clin Nutr.* 2011;65:226–33. <https://doi.org/10.1038/ejcn.2010.251>.
 37. Metcalf BS, Hosking J, Frémeaux AE, Jeffery AN, Voss LD, Wilkin TJ. BMI was right all along: taller children really are fatter (implications of making childhood BMI independent of height) *EarlyBird* 48. *Int J Obes.* 2011;35:541–7. <https://doi.org/10.1038/ijo.2010.258>.
 38. Jeffery AN, Metcalf BS, Hosking J, Streeter AJ, Voss LD, Wilkin TJ. Age before stage: insulin resistance rises before the onset of puberty: a 9-year longitudinal study (*EarlyBird* 26). *Diabetes Care.* 2012;35:536–41. <https://doi.org/10.2337/dc11-1281>.
 39. Vitery RJ, Ortega G, Salazar C. Leptin sexual dimorphism, insulin resistance, and body composition in normal weight prepubescent. *Rev Chil Pediatr.* 2020;91:924–9. <https://doi.org/10.32641/rchped.vi91i6.1403>.
 40. Haapala EA, Väistö J, Ihalainen JK, González CT, Leppänen MH, Veijalainen A, et al. Associations of physical activity, sedentary time, and diet quality with biomarkers of inflammation in children. *Eur J Sport Sci.* 2022;22(6):906–15. <https://doi.org/10.1080/17461391.2021.1892830>.
 41. Byrnes SE, Baur LA, Bermingham M, Brock K, Steinbeck K. Leptin and total cholesterol are predictors of weight gain in pre-pubertal children. *Int J Obes Relat Metab Disord.* 1999;23:146–50. <https://doi.org/10.1038/sj.ijo.0800783>.
 42. Arowsmith F, Ward J, Ling A, Rooney K, Baur L, Thompson C. Fetal nutrition and muscle oxygen supply in childhood. *Metabolism.* 2002;51:1569–72. <https://doi.org/10.1053/meta.2002.36300>.
 43. Celi F, Galmacci G, Bini V, Papi F, Contessa G, Falorni A. BMI-conditional standard of leptin serum values in children: proposal of a statistical procedure for the analysis of influencing variables. *J Pediatr Endocrinol Metab.* 2005;18:1399–408. <https://doi.org/10.1515/jpem.2005.18.12.1399>.
 44. Dencker M, Thorsson O, Karlsson M, Lindén C, Wollmer P, Åhrén B. Leptin is closely related to body fat in prepubertal children aged 8–11 years. *Acta Paediatr.* 2006;95(8):975–9. <https://doi.org/10.1080/08035250600570561>.
 45. Yamborisut U, Riabroy N, Phonrat B, Tungtrongchitr R. Serum leptin levels and body composition in obese Thai children. *Southeast Asian J Trop Med Public Health.* 2009;40:544–52.
 46. Nightingale CM, Rudnicka AR, Owen CG, Wells JCK, Sattar N, Cook DG, et al. Influence of adiposity on insulin resistance and glycemia markers among U.K. children of South Asian, Black African-Caribbean, and White European origin: child heart and health study in England. *Diabetes Care.* 2013. <https://doi.org/10.2337/dc12-1726>.
 47. Thillan K, Lanerolle P, Thoradeniya T, Samaranyake D, Chandrajith R, Wickramasinghe P. Micronutrient status and associated factors of adiposity in primary school children with normal and high body fat in Colombo municipal area. *Sri Lanka BMC Pediatr.* 2021;21:14. <https://doi.org/10.1186/s12887-020-02473-3>.
 48. García-Mayor RV, Andrade MA, Ríos M, Lage M, Dieguez C, Casanueva FF. Serum leptin levels in normal children: relationship to age, gender, body mass index, pituitary-gonadal hormones, and pubertal stage. *J Clin Endocrinol Metab.* 1997;82:2849–55. <https://doi.org/10.1210/jcem.82.9.4235>.
 49. Blum WF, Englaro P, Hanitsch S, Juul A, Hertel NT, Müller J, Skakkebaek NE, Heiman ML, Birkett M, Attanasio AM, Kiess W, Rascher W. Plasma leptin levels in healthy children and adolescents: dependence on body mass index, body fat mass, gender, pubertal stage, and testosterone. *J Clin Endocrinol Metab.* 1997;82(9):2904–10. <https://doi.org/10.1210/jcem.82.9.4251>.
 50. Jenks MZ, Fairfield HE, Johnson EC, Morrison RF, Muday GK. Sex steroid hormones regulate leptin transcript accumulation and protein secretion in 3T3-L1 cells. *Sci Rep.* 2017;7:8232. <https://doi.org/10.1038/s41598-017-07473-5>.
 51. Machinal F, Dieudonne MN, Leneuve MC, Pecquery R, Giudicelli Y. In vivo and in vitro ob gene expression and leptin secretion in rat adipocytes: evidence for a regional specific regulation by sex steroid hormones. *Endocrinology.* 1999;140(4):1567–74. <https://doi.org/10.1210/endo.140.4.661>.
 52. Courant F, Aksglaede L, Antignac J-P, Monteau F, Sorensen K, Andersson A-M, et al. Assessment of circulating sex steroid levels in prepubertal and pubertal boys and girls by a novel ultrasensitive gas chromatography-tandem mass spectrometry method. *J Clin Endocrinol Metab.* 2010;95(1):82–92. <https://doi.org/10.1210/jc.2009-1140>.
 53. Frederiksen H, Johannsen TH, Andersen SE, Albrethsen J, Landersøe SK, Petersen JH, et al. Sex-specific estrogen levels and reference intervals from infancy to late adulthood determined by LC-MS/MS. *J Clin Endocrinol Metab.* 2020. <https://doi.org/10.1210/clinem/dgz196>.
 54. Dunstan J, Bressler JP, Moran TH, Pollak JS, Hirsch AG, Bailey-Davis L, et al. Associations of LEP, CRH, ICAM-1, and LINE-1 methylation, measured in saliva, with waist circumference, body mass index, and percent body fat in mid-childhood. *Clin Epigenetics.* 2017;9:29. <https://doi.org/10.1186/s13148-017-0327-5>.
 55. Lesseur C, Armstrong DA, Paquette AG, Koestler DC, Padbury JF, Marsit CJ. Tissue-specific Leptin promoter DNA methylation is associated with maternal and infant perinatal factors. *Mol Cell Endocrinol.* 2013;381:160–7. <https://doi.org/10.1016/j.mce.2013.07.024>.
 56. Melzner I, Scott V, Dorsch K, Fischer P, Wabitsch M, Brüderlein S, et al. Leptin gene expression in human preadipocytes is switched on by maturation-induced demethylation of distinct CpGs in its proximal promoter. *J Biol Chem.* 2002;277:45420–7. <https://doi.org/10.1074/jbc.M208511200>.
 57. Noer A, Sørensen AL, Boquest AC, Collas P. Stable CpG hypomethylation of adipogenic promoters in freshly isolated, cultured, and differentiated mesenchymal stem cells from adipose tissue. *Mol Biol Cell.* 2006;17:3543–56. <https://doi.org/10.1091/mbc.e06-04-0322>.
 58. Konigorski S, Janke J, Drogan D, Bergmann MM, Hierholzer J, Kaaks R, et al. Prediction of circulating adipokine levels based on body fat compartments and adipose tissue gene expression. *Obes Facts.* 2019;12:590–605. <https://doi.org/10.1159/000502117>.
 59. Neeland IJ, Ayers CR, Rohatgi AK, Turer AT, Berry JD, Das SR, et al. Associations of visceral and abdominal subcutaneous adipose tissue with markers of cardiac and metabolic risk in obese adults. *Obesity.* 2013;21:E439–47. <https://doi.org/10.1002/oby.20135>.
 60. Taylor RW, Grant AM, Williams SM, Goulding A. Sex differences in regional body fat distribution from pre- to postpuberty. *Obesity.* 2010;18:1410–6. <https://doi.org/10.1038/oby.2009.399>.
 61. Ku CY, Gower BA, Nagy TR, Goran MI. Relationships between dietary fat, body fat, and serum lipid profile in prepubertal children. *Obes Res.* 1998;6:400–7. <https://doi.org/10.1002/j.1550-8528.1998.tb00371.x>.
 62. Nagy TR, Gower BA, Trowbridge CA, Dezenberg C, Shewchuk RM, Goran MI. Effects of gender, ethnicity, body composition, and fat distribution on serum leptin concentrations in children. *J Clin Endocrinol Metab.* 1997;82:2148–52. <https://doi.org/10.1210/jcem.82.7.4077>.
 63. Mechanick JI, Zhao S, Garvey WT. The adipokine-cardiovascular-lifestyle network: translation to clinical practice. *J Am Coll Cardiol.* 2016;68:1785–803. <https://doi.org/10.1016/j.jacc.2016.06.072>.
 64. Caron A, Dungan Lemko HM, Castorena CM, Fujikawa T, Lee S, Lord CC, et al. POMC neurons expressing leptin receptors coordinate metabolic responses to fasting via suppression of leptin levels. *Elife.* 2018. <https://doi.org/10.7554/eLife.33710>.
 65. Bolland E, Chen W, Tiganis T, Cowley MA. Persistent leptin signaling in the arcuate nucleus impairs hypothalamic insulin signaling

- and glucose homeostasis in obese mice. *Neuroendocrinology*. 2019;109:374–90. <https://doi.org/10.1159/000500201>.
66. Iqbal J, Mascareno E, Chua S, Hussain MM. Leptin-mediated differential regulation of microsomal triglyceride transfer protein in the intestine and liver affects plasma lipids. *J Biol Chem*. 2020;295:4101–13. <https://doi.org/10.1074/jbc.RA119.011881>.
 67. Smith W, Schutte R, Huisman HW, Van Rooyen JM, Ware LJ, Fourie CM, Mels CM, Kruger R, McCarthy N, Schutte AE. Leptin is positively associated with blood pressure in African men with a low body mass index: the SAfrEIC study. *Horm Metab Res*. 2015;47(2):145–51. <https://doi.org/10.1055/s-0034-1389926>.
 68. Zhu Q, Scherer PE. Immunologic and endocrine functions of adipose tissue: implications for kidney disease. *Nat Rev Nephrol*. 2018;14:105–20. <https://doi.org/10.1038/nrneph.2017.157>.
 69. Ren J. Leptin and hyperleptinemia—from friend to foe for cardiovascular function. *J Endocrinol*. 2004;181:1–10. <https://doi.org/10.1677/joe.0.1810001>.
 70. Martínez-Martínez E, Jurado-López R, Cervantes-Escalera P, Cachofeiro V, Miana M. Leptin, a mediator of cardiac damage associated with obesity. *Horm Mol Biol Clin Invest*. 2014;18:3–14. <https://doi.org/10.1515/hmbci-2013-0060>.
 71. Windham BG, Griswold ME, Farasat SM, Ling SM, Carlson O, Egan JM, et al. Influence of leptin, adiponectin, and resistin on the association between abdominal adiposity and arterial stiffness. *Am J Hypertens*. 2010;23:501–7. <https://doi.org/10.1038/ajh.2010.8>.
 72. Zouhar P, Rakipovski G, Bokhari MH, Busby O, Paulsson JF, Conde-Frieboes KW, et al. UCP1-independent glucose-lowering effect of leptin in type 1 diabetes: only in conditions of hypoleptinemia. *Am J Physiol Endocrinol Metab*. 2020;318:E72–86. <https://doi.org/10.1152/ajpendo.00253.2019>.
 73. Dencker M, Thorsson O, Lindén C, Wollmer P, Andersen LB, Karlsson MK. BMI and objectively measured body fat and body fat distribution in prepubertal children. *Clin Physiol Funct Imaging*. 2007;27:12–6. <https://doi.org/10.1111/j.1475-097X.2007.00709.x>.
 74. He Q, Horlick M, Thornton J, Wang J, Pierson RN Jr, Heshka S, et al. Sex and race differences in fat distribution among Asian, African-American, and Caucasian prepubertal children. *J Clin Endocrinol Metab*. 2002;87:2164–70. <https://doi.org/10.1210/jcem.87.5.8452>.
 75. Arfai K, Pitukcheewanont PD, Goran MI, Tavares CJ, Heller L, Gilsanz V. Bone, muscle, and fat: sex-related differences in prepubertal children. *Radiology*. 2002;224:338–44. <https://doi.org/10.1148/radiol.2242011369>.
 76. Mast M, Körtzinger I, König E, Müller MJ. Gender differences in fat mass of 5–7-year old children. *Int J Obes Relat Metab Disord*. 1998;22(9):878–84. <https://doi.org/10.1038/sj.ijo.0800675>.
 77. Ruxton CH, Reilly JJ, Kirk TR. Body composition of healthy 7- and 8-year-old children and a comparison with the “reference child.” *Int J Obes Relat Metab Disord*. 1999;23:1276–81. <https://doi.org/10.1038/sj.ijo.0801067>.
 78. Park H, Park K, Kim MH, Kim GS, Chung S. Gender differences in relationship between fat-free mass index and fat mass index among Korean children using body composition chart. *Yonsei Med J*. 2011;52:948–52. <https://doi.org/10.3349/ymj.2011.52.6.948>.
 79. Ishii K, Shibata A, Adachi M, Nonoue K, Oka K. Gender and grade differences in objectively measured physical activity and sedentary behavior patterns among Japanese children and adolescents: a cross-sectional study. *BMC Public Health*. 2015;15:1254. <https://doi.org/10.1186/s12889-015-2607-3>.
 80. Zimmo L, Farooq A, Almudahka F, Ibrahim I, Al-Kuwari MG. School-time physical activity among Arab elementary school children in Qatar. *BMC Pediatr*. 2017;17:76. <https://doi.org/10.1186/s12887-017-0832-x>.
 81. Yin N, Yu X, Wang F, Yu Y, Wen J, Guo D, et al. Self-reported sedentary behavior and metabolic syndrome among children aged 6–14 years in Beijing, China. *Nutrients*. 2022. <https://doi.org/10.3390/nu14091869>.
 82. van Stralen MM, Yildirim M, Wulp A, te Velde SJ, Verloigne M, Doessegger A, et al. Measured sedentary time and physical activity during the school day of European 10- to 12-year-old children: The ENERGY project. *J Sci Med Sport*. 2014;17:201–6. <https://doi.org/10.1016/j.jsams.2013.04.019>.
 83. Tobias JH, Steer CD, Mattocks CG, Riddoch C, Ness AR. Habitual levels of physical activity influence bone mass in 11-year-old children from the United Kingdom: findings from a large population-based cohort. *J Bone Miner Res*. 2007;22:101–9. <https://doi.org/10.1359/jbmr.060913>.
 84. Kwon S, Janz KF, Burns TL, Levy SM. Effects of adiposity on physical activity in childhood: Iowa Bone Development Study. *Med Sci Sports Exerc*. 2011;43:443–8. <https://doi.org/10.1249/MSS.0b013e3181ef3b0a>.
 85. Olds T, Maher CA, Ridley K. The place of physical activity in the time budgets of 10- to 13-year-old Australian children. *J Phys Act Health*. 2011;8:548–57. <https://doi.org/10.1123/jpah.8.4.548>.
 86. Chen X, McClusky R, Itoh Y, Reue K, Arnold AP. X and Y chromosome complement influence adiposity and metabolism in mice. *Endocrinology*. 2013;154:1092–104. <https://doi.org/10.1210/en.2012-2098>.
 87. Chen X, McClusky R, Chen J, Beaven SW, Tontonoz P, Arnold AP, et al. The number of x chromosomes causes sex differences in adiposity in mice. *PLoS Genet*. 2012;8:e1002709. <https://doi.org/10.1371/journal.pgen.1002709>.
 88. Link JC, Wiese CB, Chen X, Avetisyan R, Ronquillo E, Ma F, et al. X chromosome dosage of histone demethylase KDM5C determines sex differences in adiposity. *Clin Invest*. 2020;130(11):5688–702. <https://doi.org/10.1172/jci140223>.
 89. Lesseur C, Armstrong DA, Paquette AG, Li Z, Padbury JF, Marsit CJ. Maternal obesity and gestational diabetes are associated with placental leptin DNA methylation. *Am J Obstet Gynecol*. 2014;211(654):e1–9. <https://doi.org/10.1016/j.ajog.2014.06.037>.
 90. Blais K, Arguin M, Allard C, Doyon M, Dolinsky VW, Bouchard L, et al. Maternal glucose in pregnancy is associated with child's adiposity and leptin at 5 years of age. *Pediatr Obes*. 2021;16:e12788. <https://doi.org/10.1111/ijpo.12788>.
 91. Pejsova H, Hubacek JA, Zemankova P, Zlatohlavek L. Baseline leptin/adiponectin ratio is a significant predictor of BMI changes in children/adolescents after intensive lifestyle intervention. *Exp Clin Endocrinol Diabetes*. 2019;127:691–6. <https://doi.org/10.1055/a-0859-7041>.
 92. Mente A, Razak F, Blankenberg S, Vuksan V, Davis AD, Miller R, et al. Ethnic variation in adiponectin and leptin levels and their association with adiposity and insulin resistance. *Diabetes Care*. 2010;33:1629–34. <https://doi.org/10.2337/dc09-1392>.
 93. Morimoto Y, Conroy SM, Ollberding NJ, Kim Y, Lim U, Cooney RV, et al. Ethnic differences in serum adipokine and C-reactive protein levels: the multiethnic cohort. *Int J Obes*. 2014;38:1416–22. <https://doi.org/10.1038/ijo.2014.25>.
 94. Moore SE, Falorni A, Bini V, Fulford AJC, O'Connell MA, Prentice AM. Ethnic differences in the relationship between fasting leptin and BMI in children. *Int J Obes Relat Metab Disord*. 2004;28:17–21. <https://doi.org/10.1038/sj.ijo.0802484>.
 95. Staiano AE, Broyles ST, Gupta AK, Katzmarzyk PT. Ethnic and sex differences in visceral, subcutaneous, and total body fat in children and adolescents. *Obesity*. 2013;21:1251–5. <https://doi.org/10.1002/oby.20210>.
 96. González L, Corvalán C, Pereira A, Kain J, Garmendia ML, Uauy R. Early adiposity rebound is associated with metabolic risk in 7-year-old children. *Int J Obes*. 2014;38:1299–304. <https://doi.org/10.1038/ijo.2014.97>.
 97. Koyama S, Ichikawa G, Kojima M, Shimura N, Sairenchi T, Arisaka O. Adiposity rebound and the development of metabolic syndrome. *Pediatrics*. 2014;133:e114–9. <https://doi.org/10.1542/peds.2013-0966>.
 98. Péneau S, González-Carrascosa R, Gusto G, Goxe D, Lantieri O, Fezeu L, et al. Age at adiposity rebound: determinants and association with nutritional status and the metabolic syndrome at adulthood. *Int J Obes*. 2016;40:1150–6. <https://doi.org/10.1038/ijo.2016.39>.
 99. Volberg V, Heggseth B, Harley K, Huen K, Yousefi P, Davé V, et al. Adiponectin and leptin trajectories in Mexican-American children from birth to 9 years of age. *PLoS ONE*. 2013;8:e77964. <https://doi.org/10.1371/journal.pone.0077964>.
 100. Koletzko B. Leptin and adiponectin serum levels from infancy to school age: factors influencing tracking. *Child Obes*. 2016;12(3):179–87. <https://doi.org/10.1089/chi.2015.0245>.
 101. Li L-J, Rifas-Shiman SL, Aris IM, Mantzoros C, Hivert M-F, Oken E. Leptin trajectories from birth to mid-childhood and cardio-metabolic health in early adolescence. *Metabolism*. 2019;91:30–8. <https://doi.org/10.1016/j.metabol.2018.11.003>.

Publisher's Note

Springer Nature remains neutral with regard to jurisdictional claims in published maps and institutional affiliations.