



RESEARCH ARTICLE

Open Access

Bacteriophages as antimicrobial agents against bacterial contaminants in yeast fermentation processes

Juliano Bertozzi Silva and Dominic Sauvageau*

Abstract

Background: The emergence of biofuels produced through yeast fermentation represents an important avenue for sustainable energy production. Despite all its advantages, this process is vulnerable to contamination by other organisms – most commonly lactic acid bacteria – that are present in raw feedstocks and/or in production lines. These contaminants compete with the yeast for nutrients, reducing the overall biofuel yield, and release substances that inhibit yeast growth. Here, we investigated the application of bacteriophages as potential antibacterial agents in yeast fermentation.

Results: Experiments conducted to understand the impact of pH on yeast, bacterial, and phage development showed that the yeast *Saccharomyces cerevisiae* Superstart™ grew in a similar fashion at pH levels ranging from 3 to 6. Growth of *Lactobacillus plantarum* ATCC® 8014™ was inhibited by pH levels of less than 4, and phages ATCC® 8014-B1™ (phage B1) and ATCC® 8014-B2™ (phage B2) displayed different infectivities within the pH range tested (pH 3.5 to 7). Phage B1 showed the best infectivity at pH 6, while phage B2 was most virulent at pH levels ranging from 4 to 5, and the cocktail of these phages showed highest infectivity in the range from pH 4 to 6. Population dynamics studies in MRS medium at pH 6 showed that, in the presence of bacteria inoculated at 10^7 cells/ml, yeast cultures were impeded under aerobic and anaerobic conditions, showing major decreases in both cell yield and ethanol production. The addition of the phage cocktail at a low initial multiplicity of infection was sufficient to reduce contamination by over 99%, and to allow yeast and ethanol yields to reach values equivalent to those of axenic cultures.

Conclusions: From the results observed, phages are good candidates as antimicrobial agents, to be used in place of or in conjunction with antibiotics, in yeast fermentation processes. Their implementation with other common contamination abatement/prevention methods could further increase their efficacy.

Keywords: Bacteriophage, Yeast, Lactic acid bacteria, Contamination abatement, Ethanol, Biofuel, Antibacterial

Background

Yeast fermentation has been extensively used by humans for millennia to intentionally synthesize various useful products such as foods, beverages, and chemicals [1,2]. In recent decades, there has been much research into the application of yeasts for the production of biofuels, with the emphasis on ethanol. Biofuels are considered an important player in the energy field because of their

environmental appeal, particularly their production from renewable sources [3,4].

A common impediment to many yeast fermentations is the presence of undesirable contaminant microorganisms, mainly bacteria and wild yeasts [5]. The presence of such undesirable organisms in fermentations is a consequence of their natural occurrence in the agricultural raw materials that compose many mash feedstocks, and their prevalence in industrial facilities [6,7]. These contaminants compete for nutrients with the fermenting yeasts, and may release substances, such as organic acids, that can inhibit yeast growth [8]. Consequently,

* Correspondence: dominic.sauvageau@ualberta.ca
Department of Chemical and Materials Engineering, University of Alberta,
Electrical & Computer Engineering Research Facility (ECERF), 7th Floor,
9107-116 Street NW, Edmonton, Alberta T6G 2V4, Canada

the fermenting yeasts do not thrive and lower ethanol yields are often obtained [9].

The majority of contaminants found in industrial plants are lactic acid bacteria (LAB) [10-14]. These are aero-tolerant anaerobic, Gram-positive bacteria that can be further divided into two groups – homofermenters and heterofermenters – depending on their products of glucose metabolism [15-17].

Several methods are used, often in conjunction, to eliminate or, at least, abate contaminants. These include heat treatment, cleaning and sanitation, reduction of the pH of the feedstock, and addition of antibiotics [7]. Each of these approaches has advantages and disadvantages. Antibiotics are advantageous for acting selectively against bacteria, without exhibiting detrimental effects on the fermenting yeasts. However, application of antibiotics, even for non-therapeutic purposes, is known to facilitate the emergence of resistant bacterial strains [18]. Concerns arising from increased bacterial antibiotic resistance include reduction in the effectiveness of the applied antibiotic, and public health issues caused by the presence of residual amounts of antibiotics in fermentation co-products used as feed for livestock (for example, distillers' dried grains with solubles (DDGS)) [10,19]. As a result, regulations imposing antibiotic-free feedstocks are phasing out the usage of these antimicrobials, especially in Europe [7]. There is thus an increasing drive to find alternatives to antibiotics in yeast fermentation processes, and the number of studies in this area of research is also increasing [20-25].

In the present work, the application of strictly lytic bacteriophages (hereafter referred to as 'phages') was investigated for the reduction of bacterial contaminants in yeast fermentation processes. Phages are viruses whose hosts are bacteria and archaea [26]. They are ubiquitous, and compose the most numerous and diverse population of biological entities on Earth [27]. In addition, many are capable of rapidly replicating to high numbers at the expense of their host cell. The application of phages as antibacterial agents has mostly revolved around the replacement of antibiotics in therapeutic purposes (phage therapy) [28,29], but work has also been carried out to develop applications in non-therapeutic systems [30].

The concept of utilizing phages to control contamination in ethanol production has been briefly mentioned in the literature [7] and has been the subject of two patent applications [31,32]. However, to our knowledge, no systematic studies to establish a comprehensive understanding of their use in yeast fermentations have been reported thus far. In the present study, we aimed to establish preliminary parameters for the application of phages as a stand-alone or a complementary technology for the control and abatement of bacterial contamination in yeast fermentation processes.

Results

Impact of pH on growth and infection under aerobic conditions

Growth and infection experiments were conducted with yeasts, bacteria, and phages in M9 medium at different initial pH levels to assess the behavior of the cultures and to define phage infectivity. Figures 1 and 2 show the growth of yeasts and bacteria, respectively, under different initial pH conditions. The yeast strain used for the study grew similarly under all conditions tested, but lower initial pH led to lower final bacterial counts (Figure 2). Also of note, a longer lag phase was observed for bacterial cultures growing at an initial pH of 7. This is because pH 7 is not optimal for the growth of this *Lactobacillus* species [33]. The initial slow growth of the culture produced organic acids that lowered the pH of the medium to an extent that allowed faster growth afterwards, and this was corroborated by the maximum growth rate being similar to that of other cultures. However, despite the longer lag phase, it should be noted that the final yield was highest when the initial pH was 7.

Figure 3 demonstrates the growth of the bacterial host when infected by phage B1 (Figure 3a), phage B2 (3b), and the cocktail of phages B1 and B2 (3c) at different initial pH levels. Comparisons of these infected cultures with uninfected host cultures (Figure 2) at the same respective initial pH were conducted to assess phage infectivity. To this end, the integral of each curve in Figure 3 was calculated and subtracted from the integral of the curve of the corresponding uninfected culture (Figure 2). As these integrals indicate bacterial proliferation over the length of infection, the resulting differences in areas represent a quantitative measure of cell-time reduction caused by the phages. This, in turn, indicates how infective a phage is under the conditions tested. Phage infectivity for phages B1 and B2 alone and in combination is shown in Figure 4.

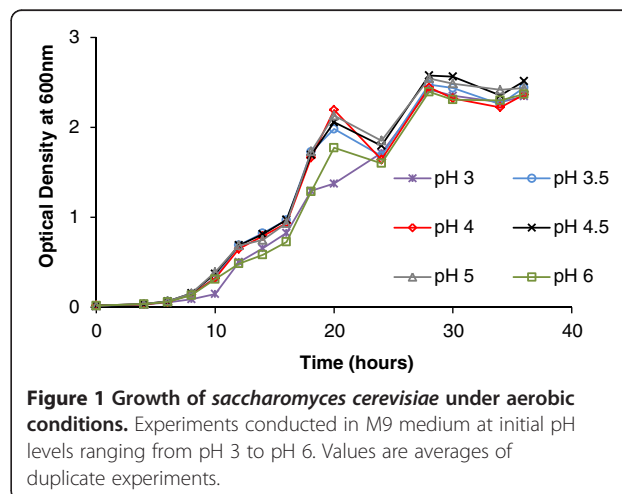


Figure 1 Growth of *saccharomyces cerevisiae* under aerobic conditions. Experiments conducted in M9 medium at initial pH levels ranging from pH 3 to pH 6. Values are averages of duplicate experiments.

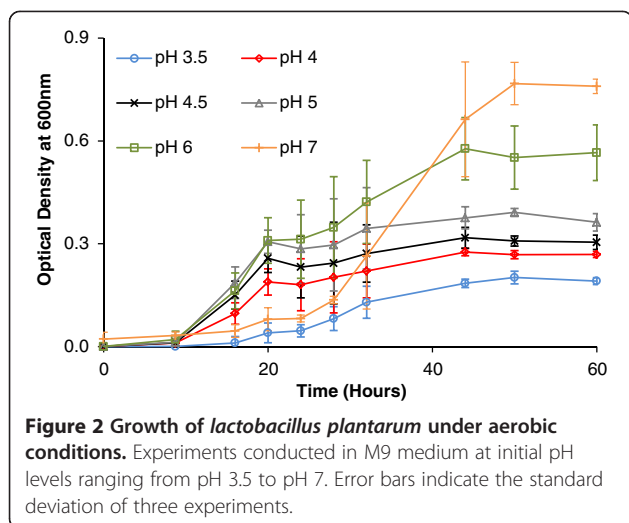
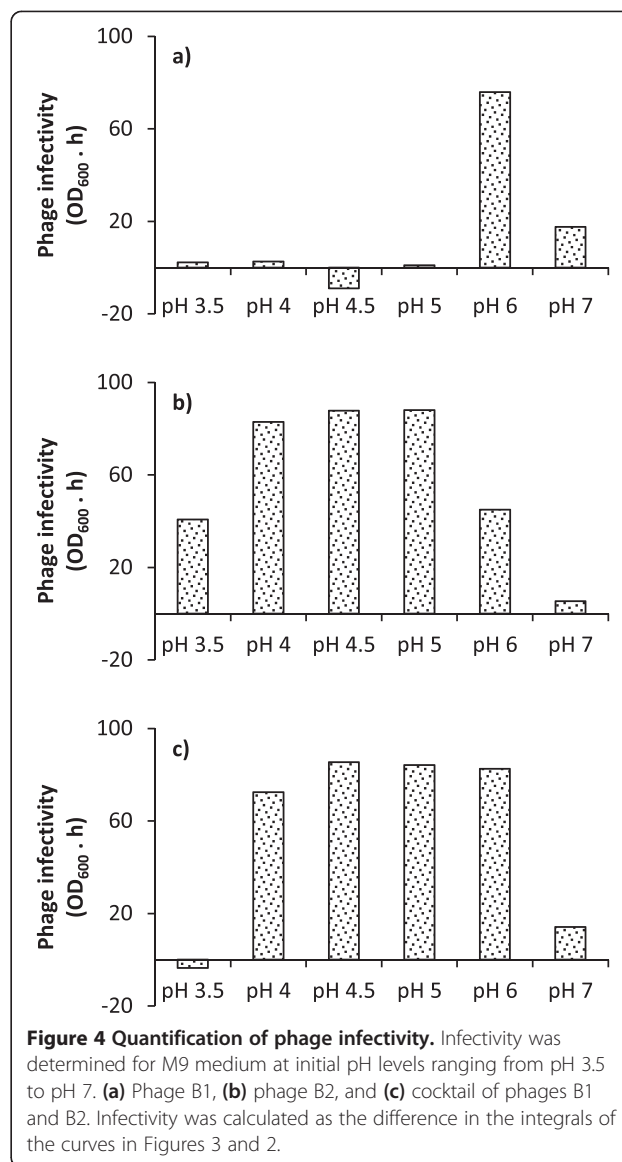
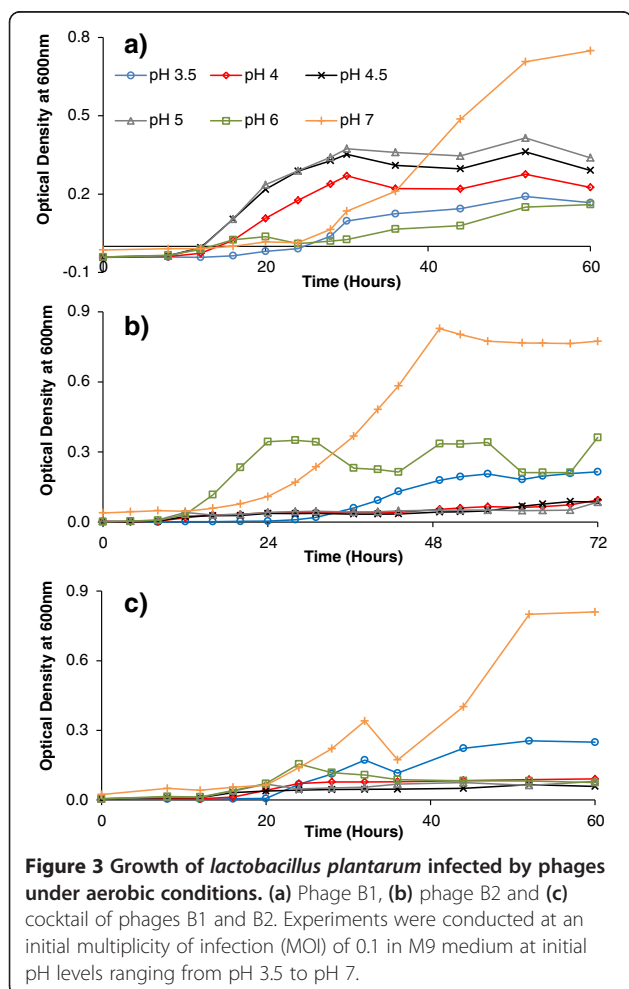


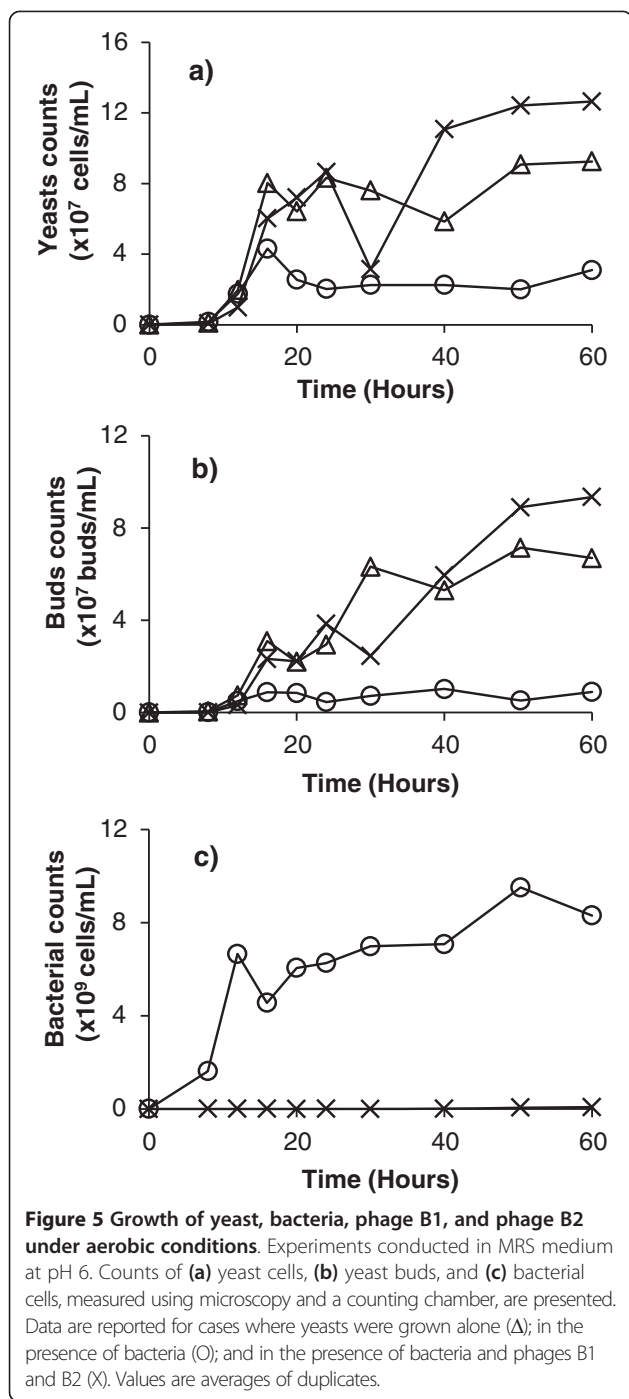
Figure 4 it can be observed that phage B1 had high infectivity at pH 6 (Figure 4a), phage B2 was most virulent from pH 4 to pH 5 (Figure 4b), and the infectivity of both phages combined was high and consistent in the pH range of 4 to 6 (Figure 4c). The slightly negative values of



infectivity, observed for phage B1 at pH 4.5 (Figure 4a) and for the cocktail of phages at pH 3.5 (Figure 4c) (-8.9% and -3.6%, respectively) were a result of experimental error.

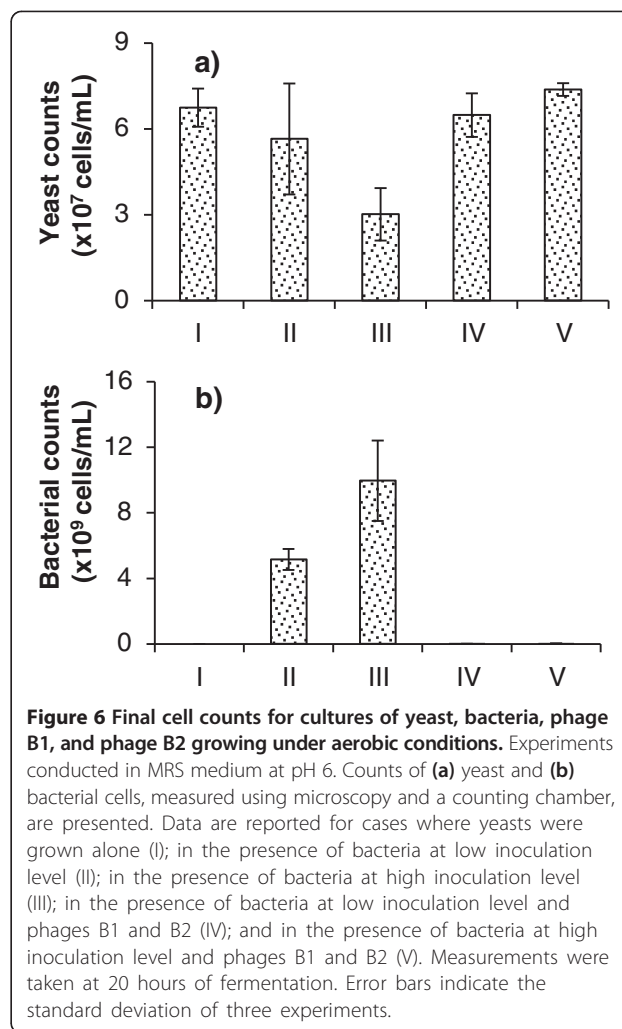
Population dynamics of yeasts, bacteria, and phages B1 and B2

Figures 5 and 6 contain the results for population dynamics in MRS at pH 6 under aerobic conditions. These figures clearly show major reductions in yeast cell counts in the presence of bacteria (Figure 5a; Figure 6a, cases II and III). Additionally, significant reduction (over 99%) in bacterial cell counts was observed when phages were added (Figure 5c; Figure 6b, cases IV and V). The addition of phages allowed yeast cells to reach the same levels as axenic yeast cultures (Figure 5a; Figure 6a, cases I, IV and V).



Sample pictures of cases I, III and V from Figure 6 can be seen in Figure 7, where the impact of the presence of phages on the yeast and bacterial populations can be observed.

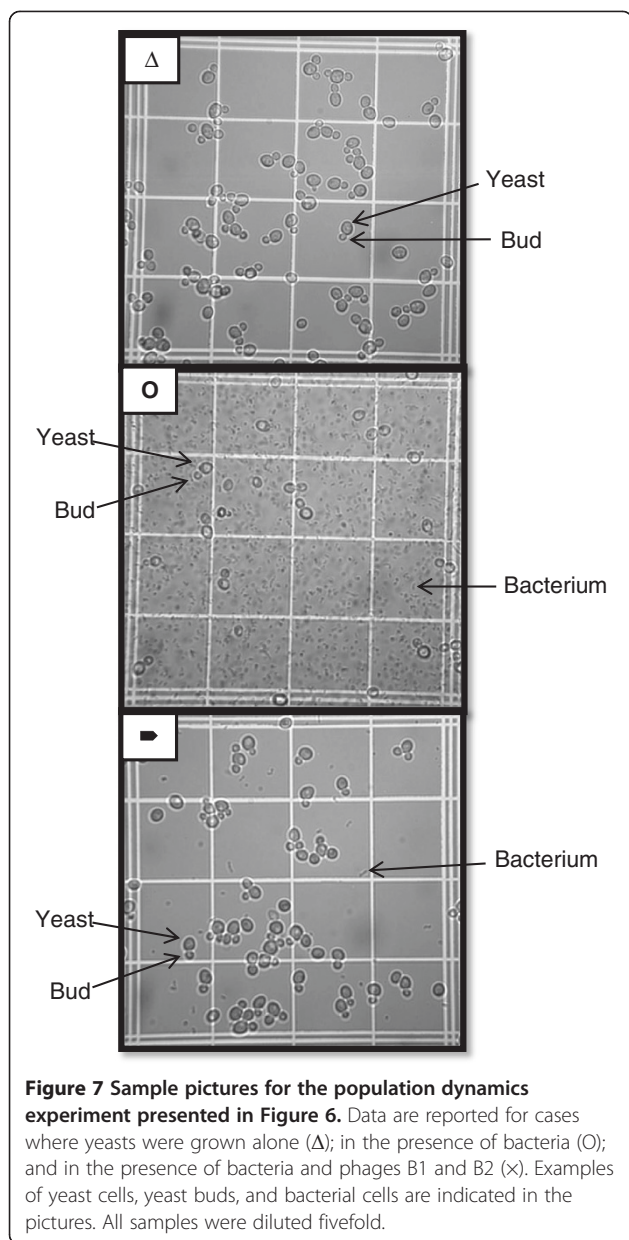
Figure 8 shows results for yeast and bacterial population yields under anaerobic conditions and without agitation. Again, in the presence of bacterial contaminants, the yeast yield was significantly reduced, whereas the addition of



phages to the cultures led to reduction in bacterial cell counts and significant recovery in yeast cell counts.

Ethanol production

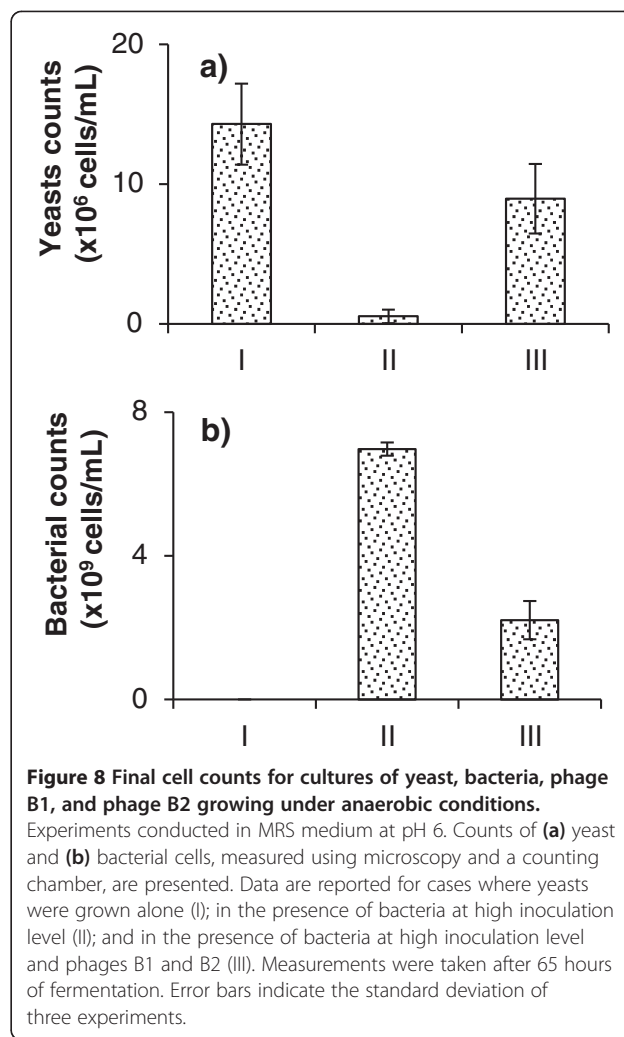
Although ethanol production is generally considered to correlate with yeast growth [34], it is important to evaluate if and how ethanol is affected by the presence of bacteria and phages. Ethanol concentration was measured from experiments performed in MRS medium at pH 6 under aerobic and anaerobic conditions. In preliminary experiments, the production of ethanol by axenic yeast cultures under aerobic conditions was found to reach the highest level at 24 hours, whereas the highest production under anaerobic conditions occurred at 65 hours (data not shown). Figure 9 shows the results for ethanol production (% v/v) at these respective optima. The presence of bacterial contaminants significantly reduced ethanol production to less than 0.4% (v/v) under aerobic conditions and below the detection limit under anaerobic conditions. In both cases, the presence of phages allowed



significant recovery in ethanol production, even reaching a statistically equal concentration to that of axenic cultures under aerobic conditions.

Discussion

LAB, besides being the major group of contaminants in bioethanol fermentation, are commonly used as starter cultures for the production of dairy, meat, vegetable, and probiotic products [35]. Ironically, LAB fermentation faces the constant deleterious issue of contamination by phages [36]. According to Watanabe *et al.* [37], controlling phage contamination is even more difficult than controlling bacterial contamination. The

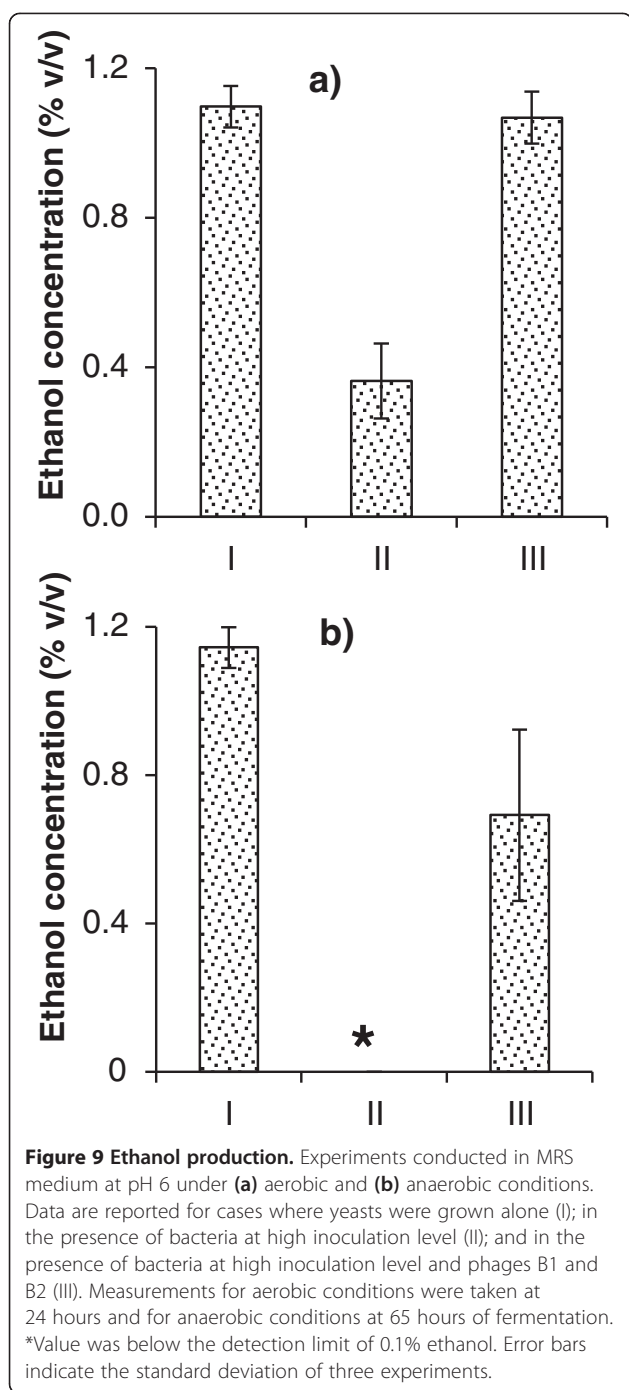


goal of the present research was to take advantage of the spread of phage infection in LAB fermentation processes to reduce contamination and improve biofuel yield in yeast fermentation processes.

Impact of pH on cultures and infections under aerobic conditions

pH is a parameter with major influence on the growth and productivity of organisms. Reduction of the pH of mash feedstock is a common measure to control contamination; however, because pH values lower than the optimal range for *S. cerevisiae* (pH 5.0 to 5.5) are often used, this can also have a negative impact by affecting both the yield of yeast cells and the ethanol production [7,38,39].

The industrial yeast used in the present study grew similarly over a wide range of pH levels (Figure 1). This pattern reflects the ability of commercial strains to grow efficiently in a pH range from 3.5 to 6 [40]. However, it must be noted that the experiment was carried out aerobically. Under aerobic conditions, *S. cerevisiae* is able



to produce 28 molecules of ATP per molecule of glucose, whereas only 2 molecules are produced under anaerobic fermentation [40,41]. Because yeasts waste ATP molecules to pump dissociated hydrogen out of the cell [42], it can be inferred that aerobic conditions allow the yeast to produce enough energy to exclude the H⁺ ions and grow similarly under all pH conditions tested.

The oscillation in optical density observed at approximately 24 hours of fermentation (Figure 1) is likely to be

caused by secondary consumption of ethanol produced through the Crabtree effect, which implies that some ethanol is produced under aerobic conditions [43]. It has been reported that, in some cases, *S. cerevisiae* can metabolize this ethanol once all the glucose has been depleted [44,45]. This is consistent with the ensuing increase in optical density observed after 24 hours. In fact, oscillation in yeast development is well known in bioethanol industries.

The pattern for *L. plantarum* growth was different, as expected (Figure 2). Bacteria can use various mechanisms to survive in a medium at non-optimal pH; these vary from exchanging ions for protons with an antiport transport system to synthesizing a variety of proteins [46]. Such mechanisms require energy and probably affect cell yield.

The infectivity of phages was shown to be affected by pH conditions in the medium (Figure 3; Figure 4). This phenomenon was more drastic for phage B1 infections (Figure 3a; Figure 4a), whose infectivity was radically lower at pH values other than pH 6. By contrast, phage B2 was effective over a broader pH range, from 3.5 to 6 (Figure 3b; Figure 4b), with the highest infectivity within the range of pH 4 to 5. For the cocktail of the two phages (Figure 3c; Figure 4c), the infectivity was compounded, remaining high at pH levels ranging from 4 to 6.

Although further investigation is needed to identify the actual infection mechanisms affected by pH in this system, the results from a study conducted by Briggiler Marcó *et al.* [47] on the influence of physiological and environmental factors on the development of phages B1 and B2 can provide clues to the phenomena observed in the present study. Briggiler Marcó *et al.* showed a major reduction in phage B1 infectivity at pH levels lower than 4, due to phage inactivation, whereas in the present study a sharp decrease was observed at pH 5 and below (Figure 3a; Figure 4a). The most probable explanation for the discrepancy in the pH values causing the drastic reduction in infectivity is the difference in experimental conditions (medium and temperature). Reduction in phage infectivity can be caused by changes either in the adsorption process or in the physiological state of the host. Since Briggiler Marcó *et al.* did not notice any reduction in adsorption at pH 5 to pH 7, it could be inferred that change in host development is the most plausible cause for the loss of infectivity. However, it is important to note that ion content and phage stability, which are both factors that influence phage adsorption, differ for different media. The results for phage B2 (Figure 3b; Figure 4b) are in closer agreement with those of Briggiler Marcó *et al.* The main difference is the reduction in infectivity at pH 6 and pH 7 observed in the present study. The former investigation did not find any alteration in infectivity or adsorption over this pH range. Again, changes in adsorption or bacterial physiological state may account for this difference in infectivity, due to the experimental differences in temperature and medium.

Population dynamics of yeasts, bacteria, and phages B1 and B2

The population dynamics study was conducted in MRS medium at pH 6 under different conditions of aeration, agitation, and bacterial inoculation load (Figure 5; Figure 6; Figure 7; Figure 8). MRS medium [48] was chosen, as it is an appropriate medium for the growth of lactobacillus and for the infection by phages. Yeasts also thrived in this medium. In addition, MRS is a complex medium and thus more closely resembles the industrial mashes used in yeast fermentation for biofuel production, compared with some other synthetic media. Despite this, MRS medium differs from mashes or molasses in several aspects, including sugar content and particulate matter, which could affect infectivity

Yeast cultures growing aerobically in the presence of bacteria at low inoculation load (10^5 cells/ml) showed a small and statistically non-significant decrease in cell yield in comparison with the axenic culture (Figure 6a, cases I and II). At a bacterial inoculation load of 10^7 cells/ml, the impact of the presence of contaminants was more obvious, and the decrease in yeast cell counts was significant (Figure 5a; Figure 6a, cases I and III). With both low and high bacterial inoculation loads, introducing a cocktail of phages at an initial multiplicity of infection (MOI) of 0.1 led to significant reductions in bacterial cell counts (more than 99%) (Figure 5c; Figure 6b), and yeast cell counts reached the same levels as axenic yeast cultures (Figure 5a; Figure 6a, cases I, IV and V).

Under anaerobic conditions, bacterial contamination at high inoculation levels also led to significant reduction in yeast yield (Figure 8). The addition of phages lowered bacterial cell counts by more than 65%, and allowed yeast yield to reach 63% of the values for axenic cultures. It should be noted that yeast cell counts in anaerobic experiments were lower than those in aerobic cultures. This phenomenon was observed in all cases: in axenic cultures, in the presence of bacteria, and in the presence of bacteria and phages. Limited agitation and, consequently, limited access to nutrients affected yeast growth in anaerobic cultures. Likewise, phages virulence was reduced in anaerobic experiments. The lack of aeration and/or agitation could have contributed to this phenomenon [49–51]. Lower aeration led to slower bacterial growth and, in turn, to lower burst size (the number of phages released per infected bacterium). In the case of agitation, mass transfer limitation impeded phage adsorption and propagation. Despite this reduction in infectivity under the anaerobic conditions tested, the presence of phages greatly and positively affected yeast cell yield (Figure 8).

Ethanol production

The production of biofuel by yeasts was also evaluated. Under aerobic conditions, a major reduction (67%) in ethanol concentration was observed when bacteria were

competing with yeasts (Figure 9a). When phages were added to the system, ethanol production reached equivalent levels to when yeasts were growing alone. As previously discussed, measurements were taken at 24 hours of fermentation. After this time, the glucose was depleted and the yeast started to consume ethanol.

Similar results were obtained under anaerobic conditions (Figure 9b). No ethanol was detected in the presence of contaminants. The addition of phages allowed considerable recovery of ethanol production (60% of the axenic control). Similar to the yeast cell counts under anaerobic conditions (Figure 8), ethanol concentration in the presence of contaminants and phages remained lower than that in the axenic yeast cultures. This phenomenon reinforces the high correlation existent between yeast cell yield and ethanol production. The explanations for this lower recovery of ethanol production under anaerobic condition are the same as for the yeast cell yield.

The average ethanol yield in these experiments did not surpass 1.2% (v/v). Although this is lower than industrial production levels, it falls within the expected range based on the comparatively low amount of glucose present in the medium used (around 20 g/l or 0.11 mol/l). As the reaction converts one molecule of glucose into two molecules of ethanol, full conversion would result in 0.22 mol/l of ethanol. Approximately 10% of the substrate is used by the yeast for metabolism and multiplication, hence a conversion to ethanol of 90% can be expected [34]. This corresponds to a production of 0.2 mol/l, or 1.17% (v/v) of ethanol, in accordance with the experimental results obtained.

Feasibility of using phage cocktails as antimicrobial agents in yeast fermentation

These results show the efficacy of using even a simple phage cocktail in an array of conditions. The fact that bacterial cultures inoculated at 10^7 cells/ml – two orders of magnitude greater than initial contamination levels normally observed in industrial context – were neutralized by phages to such an extent that they did not or only minimally impeded yeast counts and ethanol yields shows the potential of this strategy.

However, questions may be raised regarding the feasibility of using phages as antimicrobial agents in fermentation processes. Five main arguments should be addressed: 1) phage specificity versus diversity of contaminant strains, 2) potential rise of bacterial resistance, 3) range of conditions under which phages can be used, 4) concerns related to the presence of phages in co-products, and 5) cost of production/addition of phage compared to antibiotics. Undoubtedly, more research is needed to address these points fully, but a few insights can be considered currently. 1) Although the variety of contaminants in ethanol fermentation is extensive, it is important to note that the investigations

conducted on the identification of these bacteria had a significant number of species in common [10-14]. Moreover, the majority of these contaminants are LAB, hence it can be expected that a single cocktail of phages developed against several LAB species would be effective in a variety of industries in different locations. 2) The emergence of resistance against phages, as against antibiotics, may occur. However, a substantial advantage of phages is that they have the capacity and need to not only multiply rapidly, but also evolve in order to overcome host resistance [52]. In addition, in order to impede resistance, an effective cocktail should be composed of multiple phages against the same bacterial strains, as in the present study. 3) Certainly, more investigation into the optimal conditions for phage application should be carried out to provide comprehensive knowledge on this topic; however the variety of assessments conducted in the present study (including pH, aeration, and agitation) is a starting point for similar studies. Moreover, different phages will exhibit different properties under different ranges of conditions. 4) The presence of active phages in co-products is unlikely, mostly because downstream processes, especially distillation and drying of the distillers' grains, are sufficient to deactivate or destroy the phages. Even so, the natural ubiquity of phages renders their unlikely presence in by-products less of an issue than with, for example, more potent antibiotics. That being said, the release of large amounts of untreated, active phages in the environment or in the diet of animals could have unexpected impacts on ecosystems and should therefore be treated with caution. 5) Although a complete comparative economic study of the use of phages in lieu of antibiotics in yeast fermentations is yet to be performed, it can be assumed, based on the low costs of production, that phages will be economically appealing. In contrast to antibiotic production, phages are easily amplified and reach high titers rapidly. Moreover, the purification and concentration of phage stocks are typically less costly than those of antibiotics.

Lastly, while the medium used here was not a common industrial substrate (molasses or hydrolyzate), the present study, which is the first investigation of population dynamics for yeast/bacteria/phage systems, is still of relevance to the industrial context. The selection of the tested medium (MRS) was based on the facts that it is a complex medium and that it favors the growth of the bacterial contaminant, and can thus be seen as an extreme case of contamination propagation. These results are encouraging for further studies investigating the application of phages for controlling contaminants in industrial media.

Conclusions

The present work demonstrated that phages show great potential as antibacterial agents for use in industrial yeast

fermentation processes. The use of a simple phage cocktail significantly reduced the impact of *L. plantarum* contamination on the yeast and ethanol yields of a robust commercial *S. cerevisiae* strain. Yeast yield and ethanol production were found to be equal to those of axenic yeast cultures grown under aerobic conditions, and slightly lower under anaerobic conditions without agitation.

Methods

Microorganisms and culture media

The organisms utilized in this study were the yeast *Saccharomyces cerevisiae* Superstart™ (Lallemand Biofuels and Distilled Spirits, Montreal, Canada), the bacterium *Lactobacillus plantarum* ATCC® 8014™ and the bacteriophages *Lactobacillus plantarum* ATCC® 8014-B1™ (phage B1) and *Lactobacillus plantarum* ATCC® 8014-B2™ (phage B2).

MRS medium (BD Difco™ lactobacilli broth, Sparks, MD, USA) and M9 minimal medium (7.54 g/l NaH₂PO₄, 3.33 g/l KH₂PO₄, 1.11 g/l NH₄Cl, 0.56 g/l NaCl, 0.546 g/l MgSO₄ · 7H₂O, 0.016 g/l CaCl₂ · 2H₂O, 1.11 g/l of yeast extract, and 2 g/l of glucose) were used for the study. The pH of the media was adjusted to the desired value (from pH 3 to pH 7) with solutions of 1 N HCl and 1 M NaOH.

Bottom and soft agars were prepared by the addition of 1.5% and 0.75% agar (BD Difco, Sparks, MD, USA) in MRS broth, respectively. Bottom agar was immediately poured into petri dishes, while soft agar was kept in a water bath at 60°C prior to cell addition and pouring.

Cells growth measurements

Cell growth (yeasts and bacteria) was monitored by measuring optical density at 600 nm (OD₆₀₀) using a spectrophotometer (Ultrospec 50; Biochrom, Cambridge, UK); by counting the number of cells in a counting chamber (Improved Neubauer Brightline; Hausser Scientific, Horsham, PA, USA) and a microscope (DMRXA2; Leica Microsystems, Heerbrugg, Switzerland) equipped with a digital camera (Retiga EX; QImaging, Surrey, BC, USA); and by the plate count dilution method [53], with colony-forming units (CFU) counted on bottom agar incubated overnight at 30°C.

Phage titer

Phage titer measurements were performed using the agar layering technique [54]. For this, 10 µl (or 2 µl for phage B2) of a bacterial host overnight culture were added to 3 ml of MRS soft agar. The mixture was then poured onto a layer of bottom agar and allowed to solidify for 5 minutes. Dilutions of phage samples were placed on the soft agar, dried, and incubated overnight at 30°C (or 37°C for phage B2). The titer, in plaque forming units (PFU)/mL, was calculated by counting plaques of phages after incubation.

Aerobic and anaerobic conditions

All aerobic experiments were conducted in 125 ml shake flasks capped with foam stoppers, which were incubated at 30°C with shaking at 150 rpm in a rotary incubator shaker (Ecotron; Infors HT, Bottmingen, Switzerland).

Anaerobic experiments were carried out without agitation in culture bottles, with a capacity of 130 mL, filled with 120 ml of medium. The bottles were sealed to avoid gaseous exchange with the surroundings. Because some oxygen was initially present in the medium and in the headspace of the culture bottles, the conditions were not strictly anaerobic; however, anaerobic conditions were achieved once the dissolved oxygen was consumed by the organisms. These anaerobic experiments simulated typical fermentation conditions encountered in industry.

Impact of pH on cultures and infections under aerobic conditions

All experiments to evaluate pH effects on organisms were performed aerobically at 30°C with shaking at 150 rpm. OD₆₀₀ measurements were taken periodically.

For experiments with yeast, shake flasks with 25 ml of M9 medium at pH 3, 3.5, 4, 4.5, 5, or 6 were used. The flasks were inoculated with 100 µl of an exponentially growing culture. Two replicates were performed for each experiment.

For the bacteria, M9 at pH 3.5, 4, 4.5, 5, 6, or 7 was used. For these experiments, 20 ml of medium were added to shake flasks and were inoculated with 200 µl of exponentially growing cultures diluted to 10⁷ CFU/mL. Three replicates were performed for each experiment.

Tests involving phages B1 and B2 were carried out in shake flasks with 25 ml of M9 at pH 3.5, 4, 4.5, 5, 6, or 7. Exponentially growing bacteria diluted to 10⁷ CFU/ml were mixed in a microcentrifuge tube with phages at an MOI of 0.1, followed by adsorption (resting) for 5 minutes before 250 µl of the mixture were added to the shake flasks. One replicate was performed for each experiment.

Inoculation loads for population dynamics studies

Cultures of yeasts and bacteria in the late exponential phase and phage stocks were used as inocula in the experiments. In all cases, the cultures were added to shake flasks to initial concentrations of 10⁴ cells/ml for yeasts, and 10⁵ or 10⁷ cells/ml for bacteria (low and high contamination levels, respectively). Phages were added to obtain an MOI of 0.1. The inoculation load of yeasts followed the recommendation of the yeast manufacturer. The lowest bacterial inoculation level (10⁵ cells/mL) simulates typical contamination concentrations found in industry at the beginning of fermentations [12-14],

whereas the highest bacterial inoculation level exemplifies an extreme case of contamination. The MOI of 0.1 for phage infections was maintained for single phage strains (B1 or B2) and for the cocktail of these phages (B1 at MOI of 0.05 and B2 at MOI of 0.05, combined to give MOI of 0.1).

Population dynamics of yeasts, bacteria, and phages B1 and B2

Population dynamics studies were performed in MRS medium at pH 6 under aerobic and anaerobic conditions. The aerobic experiments were conducted in shake flasks containing 25 ml of medium, and were divided in two, one to have a single measurement after 20 hours of fermentation and the other to have periodic measurements throughout 60 hours of fermentation. High or low bacterial inoculations were added, as appropriate, and the experiments were conducted in triplicate and duplicate, respectively. All anaerobic experiments were carried out in triplicate.

Ethanol production

In experiments without phages, 1 ml culture samples were transferred into microcentrifuge tubes and centrifuged (5424R centrifuge, FA-45-24-11 rotor; Eppendorf Hamburg, Germany) for 1 minute at 14,000 × g and 25°C. When samples contained phages, centrifugation was carried for 90 minutes at 20,000 × g and 25°C to remove phages prior to analysis. Samples were filtered (0.2 µm; Fisher Scientific, Windsor, ON, Canada) and the ethanol content was measured by high performance liquid chromatography (Agilent Technologies 1200 series, SupelcoGel Pb carbohydrate column; 7.8 mm internal diameter and 30 cm length, with guard column and refractive index detector). Sample injection volume for measurement was 10 µl, and the elution flow rate was 0.5 ml/min with deionized sterile water (MilliQ; MilliPore, Etobicoke, ON, Canada). Measurements were performed in triplicate.

Statistical analysis

Variance and *t*-test analyses, with 95% confidence level ($P < 0.05$), were conducted for comparison of averages of triplicates.

Abbreviations

ATCC: American Type Culture Collection; CFU: Colony forming units; LAB: Lactic acid bacteria; MOI: Multiplicity of infection; PFU: Plaque forming units.

Competing interests

The authors declare no competing interests related to this work.

Authors' contributions

JBS designed, performed, and analyzed the experiments, and wrote the manuscript. DS designed experiments, supervised, and wrote, proofread and made corrections to the manuscript. Both authors read and approved the final manuscript.

Acknowledgments

We thank Adam Grochowalski, Dr Michael Gänzle and Dr Natalia Semagina for highly useful discussions on this research, and Lallemand Inc. for providing the commercial yeast utilized in this study. Funding was kindly provided by the University of Alberta Faculty of Engineering start-up funds.

Received: 25 January 2014 Accepted: 5 August 2014

Published: 20 August 2014

References

- Johnson EA, Echavarrri-Erasun C: **Yeast biotechnology**. In *The Yeasts - A Taxonomic Study*, Volume 1. 5th edition. Edited by Kurtzman CP, Fell JW, Boekhout T. London: Elsevier B.V; 2011:21–44.
- McGovern PE, Hartung U, Badler VR, Glusker DL, Exner LJ: **The beginnings of winemaking and viticulture in the ancient Near East and Egypt**. *Expedition* 1997, **39**(Suppl 1):3–21.
- Pilgrim C: **Status of the worldwide fuel alcohol industry**. In *The Alcohol Textbook – A Reference for the Beverage, Fuel and Industrial Alcohol Industries*. 5th edition. Edited by Ingledew WM, Kelsall DR, Austin GD, Kluhsbies C. Nottingham: Nottingham University Press; 2009:7–17.
- Wyman CE: **Cellulosic ethanol: a unique sustainable liquid transportation fuel**. *MRS Bull* 2008, **33**(Suppl 4):381–383.
- Ingledew WM, Austin GD, Kelsall DR, Kluhsbies C: **The alcohol industry: How has it changed and matured?** In *The Alcohol Textbook – A Reference for the Beverage, Fuel and Industrial Alcohol Industries*. 5th edition. Edited by Ingledew WM, Kelsall DR, Austin GD, Kluhsbies C. Nottingham: Nottingham University Press; 2009:1–6.
- Chen Y-S, Yanagida F, Shinohara T: **Isolation and identification of lactic acid bacteria from soil using an enrichment procedure**. *Lett Appl Microbiol* 2005, **40**:195–200.
- Narendranath NV, Brey S: **Bacterial contamination and control**. In *The Alcohol Textbook – A Reference for the Beverage, Fuel and Industrial Alcohol Industries*. 5th edition. Edited by Ingledew WM, Kelsall DR, Austin GD, Kluhsbies C. Nottingham: Nottingham University Press; 2009:337–356.
- Narendranath NV, Thomas KC, Ingledew WM: **Effects of acetic and lactic acid on the growth of *Saccharomyces cerevisiae* in a minimal medium**. *J Ind Microbiol Biotechnol* 2001, **26**:171–177.
- Narendranath NV, Hynes SH, Thomas KC, Ingledew WM: **Effects of lactobacilli on yeast-catalyzed ethanol fermentations**. *Appl Environ Microbiol* 1997, **63**(Suppl 11):4158–4163.
- Bischoff KM, Skinner-Nemec KA, Leathers TD: **Antimicrobial susceptibility of *Lactobacillus* species isolated from commercial ethanol plants**. *J Ind Microbiol Biotechnol* 2007, **34**:739–744.
- de Carvalho-Netto OV, Dias Rosa D, Aranha Camargo LE: **Identification of contaminant bacteria in cachaça yeast by 16S rDNA gene sequencing**. *Sci Agric* 2008, **65**(Suppl 5):508–515.
- Leja K, Broda M: **The occurrence and identification of microbiological contamination in fuel ethanol production**. *Acta Sci Pol Technol Aliment* 2009, **8**(Suppl 4):25–31.
- Skinner KA, Leathers TD: **Bacterial contaminants of fuel ethanol production**. *J Ind Microbiol Biotechnol* 2004, **31**:401–408.
- Sossa Urrego DP, González LM, Vanegas MC: **Isolation and identification of contaminant *Lactobacillus* in a Colombian alcohol fermentation plant**. *Rev UDCA Act Div Cient* 2009, **12**(Suppl 2):163–172.
- Azhar Ali A: **Beneficial role of lactic acid bacteria in food preservation and human health: a review**. *Res J Microbiol* 2010, **5**(Suppl 12):1213–1221.
- Carr FJ, Chill D, Maida N: **The lactic acid bacteria: a literature survey**. *Crit Rev Microbiol* 2002, **28**(Suppl 4):281–370.
- Madigan MT, Martinko JM, Stahl DA, Clark DP: *Brock Biology of Microorganisms*. 13th edition. San Francisco: Benjamin Cummings; 2012.
- Silbergeld EK, Graham J, Price LB: **Industrial food animal production, antimicrobial resistance, and human health**. *Annu Rev Public Health* 2008, **29**:151–169.
- Ensley S: **Biofuels am products tolerance and toxicology for ruminants**. *Vet Clin North Am Food Anim Pract* 2011, **27**(Suppl 2):297–303.
- Chang IS, Kim BH, Shin PK: **Use of sulfite and hydrogen peroxide to control bacterial contamination in ethanol fermentation**. *Appl Environ Microbiol* 1997, **63**(Suppl 1):1–6.
- Leite IR, Faria JR, Marquez LDS, Reis MHM, de Resende MM, Ribeiro EJ, Cardoso VL: **Evaluation of hop extract as a natural antibacterial agent in contaminated fuel ethanol fermentations**. *Fuel Process Technol* 2013, **106**:611–618.
- Limayem A, Hanning IB, Muthaiyan A, Illegheems K, Kim J-W, Crandall PG, O'Bryan CA, Ricke SC: **Alternative antimicrobial compounds to control potential *Lactobacillus* contamination in bioethanol fermentations**. *J Environ Sci Health Part B* 2011, **46**:709–714.
- Muthaiyan A, Limayem A, Ricke SC: **Antimicrobial strategies for limiting bacterial contaminants in fuel bioethanol fermentations**. *Prog Energy Combust* 2011, **37**:351–370.
- Peng J, Zhang L, Gu Z-H, Ding Z-Y, Shi G-Y: **The role of nisin in fuel ethanol production with *Saccharomyces cerevisiae***. *Lett Appl Microbiol* 2012, **55**:128–134.
- Roach DR, Khatibi PA, Bischoff KM, Hughes SR, Donovan DM: **Bacteriophage-encoded lytic enzymes control growth of contaminating *Lactobacillus* found in fuel ethanol fermentations**. *Biotechnol Biofuels* 2013, **6**:20.
- Ackermann H-W: **5500 phages examined in the electron microscope**. *Arch Virol* 2007, **152**:227–243.
- Brüssow H, Kutter E: **Phage ecology**. In *Bacteriophages: Biology and Applications*. Edited by Kutter E, Sulakvelidze A. Boca Raton: CRC Press; 2005. Chapter 6.
- Brüssow H: **What is needed for phage therapy to become a reality in Western medicine?** *Virology* 2012, **434**:138–142.
- Housby JN, Mann NH: **Phage therapy**. *Drug Discov Today* 2009, **14**(Suppl 11/12):536–540.
- Sulakvelidze A, Barrow P: **Phage therapy in animals and agribusiness**. In *Bacteriophages: Biology and Applications*. Edited by Kutter E, Sulakvelidze A. Boca Raton: CRC Press; 2005. Chapter 13.
- Bayrock DP: **Viral-based Antimicrobial Agent Use in Ethanol Production**, US patent application publication 2010/0330041 A1; 2010.
- Solomon EB, Okull D: **Utilization of Bacteriophage to Control Bacterial Contamination in Fermentation Processes**, US patent application publication 2009/0104157 A1; 2009.
- Giraud E, Lelong B, Raimbault M: **Influence of pH and initial lactate concentration on the growth of *Lactobacillus plantarum***. *Appl Microbiol Biotechnol* 1991, **36**:96–99.
- Ingledew WM: **Yeasts: Physiology, nutrition and ethanol production**. In *The Alcohol Textbook – A Reference for the Beverage, Fuel and Industrial Alcohol Industries*. 5th edition. Edited by Ingledew WM, Kelsall DR, Austin GD, Kluhsbies C. Nottingham: Nottingham University Press; 2009:101–113.
- Adams MR, Moss MO: *Food Microbiology*. 3rd edition. Cambridge: The Royal Society of Chemistry; 2008.
- Moineau S, Lévesque C: **Control of bacteriophages in industrial fermentations**. In *Bacteriophages: Biology and Applications*. Edited by Kutter E, Sulakvelidze A. Boca Raton: CRC Press; 2005. Chapter 10.
- Watanabe K, Takesue S, Jin-Nai K, Yoshikawa T: **Bacteriophage active against the lactic acid beverage-producing bacterium *Lactobacillus casei***. *Appl Microbiol* 1970, **20**(Suppl 3):409–415.
- Graves T, Narendranath NV, Dawson K, Power R: **Effect of pH and lactic or acetic acid on ethanol productivity by *Saccharomyces cerevisiae* in corn mash**. *J Ind Microbiol Biotechnol* 2006, **33**:469–474.
- Narendranath NV, Power R: **Relationship between pH and medium dissolved solids in terms of growth and metabolism of lactobacilli and *Saccharomyces cerevisiae* during ethanol production**. *Appl Environ Microbiol* 2005, **71**(Suppl 5):2239–2243.
- Russell I: **Understanding yeast fundamentals**. In *The Alcohol Textbook – A Reference for the Beverage, Fuel and Industrial Alcohol Industries*. 4th edition. Edited by Jacques KA, Lyons TP, Kelsall DR. Nottingham: Nottingham University Press; 2003:86–119.
- Lin SJ, Kaerberlein M, Andalis AA, Sturtz LA, Defossez PA, Culotta VC, Fink GR, Guarente L: **Calorie restriction extends *Saccharomyces cerevisiae* lifespan by increasing respiration**. *Nature* 2002, **418**:344–348.
- Ingledew WM: **Yeast stress in the fermentation process**. In *The Alcohol Textbook – A Reference for the Beverage, Fuel and Industrial Alcohol Industries*. 5th edition. Edited by Ingledew WM, Kelsall DR, Austin GD, Kluhsbies C. Nottingham: Nottingham University Press; 2009:115–126.
- van Dijken JP, Weusthuis RA, Pronk JT: **Kinetics of growth and sugar consumption in yeasts**. *Antonie Van Leeuwenhoek* 1993, **63**:343–352.
- Mohammed Al-mhanna NM: **Observation of Crabtree effect and diauxic behaviour of yeast by using absorption**. *Chem Eng Trans* 2010, **21**:1465–1470.
- Ramon-Portugal F, Pingaud H, Strehaiano P: **Metabolic transition step from ethanol consumption to sugar/ethanol consumption by *Saccharomyces cerevisiae***. *Biotechnol Lett* 2004, **26**:1671–1674.

46. Willey JM, Sherwood LM, Woolverton CJ: *Prescott, Harley, & Klein's Microbiology*. 7th edition. New York: The McGraw-Hill Companies; 2008.
47. Briggiler Marcó M, Reinheimer JA, Quiberoni A: **Phage adsorption to *Lactobacillus plantarum*: Influence of physiological and environmental factors**. *Int J Food Microbiol* 2010, **138**:270–275.
48. de Man JC, Rogosa M, Sharpe ME: **A medium for the cultivation of lactobacilli**. *J Appl Bacteriol* 1960, **23**(Suppl 1):130–135.
49. Howes WV: **Effect of glucose on the capacity of *Escherichia coli* to be infected by a virulent λ bacteriophage**. *J Bacteriol* 1965, **90**(Suppl 5):1188–1193.
50. Koch AL: **Encounter efficiency of coliphage-bacterium interaction**. *Biochim Biophys Acta* 1960, **39**:311–318.
51. Tanji Y, Shimada T, Fukudomi H, Miyanaga K, Nakai Y, Unno H: **Therapeutic use of phage cocktail for controlling *Escherichia coli* 0157:H7 in gastrointestinal tract of mice**. *J Biosci Bioeng* 2005, **100**(Suppl 3):280–287.
52. Brockhurst MA, Morgan AD, Fenton A, Buckling A: **Experimental coevolution with bacteria and phage. The *Pseudomonas fluorescens* – ϕ 2 model system**. *Infect Genet Evol* 2007, **7**:547–552.
53. Harisha S: *Biotechnology Procedures and Experiments Handbook*. Hingham, MA: Infinity Science Press; 2007.
54. Storms ZJ, Arsenault E, Sauvageau D, Cooper DG: **Bacteriophage adsorption efficiency and its effect on amplification**. *Bioprocess Biosyst Eng* 2010, **33**:823–831.

doi:10.1186/s13068-014-0123-9

Cite this article as: Bertozzi Silva and Sauvageau: **Bacteriophages as antimicrobial agents against bacterial contaminants in yeast fermentation processes**. *Biotechnology for Biofuels* 2014 **7**:123.

Submit your next manuscript to BioMed Central and take full advantage of:

- Convenient online submission
- Thorough peer review
- No space constraints or color figure charges
- Immediate publication on acceptance
- Inclusion in PubMed, CAS, Scopus and Google Scholar
- Research which is freely available for redistribution

Submit your manuscript at
www.biomedcentral.com/submit

