


STUDY PROTOCOL

Open Access



Cognitive-motor telerehabilitation in multiple sclerosis (CoMoTeMS): study protocol for a randomised controlled trial

Delphine Van Laethem^{1,2*} , Frederik Van de Steen^{1,3}, Daphne Kos^{4,5}, Maarten Naeyaert⁶, Peter Van Schuerbeek⁶, Miguel D'Haeseleer^{7,8,9}, Marie B. D'Hooghe^{7,9}, Jeroen Van Schependom^{1,6,10} and Guy Nagels^{1,8,11}

Abstract

Background: The management of cognitive impairment is an important goal in the treatment of multiple sclerosis (MS). While cognitive rehabilitation has been proven to be effective in improving cognitive performance in MS, research in the elderly indicates a higher effectiveness of combined cognitive-motor rehabilitation. Here, we present the protocol of a randomised controlled clinical trial to assess whether a combined cognitive-motor telerehabilitation programme is more effective in improving working memory than only cognitive or motor training.

Methods/design: The CoMoTeMS-trial is a two-centre, randomised, controlled and blinded clinical trial. A total of 90 patients with MS will receive 12 weeks of either a combined cognitive-motor telerehabilitation programme or only cognitive or motor training. The primary outcome is a change in the digit span backwards. Secondary outcomes are other cognitive changes (Brief International Cognitive Assessment for Multiple Sclerosis and Backward Corsi), Expanded Disability Status Scale (EDSS), 6-Min Walk Test, 25-Foot Walk Test, 9-Hole Peg Test, anxiety and depression, fatigue, quality of life, cognitive and physical activity level, electroencephalography and magnetic resonance imaging of the brain.

Discussion: We hypothesise that the improvement in digit span backwards after 12 weeks of treatment will be significantly higher in the group treated with the combined cognitive-motor telerehabilitation programme, compared to the groups receiving only cognitive and only motor training.

Trial registration: ClinicalTrials.gov NCT05355389. Registered on 2 May 2022.

Keywords: Cognition, Multiple sclerosis, Rehabilitation, Cognitive rehabilitation, Cognitive-motor rehabilitation, Telerehabilitation, Randomised controlled trial

Introduction

Multiple sclerosis (MS) is the most common inflammatory and neurodegenerative disease in young adults, affecting more than two million people worldwide [1],

and between 34 and 65% of the persons with multiple sclerosis (PwMS) suffer from cognitive impairment (CI) [2]. CI in MS has a substantial, often detrimental effect on numerous aspects of daily life [3–5]. Its management is an important gap in the treatment of MS [6]. Cognitive rehabilitation is the most promising treatment strategy [6], with recent meta-analyses finding conclusive evidence that both cognitive rehabilitation interventions in general and

*Correspondence: delphine.van.laethem@vub.be

¹ AIMS Lab, Center For Neurosciences, UZ Brussel, Vrije Universiteit Brussel, Pleinlaan 2, 1050 Brussel, Belgium
Full list of author information is available at the end of the article



© The Author(s) 2022. **Open Access** This article is licensed under a Creative Commons Attribution 4.0 International License, which permits use, sharing, adaptation, distribution and reproduction in any medium or format, as long as you give appropriate credit to the original author(s) and the source, provide a link to the Creative Commons licence, and indicate if changes were made. The images or other third party material in this article are included in the article's Creative Commons licence, unless indicated otherwise in a credit line to the material. If material is not included in the article's Creative Commons licence and your intended use is not permitted by statutory regulation or exceeds the permitted use, you will need to obtain permission directly from the copyright holder. To view a copy of this licence, visit <http://creativecommons.org/licenses/by/4.0/>. The Creative Commons Public Domain Dedication waiver (<http://creativecommons.org/publicdomain/zero/1.0/>) applies to the data made available in this article, unless otherwise stated in a credit line to the data.

memory rehabilitation improve objective cognitive performance [7–9]. However, many challenges remain that hamper implementation into daily practice; studies with larger sample sizes, inclusion of patients with progressive disease, assessment of the effects on daily life and long-term follow-up data are still lacking [6].

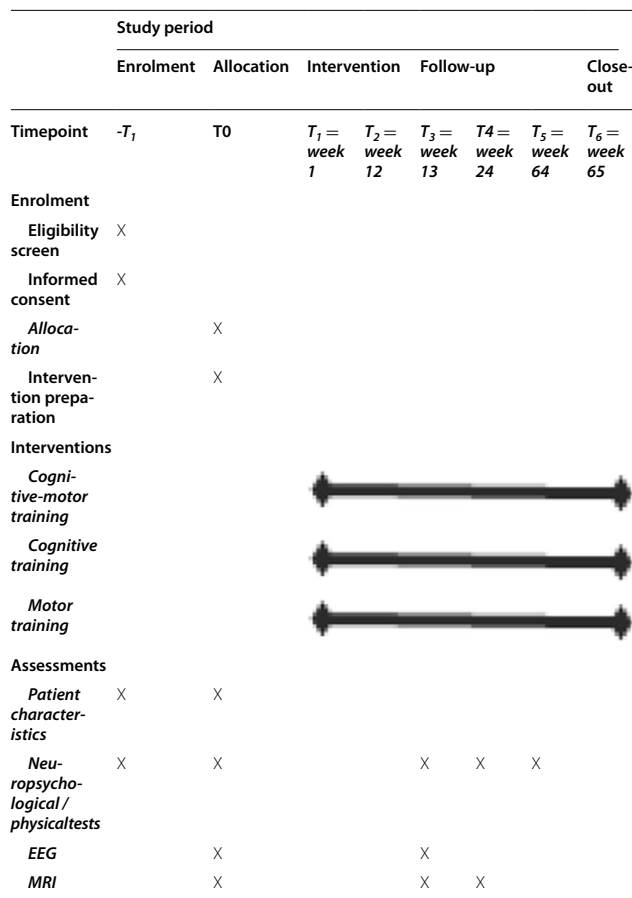
The link between CI and physical performance is of particular interest. Studies have found numerous associations between aspects of cognition and measures of physical performance in PwMS [10–15]. These associations impelled recent interest in the possibility of enhancing cognition by training and improving physical performance and vice versa [6, 16]. There is preliminary evidence of improved processing speed, learning, memory and executive functions in PwMS after exercise training [6]. Literature on combined cognitive-motor interventions is scarce. A few studies have also found promising results in walking performance under dual-task conditions after dual-task training [17–19]. Two studies on combined cognitive-motor training as two separate interventions found that adding a cognitive treatment to a motor treatment improved cognitive, emotional [20, 21] and motor aspects [20] in PwMS. Ageing studies on combined cognitive-motor rehabilitation are more prevalent, with limited evidence for its effectiveness in improving cognition and functional status, both with and without the presence of CI [22–24]. However, more well-designed studies with active control groups and larger sample sizes, as well as data on the appropriate training characteristics and long-term effects, are needed before definite conclusions can be drawn.

Furthermore, there is emerging evidence that telerehabilitation and telerehabilitation in MS are beneficial, cost-effective and satisfactory for both patients and healthcare professionals [25], as well as low-level evidence for improvement of functional activities, fatigue and quality of life after telerehabilitation in PwMS [26]. In the context of the COVID-19 pandemic, telerehabilitation has gained momentum and is increasingly applied in daily practice in the follow-up of MS and other conditions [27–29] and could be of particular interest in the assessment and treatment of cognitive impairment [28].

We set up a randomised controlled clinical trial to assess whether a combined cognitive-motor telerehabilitation programme improves working memory compared to cognitive or motor telerehabilitation only in PwMS in patients with impaired working memory. Furthermore, we will assess the effect on walking performance and identify mechanisms of improvement and predictors of treatment response.

Methods

This protocol was constructed using the SPIRIT reporting guidelines ([30], see [attachment](#)). Based on these guidelines, the following diagram was constructed:



Trial design

CoMoTeMS (Cognitive-Motor Telerehabilitation in Multiple Sclerosis) is a two-centre, randomised, controlled, parallel-group and blinded clinical trial, consisting of one intervention group and two active control groups. Recruitment will start in July 2022 in the Universitair Ziekenhuis Brussel (academic hospital) and the National Multiple Sclerosis Center Melsbroek (specialist hospital). In total, 90 patients with clinically definite multiple sclerosis (based on the revised McDonald criteria 2017 [31]) will be randomised to receive either combined cognitive-motor training, cognitive training or motor training, stratified by age, sex, education and baseline activity level and cognition. This study was approved by the ethics committees of the Universitair Ziekenhuis Brussel (B.U.N. 1432022000107) and the National Multiple Sclerosis Center Melsbroek and is registered at ClinicalTrials.

gov (NCT05355389, 2 May 2022). The study will be conducted in accordance with the Declaration of Helsinki, the guidelines of the International Conference on Harmonization of Good Clinical Practice (ICH-GCP) and the applicable Belgian legislation. All participants are required to give written informed consent before inclusion.

Participants

Dutch- and/or French-speaking patients with MS will be recruited at the Universitair Ziekenhuis Brussel and the National Multiple Sclerosis Center Melsbroek, as well as through an advertisement printed in the Flanders MS society magazine and published on social media. The inclusion criteria for participation are clinically definite multiple sclerosis (revised McDonald criteria 2017, any disease course), Expanded Disability Status Scale (EDSS) [32] below 6.0, digit span backwards z -score between $[-3$ and $-0.5]$ standard deviations below the median of the normative values [33, 34], age between 18 and 65 and ability to safely perform the motor rehabilitation programme in the home situation (assessed by a rehabilitation physician and/or occupational or physiotherapist). Exclusion criteria are participation to a cognitive rehabilitation programme within 6 months before inclusion, inpatient multidisciplinary rehabilitation programme within 3 months before inclusion or planned inpatient rehabilitation programme during trial, start of or switch in immunomodulatory treatment within 3 months prior to inclusion, less than 1 month post-exacerbation, major psychiatric or medical disorder that could influence cognitive functions, combined vision with optimal correction below 0.6 on Snellen Visual Acuity Test and the patient being unable or unwilling to undergo electroencephalography (EEG) or magnetic resonance imaging (MRI). Patients following physiotherapy at home or an outpatient multidisciplinary rehabilitation programme will not be excluded, but will be asked to postpone significant changes in intensity and content until after the trial. Furthermore, we will ask the patients to postpone inpatient multidisciplinary rehabilitation programmes from the start of the training until after the last MRI at 3 months post-training, i.e. a total period of 6 months.

Intake and intervention

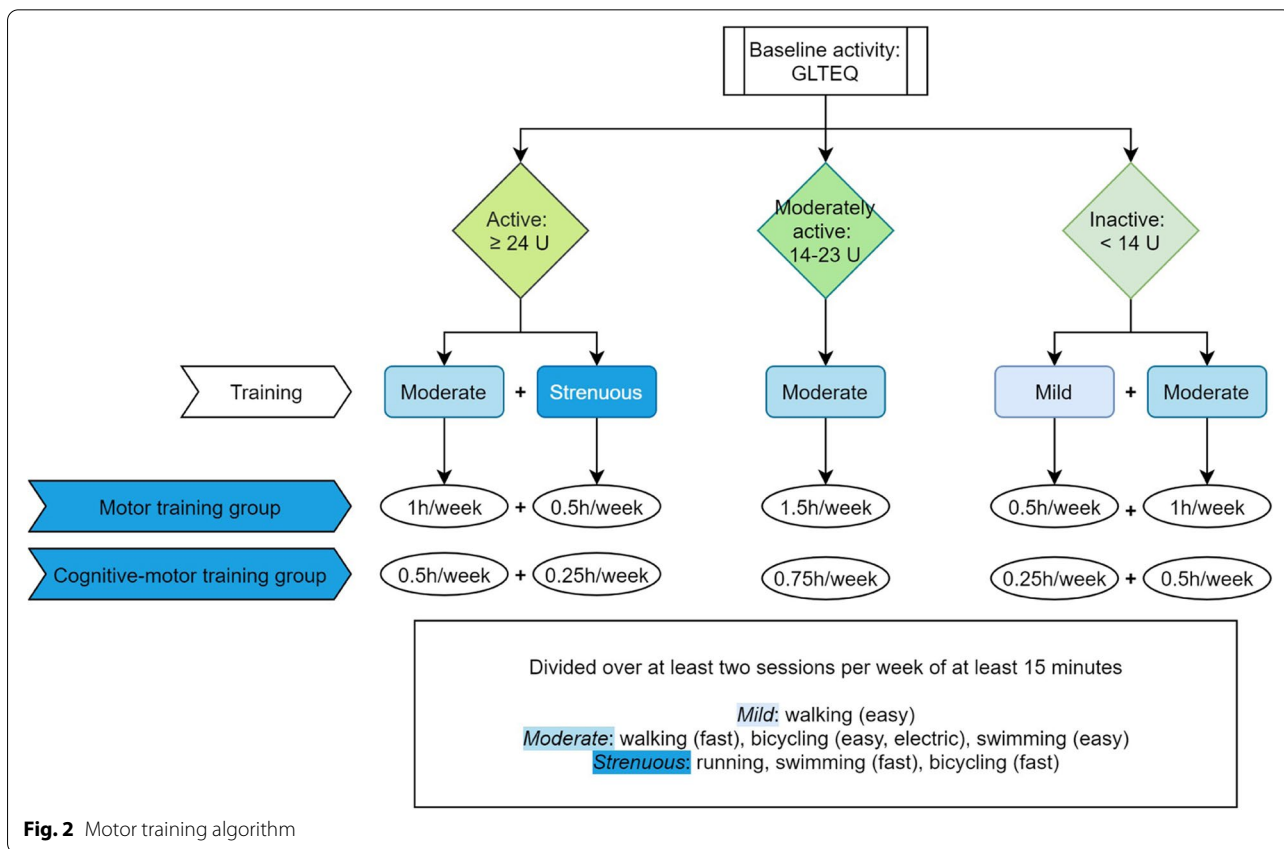
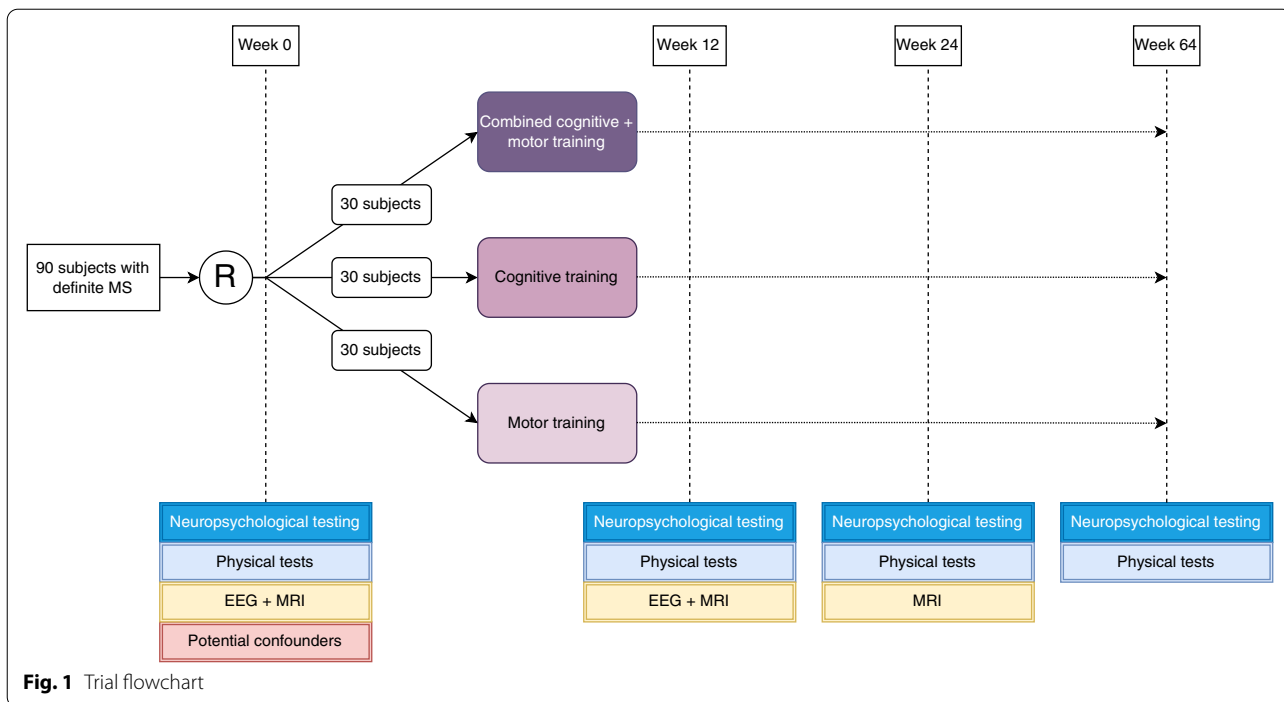
Eligibility for participation is determined at a screening visit after written consent, at which point a digit span backwards and an assessment of vision using the Snellen Visual Acuity test are performed. From patients who are eligible for participation, data on age, sex, disease type, course and duration, EDSS score, time since last relapse, medication, level of education, living situation and additional physiotherapy/rehabilitation will be

collected. Furthermore, they will be randomised 1:1 to receive either combined cognitive-motor training, cognitive training or motor training, stratified by age, sex, education, baseline activity level and cognition (through minimisation of the intercentroid distances in a five-dimensional space). Each group will receive 90 min of training per week for 12 weeks. This duration and frequency are based on a systematic review on cognitive-motor rehabilitation in the elderly, which recommends a training scheme of 1 to 3 h weekly for 12 to 16 weeks [23]. Furthermore, clinical and neuroimaging assessments will be planned before and after the training programme, at 24 weeks and at 64 weeks (see Fig. 1). Neuropsychological and physical testing and EEG will take place 1 week before the start and 1 week after completion of the training. MRI measurements will be carried out in a time window of 2 weeks before and after the training.

Patients in the cognitive-motor training group will carry out both the cognitive and the motor training programme, while patients in the cognitive training group and the motor training group will respectively carry out only the cognitive training programme and the motor training programme (see Fig. 1). Before the start of the training, a start-up teleconsultation with an MS nurse will be scheduled, where patients will receive clear instructions on how to carry out the training programme(s).

For the cognitive treatment intervention, we will use the widely used cognitive training programme RehaCom® (Hasomed GmbH, Magdeburg, Germany). This is a computer-aided programme with more than 30 modules focusing on different domains of cognition. RehaCom has shown improvements in verbal learning, visuospatial memory, information processing speed, attention, executive functions, depression, fatigue and quality of life in PwMS [35–38]. Patients will train on their home computer without direct therapist supervision, using three RehaCom modules (Working Memory, Topological Memory and Shopping) that are focused on improving working memory. Both patients in the combined intervention and the cognitive intervention group will be doing a 45-min computer session respectively 1 and 2 days per week for a total of 12 weeks. During one 45-min training session, patients will complete 15 min of exercises of each of the three modules. The level of difficulty of the exercises is automatically adapted to the patient's performance.

For the motor training, we will use a patient-tailored training programme based on the patient's baseline activity level. At inclusion, all patients will complete the Godin Leisure-Time Exercise Questionnaire (GLTEQ) to assess their level of activity and be divided into three groups (see Fig. 2) [39]. Based on their baseline physical activity level, patients can choose from a number of



aerobic activities of either mild, moderate or strenuous intensity, with a total training time of 90 min per week for the motor training group and 45 min for the combined cognitive-motor training group, divided over at least two training sessions per week of at least 15 min per session (see Fig. 2). The training will be carried out individually at home, without therapist supervision. Patients will use a heart rate sensor to maintain the correct training intensity, with 20–39%, 40–59% and 60–84% of their heart rate reserve (target heart rate = $\text{heart rate reserve} \times X\% \text{ intensity} + \text{resting heart rate}$; $\text{heart rate reserve} = \text{maximum heart rate} - \text{resting heart rate}$; $\text{maximum heart rate} = 220 - \text{age}$ [40]) respectively corresponding to mild, moderate and strenuous training [41–43]. Heart rate will be monitored using a sport watch (Polar Unite, Polar Electro, Kempele, Finland), provided by the research team and equipped with an accelerometer and a heart rate sensor. Furthermore, patients will be asked to rate the training intensity with the Rating of Perceived Exertion scale (RPE [44]). A score of 10–11, 12–13 and 14–16 corresponds to mild, moderate and strenuous training respectively [41, 42]. Both baseline activities and training activities in the context of the study will be logged using the sports watch. In order to ensure that activity levels remain the same in the group receiving only cognitive training, the activity levels of these patients will be monitored as well. Adaptations to training intensity in response to issues reported by patients will be decided on a case-by-case basis.

Participants will have a 20-min teleconsultation once every 2 weeks with a trained MS nurse. The teleconsultations will take place using Microsoft Teams® (Microsoft Corporation, Redmond, WA, USA) and the patient can use any device equipped with a webcam and microphone. The consultations consist of a structured interview dealing with motivation of the patient to continue the training, perceived impact of cognitive and physical difficulties on the patient's life in the past weeks, effort applied to the training in the previous weeks, technical difficulties experienced, targets for next weeks' training, and additional questions by the patient. Adherence to the training programmes will be assessed through a RehaCom therapist account for the cognitive training and through a Polar Flow for Coach account for the motor training.

Primary outcome parameter

The primary outcome measure is the digit span backwards test [33], which assesses working memory. The examiner produces a list of digits at a rate of one digit per second and patients have to repeat the list in reverse order. Two trials are presented for each span length. If patients fail two trials of the same span length, the test is ended. The test starts with a list of two items and

gradually increases to a maximum of eight items. Based on clinical experience, we will consider an improvement of one point on this test a clinically significant difference. This test will be carried out at the start of the trial, after 12 weeks of training, at 24 weeks and 64 weeks.

Secondary outcome parameters

The following secondary clinical outcome measures will be assessed: Expanded Disability Status Scale (EDSS), Brief International Cognitive Assessment for Multiple Sclerosis [45] (BICAMS), Backward Corsi [34], 6-Minute Walk Test [46] (6MWT), 25-Foot Walk Test (25FWT), 9-Hole Peg Test (9HPT), Hospital Anxiety and Depression Scale [47] (HADS), Fatigue Scale for Motor and Cognitive functions [48] (FSMC), Visual Analogue Scale [49] (VAS) on the impact of perceived cognitive symptoms on daily life, Cognitive & Leisure Activity Scale [50] (CLAS) and Godin Leisure-Time Exercise Questionnaire [39] (GLTEQ). Furthermore, the 36-Item Short Form Survey [51] (SF-36) and Multiple Sclerosis Impact Scale-29 [52] (MSIS-29) will be completed by Dutch-speaking participants and the Sclérose En Plaques-59 [53] (SEP-59, a combination of the SF-36 and MS-specific questions) will be completed by French-speaking participants. All tests will be carried out at the start of the trial, after 12 weeks of training, at 24 weeks and 64 weeks.

Furthermore, MRI and EEG data will be collected at the start of the trial and after 12 weeks of training, with an additional MRI exam at 24 weeks.

MRI of the brain

MRI analyses will be carried out at the Universitair Ziekenhuis Brussel on a GE SIGNA Premier 3T MRI scanner using a 48-channel head coil. Scans will be performed at the start of the trial, after 12 weeks of training and at 24 weeks. The following images will be acquired: a high-resolution 3D T1 scan (echo time (TE) 3.0ms; repetition time (TR) 7.3ms; flip angle = 12°; field of view = 256 × 256mm²; acquisition matrix = 256 × 256; 180 slices; slice thickness = 1.0mm; bandwidth = 244.1 Hz/pixel; acceleration factor 1.5 × 1.5; scanning time = 4m08s. Images will be reconstructed to a 512 × 512 × 360 matrix), a high-resolution 3D T2 FLAIR scan (TR = 7800ms; TE = 124ms; echo train length (ETL) = 222; field of view = 256 × 230mm²; acquisition matrix = 256 × 256; 170 slices; slice thickness = 1.0mm; bandwidth = 390.6 Hz/pixel, acceleration factor 4.6 using HyperSense; scanning time = 4m13s. Images will be reconstructed to a 512 × 512 × 172matrix), a multi-shell high angular resolution diffusion-weighted imaging dataset (HARDI, TR = 4716s; TE = 71.4ms; field of view = 220 × 220mm; acquisition and reconstruction matrix = 128 × 128; 80 slices; slice thickness/gap = 1.7/0.0mm; 16 directions

with $b=700$ s/mm², 30 directions with $b=1200$ s/mm, 50 directions with $b=2800$ s/mm²; 5 $b=0$ images interleaved, hyperband factor =3, bandwidth = 3906.25 Hz/pixel; scanning time = 7m52s) along with a phase reversed volume with $b = 0$ and a 3D-QALAS (TR = 5000ms; TE = 1.9ms; inversion time = 100ms; ETL = 150; flip angle = 4; field of view = 256 × 256 × 150mm; cycle time = 900ms; bandwidth = 454.5Hz/pixel; acquisition and reconstruction resolution = 1.0 × 1.0 × 1.0mm; acceleration factor 2.6 using HyperSense; scanning time = 7m38s), to acquire quantitative maps and perform synthetic MRI. The diffusion directions will be calculated using a bipolar electrostatic repulsion model, as implemented in mrtrix [54–56]. Fibre cross-section (FC) and apparent fibre density (FD) will be investigated in white matter through a fixel-based hARDI analysis [57]. The following parameters will be assessed: diffusion tensor image (DTI) parameters (fractional anisotropy (FA) and mean diffusivity (MD)) derived from the $b=700$ s/mm² images, graph theoretical metrics (average path length, edge strength, clustering coefficient, smallworldness and modularity, ratio of inter- versus intrahemispheric connectivity strength), lesion volume, cortical volume and volumes of white matter and deep grey matter. See below for more details.

EEG

EEG recordings will be made at the start of the trial and after 12 weeks of training. Measurements will be obtained using a portable recording setup with 64 EEG sensors, with horizontal and vertical eye movements and electrocardiography (ECG) leads. Sampling frequency will be 512 Hz. Resting-state EEGs will be recorded, as well as task-related EEGs with the following paradigms: auditory P300 paradigm [58], n-back test [59] and adjusted symbol digit modalities test (SDMT) [60]. Event-related potentials, as well as the following graph theoretical metrics will be assessed: average path length, edge strength, clustering coefficient, smallworldness and modularity and ratio of inter- versus intrahemispheric connectivity strength. See below for more details.

Sample size

We calculated the minimal sample size with G*Power [61], using an ANOVA design (repeated measures, within-between interaction) with a power of 95% and an alpha error rate of 5%. Under the assumption of a large effect size ($f = 0.40$, based on the change in digit span backwards score after cognitive training [62]) and moderate correlation between the pre- and post-training measurements ($r = 0.50$), the required sample size is 30. Under the less favourable assumption of a medium effect size ($f = 0.25$) and a small correlation among repeated

measurements ($r = 0.30$), the required total sample size is 90. In this study, we chose a total sample size of 90, with 30 subjects in each group.

Blinding and statistical methods

The study will be blinded: patients will not be made aware of the rationale and predictions of the study (pseudo-blinding). The randomisation procedure and the teleconsultations will be carried out and communicated to participants by a trained MS nurse, while the baseline and follow-up testing and analyses are carried out by an investigator who is blinded to the treatment allocation of the patients. Unblinding will only be done in the unlikely case of serious adverse events.

Differences between the different treatment groups in the clinical endpoints compared to baseline will be assessed with a one-sided ANOVA repeated measures test with a within-between interaction. A type I error probability of 0.05 will be used for the main effects and interaction effects. We will correct for multiple comparisons in the post hoc analyses via a family-wise error rate. Per-protocol analyses will be performed, and to correct for missing data, analyses will be repeated using the last observation carried forward method. In case of dropout before the second follow-up testing at 24 weeks, the differences in clinical endpoints at week 12 compared to baseline will still be assessed.

Furthermore, we will identify mechanisms of improvement using graph theoretical analysis. We will pre-process the EEG data in the Oxford Centre for Human Brain Activity (OHBA) software library (OSL 2.0), first using opt (OSL's pre-processing pipeline), then using oat (OSL's analysis tool). We will use independent component analysis to denoise recordings. Then, we will identify and regress out artefactual independent components by their degree of correlation with electrooculography (EOG) and ECG and by their degree of kurtosis (eliminating both extreme high and low kurtosis). Then, we will calculate a panel of potential EEG markers of cognitive performance, derived from network EEG analysis. From the pre-processed EEG, we will extract 4-second epochs. This epoch length is an adequate compromise between frequency resolution and minimisation of data loss. These epochs will enter a window-based network construction with the electrodes treated as nodes, calculated using the mutual information edge detection. From the diffusion-weighted imaging dataset, we will derive structural network information via probabilistic tractography and a pre-defined atlas. Graph theoretical metrics calculated for both functional (EEG) and structural (diffusion weighted imaging) measures allow us to summarise the functional and structural networks in a small number of features. Next to traditional features (average path length,

edge strength, clustering coefficient, smallworldness and modularity), ratio of inter- versus intrahemispheric connectivity strength will be assessed.

Finally, we will identify predictors of treatment response by using logistic regression. To account for possible non-linear correlations, we will use machine learning, more specifically random forest classifiers.

Discussion

The treatment of cognitive impairment in MS is an important unmet need. While cognitive rehabilitation has been proven to be effective in improving cognitive performance in MS [7–9], studies with larger sample sizes, inclusion of patients with progressive disease, assessment of the effects on daily life and long-term follow-up data are still lacking [6]. Furthermore, research in the elderly indicates that combined cognitive-motor rehabilitation may be more effective than single cognitive or motor training [23]. We set up a randomised controlled clinical trial to assess whether a combined cognitive-motor telerehabilitation programme improves working memory compared to only cognitive and only motor telerehabilitation in PwMS.

Some aspects of the trial need clarification. First, we have chosen not to include a passive control group, since the effectiveness of cognitive rehabilitation in multiple sclerosis has already been proven [7–9], and the goal of this study is to evaluate whether a combined cognitive-motor training is more effective than single cognitive or motor training in improving cognitive performance. Second, our primary outcome measure is the digit span backwards, a measure of working memory, since the cognitive part of our training programme is focused on working memory improvement and studies have shown that improvement of cognitive performance seems to be limited to the functions that were trained [23]. Impairments in working memory occur frequently in MS, affecting patients in both the earliest and later stages of the disease [63]. Third, while letting the patient choose between different aerobic activities increases variability of the motor training, it allows for an increased feasibility of the study and motivation of the patient, as well as increased clinical applicability. Finally, despite the known limitations of age-predicted maximum heart rate equations [40], we have chosen not to carry out a maximal exercise test to calculate the heart rate zone, since the planned testing and training are already very elaborate and taxing for the patient and the goal of the heart rate monitoring is to support the patient in preventing that the training intensity is too high or too low, rather than to construct a strict training regimen of a specific intensity. Since MS can be associated with an attenuated heart rate response to exercise due to autonomic dysfunction,

patients will also be using a Rating of Perceived Exertion scale (RPE [44]) to assess training intensity.

Research on combined cognitive-motor training in multiple sclerosis is still lacking. Our trial is unique since it is the first to compare the effect of combined cognitive-motor training to both single cognitive and single motor training on cognition in MS. Furthermore, the training is completely home-based, thereby eliminating transportation and reducing therapist time, while enabling the patient to carry out the training independently at any time of the day. These advantages increase the potential applicability of this intervention in daily practice. Finally, our study will include a large sample of PwMS, with both a relapsing-remitting and progressive disease course, and collection of data on long-term follow-up, mechanisms of improvement and predictors of treatment response.

Trial status

Recruitment will start in the summer of 2022 and will be completed in the summer of 2025.

Protocol version 2.2, dated 18 July 2022.

World Health Organization Trial Registration Data Set

Data category	Information
Primary registry and trial identifying number	clinicaltrials.gov, NCT05355389
Date of registration in primary registry	2 May 2022
Secondary identifying numbers	Fonds Wetenschappelijk Onderzoek (FWO), 1SD5322N
Source(s) of monetary or material support	Fonds Wetenschappelijk Onderzoek (FWO)
Primary sponsor	Universitair Ziekenhuis Brussel/Vrije Universiteit Brussel Laarbeeklaan 101 - 1090 Jette, 02 477 41 11 Pleinlaan 2 - 1050 Brussel
Secondary sponsor(s)	/
Contact for public queries	Delphine Van Laethem, delphine.van.laethem@vub.be Guy Nagels, guy.nagels@uzbrussel.be
Contact for scientific queries	Delphine Van Laethem, delphine.van.laethem@vub.be Guy Nagels, guy.nagels@uzbrussel.be
Public title	Cognitive-motor telerehabilitation in multiple sclerosis
Scientific title	Cognitive-motor telerehabilitation in multiple sclerosis
Countries of recruitment	Belgium
Health condition(s) or problem(s) studied	Multiple sclerosis

Data category	Information
Intervention(s)	Cognitive training: working memory training with RehaCom Motor training: patient-tailored aerobic training <i>Experimental:</i> combination of cognitive and motor training <i>Active comparators:</i> single cognitive and single motor training
Key inclusion and exclusion criteria	<i>Ages eligible for study:</i> 18-65 years <i>Sexes eligible for study:</i> both <i>Accepts healthy volunteers:</i> no <i>Inclusion Criteria:</i> clinically definite multiple sclerosis (revised McDonald criteria 2017), Expanded Disability Status Scale (EDSS) below 6.0, digit span backwards z-score between [-3 and -0.5] standard deviations below the median of the normative values, age between 18 and 65, able to safely perform motor rehabilitation in the home situation (assessed by rehabilitation physician and/or occupational or physiotherapist) <i>Exclusion Criteria:</i> cognitive rehabilitation within six months before inclusion, inpatient multidisciplinary rehabilitation program within three months before inclusion or planned inpatient program during trial, start of or switch in immunomodulator treatment within three months before inclusion, less than one month post-exacerbation, major psychiatric or medical disorder that could influence cognitive functions, combined vision with optimal correction below 0.6 on Snellen Visual Acuity Test, unable or unwilling to undergo EEG or MRI
Study type	Pseudoblinded* parallel randomised controlled intervention trial *subjects are blinded to study rationale, investigators are blinded to treatment allocation
Date of first enrolment	1 September 2022
Target sample size	90
Recruitment status	Recruiting
Primary outcome(s)	Change in digit span backwards post- compared to pre-treatment
Key secondary outcomes	Change in other cognitive scores (BICAMS, backward Corsi), physical scores (EDSS, 6MWT, 25FWT, 9HPT), questionnaires (HADS, FSMC, VAS, SF-36, MSIS-29, SEP-59, GLTEQ, CLAS), MRI and EEG parameters

Abbreviations

6MWT: 6-Min Walk Test; BICAMS: Brief International Cognitive Assessment for Multiple Sclerosis; CI: Cognitive impairment; CLAS: Cognitive and Leisure Activity Scale; DTI: Diffusion tensor image; EDSS: Expanded Disability Status Scale; ECG: Electrocardiography; EEG: Electroencephalography; EOG: Electrooculography; ETL: Echo train length; FA: Fractional anisotropy; FSMC: Fatigue Scale of Motor and Cognitive functions; GLTEQ: Godin Leisure-Time Exercise Questionnaire; 25FWT: 25-Foot Walk Test; 9HPT: 9-Hole Peg Test;

HADS: Hospital Anxiety and Depression Scale; MD: Mean diffusivity; MRI: Magnetic resonance imaging; MS: Multiple sclerosis; MSIS-29: Multiple Sclerosis Impact Scale-29; OHBA: Oxford Centre of Human Brain Activity; PwMS: Persons with multiple sclerosis; RPE: Rating of Perceived Exertion; SDMT: Symbol Digit Modalities Test; SEP-59: Sclérose En Plaques-59; SF-36: Short Form-36; TE: Echo time; TR: Repetition time; VAS: Visual Analogue Scale.

Supplementary Information

The online version contains supplementary material available at <https://doi.org/10.1186/s13063-022-06697-9>.

Additional file 1. SPIRIT Checklist.

Acknowledgements

We would like to thank Annick Van Merhaegen-Wieleman for her invaluable support in the setup of this project.

Oversight and monitoring

The coordinating centre (VUB/UZB) will be responsible for overseeing the patient recruitment, trial organisation and data management. Delphine Van Laethem will be responsible for identifying potential recruits and taking consent, supervised by Frederik Van de Steen, Jeroen Van Schependom and Guy Nagels. Testing of participants will be carried out by Delphine Van Laethem and Frederik Van de Steen, supervised by Jeroen Van Schependom and Guy Nagels. Day-to-day guidance and support for the rehabilitation programs of the participants will be carried out by Annick Van Merhaegen-Wieleman, supervised by Guy Nagels. Researchers involved in the project will meet every week, to be able to discuss progress and potential issues. Independent supervision of the trial will be carried out by the Clinical Trial Centre of the UZ Brussel. Furthermore, yearly progress reports will be submitted to the ethical committees of the UZ Brussel and the National MS Center Melsbroek.

Authors' contributions

DVL, FVDS, JVS and GN conceived the study and developed the protocol. DK, MN, PVS, MD and MBD contributed to the study design and to the development of the proposal. DVL wrote the manuscript, with critical feedback and input from all authors. All authors read and approved the final manuscript.

Funding

Delphine Van Laethem is funded by an FWO PhD fellowship (1SD5322N, www.fwo.be). Frederik Van de Steen is funded by an FWO postdoctoral fellowship (1267422N, www.fwo.be). Guy Nagels is funded by a senior clinical investigator fellowship (1805620N, www.fwo.be). These funding sources had no role in the design of this study and will not have any role during its execution, analyses, interpretation of the data or decision to submit results.

Availability of data and materials

Only researchers that are directly involved in the project will have access to the final, pseudonymised dataset. Researchers interested in a collaboration are welcome to contact the senior authors.

Declarations

Ethics approval and consent to participate

This study was approved by the ethics committees of the Universitair Ziekenhuis Brussel and the National Multiple Sclerosis Center Melsbroek. Written informed consent to participate will be obtained from all participants by the investigators carrying out the testing. If patients are included in ancillary studies for which additional data needs to be collected, additional informed consent will be obtained.

Any modifications to the protocol will require a formal amendment to the protocol, which will be submitted to both ethical committees. Any unanticipated and/or serious adverse events that are classed as related and unexpected will be reported to the ethics committee.

Consent for publication

N/A.

Competing interests

The authors declare no competing interests.

Author details

¹AIMS Lab, Center For Neurosciences, UZ Brussel, Vrije Universiteit Brussel, Pleinlaan 2, 1050 Brussel, Belgium. ²Department of Physical and Rehabilitation Medicine, UZ Brussel, Brussel, Belgium. ³The Wellcome Trust Centre for Neuroimaging, University College London, London, UK. ⁴Department of Rehabilitation, National Multiple Sclerosis Center, Melsbroek, Belgium. ⁵Department of Rehabilitation Sciences, KU Leuven, Leuven, Belgium. ⁶Department of Radiology, UZ Brussel, Brussel, Belgium. ⁷Neurology Department, National Multiple Sclerosis Center, Melsbroek, Belgium. ⁸Neurology Department, UZ Brussel, Brussel, Belgium. ⁹Center for Neurosciences, Vrije Universiteit Brussel, Brussel, Belgium. ¹⁰Department of Electronics and Informatics (ETRO), Vrije Universiteit Brussel, Brussel, Belgium. ¹¹St Edmund Hall, University of Oxford, Oxford, UK.

Received: 5 July 2022 Accepted: 27 August 2022

Published online: 14 September 2022

References

- Feigin VL, Krishnamurthi RV, Theadom AM, Abajobir AA, Mishra SR, Ahmed MB, et al. Global, regional, and national burden of neurological disorders during 1990–2015: a systematic analysis for the Global Burden of Disease Study 2015. *Lancet Neurol*. 2017;16(11):877–97.
- Benedict RHB, Amato MP, DeLuca J, Geurts JGG. Cognitive impairment in multiple sclerosis: clinical management, MRI, and therapeutic avenues. *Lancet Neurol*. 2020;19(10):860–71.
- Rao SM, Leo GJ, Bernardin L, Unverzagt F. Cognitive dysfunction in multiple sclerosis. I. Frequency, patterns, and prediction. *Neurology*. 1991;41(5):685–91.
- Clemens L, Langdon D. How does cognition relate to employment in multiple sclerosis? A systematic review. *Mult Scler Relat Disord*. 2018;26:183–91.
- Lincoln NB, Radford KA. Cognitive abilities as predictors of safety to drive in people with multiple sclerosis. *Mult Scler*. 2008;14(1):123–8.
- DeLuca J, Chiaravalloti ND, Sandroff BM. Treatment and management of cognitive dysfunction in patients with multiple sclerosis. *Nat Rev Neurol*. 2020;16(6):319–32.
- Gromisch ES, Fiszdon JM, Kurtz MM. The effects of cognitive-focused interventions on cognition and psychological well-being in persons with multiple sclerosis: a meta-analysis. *Neuropsychol Rehabil*. 2020;30(4):767–86.
- Lampit A, Heine J, Finke C, Barnett MH, Valenzuela M, Wolf A, et al. Computerized cognitive training in multiple sclerosis: a systematic review and meta-analysis. *Neurorehabil Neural Repair*. 2019;33(9):695–706.
- Taylor LA, Mhizha-Murira JR, Smith L, Potter K-J, Wong D, Evangelou N, et al. Memory rehabilitation for people with multiple sclerosis. *Cochrane Database Syst Rev*. 2021;10(10):CD008754.
- Langdon DW, Thompson AJ. Multiple sclerosis: a preliminary study of selected variables affecting rehabilitation outcome. *Mult Scler*. 1999;5(2):94–100.
- Benedict RHB, Holtzer R, Motl RW, Foley FW, Kaur S, Hojnacki D, et al. Upper and lower extremity motor function and cognitive impairment in multiple sclerosis. *J Int Neuropsychol Soc*. 2011;17(4):643–53.
- Motl RW, Cadavid D, Sandroff BM, Pilutti LA, Pula JH, Benedict RHB. Cognitive processing speed has minimal influence on the construct validity of Multiple Sclerosis Walking Scale-12 scores. *J Neurol Sci*. 2013;335(1–2):169–73.
- Kalron A. The relationship between specific cognitive domains, fear of falling, and falls in people with multiple sclerosis. *Biomed Res Int*. 2014;2014:281760.
- D’Orio VL, Foley FW, Armentano F, Picone MA, Kim S, Holtzer R. Cognitive and motor functioning in patients with multiple sclerosis: neuropsychological predictors of walking speed and falls. *J Neurol Sci*. 2012;316(1–2):42–6.
- Denissen S, De Cock A, Meurrens T, Vleugels L, Van Remoortel A, Gebara B, et al. The impact of cognitive dysfunction on locomotor rehabilitation potential in multiple sclerosis. *J Cent Nerv Syst Dis*. 2019;11:117957351988404.
- Motl RW, Sandroff BM, DeLuca J. Exercise training and cognitive rehabilitation. *Neurorehabil Neural Repair*. 2016;30(6):499–511.
- Veldkamp R, Baert I, Kalron A, Tacchino A, D’hooge M, Vanzeir E, et al. Structured cognitive-motor dual task training compared to single mobility training in persons with multiple sclerosis, a multicenter RCT. *J Clin Med*. 2019;8(12):2177.
- Sosnoff JJ, Wajda DA, Sandroff BM, Roeing KL, Sung J, Motl RW. Dual task training in persons with multiple sclerosis: a feasibility randomized controlled trial. *Clin Rehabil*. 2017;31(10):1322–31.
- Peruzzi A, Zarbo IR, Cereatti A, Della Croce U, Mirelman A. An innovative training program based on virtual reality and treadmill: effects on gait of persons with multiple sclerosis. *Disabil Rehabil*. 2017;39(15):1557–63.
- Barbarulo AM, Lus G, Signoriello E, Trojano L, Grossi D, Esposito M, et al. Integrated cognitive and neuromotor rehabilitation in multiple sclerosis: a pragmatic study. *Front Behav Neurosci*. 2018;12:196.
- Jimenez-Morales R, Herrera-Jimenez L, Macias-Delgado Y, Perez-Medinilla Y, Diaz-Diaz S, Forn C. Cognitive training combined with aerobic exercises in multiple sclerosis patients: a pilot study. *Rev Neurol*. 2017;64(11):489–95.
- Law LLF, Barnett F, Yau MK, Gray MA. Effects of combined cognitive and exercise interventions on cognition in older adults with and without cognitive impairment: a systematic review. *Ageing Res Rev*. 2014;15(1):61–75.
- Lauenroth A, Ioannidis AE, Teichmann B. Influence of combined physical and cognitive training on cognition: a systematic review. *BMC Geriatr*. 2016;16:141.
- Yang C, Moore A, Mpofu E, Dorstyn D, Li Q, Yin C. Effectiveness of combined cognitive and physical interventions to enhance functioning in older adults with mild cognitive impairment: a systematic review of randomized controlled trials. *Gerontologist*. 2020;60(8):633–42.
- Yeroushalmi S, Maloni H, Costello K, Wallin MT. Telemedicine and multiple sclerosis: a comprehensive literature review. *J Telemed Telecare*. 2019;26(7–8):400–13.
- Khan F, Amatyia B, Kesselring J, Galea MPG. Telerehabilitation for persons with multiple sclerosis. A Cochrane review. *Eur J Phys Rehabil Med*. 2015;51(3):311–25.
- Keesara S, Jonas A, Schulman K. Covid-19 and health care’s digital revolution. *N Engl J Med*. 2020;382(23):e82.
- Ghadiri F, Moghadasi AN, Sahraian MA. Telemedicine as a strategic intervention for cognitive rehabilitation in MS patients during COVID-19. *Acta Neurol Belg*. 2022;1:1.
- D’Haeseleer M, Eelen P, Sadeghi N, D’Hooghe MB, Van Schependom J, Nagels G. Feasibility of real time internet-based teleconsultation in patients with multiple sclerosis: interventional pilot study. *J Med Internet Res*. 2020;22(8):e18178.
- Chan AW, Tetzlaff JM, Gøtzsche PC, Altman DG, Mann H, Berlin JA, et al. *BMJ*. 2013;346:e7586.
- Thompson AJ, Banwell BL, Barkhof F, Carroll WM, Coetzee T, Comi G, et al. Diagnosis of multiple sclerosis: 2017 revisions of the McDonald criteria. *Lancet Neurol*. 2018;17(2):162–73.
- Kurtzke JF. Rating neurologic impairment in multiple sclerosis: an expanded disability status scale (EDSS). *Neurology*. 1983;33(11):1444–52.
- Raiford SE, Coalson DL, Saklofske DH, Weiss LG. Practical issues in WAIS-IV administration and scoring. In: *WAIS-IV clinical use and interpretation*. Cambridge: Academic Press Inc; 2010. p. 25–59.
- Monaco M, Costa A, Caltagirone C, Carlesimo GA. Forward and backward span for verbal and visuo-spatial data: standardization and normative data from an Italian adult population. *Neurol Sci*. 2013;34(5):749–54.
- Messinis L, Kosmidis MH, Nasios G, Konitsiotis S, Ntoskou A, Bakirtzis C, et al. Do secondary progressive multiple sclerosis patients benefit from computer-based cognitive neurorehabilitation? A randomized sham controlled trial. *Mult Scler Relat Disord*. 2020;39:101932.
- Campbell J, Langdon D, Cercignani M, Rashid W. A randomised controlled trial of efficacy of cognitive rehabilitation in multiple sclerosis: a cognitive, behavioural, and MRI study. *Neural Plast*. 2016;2016:4292585.
- Flavia M, Stampatori C, Zanotti D, Parrinello G, Capra R. Efficacy and specificity of intensive cognitive rehabilitation of attention and executive functions in multiple sclerosis. *J Neurol Sci*. 2010;288(1–2):101–5.
- Cerasa A, Gioia MC, Valentino P, Nisticò R, Chiriaco C, Pirritano D, et al. Computer-assisted cognitive rehabilitation of attention deficits for multiple sclerosis: a randomized trial with fMRI correlates. *Neurorehabil Neural Repair*. 2013;27(4):284–95.

39. Godin G, Jobin J, Bouillon J. Assessment of leisure time exercise behavior by self-report: a concurrent validity study. *Can J Public Health*. 1986;77(5):359–62.
40. Shookster D, Lindsey B, Cortes N, Martin JR. Accuracy of commonly used age-predicted maximal heart rate equations. *Int J Exerc Sci*. 2020;13(7):1242–50.
41. Physical Activity Guidelines Advisory Committee. Physical Activity Guidelines Advisory Committee Report. Washington, DC; 2008. Available from: https://health.gov/sites/default/files/2019-10/CommitteeReport_7.pdf. Accessed on 13 Dec 2021
42. Halabchi F, Alizadeh Z, Sahraian MA, Abolhasani M. Exercise prescription for patients with multiple sclerosis; potential benefits and practical recommendations. *BMC Neurol*. 2017;17(1):1–11.
43. Karvonen M, Kentala E, Mustala O. The effects of training on heart rate; a longitudinal study. *Ann Med Exp Biol Fenn*. 1957;35(3):307–15.
44. Borg G. Psychophysical bases of perceived exertion. *Med Sci Sports Exerc*. 1982;14(5):377–81.
45. Langdon DW, Amato MP, Boringa J, Brochet B, Foley F, Fredrikson S, et al. Recommendations for a brief international cognitive assessment for multiple sclerosis (BICAMS). *Mult Scler J*. 2012;18(6):891–8.
46. de Jong K, Sanderink T, Heesbeen I. 6 minutes timed walking test. Utrecht; 2001. Available from: <https://meetinstrumentenzorg.nl/wp-content/uploads/instrumenten/6MinWT-handl-HOOGSTRAAT.pdf>. Accessed on 29 Dec 2021.
47. Snaith RP. The hospital anxiety and depression scale. *Health Qual Life Outcomes*. 2003;1(1):29.
48. Penner IK, Raselli C, Stöcklin M, Opwis K, Kappos L, Calabrese P. The Fatigue Scale for Motor and Cognitive Functions (FSMC): validation of a new instrument to assess multiple sclerosis-related fatigue. *Mult Scler*. 2009;15(12):1509–17.
49. Bokhorst M. Uitgebreide toelichting van het meetinstrument Visual Analogue Scale (VAS). 2014. Available from: <https://meetinstrumentenzorg.nl/instrumenten/visual-analogue-scale/>. Accessed on 29 Dec 2021.
50. Galvin JE, Tolea MI, Chrisphonte S. The Cognitive & Leisure Activity Scale (CLAS): a new measure to quantify cognitive activities in older adults with and without cognitive impairment. *Alzheimers Dement*. 2021;7(1):e12134.
51. Aaronson NK, Muller M, Cohen PDA, Essink-Bot ML, Fekkes M, Sanderman R, et al. Translation, validation, and norming of the Dutch language version of the SF-36 Health Survey in community and chronic disease populations. *J Clin Epidemiol*. 1998;51(11):1055–68.
52. Hobart J. The Multiple Sclerosis Impact Scale (MSIS-29): a new patient-based outcome measure. *Brain*. 2001;124(5):962–73.
53. Vernay D, Gerbaud L, Biolay S, Coste J, Debourse J, Aufauvre D, et al. Quality of life and multiple sclerosis: validation of the French version of the self-questionnaire (SEP-59). *Rev Neurol*. 2000;156(3):247–63.
54. Papadakis NG, Murrills CD, Hall LD, Huang CLH, Adrian CT. Minimal gradient encoding for robust estimation of diffusion anisotropy. *Magn Reson Imaging*. 2000;18(6):671–9.
55. Tournier JD, Smith R, Raffelt D, Tabbara R, Dhollander T, Pietsch M, et al. MRtrix3: a fast, flexible and open software framework for medical image processing and visualisation. *Neuroimage*. 2019;202:116137.
56. Jones D, Horsfield M, Simmons A. Optimal strategies for measuring diffusion in anisotropic systems by magnetic resonance imaging. *Magn Reson Med*. 1999;42(3):515–25.
57. Raffelt DA, Tournier JD, Smith RE, Vaughan DN, Jackson G, Ridgway GR, et al. Investigating white matter fibre density and morphology using fixel-based analysis. *Neuroimage*. 2017;144:58–73.
58. Laton J, Van Schependom J, Gielen J, Decoster J, Moons T, De Keyser J, et al. Single-subject classification of schizophrenia patients based on a combination of oddball and mismatch evoked potential paradigms. *J Neurol Sci*. 2014;347(1–2):262–7.
59. Costers L, Van Schependom J, Laton J, Bajjot J, Sjøgård M, Wens V, et al. Spatiotemporal and spectral dynamics of multi-item working memory as revealed by the n-back task using MEG. *Hum Brain Mapp*. 2020;41(9):2431–46.
60. Leavitt VM, Wylie G, Genova HM, Chiaravalloti ND, DeLuca J. Altered effective connectivity during performance of an information processing speed task in multiple sclerosis. *Mult Scler J*. 2012;18(4):409–17.
61. Faul F, Erdfelder E, Lang A, Buchner A. G*Power 3: a flexible statistical power analysis program for the social, behavioral, and biomedical sciences. *Behav Res Methods*. 2007;39(2):175–91.
62. Vogt A, Kappos L, Calabrese P, Stöcklin M, Gschwind L, Opwis K, et al. Working memory training in patients with multiple sclerosis - comparison of two different training schedules. *Restor Neurol Neurosci*. 2009;27(3):225–35.
63. Chiaravalloti ND, DeLuca J. Cognitive impairment in multiple sclerosis. *Lancet Neurol*. 2008;7(12):1139–51.

Publisher's Note

Springer Nature remains neutral with regard to jurisdictional claims in published maps and institutional affiliations.

Ready to submit your research? Choose BMC and benefit from:

- fast, convenient online submission
- thorough peer review by experienced researchers in your field
- rapid publication on acceptance
- support for research data, including large and complex data types
- gold Open Access which fosters wider collaboration and increased citations
- maximum visibility for your research: over 100M website views per year

At BMC, research is always in progress.

Learn more biomedcentral.com/submissions

