

RESEARCH

Open Access



Acute kidney injury in critical COVID-19: a multicenter cohort analysis in seven large hospitals in Belgium

Hannah Schaubroeck^{1*}, Wim Vandenberghe¹, Willem Boer², Eva Boonen³, Bram Dewulf⁴, Camille Bourgeois⁴, Jasperina Dubois⁵, Alexander Dumoulin⁶, Tom Fizez², Jan Gunst^{7,8}, Greet Hermans^{8,9}, Piet Lormans⁶, Philippe Meersseman⁹, Dieter Mesotten^{2,10}, Björn Stessel^{5,10}, Marc Vanhoof³, Greet De Vlieger^{7,8†} and Eric Hoste^{1,11†}

Abstract

Background: Acute kidney injury (AKI) has been reported as a frequent complication of critical COVID-19. We aimed to evaluate the occurrence of AKI and use of kidney replacement therapy (KRT) in critical COVID-19, to assess patient and kidney outcomes and risk factors for AKI and differences in outcome when the diagnosis of AKI is based on urine output (UO) or on serum creatinine (sCr).

Methods: Multicenter, retrospective cohort analysis of patients with critical COVID-19 in seven large hospitals in Belgium. AKI was defined according to KDIGO within 21 days after ICU admission. Multivariable logistic regression analysis was used to explore the risk factors for developing AKI and to assess the association between AKI and ICU mortality.

Results: Of 1286 patients, 85.1% had AKI, and KRT was used in 9.8%. Older age, obesity, a higher APACHE II score and use of mechanical ventilation at day 1 of ICU stay were associated with an increased risk for AKI. After multivariable adjustment, all AKI stages were associated with ICU mortality. AKI was based on sCr in 40.1% and UO in 81.5% of patients. All AKI stages based on sCr and AKI stage 3 based on UO were associated with ICU mortality. Persistent AKI was present in 88.6% and acute kidney disease (AKD) in 87.6%. Rapid reversal of AKI yielded a better prognosis compared to persistent AKI and AKD. Kidney recovery was observed in 47.4% of surviving AKI patients.

Conclusions: Over 80% of critically ill COVID-19 patients had AKI. This was driven by the high occurrence rate of AKI defined by UO criteria. All AKI stages were associated with mortality (NCT04997915).

Keywords: Acute kidney injury, Kidney replacement therapy, Renal replacement therapy, COVID-19, Intensive care unit, Epidemiology, Mortality, KDIGO, Urine output, Serum creatinine

Background

In December 2019, severe acute respiratory syndrome coronavirus 2 (SARS-CoV-2) appeared for the first time in China, causing an ongoing pandemic of coronavirus disease 2019 (COVID-19). COVID-19 overwhelmed health care systems with an immense strain on intensive care units (ICU) and caused excess mortality of almost 15 million deaths worldwide [1, 2]. Acute kidney injury

[†]Greet De Vlieger and Eric Hoste are joint last authors

*Correspondence: Hannah.Schaubroeck@UGent.Be

¹ Department of Intensive Care Medicine, Department of Internal Medicine and Pediatrics, Ghent University Hospital, Ghent University, Corneel Heymanslaan 10, 9000 Ghent, Belgium
Full list of author information is available at the end of the article



© The Author(s) 2022. **Open Access** This article is licensed under a Creative Commons Attribution 4.0 International License, which permits use, sharing, adaptation, distribution and reproduction in any medium or format, as long as you give appropriate credit to the original author(s) and the source, provide a link to the Creative Commons licence, and indicate if changes were made. The images or other third party material in this article are included in the article's Creative Commons licence, unless indicated otherwise in a credit line to the material. If material is not included in the article's Creative Commons licence and your intended use is not permitted by statutory regulation or exceeds the permitted use, you will need to obtain permission directly from the copyright holder. To view a copy of this licence, visit <http://creativecommons.org/licenses/by/4.0/>. The Creative Commons Public Domain Dedication waiver (<http://creativecommons.org/publicdomain/zero/1.0/>) applies to the data made available in this article, unless otherwise stated in a credit line to the data.

(AKI) has been reported as a complication of critical COVID-19 in 25–76%, and the use of kidney replacement therapy (KRT) in 5–44% [3–6] (Additional file 1: Table S1: Overview of studies reporting on AKI in critical COVID-19 patients). The Acute Disease Quality Initiative (ADQI) formulated in its 25th conference the need for more detailed epidemiological data [7].

The objective of this study was to evaluate the occurrence of AKI and use of KRT in critical COVID-19 in several large hospitals in Belgium and its association with mortality. We aimed to evaluate the association of baseline risk factors and therapeutic strategies in critical COVID-19 with AKI and with patient outcomes and to explore the difference in outcome when the diagnosis of AKI is based on urine output (UO) (AKI-UO) or on serum creatinine (sCr) (AKI-sCr) alone according to the 2012 KDIGO guidelines. Finally, we aimed to assess kidney outcomes, especially rapid reversal of AKI, kidney recovery and occurrence of acute kidney disease (AKD).

Methods

Study design, setting and participants

We conducted a multicenter, retrospective cohort analysis in adult (≥ 18 y) patients with critical COVID-19 admitted to several ICU departments (medical, surgical or mixed) in seven large hospitals in Flanders between February 1, 2020, and January 31, 2021. In some of the participating hospitals, ICU capacity was increased by creating extra ICU units outside the regular ICU department, e.g., in the post-anesthesia care unit.

We included patients if SARS-CoV-2 infection was confirmed by real-time reverse-transcriptase polymerase chain reaction (PCR) on nasopharyngeal or oropharyngeal swabs, bronchial aspirate or broncho-alveolar lavage fluid. Patients were excluded when there was a diagnosis of COVID-19 based on clinical symptoms or chest CT scan without confirmation by PCR, when patients who had a positive SARS-CoV-2 PCR were admitted to ICU for other medical reasons and when patients had end-stage kidney disease on chronic KRT.

The study was registered on clinicaltrials.gov (NCT04997915). The STROBE guidelines for cohort studies were applied (Additional file 1: Table S2).

Data collection and management

We collected patients' baseline characteristics, comorbidities, medication at home, specific treatment for COVID-19, potentially nephrotoxic drugs, biochemical parameters, use of mechanical ventilation, $\text{PaO}_2/\text{FiO}_2$ ratio, use of veno-venous extracorporeal membrane oxygenation (VV-ECMO), use of vasoactive drugs, severity of illness and kidney and patient outcomes. All data were extracted from the electronic patient data management

systems, pseudonymized and collected by each participating center. Pseudonymized data from all centers were merged into one large database, remote monitoring was applied to check validity of delivered data, and extensive data cleaning was performed.

Definitions

We described all relevant definitions (Additional file 1: Definitions Used, Table S3, Fig. S1). AKI, rapid reversal AKI, persistent AKI, AKD and kidney recovery were defined according to KDIGO and ADQI guidelines [8–10].

Outcomes

The pre-specified primary outcome was the rate of COVID-19-associated AKI and its stages assessed up to day 21 of ICU admission. We explored the association between AKI and ICU and hospital mortality. We also reported the association between AKI and 30-day mortality in patients who had at least 30 days of follow-up. We assessed the risk factors for developing AKI and for ICU mortality. Secondary outcomes included patient and kidney outcomes of AKI defined by serum creatinine (sCr) criteria (AKI-sCr) and urine output (UO) criteria (AKI-UO) separately. We also evaluated the rates and outcomes of rapid reversal AKI, persistent AKI, and AKD. Additionally, we assessed kidney recovery, persistent use of KRT and ICU and hospital length of stay (LOS).

Statistical analysis

Epidemiological data were reported as number (proportion) and median (25% quartile, 75% quartile). Univariate analysis of continuous variables was performed with the Mann–Whitney U test and Wilcoxon signed-rank test when appropriate. Discrete variables were evaluated with Fisher's exact test or chi-square test. Multivariable logistic regression analysis was used to explore risk factors for development of AKI and for assessment of the association between AKI and ICU mortality. Variables selected for inclusion in the models were those with a biological or plausible rationale and a p value of 0.25 or less in bivariate analysis of patients with and without AKI as well as ICU survivors and non-survivors. We used backward selection (Wald) to evaluate variables for inclusion and checked for collinearity and interaction. The Hosmer–Lemeshow test and the area under the receiver operating characteristic curve of the predicted probability of a model were used to assess goodness-of-fit and discrimination of the models (AUC-ROC, c statistic). Missing values were considered missing at random and were not replaced. All statistical analyses were

performed with SPSS Statistics 27 (IBM Corporation and Others®). Figures were made with SigmaPlot (Version 14.5, Systat Software Inc.). Confidence intervals of proportions were calculated according to Gardner et al. [11]. A sensitivity analysis was performed on the cohort with true baseline sCr, i.e., recorded within 7–365 days before ICU admission.

Ethical committee

This study was approved by the Ethics Committee (EC) of the participating hospitals. The EC of the Ghent University Hospital acted as central EC (BC-08285). Informed consent of participants was waived. This study was conducted in accordance with the ethical and scientific principles of Good Clinical Practice.

Results

Patient characteristics

In the final analysis, 1286 patients were included (Fig. 1). Baseline demographics, severity-of-illness parameters, and treatment during ICU admission are outlined

in Table 1. True baseline sCr was available in 69.1% of patients (95% CI 66.6%, 71.7%) (Additional file 1: Table S4).

Primary outcomes

AKI according to full KDIGO definition

Occurrence and stages Of 1286 patients, 85.1% developed AKI (95% CI 83.2%, 87.1%). The maximum AKI stage was 1 in 12.1% of patients (95% CI 10.3%, 13.8%), stage 2 in 47.4% (95% CI 44.7%, 50.2%), stage 3 in 25.7% (95% CI 23.3%, 28.0%) (Fig. 2a); 9.8% of patients (95% CI 8.2%, 11.4%) were treated with KRT.

Risk factors for developing AKI Patients with AKI were older, had a higher BMI and had more frequently diabetes and arterial hypertension compared to patients without AKI (Table 1). Baseline sCr was similar in both groups, while baseline estimated glomerular filtration rate (eGFR) was lower in the AKI group. AKI patients had higher severity-of-illness scores. Multivariable regression analysis showed an association between obesity and AKI (odds ratio (OR) 3.055, 95% CI 1.745, 5.347; $p < 0.001$) (Addi-

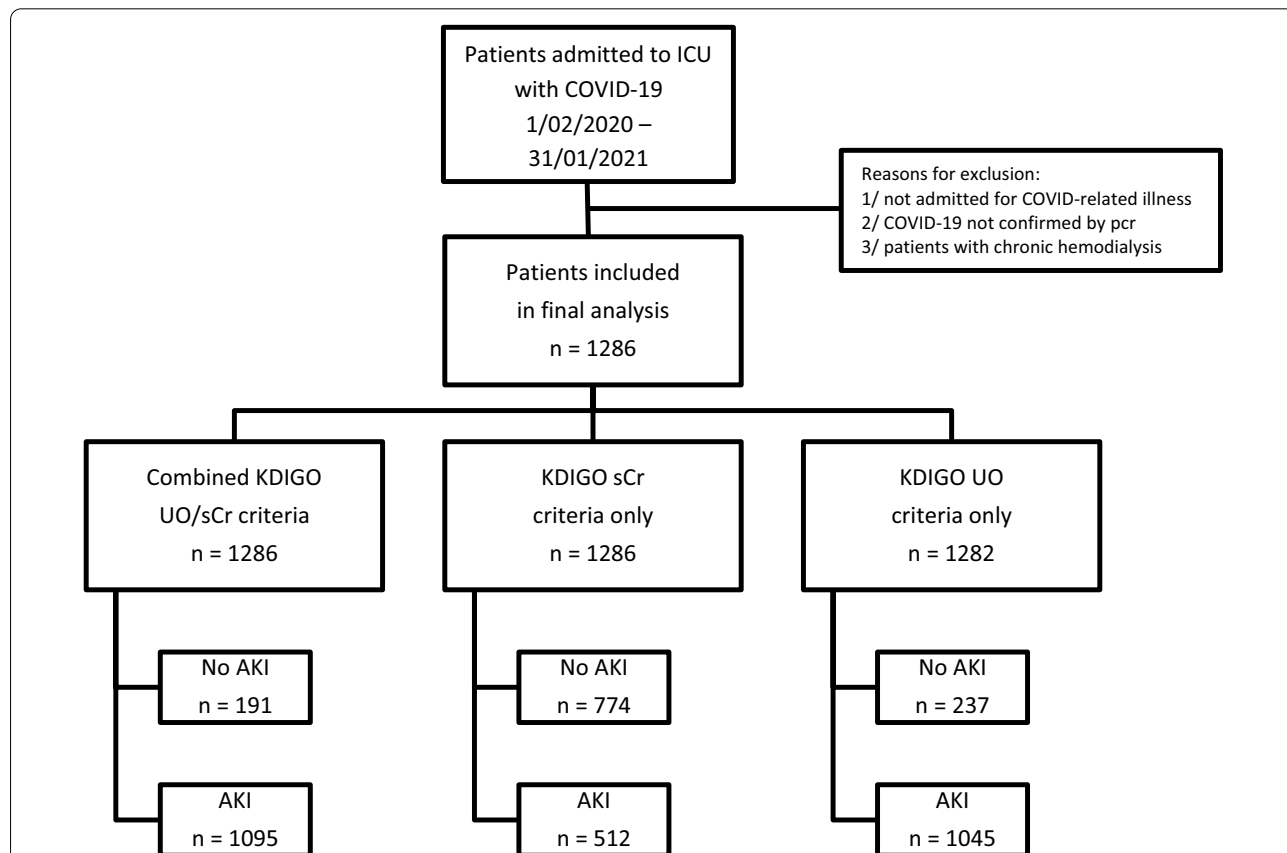


Fig. 1 Study flowchart. Flowchart summarizing patient selection and inclusion process as well as number of patients with AKI according to the full KDIGO definition, to sCr or to UO criteria

Table 1 (a) Baseline demographics, (b) severity-of-illness parameters, and (c) treatment during ICU admission

	All n = 1286	No AKI n = 191 14.9%	AKI n = 1095 85.1%	p Value
<i>(a) Baseline demographics</i>				
Sex (M/F) (n = 1286)	879 (68.4%)/407 (31.6%)	135 (70.7%)/56 (29.3%)	744 (67.9%)/351 (32.1%)	0.453
Age (y) (n = 1285)	69 (59, 77)	63 (53, 73)	69 (60, 77)	< 0.001
Body mass index (kg/m ²) (n = 1262)	27.8 (25.0, 32.0)	26.9 (24.4, 30.1)	28.1 (25.2, 32.5)	< 0.001
Baseline sCr (mg/dL) (n = 1286)	0.85 (0.67, 1.07)	0.84 (0.70, 1.03)	0.85 (0.67, 1.08)	0.781
eGFR (mL/min/1.73m ²) (n = 1285)	84 (67, 98)	86 (74, 101)	83 (66, 97)	0.014
CKD (eGFR < 60) (n = 1285)	252 (19.6%)	28 (14.7%)	224 (20.5%)	0.062
COVID day at Hospital admission (n = 849)	6.0 (3.0, 9.0)	7.0 (3.0, 10.0)	6.0 (3.0, 8.0)	0.295
COVID day at ICU admission (n = 850)	8.0 (5.0, 11.6)	9.0 (4.5, 11.6)	8.0 (5.0, 11.6)	0.732
<i>Comorbidities</i>				
Arterial hypertension (n = 1042)	492 (47.2%)	60 (39.7%)	432 (48.5%)	0.046
Cardiovascular disease (n = 948)	391 (41.2%)	51 (36.7%)	340 (42.0%)	0.238
COPD/asthma (n = 949)	145 (15.3%)	19 (13.7%)	126 (15.6%)	0.568
Diabetes (n = 955)	245 (25.7%)	23 (16.8%)	222 (27.1%)	0.010
Cirrhosis (n = 948)	18 (1.9%)	2 (1.4%)	16 (2.0%)	1.000
Cancer (n = 947)	112 (11.8%)	12 (8.7%)	100 (12.4%)	0.218
Immunocompromised (n = 948)	95 (10.0%)	18 (12.9%)	77 (9.5%)	0.213
<i>Medication at home</i>				
ACEI/ARBs (n = 727)	242 (33.3%)	28 (26.2%)	214 (34.5%)	0.091
Immunosuppressive drugs (n = 947)	56 (5.9%)	11 (8.0%)	45 (5.6%)	0.268
<i>Severity of illness at first day of ICU admission (In case of hospital transfer, first day of ICU in investigating center)</i>				
<i>(b) Severity-of-illness parameters</i>				
APACHE II (n = 883)	16.0 (13.0, 22.0)	14.0 (10.3, 17.0)	17.0 (13.0, 22.0)	< 0.001
SAPS II (n = 855)	39 (31, 48)	31 (24, 41)	40 (32, 49)	< 0.001
SOFA (n = 926)	5 (3, 10)	3 (2, 5)	5 (3, 10)	< 0.001
Lymphocytopenia (< 1000/ μ L) (n = 813)	518 (63.7%)	85 (72.6%)	433 (62.2%)	0.030
Ferritin (μ g/L) (n = 636)	1226 (617, 1942)	1390 (612, 2486)	1200 (617, 1916)	0.299
CRP (mg/L) (n = 1066)	132.5 (74.2, 209.8)	97.1 (54.5, 190.0)	138.3 (79.1, 213.1)	< 0.001
D-dimers (ng/mL) (n = 783)	1160 (573, 2344)	750 (290, 1623)	1246 (600, 2520)	< 0.001

Table 1 (continued)

	All n = 1286	No AKI n = 191 14.9%	AKI n = 1095 85.1%	p Value
PaO ₂ /FiO ₂ (n = 970)	89 (68, 127)	114 (75, 160)	88 (67, 124)	< 0.001
HFO (n = 923)	512 (55.5%)	55 (50.5%)	457 (56.1%)	0.262
NIV (n = 952)	91 (9.6%)	7 (5.1%)	84 (10.3%)	0.436
IMV (n = 962)	351 (36.5%)	16 (14.7%)	335 (39.3%)	< 0.001
Prone (n = 847)	63 (7.4%)	6 (5.7%)	57 (7.7%)	0.472
VV-ECMO (n = 838)	32 (3.8%)	0 (0%)	32 (4.4%)	0.025
Vasoactive drugs (n = 1286)	387 (30.1%)	32 (16.8%)	355 (32.4%)	< 0.001
MAP (mmHg) (lowest) (n = 971)	71 (61, 86)	75 (65, 87)	71 (61, 86)	0.175
<i>Severity of illness @ first day of AKI</i>				
AKI stage				
Stage 1			472 (45.1%)	
Stage 2			522 (49.9%)	
Stage 3			52 (5.0%)	
SOPA score (n = 353)			9 (5, 11)	
PaO ₂ /FiO ₂ (n = 1044)			98 (69, 137)	
HFO (n = 573)			290 (50.6%)	
NIV (n = 659)			49 (7.4%)	
IMV (n = 836)			400 (47.8%)	
VV-ECMO (n = 608)			42 (6.9%)	
Prone position (n = 638)			118 (18.5%; 29.2% of patients on IMV)	
Vasoactive drugs (n = 503)			322 (64.0%)	
MAP (mmHg) (lowest) (n = 854)			64 (55, 76)	
Lymphocytopenia (< 1000/μL) (n = 781)			658 (84.3%)	
Ferritin (μg/L) (n = 713)			1043 (414, 1700)	
CRP (mg/L) (n = 1060)			123 (63, 210)	
D-dimers (n = 709)			950 (340, 2121)	
<i>(c) Treatment during ICU admission</i>				
Corticosteroids (n = 1043)	780 (74.8%)	96 (63.6%)	684 (76.7%)	< 0.001
Hydroxychloroquine (n = 1285)	333 (25.9%)	40 (20.9%)	293 (26.8%)	0.089
Remdesivir (n = 1285)	193 (15.0%)	39 (20.4%)	154 (14.1%)	0.024
Anti-IL1 or anti-IL6 (n = 1286)	54 (4.2%)	5 (2.6%)	49 (4.5%)	0.238
Convalescent COVID-19 plasma (n = 1214)	15 (1.2%)	2 (1.1%)	13 (1.3%)	1.000
NSAIDs (n = 1285)	48 (3.7%)	5 (2.6%)	43 (3.9%)	0.377
Aminoglycoside (n = 1041)	83 (8.0%)	3 (2.0%)	80 (9.0%)	0.003
Vancomycin (n = 1285)	215 (16.7%)	5 (2.6%)	210 (19.2%)	< 0.001

Table 1 (continued)

	All n = 1286	No AKI n = 191 14.9%	AKI n = 1095 85.1%	p Value
Vasoactive drugs (n = 1286)	648 (50.4%)	37 (19.4%)	611 (55.8%)	<0.001
IMV (n = 870)	560 (64.4%)	18 (23.1%)	542 (68.4%)	<0.001

AKI acute kidney injury, M male, F female, y years, sCr serum creatinine, eGFR estimated glomerular filtration rate, COVID coronavirus disease, ICU intensive care unit, COPD chronic obstructive pulmonary disease, ACEI angiotensin-converting enzyme inhibitors, ARBs angiotensin receptor blockers, CRP C-reactive protein, PaO₂ arterial oxygen pressure, FiO₂ fraction of inspired oxygen, HFO high-flow oxygen, NIV noninvasive ventilation, IMV invasive mechanical ventilation, vv-ECMO veno-venous extracorporeal membrane oxygenation, MAP mean arterial pressure, IL interleukin, NSAIDs nonsteroidal anti-inflammatory drugs

Continuous variables are reported as median and interquartile ranges; categorical variables are reported as absolute numbers and frequencies

tional file 1: Table S5a, b, c). Other risk factors were age (OR 1.038, 95% CI 1.018, 1.059; $p < 0.001$) and invasive mechanical ventilation (IMV) on day of ICU admission (OR 2.182, 95% CI 1.144, 4.163; $p = 0.018$). Chronic kidney disease (CKD), hypertension, diabetes, APACHE II and vasoactive therapy at ICU admission were not associated with AKI.

Patient outcomes

Crude mortality Compared to patients without AKI, AKI patients had higher ICU, hospital and 30-day mortality (Fig. 2b; Table 2). Increasing AKI stages had increasing ORs for ICU mortality (stage 1: OR 3.729, 95% CI 1.843, 7.544; stage 2: OR 4.199, 95% CI 2.270, 7.768, stage 3: OR 13.537, 95% CI 7.260, 25.243) (Fig. 3a; Additional file 1: Table S6a, b). Patients on KRT had an increased ICU, hospital and 30-day mortality compared to patients not treated with KRT ($p < 0.001$) (Table 2).

Adjusted risk for ICU mortality After adjustment for covariates, all AKI stages were associated with ICU mortality (stage 1 OR: 3.179, 95% CI 1.054, 9.583; stage 2 OR: 3.024, 95% CI 1.139, 8.028; stage 3 OR: 12.039, 95% CI 4.418, 32.802) (Fig. 3b; Additional file 1: Table S6c, d). The model included age, baseline eGFR and comorbidities (arterial hypertension, COPD, diabetes, malignancy, immunodepression) as well as severity of illness at ICU admission (APACHE II score, PaO₂/FiO₂ and use of vasoactive therapy).

Secondary outcomes

AKI occurrence and stages according to sCr or UO

AKI-sCr was present in 40.1% (95% CI 37.4%, 42.8%) and AKI-UO in 81.5% of all patients (95% CI 79.4%, 83.6%) (Table 2). Occurrence of AKI-sCr and AKI-UO stages is presented in Fig. 2a.

Patient outcomes

Crude mortality according to AKI-sCr or AKI-UO In patients with AKI-sCr ICU, hospital and 30-day mortality were higher than in patients without AKI-sCr. This was similar for AKI-UO patients, except for 30-day mortality (Table 2). ICU mortality for AKI stages 1 and 2 was significantly higher when defined by AKI-sCr criteria compared to AKI-UO criteria (Fig. 2b; Table 3). All AKI-sCr stages and AKI-UO stage 2 and 3 were associated with ICU mortality in univariate analysis (Fig. 3a). Patients with AKI-sCr had higher ICU mortality (43.8% resp. 28.7%, $p < 0.001$) and hospital mortality (45.5% resp. 31.3%, $p < 0.001$) compared to patients with AKI-UO. A similar nonsignificant trend could be observed in 30-day mortality (42.9% resp. 37.2%, $p = 0.054$). Of patients not meeting AKI-sCr criteria, 75% had AKI-UO with a crude ICU mortality of 16.6% compared to 6.3% in the patients without any AKI ($p < 0.001$) (Table 3).

Adjusted risk for ICU mortality according to AKI definition

After correction for covariates, all AKI-sCr stages and AKI-UO stage 3 were associated with ICU mortality (adjusted OR AKI-sCr stage 1: 3.319, 95% CI 5.026, 5.345; stage 2: 4.417, 95% CI 1.921, 10.621; stage 3: 9.943, 95% CI 5.696, 17.355; adjusted OR AKI-UO stage 1: 1.474, 95% CI 0.597, 3.641; stage 2: 1.784, 95% CI 0.891, 3.570; stage 3: 5.636, 95% CI 2.676, 11.868) (Fig. 3b; Additional file 1: Table S6d). In a subanalysis of patients who developed AKI-UO but did not fulfill sCr criteria for AKI at any point, only AKI-UO stage 3 was associated with adjusted ICU mortality (Additional file 1: Table S6e).

Crude mortality according to AKD and rapid reversal of AKI

Patients who developed AKD had higher ICU, hospital and 30-day mortality compared to patients without AKD (Table 2). ICU mortality was higher in patients with persistent AKI than in patients with rapid reversal of AKI (Table 2).

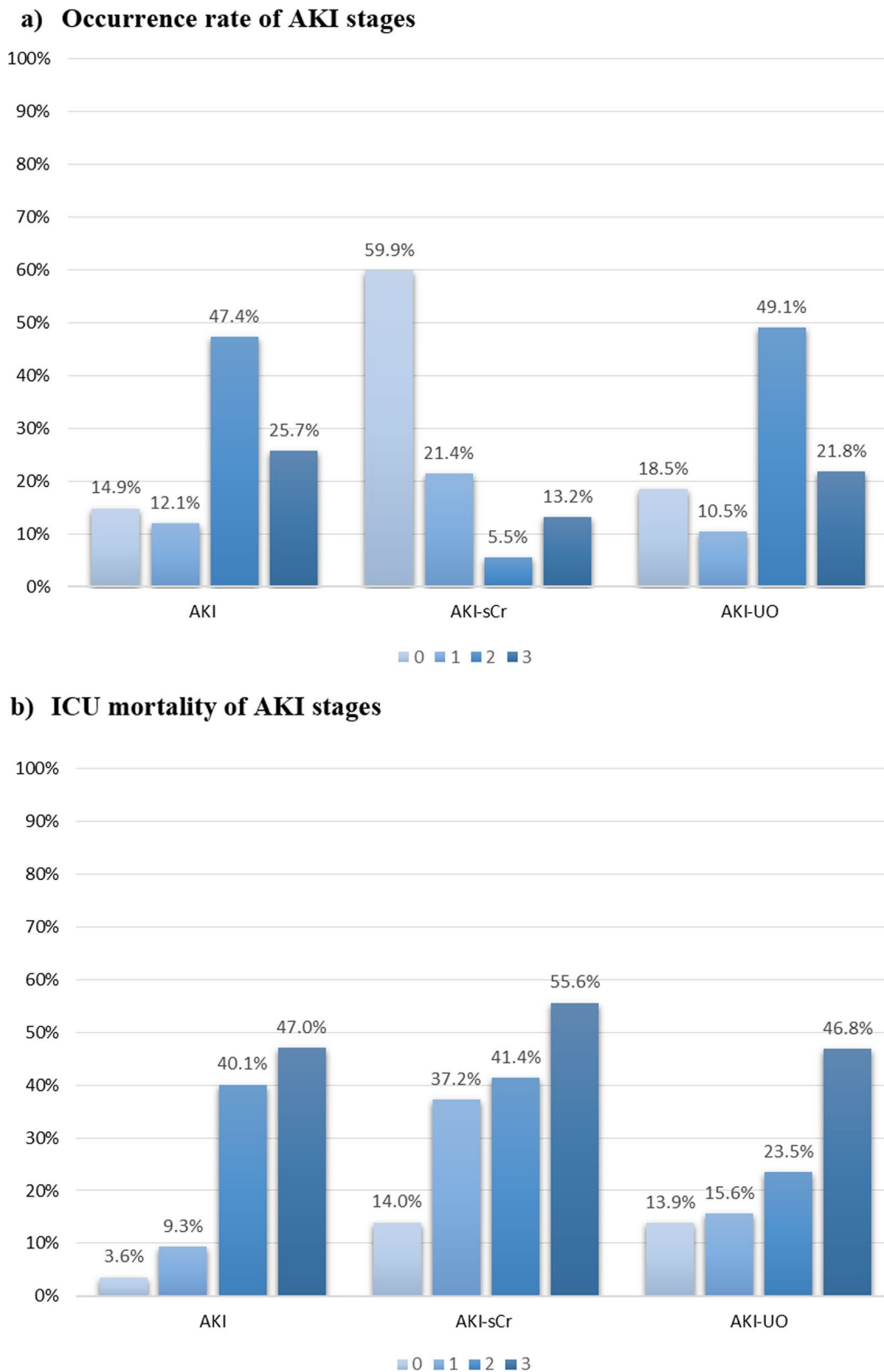


Fig. 2 Occurrence rate and ICU mortality of AKI stages. **a** Occurrence rate and **b** ICU mortality of AKI stages defined according to the full KDIGO definition and its components AKI-sCr and AKI-UO. AKI = acute kidney injury, AKI-sCr = AKI based on creatinine criteria only, AKI-UO = AKI based on urine output criteria only. Statistical significance of comparison of ICU mortality in AKI-sCr versus AKI-UO stages: AKI stage 0: $p = 0.002$; AKI stage 1: $p < 0.001$; AKI stage 2: $p = 0.001$; AKI stage 3: $p = 0.070$

Table 2 Patient and kidney outcomes according to different AKI categories and AKD

Mortality	ICU (n = 1286)	P	Hospital (n = 1282)	P	30-day (n = 807)	P
<i>(a) Patient outcomes</i>						
No AKI	12 (6.3%)	<0.001	17 (8.9%)	<0.001	11 (18.3%)	0.003
AKI	322 (29.4%)		350 (32.1%)		297 (37.3%)	
No AKI-sCr	108 (14.0%)	<0.001	133 (17.3%)	<0.001	95 (27.0%)	<0.001
AKI-sCr	226 (43.8%)		234 (45.5%)		195 (42.9%)	
No AKI-UO	33 (13.9%)	<0.001	40 (16.9%)	<0.001	28 (27.5%)	0.056
AKI-UO	300 (28.7%)		326 (31.3%)		261 (37.2%)	
RR-AKI	23 (18.4%)	0.042	29 (23.2%)	0.158	22 (36.1%)	0.982
P-AKI	311 (26.8%)		338 (29.2%)		268 (35.9%)	
No AKD	9 (5.7%)	<0.001	11 (6.9%)	<0.001	8 (17.8%)	0.009
AKD	325 (28.8%)		356 (31.7%)		282 (37.0%)	
No KRT	263 (22.7%)	<0.001	295 (25.5%)	<0.001	232 (33.9%)	0.004
KRT	71 (56.3%)		72 (57.1%)		58 (47.5%)	
<i>Length of stay (days)</i>						
All	11 (5.3, 22)	<0.001	18 (7, 34)	<0.001	/	/
No AKI	5 (2.8, 7.9)		13.5 (6, 22)			
AKI	12.1 (6.7, 24)		19 (7, 36)			
<i>(b) Kidney outcomes</i>						
AKI		1095/1286 (85.1%)				
ICU day start AKI (d)		2 (1, 2)				
ICU day AKI max (d)		2 (2, 4)				
Duration of AKI (d)		5 (3, 9)				
RR-AKI		125 (11.4%)				
AKD (n = 1286)		1127 (87.6%)				
AKD-no AKI (n = 191)		32 (2.8% of all AKD)				
AKD-AKI (n = 1095)		1095 (97.2% of all AKD)				
KRT (n = 1286)		126 (9.8%)				
CKRT		75 (59.5%)				
IHD		51 (40.5%)				
KRT start (d of ICU/date)		7 (2, 12)				
KRT end (d of ICU/date)		17 (10, 22)				
Duration KRT (d) (n = 96)		8 (3, 14)				
Kidney recovery (ICU survivors)		AKI-sCr vs AKI-UO: p < 0.001				
AKI (n = 773)		369 (47.7%)				
AKI-sCr (n = 290)		199 (68.6%)				
AKI-UO (n = 740)		407 (55.0%)				
AKI-UO excl KRT (n = 725)		397 (54.8%)				
sCr@d21/ICU discharge (mg/dl)		no AKI versus AKI p = 0.266				
All ICU survivors (n = 952)		0.73 (0.61, 0.93)				
No AKI (n = 179)		0.70 (0.65, 0.90)				
AKI (n = 773)		0.72 (0.60, 0.95)				
KRT at 21 days or ICU discharge (n = 95)		64 (67.4%)				

AKI acute kidney injury, AKI-sCr AKI based on creatinine criteria only, AKI-UO AKI based on urine output criteria only, RR-AKI AKI with rapid reversal, P-AKI persistent AKI, AKD acute kidney disease, KRT kidney replacement therapy, CKRT continuous kidney replacement therapy, IHD intermittent hemodialysis, ICU intensive care unit, excl excluded, sCr serum creatinine, d day

Continuous variables are reported as median and interquartile ranges; categorical variables are reported as absolute numbers and frequencies

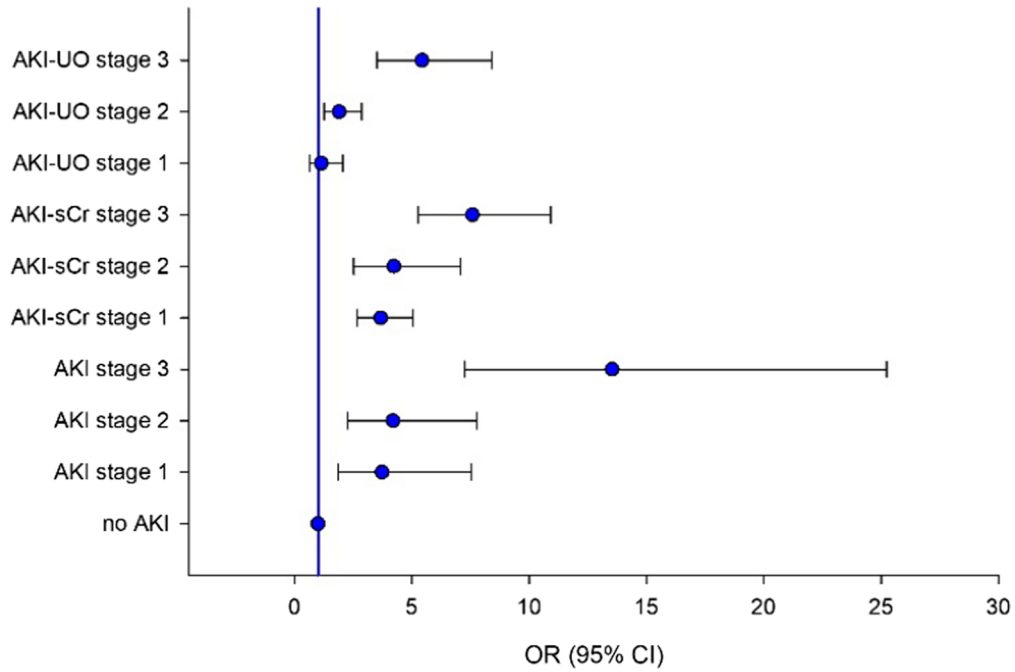
Length of stay Patients with AKI had a longer ICU and hospital LOS than patients without AKI (p < 0.001) (Table 2).

Kidney outcomes

AKI occurred early during ICU stay with a maximum AKI stage at 2 days after admission and a median

duration of 5 days (IQR 3–9) (Table 2). In 11.5% of AKI patients (95% CI 9.6%, 13.4%), KRT was initiated starting at a median interval of 7 days (IQR 2–12.5) after admission with a median duration of 8 days (IQR 3–14). Continuous KRT (CKRT) was initiated in 59.5% and intermittent hemodialysis (IHD) in 40.5%.

a) unadjusted



b) adjusted

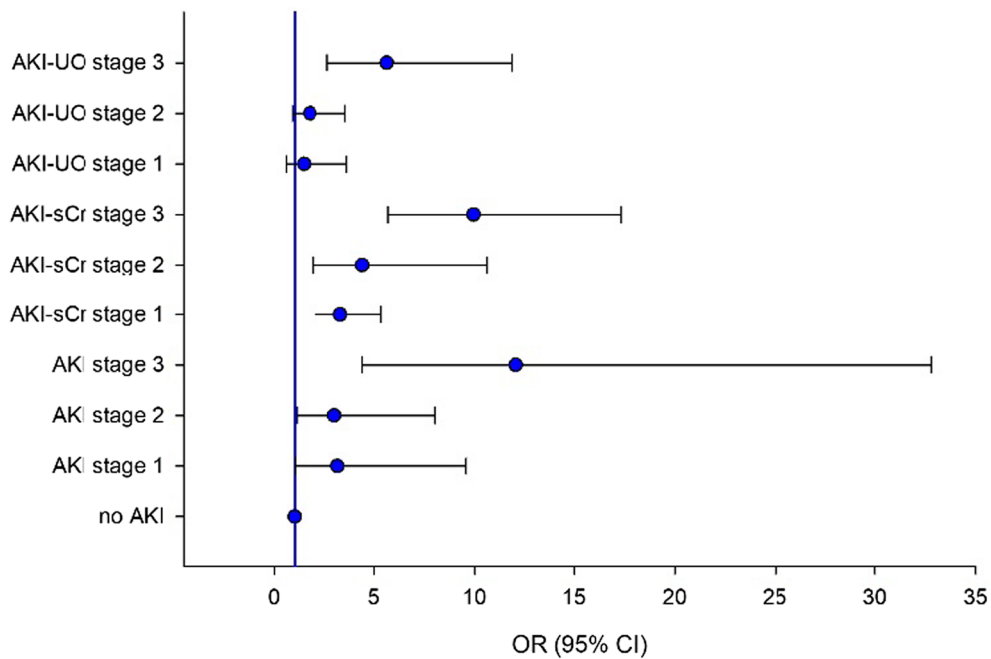


Fig. 3 Association between ICU mortality and AKI stages. Association between ICU mortality and AKI stage according to serum creatinine and/or urine output: **a** unadjusted, **b** adjusted

We observed rapid reversal in 11.4% of AKI patients (95% CI 9.5%, 13.3%), whereas 88.6% had persistent AKI (95% CI 86.7%, 90.5%) and 87.6% developed AKD (95%

CI 85.8%, 89.4%). Patients with rapid reversal had more AKI based on UO only, compared to patients with persistent AKI (Table 4). Kidney recovery at 21 days or ICU

Table 3 AKI stages according to serum creatinine or urine output and ICU mortality

AKI stages	No AKI-UO	AKI-UO 1	AKI-UO 2	AKI-UO 3	Total
No AKI-sCr	190	100	409	70	769
ICU mortality	12 (6.3%)	15 (15.0%)	68 (16.6%)	13 (18.6%)	108 (14.0%)
AKI-sCr 1	29	25	150	70	274
ICU mortality	10 (34.5%)	5 (20.0%)	52 (34.7%)	35 (50.0%)	102 (37.2%)¹
AKI-sCr 2	7	6	37	20	70
ICU mortality	4 (57.1%)	0 (0%)	10 (27.0%)	15 (75.0%)	29 (41.4%)²
AKI-sCr 3	11	4	34	120	169
ICU mortality	7 (63.6%)	1 (25.0%)	18 (52.9%)	68 (56.7%)	94 (55.6%)³
Total	237	135	630	280	1282
ICU mortality	33 (13.9%)	21 (15.6%)¹	148 (23.5%)²	131 (46.8%)³	(333) 26.0%

Bold 1 (diagonal): ICU mortality in patients having AKI according to both criteria (sCr and UO). Bold 2 (row or column 'total'): ICU mortality per AKI stage according to the used criterium

Statistical significance of comparison of ICU mortality in AKI-sCr versus AKI-UO stages: ¹AKI stage 1: $p < 0.001$; ²AKI stage 2: $p = 0.001$; ³AKI stage 3: $p = 0.070$

AKI acute kidney injury, AKI-sCr AKI based on creatinine criteria only, AKI-UO AKI based on urine output criteria only, ICU intensive care unit

Table 4 Rapid reversal of AKI according to fulfilled AKI criteria (sCr, UO or both)

AKI	sCr (n = 50)	UO (n = 579)	sCr + UO (n = 466)	p Value
P-AKI (n = 970)	32 (3.3%)	484 (50.1%)	454 (46.8%)	< 0.001
RR-AKI (n = 125)	18 (14.4%)	95 (76.0%)	12 (9.6%)	

AKI acute kidney injury, P-AKI persistent AKI, RR-AKI rapid reversal AKI, UO urine output, sCr serum creatinine, KRT kidney replacement therapy, sCr sCr criterion is fulfilled, UO UO criterion is fulfilled, sCr + UO both criteria are fulfilled to define AKI

discharge, whichever came first, was observed in 47.4% of all survivors with AKI (95% CI 44.2%, 51.3%), in 68.6% when AKI-sCr was present (95% CI 63.3%, 74.0%), and in 55.0% in case of AKI-UO (95% CI 21.4%, 58.6%). Of all patients who received KRT, 67.4% were still on KRT at time of ICU discharge or at day 21 after ICU admission (95% CI 54.6%, 73.4%). There was no significant difference in kidney recovery between patients treated with CKRT compared to IHD. Crude patient and kidney

outcomes according to KRT modality are outlined in Table 5. After correction for age, diabetes, arterial hypertension, APACHE II, PaO₂/FiO₂ and vasopressors at day 1, we observed a trend toward better survival in the patients who were treated with CKRT (aOR 0.211, 95% CI 0.044–1.007) compared to patients treated with IHD (Hosmer–Lemeshow 0.034).

Sensitivity analysis

As a sensitivity analysis, assessing risk factors for developing AKI and for ICU mortality was performed using only true baseline sCr which confirmed the results (Additional file 1: Table S5c, S6d).

Second COVID-19 wave versus first wave

Occurrence of AKI was similar during the two waves, independent of the AKI criterion used (Additional file 1: Table S7). Rates of rapid reversal of AKI and AKD did not differ between the two waves. KRT was less frequently used during the second wave (11.9% vs. 8.3%, $p = 0.035$).

Patients during the second wave were significantly older (median 67 y vs. 70 y, $p = 0.002$) and had a lower

Table 5 Crude patient and kidney outcomes according to KRT modality

	CKRT (n = 75)	IHD (n = 51)	p Value
ICU mortality	42/75 (56.0%)	29/51 (56.9%)	0.924
Hospital mortality	42/75 (56.0%)	30/51 (58.8%)	0.753
Kidney recovery (UO) in ICU survivors	20/33 (60.6%)	10/22 (45.5%)	0.269
Kidney recovery (sCr) in ICU survivors	14/33 (42.4%)	7/22 (31.8%)	0.428
Kidney recovery (KRT) in ICU survivors	22/33 (66.6%)	2/6 (33.3%)	0.123

CKRT continuous kidney replacement therapy, IHD intermittent hemodialysis, ICU intensive care unit, UO urine output, sCr serum creatinine, KRT kidney replacement therapy, Kidney recovery (UO) patient does not fulfill AKI-UO criteria, Kidney recovery (sCr) patient does not fulfill AKI-sCr criteria, Kidney recovery (KRT) patient is free of KRT

baseline serum creatinine. They had a lower SOFA and APACHE II score at admission. During the second wave, corticosteroids were used during hospitalization in almost all patients, remdesivir was administered more frequently, and hydroxychloroquine was not used. At day 1 of ICU admission, high-flow oxygen was more frequently applied; mechanical ventilation was used less often as well as vasoactive drugs. ICU mortality was significantly higher in the second wave (21.2% vs. 29%; $p=0.002$) in all patients and in patients with AKI (24.4% vs. 32.6%; $p=0.003$) (Additional file 1: Table S8).

Discussion

In this large multicenter cohort of 1286 patients with critical COVID-19, we found a high rate of AKI (85.1%) as defined by the 2012 KDIGO guidelines which occurred early in the disease course. KRT was used in 9.8% of patients. Older age, obesity, a higher APACHE II score and use of mechanical ventilation at day 1 of ICU stay were associated with an increased risk of AKI. After correction for confounders, all AKI stages were associated with ICU mortality.

In the majority of patients, AKI diagnosis was driven by UO criteria, while only 40% had AKI based upon a rise in sCr. The association between AKI and ICU mortality was more pronounced when AKI was diagnosed due to elevated sCr. In contrast, when staging was based upon UO, only AKI stage 3 was an independent predictor of ICU mortality.

Most patients developed persistent AKI and AKD. Kidney recovery was observed in almost half of surviving AKI patients. Rapid reversal of AKI yielded a better prognosis compared to patients with persistent AKI and AKD. Occurrence of AKI was similar during the first and the second COVID-19 wave in Belgium; ICU mortality was higher in the second COVID-19 wave in all patients and in AKI patients compared to the first wave.

Our study confirms that AKI is a frequent complication in critical COVID-19. The demonstrated AKI rate of 85% is markedly more than the 40–60% occurrence rate of AKI observed in a general ICU population [12–14]. We found that the median rate of AKI reported in critical COVID-19 was 55.8%, with a broad variation (Additional file 1: Table S1). Several studies in the USA also reported AKI in 60–80% of critical COVID-19 patients [6, 15–17]. This could even be an underestimation as some investigators defined AKI on sCr only [16, 17]. In a French cohort of 379 critical COVID-19 patients, half of patients had AKI in the first 7 days after ICU admission [18]. Lumlertgul et al. [3] observed AKI in 76% of 313 critical COVID-19 patients, which was more concordant with our findings. They used a time window of 14 days after ICU admission. In this cohort, we studied AKI

occurrence based on the full KDIGO definition within the first 21 days of ICU admission which could be an explanation for the difference. A multicenter cohort from Wuhan found AKI-sCr in almost half of the 275 patients with critical COVID-19 when the entire hospital stay was evaluated [19]. This is in line with our findings based on sCr alone.

The pathophysiology of AKI in critical COVID-19 is multifactorial. Acute tubular injury is the most frequent histological finding; however, collapsing glomerulopathy and thrombotic microangiopathy have been observed in this population. Other rare findings such as anti-neutrophil cytoplasmic antibody vasculitis, anti-glomerular basement membrane disease and podocytopathies have been reported [7, 20, 21]. Endothelial damage as well as local and systemic inflammatory responses with complement activation might play a role. Renal tropism by SARS-CoV-2 with direct invasion of the kidney has been proposed but remains controversial [22]. In critical COVID-19, indirect factors such as the presence of hypoxemia, hypotension, hypo- or hypervolemia could also contribute to the development of AKI as well as the use of specific treatments such as mechanical ventilation with high positive end-expiratory pressure or high inspiration pressure and use of nephrotoxic drugs [7, 21].

Use of KRT in critical COVID-19 was low in our cohort, compared to some previous epidemiological studies which observed use of KRT in up to 44% of patients [6]. In our summary of data reported in the literature, the median number of patients treated with KRT was 24.5%, and 25% of studies reported that less than 16.3% of patients were treated with KRT (Additional file 1: Table S1). This may be explained by differences in patient characteristics and variation in practice patterns. The threshold to initiate KRT might vary among ICU physicians and centers. The decision to initiate KRT may have been more conservative compared to a general ICU population. In view of the infectious hazard, doctors seem to be more reluctant to expose themselves and other healthcare professionals to COVID-19 patients which might delay consultation and hence treatment as shown by Scherer et al. [23]. However, restrictive use of KRT has no impact on patient outcomes as shown in several large studies and a meta-analysis. [24–27]. We hypothesize that integration of STARRT-AKI conclusions in daily practice was the main driver for the high threshold to start KRT in this cohort [24].

In this study, all AKI stages were associated with increased ICU mortality, which is in line with some reports in critical COVID-19, but in contrast to most studies in general ICU patients [13, 15, 19, 28]. The relation between AKI and mortality was less pronounced when UO was used as the only diagnostic tool for AKI.

Previously, the prognostic value of oliguria ($UO < 0.5$ ml/kg/h) has already been questioned in a general ICU population [29]. However, Kellum et al. showed that patients meeting both UO and sCr criteria for AKI in critically ill had worse outcomes compared to patients with AKI diagnosis based on one criterion. They advocate the absolute need for UO in diagnosing AKI [30]. This is supported by the observation of Macedo et al. that UO was a sensitive and early marker for AKI and associated with adverse outcomes in critically ill patients [31].

In our cohort, we observed that 75% of patients not meeting AKI-sCr criteria had AKI-UO, with a higher crude ICU mortality compared to patients without any AKI. In a subanalysis of patients with AKI-UO not fulfilling sCr criteria, only AKI-UO stage 3 was associated with ICU mortality after adjustment for covariates. This suggests that severe AKI-UO identified a relevant subset of AKI patients, similar to findings in the general ICU population [30].

The finding that oliguric AKI does not necessarily lead to worse prognosis in critical COVID-19 may be explained by the hypothesis that a decrease in UO rather reflects a functional change in kidney function without structural damage, whereas changes in sCr could be more compatible with structural changes. Biomarkers could play a role to differentiate the several phenotypes of AKI [32]. A decreased UO might be an early indicator of hypovolemia, e.g., secondary to insensible losses caused by fever and elevated work of breathing, which could precede biochemical changes and kidney damage when these adaptations to altered hemodynamics are persisting.

The high rate of oliguria in this cohort might be related to the conservative fluid management which was initially advised in treatment of critical COVID-19 [1]. This hypothesis could not be evaluated in this cohort. On the one hand, we assumed that not only fluid dynamics during ICU stay, but also fluid management before ICU admission might have influenced AKI occurrence since AKI occurred early during ICU stay and patients were already admitted to the hospital for a median duration of 8 days before entering the ICU. Fluid balances before ICU admission could not be obtained. On the other hand, fluid balance might not reflect the effective circulating volume. Standardized assessment of the intravascular volume status was not possible in our cohort since invasive hemodynamic monitoring was seldom used.

Rapid reversal of AKI yielded a better prognosis. Patients with rapid reversal had more AKI based on UO only, compared to patients with persistent AKI, which supports the hypothesis that compared to persistent AKI, a greater proportion of rapid reversal AKI could be caused by functional changes, i.e., hypovolemia or low effective circulating volume, leading to oliguria. Optimizing hemodynamics is key in treating these patients.

The high proportion of obese patients in the AKI group (one-third) and the use of actual body weight for calculation of UO as mL/kg/h could partially explain the high occurrence of oliguric AKI. It has been suggested to use adjusted body weight to classify oliguric AKI to avoid over-classification of AKI in obese patients [33]. This concept needs further validation.

Patients with critical COVID-19 and AKD had worse outcomes than patients without AKD, which is similar to findings in the general ICU population [34]. The occurrence of AKD was very high during ICU stay. According to the 2021 KDIGO definition, the diagnosis of AKD is met when AKI criteria are fulfilled, irrespective of the 7-d time window [10]. Thus, AKI is considered a subgroup of AKD which explains this high rate.

Almost 50% of surviving patients demonstrated kidney recovery at 21 days or at ICU discharge. Kidney recovery rate is probably higher at longer follow-up as has been demonstrated by Lumlertgul and colleagues who observed kidney recovery in 90.9% of survivors at 90 days [3]. These findings confirm that AKD is often a reversible condition which compasses patient groups with different disease trajectories [10].

When comparing the first and the second COVID-19 wave in Belgium, occurrence of AKI was similar. The crude ICU mortality as well as AKI-associated mortality was higher in the second versus the first wave. First, differences between measured confounders could certainly play a role. In the second wave, patients admitted to ICU were older compared to the first wave. More use of HFO during the second wave with a potential intubation delay might also have contributed to this difference. However, the hypothesis that HFO delays intubation in critical COVID-19 is not supported by a recent meta-analysis [35]. Second, mortality was most likely influenced by unmeasured confounders, such as the strain on the healthcare system, which was more pronounced in the second wave in Belgium with less postponement of regular care which could have led to a compromised COVID capacity and expertise, in comparison with the first wave (Additional file 1: Figure S1). Furthermore, studies have demonstrated that bacterial surinfections and fungal infections are frequent in patients with critical COVID-19 [36–38]. We did not compare the occurrence of ICU-acquired infections in the first versus the second wave which could also have contributed to ICU mortality.

Strengths

We conducted a multicenter study including seven large ICUs in Flanders. Using electronically recorded data, we collected a large dataset including hourly UO during 21 days of ICU admission which made it possible to

detect AKI patterns and differences in diagnosis depending on the used AKI criterion in critical COVID-19. To our knowledge, this is one of the largest multicenter cohort studies on COVID-19-associated AKI in critically ill patients using the full KDIGO definition of AKI and the first study exploring the differences between AKI defined by UO or by sCr as well as the relation to prognosis in COVID-19-associated AKI. In addition, we also explored the occurrence and outcomes of rapid reversal of AKI, persistent AKI and AKD.

Limitations

This study was retrospective in design; hence, we could only explore association and not causality. Estimation of the volume status of our patients was not possible in this retrospective cohort. Furthermore, patients were admitted to the hospital for over 1 week before ICU admission and developed AKI early in their ICU course. We therefore did not report fluid balances; hence, the association between fluid balance and AKI could not be explored.

Follow-up at 30 days was only available in two-thirds of patients, and long-term follow-up data at, for example, 90 days was unavailable which limits conclusions about long-term outcomes. Kidney outcomes were pragmatically assessed until up to 21 days after ICU admission; therefore, the presented rates of AKD and kidney recovery as well as duration of KRT could be underestimated.

Differences in treatment of COVID-19 patients within centers could be present which is inherent to the multicentric design. We included academic and non-academic centers as well as several types of ICU (medical, surgical, mixed). Since we aimed to give a global picture of COVID-associated AKI in Belgium, and given the fact that some centers had more than 1 ICU, we did not correct for a potential center effect in our analysis. Related to the level of care in most participating hospitals, potential referral bias could have resulted in a higher number of patients with more severe illness being admitted to these centers compared to non-referral centers which could lead to a higher rate of AKI.

Conclusions

In this large cohort of critical COVID-19, AKI occurred in 85% of patients. This was largely driven by the high occurrence rate of AKI defined by UO criteria. KRT was used in 1 in 10 patients. All AKI stages were associated with ICU mortality. AKI defined by UO criteria had better patient outcomes compared to AKI defined by sCr criteria. Kidney recovery at ICU discharge or at 21 days of ICU admission was present in almost half of surviving AKI patients.

Abbreviations

ACEI: Angiotensin-converting enzyme inhibitors; AKD: Acute kidney disease; AKI: Acute kidney injury; AKI-sCr: AKI based on creatinine criteria only; AKI-UO: AKI based on urine output criteria only; ARBs: Angiotensin receptor blockers; AUC-ROC: Area under the curve of the receiver operating characteristic curve; BMI: Body mass index; CI: Confidence interval; CKD: Chronic kidney disease; CKRT: Continuous kidney replacement therapy; COPD: Chronic obstructive pulmonary disease; COVID: Coronavirus disease; CRP: C-reactive protein; CV: Cardiovascular; d: Day; ECMO: Extracorporeal membrane oxygenation; eGFR: Estimated glomerular filtration rate; FIO₂: Fraction of inspired oxygen; GM-CSF: Granulocyte-macrophage colony-stimulating factor; HFO: High-flow oxygen; hosp: Hospital; ICU: Intensive care unit; IHD: Intermittent hemodialysis; IL: Interleukin; Immuno: Immune compromised; IMV: Invasive mechanical ventilation; KDIGO: Kidney disease: improving global outcomes; KRT: Kidney replacement therapy; LOS: Length of stay; MAP: Mean arterial pressure; MDRD: Modification of diet in renal disease; mmHg: Millimeters of mercury; NIV: Noninvasive ventilation; NSAIDs: Nonsteroidal anti-inflammatory drugs; PaO₂: Arterial oxygen pressure; y: Year.

Supplementary Information

The online version contains supplementary material available at <https://doi.org/10.1186/s13054-022-04086-x>.

Additional file 1. COVID-AKI-Belgium.

Acknowledgements

We would like to thank all contributors to this study (Additional file 1: acknowledgements).

Author contributions

EH and GDV led the study conception and design. Material preparation, data collection and analysis were performed by EH, WV and HS. The first draft of the manuscript was written by HS, and all authors commented on previous versions of the manuscript. All authors read and approved the final manuscript.

Funding

None.

Availability of data and materials

All data and materials generated during the current study are available from the corresponding author on reasonable request.

Declarations

Ethical approval and consent to participate

This study was approved by the Ethics Committee (EC) of the participating hospitals. The EC of the Ghent University Hospital acted as central EC (BC-08285). Informed consent of participants was waived. This study was conducted in accordance with the ethical and scientific principles of Good Clinical Practice.

Consent for publication

Not applicable.

Competing interests

EH received Speakers fees from Alexion, Sopachem and Astute Medical paid to the institution and a travel grant from AM Pharma. All other authors declare no conflicts of interest.

Author details

¹Department of Intensive Care Medicine, Department of Internal Medicine and Pediatrics, Ghent University Hospital, Ghent University, Corneel Heymanslaan 10, 9000 Ghent, Belgium. ²Department of Anesthesiology, Intensive Care Medicine, Emergency Medicine and Pain Medicine, Ziekenhuis Oost Limburg ZOL, Genk, Belgium. ³Department of Intensive Care Medicine, AZ Turnhout, Turnhout, Belgium. ⁴Department of Anaesthesiology and Critical

Care Medicine, AZ Sint-Jan Brugge-Oostende AV, Brugge, Belgium. ⁵Department of Intensive Care Medicine and Anaesthesiology, Jessa Hospital, Hasselt, Belgium. ⁶Department of Intensive Care Medicine, AZ Delta, Roeselare, Belgium. ⁷Department of Intensive Care Medicine, University Hospitals Leuven, Leuven, Belgium. ⁸Laboratory of Intensive Care Medicine, Department of Cellular and Molecular Medicine, KU Leuven, Leuven, Belgium. ⁹Department of General Internal Medicine, Medical Intensive Care Unit, University Hospitals Leuven, Leuven, Belgium. ¹⁰Faculty of Medicine and Life Sciences, UHasselt, LCRC, Diepenbeek, Belgium. ¹¹Research Foundation-Flanders (FWO), Brussels, Belgium.

Received: 7 April 2022 Accepted: 2 July 2022

Published online: 25 July 2022

References

- Panel C-TG. National Institute of Health; 2021. <https://files.covid19treatmentguidelines.nih.gov/guidelines/covid19treatmentguidelines.pdf>
- COVID-19 Map [Internet]. Johns Hopkins Coronavirus Resource Center; 2021. <https://coronavirus.jhu.edu/map.html>
- Lumlertgul N, Pirondini L, Cooney E, Kok W, Gregson J, Camporota L, et al. Acute kidney injury prevalence, progression and long-term outcomes in critically ill patients with COVID-19: a cohort study. *Ann Intensive Care*. 2021;11(1):123. <https://doi.org/10.1186/s13613-021-00914-5>.
- Bayrakci N, Ozkan G, Sakaci M, Sedef S, Erdem I, Tuna N, et al. The incidence of acute kidney injury and its association with mortality in patients diagnosed with COVID-19 followed up in intensive care unit. *Ther Apheresis Dial Off Peer-Rev J Int Soc Apheresis Jpn Soc Apheresis Jpn Soc Dial Ther*. 2022. <https://doi.org/10.1111/1744-9987.13790>.
- Yu Y, Xu D, Fu S, Zhang J, Yang X, Xu L, et al. Patients with COVID-19 in 19 ICUs in Wuhan, China: a cross-sectional study. *Crit Care (Lond Engl)*. 2020;24(1):219. <https://doi.org/10.1186/s13054-020-02939-x>.
- Chand S, Kapoor S, Orsi D, Fazzari MJ, Tanner TG, Umeh GC, et al. COVID-19-associated critical illness-report of the first 300 patients admitted to intensive care units at a New York City Medical Center. *J Intensive Care Med*. 2020;35(10):963–70. <https://doi.org/10.1177/0885066620946692>.
- Nadim MK, Forni LG, Mehta RL, Connor MJ Jr, Liu KD, Ostermann M, et al. COVID-19-associated acute kidney injury: consensus report of the 25th Acute Disease Quality Initiative (ADQI) Workgroup. *Nat Rev Nephrol*. 2020;16(12):747–64. <https://doi.org/10.1038/s41581-020-00356-5>.
- KDIGO. KDIGO clinical practice guideline for acute kidney injury. *Kidney Int Suppl*. 2012;2:1–138.
- Chawla LS, Bellomo R, Bihorac A, Goldstein SL, Siew ED, Bagshaw SM, et al. Acute kidney disease and renal recovery: consensus report of the Acute Disease Quality Initiative (ADQI) 16 Workgroup. *Nat Rev Nephrol*. 2017;13(4):241–57. <https://doi.org/10.1038/nrneph.2017.2>.
- Lameire NH, Levin A, Kellum JA, Cheung M, Jadoul M, Winkelmayer WC, et al. Harmonizing acute and chronic kidney disease definition and classification: report of a Kidney Disease: Improving Global Outcomes (KDIGO) Consensus Conference. *Kidney Int*. 2021;100(3):516–26. <https://doi.org/10.1016/j.kint.2021.06.028>.
- Altman DG, Altman DG, Machin D, Altman DG. *Statistics with confidence*. 2nd ed. London: BMJ; 2000. p. 200.
- Hoste EA, Clermont G, Kersten A, Venkataraman R, Angus DC, De Bacquer D, et al. RIFLE criteria for acute kidney injury are associated with hospital mortality in critically ill patients: a cohort analysis. *Crit Care (Lond Engl)*. 2006;10(3):R73. <https://doi.org/10.1186/cc4915>.
- Hoste EA, Bagshaw SM, Bellomo R, Cely CM, Colman R, Cruz DN, et al. Epidemiology of acute kidney injury in critically ill patients: the multinational AKI-EPI study. *Intensive Care Med*. 2015;41(8):1411–23. <https://doi.org/10.1007/s00134-015-3934-7>.
- Nisula S, Kaukonen KM, Vaara ST, Korhonen AM, Poukkanen M, Karlsson S, et al. Incidence, risk factors and 90-day mortality of patients with acute kidney injury in Finnish intensive care units: the FINNAKI study. *Intensive Care Med*. 2013;39(3):420–8. <https://doi.org/10.1007/s00134-012-2796-5>.
- Chan L, Chaudhary K, Saha A, Chauhan K, Vaid A, Zhao S, et al. AKI in hospitalized patients with COVID-19. *J Am Soc Nephrol*. 2021;32(1):151–60. <https://doi.org/10.1681/ASN.2020050615>.
- Naar L, Langeveld K, El Moheb M, El Hechi MW, Alser O, Kapoen C, et al. experience of 206 consecutive patients. *Ann Surg*. 2020;272(4):e280–1. <https://doi.org/10.1097/SLA.0000000000004319>.
- Alser O, Mokhtari A, Naar L, Langeveld K, Breen KA, El Moheb M, et al. Multisystem outcomes and predictors of mortality in critically ill patients with COVID-19: demographics and disease acuity matter more than comorbidities or treatment modalities. *J Trauma Acute Care Surg*. 2021;90(5):880–90. <https://doi.org/10.1097/TA.0000000000003085>.
- Geri G, Darmon M, Zafrani L, Fartoukh M, Voiriot G, Le Marec J, et al. Acute kidney injury in SARS-CoV2-related pneumonia ICU patients: a retrospective multicenter study. *Ann Intensive Care*. 2021;11(1):86. <https://doi.org/10.1186/s13613-021-00875-9>.
- Wang F, Ran L, Qian C, Hua J, Luo Z, Ding M, et al. Epidemiology and Outcomes of Acute Kidney Injury in COVID-19 patients with acute respiratory distress syndrome: a multicenter retrospective study. *Blood Purif*. 2021;50(4–5):499–505. <https://doi.org/10.1159/000512371>.
- Sharma P, Ng JH, Bijol V, Jhaveri KD, Wanchoo R. Pathology of COVID-19-associated acute kidney injury. *Clin Kidney J*. 2021;14(Suppl 1):i30–9. <https://doi.org/10.1093/ckj/sfab003>.
- Legrand M, Bell S, Forni L, Joannidis M, Koynar JL, Liu K, et al. Pathophysiology of COVID-19-associated acute kidney injury. *Nat Rev Nephrol*. 2021;17(11):751–64. <https://doi.org/10.1038/s41581-021-00452-0>.
- Werion A, Belkhir L, Perrot M, Schmit G, Aydin S, Chen Z, et al. SARS-CoV-2 causes a specific dysfunction of the kidney proximal tubule. *Kidney Int*. 2020;98(5):1296–307. <https://doi.org/10.1016/j.kint.2020.07.019>.
- Scherer JS, Qian Y, Rau ME, Soomro QH, Sullivan R, Linton J, et al. Utilization of palliative care for patients with COVID-19 and acute kidney injury during a COVID-19 surge. *Clin J Am Soc Nephrol: CJASN*. 2022;17(3):342–9. <https://doi.org/10.2215/CJN.11030821>.
- Investigators S-A, Canadian Critical Care Trials G, Australian, New Zealand Intensive Care Society Clinical Trials G, United Kingdom Critical Care Research G, Canadian Nephrology Trials N, et al. Timing of initiation of renal-replacement therapy in acute kidney injury. *N Engl J Med*. 2020;383(3):240–51. <https://doi.org/10.1056/NEJMoa2000741>.
- Barbar SD, Clere-Jehl R, Bourredjem A, Hernu R, Montini F, Bruyere R, et al. Timing of renal-replacement therapy in patients with acute kidney injury and sepsis. *N Engl J Med*. 2018;379(15):1431–42. <https://doi.org/10.1056/NEJMoa1803213>.
- Gaudry S, Hajage D, Martin-Lefevre L, Lebbah S, Louis G, Moschietto S, et al. Comparison of two delayed strategies for renal replacement therapy initiation for severe acute kidney injury (AKIKI 2): a multi-centre, open-label, randomised, controlled trial. *Lancet (Lond, Engl)*. 2021;397(10281):1293–300. [https://doi.org/10.1016/S0140-6736\(21\)00350-0](https://doi.org/10.1016/S0140-6736(21)00350-0).
- Naorungroj T, Neto AS, Yanase F, Eastwood G, Wald R, Bagshaw SM, et al. Time to initiation of renal replacement therapy among critically ill patients with acute kidney injury: a current systematic review and meta-analysis. *Crit Care Med*. 2021;49(8):e781–92. <https://doi.org/10.1097/CCM.0000000000005018>.
- Xu J, Xie J, Du B, Tong Z, Qiu H, Bagshaw SM. Clinical characteristics and outcomes of patients with severe COVID-19 induced acute kidney injury. *J Intensive Care Med*. 2021;36(3):319–26. <https://doi.org/10.1177/0885066620970858>.
- Md Ralib A, Pickering JW, Shaw GM, Endre ZH. The urine output definition of acute kidney injury is too liberal. *Crit Care (Lond, Engl)*. 2013;17(3):R112. <https://doi.org/10.1186/cc12784>.
- Kellum JA, Sileanu FE, Murugan R, Lucko N, Shaw AD, Clermont G. Classifying AKI by urine output versus serum creatinine level. *J Am Soc Nephrol*. 2015;26(9):2231–8. <https://doi.org/10.1681/ASN.2014070724>.
- Macedo E, Malhotra R, Bouchard J, Wynn SK, Mehta RL. Oliguria is an early predictor of higher mortality in critically ill patients. *Kidney Int*. 2011;80(7):760–7. <https://doi.org/10.1038/ki.2011.150>.
- McCullough PA, Bouchard J, Waikar SS, Siew ED, Endre ZH, Goldstein SL, et al. Implementation of novel biomarkers in the diagnosis, prognosis, and management of acute kidney injury: executive summary from the tenth consensus conference of the Acute Dialysis Quality Initiative (ADQI). *Contrib Nephrol*. 2013;182:5–12. <https://doi.org/10.1159/000349962>.
- Ostermann M, Joannidis M. Acute kidney injury 2016: diagnosis and diagnostic workup. *Crit Care (Lond, Engl)*. 2016;20(1):299. <https://doi.org/10.1186/s13054-016-1478-z>.

34. Kellum JA, Sileanu FE, Bihorac A, Hoste EA, Chawla LS. Recovery after acute kidney injury. *Am J Respir Crit Care Med*. 2017;195(6):784–91. <https://doi.org/10.1164/rccm.201604-0799OC>.
35. Papoutsis E, Giannakoulis VG, Xourgia E, Routsis C, Kotanidou A, Siempos II. Effect of timing of intubation on clinical outcomes of critically ill patients with COVID-19: a systematic review and meta-analysis of non-randomized cohort studies. *Crit Care (Lond, Engl)*. 2021;25(1):121. <https://doi.org/10.1186/s13054-021-03540-6>.
36. Fierens J, De Bus L, Colpaert K, Boelens J, Gadeyne B, Decruyenaere J, et al. Antimicrobial prescription in severe COVID-19 and CAP: a matched case-control study. *Acta Clin Belg*. 2021. <https://doi.org/10.1080/17843286.2021.1996068>.
37. De Bruyn A, Verellen S, Bruckers L, Geebelen L, Callebaut I, De Pauw I, et al. Secondary infection in COVID-19 critically ill patients: a retrospective single-center evaluation. *BMC Infect Dis*. 2022;22(1):207. <https://doi.org/10.1186/s12879-022-07192-x>.
38. Verweij PE, Bruggemann RJM, Azoulay E, Bassetti M, Blot S, Buil JB, et al. Taskforce report on the diagnosis and clinical management of COVID-19 associated pulmonary aspergillosis. *Intensive Care Med*. 2021;47(8):819–34. <https://doi.org/10.1007/s00134-021-06449-4>.

Publisher's Note

Springer Nature remains neutral with regard to jurisdictional claims in published maps and institutional affiliations.

Ready to submit your research? Choose BMC and benefit from:

- fast, convenient online submission
- thorough peer review by experienced researchers in your field
- rapid publication on acceptance
- support for research data, including large and complex data types
- gold Open Access which fosters wider collaboration and increased citations
- maximum visibility for your research: over 100M website views per year

At BMC, research is always in progress.

Learn more biomedcentral.com/submissions

