



RESEARCH

Open Access

Diagnosis of secondary amyloidosis in alkaptonuria

Lia Millucci^{1†}, Lorenzo Ghezzi^{1†}, Giulia Bernardini^{1†}, Daniela Braconi¹, Pietro Lupetti², Federico Peretto³, Maurizio Orlandini¹ and Annalisa Santucci^{1*}

Abstract

Background: Alkaptonuria (AKU) is an inborn error of catabolism due to a deficient activity of homogentisate 1,2-dioxygenase. Patients suffer from a severe arthropathy, cardiovascular and kidney disease but other organs are affected, too. We found secondary amyloidosis as a life-threatening complication in AKU, thus opening new perspectives for its treatment. We proved that methotrexate and anti-oxidants have an excellent efficacy to inhibit the production of amyloid in AKU model chondrocytes. Owing to the progressive and intractable condition, it seems important to detect amyloid deposits at an early phase in AKU and the choice of specimens for a correct diagnosis is crucial.

Methods: Ten AKU subjects were examined for amyloidosis; abdominal fat pad aspirates, labial salivary gland, cartilage and synovia specimens were analysed by CR, Th-T, IF, TEM.

Results: Amyloid was detected in only one abdominal fat pad specimen. However, all subjects demonstrated amyloid deposition in salivary glands and in other organ biopsies, indicating salivary gland as the ideal specimen for early amyloid detection in AKU.

Conclusions: This is, at the best of our knowledge, the first report providing correct indications on the diagnosis of amyloidosis in AKU, thus offering the possibility of treatment of such co-morbidity to AKU patients.

Virtual slides: The virtual slide(s) for this article can be found here: http://www.diagnosticpathology.diagnomx.eu/vs/13000_2014_185

Keywords: Serum amyloid A, Ochronosis, Secondary amyloidosis, Salivary gland, Periumbelical fat, Congo Red

Background

Amyloidosis is the deposition of insoluble protein aggregates either systemically or in a specific organ. Secondary (AA) amyloidosis is caused by a chronic infection or chronic inflammatory disease where deposits are made up of serum amyloid A (SAA) produced during inflammation.

We found SAA amyloidosis as a life-threatening complication in alkaptonuria (AKU) [1], an ultra-rare (1:250.000-1.000.000 incidence) autosomal recessive genetic disease due to a deficient activity of homogentisate 1,2-dioxygenase (HGD) leading to the accumulation of homogentisic acid (HGA). HGA-oxidized derivative benzoquinone acetic acid (BQA) forms deposits in the connective tissue, causing a pigmentation known as "ochronosis", leading to dramatic organ damage. A severe form of arthropathy is

the most common clinical presentation of AKU, but all the organs can be affected, too. AKU can be treated symptomatically during the early stages, whereas for end stages total joint and heart valve replacements may be required. Currently, there is no therapy for AKU, although a clinical trial with nitisinone is in progress.

AA amyloidosis is one of the most severe complications of several chronic rheumatic disorders [2,3] and is a secondary complication of AKU due to a chronic inflammatory status derived from HGA/BQA-induced oxidative stress [4-12]. SAA-amyloid in AKU co-localizes with ochronotic pigment [1], AKU is a complicated inflammatory multisystemic disease, and any body district expressing *HGD* may be affected [13].

Our findings on AKU as a novel AA amyloidosis opened new perspectives for its treatment. In fact, the suppression of SAA below 10 mg/L halts the progression of the disease and is associated with prolonged survival, reversal of amyloid deposition and recovery of organ function [14].

* Correspondence: annalisa.santucci@unisi.it

†Equal contributors

¹Dipartimento di Biotecnologie, Chimica e Farmacia, Università degli Studi di Siena, via Aldo Moro 2, 53100 Siena, Italy

Full list of author information is available at the end of the article

Methotrexate [1] and anti-oxidants [9] proved to have an excellent efficacy to inhibit the production of amyloid in AKU model chondrocytes, suggesting their introduction in AKU therapy.

Owing to AKU progressive and intractable condition, it is crucial to detect amyloid deposits at an early phase. As ascertained in other secondary amyloidosis, if SAA deposition cannot be stopped or delayed, serious life-threatening problems can arise [14]. Therefore, SAA amyloidosis should be diagnosed as early as possible and the clinicians treating AKU patients need an easy routine reproducible fast procedure that can be repeated at intervals.

In this work, ten AKU subjects were examined for amyloidosis in abdominal fat pad aspirates and labial salivary gland (LSG) biopsies. Amyloid was detected in only one abdominal fat pad specimen. However, all subjects demonstrated amyloid deposition in LSGs and in other organ biopsies. These results further support the concept that LSG may be the optimal specimen for early detection of amyloid in AKU and that LSG offers improved sensitivity in respect to fat pad aspirates in these patients.

This is, at the best of our knowledge, the first report providing correct indications on the diagnosis of amyloidosis in AKU, thus offering the possibility of treatment of such co-morbidity to AKU patients.

Methods

Procedures were approved by Siena University Hospital and national Ethics (Comitato Etico Policlinico Universitario di Siena, number GGP10058, date 21/07/2010) in accordance with 1975 Helsinki Declaration, revised in 2000 (52nd WMA General Assembly, Edinburgh, Scotland, October 2000). Informed consent was obtained from all patients.

All reagents were from Sigma-Aldrich (St. Louis, MO), if not differently specified.

LSG

After reviewing AKU patients' medical history and laboratory values (Table 1 and 2), a clinical examination was completed and each subject underwent two biopsies of clinically normal-appearing tissue in the oral cavity under local anesthesia (2% lidocaine with 1:100,000 epinephrine). Specimen 1 was taken from the left lateral surface of the tongue, containing mucosal and muscle tissue. Specimen 2 was taken from the labial mucosa on the left side of the lower lip, containing at least 2 to 3 minor salivary glands. Both specimens were formalin fixed and analyzed for histopathologic evaluation of amyloid.

Abdominal fat

Patients underwent a subcutaneous abdominal fat biopsy via fine-needle aspiration. Skin and subcutaneous tissue

around the umbilicus of the patients were anesthetized with 1% lidocaine. The fat was aspirated with an 18-gauge needle connected to a 20 ml syringe. At least two visible fragments of fat were placed on a glass slide and crushed into a single layer by pressing a second slide against the first. After the smears were dried in air at 50°C for at least 30 minutes and fixed with 20% formalin neutral buffer solution (Wako Pure Chemical, Osaka, Japan) for 5 minutes, these specimens were processed for the Congo Red staining.

Cartilage and synovia

Articular cartilage fragments, from AKU subjects who underwent surgery for joint replacement, were placed in 5% formaldehyde. Samples were alcohol dehydrated and paraffin embedded.

Aortic valve

Valve was obtained from an AKU subject who underwent biologic aortic valve replacement.

Prostatic calculus

The stone was from the prostate gland of an AKU subject who underwent surgical exploration for calculus removal.

Hematoxylin and Eosin (H&E) staining

Two sections (5 µm thickness) were obtained from each biopsy. Sections were stained with traditional hematoxylin/eosin (H/E) staining.

Congo Red (CR) staining

Romhányi's CR staining method modified according to Bély and Apáthy (2000) was adopted. 5 µm sections of fresh specimen were fixed in cooled 96% ethanol 10 min, rinsed in water, incubated in 1% CR for 40 min, washed in water, incubated 10 s in 1 mL 1% sodium hydroxide in 100 mL of 50% ethanol, incubated 30 s in Mayer's hematoxylin, sequentially washed in 50%, 75%, 95% ethanol, mounted and observed under a polarized light microscope (Zeiss Axio Lab.A1, Arese, Milano).

Thioflavin T (Th-T) staining

AKU LSG samples incubated in 1% Th-T [15,16] were mounted and observed under a fluorescence microscope (excitation 450 nm, emission 482 nm).

Fluorescence microscopy

AKU samples in paraffin were cut in 3–5 µm slices and double immunofluorescence stained with anti-SAA and anti-serum amyloid P (SAP) antibodies (Santa Cruz Biotechnology, CA). Nuclei were counter-stained with blue DAPI DNA stain (Abcam, Cambridge, UK).

Table 1 Alkaptonuria patients enrolled for the study and their characteristics

Features	Patient 1	Patient 2	Patient 3	Patient 4	Patient 5	Patient 6	Patient 7	Patient 8	Patient 9	Patient 10
Age (years)	71	60	63	42	60	58	42	38	65	55
Sex	F	F	F	F	M	M	M	F	F	F
<i>Serology</i>										
SAA mg/L	117.70	87.14	97.44	18.16	25.35	25.44	25.13	16.13	28.46	69.90
HGA plasma level μ mol/L	31.10	72.90	20.56	15.80	17.02	22.43	18.95	15.21	31.76	13.42
HGA urine level mmol/L	23.70	16.90	22.64	21.70	22.30	18.64	24.10	12.68	22.76	16.60
<i>Congo Red birefringence score</i>										
Abdominal fat	n.d.	-	-	-	-	-	-	-	n.d.	+
Salivary gland	+++	++	++	++	++	+++	++	+++	++	++
Synovia			+++							
Cartilage			+++		+++					
Aortic valve			+++		+++					
Prostatic stone					++					
<i>ThT fluorescence (+/-)</i>										
Salivary gland	positive	positive	positive	positive	positive	positive	positive	positive	positive	positive
Synovia			positive		positive					
Cartilage			positive		positive					
Aortic valve			positive							
Prostatic stone					n.d.					
<i>SAA immunohistology (+/-)</i>										
Salivary gland	positive	positive	positive	positive	positive	positive	positive	positive	positive	positive
Synovia		positive		positive		positive	positive			
Cartilage		positive	positive		positive	positive	positive			
Prostatic stone					positive					
Aortic valve			positive							
<i>SAP immunohistology (+/-)</i>										
Salivary gland	positive	positive	positive	positive	positive	positive	positive	positive	positive	positive
Synovia			positive		positive					
Cartilage			positive		positive					
Aortic valve			positive							
Prostatic stone					positive					
<i>TEM Amyloid abundance score</i>										
	+++	+++	++	+++	+++	+++	++	+++	++	+

F: female, M: male, n.d.: not determined. The patients were classified on the basis of Congo red intensity of staining (grades: +++, very intensive; ++, intensive; +, weak; -, no birefringence). The presence of amyloid deposits in LSG observed at TEM was evaluated as: +++ = very abundant, ++ = medium; + = faint. Positivity for ThT fluorescence and SAA and SAP immunohistology is also reported.

Transmission electron microscopy (TEM)

AKU specimens were fixed in 2.5% glutaraldehyde in 0.1 M cacodylate buffer (CB) pH 7.2 for 3 h at 4°C, post-fixed in 1% osmium tetroxide in CB for 2 hours at 4°C, ethanol dehydrated and embedded in a mixture of Epon-Araldite resins. Thin sections, obtained with a Reichert ultramicrotome, were stained with uranyl acetate and lead citrate and observed with a TEM Fei/Tecnaï G2 spirit at 80 Kv.

Results

Structural features of AKU salivary glands were first evaluated by means of H&E staining (representative images are presented in Figure 1A-B). Parenchyma was found to be compact only in some limited areas; by contrast, a number of vacuoles and a disrupted acinar structure were present in the vast majority of the specimen. All of the AKU salivary glands that were examined did not contain any trace of lymphocytic infiltration.

Table 2 Clinical features of AKU patients

Patient #	Date of selection (month/year)	Peripheral neuropathy	Orthostatic hypotension	Ventricular and atrial dilatation	chronic bacterial infection	Spondylarthropathy	Glossomegaly	Surgery
1	08/2011	y	y	y	n	y	y	Knee (r), shoulder (r) and hip (l) arthroplasty
2	10/2009	y	y	n	y	y	n	Knee (r, l), shoulder (r) and hip (r) arthroplasty
3	03/2012	n	y	n	n	y	n	Meniscus (r) surgical repair
4	04/2012	y	y	n	n	n	n	None
5	11/2012	y	y	n	y	y	n	Knee (l), and hip (l) arthroplasty
6	01/2013	y	n	n	y	y	n	Knee (r) arthroplasty
7	05/2012	n	y	n	n	n	n	None
8	02/2012	y	y	y	n	y	n	Knee (l) arthroplasty
9	03/2013	y	n	y	y	y	y	Knee (r) and tendon ankle fracture (l)
10	11/2011	y	y	n	n	y	y	Knee (r), and hip (l) arthroplasty

No patient was receiving immunosuppressive or chemotherapy treatment. y = yes; n = no; r = right; l = left.

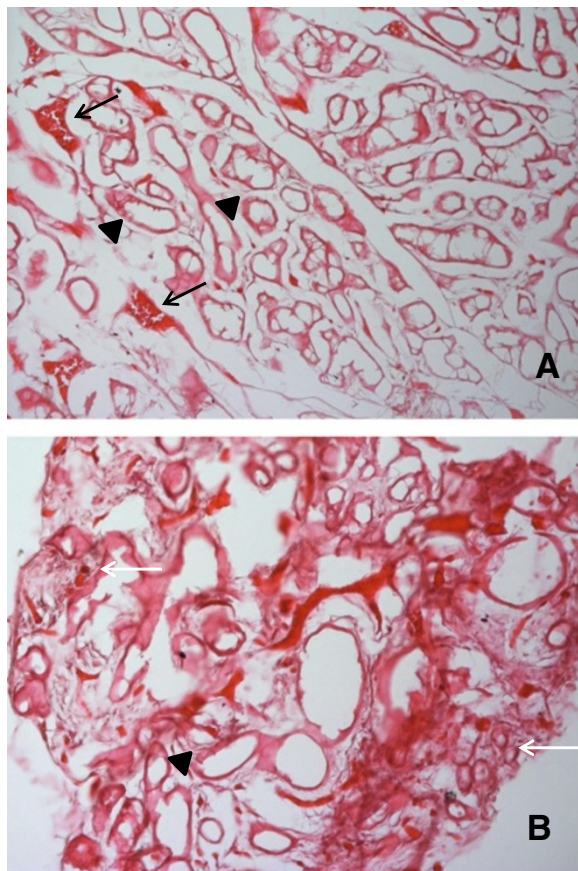


Figure 1 H/E staining of AKU salivary gland. Some striated ducts (arrowheads), secretory acini (white arrows) and red blood cells (black arrows) are indicated. Only representative images are shown. Magnification: **A**: 20x; **B**: 40x.

In order to diagnose amyloidosis in AKU patients, diagnostic laboratories adopted perumbelical fat aspirate CR staining [17] that unfortunately proved to be unsuitable for the detection of amyloid deposits in AKU patients. Indeed, we studied abdominal fat pad aspirates and labial salivary gland biopsies from 10 AKU patients in whom subsequent other tissue biopsies for confirmation of AA amyloidosis were also available. All cases were suspected to have SAA deposits, but nine of them had negative results on abdominal fat pad aspirates evaluated by polarizing microscopy of CR stained sections (not shown). CR staining of fat aspirates from three different hospital laboratories were compared in all samples for studying inter observer reproducibility and gave negative diagnosis of amyloidosis in nine cases out of ten.

Once CR staining was adopted on AKU LSGs, the results were unequivocally positive for all ten patients (Figure 2A).

To confirm the presence of amyloid aggregates in LSG from AKU patients, we performed the Th-T assay. Th-T fluorescence was evident in all examined samples (10/10)

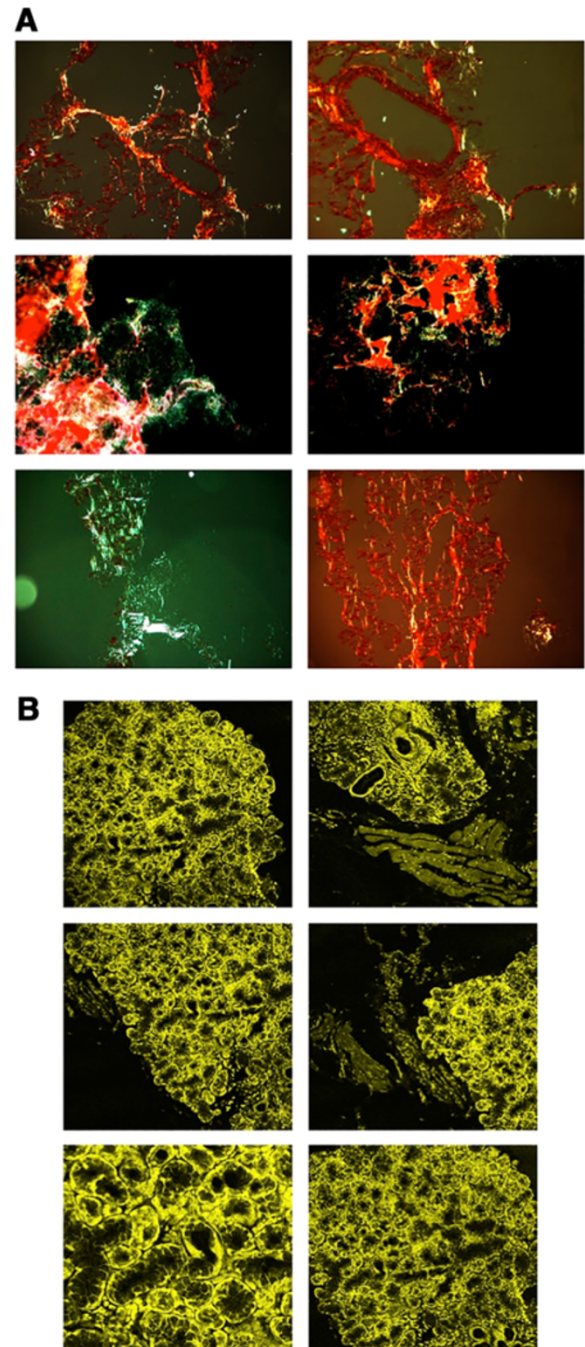


Figure 2 Evidence of amyloid deposits in AKU salivary glands.

A) Congo Red staining of AKU labial salivary glands amyloid deposits. CR stain viewed under polarized light detected the presence of diffuse amyloid deposits within AKU salivary gland tissue.

Magnification 20x. Representative images from a triplicate set are shown. **B)** Th-T fluorescence of AKU labial salivary glands amyloid deposits shown by confocal microscopy. Analogous results were obtained from specimens of other patients. Bar: 22 μ m.

Representative images from a triplicate set are shown.

(Figure 2B). Moreover, by means of immunofluorescence techniques, we assessed the presence of SAA deposition in LSG (Figure 3).

Ultrastructural analysis by TEM of AKU LSGs (the current 'gold standard' for detecting amyloid deposits also in ambiguous cases), confirmed the massive presence of amyloid fibrils in all specimens. Amyloid deposits in LSG were abundant in six patients, moderate in three, and mild in one (Table 1). Figure 4 shows fine fibrils, approximately 10 nm in diameter, located in the secretory stroma of AKU salivary glands of patient #1, adjacent to the basement membrane. The fibrils were also present in the interstitial connective tissue, interspersed with collagen fibrils (Figure 4A) and around interlobular ducts of salivary glands of all patients. In all observed samples, the glandular stroma contained numerous broken collagen fibrils strictly interconnected

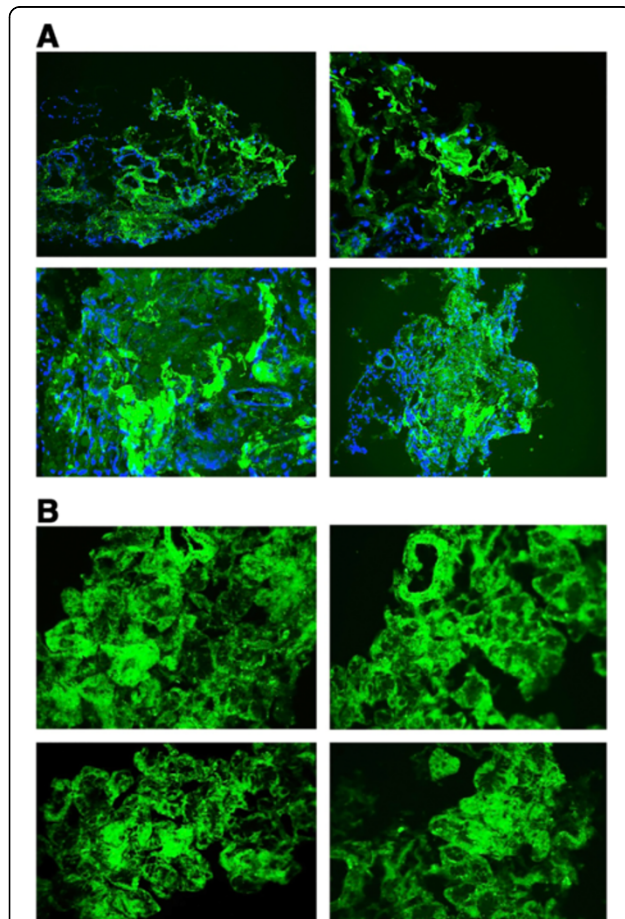


Figure 3 SAA and SAP in AKU salivary glands. A) Immunofluorescence staining of SAA deposition in AKU labial salivary glands. Blue indicates DAPI stained nuclei. Magnification 20x. Representative images from a triplicate set are shown. **B)** Immunofluorescence staining of SAP deposition in AKU labial salivary glands. Magnification 20x. Representative images from a triplicate set are shown.

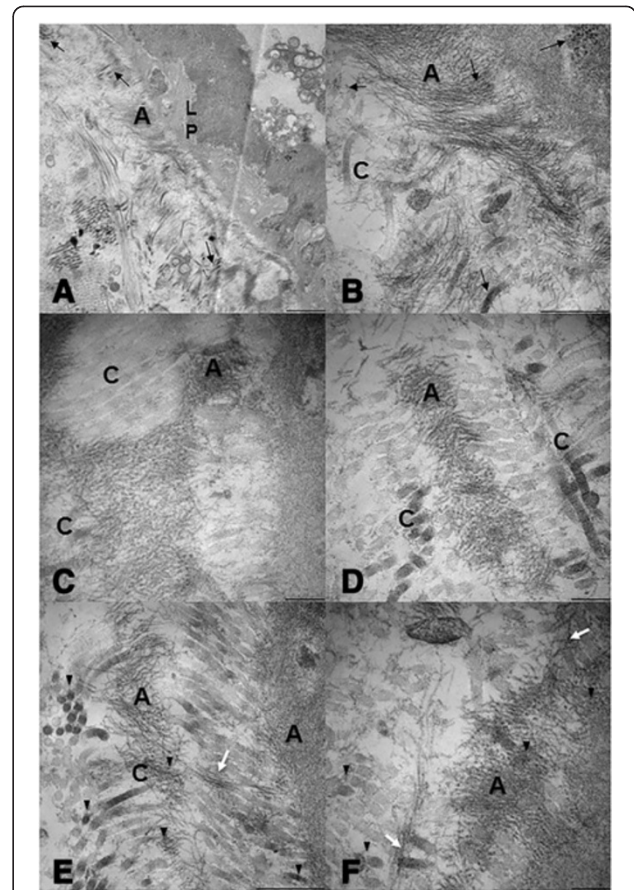


Figure 4 Electron micrographs of AKU salivary glands. A) Electron micrograph showing fine amyloid fibrils (A) approximately 10 nm in diameter located in close relation to the lamina (LP) of the secretory end-pieces as well as in the interstitial connective tissue stroma of AKU labial salivary gland. Pigment granules are visible amongst collagen fibrils in transverse and longitudinal section (black arrows). **B-C)** Electron micrographs of another AKU labial salivary gland showing a region of the interstitial glandular stroma that contains fine amyloid fibrils (A), approximately 10 nm in diameter, interspersed with bundles of collagen fibrils (C). Pigment deposits are present on broken collagen fibers (black arrows) and scattered between amyloid fibrils. To be note that amyloid fibrils appear superimposed to collagen fibers in different area of the tissue. **D-F)** Electron micrograph of a third AKU labial salivary gland showing the glandular stroma containing finely fibrillar amyloid material (A). In photo **E)** collagen fibers in transverse section are shown (arrowheads), many of which presenting electron dense ochronotic deposits located amongst fibers. In photos **E-F)**, dark ochronotic pigment granules are indicated (arrowheads) scattered amongst the collagen fiber as well as amongst amyloid fibrils. Some deposits can be observed located within amyloid bundles of fibrils and bridging between collagen fibers (white arrows). A: amyloid; C: collagen; LP lamina propria. Photo **A)** is from patient #2, photos **B-C)** are from patient #5 and photos **D-F)** are from patient #7. Bars, **A:** 5 μ m, **B, C** and **E:** 2.5 μ m, **D** and **F:** 1 μ m.

with amyloid fibrils arranged in a scattered manner. Moreover, thanks to TEM analysis, it was possible to see evident pigment traces finely sprinkled over the whole tissue (Figure 4B-F). In particular, pigment deposits could be

seen as individual “drop-like” deposits between the collagen fibers and also scattered over amyloid bundles of fibrils.

Our study showed, for the first time, that, analogously to other AKU tissues [1,9], also in LSG amyloid and pigment were strictly interconnected and that collagen fibrils seemed to feel the effect of destructive action of both pigment and amyloid, appearing constantly broken and damaged when sprinkled and invaded by these two elements. The presence of ochronotic pigmentation in less commonly

examined areas of human body, such as glandular tissues, may provide insights into the mechanisms of pigment formation and deposition. Here, we presented evidence to support the probable association of HGA oxidised products with collagen and the existence of extracellular mechanisms, like as amyloid deposition, mediating ochronotic pigmentation that overlaps in tissues.

Confirmatory evaluation of SAA- and SAP-amyloid co-presence (Figure 5A) and TEM observation of amyloid fibrils (Figure 5B) in other AKU specimens was possible.

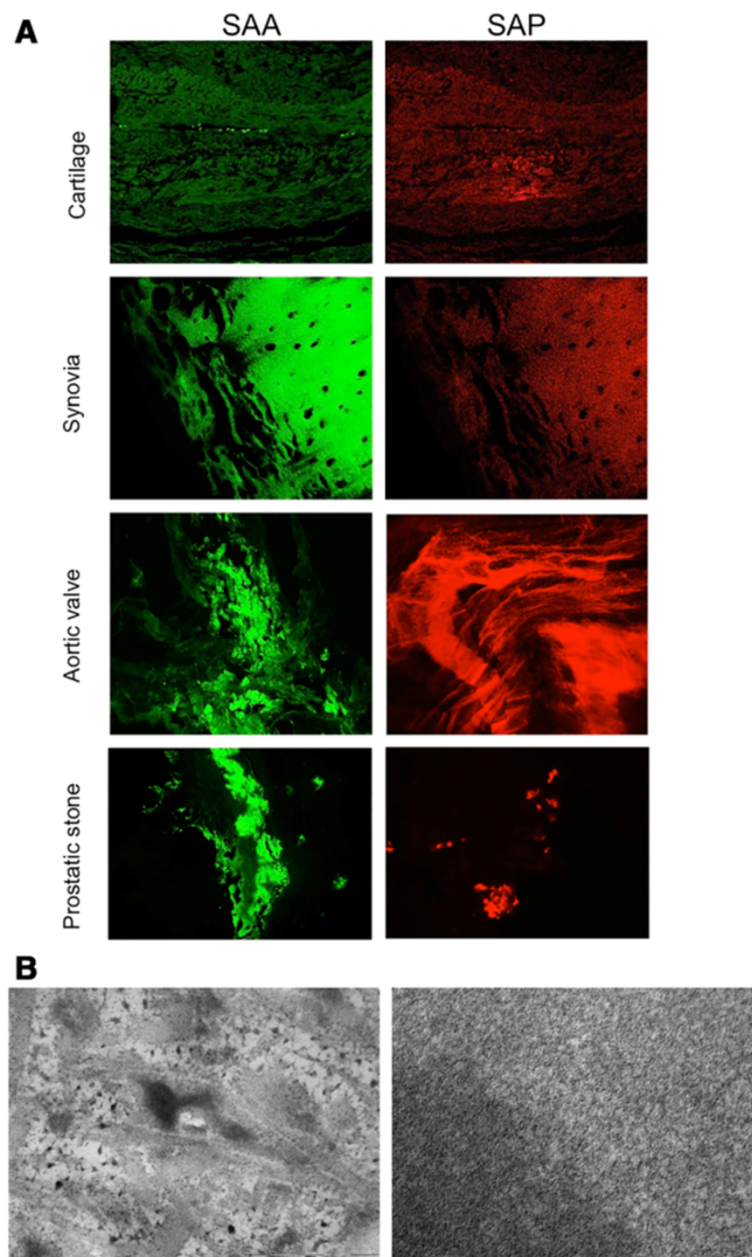


Figure 5 Confirmation of amyloidosis in other AKU tissues. A) Positive staining for SAA-and SAP-amyloid in cartilage, synovia, aortic valve and prostatic stone. **B)** TEM observation of amyloid deposits in cartilage (left image: bar 500 nm) and aortic valve (right image: bar 50 nm).

Discussion

The tissue source impacts the likelihood of discovering amyloid deposits. Bone marrow biopsy sensitivity has been estimated at 63% [18]. Kidney, liver, or cardiac biopsies have sensitivity as high as 87–98% but are more invasive [18]. Rectal biopsy sensitivity ranges from 69% to 97% depending upon the quantity of tissue sampled. Tissue source also impacts amyloid typing. The chemical type of amyloid that deposits in AKU is amyloid A protein and since this type of amyloid involves diffusely the mucosa and the submucosa [19], it may be better to prefer location as the oral cavity or gastrointestinal tract to detect them. In particular, LSG biopsy is less invasive and cheaper than examination of rectal mucosa. In the last years, various studies have demonstrated the utility of LSG biopsy for the detection of amyloid with correlation to secondary systemic amyloidosis [20,21].

Amyloid deposition is a dynamic process that can progress and stabilize. Quantification of SAA concentration in tissue on regular occasions will similarly reflect the accumulation, stabilization or even regression of deposited amyloid. Abdominal subcutaneous fat tissue seems to be very suitable for this purpose [17,22], because it is easy to obtain by aspiration, but, at least in some cases, it has limited sensitivity and turned out inadequate [23–25]. In fact, subcutaneous abdominal fat CR staining is positive in approximately 80% of patients with AL amyloidosis and less than 65% of patients with AA amyloidosis [24]. Thus, the negative result on staining of the abdominal-fat aspirate in AKU cases does not necessarily indicate negativity of amyloidosis at the diagnosis. Moreover, Tribe [26] did not recommend the use of subcutaneous fat aspiration because he reported that “fat is rarely involved”. Libbey et al. [17] reported a 20% false negative result rate. It thus appears that abdominal fat aspiration is a method not enough sensitive to detect AA in rheumatic diseases.

In all ten AKU samples, amyloid deposits were identified so underlining the high sensitivity of LSG biopsy in the diagnosis of amyloidosis, even in the absence of other symptoms.

Conclusions

LSG biopsy appears as a simple and safe method to detect generalized amyloidosis in patients with a chronic inflammatory disease such as AKU. The results of our pilot study demonstrate that the prevalence of occult amyloid deposition in patients with AKU may be very high. Since a prompt detection of amyloid may have significant clinical and economic implications in AKU, it is fundamental to establish accurately the association of synchronous amyloidosis. In our limited size sample, due to ultra-rarity of the disease, the majority of AKU patients had no detectable amyloid deposition on fat pad aspirate. However, we were able to detect amyloid

deposition in minor LSG in all AKU patients. This suggests that subclinical amyloid deposition may be more easily detected on oral biopsies, and the oral cavity may be the preferred biopsy site for detecting amyloid deposition in AKU patients with no symptoms of systemic amyloidosis.

Our study suggests that minor LSG, especially when the biopsy of affected are lacking, may be the gold standard for the diagnosis of SAA amyloidosis in AKU.

Abbreviations

AKU: Alkaptonuria; BQA: Benzoquinone acetate; CR: Congo red; HGA: Homogentisic acid; HGD: Homogentisate 1,2-dioxygenase; LSG: Labial salivary gland; SAA: Serum amyloid A; SAP: Serum amyloid P; Th-T: Thioflavin T.

Competing interests

The authors declare that they have no competing interests.

Authors' contributions

LM: conception and design of the study, acquisition of data, collection and assembly of data, analysis and interpretation of data, drafting the article, final approval of the version to be submitted. LG: acquisition of data, drafting the article, final approval of the version to be submitted. GB: acquisition of data, drafting the article, final approval of the version to be submitted. DB: acquisition of data, drafting the article, final approval of the version to be submitted. PL: acquisition of data, drafting the article, final approval of the version to be submitted. FP: provision of study materials, analysis and interpretation of data, revising critically for important intellectual content, final approval of the version to be submitted. MO: acquisition of data, drafting the article, final approval of the version to be submitted. AS: conception and design of the study, acquisition of data, analysis and interpretation of data, drafting the article, revising it critically for important intellectual content, obtaining of funding, final approval of the version to be submitted, responsible for the integrity of the work as a whole. All authors read and approved the final manuscript.

Acknowledgments

This work has been supported by Telethon Italy grant GGP10058. The authors thank alkaptonuric patients who generously donated samples for the present study, AimAKU (Associazione Italiana Malati di Alcaptonuria, ORPHA263402), Toscana Life Sciences Orphan_1 project and Fondazione Monte dei Paschi di Siena 2008–2010, Drs. M. Benucci, A. Mannoni, E. Selvi. The authors also thank Dr. Elisa Vannuccini for TEM analysis.

Author details

¹Dipartimento di Biotecnologie, Chimica e Farmacia, Università degli Studi di Siena, via Aldo Moro 2, 53100 Siena, Italy. ²Dipartimento di Scienze della Vita, Università degli Studi di Siena, via A. Moro 2, 53100 Siena, Italy. ³Centro di Riferimento Regionale per lo Studio dell'Amiloidosi, Dipartimento di Medicina Sperimentale e Clinica, viale Pieraccini 18, Università degli Studi di Firenze, 50139 Firenze, Italy.

Received: 12 June 2014 Accepted: 7 September 2014

Published online: 26 September 2014

References

1. Millucci L, Spreafico A, Tinti L, Braconi D, Ghezzi L, Paccagnini E, Bernardini G, Amato L, Laschi M, Selvi E, Galeazzi M, Mannoni A, Benucci M, Lupetti P, Chellini F, Orlandini M, Santucci A: **Alkaptonuria is a novel human secondary amyloidogenic disease.** *Biochim Biophys Acta* 1822, 2012:1682–1691.
2. Lachmann HJ, Goodman HJ, Gilbertson JA, Gallimore JR, Sabin CA, Gillmore JD, Hawkins PN: **Natural history and outcome in systemic AA amyloidosis.** *N Engl J Med* 2007, **356**:2361–2371.
3. Obici L, Raimondi S, Lavatelli F, Bellotti V, Merlini G: **Susceptibility to AA amyloidosis in rheumatic diseases: a critical overview.** *Arthritis Rheum* 2009, **61**:1435–1440.
4. Bernardini G, Braconi D, Spreafico A, Santucci A: **Post-genomics of bone metabolic dysfunctions and neoplasias.** *Proteomics* 2012, **12**:708–721.

5. Braconi D, Bernardini G, Bianchini C, Laschi M, Millucci L, Amato L, Tinti L, Serchi T, Chellini F, Spreafico A, Santucci A: **Biochemical and proteomic characterization of alkaptonuric chondrocytes.** *J Cell Physiol* 2012, **227**:3333–3343.
6. Braconi D, Bianchini C, Bernardini G, Laschi M, Millucci L, Spreafico A, Santucci A: **Redox-proteomics of the effects of homogentisic acid in an in vitro human serum model of alkaptonuric ochronosis.** *J Inherit Metab Dis* 2011, **34**:1163–1176.
7. Braconi D, Laschi M, Amato L, Bernardini G, Millucci L, Marcolongo R, Cavallo G, Spreafico A, Santucci A: **Evaluation of anti-oxidant treatments in an in vitro model of alkaptonuric ochronosis.** *Rheumatology (Oxford)* 2010, **49**:1975–1983.
8. Braconi D, Laschi M, Taylor AM, Bernardini G, Spreafico A, Tinti L, Gallagher JA, Santucci A: **Proteomic and redox-proteomic evaluation of homogentisic acid and ascorbic acid effects on human articular chondrocytes.** *J Cell Biochem* 2010, **111**:922–932.
9. Spreafico A, Millucci L, Ghezzi L, Geminiani M, Braconi D, Amato L, Chellini F, Frediani B, Moretti E, Collodel G, Bernardini G, Santucci A: **Antioxidants inhibit SAA formation and pro-inflammatory cytokine release in a human cell model of alkaptonuria.** *Rheumatology (Oxford)* 2013, **52**:1667–1673.
10. Tinti L, Spreafico A, Braconi D, Millucci L, Bernardini G, Chellini F, Cavallo G, Selvi E, Galeazzi M, Marcolongo R, Gallagher J, Santucci A: **Evaluation of antioxidant drugs for the treatment of ochronotic alkaptonuria in an in vitro human cell model.** *J Cell Physiol* 2010, **225**:84–91.
11. Tinti L, Spreafico A, Chellini F, Galeazzi M, Santucci A: **A novel ex vivo organotypic culture model of alkaptonuria-ochronosis.** *Clin Exp Rheumatol* 2011, **29**:693–696.
12. Tinti L, Taylor AM, Santucci A, Wlodarski B, Wilson PJ, Jarvis JC, Fraser WD, Davidson JS, Ranganath LR, Gallagher JA: **Development of an in vitro model to investigate joint ochronosis in alkaptonuria.** *Rheumatology (Oxford)* 2011, **50**:271–277.
13. Laschi M, Tinti L, Braconi D, Millucci L, Ghezzi L, Amato L, Selvi E, Spreafico A, Bernardini G, Santucci A: **Homogentisate 1,2 dioxygenase is expressed in human osteoarticular cells: implications in alkaptonuria.** *J Cell Physiol* 2012, **227**:3254–3257.
14. Nakamura T: **Clinical strategies for amyloid A amyloidosis secondary to rheumatoid arthritis.** *Mod Rheumatol* 2008, **18**:109–118.
15. Picken MM, Herrera GA: **Thioflavin T Stain: An Easier and More Sensitive Method for Amyloid Detection.** In *Amyloid and Related Disorders. Current Clinical Pathology*. Edited by Picken MM, Dogan A, Herrera GA. Totowa, NJ: Springer - Humana Press; 2012:187–189.
16. Saeed SM, Fine G: **Thioflavin-T for amyloid detection.** *Am J Clin Pathol* 1967, **47**:588–593.
17. Libbey CA, Skinner M, Cohen AS: **Use of abdominal fat tissue aspirate in the diagnosis of systemic amyloidosis.** *Arch Intern Med* 1983, **143**:1549–1552.
18. van Gasteren I, Hazenberg BP, Bijzet J, van Rijswijk MH: **Diagnostic accuracy of subcutaneous abdominal fat tissue aspiration for detecting systemic amyloidosis and its utility in clinical practice.** *Arthritis Rheum* 2006, **54**:2015–2021.
19. Blancas-Mejia LM, Ramirez-Alvarado M: **Systemic amyloidosis.** *Annu Rev Biochem* 2013, **82**:745–774.
20. Hachulla E, Janin A, Flipo RM, Saïle R, Façon T, Bataille D, Vanhille P, Hatron PY, Devulder B, Duquesnoy B: **Labial salivary gland biopsy is a reliable test for the diagnosis of primary and secondary amyloidosis. A prospective clinical and immunohistologic study in 59 patients.** *Arthritis Rheum* 1993, **36**:691–697.
21. Sacsaguispe SJ, Antunez-de Mayolo EA, Vicetti R, Delgado WA: **Detection of AA-type amyloid protein in labial salivary glands.** *Med Oral Patol Oral Cir Bucal* 2011, **16**:e149–e152.
22. Masouye I: **Diagnostic screening of systemic amyloidosis by abdominal fat aspiration: an analysis of 100 cases.** *Am J Dermatopathol* 1997, **19**:41–45.
23. Ansari-Lari MA, Ali SZ: **Fine-needle aspiration of abdominal fat pad for amyloid detection: a clinically useful test?** *Diagn Cytopathol* 2004, **30**:178–181.
24. Buxbaum J: **The Amyloidoses.** In *Rheumatology*. 2nd edition. Edited by Klippel JH Dieppe DA. London: Mosby; 1–10.
25. Halloush RA, Lavrovskaya E, Mody DR, Lager D, Truong L: **Diagnosis and typing of systemic amyloidosis: The role of abdominal fat pad fine needle aspiration biopsy.** *Cytojournal* 2010, **6**:24.
26. Tribe CR: **Diagnosis of amyloidosis.** *Br Med J* 1976, **2**:943.

doi:10.1186/s13000-014-0185-9

Cite this article as: Millucci et al.: **Diagnosis of secondary amyloidosis in alkaptonuria.** *Diagnostic Pathology* 2014 **9**:185.

Submit your next manuscript to BioMed Central and take full advantage of:

- Convenient online submission
- Thorough peer review
- No space constraints or color figure charges
- Immediate publication on acceptance
- Inclusion in PubMed, CAS, Scopus and Google Scholar
- Research which is freely available for redistribution

Submit your manuscript at
www.biomedcentral.com/submit

