

CORRECTION

Open Access



Correction to: The long non-coding RNA TUG1 indicates a poor prognosis for colorectal cancer and promotes metastasis by affecting epithelial-mesenchymal transition

Junfeng Sun¹, Chaohui Ding¹, Zhen Yang¹, Tao Liu¹, Xie fu Zhang¹, Chunlin Zhao^{1*} and Jiayang Wang^{2*}

Correction to: *J Transl Med* (2016) 14:42

<https://doi.org/10.1186/s12967-016-0786-z>

The authors found an error in the Figs. 3c–d and 4c–d of the original publication [1]. During the combination of the images of Figs. 3 and 4, the migration and invasion

images were mixed up. The incorrect and correct figures are published in this correction article. The original article has been updated.

The original article can be found online at <https://doi.org/10.1186/s12967-016-0786-z>.

*Correspondence: clin_zhao@163.com; wjiawx@163.com

¹ Gastrointestinal Surgery, The First Affiliated Hospital of Zhengzhou University, No.1 Jianshe East, Zhengzhou 450052, China

² Pediatric Surgery, The First Affiliated Hospital of Zhengzhou University, No.1 Jianshe East, Zhengzhou 450052, China



© The Author(s) 2020. This article is licensed under a Creative Commons Attribution 4.0 International License, which permits use, sharing, adaptation, distribution and reproduction in any medium or format, as long as you give appropriate credit to the original author(s) and the source, provide a link to the Creative Commons licence, and indicate if changes were made. The images or other third party material in this article are included in the article's Creative Commons licence, unless indicated otherwise in a credit line to the material. If material is not included in the article's Creative Commons licence and your intended use is not permitted by statutory regulation or exceeds the permitted use, you will need to obtain permission directly from the copyright holder. To view a copy of this licence, visit <http://creativecommons.org/licenses/by/4.0/>. The Creative Commons Public Domain Dedication waiver (<http://creativecommons.org/publicdomain/zero/1.0/>) applies to the data made available in this article, unless otherwise stated in a credit line to the data.

Correct Fig. 3

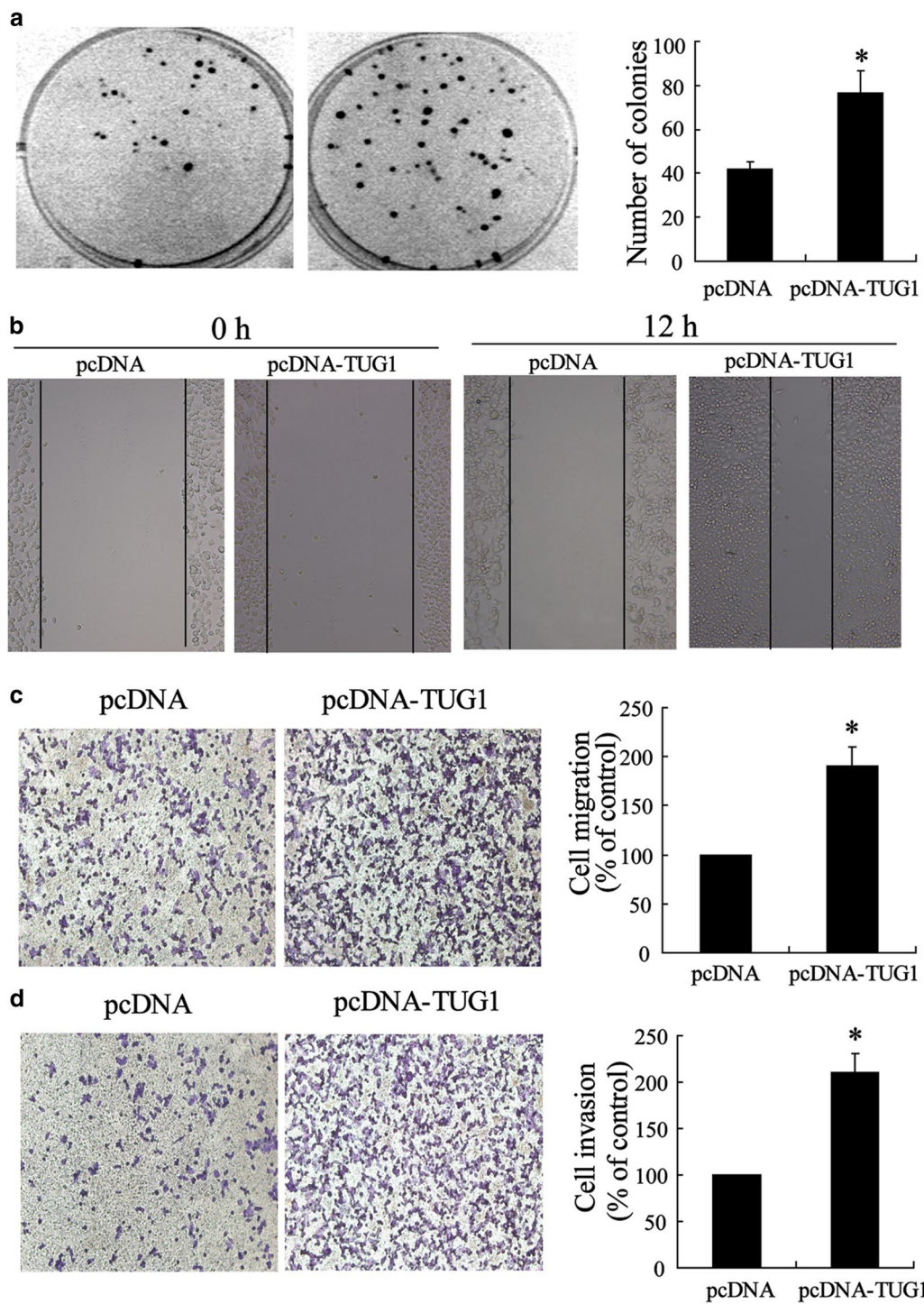
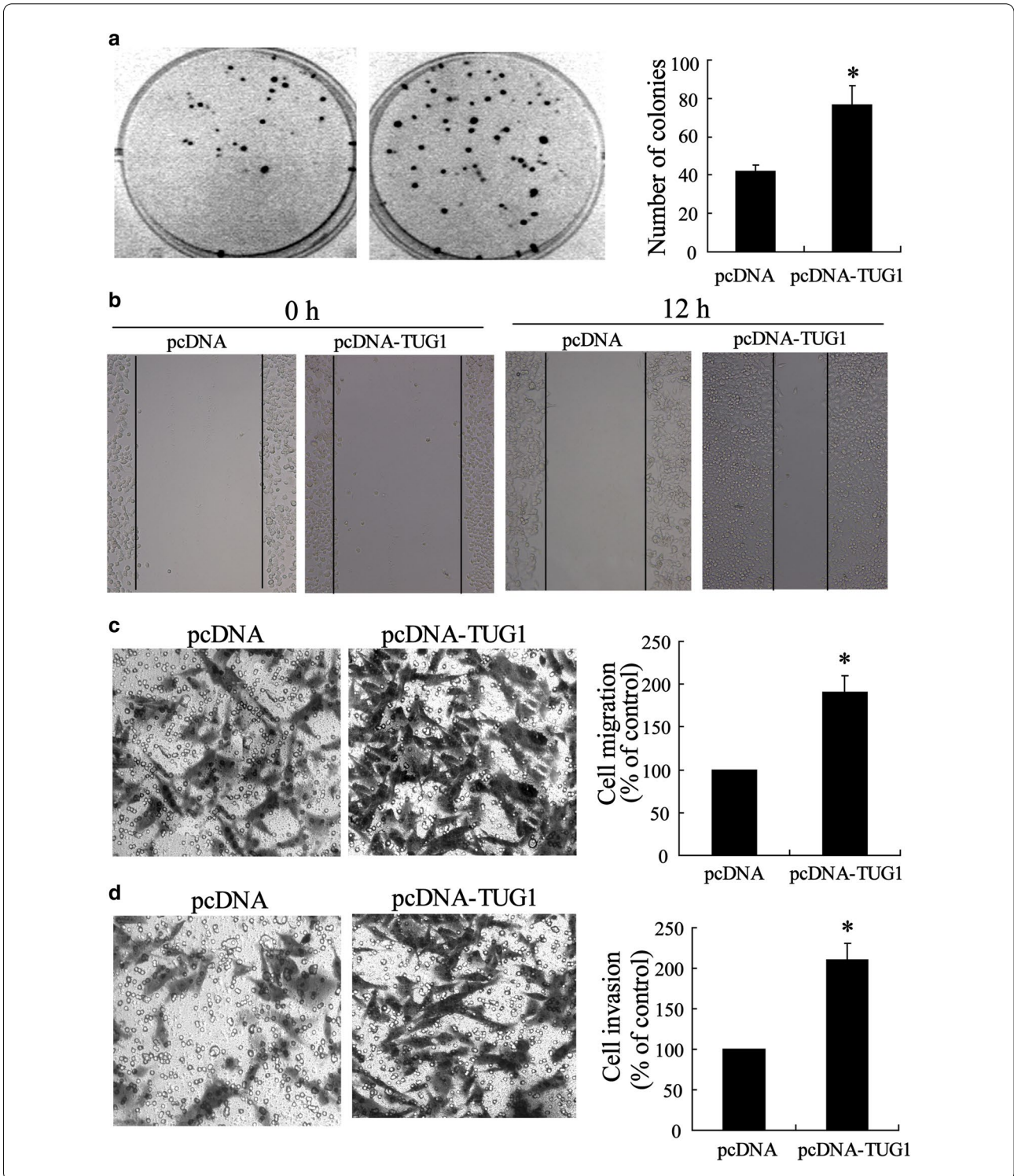


Fig. 3 Enhanced metastasis of CRC cells with overexpressed TUG1. **a** Representative image and number statistics for colony formation in SW480^{pcDNA} and SW480^{pcDNA-TUG1} cells. **b** Wound-healing assay for motility of SW480^{pcDNA} and SW480^{pcDNA-TUG1} cells. Representative pictures of one field at the beginning (t = 0) (left panel) and at the end of the recording (t = 12 h) (right panel) in each condition. **c** Representative images of transwell migrated cells and **d** invaded cells in stably transfected SW480^{pcDNA} and SW480^{pcDNA-TUG1} cells and average number of migrated cells and invaded cells are shown in the right of **(c)** and **(d)**. Values represent mean ± SD. **P* < 0.05 compared with pcDNA

Incorrect Fig. 3



Correct Fig. 4

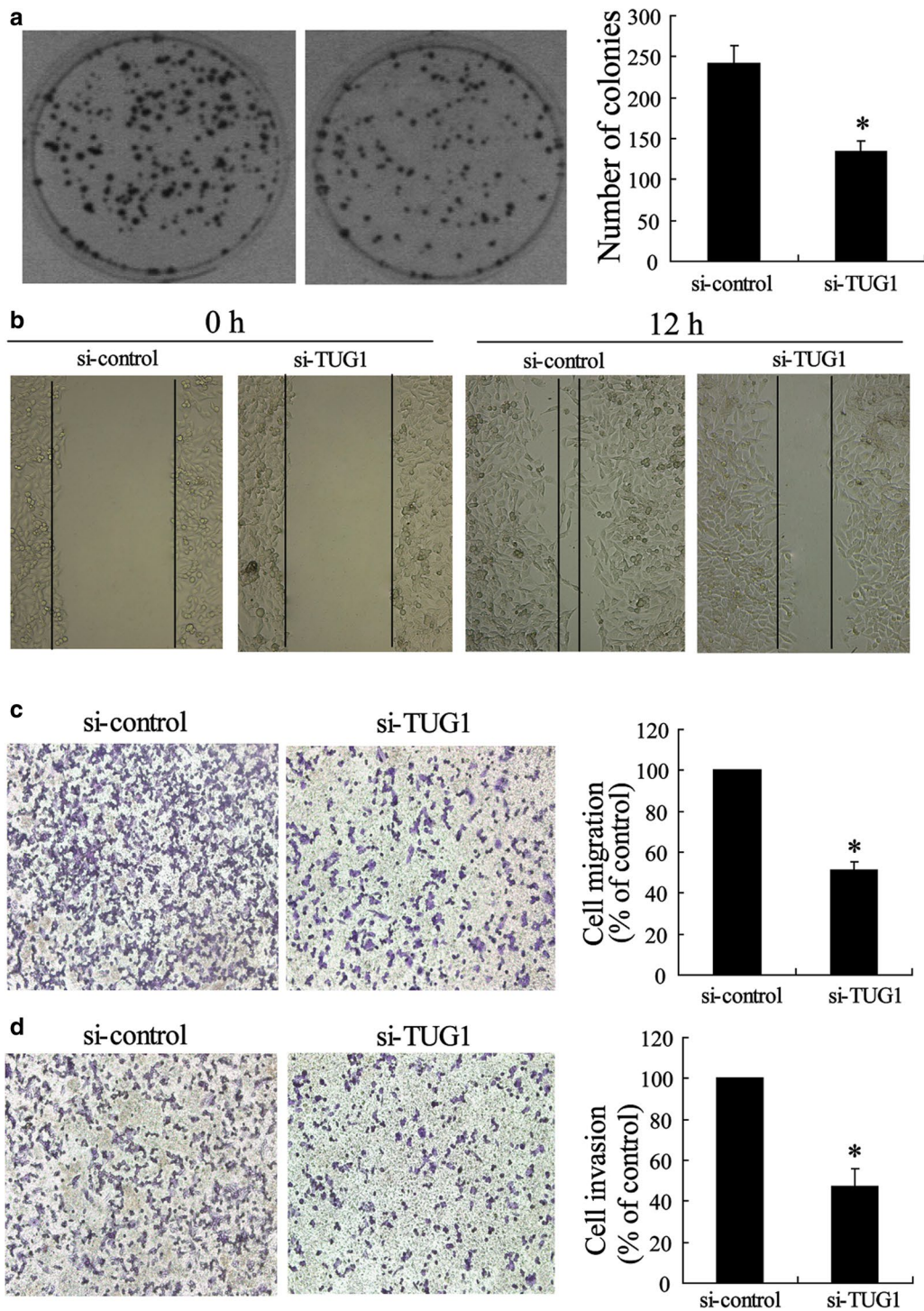
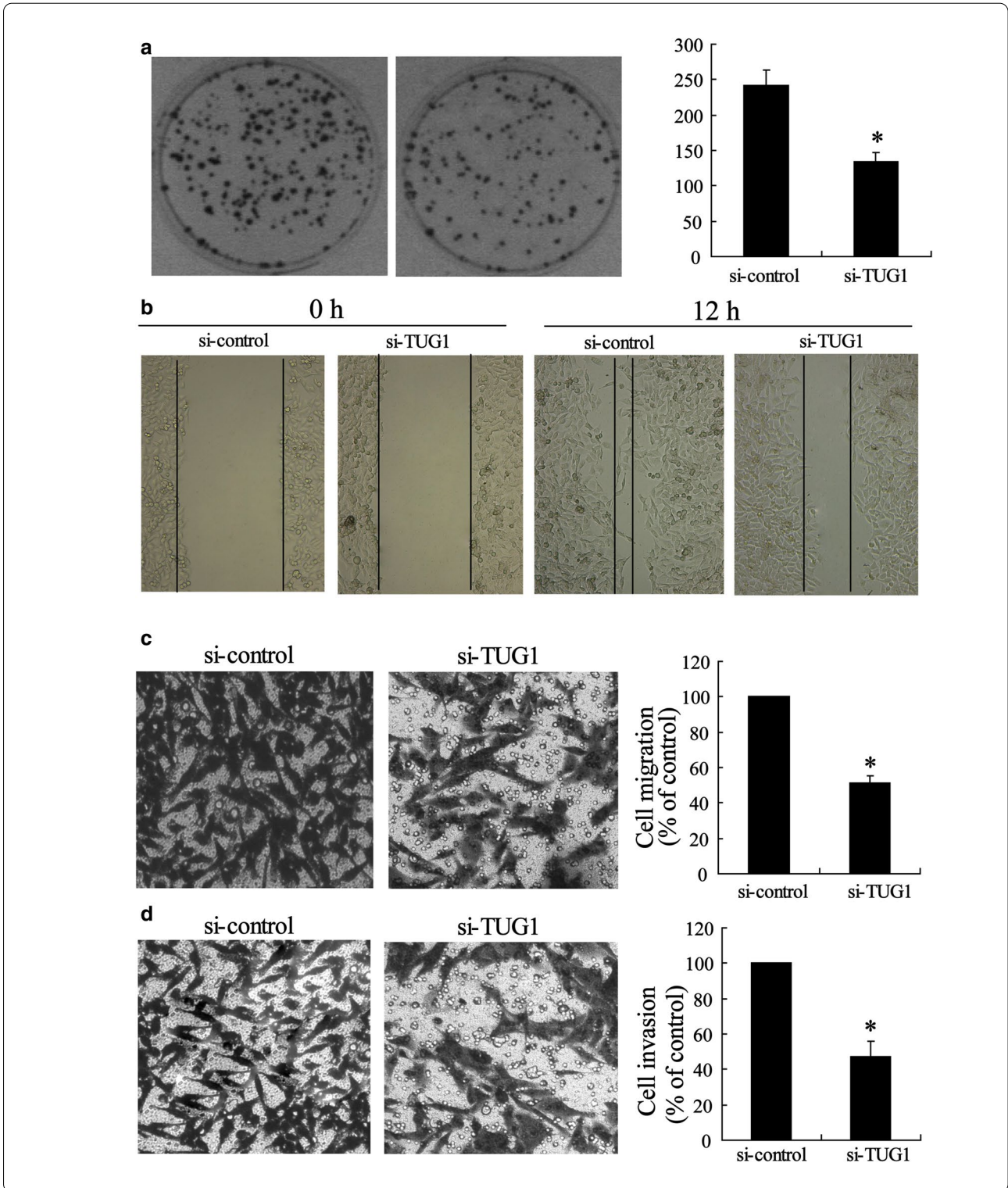


Fig. 4 Silenced TUG1 inhibited metastasis of CRC cells. **a** Representative image and number statistics for colony formation in LOVO^{si-control} and LOVO^{si-TUG1} cells. **b** Wound-healing assay for motility of LOVO^{si-control} and LOVO^{si-TUG1} cells. Representative pictures of one field at the beginning (t = 0) (left panel) and at the end (t = 12 h) (right panel) of the recording in each condition are shown. **c** Representative images of transwell migrated cells, and **d** invaded cells in stably transfected LOVO^{si-control} and LOVO^{si-TUG1} cells and the average number of migrated cells and invaded cells are shown in the right of (**c**) and (**d**). Values represent mean \pm SD. * $P < 0.05$ compared with si-control

Incorrect Fig. 4



Published online: 22 December 2020

Publisher's Note

Springer Nature remains neutral with regard to jurisdictional claims in published maps and institutional affiliations.

Reference

1. Sun J, Ding C, Yang Z, et al. The long non-coding RNA TUG1 indicates a poor prognosis for colorectal cancer and promotes metastasis by affecting epithelial-mesenchymal transition. *J Transl Med*. 2016;14:42. <https://doi.org/10.1186/s12967-016-0786-z>.

Ready to submit your research? Choose BMC and benefit from:

- fast, convenient online submission
- thorough peer review by experienced researchers in your field
- rapid publication on acceptance
- support for research data, including large and complex data types
- gold Open Access which fosters wider collaboration and increased citations
- maximum visibility for your research: over 100M website views per year

At BMC, research is always in progress.

Learn more biomedcentral.com/submissions

