

RESEARCH

Open Access



Sperm quality impairment in males of couples with pregnancy loss is correlated with sexual dysfunction: a cross-sectional study

Xiaowei Yu¹, Songling Zhang², Xiao Yuan Zhang¹ and Qun Wang^{1*}

Abstract

Background Erectile dysfunction is a common problem in males of couples experiencing pregnancy loss. Erectile dysfunction in males with couple infertile has been extensively investigated and found to be closely linked with semen quality impairment and psychological distress, but it is less clear if this relation exists in males of couples experiencing pregnancy loss.

Method A cross-sectional analysis of 437 men who attended our outpatient clinic between June 2021 and October 2021 for couple pregnancy loss. All subjects underwent a complete physical examination, palpation, inspection of the male genitalia, and semen analysis. Validated assessment tools for erectile dysfunction (the International Index of Sexual Function5 -IIEF-5) and anxiety (the seven-item Generalized Anxiety Disorder Scale- GAD-7) were used.

Results Among 437 men of couples with pregnancy loss, we found several relevant sperm parameters confirmed a significant correlation between IIEF-5 scores and sperm parameters, including: sperm progressive motility ($r=0.1627$, $p=0.001$), sperm normal morphology ($r=0.1373$, $p=0.004$) and sperm DNA fragmentation ($r=-0.1248$, $p=0.009$). Males with an IIEF-5 scores range between 5–11 presented the worst results in terms of sperm progressive motility ($p=0.002$), normal morphology ($p=0.001$), and SDF levels ($p=0.003$). GAD-7 score, as well as anxiety level, was significantly higher in those males with an IIEF-5 score between 5 and 11 ($p=0.000$).

Conclusion Although current evidence does not demonstrate the importance of spermatozoa in the etiology of pregnancy loss, significant correlations have been observed between impaired sperm quality and low IIEF-5 scores. Also, anxiety is more likely to occur in males with sexual dysfunction.

Keywords Pregnancy loss, Sexual dysfunction, Sperm quality, Anxiety

Introduction

Pregnancy loss (PL) is defined as the spontaneous end of a pregnancy before 24 weeks of gestation, and it is estimated that one-seventh of pregnancies are lost.

Recurrent pregnancy loss (RPL) is the failure of two or more pregnancies, which includes embryonic and fetal losses [1]. Importantly, the causes of PL are often unknown; hence, it is not always possible to identify the cause in couple PL [1].

Sperm abnormalities in males may contribute to PL, a phenomenon which is getting more attention in research [2]. In particular, sperm DNA fragmentation (SDF) may be involved in couple PL [3, 4]. Regrettably, there are no clear guidelines for recommending SDF screening. The physician may also not recommend routine or additional sperm testing in the male partners of couples with PL for

*Correspondence:

Qun Wang
wangqunjlu@jlu.edu.cn

¹ Department of Reproductive Medicine, Department of Prenatal Diagnosis, The First Hospital of Jilin University, Changchun, Jilin, China

² Department of Obstetrics and Gynecology, The First Hospital of Jilin University, Changchun, Jilin, China



© The Author(s) 2023. **Open Access** This article is licensed under a Creative Commons Attribution 4.0 International License, which permits use, sharing, adaptation, distribution and reproduction in any medium or format, as long as you give appropriate credit to the original author(s) and the source, provide a link to the Creative Commons licence, and indicate if changes were made. The images or other third party material in this article are included in the article's Creative Commons licence, unless indicated otherwise in a credit line to the material. If material is not included in the article's Creative Commons licence and your intended use is not permitted by statutory regulation or exceeds the permitted use, you will need to obtain permission directly from the copyright holder. To view a copy of this licence, visit <http://creativecommons.org/licenses/by/4.0/>. The Creative Commons Public Domain Dedication waiver (<http://creativecommons.org/publicdomain/zero/1.0/>) applies to the data made available in this article, unless otherwise stated in a credit line to the data.

the etiological screening. In clinical practice, it is recommended for females to be examined first, followed by the males. Screening for karyotype abnormalities in males is widely recommended for couples with PL. The cause of recurring PL is unknown in about half of cases [1]. In most cases, men of PL couple prefer do a semen examination before planning another pregnancy. Male partners frequently blame themselves for the spermatozoa disorders which are thought to cause unfavorable pregnancy outcomes, although these concerns are rarely based on scientific evidence. Great efforts are made toward achieving normal spermatozoa in preparation for pregnancy.

Sperm examination is a pivotal measurement of fertility in couple infertility cases. More importantly, there is a strong correlation between impaired semen quality and sexual dysfunction in the infertile population, with sexual dysfunction tending to be more severe the lower the sperm quality [5, 6]. Many males of PL couples also experience a high level of psychological distress and emotional burden, and sexual dysfunction is increased among them [7–9].

According to the current evidence, spermatozoa abnormalities are not necessarily a major contributor to couple PL [2, 3]. In our previous studies, we showed that erectile dysfunction (ED) is highly prevalent, existing in 30.5% of males with couple PL [10]. It is worth investigating whether impaired sperm quality is related to male sexual dysfunction in males with couple PL. This study utilized survey data from a cohort of males with couple PL from the andrology clinic, attempting to evaluate the relationship between semen quality and male sexual function. Understanding the link between sexual dysfunction and semen quality can help to optimize individual treatments.

Methods

Ethics statement

We conducted this study in compliance with the Helsinki declaration and its amendments. The study was approved by the Ethics Committee of the First Hospital of Jilin University (21K064-001). All participants signed an informed consent form. The study is a registered clinical trial in ClinicalTrials.gov and the identifier is NCT04941690).

Human subject study

This study was a cross-sectional cohort study on a group of 437 male partners in couples with PL that were assessed at a single Reproductive Center at the First Hospital of Jilin University between June 2021 and October 2021. Couples with PL in this study are defined as those who experienced one or more spontaneous ends of a pregnancy before 24 weeks of gestation: embryonic, fetal, and biochemical pregnancy losses were included. Of note, ectopic and molar pregnancies were excluded in

the present study. Male patients enrolled were: i. greater than or equal to 20 years old and seeking medical care for couple PL. ii. Men living together with wives and having regular intercourse during the study period; iii. Members of couples planning to try to conceive; iv. Men who voluntarily came to our andrology clinic to seek medical help. The exclusion criteria were: i. Men with a previous physician diagnosis of severe cardiovascular diseases, hypogonadism, or brain strokes; ii. Men separated from their wives or without regular sexual intercourse, at least once a month (for example, in cases where female surgical treatment or vaginal operation prevented sexual intercourse); iii. Men with psychopathological conditions or who were receiving medications that may affect sexual function (such as phosphodiesterase 5 inhibitors, testosterone, and selective serotonin reuptake inhibitors). Since most of the males attended the clinic by themselves, we were unable to evaluate the fertility and sexual function of their female partners.

Self-reported questionnaires

All participants completed a web-based questionnaire that included comprehensive demographic information, as well as the five-item version of the International Index of Erectile Function (IIEF-5) for diagnosis of ED; anxiety was assessed by the seven-item Generalized Anxiety Disorder (GAD-7) Scale. Timed intercourse is defined in this study as when more than 70% of sexual intercourse in a month is concentrated around the time of ovulation. The predicted ovulation day is based on various ovulation prediction methods, such as calendar charting, tracking basal body temperature, cervical secretion investigation, and urinary hormone measurement. A GAD-7 with a score of 5 or more is considered an anxiety state.

Semen analysis and physical examination

After sexual abstinence of three to seven days, samples of semen were collected in sterile containers by masturbation. Sperm quality was defined according to World Health Organization guidelines [11]. The mean of SDF was determined by TUNEL assay; DNA fragmentation was assessed 1 h after ejaculation to avoid iatrogenic DNA damage. Different cutoff values of SDF were used to discriminate between normal and high-SDF specimens; most studies used 30% or greater as the cutoff value for high-SDF [12]. Testicular parenchyma or varicocele were palpated during physical examinations. A Prader orchidometer was used to assess testes volume, and a solo physician performed all physical examinations.

Data analysis

A mean \pm standard deviation (SD) was calculated for normally distributed data, a median (quartile) for

non-normally distributed data, and a percentage for categorical data. Analysis of variance (ANOVA) or Kruskal–Wallis tests were used for comparisons of more than two groups for continuous parameters, and categorical variables were compared using the Pearson χ^2 test. Correlations were analyzed using Spearman's correlation test and regression analysis. Analysis of covariance (ANCOVA) was used to investigate the association between changes in sperm quality and sexual dysfunction, adjusted for potential confounding factors (i.e. variables statistically significant in the univariate analysis). *P*-values < 0.05 were considered statistically significant. Data entry and analysis were performed using the IBM SPSS Statistics for Windows, Version 22.0 (Armonk, NY: IBM Corp) software package.

Results

Participant characteristics

A total of 437 male partners in couples with PL met the inclusion criteria for the study. Table 1 summarizes the

patient characteristics. When compared with participants of normal sexual function, patients with ED tended to be older (32.09 ± 4.19 vs. 34.11 ± 4.55 ; $P = 0.000$), have more incidences of PL ($P = 0.001$), employ timed intercourse more frequently ($P = 0.000$), and have higher levels of anxiety ($P = 0.000$). No group differences were evident in the remaining demographic variables. (See Table 1).

Erectile dysfunction and sperm quality

Figure 1 shows that there are significant positive correlations between sperm progressive motility ($r = 0.1627$, $p = 0.001$), sperm normal morphology ($r = 0.1373$, $p = 0.004$) and IIEF-5 scores. Significant negative correlations were also seen between SDF ($r = -0.1248$, $p = 0.009$) and IIEF-5 scores. (See Fig. 1) There were no such correlations in other sperm parameters, such as semen volume, sperm concentration, and total sperm number. (See Supplementary Fig. 1) The

Table 1 Sociodemographic and clinical characteristics of the participants

Demographics and clinical parameters	Males with normal sexual function (N = 318)	Males with erectile dysfunction (N = 119)	P value
Age (years)	32.09 ± 4.19	34.11 ± 4.55	0.000
Body-mass index (kg/m ²)	25.49 ± 3.40	25.91 ± 3.53	0.257
Current smokers (%)	37.7	44.5	0.196
Current alcohol consumption (≥ 4 drinks/week) (%)	18.5	19.3	0.853
Education level (%)			0.679
No higher than high school	19.2	20.0	
High school	23.3	26.9	
University and above	57.5	57.1	
Monthly household income			0.349
~ 5000	24.5	22.7	
5000–7000	60.0	47.9	
7000~	24.5	29.4	
Night shifts (times/week) (%)			0.215
1–2	11.6	15.9	
3–4	3.1	1.7	
> 4	1.2	0.8	
Number of pregnancy losses (%)			0.001
1	44.0	30.2	
2	41.5	43.7	
≥ 3	14.5	26.1	
Timed intercourse (%)	11.3	33.6	0.000
GAD-7 scores	2.75 ± 2.08	4.50 ± 3.13	0.000
Anxiety state (%)	18.2	46.2	0.000
Mean testis volume (Prader) (ml)	13.44 ± 2.73	13.37 ± 2.81	0.803
Clinical varicocele (Palpation) (%)	8.5	13.4	0.121
Symptoms of Prostatitis (%)	8.5	11.8	0.296

Significant results are shown in bold ($p < 0.05$, paired t test). Group A; males with ED; Group B: males with normal sexual function

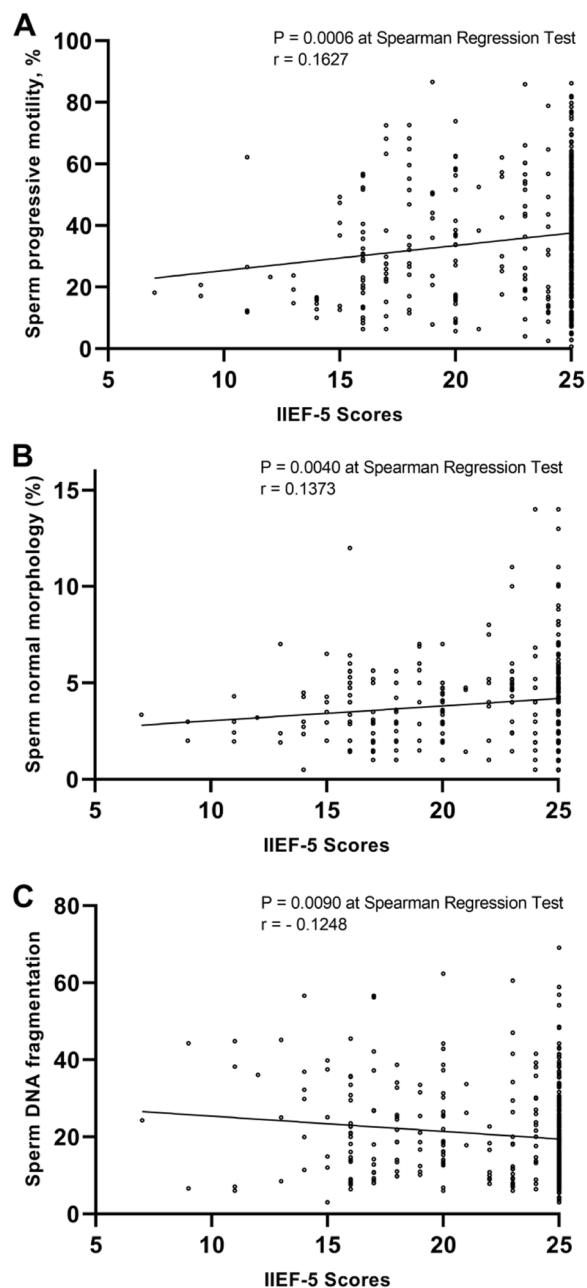


Fig. 1 Relationship between IIEF-5 scores and sperm quality (A: sperm progressive motility, B: sperm normal morphology and C: sperm DNA fragmentation)

analysis was performed after adjusting for possible confounding factors related to age.

According to the severity of ED, IIEF-5 scores can be classified as 22–25 (without ED), 17–21 (mild), 12–16 (mild to moderate), or 5–11 (moderate-severe). Males with IIEF-5 score range between 5–11 (moderate-severe ED) presented the worst results in terms of sperm progressive motility ($p = 0.002$), normal morphology

($p = 0.001$), and SDF levels ($p = 0.003$). (See Fig. 2) Other sperm indices (semen volume, sperm concentration, and total sperm number) were not significantly different between groups. (See Supplementary Fig. 2).

Anxiety

From the analysis of covariance in the anxiety score, scores in the normal sexual function group (IIEF-5 score: 22–25) were significantly lower than in the ED group (IIEF-5 score ≤ 22) (2.75 ± 2.08 vs. 4.50 ± 3.13 ; $P = 0.000$). The GAD-7 score increased with ED severity (See Fig. 3G). The proportion of patients who reported anxiety also increased with increase in severity of the ED, more than half of the study participants had mild to moderate ED (IIEF-5 score: 12–16, 68.3%) or moderate to severe ED (IIEF-5 score: 5–11, 85.7%) with self-reported anxiety. (See Fig. 3F).

Timed intercourse

Men with ED were more inclined to organize their sexual lives according to the fertility window to maximize the chance of conception, compared to males with normal sexual function (33.6% vs. 11.3%; $P = 0.000$). As the severity of ED increased, male participants were more likely to prefer timed intercourse over regular sexual intercourse. Sexual intercourse during ovulation was common in half or more of the participants with mild to moderate ED (IIEF-5 score: 12–16, 46.3%) or moderate to severe ED (IIEF-5 score: 5–11, 85.7%). (See Fig. 4).

Discussion

To our knowledge, the present study is the first to investigate the association between ED, defined by traditional IIEF-5 scores and sperm quality, and psychological distress (anxiety) among male partners of PL couples. In males of PL couples, with the decrease of sperm progressive motility/normal morphology and elevated SDF levels, IIEF-5 scores show a significant downward trend. Similarly, when differentiating the severity of ED based on the value of IIEF-5 scores, males with lowest IIEF-5 scores range (5–11) also presented the worst results in terms of sperm progressive motility/normal morphology and SDF levels. GAD-7 score, as well as anxiety levels, were significantly elevated in those males with IIEF-5 score between 5 and 11 (moderate-severe ED), and they were more inclined to arrange their sexual lives according to the “fertile window.”

Established causes of PL classically include uterine anomalies, hormonal and metabolic disorders (hypothyroidism and diabetes), infections (chronic endometritis), autoimmune abnormalities (antiphospholipid antibody syndrome, thrombophilias), and abnormal chromosomes (particularly translocations, in either partner).

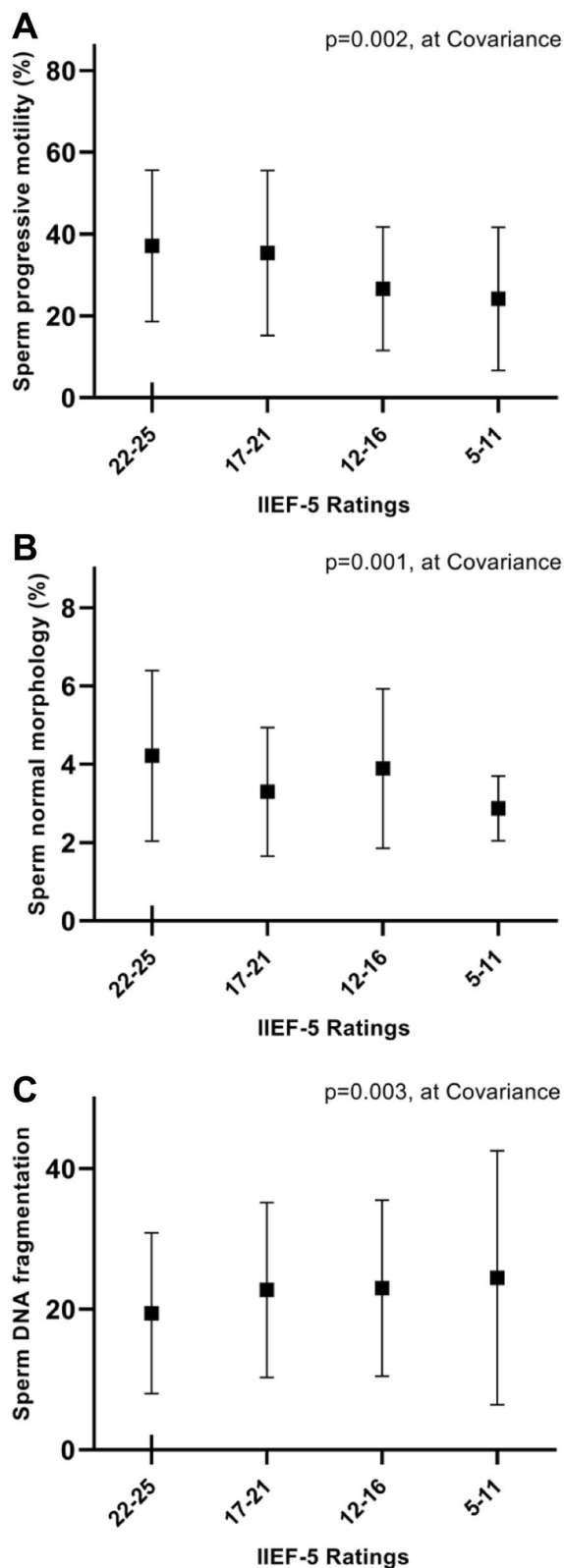


Fig. 2 Comparison among groups of men for the severity of erectile dysfunction and sperm quality (**A**: sperm progressive motility, **B**: sperm normal morphology and **C**: sperm DNA fragmentation). Comparisons were performed after adjustment for age. Graphs for each group considered show the mean and standard deviation of the parameters evaluated

Embryonic aneuploidy as the most common cause of sporadic PL, primarily derived from oocyte [13]. In clinical practice, screening only for karyotype abnormalities in males is widely recommended among couples with PL. Despite thorough evaluation, at least 50% of cases of RPL cannot be attributed to a specific etiology. PL couples are repeatedly told that in the absence of treatment, up to 60% to 70% of couples with unexplained RPL will have success with their next pregnancy [14]. However, the absence of identifiable causes in either partner is difficult for patients to accept, as pregnancy loss is a painful experience [15]. At present, the etiology and pathogenesis of PL have been and continue to be intensely investigated, and there has been increased appreciation for the role of sperm in PL. Many investigators have found sperm factors may be associated with PL. Elevated levels of SDF has been linked to early gestation pregnancy loss (prior to 20 weeks) [3] and high proportions of sperm aneuploidy may present even among patients with a normal male karyotype (46, XY) [16]. Ejaculate sperm contain approximately 0.6% aneuploid chromosomes. This incidence increases to 6% in severe oligospermia with disordered spermatogenesis and up to 14% in nonobstructive azoospermia [2]. Regrettably, there are no clear guidelines for recommending routine sperm test for the etiological screening of couple PL. These couples are without a universal treatment recommendation, and many couples express fear over potential complications in the next pregnancy and are reluctant to conceive again.

Although the magnitude of the correlation between sperm quality impairment and couple PL is modest, after all, half of the embryo's genetic material is contributed by the male partner. Men with couple PL often feel they need to do pre-pregnancy semen examinations before planning a pregnancy, and if these examination show abnormalities (asthenozoospermia, teratozoospermia, oligospermia), many couples are reluctant to conceive again because of the potential pregnancy complications. In clinical work, nearly all teratozoospermia patients expressed that teratozoospermia is a serious concern for them, and worried about the involvement of teratozoospermia in sperm-egg binding and fertilization. These concerns are rarely based on scientific evidence, but great efforts are made to improve the sperm quality in these patients, who look to achieve normal spermatozoa in preparation for pregnancy.

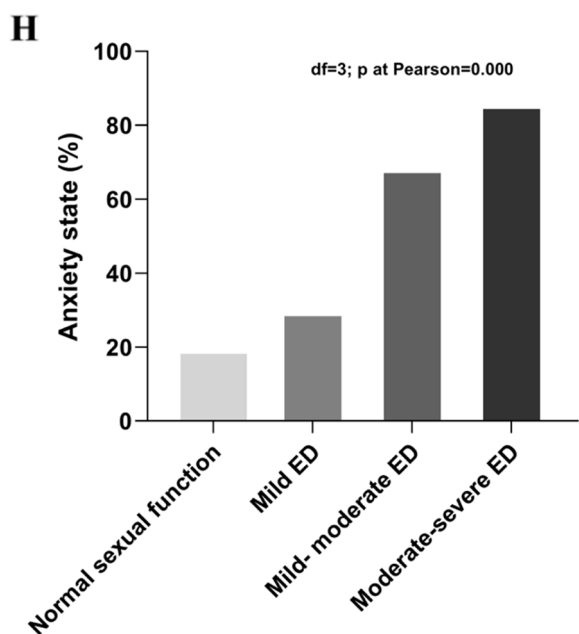
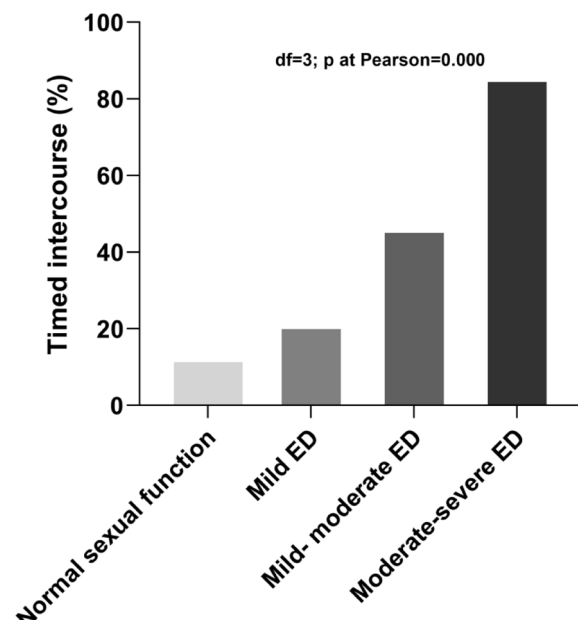
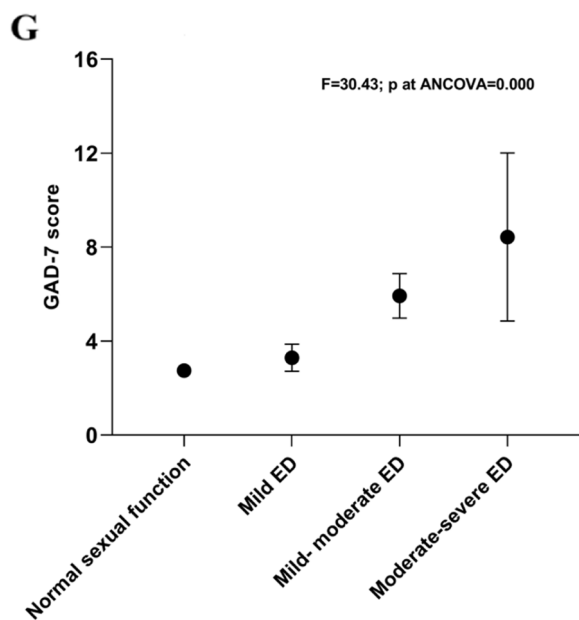


Fig. 4 Comparison among groups of men for the severity of erectile dysfunction (ED) and timed intercourse (%)

Fig. 3 Comparison among groups of men for the severity of erectile dysfunction (ED) and anxiety. Comparison among groups for: GAD-7 scores (panel **G**); Anxiety state (%) (panel **H**). Comparisons were performed after adjustment for age. Graphs for each group considered show the mean and standard deviation (panel **G**) or percentage (panel **H**) of the parameters evaluated

seen in 33.6% of men with ED in PL couples, whereas in the normal sexual function group this proportion is only 11.3%. Timed intercourse may not ultimately be beneficial in achieving pregnancy, but instead increase stress related to timed intercourse as well as the risk of sexual dysfunction [18, 19]. Ejaculation frequency is also an important factor that influences semen parameters. It is widely admitted that prolonged sexual abstinence may be beneficial for semen volume and sperm concentration; however, lack of ejaculation also displays adverse consequences on sperm motility, viability, and SDF [20]. Increasing the number of ejaculations may be a way of improving sperm parameters and SDF, and therefore pregnancy outcomes [21–23]. Recurrent ejaculations have been proposed as a way to improve sperm DNA quality and reproductive success [22–25].

Semen quality is regulated by sex hormones, and the hypothalamic–pituitary–gonadal axis can be altered by emotional disorders such as anxiety [26, 27]. Anxiety was associated with lower sperm parameters and higher SDF in males [28]. Infertile men showed increased somatized anxiety closely associated with reduced erectile function, sexual desire, and ejaculatory latency [6]. This study showed that male partners with sexual dysfunction in PL couples are more likely to have emotional disorders than males who have normal erectile function, and mild anxiety was more common in males with ED.

This study has limitations that should be noted. First, we were unable to include important variables

Couples trying to conceive were recommended to engage in regular intercourse at least two to three times a week [17]. In the current study, couples who had experienced PL were more inclined to arrange their sexual lives according to the “fertile window.” Timed intercourse was

such as sex hormone profiles, sex hormones not only play an important role in spermatogenesis and sperm maturation [29] but also in the pathogenesis of sexual dysfunction [30]. Thus, a strong bidirectional association between sex hormones and sperm quality/sexual function may exist. Second, male sexual dysfunction can also be aggravated by the coexistence of sexual dysfunction in the female partner [5]. Unfortunately, in conservative cultures like China, we do not have access to female sexual function data. In addition, the analysis was cross-sectional and hospital-based, which raises the possibility of selection bias, and there may have been a selection bias regarding the control group. Thus, results should be interpreted with caution. Research on large prospective studies is still needed to verify our findings.

In summary, although there is insufficient evidence from the current studies to support the importance of spermatozoa in the etiology of PL, a significant correlation was observed between poor sperm quality and a lower IIEF-5 score. Males with the lowest IIEF-5 scores (5–11) showed the worst results in terms of sperm motility, normal morphology, and sperm SDF levels. The GAD-7 score, as well as anxiety levels, were significantly increased.

Abbreviations

PL	Pregnancy loss
RPL	Recurrent pregnancy loss
SDF	Sperm DNA fragmentation
ED	Erectile dysfunction
IIEF-5	Five-item version of the International Index of Erectile Function
GAD-7	Seven-item Generalized Anxiety Disorder
SD	Standard deviation. ANOVA: analysis of variance
ANCOVA	Analysis of covariance

Supplementary Information

The online version contains supplementary material available at <https://doi.org/10.1186/s12958-023-01067-9>.

Additional file 1.

Acknowledgements

The authors thank the patients for their active engagement in the study.

Authors' contributions

XW Y and SL Z designed and conceived the study; XY Z and Q W, performed the statistical analysis and drafted the article; Data collected by XW Y, SL Z, XY Z and Q W; XW Y and SL Z contributed in drafting the article; WQ made critical revisions to the manuscript. All authors revised and commented on the article and approved the final version before submission.

Funding

This study was supported by the Jilin Province Department of Finance (2018SCZWSZX-036).

Availability of data and materials

The datasets used and/or analyzed during the current study are available from the corresponding author on reasonable request.

Declarations

Ethics approval and consent to participate

The study was approved by the First Hospital of Jilin University ethics committee (21K064-001) and participants signed informed consent.

Consent for publication

Not Applicable.

Competing interests

The authors declare no conflict of interest.

Received: 11 September 2022 Accepted: 22 January 2023

Published online: 28 January 2023

References

- Dimitriadis E, Menkhorst E, Saito S, Kutteh WH, Brosens JJ. Recurrent pregnancy loss. *Nat Rev Dis Primers*. 2020;6:1–19.
- Bronson R. Role of spermatozoa in the etiology of miscarriage. *Fertil Steril*. 2016;105:47–8.
- Agarwal A, Majzoub A, Baskaran S, Selvam MKP, Cho CL, Henkel R, Finelli R, Leisegang K, Sengupta P, Barbarosie C. Sperm DNA fragmentation: a new guideline for clinicians. *World J Mens Health*. 2020;38:412.
- Zhu X-B, Chen Q, Fan W-M, Niu Z-H, Xu B-F, Zhang A-J. Sperm DNA fragmentation in Chinese couples with unexplained recurrent pregnancy loss. *Asian J Androl*. 2020;22:296.
- Kızılay F, Şahin M, Altay B. Do sperm parameters and infertility affect sexuality of couples? *Andrologia*. 2018;50:e12879.
- Lotti F, Corona G, Castellini G, Maseroli E, Fino M, Cozzolino M, Maggi M. Semen quality impairment is associated with sexual dysfunction according to its severity. *Hum Reprod*. 2016;31:2668–80.
- Ma J, Zhang Y, Bao B, Chen W, Li H, Wang B. Prevalence and associated factors of erectile dysfunction, psychological disorders, and sexual performance in primary vs. secondary infertility men. *Reprod Biol Endocrinol*. 2021;19:1–10.
- Xiong J, Cai Z, Ma C, Yang B, Zhang J, Li H. Evaluation of the Psychological Status, Infertility-Associated Factors, and Erectile Function in Patients with Timely Ovulatory Intercourse Failure in China: Evidence from a Cross-Sectional Study. *BioMed Res Int*. 2020;2020:2850507.
- Zhang YX, Zhang XQ, Wang QR, Yuan YQ, Yang JG, Zhang XW, Li Q. Psychological burden, sexual satisfaction and erectile function in men whose partners experience recurrent pregnancy loss in China: a cross-sectional study. *Reprod Health*. 2016;13:1–5.
- Yu X, Zhang S, Wei Z, Zhang X, Wang Q. Prevalence of sexual dysfunction among the male populations who seeking medical care for infertility, pregnancy loss and preconception care: a cross-sectional study. *Sci Rep*. 2022;12:1–7.
- WHO. WHO laboratory manual for the examination of human semen and sperm-cervical mucus interaction. 4th ed. Cambridge: Cambridge University Press; 2010.
- Esteves SC, Roque M, Bradley CK, Garrido N. Reproductive outcomes of testicular versus ejaculated sperm for intracytoplasmic sperm injection among men with high levels of DNA fragmentation in semen: systematic review and meta-analysis. *Fertil Steril*. 2017;108:456–467 e451.
- Lathi R, Sigurjonsson S, Keller J, Demko Z, Rabinowitz M. Parental Origin of Aneuploidy in First Trimester Miscarriages. *Fertil Steril*. 2012;97:55.
- Jaslow CR, Carney JL, Kutteh WH. Diagnostic factors identified in 1020 women with two versus three or more recurrent pregnancy losses. *Fertil Steril*. 2010;93(4):1234–43.
- Serrano F, Lima ML. Recurrent miscarriage: psychological and relational consequences for couples. *Psychol Psychother Theory Res Pract*. 2006;79:585–94.
- Egozcue S, Blanco J, Vendrell J, Garcia F, Veiga A, Aran B, Barri P, Vidal F, Egozcue J. Human male infertility: chromosome anomalies, meiotic disorders, abnormal spermatozoa and recurrent abortion. *Hum Reprod Update*. 2000;6:93–105.

17. O'Flynn N. Assessment and treatment for people with fertility problems: NICE guideline. *Br J Gen Pract.* 2014;64:50–1.
18. Dasgupta S, Frodsham L, Patra P, Chanda A. Timed intercourse in infertile couples doing more harm than benefits in terms of sexual dysfunction and time to pregnancy: a cohort study. 2020.
19. Byun JS, Lyu SW, Seok HH, Kim WJ, Shim SH, Bak CW. Sexual dysfunctions induced by stress of timed intercourse and medical treatment. *BJU Int.* 2012;111:E227–234.
20. Comar VA, Petersen CG, Mauri AL, Mattila M, Vagnini LD, Renzi A, Petersen B, Nicoletti A, Dieamant F, Oliveira JBA. Influence of the abstinence period on human sperm quality: analysis of 2,458 semen samples. *JBRA Assist Reprod.* 2017;21:306.
21. Dahan MH, Mills G, Khoudja R, Gagnon A, Tan G, Tan SL. Three hour abstinence as a treatment for high sperm DNA fragmentation: a prospective cohort study. *J Assist Reprod Genet.* 2021;38:227–33.
22. Gosálvez J, González-Martínez M, López-Fernández C, Fernández JL, Sánchez-Martín P. Shorter abstinence decreases sperm deoxyribonucleic acid fragmentation in ejaculate. *Fertil Steril.* 2011;96:1083–6.
23. Mayorga-Torres B, Camargo M, Agarwal A, Du Plessis SS, Cadavid ÁP, Cardona Maya WD. Influence of ejaculation frequency on seminal parameters. *Reprod Biol Endocrinol.* 2015;13:1–7.
24. Mayorga-Torres JM, Agarwal A, Roychoudhury S, Cadavid A, Cardona-Maya WD. Can a short term of repeated ejaculations affect seminal parameters? *J Reprod Infertil.* 2016;17:177.
25. Pons I, Cercas R, Villas C, Braña C, Fernández-Shaw S. One abstinence day decreases sperm DNA fragmentation in 90% of selected patients. *J Assist Reprod Genet.* 2013;30:1211–8.
26. Bhongade M, Prasad S, Jiloha R, Ray P, Mohapatra S, Koner B. Effect of psychological stress on fertility hormones and seminal quality in male partners of infertile couples. *Andrologia.* 2015;47:336–42.
27. Wdowiak A, Bien A, Iwanowicz-Palus G, Makara-Studzińska M, Bojar I. Impact of emotional disorders on semen quality in men treated for infertility. *Neuro-Endocrinol Lett.* 2017;38:50–8.
28. Vellani E, Colasante A, Mamazza L, Minasi MG, Greco E, Bevilacqua A. Association of state and trait anxiety to semen quality of in vitro fertilization patients: a controlled study. *Fertil Steril.* 2013;99:1565–72 e1562.
29. Zhao W, Jing J, Shao Y, Zeng R, Wang C, Yao B, Hang D. Circulating sex hormone levels in relation to male sperm quality. *BMC Urol.* 2020;20:1–7.
30. Lotti F, Maggi M. Sexual dysfunction and male infertility. *Nat Rev Urol.* 2018;15:287–307.

Publisher's Note

Springer Nature remains neutral with regard to jurisdictional claims in published maps and institutional affiliations.

Ready to submit your research? Choose BMC and benefit from:

- fast, convenient online submission
- thorough peer review by experienced researchers in your field
- rapid publication on acceptance
- support for research data, including large and complex data types
- gold Open Access which fosters wider collaboration and increased citations
- maximum visibility for your research: over 100M website views per year

At BMC, research is always in progress.

Learn more biomedcentral.com/submissions

