

CASE REPORT

Open Access



# Surgical resection of hepatic and rectal metastases of pancreatic acinar cell carcinoma (PACC): a case report

Yusuke Ohara, Tatsuya Oda\*, Tsuyoshi Enomoto, Katsuji Hisakura, Yoshimasa Akashi, Koichi Ogawa, Yohei Owada, Yu Domoto, Yoshihiro Miyazaki, Osamu Shimomura, Masanao Kurata and Nobuhiro Ohkohchi

## Abstract

**Background:** Pancreatic acinar cell carcinoma (PACC), a rare variant of pancreatic malignancy, is generally managed the same way as pancreatic ductal adenocarcinoma (PDAC). Surgical resection is the gateway to curing it; however, once it metastasizes (usually to the liver, lungs, lymph nodes, or peritoneal cavity), systemic chemotherapy has been the only option, but with unfavorable results.

**Case presentation:** A 67-year-old man with symptoms of loss of appetite and weight underwent surgery for malignancy of the pancreatic tail extending into the entire pancreas. The pathological diagnosis was PACC following total pancreatectomy. Twenty-four months after the pancreatectomy, a solitary liver metastasis was treated by partial hepatectomy, and, subsequently, 4 months later, he presented with melena. Further examination revealed a type-2 rectal tumor. Histological examination following biopsy revealed it to be rectal metastasis of PACC, and it was treated by abdominoperineal resection. Subsequently, the patient did not have tumor recurrence as of 40 months after pancreatectomy.

**Conclusions:** This is a rare case of PACC presenting with metachronal metastases in the liver and rectum, and we successfully treated them by surgical resections. Since the malignant behavior of PACC is usually less than that of PDAC, surgical resection could be an option even for metastatic lesions when the number and extent of metastases are limited.

**Keywords:** Pancreatic cancer, Acinar cell carcinoma, Rectal metastasis

## Background

Pancreatic acinar cell carcinoma (PACC) is relatively rare; it accounts for 1–2% of pancreatic malignancies [1, 2]. The histological presentation of PACC is quite unique. It is composed of relatively uniform tumor cells arranged in acinar, glandular, trabecular, and solid structures, without ductal formation that is seen in pancreatic ductal adenocarcinoma (PDAC) [3]. The clinical prognoses of patients with PACC are usually much better than those of patients with PDAC, although approximately half the patients with PACC are metastatic at the time of diagnosis [4].

Despite these differences between PACC and PDAC, the clinical management is usually same in both. Surgical resection is the only potentially curative treatment for primary PACC, and chemotherapy or radiotherapy has been performed for locally advanced or metastatic PACC [5]. However, their therapeutic efficacies in metastatic PACC have not been established due to small sample sizes [6].

Here, we report a case of PACC with unusual metachronal metastases in the liver and rectum after 24 and 28 months of the initial curative pancreatectomy, respectively. Metastases of PACC are commonly seen in the liver and lymph nodes, whereas colorectal metastasis is atypical and extremely rare. We chose surgical resection for both liver and rectal metastases with satisfactory outcomes.

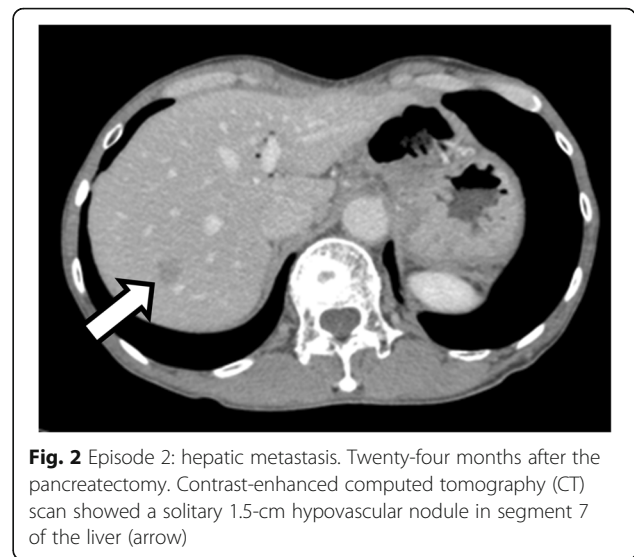
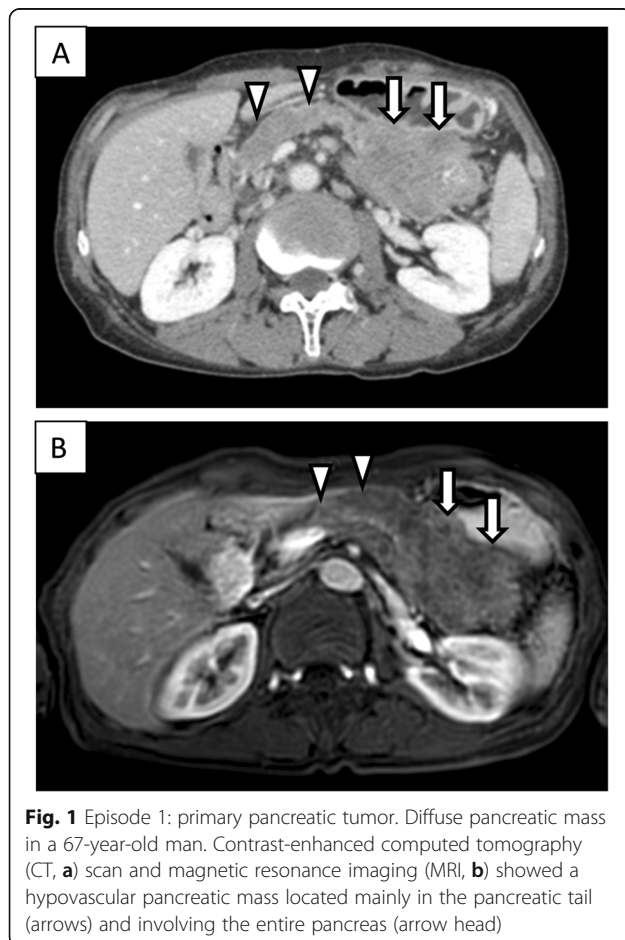
\* Correspondence: [tatoda@md.tsukuba.ac.jp](mailto:tatoda@md.tsukuba.ac.jp)

Department of Gastrointestinal and Hepato-Biliary-Pancreatic Surgery, Faculty of Medicine, University of Tsukuba, 1-1-1 Tennodai, Tsukuba, Ibaraki 305-8575, Japan



### Case presentation

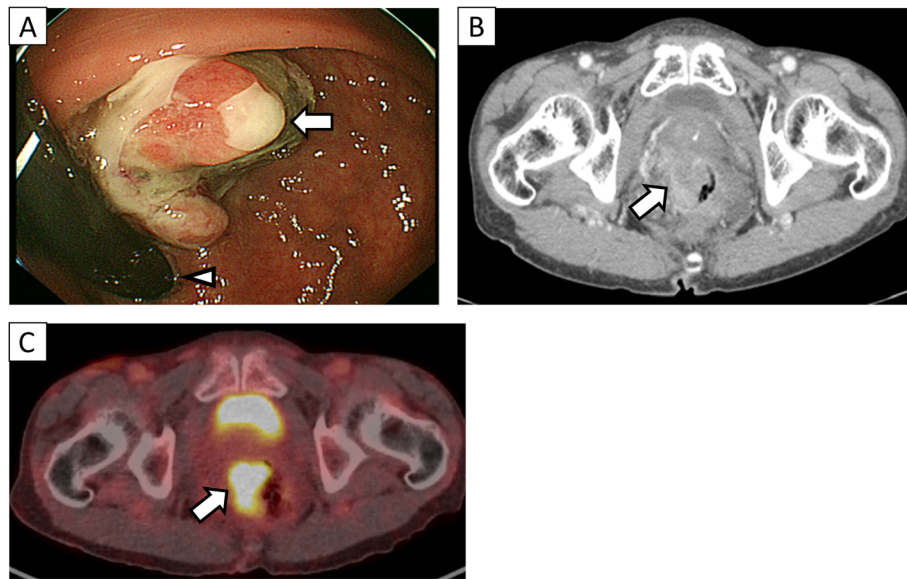
A 67-year-old man was admitted to the hospital with symptoms of loss of appetite and weight. Computed tomography (CT) and magnetic resonance imaging (MRI) revealed a pancreatic mass extending into the entire pancreas, splenic vein, and inferior mesenteric vein (Fig. 1). The patient underwent total pancreatectomy. Macroscopically, a whitish tumor measuring 10 cm was found in the pancreatic tail and body. Microscopically, eosinophilic tumor cells were found in a trabecular acinar pattern. Immunohistochemical analysis was negative for synaptophysin, chromogranin A, CD56, and trypsin. Finally, we diagnosed it as PACC, T3N0M0 (TNM classification according to the Union for International Cancer Control). According to the protocol for advanced PDAC, adjuvant chemotherapy with S-1 (Taiho Pharmaceutical, Tokyo, Japan) was administered for 11 months after pancreatectomy, and, subsequently, it was stopped due to the side effects (diarrhea, oral mucositis, fatigue, and hand-foot syndrome). Twenty-four months after the pancreatectomy, a solitary mass measuring 1.5 cm was found in segment 7 of the liver on CT (Fig. 2). The patient underwent posterior liver segmentectomy with a



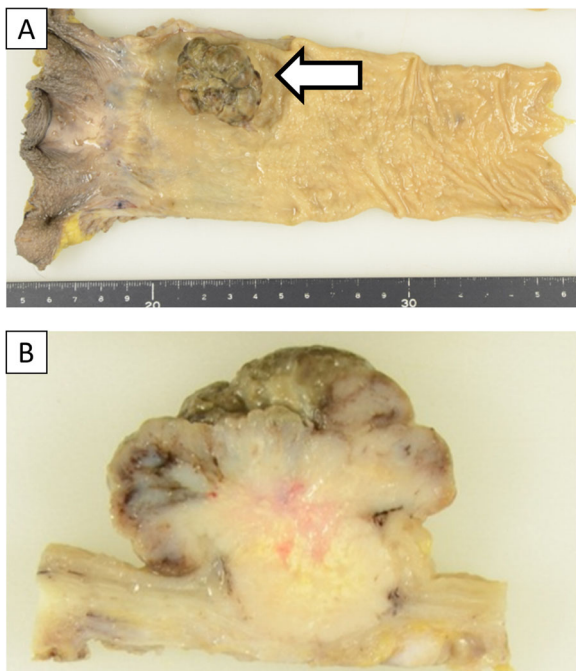
histopathological diagnosis of liver metastasis of PACC. Twenty-eight months after the pancreatectomy, the patient developed melena. Colonoscopy revealed a type-2 tumor at the lower rectum (1 cm above the dentate line, Fig. 3a), and biopsy revealed it to be rectal metastasis of PACC. CT and positron-emission tomography (PET) demonstrated the rectal tumor and an enlarged lymph node near the inferior mesenteric artery (Fig. 3b, c). The patient underwent laparoscopic abdominoperineal resection. Peritoneal dissemination was not found intraoperatively. Macroscopically, the tumor was 4 cm long, created polypoid elevation of its surface, contained nodular components and ulceration, and penetrated the rectal mucosa into the submucosa and muscularis propria (Fig. 4). Histopathology showed severe nuclear atypia of the tumor cells, and immunohistochemical analysis using CDX2, cytokeratin (CK)7, CK19, and CK20 confirmed the same profile as that of the specimen from pancreatectomy (Fig. 5). One lymph node out of 32 contained metastases. Thus, the pathological diagnosis was rectal and lymph node metastasis of PACC. All three surgical operations resulted in no severe postoperative complications. Periodic radiological examinations showed no tumor recurrence at 40 months after the pancreatectomy without additional chemotherapy. Our clinical decision was approved by the cancer board that included surgeons, oncologists, radiologists, and pathologists at the University Hospital of Tsukuba. Informed consent was obtained from the patient.

### Discussions and conclusions

PACC, a rare pancreatic cancer, demonstrates different behaviors and outcomes in comparison with PDAC. PDAC is the most common type of pancreatic cancer and is fatal in almost all cases. Frequently, it extends



**Fig. 3** Episode 3: rectal metastasis. Twenty-eight months after the pancreatectomy. **a** Colonoscopy showed type-2 tumor in the lower rectum, which was located 1 cm above the dentate line. Histopathological examination following biopsy revealed it to be metastasis of PACC. Arrow, rectal tumor; arrow head, dentate line. **b** Computed tomography (CT) scan showed that the rectal tumor was 2.6 cm in diameter and slightly enhanced with the contrast agent (arrow). **c** Positron-emission tomography (PET) showed abnormal uptake of nuclear agent at the rectal tumor (arrow)

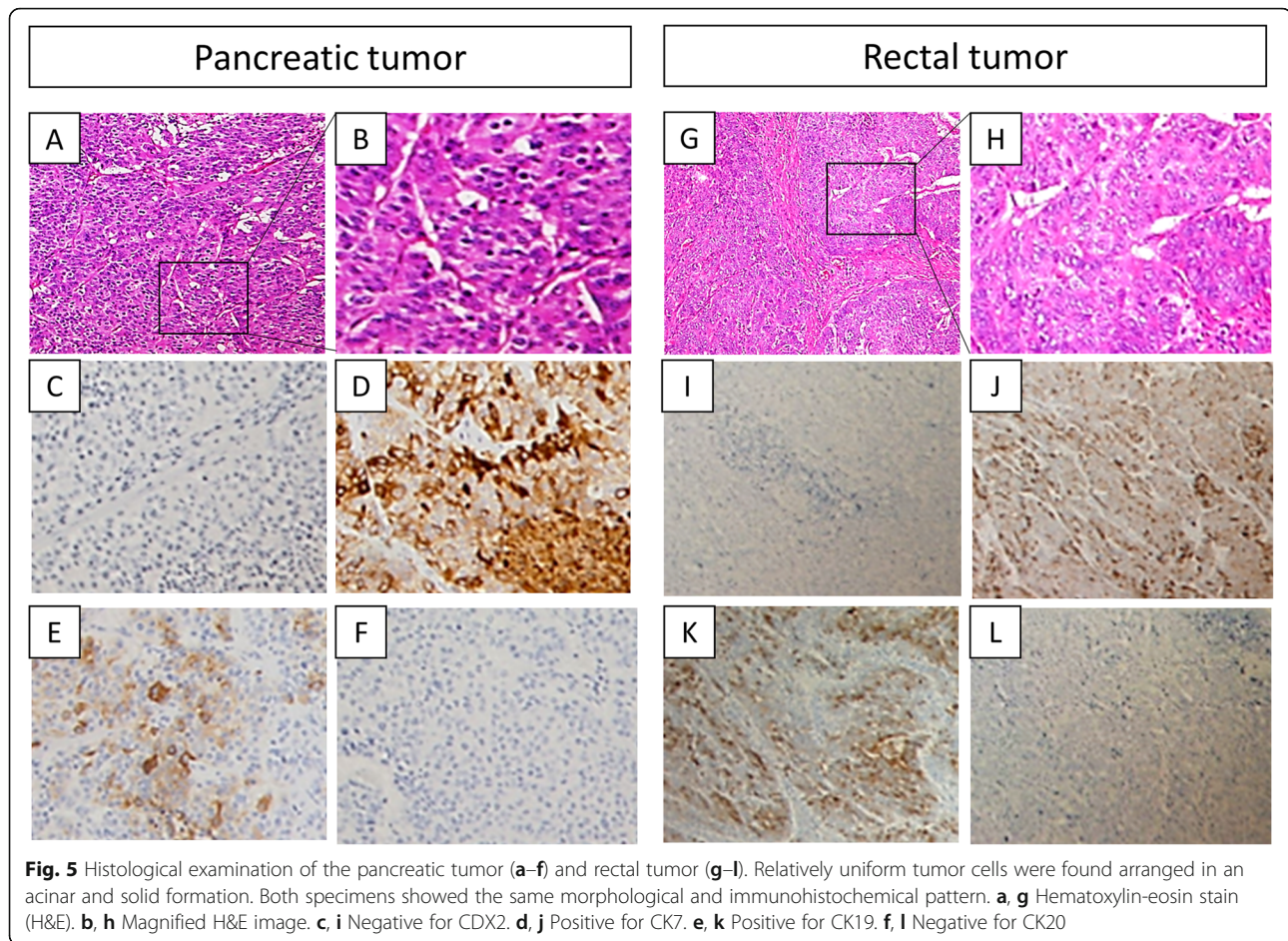


**Fig. 4** Gross features of the surgical specimen of the rectal tumor (**a**, frontal view). The cross-sectional loupe view demonstrated that the tumor created polypoid elevation of its surface, contained nodular components and ulceration, and penetrated the rectal mucosa into the submucosa and muscularis propria (**b**)

and/or metastasizes to the vessels, perineural tissue, adjacent organs, lymph nodes, liver, lungs, bones, and adrenals [7–10]. In contrast, though PACC is also invasive, it is less aggressive than PDAC [4, 11]. Schmidt et al. compared 865 cases of PACC with 367,999 of PDAC and demonstrated that the stage-specific 5-year survival rate in PACC is better than that in PDAC (e.g., PACC 40.2% vs. PDAC 9.8% at stage II) [12]. Wisnoski et al. showed that the median survival time in PACC was 47 months, whereas it was only 4 months in PDAC [13]. As in PDAC, surgical resection should be performed in PACC with a goal of achieving R0 margins [12]. For metastatic PACC, the chemotherapy protocol of PDAC has been used, which includes gemcitabine, 5-FU, oxaliplatin, CPT-11, and S-1, or their combinations [14–16]. A systematic review by Glazer et al. demonstrated that the disease control rate of chemotherapy was 55% and median survival time in metastatic PACC after chemotherapy was 17 months [17]. However, the efficacies of various chemotherapies have not been studied in controlled, prospective studies, and there are no definitive guidelines for the treatment of metastatic PACC. Additionally, as Abraham et al. demonstrated, PACC shows different clinicopathological and genetic features from PDAC [18]. Therefore, strategies other than chemotherapy may be considered for metastatic PACC.

Resection of metastases in PACC, as performed in this case, is not routinely performed [17]. We chose resection of the liver metastases for two reasons. First, liver metastases are often multiple in PACC [19]; however, in





**Fig. 5** Histological examination of the pancreatic tumor (a–f) and rectal tumor (g–l). Relatively uniform tumor cells were found arranged in an acinar and solid formation. Both specimens showed the same morphological and immunohistochemical pattern. **a, g** Hematoxylin-eosin stain (H&E). **b, h** Magnified H&E image. **c, i** Negative for CDX2. **d, j** Positive for CK7. **e, k** Positive for CK19. **f, l** Negative for CK20

this case, it was solitary, slow growing, and relatively small even 24 months after the primary pancreatectomy. Second, additional chemotherapy was not favorable for this patient due to the severe side effects of the previous treatment with S-1. After resection of hepatic metastasis, the rectal metastasis including mesorectal lymph node metastasis was found, and we estimated that it could be removed completely with additional resection, which would also be effective in preventing rectal bleeding or obstruction. Would these surgical resections be widely applicable to other cases of PACC? Hartwig et al. surveyed six cases of metastatic PACC and presented the effectiveness of surgical resection in these cases with limited metastases [20]. They studied the long-term survival of patients with synchronous or metachronous metastatic disease and non-metastatic disease who underwent resection and found no significant differences between the two groups with 2-year survival rates of 67% and 69%, respectively. We believe that potentially resectable metastases in PACC can be treated by surgical resection, as long as the surgery is associated with low morbidity.

The colon and rectum are quite rare sites of metastases from pancreatic cancer, as only a few such cases have been reported [21–23]. As an example, Ogu et al. reported a case of metachronous sigmoid colon metastasis of PDAC 24 months after pancreatectomy, which was treated by colectomy [23]. However, to the best of our knowledge, there are no reports of colorectal metastasis in PACC. As suggested by earlier studies, we performed immunohistochemical analysis including testing for CK7 and CK20 to confirm that the rectal tumor showed the same profiles as those of the primary PACC and that it was different from other rectal malignancies [23, 24]. It should be noted that acinar cell carcinoma would primarily occur in the colon and rectum as reported in several studies, in which the patients did not have any pancreatic tumors [25, 26]. In our case, a large invasive pancreatic tumor had presented 28 months before the detection of the rectal tumor; therefore, we consider the rectal tumor as not a primary tumor but rather a metastasis of PACC. The possibility that this rectal tumor was secondary to peritoneal dissemination was rejected since the peritoneum including the Douglas pouch was clear,

and the tumor was located mainly in the muscular and mucosal parts of the rectal wall while the adventitia was free from the tumor. We suspected that the colorectal metastasis might have developed via the hematogenous pathway due to severe vascular invasion of the primary pancreatic cancer followed by metastasis of the mesorectal lymph nodes; however, the true mechanism of rectal metastasis could not be demonstrated.

We presented a rare case of metachronous hepatic and rectal metastases of PACC treated with surgical resection. Our case indicates that aggressive and curative surgery can be an option in metastatic PACC. The therapeutic strategy against metastases from “less invasive” PACC should include surgical resection in addition to chemotherapy to improve the prognosis.

#### Availability of data and materials

These datasets generated and/or analyzed during the current study are publicly available from the corresponding author on reasonable request.

#### Authors' contributions

All authors substantially contributed to the manuscript. YOH, TO, TE, YD, YOW, YM, OS, and MK performed surgical resection and perioperative care. KH, YA, KO, and NO decided and approved the treatments. YOH and TO were major contributors in writing the manuscript. All authors read and approved the final manuscript.

#### Ethics approval and consent to participate

This study was approved by the ethics committee of University Hospital of Tsukuba. Written informed consent for this study was obtained from the patient.

#### Consent for publication

The patient was informed about the intention to publish a report of his medical case. Written informed consent for this study was obtained from the patient.

#### Competing interests

All authors declare that they have no competing interests.

#### Publisher's Note

Springer Nature remains neutral with regard to jurisdictional claims in published maps and institutional affiliations.

Received: 27 March 2018 Accepted: 26 July 2018

Published online: 03 August 2018

#### References

- Klimstra DS, Heffess CS, Oertel JE, Rosai J. Acinar cell carcinoma of the pancreas. A clinicopathologic study of 28 cases. *Am J Surg Pathol.* 1992;16: 815–37.
- Mulkeen AL, Yoo PS, Cha C. Less common neoplasms of the pancreas. *World J Gastroenterol.* 2006;12:3180–5.
- La Rosa S, Sessa F, Capella C. Acinar cell carcinoma of the pancreas: overview of clinicopathologic features and insights into the molecular pathology. *Front Med (Lausanne).* 2015;2:41.
- Holen KD, Klimstra DS, Hummer A, Gonen M, Conlon K, Brennan M, Saltz LB. Clinical characteristics and outcomes from an institutional series of acinar cell carcinoma of the pancreas and related tumors. *J Clin Oncol.* 2002;20: 4673–8.
- Matos JM, Schmidt CM, Turrini O, Agaram NP, Niedgerthmann M, Saeger HD, Merchant N, Johnson CS, Lillemoe KD, Grutzmann R. Pancreatic acinar cell carcinoma: a multi-institutional study. *J Gastrointest Surg.* 2009;13:1495–502.
- Al-Hader A, Al-Rohil RN, Han H, Von Hoff D. Pancreatic acinar cell carcinoma: a review on molecular profiling of patient tumors. *World J Gastroenterol.* 2017;23:7945–51.
- Conlon KC, Klimstra DS, Brennan MF. Long-term survival after curative resection for pancreatic ductal adenocarcinoma. Clinicopathologic analysis of 5-year survivors. *Ann Surg.* 1996;223:273–9.
- Renz BW, Boeck S, Roeder F, Trumm C, Heinemann V, Werner J. Oligometastatic disease in pancreatic cancer - how to proceed? *Visc Med.* 2017;33:36–41.
- Sener SF, Fremgen A, Menck HR, Winchester DP. Pancreatic cancer: a report of treatment and survival trends for 100,313 patients diagnosed from 1985–1995, using the National Cancer Database. *J Am Coll Surg.* 1999;189:1–7.
- Yachida S, Iacobuzio-Donahue CA. The pathology and genetics of metastatic pancreatic cancer. *Arch Pathol Lab Med.* 2009;133:413–22.
- Wang Y, Wang S, Zhou X, Zhou H, Cui Y, Li Q, Zhang L. Acinar cell carcinoma: a report of 19 cases with a brief review of the literature. *World J Surg Oncol.* 2016;14:172.
- Schmidt CM, Matos JM, Bentrem DJ, Talamonti MS, Lillemoe KD, Bilimoria KY. Acinar cell carcinoma of the pancreas in the United States: prognostic factors and comparison to ductal adenocarcinoma. *J Gastrointest Surg.* 2008;12:2078–86.
- Wisnoski NC, Townsend CM Jr, Nealon WH, Freeman JL, Riall TS. 672 patients with acinar cell carcinoma of the pancreas: a population-based comparison to pancreatic adenocarcinoma. *Surgery.* 2008;144:141–8.
- Hashimoto M, Hikichi T, Suzuki T, Tai M, Ichii O, Matsuhashi N, Kita E, Takahashi S, Okubo Y, Hakozaaki H, et al. Successful chemotherapy with modified FOLFIRINOX for pancreatic acinar cell carcinoma. *Clin J Gastroenterol.* 2017;10:564–9.
- Lowery MA, Klimstra DS, Shia J, Yu KH, Allen PJ, Brennan MF, O'Reilly EM. Acinar cell carcinoma of the pancreas: new genetic and treatment insights into a rare malignancy. *Oncologist.* 2011;16:1714–20.
- Seki Y, Okusaka T, Ikeda M, Morizane C, Ueno H. Four cases of pancreatic acinar cell carcinoma treated with gemcitabine or S-1 as a single agent. *Jpn J Clin Oncol.* 2009;39:751–5.
- Glazer ES, Neill KG, Frakes JM, Coppola D, Hodul PJ, Hoffs SE, Pimiento JM, Springett GM, Malafa MP. Systematic review and case series report of acinar cell carcinoma of the pancreas. *Cancer Control.* 2016;23:446–54.
- Abraham SC, Wu TT, Hruban RH, Lee JH, Yeo CJ, Conlon K, Brennan M, Cameron JL, Klimstra DS. Genetic and immunohistochemical analysis of pancreatic acinar cell carcinoma: frequent allelic loss on chromosome 11p and alterations in the APC/beta-catenin pathway. *Am J Pathol.* 2002;160:953–62.
- Nasser F, Motta Leal Filho JM, Affonso BB, Galastri FL, Cavalcante RN, DLN M, Segatelli V, LYI Y, Gansl RC, Tranchesi Junior B, ALV M. Liver metastases in pancreatic acinar cell carcinoma treated with selective internal radiation therapy with Y-90 resin microspheres. *Case Reports Hepatol.* 2017;2017: 1847428.
- Hartwig W, Denneberg M, Bergmann F, Hackert T, Hinz U, Strobel O, Buchler MW, Werner J. Acinar cell carcinoma of the pancreas: is resection justified even in limited metastatic disease? *Am J Surg.* 2011;202:23–7.
- Bellows C, Gage T, Stark M, McCarty C, Haque S. Metastatic pancreatic carcinoma presenting as colon carcinoma. *South Med J.* 2009;102:748–50.
- Fukatsu H, Nagahara Y, Ishiki K, Iwamura M, Hamada F. Pancreatic cancer metastasis to the rectum detected on colonoscopy. *Endoscopy.* 2009;41(2): E167–8.
- Ogu US, Bloch R, Park G. A rare case of metachronous skip metastasis of pancreatic cancer to the colon. *Am Surg.* 2012;78:E342–3.
- Ejtehadi F, Chatzizacharias NA, Brais RJ, Hall NR, Godfrey EM, Huguet E, Praseedom RK, Jah A. Colonic and anal metastases from pancreato-biliary malignancies. *World J Gastroenterol.* 2014;20:3693–7.
- Chiaravalli AM, Finzi G, Bertolini V, La Rosa S, Capella C. Colonic carcinoma with a pancreatic acinar cell differentiation. A case report. *Virchows Arch.* 2009;455:527–31.
- Terris B, Genevay M, Rouquette A, Audebourg A, Mentha G, Dousset B, Rubbia-Brandt L. Acinar cell carcinoma: a possible diagnosis in patients without intrapancreatic tumour. *Dig Liver Dis.* 2011;43:971–4.