

REVIEW

Open Access



# Changes in lipids composition and metabolism in colorectal cancer: a review

Alicja Pakiet<sup>1,2</sup> , Jarosław Kobiela<sup>3</sup> , Piotr Stepnowski<sup>1</sup> , Tomasz Sledzinski<sup>2\*</sup> and Adriana Mika<sup>1,2</sup>

## Abstract

Altered metabolism of lipids is currently considered a hallmark characteristic of many malignancies, including colorectal cancer (CRC). Lipids are a large group of metabolites that differ in terms of their fatty acid composition. This review summarizes recent evidence, documenting many alterations in the content and composition of fatty acids, polar lipids, oxylipins and triacylglycerols in CRC patients' sera, tumor tissues and adipose tissue. Some of altered lipid molecules may be potential biomarkers of CRC risk, development and progression. Owing to a significant role of many lipids in cancer cell metabolism, some of lipid metabolism pathways may also constitute specific targets for anti-CRC therapy.

**Keywords:** Colorectal cancer, Polar lipids, Oxylipins, Fatty acids, Lipidomics, Metabolism

## Introduction

Finding a disease, the course of which is not related to lipid alterations can be challenging. Lipids raise a growing interest as potential biomarkers in many clinical conditions. This highlights the importance of lipidomic studies in understanding, diagnosing and treating numerous human pathologies, among them cancer; the use of lipidomics could create an opportunity to design targeted therapies, prognostic or screening biomarkers [1]. In everyday clinical practice, lipid status is estimated based on serum concentrations of total cholesterol (TC), high density lipoprotein (HDL), low density lipoprotein (LDL) and triacylglycerols (TGs). While only a limited information can be obtained from the analysis of those lipid fractions, other currently available techniques, e.g. mass spectrometry, may provide a detailed insight into the structure and function of some specific lipid species. In this review paper, we discuss lipid alterations associated with colorectal cancer (CRC), with special emphasis on fatty acids (FAs) and their potential therapeutic and diagnostic applications in patients with this malignancy.

Most cancers found in the colon or rectum are adenocarcinomas arising from pathological lesions in the epithelial cells of colorectal mucosa [2]. Vast majority of CRCs are thought to evolve from conventional adenomas

through as a result of several dozens of mutations; this process is referred to as the adenoma-to-carcinoma sequence [3]. Most CRCs are sporadic malignancies and are not associated with inherited mutations in established cancer-related genes [4]. However, about 20–30% CRC may be associated with inherited mutations [5]. A progressive accumulation of multiple genetic mutations contributes to transition from normal mucosa to benign adenoma, severe dysplasia, and eventually, a frank carcinoma. It is estimated that approximately 15% of sporadic colon cancers are a consequence of malfunction in mismatch repair genes, whereas other 80–85% are associated with mutations in adenomatous polyposis coli (APC) gene. Furthermore, colon cancer may develop as a consequence of inflammatory bowel disease, on a different, yet uncharacterized pathway. Malignant transformation requires further genetic alterations [6]. Less than 50% of colon cancers harbor mutated KRAS, a protein that is involved in intracellular signal transduction [7, 8]. Approximately 50% of colonic lesions with high-grade dysplasia and about 75% of frank cancers may carry p53 mutations [6, 7]. A neoplastic disease cannot be effectively managed without the understanding of distinctive characteristics of cancer cells that contribute to tumor development. One of them is enhanced proliferation [9]. Two main genetic defects found in CRC, KRAS and p53 mutations, are both associated with enhanced proliferation [10, 11]. Intensively proliferating cancer cells display some unique metabolic patterns due to which they may obtain enough energy for

\* Correspondence: [tsledz@gumed.edu.pl](mailto:tsledz@gumed.edu.pl)

<sup>2</sup>Department of Pharmaceutical Biochemistry, Faculty of Pharmacy, Medical University of Gdansk, Dębinki 1, 80-211 Gdansk, Poland  
Full list of author information is available at the end of the article



new biomass synthesis. Cancer cells have a unique ability to generate energy in a nutrient-deficient environment. Since the preference of cancer cells for glycolysis rather than oxidative phosphorylations (OXPHOs) when oxygen is not limited has been demonstrated by Otto Warburg [12], the aberrant glucose metabolism became one of the hallmarks of cancer. However there has been a paradigm shift towards so called reversed Warburg effect, since research showed that each cancer has its unique metabolic features, and some may synthesize ATP by means of OXPHOs [13]. A recent evidence suggests that CRC cells rely on the reversed Warburg effect [14, 15], which opened new perspectives for the identification of new molecular therapeutic targets, among them FA oxidation [16]. Another frequently observed characteristic of cancer cells is their dependence on exogenous glutamine. Many oncogenic mutations seem to affect glutamine metabolism, which may open new therapeutic perspectives [17, 18]. Aside from the switch in glucose and glutamine metabolism, lipids may also play a role in the adaptation of cancer cells. It is well known that cancer cells show alterations of lipid metabolism. This may lead to structural changes in their membranes, disruption of energy homeostasis, cell signaling, gene expression and protein distribution, affecting a number of cell functions, such as apoptosis, autophagy, necrosis, proliferation, differentiation, growth, drug and chemotherapy resistance [19–22]. The role of lipids and their metabolism in cancer development and spread raises a growing interest of researchers, as shown in previous reviews [23–25]. The lipid metabolic pathways that have been affected in CRC cells include synthesis, desaturation, elongation and mitochondrial oxidation of the FAs. CRC belongs to the three leading causes of mortality in both male and female cancer patients [26, 27]. Non-invasive tests for CRC, such as guaiac-based fecal occult blood test (gFOBT), as well as more sensitive, fecal immunochemical test (FIT) and stool DNA test, are usually conducted on stool samples [28, 29]. Colonoscopy is an invasive screening method, considered a gold standard for the detection of colorectal neoplasms. Other screening instruments include flexible sigmoidoscopy and newer techniques, such as colon capsule endoscopy and magnetic resonance colonography [30]. However, all these techniques are invasive, and hence, both patients and researchers await easy to determine and accurate blood-derived biomarkers. Typically, biological material used for research purposes includes biopsy specimens of colorectal mucosa, surgical specimens of colonic lesions, blood serum or plasma and red blood cells (RBCs). However, this is blood which is particularly useful from the perspective of biomarker research, as it can be obtained more easily and less invasively than other biological materials.

### The lipidome changes in colorectal cancer patients

Lipidomics, a distinct branch of metabolome studies, provides information about the role of lipid dysregulation in various pathological conditions, such as metabolic syndrome [31], obesity [32], non-alcoholic fatty liver disease [33], diabetes [34] and cardiovascular diseases [35]. A growing number of studies analyzed the relation between lipids and various malignancies: breast cancer [36, 37], prostate cancer [38, 39], ovarian cancer [40, 41], hepatocellular carcinoma [42], lung cancer [43], pancreatic cancer [44] or bladder cancer [45]. Understanding the link between the disease and lipidome not only provides a better insight into its pathogenesis but is also vital for the development of novel biomarkers and therapeutic strategies.

Lipids are a diverse group of compounds belonging to various species. LIPID MAPS [46] classified them into eight groups based on the presence of ketoacyl and isoprene groups: FAs, glycerolipids, glycerophospholipids, sphingolipids, sterol lipids, prenol lipids, saccharolipids and polyketides [47]. The properties of various lipids and their biological functions change depending on the head-group [48]. The main structural component of each lipid group are fatty acids. FAs are structural components of complex lipids and play a wide range of roles in human body. FAs building phospholipids (PHLs) constitute the main fraction of lipid bilayer. Aside from serving as structural components, FAs, in form of glycerol esters (i.e. TGs), serve also as an energy reservoir in adipose tissue. Upon release from TGs by adipose tissue lipases, they are delivered to various organs as circulating free fatty acids (FFAs) [49]. FAs can be classified into three groups: saturated FAs (SFAs), without double bonds in acyl chain, monounsaturated FAs (MUFAs), with one double bond, and polyunsaturated FAs (PUFAs), with more than one double bond in acyl chain. Furthermore, they can be classified based on the number of carbon atoms, as short-chain FAs (SCFAs), with up to 6 carbons, medium-chain FAs (MCFAs), with 6 to 12 carbons, and long-chain FAs (LCFAa), with more than 12 carbons [50]. FAs can be both endo- and exogenous. De novo synthesis of palmitic acid from acetyl-CoA (acetyl-coenzyme A) is catalyzed by fatty acid synthase (FASN) [20] and other enzymes, among them those responsible for converting citrate to oxaloacetate and acetyl-CoA, and for carboxylation of acetyl-CoA. To enter bioactive pool, FAs needs to be activated, as FA-CoA. SFAs are converted into MUFAs by stearoyl-CoA desaturase 1 (SCD-1,  $\Delta$ -9-desaturase) [24, 25] and their chains are elongated by elongases (ELOVLs) [51]. The activated FAs may serve as substrates for the synthesis of TGs and PHLs or are transported to mitochondria whereby they undergo oxidation. The synthesis of endogenous FAs and their metabolism

are presented schematically in Fig. 1. Some FAs cannot be synthesized by human cells and must be provided with the diet. Both 18:3 n-3 FAs found in some plant oils (flaxseed, rapeseed, canola), walnuts and leafy greens, and 18:2 n-6 FAs contained in meat, poultry, cereal products and oil, are essential fatty acids [52, 53]. They act as precursors for the synthesis of longer n-3 and n-6 PUFAs, competing for the same enzymes [54]. Long-chain n-3 PUFAs can be also provided with fish products, the global consumption of which is generally too low [55]. The activity of FAs and complex lipids they build is determined by their structure. The length of acyl chain and the degree of its saturation determine various functions of FAs, e.g. the rigidity of plasma membranes and biological effects in humans. SCFAs synthesized by gastrointestinal microbiota, especially butyrate, are the primary energetic substrate for colonocytes, promote

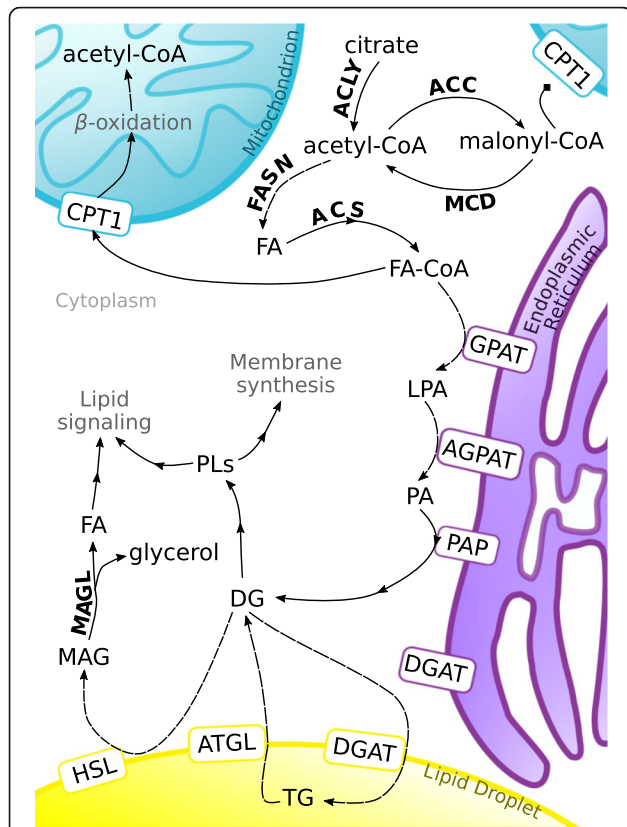
colonic health and have anti-inflammatory properties [50]. The degree of unsaturation determines the susceptibility of unsaturated FAs to oxidation; PUFAs are generally more prone to oxidation due to the presence of multiple double bonds [56]. Also position of the double bond within the PUFA molecule is vital from the functional perspective, since n-6 PUFA metabolites are generally proinflammatory whereas n-3 PUFAs act as anti-inflammatory compounds. Therefore, the role of lipids in various pathological conditions should be analyzed not only at the group level, but also at the species level. Concentration of circulating non-esterified fatty acids (NEFAs), also referred to as FFAs, may be a predictor of metabolic status in various conditions associated with obesity [57]. Available evidence suggests that obesity may be associated with increased risk of CRC [58, 59]. Elevated level of FFAs in serum may be a marker of oxidative stress [60], enhanced lipotoxicity [61] or hypertriglyceridemia.

#### Alterations of saturated fatty acids in CRC

##### *Dietary and endogenous saturated fatty acids*

The tumor development is associated with enhanced lipogenesis [24, 62–64]. De novo lipogenesis was shown to be associated with enhanced saturation of membrane lipids in colorectal cancer cell line, HCT116. SFAs, abundant due to increased activity of FASN, are incorporated into membrane PHLs, making the cells less susceptible to free radicals and penetration of therapeutics [65]. Increased activity of FASN is also associated with  $\beta$ -oxidation of endogenous lipids and promotion of cellular respiration [20]. These processes are induced by mammalian target of rapamycin kinase (mTOR kinase) signaling pathway, which activates the synthesis of proteins being responsible for growth, division or angiogenesis during tumorigenesis [66, 67] and metastasis [68]. Wang et al. demonstrated that FASN knockdown results in downregulation of cancer invasion and spread in cell lines [69]. While cancer cells generally show preference for endogenous FAs, some malignancies may also require provision of exogenous fatty acids [70].

According to one hypothesis, an increase in the incidence of CRC in eastern populations may result from a change in dietary preferences in favor of SFA-rich western style diet [71]. A primary dietary source of SFAs are animal products. High dietary intake of SFAs has been implicated in obesity-associated gene expression profile and metabolic syndrome [72, 73] and was shown to impair white adipose tissue function [74] and to induce insulin resistance [75]. The supplementation of monocytic cell lines with SFAs may activate nuclear factor  $\kappa$ B, up-regulate cyclooxygenase-2 and toll-like receptors 2 and 4 (TLR2 and TLR4) [76]; the TLRs are known to play a role in carcinogenesis associated with inflammation [77].



**Fig. 1** Overview of endogenous metabolism of fatty acids at the cellular level. Modified from Currie et al. (2013) [24]. DG: diacylglycerol, FA: fatty acid, LPA: lysophosphatidic acid, MAG: monoacylglycerol, MUFA-CoA: monounsaturated fatty acid-coenzyme A, TG: triacylglycerol, ACC: acetyl-CoA carboxylase, ACS: acetyl-CoA synthetase, ACLY: ATP citrate lyase, FASN: fatty acid synthase, MAGL: monoacylglycerol lipase, MCD: malonyl-CoA decarboxylase, AGPAT: 1-acylglycerol-3-phosphate-O-acyltransferase, ATGL: adipose triglyceride lipase, CPT1: carnitine palmitoyltransferase I, DGAT: diacylglycerol O-acyltransferase, GPAT: glycerol-3-phosphate acyltransferase, HSL: hormone sensitive lipase, PAP: phosphatidate phosphatase

Dietary intake of SFAs has also an impact on serum lipoproteins. Substitution of cis-PUFAs and MUFAs with an equivalent amount of energy from dietary SFAs contributed to an increase in serum levels of total cholesterol, HDL-cholesterol, LDL-cholesterol and triglycerides, although this effect was statistically significant only in the case of PUFA replacement [78]. The results of previous studies analyzing a link between dyslipidemia and CRC are inconclusive [79–82]. However, dietary modifications alone may not be enough to explain the etiopathogenesis of a given condition; for example, while a short-term change in diet showed only a minimal correlation with genes in the pathway of an inflammatory marker, prostaglandin E2 (PGE2), an increase in colonic SFAs stimulated a rise in PGE2 concentration [83]. Although a dietary intake of SFAs (estimated with a diet questionnaire) correlated positively with rectal cancer risk, in contrast to fatty acids of plasma PHL, it showed no significant association with the overall risk of CRC [84].

#### **Enhanced elongation of saturated fatty acids in CRC**

According to Kondo, CRC patients had significantly lower serum levels of long-chain FAs, 14:0, 15:0 and 18:0, and presented with significantly higher serum levels of very long-chain FAs (VLCFAs), 24:0, 25:0, 26:0, 28:0 and 30:0, than healthy controls [85]. However, Zhang observed more than a 50% increase in 18:0 content in cancerous tissue, but without concomitant changes in 14:0 and 16:0 levels [86]. The Singapore Chinese Health Study showed that while rectal cancer patients and healthy subjects did not differ significantly in terms of 16:0 and 18:0 plasma PHL levels, the 16:0 content correlated inversely with colon cancer risk [87]. In turn, Mendelian randomization analysis pointed to a significant relation between 18:0 content and CRC risk [88]. Some studies demonstrated that CRC was associated with a significant increase in serum level of VLCFAs [85, 89]. Our previous study showed that cancerous tissue contained more 22-, 24- and 26-carbon SFAs and MUFAs than normal colonic tissue [22]. Moreover, we found 26:0 cerotic acid exclusively in the sera of CRC patients, and hence, proposed it as a serum biomarker of this malignancy [22]. However, Kondo observed only a 1.33-fold increase in serum 26:0 in CRC patients [85]. The lack of 16:0 accumulation implies that the products of FASN may serve as substrates for other enzymes. The activity of various elongating enzymes ELOVLs may be cancer type-specific, e.g. ELOVL7 is involved in prostate cancer [90], ELOVL2 in breast cancer [91] and ELOVL1 and ELOVL6 in triple negative breast cancer [36]. Enhanced activity of elongases in CRC tissue, assessed based on elongation index values (18:0/16:0 and 22–26:0/20:0 ratios) and higher ELOVL1 and ELOVL6 mRNA levels, contributed to an increase in

saturated and monounsaturated VLCFA content in tumor tissue, and probably was also a reason behind the elevated serum concentrations of VLCFAs. Plausibly, the latter may serve as a biomarker of CRC [22].

#### **Endogenous and exogenous monounsaturated fatty acids**

Oleic acid (18:1 n-9, OA) is one of the most abundant FAs in human tissues and the most abundant MUFA [22, 86, 92]. It is the main dietary MUFA provided with both animal products and plant oils, especially with olive oil. The latter is an essential component of Mediterranean diet [93], which has been implied to protect against cancer [94]. However, the exact mechanism through which OA would interfere with CRC is still not fully understood. Both oleic acid and palmitic acid trigger non-canonical autophagic response in human cancer cells, but through different mechanisms (beclin-1-independent autophagy that requires intact Golgi apparatus or via the activity of 5'AMP-activated protein kinase (AMPK), protein kinase R (PKR) and c-Jun N-terminal protein kinase 1 (JNK1)) [95]. The role of autophagy in cancer progression is ambiguous; while it can suppress cancer development at its early stages, preventing accumulation of mutated cells or aggregation of reactive oxygen species (ROS), it can also boost the resilience of cancer cells via supply of extra energy whenever nutrients are sparse [96]. Moreover, oleic acid was shown to decrease mRNA levels for some FA transporters and receptors and to reduce lipid droplet content in colonic adenocarcinoma cells [97]. The level of oleic acid was demonstrated to be significantly reduced in CRC tumor tissue, which was associated with a shift from stage B to stage C in Dukes classification [86].

MUFAs can be also synthesized *in vivo* by SCD-1, an enzyme expressed in all major tissues, as well as by SCD-5, found in the pancreas and brain [98]. Available evidence points to a link between various cancer types and SCD-1 expression [99–102]. Overexpression of SCD-1 and other enzymes, namely ATP-binding cassette sub-family A member (ABCA1), long chain acyl-CoA synthetase (ACSL1) and 1-acyl-sn-glycerol-3-phosphate acyltransferase alpha (AGPAT1), was associated with increased risk of recurrence and worse outcomes in stage II colon cancer [103]. However, the upregulation of SCD-1 was not reflected by an increase in serum and tissue levels of 18:1, plausibly because of the incorporation of this FA into complex lipids or its utilization as a substrate for other enzymes involved in lipid metabolism [86, 87]. The relation between cancer mortality and activity of SCD-1, estimated on the basis of serum cholesteryl ester ratio of 16:1 n-7 and 16:0, and presence of a single nucleotide polymorphism in its gene, suggests that endogenous synthesis of MUFAs may exert an effect on cancer outcome [104]. As a result, SCD-1 became a

target for anticancer therapy [105, 106]. ACSL/SCD-1 pathway can regulate the invasiveness of cancer cells and serve as a predictor of survival. Further, silencing of SCD-1 with siRNAs was shown to activate apoptosis in HCT116 cells [107].

### **n-3 and n-6 polyunsaturated fatty acids**

PUFAs are represented by two families, n-3 and n-6, which exert opposite effects on inflammation. n-3 PUFAs are known to exhibit anti-inflammatory properties. Inflammation is one of the hallmarks of cancer. Patients with inflammatory bowel disease have increased risk of CRC [108, 109]. n-3 PUFAs can attenuate inflammation via multiple mechanisms, inter alia acting via their oxidized derivatives [110, 111]. Long chain n-3 PUFAs, specifically 20:5 n-3 (eicosapentaenoic acid, EPA) and 22:6 n-3 (docosahexaenoic acid, DHA) found in oily fish, were shown to interfere in vitro with the kappa-light-chain-enhancer of activated B cells (NF- $\kappa$ B) signaling system, downregulating nuclear NF- $\kappa$ B p65 component and NF- $\kappa$ B inhibitor ( $\text{I}\kappa\text{B}\alpha$ ) and upregulating cytoplasmic NF- $\kappa$ B p50 in a time- and dose-dependent manner [112]. The upregulation of NF- $\kappa$ B was observed in some cell lines, including human CRC cells [111]. While n-3 PUFAs were shown to exert an anti-inflammatory effect, published data about the link between consumption of fish or supplementation with fish oil and the risk of CRC are inconclusive. While some observational studies demonstrated that dietary provision of n-3 PUFAs from those sources was associated with a decrease in CRC risk [113] and lower mortality from that malignancy [114], others did not find enough evidence to support this link [115]. Although a recent meta-analysis of nine studies demonstrated an overall improvement in the levels of inflammatory markers, IL-6, albumin and CRP/albumin ratio, it also documented difficulties in obtaining comparable data about the anti-inflammatory effects of DHA or EPA supplementation; the authors proposed that at least some of the results might have been influenced by inconsistencies in supplementation protocols [116]. Moreover, it must be stressed that n-3 PUFA supplements may contain some proportion of n-6 PUFAs and SFAs, which also might interfere with their beneficial effects [117]. Finally, the supplements in which a major n-3 PUFA is ALA may offer limited advantages due to low impact on DHA and EPA levels resulting from limited conversion rates on n-3 PUFA pathway [118].

Another mechanism through which n-3 may exert a beneficial biological effect and prevent carcinogenesis, is disruption of lipid rafts associated with their low affinity for cholesterol and saturated chains and resultant lesser rigidity of formed structures [119, 120]. Proteins embedded in lipid rafts were shown to be involved in cell

signaling, proliferation, adhesion and apoptosis [121, 122]. Turk et al. reported that DHA but not EPA or 20:4 n-6 (arachidonic acid, AA) enhanced phosphorylation of epidermal growth factor receptor (EGFR) and reduced downstream signaling in young adult mouse colonic (YAMC) cells and in a murine model [123]. Enhanced phosphorylation of EGFR after supplementation with n-3 PUFAs was also observed in breast cancer cell lines [124]. Those findings are worth emphasizing as EGFR is also known to be overexpressed in most CRCs [125].

n-6 PUFAs are abundant in plant oils [126]. Most FAs from the n-6 PUFA family, especially AA and its oxidized products, show proinflammatory properties [127], and thus, may act as tumor promoters. However, the evidence from observational studies analyzing the role of AA in CRC risk is inconclusive [128]. High dietary n-6/n-3 PUFA ratio may be an important risk factor of other epithelial malignancies, such as aggressive prostate cancer [129], breast cancer [37] or invasive lung cancer [43]. Zhang et al. demonstrated that n-6/n-3 PUFAs ratio in cancerous tissue was significantly higher than in adjacent normal tissue [86], and this observation was later confirmed in another study [130]. However, caution has to be applied when studying effects of n-3 and n-6 PUFA metabolites. Relying simply on n-6/n-3 PUFA ratio may be a source of bias, since some n-6 derived oxidation products may in fact have anti-inflammatory properties [131].

Humans do not have the ability to synthesize linoleic acid (LA, 18:2 n-6) and  $\alpha$ -linolenic acid (ALA, 18:3 n-3) de novo due to the lack of  $\Delta$ -12-desaturase and  $\Delta$ -15-desaturase [132]. Previous studies demonstrated that CRC patients can be distinguished from healthy controls and individuals with colorectal polyps based on their serum levels of LA and ALA [133, 134]. In another study, CRC patients presented with nearly 50% lower serum concentrations of 18:3 n-6 ( $\gamma$ -linolenic acid, GLA) than healthy controls [85]. Additionally, GLA was proposed as a biomarker for CRC risk because its altered concentrations could be observed as early as at the adenoma stage, but without an evident decreasing or increasing tendency across stages I to IV [85]. Another study showed that the level of 18:2 n-6 in cancerous tissue was significantly higher than in adjacent normal tissue, and differed depending on Dukes stage [86]. However, an opposite relationship was found in another larger study including more than twice as many CRC patients, in which 18:2 n-6 concentration in cancerous tissue was significantly lower than in normal tissue and did not correlate with TNM stage [130]. Certain proportion of dietary 18:2 n-6 and 18:3 n-3 are converted to long-chain PUFAs by elongation and desaturation. Specifically, 18:3 n-3 is a substrate for EPA and DHA,

whereas 18:2 n-6 is converted to AA through combined action of elongases,  $\Delta$ -5 and  $\Delta$ -6 desaturases [52]. However, the product of 18:2 n-6 elongation can be also converted by  $\Delta$ -5-desaturase to a unique n-6 PUFA, dihomo- $\gamma$ -linolenic acid (DGLA) 20:3 n-6, which exerts an opposite biological effect to AA [126, 135]. According to Butler et al., the plasma indices of n-6 PUFA desaturation pathway correlated positively with increased colon cancer risk [87].

The growing popularity of dietary supplements containing conjugated linoleic acids (CLA) and their widely reported beneficial effects observed in animals, *inter alia* anticancer activity [136], stimulated research on the link between CLAs and CRC. The term 'CLA' refers to the group of LA isomers, both *cis* and *trans*, with conjugated double bonds. The main natural dietary source of CLAs are ruminant-derived dairy products that contain primarily *cis*-9 and *trans*-11 isomers [137]. In turn, commercially available supplements are racemates of *cis*-9, *trans*-11, *trans*-10 and *cis*-12 CLAs. Two mechanisms of action of CLAs have been proposed. First, CLAs may reduce the level of harmful COX-2 metabolites [138], and second, they may act as ligands for peroxisome proliferator-activated receptors (PPARs) [137, 139]. Some studies demonstrated beneficial effects of CLAs in cell lines [140] and murine models [137] and a decrease in tumor invasiveness and improvement of inflammatory status were observed in CLA-supplemented rectal cancer patients [141, 142]. However, CLAs should be used with caution in cancer patients, as the study in healthy volunteers demonstrated that their administration may cause loss of appetite, which would pose a risk of cachexia in persons with malignancies [143].

### Products of lipid oxidation

Link between oxidative stress, chronic inflammation and an array of chronic disorders have been studied extensively in cardiovascular diseases [144], diabetes mellitus [145], rheumatoid arthritis [146] and cancer [147–149]. Oxidative stress damages various molecular species, including proteins, nucleic acids and lipids. Oxidized lipid products may be formed either during a non-specific peroxidation facilitated by oxidative stress, as lipid peroxidation products (LPPs), or be generated in enzymatic reactions catalyzed by cyclooxygenases (COX), lipoxygenases (LOX) and cytochromes p450 (CYP450), as oxylipins. Due to presence of multiple double bonds, PUFAs are most susceptible to oxidation; while n-3 PUFA-derived oxylipins generally produce favorable biological effects, the products of n-6 PUFA oxidation usually have proinflammatory properties.

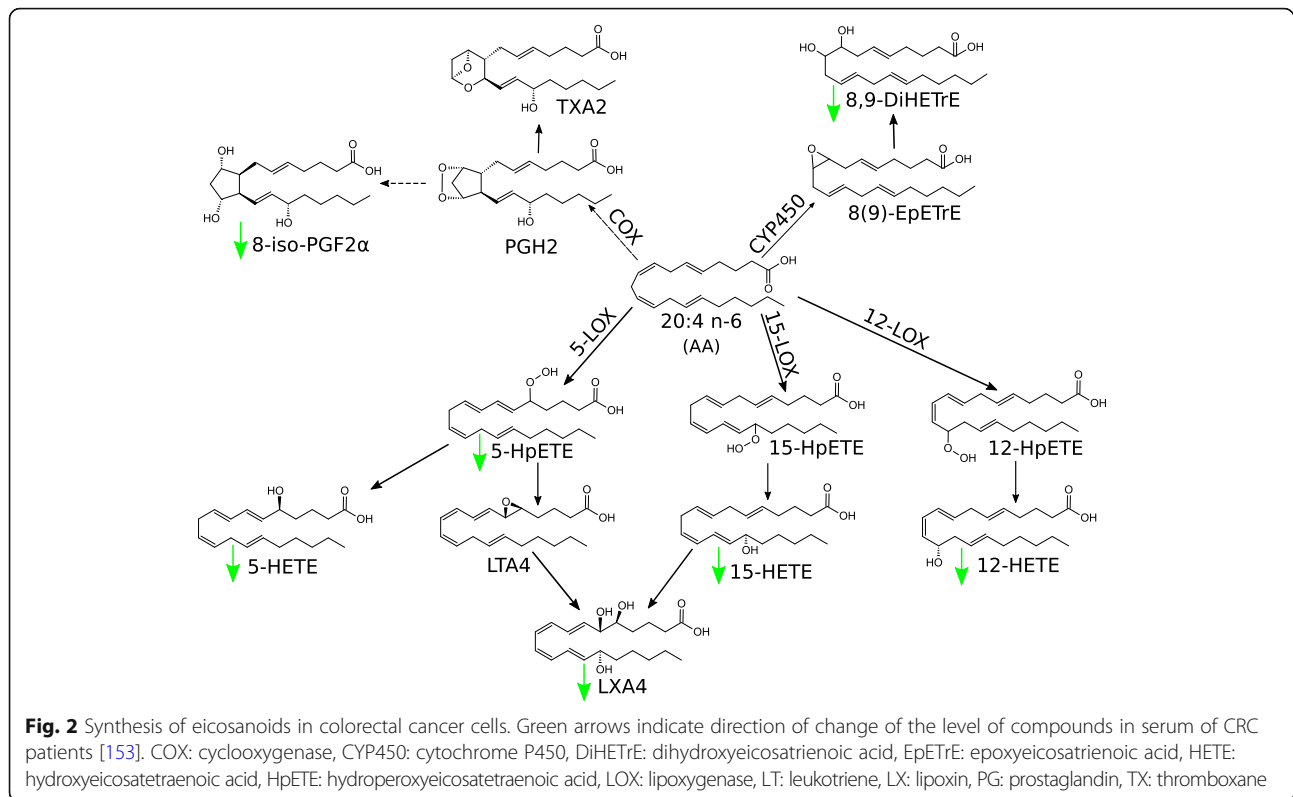
### Products of oxidative stress

Carcinogenesis is associated with oxidative stress [150, 151]. The breakdown of PUFAs and PUFA-containing complex lipids starts from the formation of lipoperoxyl

radical, a product of ROS-mediated damage to a susceptible double bond. A reaction between the lipoperoxyl radical and lipid molecules results in formation of lipid radicals and lipid hydroperoxides, which are further degraded to secondary products [56]. The markers of oxidative stress are isoprostanes (isoPs), containing primarily F-type prostane rings derived from AA, and DHA-derived neuroprostanes [152]. Among non-enzymatically formed arachidonic acid metabolites series 2 isoprostanes, CRC patients presented with lower serum levels of 8-iso-PGF<sub>2</sub> $\alpha$  and elevated serum concentrations of 2,3-dinor-8-iso-PGF<sub>2</sub> $\alpha$  [153]. The end-products of ROS-mediated lipid breakdown are 4-hydroxynonenal (HNE) and malondialdehyde (MDA), both found at elevated concentrations in CRC tissues [154]. Both MDA and 4-HNE are established mutagens in humans [155, 156]. However, 4-HNE may also exert an anticarcinogenic effect, as it was shown to inhibit the activity of telomerase in Caco-2 and HT-29 cell lines [157].

### Enzymatically formed pro- and anti-inflammatory oxylipins

Oxidized lipid species can be also generated in enzymatic reactions catalyzed by COXs, LOXs and CYP450. The process begins with the release of FA from membrane phospholipid. The reaction is catalyzed by an enzyme from cytosolic phospholipase A<sub>2</sub> family (cPLA<sub>2</sub>) [158]. However, also adipose TG lipase (ATGL) has been implicated as an enzyme involved in the release of substrate for oxylipin production from mast cell membranes [159]. Baseline concentration of oxylipins seems to be modulated by dietary intake of PUFAs [160]. To this date, the most extensively studied oxylipins have been AA derivatives, referred to as eicosanoids, since cPLA<sub>2</sub> $\alpha$  shows a preference for AA release [158] enabling downstream enzymes to synthesize more than 50 AA derivatives [161]. However, some eicosanoids, namely resolvins, protectins and maresins, may be also synthesized from n-3 PUFAs [32]. Chemical structures of some representative eicosanoids synthesized from AA on various enzymatic pathways are shown in Fig. 2. Oxidation of AA on COX-2 pathway results in generation of series 2 oxylipins: prostaglandins and thromboxanes [162]. Previous studies demonstrated that concentration of prostaglandin PGE<sub>2</sub> correlated positively with cancer stem cell (CSC) markers in human colorectal tumor samples; furthermore, PGE<sub>2</sub> was shown to promote CSC expansion in a murine model [163]. However, the available evidence in this matter is inconclusive, since according to Zhang et al., serum concentration of PGE<sub>2</sub> and its product, 20-hydroxy-PGE<sub>2</sub> in CRC patients were significantly lower than in healthy controls [153]. The group of LOX-derived AA oxylipins includes hydroxyeicosatetraenoic acids (HETEs), also synthesized on CYP450 pathway, and leukotrienes. 12S-HETE was



shown to promote the invasiveness of colorectal adenocarcinoma cells via activation of myosin regulatory light chain 2 (MLC2), Rho/Rho-associated coiled-coil containing protein kinase (Rho/ROCK) and  $\text{Ca}^{2+}$  signaling [164]. Leukotrienes are inflammatory mediators synthesized from AA and EPA on 5-LOX (5-lipoxygenase) pathway. LTB<sub>4</sub> (leukotriene B<sub>4</sub>) is a well-established pro-inflammatory compound; its proinflammatory activity is inter alia associated with its ability to promote formation of reactive oxygen species [165]. 12-keto-LBT<sub>4</sub>, an inactive product of LBT<sub>4</sub> conversion via LTB<sub>4</sub>–12-hydroxydehydrogenase/15-oxo-prostaglandin-13-reductase (LTB<sub>4</sub>DH/15oPGR), was shown to be considerably downregulated in CRC patients sera, and thus, has been proposed as a potential biomarker of this malignancy [153]. Moreover, 15S-HETE concentration is significantly lower in serum of CRC patients that was not associated with Duke's stage, which suggests drop in its levels early in cancer development [166]. 15S-HETE is a metabolite of AA known for its anti-inflammatory properties. As an antagonist of cancer promoting 20-HETE, 19-HETE may prevent proliferation of cancer cells. Indeed, one study showed that CRC patients presented with lower serum concentrations of 19-HETE and lower values of 19-HETE/20-HETE ratio [153]. Also, some specialized pro-resolving mediators (SPMs) were analyzed for their association with adenoma occurrence risk. However, blood levels of neither lipoxin A<sub>4</sub> (a product

of AA) nor resolvin D1 (a derivative of DHA) were accurate enough to identify patients with a past history of adenoma [167]. According to Ritchie, an inverse correlation between TNM stage and serum concentrations of some hydroxylated, polyunsaturated ultra-long-chain fatty acids (hPULCFAs) were found in CRC patients participating in an untargeted biomarker discovery study [168]. hPULCFAs resemble some derivatives of FAs, namely lipoxins, resolvins and protectins [168], but their exact structure and biological role are yet to be explained. Further studies demonstrated that a moiety with molecular mass of 446 ( $\text{C}_{28}\text{H}_{46}\text{O}_4$ ), referred to as GTA-446, may be a marker of CRC risk in healthy persons [168, 169] and is more sensitive than blood gFOBT [170]. However, other authors put into question the predictive value of GTA-446, and proposed that it could be rather used as a diagnostic marker [171].

#### Polar lipids in blood and tissues of CRC patients

Polar lipids (PLs) are the most abundant lipids in cells and inner compartment membranes. Thus, the structure of PLs determines physical properties of membrane bilayer; a change in the degree of saturation of FAs that build PLs may affect membrane fluidity and consequently, also its permeability. Analysis of plasma PLs in CRC patients revealed altered profiles of FAs, namely an increase in total SFAs and a decrease in PUFA content [172]. Published evidence suggests that an increase in

SFA fraction of plasma PLs may be associated with greater risk of CRC [84], colon cancer [87], and colon adenoma [173]. Incorporation of SFAs contributes to ER stress-induced apoptosis [174]. Additionally, also an increase in elaidic (trans-9 18:1) PL fraction correlated with adenoma presence [173].

Mass spectrometry-based imaging studies documented an increase in MUFA content, positive correlation with the levels of PC-32:1, PC-34:1 and PC-36:1 phosphatidylcholines (PCs) in cancerous tissue, and a downregulation of polyunsaturated FAs and polyunsaturated PLs, except from a 1.49-fold increase in phosphatidic acid PA-36:2 [175]. Another signature of CRC seems to be a significant upregulation of PC-16:0/16:1 [176], lysophosphatidylcholines LPC-16:0, LPC-18:1 and PC-16:0/18:1 [177]. The authors of one lipidomic study demonstrated considerable alterations of several complex plasma lipids in CRC patients, and based on the analysis of receiver operating characteristic (ROC) curve proposed phosphatidylglycerol PG-18:0/16:0, sphingomyelin SM-d18:1/24:1 (42:2), ceramide Cer-d18:1/26:4 (elevated), LPC-18:3, LPC-18:2, phosphorylethanolamines PE-18:2/18:1, PE-18:1/20:2 and SM-38:8 (decreased) as biomarkers of this malignancy [89]. The use of biomarker clusters may have greater discriminative power than single molecules. In one study, patients with early CRC were identified accurately based on their serum levels of palmitic amide, oleamide, hexadecanedioic acid, 12-hydroxystearic acid, 20:3 n-3, 14:0, lysophosphatidic acid LPA-16:0, LPA-18:0 and LPC-16:0, with the area under the ROC curve equal 0.991, 0.981 sensitivity and 1.000 specificity [178]. Similar approach, with a panel of various metabolites, among them lipids, was also used to predict the recurrence and spread of CRC and survival in patients with this malignancy [179]. Also, the activity of enzymes involved in PL metabolism may be altered in cancer patients. Upregulation of choline kinase  $\alpha$  (CHK $\alpha$ ) results in an increase in PC content, whereas the overexpression of lysophosphatidylcholine acyltransferases, LPCAT1 and LPCAT4, contributes to alterations of PL profiles [175, 180]. In one study, cancer tissue contained elevated levels of PA-36:2 and less PA-38:3, PA-40:5, PE-38:4, sphingomyelins SM-22:0 and SM-22:4 [175].

Sphingolipids (SPLs) are a group of complex lipids, containing a sphingoid base as a backbone, linked to fatty acid chain. SPLs can be either synthesized de novo from L-serine and palmitoyl-CoA in endoplasmic reticulum yielding membrane-bound dihydroceramide, or originate from the degradation of complex sphingolipids on the salvage pathway [181, 182]. CRC patients may present with elevated plasma levels of some glycosphingolipids containing glucose (Glu) or lactose (Lac), namely GluCer-42:3, GluCer-42:2, GluCer-36:4, GluCer-34:1, GluCer-33:2, LacCer-42:4, LacCer-40:1, LacCer-40:2, LacCer-40:4,

LacCer-38:1 and LacCer-35:1 [89]. CRC tissues were shown to contain more Cer-16:0, Cer-24:0 and Cer-24:1, and less Cer-18:0 and Cer-22:0, as well as elevated mRNA levels for ceramidase synthases, CerS1, CerS2, CerS5 and CerS6 [183, 184].

Hartman et al. found that Cer present in HCT-116 colon cancer cell line originated primarily from de novo synthesis [185]. Overexpression of CerS4 leads to inhibition of cell proliferation and an increase in Cer-16:0 content. In turn, upregulation of CerS6 was shown to be associated with an increase in Cer-18:0 and Cer-20:0 levels. In CerS2-overexpressing cells, supplementation with nervonyl- or lignoceryl-CoA resulted in upregulation of very long chain-containing Cer species, Cer-24:0 and Cer-24:1, and enhanced proliferation. Further studies showed that the activity of CerS2 may partially depend on ELOVL1 expression [186]. Also an important role of a balance between long- and very long-chain FA-containing Cer was emphasized on the basis of the observation on diminished apoptosis in the case of CerS4/CerS6 and CerS2 co-expression [186]. Also Shen reported on elevated plasma levels of Cer that contained long-chain FAs (Cer-d18:1/26:4) in CRC patients [89].

Cer are proapoptotic molecules involved in stress-induced signaling pathways, among them, in JNK pathway [187, 188]. The inhibition of SCD-1 in human adenocarcinoma LOVO cells was shown to be associated with a significant decrease in proliferation rate and accumulation of saturated endoceramides, Cer-16:0 to Cer-24:0. The overproduction of Cer-18:0 to Cer-24:0 ceased upon supplementation with 18:1 n-9. Administration of SCD-1 inhibitor caused a delay in tumor growth in xenograft mice, which could be reversed after blockade of Cer biosynthesis. These findings imply that Cer may influence the SCD-1-mediated apoptosis due to a cross-talk between these two pathways [184].

Cer is a central molecule to sphingolipid metabolism. Following cleavage of FAs by ceramidase, the remaining sphingosine can be phosphorylated by sphingosine kinases (SphK1 or SphK2) to form sphingosine-1-phosphate (S1P) [189]. Some studies demonstrated that tumor tissues contain significantly more SphK1 than normal colonic mucosa [190, 191]. SphK1 expression knockdown in colorectal adenocarcinoma cell lines was associated with a decrease in tumor cell migration and invasiveness, probably due to interference with epithelial-mesenchymal transition (EMT) [191], a process observed during cancer progression and spread [192].

To summarize, published evidence suggests that CRC may be associated with alterations in PLs. Since PLs are important structural and functional molecules involved in cell growth and differentiation, their alterations may also play a role in carcinogenesis [193]. The evidence from mass spectrometry studies points to PLs as



potential cancer biomarkers, but diagnostic and prognostic value of those molecules still needs to be verified in large clinical studies [194, 195].

#### **Association between blood and tumor tissue triacylglycerols and CRC**

TGs are the primary depot of highly-concentrated metabolic energy released from adipose tissue in form of FAs and delivered with blood to target tissues. Dietary TGs are hydrolyzed in the intestine, re-esterified in the enterocytes, conjugated with cholesterol and proteins in form of chylomicrons, and eventually, released into the blood. Moreover, TGs may originate from endogenous synthesis in the liver and be released in the form of very-low-density-lipoproteins (VLDL). Elevated concentration of TGs observed during the course of dyslipidemia is an established risk factor of cardiovascular disease [196]. Published data about the link between blood TGs and CRC risk are inconclusive. According to some authors, elevated serum or plasma levels of total TGs were associated with increased risk of colorectal adenoma [197], colonic adenoma risk [198]; the relationship seemed to be stronger for the colon than for the rectum, and in men than in women [199, 200]. However, other studies did not demonstrate a link between serum/plasma TGs and CRC risk [79, 201–203]. A meta-analysis of published studies dealing with the problem in question suffered from a considerable heterogeneity of source data, since the study populations differed markedly in their CRC risk profiles, probably due to variations in environmental factors [204]. Furthermore, little is known on specific FAs forming TGs. Serum TGs of Min mice (a mouse model of colorectal cancer) showed greater level of hydroxyperoxidation and contained elevated concentrations of TG species with 18:2 n-6 chains, especially during polyp formation [205]. Rapid evaporative ionization mass spectrometry (REIMS) imaging demonstrated that CRC tissues contained significantly less TG 54:0 than benign adenomas; however, concentration of this TG in CRC was still significantly higher than in normal tissues [206]. In another study, rectal cancer patients showed a significant increase in serum TG 56:6, 52:2 and 52:1, but it must be stressed that the study group was relatively small [89]. The authors of most studies analyzing TG levels in blood and tissues of CRC patients reported their overall concentrations but did not provide a detailed information about the content of specific FAs.

#### **Specific fatty acids changes in adipose tissue of CRC patients**

Although available data on FAs esterified in TGs are generally limited, some studies provided an insight into this lipid group, based on the analysis of adipose

tissue. The latter is the main reservoir of TGs, capable of releasing them into bloodstream, and thus, it may influence the lipid profiles of various tissues. Many studies documented a relationship between obesity and colorectal cancer risk [58, 59]. Abdominal fat deposits, which can be expressed as the waist-to-hip ratio, seem to be a predominant “measure” of colorectal adenoma risk in men and women [207]. Moreover, as outlined recently in the review articles published by Himbert [208] and Masoodi [209]; also multifaceted interactions between adipose micro-environment and tumor, especially those mediated by proinflammatory factors, raise a growing interest of researchers. Thus, adipose tissue is no longer considered a merely energy reservoir, but also a source of various signaling molecules, adipokines [210], and FAs with proinflammatory properties that can modulate immune cells [211] or activating autophagy [212]. Furthermore, adipose tissue is no longer analyzed as a single entity, but as two distinct compartments, visceral adipose tissue (VAT) and subcutaneous adipose tissue (SAT). Furthermore, studies of SAT sometimes consider additional heterogenic nature of this tissue, with two distinct layers, deep and superficial one, that differ in terms of various parameters, e.g. the intensity of lipolysis [213–216]. Surprisingly, however, only few previous studies analyzed a link between CRC occurrence or progression and the content of some specific FAs in adipose tissue, showing some significant changes of their levels [92, 213, 217, 218].

The authors of one study published in 1988 found no significant intergroup differences in the content of seven major FAs determined by means of GLC-FID in SAT and RBCs from 49 CRC patients and 49 sex- and age-matched controls [218]. Also another case-control study conducted by Giuliani et al. [92] showed no significant differences in total SFAs or MUFAs content between SAT and VAT for both controls and patient. Total SFA content in VAT and total MUFA content in SAT turned out to be higher in CRC patients than in the controls ( $p < 0.001$ ). Among specific PUFAs, CRC patients presented with higher levels of visceral 18:3 n-3 whereas lower 18:4 n-3 than the controls. Furthermore, the study showed that in CRC patients, the level of n-6 PUFA, 18:2 n-6, was significantly higher in SAT than in VAT. Finally, the total content of n-6 PUFAs (LA + GLA + DGLA + AA) in SAT was shown to be higher in healthy controls than in CRC patients.

A somehow different approach was presented by Cotte et al. [217], who analyzed subcutaneous adipose tissue FAs based on the estimated activity of the enzymes involved in their metabolism. Therein the putative marker for ELVOL5 +  $\Delta$ -6-desaturase activities estimated by 20:3 n-6 to 18:2 n-6 ratio as well as ELVOL2/5 activity (ratio of 22:4 n-6 to 20:4 n-6 and 22:5 n-3 to 20:5

**Table 1** Colorectal cancer related changes of lipid species content in various biological samples

Research material	Lipid species	Lipid fraction	Direction of change	Reference	
Cancer tissue	14:0	total lipids	↓	Mika et al. (2017) [22]	
		total lipids	↑	Qiu et al. (2014) [179]	
	16:0	total lipids	↓	Mika et al. (2017) [22]	
			↓	Li et al. (2013) [178]	
		ceramides	↑	Chen et al. (2015) [183]	
			↑	Chen et al. (2016) [184]	
		lysophosphatidylcholines	↑	Mirnezami et al. (2014) [177]	
		↑	Li et al. (2013) [178]		
		lysophosphatidic acid	↑	Li et al. (2013) [178]	
	18:0	total lipids	↑	Mika et al. (2017) [22]	
			↑	Zhang et al. (2013) [86]	
		free fatty acids	↑	Chen et al. (2015) [183]	
		total lipids	↓	Li et al. (2013) [178]	
		ceramides	↓	Chen et al. (2015) [183]	
			↓	Chen et al. (2016) [184]	
		lysophosphatidylcholines	↑	Li et al. (2013) [178]	
		lysophosphatidic acid	↑	Li et al. (2013) [178]	
		20:0	total lipids	↑	Mika et al. (2017) [22]
			ceramides	↓	Chen et al. (2015) [183]
			↓	Chen et al. (2016) [184]	
	22:0	total lipids	↑	Mika et al. (2017) [22]	
		sphingomyelin	↓	Guo et al. (2014) [175]	
	24:0	total lipids	↑	Mika et al. (2017) [22]	
		free fatty acids	↑	Chen et al. (2015) [183]	
		ceramides	↑	Chen et al. (2015) [183]	
			↑	Chen et al. (2016) [184]	
	26:0	total lipids	↑	Mika et al. (2017) [22]	
	14:1	total lipids	↓	Mika et al. (2017) [22]	
		free fatty acids	↑	Chen et al. (2015) [183]	
	16:1 n-7	total lipids	↓	Mika et al. (2017) [22]	
			↓	Zhang et al. (2013) [86]	
		total lipids	↑	Qiu et al. (2014) [179]	
	16:1 n-7	free fatty acids	↑	Chen et al. (2015) [183]	
		↑	Guo et al. (2014) [175]		
18:1 n-9	total lipids	↓	Mika et al. (2017) [22]		
		↓	Zhang et al. (2013) [86]		
18:1 n-9	free fatty acids	↑	Guo et al. (2014) [175]		
		↑	Chen et al. (2015) [183]		
18:1 n-9	lysophosphatidylcholines	↑	Mirnezami et al. (2014) [177]		
		↑	Li et al. (2013) [178]		
20:1	free fatty acids	↑	Guo et al. (2014) [175]		
		↑	Chen et al. (2015) [183]		
22:1	total lipids	↑	Mika et al. (2017) [22]		
22:1	free fatty acids	↑	Chen et al. (2015) [183]		

**Table 1** Colorectal cancer related changes of lipid species content in various biological samples (*Continued*)

Research material	Lipid species	Lipid fraction	Direction of change	Reference
	24:1	total lipids	↑	Mika et al. (2017) [22]
	24:1	free fatty acids	↑	Chen et al. (2015) [183]
	24:1	ceramides	↑	Chen et al. (2015) [183]
			↑	Chen et al. (2016) [184]
	24:1	sphingomyelin	↓	Guo et al. (2014) [175]
	26:1	total lipids	↑	Mika et al. (2017) [22]
	18:2 n-6	total lipids	↑	Zhang et al. (2013) [86]
	18:2 n-6	total lipids	↓	Yang et al. (2015) [130]
	20:2 n-6	total lipids	↑	Zhang et al. (2013) [86]
	20:2 n-6	free fatty acids	↑	Chen et al. (2015) [183]
	20:4 n-6	total lipids	↑	Mika et al. (2017) [22]
			↑	Zhang et al. (2013) [86]
	20:4 n-6	free fatty acids	↓	Guo et al. (2014) [175]
	20:4 n-6	lysophosphatidylcholines	↓	Li et al. (2013) [178]
	20:3 n-6	total lipids	↑	Zhang et al. (2013) [86]
			↑	Yang et al. (2015) [130]
	22:4 n-6	free fatty acids	↓	Guo et al. (2014) [175]
	22:4 n-6	free fatty acids	↑	Chen et al. (2015) [183]
	20:5 n-3	total lipids	↑	Mika et al. (2017) [22]
			↑	Yang et al. (2015) [130]
	20:5 n-3	free fatty acids	↑	Chen et al. (2015) [183]
	20:5 n-3	total lipids	↓	Zhang et al. (2013) [86]
	20:5 n-3	free fatty acids	↓	Guo et al. (2014) [175]
	22:6 n-3	total lipids	↑	Mika et al. (2017) [22]
			↑	Yang et al. (2015) [130]
	22:6 n-3	free fatty acids	↑	Chen et al. (2015) [183]
	22:6 n-3	total lipids	↓	Zhang et al. (2013) [86]
	22:6 n-3	lysophosphatidylcholines	↓	Li et al. (2013) [178]
	malondialdehyde		↑	Skrzydłowska et al. (2005) [154]
	4-hydroxynonenal		↑	Skrzydłowska et al. (2005) [154]
	1,2-DG-36:3		↓	Alexander et al. (2017) [206]
	Cer-d18:0/H24:0		↑	Alexander et al. (2017) [206]
	Cer-t18:0/24:0(2OH)		↑	Alexander et al. (2017) [206]
	GlcCer-30:1		↑	Alexander et al. (2017) [206]
	PA-31:0		↑	Alexander et al. (2017) [206]
	PA-34:0		↑	Alexander et al. (2017) [206]
	PA-36:2		↑	Guo et al. (2014) [175]
	PA-38:3		↓	Guo et al. (2014) [175]
	PA-40:5		↓	Guo et al. (2014) [175]
	PC-16:0/16:1		↑	Kurabe et al. (2013) [176]
	PC-16:0/18:1		↑	Mirnezami et al. (2014) [177]
	PC-32:1		↑	Shen et al. (2017) [89]
	PC-34:1		↑	Guo et al. (2014) [175]
			↑	Li et al. (2013) [178]

**Table 1** Colorectal cancer related changes of lipid species content in various biological samples (Continued)

Research material	Lipid species	Lipid fraction	Direction of change	Reference
	PC-36:1		↑	Guo et al. (2014) [175]
	PC-38:4		↓	Guo et al. (2014) [175]
	PC-38:6		↓	Guo et al. (2014) [175]
	PE-34:4		↑	Alexander et al. (2017) [206]
	PE-38:4		↓	Guo et al. (2014) [175]
	PG 38:4		↓	Alexander et al. (2017) [206]
	PG-36:1		↑	Alexander et al. (2017) [206]
	PI-38:4		↓	Guo et al. (2014) [175]
	PS-41:0		↑	Alexander et al. (2017) [206]
	PS-43:4		↓	Alexander et al. (2017) [206]
	PS-44:6		↑	Alexander et al. (2017) [206]
	PS-44:8		↑	Alexander et al. (2017) [206]
	SM-22:0		↓	Guo et al. (2014) [175]
	SM-24:1		↓	Guo et al. (2014) [175]
	TG-54:0		↓	Alexander et al. (2017) [206]
serum	14:0	total lipids	↓	Kondo et al. (2011) [85]
		total lipids	↑	Mika et al. (2017) [22]
	15:0	total lipids	↓	Kondo et al. (2011) [85]
	18:0	total lipids	↓	Mika et al. (2017) [22]
			↓	Kondo et al. (2011) [85]
	22:0	total lipids	↑	Mika et al. (2017) [22]
	24:0	total lipids	↑	Kondo et al. (2011) [85]
	26:0	total lipids	↑	Mika et al. (2017) [22]
			↑	Kondo et al. (2011) [85]
	28:0	total lipids	↑	Kondo et al. (2011) [85]
	30:0	total lipids	↑	Kondo et al. (2011) [85]
	18:1 n-9	total lipids	↑	Mika et al. (2017) [22]
	26:1	total lipids	↑	Mika et al. (2017) [22]
	18:2 n-6	total lipids	↓	Zhu et al. (2014) [134]
	18:3 n-6	total lipids	↓	Kondo et al. (2011) [85]
	18:3 n-3	total lipids	↓	Mika et al. (2017) [22]
			↓	Zhu et al. (2014) [134]
	20:5 n-3	total lipids	↓	Mika et al. (2017) [22]
	9,10-DiHOME		↓	Zhang et al. (2017) [153]
	12,13-DiHOME		↓	Zhang et al. (2017) [153]
	9-HpODE		↓	Zhang et al. (2017) [153]
	9-HODE		↓	Zhang et al. (2017) [153]
	9-KODE		↓	Zhang et al. (2017) [153]
	13-HpODE		↓	Zhang et al. (2017) [153]
	13-HODE		↓	Zhang et al. (2017) [153]
	13-KODE		↓	Zhang et al. (2017) [153]
	19-HETE		↓	Zhang et al. (2017) [153]
20-HETE		↓	Zhang et al. (2017) [153]	
12-keto-LTB4		↓	Zhang et al. (2017) [153]	

**Table 1** Colorectal cancer related changes of lipid species content in various biological samples (*Continued*)

Research material	Lipid species	Lipid fraction	Direction of change	Reference
	PGE2		↓	Zhang et al. (2017) [153]
	2-hydroxy-PGE2		↓	Zhang et al. (2017) [153]
	5-HpETE		↓	Zhang et al. (2017) [153]
	5-HETE		↓	Zhang et al. (2017) [153]
	LTD4		↑	Zhang et al. (2017) [153]
	LTE4		↑	Zhang et al. (2017) [153]
	14,15-LTE4		↑	Zhang et al. (2017) [153]
	12-keto-LTB4		↓	Zhang et al. (2017) [153]
	5S,6R-LXA4		↓	Zhang et al. (2017) [153]
	12-HETE		↓	Zhang et al. (2017) [153]
	15-HETE		↓	Zhang et al. (2017) [153]
			↓	Chen et al. (2003) [166]
	8-HETE		↓	Zhang et al. (2017) [153]
	14,15-DHET		↓	Zhang et al. (2017) [153]
	8,9-DHET		↓	Zhang et al. (2017) [153]
	5,6-DHET		↓	Zhang et al. (2017) [153]
	14,15-EET		↓	Zhang et al. (2017) [153]
	8-iso-PGF2α		↓	Zhang et al. (2017) [153]
	8-iso-PGE2		↓	Zhang et al. (2017) [153]
	2,3-dinor-8-iso-PGF2α		↑	Zhang et al. (2017) [153]
	GTA-446		↓	Ritchie et al. (2010) [168]
			↓	Hata et al. (2017) [170]
plasma	16:0	total lipids	↑	Okuno et al. (2013) [172]
		total lipids	↓	Butler et al. (2017) [87]
	18:0	total lipids	↓	Butler et al. (2017) [87]
	24:0	total lipids	↓	Okuno et al. (2013) [172]
	16:1 n-7	total lipids	↓	Butler et al. (2017) [87]
	18:1 n-9	total lipids	↓	Butler et al. (2017) [87]
	20:1	total lipids	↓	Okuno et al. (2013) [172]
	20:1	free fatty acids	↑	Shen et al. (2017) [89]
	18:2 n-6	total lipids	↓	Butler et al. (2017) [87]
	18:3 n-6	total lipids	↓	Butler et al. (2017) [87]
	20:2 n-6	free fatty acids	↑	Shen et al. (2017) [89]
	20:3 n-6	total lipids	↓	Butler et al. (2017) [87]
	20:5 n-3	total lipids	↓	Okuno et al. (2013) [172]
	22:4 n-6	free fatty acids	↑	Shen et al. (2017) [89]
	18:3 n-3	total lipids	↓	Butler et al. (2017) [87]
	Cer-d18:1/26:4		↑	Shen et al. (2017) [89]
	LPC-18:2		↓	Shen et al. (2017) [89]
	LPC-18:3		↓	Shen et al. (2017) [89]
			↓	Li et al. (2013) [178]
	PE-18:1/20:2		↓	Shen et al. (2017) [89]
	PE-18:2/18:1		↓	Shen et al. (2017) [89]
	PG-18:0/16:0		↑	Shen et al. (2017) [89]

**Table 1** Colorectal cancer related changes of lipid species content in various biological samples (*Continued*)

Research material	Lipid species	Lipid fraction	Direction of change	Reference
erythrocyte	SM-38:8		↓	Shen et al. (2017) [89]
	SM-d18:1/24:1		↑	Shen et al. (2017) [89]
	18:0	total lipids	↑	Neoptolemos et al. (1988) [218]
	20:0	total lipids	↓	Okuno et al. (2013) [172]
	18:1 n-9	total lipids	↑	Neoptolemos et al. (1988) [218]
	24:1	total lipids	↑	Okuno et al. (2013) [172]
	20:4 n-6	total lipids	↓	Neoptolemos et al. (1988) [218]
adipose tissue	20:5 n-3	total lipids	↓	Okuno et al. (2013) [172]
	16:1 n-9	total lipids	↑	Cottet et al. (2015) [217]
	20:1	total lipids	↑	Neoptolemos et al. (1988) [218]
	18:3 n-6	total lipids	↑	Giuliani et al. (2014) [92]
	20:3 n-6	total lipids	↑	Giuliani et al. (2014) [92]
			↑	Cottet et al. (2015) [217]
	22:4 n-6	total lipids	↑	Giuliani et al. (2014) [92]
			↑	Okuno et al. (2013) [172]
	18:3 n-3	total lipids	↓	Giuliani et al. (2014) [92]
			↓	Cottet et al. (2015) [217]
18:4 n-3	total lipids	↓	Giuliani et al. (2014) [92]	
22:5 n-3	total lipids	↑	Cottet et al. (2015) [217]	

*Cer* ceramide, *DG* diacylglycerol, *DHET* dihydroxyeicosatrienoic acid, *DiHOME* dihydroxyoctadecenoic acid, *EET* epoxyeicosatrienoic acid, *GlcCer* glucosylceramide, *HETE* hydroxyeicosatetraenoic acid, *HODE* hydroxyoctadecadienoic acid, *HpETE* hydroperoxyeicosatetraenoic acid, *HpODE* hydroperoxyoctadecadienoic acid, *KODE* ketoctadecadienoic acid, *LPC* lysophosphatidylcholine, *LT* leukotriene, *LX* lipoxin, *PA* phosphatidic acid, *PC* phosphatidylcholine, *PE* phosphorylethanolamine, *PG* phosphatidylglycerol, *PGE/F* prostaglandin E/F, *PI* phosphatidylinositol, *PS* phosphatidylserine, *SM* sphingomyelin, *TG* triacylglycerol

n-3) were positively associated with CRC risk. No such association with CRC risk was observed on the basis of 18:1 n-9 to 16:1 n-9 ratio.

One limitation of adipose tissue studies is the method of sample preparation, which has already been shown to influence FA concentration [219]. Furthermore, adipose tissue collection is an invasive procedure, and hence, is unlikely to be applicable to large-scale studies.

## Conclusions

Despite a decrease in mortality, CRC still remains a serious public health burden [26]. A growing number of CRCs are diagnosed in patients younger than 50 years [220, 221]. The reason for this alarming tendency is yet to be elucidated, but it may be a consequence of greater exposure to environmental factors, lesser physical activity and unfavorable dietary changes. Analysis of lipid metabolism in cancer patients may provide a better insight into metabolic disturbances that contribute to carcinogenesis. The fact that cancer cells require lipids to proliferate [20], may open new therapeutic perspectives: perhaps some specific pathways involved in the synthesis and storage of fatty acids might be targeted to prevent cancer development [24]. Furthermore, some metabolites of fatty acids are important signaling molecules involved in the maintenance of proinflammatory

and anti-inflammatory equilibrium. Probably these are proinflammatory factors which constitute a link between obesity and CRC [208]. Moreover, obesity is associated with lipidome changes [32] that may predispose to the development of some related conditions, among them cancer. Alterations of FAs, their metabolites and lipid species containing FA chains can be observed in tumor microenvironment as well (Table 1). Some of those alterations, such as accumulation of PC-16:0/16:1, may be considered as cancer biomarkers [176]. Lipid profile alterations, e.g. presence of cerotic acid [22] or a decrease in the concentration of hydroxylated, polyunsaturated ultra-long-chain fatty acids [169], can be also found in the sera of CRC patients, differentiating between early and advanced stages of this malignancy [178], or serving as a predictor of survival [179]. However, the development of clinically useful lipid biomarkers requires consistent research methodology, and previous studies were quite heterogeneous in this matter. Another drawback of previous studies is limited sample size which may hinder generalization of their results onto the whole population of CRC patients. Nevertheless, understanding of lipid alterations associated with CRC may define new directions in the diagnosis and treatment of this malignancy.

## Abbreviations

AA: Arachidonic acid; ABCA1: ATP-binding cassette sub-family A 1; ACSL1: Long chain acyl-CoA synthetase 1; AGPAT1: 1-acyl-sn-glycerol-3-phosphate acyltransferase alpha; ALA:  $\alpha$ -linolenic acid; AMPK: 5'AMP-activated protein kinase; APC: Adenomatous polyposis coli; ATGL: Adipose triacylglycerol lipase; Cer: Ceramide; CerS: Ceramidase synthase; ChA: Choline kinase  $\alpha$ ; CLA: Conjugated linoleic acid; CoA: Coenzyme A; COX: Cyclooxygenase; cPLA<sub>2</sub>: Cytosolic phospholipase A<sub>2</sub>; CRC: Colorectal cancer; CSC: Cancer stem cell; CYP450: Cytochrome p450; DGLA: Dihomo- $\gamma$ -linolenic acid; DHA: Docosahexaenoic acid; EGFR: Epidermal growth factor receptor; ELOVL: Fatty acid elongase; EMT: Epithelial-mesenchymal transition; EPA: Eicosapentaenoic acid; FA: Fatty acid; FASN: Fatty acid synthase; FFA: Free fatty acid; FIT: Fecal immunochemical test; gFOBT: Guaiac-based fecal occult blood test; GLA:  $\gamma$ -linolenic acid; Glu: Glucose; HDL: High density lipoprotein; HETE: Hydroxyeicosatetraenoic acid; HNE: 4-hydroxynonenal; hPULCFA: Hydroxylated, polyunsaturated ultra-long-chain fatty acid; isoP: Isoprostane; IkbA: Kappa-light-chain-enhancer of activated B cells inhibitor; JNK1: c-Jun N-terminal protein kinase 1; LA: Linoleic acid; Lac: Lactose; LCFA: Long-chain fatty acid; LDL: Low density lipoprotein; LOX: Lipoxygenase; LPA: Lysophosphatidic acid; LPC: Lysophosphatidylcholine; LPP: Lipid peroxidation product; LT: Leukotriene; MCFa: Medium-chain fatty acid; MDA: Malondialdehyde; MLC2: Myosin regulatory light chain 2; mTOR: Mammalian target of rapamycin; MUFA: Monounsaturated fatty acid; NEFA: Non-esterified fatty acid; NF- $\kappa$ B: Kappa-light-chain-enhancer of activated B cells; OA: Oleic acid; OXPHO: Oxidative phosphorylation; PC: Phosphatidylcholine; PE: Phosphorylethanolamine; PG: Prostaglandin; PHL: Phospholipid; PKR: Protein kinase R; PL: Polar lipid; PPAR: Peroxisome proliferator-activated receptor; PUFA: Polyunsaturated fatty acid; RBC: Red blood cell; REIMS: Rapid evaporative ionization mass spectrometry; Rho/ROCK: Rho/Rho-associated coiled-coil containing protein kinase; ROC: Receiver operating characteristic; ROS: Reactive oxygen species; S1P: Sphingosine-1-phosphate; SAT: Subcutaneous adipose tissue; SCD: Stearoyl-CoA desaturase; SCFA: Short-chain fatty acid; SFA: Saturated fatty acid; SM: Sphingomyelin; SphK: Sphingosine kinase; SPL: Sphingolipid; SPM: Specialized pro-resolving mediator; TC: Total cholesterol; TG: Triacylglycerol; TLR: Toll-like receptor; VAT: Visceral adipose tissue; VLCFA: Very long-chain fatty acid; VLDL: Very-low-density-lipoprotein; YAMC: Young adult mouse colonic

## Acknowledgements

Not applicable.

## Funding

This study was supported by the Poland National Science Centre grant no. 2016/22/E/NZ4/00665.

## Availability of data and materials

Not applicable.

## Authors' contributions

AP and AM studied the literature and prepared the manuscript; AP, JK, PS, TS and AM wrote and reviewed the manuscript. All the authors read and approved the final manuscript.

## Authors' information

AP, AM and PS are chemists  
JK is a surgeon  
TS is a biochemist

## Ethics approval and consent to participate

Not applicable.

## Consent for publication

Not applicable.

## Competing interests

The authors declare that they have no competing interests.

## Publisher's Note

Springer Nature remains neutral with regard to jurisdictional claims in published maps and institutional affiliations.

## Author details

<sup>1</sup>Department of Environmental Analysis, Faculty of Chemistry, University of Gdansk, Gdansk, Poland. <sup>2</sup>Department of Pharmaceutical Biochemistry, Faculty of Pharmacy, Medical University of Gdansk, Dębinki 1, 80-211 Gdansk, Poland. <sup>3</sup>Department of General, Endocrine and Transplant Surgery, Faculty of Medicine, Medical University of Gdansk, Gdansk, Poland.

Received: 20 September 2018 Accepted: 16 January 2019

Published online: 26 January 2019

## References

- Stephenson DJ, Hoefler LA, Chalfant CE. Lipidomics in translational research and the clinical significance of lipid-based biomarkers. *Transl Res*. 2017;189:13–29. <https://doi.org/10.1016/j.trsl.2017.06.006>.
- Hamilton SR, Rubio CA, Volgenstein B, Sobin LH, Kudo S, Fogt F, et al. Carcinoma of the colon and rectum. In: Hamilton SR, Aaltonen LA, editors. *World health organization classification of Tumours. Pathology and genetics of Tumours of the digestive system*. Lyon: IARC Press; 2000. p. 105–20.
- Strum WB. Colorectal Adenomas. *N Engl J Med*. 2016;374:1065–75. <https://doi.org/10.1056/NEJMra1513581>.
- Yamagishi H, Kuroda H, Imai Y, Hiraishi H. Molecular pathogenesis of sporadic colorectal cancers. *Chin J Cancer*. 2016;35:4. <https://doi.org/10.1186/s40880-015-0066-y>.
- Grady WM. Genetic testing for high-risk colon cancer patients. *Gastroenterology*. 2003;124:1574–94. [https://doi.org/10.1016/S0016-5085\(03\)00376-7](https://doi.org/10.1016/S0016-5085(03)00376-7).
- Cappell MS. Pathophysiology, clinical presentation, and Management of Colon Cancer. *Gastroenterol Clin N Am*. 2008;37:1–24. <https://doi.org/10.1016/j.gtc.2007.12.002>.
- Robbins DH, Itzkowitz SH. The molecular and genetic basis of colon cancer. *Med Clin North Am*. 2002;86:1467–95. [https://doi.org/10.1016/S0025-7125\(02\)00084-6](https://doi.org/10.1016/S0025-7125(02)00084-6). Accessed 22 Feb 2018.
- Tan C, Du X. KRAS mutation testing in metastatic colorectal cancer. *World J Gastroenterol*. 2012;18:5171–80. <https://doi.org/10.3748/wjg.v18i37.5171>.
- Hanahan D, Weinberg RA. Hallmarks of Cancer: the next generation. *Cell*. 2011;144:646–74. <https://doi.org/10.1016/J.CELL.2011.02.013>.
- Liu X, Jakubowski M, Hunt JL. KRAS gene mutation in colorectal Cancer is correlated with increased proliferation and spontaneous apoptosis. *Am J Clin Pathol*. 2011;135:245–52. <https://doi.org/10.1309/AJCP7FO2VAXIVSTP>.
- Georgescu CV, Săftoiu A, Georgescu CC, Ciurea R, Ciurea T. Correlations of proliferation markers, p53 expression and histological findings in colorectal carcinoma. *J Gastrointest Liver Dis*. 2007;16:133–9. <http://www.ncbi.nlm.nih.gov/pubmed/17592558>. Accessed 4 Jun 2018.
- Warburg O, Wind F, Negelein E. The metabolism of tumors in the body. *J Gen Physiol*. 1927;8:519–30. <https://doi.org/10.1085/jgp.8.6.519>. Accessed 23 Feb 2018.
- Xu XD, Shao SX, Jiang HP, Cao YW, Wang YH, Yang XC, et al. Warburg effect or reverse Warburg effect? A review of Cancer metabolism. *Oncol Res Treat*. 2015;38:117–22. <https://doi.org/10.1159/000375435>.
- Chekulayev V, Mado K, Shevchuk I, Koit A, Kaldma A, Klepinin A, et al. Metabolic remodeling in human colorectal cancer and surrounding tissues: alterations in regulation of mitochondrial respiration and metabolic fluxes. *Biochem Biophys Reports*. 2015;4:111–25. <https://doi.org/10.1016/J.BBREP.2015.08.020>.
- Satoh K, Yachida S, Sugimoto M, Oshima M, Nakagawa T, Akamoto S, et al. Global metabolic reprogramming of colorectal cancer occurs at adenoma stage and is induced by MYC. *Proc Natl Acad Sci U S A*. 2017;114:E7697–706. <https://doi.org/10.1073/pnas.1710366114>.
- Fu Y, Liu S, Yin S, Niu W, Xiong W, Tan M, et al. The reverse Warburg effect is likely to be an Achilles' heel of cancer that can be exploited for cancer therapy. *Oncotarget*. 2017;8:57813–25. <https://doi.org/10.18632/oncotarget.18175>.
- Hao Y, Samuels Y, Li Q, Krokowski D, Guan B-J, Wang C, et al. Oncogenic PIK3CA mutations reprogram glutamine metabolism in colorectal cancer. *Nat Commun*. 2016;7:11971. <https://doi.org/10.1038/ncomms11971>.
- Miyo M, Konno M, Nishida N, Sueda T, Noguchi K, Matsui H, et al. Metabolic adaptation to nutritional stress in human colorectal Cancer. *Sci Rep*. 2016;6:38415. <https://doi.org/10.1038/srep38415>.
- Huang C, Freter C. Lipid metabolism, apoptosis and Cancer therapy. *Int J Mol Sci*. 2015;16:924–49. <https://doi.org/10.3390/ijms16010924>.

20. Zaytseva YY, Harris JW, Mitov MI, Kim JT, Butterfield DA, Lee EY, et al. Increased expression of fatty acid synthase provides a survival advantage to colorectal cancer cells via upregulation of cellular respiration. *Oncotarget*. 2015;6:18891–904. <https://doi.org/10.18632/oncotarget.3783>.
21. Sánchez-Martínez R, Cruz-Gil S, García-Álvarez MS, Reglero G, Ramírez de Molina A. Complementary ACSL isoforms contribute to a non-Warburg advantageous energetic status characterizing invasive colon cancer cells. *Sci Rep*. 2017;7:11143. <https://doi.org/10.1038/s41598-017-11612-3>.
22. Mika A, Kobiela J, Czumaj A, Chmielewski M, Stepnowski P, Sledzinski T. Hyper-elongation in colorectal Cancer tissue - cerotic acid is a potential novel serum metabolic marker of colorectal malignancies. *Cell Physiol Biochem*. 2017;41:722–30.
23. Beloribi-Djefailia S, Vasseur S, Guillaumond F. Lipid metabolic reprogramming in cancer cells. *Oncogene*. 2016;5:e189. <https://doi.org/10.1038/oncsis.2015.49>.
24. Currie E, Schulze A, Zechner R, Walther TC, Farese RV Jr. Cellular fatty acid metabolism and Cancer. *Cell Metab*. 2013;18:153–61. <https://doi.org/10.1016/j.cmet.2013.05.017>.
25. Luo X, Cheng C, Tan Z, Li N, Tang M, Yang L, et al. Emerging roles of lipid metabolism in cancer metastasis. *Mol Cancer*. 2017;16:76. <https://doi.org/10.1186/s12943-017-0646-3>.
26. Siegel RL, Miller KD, Fedewa SA, Ahnen DJ, Meester RGS, Barzi A, et al. Colorectal cancer statistics, 2017. *CA Cancer J Clin*. 2017;67:177–93. <https://doi.org/10.3322/caac.21395>.
27. Thélin C, Sikka S. Epidemiology of colorectal Cancer — incidence, lifetime risk factors statistics and temporal trends. In: Ettarh R, editor. *Screening for colorectal Cancer with colonoscopy*. London: IntechOpen Limited; 2015. p 61–77. <https://www.intechopen.com/books/screening-for-colorectal-cancer-with-colonoscopy/epidemiology-of-colorectal-cancer-incidence-lifetime-risk-factors-statistics-and-temporal-trends>
28. Kahi CJ, Rex DK. Current and future trends in colorectal cancer screening. *Cancer Metastasis Rev*. 2004;23:137–44. <https://doi.org/10.1023/A:1025871231346>. Accessed 21 Jan 2018.
29. Tinmouth J, Lansdorp-Vogelaar I, Allison JE. Faecal immunochemical tests versus guaiac faecal occult blood tests: what clinicians and colorectal cancer screening programme organisers need to know. *Gut*. 2015;64:1327–37. <https://doi.org/10.1136/gutjnl-2014-308074>.
30. Schreuders EH, Ruco A, Rabeneck L, Schoen RE, Sung JY, Young GP, et al. Colorectal cancer screening: a global overview of existing programmes. *Gut*. 2015;64:1637–49. <https://doi.org/10.1136/gutjnl-2014-309086>.
31. Meikle PJ, Christopher MJ. Lipidomics is providing new insight into the metabolic syndrome and its sequelae. *Curr Opin Lipidol*. 2011;22:210–5. <https://doi.org/10.1097/MOL.0b013e3283453d8e>.
32. Mika A, Śledzinski T. Alterations of specific lipid groups in serum of obese humans: a review. *Obes Rev*. 2017;18:247–72. <https://doi.org/10.1111/obr.12475>.
33. Puri P, Baillie RA, Wiest MM, Mirshahi F, Choudhury J, Cheung O, et al. A lipidomic analysis of nonalcoholic fatty liver disease. *Hepatology*. 2007;46:1081–90. <https://doi.org/10.1002/hep.21763>.
34. Markgraf DF, Al-Hasani H, Lehr S. Lipidomics-reshaping the analysis and perception of type 2 diabetes. *Int J Mol Sci*. 2016;17:1841. <https://doi.org/10.3390/ijms17111841>.
35. Stegemann C, Pechlaner R, Willeit P, Langley SR, Mangino M, Mayr U, et al. Lipidomics profiling and risk of cardiovascular disease in the prospective population-based Bruneck study. *Circulation*. 2014;129:1821–31. <https://doi.org/10.1161/CIRCULATIONAHA.113.002500>.
36. Yamashita Y, Nishiumi S, Kono S, Takao S, Azuma T, Yoshida M. Differences in elongation of very long chain fatty acids and fatty acid metabolism between triple-negative and hormone receptor-positive breast cancer. *BMC Cancer*. 2017;17:589. <https://doi.org/10.1186/s12885-017-3554-4>.
37. Yang B, Ren X-L, Fu Y-Q, Gao J-L, Li D. Ratio of n-3/n-6 PUFAs and risk of breast cancer: a meta-analysis of 274135 adult females from 11 independent prospective studies. *BMC Cancer*. 2014;14:105. <https://doi.org/10.1186/1471-2407-14-105>.
38. Llorente A, Skotland T, Sylvänne T, Kauhanen D, Róg T, Orłowski A, et al. Molecular lipidomics of exosomes released by PC-3 prostate cancer cells. *Biochim Biophys Acta - Mol Cell Biol Lipids*. 2013;1831:1302–9. <https://doi.org/10.1016/j.bbalip.2013.04.011>.
39. Skotland T, Ekroos K, Kauhanen D, Simolin H, Seierstad T, Berge V, et al. Molecular lipid species in urinary exosomes as potential prostate cancer biomarkers. *Eur J Cancer*. 2017;70:122–32. <https://doi.org/10.1016/j.ejca.2016.10.011>.
40. Li J, Condello S, Thomes-Pepin J, Ma X, Xia Y, Hurley TD, et al. Lipid desaturation is a metabolic marker and therapeutic target of ovarian Cancer stem cells. *Cell Stem Cell*. 2017;20:303–314.e5. <https://doi.org/10.1016/j.stem.2016.11.004>.
41. Zhang Y, Liu Y, Li L, Wei J, Xiong S, Zhao Z. High resolution mass spectrometry coupled with multivariate data analysis revealing plasma lipidomic alteration in ovarian cancer in Asian women. *Talanta*. 2016;150:88–96. <https://doi.org/10.1016/j.talanta.2015.12.021>.
42. Li Z, Guan M, Lin Y, Cui X, Zhang Y, Zhao Z, et al. Aberrant lipid metabolism in hepatocellular carcinoma revealed by liver Lipidomics. *Int J Mol Sci*. 2017;18:2550. <https://doi.org/10.3390/ijms18122550>.
43. Xia S-H, Wang J, Kang JX. Decreased n –6/ n –3 fatty acid ratio reduces the invasive potential of human lung cancer cells by downregulation of cell adhesion/invasion-related genes. *Carcinogenesis*. 2005;26:779–84. <https://doi.org/10.1093/carcin/bgi019>.
44. Swierczynski J, Hebanowska A, Sledzinski T. Role of abnormal lipid metabolism in development, progression, diagnosis and therapy of pancreatic cancer. *World J Gastroenterol*. 2014;20:2279. <https://doi.org/10.3748/wjg.v20.i9.2279>.
45. Piyarathna DWB, Rajendiran TM, Putluri V, Vantaku V, Soni T, von Rundstedt F-C, et al. Distinct Lipidomic landscapes associated with clinical stages of urothelial Cancer of the bladder. *Eur Urol Focus*. 2017. <https://doi.org/10.1016/j.EUUF.2017.04.005>.
46. LIPID MAPS® Lipidomics Gateway [http://www.lipidmaps.org/data/classification/LM\\_classification\\_exp.php](http://www.lipidmaps.org/data/classification/LM_classification_exp.php). Accessed 26 Jun 2018.
47. Fahy E, Cotter D, Sud M, Subramaniam S. Lipid classification, structures and tools. *Biochim Biophys Acta - Mol Cell Biol Lipids*. 2011;1811:637–47. <https://doi.org/10.1016/j.bbalip.2011.06.009>.
48. Kimura T, Jennings W, Epanand RM. Roles of specific lipid species in the cell and their molecular mechanism. *Prog Lipid Res*. 2016;62:75–92. <https://doi.org/10.1016/j.plipres.2016.02.001>.
49. Ahmadian M, Duncan RE, Jaworski K, Sarkadi-Nagy E, Sul HS. Triacylglycerol metabolism in adipose tissue. *Future Lipidol*. 2007;2:229–37. <https://doi.org/10.2217/17460875.2.2.229>.
50. Schönfeld P, Wojtczak L. Short- and medium-chain fatty acids in energy metabolism: the cellular perspective. *J Lipid Res*. 2016;57:943–54. <https://doi.org/10.1194/jlr.R067629>.
51. Jump DB. Mammalian fatty acid elongases. *Methods Mol Biol*. 2009;579:375–89. [https://doi.org/10.1007/978-1-60761-322-0\\_19](https://doi.org/10.1007/978-1-60761-322-0_19).
52. Tosi F, Sartori F, Guarini P, Olivieri O, Martinelli N. Delta-5 and Delta-6 desaturases: crucial enzymes in polyunsaturated fatty acid-related pathways with pleiotropic influences in health and disease. In: Camps J, editor. *Oxidative stress and inflammation in non-communicable diseases - molecular mechanisms and perspectives in therapeutics*. Advances in experimental medicine and biology, vol. 824. Cham: Springer; 2014. p 61–81. [https://doi.org/10.1007/978-3-319-07320-0\\_7](https://doi.org/10.1007/978-3-319-07320-0_7).
53. Meyer BJ, Mann NJ, Lewis JL, Milligan GC, Sinclair AJ, Howe PRC. Dietary intakes and food sources of omega-6 and omega-3 polyunsaturated fatty acids. *Lipids*. 2003;38:391–8. <https://doi.org/10.1007/s11745-003-1074-0>.
54. Lands B, Bibus D, Stark KD. Dynamic interactions of n-3 and n-6 fatty acid nutrients. *Prostaglandins, Leukot Essent Fat Acids*. 2017. <https://doi.org/10.1016/j.plefa.2017.01.012>.
55. Micha R, Khatibzadeh S, Shi P, Fahimi S, Lim S, Andrews KG, et al. Global, regional, and national consumption levels of dietary fats and oils in 1990 and 2010: a systematic analysis including 266 country-specific nutrition surveys. *BMJ*. 2014;348:g2272. <https://doi.org/10.1136/BMJ.G2272>.
56. Barrera G. Oxidative stress and lipid peroxidation products in cancer progression and therapy. *ISRN Oncol*. 2012;2012:137289. <https://doi.org/10.5402/2012/137289>.
57. Ni Y, Zhao L, Yu H, Ma X, Bao Y, Rajani C, et al. Circulating unsaturated fatty acids delineate the metabolic status of obese individuals. *EBioMedicine*. 2015;2:1513–22. <https://doi.org/10.1016/j.ebiom.2015.09.004>.
58. Bardou M, Barkun AN, Martel M. Obesity and colorectal cancer. *Gut*. 2013;62:933–47. <https://doi.org/10.1136/gutjnl-2013-304701>.
59. Ma Y, Yang Y, Wang F, Zhang P, Shi C, Zou Y, et al. Obesity and risk of colorectal cancer: a systematic review of prospective studies. *PLoS One*. 2013;8:e53916. <https://doi.org/10.1371/journal.pone.0053916>.
60. Qin S, Yin J, Huang K. Free fatty acids increase intracellular lipid accumulation and oxidative stress by modulating PPARα and SREBP-1c in L-02 cells. *Lipids*. 2016;51:797–805. <https://doi.org/10.1007/s11745-016-4160-y>.



61. Lupachyk S, Watcho P, Hasanova N, Julius U, Obrosova IG. Triglyceride, nonesterified fatty acids, and prediabetic neuropathy: role for oxidative–nitrosative stress. *Free Radic Biol Med*. 2012;52:1255–63. <https://doi.org/10.1016/j.freeradbiomed.2012.01.029>.
62. Daniëls WW, Smans K, Royaux I, Chypre M, Swinnen JV, Zaidi N. Cancer cells differentially activate and thrive on de novo lipid synthesis pathways in a low-lipid environment. *PLoS One*. 2014;9:e106913. <https://doi.org/10.1371/journal.pone.0106913>.
63. Horiguchi A, Asano T, Ito K, Sumitomo M, Hayakawa M. Fatty acid synthase over expression is an Indicator of tumor aggressiveness and poor prognosis in renal cell carcinoma. *J Urol*. 2008;180:1137–40. <https://doi.org/10.1016/j.juro.2008.04.135>.
64. Stoiber K, Naglo O, Pernpeintner C, Zhang S, Koeberle A, Ulrich M, et al. Targeting de novo lipogenesis as a novel approach in anti-cancer therapy. *Br J Cancer*. 2018;118:43–51. <https://doi.org/10.1038/bjc.2017.374>.
65. Rysman E, Brusselmans K, Scheyns K, Timmermans L, Derua R, Munck S, et al. De novo lipogenesis protects cancer cells from free radicals and chemotherapeutics by promoting membrane lipid saturation. *Cancer Res*. 2010;70:8117–26. <https://doi.org/10.1158/0008-5472.CAN-09-3871>.
66. Chang L, Wu P, Senthilkumar R, Tian X, Liu H, Shen X, et al. Loss of fatty acid synthase suppresses the malignant phenotype of colorectal cancer cells by down-regulating energy metabolism and mTOR signaling pathway. *J Cancer Res Clin Oncol*. 2016;142:59–72. <https://doi.org/10.1007/s00432-015-2000-8>.
67. Francipane MG, Lagasse E. mTOR pathway in colorectal cancer: an update. *Oncotarget*. 2014;5:49–66. <https://doi.org/10.18632/oncotarget.1548>.
68. Gulhati P, Bowen KA, Liu J, Stevens PD, Rychahou PG, Chen M, et al. mTORC1 and mTORC2 regulate EMT, motility, and metastasis of colorectal cancer via RhoA and Rac1 signaling pathways. *Cancer Res*. 2011;71:3246–56. <https://doi.org/10.1158/0008-5472.CAN-10-4058>.
69. Wang H, Xi Q, Wu G. Fatty acid synthase regulates invasion and metastasis of colorectal cancer via Wnt signaling pathway. *Cancer Med*. 2016;5:1599–606. <https://doi.org/10.1002/cam4.711>.
70. Cao D, Song X, Che L, Li X, Pilo MG, Vidili G, et al. Both de novo synthesized and exogenous fatty acids support the growth of hepatocellular carcinoma cells. *Liver Int*. 2017;37:80–9. <https://doi.org/10.1111/liv.13183>.
71. Arnold M, Sierra MS, Laversanne M, Soerjomataram I, Jemal A, Bray F. Global patterns and trends in colorectal cancer incidence and mortality. *Gut*. 2017;66:683–91. <https://doi.org/10.1136/gutjnl-2015-310912>.
72. van Dijk SJ, Feskens EJ, Bos MB, Hoelen DW, Heijligenberg R, Bromhaar MG, et al. A saturated fatty acid-rich diet induces an obesity-linked proinflammatory gene expression profile in adipose tissue of subjects at risk of metabolic syndrome. *Am J Clin Nutr*. 2009;90:1656–64. <https://doi.org/10.3945/ajcn.2009.27792>.
73. Phillips CM, Kesse-Guyot E, McManus R, Hercberg S, Lairon D, Planells R, et al. High dietary saturated fat intake accentuates obesity risk associated with the fat mass and obesity–associated gene in adults. *J Nutr*. 2012;142:824–31. <https://doi.org/10.3945/jn.111.153460>.
74. Kennedy A, Martinez K, Chuang C-C, LaPoint K, McIntosh M. Saturated fatty acid-mediated inflammation and insulin resistance in adipose tissue: mechanisms of action and implications. *J Nutr*. 2009;139:1–4. <https://doi.org/10.3945/jn.108.098269>.
75. Hirabara SM, Curi R, Maechler P. Saturated fatty acid-induced insulin resistance is associated with mitochondrial dysfunction in skeletal muscle cells. *J Cell Physiol*. 2010;222:187–94. <https://doi.org/10.1002/jcp.21936>.
76. Huang S, Rutkowsky JM, Snodgrass RG, Ono-Moore KD, Schneider DA, Newman JW, et al. Saturated fatty acids activate TLR-mediated proinflammatory signaling pathways. *J Lipid Res*. 2012;53:2002–13. <https://doi.org/10.1194/jlr.D029546>.
77. Li T-T, Ogino S, Qian ZR. Toll-like receptor signaling in colorectal cancer: carcinogenesis to cancer therapy. *World J Gastroenterol*. 2014;20:17699–708. <https://doi.org/10.3748/wjg.v20.i47.17699>.
78. Mensink RP. Effects of saturated fatty acids on serum lipids and lipoproteins: a systematic review and regression analysis. Geneva; 2016. <http://apps.who.int/iris/bitstream/10665/246104/1/9789241565349-eng.pdf>. Accessed 17 Jan 2018
79. van Duijnhoven FJB, Bueno-De-Mesquita HB, Calligaro M, Jenab M, Pischon T, Jansen EHJM, et al. Blood lipid and lipoprotein concentrations and colorectal cancer risk in the European prospective investigation into Cancer and nutrition. *Gut*. 2011;60:1094–102. <https://doi.org/10.1136/gut.2010.225011>.
80. Esposito K, Chiodini P, Capuano A, Bellastella G, Maiorino MI, Rafaniello C, et al. Colorectal cancer association with metabolic syndrome and its components: a systematic review with meta-analysis. *Endocrine*. 2013;44:634–47. <https://doi.org/10.1007/s12020-013-9939-5>.
81. Passarelli MN, Newcomb PA. Blood lipid concentrations and colorectal adenomas: a systematic review and meta-analysis of colonoscopy studies in Asia, 2000–2014. *Am J Epidemiol*. 2016;183:691–700. <https://doi.org/10.1093/aje/kwv294>.
82. Yao X, Tian Z. Dyslipidemia and colorectal cancer risk: a meta-analysis of prospective studies. *Cancer Causes Control*. 2015;26:257–68. <https://doi.org/10.1007/s10552-014-0507-y>.
83. Sidahmed E, Sen A, Ren J, Patel A, Turgeon DK, Ruffin MT, et al. Colonic saturated fatty acid concentrations and expression of COX-1, but not diet, predict prostaglandin E2 in Normal human Colon tissue. *Nutr Cancer*. 2016;68:1192–201. <https://doi.org/10.1080/01635581.2016.1213866>.
84. Hodge AM, Williamson EJ, Bassett JK, MacInnis RJ, Giles GG, English DR. Dietary and biomarker estimates of fatty acids and risk of colorectal cancer. *Int J Cancer*. 2015;137:1224–34. <https://doi.org/10.1002/ijc.29479>.
85. Kondo Y, Nishiumi S, Shinohara M, Hatano N, Ikeda A, Yoshie T, et al. Serum fatty acid profiling of colorectal cancer by gas chromatography/mass spectrometry. *Biomark Med*. 2011;5:451–60. <https://doi.org/10.2217/bmm.11.41>.
86. Zhang J, Zhang L, Ye X, Chen L, Zhang L, Gao Y, et al. Characteristics of fatty acid distribution is associated with colorectal cancer prognosis. *Prostaglandins Leukot Essent Fat Acids*. 2013;88:355–60. <https://doi.org/10.1016/j.plefa.2013.02.005>.
87. Butler LM, Yuan J-M, Huang JY, Su J, Wang R, Koh W-P, et al. Plasma fatty acids and risk of colon and rectal cancers in the Singapore Chinese health study. *npj Precis Oncol*. 2017;1:38. <https://doi.org/10.1038/s41698-017-0040-z>.
88. May-Wilson S, Sud A, Law PJ, Palin K, Tuupainen S, Gylfe A, et al. Pro-inflammatory fatty acid profile and colorectal cancer risk: a Mendelian randomisation analysis. *Eur J Cancer*. 2017;84:228–38. <https://doi.org/10.1016/j.ejca.2017.07.034>.
89. Shen S, Yang L, Li L, Bai Y, Cai C, Liu H. A plasma lipidomics strategy reveals perturbed lipid metabolic pathways and potential lipid biomarkers of human colorectal cancer. *J Chromatogr B*. 2017;1068–1069:41–8. <https://doi.org/10.1016/j.jchromb.2017.10.004>.
90. Tamura K, Makino A, Hüllin-Matsuda F, Kobayashi T, Furihata M, Chung S, et al. Novel Lipogenic enzyme ELOVL7 is involved in prostate Cancer growth through saturated Long-chain fatty acid metabolism. *Cancer Res*. 2009;69:8133–40. <https://doi.org/10.1158/0008-5472.CAN-09-0775>.
91. González-Bengtsson A, Asadi A, Gao H, Dahlman-Wright K, Jacobsson A. Estrogen enhances the expression of the polyunsaturated fatty acid Elongase Elovl2 via ERα in breast Cancer cells. *PLoS One*. 2016;11:e0164241. <https://doi.org/10.1371/journal.pone.0164241>.
92. Giuliani A, Ferrara F, Scimò M, Angelico F, Olivieri L, Basso L. Adipose tissue fatty acid composition and colon cancer: a case–control study. *Eur J Nutr*. 2014;53:1029–37. <https://doi.org/10.1007/s00394-013-0605-8>.
93. Schwingshackl L, Hoffmann G. Monounsaturated fatty acids, olive oil and health status: a systematic review and meta-analysis of cohort studies. *Lipids Health Dis*. 2014;13:154. <https://doi.org/10.1186/1476-511X-13-154>.
94. Verberne L, Bach-Faig A, Buckland G, Serra-Majem L. Association between the Mediterranean diet and Cancer risk: a review of observational studies. *Nutr Cancer*. 2010;62:860–70. <https://doi.org/10.1080/01635581.2010.509834>.
95. Niso-Santano M, Malik SA, Pietrocola F, Bravo-San Pedro JM, Marino G, Cianfanelli V, et al. Unsaturated fatty acids induce non-canonical autophagy. *EMBO J*. 2015;34:1025–41. <https://doi.org/10.15252/embj.201489363>.
96. Burada F, Nicoli ER, Ciurea ME, Uscatu DC, Ioana M, Gheonea DI. Autophagy in colorectal cancer: an important switch from physiology to pathology. *World J Gastrointest Oncol*. 2015;7:271–84. <https://doi.org/10.4251/wjgo.v7.i11.271>.
97. Berger E, Nassra M, Atgji C, Plaisancié P, Gélouën A. Oleic acid uptake reveals the rescued enterocyte phenotype of Colon Cancer Caco-2 by HT29-MTX cells in co-culture mode. *Int J Mol Sci*. 2017;18:1573. <https://doi.org/10.3390/ijms18071573>.
98. Wang J, Yu L, Schmidt RE, Su C, Huang X, Gould K, et al. Characterization of HSCD5, a novel human stearyl-CoA desaturase unique to primates. *Biochem Biophys Res Commun*. 2005;332:735–42. <https://doi.org/10.1016/j.bbrc.2005.05.013>.
99. Kim S-J, Choi H, Park S-S, Chang C, Kim E. Stearyl CoA desaturase (SCD) facilitates proliferation of prostate cancer cells through enhancement of

- androgen receptor transactivation. *Mol Cells*. 2011;31:371–7. <https://doi.org/10.1007/s10059-011-0043-5>.
100. Kumar-Sinha C, Ignatowski KW, Lippman ME, Ethier SP, Chinnaiyan AM. Transcriptome analysis of HER2 reveals a molecular connection to fatty acid synthesis. *Cancer Res*. 2003;63:132–9. <http://www.ncbi.nlm.nih.gov/pubmed/12517789>. Accessed 21 Jan 2018.
  101. Presler M, Wojtczyk-Miaskowska A, Schlichtholz B, Kaluzny A, Matuszewski M, Mika A, et al. Increased expression of the gene encoding stearoyl-CoA desaturase 1 in human bladder cancer. *Mol Cell Biochem*. 2018;1–8. <https://doi.org/10.1007/s11010-018-3306-z>.
  102. Yahagi N, Shimano H, Hasegawa K, Ohashi K, Matsuzaka T, Najima Y, et al. Co-ordinate activation of lipogenic enzymes in hepatocellular carcinoma. *Eur J Cancer*. 2005;41:1316–22. <https://doi.org/10.1016/j.ijca.2004.12.037>.
  103. Vargas T, Moreno-Rubio J, Herranz J, Cejas P, Molina S, González-Vallinas M, et al. ColoLipidGene: signature of lipid metabolism-related genes to predict prognosis in stage-II colon cancer patients. *Oncotarget*. 2015;6:7348–63. <https://doi.org/10.18632/oncotarget.3130>.
  104. Byberg L, Kilander L, Warensjö Lemming E, Michaëlsson K, Vessby B. Cancer death is related to high palmitoleic acid in serum and to polymorphisms in the SCD-1 gene in healthy Swedish men. *Am J Clin Nutr*. 2014;99:551–8. <https://doi.org/10.3945/ajcn.113.065714>.
  105. Li J, Ren S, Piao H, Wang F, Yin P, Xu C, et al. Integration of lipidomics and transcriptomics unravels aberrant lipid metabolism and defines cholesteryl oleate as potential biomarker of prostate cancer. *Sci Rep*. 2016;6:20984. <https://doi.org/10.1038/srep20984>.
  106. Pisanu ME, Noto A, De Vitis C, Morrone S, Scognamiglio G, Botti G, et al. Blockade of Stearoyl-CoA-desaturase 1 activity reverts resistance to cisplatin in lung cancer stem cells. *Cancer Lett*. 2017;406:93–104. <https://doi.org/10.1016/j.canlet.2017.07.027>.
  107. Cruz-Gil S, Sanchez-Martinez R, Gomez de Cedron M, Martin-Hernandez R, Vargas T, Molina S, et al. Targeting the lipid metabolic axis ACSL/SCD in colorectal cancer progression by therapeutic miRNAs: miR-19b-1 role. *J Lipid Res*. 2018;59:14–24. <https://doi.org/10.1194/jlr.M076752>.
  108. Kim ER, Chang DK. Colorectal cancer in inflammatory bowel disease: the risk, pathogenesis, prevention and diagnosis. *World J Gastroenterol*. 2014;20:9872–81. <https://doi.org/10.3748/wjg.v20.i29.9872>.
  109. Lakatos PL, Lakatos L. Risk for colorectal cancer in ulcerative colitis: changes, causes and management strategies. *World J Gastroenterol*. 2008;14:3937–47. <https://doi.org/10.3748/WJG.14.3937>.
  110. Calder PC. Mechanisms of action of (n-3) fatty acids. *J Nutr*. 2012;142:592S–95S. <https://doi.org/10.3945/jn.111.155259>.
  111. Hassanzadeh P. Colorectal cancer and NF-κB signaling pathway. *Gastroenterol Hepatol from Bed to Bench*. 2011;4:127–32. <http://www.ncbi.nlm.nih.gov/pubmed/24834170>. Accessed 21 Dec 2017.
  112. Mullen A, Loscher CE, Roche HM. Anti-inflammatory effects of EPA and DHA are dependent upon time and dose-response elements associated with LPS stimulation in THP-1-derived macrophages. *J Nutr Biochem*. 2010;21:444–50. <https://doi.org/10.1016/j.jnutbio.2009.02.008>.
  113. Hall MN, Chavarro JE, Lee I-M, Willett WC, Ma J. A 22-year prospective study of fish, n-3 fatty acid intake, and colorectal cancer risk in men. *Cancer Epidemiol Biomark Prev*. 2008;17:1136–43. <https://doi.org/10.1158/1055-9965.EPI-07-2803>.
  114. Song M, Zhang X, Meyerhardt JA, Giovannucci EL, Ogino S, Fuchs CS, et al. Marine ω-3 polyunsaturated fatty acid intake and survival after colorectal cancer diagnosis. *Gut*. 2017;66:1790–6. <https://doi.org/10.1136/gutjnl-2016-311990>.
  115. Gerber M. Omega-3 fatty acids and cancers: a systematic update review of epidemiological studies. *Br J Nutr*. 2012;107:5228–39. <https://doi.org/10.1017/S0007114512001614>.
  116. Mocellin MC, Camargo CQ, Nunes EA, Fiates GMR, Trindade EBSM. A systematic review and meta-analysis of the n-3 polyunsaturated fatty acids effects on inflammatory markers in colorectal cancer. *Clin Nutr*. 2016;35:359–69. <https://doi.org/10.1016/j.clnu.2015.04.013>.
  117. Hamilton K, Brooks P, Holmes M, Cunningham J, Russell FD. Evaluation of the composition of omega-3 fatty acids in dietary oil supplements. *Nutr Diet*. 2010;67:182–9. <https://doi.org/10.1111/j.1747-0080.2010.01453.x>.
  118. Arterburn LM, Hall EB, Oken H. Distribution, interconversion, and dose response of n-3 fatty acids in humans. *Am J Clin Nutr*. 2006;83:1467S–76S. <https://doi.org/10.1093/ajcn/83.6.1467S>.
  119. Shaikh SR. Biophysical and biochemical mechanisms by which dietary N-3 polyunsaturated fatty acids from fish oil disrupt membrane lipid rafts. *J Nutr Biochem*. 2012;23:101–5. <https://doi.org/10.1016/j.jnutbio.2011.07.001>.
  120. Turk HF, Chapkin RS. Membrane lipid raft organization is uniquely modified by n-3 polyunsaturated fatty acids. *Prostaglandins Leukot Essent Fatty Acids*. 2013;88:43–7. <https://doi.org/10.1016/j.plefa.2012.03.008>.
  121. Bailat G, Siret C, Delamarre E, Luis J. Early adhesion induces interaction of FAK and Fyn in lipid domains and activates raft-dependent Akt signaling in SW480 colon cancer cells. *Biochim Biophys Acta - Mol Cell Res*. 2008;1783:2323–31. <https://doi.org/10.1016/j.BBAMCR.2008.08.008>.
  122. Staubach S, Hanisch F-G. Lipid rafts: signaling and sorting platforms of cells and their roles in cancer. *Expert Rev Proteomics*. 2011;8:263–77. <https://doi.org/10.1586/epr.11.2>.
  123. Turk HF, Barhoumi R, Chapkin RS. Alteration of EGFR spatiotemporal dynamics suppresses signal transduction. *PLoS One*. 2012;7:e39682. <https://doi.org/10.1371/journal.pone.0039682>.
  124. Schley PD, Brindley DN, Field CJ. (n-3) PUFA alter raft lipid composition and decrease epidermal growth factor receptor levels in lipid rafts of human breast cancer cells. *J Nutr*. 2007;137:548–53. <https://doi.org/10.1093/jn/137.3.548>. Accessed 9 Jan 2018.
  125. Pabla B, Bissonnette M, Konda VJ. Colon cancer and the epidermal growth factor receptor: current treatment paradigms, the importance of diet, and the role of chemoprevention. *World J Clin Oncol*. 2015;6:133–41. <https://doi.org/10.5306/wjco.v6.i5.133>.
  126. Xu Y, Qi J, Yang X, Wu E, Qian SY. Free radical derivatives formed from cyclooxygenase-catalyzed dihomo-γ-linolenic acid peroxidation can attenuate colon cancer cell growth and enhance 5-fluorouracil's cytotoxicity. *Redox Biol*. 2014;2:610–8. <https://doi.org/10.1016/j.redox.2014.01.022>.
  127. Patterson E, Wall R, Fitzgerald GF, Ross RP, Stanton C. Health implications of high dietary omega-6 polyunsaturated fatty acids. *J Nutr Metab*. 2012;2012:539426. <https://doi.org/10.1155/2012/539426>.
  128. Sakai M, Kakutani S, Horikawa C, Tokuda H, Kawashima H, Shibata H, et al. Arachidonic acid and cancer risk: a systematic review of observational studies. *BMC Cancer*. 2012;12:606. <https://doi.org/10.1186/1471-2407-12-606>.
  129. Williams CD, Whitley BM, Hoyo C, Grant DJ, Iraggi JD, Newman KA, et al. A high ratio of dietary n-6/n-3 polyunsaturated fatty acids is associated with increased risk of prostate cancer. *Nutr Res*. 2011;31:1–8. <https://doi.org/10.1016/j.nutres.2011.01.002>.
  130. Yang K, Li H, Dong J, Dong Y, Wang C-Z. Expression profile of polyunsaturated fatty acids in colorectal cancer. *World J Gastroenterol*. 2015;21:2405–12. <https://doi.org/10.3748/wjg.v21.i8.2405>.
  131. Marventano S, Kolacz P, Castellano S, Galvano F, Buscemi S, Mistretta A, et al. A review of recent evidence in human studies of n-3 and n-6 PUFA intake on cardiovascular disease, cancer, and depressive disorders: does the ratio really matter? *Int J Food Sci Nutr*. 2015;66:611–22. <https://doi.org/10.3109/09637486.2015.1077790>.
  132. Lee JM, Lee H, Kang S, Park WJ. Fatty acid desaturases, polyunsaturated fatty acid regulation, and biotechnological advances. *Nutrients*. 2016;8:23. <https://doi.org/10.3390/nu8010023>.
  133. Chen C, Nagana Gowda GA, Zhu J, Deng L, Gu H, Chiorean EG, et al. Altered metabolite levels and correlations in patients with colorectal cancer and polyps detected using seemingly unrelated regression analysis. *Metabolomics*. 2017;13:125. <https://doi.org/10.1007/s11306-017-1265-0>.
  134. Zhu J, Djukovic D, Deng L, Gu H, Himmati F, Chiorean EG, et al. Colorectal Cancer detection using targeted serum metabolic profiling. *J Proteome Res*. 2014;13:4120–30. <https://doi.org/10.1021/pr500494u>.
  135. Wang X, Lin H, Gu Y. Multiple roles of dihomo-γ-linolenic acid against proliferation diseases. *Lipids Health Dis*. 2012;11:25. <https://doi.org/10.1186/1476-511X-11-25>.
  136. Rainer L, Heiss CJ. Conjugated linoleic acid: health implications and effects on body composition. *J Am Diet Assoc*. 2004;104:963–8. <https://doi.org/10.1016/J.JADA.2004.03.016>.
  137. Evans NP, Misyak SA, Schmelz EM, Guri AJ, Hontecillas R, Bassaganya-Riera J. Conjugated linoleic acid ameliorates inflammation-induced colorectal cancer in mice through activation of PPARγ. *J Nutr*. 2010;140:515–21. <https://doi.org/10.3945/jn.109.115642>.
  138. Uma Maheswari Devi P, DH K, Uma Maheswari Devi P. Probiotic conjugated linoleic acid inhibits COX-2 inflammatory pathway. *J Pharm Res*. 2017;11:767–74. <http://jpr.solutions.info/files/final-file-59508c71f04fb3.23475784.pdf>. Accessed 23 Jan 2018.
  139. Yang B, Chen H, Stanton C, Ross RP, Zhang H, Chen YQ, et al. Review of the roles of conjugated linoleic acid in health and disease. *J Funct Foods*. 2015;15:314–25. <https://doi.org/10.1016/J.JFF.2015.03.050>.

140. Pierre A-S, Minville-Walz M, Fèvre C, Hichami A, Gresti J, Pichon L, et al. Trans-10, cis-12 conjugated linoleic acid induced cell death in human colon cancer cells through reactive oxygen species-mediated ER stress. *Biochim Biophys Acta - Mol Cell Biol Lipids*. 2013;1831:759–68. <https://doi.org/10.1016/J.BBALIP.2013.01.005>.
141. Faramarzi E, Mahdavi R, Mohammad-Zadeh M, Nasirimotlagh B, Sanaie S. Effect of conjugated linoleic acid supplementation on quality of life in rectal cancer patients undergoing preoperative Chemoradiotherapy. *Pakistan J Med Sci*. 2017;33:383–8. <https://doi.org/10.12669/pjms.332.11925>.
142. Mohammadzadeh M, Faramarzi E, Mahdavi R, Nasirimotlagh B, Asghari Jafarabadi M. Effect of conjugated linoleic acid supplementation on inflammatory factors and matrix metalloproteinase enzymes in rectal Cancer patients undergoing Chemoradiotherapy. *Integr Cancer Ther*. 2013;12:496–502. <https://doi.org/10.1177/1534735413485417>.
143. Rastmanesh R. An urgent need to include risk–benefit analysis in clinical trials investigating conjugated linoleic acid supplements in cancer patients. *Contemp Clin Trials*. 2011;32:69–73. <https://doi.org/10.1016/j.cct.2010.09.005>.
144. Siti HN, Kamisah Y, Kamsiah J. The role of oxidative stress, antioxidants and vascular inflammation in cardiovascular disease (a review). *Vasc Pharmacol*. 2015;71:40–56. <https://doi.org/10.1016/J.VPH.2015.03.005>.
145. Maritim AC, Sanders RA, Watkins JB. Diabetes, oxidative stress, and antioxidants: a review. *J Biochem Mol Toxicol*. 2003;17:24–38. <https://doi.org/10.1002/jbt.10058>.
146. Quiñonez-Flores CM, González-Chávez SA, Nájera DDR, Pacheco-Tena C. Oxidative stress relevance in the pathogenesis of the rheumatoid arthritis: a systematic review. *Biomed Res Int*. 2016;2016:6097417. <https://doi.org/10.1155/2016/6097417>.
147. Wang Z, Li Z, Ye Y, Xie L, Li W. Oxidative stress and liver Cancer: etiology and therapeutic targets. *Oxidative Med Cell Longev*. 2016;2016:1–10. <https://doi.org/10.1155/2016/7891574>.
148. Jezierska-Drutel A, Rosenzweig SA, Neumann CA. Role of oxidative stress and the microenvironment in breast cancer development and progression. *Adv Cancer Res*. 2013;119:107–25. <https://doi.org/10.1016/B978-0-12-407190-2.00003-4>.
149. Oh B, Figtree G, Costa D, Eade T, Hruby G, Lim S, et al. Oxidative stress in prostate cancer patients: a systematic review of case control studies. *Prostate Int*. 2016;4:71–87. <https://doi.org/10.1016/j.pri.2016.05.002>.
150. Carini F, Mazzola M, Rappa F, Jurjus A, Geagea AG, Al Kattar S, et al. Colorectal carcinogenesis: role of oxidative stress and antioxidants. *Anticancer Res*. 2017;37:4759–66. <https://doi.org/10.21873/anticancer.11882>.
151. Perše M. Oxidative stress in the pathogenesis of colorectal cancer: cause or consequence? *Biomed Res Int*. 2013;2013:725710. <https://doi.org/10.1155/2013/725710>.
152. Montuschi P, Barnes PJ, Roberts LJ. Isoprostanes: markers and mediators of oxidative stress. *FASEB J*. 2004;18:1791–800. <https://doi.org/10.1096/fj.04-2330rev>.
153. Zhang L, Chen B, Zhang J, Li J, Yang Q, Zhong Q, et al. Serum polyunsaturated fatty acid metabolites as useful tool for screening potential biomarker of colorectal cancer. *Prostaglandins Leukot Essent Fat Acids*. 2017;120:25–31. <https://doi.org/10.1016/J.PLEFA.2017.04.003>.
154. Skrzydlewska E, Sulkowski S, Koda M, Zalewski B, Kanczuga-Koda L, Sulkowska M. Lipid peroxidation and antioxidant status in colorectal cancer. *World J Gastroenterol*. 2005;11:403–6. <https://doi.org/10.3748/WJG.V11.I3.403>.
155. Zhong H, Yin H. Role of lipid peroxidation derived 4-hydroxynonenal (4-HNE) in cancer: focusing on mitochondria. *Redox Biol*. 2015;4:193–9. <https://doi.org/10.1016/J.REDOX.2014.12.011>.
156. Niedernhofer LJ, Daniels JS, Rouzer CA, Greene RE, Marnett LJ. Malondialdehyde, a product of lipid peroxidation, is mutagenic in human cells. *J Biol Chem*. 2003;278:31426–33. <https://doi.org/10.1074/jbc.M212549200>.
157. Pizzimenti S, Menegatti E, Berardi D, Toaldo C, Pettazoni P, Minelli R, et al. 4-Hydroxynonenal, a lipid peroxidation product of dietary polyunsaturated fatty acids, has anticarcinogenic properties in colon carcinoma cell lines through the inhibition of telomerase activity. *J Nutr Biochem*. 2010;21:818–26. <https://doi.org/10.1016/j.jnutbio.2009.06.005>.
158. Leslie CC. Cytosolic phospholipase A<sub>2</sub>: physiological function and role in disease. *J Lipid Res*. 2015;56:1386–402. <https://doi.org/10.1194/jlr.R057588>.
159. Dichlberger A, Schlager S, Maaninka K, Schneider WJ, Kovanen PT. Adipose triglyceride lipase regulates eicosanoid production in activated human mast cells. *J Lipid Res*. 2014;55:2471–8. <https://doi.org/10.1194/jlr.M048553>.
160. Ostermann AI, Schebb NH. Effects of omega-3 fatty acid supplementation on the pattern of oxylipins: a short review about the modulation of hydroxy-, dihydroxy-, and epoxy-fatty acids. *Food Funct*. 2017;8:2355–67. <https://doi.org/10.1039/C7FO00403F>.
161. Buczynski MW, Dumlao DS, Dennis EA. Thematic review series: proteomics. An integrated omics analysis of eicosanoid biology. *J Lipid Res*. 2009;50:1015–38. <https://doi.org/10.1194/jlr.R900004-JLR200>.
162. Gabbs M, Leng S, Devassy JG, Monirujjaman M, Aukema HM. Advances in our understanding of Oxylipins derived from dietary PUFAs. *Adv Nutr*. 2015;6:513–40. <https://doi.org/10.3945/an.114.007732>.
163. Wang D, Fu L, Sun H, Guo L, DuBois RN. Prostaglandin E2 promotes colorectal Cancer stem cell expansion and metastasis in mice. *Gastroenterology*. 2015;149:1884–1895.e4. <https://doi.org/10.1053/J.GASTRO.2015.07.064>.
164. Stadler S, Nguyen CH, Schachner H, Milovanovic D, Holzner S, Brenner S, et al. Colon cancer cell-derived 12(S)-HETE induces the retraction of cancer-associated fibroblast via MLC2, RHO/ROCK and Ca<sup>2+</sup> signalling. *Cell Mol Life Sci*. 2017;74:1907–21. <https://doi.org/10.1007/s00018-016-2441-5>.
165. Savari S, Vinnakota K, Zhang Y, Sjölander A. Cysteinyl leukotrienes and their receptors: bridging inflammation and colorectal cancer. *World J Gastroenterol*. 2014;20:968–77. <https://doi.org/10.3748/wjg.v20.i4.968>.
166. Chen GG, Xu H, Lee JFY, Subramaniam M, Leung KL, Wang SH, et al. 15-hydroxy-eicosatetraenoic acid arrests growth of colorectal cancer cells via a peroxisome proliferator-activated receptor gamma-dependent pathway. *Int J Cancer*. 2003;107:837–43. <https://doi.org/10.1002/ijc.11447>.
167. Fedirko V, McKeown-Eyssen G, Serhan CN, Barry EL, Sandler RS, Figueiredo JC, et al. Plasma lipoxin A4 and resolvin D1 are not associated with reduced adenoma risk in a randomized trial of aspirin to prevent colon adenomas. *Mol Carcinog*. 2017;56:1977–83. <https://doi.org/10.1002/mc.22629>.
168. Ritchie SA, Tonita J, Alvi R, Lehotay D, Elshoni H, Myat S, et al. Low-serum GTA-446 anti-inflammatory fatty acid levels as a new risk factor for colon cancer. *Int J Cancer*. 2013;132:355–62. <https://doi.org/10.1002/ijc.27673>.
169. Ritchie SA, Heath D, Yamazaki Y, Grimmalt B, Kavianpour A, Krenitsky K, et al. Reduction of novel circulating long-chain fatty acids in colorectal cancer patients is independent of tumor burden and correlates with age. *BMC Gastroenterol*. 2010;10:140. <https://doi.org/10.1186/1471-230X-10-140>.
170. Hata T, Takemasa I, Takahashi H, Haraguchi N, Nishimura J, Hata T, et al. Downregulation of serum metabolite GTA-446 as a novel potential marker for early detection of colorectal cancer. *Br J Cancer*. 2017;117:227–32. <https://doi.org/10.1038/bjc.2017.163>.
171. Perttula K, Edmands WMB, Grigoryan H, Cai X, Iavarone AT, Gunter MJ, et al. Evaluating ultra-long-chain fatty acids as biomarkers of colorectal Cancer risk. *Cancer Epidemiol Biomark Prev*. 2016;25:1216–23. <https://doi.org/10.1158/1055-9965.EPI-16-0204>.
172. Okuno M, Hamazaki K, Ogura T, Kitade H, Matsuura T, Yoshida R, et al. Abnormalities in fatty acids in plasma, erythrocytes and adipose tissue in Japanese patients with colorectal cancer. *In Vivo (Brooklyn)*. 2013;27:203–10. <http://www.ncbi.nlm.nih.gov/pubmed/23422479>. Accessed 27 Nov 2017.
173. Pickens CA, Lane-Elliot A, Comstock SS, Fenton JJ. Altered saturated and monounsaturated plasma phospholipid fatty acid profiles in adult males with Colon adenomas. *Cancer Epidemiol Biomark Prev*. 2016;25:498–506. <https://doi.org/10.1158/1055-9965.EPI-15-0696>.
174. Leamy AK, Egnatchik RA, Young JD. Molecular mechanisms and the role of saturated fatty acids in the progression of non-alcoholic fatty liver disease. *Prog Lipid Res*. 2013;52:165–74. <https://doi.org/10.1016/j.plipres.2012.10.004>.
175. Guo S, Wang Y, Zhou D, Li Z. Significantly increased monounsaturated lipids relative to polyunsaturated lipids in six types of cancer microenvironment are observed by mass spectrometry imaging. *Sci Rep*. 2014;4:5959. <https://doi.org/10.1038/srep05959>.
176. Kurabe N, Hayasaka T, Ogawa M, Masaki N, Ide Y, Waki M, et al. Accumulated phosphatidylcholine (16:0/16:1) in human colorectal cancer; possible involvement of LPCAT4. *Cancer Sci*. 2013;104:1295–302. <https://doi.org/10.1111/cas.12221>.
177. Mirnezami R, Spagou K, Vorkas PA, Lewis MR, Kinross J, Want E, et al. Chemical mapping of the colorectal cancer microenvironment via MALDI imaging mass spectrometry (MALDI-MSI) reveals novel cancer-associated field effects. *Mol Oncol*. 2014;8:39–49. <https://doi.org/10.1016/J.MOLONC.2013.08.010>.
178. Li F, Qin X, Chen H, Qiu L, Guo Y, Liu H, et al. Lipid profiling for early diagnosis and progression of colorectal cancer using direct-infusion electrospray ionization Fourier transform ion cyclotron resonance mass

- spectrometry. *Rapid Commun Mass Spectrom.* 2013;27:24–34. <https://doi.org/10.1002/rcm.6420>.
179. Qiu Y, Cai G, Zhou B, Li D, Zhao A, Xie G, et al. A distinct metabolic signature of human colorectal cancer with prognostic potential. *Clin Cancer Res.* 2014;20:2136–46. <https://doi.org/10.1158/1078-0432.CCR-13-1939>.
180. Mansilla F, da Costa K-A, Wang S, Kruhøffer M, Lewin TM, Ørntoft TF, et al. Lysophosphatidylcholine acyltransferase 1 (LPCAT1) overexpression in human colorectal cancer. *J Mol Med.* 2009;87:85–97. <https://doi.org/10.1007/s00109-008-0409-0>.
181. Gault CR, Obeid LM, Hannun YA. An overview of sphingolipid metabolism: from synthesis to breakdown. *Adv Exp Med Biol.* 2010;688:1–23. [https://doi.org/10.1007/978-1-4419-6741-1\\_1](https://doi.org/10.1007/978-1-4419-6741-1_1).
182. Grösch S, Schiffmann S, Geisslinger G. Chain length-specific properties of ceramides. *Prog Lipid Res.* 2012;51:50–62. <https://doi.org/10.1016/J.PLIPRES.2011.11.001>.
183. Chen L, Chen H, Li Y, Li L, Qiu Y, Ren J. Endocannabinoid and ceramide levels are altered in patients with colorectal cancer. *Oncol Rep.* 2015;34:447–54. <https://doi.org/10.3892/or.2015.3973>.
184. Chen L, Ren J, Yang L, Li Y, Fu J, Li Y, et al. Stearoyl-CoA desaturase-1 mediated cell apoptosis in colorectal cancer by promoting ceramide synthesis. *Sci Rep.* 2016;6:19665. <https://doi.org/10.1038/srep19665>.
185. Hartmann D, Lucks J, Fuchs S, Schiffmann S, Schreiber Y, Ferreiros N, et al. Long chain ceramides and very long chain ceramides have opposite effects on human breast and colon cancer cell growth. *Int J Biochem Cell Biol.* 2012;44:620–8. <https://doi.org/10.1016/J.BIOCEL.2011.12.019>.
186. Hartmann D, Wegner M-S, Wanger RA, Ferreiros N, Schreiber Y, Lucks J, et al. The equilibrium between long and very long chain ceramides is important for the fate of the cell and can be influenced by co-expression of CerS. *Int J Biochem Cell Biol.* 2013;45:1195–203. <https://doi.org/10.1016/J.BIOCEL.2013.03.012>.
187. Yabu T, Shiba H, Shibasaki Y, Nakanishi T, Imamura S, Touhata K, et al. Stress-induced ceramide generation and apoptosis via the phosphorylation and activation of nMase1 by JNK signaling. *Cell Death Differ.* 2015;22:258–73. <https://doi.org/10.1038/cdd.2014.128>.
188. Woodcock J. Sphingosine and ceramide signalling in apoptosis. *IMBMB Life.* 2006;58:462–6. <https://doi.org/10.1080/15216540600871118>.
189. Hait NC, Maiti A. The role of Sphingosine-1-phosphate and Ceramide-1-phosphate in inflammation and Cancer. *Mediat Inflamm.* 2017;2017:4806541. <https://doi.org/10.1155/2017/4806541>.
190. Kawamori T, Kaneshiro T, Okumura M, Maalouf S, Uflacker A, Bielawski J, et al. Role for sphingosine kinase 1 in colon carcinogenesis. *FASEB J.* 2008;23:405–14. <https://doi.org/10.1096/fj.08-117572>.
191. Long J, Xie Y, Yin J, Lu W, Fang S. SphK1 promotes tumor cell migration and invasion in colorectal cancer. *Tumor Biol.* 2016;37:6831–6. <https://doi.org/10.1007/s13277-015-4542-4>.
192. Kalluri R, Weinberg RA. The basics of epithelial-mesenchymal transition. *J Clin Invest.* 2009;119:1420–8. <https://doi.org/10.1172/JCI39104>.
193. Ogretmen B, Hannun YA. Biologically active sphingolipids in cancer pathogenesis and treatment. *Nat Rev Cancer.* 2004;4:604–16. <https://doi.org/10.1038/nrc1411>.
194. Jelonek K, Ros M, Pietrowska M, Wildak P. Cancer biomarkers and mass spectrometry-based analyses of phospholipids in body fluids. *Clin Lipidol.* 2013;8:137–50. <https://doi.org/10.2217/clp.12.79>.
195. Bandu R, Mok HJ, Kim KP. Phospholipids as cancer biomarkers: mass spectrometry-based analysis. *Mass Spectrom Rev.* 2016. <https://doi.org/10.1002/mas.21510>.
196. Poss J, Custodis F, Werner C, Weingartner O, Bohm M, Laufs U. Cardiovascular disease and dyslipidemia: beyond LDL. *Curr Pharm Des.* 2011;17:861–70. <https://doi.org/10.2174/138161211795428858>.
197. Yang MH, Rampal S, Sung J, Choi Y-H, Son HJ, Lee JH, et al. The Association of Serum Lipids with Colorectal Adenomas. *Am J Gastroenterol.* 2013;108:833–41. <https://doi.org/10.1038/ajg.2013.64>.
198. Kim BC, Shin A, Hong CW, Sohn DK, Han KS, Ryu KH, et al. Association of colorectal adenoma with components of metabolic syndrome. *Cancer Causes Control.* 2012;23:727–35. <https://doi.org/10.1007/s10552-012-9942-9>.
199. Borena W, Stocks T, Jonsson H, Strohmaier S, Nagel G, Børge T, et al. Serum triglycerides and cancer risk in the metabolic syndrome and cancer (me-can) collaborative study. *Cancer Causes Control.* 2011;22:291–9. <https://doi.org/10.1007/s10552-010-9697-0>.
200. Inoue M, Noda M, Kurahashi N, Iwasaki M, Sasazuki S, Iso H, et al. Impact of metabolic factors on subsequent cancer risk: results from a large-scale population-based cohort study in Japan. *Eur J Cancer Prev.* 2009;18:240–7. <https://doi.org/10.1097/cej.0b013e3283240460>.
201. Agnoli C, Griioni S, Sieri S, Sacerdote C, Vineis P, Tumino R, et al. Colorectal cancer risk and dyslipidemia: a case-cohort study nested in an Italian multicentre cohort. *Cancer Epidemiol.* 2014;38:144–51. <https://doi.org/10.1016/J.CANEP.2014.02.002>.
202. Ulmer H, Borena W, Rapp K, Klenk J, Strasak A, Diem G, et al. Serum triglyceride concentrations and cancer risk in a large cohort study in Austria. *Br J Cancer.* 2009;101:1202–6. <https://doi.org/10.1038/sj.bjc.6605264>.
203. Coppola J-A, Shrubsole MJ, Cai Q, Smalley WE, Dai Q, Ness RM, et al. Plasma lipid levels and colorectal adenoma risk. *Cancer Causes Control.* 2015;26:635–43. <https://doi.org/10.1007/s10552-015-0555-y>.
204. Davis-Yadley AH, Lipka S, Shen H, Devanney V, Swarup S, Barnowsky A, et al. Ethnic disparities in the risk of colorectal adenomas associated with lipid levels: a retrospective multiethnic study. *J Gastrointest Cancer.* 2015;46:29–35. <https://doi.org/10.1007/s12029-014-9671-2>.
205. Ikeda K, Mutoh M, Teraoka N, Nakanishi H, Wakabayashi K, Taguchi R. Increase of oxidant-related triglycerides and phosphatidylcholines in serum and small intestinal mucosa during development of intestinal polyp formation in min mice. *Cancer Sci.* 2011;102:79–87. <https://doi.org/10.1111/j.1349-7006.2010.01754.x>.
206. Alexander J, Louise Gildea B, Julia Balog B, Abigail Speller B, James McKenzie B, Laura Muirhead B, et al. A novel methodology for in vivo endoscopic phenotyping of colorectal cancer based on real-time analysis of the mucosal lipidome: a prospective observational study of the iKnife. *Surg Endosc.* 2017;31:1361–70. <https://doi.org/10.1007/s00464-016-5121-5>.
207. Nam SY, Kim BC, Han KS, Ryu KH, Park BJ, Kim HB, et al. Abdominal visceral adipose tissue predicts risk of colorectal adenoma in both sexes. *Clin Gastroenterol Hepatol.* 2010;8:443–50. <https://doi.org/10.1016/j.cgh.2010.02.001>.
208. Himbert C, Delphan M, Scherer D, Bowers LW, Hursting S, Ulrich CM. Signals from the adipose microenvironment and the obesity-Cancer link—a systematic review. *Cancer Prev Res.* 2017;10:494–506. <https://doi.org/10.1158/1940-6207.CAPR-16-0322>.
209. Masoodi M, Kuda O, Rossmesl M, Flachs P, Kopecky J. Lipid signaling in adipose tissue: connecting inflammation & metabolism. *Biochim Biophys Acta - Mol Cell Biol Lipids.* 2015;1851:503–18. <https://doi.org/10.1016/J.BBALIP.2014.09.023>.
210. Jacobi D, Stanya KJ, Lee C-H. Adipose tissue signaling by nuclear receptors in metabolic complications of obesity. *Adipocyte.* 2012;1:4–12. <https://doi.org/10.4161/adip.19036>.
211. Del Cornò M, D'Archivio M, Conti L, Scaccocchio B, Vari R, Donninelli G, et al. Visceral fat adipocytes from obese and colorectal cancer subjects exhibit distinct secretory and ω6 polyunsaturated fatty acid profiles and deliver immunosuppressive signals to innate immunity cells. *Oncotarget.* 2016;7:63093–105. <https://doi.org/10.18632/oncotarget.10998>.
212. Wen Y-A, Xing X, Harris JW, Zaytseva YY, Mitov MI, Napier DL, et al. Adipocytes activate mitochondrial fatty acid oxidation and autophagy to promote tumor growth in colon cancer. *Cell Death Dis.* 2017;8:e2593. <https://doi.org/10.1038/cddis.2017.21>.
213. Liesenfeld DB, Grapov D, Fahrman JF, Salou M, Scherer D, Toth R, et al. Metabolomics and transcriptomics identify pathway differences between visceral and subcutaneous adipose tissue in colorectal cancer patients: the ColoCare study. *Am J Clin Nutr.* 2015;102:433–43. <https://doi.org/10.3945/ajcn.114.103804>.
214. Marinou K, Hodson L, Vasan SK, Fielding BA, Banerjee R, Brismar K, et al. Structural and functional properties of deep abdominal subcutaneous adipose tissue explain its association with insulin resistance and cardiovascular risk in men. *Diabetes Care.* 2014;37:821–9. <https://doi.org/10.2337/dc13-1353>.
215. Monzon JR, Basile R, Heneghan S, Udupi V, Green A. Lipolysis in adipocytes isolated from deep and superficial subcutaneous adipose tissue. *Obes Res.* 2002;10:266–9. <https://doi.org/10.1038/oby.2002.36>.
216. Walker GE, Verti B, Marzullo P, Savia G, Mencarelli M, Zurleni F, et al. Deep subcutaneous adipose tissue: a distinct abdominal adipose depot\*. *Obesity.* 2007;15:1933–43. <https://doi.org/10.1038/oby.2007.231>.
217. Cottet V, Vaysse C, Scherrer M-L, Ortega-Deballon P, Lakkis Z, Delhorme J-B, et al. Fatty acid composition of adipose tissue and colorectal cancer: a case-control study. *Am J Clin Nutr.* 2015;101:192–201. <https://doi.org/10.3945/ajcn.114.088948>.
218. Neoptolemos JP, Clayton H, Heagerty AM, Nicholson MJ, Johnson B, Mason J, et al. Dietary fat in relation to fatty acid composition of red cells and

adipose tissue in colorectal cancer. *Br J Cancer*. 1988;58:575–9. <https://doi.org/10.1038/bjc.1988.262>.

219. Ibáñez C, Simó C, Palazoglu M, Cifuentes A. GC-MS based metabolomics of colon cancer cells using different extraction solvents. *Anal Chim Acta*. 2017; 986:48–56. <https://doi.org/10.1016/j.aca.2017.07.019>.
220. Inra JA, Syngal S. Colorectal Cancer in Young adults. *Dig Dis Sci*. 2015;60: 722–33. <https://doi.org/10.1007/s10620-014-3464-0>.
221. Sheneman DW, Finch JL, Messersmith WA, Leong S, Goodman KA, Davis SL, et al. The impact of young adult colorectal cancer: incidence and trends in Colorado. *Color Cancer*. 2017;6:49–56. <https://doi.org/10.2217/crc-2017-0008>.

**Ready to submit your research? Choose BMC and benefit from:**

- fast, convenient online submission
- thorough peer review by experienced researchers in your field
- rapid publication on acceptance
- support for research data, including large and complex data types
- gold Open Access which fosters wider collaboration and increased citations
- maximum visibility for your research: over 100M website views per year

**At BMC, research is always in progress.**

Learn more [biomedcentral.com/submissions](https://biomedcentral.com/submissions)

