

RESEARCH

Open Access



Mettl14 inhibits bladder TIC self-renewal and bladder tumorigenesis through N^6 -methyladenosine of Notch1

Chaohui Gu^{1†}, Zhiyu Wang^{1†}, Naichun Zhou¹, Guanru Li¹, Yiping Kou¹, Yang Luo¹, Yidi Wang¹, Jinjian Yang^{1*} and Fengyan Tian^{2*}

Abstract

Background: N^6 -methyladenosine (m^6A) emerges as one of the most important modification of RNA. Bladder cancer is a common cancer type in developed countries, and hundreds of thousands of bladder cancer patients die every year.

Materials and methods: There are various cells in bladder tumor bulk, and a small population cells defined as tumor initiating cells (TIC) have self-renewal and differentiation capacities. Bladder TICs drive bladder tumorigenesis and metastasis, and their activities are fine regulated. However, the role of N^6 -methyladenosine in bladder TIC self-renewal is unknown.

Results: Here, we found a decrease of N^6 -methyladenosine in bladder tumors and bladder TICs. N^6 -methyladenosine levels are related to clinical severity and outcome. Mettl14 is lowly expressed in bladder cancer and bladder TICs. Mettl14 knockout promotes the proliferation, self-renewal, metastasis and tumor initiating capacity of bladder TICs, and Mettl14 overexpression exerts an opposite role. Mettl14 and m^6A modification participate in the RNA stability of Notch1 mRNA. Notch1 m^6A modification inhibits its RNA stability. Notch1 plays an essential role in bladder tumorigenesis and bladder TIC self-renewal.

Conclusion: This work reveals a novel role of Mettl14 and N^6 -methyladenosine in bladder tumorigenesis and bladder TICs, adding new layers for bladder TIC regulation and N^6 -methyladenosine function.

Keywords: N^6 -methyladenosine, Bladder tumorigenesis, Bladder TIC, Notch1, Mettl14, Self-renewal

Introduction

Bladder cancer is a serious cancer in the world, especially in advanced countries [1]. There are many kinds of cells in bladder tumor, including bladder cancer stem cells (CSC), or tumor initiating cells (TIC) [2]. Bladder TICs, a small population of cells in bladder tumors, have self-renewal, differentiation and tumor-initiating capacities [2]. Recently, increasing markers of bladder TICs were identified, and CD44 is one of the most widely-accepted markers [3]. Compared with CD44⁻ cells, CD44⁺ cells

show enhanced self-renewal and tumor-initiating capacities. Bladder TICs escape anoikis and initiate oncospheres in FBS-free medium, but bladder non-TICs can't survive [4]. Accordingly, sphere formation assay emerges as one of the most important assays to detect bladder TIC self-renewal. Besides sphere formation, transwell invasion assay can also be used for bladder TICs because of the critical role of bladder TICs in bladder metastasis and invasion [2, 5]. Like TICs in many other tumors, bladder TICs harbor enhanced tumor-initiating capacities, which can be examined by gradient tumor initiating assay [6–8]. Highly expressing ABCG2 and other pump molecules, TICs are resistant to drug treatment [9]. Despite of the critical role of bladder TICs in bladder tumor formation, metastasis, drug resistance and recurrence, the biological characteristics of bladder TICs are largely unknown.

* Correspondence: qqjiejiexiang@163.com; fccguzh@zzu.edu.cn

[†]Chaohui Gu and Zhiyu Wang contributed equally to this work.

¹Department of Urology and Henan Institute of Urology, Zhengzhou Key Laboratory for Molecular Biology of Urological Tumor Research, The First Affiliated Hospital of Zhengzhou University, Zhengzhou, Henan 450052, People's Republic of China

²Department of Pediatrics, The First Affiliated Hospital of Zhengzhou University, Zhengzhou, Henan 450052, People's Republic of China



Like TICs in other tumors, bladder TICs are finely regulated, and the precise regulations of bladder TIC self-renewal are still largely unknown [10, 11]. *N*⁶-methyladenosine (m⁶A) is the most abundant modification of mRNA in human and mice, and is very conserved among species [12]. m⁶A modification is identified in plants, yeast, insects, virus and so on. Recently, m⁶A modification was also found on some non-coding RNAs, including tRNA, rRNA, lncRNA and snRNA [13]. m⁶A modification is reversible, which is added by methyltransferase complex and removed by m⁶A demethylases. m⁶A methyltransferase complex is comprised of METTL3, METTL4, METTL14, WTAP, VIRMA and so on [14, 15]. On the contrary, FTO and AlkBH5 induce m⁶A demethylases [16, 17]. The influence of m⁶A in RNA stability is dependent on m⁶A readers, including YTHDF1, YTHDF2, YTHDF3 and YTHDC1 [18]. m⁶A modification participates in many biological processes, including spermatogenesis and embryonic development [19–21], circadian period [22], DNA damage [23], hematopoietic stem cells [24] and tissue homeostasis [25]. As for tumor biology, m⁶A modification exerts its role in tumorigenesis, proliferation and metastasis. Mettl14 is lowly expressed in hematopoietic stem cells and liver tumor cells. m⁶A methyltransferase Mettl14 attenuates the tumorigenesis of AML [26]. Recently the inhibitory role of Mettl14 in liver tumorigenesis and metastasis was also revealed. Demethylase FTO drives tumorigenesis of acute myeloid leukemia [27]. Another demethylase, ALKBH5 also exerts an oncogenic role in glioblastoma tumorigenesis [11]. However, the roles of *N*⁶-methyladenosine and related enzymes in bladder tumorigenesis and bladder TIC self-renewal are largely unknown.

Here, we found that m⁶A modification and Mettl14 were lowly expressed in bladder tumorigenesis and bladder TICs. m⁶A level and Mettl14 expression were negatively related to the bladder cancer severity and clinical outcome. m⁶A modification and Mettl14 inhibited bladder tumorigenesis and bladder TIC self-renewal through Notch1 signaling, adding a new layer of bladder TIC regulation and m⁶A function.

Materials and methods

Reagents and samples

Anti-β-actin (cat. no. A1978) and DAPI (cat. no. 28718–90-3) were obtained from Sigma-Aldrich. Anti-m⁶A antibody was purchased from Synaptic Systems. Anti-Mettl14 (ab220030) antibody and m⁶A quantification kit (ab185912) were from Abcam. Fluorescence-conjugated secondary antibodies were obtained from Molecular Probes Life Technologies.

Primary bladder cancer samples were obtained from the Departments of Urology and Henan Institute of

Urology, The First Affiliated Hospital of Zhengzhou University with informed consent. The details for bladder tumors used in this work were: #1, early bladder cancer, 63 years old, female, tumor size, 23.1 × 17.3 × 16.2 mm, non-invasive, stage I, non-metastasis. #2, advanced bladder cancer, 72 years old, male, tumor size, 38.3 × 21.8 × 19.9 mm, invasive, stage IV, metastasis. #3, advanced bladder cancer, 69 years old, female, tumor size, 35.5 × 26.8 × 21.9 mm, invasive, stage III, non-metastasis. #4, early bladder cancer, 78 years old, male, tumor size, 29.2 × 18.9 × 17.2 mm, non-invasive, stage II, non-metastasis. #5, advanced bladder cancer, 75 years old, male, tumor size, 31.9 × 29.1 × 19.8 mm, non-invasive, stage II, non-metastasis. #6, advanced bladder cancer, 73 years old, male, tumor size, 31.3 × 28.8 × 28.1 mm, non-invasive, stage II, non-metastasis.

Primary cell isolation and culture

Primary bladder cancer cells were obtained from bladder cancer patients. For primary cell isolation, a portion of excised tumor was incubated in Hanks balanced salt solution (HBSS; Gibco) and transported quickly to the laboratory on ice. Then the samples were cut into small fragments, and digested in HBSS containing 0.1% type I collagenase, 0.05% type IV collagenase, 0.03% pronase, and 0.01% deoxyribonuclease at 37 °C for 30 min. The sample was filtered through 70-μm-nylon filter and centrifuged for 4 min at 50 × g in 4 °C. Bladder cancer primary cells were in precipitation, and cell survival & purification were examined. For bladder TIC enrichment, bladder cancer primary cells were incubated with CD44 antibody for FACS, and TICs were used for sphere formation assay, m⁶A detection and other assays.

Sphere formation

Sphere formation assay was detected to examine the self-renewal of bladder TICs. 500 CD44⁺ bladder TICs were cultured in FBS-free DMEM/F12 medium (supplemented with 1 × B27 supplement, 1 × N2 supplement, 20 ng/ml bFGF and 20 ng/ml EGF) and seeded into Corning® Costar® Ultra-Low Attachment Multiple Well Plate (cat. no. 3471, Corning). Two weeks later, sphere images were taken and sphere numbers were counted. For cell line detection, 1000 T24 cells were used for sphere formation.

CRISPR/Cas9 knockout

Mettl14 and *Notch1* knockout cells were constructed through CRISPR/Cas9 approach. For knockout, sgRNAs were designed according to online tool (<http://crispr.mit.edu/>) and cloned into lentiCRISPRv2, which were transfected into 293 T cells for lentivirus package, and the lentivirus was concentrated with PEG-it Virus Precipitation Solution (System Biosciences). Bladder cancer

primary cells were infected with lentivirus, and the transfected cells were collected by puromycin selection. Knockout efficiency was confirmed by Western blot, and then used for sphere formation assay, transwell invasion assay or other functional assays.

Immunohistochemistry

For immunohistochemistry, 5- μ m bladder cancer sections were treated with xylene (10 min \times 2), 100% alcohol (5 min \times 2), 95% alcohol (5 min), 75% alcohol (5 min), PBS (5 min), 3% H₂O₂ (20 min) and then boiled in Tris/EDTA buffer (PH 9.0) for antigen retrieval (20 min). Then the samples were incubated with anti-m⁶A (1:500 dilution in PBS) or anti-Mettl14 (1:500 dilution in PBS) antibodies for 2 h. After washing three times, HRP-conjugated secondary (1:500 dilution in PBS) and 3,3'-diaminobenzidine were used for visualization.

Dot blot

For m⁶A dot blot, RNA were extracted from bladder tumor, TICs and spheres using standard Trizol method, and then spotted onto nylon membrane. The samples were crosslink with UV treatment, and followed by m⁶A antibody incubation (1:2000 dilution in PBS, supplemented with 5% milk) and subsequent HRP-conjugated secondary antibody (1:5000 dilution in PBS, supplemented with 5% milk), finally the samples were detected with 3,3'-diaminobenzidine. For loading control, 0.02% methylene blue was used to stain the same RNA samples.

FACS

For FACS sorting or detection, samples were incubated with Phycoerythrin (PE)-conjugated CD133 (1:300 dilution in FACS buffer) or control antibodies (1:300 dilution in FACS buffer) for 30 min on ice, and then subjected to FACS. For FACS sorting, CD133⁺ bladder TICs and CD133⁻ non-TICs were enriched. For detection, FlowJo software (FlowJo v10) was used for data analyses.

Statistical methods

For bladder TIC ratio analysis, 10, 1 \times 10², 1 \times 10³, 1 \times 10⁴ and 1 \times 10⁵ cells were injected into BALB/c nude mice for three months' tumor formation. The ratios of bladder TICs were calculated by ELDA (extreme limiting dilution analysis) with online software (<http://bioinf.wehi.edu.au/software/elda/>). For most experiments, two tailed unpaired Student's t-test was used for statistical analysis.

Results

Decreased content of m⁶A modification in bladder cancer

As the most widely distributed RNA modification in mammalian cells, m⁶A modification exerts critical roles in many biological processes. However, its role in

bladder tumorigenesis and bladder TICs is unknown. In this work, we focused on the role of m⁶A modification in bladder tumorigenesis and bladder TICs, and we detected the content of m⁶A modification in bladder tumor first.

m⁶A modification was detected in non-tumor, early and advanced bladder tumors, and decreased m⁶A content was observed along with bladder tumorigenesis. Moreover, m⁶A modification was related to clinical severity (Fig. 1a). The reduction of m⁶A modification in bladder cancer was also validated by RNA dot blot (Fig. 1b), immunohistochemistry (Fig. 1c) and bladder cancer tissue array (Fig. 1d, e). As expected, lower content of m⁶A modification was also detected in advanced tumors by bladder cancer tissue array and immunohistochemistry (Fig. 1e). Moreover, m⁶A modification was also related to the clinical outcome of bladder tumor patients (Fig. 1f). Taken together, m⁶A modification content was lower in bladder tumors and related to clinical severity.

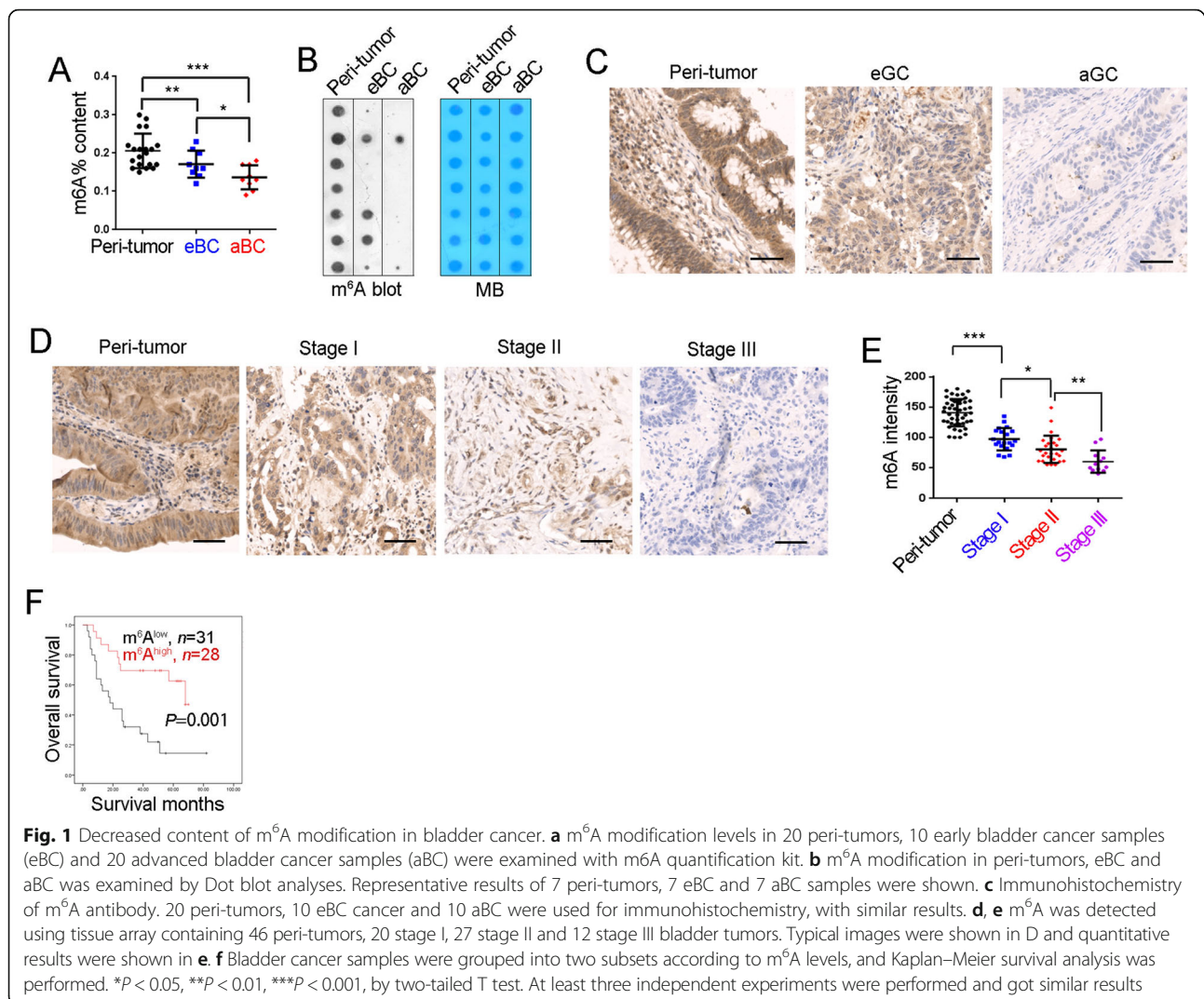
Decreased m⁶A modification in bladder TICs

To further examine m⁶A modification in bladder TICs, we enriched CD44⁺ bladder TICs and CD44⁻ non-TICs, and detected m⁶A modification. Compared with non-TICs, lower m⁶A modification levels were found in bladder TICs (Fig. 2a), which was confirmed by RNA dot blot and immunofluorescence (Fig. 2b, c).

TICs can survive in sphere formation medium and sphere formation assay emerges as a standard method to enrich bladder TICs. Accordingly, sphere formation assay was performed and spheres were collected to detect m⁶A modification. Compared with non-spheres, lower m⁶A modification levels were found in onco-spheres (Fig. 2d). RNA dot blot and immunofluorescence also confirmed the decreased content of m⁶A modification in bladder cancer spheres (Fig. 2e, f). Meanwhile, lower m⁶A modification was also observed in T24 spheres (Fig. 2g). Taken together, m⁶A modification was decreased in bladder TICs.

Mettl14 was lowly expressed in bladder TICs and accounted for m⁶A suppression

Considering the importance of methyltransferases, demethylases and m⁶A readers in m⁶A modification, we then detected the expression profiles of m⁶A-related genes. Among these genes, Mettl14 was lowly expressed in bladder cancer, especially in advanced bladder cancer samples (Fig. 3a). What's more, lower expression of Mettl14 was detected in bladder TICs and spheres (Fig. 3b). To further examine Mettl14 expression pattern, bladder cancer tissue array was performed and confirmed the lowly expression of Mettl14 in bladder cancer (Fig. 3c). Interestingly, Mettl14 was also lowly expressed



in advanced bladder tumors and related to the prognosis of bladder tumor patients (Fig. 3d, e).

To further confirm the role of *Mettl14* in m⁶A modification, we generated *Mettl14* knockout cells through CRISPR/Cas9 approach (Fig. 3f). *Mettl14* knockout led to decreased content of m⁶A modification, indicating the critical role of *Mettl14* in m⁶A modification (Fig. 3g, h). Moreover, a positive correlation of *Mettl14* expression and m⁶A content was observed in bladder tumors (Fig. 3i). What's more, in vitro RNA N⁶-adenosine methylation assay also confirmed the activity of *Mettl14* in RNA m⁶A modification (Fig. 3j). Altogether, *Mettl14* was lowly expressed in bladder cancer and accounted for the decreased content of m⁶A modification.

Mettl14 knockout drove bladder TIC self-renewal

To further explore the role of *Mettl14* in bladder tumorigenesis and bladder TICs, we utilized *Mettl14* knockout cells to perform sphere formation assay.

Mettl14 knockout cells showed increased capacity of sphere formation, indicating the inhibitory role of *Mettl14* in bladder TIC self-renewal (Fig. 4a). Moreover, *Mettl14* knockout cells contained increased bladder TICs, which confirmed the inhibitory role of *Mettl14* in bladder TIC maintenance (Fig. 4b). Cell proliferation was detected by Ki67 staining, and *Mettl14* knockout cells showed enhanced proliferation capacity (Fig. 4c). Bladder TICs account for bladder tumor invasion and metastasis, and thus tumor invasion was also detected. *Mettl14* knockout cells have enhanced invasion capacity, revealing the inhibition of *Mettl14* in bladder tumor invasion (Fig. 4d, e). We then detected tumor propagation of *Mettl14* knockout cells through in vivo tumor propagation assay. Increased tumor propagation was found in *Mettl14* knockout cells (Fig. 4f).

To further explore the role of *Mettl14* in tumor initiation, *Mettl14* knockout cells were used for tumor initiation assay in vivo. Gradient *Mettl14* knockout cells

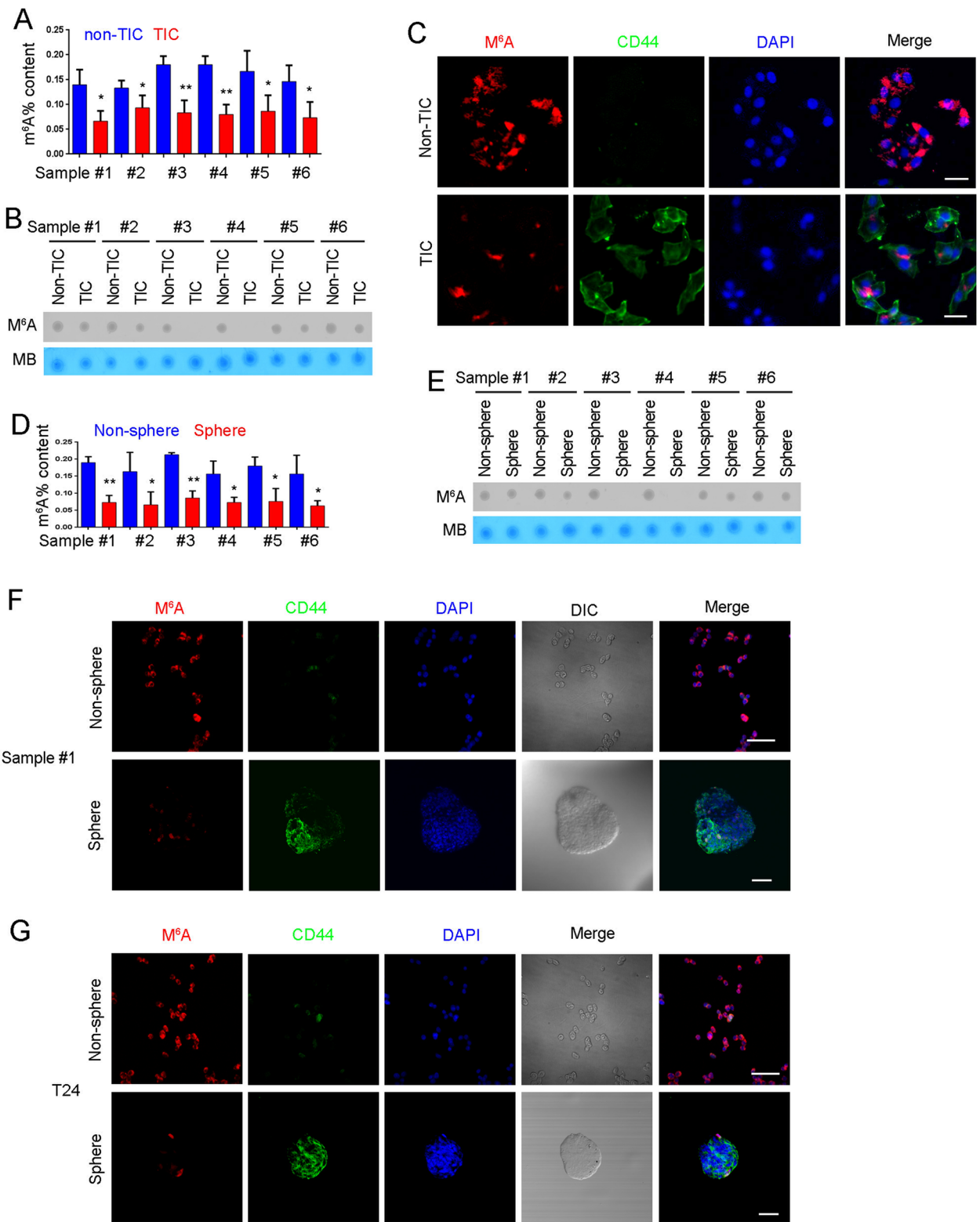


Fig. 2 (See legend on next page.)

(See figure on previous page.)

Fig. 2 m⁶A modification was reduced in bladder TICs. **a** Bladder TICs and non-TICs were sorted by FACS with CD44 antibody, and mRNA was extracted for m⁶A detection. Six bladder tumors were used for TIC enrichment and subsequent m⁶A detection. **b** m⁶A RNA dot blot in bladder TICs and non-TICs. RNA extracted from bladder TICs and non-TICs was examined for m⁶A modification. Six samples were examined and got similar results. **c** FACS enriched TICs and non-TICs were stained with m⁶A and CD44 antibodies, and visualized by confocal microscopy. **d** Sphere formation was performed, followed by m⁶A detection using spheres and non-spheres. **e** Spheres and non-spheres were generated from bladder primary cells and m⁶A modification was detected. **f, g** Oncospheres and non-spheres were enriched from bladder cancer sample (**f**) or T24 cell line (**g**), followed by immunofluorescence detection of m⁶A modification. DIC, differential interference contrast. Six samples were examined and similar results were obtained, and sample #1 results were shown. **P* < 0.05, ***P* < 0.01, ****P* < 0.001, by two-tailed T test. At least three independent experiments were performed and got similar results

were injected into BALB/c nude mice for tumor initiation. *Mettl14* deleted cells showed enhanced tumor formation ability (Fig. 4g). Consistent with tumor initiation, higher ratios of bladder TICs were also detected in *Mettl14* knockout cells (Fig. 4h). Meanwhile, *Mettl14* deleted T24 cells showed enhanced oncosphere formation capacity (Fig. 4i), enhanced invasion capacity (Fig. 4j) and tumor propagation ability (Fig. 4k). Altogether, *Mettl14* knockout promoted the self-renewal of bladder TICs.

Mettl14 overexpression inhibited TIC self-renewal

We then overexpressed *Mettl14* in bladder TICs and examined the self-renewal. *Mettl14* overexpressing cells were generated through lentivirus and confirmed by Western blot (Fig. 5a). *Mettl14* overexpression led to a decrease in sphere formation (Fig. 5b), cell proliferation (Fig. 5c) and TIC ratios (Fig. 5d). Meanwhile, *Mettl14* overexpressing cells showed impaired role in tumor invasion (Fig. 5e, f) and propagation (Fig. 5g).

Mettl14 overexpressing cells were also used for tumor-initiating assay, and impaired tumor initiation was observed (Fig. 5h). Decreased ratios of bladder TICs were also calculated through extreme limiting dilution analysis (Fig. 5i). Meanwhile, the inhibitory role of *Mettl14* in bladder cancer sphere formation, invasion and tumor propagation was also confirmed in T24 cells (Fig. 5j-l). Altogether, *Mettl14* overexpression blocked the self-renewal of bladder TICs.

Mettl14 targeted Notch1 mRNA stability in bladder TICs

Finally we explored the functional target genes in bladder TICs. We focused on the target genes of three major pathways, including Wnt/ β -catenin, Notch and Hedgehog pathways, and found *Notch1* was highly expressed in *Mettl14* knockout cells, and lowly expressed in *Mettl14* overexpressing cells (Fig. 6a). The inhibitory role of *Mettl14* in *Notch1* expression was confirmed by Western blot (Fig. 6b, c). Considering the role of m⁶A modification in mRNA stability [18, 19], we examined the stability of *Notch1* mRNA in *Mettl14* knockout cells. Interestingly, enhanced stability of *Notch1* was observed upon *Mettl14* knockout (Fig. 6d). Moreover, a

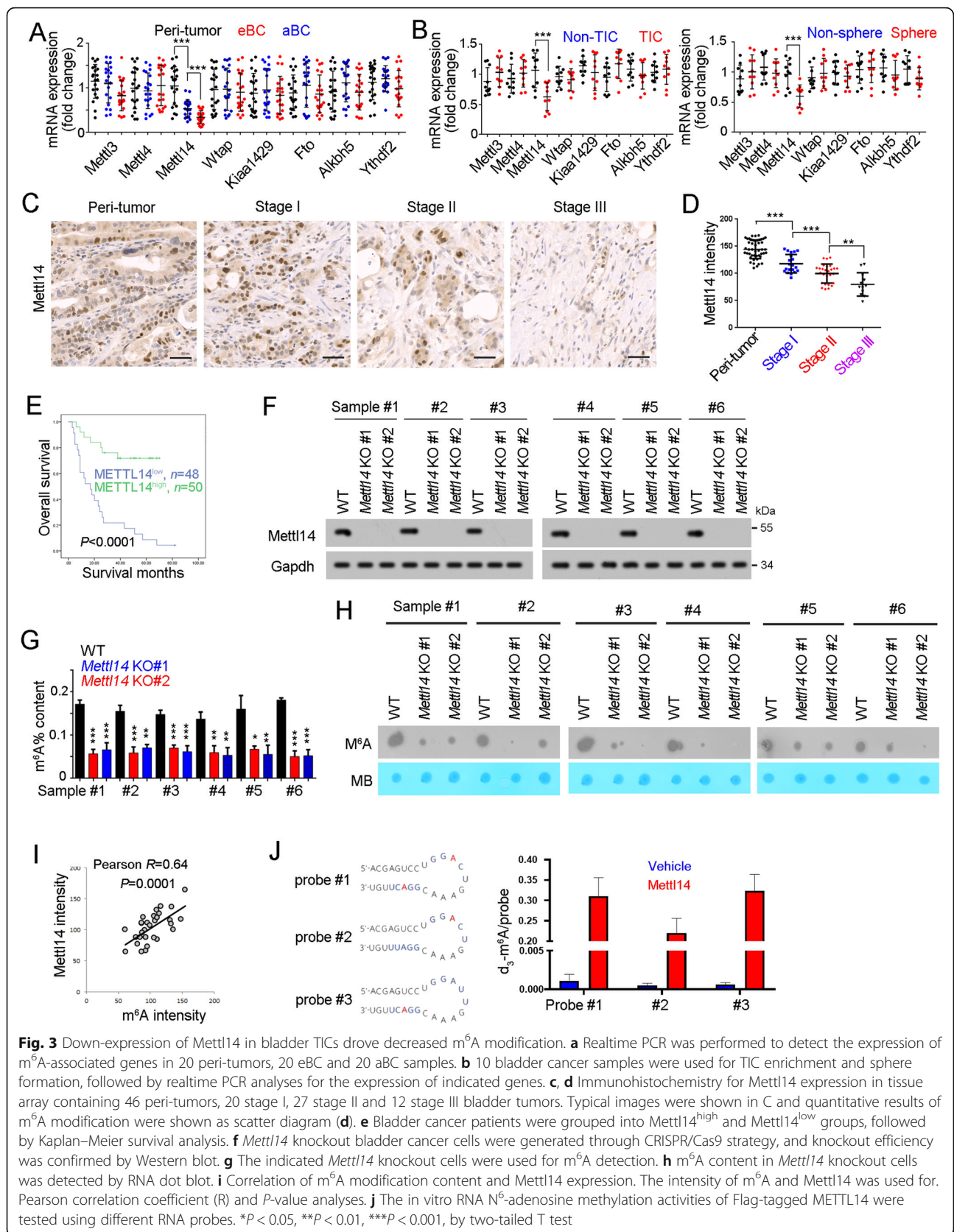
negative correlation of *Mettl14* expression and *Notch1* expression was observed in bladder tumors (Fig. 6e).

Although the role of Notch signaling in TICs is well-known, its role in bladder TICs remains elusive. To explore the role of *Notch1* in bladder TICs and *Mettl14* function, we generated *Notch1* knockout cells through CRISPR/Cas9 approach (Fig. 6f). Compared with control cells, *Notch1* knockout cells showed impaired sphere formation and invasion capacities, revealing the essential role of *Notch1* in bladder TICs (Fig. 6g-j). More importantly, in *Notch1* knockout cell, *Mettl14* knockdown showed impaired role for sphere formation and metastasis, indicating the critical role of *Notch1* in *Mettl14* function (Fig. 6g-j). The essential role of *Notch1* in *Mettl14* function was confirmed in T24 bladder cancer cell line (Fig. 6k). Altogether, *Mettl14* targeted *Notch1* that was essential for bladder TICs.

Discussion

As the most abundant modification in human mRNA, m⁶A modification participates in many physiological and pathological processes [28]. However, its role in bladder tumorigenesis and bladder TICs is unknown. In this work, we discovered the low content of m⁶A modification in bladder tumorigenesis and bladder TICs (shown in Figs. 1 and 2), and identified the role of m⁶A modification and *Mettl14* through various functional assays, including sphere formation, transwell invasion assay, gradient tumor initiation assay, tumor propagation assay and Ki67 staining (shown in Figs. 4 and 5). Our work defined *Mettl14* as a tumor suppressor gene in bladder and a negative modulator in bladder TICs (shown in Figs. 3, 4 and 5).

The self-renewal of bladder TIC is precisely regulated, and the regulation mechanism is largely unknown. Here, we revealed a novel regulatory axis of bladder TICs. *Mettl14* knockout drove the self-renewal of bladder TICs (shown in Fig. 4), and *Mettl14* overexpression inhibited bladder TIC self-renewal (shown in Fig. 5). *Mettl14* largely attenuated *Notch1* expression, and participated in bladder TICs through *Notch1* (shown in Fig. 6). *Mettl14*-m⁶A-*Notch1* pathway plays a critical role in bladder tumorigenesis and bladder TICs.



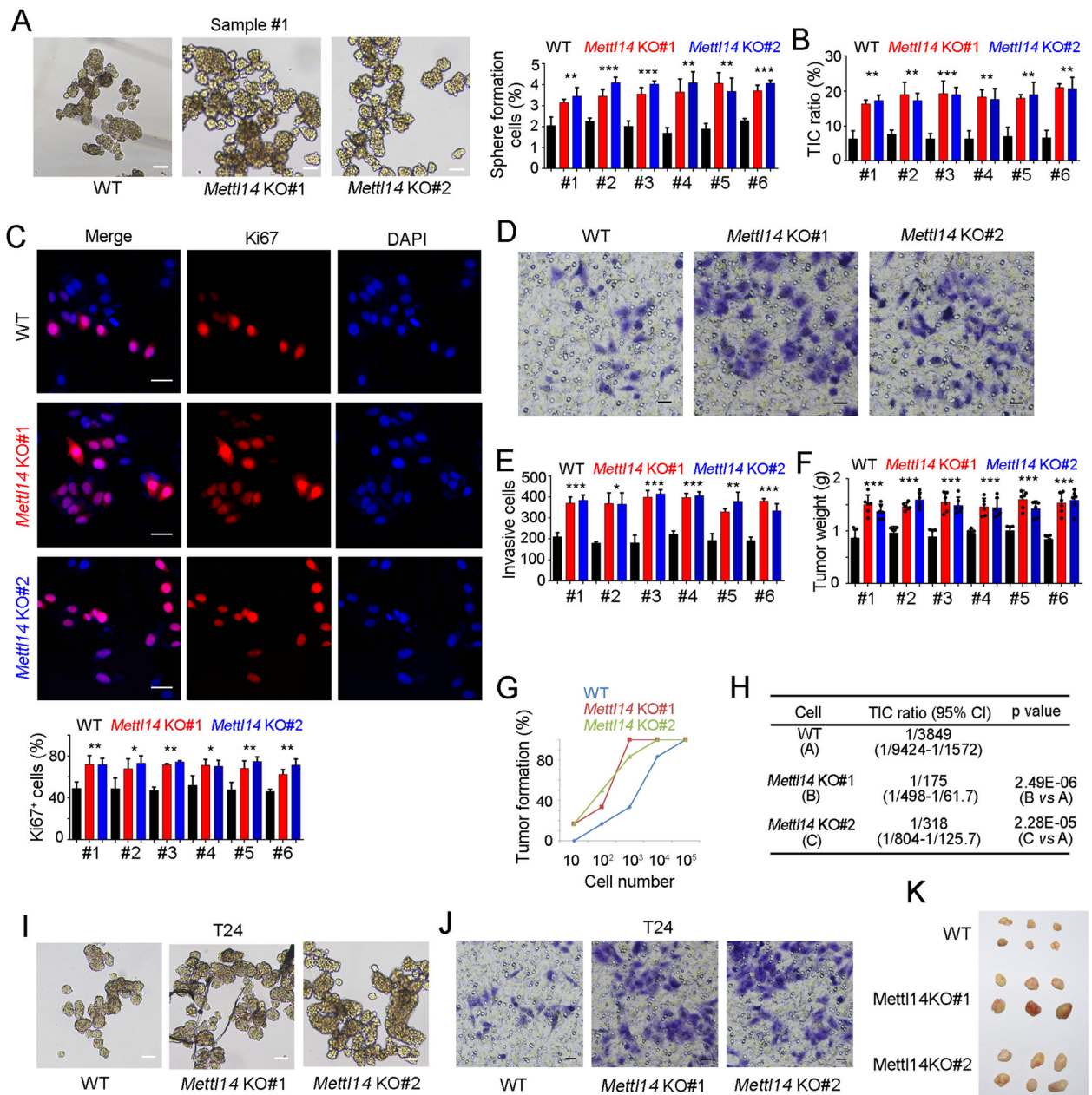
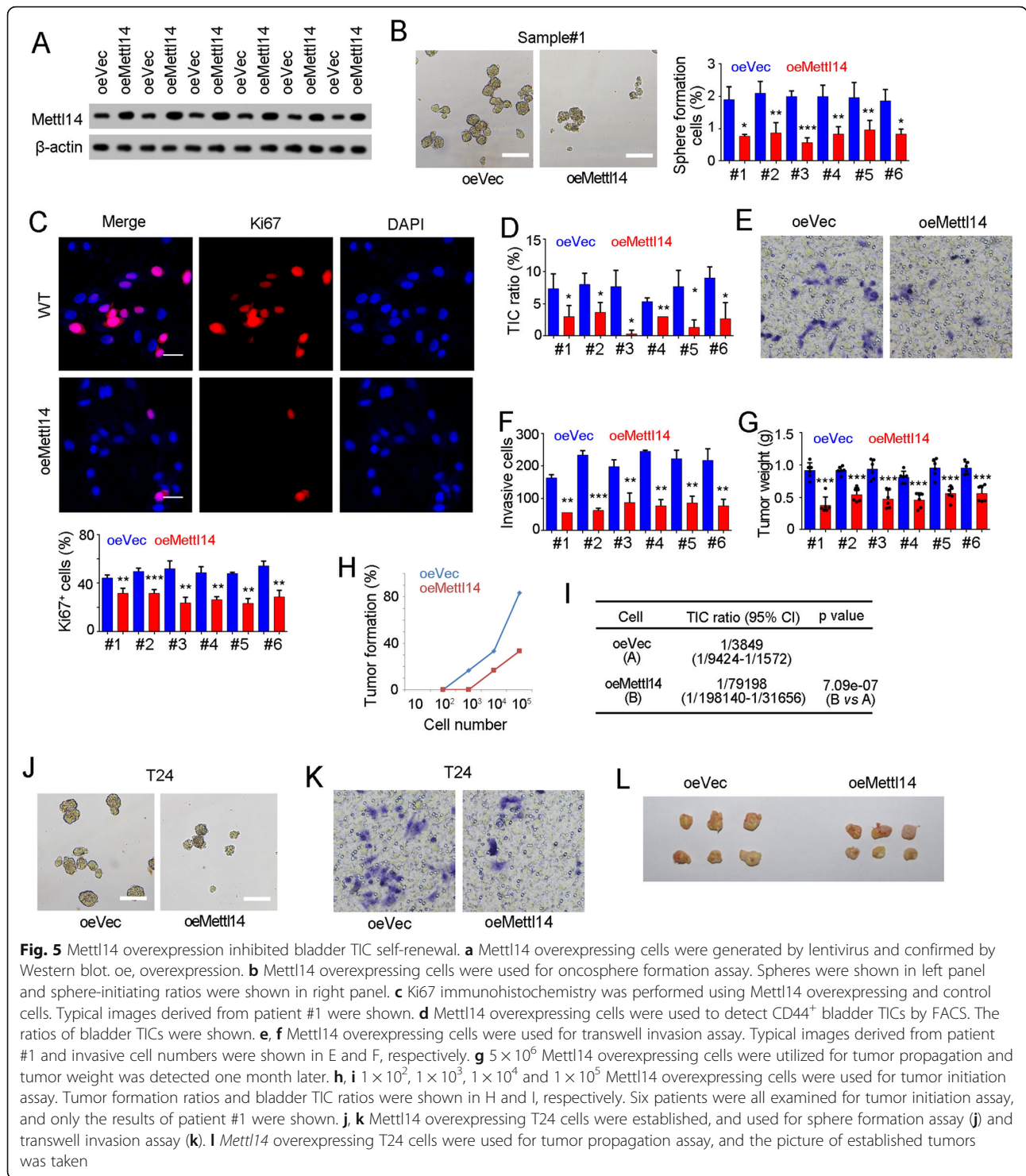


Fig. 4 Mettl14 knockout promoted bladder TIC self-renewal. **a** Mettl14 knockout cells were used for oncosphere formation. Two weeks later, typical images of spheres were taken and sphere-formation ratios were quantitated. **b** The ratios of CD44⁺ bladder TICs in Mettl14 knockout cells were analyzed by FACS. **c** Mettl14 knockout and control cells were used for Ki67 staining, and counterstained with DAPI. Typical images were shown in upper panel and Ki67⁺ cell ratios were shown in lower panel. **d, e** Mettl14 knockout and control cells were used for transwell invasion assay. 36 h later, invasive cells were stained with crystal violet for visualization. Typical images were shown in D and cell numbers were counted in **e**. **f** 5 × 10⁶ Mettl14 knockout cells were subcutaneously injected into BALB/c nude mice, and tumor weight was measured one month later. n = 6 for each sample. **g, h** 10, 1 × 10², 1 × 10³, 1 × 10⁴, and 1 × 10⁵ Mettl14 knockout and control cells were used for 3 months' tumor initiation assay. Six BALB/c nude mice were used per sample and the ratios of tumor formation mice were shown (**g**). Bladder TIC ratios were analyzed by extreme limiting dilution analysis (**h**). VS, versus. Six patients were all examined for tumor initiation assay, and only the results of patient #1 were shown. **i** Mettl14 knockout T24 cells were used for oncosphere formation, and typical images of spheres were taken two weeks later. **j** Mettl14 knockout T24 cells were used for transwell invasion assay. 36 h later, invasive cells were stained with crystal violet for visualization. **k** Mettl14 knockout T24 cells were used for tumor propagation assay, and the picture of established tumors was taken. *P < 0.05, **P < 0.01, ***P < 0.001, by two-tailed T test. At least three independent experiments were performed and got similar results



Wnt/β-catenin, Notch and Hedgehog pathways were the most important signaling pathways in TICs of various tumors [29–32]. We detected the related genes of Wnt/β-catenin, Notch and Hedgehog signaling, and identified Notch1 was a functional target gene of m⁶A modification and Mettl14 (Fig. 6a). Then we generated *Notch1*

knockout cell and re-evaluated the role of Mettl14. Impaired Mettl14 role was found upon *Notch1* knockout, indicating Mettl14 mainly target Notch1 to inhibit bladder TIC (Fig. 6). As a common enzyme, there must be many target genes of Mettl14, but here we defined Notch1 was the functional target gene through loss of function assay.

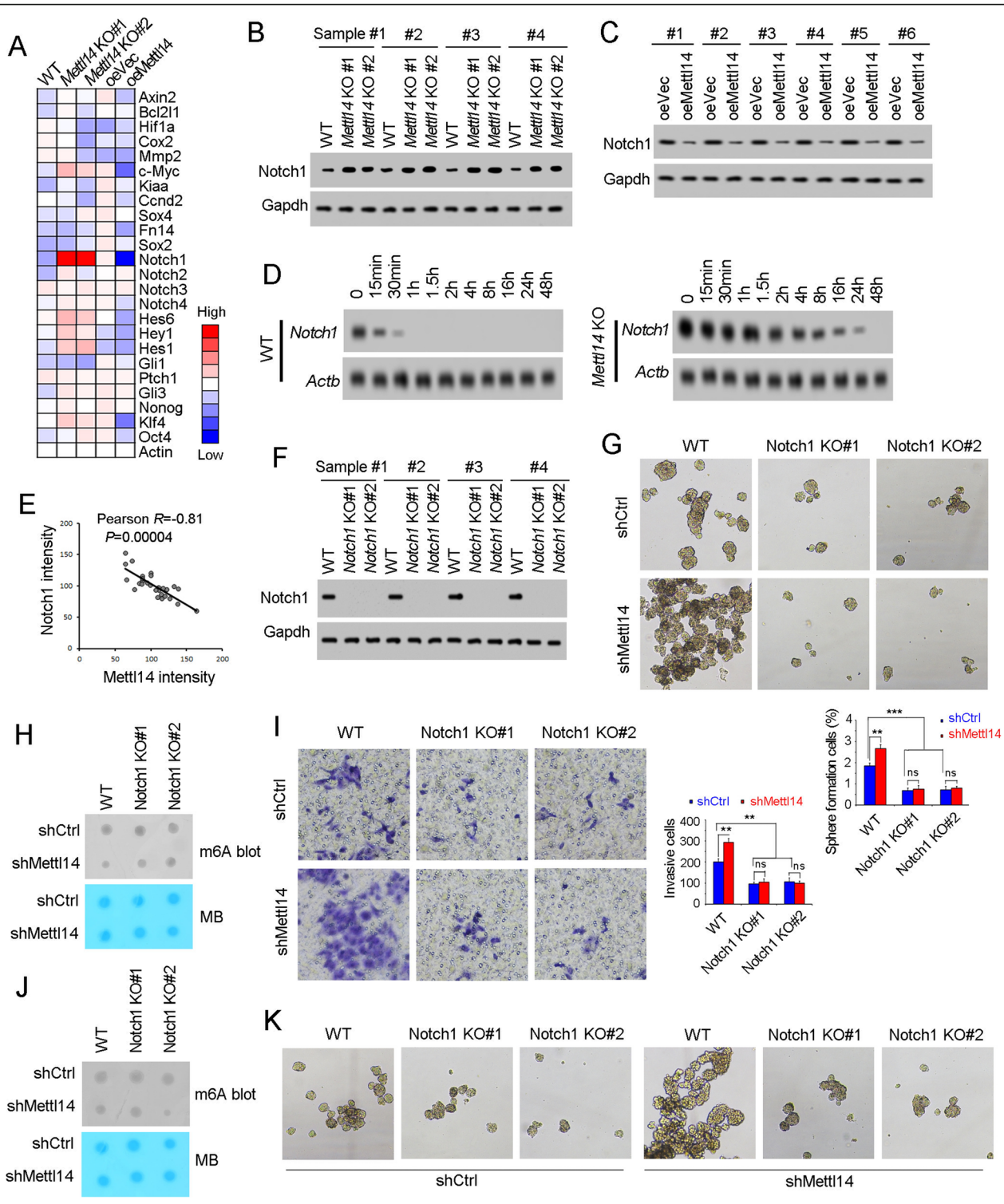


Fig. 6 (See legend on next page.)

(See figure on previous page.)

Fig. 6 Mettl14 and m⁶A modification inhibited the stability of Notch1. **a** The related genes of Wnt/ β -catenin, Notch and Hedgehog signaling were analyzed in *Mettl14* knockout cells and *Mettl14* overexpressing cells, and the expression was shown as heatmap. **b, c** Notch1 expression levels in *Mettl14* knockout cells (**b**) and *Mettl14* overexpressing cells (**c**) were examined by Western blot. Gapdh served as a loading control. **d** *Mettl14* knockout cells were treated with 2 μ g/mL actinomycin D, and then Notch1 mRNA levels at the indicated time points were examined by Northern blot. Actb was a loading control. **e** Correlation of Notch1 and *Mettl14* expression. The expression levels of Notch1 and *Mettl14* were used for analysis. Pearson correlation coefficient (R) and *P*-value were calculated. **f** *Notch1* knockout cells were generated through CRISPR/Cas9 approach and examined by Western blot. **g, h** Sphere formation of *Notch1* knockout cells. For G, typical images were shown in upper panels and calculated numbers were shown in lower panels. For H, spheres were detected for m⁶A levels, confirming the decreased m⁶A levels upon *Mettl14* knockdown. **i, j** Sphere formation of *Notch1* knockout cells. For I, typical images were shown in left panels and calculated numbers were shown in right panels. For J, invasive cells were detected for m⁶A levels, confirming the decreased m⁶A levels upon *Mettl14* knockdown. **k** *Mettl14* was silenced in *Notch1* knockout T24 cells, followed by sphere formation assay. ****P* < 0.001; ns, not significant, by two-tailed T test. At least three independent experiments were performed and got similar results

We think some other target genes may also involve in other biological processes, but in bladder tumorigenesis and bladder TIC self-renewal, *Mettl14* exerted its role mainly through Notch1-dependent manner.

TICs were regulated by various signaling pathways, including Wnt/ β -catenin, Notch and Hedgehog pathways. Increasing works revealed the critical role of Wnt/ β -catenin and Hedgehog pathway in bladder tumorigenesis and bladder TIC self-renewal. However, the role of Notch signaling in bladder tumorigenesis and TICs remains elusive. Here we generated *Notch1* knockout cells and revealed an impaired activity of bladder TICs (shown in Fig. 6). Our work defined the oncogenic role of Notch1 in bladder cancer.

The mRNA modification is a complicated process, with various modifications for various RNA molecules. Besides m⁶A, N¹-methyladenosine, m⁵C and pseudouridine also emerge as critical modulators in various biological processes [33, 34]. m⁶A modification has been identified on mRNA and some non-coding RNA, including microRNA, lncRNA and snoRNA [35]. Increasing evidences reveal that lncRNA emerges as critical modulators in the self-renewal of many kinds of TICs [36–38]. The role of m⁶A and other modifications in non-coding RNAs also need to be further investigated.

Conclusion

Bladder TICs drive bladder tumorigenesis and metastasis, and their regulation remains largely unknown. Here we revealed the role of N⁶-methyladenosine in bladder TIC self-renewal, adding new layers of bladder TIC regulation and N⁶-methyladenosine function. As a novel modulator of TICs, *Mettl14*-N⁶-methyladenosine-Notch1 pathway may be a potential target for bladder TIC elimination.

Abbreviations

CSC: Cancer stem cells; m⁶A: N⁶-methyladenosine; TIC: Tumor initiating cells

Acknowledgments

Not Applicable.

Precis for use in the table of contents

This work reveals a novel role of *Mettl14* and N⁶-methyladenosine in bladder tumorigenesis and bladder TICs, adding new layers for bladder TIC regulation and N⁶-methyladenosine function.

Authors' contributions

CG, performed experiments, analyzed data and wrote the paper; ZW, NZ, GL, YK, YL, and YW, performed some experiments; JY, and FT, initiated the study, designed experiments and wrote the paper. All authors read and approved the final manuscript.

Funding

This work was supported by the National Natural Science Foundation of China (NO. 81100464, 81200883 and 81570685); the National Natural Science Foundation of Henan (NO.2018061); the Medical Key Technologies R & D Program of Henan (201702031, 201702015); the Key Scientific Research Foundation of the Higher Education of Henan Province (No. 20A320032, 20A320044).

Availability of data and materials

All data and materials can be provided upon request.

Ethics approval and consent to participate

Primary bladder cancer samples were from the the First Affiliated Hospital of Zhengzhou University with informed consent.

Consent for publication

The authors agree for publication.

Competing interests

The authors declare that they have no competing interests.

Received: 29 March 2019 Accepted: 4 October 2019

Published online: 25 November 2019

References

1. Antoni S, Ferlay J, Soerjomataram I, Znaor A, Jemal A, Bray F. Bladder Cancer incidence and mortality: a global overview and recent trends. *Eur Urol*. 2017;71:96–108.
2. Chan KS, Volkmer JP, Weissman I. Cancer stem cells in bladder cancer: a revisited and evolving concept. *Curr Opin Urol*. 2010;20:393–7.
3. Yang YM, Chang JW. Bladder cancer initiating cells (BCICs) are among EMA(-)CD44v6(+) subset: novel methods for isolating undetermined cancer stem (initiating) cells. *Cancer Investig*. 2008;26:725–33.
4. Li C, Wu S, Wang H, Bi X, Yang Z, Du Y, He L, Cai Z, Wang J, Fan Z. The C228T mutation of TERT promoter frequently occurs in bladder cancer stem cells and contributes to tumorigenesis of bladder cancer. *Oncotarget*. 2015; 6:19542–51.
5. Zhu D, Wan X, Huang H, Chen X, Liang W, Zhao F, Lin T, Han J, Xie W. Knockdown of Bmi1 inhibits the stemness properties and tumorigenicity of human bladder cancer stem cell-like side population cells. *Oncol Rep*. 2014; 31:727–36.
6. Chan KS, Espinosa I, Chao M, Wong D, Ailles L, Diehn M, Gill H, Presti J Jr, Chang HY, van de Rijn M, et al. Identification, molecular characterization,

- clinical prognosis, and therapeutic targeting of human bladder tumor-initiating cells. *Proc Natl Acad Sci U S A*. 2009;106:14016–21.
7. Zhu P, Wang Y, Du Y, He L, Huang G, Zhang G, Yan X, Fan Z. C8orf4 negatively regulates self-renewal of liver cancer stem cells via suppression of NOTCH2 signalling. *Nat Commun*. 2015;6:7122.
 8. Zhu P, Wang Y, He L, Huang G, Du Y, Zhang G, Yan X, Xia P, Ye B, Wang S, et al. ZIC2-dependent OCT4 activation drives self-renewal of human liver cancer stem cells. *J Clin Invest*. 2015;125:3795–808.
 9. Chen ZZ, Zhu PP, Zhang YS, Liu YT, He YL, Zhang LF, Gao YF. Enhanced sensitivity of Cancer stem cells to chemotherapy using functionalized Mesoporous silica nanoparticles. *Mol Pharm*. 2016;13:2749–59.
 10. Zhu PP, Fan ZS. Cancer stem cell niches and targeted interventions. *Prog Biochem Biophys*. 2017;44:697–708.
 11. McConkey DJ, Lee S, Choi W, Tran M, Majewski T, Lee S, Siefker-Radtke A, Dinney C, Czerniak B. Molecular genetics of bladder cancer: emerging mechanisms of tumor initiation and progression. *Urol Oncol Semin Orig Investig*. 2010;28:429–40.
 12. Yue YN, Liu JZ, He C. RNA N6-methyladenosine methylation in post-transcriptional gene expression regulation. *Genes Dev*. 2015;29:1343–55.
 13. Liu N, Parisien M, Dai Q, Zheng GQ, He C, Pan T. Probing N6-methyladenosine RNA modification status at single nucleotide resolution in mRNA and long noncoding RNA. *RNA*. 2013;19:1848–56.
 14. Ping XL, Sun BF, Wang L, Xiao W, Yang X, Wang WJ, Adhikari S, Shi Y, Lv Y, Chen YS, et al. Mammalian WTAP is a regulatory subunit of the RNA N6-methyladenosine methyltransferase. *Cell Res*. 2014;24:177–89.
 15. Wang P, Doxtader KA, Nam Y. Structural basis for cooperative function of Mettl3 and Mettl14 Methyltransferases. *Mol Cell*. 2016;63:306–17.
 16. Jia GF, Fu Y, Zhao X, Dai Q, Zheng GQ, Yang Y, Yi CQ, Lindahl T, Pan T, Yang YG, He C. N6-Methyladenosine in nuclear RNA is a major substrate of the obesity-associated FTO. *Nat Chem Biol*. 2011;7:885–7.
 17. Xu C, Liu K, Tempel W, Demetriades M, Aik W, Schofield CJ, Min JR. Structures of human ALKBH5 Demethylase reveal a unique binding mode for specific single-stranded N6-Methyladenosine RNA Demethylation. *J Biol Chem*. 2014;289:17299–311.
 18. Wang Y, Li Y, Toth JJ, Petroski MD, Zhang ZL, Zhao JC. N6-methyladenosine modification destabilizes developmental regulators in embryonic stem cells. *Nat Cell Biol*. 2014;16:191–8.
 19. Zhao BS, Wang X, Beadell AV, Lu Z, Shi H, Kuuspalu A, Ho RK, He C. m(6) A-dependent maternal mRNA clearance facilitates zebrafish maternal-to-zygotic transition. *Nature*. 2017;542:475–8.
 20. Lin Z, Hsu PJ, Xing X, Fang J, Lu Z, Zou Q, Zhang KJ, Zhang X, Zhou Y, Zhang T, et al. Mettl3-/Mettl14-mediated mRNA N(6)-methyladenosine modulates murine spermatogenesis. *Cell Res*. 2017;27:1216–30.
 21. Wen J, Lv R, Ma H, Shen H, He C, Wang J, Jiao F, Liu H, Yang P, Tan L, et al. Zc3h13 regulates nuclear RNA m(6) a methylation and mouse embryonic stem cell self-renewal. *Mol Cell*. 2018;69:1028–38 e1026.
 22. Fustin JM, Doi M, Yamaguchi Y, Hida H, Nishimura S, Yoshida M, Isagawa T, Morioka MS, Kakeya H, Manabe I, Okamura H. RNA-methylation-dependent RNA processing controls the speed of the circadian clock. *Cell*. 2013;155:793–806.
 23. Xiang Y, Laurent B, Hsu CH, Nachtergaele S, Lu Z, Sheng W, Xu C, Chen H, Ouyang J, Wang S, et al. RNA m(6) a methylation regulates the ultraviolet-induced DNA damage response. *Nature*. 2017;543:573–6.
 24. Zhang C, Chen Y, Sun B, Wang L, Yang Y, Ma D, Lv J, Heng J, Ding Y, Xue Y, et al. m(6) a modulates haematopoietic stem and progenitor cell specification. *Nature*. 2017;549:273–6.
 25. Li HB, Tong J, Zhu S, Batista PJ, Duffy EE, Zhao J, Bailis W, Cao G, Kroehling L, Chen Y, et al. m(6) a mRNA methylation controls T cell homeostasis by targeting the IL-7/STAT5/SOCS pathways. *Nature*. 2017;548:338–42.
 26. Weng H, Huang H, Wu H, Qin X, Zhao BS, Dong L, Shi H, Skibbe J, Shen C, Hu C, et al. METTL14 inhibits hematopoietic stem/progenitor differentiation and promotes Leukemogenesis via mRNA m(6) a modification. *Cell Stem Cell*. 2018;22:191–205 e199.
 27. Li ZJ, Weng HY, Su R, Weng XC, Zuo ZX, Li CY, Huang HL, Nachtergaele S, Dong L, Hu C, et al. FTO plays an oncogenic role in acute myeloid leukemia as a N6-Methyladenosine RNA Demethylase. *Cancer Cell*. 2017;31:127–41.
 28. Huisman B, Manske G, Carney S, Kalantry S. Functional dissection of the m6A RNA modification. *Trends Biochem Sci*. 2017;42:85–6.
 29. Takebe N, Miele L, Harris PJ, Jeong W, Bando H, Kahn M, Yang SX, Ivy SP. Targeting notch, hedgehog, and Wnt pathways in cancer stem cells: clinical update. *Nat Rev Clin Oncol*. 2015;12:445–64.
 30. Zhu P, Wang Y, Wu J, Huang G, Liu B, Ye B, Du Y, Gao G, Tian Y, He L, Fan Z. LncBRM initiates YAP1 signalling activation to drive self-renewal of liver cancer stem cells. *Nat Commun*. 2016;7:13608.
 31. Zhu P, Wang Y, Huang G, Ye B, Liu B, Wu J, Du Y, He L, Fan Z. Inc-beta-Catm elicits EZH2-dependent beta-catenin stabilization and sustains liver CSC self-renewal. *Nat Struct Mol Biol*. 2016;23:631–9.
 32. Chen Z, Gao Y, Yao L, Liu Y, Huang L, Yan Z, Zhao W, Zhu P, Weng H. LncFZD6 initiates Wnt/beta-catenin and liver TIC self-renewal through BRG1-mediated FZD6 transcriptional activation. *Oncogene*. 2018;37:3098–3112.
 33. Zhao BS, Roundtree IA, He C. Post-transcriptional gene regulation by mRNA modifications. *Nat Rev Mol Cell Biol*. 2017;18:31–42.
 34. Dominissini D, Nachtergaele S, Moshitch-Moshkovitz S, Peer E, Kol N, Ben-Haim MS, Dai Q, Di Segni A, Salmon-Divon M, Clark WC, et al. The dynamic N1-methyladenosine methylome in eukaryotic messenger RNA. *Nature*. 2016;530:441.
 35. Pan T. N6-methyl-adenosine modification in messenger and long non-coding RNA. *Trends Biochem Sci*. 2013;38:204–9.
 36. Chen Z, Yao L, Liu Y, Zhu P. LncTIC1 interacts with beta-catenin to drive liver TIC self-renewal and liver tumorigenesis. *Cancer Lett*. 2018;430:88–96.
 37. Chen Z, Liu Y, Yao L, Guo S, Gao Y, Zhu P. The long noncoding RNA lncZic2 drives the self-renewal of liver tumor-initiating cells via the protein kinase C substrates MARCKS and MARCKSL1. *J Biol Chem*. 2018;293:7982–92.
 38. Chen ZZ, Huang L, Wu YH, Zhai WJ, Zhu PP, Gao YF. LncSox4 promotes the self-renewal of liver tumour-initiating cells through Stat3-mediated Sox4 expression. *Nat Commun*. 2016;7:12598.

Publisher's Note

Springer Nature remains neutral with regard to jurisdictional claims in published maps and institutional affiliations.

Ready to submit your research? Choose BMC and benefit from:

- fast, convenient online submission
- thorough peer review by experienced researchers in your field
- rapid publication on acceptance
- support for research data, including large and complex data types
- gold Open Access which fosters wider collaboration and increased citations
- maximum visibility for your research: over 100M website views per year

At BMC, research is always in progress.

Learn more biomedcentral.com/submissions

