

RESEARCH ARTICLE

Open Access



# Cancer-related risk factors and incidence of major cancers by race, gender and region; analysis of the NIH-AARP diet and health study

Tomi Akinyemiju<sup>1,2,3\*</sup>, Howard Wiener<sup>1</sup> and Maria Pisu<sup>2,4</sup>

## Abstract

**Background:** Racial disparities in the incidence of major cancers may be attributed to differences in the prevalence of established, modifiable risk factors such as obesity, smoking, physical activity and diet.

**Methods:** Data from a prospective cohort of 566,398 adults aged 50–71 years, 19,677 African-American and 450,623 Whites, was analyzed. Baseline data on cancer-related risk factors such as smoking, alcohol, physical activity and dietary patterns were used to create an individual adherence score. Differences in adherence by race, gender and geographic region were assessed using descriptive statistics, and Cox proportional hazards models were used to determine the association between adherence and cancer incidence.

**Results:** Only 1.5% of study participants were adherent to all five cancer-related risk factor guidelines, with marked race-, gender- and regional differences in adherence overall. Compared with participants who were fully adherent to all five cancer risk factor criteria, those adherent to one or less had a 76% increased risk of any cancer incidence (HR: 1.76, 95% CI: 1.70 – 1.82), 38% increased risk of breast cancer (HR: 1.38, 95% CI: 1.25 – 1.52), and doubled the risk of colorectal cancer (HR: 2.06, 95% CI: 1.84 – 2.29). However, risk of prostate cancer was lower among participants adherent to one or less compared with those who were fully adherent (HR: 0.79, 95% CI: 0.75 – 0.85). The proportion of cancer incident cases attributable to low adherence was higher among African-Americans compared with Whites for all cancers (21% vs. 19%), and highest for colorectal cancer (25%) regardless of race.

**Conclusion:** Racial differences in the proportion of cancer incidence attributable to low adherence suggests unique opportunities for targeted cancer prevention strategies that may help eliminate racial disparities in cancer burden among older US adults.

**Keywords:** Cancer-related risk factors, Cancer incidence, Obesity, Diet, Physical activity

## Background

Colorectal, prostate and breast cancer are three of the four most common cancers among adults in the U.S. Combined, they are estimated to account for over 560,000 new cases and 115,000 deaths due to cancer in 2016 [1]. Advances in our understanding of risk factors,

screening techniques and cancer treatment have led to significant declines in incidence and mortality over the past several decades. However, African-Americans remain at disproportionately higher risk of developing prostate [2] and colorectal [3] cancers, and when diagnosed tend to have highly aggressive cancer phenotypes compared with whites [4, 5]. The fundamental cause of disparities in cancer incidence has been the subject of vigorous investigations for many years, however these racial differences have persisted. Differences in racially, socio-economically and geographically patterned etiologic

\* Correspondence: tomiakin@uky.edu

<sup>1</sup>Department of Epidemiology, University of Alabama at Birmingham, Birmingham, AL, USA

<sup>2</sup>Comprehensive Cancer Center, University of Alabama at Birmingham, Birmingham, AL, USA

Full list of author information is available at the end of the article



risk factors [6–8] such as obesity (48% in African-American versus 33% in Whites) [9] and physical inactivity (61% in African-American versus 45% in Whites) [10], have emerged as potentially modifiable risk factors that may contribute the observed disparities in cancer outcomes in US adults. Importantly, recent studies estimate that up to 50% of all new breast cancer cases could be prevented through healthy behaviors, specifically body weight, physical activity, alcohol intake and smoking [11]. These are also critical risk factors for colorectal [12, 13] and prostate [14, 15] cancers.

In this prospective cohort of African-American and White older adults, we examined adherence to body weight, physical activity, alcohol, smoking and nutrition guidelines by race, gender and region, and estimated the proportion of overall, breast, prostate and colorectal cancer incidence attributable to poor adherence. Understanding the contribution of these modifiable risk factors to cancer incidence may be useful for public health interventions focused on cancer prevention and inform strategies to eliminate racial and/or geographic disparities in cancer risk.

## Methods

### Study participants

Data for this study was obtained from the prospective National Institutes of Health-American Association of Retired Persons (NIH-AARP) Diet and Health Study. The cohort consists of 566,398 adults AARP members aged 50–71 years recruited in 1995–1996 (Additional file 1: Figure S1). At enrollment, participants completed a baseline questionnaire assessing lifestyle and behavioral risk factors such as smoking, alcohol, physical activity and dietary patterns. Participants with self-reported cancer at baseline ( $n = 49,318$ ), proxy respondents ( $n = 15,760$ ), death record data only ( $n = 4255$ ) or who had missing data on behavioral risk factors (40,676) and race (9566) were excluded from analysis. The final analysis included a total of 470,000 adults; 19,677 African-American and 450,623 Whites with no prior history of any cancer. With a sample size of 19,677 for African-Americans, we were well powered with Type 1 error of 0.05 and Type II error of 80% to detect effect sizes as low as 1.1 and adherence levels as low as 20%.

### Ascertainment of cancer incidence

Incident cancer cases were identified through a linkage to state cancer registries through December 31, 2012. Detailed information for each cancer diagnosis was obtained on diagnosis date, stage, grade, and first course of treatment within the first year of diagnosis. Incident cancer ascertainment has been estimated to be about 90% complete [16].

### Cancer-related risk factors

The American Cancer Society (ACS) [17] and the World Cancer Research Fund/American Institute for Cancer Research (WCRF/AICR) [18] developed specific guidelines regarding body weight, physical activity, diet, smoking and alcohol consumption to guide cancer prevention efforts. Here, we assessed adherence to the WCRF/AICR guidelines on five cancer-related risk factors; physical activity, body weight, alcohol use, smoking and nutrition (fruit and vegetable intake). We used self-reported measures obtained during enrollment based on the 12-month period prior to enrollment. Each participant was assigned a score of 1 if fully adherent, 0.5 if partially adherent, and 0 if not adherent (Table 1). Each risk factor was weighted equally and adherence scores were summed up to create a total adherence score ranging from 0 to 5.

### Statistical analysis

We assessed adherence to each cancer prevention guideline overall (by summing the total adherence score) and for each risk factor separately. We compared baseline characteristics and adherence by race and gender using chi-square tests and ANOVA as appropriate. We also examined differences in adherence by geographic region, categorized as: Northeast, Mid-West, South, and West. We conducted Cox proportional hazards models to determine the association between adherence and cancer incidence, and reported the results from Cox models as hazard ratios (HR) and 95% confidence intervals. We examined Kaplan-Meier survival curves and found no evidence of violations of the proportional hazards assumption. All statistical models were stratified by race, and adjusted for baseline characteristics such as age, marital status, education, health status, and gender (for colorectal cancer). Trend tests were performed by assessing the

**Table 1** Cancer related risk factors adherence criteria

| Risk Factor  | Adherence Guideline              | Adherence Score |
|--|----------------------------------|-----------------|
| Physical Activity<br>(# of 20 min activities)          | ≥5 per week                      | 1               |
|  | ≥1 per month - < 5 per week      | 0.5             |
|  | <1 per month                     | 0               |
| Obesity (BMI)  | ≥18.5 - ≤ 25 kg/m <sup>2</sup>   | 1               |
|  | >25 - ≤ 30 kg/m <sup>2</sup>     | 0.5             |
|  | <18.5 or >30 kg/m <sup>2</sup>   | 0               |
| Alcohol Use<br>(# drinks per week)                     | Women ≤7, Men ≤14                | 1               |
|  | Women >7 - ≤ 14,<br>Men >14 ≤ 28 | 0.5             |
|  | Women >14, Men >28               | 0               |
| Nutrition (Fruit and<br>Vegetable Servings<br>per day) | ≥5                               | 1               |
|  | ≥3 - < 5                         | 0.5             |
|  | <3                               | 0               |

linear relationship between adherence and cancer incidence. Censoring occurred at the time of first primary cancer diagnosis, loss to follow up or the end of incidence follow-up period, whichever occurred first. The attributable risk (AR) due to adherence was calculated from models based on individual's region, race, background covariates, and adherence value using the appropriate model, and the counter-factual estimate for that individual assuming the highest rate of adherence. The proportions of individuals categorized as affected (i.e. for which the random number did not exceed the risk estimate) for both situations (i.e. factual and counterfactual) were divided to form a risk ratio (RR), and AR calculated using the formula  $(RR-1)/RR$ . Confidence intervals for the AR were generated from bootstrapped resamples of 1000 draws of random numbers from a uniform distribution and compared to the estimates, and this was repeated for the counterfactual estimates to provide a measure of the precision of AR estimates. All analyses were conducted using SAS 9.4 and R statistical package.

## Results

### Characteristics of study population

The majority of NIH-AARP participants were between ages 65 to 69 years (32%), and most participants were male (60%), married (69%) and 39% had at least a college degree (Table 2). About 69% of participants rated their health status as good or very good. The median follow-up time was 15.5 person-years (Std. Dev: 4.8) for both African-Americans and Whites.

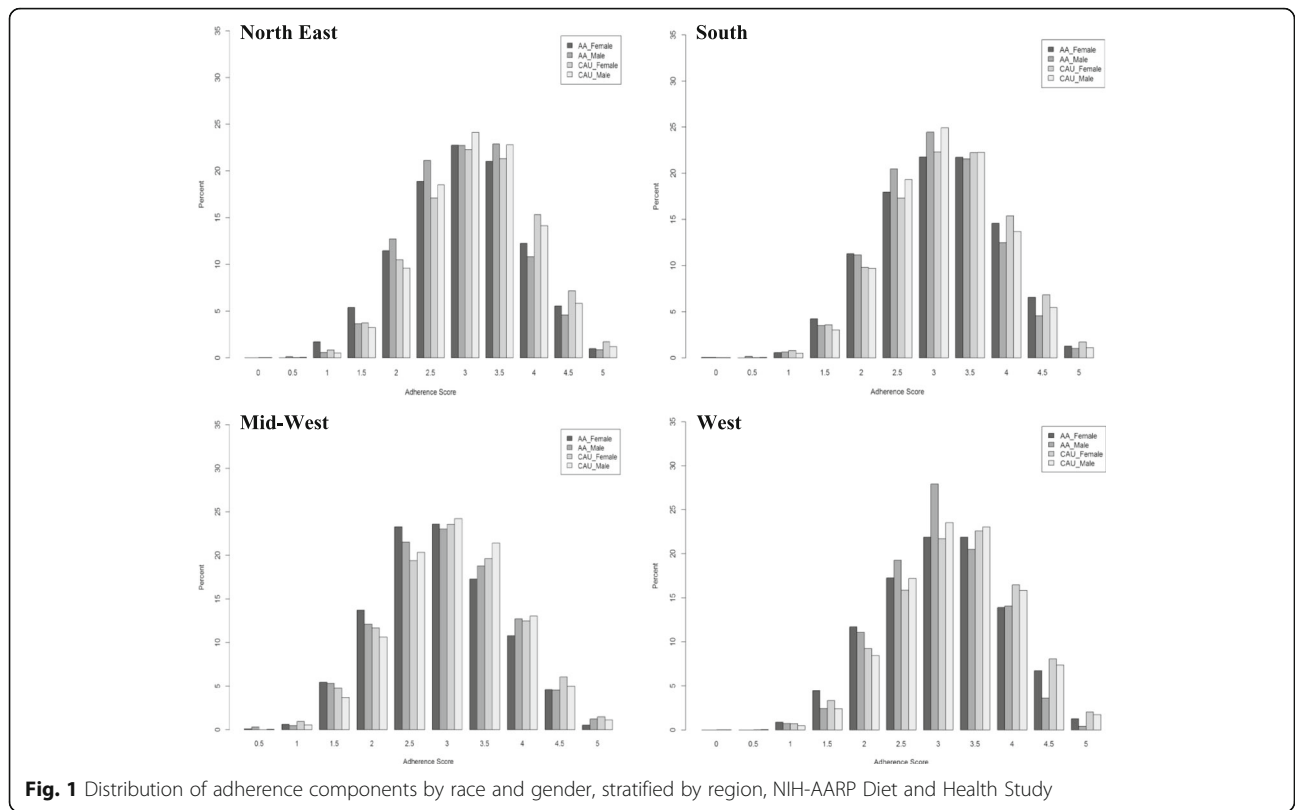
### Adherence to cancer-related risk factors

Only 1.5% of study participants were adherent to all five cancer-related risk factor guidelines, with marked race-, gender- and regional differences in adherence overall (Fig. 1). Adherence to each risk factor guideline also varied significantly by gender and region (Table 3). **Obesity:** Only 35% of participants met the adherence criteria for obesity or body weight (defined as BMI between 18.5 and 25), 22% did not meet the criteria at all, and 43% were overweight. **Alcohol Use:** Adherence to guidelines regarding alcohol was high, with over 98% of participants meeting the criteria i.e. consuming 7 or less alcoholic drinks per week for females and 14 or less alcoholic drinks per week for males. **Smoking:** Less than 40% of participants were adherent to guidelines regarding smoking i.e. never smokers, while 52% were partially adherent meaning that they were former but not current smokers. **Nutrition:** Only 26% of study participants were adherent to nutrition guidelines, and 36.5% were totally non-adherent i.e. did not consume at least 5 servings of fruits and vegetables per day. **Physical Activity:** Only 23% of study participants were adherent to physical activity guidelines i.e. at least 210 min of moderate physical activity per week.

**Table 2** Baseline Characteristics of NIH-AARP Study Participants, 1995-1996

|                                   | Overall          | White            | AA              |
|-----------------------------------|------------------|------------------|-----------------|
| <b>Age Category</b>               |                  |                  |                 |
| < 55 years                        | 64,491 (13.71%)  | 61,318 (13.61%)  | 3173 (16.13%)   |
| 55-59 years                       | 106,893 (22.73%) | 101,588 (22.54%) | 5305 (26.96%)   |
| 60-64 years                       | 132,005 (28.07%) | 126,108 (27.99%) | 5897 (29.97%)   |
| 65-69 years                       | 150,255 (31.95%) | 145,423 (32.27%) | 4832 (24.56%)   |
| > =70 years                       | 16,656 (3.54%)   | 16,186 (3.59%)   | 470 (2.39%)     |
| <b>Gender</b>                     |                  |                  |                 |
| Male                              | 280,558 (59.66%) | 272,444 (60.46%) | 8114 (41.24%)   |
| Female                            | 189,742 (40.34%) | 178,179 (39.54%) | 11,563 (58.76%) |
| <b>Marital Status</b>             |                  |                  |                 |
| Married                           | 323,303 (69.11%) | 314,122 (70.05%) | 9181 (47.27%)   |
| Widowed                           | 51,660 (11.04%)  | 48,293 (10.77%)  | 3367 (17.34%)   |
| Divorced                          | 64,882 (13.87%)  | 60,310 (13.45%)  | 4572 (23.54%)   |
| Separated                         | 5483 (1.17%)     | 4445 (0.99%)     | 1038 (5.34%)    |
| Never Married                     | 22,508 (4.81%)   | 21,244 (4.74%)   | 1264 (6.51%)    |
| <b>Education</b>                  |                  |                  |                 |
| < 8 years                         | 27,821 (6.07%)   | 25,646 (5.83%)   | 2175 (11.66%)   |
| 8-11 years                        | 93,358 (20.37%)  | 89,446 (20.35%)  | 3912 (20.98%)   |
| 12 years/High School              | 46,651 (10.18%)  | 44,926 (10.22%)  | 1725 (9.25%)    |
| Post-High School/<br>Some College | 109,302 (23.85%) | 104,369 (23.74%) | 4933 (26.46%)   |
| College or post-grad              | 181,132 (39.53%) | 175,231 (39.86%) | 5901 (31.65%)   |
| <b>Health Status</b>              |                  |                  |                 |
| Excellent                         | 81,207 (17.50%)  | 79,438 (17.86%)  | 1769 (9.20%)    |
| Very good                         | 166,103 (35.80%) | 160,658 (36.13%) | 5445 (28.31%)   |
| Good                              | 160,182 (34.53%) | 152,225 (34.23%) | 7957 (41.37%)   |
| Fair                              | 48,823 (10.52%)  | 45,256 (10.18%)  | 3567 (18.55%)   |
| Poor                              | 7641 (1.65%)     | 7145 (1.61%)     | 496 (2.58%)     |
| <b>State of Residence</b>         |                  |                  |                 |
| CA                                | 139,633 (29.69%) | 135,081 (29.98%) | 4552 (23.13%)   |
| FL                                | 100,509 (21.37%) | 98,147 (21.78%)  | 2362 (12.00%)   |
| GA                                | 13,663 (2.91%)   | 12,468 (2.77%)   | 1195 (6.07%)    |
| LA                                | 18,225 (3.88%)   | 16,901 (3.75%)   | 1324 (6.73%)    |
| MI                                | 24,420 (5.19%)   | 22,254 (4.94%)   | 2166 (11.01%)   |
| NC                                | 39,889 (8.48%)   | 37,678 (8.36%)   | 2211 (11.24%)   |
| NJ                                | 60,484 (12.86%)  | 57,755 (12.82%)  | 2729 (13.87%)   |
| PA                                | 73,477 (15.62%)  | 70,339 (15.61%)  | 3138 (15.95%)   |
| <b>Cancer Type</b>                |                  |                  |                 |
| Any Cancer                        | 114,392 (24.33%) | 109,971 (23.99%) | 4421 (22.47%)   |
| Breast Cancer                     | 12,698 (6.70%)   | 12,020 (6.75%)   | 678 (5.87%)     |
| Prostate Cancer                   | 30,664 (10.93%)  | 29,222 (10.73%)  | 1442 (17.77%)   |
| Colorectal Cancer                 | 10,300 (2.19%)   | 9845 (2.19%)     | 455 (2.31%)     |

For breast and prostate cancer, the percentages in the above table are based on females only and males only, respectively



**Table 3** Adherence to Specific Cancer Risk Factors by Race, Gender and Region, NIH-AARP Diet and Health Study (%<sup>a</sup>)

|               | Obesity |       |       | Alcohol |      |       | Smoking |       |       | Nutrition |       |       | Physical Activity |       |       |
|---------------|---------|-------|-------|---------|------|-------|---------|-------|-------|-----------|-------|-------|-------------------|-------|-------|
|               | 0       | 0.5   | 1     | 0       | 0.5  | 1     | 0       | 0.5   | 1     | 0         | 0.5   | 1     | 0                 | 0.5   | 1     |
| Overall       | 21.71   | 42.96 | 35.33 | 0.29    | 0.85 | 98.85 | 11.89   | 51.82 | 36.29 | 36.54     | 37.75 | 25.71 | 20.57             | 56.81 | 22.61 |
| Gender        |         |       |       |         |      |       |         |       |       |           |       |       |                   |       |       |
| Male          | 20.47   | 49.87 | 29.66 | 0.40    | 1.15 | 98.45 | 10.37   | 59.29 | 30.34 | 35.40     | 38.17 | 26.43 | 16.91             | 58.25 | 24.84 |
| Female        | 23.59   | 32.49 | 43.92 | 0.13    | 0.40 | 99.47 | 14.20   | 40.49 | 45.31 | 38.26     | 37.13 | 24.61 | 26.13             | 54.63 | 19.24 |
| Race          |         |       |       |         |      |       |         |       |       |           |       |       |                   |       |       |
| White         | 21.21   | 42.96 | 35.83 | 0.29    | 0.85 | 98.86 | 11.74   | 52.10 | 36.15 | 36.73     | 38.07 | 25.20 | 20.27             | 56.95 | 22.78 |
| AA            | 34.27   | 42.99 | 22.74 | 0.34    | 0.92 | 98.74 | 15.58   | 44.74 | 39.68 | 31.85     | 29.87 | 38.28 | 28.10             | 53.37 | 18.53 |
| Region        |         |       |       |         |      |       |         |       |       |           |       |       |                   |       |       |
| Midwest       | 26.46   | 42.98 | 30.55 | 0.35    | 0.79 | 98.87 | 13.19   | 50.95 | 35.86 | 36.91     | 37.37 | 25.72 | 24.21             | 56.97 | 18.81 |
| North East    | 23.58   | 44.34 | 32.09 | 0.26    | 0.76 | 98.97 | 11.69   | 50.45 | 37.86 | 33.38     | 38.61 | 28.01 | 23.70             | 56.48 | 19.83 |
| South         | 20.95   | 43.20 | 35.85 | 0.33    | 0.96 | 98.71 | 12.92   | 52.97 | 34.11 | 38.96     | 36.90 | 24.15 | 19.58             | 57.01 | 23.41 |
| West          | 20.11   | 41.38 | 38.51 | 0.29    | 0.89 | 98.83 | 10.60   | 51.83 | 37.56 | 36.46     | 38.07 | 25.47 | 18.27             | 56.86 | 24.87 |
| Race-Gender   |         |       |       |         |      |       |         |       |       |           |       |       |                   |       |       |
| White Males   | 20.27   | 49.87 | 29.85 | 0.40    | 1.14 | 98.46 | 10.23   | 59.41 | 30.36 | 35.44     | 38.38 | 26.18 | 16.73             | 58.31 | 24.96 |
| White Females | 22.66   | 32.16 | 45.18 | 0.12    | 0.40 | 99.48 | 14.12   | 40.68 | 45.21 | 38.74     | 37.59 | 23.67 | 25.81             | 54.82 | 19.37 |
| AA Males      | 27.55   | 49.68 | 22.76 | 0.45    | 1.52 | 98.03 | 15.50   | 54.89 | 29.61 | 34.01     | 30.66 | 35.33 | 23.46             | 56.04 | 20.50 |
| AA Females    | 39.22   | 38.06 | 22.72 | 0.25    | 0.48 | 99.27 | 15.63   | 37.26 | 47.10 | 30.27     | 29.29 | 40.44 | 31.52             | 51.39 | 17.09 |

Risk factors defined based on WCRF/AICR criteria for adherence; 0 if not met, 0.5 if partially met and 1.0 if fully met

<sup>a</sup>Proportion of study participants at each level of adherence

### Adherence to guidelines and cancer incidence

Increasing adherence to cancer prevention guidelines was associated with progressively reduced risk of any cancer incidence (Table 4, Fig. 2). Compared with participants who were fully adherent to all five cancer risk factor criteria, those adherent to one or less had a 76% increased risk of cancer incidence (HR: 1.76, 95% CI: 1.70 – 1.82), those adherent to two criteria had a 53% increased risk (HR: 1.53, 95% CI: 1.49 – 1.56), and those adherent to four had a 15% increased risk (HR: 1.15, 95% CI: 1.14 – 1.16, *p*-trend <0.001). Similar associations were observed for Whites as well as African-Americans. Breast cancer incidence increased significantly with reduced overall adherence, with a 38% increased risk of breast cancer among participants adherent to one or no criteria (HR: 1.38, 95% CI: 1.25 – 1.52, *p*-trend <0.001). Similar magnitude of association was observed among Whites as well as African-Americans, although the results for African-Americans were not statistically significant. Prostate cancer incidence appeared to be inversely associated with adherence, with a 21% reduced risk among participants adherent to only one or no criteria (HR: 0.79, 95% CI: 0.75 – 0.85, *p*-trend <0.001) and a 6% reduced risk among those adherent to four criteria compared with five (HR: 0.94, 95% CI: 0.93 – 0.96, *p*-trend 0.001), although the association among African-Americans was not statistically significant. The risk of colorectal cancer increased by over 100% among participants adherent to one or no criteria (HR: 2.06, 95% CI: 1.84 – 2.29, *p*-trend <0.001) compared with those adherent to all five, and the association was non-significant among African-Americans. Adherence to one or none of criteria compared with all five was associated with over 100% increased risk of any cancer in the South (HR: 2.09, 95% CI: 1.83-2.38) and North-East (HR: 2.01, 95% CI: 1.86-2.17), and a 79% and 83% increased risk in the Mid-West and West respectively (Table 5).

The proportion of cancer incidence attributable to low adherence was higher among African-Americans compared with Whites for all cancers (21% vs. 19%), and highest for colorectal cancer (25%) regardless of race. Racial difference in the attributable fraction was observed for breast and prostate cancer: 16% of breast cancer incidence was attributable to low adherence for African-American and less than 8% for Whites. Notably, 18% of prostate cancer incidence was prevented due to low adherence overall; 12% for African-American and 18% for Whites (Fig. 3).

### Discussion

In one of the largest prospective cohort studies of older adults in the US, we observed racial, gender and regional differences in the level of adherence to AICR/WCRF cancer-related risk factor guidelines. At baseline, adherence

was overwhelmingly low, with less than 2% of older adults adherent to all five criteria; less than 1% of African-American and 1.5% of Whites met all five criteria for body weight, physical activity, smoking, alcohol and diet. Adherence was highest in the West for obesity and physical activity, and in the North East for alcohol use, smoking and nutrition. Cancer risk overall increased significantly with reduced adherence to the cancer-related risk factor guidelines; adherence to one or fewer criteria (relative to five) increased the risk of all cancers by 76%, breast cancer by 38%, and colorectal cancer by 100%, however lower adherence was associated with a 21% reduced risk of prostate cancer. Although the magnitude of the associations was similar between African-American and Whites, the only statistically significant association for African-Americans was for the risk of any cancer and not for specific cancers. Overall, lower adherence was associated with increased cancer risk consistently across regions, except for colorectal cancer where there was a higher but non-significant association in the Mid-West. About 20% of all cancers, 10% of breast and 24% of colorectal cancers are attributable to low adherence, however among White women, only 8% of breast cancer incidence was attributable to low adherence, compared with 18% for African-American women, and close to 20% of prostate cancer cases were actually prevented by low adherence.

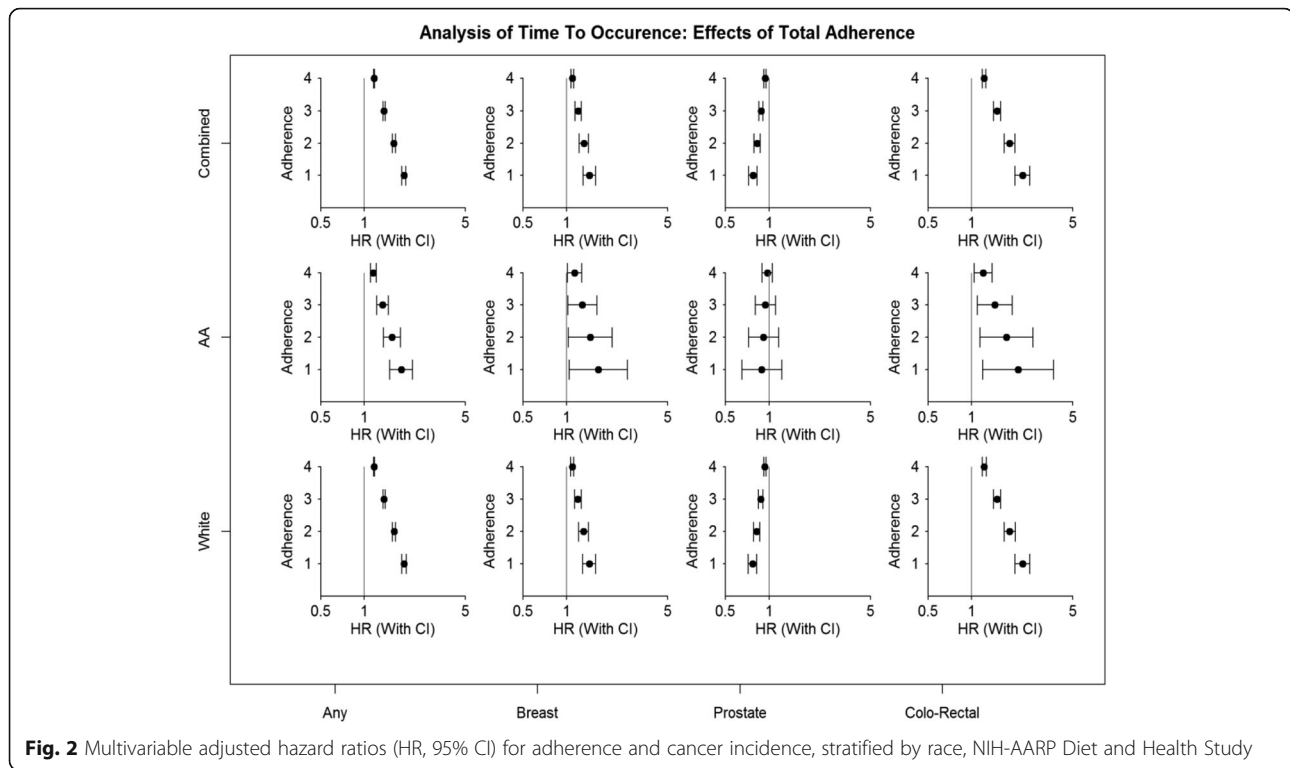
Several studies have examined the influence of cancer-related risk factors in general, and adherence to cancer prevention guidelines, on the risk of developing cancer and have observed similar results to ours [19–22]. However, no other study has examined race-gender-region differences in the level of adherence among older adults, and assessed whether the association with cancer incidence was similar across racial groups. This gap has been a major limitation in the previous literature for many reasons. First, given the progressively ageing population of the US [23], the influence of modifiable lifestyle risk factors on cancer risk deserves more attention that it has received. For the most common cancers, especially breast, prostate and colorectal, there is no single etiologic risk factor that explains the risk of cancer development beyond age and lifestyle related modifiable factors such as obesity, diet, physical activity, smoking and alcohol [24]. We find that the attributable risk due to these lifestyle risk factors is close to 20%, i.e. about 20% of new cancer cases could have been prevented due to complete adherence. Second, the highly aggressive and fast growing nature of tumors prevalent among African-Americans suggests that there may be certain uniquely-patterned risk factors in this population group that may only be identified with population-specific studies [25]. Third, if cancer prevention strategies are developed focusing on specific risk factors and targeted to race-gender-region population sub-groups where they are most needed [26], with



**Table 4** Association between Adherence and Any, Breast, Colorectal and Prostate Cancer Incidence by Race, NIH-AARP Diet and Health Study

| Any Cancer HR (95% CI)   | Breast Cancer HR (95% CI) |                  |                  | Prostate Cancer HR (95% CI) |                  |                  | Colorectal Cancer HR (95% CI) |                  |                  |                  |                  |                  |
|--------------------------|---------------------------|------------------|------------------|-----------------------------|------------------|------------------|-------------------------------|------------------|------------------|------------------|------------------|------------------|
|                          | All                       | White            | AA               | All                         | White            | AA               | All                           | White            | AA               |                  |                  |                  |
| <b>Obesity</b>           |                           |                  |                  |                             |                  |                  |                               |                  |                  |                  |                  |                  |
| 0                        | 1.08 (1.06-1.1)           | 1.08 (1.06-1.1)  | 0.91 (0.83-0.99) | 1.16 (1.1-1.22)             | 1.14 (1.09-1.2)  | 1.1 (0.89-1.37)  | 0.87 (0.84-0.89)              | 0.87 (0.84-0.89) | 0.89 (0.76-1.03) | 1.3 (1.22-1.38)  | 1.29 (1.2-1.37)  | 1.09 (0.83-1.43) |
| 0.5                      | 1.04 (1.03-1.05)          | 1.04 (1.03-1.05) | 0.95 (0.91-0.99) | 1.08 (1.05-1.1)             | 1.07 (1.04-1.09) | 1.05 (0.94-1.17) | 0.93 (0.91-0.95)              | 0.93 (0.92-0.95) | 0.94 (0.87-1.02) | 1.14 (1.11-1.17) | 1.14 (1.11-1.17) | 1.04 (0.91-1.2)  |
| <i>P-trend</i>           | <0.001                    | <0.001           | 0.031            | <0.001                      | <0.001           | 0.3713           | <0.001                        | <0.001           | 0.1258           | <0.001           | <0.001           | 0.53             |
| <b>Alcohol</b>           |                           |                  |                  |                             |                  |                  |                               |                  |                  |                  |                  |                  |
| 0                        | 1.55 (1.43-1.68)          | 1.54 (1.44-1.66) | 1.64 (1.16-2.31) | 1.78 (1.26-2.51)            | 1.5 (1.07-2.09)  | 2.71 (1.06-6.9)  | 1.08 (0.92-1.27)              | 1.04 (0.89-1.2)  | 1.05 (0.56-1.95) | 2.02 (1.59-2.58) | 1.99 (1.59-2.47) | 3.64 (1.6-8.27)  |
| 0.5                      | 1.24 (1.19-1.29)          | 1.24 (1.2-1.29)  | 1.28 (1.08-1.52) | 1.33 (1.12-1.59)            | 1.22 (1.04-1.45) | 1.64 (1.03-2.63) | 1.04 (0.96-1.13)              | 1.02 (0.94-1.1)  | 1.02 (0.75-1.4)  | 1.42 (1.26-1.61) | 1.41 (1.26-1.57) | 1.91 (1.27-2.88) |
| <i>P-trend</i>           | <0.001                    | <0.001           | <0.001           | 0.01763                     | 0.037            | 0.037            | 0.359                         | 0.65             | 0.89             | <0.001           | <0.001           | 0.0036           |
| <b>Smoking</b>           |                           |                  |                  |                             |                  |                  |                               |                  |                  |                  |                  |                  |
| 0                        | 1.68 (1.65-1.72)          | 1.7 (1.67-1.74)  | 1.63 (1.49-1.79) | 1.11 (1.05-1.18)            | 1.12 (1.06-1.18) | 1.28 (1.02-1.6)  | 0.83 (0.79-0.86)              | 0.82 (0.79-0.86) | 0.88 (0.75-1.05) | 1.41 (1.32-1.51) | 1.42 (1.33-1.51) | 1.3 (0.97-1.73)  |
| 0.5                      | 1.3 (1.28-1.31)           | 1.31 (1.29-1.32) | 1.28 (1.22-1.34) | 1.06 (1.03-1.09)            | 1.06 (1.03-1.09) | 1.13 (1.01-1.27) | 0.91 (0.89-0.93)              | 0.91 (0.89-0.93) | 0.94 (0.86-1.02) | 1.19 (1.15-1.23) | 1.19 (1.15-1.23) | 1.14 (0.99-1.31) |
| <i>P-trend</i>           | 0                         | 0                | <0.001           | <0.001                      | <0.001           | 0.033            | <0.001                        | <0.001           | 0.1589           | <0.001           | <0.001           | 0.07298          |
| <b>Nutrition</b>         |                           |                  |                  |                             |                  |                  |                               |                  |                  |                  |                  |                  |
| 0                        | 1.11 (1.09-1.13)          | 1.11 (1.1-1.13)  | 1.09 (1.01-1.17) | 1.07 (1.01-1.12)            | 1.07 (1.02-1.12) | 1.13 (0.94-1.37) | 1.02 (0.99-1.05)              | 1.02 (0.99-1.05) | 0.93 (0.82-1.06) | 1.13 (1.07-1.19) | 1.13 (1.08-1.2)  | 1.15 (0.92-1.44) |
| 0.5                      | 1.05 (1.04-1.06)          | 1.05 (1.05-1.06) | 1.04 (1.01-1.08) | 1.03 (1.01-1.06)            | 1.04 (1.01-1.06) | 1.06 (0.97-1.17) | 1.01 (0.99-1.03)              | 1.01 (0.99-1.03) | 0.96 (0.91-1.03) | 1.06 (1.03-1.09) | 1.07 (1.04-1.09) | 1.07 (0.95-1.2)  |
| <i>P-trend</i>           | <0.001                    | <0.001           | 0.025            | 0.01495                     | 0.004            | 0.199            | 0.254                         | 0.174            | 0.2847           | <0.001           | <0.001           | 0.2305           |
| <b>Physical Activity</b> |                           |                  |                  |                             |                  |                  |                               |                  |                  |                  |                  |                  |
| 0                        | 1.15 (1.13-1.18)          | 1.15 (1.13-1.17) | 1.18 (1.07-1.3)  | 1.12 (1.05-1.19)            | 1.11 (1.05-1.18) | 1.28 (0.99-1.67) | 0.94 (0.90-0.97)              | 0.92 (0.88-0.95) | 1.04 (0.87-1.24) | 1.33 (1.24-1.42) | 1.35 (1.26-1.44) | 1.15 (0.85-1.56) |
| 0.5                      | 1.07 (1.06-1.09)          | 1.07 (1.06-1.08) | 1.09 (1.03-1.14) | 1.06 (1.03-1.09)            | 1.05 (1.02-1.09) | 1.13 (0.99-1.29) | 0.97 (0.95-0.99)              | 0.96 (0.94-0.98) | 1.02 (0.93-1.11) | 1.15 (1.11-1.19) | 1.16 (1.12-1.2)  | 1.07 (0.92-1.25) |
| <i>P-trend</i>           | <0.001                    | <0.001           | <0.001           | <0.001                      | <0.001           | 0.063            | 0.001                         | <0.001           | 0.68             | <0.001           | <0.001           | 0.3624           |
| <b>Overall Adherence</b> |                           |                  |                  |                             |                  |                  |                               |                  |                  |                  |                  |                  |
| 1                        | 1.76 (1.7-1.82)           | 1.76 (1.7-1.82)  | 1.69 (1.42-2)    | 1.38 (1.26-1.52)            | 1.38 (1.25-1.52) | 1.45 (0.93-2.25) | 0.79 (0.75-0.85)              | 0.70 (0.74-0.84) | 0.98 (0.73-1.33) | 2.06 (1.84-2.29) | 2.07 (1.86-2.32) | 1.64 (0.96-2.79) |
| 2                        | 1.53 (1.49-1.56)          | 1.53 (1.49-1.57) | 1.48 (1.3-1.68)  | 1.28 (1.19-1.37)            | 1.27 (1.19-1.37) | 1.32 (0.95-1.84) | 0.84 (0.80-0.88)              | 0.84 (0.79-0.88) | 0.98 (0.79-1.24) | 1.72 (1.58-1.86) | 1.73 (1.59-1.88) | 1.45 (0.97-2.16) |
| 3                        | 1.33 (1.3-1.35)           | 1.33 (1.31-1.35) | 1.31 (1.19-1.42) | 1.18 (1.12-1.23)            | 1.18 (1.12-1.23) | 1.2 (0.96-1.5)   | 0.89 (0.86-0.92)              | 0.89 (0.86-0.92) | 0.99 (0.85-1.15) | 1.43 (1.36-1.51) | 1.44 (1.36-1.52) | 1.28 (0.98-1.67) |
| 4                        | 1.15 (1.14-1.16)          | 1.15 (1.14-1.16) | 1.14 (1.09-1.19) | 1.08 (1.06-1.11)            | 1.08 (1.06-1.11) | 1.1 (0.98-1.23)  | 0.94 (0.93-0.96)              | 0.94 (0.93-0.96) | 0.99 (0.92-1.07) | 1.2 (1.17-1.23)  | 1.2 (1.17-1.23)  | 1.13 (0.99-1.29) |
| <i>P-trend</i>           | <0.001                    | <0.001           | <0.001           | <0.001                      | <0.001           | 0.101            | <0.001                        | <0.001           | 0.9207           | <0.001           | <0.001           | 0.06741          |

All models estimated using Cox Proportional Hazards regression and adjusted for age, gender (for colorectal cancer), marital status, and education  
 Abbreviations: CI confidence interval, AA African-Americans



considerations of unique facilitators and barriers to adherence in those sub-groups, they may be more likely to succeed compared with one-size fits all approaches to cancer prevention [27].

The biological mechanisms linking modifiable lifestyle factors and cancer development have been well established, including in a comprehensive review by [28]. Excess calorie intake and low physical activity are associated with increased accumulation of adipose tissue, leading to overweight and obesity [29]. These in turn lead to hyperglycemia, hypertriglyceridemia, inflammation and insulin resistance [30], which have been shown to increase the risk of breast and colorectal cancer incidence, as well as the development of the more aggressive hormone-receptor negative sub-types of breast cancer [31, 32]. Other pathways include the alteration of circulating adipokines, altered secretion of sex hormones such as estrogen and androgen, as well as multiple inflammatory markers such as cytokines [33]. While moderate alcohol intake has been associated with reduced risk for some types of cardiovascular diseases [34], the association in cancer has been most studied in relation to breast cancer, with results suggesting a modest increase in incidence associated with higher alcohol consumption [35]. We observed that higher alcohol use was associated with significantly increased risk of cancers in both racial groups, however stronger associations were observed among African-Americans compared with Whites. African-Americans with excess alcohol use were

at more than a 100% increased risk of breast cancer, and almost 300% increased risk of colorectal cancer compared with a 50% increased risk of breast cancer and 100% increased risk of colorectal cancer. The biological mechanism linking this association may involve race-specific differences in alcohol metabolism, alterations in inflammatory response and/or interactions with underlying comorbid conditions. Non-biological mechanisms such as differences in the type of alcohol consumed (e.g. wine, beer, spirits) or drinking patterns (e.g. binge drinking) may also play a role.

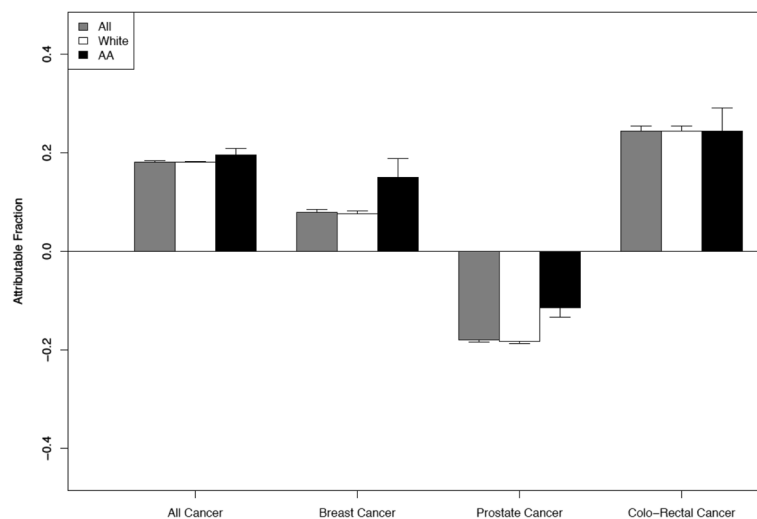
Genetic and epigenetic alterations in cancer-related genes, influenced by lifestyle factors, have also been shown to influence cancer tumorigenesis [36]. Nevertheless, our observation of racial differences in the proportion of breast and prostate cancer cases attributable to adherence suggests that the same risk factor may exert more severe biological effects on certain racial groups compared with others, and research studies focused on identifying the mechanisms underlying these differences, for example due to biological interactions or synergy between cancer-related risk factors and underlying comorbidities, may provide information on the causal components for these major cancer types.

Despite convincing evidence regarding the negative influence of obesity, smoking, and low physical activity on health outcomes in general, and cancer risk specifically, we observed that in 1995–1996 only about a third of older US adults met each of the modifiable lifestyle risk

**Table 5** Association (HR, 95% CI) between Adherence and Any, Breast, Colorectal and Prostate Cancer Incidence by Region, NIH-AARP Diet and Health Study

| Adherence                | All                | Mid-West           | North East         | South              | West               |
|--------------------------|--------------------|--------------------|--------------------|--------------------|--------------------|
| <b>Any Cancer</b>        |                    |                    |                    |                    |                    |
| 1                        | 1.88 (1.82 - 1.95) | 1.84 (1.59 - 2.14) | 2.03 (1.91 - 2.17) | 1.98 (1.87 - 2.10) | 1.64 (1.54 - 1.75) |
| 2                        | 1.61 (1.57 - 1.65) | 1.58 (1.41 - 1.77) | 1.70 (1.63 - 1.79) | 1.67 (1.60 - 1.75) | 1.45 (1.38 - 1.52) |
| 3                        | 1.37 (1.35 - 1.4)  | 1.36 (1.26 - 1.46) | 1.43 (1.38 - 1.47) | 1.41 (1.37 - 1.45) | 1.28 (1.24 - 1.32) |
| 4                        | 1.17 (1.16 - 1.18) | 1.17 (1.12 - 1.21) | 1.19 (1.18 - 1.21) | 1.19 (1.17 - 1.20) | 1.13 (1.11 - 1.15) |
| 5                        | Ref                | Ref                | Ref                | Ref                | Ref                |
| <b>Breast Cancer</b>     |                    |                    |                    |                    |                    |
| 1                        | 1.44 (1.30 - 1.59) | 2.03 (1.32 - 3.12) | 1.53 (1.26 - 1.85) | 1.36 (1.15 - 1.61) | 1.38 (1.16 - 1.64) |
| 2                        | 1.31 (1.22 - 1.42) | 1.70 (1.23 - 2.35) | 1.37 (1.19 - 1.59) | 1.26 (1.11 - 1.43) | 1.27 (1.12 - 1.45) |
| 3                        | 1.20 (1.14 - 1.26) | 1.42 (1.15 - 1.77) | 1.24 (1.12 - 1.36) | 1.17 (1.07 - 1.27) | 1.17 (1.08 - 1.28) |
| 4                        | 1.10 (1.07 - 1.12) | 1.19 (1.07 - 1.33) | 1.11 (1.06 - 1.17) | 1.08 (1.04 - 1.13) | 1.08 (1.04 - 1.13) |
| 5                        | Ref                | Ref                | Ref                | Ref                | Ref                |
| <b>Prostate Cancer</b>   |                    |                    |                    |                    |                    |
| 1                        | 0.77 (0.72 - 0.83) | 0.82 (0.62 - 1.08) | 0.77 (0.68 - 0.87) | 0.79 (0.71 - 0.89) | 0.75 (0.66 - 0.85) |
| 2                        | 0.82 (0.78 - 0.87) | 0.86 (0.70 - 1.06) | 0.83 (0.75 - 0.90) | 0.84 (0.77 - 0.91) | 0.80 (0.73 - 0.88) |
| 3                        | 0.88 (0.85 - 0.91) | 0.91 (0.79 - 1.04) | 0.88 (0.83 - 0.94) | 0.89 (0.84 - 0.94) | 0.86 (0.81 - 0.92) |
| 4                        | 0.94 (0.92 - 0.95) | 0.95 (0.89 - 1.02) | 0.94 (0.91 - 0.97) | 0.94 (0.92 - 0.97) | 0.93 (0.90 - 0.96) |
| 5                        | Ref                | Ref                | Ref                | Ref                | Ref                |
| <b>Colorectal Cancer</b> |                    |                    |                    |                    |                    |
| 1                        | 2.24 (2.00 - 2.52) | 3.43 (2.00 - 5.88) | 2.64 (2.16 - 3.24) | 2.27 (1.87 - 2.75) | 1.72 (1.39 - 2.14) |
| 2                        | 1.83 (1.68 - 2.00) | 2.52 (1.68 - 3.78) | 2.07 (1.78 - 2.41) | 1.85 (1.60 - 2.13) | 1.50 (1.28 - 1.77) |
| 3                        | 1.50 (1.41 - 1.59) | 1.85 (1.42 - 2.42) | 1.63 (1.47 - 1.80) | 1.51 (1.37 - 1.66) | 1.31 (1.18 - 1.46) |
| 4                        | 1.22 (1.19 - 1.26) | 1.36 (1.19 - 1.56) | 1.27 (1.21 - 1.34) | 1.23 (1.17 - 1.29) | 1.15 (1.09 - 1.21) |
| 5                        | Ref                | Ref                | Ref                | Ref                | Ref                |

All models estimated using Cox Proportional Hazards regression and adjusted for age, race, gender (for any and colorectal cancer), marriage (ever, current), education (high school, college degree), and state (for all regions, and multi-state regions)



**Fig. 3** Attributable fraction (%; 95% CI) for adherence by race and cancer type



factors (except for alcohol use) [37]. These estimates have remained consistent based on recent 2014 BRFSS data showing that 65% of US adults were overweight/obese, 77% consumed less than five servings of fruits and vegetables per day, 49% did not engage in adequate physical activity, and 18% were current smokers. The lower levels of adherence to the risk factors observed among African-Americans compared with Whites suggests that socio-economic differences may play a major role [20, 38–40]. Multiple studies have observed significant associations between socio-economic status and increased risk of cancer [38]. Our results suggest that a possible conceptual pathway for racial disparities in cancer risk would involve race influencing socio-economic status, which in turn influences cancer risk through adherence to cancer related risk factors [40–43]. Thus, a realistic strategy to preventing cancer risk and reducing racial disparities in cancer could involve population specific public health strategies to improve adherence to these common risk factors. For instance, improving access to low-cost fresh fruits and vegetables in low-income communities of the US in general, and the South in particular given that only 24% of Southern adults in this study consumed recommended servings of fruits and vegetables; improving public safety and neighborhood walkability to encourage recreational physical activity especially in the Mid-West given that only 18% of Mid-Western adults in this study met recommended physical activity levels; better understanding of culture-specific tobacco cessation programs that are most likely to be effective, especially in the South where only 34% of adults in this study were non-smokers.

We observed an inverse association between adherence and prostate cancer risk. This is similar to findings from other studies [15, 44, 45], as well as an updated WCRF report [46] showing null or inverse associations between lifestyle risk factors except a probable association between body weight and prostate cancer. The association between smoking and prostate cancer may be due to potential detection bias, since smokers may be less health conscious and less likely to be diagnosed with cancer, or a yet unidentified genetic or molecular risk factor. The observed inverse association may also be due to competing risks; since prostate cancer is a slow, indolent cancer type, individuals at lower levels of adherence may die earlier due to other lifestyle associated factors e.g. cardiovascular diseases prior to prostate cancer diagnosis. Nevertheless, prostate cancer remains one of the most common cancers among men in the US, with markedly higher risk and aggressiveness among African-American men compared with Whites. Further research studies will be needed to identify etiological factors that may be modifiable to inform prostate cancer prevention efforts. The current analysis is strengthened by the

availability of large sample sizes for both African-Americans and Whites, a long duration of follow-up and lower likelihood of recall bias, and comprehensive set of study covariates for confounder adjustment. There were also a few limitations to this study. First, since NIH-AARP was a large cohort study of health status of older adults in general, there was less detailed information on some cancer-specific risk factors such as frequency of cancer screening such as mammography or PSA screening. Second, self-reported dietary patterns may be vulnerable to measurement error and may have led to an underestimation of the association with cancer risk, and examination of fruit and vegetable intake alone may have obscured race-specific dietary patterns that may be important for cancer risk. Finally, risk factors were assessed at baseline, however there is considerable interest in identifying the etiologic window over the entire life-course at which adherence is most important, i.e. early life, early adulthood or in older ages, which may further inform efforts to better target cancer prevention messages.

## Conclusion

In conclusion, for the major cancer types observed among US adults, lack of adherence to lifestyle related cancer risk factor guidelines significantly increased cancer risk, with up to 25% of new cancer cases attributable to low adherence. A larger proportion of breast cancer incidence in African-American women compared with Whites was attributable to examined lifestyle related risk factors, suggesting that there may be unique opportunities for targeted clinical and public health strategies to reduce the burden of breast cancer among older African-American adults.

## Additional file

**Additional file 1:** Participant flowchart for NIH\_AARP Diet and Health Study. The flow chart shows how many participants were in the cohort from start to finish. (PPTX 63 kb)

## Abbreviations

ACS: American Cancer Society; AICR: American Institute for Cancer Research; AR: Attributable risk; HR: Hazard ratio; NIH-AARP: National Institutes of Health-American Association of Retired Persons; PSA: Prostate specific antigen; RR: Risk ratio; WCRF: World Cancer Research Fund

## Acknowledgements

NA.

## Funding

This work was supported by the Deep South Resource Center for Minority Aging Research (RCMAR) Award Number 2P30AG031054 from the National Institute on Aging and the University of Alabama at Birmingham Faculty Development Grant Program. The content is solely the responsibility of the authors and does not necessarily represent the official views of the National Institute on Aging or the National Institutes of Health.

**Availability of data and materials**

The dataset and questionnaire utilized for this study are publicly available online at: <https://dietandhealth.cancer.gov/resource/>

**Authors' contributions**

TA designed research (project conception, development of overall research plan, and study oversight); TA and MP provided essential reagents or provided essential materials; HW, TA analyzed data or performed statistical analysis; TA, HW, MP wrote paper; TA, HW and MP had primary responsibility for final content; All authors have read and approved the final version of this manuscript.

**Authors' information**

NA.

**Ethics approval and consent to participate**

Informed consent was obtained from all study participants for the NIH-AARP study and this study was approved by the University of Alabama at Birmingham Institutional Review Board (Protocol #: E150623007).

**Consent for publication**

NA.

**Competing interests**

The authors declare that they have no competing interests.

**Publisher's Note**

Springer Nature remains neutral with regard to jurisdictional claims in published maps and institutional affiliations.

**Author details**

<sup>1</sup>Department of Epidemiology, University of Alabama at Birmingham, Birmingham, AL, USA. <sup>2</sup>Comprehensive Cancer Center, University of Alabama at Birmingham, Birmingham, AL, USA. <sup>3</sup>Department of Epidemiology, University of Kentucky, Lexington, KY 40504, USA. <sup>4</sup>Division of Preventive Medicine, University of Alabama at Birmingham, Birmingham, AL, USA.

Received: 5 January 2017 Accepted: 16 August 2017

Published online: 30 August 2017

**References**

- ACS. Cancer facts & figures: American Cancer Society; 2016.
- Rebbeck TR, Haas GP. Temporal trends and racial disparities in global prostate cancer prevalence. *Can J Urol*. 2014;21(5):7496–506.
- Laiyemo AO. Reducing racial disparity in colorectal cancer burden. *Dig Dis Sci*. 2014;59(9):2025–7. doi:10.1007/s10620-014-3238-8.
- Palmer JR, Viscidi E, Troester MA, Hong CC, Schedin P, Bethea TN, Bandera EV, Borges V, McKinnon C, Haiman CA, et al. Parity, lactation, and breast cancer subtypes in African American women: results from the AMBER consortium. *J Natl Cancer Inst*. 2014;106(10). doi:10.1093/jnci/dju237.
- Carey LA, Perou CM, Livasy CA, Dressler LG, Cowan D, Conway K, Karaca G, Troester MA, Tse CK, Edmiston S, et al. Race, breast cancer subtypes, and survival in the Carolina breast cancer study. *JAMA*. 2006;295(21):2492–502. doi:10.1001/jama.295.21.2492.
- Gebreab SY, Davis SK, Symanzik J, Mensah GA, Gibbons GH, Diez-Roux AV. Geographic variations in cardiovascular health in the United States: contributions of state- and individual-level factors. *J Am Heart Assoc*. 2015;4(6):e001673. doi:10.1161/JAHA.114.001673.
- Ferdinand KC, Rodriguez F, Nasser SA, Caballero AE, Puckrein GA, Zangeneh F, Mansour M, Foody JM, Pemu PE, Ofili EO. Cardiorenal metabolic syndrome and cardiometabolic risks in minority populations. *Cardiorenal Med*. 2014;4(1):1–11. doi:10.1159/000357236.
- Ford ES, Mokdad AH, Giles WH, Galuska DA, Serdula MK. Geographic variation in the prevalence of obesity, diabetes, and obesity-related behaviors. *Obes Res*. 2005;13(1):118–22. doi:10.1038/oby.2005.15.
- Ogden CL, Carroll MD, Kit BK, Flegal KM. Prevalence of childhood and adult obesity in the United States, 2011–2012. *JAMA*. 2014;311(8):806–14. doi:10.1001/jama.2014.732.
- Vasquez E, Shaw BA, Gensburg L, Okorodudu D, Corsino L. Racial and ethnic differences in physical activity and bone density: National Health and nutrition examination survey, 2007–2008. *Prev Chronic Dis*. 2013;10:E216. doi:10.5888/pcd10.130183.
- Colditz GA, Bohlke K. Priorities for the primary prevention of breast cancer. *CA Cancer J Clin*. 2014;64(3):186–94. doi:10.3322/caac.21225.
- Aune D, Chan DS, Vieira AR, Navarro Rosenblatt DA, Vieira R, Greenwood DC, Kampman E, Norat T. Red and processed meat intake and risk of colorectal adenomas: a systematic review and meta-analysis of epidemiological studies. *Cancer Causes Control*. 2013;24(4):611–27. doi:10.1007/s10552-012-0139-z.
- Renahan AG, Flood A, Adams KF, Olden M, Hollenbeck AR, Cross AJ, Leitzmann MF. Body mass index at different adult ages, weight change, and colorectal cancer risk in the National Institutes of Health-AARP cohort. *Am J Epidemiol*. 2012;176(12):1130–40. doi:10.1093/aje/kws192.
- Di Sebastiano KM, Mourtzakis M. The role of dietary fat throughout the prostate cancer trajectory. *Nutrients*. 2014;6(12):6095–109. doi:10.3390/nu6126095.
- Lund Nilssen TI, Johnsen R, Vatten LJ. Socio-economic and lifestyle factors associated with the risk of prostate cancer. *Br J Cancer*. 2000;82(7):1358–63. doi:10.1054/bjoc.1999.1105.
- Ferrucci LM, Sinha R, Ward MH, Graubard BI, Hollenbeck AR, Kilfoy BA, Schatzkin A, Michaud DS, Cross AJ. Meat and components of meat and the risk of bladder cancer in the NIH-AARP Diet and Health Study. *Cancer*. 2010;116(18):4345–53. PMID:20681011.
- Kushi LH, Doyle C, McCullough M, Rock CL, Demark-Wahnefried W, Bandera EV, Gapstur S, Patel AV, Andrews K, Gansler T, et al. American Cancer Society guidelines on nutrition and physical activity for cancer prevention: reducing the risk of cancer with healthy food choices and physical activity. *CA Cancer J Clin*. 2012;62(1):30–67. doi:10.3322/caac.20140.
- World Cancer Research Fund. Food, nutrition, physical activity, and the prevention of cancer: a global perspective. Washington, DC: World Cancer Research Fund/American Institute of Cancer Research; 2007.
- Hastert TA, Beresford SA, Patterson RE, Kristal AR, White E. Adherence to WCRF/AICR cancer prevention recommendations and risk of postmenopausal breast cancer. *Cancer Epidemiol Biomark Prev*. 2013;22(9):1498–508. doi:10.1158/1055-9965.epi-13-0210.
- Warren Andersen S, Blot WJ, Shu XO, Sonderman JS, Steinwandel MD, Hargreaves MK, Zheng W. Adherence to cancer prevention guidelines and cancer risk in low-income and African American populations. *Cancer Epidemiol Biomark Prev*. 2016; doi:10.1158/1055-9965.epi-15-1186.
- Kabat GC, Matthews CE, Kamensky V, Hollenbeck AR, Rohan TE. Adherence to cancer prevention guidelines and cancer incidence, cancer mortality, and total mortality: a prospective cohort study. *Am J Clin Nutr*. 2015;101(3):558–69. doi:10.3945/ajcn.114.094854.
- Thomson CA, McCullough ML, Wertheim BC, Chlebowski RT, Martinez ME, Stefanick ML, Rohan TE, Manson JE, Tindle HA, Ockene J, et al. Nutrition and physical activity cancer prevention guidelines, cancer risk, and mortality in the women's health initiative. *Cancer Prev Res (Phila)*. 2014;7(1):42–53. doi:10.1158/1940-6207.capr-13-0258.
- Brody JA. Changing health needs of the ageing population. *CIBA Found Symp*. 1988;134:208–20.
- Martin FL. Epigenetic influences in the aetiology of cancers arising from breast and prostate: a hypothesised transgenerational evolution in chromatin accessibility. *ISRN Oncol*. 2013;2013:624794. doi:10.1155/2013/624794.
- Keenan T, Moy B, Mroz EA, Ross K, Niemierko A, Rocco JW, Isakoff S, Ellis LW, Bardia A. Comparison of the genomic landscape between primary breast cancer in African American versus white women and the Association of Racial Differences with Tumor Recurrence. *J Clin Oncol*. 2015;33(31):3621–7. doi:10.1200/jco.2015.62.2126.
- Reeder-Hayes KE, Wheeler SB, Mayer DK. Health disparities across the breast cancer continuum. *Semin Oncol Nurs*. 2015;31(2):170–7. doi:10.1016/j.soncn.2015.02.005.
- Li CI, Malone KE, Daling JR. Differences in breast cancer stage, treatment, and survival by race and ethnicity. *Arch Intern Med*. 2003;163(1):49–56.
- Brenner DR, Brockton NT, Kotsopoulos J, Cotterchio M, Boucher BA, Courneya KS, et al. Breast cancer survival among young women: a review of the role of modifiable lifestyle factors. *Cancer Causes Control*. 2016;27(4):459–72. doi:10.1007/s10552-016-0726-5.
- Cohen DA, Sturm R, Scott M, Farley TA, Bluthenthal R. Not enough fruit and vegetables or too many cookies, candies, salty snacks, and soft drinks? *Public Health Rep*. 2010;125(1):88–95.
- Hauner H. Managing type 2 diabetes mellitus in patients with obesity. *Treat Endocrinol*. 2004;3(4):223–32.
- Toro AL, Costantino NS, Shriver CD, Ellsworth DL, Ellsworth RE. Effect of obesity on molecular characteristics of invasive breast tumors: gene expression

- analysis in a large cohort of female patients. *BMC Obesity*. 2016;3:22. doi:10.1186/s40608-016-0103-7.
32. Nimptsch K, Pischon T. Body fatness, related biomarkers and cancer risk: an epidemiological perspective. *Hormone Mol Biol Clin Inv*. 2015;22(2):39–51. doi:10.1515/hmbci-2014-0043.
  33. Gunter MJ, Wang T, Cushman M, Xue X, Wassertheil-Smoller S, Strickler HD, Rohan TE, Manson JE, McTiernan A, Kaplan RC, et al. Circulating Adipokines and Inflammatory Markers and Postmenopausal Breast Cancer Risk. *J Natl Cancer Inst*. 2015;107:9. doi:10.1093/jnci/djv169.
  34. Rodriguez A, Chawla K, Umoh NA, Cousins VM, Ketegou A, Reddy MG, AlRubaiee M, Haddad GE, Burke MW. Alcohol and apoptosis: friends or foes? *Biomol Ther*. 2015;5(4):3193–203. doi:10.3390/biom5043193.
  35. Key TJ, Reeves GK. Alcohol, diet, and risk of breast cancer. *BMJ*. 2016;353:i2503. doi:10.1136/bmj.i2503.
  36. Baylin SB, Jones PA. Epigenetic determinants of cancer. *Cold Spring Harb Perspect Biol*. 2016; doi:10.1101/cshperspect.a019505.
  37. Song M, Giovannucci E. Preventable incidence and mortality of carcinoma associated with lifestyle factors among white adults in the United States. *JAMA Oncol*. 2016; doi:10.1001/jamaoncol.2016.0843.
  38. Akinyemiju TF, McDonald JA, Tsui J, Greenlee H. Adherence to cancer prevention guidelines in 18 African countries. *PLoS One*. 2014;9(8):e105209. doi:10.1371/journal.pone.0105209.
  39. Warren Andersen S, Zheng W, Sonderman J, Shu XO, Matthews CE, Yu D, Steinwandel M, McLaughlin JK, Hargreaves MK, Blot WJ. Combined impact of health behaviors on mortality in low-income Americans. *Am J Prev Med*. 2016; doi:10.1016/j.amepre.2016.03.018.
  40. Williams DR, Mohammed SA, Shields AE. Understanding and effectively addressing breast cancer in African American women: unpacking the social context. *Cancer*. 2016; doi:10.1002/cncr.29935.
  41. Akinyemiju TF, Pisu M, Waterbor JW, Altekruse SF. Socioeconomic status and incidence of breast cancer by hormone receptor subtype. *SpringerPlus*. 2015;4:508. doi:10.1186/s40064-015-1282-2.
  42. Brewer KC, Peterson CE, Davis FG, Hoskins K, Pauls H, Joslin CE. The influence of neighborhood socioeconomic status and race on survival from ovarian cancer: a population-based analysis of Cook County, Illinois. *Ann Epidemiol*. 2015;25(8):556–63. doi:10.1016/j.annepidem.2015.03.021.
  43. Roseland ME, Pressler ME, Lamerato LE, Krajenta R, Ruterbusch JJ, Booza JC, Schwartz K, Simon MS. Racial differences in breast cancer survival in a large urban integrated health system. *Cancer*. 2015;121(20):3668–75. doi:10.1002/cncr.29523.
  44. Alvarez-Cubero MJ, Pascual-Geler M, Rivas A, Martinez-Gonzalez LJ, Saiz M, Lorente JA, Cozar JM. Lifestyle and dietary factors in relation to prostate cancer risk. *Int J Food Sci Nutr*. 2015;66(7):805–10. doi:10.3109/09637486.2015.1077786.
  45. Park SY, Haiman CA, Cheng I, Park SL, Wilkens LR, Kolonel LN, Le Marchand L, Henderson BE. Racial/ethnic differences in lifestyle-related factors and prostate cancer risk: the multiethnic cohort study. *Cancer Causes Control*. 2015;26(10):1507–15. doi:10.1007/s10552-015-0644-y.
  46. World Cancer Research Fund. Continuous update project findings and reports-prostate cancer. London: World Cancer Research Fund International; 2014.

Submit your next manuscript to BioMed Central  
and we will help you at every step:

- We accept pre-submission inquiries
- Our selector tool helps you to find the most relevant journal
- We provide round the clock customer support
- Convenient online submission
- Thorough peer review
- Inclusion in PubMed and all major indexing services
- Maximum visibility for your research

Submit your manuscript at  
[www.biomedcentral.com/submit](http://www.biomedcentral.com/submit)

