

RESEARCH

Open Access



The natural history of primary progressive multiple sclerosis: insights from the German NeuroTransData registry

Stefan Braune^{1*}, Sandra Bluemich², Carola Bruns², Petra Dirks³, Jeanette Hoffmann², Yanic Heer⁴, Erwan Muros-Le Rouzic³, Arnfin Bergmann¹ and NTD Study Group

Abstract

Background Primary progressive multiple sclerosis (PPMS) is characterised by gradual worsening of disability from symptom onset. Knowledge about the natural course of PPMS remains limited.

Methods PPMS patients from the German NeuroTransData (NTD) MS registry with data from 56 outpatient practices were employed for retrospective cross-sectional and longitudinal analyses. The cross-sectional analysis included a contemporary PPMS cohort with a documented visit within the last 2 years before index date (1 Jan 2021). The longitudinal analysis included a disease modifying therapy (DMT)-naïve population and focused on the evolution of expanded disability status scale (EDSS) from the first available assessment at or after diagnosis within the NTD registry to index date. Outcome measures were estimated median time from first EDSS assessment to first 24-week confirmed EDSS ≥ 4 and ≥ 7 . Besides EDSS change, the proportion of patients on disability pension were described over time.

Results The cross-sectional analysis included 481 PPMS patients (59.9% female, mean [standard deviation, SD] age 60.5 [11.5] years, mean [SD] EDSS 4.9 [2.1]). Estimated median time from first EDSS assessment after diagnosis to reach 24-week confirmed EDSS ≥ 4 for DMT-naïve patients was 6.9 years. Median time to EDSS ≥ 7 was 9.7 years for 25% of the population. Over a decade mean (SD) EDSS scores increased from 4.6 (2.1) to 5.7 (2.0); the proportion of patients on disability pension increased from 18.9% to 33.3%.

Conclusions This study provides first insights into the German NTD real-world cohort of PPMS patients. Findings confirm the steadily deteriorating course of PPMS accompanied by increasingly limited quality of life.

Keywords Primary progressive multiple sclerosis, Natural history, Retrospective study, Cohort studies, Quality of life

Introduction

Multiple sclerosis (MS) is a chronic inflammatory disease of the central nervous system, affecting approximately over 700,000 people in Europe and more than 2.5 million worldwide [1]. Most patients have a relapsing course of MS at onset characterised by relapses and remissions of neurological symptoms, which can be followed by a secondary progressive phase. However, in about 10–15% of patients the disease course is steadily progressing from the start, without or with occasional relapses [2, 3]. While the relapsing–remitting MS (RRMS) disease

*Correspondence:

Stefan Braune
sbraune@neurotransdata.com

¹ NeuroTransData, Neuburg an der Donau, Germany

² Roche Pharma AG, Grenzach-Wyhlen, Germany

³ F. Hoffmann-La Roche Ltd, Basel, Switzerland

⁴ PricewaterhouseCoopers (PwC), Zurich, Switzerland



© The Author(s) 2023. **Open Access** This article is licensed under a Creative Commons Attribution 4.0 International License, which permits use, sharing, adaptation, distribution and reproduction in any medium or format, as long as you give appropriate credit to the original author(s) and the source, provide a link to the Creative Commons licence, and indicate if changes were made. The images or other third party material in this article are included in the article's Creative Commons licence, unless indicated otherwise in a credit line to the material. If material is not included in the article's Creative Commons licence and your intended use is not permitted by statutory regulation or exceeds the permitted use, you will need to obtain permission directly from the copyright holder. To view a copy of this licence, visit <http://creativecommons.org/licenses/by/4.0/>. The Creative Commons Public Domain Dedication waiver (<http://creativecommons.org/publicdomain/zero/1.0/>) applies to the data made available in this article, unless otherwise stated in a credit line to the data.

course shows a female preponderance, females and males are equally affected by primary progressive MS (PPMS) [2]. Median symptom onset in people with PPMS occurs at the age of 40 years, about 10 years later than in RRMS [4]. Clinical symptoms at onset of PPMS include gait difficulties due to muscle weakness, spasticity, and balance impairments, as well as disturbance in fine motor movements and sphincter control [5]. Unlike RRMS, treating the progressing forms of MS remains a challenge with limited options of approved disease modifying therapies (DMTs). Ocrelizumab, a recombinant humanised monoclonal antibody that selectively targets CD20-expressing B cells, is currently the only approved medication for PPMS. Approval was based on results from the randomised, double-blind, placebo-controlled ORATORIO trial [6].

Due to the low proportion of MS patients affected with PPMS, there are few real-world cohorts with sufficiently large numbers of patients to allow a representative investigation of the natural history of PPMS. Relevant data remains limited and heterogeneous on patient characteristics and trajectories in disability over the long-term course of PPMS. Time estimates to reach disability milestones, reflecting a severely limited ability to walk, from symptom onset differ greatly between studies, ranging from 3 to 8 years to reach the Expanded Disability Status Scale (EDSS) 4, for instance [7, 8]. Evaluating predictors of progression remains inconclusive and produced varying results between cohorts [7, 9, 10]. Using data from the German NeuroTransData (NTD) MS registry, we analysed baseline characteristics and disease course of PPMS patients in a real-world setting. We thereby aim to facilitate better understanding of the natural disease course of PPMS.

Methods

This observational cohort study [SG43202] was based on data from the German NTD MS registry. Data cut-off was 1 Jan 2021.

German NTD MS registry

The NTD is a Germany-wide network of neurologists and psychiatrists founded in 2008. Currently, the NTD network includes 164 specialists in 56 practices serving about 600,000 outpatients per year. Each practice is certified according to network-specific and ISO 9001 criteria. Compliance with these criteria is audited annually by an external certified audit organisation. The NTD MS registry is a disease specific database digitally capturing demographic, clinical history, and clinical variables from MS patients in a real-world setting. It currently includes about 25,000 patients with MS. All patients gave informed consent for participation and agreed to

any secondary use of their data. Standardised clinical assessments of functional system scores and expanded disability status scale (EDSS) calculation are performed by certified raters (<http://www.neurostatus.net/>). All personnel undergo regular training and both automatic and manually executed queries are implemented to ensure data quality. All data are pseudonymised and pooled to form the MS registry database [11].

The Institute for Medical Information Processing, Biometry and Epidemiology (Institut für medizinische Informationsverarbeitung, Biometrie und Epidemiologie) at the Ludwig Maximilian University in Munich, Germany, manages codes and acts as an external trust centre. Pooled data are stored on NTD servers and other NTD-controlled storage technology. The data acquisition protocol was approved by the ethical committee of the Bavarian Medical Board (Bayerische Landesärztekammer; 14 Jun 2012, No. 11144) and reapproved by the ethical committee of the Medical Board North-Rhine (Ärztekammer Nordrhein, 25 April 2017, ID 2017071). The study conforms to the World Medical Association Declaration of Helsinki as published on the website of the Journal of American Medical Association, the Guidelines for 'Guidelines for Good Pharmacoepidemiology.

Practices' GPP published by the International Society of Pharmacoepidemiology (ISPE) and the laws and regulations of Germany.

Patients

The analyses included PPMS patients diagnosed (for the first time or confirmatory) following common clinical practice and guidelines by a neurologist belonging to the NTD network.

Cross-sectional analysis

The cross-sectional analysis aimed at describing a contemporary PPMS population with the last visit ≤ 2 years before index date 1 Jan 2021. Patient characteristics were described, including demographics, age at onset and diagnosis of disease, disease duration, EDSS, treatment history with disease modifying therapies (DMTs) and supportive care. Health-related quality of life was assessed by the EQ-5D-5L, a widely used generic measure of health status consisting of a short descriptive system questionnaire and a visual analogue scale (EQ VAS). The descriptive system assesses health in five dimensions (mobility, self-care, usual activities, pain/discomfort, anxiety/depression), each of which has five levels of response (1 = no problems, 2 = slight problems, 3 = moderate problems, 4 = severe problems, 5 = extreme problems/unable to). This questionnaire provides a descriptive profile that can be used to generate a health state profile, whereby 11111 (no problems in any dimension) indicates the

best and 55555 (extreme problems in all dimensions) the worst health state. To derive a summary index score an appropriate value set is needed. A health state index score was calculated from individual health profiles using the German Value Set for the EQ-5D-5L as reference. The index score ranges from -0.661 (worst health state) to 1 (best health state) [12]. The EQ VAS assesses how the patient rates their perceived health from 0 (the worst imaginable health) to 100 (the best imaginable health) [13]. Written permission regarding the use of the EQ-5D-5L was obtained from the EuroQol Office.

Longitudinal analysis

All patients with a PPMS diagnosis and at least two EDSS scores (baseline EDSS < 4 for the time to event analysis to reach EDSS 4; or a baseline EDSS < 7 for the time to event analysis to reach EDSS 7) recorded were included. Patients receiving any DMT were censored in the longitudinal analysis at the time of the first DMT initiation in order to characterise the natural course of PPMS. Time to disability progression milestone of EDSS ≥ 4 (patients are fully ambulatory despite severe disability and able to walk without aid 500 m) and ≥ 7 (essentially restricted to wheelchair), both confirmed after ≥ 24 and ≥ 48 weeks, were investigated by time to event analysis (Kaplan Meier) and Cox proportional-hazards model. Subgroup analyses for the time to EDSS milestones included stratification by age (≤ 55 years versus > 55 years at time of diagnosis). A specific subgroup analysis applying the main inclusion criteria of the pivotal PPMS trial of ocrelizumab (ORATORIO trial) included patients with the following criteria: age 18 to 55 years, baseline EDSS in the NTD MS registry between 3.0 and 6.5, disease duration since onset of symptoms < 15 years if EDSS > 5 at first record in NTD MS registry or disease duration < 10 years if EDSS ≤ 5 at first record in NTD MS registry [6]. Median EDSS for each cohort at the beginning of the time to event analysis was calculated. To further examine the evolution of EDSS over time in DMT-naïve PPMS patients, EDSS scores recorded at successive points in time were plotted per year beginning with the first EDSS assessment recorded in the NTD registry at or after PPMS diagnosis and censoring upon DMT initiation. In case a patient had several EDSS assessments in one year, the arithmetic mean was used to determine the EDSS for that year. In addition, the proportion of patients on self-reported disability pension was evaluated over time. Disability pension can be granted to residents in Germany with reduced working capacity (< 6 h per day), independent of the cause, provided the applicant belonged to the insured group of persons of the statutory pension insurance for at least a period of five years before the onset of reduced working capacity.

Statistics

No formal sample size was pre-calculated. Data were analysed descriptively using R software version 3.6.0 (R Foundation for Statistical Computing, Vienna, Austria). For the health state index and EQ VAS scores, mean and standard deviation (SD) were calculated. Change in EDSS was represented in box plots of median EDSS per year, starting with the first EDSS visit. Kaplan–Meier estimation was used for time-to-event analyses and displayed as a survival function of event-free disease course. Median time to reach EDSS milestones and interquartile range (Q1; Q3) were reported. The time to EDSS ≥ 4 and ≥ 7 analyses excluded patients who already had EDSS ≥ 4 and ≥ 7 at their first EDSS assessment at or after diagnosis, respectively. For estimation of median time to milestones 4 and 7 generalised gamma functions were fitted to the corresponding survival curves [14]. The suitability of this parametric assumption was assessed by comparing estimates for the time to have events for 25% of the population, e.g. for the event to reach 24-week confirmed EDSS 7 (censored at any DMT). Patients were considered at-risk until the last assessment visit recorded prior to data cut-off or censored at time of death or at start of any DMT, whichever occurred first.

Results

Cross-sectional analysis

Out of 23,356 MS patients recorded in the registry at index date, 18,289 (78.3%) were diagnosed with RRMS, 1168 (5.0%) with PPMS, 3240 (13.9%) with SPMS and 659 (2.8%) were not further classified. Of 1168 PPMS patients, 481 patients had a documented visit within the last 2 years before index date (1 Jan 2021) and were included in the cross-sectional analysis. Patient characteristics are summarised in Table 1. Mean time between onset of MS symptoms and PPMS diagnosis recorded in the NTD network was 10.5 years, whereas mean time from onset of MS symptoms to cut-off date was 17.2 years. Mean time between first symptoms and first MS diagnosis was 3.2 years. Median EDSS was 5.0 (IQR 3.5–6.5; mean 4.9; SD 2.1). Among the EDSS subscores, the ambulatory system was affected most (median 3.0; mean 3.4), followed by pyramidal functions (median 3.0; mean 2.8) (Table 1). Before PPMS diagnosis was confirmed, 12.9% of patients had a prior RRMS diagnosis. At index date, 16.4% of patients had previously received off-label treatment with at least one DMT and 18.5% of patients were on treatment with an approved therapy. Mean (SD) EQ-5D-5L index score was 0.6 (0.3) and mean (SD) EQ VAS was 56.9 (22.3). The results of the categorical responses for the five EQ-5D-5L dimensions are summarised in Table 2. The dimensions mostly affected by

Table 1 Baseline characteristics (at index date^a)

Parameter	N=481
Females, n (%)	288 (59.9)
Age, mean (SD), years	
at index date ^a	60.5 (11.5)
at onset of disease (first symptoms)	43.3 (11.6)
at onset of disease (first MS diagnosis)	46.5 (11.4)
at PPMS diagnosis (confirmed ^b)	53.8 (10.8)
Disease duration, mean (SD), years	
since first MS symptoms	17.2 (10.8)
since PPMS diagnosis (confirmed ^b)	6.7 (4.9)
Time between confirmed diagnosis and EDSS assessment within the registry	0.1 (3.6)
Prior RRMS diagnosis, n (%)	62 (12.9)
Prior SPMS diagnosis, n (%)	7 (1.5)
EDSS, median (IQR); mean (SD) ^c	
Total score	5.0 (3.5–6.5); 4.9 (2.1)
Pyramidal functions	3.0 (2.0–4.0); 2.8 (1.5)
Cerebellar functions	1.0 (0.0–2.0); 1.4 (1.3)
Brainstem functions	0.0 (0.0–1.0); 0.6 (0.9)
Sensory functions	1.0 (0.0–2.0); 1.3 (1.3)
Sphincteric functions	1.0 (0.0–2.0); 1.2 (1.2)
Visual functions	0.0 (0.0–0.0); 0.3 (0.7)
Cerebral functions	1.0 (0.0–2.0); 1.1 (1.1)
Ambulation score	3.0 (0.0–6.0); 3.4 (3.2)
Time from last EDSS assessment to index date ^a , mean (SD), months	9.0 (6.8)
Current DMT Use, n (%)	
Approved DMT	89 (18.5)
Other DMT	41 (8.5)
Untreated	351 (73.0)
Use of pain medication, n (%)	58 (12.1)
Use of antidepressants, n (%) ^d	44 (9.1)
Non-medical support, n (%)	
Physiotherapy	273 (56.8)
Support from family	73 (15.2)
Outpatient care	22 (4.6)
Domestic help	139 (28.9)
Short-term care	1 (0.2)
Daycare	1 (0.2)
EQ5D index value, mean (SD)	0.6 (0.3)
EQVAS, mean (SD)	56.9 (22.3)
Time from last PRO to index date ^a , mean (SD), months	8.6 (6.5)

DMT disease modifying treatment, EDSS Expanded Disability Status Scale, IQR Interquartile range, MS Multiple sclerosis, PPMS Primary progressive multiple sclerosis, PRO Patient-reported outcome, RRMS Relapsing–remitting multiple sclerosis, SD Standard deviation, SPMS secondary progressive multiple sclerosis, VAS visual analogue scale

^a Index date: 1 Jan 2021

^b confirmed within the NTD registry

^c Last assessment, within 2 years from index date

^d selective serotonin reuptake inhibitors, tricyclic antidepressants, serotonin-norepinephrine reuptake inhibitors, mirtazapine, escitalopram, venlafaxine, noradrenergic and specific serotonergic antidepressants, amitriptyline, neuroleptics, sertraline

moderate to extreme problems were mobility (38.5%), followed by usual activities (30.8%) and pain/discomfort (28.4%). Patients reported lower levels of problems in the dimensions self-care and anxiety/depression. A total of 12.1% and 9.1% of patients received pain medications or antidepressants, respectively (Table 1).

Longitudinal analysis

First recorded EDSS visits occurred between 1989 and 2020. Mean time (SD) between PPMS diagnosis recorded in the NTD network and EDSS assessment within the registry was 0.12 years (3.64; $n=476$).

The course of EDSS over 10 years was marked by a deteriorating tendency. Mean EDSS at diagnosis or first recorded EDSS in the registry was 4.6 (SD 2.1; median 4.42; IQR 3.5–6.0; $n=765$) and it gradually increased to 5.7 (SD 2.0; median 6.5; IQR 4.0–7.3; $n=67$) within 10 years (Fig. 1). The proportion of patients on self-reported disability pension increased over time from 18.9% in year 1 to 33.3% in year 10 (Fig. 2).

A total of 372 patients met the inclusion for the time to EDSS ≥ 4 analysis with a baseline median EDSS 3.0. Estimated median time to reach 24-week confirmed EDSS ≥ 4 was 6.9 years (Q1: 2.4; Q3: not reached) (Fig. 3A). A total of 808 patients met the inclusion for the time to EDSS ≥ 7 analysis with a baseline median EDSS 4.0. The extrapolated median time to EDSS ≥ 7 was 16.3 years, however, only a small number of EDSS ≥ 7 events occurred ($n=69$). The estimated time for 25% of the population to reach EDSS ≥ 7 was 9.7 years (Fig. 3B). Time-to-event plots for 48-week confirmed EDSS milestones of ≥ 4 and ≥ 7 showed a similar course (Supplementary Figures S1 and S2).

Subgroup analyses of patients aged ≤ 55 years and > 55 years at time of diagnosis indicated no significant difference in the time to reach EDSS ≥ 4 ($p=0.91$) and ≥ 7 ($p=0.24$) (Fig. 4A and B). Median time to reach EDSS ≥ 4 was 6.8 (Q1: 2.3; Q3: not reached) and 6.9 years (Q1: 2.9; Q3: not reached) for patients ≤ 55 and > 55 years, respectively. Median time to EDSS ≥ 7 was not calculated due to the small number of events ($n=41$ and $n=28$, respectively). Estimated time for 25% of the population to reach EDSS ≥ 7 was 8.6 in patients ≤ 55 years and 9.7 years in patients > 55 years at time of diagnosis. Corresponding analyses were similar for 48-week confirmed EDSS milestones ≥ 4 and ≥ 7 (Supplementary Figures S3 and S4).

A subgroup of 84 or 191 patients also fulfilled the criteria corresponding to the inclusion criteria of the ORATORIO pivotal trial and were examined regarding time to EDSS ≥ 4 and ≥ 7 . In this cohort, the median time to reach EDSS ≥ 4 was 2.6 years (Q1: 1.3; Q3: not reached). Median time to EDSS ≥ 7 was not reached due to the

Table 2 Summary statistics including numbers of patients and proportions of categorical responses for the five EQ-5D dimensions

	Mobility n (%)	Self-care n (%)	Usual Activities n (%)	Pain/discomfort n (%)	Anxiety/depression n (%)
Level 1 (No problems)	38 (7.9)	110 (22.9)	54 (11.2)	55 (11.4)	107 (22.2)
Level 2 (Slight problems)	42 (8.7)	57 (11.9)	64 (13.3)	73 (15.2)	83 (17.3)
Level 3 (Moderate problems)	65 (13.5)	49 (10.2)	85 (17.7)	94 (19.5)	53 (11.0)
Level 4 (Severe problems)	85 (17.7)	34 (7.1)	45 (9.4)	40 (8.3)	18 (3.7)
Level 5 (Extreme problems/unable to do)	35 (7.3)	16 (3.3)	18 (3.7)	3 (0.6)	3 (0.6)
Missing	216 (44.9)	215 (44.7)	215 (44.7)	216 (44.9)	217 (45.1)
Total	481 (100)	481 (100)	481 (100)	481 (100)	481 (100)

small number of events ($n=7$). Corresponding analyses were consistent for 48-week confirmed EDSS ≥ 4 and ≥ 7 .

Discussion

This study provides first insights into the German NTD real-world cohort of PPMS outpatients to describe and thus, better understand the current PPMS population as well as the natural disease course of PPMS based on a national registry.

The NTD registry includes a large MS cohort with about 78, 14 and 5% of MS patients diagnosed with RRMS, SPMS and PPMS, respectively, which is in line with the distribution of MS phenotypes reported in

Germany whereas higher numbers have been reported internationally [15–18]. As of January 2021, PPMS patients had a mean age of 60.5 years, median EDSS was 5.0 (mean 4.9 (2.1)) and about 60% were female. Clinical characteristics of the underlying study cohort such as mean age at disease onset (43.3 years) and limited walking ability as a predominant MS related symptom were representative of the PPMS population [4, 5]. The reported time delay of 3 years between presentation of first symptoms and MS diagnosis (approx. 13% with the initial diagnosis of RRMS) not only reflects the well-known challenges in a confirmed PPMS diagnosis [19], but also indicates an initial disease course with only slow

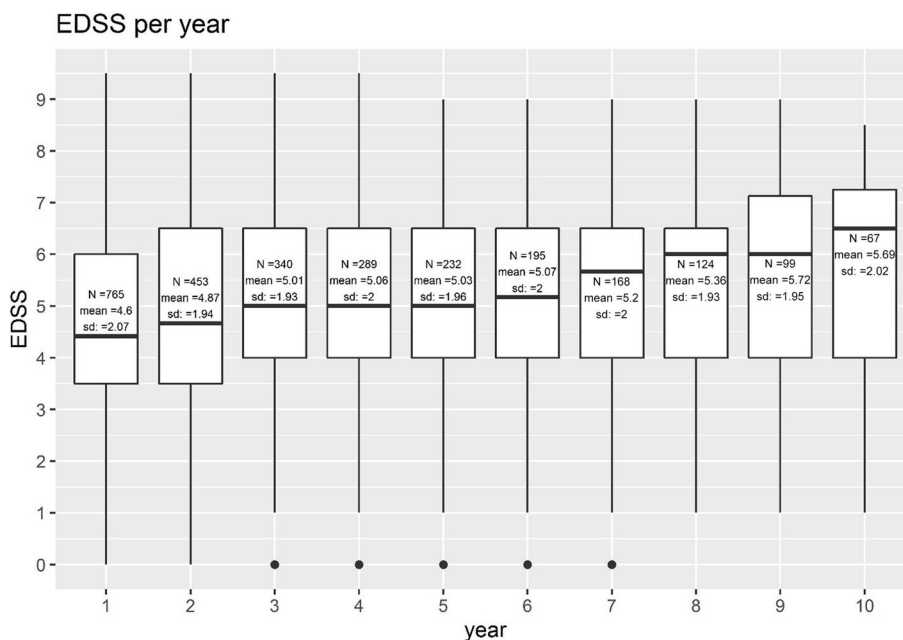


Fig. 1 Box plot showing median EDSS of DMT-naïve PPMS patients per year, starting with the first EDSS visit

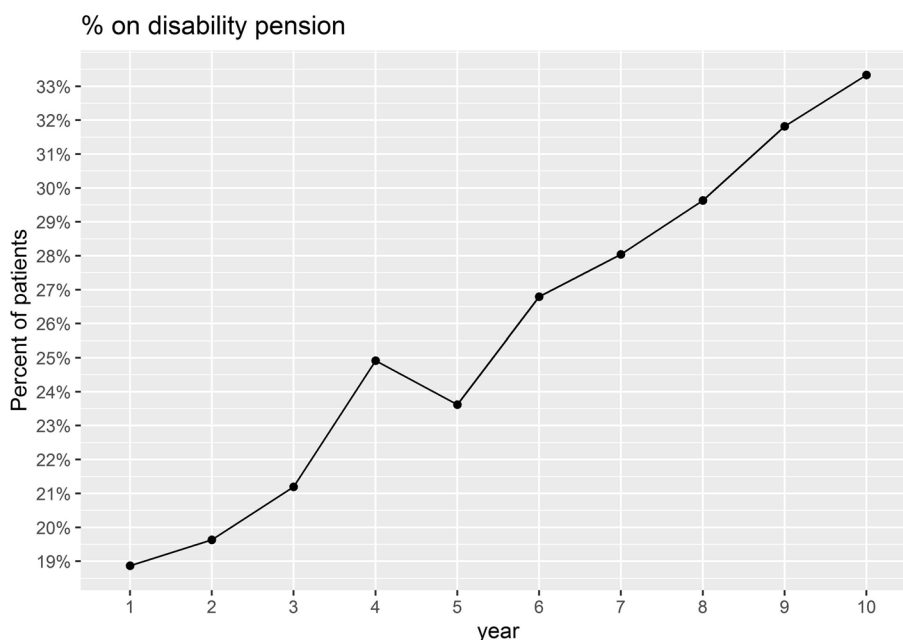


Fig. 2 Proportion of PPMS patients without DMT on disability pension over time relative to the index 01.01.2021 (index date)

progression in the present population [20]. Nevertheless, health related quality of life assessed by the EQ-5D-5L was lower (index 0.6, EQ VAS 56.9) than in the German general elderly population over 65 years of age (index 0.8, EQ VAS 73.2) [21]. Over a maximum observation period of 14 years after first diagnosis, patients have reached a high level of disability and 25% of patients reported severe to extreme problems with mobility.

The disease modifying treatment of PPMS remains a major challenge; therapeutic options are limited with only one approved DMT to date. While almost two thirds of PPMS patients enrolled in the NTD registry were without any DMT, 18.5% received the approved medication ocrelizumab. This seemingly high number of untreated patients might be due to the increased mean age of the cohort at confirmed diagnosis within the registry (53.8). Although the European summary of product characteristics does not prescribe an age limit for the use of ocrelizumab in early PPMS, the pivotal trials only included patients up to the age of 55 years and the interdisciplinary network “Kompetenznetz Multiple Sklerose” (KKNMS) recommends a careful benefit-risk assessment before initiating treatment with ocrelizumab especially for patients with older age [22]. Additionally, the therapeutic indication of ocrelizumab in early PPMS requires MRI evidence of inflammatory activity which assessment is not standardised in clinical practice. Therefore, it is challenging to obtain consistent data on MRI activity needed for treatment decisions. Reported off-label use of immunomodulatory treatments in 8.5% of patients

again highlights the unmet medical need and has also been described in a high proportion of PPMS patients enrolled in the German ocrelizumab compassionate use program [23, 24]. Symptomatic therapies represent an essential component of the medical care for patients with PPMS. In line with data from the German DMSG registry, pain and depression were among the most common concomitant symptoms treated with medications [25]. Furthermore, a large proportion of the NTD population is dependent on non-medical support such as physiotherapy and domestic help. Informal care gains in importance as well with an increasing degree of disability [26]. Although a Europe-wide data collection in MS patients indicates that 46% of patients with MS receive support from family members [27] this has only been reported by 15.2% of PPMS patients in the NTD registry.

With the growing efforts to provide PPMS patients with improved or new treatment options [28, 29], a better understanding of the natural disease course is needed to be informed about long-term trajectories and potential therapeutic effects. In the present study the time to reach major EDSS milestones (EDSS 4 and 7), which are associated with a severe impairment of mobility, have been analysed. The time from initial or confirmed PPMS diagnosis in the physician network of NTD to EDSS ≥ 4 was about 7 years. Considering the time span of about 10 years between symptom onset and confirmed diagnosis, disease progression was less rapid than in comparable Canadian and European populations in which a time between 3 and 8 years was described from first symptom

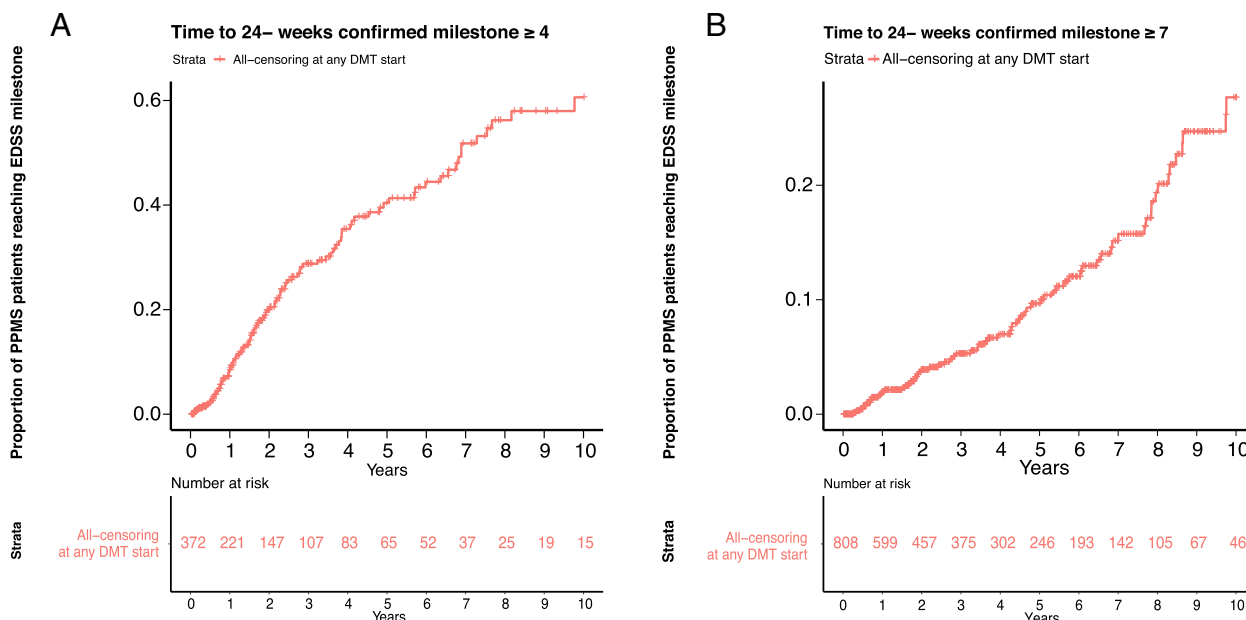


Fig. 3 Time from first EDSS assessment at or after diagnosis to 24-week confirmed EDSS score of ≥ 4 (A) and ≥ 7 (B) Kaplan–Meier survival curve for all DMT-naïve PPMS patients. Patients were censored at start of any DMT. Patients were considered at-risk until the last assessment visit recorded prior to data cut-off or censored at time of death or at start of any DMT whichever occurred first

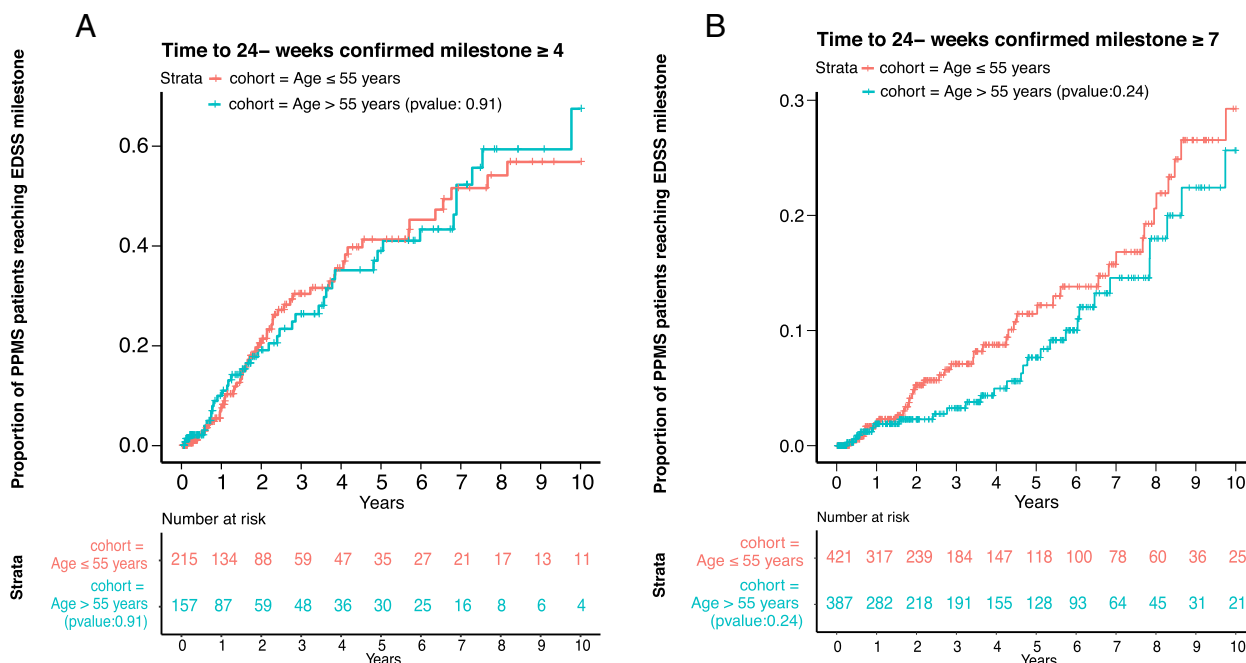


Fig. 4 Time from first EDSS assessment at or after diagnosis to 24-week confirmed EDSS score of ≥ 4 (A) and ≥ 7 (B) Kaplan–Meier survival curve for subgroups of all DMT-naïve PPMS patients ≤ 55 and > 55 years at the time of PPMS diagnosis. Patients were censored at start of any DMT. Patients were considered at-risk until the last assessment visit recorded prior to data cut-off or censored at time of death or at start of any DMT whichever occurred first

to reach EDSS ≥ 4 [7, 8, 30]. However, 20% of the patients have an EDSS of ≥ 4 at their first visit, which could imply a bias towards a population with a slowly progressing disease course in this analysis. Reaching EDSS ≥ 7 and the accompanying need for a wheelchair represented a rare event in the overall analysed cohort, only very few patients ($n=69$) reached this disability status and the extrapolation of data resulted in an estimated time span of about 16 years from confirmed PPMS diagnosis to EDSS ≥ 7 . To gain more robust data, the lower quartile was assessed, which was 9.7 years from confirmed diagnosis for 25% of the population to reach EDSS ≥ 7 . Again the increase in disability over time until wheelchair use suggests a slower disease progression in the NTD population than described in other cohorts [7, 20]. Although previous studies reported age at disease onset as a prognostic factor for long-term disability in PPMS [8, 10, 30, 31], age at diagnosis did not influence progression in the German NTD cohort.

Whether the disease course of a real-world cohort differs from a selected clinical trial population was investigated using a subgroup fulfilling the main inclusion criteria of the ocrelizumab pivotal trial in PPMS (ORATORIO) [6]. With a median time of 2.6 years from confirmed diagnosis to reach EDSS ≥ 4 versus 7 years in the total population this subgroup seems to be affected by a more severe disease course. However, due to low patient numbers fulfilling the respective criteria and a short follow-up, these results should be interpreted cautiously.

The consideration of mean EDSS change over a 10-year follow-up showed a moderate but clinically meaningful increase of about 1 EDSS point from 4.6 to 5.7, which appears noticeably lower than the predicted average EDSS increase per year of 0.24 calculated on the basis of pooled individual case data from two German databases [32]. Despite the less pronounced increase in disability measured by the EDSS, the proportion of patients on disability pension increased steadily from 18.9% to 33.3%. This is considerably higher than the proportion of 2% in the German general population [33, 34] and exceeds the proportion reported for MS patients in the German MS registry (22.6%) [25]. However, it should be noted that data from the German MS registry reflects early retirement in MS patients of all phenotypes and not PPMS exclusively. Thus, the higher degree of disability, the older age as well as the progressive phenotype of MS in the analysed population (three factors that are associated with reduced work capacity) must be taken into account when interpreting the data [15, 25, 35].

Due to the real world nature of the NTD MS registry and the secondary data use approach in our analysis, several limitations to the results and their interpretation should be considered. Despite inclusion of outpatients

across Germany at all stages of the disease, the patient population from the NTD registry can be prone to selection bias. As these data are captured from outpatient care neurological services only, generalizability of our study findings might be limited. Still, comparison to other German and international data, the mean EDSS of our cohort does not differ substantially. As of Jan 2021, the median EDSS score was 5.0, the baseline (first) mean EDSS for the longitudinal analysis was 4.6. As of September 2022, the German Multiple Sclerosis Society (DMSG) included 2647 PPMS patients from a variety of care facilities with a median EDSS score of 5.5 [36]. Other studies investigating the natural history of PPMS conducted across mainly inpatient MS services different types of MS care centres from the international MSBase registry (24 countries including national MS registries) [20], or in the UK (tertiary referral service) [8] reported baseline median EDSS of 4.0 and 5.8, respectively. Data collection under real-world conditions reflects clinical practice and the observational design of the NTD MS registry with assessments not systematically performed at each visit as well as variability of visit schedules results in incomplete datasets especially in the long-term follow-up. However, a sensitivity analysis between two cohorts with a visit frequency under 150 days vs above 150 days did not reveal any difference. Practical problems inherent to collecting long-term data include patient loss to follow-up, especially for migrating outward from the study area. Consequently, the mean follow-up period of 4.8 years may have been too short to provide robust data on the long-term disease course up to massive physical limitations evident by the need of a wheelchair (EDSS ≥ 7). The precise recording of disease progression in MS patients remains challenging and although the EDSS is considered as the gold standard regarding its assessment, it has well described limitations [37]. Next to a high inter- and intra-rater variability, the EDSS milestones are mainly defined by mobility restrictions ignoring other MS related symptoms that have a strong influence on patient's quality of life, such as fatigue or impaired upper limb and cognitive functions [37]. Aware of this limitation, additional or composite endpoints are increasingly chosen in clinical trials to allow for a comprehensive evaluation of functional impairments [6, 38–42]. However, a similarly detailed assessment of disease progression is often not feasible in clinical practice.

In summary, this study provides a comprehensive overview on clinical characteristics and the natural history of PPMS patients included in a large contemporary cohort from the German NTD registry. Although the overall population has shown a rather slow progressing course of disease, the data collected underline

the significant impact on patients' everyday life which is reflected in the reduced quality of life and impaired ability to work reported by PPMS patients. There is still a high unmet medical need for disease modifying therapies in progressive MS and despite of limitations the collection of real-world data contributes to a better understanding of long-term disease progression and possible impact of emerging therapies.

Supplementary Information

The online version contains supplementary material available at <https://doi.org/10.1186/s12883-023-03273-9>.

Additional file 1: Figure S1. Time from first EDSS assessment at or after diagnosis to 48-week confirmed EDSS score of ≥ 4 at or after diagnosis Kaplan-Meier survival curve for DMT-naïve PPMS patients. Patients were censored at start of any DMT. Patients were considered at-risk until the last assessment visit recorded prior to data cut-off or censored at time of death or at start of any DMT whichever occurred first. **Figure S2.** Time from first EDSS assessment at or after diagnosis to 48-week confirmed EDSS score of ≥ 7 Kaplan-Meier survival curve for DMT-naïve PPMS patients. Patients were censored at start of any DMT. Patients were considered at-risk until the last assessment visit recorded prior to data cut-off or censored at time of death or at start of any DMT whichever occurred first. **Figure S3.** Time from first EDSS assessment at or after diagnosis to 48-week confirmed EDSS score of ≥ 4 Kaplan-Meier survival curve for subgroups of DMT naïve PPMS patients ≤ 55 and >55 years at the time of PPMS diagnosis. Patients were censored at start of any DMT. Patients were considered at-risk until the last assessment visit recorded prior to data cut-off or censored at time of death or at start of any DMT whichever occurred first. **Figure S4.** Time from first EDSS assessment at or after diagnosis to 48-week confirmed EDSS score of ≥ 7 Kaplan-Meier survival curve for subgroups of DMT-naïve PPMS patients ≤ 55 and >55 years at the time of PPMS diagnosis. Patients were censored at start of any DMT. Patients were considered at-risk until the last assessment visit recorded prior to data cut-off or censored at time of death or at start of any DMT whichever occurred first.

Acknowledgements

Writing assistance was provided by Dr. Petra Jöstingmeyer (medunit GmbH, Germany). Roche Pharma AG provided funding for writing assistance in the development of this article.

NTD Study Group

First Name	Surname	Affiliation	City	Country
Walter	Albrecht ¹	¹ NeuroTrans-Data	Neuburg an der Donau	Germany
Arnfin	Bergmann ¹	¹ NeuroTrans-Data	Neuburg an der Donau	Germany
Felix	Bischof ¹	¹ NeuroTrans-Data	Neuburg an der Donau	Germany
Foroogh	Bittkau ¹	¹ NeuroTrans-Data	Neuburg an der Donau	Germany
Simon	Bittkau ¹	¹ NeuroTrans-Data	Neuburg an der Donau	Germany
Kin-Arno	Bohr ¹	¹ NeuroTrans-Data	Neuburg an der Donau	Germany
Bettina	Borries, von ¹	¹ NeuroTrans-Data	Neuburg an der Donau	Germany
Stefan	Braune ¹	¹ NeuroTrans-Data	Neuburg an der Donau	Germany

First Name	Surname	Affiliation	City	Country
Bernd	Brockmeier ¹	¹ NeuroTrans-Data	Neuburg an der Donau	Germany
Dagmar	Brummer ¹	¹ NeuroTrans-Data	Neuburg an der Donau	Germany
Bernhard	Bühler ¹	¹ NeuroTrans-Data	Neuburg an der Donau	Germany
Wolfgang	Butz ¹	¹ NeuroTrans-Data	Neuburg an der Donau	Germany
Lukas	Cepek ¹	¹ NeuroTrans-Data	Neuburg an der Donau	Germany
Lars	Claassen ¹	¹ NeuroTrans-Data	Neuburg an der Donau	Germany
Jürgen	Dee ¹	¹ NeuroTrans-Data	Neuburg an der Donau	Germany
Lienhard	Dieterle ¹	¹ NeuroTrans-Data	Neuburg an der Donau	Germany
Eckehard	Drees ¹	¹ NeuroTrans-Data	Neuburg an der Donau	Germany
Christoph	Engelmann ¹	¹ NeuroTrans-Data	Neuburg an der Donau	Germany
Michael	Ernst ¹	¹ NeuroTrans-Data	Neuburg an der Donau	Germany
Oliver	Fasold ¹	¹ NeuroTrans-Data	Neuburg an der Donau	Germany
Johannes	Fischer ¹	¹ NeuroTrans-Data	Neuburg an der Donau	Germany
Michael	Flach ¹	¹ NeuroTrans-Data	Neuburg an der Donau	Germany
Robert	Fleischer ¹	¹ NeuroTrans-Data	Neuburg an der Donau	Germany
Lea	Friedrich ¹	¹ NeuroTrans-Data	Neuburg an der Donau	Germany
Anke	Friedrich ¹	¹ NeuroTrans-Data	Neuburg an der Donau	Germany
Michael	Fritzinger ¹	¹ NeuroTrans-Data	Neuburg an der Donau	Germany
Klaus	Gehring ¹	¹ NeuroTrans-Data	Neuburg an der Donau	Germany
Stephanie	Gierer ¹	¹ NeuroTrans-Data	Neuburg an der Donau	Germany
Stephan	Gierer ¹	¹ NeuroTrans-Data	Neuburg an der Donau	Germany
Jens	Gößling ¹	¹ NeuroTrans-Data	Neuburg an der Donau	Germany
Eva	Grips ¹	¹ NeuroTrans-Data	Neuburg an der Donau	Germany
Andreas Hans-Joachim	Haldenwanger ¹	¹ NeuroTrans-Data	Neuburg an der Donau	Germany
Andreas	Harth ¹	¹ NeuroTrans-Data	Neuburg an der Donau	Germany
Rolf	Hartmann ¹	¹ NeuroTrans-Data	Neuburg an der Donau	Germany
Roland	Helm ¹	¹ NeuroTrans-Data	Neuburg an der Donau	Germany
Heinz-Peter	Herbst ¹	¹ NeuroTrans-Data	Neuburg an der Donau	Germany
Christian	Hofer ¹	¹ NeuroTrans-Data	Neuburg an der Donau	Germany

First Name	Surname	Affiliation	City	Country	First Name	Surname	Affiliation	City	Country
Werner Erwin	Hofmann ¹	¹ NeuroTrans-Data	Neuburg an der Donau	Germany	Said	Masri ¹	¹ NeuroTrans-Data	Neuburg an der Donau	Germany
Alexander	Hoge ¹	¹ NeuroTrans-Data	Neuburg an der Donau	Germany	Christof	Moser ¹	¹ NeuroTrans-Data	Neuburg an der Donau	Germany
Sibylla	Hummel ¹	¹ NeuroTrans-Data	Neuburg an der Donau	Germany	Clemens	Neusch ¹	¹ NeuroTrans-Data	Neuburg an der Donau	Germany
Benno	Ikenberg ¹	¹ NeuroTrans-Data	Neuburg an der Donau	Germany	Julius	Niemann ¹	¹ NeuroTrans-Data	Neuburg an der Donau	Germany
Heike	Israel-Willner ¹	¹ NeuroTrans-Data	Neuburg an der Donau	Germany	Tilman	Paschke ¹	¹ NeuroTrans-Data	Neuburg an der Donau	Germany
Ralf	Jankovits ¹	¹ NeuroTrans-Data	Neuburg an der Donau	Germany	Anna Sybilla	Peikert ¹	¹ NeuroTrans-Data	Neuburg an der Donau	Germany
Boris-Alexander	Kallmann ¹	¹ NeuroTrans-Data	Neuburg an der Donau	Germany	Andreas	Peikert ¹	¹ NeuroTrans-Data	Neuburg an der Donau	Germany
Ulrich	Kausch ¹	¹ NeuroTrans-Data	Neuburg an der Donau	Germany	Henning	Peters ¹	¹ NeuroTrans-Data	Neuburg an der Donau	Germany
Marc	Keppler ¹	¹ NeuroTrans-Data	Neuburg an der Donau	Germany	Robert	Pfister ¹	¹ NeuroTrans-Data	Neuburg an der Donau	Germany
Kirn	Kessler ¹	¹ NeuroTrans-Data	Neuburg an der Donau	Germany	Gerd	Reifschneider ¹	¹ NeuroTrans-Data	Neuburg an der Donau	Germany
Ulrike	Kirchhöfer ¹	¹ NeuroTrans-Data	Neuburg an der Donau	Germany	Stefan	Ries ¹	¹ NeuroTrans-Data	Neuburg an der Donau	Germany
Jürgen	Kirchmeier ¹	¹ NeuroTrans-Data	Neuburg an der Donau	Germany	Christoph	Rieth ¹	¹ NeuroTrans-Data	Neuburg an der Donau	Germany
Rupert	Knoblich ¹	¹ NeuroTrans-Data	Neuburg an der Donau	Germany	Holger	Roick ¹	¹ NeuroTrans-Data	Neuburg an der Donau	Germany
Thomas	Knoll ¹	¹ NeuroTrans-Data	Neuburg an der Donau	Germany	Gerhard Dieter	Roth ¹	¹ NeuroTrans-Data	Neuburg an der Donau	Germany
Philipp	Knorn ¹	¹ NeuroTrans-Data	Neuburg an der Donau	Germany	Roland	Roth ¹	¹ NeuroTrans-Data	Neuburg an der Donau	Germany
Monika	Köchling ¹	¹ NeuroTrans-Data	Neuburg an der Donau	Germany	Ali	Safavi ¹	¹ NeuroTrans-Data	Neuburg an der Donau	Germany
Anselm Wolfgang	Kornhuber ¹	¹ NeuroTrans-Data	Neuburg an der Donau	Germany	Joachim	Saur ¹	¹ NeuroTrans-Data	Neuburg an der Donau	Germany
Bernd	Kramer ¹	¹ NeuroTrans-Data	Neuburg an der Donau	Germany	Brigitte	Schmitt-Roth ¹	¹ NeuroTrans-Data	Neuburg an der Donau	Germany
Michaela	Krause ¹	¹ NeuroTrans-Data	Neuburg an der Donau	Germany	Erich Franz	Scholz ¹	¹ NeuroTrans-Data	Neuburg an der Donau	Germany
Martin	Krauß ¹	¹ NeuroTrans-Data	Neuburg an der Donau	Germany	Herbert	Schreiber ¹	¹ NeuroTrans-Data	Neuburg an der Donau	Germany
Ralf	Kubalek ¹	¹ NeuroTrans-Data	Neuburg an der Donau	Germany	Klaus	Schreiber ¹	¹ NeuroTrans-Data	Neuburg an der Donau	Germany
Jürgen	Kunz ¹	¹ NeuroTrans-Data	Neuburg an der Donau	Germany	Christoph	Schrey ¹	¹ NeuroTrans-Data	Neuburg an der Donau	Germany
Harald	Landefeld ¹	¹ NeuroTrans-Data	Neuburg an der Donau	Germany	Carsten	Schumann ¹	¹ NeuroTrans-Data	Neuburg an der Donau	Germany
Thomas	Lange ¹	¹ NeuroTrans-Data	Neuburg an der Donau	Germany	Martin	Seiler ¹	¹ NeuroTrans-Data	Neuburg an der Donau	Germany
Klaus	Lehmann-Horn ¹	¹ NeuroTrans-Data	Neuburg an der Donau	Germany	Karl-Otto	Sigel ¹	¹ NeuroTrans-Data	Neuburg an der Donau	Germany
Esther	Lippert ¹	¹ NeuroTrans-Data	Neuburg an der Donau	Germany	Viola	Sikora ¹	¹ NeuroTrans-Data	Neuburg an der Donau	Germany
Karla	Lippmann ¹	¹ NeuroTrans-Data	Neuburg an der Donau	Germany	Nikolaos	Sotiriadis ¹	¹ NeuroTrans-Data	Neuburg an der Donau	Germany
Walter	Maier-Janson ¹	¹ NeuroTrans-Data	Neuburg an der Donau	Germany	Stefanie	Spiegel ¹	¹ NeuroTrans-Data	Neuburg an der Donau	Germany
Martin	Märkl ¹	¹ NeuroTrans-Data	Neuburg an der Donau	Germany	Detlef	Städt ¹	¹ NeuroTrans-Data	Neuburg an der Donau	Germany

First Name	Surname	Affiliation	City	Country
Torsten	Sühnel ¹	¹ NeuroTrans-Data	Neuburg an der Donau	Germany
Klaus	Tiel-Wilck ¹	¹ NeuroTrans-Data	Neuburg an der Donau	Germany
Jochen Christoph	Ulzheimer ¹	¹ NeuroTrans-Data	Neuburg an der Donau	Germany
Barbara Sofie	Unsorg ¹	¹ NeuroTrans-Data	Neuburg an der Donau	Germany
Silvia	Voith ¹	¹ NeuroTrans-Data	Neuburg an der Donau	Germany
Achim Stephan	Wannenmacher ¹	¹ NeuroTrans-Data	Neuburg an der Donau	Germany
Hildegund	Weber ¹	¹ NeuroTrans-Data	Neuburg an der Donau	Germany
Markus	Weih ¹	¹ NeuroTrans-Data	Neuburg an der Donau	Germany
Bernd	Wendtland ¹	¹ NeuroTrans-Data	Neuburg an der Donau	Germany
Andreas	Wiborg ¹	¹ NeuroTrans-Data	Neuburg an der Donau	Germany
Martin	Wimmer ¹	¹ NeuroTrans-Data	Neuburg an der Donau	Germany
Thomas	Winker ¹	¹ NeuroTrans-Data	Neuburg an der Donau	Germany
Isaak	Wontroba ¹	¹ NeuroTrans-Data	Neuburg an der Donau	Germany
Monika	Wüstenhagen ¹	¹ NeuroTrans-Data	Neuburg an der Donau	Germany

Authors' contributions

Conceptualization: StB, SaB, PD, EMLR, AB; Data Curation: StB, YH; Formal Analysis: StB, JH, YH; Funding: AB; Investigation: StB, CB, SaB; Methodology: EMLR, JH, YH; Project Administration: EMLR, AB; Software: YH; Supervision: StB, SaB, CB, PD, EMLR; Writing – Original: StB, SaB; Writing – Review & Editing & Approval: StB, SaB, CB, JH, PD, EMLR, AB, YH.

Funding

The study was funded by Roche Pharma AG, Grenzach-Wyhlen, who provided funding for study conduct, laboratory, data analysis and writing assistance in the development of this article.

Availability of data and materials

Any queries regarding data availability can be forwarded to the corresponding author (StB). The trial results will be made available by scientific publication and reported to the funding body.

Declarations

Ethics approval and consent to participate

Ethics approval for this study was obtained from the following ethics committees:

- Ethical committee of the Bavarian Medical Board (Bayerische Landesärztekammer; 14 Jun 2012, No. 11144).
- Ethical committee of the Medical Board North-Rhine (Ärzttekammer Nordrhein, 25 April 2017, ID 2017071).

All methods were carried out in accordance with relevant guidelines and regulations.

Participants provided written informed consent to the use of the trial data.

Consent for publication

Not applicable.

Competing interests

Stefan Braune received honoraria from Kassenärztliche Vereinigung Bayerns and health maintenance organisations for patient care, and from Biogen, NeuroTransData, Novartis, and Roche for consulting, project management, clinical studies, and lectures; he also received honoraria and expense compensation as a board member of NeuroTransData.

Sandra Bluemich, Carola Bruns and Jeanette Hoffmann are employees of Roche Pharma AG, Grenzach-Wyhlen, Germany.

Petra Dirks and Erwan Muros-Le Rouzic are employees of Hoffmann-La Roche Ltd, Basel, Switzerland.

Arnfin Bergmann received honoraria from NeuroTransData for project management, clinical studies, and travel expenses from Novartis and Servier; he also received honoraria and expense compensation as a board member of NeuroTransData.

Yanic Heer is an employee of PricewaterhouseCoopers (PwC), Zurich, Switzerland.

Received: 24 February 2023 Accepted: 2 June 2023

Published online: 05 July 2023

References

1. Montalban X, Gold R, Thompson AJ, Otero-Romero S, Amato MP, Chandraratna D, et al.ECTRIMS/EAN Guideline on the pharmacological treatment of people with multiple sclerosis. *Mult Scler*. 2018;24(2):96–120. <https://doi.org/10.1177/1352458517751049>.
2. Miller DH, Leary SM. Primary-progressive multiple sclerosis. *Lancet Neurol*. 2007;6(10):903–12. [https://doi.org/10.1016/s1474-4422\(07\)70243-0](https://doi.org/10.1016/s1474-4422(07)70243-0).
3. Lublin FD, Reingold SC, Cohen JA, Cutter GR, Sorensen PS, Thompson AJ, et al. Defining the clinical course of multiple sclerosis: the 2013 revisions. *Neurology*. 2014;83(3):278–86. <https://doi.org/10.1212/WNL.0000000000000560>.
4. McKay KA, Kwan V, Duggan T, Tremlett H. Risk factors associated with the onset of relapsing-remitting and primary progressive multiple sclerosis: a systematic review. *Biomed Res Int*. 2015;2015:817238. <https://doi.org/10.1155/2015/817238>.
5. Andersson PB, Waubant E, Gee L, Goodkin DE. Multiple sclerosis that is progressive from the time of onset: clinical characteristics and progression of disability. *Arch Neurol*. 1999;56(9):1138–42. <https://doi.org/10.1001/archneur.56.9.1138>.
6. Montalban X, Hauser SL, Kappos L, Arnold DL, Bar-Or A, Comi G, et al. Ocrelizumab versus placebo in primary progressive multiple sclerosis. *N Engl J Med*. 2017;376(3):209–20. <https://doi.org/10.1056/NEJMoa1606468>.
7. Debouverie M, Louis S, Pittion-Vouyovitch S, Roederer T, Vespignani H. Multiple sclerosis with a progressive course from onset in Lorraine-Eastern France. *J Neurol*. 2007;254(10):1370–5. <https://doi.org/10.1007/s00415-007-0554-3>.
8. Harding KE, Wardle M, Moore P, Tomassini V, Pickersgill T, Ben-Shlomo Y, et al. Modelling the natural history of primary progressive multiple sclerosis. *J Neurol Neurosurg Psychiatry*. 2015;86(1):13–9. <https://doi.org/10.1136/jnnp-2014-307791>.
9. Cottrell DA, Kremenchutzky M, Rice GP, Koopman WJ, Hader W, Baskerville J, et al. The natural history of multiple sclerosis: a geographically based study. 5. The clinical features and natural history of primary progressive multiple sclerosis. *Brain*. 1999;122(Pt 4):625–39. <https://doi.org/10.1093/brain/122.4.625>.
10. Koch M, Kingwell E, Rieckmann P, Tremlett H. The natural history of primary progressive multiple sclerosis. *Neurology*. 2009;73(23):1996–2002. <https://doi.org/10.1212/WNL.0b013e3181c5b47f>.
11. Wehrle K, Tozzi V, Braune S, Roßnagel F, Dikow H, Paddock S, et al. Implementation of a data control framework to ensure confidentiality, integrity, and availability of high-quality real-world data (RWD) in the NeuroTrans-Data (NTD) registry. *JAMIA Open*. 2022;5(1):o0ac017. <https://doi.org/10.1093/jamiaopen/o0ac017>.
12. Ludwig K, von der Graf Schulenburg JM, Greiner W. German Value Set for the EQ-5D-5L. *Pharmacoeconomics*. 2018;36(6):663–74. <https://doi.org/10.1007/s40273-018-0615-8>.

13. EuroQol—a new facility for the measurement of health-related quality of life. *Health Policy*. 1990;16(3):199–208. [https://doi.org/10.1016/0168-8510\(90\)90421-9](https://doi.org/10.1016/0168-8510(90)90421-9).
14. Cox C, Chu H, Schneider MF, Muñoz A. Parametric survival analysis and taxonomy of hazard functions for the generalized gamma distribution. *Stat Med*. 2007;26(23):4352–74. <https://doi.org/10.1002/sim.2836>.
15. Flachenecker P. Progrediente Multiple Sklerose – Zahlen aus dem MS-Register. <https://www.amsel.de/multiple-sklerose-news/medizin/progrediente-multiple-sklerose-zahlen-aus-dem-ms-register/>. 2021. Accessed 7 Mar 2022.
16. Flachenecker P, Zettl UK. Krankheitsverlauf und Prognose. In: Schmidt RM, Hoffmann FA, Faiss JH, Köhler W, Zettl UK, editors. *Multiple Sklerose*. München: Elsevier-Verlag; 2018. p. 63–72.
17. Kalincik T, Kuhle J, Pucci E, Rojas JI, Tsolaki M, Sirbu CA, et al. Data quality evaluation for observational multiple sclerosis registries. *Mult Scler*. 2017;23(5):647–55. <https://doi.org/10.1177/1352458516662728>.
18. Blinkenberg M, Kjellberg J, Ibsen R, Magyari M. Increased socioeconomic burden in patients with primary progressive multiple sclerosis: A Danish nationwide population-based study. *Mult Scler Relat Disord*. 2020;46:102567. <https://doi.org/10.1016/j.msard.2020.102567>.
19. Thompson AJ, Banwell BL, Barkhof F, Carroll WM, Coetzee T, Comi G, et al. Diagnosis of multiple sclerosis: 2017 revisions of the McDonald criteria. *Lancet Neurol*. 2018;17(2):162–73. [https://doi.org/10.1016/s1474-4422\(17\)30470-2](https://doi.org/10.1016/s1474-4422(17)30470-2).
20. Signori A, Izquierdo G, Lugaresi A, Hupperts R, Grand'Maison F, Sola P, et al. Long-term disability trajectories in primary progressive MS patients: A latent class growth analysis. *Mult Scler*. 2018;24(5):642–52. <https://doi.org/10.1177/1352458517703800>.
21. Marten O, Greiner W. EQ-5D-5L reference values for the German general elderly population. *Health Qual Life Outcomes*. 2021;19(1):76. <https://doi.org/10.1186/s12955-021-01719-7>.
22. KKNMS: Quality Handbook MS / NMOSD. Recommendations for the treatment of Multiple Sclerosis / Neuromyelitis-optica-diseases for physicians. [Qualitätshandbuch MS / NMOSD. Empfehlungen zur Therapie der Multiple Sklerose / Neuromyelitis-optica-Spektrum-Erkrankungen für Ärzte]; 5. revised and updated edition. <http://www.kompetenznetz-multi-plesklerose.de>. 2020. Accessed 3 May 2021.
23. Rauer S, Hoshi MM, Pul R, Wahl M, Schwab M, Haas J, et al. Ocrelizumab Treatment in Patients with Primary Progressive Multiple Sclerosis: Short-term Safety Results from a Compassionate Use Programme in Germany. *Clin Neurol Neurosurg*. 2020;197:106142. <https://doi.org/10.1016/j.clineuro.2020.106142>.
24. Schreiber H, Penner IK, Cooper C, Heike-Schulz S, Leemhuis J, Ziemssen T. EPV-252: Best supportive care for patients with PPMS in Germany prior to ocrelizumab approval: Final results of RETRO PPMS. Abstracts of the 8th Congress of the European Academy of Neurology. *Eur Neurol*. 2022;29(1):838–918.
25. Flachenecker P, Eichstädt K, Berger K, Ellenberger D, Friede T, Haas J, et al. Multiple Sklerose in Deutschland: aktualisierte Auswertungen des MS-Registers der DMSG 2014–2018. *Fortschr Neurol Psychiatr*. 2020;88(07):436–50.
26. Katsavos S, Artemiadis AK, Zacharis M, Argyrou P, Theotoka I, Chryso-vitsanou C, et al. Predicting caregiving status and caregivers' burden in multiple sclerosis. A short report. *Neurol Res*. 2017;39(1):13–5. <https://doi.org/10.1080/01616412.2016.1254942>.
27. Kobelt G, Eriksson J, Phillips G, Berg J. The burden of multiple sclerosis 2015: Methods of data collection, assessment and analysis of costs, quality of life and symptoms. *Mult Scler*. 2017;23(2_suppl):4–16. <https://doi.org/10.1177/1352458517708097>.
28. ClinicalTrials.gov: A Study To Evaluate The Efficacy And Safety Of Fenebrutinib Compared With Ocrelizumab In Adult Participants With Primary Progressive Multiple Sclerosis (FENtrepid). <https://clinicaltrials.gov/ct2/show/NCT04544449>. 2020. Accessed 13 Jun 2022.
29. ClinicalTrials.gov: A Study To Evaluate The Efficacy, Safety and Pharmacokinetics of a Higher Dose of Ocrelizumab in Adults With Primary Progressive Multiple Sclerosis (PPMS). <https://clinicaltrials.gov/ct2/show/NCT04548999>. 2020. Accessed 13 Jun 2022.
30. Koch MW, Greenfield J, Javizian O, Deighton S, Wall W, Metz LM. The natural history of early versus late disability accumulation in primary progressive MS. *J Neurol Neurosurg Psychiatry*. 2015;86(6):615–21. <https://doi.org/10.1136/jnnp-2014-307948>.
31. Tremlett H, Paty D, Devonshire V. The natural history of primary progressive MS in British Columbia, Canada. *Neurology*. 2005;65(12):1919. <https://doi.org/10.1212/01.wnl.0000188880.17038.1d>.
32. Stellmann JP, Neuhaus A, Lederer C, Daumer M, Heesen C. Validating predictors of disease progression in a large cohort of primary-progressive multiple sclerosis based on a systematic literature review. *PLoS One*. 2014;9(3):e92761. <https://doi.org/10.1371/journal.pone.0092761>.
33. VPV: Erwerbsminderungsrente: Jeder Fünfte ist jünger als 50 Jahre. https://www.vpv.de/News/News-Uebersicht/Erwerbsminderungsrente-Jeder-Fuenfte-ist-juenger-als-50-Jahre-Detail_46661.jsp. 2021. Accessed 24 Jan 2022.
34. Statistisches Bundesamt: Bevölkerungsstand: Amtliche Einwohnerzahl Deutschlands 2022. https://www.destatis.de/DE/Themen/Gesellschaft-Umwelt/Bevoelkerung/Bevoelkerungsstand/_inhalt.html. 2023. Accessed 8 May 2023.
35. Salter A, Thomas N, Tyry T, Cutter G, Marrie RA. Employment and absenteeism in working-age persons with multiple sclerosis. *J Med Econ*. 2017;20(5):493–502. <https://doi.org/10.1080/13696998.2016.1277229>.
36. MS Forschungs- und Projektentwicklungs-gGmbH: The MS Registry. <https://www.msregister.de/en/ms-register/das-ms-register>. 2023. Accessed 8 May 2023.
37. van Munster CE, Uitdehaag BM. Outcome Measures in Clinical Trials for Multiple Sclerosis. *CNS Drugs*. 2017;31(3):217–36. <https://doi.org/10.1007/s40263-017-0412-5>.
38. Havrdová E, Arnold DL, Bar-Or A, Comi G, Hartung HP, Kappos L, et al. No evidence of disease activity (NEDA) analysis by epochs in patients with relapsing multiple sclerosis treated with ocrelizumab vs interferon beta-1a. *Mult Scler J Exp Transl Clin*. 2018;4(1):2055217318760642. <https://doi.org/10.1177/2055217318760642>.
39. Kapoor R, Ho PR, Campbell N, Chang I, Deykin A, Forrestal F, et al. Effect of natalizumab on disease progression in secondary progressive multiple sclerosis (ASCEND): a phase 3, randomised, double-blind, placebo-controlled trial with an open-label extension. *Lancet Neurol*. 2018;17(5):405–15. [https://doi.org/10.1016/s1474-4422\(18\)30069-3](https://doi.org/10.1016/s1474-4422(18)30069-3).
40. Vermersch P, Oreja-Guevara C, Siva A, Van Wijmeersch B, Wiendl H, Wuerfel J, et al. Efficacy and safety of ocrelizumab in patients with relapsing-remitting multiple sclerosis with suboptimal response to prior disease-modifying therapies: a primary analysis from the phase 3b CAST-ING single-arm, open-label trial. *Eur J Neurol*. 2022;29(3):790–801. <https://doi.org/10.1111/ene.15171>.
41. Weinstock-Guttman B, Bermel R, Cutter G, Freedman MS, Leist TP, Ma X, et al. Ocrelizumab treatment for relapsing-remitting multiple sclerosis after a suboptimal response to previous disease-modifying therapy: A nonrandomized controlled trial. *Mult Scler*. 2022;28(5):790–800. <https://doi.org/10.1177/13524585211035740>.
42. Wolinsky JS, Vermersch P, Hartung H-P, Naismith RT, Airas L, Townsend B, et al. Sustained reduction in 48-week confirmed disability progression in patients with PPMS treated with ocrelizumab in the ORATORIO OLE: 8-year follow-up. In: ECTRIMS 2021. Virtual; 2021.

Publisher's Note

Springer Nature remains neutral with regard to jurisdictional claims in published maps and institutional affiliations.

Ready to submit your research? Choose BMC and benefit from:

- fast, convenient online submission
- thorough peer review by experienced researchers in your field
- rapid publication on acceptance
- support for research data, including large and complex data types
- gold Open Access which fosters wider collaboration and increased citations
- maximum visibility for your research: over 100M website views per year

At BMC, research is always in progress.

Learn more biomedcentral.com/submissions

