

RESEARCH ARTICLE

Open Access

# Genetic analysis of 62 Chinese families with Duchenne muscular dystrophy and strategies of prenatal diagnosis in a single center



Jingjing Zhang<sup>†</sup>, Dingyuan Ma<sup>†</sup>, Gang Liu, Yuguang Wang, An Liu, Li Li, Chunyu Luo, Ping Hu and Zhengfeng Xu<sup>\*†</sup> 

## Abstract

**Background:** Duchenne muscular dystrophy (DMD) is a severe X-linked recessive neuromuscular disorder. Patients with DMD usually have severe and fatal symptoms, including progressive irreversible muscle weakness and atrophy complicated with gastrocnemius muscle pseudohypertrophy. DMD is caused by mutations in the dystrophin-encoding *DMD* gene, including large rearrangements and point mutations. This retrospective study was aimed at supplying information on our 4-year clinical experience of DMD genetic and prenatal diagnosis at the Department of Prenatal Diagnosis in Women's Hospital of Nanjing Medical University.

**Methods:** Multiplex ligation-dependent probe amplification (MLPA) was used to detect the exon deletions or duplications. And Ion AmpliSeq™ panel for inherited disease was used as the next-generation sequencing (NGS) method to identify the point mutations in exons of *DMD* gene, but the introns were not sequenced.

**Results:** In this study, the large deletions and duplications of *DMD* gene were detected in 32 (51.6%) of the 62 families, while point mutations were detected in 20 families (32.3%). The remaining 10 families with a negative genetic diagnosis need to be reevaluated for clinical symptoms or be detected by other molecular methods. Notably, six novel mutations were identified, including c.412A > T (p.Lys138\*), c.2962delT (p.Ser988Leufs\*16), c.6850dupA (p.Ser2284Lysfs\*7), c.5139dupA (p.Glu 1714Argfs\*5), c.6201\_6203delGCCins CCCA (p.Val2069Cysfs\*14) and c.10705A > T (p.Lys3569\*). In 52 families with positive results, 45 mothers (86.5%) showed positive results during carrier testing and de novo mutations arose in 7 probands. The prenatal diagnosis was offered to 34 fetuses whether the pregnant mother was a carrier or not. As a result, eight male fetuses were affected, three female fetuses were carriers, and the remaining fetuses had no pathogenic mutation.

**Conclusions:** This study reported that MLPA and NGS could be used for screening the *DMD* gene mutations. Furthermore, the stepwise procedure of prenatal diagnosis of *DMD* gene was shown in our study, which is important for assessing the mutation type of fetuses and providing perinatal care in DMD high-risk families.

**Keywords:** Duchenne muscular dystrophy, Dystrophin gene, Multiplex ligation-dependent probe amplification, Next-generation sequencing, Prenatal diagnosis

\* Correspondence: [zhengfeng\\_xu\\_nj@163.com](mailto:zhengfeng_xu_nj@163.com)

<sup>†</sup>Jingjing Zhang and Dingyuan Ma contributed equally to this work.  
Department of Prenatal Diagnosis, Nanjing Maternity and Child Health Care Hospital, Women's Hospital of Nanjing Medical University, 123# Tianfei Street, Qinhuai District, Nanjing 210004, China



## Background

Duchenne muscular dystrophy (DMD) is a severe neuromuscular disease of childhood, defined as progressive deterioration of muscle tissue and resultant weakness, which affects 1 in 3600–6000 male live births [1, 2]. It is an X-linked recessive disease caused by mutations in the *DMD* gene. This gene spans a genomic range of 2.2 Mb and contains 79 exons and 8 promoters. *DMD* gene encodes a protein of dystrophin–glycoprotein complex, which bridges the inner cytoskeleton and the extracellular matrix. The remarkably reduced levels or absence of dystrophin protein is caused by mutations of *DMD* gene, resulting in chronic muscle damage and eventually loss of muscle function in patients with DMD [3].

Many mutations have been described since the discovery of *DMD* gene in 1986 [4]. The mutational studies have indicated that deletions or duplication of exons accounts for approximately 65% of all mutations [5, 6]. Multiplex ligation-dependent probed amplification (MLPA) has been developed to detect the large fragments of deletions or duplications spanning one or more exons [7]. The remaining anomalies are thought to be caused by point mutations, mainly nonsense, frameshift mutations, and small deletion and insertion mutations [8, 9]. The traditional Sanger sequencing of 79 exons of *DMD* gene is costly and time-consuming, making it no appropriate for the purpose of detecting point mutations in *DMD* gene. The target next-generation sequencing technology (NGS), known as deep sequencing, has been widely applied to detect all types of mutations in the *DMD* gene [10, 11].

In the present study, clinical experience of stepwise diagnosis of 62 families with a history of DMD coming

to our center in the last 4 years were reported. Firstly, the proband in the families was analyzed using MLPA and NGS. Secondly, the mother carrier status in the families was investigated. Finally, the prenatal diagnosis of fetuses was offered to the pregnant mother.

## Methods

### Patients

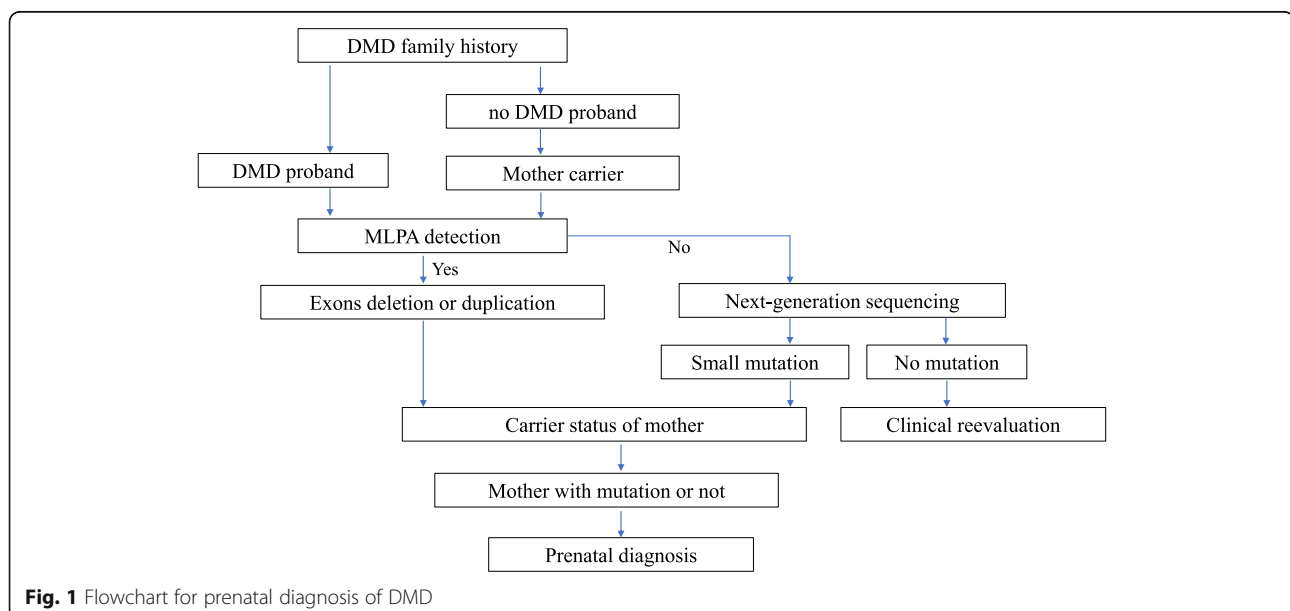
The study was performed at the Department of Prenatal Diagnosis in Women's Hospital of Nanjing Medical University between 2015 and 2018. A total of 155 individuals coming from 62 families with a history of DMD were included in the present study. The female members of the 62 families were in pregnancy or preparing for pregnancy, and 34 pregnant women were referred for the prenatal diagnosis of DMD. The workflow reflected the procedures of the patient management in our study (Fig. 1). This study was approved by the ethics committee of Women's Hospital of Nanjing Medical University. Written informed consent was obtained from the patients or their guardians.

### Genomic DNA samples

A total of 2 mL of peripheral blood was collected from patients to obtain genomic DNA. For the pregnant women, 10 mL of amniotic fluid was collected at 18–24 weeks gestation for prenatal diagnosis. Genomic DNA was extracted according to the protocol of the QIAamp DNA Mini Kit (Qiagen, Hilden, Germany).

### Multiplex ligation-dependent probe amplification

The SALSA MLPA P034 and P035 kits (MRC-Holland, Amsterdam, Netherlands) were used to detect the



deletion or duplication of *DMD* gene. After denaturation, hybridization, ligation, and amplification, the products were examined using an ABI 3500Dx genetic analyzer (Thermo Fisher, USA). The initial data were analyzed using the Coffalyser software V8.0 (<http://www.mlpa.com/coffalyser>). The 30% increase or decrease in the relative peak area of the probe revealed the duplication or deletion of the exons of *DMD* gene, respectively.

#### Next-generation sequencing (NGS)

NGS was used for the point mutation analysis of *DMD* gene in the patients and their family, which was performed using Ion AmpliSeq™ panel of 382 inherited disease-associated genes on an Ion Torrent Personal Genome Machine platform (Life Technologies, MA, USA). Briefly, the Ion AmpliSeq Inherited Disease Panel (Life Technologies, MA, USA) employs over 10,000 primer pairs in just 3 tubes to amplify the exons of 328 genes. After amplification, the library of the target exons was prepared using the Ion AmpliSeq Library Kit 2.0 (Life Technologies, MA, USA). The emulsion polymerase chain reaction was carried out using the Ion OneTouch System and Ion PGM Hi-Q View OT2 Kit (Life Technologies, MA, USA). Then, the template-positive Ion Sphere particles were enriched using the Dynabeads MyOne Streptavidin C1 Beads and washed using the Ion OneTouch Wash Solution (Life Technologies, MA, USA). Sequencing was performed with the PGM system using the Ion PGM Hi-Q View Sequencing Kit and Ion 318 Chip V2 (Life Technologies, MA, USA) according to the manufacturer's protocol. Two samples were tested per run. All the sequencing data were analyzed with the standard Ion Torrent Suite software 4.2. The human genome GRCh37/hg19 was used as a reference, and all the detected variants were filtered against dbSNP142. The sequencing results were viewed using the Integrated Genomic Viewer. In addition, Sanger sequencing was used to confirm the most likely disease-causing variants.

## Results

### Exons deletion or duplication of *DMD* gene was detected by MLPA

Among the 62 families with a history of DMD, exon deletion or duplication was detected in 32 families (32/62, 51.6%) using MLPA (Table 1). The rearrangements contained 31 large deletions and 1 large duplication, accounting for 50% (31/62) and 1.6% (1/62) of families involved in this study, respectively. Single-exon deletions (5/62, 8.1%), which have been verified by RT-PCR, were the most common types of deletions, followed by six-exon deletions (3/62, 4.8%). Exon 49 and 50 were the most frequently deleted exons in 32 families with exon rearrangements.

### Point mutations of *DMD* gene were identified by NGS

The remaining 30 families with negative MLPA results were further investigated using NGS. Point mutations were identified in 20 families (20/62, 32.3%), including 9 (9/62, 14.5%) nonsense mutations, 5 (5/62, 8.1%) small deletion mutations, 3 (3/62, 4.8%) small insertion mutations, 2 (2/62, 3.2%) splicing mutations, and 1 (1/62, 1.6%) small deletion and insertion mutation (Table 1). Of all point mutations, six novel mutations were identified in six unrelated families (Fig. 2). All the six novel mutations led to premature termination codons, which was expected to produce truncated dystrophin protein (Table 2). In addition, 10 families had a negative result from findings of MLPA and NGS. Therefore, clinical re-evaluation or tests using other molecular methods would be required to achieve a genetic diagnosis for the probands in those 10 families.

### Mother carrier status and prenatal diagnosis were investigated by MLPA and sanger sequencing

The mother carrier status was analyzed using MLPA or NGS according to the mutation types of the proband. The results indicated that 45 mothers (45/52, 86.5%) were the carriers, whereas 7 mothers (7/52, 13.5%) did not carry the mutation (Table 1). In the 32 families with exon deletions or duplications, 6 mothers did not have the mutations identified from the proband of the family. Whereas, in the 20 families with point mutations, only 1 mother did not carry the mutation.

According to the results of proband and their mothers, 34 fetuses were tested when the mothers had another pregnancy. Due to the possible germline mosaicism, prenatal diagnosis was suggested to the mothers whether they carried pathogenic mutations or not. The results of prenatal diagnosis showed that eight male fetuses carried the same mutations as the proband, three female fetuses had a carrier status, and the remaining fetuses carried no pathogenic mutation (Table 3). According to the family information and the mutation results, we summarized the pedigree patterns of 62 DMD families (Fig. 3).

## Discussion

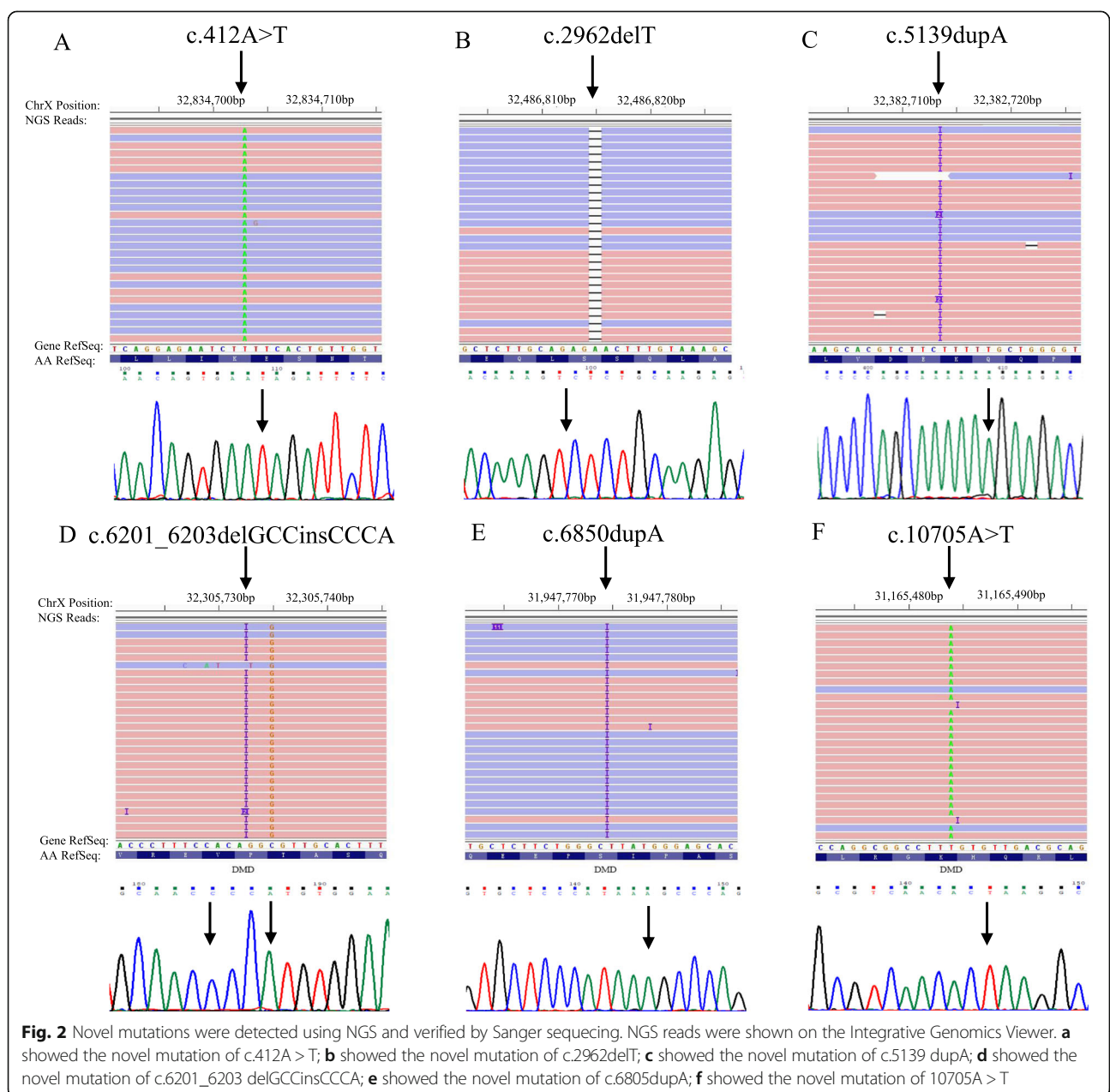
Many patients with a family history of genetic diseases have visited our center. If a proband was confirmed in the family, the members of the family would be worried about their next generation and strongly wished to determine the genetic causes to avoid having the fetus with the same disease. In the present study, data from patients with DMD were retrieved and analyzed. A total of 155 individuals deriving from 62 families with a history of DMD were included in the study. In all, 32 different large rearrangements and 20 point mutations including 6 novel mutations, were identified in 62 probands of the families using MLPA and NGS.

**Table 1** The mutation spectrum of DMD patients in 52 families

| Family number | Exon ID   | Base change              | Effect            | Mutation type                  | Carrier status of mother | Status   |
|---------------|-----------|--------------------------|-------------------|--------------------------------|--------------------------|----------|
| 1             | Exon66    | c.9568C > T              | p.Arg3190*        | Nonsense                       | Yes                      | Reported |
| 2             | Exon47    | c.6804_6807delACAA       | p.Lys2268Asnfs*2  | Small deletions                | Yes                      | Reported |
| 3             | Intron65  | c.9564-427 T > G         |                   | Splicing                       | No                       | Reported |
| 4             | Exon22    | c.2929C > T              | p.Gln977*         | Nonsense                       | Yes                      | Reported |
| 5             | Exon7     | c.583C > T               | p.Arg195*         | Nonsense                       | Yes                      | Reported |
| 6             | Exon41    | c.5899C > T              | p.Arg1967*        | Nonsense                       | Yes                      | Reported |
| 7             | Exon40    | c.5591_5592insT          | p.Leu1864phefs*24 | Small insertions               | Yes                      | Reported |
| 8             | Exon40    | c.5697delA               | p.Lys1899Asnfs    | Small deletions                | Yes                      | Reported |
| 9             | Exon16    | c.1978_1979delAA         | p.K660Efs*59      | Small deletions                | Yes                      | Reported |
| 10            | Exon14    | c.1652G > A              | p.W551*           | Nonsense                       | Yes                      | Reported |
| 11            | Exon14    | c.1615C > T              | p.Arg539*         | Nonsense                       | Yes                      | Reported |
| 12            | Intron45  | c.6615-2A > G            |                   | Splicing                       | Yes                      | Reported |
| 13            | Exon6     | c.412A > T               | p.Lys138*         | Nonsense                       | Yes                      | Novel    |
| 14            | Exon56    | c.8299G > T              | p.E2767*          | Nonsense                       | Yes                      | Reported |
| 15            | Exon62    | c.9204_9207delCAAA       | p.Asn3068Lysfs    | Small deletions                | Yes                      | Reported |
| 16            | Exon23    | c.2962delT               | p.Ser988Leufs*16  | Small deletions                | Yes                      | Novel    |
| 17            | Exon75    | c.10705A > T             | p.Lys3569*        | Nonsense                       | Yes                      | Novel    |
| 18            | Exon47    | c.6850dupA               | p.Ser2284Lysfs*7  | Small insertions               | Yes                      | Novel    |
| 19            | Exon36    | c.5139dupA               | p.E1714Rfs*5      | Small insertions               | Yes                      | Novel    |
| 20            | Exon43    | c.6201_6203delGCCinsCCCA | p.Val2069Cysfs*14 | Small deletions and insertions | Yes                      | Novel    |
| 21            | Exon8–17  |                          |                   | Dup                            | Yes                      | Reported |
| 22            | Exon12–29 |                          |                   | Del                            | Yes                      | Reported |
| 23            | Exon48–50 |                          |                   | Del                            | Yes                      | Reported |
| 24            | Exon47–50 |                          |                   | Del                            | No                       | Reported |
| 25            | Exon49–52 |                          |                   | Del                            | Yes                      | Reported |
| 26            | Exon49–50 |                          |                   | Del                            | Yes                      | Reported |
| 27            | Exon46–52 |                          |                   | Del                            | Yes                      | Reported |
| 28            | Exon45–47 |                          |                   | Del                            | Yes                      | Reported |
| 29            | Exon46–48 |                          |                   | Del                            | Yes                      | Reported |
| 30            | Exon1–44  |                          |                   | Del                            | Yes                      | Reported |
| 31            | Exon46–52 |                          |                   | Del                            | Yes                      | Reported |
| 32            | Exon1–60  |                          |                   | Del                            | Yes                      | Reported |
| 33            | Exon47–50 |                          |                   | Del                            | Yes                      | Reported |
| 34            | Exon49–52 |                          |                   | Del                            | Yes                      | Reported |
| 35            | Exon45    |                          |                   | Del                            | Yes                      | Reported |
| 36            | Exon51–54 |                          |                   | Del                            | No                       | Reported |
| 37            | Exon51–54 |                          |                   | Del                            | No                       | Reported |
| 38            | Exon10–11 |                          |                   | Del                            | Yes                      | Reported |
| 39            | Exon18–41 |                          |                   | Del                            | Yes                      | Reported |
| 40            | Exon17    |                          |                   | Del                            | Yes                      | Reported |
| 41            | Exon51–55 |                          |                   | Del                            | No                       | Reported |
| 42            | Exon45–50 |                          |                   | Del                            | Yes                      | Reported |
| 43            | Exon48–50 |                          |                   | Del                            | Yes                      | Reported |
| 44            | Exon50    |                          |                   | Del                            | No                       | Reported |

**Table 1** The mutation spectrum of DMD patients in 52 families (Continued)

| Family number | Exon ID   | Base change | Effect | Mutation type | Carrier status of mother | Status   |
|---------------|-----------|-------------|--------|---------------|--------------------------|----------|
| 45            | Exon45–50 |             |        | Del           | No                       | Reported |
| 46            | Exon45    |             |        | Del           | No                       | Reported |
| 47            | Exon50    |             |        | Del           | Yes                      | Reported |
| 48            | Exon45–52 |             |        | Del           | No                       | Reported |
| 49            | Exon31–44 |             |        | Del           | Yes                      | Reported |
| 50            | Exon49–51 |             |        | Del           | Yes                      | Reported |
| 51            | Exon43–44 |             |        | Del           | Yes                      | Reported |
| 52            | Exon45–50 |             |        | Del           | Yes                      | Reported |



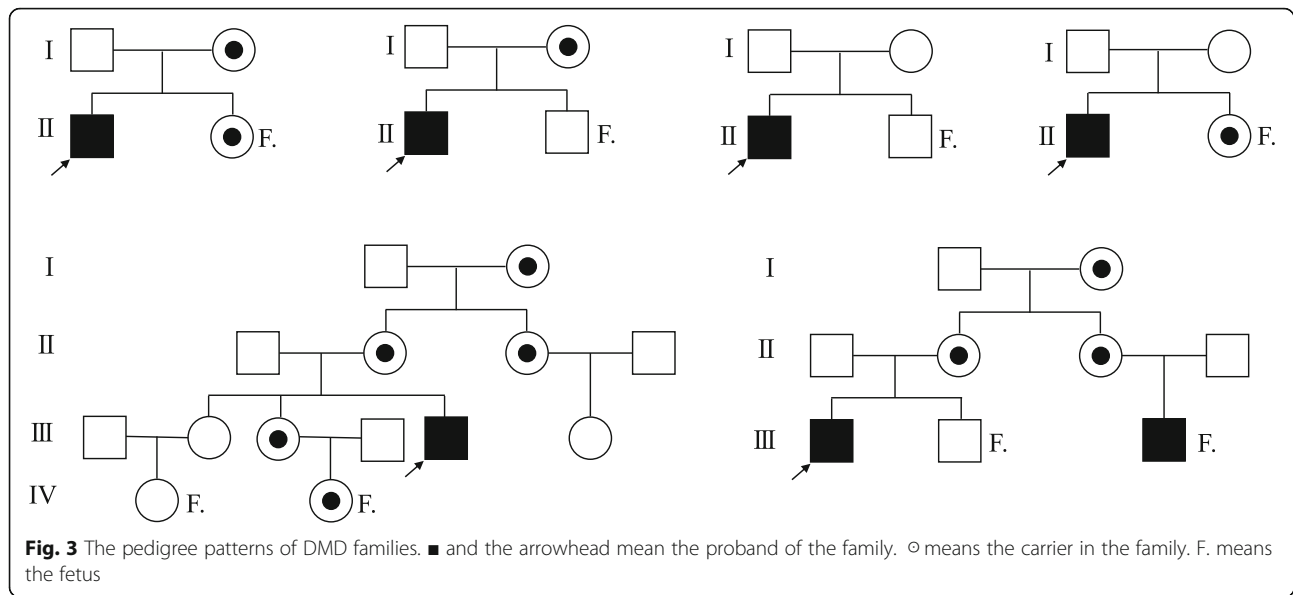
**Table 2** The novel mutations diagnosed by NGS

| Family number | Age of proband (years old) | CK value (U/L) | ExonID | Base change              | Effect            | Mutation type                  | Carrier status of mother |
|---------------|----------------------------|----------------|--------|--------------------------|-------------------|--------------------------------|--------------------------|
| 13            | 8                          | 8616           | Exon6  | c.412A > T               | p.Lys138*         | Nonsense                       | Yes                      |
| 16            | 3                          | 12,817         | Exon23 | c.2962delT               | p.Ser988Leufs*16  | Small deletions                | Yes                      |
| 17            | 1                          | 9880           | Exon75 | c.10705A > T             | p.Lys3569*        | Nonsense                       | Yes                      |
| 18            | 10                         | 19,964         | Exon47 | c.6850dupA               | p.Ser2284Lysfs*7  | Small insertions               | Yes                      |
| 19            | 11                         | 4880           | Exon36 | c.5139dupA               | p.E1714Rfs*5      | Small insertions               | Yes                      |
| 20            | 5                          | 6179           | Exon43 | c.6201_6203delGCCinsCCCA | p.Val2069Cysfs*14 | Small deletions and insertions | Yes                      |

CK Creatine kinase

**Table 3** Prenatal diagnosis of 34 fetuses in high-risk families with DMD family history

| Family number | Proband            | Carrier status of mother | Fetus   | Pregnancy outcome |
|---------------|--------------------|--------------------------|---------|-------------------|
| 1             | c.9568C > T        | Yes                      | -       | -                 |
| 2             | c.6804_6807delACAA | Yes                      | -       | -                 |
| 2             | c.6804_6807delACAA | Yes                      | +       | Termination       |
| 3             | c.9564-427T > G    | No                       | -       | -                 |
| 10            | c.1652G > A        | Yes                      | +       | Termination       |
| 12            | c.6615-2A > G      | Yes                      | -       | -                 |
| 13            | c.412A > T         | Yes                      | -       | -                 |
| 14            | c.8299G > T        | Yes                      | -       | -                 |
| 15            | c.9204_9207delCAAA | Yes                      | +       | Termination       |
| 21            | Exon8-17           | Yes                      | -       | -                 |
| 23            | Exon48-50          | Yes                      | -       | -                 |
| 24            | Exon47-50          | No                       | -       | -                 |
| 25            | Exon49-52          | Yes                      | -       | -                 |
| 26            | Exon49-50          | Yes                      | +       | Termination       |
| 27            | Exon46-52          | Yes                      | +       | Termination       |
| 28            | Exon45-47          | Yes                      | +       | Termination       |
| 31            | Exon46-52          | Yes                      | Carrier | -                 |
| 33            | Exon47-50          | Yes                      | -       | -                 |
| 34            | Exon49-52          | Yes                      | -       | -                 |
| 36            | Exon51-54          | No                       | -       | -                 |
| 37            | Exon51-54          | No                       | -       | -                 |
| 39            | Exon18-41          | Yes                      | -       | -                 |
| 40            | Exon17             | Yes                      | -       | -                 |
| 41            | Exon51-55          | No                       | -       | -                 |
| 42            | Exon45-50          | Yes                      | -       | -                 |
| 44            | Exon50             | No                       | -       | -                 |
| 45            | Exon45-50          | No                       | -       | -                 |
| 46            | Exon45             | No                       | -       | -                 |
| 47            | Exon50             | Yes                      | Carrier | -                 |
| 48            | Exon45-52          | No                       | -       | -                 |
| 49            | Exon31-44          | Yes                      | +       | Termination       |
| 50            | Exon49-51          | Yes                      | +       | Termination       |
| 51            | Exon43-44          | Yes                      | Carrier | -                 |
| 52            | Exon45-50          | Yes                      | -       | -                 |



MLPA has been used to detect the large rearrangements of *DMD* gene since its discovery by Schouten in 2002 [12]. To date, it was reported that approximately 65% patients showed exon deletions or duplications in the *DMD* gene [5, 6]. The results of the present study demonstrated that 51.6% of the probands had large rearrangements, which was slightly lower than that in the similar studies (70.5% [7], 71% [13], 78.7% [14]). The remaining mutations were detected using NGS, and point mutations accounted for 32.3% of the molecular pathology in *DMD* gene in our study, which was slightly higher than that in other studies (30%) [8] (Table 1). It was believed that these differences could be due to the sample size and sample source. In China, MLPA has been widely used in many hospitals and laboratories, while NGS is applied in only a few centers because of its high requirement for laboratory conditions and complex data analysis. In our center, the *DMD* gene could be tested using not only MLPA but also NGS. Therefore, many patients visited the center for detecting point mutations when their MLPA results were negative in other laboratories. As a result, the present study showed a lower rate of rearrangement and a higher rate of point mutations, compared with the findings of the other studies of DMD.

Further, many novel point mutations could be found in the *DMD* gene using NGS. Wang et al. reported that about one third of the mutations could be firstly identified in patients with DMD [8]. This study reported six novel mutations in patients with DMD (Table 2). All the six novel mutations (c.412A > T, c.2962delT, c.10705A > T, c.6850dupA, c.5139 dupA and c.6201\_6203delGCCinsCCCA) led to a premature stop codon, resulting in the production of a shortened dystrophin

protein, which could harm the normal function of dystrophin.

To date, no effective therapies are available for patients with DMD. Therefore, families with a history of DMD showed anxiety and strongly requested prenatal diagnosis to avoid having another child with DMD. The proband's mother and other related female family members were suggested to accept genetic counseling and carrier testing. In the present cohort, the results demonstrated that 45 (45/52, 86.5%) mothers were carriers. If the mother was not a carrier, her son with DMD mostly had a de novo mutation. However, germline mosaicism in DMD should not be ignored as described as early as in the 1980s [15, 16]. Wang et al. reported 3 cases of germline mosaicism in 50 mothers with no pathogenic mutations, suggesting that mosaicism should be considered in the genetic counseling. In our center, prenatal diagnosis was recommended to pregnant women whether they carried the disease-causing mutations or not. In the present study, a total of 34 pregnant women accepted the prenatal diagnosis. The results demonstrated that eight male fetuses were affected, three female fetuses were carriers, and the remaining were normal for the identified mutations in the families respectively (Table 3).

In this study, 10 families did not have positive mutations according to the complete analysis of the exons of the *DMD* gene. Besides *DMD* gene, the exons of 381 inherited disease-associated genes in the disease panel were negative for pathogenic mutations in our study. These genes are associated with over 700 inherited diseases including some other neuromuscular diseases. The detailed diseases are shown in the web: [lifetechnologies.com/ampliseqready](http://lifetechnologies.com/ampliseqready). Therefore, the clinical diagnosis

should be firstly revised in further research. If the manifestations and muscle biopsies were consistent with DMD, the introns of the *DMD* gene should be comprehensively investigated. If the results for introns of *DMD* gene were still negative, the other muscle disease panels or whole-genome sequencing could be used to analyze the pathogenic mutations.

## Conclusions

DMD causes great harm to many patients and their families due to the lack of effective therapies. Accurate genetic and prenatal diagnoses are urgently needed for the families with a history of DMD to avoid having children with DMD. In this retrospective study, MLPA and NGS were combined for the genetic analysis and prenatal diagnosis of 62 Chinese families with DMD proband. Meanwhile, six novel pathogenic point mutations in the *DMD* gene were reported. Generally, when the family members with a history of DMD came to the center, MLPA was first performed for detecting exon deletions or duplications. If the MLPA results were negative, NGS was used to detect the mutations. If positive results were obtained, the carrier testing of the mother was performed. Considering germline mosaicism, the prenatal diagnosis was proposed to all the pregnant women in these families whether they carried the disease-causing mutations or not. If the mutation can not be determined using MLPA and NGS, the clinical information should be evaluated and other methods could be used to uncover the underlying pathogenic mutations (Fig. 1).

## Abbreviations

CK: Creatine kinase; DMD: Duchenne muscular dystrophy; MLPA: Multiplex ligation-dependent probe amplification; NGS: Next-generation sequencing

## Acknowledgments

We are grateful to the members of the DMD families for their help and participation in the study.

## Authors' contributions

JJZ and DYM analyzed the data and wrote the manuscript. GL performed the next-generation sequencing and YGW performed MLPA. LL and AL provided the patients' blood and amniotic fluid, collected and analyzed clinical data. CYL analyzed the data of NGS and MLPA. PH and ZFX designed the study and reviewed the manuscript. All the authors read and approved the final manuscript.

## Funding

The study was supported by the National Natural Science Foundation of China (Grant No: 81741039 and 81770236). The funders did not have any role in study design, data collection, analysis, and interpretation of data and in writing the manuscript.

## Availability of data and materials

The datasets generated and/or analysed during the current study are not publicly available because the raw MLPA and sequencing data were too large to upload but available from the corresponding author on reasonable request.

## Ethics approval and consent to participate

The study was approved by the Ethics Committee of Women's Hospital of Nanjing Medical University in China. Written informed consent to participate was obtained for all participants or their guardians.

## Consent for publication

The patients or their guardians consented to the publication of medical data and genetic data. Written informed consent was obtained from the patients or their guardians.

## Competing interests

The authors declare that they have no competing interests.

Received: 15 March 2019 Accepted: 25 October 2019

Published online: 14 November 2019

## References

- Emery AE. Population frequencies of inherited neuromuscular diseases—a world survey. *Neuromuscul Dis.* 1991;1(1):19–29.
- Bushby K, Finkel R, Birnkrant DJ, Case LE, Clemens PR, Cripe L, Kaul A, Kinnett K, McDonald C, Pandya S, et al. Diagnosis and management of Duchenne muscular dystrophy, part 1: diagnosis, and pharmacological and psychosocial management. *Lancet Neurol.* 2010;9(1):77–93.
- Muntoni F, Torelli S, Ferlini A. Dystrophin and mutations: one gene, several proteins, multiple phenotypes. *Lancet Neurol.* 2003;2(12):731–40.
- Koenig M, Hoffman EP, Bertelson CJ, Monaco AP, Feener C, Kunkel LM. Complete cloning of the Duchenne muscular dystrophy (DMD) cDNA and preliminary genomic organization of the DMD gene in normal and affected individuals. *Cell.* 1987;50(3):509–17.
- Guo R, Zhu G, Zhu H, Ma R, Peng Y, Liang D, Wu L. DMD mutation spectrum analysis in 613 Chinese patients with dystrophinopathy. *J Hum Genet.* 2015;60(8):435–42.
- Yiu EM, Kornberg AJ. Duchenne muscular dystrophy. *J Paediatr Child Health.* 2015;51(8):759–64.
- Yang J, Li SY, Li YQ, Cao JQ, Feng SW, Wang YY, Zhan YX, Yu CS, Chen F, Li J, et al. MLPA-based genotype-phenotype analysis in 1053 Chinese patients with DMD/BMD. *BMC Med Genet.* 2013;14:29.
- Wang Y, Yang Y, Liu J, Chen XC, Liu X, Wang CZ, He XY. Whole dystrophin gene analysis by next-generation sequencing: a comprehensive genetic diagnosis of Duchenne and Becker muscular dystrophy. *Mol Genet Genom.* 2014;289(5):1013–21.
- Ebrahimzadeh-Vesal R, Teymoori A, Azimi-Nezhad M, Hosseini FS. Next generation sequencing approach to molecular diagnosis of Duchenne muscular dystrophy; identification of a novel mutation. *Gene.* 2018;644:1–3.
- Lim BC, Lee S, Shin JY, Kim JI, Hwang H, Kim KJ, Hwang YS, Seo JS, Chae JH. Genetic diagnosis of Duchenne and Becker muscular dystrophy using next-generation sequencing technology: comprehensive mutational search in a single platform. *J Med Genet.* 2011;48(11):731–6.
- Wei X, Dai Y, Yu P, Qu N, Lan Z, Hong X, Sun Y, Yang G, Xie S, Shi Q, et al. Targeted next-generation sequencing as a comprehensive test for patients with and female carriers of DMD/BMD: a multi-population diagnostic study. *Eur J Human Genet.* 2014;22(1):110–8.
- Schouten JP, McElgunn CJ, Waaijjer R, Zwijnenburg D, Diepvens F, Pals G. Relative quantification of 40 nucleic acid sequences by multiplex ligation-dependent probe amplification. *Nucleic Acids Res.* 2002;30(12):e57.
- Lalic T, Vossen RH, Coffa J, Schouten JP, Guc-Scekic M, Radivojevic D, Djuricic M, Breuning MH, White SJ, den Dunnen JT. Deletion and duplication screening in the DMD gene using MLPA. *Eur J Human Genet.* 2005;13(11):1231–4.
- Cho A, Seong MW, Lim BC, Lee HJ, Byeon JH, Kim SS, Kim SY, Choi SA, Wong AL, Lee J, et al. Consecutive analysis of mutation spectrum in the dystrophin gene of 507 Korean boys with Duchenne/Becker muscular dystrophy in a single center. *Muscle Nerve.* 2017;55(5):727–34.
- Bakker E, Van Broeckhoven C, Bonten EJ, van de Vooren MJ, Veenema H, Van Hul W, Van Ommen GJ, Vandenbergh A, Pearson PL. Germline



mosaicism and Duchenne muscular dystrophy mutations. *Nature*. 1987; 329(6139):554–6.

16. Darras BT, Francke U. A partial deletion of the muscular dystrophy gene transmitted twice by an unaffected male. *Nature*. 1987;329(6139):556–8.

### **Publisher's Note**

Springer Nature remains neutral with regard to jurisdictional claims in published maps and institutional affiliations.

**Ready to submit your research? Choose BMC and benefit from:**

- fast, convenient online submission
- thorough peer review by experienced researchers in your field
- rapid publication on acceptance
- support for research data, including large and complex data types
- gold Open Access which fosters wider collaboration and increased citations
- maximum visibility for your research: over 100M website views per year

**At BMC, research is always in progress.**

Learn more [biomedcentral.com/submissions](https://biomedcentral.com/submissions)

