

RESEARCH ARTICLE

Open Access



The increasing burden and complexity of multi-morbidity and polypharmacy in geriatric HIV patients: a cross sectional study of people aged 65 – 74 years and more than 75 years

G. Guaraldi^{1*}, A. Malagoli¹, A. Calcagno², C. Mussi³, B. M. Celesia⁴, F. Carli¹, S. Piconi⁵, G. V. De Socio⁶, A. M. Cattelan⁷, G. Orofino⁸, A. Riva⁹, E. Focà¹⁰, S. Nozza¹¹ and G. Di Perri²

Abstract

Background: Geriatric Patients Living with HIV/AIDS (GEPP0) is a new prospective observational multicentre cohort consisting of all the HIV-positive geriatric patients being treated at 10 clinics in Italy, and HIV-negative controls attending a single geriatric clinic.

The aim of this analysis of the GEPP0 cohort was to compare prevalence and risk factors of individual non-communicable diseases (NCD), multi-morbidity (MM) and polypharmacy (PP) amongst HIV positive and HIV negative controls at enrolment into the GEPP0 cohort.

Methods: This cross-sectional study was conducted between June 2015 and May 2016. The duration of HIV infection was subdivided into three intervals: < 10, 10–20 and > 20 years. The NCD diagnoses were based on guidelines defined criteria, including cardiovascular disease, hypertension, type 2 diabetes, chronic kidney disease, dyslipidaemia, chronic obstructive pulmonary disease. MM was classified as the presence of two or more co-morbidities. The medications prescribed for the treatment of comorbidities were collected in both HIV positive and HIV negative group from patient files and were categorized using the Anatomical Therapeutic Chemical (ATC) classification. PP was defined as the presence of five or more drug components other than anti-retroviral agents.

Results: The study involved a total of 1573 patient: 1258 HIV positive and 315 HIV negative). The prevalence of individual comorbidities was similar in the two groups with the exception of dyslipidaemia, which was more frequent in the HIV-positive patients ($p < 0.01$). When the HIV-positive group was stratified based on the duration of HIV infection, most of the co-morbidities were significantly more frequent than in control patients, except for hypertension and cardiovascular disease, while COPD was more prevalent in the control group. MM and PP were both more prevalent in the HIV-positive group, respectively 64% and 37%.

Conclusions: MM and PP burden in geriatric HIV positive patients are related to longer duration of HIV-infection rather than older age per se.

Keywords: Geriatric HIV-infected population, Multi-morbidity, Polypharmacy

* Correspondence: Giovanni.guaraldi@unimore.it

¹Infectious Disease Clinic, Department of Medical and Surgical Sciences for Children & Adults, University of Modena and Reggio Emilia, Modena, Italy
Full list of author information is available at the end of the article



Background

Aging populations are about to become the next global challenge for global public health. Advances in medicine and socio-economic development have substantially reduced morbidity and mortality due to infectious conditions and, to some extent, non-communicable diseases (NCD) [1]. Moreover, the longer survival of people with chronic conditions explains the increasing proportion of people living with NCDs. The co-existence of two or more NCDs is usually defined as multi-morbidity (MM) [2, 3]. Empirical studies based on surveys and general practice records show that MM is highly prevalent among older adults [4], and is associated with more medication prescriptions (polypharmacy, PP), the greater use of healthcare services, greater disability and mortality, and a poorer health-related quality of life [5–7]. The demographic shift has led gerontologists to recognise the different conditions that people experience during the years known as geriatric age, above 65 years. Furthermore, it has brought with it the widely used subgrouping into the youngest-old (65–74 years), the old (75–84 years), and the oldest-old (≥ 85 years) [8].

In the relatively new context of global aging, Human Immunodeficiency Virus (HIV) infection is less an exception than a paradigm. The increasing age of people living with HIV (PLWH) is the net result of increased survival due to effective antiretroviral therapy (ART) and older age at the time the infection is acquired [9]. A few studies have assessed the clinical presentation of aging HIV patients, particularly the proportion of age-related NCD affecting those aged > 50 years [10–14].

Two European cohorts (POPPY and AgeHIV) identified well-matched HIV-negative subjects. This allowed to study the impact of HIV specific risk factors such as ART exposure and toxicity, immune dysfunction or dysregulation, and chronic immune activation and inflammation [14–19]. Unfortunately, median age of these cohorts are below 50 years and none of these studies have a significant proportion of subjects of appropriately defined geriatric age.

The clinical characteristics of more than 400 patients aged > 75 years in a large French database were described at the 2016 Conference on Retroviruses and Opportunistic Infection (CROI, Boston, 22–25 February 2016). However, they acquired HIV infection at a late age (the median age at the time of starting ART being 64.5 years, range 60–70) [20]. These data have not been published so far. Therefore, the clinical presentation and aging trajectory of geriatric patients aging with HIV infection is still unknown.

Geriatric Patients Living with HIV/AIDS (GEPP0) is a new prospective observational multicentre cohort including consecutive HIV-positive geriatric patients in care at 10 HIV clinics in Northern Central and Southern

Italy, and HIV-negative controls attending a single geriatric clinic.

The overall aims of the GEPP0 study are to determine the health status of HIV-positive patients aged ≥ 65 years and its changes over time. A further aim is to investigate the extent to which the geriatric care model applies to HIV positive patients. Finally, it is intended to identify the contemporary morbidity, mortality and disability factors affecting healthy life expectancy of geriatric HIV positive patients.

In this analysis we compared prevalence and risk factors of individual non-communicable diseases, multi-morbidity and polypharmacy amongst HIV positive and HIV negative controls at enrolment into the GEPP0 cohort. Cross-sectional comparison was stratified by age groups, namely: youngest old (65–75) and old (≥ 75 years).

Methods

This is a cross-sectional analysis of HIV positive and HIV negative geriatric patients at the time of GEPP0 cohort entry between June 2015 and May 2016. The patients were recruited at the time of routine follow up visit at ten HIV clinics in Northern, Central and Southern Italy with a geographical spread of 1000 Km, and were stratified into two groups: the “youngest old” (65–74 years) and the “old” (≥ 75 years). The inclusion criteria were age of ≥ 65 years, treatment with ART for at least six months and signed informed consent.

The HIV-negative subjects were selected from those attending a single geriatric clinic located in the same geographical area as the coordinating site (Modena). This centre offers, general practitioners support in screening NCDs in geriatric patients. The only inclusion criterion was age ≥ 65 years. Given the easy access and free of charge of any diagnostic procedure in geriatric patients, this cohort is representative of the general Italian population.

Ethics

Institutional review Board (IRB) approval was obtained from the Research Ethics Committee of each centre participating in the GEPP0 cohort study. Both HIV positive and HIV negative participants gave their written informed consent, at the time of their initial visit.

Covariates

The demographic covariates and clinical outcomes of the HIV positive and HIV negative subjects were characterised and compared. They included: age, gender, BMI, smoking status. Ex- and never-smokers were grouped together and compared to current smokers. The variables considered in HIV positive patients included: current and nadir CD4 cell counts, CD4/CD8 ratio, plasma HIV RNA viral load (VL). The duration of HIV

infection was calculated as the time between diagnosis and the last visit, and was stratified into < 10, 10–20 and > 20 years. The duration of ART was calculated as the time between the start of ART and the last visit.

Outcomes

The NCDs diagnoses were based on guidelines defined criteria [21]. The cardiovascular disease (CVD) category consisted of diagnoses of myocardial infarction, coronary artery disease, peripheral vascular disease, stroke and angina pectoris, as well as coronary artery bypass grafting and angioplasty, based on records in patient files. Hypertension (HTN) was defined as two consecutive measurements of blood pressure > 140/90 mmHg or use of antihypertensive drugs. Type 2 diabetes mellitus (T2DM) was defined as fasting serum glucose levels ≥ 126 mg/dL or use of antidiabetic drugs. Chronic kidney disease (CKD) was confirmed at an estimated glomerular filtration rate (eGFR) of < 60 mL/min calculated using Chronic Kidney Disease Epidemiology Collaboration (CKD-Epi) equation mL/min/1.73 m². Dyslipidaemia (DLM) was defined in patients with fasting total cholesterol levels > 200 mg/dL or triglyceride levels of > 150 mg/dL or the current use of statins. Diagnosis of HTN, CKD and DLM were confirmed in two consecutive measurements. Chronic obstructive pulmonary disease (COPD) was defined based on pulmonary function tests (spirometry, diffusion capacity of carbon monoxide [DLCO]) demonstrating FEV₁/forced vital capacity (FVC) ratios < 70%. MM was defined as the presence of two or more NCDs [2, 3].

The medications prescribed for the treatment of NCDs were collected from patient files in both HIV positive and HIV negative groups and were categorized using the Anatomical Therapeutic Chemical (ATC) classification in which the drugs are divided into different groups based on therapeutic indication [22]. The analysis considered the prevalence of the six most frequently prescribed classes other than ART with particular regards of cardiovascular active agents including statins, beta-blocker, ACE-inhibitors, anti-hypertensives and acetylsalicylic acid (ASA) and psychoactive agents including benzodiazepines (BDZ).

Polypharmacy was defined as the presence of five or more drug components other than ART. The decision not to include ART was due to the need to compare HIV-positive and HIV-negative subjects.

Statistical analysis

In the participating Centres the study size of the HIV-positive patients was represented by the whole of HIV infected patients meeting inclusion criteria, who presented at routine medical visits in the enrolment period (year 2015).

Per protocol the two groups were matched for age (± 4 years) within male and female groups through a 4:1 ratio, using random selection. A reduced number of HIV negative people were chosen with a view to the large sample size of HIV patients.

Missing data on outcomes were indicated in the tables as different denominators for percentage values.

The between-group comparisons were made using the χ^2 test for categorical variables, and the t test or Mann-Whitney U-test for the normally and non-normally distributed continuous variables respectively.

The probability of MM and PP at each age was compared in the HIV-negative controls and the HIV-positive patients stratified as of the duration of HIV infection (< 10, 10–20 and > 20 years). These times were chosen for two main reasons. Firstly they paralleled the tertile distribution of this variable. Secondly, they identified the subsets of subjects aging since the pre-ART, and the early and the late-ART periods.

Multivariable logistic regression models were built to predict MM and PP including the following as covariates: age categories, gender, BMI, current smoke and duration of HIV infection, using HIV negative as reference.

A second model was restricted to HIV patients including HIV related variables such as: current CD4, CD4 Nadir, CD4/CD8 ratio, HIV-1 VL undetectability (< 40 copies/mL), and residual of ART duration after adjustment for HIV infection duration.

Residual ART duration was calculated through univariate linear regression between ART exposure and duration of HIV infection. This was performed to avoid co-linearity between these two variables.

Statistical analyses were performed using the “R” Software, version 3.2.

Results

The study involved a total of 1573 patient (1258 HIV positive and 315 HIV negative). The HIV-positive patients aged 65–74 and ≥ 75 respectively represented 3.8% and 0.5% of the HIV-positive populations at the GEPPPO recruiting sites.

With regards to demographic and anthropometric variables, mean age was 72 (SD = 4.27) years for men and 71 (SD = 3.94) years for women. HIV positive individuals were thinner and more frequent smokers. In the group of individuals above the age of 75 HIV negative had the same prevalence of smoke habits as HIV-positive ones (10.84% vs 15.23%, $p = 0.39$) (Table 1).

With regards to HIV variables mean HIV duration of 17 years. However, 33% of them had HIV exposure for more than 20 years, representing people aging with HIV from the pre-ART era. The age at HIV diagnosis was significantly higher (60.3 ± 7.6 vs 52.1 ± 8.2) in “old” individuals compared to “youngest old” HIV people ($p < 0.01$).

Table 1 Demographic, anthropometric and HIV variables in the GEPO cohort

Variable	Total n = 1573 Mean (SD) [sample size]	HIV-negative vs HIV-positive			HIV-negative			HIV-positive		
		HIV- (n = 315, 20.03%) Mean (SD/%) [sample size]	HIV+ (n = 1258, 79.97%) Mean (SD/%) [sample size]	p	65–74 years (n = 224, 71.11%) Mean (SD/%) [sample size]	≥ 75 years (n = 91, 28.89%) Mean (SD/%) [sample size]	p	65–74 years (n = 965, 76.71%) Mean (SD/%) [sample size]	≥ 75 years (n = 293, 23.29%) Mean (SD/%) [sample size]	p
Gender (F)	271 (17.23%) [1573]	66 (20.95%) [315]	205 (16.3%) [1258]	0.06 *	42 (18.75%) [224]	24 (26.37%) [91]	0.18 *	155 (16.06%) [965]	50 (15.06%) [293]	0.75 *
Female Age	71.23 (3.94) [271]	71.55 (3.42) [66]	71.15 (4.05) [205]	0.12 ***	69.83 (2.48) [182]	77.46 (2.08) [67]	< 0.01***	69.46 (2.52) [810]	77.5 (2.0) [243]	< 0.01***
Male Age	71.71 (4.27) [1302]	72.61 (4.37) [249]	71.42 (4.21) [1053]	0.06 ***	70.05 (2.75) [42]	75.61 (0.49) [25]	< 0.01***	69.35 (2.48) [155]	77.17 (1.) [50]	< 0.01***
BMI	26.55 (8.59) [1224]	28.65 (4.18) [301]	25.87 (9.5) [923]	< 0.01 ***	28.71 (4.04) [8]	28.52 (4.54) [6]	0.65 ***	26.15 (10.66) [264]	24.98 (3.95) [71]	0.04 ***
Current smoker	313 (23.29%) [1344]	42 (14.24%) [295]	271 (25.83%) [1049]	< 0.01*	33 (15.57%) [212]	9 (10.84%) [83]	0.39 *	234 (29.03%) [806]	37 (15.23%) [243]	< 0.01*
HIV duration (years)	NA	NA	17.17 (7.65) [1240]	NA	NA	NA	NA	17.24 (7.76) [949]	16.92 (7.3) [291]	0.64 **
< 10 years	NA	NA	263 (21.23%) [1240]	NA	NA	NA	NA	200 (21.07%) [949]	63 (21.72%) [291]	0.9*
10–20 years	NA	NA	561 (45.28%) [1240]	NA	NA	NA	NA	433 (45.63%) [949]	128 (44.14%) [291]	
> 20 years	NA	NA	415 (33.49%) [1240]	NA	NA	NA	NA	316 (33.3%) [949]	99 (34.14%) [291]	
CD4 nadir	NA	NA	197.5 (84–310) [1240]	NA	NA	NA	NA	200 (89.75–308) [949]	191 (74.75–320) [291]	0.61 **
Current CD4	NA	NA	644.58 (1240) [1258]	NA	NA	NA	NA	651.23 (290.95) [949]	622.55 (282) [291]	0.18 **
CD4/CD8	NA	NA	0.97 (1.45) [1240]	NA	NA	NA	NA	0.92 (0.8) [949]	1.13 (2.63) [291]	0.28 ***
Viral load ≤40	NA	NA	1044 (94.31%) [1107]	NA	NA	NA	NA	812 (94.97%) [855]	232 (92.06%) [252]	0.11 *
Viral load undetectable	NA	NA	925 (86.53%) [1068]	NA	NA	NA	NA	712 (86.72%) [821]	213 (85.89%) [248]	0.82 *
HBV co-infection	NAv	NAv	103 (9.83%) [1048]	NAv	NAv	NAv	NAv	84 (10.51%) [799]	19 (7.63%) [249]	0.23*
HCV co-infection	NAv	NAv	141 (12.57%) [1121]	NAv	NAv	NAv	NAv	113 (13.11%) [862]	28 (10.77%) [259]	0.12 *
Age at HIV diagnosis	NA	NA	54.03 (8.83) [1239]	NA	NA	NA	NA	52.11 (8.28) [949]	60.3 (7.6) [290]	< 0.01***
Triple/M ART	NA	NA	390 (31.91%) [1222]	NA	NA	NA	NA	312 (31.01%) [1006]	78 (36.11%) [216]	0.17 *
Mono/dual ART	NA	NA	832 (68.09%) [1221]	NA	NA	NA	NA	694 (68.99%) [1006]	138 (63.89%) [215]	

Abbreviations: ART: AntiRetroviral Therapy; BMI: Body Mass Index; HIV: Human Immunodeficiency Virus; NA: not applicable. NAv: not available; p value legends: * X2 test; ** Wilcoxon; *** t test

HIV positive patients had well recovered immune status, as assessed with a mean CD4/CD8 equal to 0.97 and reached HIV-RNA viral load below 40 copies/mL in 94%. Hepatitis C and B co-infection were 13% and 10% respectively (Table 1).

NCDs, MM and PP prevalence increased with age categories with the exception of T2DM and dyslipidaemia in HIV negative patients only (Table 2).

The overall prevalence of MM and PP respectively amounted to 64% and 37% in HIV-positive patients, and 59% and 24% in controls.

In “youngest old” group CKD, DLM and PP only were more prevalent in HIV positive patients; the

same was true in the “old” group for T2DM, DLM and CKD (Table 2).

When the HIV-positive group was stratified by duration of HIV infection, individual comorbidities were significantly more frequent in the HIV-positive subgroups with HIV exposure > 10 years when compared to HIV negative, except for HTN and CVD. The prevalence of COPD was higher in the controls (fig. 1).

Probability of MM was higher in HIV positive patients aging with HIV for more than 10 years when compared to HIV negative controls (fig. 2a). Independent predictors for MM were age > 75 years, higher BMI, male gender and HIV duration above 20 years, all $p < 0.01$

Table 2 NCDs prevalence comparing “youngest old” and “old” individuals

Variable	65–74 Years Old			≥ 75 Years Old		
	HIV- (n = 224, 18.84%)	HIV+ (n = 965, 81.16%)	p	HIV- (n = 91, 23.7%)	HIV+ (n = 293, 76.3%)	p
HTN	149 (66.52%) [224]	396 (60.83%) [652]	0.15	61 (67.03%) [91]	155 (71.76%) [216]	0.49
T2DM	50 (22.32%) [224]	176 (27.54%) [629]	0.15	14 (15.38%) [91]	65 (31.25%) [208]	< 0.01
CVD	41 (18.3%) [224]	106 (16.88%) [628]	0.70	28 (30.77%) [91]	58 (29.15%) [199]	0.88
CKD	5 (5%) [100]	115 (17.06%) [674]	< 0.01	4 (10%) [40]	56 (25.93%) [216]	0.04
COPD	20 (9.13%) [219]	41 (6.61%) [620]	0.28	17 (18.89%) [90]	19 (9.79%) [194]	0.05
DLM	59 (57.84%) [102]	462 (70%) [630]	0.02	20 (50%) [40]	156 (74.64%) [209]	< 0.01
MM	57 (57.58%) [99]	371 (61.32%) [605]	0.55	25 (62.5%) [40]	139 (73.94%) [188]	0.20
PP	44 (19.64%) [224]	169 (35.28%) [479]	< 0.01	32 (35.16%) [91]	73 (42.94%) [170]	0.27

Abbreviations: HTN: Hypertension; T2DM: type 2 diabetes mellitus; CVD: Cardiovascular Disease; CKD: Chronic Kidney Disease; COPD: Chronic Obstructive Pulmonary Disease; DLM: Dyslipidaemia; MM: Multimorbidity; PP - Polypharmacy

(fig. 2b). A second model restricted to HIV patients only (data not presented in fig. 2), while confirming the same predictors of the previous model, failed to identify any association between traditional HIV variables and MM. In particular: current CD4/CD8 OR = 1.53 (95% CI:0.97–2.43, $p = 0.07$), CD4 nadir OR = 1 (95% CI: 1–1, $p = 0.83$), HIV RNA undetectability OR = 1.37 (95% CI:0.65–3.04, $p = 0.42$) and residual ARV exposure duration OR = 0.97 (95% CI:0.9–1.05, $p = 0.45$).

We examined in the GEPP0 cohort the six most frequently prescribed drug classes for the treatment of NCDs. There was no difference in the prescription

of and antidepressants or acetylsalicylic acid (ASA), ace-inhibitors (ACE) and beta-blockers, commonly used in primary or secondary cardiovascular disease prevention. A higher prescription of benzodiazepines (BDZ), used as sleep inducers, was present in HIV negative people ($p < 0.01$), while a higher prescription of statins for dyslipidaemia in HIV positive patients was observed ($p < 0.01$) (fig. 3a). PP was higher in HIV positives, irrespective of duration of HIV-infection (Fig. 3b).

At any age PP was more common in HIV patients (fig. 4a). Drivers for higher PP risk were HIV duration

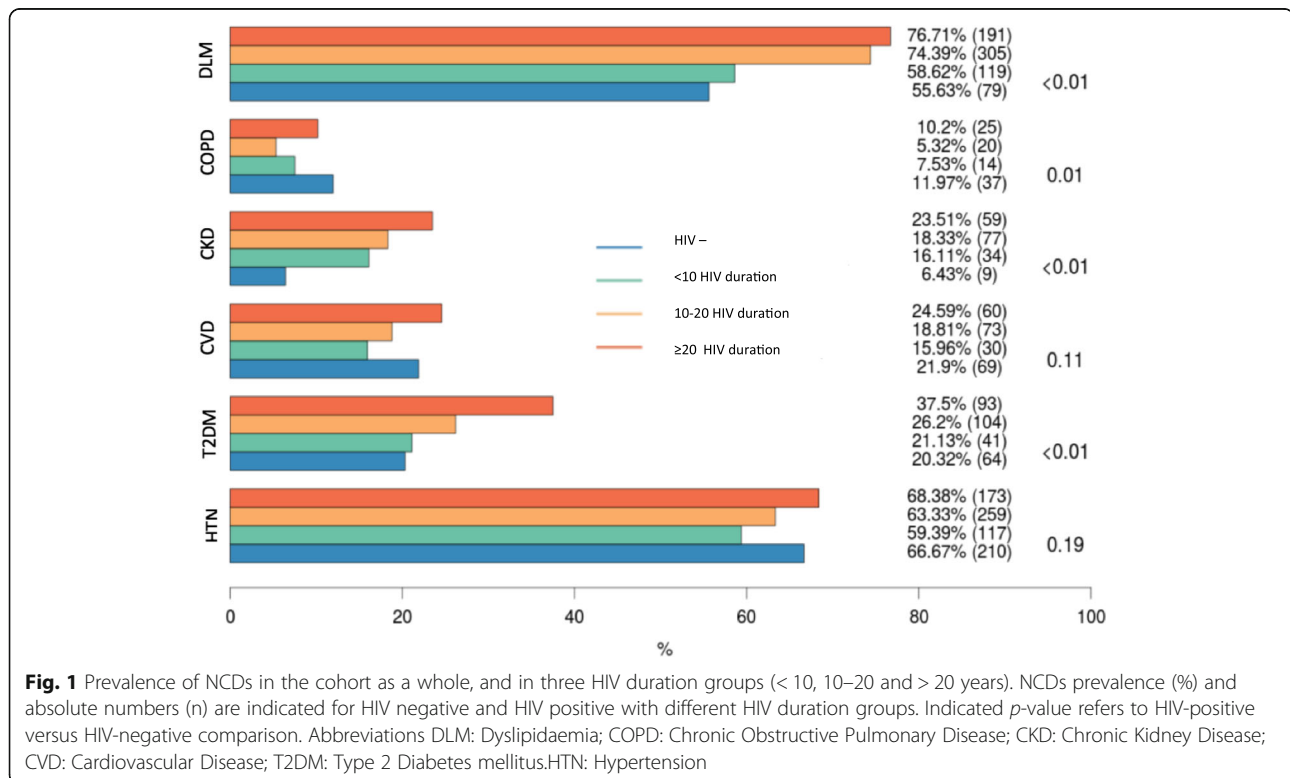
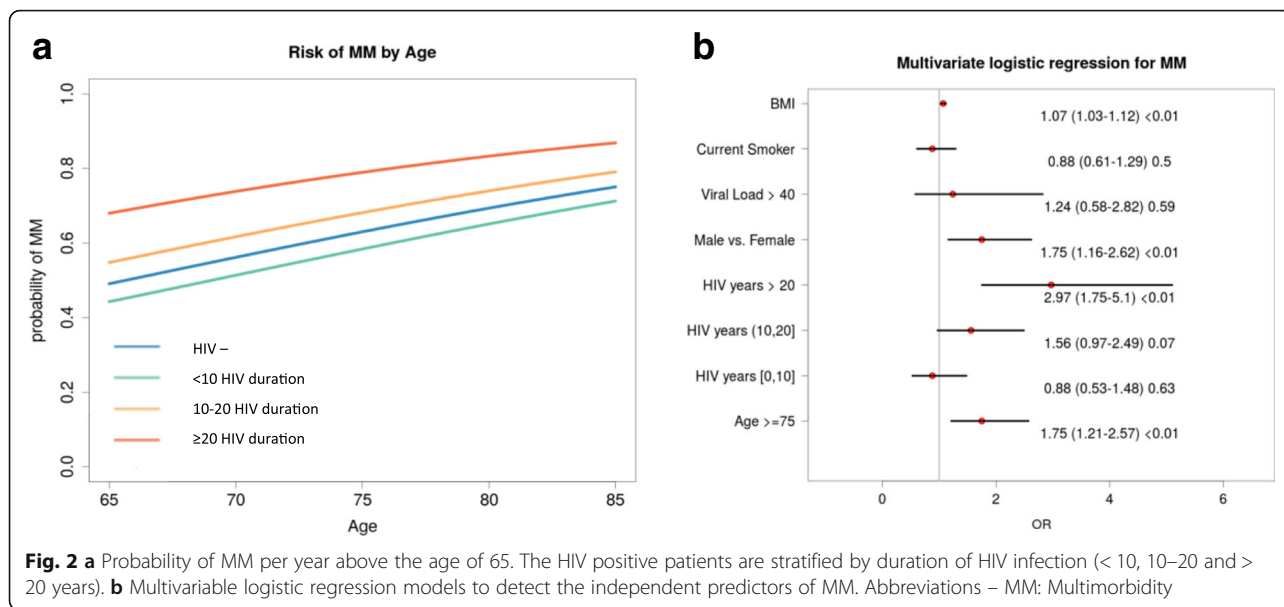


Fig. 1 Prevalence of NCDs in the cohort as a whole, and in three HIV duration groups (< 10, 10–20 and > 20 years). NCDs prevalence (%) and absolute numbers (n) are indicated for HIV negative and HIV positive with different HIV duration groups. Indicated p-value refers to HIV-positive versus HIV-negative comparison. Abbreviations DLM: Dyslipidaemia; COPD: Chronic Obstructive Pulmonary Disease; CKD: Chronic Kidney Disease; CVD: Cardiovascular Disease; T2DM: Type 2 Diabetes mellitus; HTN: Hypertension



with progressive OR increase per increment of HIV duration category and age above 75 years (fig. 4b).

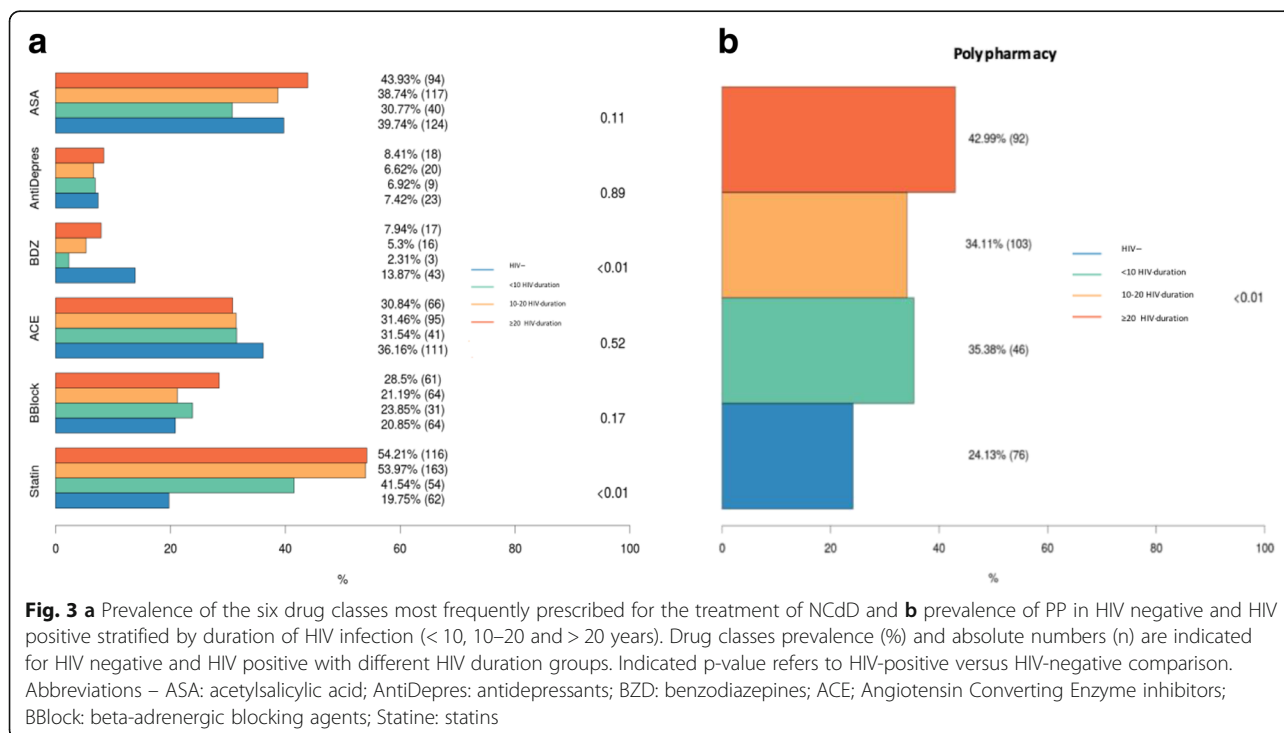
A second model restricted to HIV patients only (data non-presented in fig. 4), while confirming the same predictors of the previous model, failed to identify any association between traditional HIV variables and PP. In particular: current CD4/CD8 OR = 0.83 (95% CI:0.44–1.52, $p = 0.54$), CD4 nadir OR = 1 (95% CI:1–1, $p = 0.73$), HIV RNA undetectability OR = 1.75 (95% CI: 0.91–3.48, $p = 0.1$) and residual ARV exposure duration

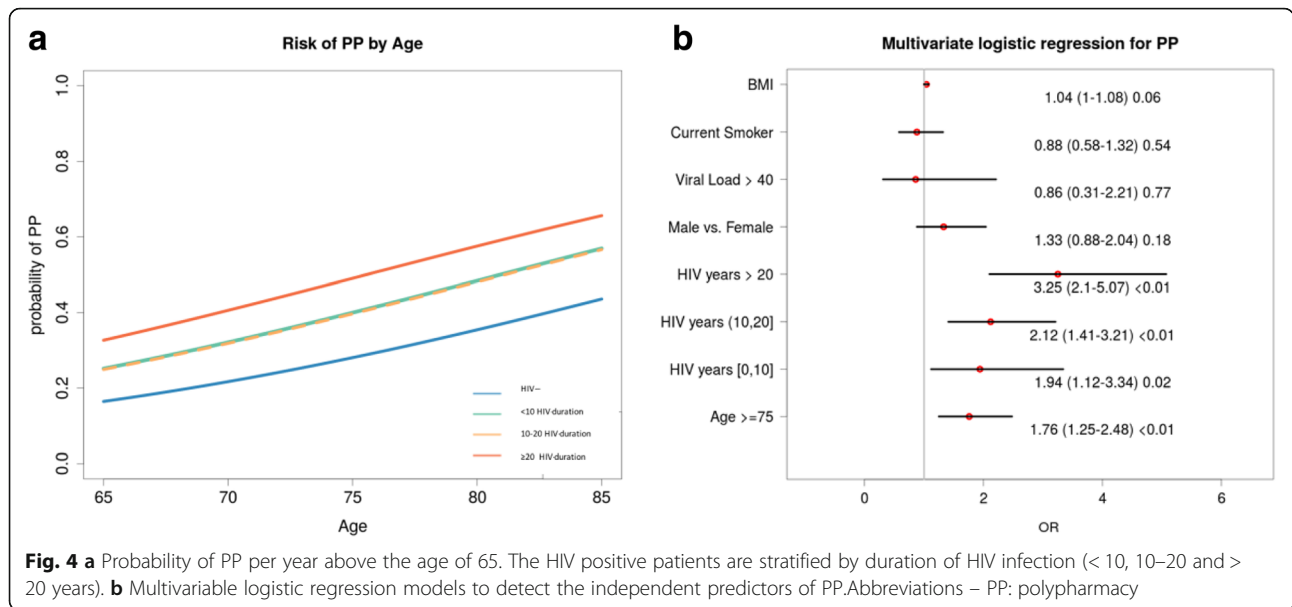
OR = 1.03 (95% CI:0.93–1.13, $p = 0.61$). Significant predictors identified in the original model were confirmed.

Discussion

Our findings indicate that MM and PP in HIV-positive individuals are both related to longer duration of HIV-infection rather than older age per se.

People aging with HIV for more than 20 years are almost three times as likely to have MM than those infected for a shorter period.





It can be noticed that HIV positive patients belonging to the GEPO cohort who have been living with HIV for more than 20 years were all exposed to the first generation of ART. These are “silver champions”, since they represent the best survivors of their generation and warrant as much attention as geriatric medicine has paid to centenarians, possibly identifying protective factors for NCDs.

These individuals have been exposed for years to detectable VL in the pre-ART era and have received highly toxic ART, both of them representing a permanent risk of NCDs.

However, it must be acknowledged that this phenomenon may change in future years. The START trial, a large randomized clinical trial conducted in 35 countries enrolling over 4500 HIV+ ART-naïve subjects randomized to immediate (CD4 ≥ 500/μL) or deferred ART initiation (CD4 < 350/μL) demonstrated that immediate ART reduced incidence of NCDs, pointing to the role of long-term immune activation and inflammation. In the contemporary setting of immediate access to new-generation ART, it can be hypothesised that the prevalence of NCDs and MM will be reduced in the years to come [23].

The prevalence of comorbidities was different in the HIV-positive patients and controls. The higher prevalence of DLM, CKD and T2DM has been widely described [12], and can at least partially be attributed to the metabolic toxicities of ART [24–26]. COPD was more prevalent in the HIV-negative individuals. This is somewhat surprising considering the higher proportion of smokers among HIV positive patients (26% vs 14%), and it suggests that infectious diseases physicians are less likely to use spirometry to screen HIV positive patients. The European AIDS Clinical Society (EACS)

guidelines have only recently introduced COPD as a comorbid condition that should be screened for [21]. There was no difference in the prevalence of CVD or HTN as has been observed in other cohorts [27], possibly due to strategies used to reduce CV risk factors, the increasing use of lipid-friendly ART agents, and reduction of immunodeficiency state.

Most of the participants of the GEPO cohort have MM (59%), this appears to be the norm in HIV-infected geriatric patients [9]. We still need research to investigate the multifactorial nature of MM and the impact of this condition on quality of life, functional status impairment, health service use, and mortality. This will help healthcare services to address the unmet needs of PLWH with MM.

HIV, proportionally with its duration is a risk factor for PP. HIV positive patients have been visiting physicians since a young age and PP may be the result of the “medicalisation” of early diagnosis of NCDs.

MM and PP were both more prevalent in the HIV-positive group, respectively 64% and 37%. The increased burden of PP in this HIV cohort is striking, particularly in the light our very restrictive definition of PP (the chronic use of five or more drugs, excluding ART). The greater the number of medicines patient takes, the greater the risk of adverse effects, and the greater the risk of drug–drug interactions, leading to poor health outcomes, hospitalisations and mortality [28]. This is a dilemma for prescribers, who try to keep the number of medicines to a minimum while ensuring that patients receive what evidence-based guidelines advocate as being in their best interest [29].

Apparently, ID physicians and geriatricians use different drugs to treat the same comorbidities. An important

difference regards the use of statins. Studies have underlined the need to increase statin prescription in HIV-positive patients due to increased cardiovascular risk. However, the use of statins in the elderly is a concern in the context of sarcopenia and fall risk [30]. Possibly geriatricians more than ID physicians are more concerned of this issue and this may be reflected by the fewer statin prescriptions received by the HIV negative controls in the GEPPPO cohort.

Benzodiazepines were prescribed more frequently in the HIV negative than for the HIV positive patients. This may reflect the aversion of former intravenous drug users to use psychoactive drugs that may induce dependence.

With regard to gender, the prevalence and risk of MM (but not PP) was higher among males.

As expected males had increased risk of comorbidities but this was not the same for PP in the Italian national health system context where drugs for NCDs are provided for free in geriatric patients. The risks of MM and PP were different in the subjects aged more or less than 75 years. Apparently, the “younger-old” and “old” geriatric categories cover two subsets of elderly people with different risk profiles, and this must also be considered in HIV-positive patients.

Our data claim for a tailored approach to NCDs, and highlight the development of drug de-prescription strategies in the management of PP. Although de-prescribing is relatively new in HIV medicine, the use of the Beers criteria [31], IPET (Improving Prescribing in the Elderly Tool) [32] and STOPP-START criteria [33, 34] to adjust therapy and reduce potentially inappropriate drugs is well established in geriatric practice, and should be extended to the HIV setting [35]. The benefit of de-prescribing in HIV positive geriatric patients has never been evaluated so far.

The GEPPPO cohort includes HIV-positive patients aged ≥ 65 attending ten HIV clinics across Italy (who, taken together, makes a quite significant absolute number of elderly people living with HIV) and a group of age and gender-matched HIV-negative controls attending a single geriatric clinic. People of this age frequently visit geriatric clinics because of age-related comorbidities. Therefore, our cohort provides a new opportunity to compare HIV-infected patients with HIV-negative controls better representative of the general population than subjects attending centres for sexually transmitted diseases or intravenous drug user facilities used in previous studies.

This study has a number of limitations. Some of these are intrinsic to cross-sectional nature of observational studies, which cannot reveal any causative association between variables. The prevalence of comorbidities, although standardized in cohort studies may overestimate disease condition. This is the case of DLM, where use of statins is used as diagnostic criteria. We found no significant difference of

HIV-related variables other than the duration of HIV infection to be associated with the risk of MM or PP. For this reason, ART exposure was not considered as a covariate, also because it requires properly designed clinically study. Cumulative smoke pack year was not addressed, because not routinely collected in all the clinics. A major limitation of this study was the lack of information on geriatric syndrome, including frailty and falls. Geriatric syndromes, better than NCDs capture the healthy aging outcome that all geriatric studies should address (ref). This information will be available in future studies of GEPPPO cohort.

To the best of our knowledge, the GEPPPO is the first geriatric cohort of HIV-positive patients that may contribute to identify unmet clinical and research needs in terms of comorbidities and their implications for PP. This model highlights the need for evidence-based screening and monitoring protocols to ensure high-quality care.

Conclusions

The findings of this study show MM and PP burden in geriatric HIV positive patients are related to longer duration of HIV-infection rather than older age per se.

Acknowledgements

Authors are grateful for help in data collection to: Liliana Maia, MD, Department of Infectious Diseases of Centro Hospitalar do Porto, Portugal. Morena Valentina, MD and Elena Gervasi MD, Third Division of Infectious Diseases, University of Milan, Ospedale L. Sacco, Milan, Italy. Paola Magro, MD and Eugenia Quiros Roldan, MD, Unit of Infectious and Tropical Diseases, University of Brescia. Andrea Marino, MD, Department of Clinical and Molecular Biomedicine, Division of Infectious Diseases, University of Catania, ARNAS Garibaldi, Catania, Italy.

Funding

This study was not sponsored. This study was carried out as part of the authors routine work.

Availability of data and materials

The datasets used and/or analysed during the current study are available from the corresponding author on reasonable request.

Authors' contributions

GG, MA, CA, MC, CBM, CF, PS, DSGV, CAM, OG, RA, FA, NS, DPG contributed to study design, data collection and revision. GG also did supervision and writing. MA was also the data manager and the person in charge of statistical analyses. All authors read and approved the final manuscript.

Authors' information

Giovanni Guaraldi, MD, is Associate Professor of Infectious disease at the University of Modena and Reggio Emilia. Since the year 2000, he has lead the Modena HIV Metabolic Clinic (MHMC). This referral centre offers a multidisciplinary team approach to HIV patients with metabolic abnormalities, and it offers a multidimensional evaluation of ageing HIV infected patients. More than 4500 patients are followed at this Centre. Prof. Guaraldi published over 300 peer reviewed papers mainly focused on frailty and HIV associated co-morbidities. In 2016 he built the first HIV geriatric cohort in Italy called: Geriatric Patients Living with HIV/AIDS (GEPPPO). Two peer reviewed papers have been published. about this new prospective observational multicentre cohort:

1. Calcagno A, Piconi S, Focà E, Nozza S, Carli F, Montrucchio C, Cattelan AM, Orofino G, Celesia BM, Morena V, De Socio GV, Guaraldi G; **GEPPPO (GERiatric Patients living with HIV/AIDS: a Prospective Multidimensional cOhort)** Study Group. Role of

Normalized T-Cell Subsets in Predicting Comorbidities in a Large Cohort of Geriatric HIV-infected Patient. *J Acquir Immune Defic Syndr*. 2017 Jul 8. doi: <https://doi.org/10.1097/QAI.0000000000001496>. [Epub ahead of print]

- Nozza S, Malagoli A, Maia L, Calcagno A, Focà E, De Socio G, Piconi S, Orofino G, Cattelan AM, Celesia BM, Gervasi E, Guaraldi G; **GEPO Study Group**. **Antiretroviral therapy in geriatric HIV patients: the GEPO cohort study**. *J Antimicrob Chemother*. 2017 Jun 10. doi: <https://doi.org/10.1093/jac/dkx169>. [Epub ahead of print] PMID:28605493

Ethics approval and consent to participate

The study received approval from Comitato Etico Provinciale di Modena. Study 39/2016. IRB approval: Prot.1710 of 10 May 2016. Written informed consent was obtained from participants.

Consent for publication

The paper contains aggregated data only.

Competing interests

GG received research grants from ViiV Healthcare, Gilead, Merck Sharp and Dohme (MSD). Talks grants from ViiV Healthcare, Gilead, Merck Sharp and Dohme, Jansen, BMS. Consultation to ViiV Healthcare, Gilead, Merck Sharp and Dohme. CA received grants, travel grants and speaker's honoraria from Abbvie, BMS, Gilead, ViiV Healthcare, Janssen-Cilag and MSD. CBM received grants, travel grants and speaker's honoraria from Abbvie, BMS, Gilead, ViiV Healthcare, Janssen-Cilag and MSD. DSGV received travel grants from Abbvie, BMS, Gilead, ViiV Healthcare, Janssen-Cilag and MSD. CAM received grants and speaker's honoraria from Abbvie, BMS, Gilead, ViiV Healthcare, Janssen-Cilag and MSD. NS received travel grants and speaker's honoraria from Abbvie, BMS, Gilead, ViiV Healthcare, Janssen-Cilag and MSD. OG received travel grants and speaker's honoraria from Abbvie, BMS, Gilead, ViiV Healthcare, Janssen-Cilag and MSD. RA grants, travel grants and speaker's honoraria from BMS, Gilead, ViiV Healthcare, Janssen-Cilag, Novartis and MSD. FE received travel grants and speaker's honoraria from BMS, Gilead, ViiV Healthcare, Janssen-Cilag and MSD. DPG received grants, travel grants and speaker's honoraria from Abbvie, BMS, Gilead, ViiV Healthcare, Janssen-Cilag and MSD. MA, MC, CF, PS reported no potential conflict of interest.

Publisher's Note

Springer Nature remains neutral with regard to jurisdictional claims in published maps and institutional affiliations.

Author details

¹Infectious Disease Clinic, Department of Medical and Surgical Sciences for Children & Adults, University of Modena and Reggio Emilia, Modena, Italy. ²Unit of Infectious Diseases, Department of Medical Sciences, University of Turin, Turin, Italy. ³Centre of Gerontological Evaluation and Research, University of Modena and Reggio Emilia, Modena, Italy. ⁴Department of Clinical and Molecular Biomedicine, Division of Infectious Diseases, University of Catania, ARNAS Garibaldi, Catania, Italy. ⁵First Division of Infectious Diseases Unit, University of Milan, Ospedale L. Sacco, Milan, Italy. ⁶Department of Infectious Diseases, Azienda Ospedaliero-Universitaria di Perugia, Perugia, Italy. ⁷Unit of Infectious Diseases, Department of Internal Medicine, Azienda Ospedaliero-Universitaria di Padova, Padua, Italy. ⁸Unit of Infectious Diseases, Division A, Ospedale Amedeo di Savoia, ASLTO2, Turin, Italy. ⁹Third Division of Infectious Diseases, University of Milan, Ospedale L. Sacco, Milan, Italy. ¹⁰Unit of Infectious and Tropical Diseases, University of Brescia, Brescia, Italy. ¹¹Department of Infectious Diseases, San Raffaele Scientific Institute, Milan, Italy.

Received: 26 July 2017 Accepted: 12 April 2018

Published online: 20 April 2018

References

- Suzman R, Beard JR, Boerma T, Chatterji S. Health in an ageing world—what do we know? *Lancet*. 2015;385(9967):484–6.
- Fortin M, Bravo G, Hudon C, Lapointe L, Almirall J, Dubois MF, Vanasse A. Relationship between multimorbidity and health-related quality of life of patients in primary care. *Qual Life Res*. 2006;15(1):83–91.
- Starfield B. Challenges to primary care from co- and multi-morbidity. *Prim Health Care Res Dev*. 2011;12:1–2. <https://doi.org/10.1017/S1463423610000484>.
- Fortin M, Stewart M, Poitras ME, Almirall J, Maddocks H. A systematic review of prevalence studies on multimorbidity: toward a more uniform methodology. *Ann Fam Med*. 2012;10(2):142–51.
- Wolff JL, Starfield B, Anderson G. Prevalence, expenditures, and complications of multiple chronic conditions in the elderly. *Arch Intern Med*. 2002;162(20):2269–76.
- Barnett K, Mercer SW, Norbury M, Watt G, Wyke S, Guthrie B. Epidemiology of multimorbidity and implications for health care, research, and medical education: a cross-sectional study. *Lancet*. 2012;380(9836):37–43.
- Agborsangaya CB, Lau D, Lahtinen M, Cooke T, Johnson JA. Multimorbidity prevalence and patterns across socioeconomic determinants: a cross-sectional survey. *BMC Public Health*. 2012;12:201.
- Zizza CA, Ellison KJ, Wernette CM. Total water intakes of community-living middle-old and oldest-old adults. *J Gerontol A Biol Sci Med Sci*. 2009;64(4):481–6.
- Guaraldi G, Zona S, Brothers TD, Carli F, Stentarelli C, Dolci G, Santoro A, Beghetto B, Menozzi M, Mussini C, et al. Aging with HIV vs. HIV seroconversion at older age: a diverse population with distinct comorbidity profiles. *PLoS One*. 2015;10(4):e0118531.
- Rasmussen LD, May MT, Kronborg G, Larsen CS, Pedersen C, Gerstoft J, Obel N. Time trends for risk of severe age-related diseases in individuals with and without HIV infection in Denmark: a nationwide population-based cohort study. *Lancet HIV*. 2015;2(7):e288–98.
- Smit M, Olney J, Ford NP, Vitoria M, Gregson S, Vassall A, Hallett TB. The growing burden of non-communicable disease among persons living with HIV in Zimbabwe. *AIDS*. 2018;32(6):773–82.
- Guaraldi G, Orlando G, Zona S, Menozzi M, Carli F, Garlassi E, Berti A, Rossi E, Roverato A, Palella F. Premature age-related comorbidities among HIV-infected persons compared with the general population. *Clin Infect Dis*. 2011;53(11):1120–6.
- Hasse B, Ledergerber B, Furrer H, Battegay M, Hirschel B, Cavassini M, Bertisch B, Bernasconi E, Weber R, Swiss HIVCS. Morbidity and aging in HIV-infected persons: the Swiss HIV cohort study. *Clin Infect Dis*. 2011; 53(11):1130–9.
- Schouten J, Wit FW, Stolte IG, Kootstra NA, van der Valk M, Geerlings SE, Prins M, Reiss P, Group AGCS. Cross-sectional comparison of the prevalence of age-associated comorbidities and their risk factors between HIV-infected and uninfected individuals: the AGEHIV cohort study. *Clin Infect Dis*. 2014; 59(12):1787–97.
- Kooij KW, Wit FW, Bisschop PH, Schouten J, Stolte IG, Prins M, van der Valk M, Prins JM, van Eck-Smit BL, Lips P, et al. Low bone mineral density in patients with well-suppressed HIV infection: association with body weight, smoking, and prior advanced HIV disease. *J Infect Dis*. 2015;211(4):539–48.
- Deeks SG, Tracy R, Douek DC. Systemic effects of inflammation on health during chronic HIV infection. *Immunity*. 2013;39(4):633–45.
- Justice AC. HIV and aging: time for a new paradigm. *Current HIV/AIDS reports*. 2010;7(2):69–76.
- Underwood J, De Francesco D, Post FA, Vera JH, Williams I, Boffito M, Mallon PW, Anderson J, Sachikonye M, Sabin C, et al. Associations between cognitive impairment and patient-reported measures of physical/mental functioning in older people living with HIV. *HIV Med*. 2017;18(5):363–9.
- Althoff KN, McGinnis KA, Wyatt CM, Freiberg MS, Gilbert C, Oursler KK, Rimland D, Rodriguez-Barradas MC, Dubrow R, Park LS, et al. Comparison of risk and age at diagnosis of myocardial infarction, end-stage renal disease, and non-AIDS-defining cancer in HIV-infected versus uninfected adults. *Clin Infect Dis*. 2015;60(4):627–38.
- Allavena C, Bernaud C, Lariven S, et al. Ageing with HIV: emerging importance of chronic comorbidities in patients over 75. *CROI Conference Boston*. 2016;709:294.
- EACS European AIDS Society Guideline. Available at <http://www.eacsociety.org/guidelines/eacs-guidelines/eacs-guidelines.html>. Last visit 2nd April 2018.
- The Anatomical Therapeutic Chemical Classification System with Defined Daily Doses (ATC/DDD) [<http://www.who.int/classifications/atcddd/en/>] Last Accessed 17 Feb 2018.
- Group ISS, Lundgren JD, Babiker AG, Gordin F, Emery S, Grund B, Sharma S, Avihingsanon A, Cooper DA, Fatkenheuer G, et al. Initiation of antiretroviral therapy in early asymptomatic HIV infection. *N Engl J Med*. 2015;373(9):795–807.

24. Nansseu JR, Bigna JJ, Kaze AD, Noubiap JJ. Incidence and risk factors for prediabetes and diabetes mellitus among HIV infected adults on antiretroviral therapy: systematic review and meta-analysis. *Epidemiol.* 2018; 29(3):431–41.
25. Calza L. Renal toxicity associated with antiretroviral therapy. *HIV clinical trials.* 2012;13(4):189–211.
26. Del Palacio M, Romero S, Casado JL. Proximal tubular renal dysfunction or damage in HIV-infected patients. *AIDS Rev.* 2012;14(3):179–87.
27. Klein DB, Leyden WA, Xu L, Chao CR, Horberg MA, Towner WJ, Hurley LB, Marcus JL, Quesenberry CP Jr, Silverberg MJ. Declining relative risk for myocardial infarction among HIV-positive compared with HIV-negative individuals with access to care. *Clin Infect Dis.* 2015;60(8):1278–80.
28. Cooper JA, Cadogan CA, Patterson SM, Kerse N, Bradley MC, Ryan C, Hughes CM. Interventions to improve the appropriate use of polypharmacy in older people: a Cochrane systematic review. *BMJ Open.* 2015;5(12):e009235.
29. Treadwell J. Coping with complexity: working beyond the guidelines for patients with multimorbidities. *Journal of comorbidity.* 2015;5:11–4.
30. Collins R, Reith C, Emberson J, Armitage J, Baigent C, Blackwell L, Blumenthal R, Danesh J, Smith GD, DeMets D, et al. Interpretation of the evidence for the efficacy and safety of statin therapy. *Lancet.* 2016; 388(10059):2532–61.
31. By the American Geriatrics Society Beers Criteria Update Expert P: American Geriatrics Society 2015 updated beers criteria for potentially inappropriate medication use in older adults. *J Am Geriatr Soc* 2015 Nov;63(11):2227–2246. doi: <https://doi.org/10.1111/jgs.13702>. Epub 2015 Oct 8.
32. Naugler CT, Brymer C, Stolee P, Arcese ZA. Development and validation of an improving prescribing in the elderly tool. *Can J Clin Pharmacol.* 2000 Summer;7(2):103–7.
33. O'Mahony D, O'Sullivan D, Byrne S, O'Connor MN, Ryan C, Gallagher P. STOPP/START criteria for potentially inappropriate prescribing in older people: version 2. *Age Ageing.* 2015;44(2):213–8.
34. Gallagher P, Ryan C, Byrne S, Kennedy J, O'Mahony D. STOPP (screening tool of older Person's prescriptions) and START (screening tool to alert doctors to right treatment). Consensus validation. *Int J Clin Pharmacol Ther.* 2008;46(2):72–83.
35. O'Mahony D, Gallagher PF. Inappropriate prescribing in the older population: need for new criteria. *Age Ageing.* 2008;37(2):138–41.

Ready to submit your research? Choose BMC and benefit from:

- fast, convenient online submission
- thorough peer review by experienced researchers in your field
- rapid publication on acceptance
- support for research data, including large and complex data types
- gold Open Access which fosters wider collaboration and increased citations
- maximum visibility for your research: over 100M website views per year

At BMC, research is always in progress.

Learn more biomedcentral.com/submissions

