


RESEARCH ARTICLE

Open Access



Effect of sedation with dexmedetomidine or propofol on gastrointestinal motility in lipopolysaccharide-induced endotoxemic mice

Haiqing Chang^{1†}, Shuang Li^{1†}, Yansong Li¹, Hao Hu², Bo Cheng¹, Jiwen Miao¹, Hui Gao¹, Hongli Ma¹, Yanfeng Gao^{1*} and Qiang Wang^{1*} 

Abstract

Background: Sepsis often accompanies gastrointestinal motility disorder that contributes to the development of sepsis in turn. Propofol and dexmedetomidine, as widely used sedatives in patients with sepsis, are likely to depress gastrointestinal peristalsis. We queried whether propofol or dexmedetomidine, at sedative doses, aggravated sepsis-induced ileus.

Methods: Sedative/Anesthetic Scores and vital signs of lipopolysaccharide (LPS)-induced endotoxemic mice were measured during sedation with propofol or dexmedetomidine. Endotoxemic mice were divided into 10% fat emulsion, propofol, saline, and dexmedetomidine group. The gastric emptying, small intestinal transit, tests of colonic motility, gastrointestinal transit and whole gut transit were evaluated at 15 mins and 24 h after intraperitoneal injection of sedatives/vehicles respectively.

Results: 40 mg·kg⁻¹ propofol and 80 µg·kg⁻¹ dexmedetomidine induced a similar depth of sedation with comparable vital signs except that dexmedetomidine strikingly decreased heart rate in endotoxemic mice. Dexmedetomidine markedly inhibited gastric emptying ($P = 0.006$), small intestinal transit ($P = 0.006$), colonic transit ($P = 0.0006$), gastrointestinal transit ($P = 0.0001$) and the whole gut transit ($P = 0.034$) compared with the vehicle, whereas propofol showed no depression on all parts of gastrointestinal motility 15 mins after administration. The inhibitive effects of dexmedetomidine in these tests vanished 24 h after the administration.

Conclusions: Deep sedation with dexmedetomidine, but not propofol, significantly inhibited gastrointestinal peristalsis in endotoxemic mice while the inhibitory effect disappeared 24 h after sedation. These data suggested that both propofol and dexmedetomidine could be applied in septic patients while dexmedetomidine should be used cautiously in patients with cardiac disease or ileus.

Keywords: Endotoxemia, Dexmedetomidine, Gastrointestinal motility, ICU, Propofol, Sedation, Sepsis

* Correspondence: gaoyf2009@126.com; dr.wangqiang@139.com

[†]Haiqing Chang and Shuang Li contributed equally to this work.

¹Department of Anesthesiology & Center for Brain Science, The First Affiliated Hospital of Xi'an Jiaotong University, Xi'an 710061, Shaanxi, China
Full list of author information is available at the end of the article



© The Author(s). 2020 **Open Access** This article is licensed under a Creative Commons Attribution 4.0 International License, which permits use, sharing, adaptation, distribution and reproduction in any medium or format, as long as you give appropriate credit to the original author(s) and the source, provide a link to the Creative Commons licence, and indicate if changes were made. The images or other third party material in this article are included in the article's Creative Commons licence, unless indicated otherwise in a credit line to the material. If material is not included in the article's Creative Commons licence and your intended use is not permitted by statutory regulation or exceeds the permitted use, you will need to obtain permission directly from the copyright holder. To view a copy of this licence, visit <http://creativecommons.org/licenses/by/4.0/>. The Creative Commons Public Domain Dedication waiver (<http://creativecommons.org/publicdomain/zero/1.0/>) applies to the data made available in this article, unless otherwise stated in a credit line to the data.

Background

Sepsis has become a life-threatening organ dysfunction with up to 26% mortality in the last decade. It is estimated that there are 19.4 million cases of severe sepsis worldwide, with potentially 5.3 million deaths annually [1]. Impairment of intestinal motility is an inevitable complication of sepsis and sepsis has been identified as one of the risk factors for developing the gastrointestinal (GI) motility problems [2]. In turn, inhibition of propulsive intestinal motility predisposes to gut-derived microbial translocation, which plays a pivotal role in the development of sepsis [3]. It is suggested that a vicious circle might be created by sepsis and GI motility. Thus, in sepsis, GI motility disorder demands our ongoing attention and research.

Severe septic patients who need mechanical ventilation account for 10–20% of all admissions to the intensive care unit (ICU) [4, 5]. Propofol and dexmedetomidine are recommended sedatives for septic patients [6]. Impairment of intestinal peristalsis by sedatives is a major side effect, however, scant attention has been given to it so far [7]. Previous studies demonstrated that symptoms of impaired GI transit such as constipation and feed intolerance occurred in up to 50% of mechanically ventilated patients in ICU and these patients had a longer ICU stay [8, 9]. Thus, we need to devote more attention to the effect of sedatives on GI motility in sepsis.

Propofol as an intravenous anesthetic agent gained US FDA approval for sedation in ICU in 1993 [10]. Some studies showed propofol inhibited gut peristalsis and others showed no alteration on the amplitude of CMMCs in the distal colon and GI transit with propofol [11, 12]. However, extensive researches suggested dexmedetomidine as a popular sedative inhibited GI peristalsis [13, 14]. It is preferable to use a sedative that has fewer inhibitory effects on GI transit, but there is a paucity of data describing this topic in sepsis and there are limited methods that could comprehensively evaluate the motility of all parts of the GI tract in humans. Thus, we sought to examine whether propofol and dexmedetomidine, at sedative doses, can inhibit on GI motility in endotoxemic mice and to compare their differences?

Methods

Animals

Eight–ten weeks old C57BL/6J male mice were supplied by the Laboratory Animal Center of Xi'an Jiaotong University. A standard laboratory diet was given to the mice in a controlled environment (light: dark: 1:1, the cycle starts at 8 Am every day. All animal protocols followed Animal Research: Reporting of In Vivo Experiments (ARRIVE) Guidelines and were approved by the Institutional Animal Care and Use Committee of Xi'an Jiaotong

University. There were no adverse events related to the animals throughout the experiment.

Drugs

Lipopolysaccharide (LPS), Evans blue, methylcellulose, 70 kDa fluorescein isothiocyanate conjugated dextran were bought from Sigma-Aldrich (St Louis, MO, USA). Propofol (Diprivan®, AstraZeneca, London, British), dexmedetomidine (Yangtze River Pharmaceutical Group, Taizhou, Jiangsu, China), isoflurane (RWD Life Science, Shenzhen, Guangdong, China) and 10% fat emulsion (Intralipid®, Fresenius Kabi, Wuxi, Jiangsu, China) were used in present study.

Experimental protocol

First of all, $5 \text{ mg}\cdot\text{kg}^{-1}$ LPS was applied to build the endotoxemic model. For confirming doses of propofol and dexmedetomidine that could induce similar depth of sedative level, sedative/anesthetic scores of endotoxemic mice was evaluated after those mice were injected i.p. using different doses of propofol and dexmedetomidine.

Then, the pulse oxygen saturation, respiratory rate, heart rate and systolic blood pressure were compared between the mice receiving $40 \text{ mg}\cdot\text{kg}^{-1}$ propofol and those receiving $80 \mu\text{g}\cdot\text{kg}^{-1}$ dexmedetomidine.

Finally, as described in Fig. 1a, motility tests of different gastrointestinal section were conducted 15 mins and 24 h after the injection of sedatives/vehicles again respectively.

Endotoxemia model

To set up the endotoxemia model, mice would receive a single intraperitoneal injection of $5 \text{ mg}\cdot\text{kg}^{-1}$ LPS in 0.5 mL 48 h before injection of the sedatives/solvents [15].

Measurement of serum IL-6, TNF- α , and IL-1 β levels

A total of 500 μl of blood was collected 48 h after intraperitoneal administration of $5 \text{ mg}\cdot\text{kg}^{-1}$ LPS or equal volume saline. Following incubation for 1 h, the blood was centrifuged at 2000 g for 10 mins to obtain the serum. Serum IL-6, TNF- α , and IL-1 β levels were measured using enzyme-linked immunosorbent assay (ELISA) kits from Assay Designs. ELISA kits of IL-6, TNF- α , and IL-1 β were purchased from Beyotime Biotechnology (Shanghai, China).

Euthanasia

In some of the following tests of gastrointestinal motility, the mice were sacrificed to examine the gastrointestinal motor function. According to the 2013 AVMA (American Veterinary Medical Association) Guidelines for the Euthanasia of Animals, animals were euthanized via a continuous 5% isoflurane exposure until 1 min

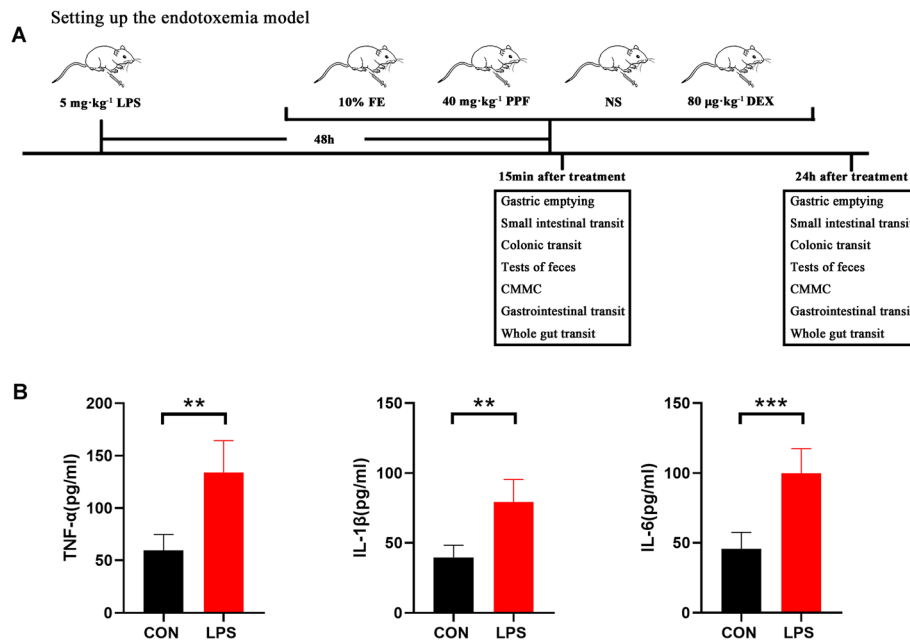


Fig. 1 Protocol of assessing gastrointestinal motility and detection of IL-6, TNF- α , and IL-1 β serum levels. $n = 5$ per group. **a** Firstly, lipopolysaccharide (LPS, $5 \text{ mg}\cdot\text{kg}^{-1}$) was used to set up the endotoxemia model. Then the endotoxemic mice were randomized to four groups 48 h after model establishment, and the following drugs were injected intraperitoneally: 10% fat emulsion, $40 \text{ mg}\cdot\text{kg}^{-1}$ propofol, normal saline, $80 \text{ }\mu\text{g}\cdot\text{kg}^{-1}$ dexmedetomidine. Next, gastric emptying, small intestinal transit, colonic transit, tests of feces, colonic migrating motor complexes, gastrointestinal transit, and whole gut transit were performed 15 mins after injection of sedatives/vehicles. Finally, the same tests were conducted 24 h after the injection of sedatives/vehicles. **b** The mice in the endotoxemia group have much higher IL-6, TNF- α , and IL-1 β serum levels than those mice in the control group. Data were expressed as mean \pm SD and analysed by unpaired t test. $^{***}P < 0.001$, $^{**}P < 0.001$. CON, control. LPS, lipopolysaccharide. FE, fat emulsion. PPF, propofol. NS, normal saline. DEX, dexmedetomidine

after the breath stop. Then gastrointestinal tissue was obtained in these tests.

Sedative/anesthetic scores

Mice were scored every 5 mins after sedatives/vehicles application: wakefulness (score 0): spontaneous locomotor activity in 1 min observation; light sedation (0.2): no spontaneous locomotion in 1 min observation; deep sedation (0.4): no motor response when placed on a grid inclined (45°) with the head down during 30s observation; light anesthesia (0.6): no righting reflex during 30s observation; moderate anesthesia (0.8): no paw withdrawal reflex and deep anesthesia (1.0): no eye blink reflex [16].

Monitoring of vital signs

Vital signs were measured in 5-min intervals during a 35 mins period. Heart rate and breaths were measured by the BL-420F Data Acquisition & Analysis System (Techman Software Co. LTD, Chengdu, China). Systolic pressure was measured by the tail-cuff system (BP-2000 Blood Pressure Analysis System, Visitech Systems, Apex, NC). Oxygen saturation was measured by Radical 7 (Masimo Corporation, Irvine, USA). Vital signs were recorded at 5 mins after sedation since stable parameters

can be gained only when mice were relatively calm and stationary.

Measurement of gastric emptying (GE) and small intestinal transit (SIT)

Overnight fasting mice were given intragastrically 0.1 ml solution containing 5% Evans blue and 1.5% methylcellulose and were sacrificed 15 mins later. The migrating distance of Evans blue and the total length of the small intestine were measured and transit was expressed in %. The stomach was minced and diluted. And the absorbance of each sample was read at a wavelength of 565 nm (A565). The stomach obtained from a mouse sacrificed immediately after orogastric administration of Evans blue served as a standard (reference stomach). The percentage of GE was calculated by the formula $\%GE = [(A565_{\text{reference}} - A565_{\text{sample}})/A565_{\text{reference}}] \times 100\%$ [17].

Colonic transit

Briefly, mice were fasted overnight. A 2 mm glass bead was inserted 2 cm deep into the distal colon after mice were anesthetized using 2% isoflurane. The bead expulsion latency was measured after the recovery of righting reflex [18].

Tests of feces

Mice were housed individually without food for an hour. Fecal pellet output was collected during this period, and numbers and wet weight of feces were recorded. Pellets were dried at 60 °C in the oven overnight, then the dried pellets were weighed right after [19].

Video imaging of colonic migrating motor complexes (CMMCs)

Mice were sacrificed 15 mins after injection of sedatives/solvents. The entire colon was removed and put into Kerbs solution (NaCl 120, KCl 4.7, CaCl₂ 2.4, MgSO₄ 1.2, NaHCO₃ 24.5, KH₂PO₄ 1.0 and glucose 5.6 in mM, pH 7.4). Then, the colon was mounted to allow spontaneous motor patterns to be imaged for the construction of spatiotemporal maps. The contractile activity was recorded with a Logitech Pro camera and video data were processed with MATLAB® (R2018a, version 9.4). Spatiotemporal maps of the diameter at each point along the proximo-distal length of the colon were constructed and used to quantify the frequency of CMMCs as well as the velocity and length of propagation of CMMCs [20].

Gastrointestinal transit (GIT)

GI transit was examined by calculating the Geometric Center (GC) from the average distribution of a non-absorbable fluorescent marker along the GI tract. FITC-dextran was dissolved at a concentration of 5 mg·ml⁻¹ with 0.5% methylcellulose and was given into the stomach (0.1 ml). GI tract of sacrificed mice was harvested 45 mins later and cut averagely into stomach, small bowel (10 segments of equal length), cecum and colon (3 segments of equal length). Tissues were minced, vortexed and centrifuged with 1 ml saline. Supernatants were loaded into a 96 well plate, and the fluorescent signal was read (Cytofluor™ plate reader; excitation 492 nm, emission 518 nm). Geometric Center (GC) was calculated as: $\sum(S_1 \times 1 + S_2 \times 2 + \dots + S_{15} \times 15)$, where *S* was the fraction of the total signal detected in each of the 15 segments [21].

Whole gut transit time (WGTT)

After overnight fasting, mice received intragastrically 0.1 ml of a solution containing Evans blue. Time was recorded from the administration of oral marker to the first appearance of a blue pellet [22].

Statistical analysis

Statistical analyses were performed with Prism 8.0 (GraphPad, San Diego, CA, USA). All of the mice were randomly grouped and tagged, and the statistician was blind to the experimental performer. Shorter migration of marker, longer transit time, less defecation and smaller GC were considered as worse motility. Results are

presented as mean ± SD (standard deviation). Data were evaluated for normal distribution and homogeneity of variance, then analysed by one-way ANOVA (between-group differences were detected with Tukey post hoc tests) or Kruskal–Wallis test (followed by Dunn's multiple comparisons test with Bonferroni correction). Two-way repeated-measures ANOVA was used to analyse vital signs (followed by Sidak's post hoc test for multiple comparisons where applicable). An unpaired t test was used to analyse serum IL-6, TNF-α, and IL-1β levels. Statistical significance was assigned at *P* < 0.05.

Results

Propofol and dexmedetomidine induced dose-dependent sedation in endotoxemic mice

Firstly, we measured the serum levels of IL-6, TNF-α, and IL-1β to confirm the successful establishment of the endotoxemia model (Fig. 1b). Then the depth of sedation of mice with different doses of propofol and dexmedetomidine was evaluated. We found both propofol and dexmedetomidine could induce dose-dependent sedative levels. 40 mg·kg⁻¹ propofol and 80 μg·kg⁻¹ dexmedetomidine produced a comparable deep sedative level 15 mins after injection and we used these doses to perform the following tests (Fig. 2a, b).

Vital signs of endotoxemic mice during sedation with propofol and dexmedetomidine

Vital signs of sedative endotoxemic mice were measured for 35 mins. It revealed that there was no statistical difference between endotoxemic mice with administration of 40 mg·kg⁻¹ propofol and 80 μg·kg⁻¹ dexmedetomidine for breaths (*P* = 0.920), oxygen saturation (*P* = 0.925), and systolic pressure (*P* = 0.608), while heart rate decreased strikingly from 10 mins after the dexmedetomidine treatment (*P* < 0.0001) (Fig. 2c-f).

Dexmedetomidine, but not propofol delayed GE and SIT in endotoxemic mice

Motility of the stomach and small intestine was examined (Fig. 3a, c). We found that GE and SIT were similar in 10% fat emulsion-treated and saline-treated mice. Dexmedetomidine inhibited GE of endotoxemic mice 15 mins after application compared with saline (16.4 ± 7.2% vs 34.7 ± 7.9%, *P* = 0.006) and propofol (16.4 ± 7.2% vs 36.9 ± 11.0%, *P* = 0.002) (Fig. 3b). Similarly, SIT was decreased by dexmedetomidine 15 mins after injection (see images in Fig. 3e), and statistically significant reduction was found as against mice with saline (12.3 ± 5.0% vs 42.5 ± 11.3%, *P* = 0.006) and with propofol (12.3 ± 5.0% vs 42.0 ± 9.4%, *P* = 0.008) (Fig. 3d). However, comparison of GE and SIT among mice with 10% fat emulsion to propofol revealed no significant difference. And

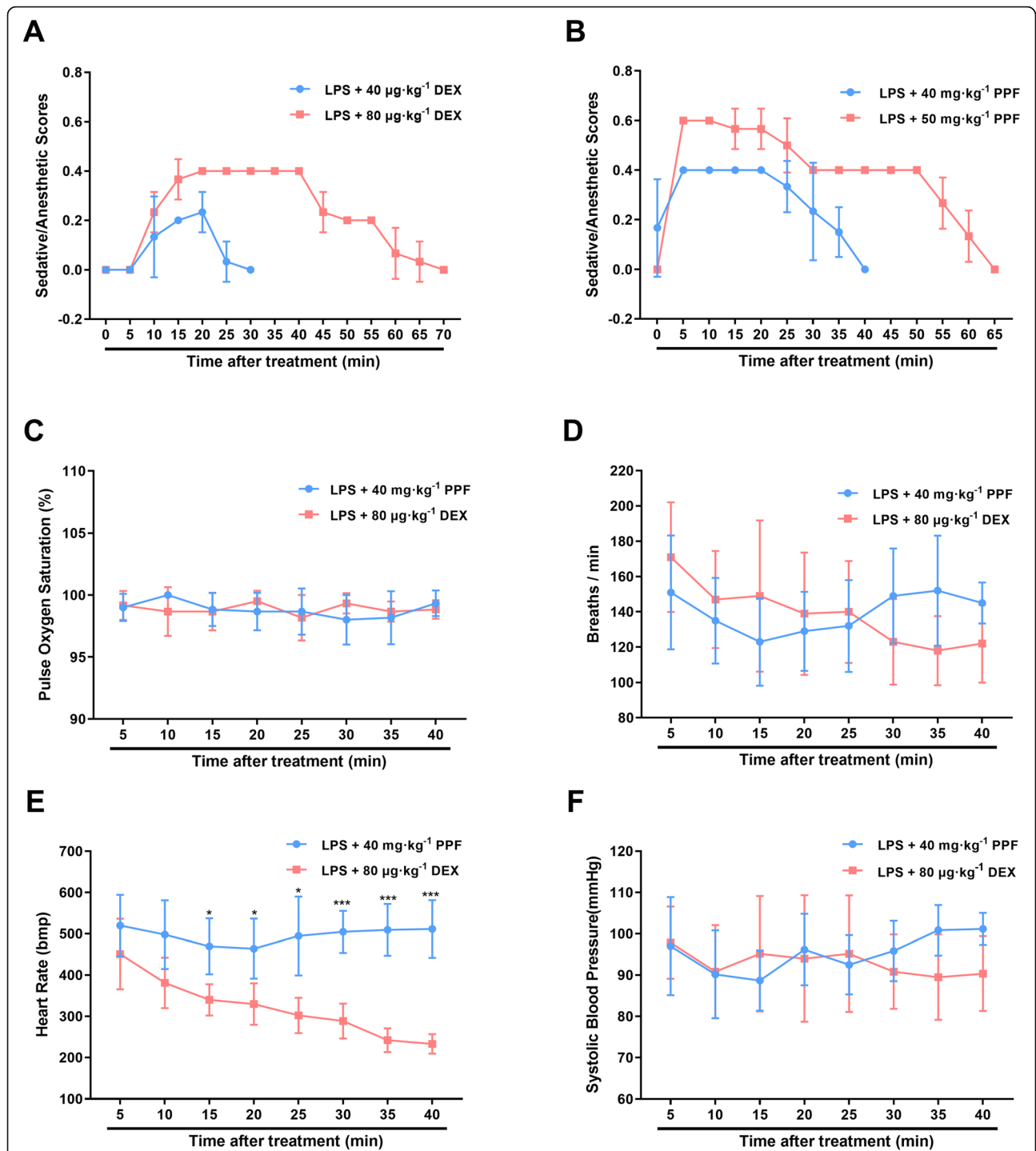
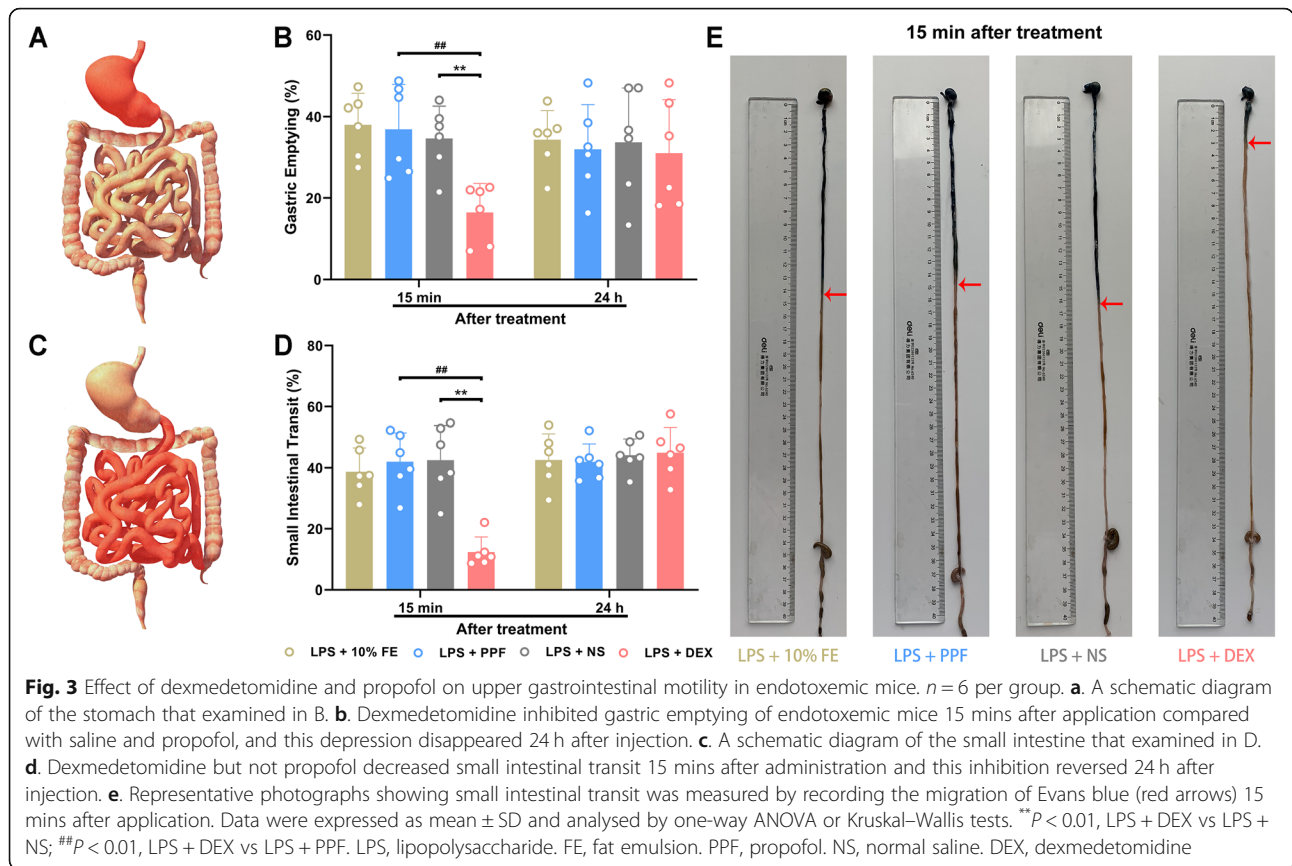


Fig. 2 Depth of sedation and vital signs of endotoxemic mice after administration of propofol or dexmedetomidine. *n* = 6 per group. **a.** Does-dependent sedative depth of endotoxemic mice accepting 40 $\mu\text{g}\cdot\text{kg}^{-1}$ and 80 $\mu\text{g}\cdot\text{kg}^{-1}$ dexmedetomidine. **b.** Does-dependent sedative depth of endotoxemic mice accepting 40 $\text{mg}\cdot\text{kg}^{-1}$ and 50 $\text{mg}\cdot\text{kg}^{-1}$ propofol. **c-f.** The mice with administration of 40 $\text{mg}\cdot\text{kg}^{-1}$ propofol and 80 $\mu\text{g}\cdot\text{kg}^{-1}$ dexmedetomidine had similar pulse oxygen saturation percentage, respiratory rate, and systolic blood pressure over time while dexmedetomidine strikingly decreased heart rate. Vital signs were recorded from 5 mins to 40 mins after sedation. Data were expressed as mean \pm SD and analysed by two-way repeated-measures ANOVA. **P* < 0.05, ****P* < 0.001, LPS + 80 $\mu\text{g}\cdot\text{kg}^{-1}$ DEX vs LPS + 40 $\text{mg}\cdot\text{kg}^{-1}$ PPF. LPS, lipopolysaccharide. PPF, propofol. DEX, dexmedetomidine



dexmedetomidine had no inhibitory effect in GE and SIT 24 h after the application.

Not propofol, but dexmedetomidine inhibited colonic transit and defecation in endotoxemic mice

Colonic motility was traced (Fig. 4a). There was no statistical difference between propofol group and 10% fat emulsion group, saline group and 10% fat emulsion group in colonic transit and defecation. Nevertheless, more time was required to expel glass beads in endotoxemic mice with dexmedetomidine (19,130 ± 5157 s) than those with saline (202 ± 49.6 s), *P* = 0.0006 (Fig. 4b). Fewer feces was excreted in an hour in the dexmedetomidine group, and statistic difference existed between dexmedetomidine-treated and saline-treated mice in the wet weight of feces (*P* = 0.001), dry weight of feces (*P* = 0.003) as well as the number of feces (*P* = 0.003) (Fig. 4c-e). This inhibition of dexmedetomidine on colonic transit and defecation reversed 24 h after implement.

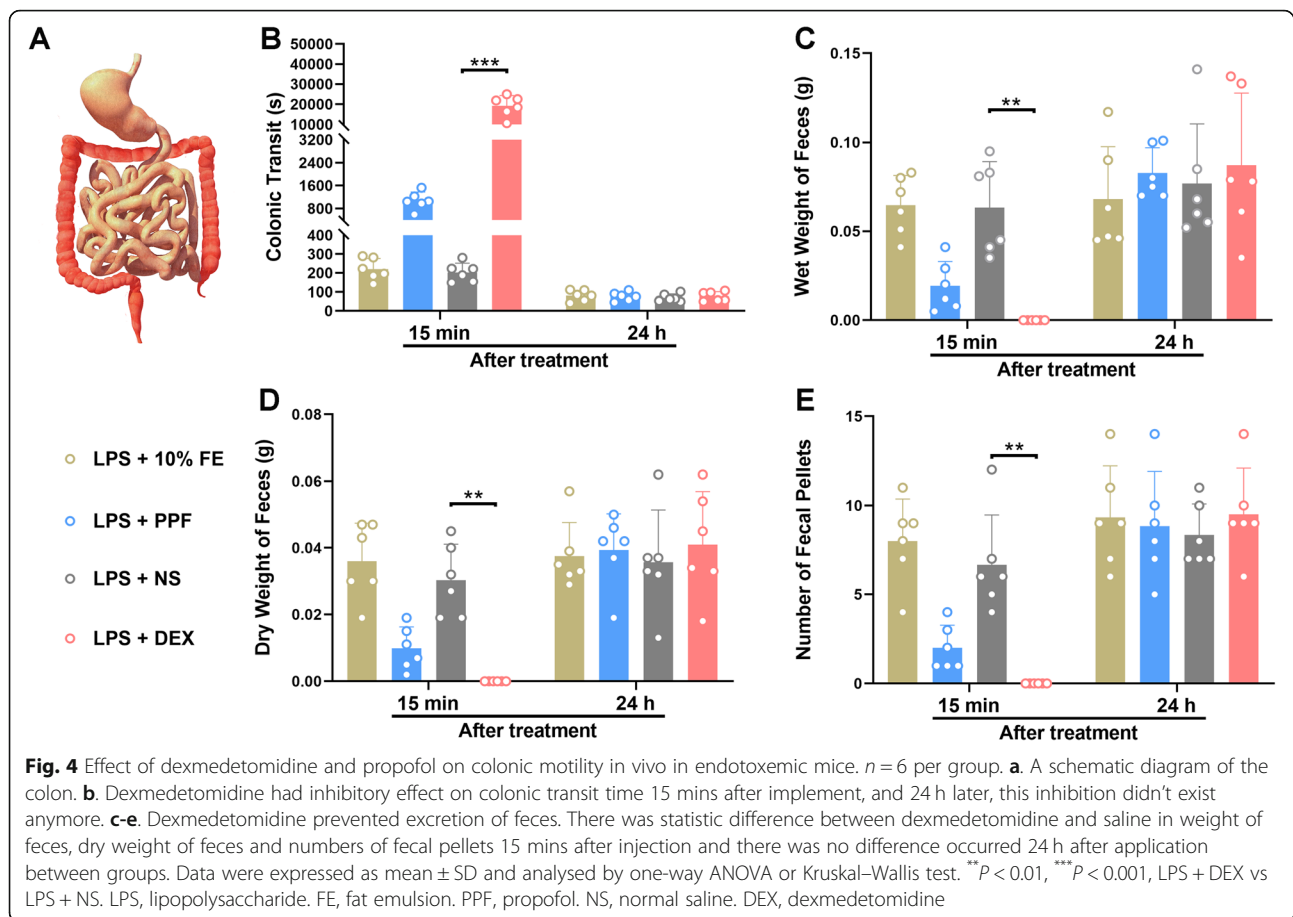
Dexmedetomidine, but not propofol suppressed CMMCs in endotoxemic mice

Spontaneous motility of isolated colon was recorded to check the suppressive effect of dexmedetomidine on colon could still be established in vitro. Spatiotemporal

maps of contractile activity patterns were constructed 15 mins (Fig. 5a-d) and 24 h (Fig. 5e-h) after the treatment of sedatives/vehicles. CMMCs frequency was increased (Fig. 5i; *P* = 0.033), while length of propagation was shortened (Fig. 5j; *P* = 0.044) and velocity was reduced (Fig. 5k; *P* = 0.012) by dexmedetomidine 15 mins after injection as against saline. However, CMMCs did not differ significantly in endotoxemic mice receiving 10% fat emulsion and those receiving propofol. This suppression of dexmedetomidine on CMMCs disappeared 24 h after administration.

Dexmedetomidine, not propofol, depressed whole gastrointestinal motility in endotoxemic mice

GIT and WGTT as sensitive methods to assess the motility of the whole GI tract (Fig. 6i). We checked the distribution of FITC-dextran in endotoxemic mice 15 mins (Fig. 6a-d) and 24 h (Fig. 6e-h) after administration of 10% fat emulsion, propofol, saline, and dexmedetomidine respectively. The dexmedetomidine group had smaller GC than the saline group (*P* = 0.0001) or propofol group (*P* = 0.0003) 15 mins after application (Fig. 6j). In respect of the WGTT, dexmedetomidine (554.5 ± 172.6 mins) significantly prolonged latency of the first blue feces expulsion 15 mins after administration compared with saline (224.7 ± 35.3 mins, *P* = 0.034) and



propofol (210.3 ± 46.9 mins, $P = 0.017$) (Fig. 6k). However, propofol had suppression on neither GIT nor WGTT. What's more, this inhibition of dexmedetomidine on the whole gastrointestinal motility had considerable abatement 24 h after injection.

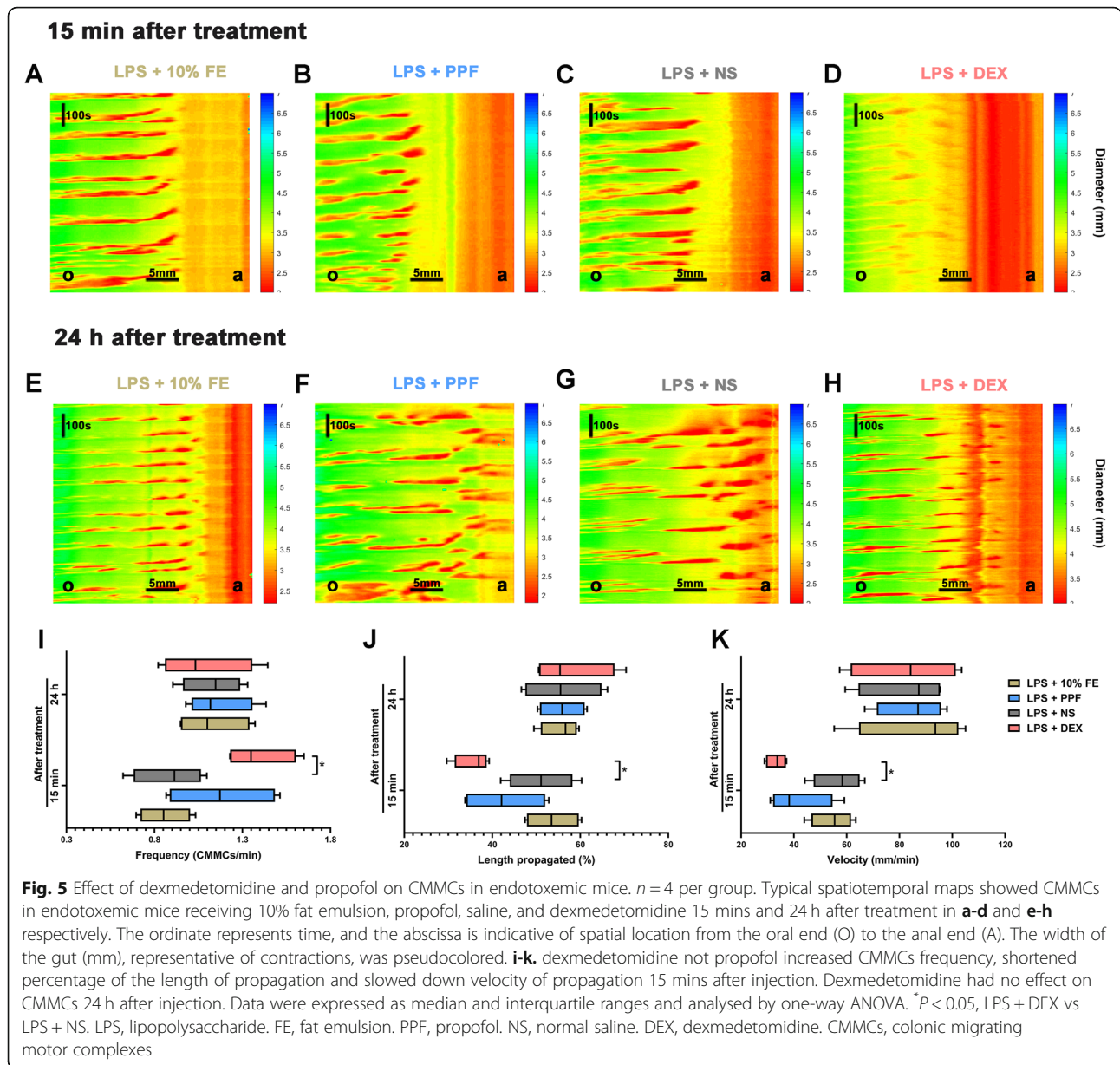
Discussion

Our results showed that deep sedation with dexmedetomidine, but not propofol suppressed motility of various parts of the GI tract including the stomach, small intestine, and colon in endotoxemic mice, whereas such inhibitory effects of dexmedetomidine recovered at 24 h after sedation. Additionally, dexmedetomidine led to heart rate reduction in endotoxemic mice.

Animal models of sepsis are generally divided into 3 categories: bacterial infection models, endotoxin models, and peritonitis models. Cecal ligation and puncture (CLP), a peritonitis model, has been considered a golden standard of sepsis research. However, this model requires an abdominal surgical procedure that may strikingly interfere with GI motility cause the induction of postoperative ileus [23]. Postoperative ileus is possible to obscure the effect of sedatives on GI motility in sepsis. Additionally, the LPS-induced endotoxin model was

more stable compared to usage of bacteria, hence we injected $5 \text{ mg} \cdot \text{kg}^{-1}$ LPS in mice to build a septic model.

Before comparing the effect of sedatives on GI motility in endotoxemic mice, the sedative depth of different doses of propofol and dexmedetomidine was assessed. Previous study demonstrated that the ED₅₀ and ED₉₅ of propofol for smooth insertion of the laryngeal mask airway were $2.9 \text{ mg} \cdot \text{kg}^{-1}$ and $3.9 \text{ mg} \cdot \text{kg}^{-1}$ respectively [24], which equaled to 35.67 and $47.97 \text{ mg} \cdot \text{kg}^{-1}$ in mice based on human equivalent dose calculation scale [25]. And $50 \text{ mg} \cdot \text{kg}^{-1}$ and $100 \text{ mg} \cdot \text{kg}^{-1}$ propofol were used to evaluate the effect on GI motility [12]. Thus, we injected $40 \text{ mg} \cdot \text{kg}^{-1}$ and $50 \text{ mg} \cdot \text{kg}^{-1}$ propofol to examine the sedative effect in endotoxemic mice. In addition, 0.5 to $1 \text{ mg} \cdot \text{kg}^{-1}$ dexmedetomidine had been reported for mice anesthesia [26]. ED₅₀ of dexmedetomidine inhibited gastrointestinal transit was $40 \mu\text{g} \cdot \text{kg}^{-1}$ in rats, it may equal to $80 \mu\text{g} \cdot \text{kg}^{-1}$ for mice [25]. As a consequence, $40 \mu\text{g} \cdot \text{kg}^{-1}$ and $80 \mu\text{g} \cdot \text{kg}^{-1}$ dexmedetomidine was selected to assess sedative depth of mice in present study. Since $40 \text{ mg} \cdot \text{kg}^{-1}$ propofol and $80 \mu\text{g} \cdot \text{kg}^{-1}$ dexmedetomidine induced comparable deep sedative in endotoxemic mice and the comfort and safety of patients who were undergoing mechanical ventilation ICU entailed deep

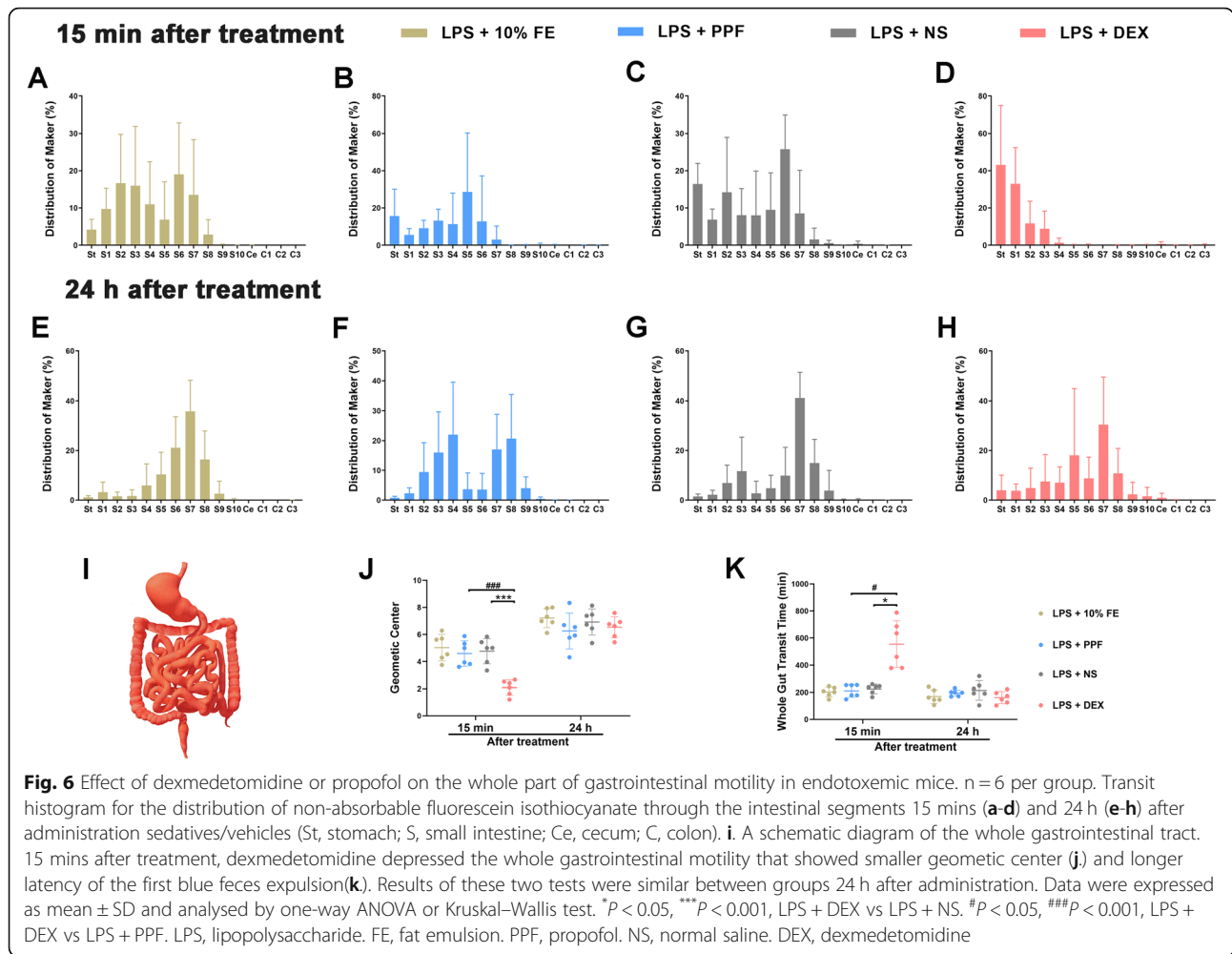


sedation [27], we employed these doses in the present study. In line with the previous study, dexmedetomidine strongly decreased heart rate [28].

As for administration route, we used a single intraperitoneal injection in present study. Though intravenous injection is more in line with clinical practice, there are practical limitations associated with the technical difficulties of intravenous administration in mice due to their small size, especially in conscious mice [29]. It was not excluded that sedative drugs had directly implication on the gut, but we believed that even intravascular administration of drugs could also act on the gut as drugs would reach gut through blood circulation soon.

We tested GI motility 15 mins and 24 h after drug administration respectively. The maximum sedation depth was reached 15 min after drug administration, therefore we thought it was the right time to access the effect of sedatives on GI motor function. And the terminal half-life of single administration of 100 mg·kg⁻¹ propofol in the mouse blood is 140.8 ± 53.55 mins [30] and the elimination half-life of DEX is 2 ~ 3 h. To figure out whether the inhibition of sedatives on GI motor function was sustained after metabolism of these sedatives, we conducted these GI motility tests 24 h after drug implement and found no sustained inhibition existed.

Although some human studies showed that GE [31] and GI motility [32] were uninfluenced by light or sub



hypnotic propofol sedation, a human study in vitro founded a dose-dependent depression of propofol on gastric and colonic muscle [33]. Inada et al showed that 50 mg·kg⁻¹ propofol weakly repressed GE while 100 mg·kg⁻¹ propofol exhibited a marked inhibitory effect on GE and GIT in mice [12]. Thus, it indicated that propofol had a dose-dependent depression on GI motility. Our study explored that, in endotoxemic mice, 40 mg·kg⁻¹ propofol was enough to reach deep sedation while had little effect on GI motility. The mechanism of propofol effect on GI motility is complicated and is still a matter of debate. There are three types of GABA receptors (GABA_A, GABA_B, GABA_C) expressed in different regions of GI tract [34]. It was verified that GABA_A involved in the effect of propofol on GI motility [35]. Few studies explored the effect of propofol on GABA_B and GABA_C receptors in respect of GI motility. In a word, the mechanism of propofol on GI motility still needs to be investigated.

The antiperistaltic effects in the current study that 80 µg·kg⁻¹ dexmedetomidine inhibited all segments of

GI tract motor function of endotoxemic mice were consistent with studies in human [13] and animals [7]. Dexmedetomidine increased the frequency of CMMCs while decreased the propagation and velocity of CMMCs in our study. It was in line with the previous study that dexmedetomidine inhibited the guinea pig ileum peristalsis whereas increased the frequency of peristalsis waves in vitro. It might due to the incomplete peristalsis from mouth to anal that triggered an increased peristalsis frequency. Dexmedetomidine is a highly selective α₂-adrenoceptor agonist, its inhibitory effect on ileum peristalsis could be prevented only by α₂-adrenoceptor antagonist yohimbine instead of α₁-adrenoceptor antagonist prazosin [7], which further indicated that the antiperistaltic effect of dexmedetomidine may due to α₂-adrenoceptor-mediated interruption of excitatory cholinergic pathways in the enteric nervous system [36] or activated inhibitory neural pathways [37]. The α_{2A} subtype in the enteric nervous system was responsible for the suppression of medetomidine on GI motility [38, 39], it might have a potential role in the inhibition of

dexmedetomidine on GI peristalsis. Besides, dexmedetomidine inhibited colon motility through a peripheral mechanism in present study, whether the central mechanism involved in this inhibition was speculative.

Conclusion

In conclusion, at a comparable deep sedative level in endotoxemic mice, dexmedetomidine, but not propofol inhibited motilities of all parts of the GI tract, however, such inhibitory effects of dexmedetomidine disappeared after 24 h. So we could speculate that this side effect is short-term, while the prognosis of patients requiring long-term sedation with sedatives remains unknown. Additionally, dexmedetomidine produced obvious heart rate reduction in endotoxemic mice. These data indicated that both propofol and dexmedetomidine can be used in patients with sepsis, while dexmedetomidine should be used with caution in patients with heart disease or gastrointestinal motility disorder. However, take species differences into consideration, this finding needs more clinic investigation to be extrapolated to the situation in humans.

Abbreviations

LPS: Lipopolysaccharide; ICU: Intensive care unit; GI: Gastrointestinal; ARRIVE: Animal research: reporting of in vivo experiments; GE: Gastric emptying; SIT: Small intestinal transit; CMMCs: Colonic migrating motor complexes; GIT: Gastrointestinal transit; WGTT: Whole gut transit time; SD: Standard deviation; CLP: Cecal ligation and puncture

Acknowledgments

Not applicable.

Authors' contributions

QW, YFG designed this study. HQC, YSL, JWM, BC, HG, HH conducted the experiments. HQC, YSL, SL, HH analysed data. HQC, YSL, SL interpreted the data. HQC, HLM Drafted the paper. All authors read and approved the final version of the manuscript.

Funding

This work was supported by the National Natural Science Foundation of China (Grants number 81774113, 81974540 and 81801899). Design of the study, collection, analysis, interpretation of data and writing were not influenced by the funding body.

Availability of data and materials

The datasets used and/or analysed during the current study are available from the corresponding author on reasonable request.

Ethics approval and consent to participate

This study was approved by the Institutional Animal Care and Use Committee of Xi'an Jiaotong University. Reference number for the ethics approval is 2019-060.

Consent for publication

Not applicable.

Competing interests

The authors declare that they have no competing interests.

Author details

¹Department of Anesthesiology & Center for Brain Science, The First Affiliated Hospital of Xi'an Jiaotong University, Xi'an 710061, Shaanxi, China.

²Department of Pharmacology, School of Basic Medical Sciences, Health Science Center, Xi'an Jiaotong University, Xi'an 710061, Shaanxi, China.

Received: 13 May 2020 Accepted: 2 September 2020

Published online: 07 September 2020

References

- Fleischmann C, Scherag A, Adhikari NK, Hartog CS, Tsaganos T, Schlattmann P, Angus DC, Reinhart K. Assessment of global incidence and mortality of hospital-treated Sepsis. Current estimates and limitations. *Am J Respir Crit Care Med.* 2016;193(3):259–72.
- Adike A, Quigley EMM. Gastrointestinal motility problems in critical care: a clinical perspective. *J Dig Dis.* 2014;15(7):335–44.
- Bauer AJ, Schwarz NT, Moore BA, Türler A, Kalf J. Ileus in critical illness: mechanisms and management. *Curr Opin Crit Care.* 2002;8(2):152–7.
- Levy MM, Dellinger RP, Townsend SR, Linde-Zwirble WT, Marshall JC, Bion J, Schorr C, Artigas A, Ramsay G, Beale R, et al. The surviving Sepsis campaign: results of an international guideline-based performance improvement program targeting severe sepsis. *Crit Care Med.* 2010;38(2):367–74.
- Cawcutt KA, Peters SG. Severe sepsis and septic shock: clinical overview and update on management. *Mayo Clin Proc.* 2014;89(11):1572–8.
- Rhodes A, Evans LE, Alhazzani W, Levy MM, Antonelli M, Ferrer R, Kumar A, Sevransky JE, Sprung CL, Nunnally ME, et al. Surviving Sepsis campaign: international guidelines for Management of Sepsis and Septic Shock: 2016. *Intensive Care Med.* 2017;43(3):304–77.
- Herbert MK, Roth-Goldbrunner S, Holzer P, Roewer N. Clonidine and dexmedetomidine potently inhibit peristalsis in the Guinea pig ileum in vitro. *Anesthesiology.* 2002;97(6):1491–9.
- Reintam Blaser A, Jakob SM, Starkopf J. Gastrointestinal failure in the ICU. *Curr Opin Crit Care.* 2016;22(2):128–41.
- Mostafa SM, Bhandari S, Ritchie G, Grattton N, Wenstone R. Constipation and its implications in the critically ill patient. *Br J Anaesth.* 2003;91(6):815–9.
- McKeage K, Perry CM. Propofol: a review of its use in intensive care sedation of adults. *CNS Drugs.* 2003;17(4):235–72.
- Diss LB, Villeneuve S, Pearce KR, Yeoman MS, Patel BA. Region specific differences in the effect of propofol on the murine colon result in dysmotility. *Auton Neurosci.* 2019;219:19–24.
- Inada T, Asai T, Yamada M, Shingu K. Propofol and midazolam inhibit gastric emptying and gastrointestinal transit in mice. *Anesth Analg.* 2004;99(4):1102.
- Irola T, Vilo S, Aantaa R, Wendelin-Saarenhovi M, Neuvonen PJ, Scheinin M, Olkola KT. Dexmedetomidine inhibits gastric emptying and oro-caecal transit in healthy volunteers. *Br J Anaesth.* 2011;106(4):522–7.
- Kim N, Yoo YC, Lee SK, Kim H, Ju HM, Min KT. Comparison of the efficacy and safety of sedation between dexmedetomidine-remifentanyl and propofol-remifentanyl during endoscopic submucosal dissection. *World J Gastroenterol.* 2015;21(12):3671–8.
- Hong G-S, Zillekens A, Schneiker B, Pantelis D, de Jonge WJ, Schaefer N, Kalf J, Wehner S. Non-invasive transcutaneous auricular vagus nerve stimulation prevents postoperative ileus and endotoxemia in mice. *Neurogastroenterol Motil.* 2019;31(3):e13501.
- Li Y, Wu Y, Li R, Wang C, Jia N, Zhao C, Wen A, Xiong L. Propofol regulates the surface expression of GABAA receptors: implications in synaptic inhibition. *Anesth Analg.* 2015;121(5):1176–83.
- De Winter BY, Bredenoord AJ, Van Nassauw L, De Man JG, De Schepper HU, Timmermans JP, Pelckmans PA. Involvement of afferent neurons in the pathogenesis of endotoxin-induced ileus in mice: role of CGRP and TRPV1 receptors. *Eur J Pharmacol.* 2009;615(1–3):177–84.
- Nasser Y, Fernandez E, Keenan CM, Ho W, Oland LD, Tibbles LA, Schemann M, MacNaughton WK, Ruhl A, Sharkey KA. Role of enteric glia in intestinal physiology: effects of the gliotoxin fluorocitrate on motor and secretory function. *Am J Physiol Gastrointest Liver Physiol.* 2006;291(5):G912–27.
- Hoffman JM, McKnight ND, Sharkey KA, Mawe GM. The relationship between inflammation-induced neuronal excitability and disrupted motor activity in the Guinea pig distal colon. *Neurogastroenterol Motil.* 2011;23(7):673–e279.
- Swaminathan M, Hill-Yardin E, Ellis M, Zygorodimos M, Johnston LA, Gwynne RM, Bornstein JC. Video imaging and spatiotemporal maps to analyze gastrointestinal motility in mice. *J Vis Exp.* 2016;108:53828.
- Moore BA, Manthey CL, Johnson DL, Bauer AJ. Matrix metalloproteinase-9 inhibition reduces inflammation and improves motility in murine models of

- postoperative ileus. *Gastroenterology*. 2011;141(4):1283–92. 1292 e1281–1284.
22. Nagakura Y, Naitoh Y, Kamato T, Yamano M, Miyata K. Compounds possessing 5-HT₃ receptor antagonistic activity inhibit intestinal propulsion in mice. *Eur J Pharmacol*. 1996;311(1):67–72.
 23. De Winter B-Y, De Man J-G. Interplay between inflammation, immune system and neuronal pathways: effect on gastrointestinal motility. *World J Gastroenterol*. 2010;16(44):5523–35.
 24. Yoo JY, Kwak HJ, Kim YB, Park CK, Lee SY, Kim JY. The effect of dexmedetomidine pretreatment on the median effective bolus dose of propofol for facilitating laryngeal mask airway insertion. *J Anesth*. 2017;31(1): 11–7.
 25. Nair AB, Jacob S. A simple practice guide for dose conversion between animals and human. *J Basic Clinical Pharm*. 2016;7(2):27–31.
 26. Gargiulo S, Greco A, Gramanzini M, Esposito S, Affuso A, Brunetti A, Vesce G. Mice anesthesia, analgesia, and care, part I: anesthetic considerations in preclinical research. *ILAR J*. 2012;53(1):E55–69.
 27. Coursin DB, Skrobik Y. What is safe sedation in the ICU? *N Engl J Med*. 2019; 380(26):2577–8.
 28. Shehabi Y, Howe BD, Bellomo R, Arabi YM, Bailey M, Bass FE, Bin Kadiman S, McArthur CJ, Murray L, Reade MC, et al. Early sedation with Dexmedetomidine in critically ill patients. *N Engl J Med*. 2019;380(26):2506–17.
 29. Alves HC, Valentim AM, Olsson IA, Antunes LM. Intraperitoneal propofol and propofol fentanyl, sufentanil and remifentanil combinations for mouse anaesthesia. *Lab Anim*. 2007;41(3):329–36.
 30. Li Lin A, Shangari N, Chan TS, Ramirez D, O'Brien PJ. Herbal monoterpene alcohols inhibit propofol metabolism and prolong anesthesia time. *Life Sci*. 2006;79(1):21–9.
 31. Chassard D, Lansiaux S, Duflo F, Mion F, Bleyzac N, Debon R, Allouchiche B. Effects of subhypnotic doses of propofol on gastric emptying in volunteers. *Anesthesiology*. 2002;97(1):96–101.
 32. Freye E, Sundermann S, Wilder-Smith OH. No inhibition of gastro-intestinal propulsion after propofol- or propofol/ketamine-N₂O/O₂ anaesthesia. A comparison of gastro-caecal transit after isoflurane anaesthesia. *Acta Anaesthesiol Scand*. 1998;42(6):664–9.
 33. Lee TL, Ang SB, Dambisya YM, Adaikan GP, Lau LC. The effect of propofol on human gastric and colonic muscle contractions. *Anesth Analg*. 1999; 89(5):1246–9.
 34. Auteri M, Zizzo MG, Serio R. GABA and GABA receptors in the gastrointestinal tract: from motility to inflammation. *Pharmacol Res*. 2015;93: 11–21.
 35. Koutsoviti-Papadopoulou M, Akahori F, Kounenis G, Nikolaidis E. Propofol's biphasic effect on GABA(a)-receptor-mediated response of the isolated Guinea pig ileum. *Pharmacol Res*. 1999;40(4):313–7.
 36. De Ponti F, Giaroni C, Cosentino M, Lecchini S, Frigo G. Adrenergic mechanisms in the control of gastrointestinal motility: from basic science to clinical applications. *Pharmacol Ther*. 1996;69(1):59–78.
 37. Furness JB. Types of neurons in the enteric nervous system. *J Auton Nerv Syst*. 2000;81(1–3):87–96.
 38. Fulop K, Zadori Z, Ronai AZ, Gyires K. Characterisation of alpha₂-adrenoceptor subtypes involved in gastric emptying, gastric motility and gastric mucosal defence. *Eur J Pharmacol*. 2005;528(1–3):150–7.
 39. Scheibner J, Trendelenburg AU, Hein L, Starke K, Blandizzi C. Alpha 2-adrenoceptors in the enteric nervous system: a study in alpha 2A-adrenoceptor-deficient mice. *Br J Pharmacol*. 2002;135(3):697–704.

Publisher's Note

Springer Nature remains neutral with regard to jurisdictional claims in published maps and institutional affiliations.

Ready to submit your research? Choose BMC and benefit from:

- fast, convenient online submission
- thorough peer review by experienced researchers in your field
- rapid publication on acceptance
- support for research data, including large and complex data types
- gold Open Access which fosters wider collaboration and increased citations
- maximum visibility for your research: over 100M website views per year

At BMC, research is always in progress.

Learn more biomedcentral.com/submissions

