

RESEARCH ARTICLE

Open Access



# $\alpha\beta$ -Dehydrocurvularin isolated from the fungus *Aspergillus welwitschiae* effectively inhibited the behaviour and development of the root-knot nematode *Meloidogyne graminicola* in rice roots

Chao Xiang<sup>1</sup>, Ying Liu<sup>1,2</sup>, Shi-Ming Liu<sup>1</sup>, Ya-Fei Huang<sup>3</sup>, Ling-An Kong<sup>1</sup>, Huan Peng<sup>1</sup>, Mao-Yan Liu<sup>1,4</sup>, Jing Liu<sup>4</sup>, De-Liang Peng<sup>1\*</sup> and Wen-Kun Huang<sup>1\*</sup>

## Abstract

**Background:** The root-knot nematode *Meloidogyne graminicola* has become a serious threat to rice production as a result of the cultivation changes from transplanting to direct seeding. The nematicidal activity of *Aspergillus welwitschiae* have been investigated in vitro, and the disease control efficacy of the active compound has been evaluated under greenhouse and field conditions.

**Results:** The active compound  $\alpha\beta$ -dehydrocurvularin ( $\alpha\beta$ -DC), isolated by nematicidal assay-directed fractionation, showed significant nematicidal activity against *M. graminicola*, with a median lethal concentration ( $LC_{50}$ ) value of  $122.2 \mu\text{g mL}^{-1}$ .  $\alpha\beta$ -DC effectively decreased the attraction of rice roots to nematodes and the infection of nematodes and also suppressed the development of nematodes under greenhouse conditions. Moreover,  $\alpha\beta$ -DC efficiently reduced the root gall index under field conditions.

**Conclusions:** To our knowledge, this is the first report to describe the nematicidal activity of  $\alpha\beta$ -DC against *M. graminicola*. The results obtained under greenhouse and field conditions provide a basis for developing commercial formulations from  $\alpha\beta$ -DC to control *M. graminicola* in the future.

**Keywords:** *Meloidogyne graminicola*,  $\alpha\beta$ -dehydrocurvularin, Nematicidal activity, Attractiveness, Development, Behaviour

## Background

The root-knot nematode (RKN) *Meloidogyne graminicola* is considered one of the most devastating pests on rice, especially in southern Africa, America and Southeast Asia [12, 19, 24]. This nematode penetrates rice roots and

induces the formation of giant cells as the nutrition resource throughout its life cycle, with a typical symptom of hook-like galls on the roots [20]. *M. graminicola* impedes the uptake of water and nutrients due to the formation of giant cells in rice roots and causes significant yield losses in most rice-producing areas. The annual yield loss caused by *M. graminicola* is estimated at 16%~87% [8, 29, 32, 38]. *M. graminicola* is difficult to control because it has a short generation and high reproduction rate [11].

\* Correspondence: [dlpeng@ipccaas.cn](mailto:dlpeng@ipccaas.cn); [wkhuang2002@163.com](mailto:wkhuang2002@163.com)

<sup>1</sup>State Key Laboratory for Biology of Plant Diseases and Insect Pests, Institute of Plant Protection, Chinese Academy of Agricultural Sciences, Beijing 100193, People's Republic of China

Full list of author information is available at the end of the article



© The Author(s). 2020 **Open Access** This article is licensed under a Creative Commons Attribution 4.0 International License, which permits use, sharing, adaptation, distribution and reproduction in any medium or format, as long as you give appropriate credit to the original author(s) and the source, provide a link to the Creative Commons licence, and indicate if changes were made. The images or other third party material in this article are included in the article's Creative Commons licence, unless indicated otherwise in a credit line to the material. If material is not included in the article's Creative Commons licence and your intended use is not permitted by statutory regulation or exceeds the permitted use, you will need to obtain permission directly from the copyright holder. To view a copy of this licence, visit <http://creativecommons.org/licenses/by/4.0/>. The Creative Commons Public Domain Dedication waiver (<http://creativecommons.org/publicdomain/zero/1.0/>) applies to the data made available in this article, unless otherwise stated in a credit line to the data.

In the past few decades, chemical control (e.g., organophosphates, carbamates and chlorpyrifos) was the primary means for managing this nematode [15]. Soil application of phorate and fosthiazate before seeding and soaking rice seedlings in carbosulfan and chlorpyrifos solutions both significantly reduced root galling on rice plants [33]. However, due to the side effects of these chemicals on the environment and humans, many chemical nematicides have been withdrawn or restricted [3, 6]. Methyl bromide was completely phased out in 2015 because of its negative effect on stratospheric ozone [1]. Sulfuryl fluoride might play an important role in global warming because of its chemical stability [39]. In addition, policies have been designed to support environmentally friendly farming practices in many countries, and eco-friendly alternatives are increasingly demanded. Thus, much research has aimed to identify nematicidal metabolites from antagonistic microorganisms to control RKNs [10, 16, 35]. However, few commercial products have been developed and applied in agriculture. Therefore, the identification of antagonists is necessary for the control of RKN and its commercialization.

Biological control of endophytic fungi has been demonstrated to be effective in reducing the penetration and reproduction of plant-parasitic nematodes [21, 22, 25, 40]. Le et al. [21, 22] reported that the root-galling severity of *M. graminicola* was reduced by 38% with treatment of *Trichoderma* spp. and that *M. graminicola* penetration was significantly reduced by 55% by endophytic *Fusarium moniliforme* colonization. *Aspergillus* species are very common in soils, and many scientific studies have indicated that metabolites isolated from *Aspergillus* spp. have high potential for plant-parasitic nematode management [2]. Li et al. [23] found that *A. niger* could reduce *M. incognita* populations and promote tomato growth. According to Jin et al. [13], metabolites of *A. niger* caused 90% mortality of second-stage juveniles and remarkably reduced the penetration of *Heterodera glycines* in soybean roots.  $\alpha\beta$ -Dehydrocurvularin ( $\alpha\beta$ -DC) was first identified as a metabolite of *A. aureofulgens* by Caputo and Viola [4]. Previous studies showed that  $\alpha\beta$ -DC isolated from different microorganisms had various antimicrobial activities and nematicidal activities [4, 18].  $\alpha\beta$ -DC also showed weak activity against gram-positive and gram-negative bacteria [4], while  $\beta\gamma$ -DC could cause 35% mortality in *Pratylenchus penetrans* at a concentration of  $300 \mu\text{g mL}^{-1}$  [18]. However, the nematicidal activity and the action mode of  $\alpha\beta$ -DC against RKN *M. graminicola* have not yet been determined.

Therefore, further insights into the nematicidal activity of  $\alpha\beta$ -DC against *M. graminicola* were obtained in this study, which aimed to identify a potential alternative to control *M. graminicola*. To provide further evidence of the effects of  $\alpha\beta$ -DC on *M. graminicola* and to elucidate the mechanism of action, the effects of  $\alpha\beta$ -DC on nematode survival,

giant cell development, locomotion behaviour and reproductive activity were evaluated at room temperature, and the infectivity of nematodes to rice plants was also evaluated under field conditions in this study.

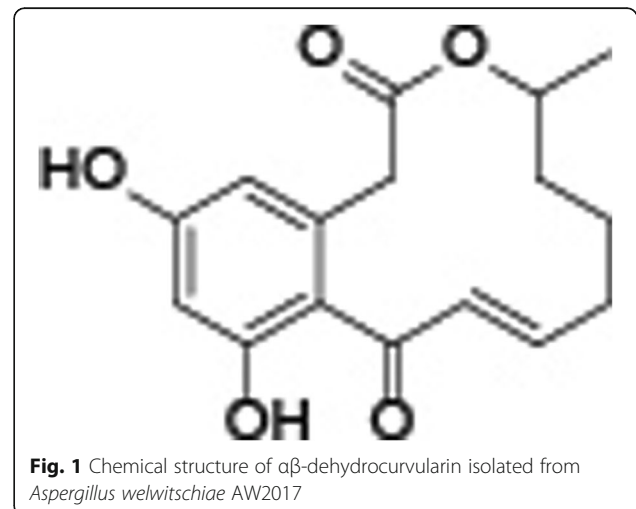
## Results

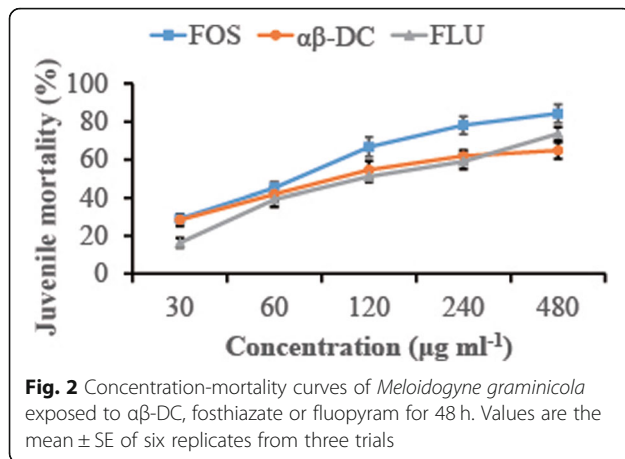
### Identification of $\alpha\beta$ -dehydrocurvularin from *A. welwitschiae*

In total, 15.2 g crude filtrates were extracted by  $\text{CHCl}_3/\text{MeOH}$  eluent from fermentations of *A. welwitschiae* and were purified by column chromatography on silica gel. Then, 285 mg of the active fraction was repeatedly crystallized from  $\text{Me}_2\text{CO}/\text{EtOAc}$  and produced as a white powder. By comparing the physicochemical properties with those reported previously, the major nematicidal compounds from *A. welwitschiae* were identified as  $\alpha\beta$ -dehydrocurvularin ( $\alpha\beta$ -DC),  $\beta\gamma$ -dehydrocurvularin and 7-oxocurvularin. Among three purified compounds,  $\alpha\beta$ -DC showed the best nematicidal activity based on a preliminary bioassay (data not shown) and was synthesized for next experiments. The chemical structure of  $\alpha\beta$ -DC was shown in Fig. 1.

### Nematicidal effects of $\alpha\beta$ -DC on *M. graminicola* juveniles

To identify the nematicidal effect of  $\alpha\beta$ -DC on the *M. graminicola* juveniles,  $\text{LC}_{50}$  of  $\alpha\beta$ -DC on this nematode was analyzed and compared with two formulated nematicides. The mortality curves of *M. graminicola* exposed to fosthiazate (FOS),  $\alpha\beta$ -DC and fluopyram (FLU) were investigated (Fig. 2). The  $\text{LC}_{50}$  values of FOS,  $\alpha\beta$ -DC and FLU were 89.1, 122.2 and  $139.6 \mu\text{g mL}^{-1}$ , respectively. It was remarkable that FOS displayed higher nematicidal activity than  $\alpha\beta$ -DC and FLU ( $P \leq 0.05$ ), although at the lower concentration ( $\leq 120 \mu\text{g mL}^{-1}$ ) no difference could be observed between these compounds. No significant difference was observed between  $\alpha\beta$ -DC and FLU, except at the concentration of  $30 \mu\text{g mL}^{-1}$ . These data suggested that the nematicidal activity of  $\alpha\beta$ -





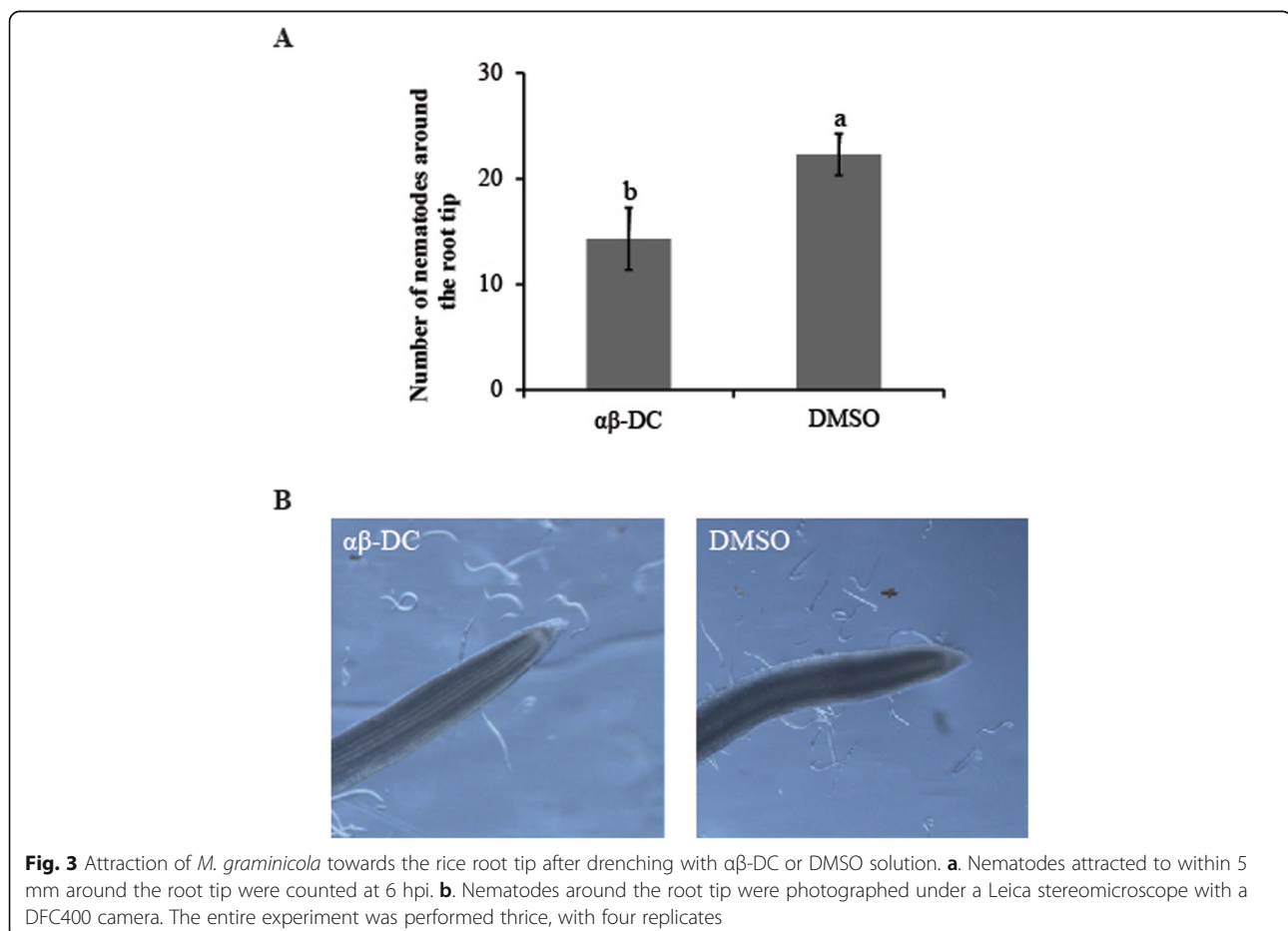
DC was similar to that of FLU but was significantly lower than that of FOS at tested concentrations.

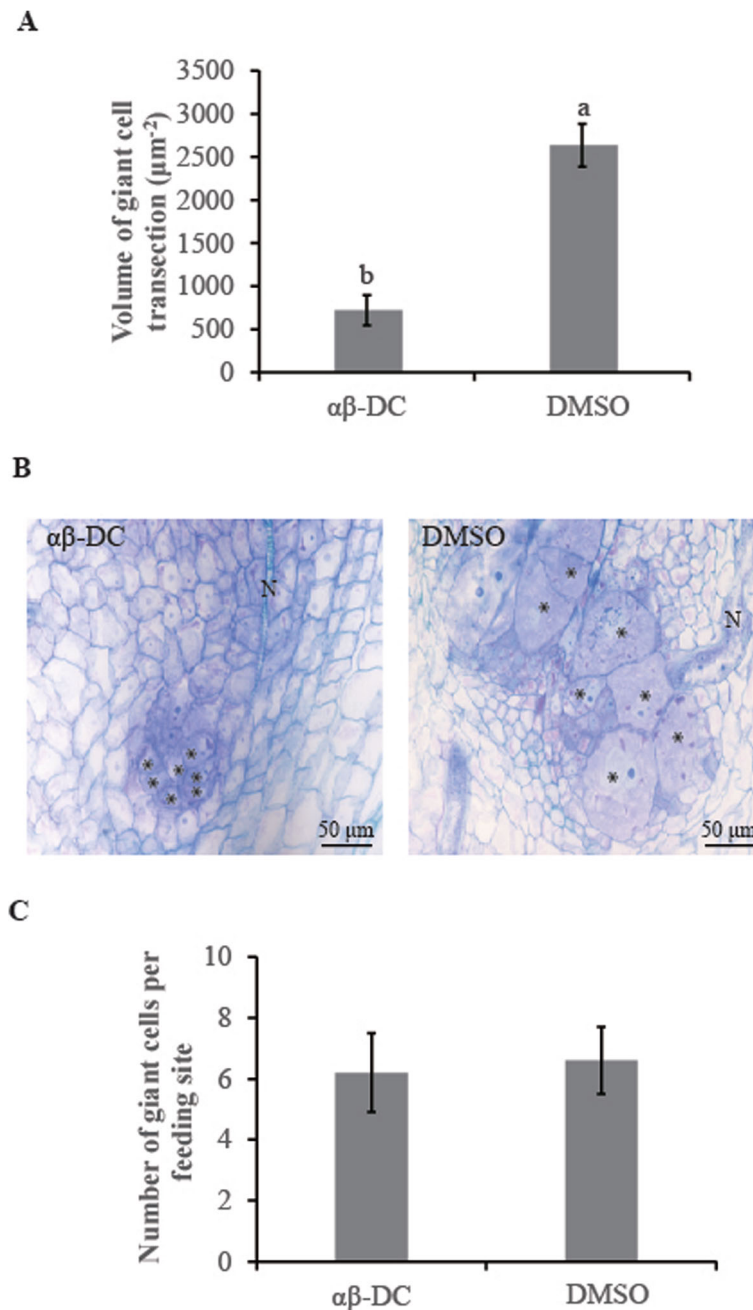
#### Effect of $\alpha\beta$ -DC on the attractiveness of rice roots to *M. graminicola* and giant cell development

To determine whether  $\alpha\beta$ -DC has a direct effect on the attractiveness of roots to *M. graminicola*, we

counted the numbers of nematodes attracted to within 5 mm around the roots treated with  $\alpha\beta$ -DC or DMSO solution. At 6 h post inoculation (hpi), the numbers of nematodes attracted to the  $\alpha\beta$ -DC-treated root tips ( $14.3 \pm 2.9$ ) were significantly lower than those attracted to the control roots ( $22.3 \pm 2.0$ ) ( $P \leq 0.05$ ) (Fig. 3a and b). This result indicates that the tested chemicals prevented the attraction of rice roots to *M. graminicola*.

A microscopic investigation of giant cells revealed a significant difference in the morphological characteristics of feeding sites in the  $\alpha\beta$ -DC-treated roots versus the non-treated roots. The volume of giant cell transections in the  $\alpha\beta$ -DC-treated roots ( $720.3 \pm 176.2 \mu\text{m}^2$ ) was significantly smaller than that in the DMSO-treated roots ( $2636.1 \pm 250.2 \mu\text{m}^2$ ) ( $P \leq 0.05$ ) (Fig. 4a and b). However, no significant differences were observed in the numbers of giant cells per feeding site between the  $\alpha\beta$ -DC-treatment ( $6.2 \pm 1.3$ ) and DMSO-treated control ( $6.6 \pm 1.1$ ) (Fig. 4c). These data demonstrate that the  $\alpha\beta$ -DC treatment had a negative effect on giant cell development, thus decreasing the supply of nutrients to the nematodes.





**Fig. 4** Analysis of giant cell structures in rice root galls after treatment with αβ-DC or DMSO solution. **a** Volume of each giant cell transection. **b.** Giant cells (\*) induced by the nematode (N) in αβ-DC-amended root galls and DMSO solution were stained at 7 dpi with toluidine blue solution and photographed under an Olympus DP74 (bar = 50 µm). N denotes the nematode. **c.** Numbers of giant cells at each feeding site. The experiment was repeated twice, with ten galls in each treatment

#### Effect of αβ-DC on the development and infectivity of nematodes

To evaluate the effect of αβ-DC on *M. graminicola* infectivity and development, nematodes in rice plants drenched with αβ-DC, FOS, FLU or DMSO solution, respectively, were counted in a greenhouse experiment. Drenching with αβ-DC significantly decreased nematode

penetration compared with control plants. At 14 day post inoculation (dpi), the observation of nematodes in fuchsin-stained roots showed that the nematode numbers in the FOS treatment ( $36.6 \pm 4.9$ ) were significantly lower than those in the αβ-DC treatment ( $55.4 \pm 7.7$ ) and FLU treatment ( $52.7 \pm 7.0$ ), and all the treatments resulted in a significant reduction in total nematode

numbers compared to the control roots ( $113.4 \pm 12.5$ ) ( $P \leq 0.05$ ) (Fig. 5a). These data suggest that drenching with  $\alpha\beta$ -DC decreased nematode infection in rice roots.

According to their normally developmental progression, most J2s of *M. graminicola* will develop into female-stage at 14 dpi. Thus, the percentage of female-stage nematodes among observed nematodes in rice roots will be used to assess whether nematode development is delayed or not. As shown in Fig. 5b and c, the percentage of females in  $\alpha\beta$ -DC-treated roots ( $77.8 \pm 6.7\%$ ) was significantly lower than that in control roots ( $95.4 \pm 4.3\%$ ) ( $P \leq 0.05$ ), where a higher ratio of J3/J4s was observed in  $\alpha\beta$ -DC-treated plants ( $22.2 \pm 4.2\%$ ) than that in control plants ( $4.6 \pm 0.9\%$ ). These results implied that the development of nematodes in  $\alpha\beta$ -DC-treated plants was slightly delayed compared with the control plants. However, no significant difference in the percentage of females was observed among the control plants, FOS-treated plants and FLU-treated plants. These data suggest that drenching with  $\alpha\beta$ -DC delayed nematode development inside the rice roots.

Root galls are typically a direct reflection of nematode infection levels and always correlate with the susceptibility of rice varieties to nematodes [42]. To evaluate the effect of  $\alpha\beta$ -DC on the infection of nematodes under field conditions, a field experiment was conducted on a commercial rice base that had been naturally infested with *M. graminicola* for more than 10 years. Field experiments also demonstrated the negative effect of  $\alpha\beta$ -DC on the infectivity of *M. graminicola*. At 50 d after direct seeding, the root gall index of rice roots was significantly decreased in all the treatments (Fig. 6a). The lowest root gall index was observed in the FOS treatment ( $21.5 \pm 4.1$ ), which significantly differed from the FLU treatment ( $31.7 \pm 6.5$ ) and the  $\alpha\beta$ -DC treatment ( $38.4 \pm 3.6$ ). No significant differences in the root gall index were observed between  $\alpha\beta$ -DC and FLU treatments. The highest root gall index was observed in the DMSO control ( $65.8 \pm 8.4$ ). Among the three chemical treatments, the FOS treatment exhibited the highest control efficacy ( $67.3 \pm 8.6\%$ ) in reducing the root gall index, followed by the FLU treatment ( $51.8 \pm 9.5\%$ ), while the  $\alpha\beta$ -DC treatment showed the lowest control efficacy ( $41.6 \pm 7.4$ ) (Fig. 6b). These data suggest that drenching with  $\alpha\beta$ -DC markedly decreased the infection of *M. graminicola* in rice fields.

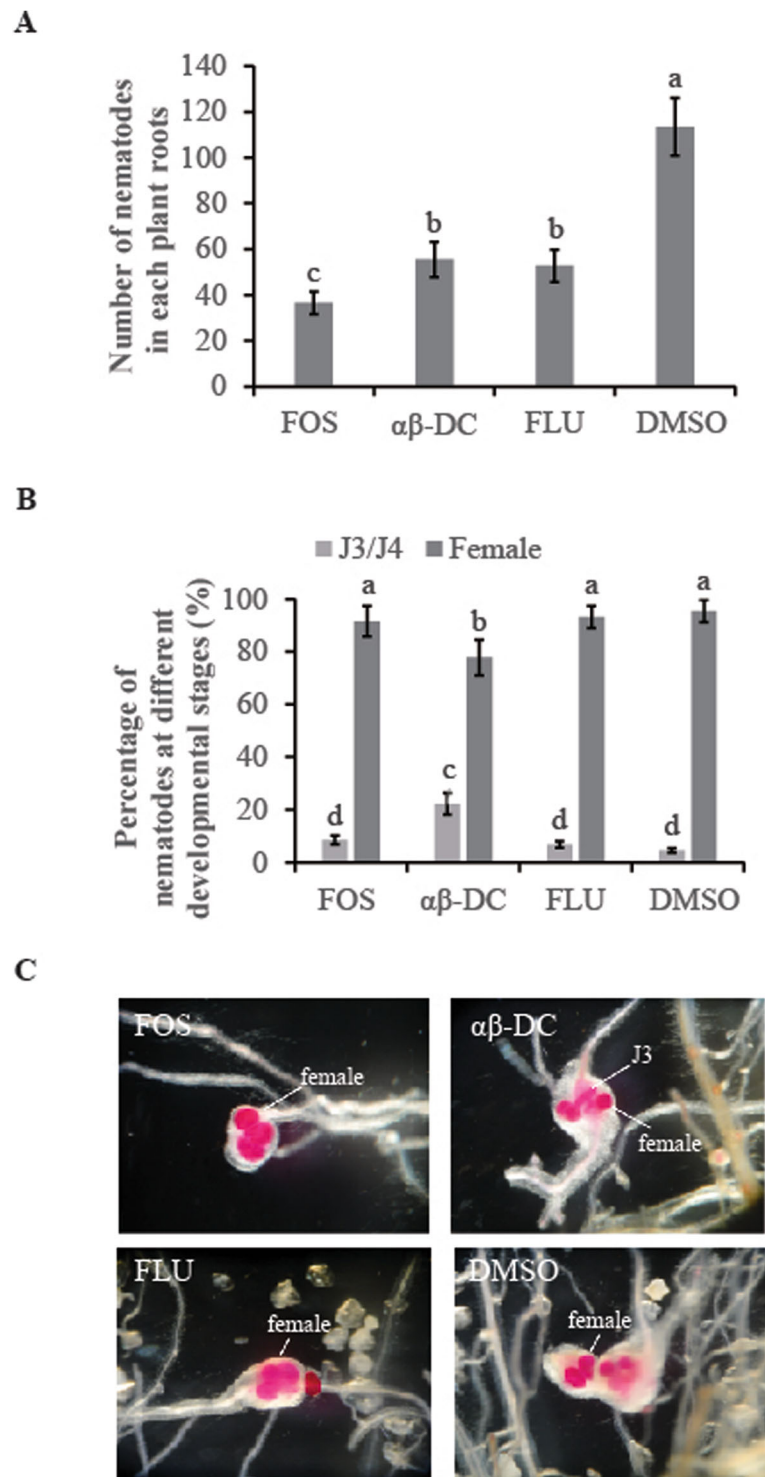
## Discussion

The root-knot nematode *M. graminicola* has been considered to be a serious threat to rice production with the transformation of cultivation modes from transplanting to direct seeding. Consequently, new biologically active metabolites are required to qualify the increasing demand for controlling *M. graminicola*. In the present

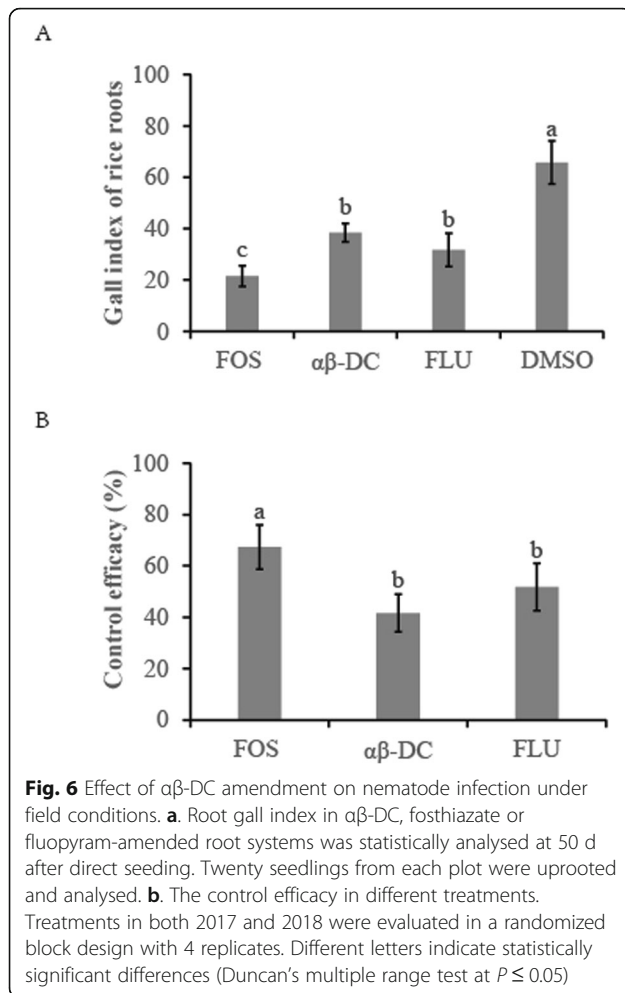
study, we demonstrated that  $\alpha\beta$ -DC extracted from *A. welwitschiae* was toxic to *M. graminicola* juveniles. The application of  $\alpha\beta$ -DC decreased the attractiveness of rice roots to nematodes, reduced nematode infection and retarded the development of nematodes in rice roots. These results indicate that the natural product  $\alpha\beta$ -DC isolated from *A. welwitschiae* may be a highly promising source of chemicals to manage *M. graminicola*. To our knowledge, this is the first report to detail the suppression effect of  $\alpha\beta$ -DC on *M. graminicola*.

After measurement of the toxic effect of this compound on nematodes, further research was conducted to determine the action mode of  $\alpha\beta$ -DC, with analyses of nematode infectivity, development and attraction behaviour after application of  $\alpha\beta$ -DC. To date, only a few host- or non-host-specific compounds are known to mediate the attractiveness of crops to nematodes [7, 22, 28]. Diez and Dusenbery [7] observed that carbon dioxide or amino acids helped RKN *M. incognita* to trace tomato roots. In our previous research, we found that  $\alpha\beta$ -DC might inhibit the motility of the nematode in a chamber experiment [24]. The inoculation of 2-week-old seedlings with *A. welwitschiae* filtrates reduced the attractiveness of rice roots to *M. graminicola*, resulting in ca. 40% reduction in juveniles migrating to 1.5–4.5 cm from rice roots. Based on the present research, it is evident that the application of  $\alpha\beta$ -DC significantly decreased the attractiveness of rice roots to *M. graminicola*, thus hindered nematode invasion and subsequent infection. Le et al. [22] observed that the root exudates from *F. moniliforme* Fe14-treated plants decreased the attractiveness of *M. graminicola* to host roots. However, root exudates from *Pseudomonas fluorescens*-treated plants had no effects on the attractiveness of cyst nematode *H. schachtii* in sugar beet [28]. Therefore, the principle method by which nematodes locate different host roots remains to be discovered.

As previously reported, dehydrocurvularin is a unique compound produced by *Aspergillus* spp. and has various antimicrobial activities and nematocidal activities [4, 18, 34]. Kusano et al. [18] reported that  $\beta\gamma$ -DC caused a mortality of 35% in *Pratylenchus* spp. at a concentration of  $300 \mu\text{g mL}^{-1}$ . In the present study, our experimental results indicated that  $\alpha\beta$ -DC had significant nematocidal activity against *M. graminicola* in an in vitro test, with an  $\text{LC}_{50}$  of approximately  $122.2 \mu\text{g mL}^{-1}$ , which is similar to the effect of the chemical nematocide fluopyrum. However, the nematocidal activity of  $\alpha\beta$ -DC against J2s of *M. graminicola* was significantly higher than that of  $\beta\gamma$ -DC against *P. penetrans*. These results strongly suggested that the nematocidal activity of  $\alpha\beta$ -DC was closely related to its strong arrest of infection. Therefore,  $\alpha\beta$ -DC can be used as a promising biopesticide for the control of RKN.



**Fig. 5** Effect of αβ-DC amendment on nematode infection and development under greenhouse conditions. **a.** Nematodes in each αβ-DC, fosthiazate or fluopyram-amended root system were counted at 14 dpi. Drenching with DMSO solution was used as a control. **b.** The ratio of nematodes in rice roots at different developmental stages is the value of the numbers of nematodes in different life stages (female or J3/J4) divided by the total numbers of nematodes in roots. **c.** Nematodes in root galls were stained with acid fuchsin and photographed under a Leica stereomicroscope with a DFC400 camera. The bars in the different graphs represent the mean ± SE of data from three independent biological replicates, each containing 6 individual plants. Different letters indicate statistically significant differences (Duncan's multiple range test at  $P \leq 0.05$ )



The slowing reproduction of *M. graminicola* in the greenhouse experiment also indicated that αβ-DC retarded nematode development in rice roots. In previous investigations, some chemicals have been demonstrated to arrest larval development [30]. Exogenous chemicals (e.g., benomyl, nocodazole) or starvation affected cellular processes in the embryo, larvae or adult germline of *Caenorhabditis elegans*. Furthermore, Kearns et al. [14] found that fluensulfone suppressed the development of *C. elegans* by interfering with larval moulting. However, the mechanism underlying the arrested development caused by αβ-DC remains unclear. In the present research, the volume of giant cell transections in the αβ-DC-treated roots was significantly lower than that in the non-treated roots. Based on the morphological changes of giant cells, we speculated that drenching with αβ-DC retarded the development of giant cells, which might decrease the food supply of nematodes and thus suppress the growth, development and cell cycle progression of *M. graminicola*. However, the exact action mechanism of αβ-DC against nematode development remains to be verified in the future.

With the banned use of many chemical nematicides, searches for biological control agents and more environmentally benign control methods are ongoing [36, 37]. In the present field experiment, the drenching of αβ-DC significantly decreased the root gall index of rice roots, with the control efficacy as high as 40% in controlling *M. graminicola*, which was similar to the effect of chemical fluopyrum. This suggests that αβ-DC can remarkably decrease the infection of *M. graminicola* in rice fields.

Based on the results of this study, αβ-DC exhibited significant nematicidal activity against *M. graminicola* and provided substantial control of RKN in the field, which implies that αβ-DC will be a promising control agent for *M. graminicola*. The mode of its action was also elucidated with analyses of nematode infectivity, development and attraction behaviour. However, further research is required to determine its effect on crops and the environment and to then develop commercial formulations with high efficacy and low cost in farm practices.

## Conclusion

To our knowledge, this is the first report to describe the nematicidal activity of αβ-DC against *M. graminicola*. αβ-DC effectively decreased the infection of nematodes, and suppressed the behaviour and development of nematodes in rice roots, which provide a basis for developing commercial formulations from αβ-DC to control *M. graminicola* in the future.

## Methods

### Identification of nematicidal compounds from *A. welwitschiae*

The *A. welwitschiae* strain AW2017 was cultured on potato dextrose broth (PDB) medium (50 L) at 25 °C for 5 d [24]. The nematicidal compounds were isolated from AW2017 metabolites as described by Kusano et al. [18] with minor modifications. Briefly, the culture filtrate was extracted with CHCl<sub>3</sub>/MeOH eluent and evaporated under reduced pressure. The crude material was purified by column chromatography on silica gel, and the active fractions were repeatedly crystallized from Me<sub>2</sub>CO/EtoAc to produce nematicidal compounds, which were used to analyse its nematicidal activities simultaneously. Final products were identified by comparing the physicochemical properties with those reported previously [4, 18, 34]. All the chemicals used in the present research were purchased from Sigma-Aldrich (China).

### Rice culture and propagation of the nematode

Rice seeds (*Oryza sativa* cv. Nipponbare) were originally obtained from the US Department of Agriculture (GSOR-100) and multiplied in Hunan Province, China.

Seeds were soaked in 5.25% sodium hypochlorite for 5 min and germinated at room temperature ( $25 \pm 4^\circ\text{C}$ ) for 4 d. One germinated seed was sown in a polyvinylchloride (PVC) tube containing synthetic absorbent polymer (SAP) [43]. Rice seedlings grew in a greenhouse and were irrigated with 20 ml of Hoagland's solution twice per week at  $28 \pm 2^\circ\text{C}$  with 70–75% relative humidity.

The *M. graminicola* population was propagated on the susceptible rice variety Nipponbare at  $28 \pm 2^\circ\text{C}$ . Nematode eggs were separated from the root galls and hatched in a 75- $\mu\text{m}$  sieve at room temperature for 3–5 d. Hatched second-stage juvenile (J2) suspensions were filtered through a 25- $\mu\text{m}$  sieve and resuspended in distilled water at approximately 200 nematodes  $\text{mL}^{-1}$  for the subsequent experiments [27, 43].

#### Nematicidal activity of $\alpha\beta$ -DC against *M. graminicola* juveniles

To test the larvicidal activity of  $\alpha\beta$ -DC, approximately 200 hatched J2 individuals were added to each well of 24-well plates containing 1 ml of  $\alpha\beta$ -DC solution at 480, 240, 120, 60, and 30  $\mu\text{g mL}^{-1}$ . Formulated fosthiazate emulsifiable concentrate (486  $\text{mg mL}^{-1}$  EC) and fluopyram suspension concentrate (417  $\text{mg mL}^{-1}$  SC) were also diluted to 480, 240, 120, 60, 30  $\mu\text{g mL}^{-1}$  as described above and used as positive controls. A treatment with only 1 ml of a 1% dimethyl sulfoxide (DMSO) water solution was included as the negative control. Four replicates were set for each treatment. The plates were kept at  $25^\circ\text{C}$  for 48 h. Nematodes were considered dead if their bodies were motionless and straightened after stimulation with 1 M NaOH [5]. The dead and alive juveniles were counted under a stereomicroscope, respectively, and the corrected mortality values of juveniles were calculated as described in Liu et al. [24]. The median lethal concentration ( $\text{LC}_{50}$ ) of  $\alpha\beta$ -DC and other chemicals against nematodes were analysed with SAS software (SAS Institute, Cary, NC). Three trials with four replicates were performed for this experiment.

#### Effect of $\alpha\beta$ -DC on the attractiveness of rice roots to *M. graminicola*

As described in Wang et al. [41], 23 g pluronic F-127 powder was fully dissolved in 100 mL of sterile water at  $4^\circ\text{C}$  while stirring for 24 h. Then, an attraction bioassay was performed at room temperature. Rice roots of 2-week-old plants were drenched with 20 mL  $\alpha\beta$ -DC (30  $\mu\text{g mL}^{-1}$ ) solution or 1% DMSO water solution. One day later, a 1-cm-long root tip was cut and placed into a six-well culture plate containing 1 mL pluronic F-127 gel and approximately 100 hatched J2s. Nematodes attracted to 5 mm around the root tip were counted under a Leica stereomicroscope and were photographed with a DFC400 camera at 6 hpi. The entire experiment was performed thrice, with four replicates.

#### Morphological observation of nematode giant cells

After J2s enter the vascular cylinder, they inject pharyngeal secretions to induce permanent feeding sites known as giant cells, which are used as food resources throughout their life cycle [9]. To observe the morphological changes of nematode giant cells, each rice plant was drenched with 20 ml  $\alpha\beta$ -DC (30  $\mu\text{g mL}^{-1}$ ). Plants drenched with DMSO solution were used as the control. One day later, each plant was inoculated with 100 J2 s. At 7 dpi, 10 root galls from six plants were fixed in  $1 \times$  PIPES buffer overnight and then dehydrated in different ethanol dilutions. After being embedded in Technovit 7100 for 2 weeks, gall tissues were sectioned into 10- $\mu\text{m}$  slices with a Leica RM2265 (Leica Microsystems, Beijing, China). Slices on glass slides were stained with 0.05% toluidine blue and sealed with DPX mountant. Microscopic observations were performed under an Olympus SZX 16 at 40 $\times$  magnification, and images were obtained with an Olympus DP74 (Olympus Optical Company, Tokyo, Japan). The experiment was repeated twice.

#### Development of nematodes in greenhouse experiments

To determine the direct effect of  $\alpha\beta$ -DC on the development of nematodes, each rice roots was drenched with 20 mL  $\alpha\beta$ -DC (240  $\mu\text{g mL}^{-1}$ ), fosthiazate EC (48.6  $\mu\text{g mL}^{-1}$ ), fluopyram SC (4.17  $\mu\text{g mL}^{-1}$ ) or 1% DMSO solution, respectively, at 24 h before nematode inoculation. Each 2-week-old rice plant was inoculated with 200 J2s around the roots and maintained in the greenhouse at  $28 \pm 2^\circ\text{C}$ . At 14 dpi, root samples were collected, and nematodes in rice roots were counted under a stereomicroscope after staining with acid fuchsin for 3 min [26]. The total numbers of nematodes in the third or fourth stage (J3/J4) and females were counted. To calculate the ratio of nematodes at various stages, the numbers of nematodes in different life stages (female or J3/J4) were divided by the total numbers of nematodes in roots using Microsoft Excel 6.0 (Redmond, Washington, USA). The entire experiment was performed thrice, each containing 6 individual plants.

#### Infectivity of nematodes in the field experiment

The field experiment was continuously carried out in a commercial direct-seeding field in Hunan Province, China, from July to September in 2017 and 2018. Rice had been cultivated in this field for at least 40 years and was naturally infested with *M. graminicola* for 10 years [43]. To ensure the nematodes were evenly distributed in the field, the soil was mixed well with a rotary cultivator. To prevent the spread of nematodes, each plot (4 m  $\times$  5 m) was constructed with an earthen levee (height of 25 cm and width of 30 cm) as described in Khanam et al. [17]. In total, four treatments were evaluated in a randomized block design, with 4 replicates, as follows:



(1) 480 mg mL<sup>-1</sup> αβ-DC (15 ml m<sup>-2</sup>), (2) 486 mg mL<sup>-1</sup> fosthiazate EC (2 ml m<sup>-2</sup>), (3) 417 mg mL<sup>-1</sup> fluopyram SC (0.15 ml m<sup>-2</sup>), and (4) untreated control with only 2 L 1% DMSO solution. Each chemical agent was diluted with 2 L DMSO solution and sprayed evenly on the nursery bed before seeding. Approximately 400 g of seeds were directly seeded on each plot after soaking in water at room temperature for 9 h. At 50 d after direct seeding, 20 seedlings from each plot were uprooted and washed free of soil. Root galling was rated on a scale of 0 to 5, where level 0 = no galls, level 1 = 1~2, level 2 = 3~10, level 3 = 11~20, level 4 = 21~30, and level 5 ≥ 30 galls per root system [31]. The gall index was calculated using the formula described in Zhan et al. [43]. The control efficacy was calculated according to the following formula: control efficacy (%) = 100 × (gall index of control - gall index of treatment) / gall index of control.

### Statistical analysis

The mean and standard errors (SE) of the data were subjected to statistical analysis using SAS software version 8.0 (SAS Institute, Cary, NC). Significant differences ( $P \leq 0.05$ ) between the treatments were determined according to Duncan's multiple range test.

### Abbreviations

DMSO: Dimethyl sulfoxide; dpi: Day post inoculation; FLU: Fluopyram; FOS: Fosthiazate; hpi: Hour post inoculation; J2: Second-stage juveniles; LC<sub>50</sub>: Median lethal concentration; PDB: Potato dextrose broth; RKN: Root-knot nematode; SAP: Synthetic absorbent polymer; αβ-DC: αβ-dehydrocurvularin

### Acknowledgements

Not applicable.

### Authors' contributions

WKH and DLP conceived the study and supervised all of the experiments. CX and YL performed most of the experiments. YFH participated in the isolation and identification of nematocidal compounds from fungus. HP, LAK and MYL participated in the nematode inoculation experiment and field experiment. SML and JL helped to draft the manuscript. WKH and CX discussed the results and wrote the manuscript. All authors read and approved the final manuscript.

### Funding

This work was funded by the National Natural Sciences Foundation of China (31571986) and the National Basic Research Program of China (2013CB127502). The funding bodies had no role in the design of the study, collection, analysis, and interpretation of data and in writing the manuscript.

### Availability of data and materials

The datasets used and/or analysed during the current study available from the corresponding author on reasonable request.

### Ethics approval and consent to participate

The authors declare that ethic problems are not applicable.

### Consent for publication

Not applicable.

### Competing interests

The authors declare that they have no competing interests.

### Author details

<sup>1</sup>State Key Laboratory for Biology of Plant Diseases and Insect Pests, Institute of Plant Protection, Chinese Academy of Agricultural Sciences, Beijing 100193, People's Republic of China. <sup>2</sup>Bureau of Water Resource in Xingtang County, Shijiazhuang 050600, People's Republic of China. <sup>3</sup>College of Chemical Engineering, Beijing University of Chemical Technology, Beijing 100029, People's Republic of China. <sup>4</sup>College of Plant Protection, Hunan Agricultural University, Changsha 410128, People's Republic of China.

Received: 2 December 2019 Accepted: 25 February 2020

Published online: 04 March 2020

### References

- Ajwa HA, Trout T, Mueller J, Wilhelm S, Nelson SD, Soppe R, et al. Application of alternative fumigants through drip irrigation systems. *Phytopathology*. 2002;92:1349–55.
- Anwer M. A characterization of some isolates of *Aspergillus niger* and evaluation of their effects against *Meloidogyne incognita*. *Ann Appl Biol*. 2006;27:33–4.
- Beketov MA, Liess M. Acute and delayed effects of the neonicotinoid insecticide thiacloprid on seven freshwater arthropods. *Environ Toxicol Chem*. 2008;27:461–70.
- Caputo O, Viola F. Isolation of a beta-dehydrocurvularin from *Aspergillus aureofulgens*. *Planta Med*. 1977;31:31–2.
- Chen SY, Dickson DW. A technique for determining live second-stage juveniles of *Heterodera glycines*. *J Nematol*. 2000;32:117–21.
- Cheng L, Xu S, Xu C, Lu H, Zhang Z, Zhang D, et al. Effects of trans-2-hexenal on reproduction, growth and behaviour and efficacy against the pinewood nematode, *Bursaphelenchus xylophilus*. *Pest Manag Sci*. 2017;73:888–95.
- Diez JA, Dusenbery DB. Repellent of root-knot nematodes from exudate of host roots. *J Chem Ecol*. 1989;15:2445–55.
- Dutta T, Ganguly A, Gaur HS. Global status of rice root-knot nematode, *Meloidogyne graminicola*. *Afr J Microbiol Res*. 2012;6:6016–21.
- Gheysen G, Mitchum MG. Molecular insights in the susceptible plant response to nematode infection. In: Berg RH, Taylor CG, editors. *Cell Biology of Plant Nematode Parasitism*. Berlin Heidelberg: Springer; 2009. p. 45–81.
- Hu Y, Zhang W, Zhang P, Ruan W, Zhu X. Nematicidal activity of chaetoglobosin A produced by *Chaetomium globosum* NK102 against *Meloidogyne incognita*. *J Agric Food Chem*. 2013;61:41–6.
- Jang JY, Choi YH, Shin TS, Kim TH, Shin KS, Park HW, et al. Biological control of *Meloidogyne incognita* by *Aspergillus niger* F22 producing oxalic acid. *PLoS One*. 2016;11:e0156230.
- Ji H, Gheysen G, Denil S, Lindsey K, Topping JF, Nahar K, et al. Transcriptional analysis through RNA sequencing of giant cells induced by *Meloidogyne graminicola* in rice roots. *J Exp Bot*. 2013;64:3885–98.
- Jin N, Liu SM, Peng H, Huang WK, Kong LA, Wu YH, et al. Isolation and characterization of *Aspergillus niger* NBC001 underlying suppression against *Heterodera glycines*. *Sci Rep*. 2019;9:591.
- Kearn J, Ludlow E, Dillon J, O'Connor V, Holden-Dye L. Fluensulfone is a nematicide with a mode of action distinct from anticholinesterases and macrocyclic lactones. *Pestic Biochem Physiol*. 2014;109:44–57.
- Khan MR, Zaidi B, Haque Z. Nematicides control rice root-knot, caused by *Meloidogyne graminicola*. *Phytopathol Mediterr*. 2012;51:298–306.
- Khan Z, Kim SG, Jeon YH, Khan HU, Son SH, Kim YH. A plant growth promoting rhizobacterium, *Paenibacillus polymyxa* strain GBR-1, suppresses root-knot nematode. *Bioresour Technol*. 2008;99:3016–23.
- Khanam S, Akanda AM, Ali MA, Kyndt T, Gheysen G. Identification of Bangladeshi rice varieties resistant to ufra disease caused by the nematode *Ditylenchus angustus*. *Crop Prot*. 2016;79:162–9.
- Kusano M, Nakagami K, Fujioka S, Kawano T, Shimada A, Kimura Y. β-dehydrocurvularin and related compounds as nematicides of *Pratylenchus penetrans* from the fungus *Aspergillus* sp. *Biosci Biotechnol Biochem*. 2003;67:1413–6.
- Kyndt T, Fernandez D, Gheysen G. Plant-parasitic nematode infections in rice: molecular and cellular insights. *Annu Rev Phytopathol*. 2014;52:135–53.
- Kyndt T, Vieira P, Gheysen G, De Almeida-Engler J. Nematode feeding sites: unique organs in plant roots. *Planta*. 2013;238:807–18.
- Le HTT, Padgham JL, Sikora RA. Biological control of the rice root-knot nematode *Meloidogyne graminicola* on rice, using endophytic and rhizosphere fungi. *Int J Pest Manag*. 2009;55:31–6.

22. Le HTT, Padgham JL, Hagemann MH, Sikora RA, Schouten A. Developmental and behavioural effects of the endophytic *Fusarium moniliforme* Fe14 towards *Meloidogyne graminicola* in rice. *Ann Appl Biol*. 2016;169:134–43.
23. Li S, Duan YX, Zhua XF, Chen LJ, Wang YY, Pan LL. Effects of adding secondary metabolites of *Aspergillus niger* on resistance to tomato root-knot nematode. *China Veg*. 2011;4:44–9.
24. Liu Y, Ding Z, Peng DL, Liu SM, Kong LA, Peng H, et al. Evaluation of the biocontrol potential of *Aspergillus welwitschiae* against the root-knot nematode *Meloidogyne graminicola* in rice (*Oryza sativa* L.). *J Integr Agric*. 2019;18:1–10.
25. Menjivar RD, Hagemann MH, Kranz J, Cabrera JA, Dababat AA, Sikora RA. Biological control of *Meloidogyne incognita* on cucurbitaceous crops by the non-pathogenic endophytic fungus *Fusarium oxysporum* strain 162. *Int J Pest Manag*. 2011;57:249–53.
26. Nahar K, Kyndt T, De Vleeschauwer D, Hofte M, Gheysen G. The jasmonate pathway is a key player in systemically induced defense against root knot nematodes in rice. *Plant Physiol*. 2011;157:305–16.
27. Nusbaum CJ, Barker KR. A rapid flotation-sieving technique for extracting nematodes from soil. *Plant Dis Rep*. 1966;50:954–7.
28. Oostendorp M, Sikora R. In vitro interrelationships between rhizosphere bacteria and *Heterodera schachtii*. *Rev Nematol*. 1990;13:269–74.
29. Padgham JL, Duxbury JM, Mazid AM, Abawi GS, Hossain M. Yield loss caused by *Meloidogyne graminicola* on lowland rainfed rice in Bangladesh. *J Nematol*. 2004;36:42–8.
30. Padilla PA, Ladage ML. Suspended animation, diapause and quiescence: arresting the cell cycle in *C. elegans*. *Cell Cycle*. 2012;11(9):1672–9.
31. Pederson GA, Windham GL. Resistance to *Meloidogyne incognita* in trifolium interspecific hybrids and species related to white clover. *Plant Dis*. 1989;73:567–9.
32. Prasad JS, Somasekhar N, Varaprasad KS. Nematode infestation in paddy, in nematode infestations. In: Khan MR, Jairajpuri MS, editors. *Food crop*. India: NASI; 2010. p. 17–71.
33. Prasad SK, Rao YS. Drench pesticide treatment to control the root knot nematode *Meloidogyne graminicola*. *Int Rice Res Notes*. 1977;2:20.
34. Robeson D, Strobel G.  $\alpha$ - $\beta$ -dehydrocurvularin and curvularin from *Alternaria cinerariae*. *Z Naturforsch*. 1981;36:1081–3.
35. Ruanpanun P, Laatsch H, Tangchitsomkid N, Lumyong S. Nematicidal activity of fervenulin isolated from a nematicidal actinomycete, *Streptomyces* sp. CMU-MH021, on *Meloidogyne incognita*. *World J Microbiol Biotechnol*. 2011;27:1373–80.
36. Saikia SK, Tiwari S, Pandey R. Rhizospheric biological weapons for growth enhancement and *Meloidogyne incognita* management in *Withania somnifera* cv. Poshita *Biol Control*. 2013;65:225–34.
37. Siddiqui IA, Shaikat SS, Khan A. Differential impact of some *Aspergillus* species on *Meloidogyne javanica* biocontrol by *Pseudomonas fluorescens* strain CHA0. *Lett Appl Microbiol*. 2004;39:74–83.
38. Soriano IR, Reversat G. Management of *Meloidogyne graminicola* and yield of upland rice in South-Luzon, Philippines. *Nematology*. 2003;5:879–84.
39. Tsai WT. Environmental and health risks of sulfuric fluoride, a fumigant replacement for methyl bromide. *J Environ Sci Health C Environ Carcinog Ecotoxicol Rev*. 2010;28:125–45.
40. Vu T, Hauschild R, Sikora R. *Fusarium oxysporum* endophytes induced systemic resistance against *Radopholus similis* on banana. *Nematology*. 2006;8:847–52.
41. Wang C, Lower S, Williamson V. Application of pluronic gel to the study of root-knot behaviour. *Nematology*. 2009;11:453–64.
42. Wang C, Ulloa M, Mullens TR, Yu JZ, Roberts PA. QTL analysis for transgressive resistance to root-knot nematode in interspecific cotton (*Gossypium* spp.) progeny derived from susceptible parents. *PLoS One*. 2012;7:e34874.
43. Zhan LP, Peng DL, Wang XL, Kong LA, Peng H, Liu SM, et al. Priming effect of root-applied silicon on the enhancement of induced resistance to the root-knot nematode *Meloidogyne graminicola* in rice. *BMC Plant Biol*. 2018;18:50.

## Publisher's Note

Springer Nature remains neutral with regard to jurisdictional claims in published maps and institutional affiliations.

**Ready to submit your research? Choose BMC and benefit from:**

- fast, convenient online submission
- thorough peer review by experienced researchers in your field
- rapid publication on acceptance
- support for research data, including large and complex data types
- gold Open Access which fosters wider collaboration and increased citations
- maximum visibility for your research: over 100M website views per year

**At BMC, research is always in progress.**

Learn more [biomedcentral.com/submissions](https://biomedcentral.com/submissions)

