

RESEARCH

Open Access



Whole-genome sequencing reveals genomic diversity and selection signatures in Xia'an cattle

Xingya Song^{1†}, Zhi Yao^{1†}, Zijiang Zhang^{2†}, Shijie Lyu^{2†}, Ningbo Chen¹, Xingshan Qi³, Xian Liu⁴, Weidong Ma⁵, Wusheng Wang⁵, Chuzhao Lei¹, Yu Jiang¹, Eryao Wang^{2*} and Yongzhen Huang^{1*}

Abstract

Background The crossbreeding of specialized beef cattle breeds with Chinese indigenous cattle is a common method of genetic improvement. Xia'an cattle, a crossbreed of Charolais and Nanyang cattle, is China's first specialized beef cattle breed with independent intellectual property rights. After more than two decades of selective breeding, Xia'an cattle exhibit a robust physique, good environmental adaptability, good tolerance to coarse feed, and high meat production rates. This study analyzed the population genetic structure, genetic diversity, and genomic variations of Xia'an cattle using whole-genome sequencing data from 30 Xia'an cattle and 178 published cattle genomic data.

Result The ancestry estimating composition analysis showed that the ancestry proportions for Xia'an cattle were mainly Charolais with a small amount of Nanyang cattle. Through the genetic diversity studies (nucleotide diversity and linkage disequilibrium decay), we found that the genomic diversity of Xia'an cattle is higher than that of specialized beef cattle breeds in Europe but lower than that of Chinese native cattle. Then, we used four methods to detect genome candidate regions influencing the excellent traits of Xia'an cattle. Among the detected results, 42 genes ($\theta\pi$ and CLR) and 131 genes (F_{ST} and XP-EHH) were detected by two different detection strategies. In addition, we found a region in BTA8 with strong selection signals. Finally, we conducted functional annotation on the detected genes and found that these genes may influence body development (*NR6A1*), meat quality traits (*MCCC1*), growth traits (*WSCD1*, *TMEM68*, *MFN1*, *NCKAP5*), and immunity (*IL11RA*, *CNTFR*, *CCL27*, *SLAMF1*, *SLAMF7*, *NAA35*, and *GOLM1*).

Conclusion We elucidated the genomic features and population structure of Xia'an cattle and detected some selection signals in genomic regions potentially associated with crucial economic traits in Xia'an cattle. This research provided a basis for further breeding improvements in Xia'an cattle and served as a reference for genetic enhancements in other crossbreed cattle.

Keywords Xia'an cattle, Genetic diversity, Population structure, Genetic signatures

[†]First Author: Xingya Song, Zhi Yao, Zijiang Zhang and Shijie Lyu.

*Correspondence:
Eryao Wang
eryaowang@outlook.com
Yongzhen Huang
hyzsci@nwafu.edu.cn

Full list of author information is available at the end of the article



Introduction

Domestic cattle include *Bos taurus*, *Bos indicus*, and their crossbreeds [1]. Previous research has divided domestic cattle around the world into five core populations based on geographic location: European taurine, Eurasian taurine, East Asian taurine, Chinese indicine, and Indian indicine [2, 47]. Chinese native cattle, due to the development of agricultural civilization, have historically been bred for plowing, and it resulted in Chinese native cattle exhibiting better environmental adaptability and tolerance to coarse feed compared to specialized beef cattle breeds [3, 4]. However, these local breeds notably lag behind specialized beef cattle in terms of meat production performance. In the 1980s, the demand for draft cattle gradually declined with the rapid advancement of agricultural mechanization. Concurrently, the market demand for beef cattle increased fast, necessitating improving both meat quantity and quality. To tap into the production potential of Chinese native cattle, breeders often introduced foreign bloodlines through hybridization to develop new breeds suitable for China. The Charolais, originating from France, are renowned as a large-sized beef cattle breed known for their rapid growth and high meat yield. Nanyang cattle, one of China's five major native cattle breeds, are mainly distributed in Nanyang City, Henan Province. Previous study has shown that it belonged to the crossbreed of *Bos taurus* and *Bos indicus*. It has the advantages of the tall physique, fine meat quality, and more intramuscular fat, but also has the disadvantages of the slow growth rate and low slaughter rate [5, 48, 49]. Then, breeders in Henan province introduced Charolais cattle to crossbreed with the Nanyang cattle. After over two decades of selective breeding, they cultivated China's first beef cattle breed with independent intellectual property rights. Xia'an cattle possess several advantages, such as early maturity, rapid growth, good meat quality, and low dystocia rates, enhancing both beef production efficiency and the profitability of cattle farming for farmers.

In order to deeply study the genetic origin of excellent traits during Xia'an cattle breeding, we sequenced 30 Xia'an cattle's genome and detected single nucleotide polymorphisms (SNPs) based on the reference genome of *Bos taurus* (ARS-UCD1.2). SNPs from Xia'an cattle were compared with sites from beef cattle and Chinese native cattle previously collected.

Result

Sequencing mapping and SNP detection

This study generated 6,574,344,629 clean reads from 30 Xia'an cattle whole-genome sequencing data. The reads were mapped to the reference genome (ARS-UCD1.2) and the average coverage of these samples is 11.64×. Then, 20,546,726 biallelic SNPs discovered in these 30

Xia'an cattle were annotated. Functional annotation of SNP sites showed that the majority of SNPs were located in intergenic regions (58.8%) or intronic regions (37.5%). Exonic SNPs comprised 0.7% of the total SNPs, including 54,180 non-synonymous SNPs and 74,085 synonymous SNPs (Table S3). The total number of detected SNPs in the breeds is shown in Table S3. The count of SNPs in Xia'an cattle is significantly lower than in Chinese indicine, Indian indicine, and Chinese native cattle (Nanyang cattle, Qinchuan cattle, and Jiaxian Red cattle) yet higher than in European taurine and Eurasian taurine. This distribution pattern of SNPs is similar to Pi'an cattle, which is also a hybrid breed of Nanyang cattle in a previous study [6].

Population structure analysis and genetic diversity analysis

In order to delve deeper into the genetic background of Xia'an cattle, this study conducted ancestry estimating analysis and Principal Component Analysis (PCA) and built the Neighbor-Joining (NJ) tree. The results from NJ tree and PCA exhibit similar patterns, revealing distinct geographical clustering among cattle populations. The first Principal Component (PC) explained 13.13% of the whole genome variation and the second PC explained 4.26%. In the NJ tree, these cattle are clearly divided into different clusters according to five "core" populations [2]. Xia'an cattle was positioned between Chinese native cattle and Eurasian taurine, closer to the Eurasian taurine (Fig. 1B and C). The result without Indian indicine is also shown in this study (Fig. S1), and it's similar to Fig. 1B. In the ancestry estimating analysis, we showed the cases which the CV error (Table S4) is small, and the rest were shown in Fig. S2. When K=2, There are clearly two components to the pedigree of these cattle: *Bos taurus* and *Bos indicus*. When K=3, When K=3, the Xia'an cattle exhibited a higher resemblance to Charolais than Nanyang cattle, and it has more European taurine ancestry (Fig. 1D). because these cattle were divided into six reference groups and one target group, we also plotted the case at K=4–7 (Fig. S1).

To assess the genetic diversity of Xia'an cattle, we calculated nucleotide diversity and linkage disequilibrium (LD) in Xia'an cattle and other breeds. The results revealed that the highest nucleotide diversity was observed in Chinese indicine. Xia'an cattle exhibited slightly higher nucleotide diversity compared to its paternal Charolais but lower than its maternal Nanyang cattle (Fig. 2A). Linkage disequilibrium analysis at the distance of 100 kb indicated that Jiaxian Red cattle and Qinchuan cattle had the lowest LD values, while Tibetan cattle exhibited the highest LD value, followed by Mongolian cattle. Xia'an cattle showed higher LD levels than Charolais but lower than Nanyang cattle (Fig. 2B). In addition, we tested runs of homozygous (ROH) in these

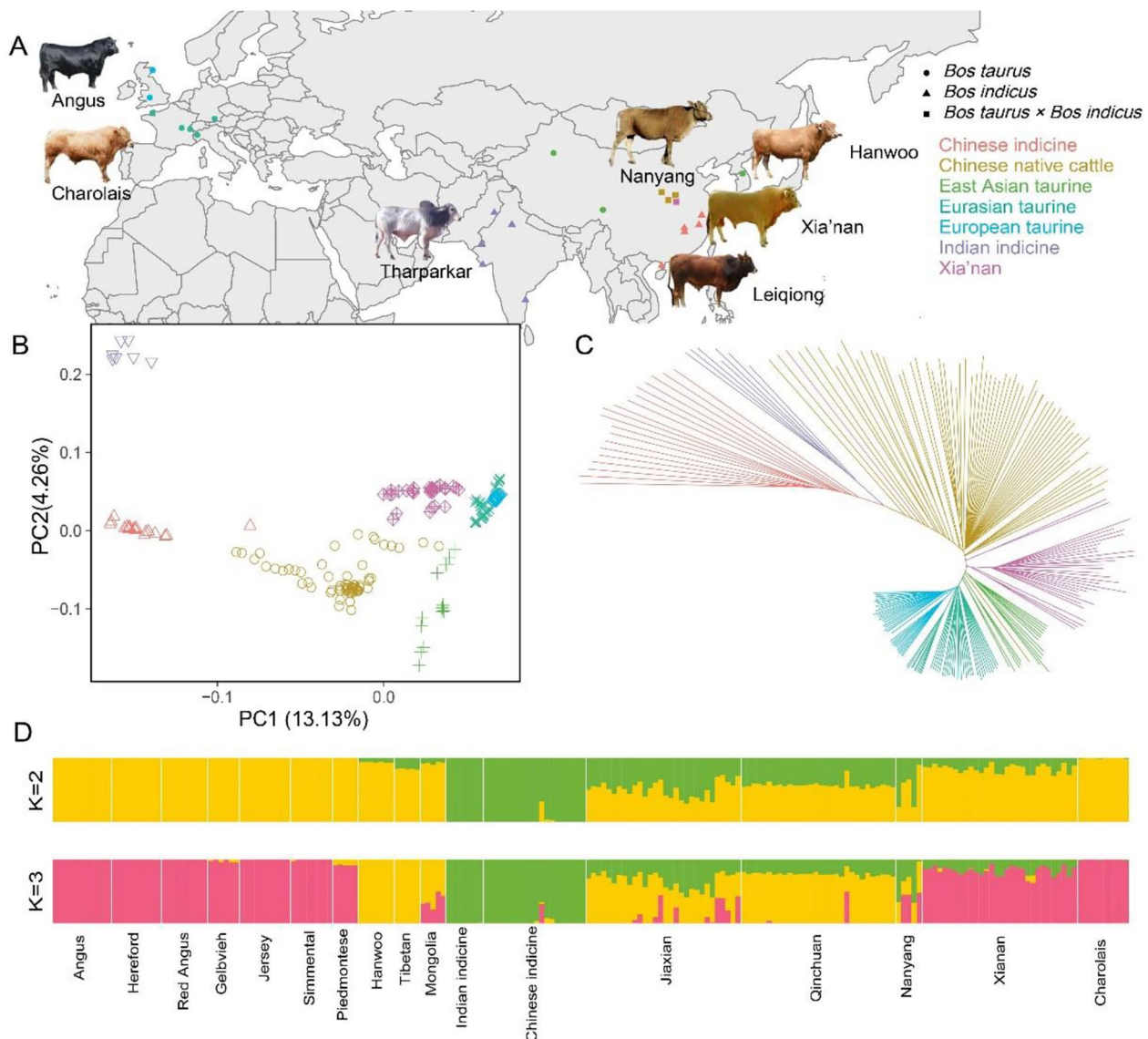


Fig. 1 **A** Geographical distribution map of cattle breeds used in this study. **B** Principal component analysis of 17 cattle populations (208 individuals). **C** Neighbor-joining tree of the relationships in these populations. **D** Ancestry component analysis of these cattle breeds using ADMIXTURE with K=2 and K=3

breeds and counted the distribution of ROHs of different lengths in different populations. We used the average of the number of ROHs in each breed to characterize the distribution pattern (Fig. S3). The results showed Chinese native cattle and Chinese indicine had more short ROHs (0.5-1 Mb and 1–2 Mb). Xia’nan cattle exhibited a pattern similar to that of the European taurine (Angus, Hereford and Red Angus).

Genome-wide selective sweep test

We employed nucleotide diversity ($\theta\pi$) analysis and composite likelihood ratio (CLR) methods to detect and select genomic regions associated with genetic diversity. Regions that showed high signals (top 1%) by both

methods were considered candidate selection regions (Fig. 3A and B). In Xia’nan cattle, a total of 1184 genes ($\theta\pi$) and 484 genes (CLR) exhibiting selection features were identified, with 40 genes overlapping (Tables S5 and S6). Functional enrichment analysis using Kyoto Encyclopedia of Genes and Genomes (KEGG) pathways and Gene Ontology (GO) was conducted for these overlapping genes. The top term enriched by KEGG is “Cytokine-cytokine receptor interaction” (P -value=0.006), Involving 3 genes (*IL11RA*, *CNTFR*, *CCL27*). The GO terms with a significant (P -value<0.05) association in these overlapped genes include cytokine binding (GO:0019955), regulation of transcription, DNA-templated (GO:0006355), receptor complex (GO:0043235),

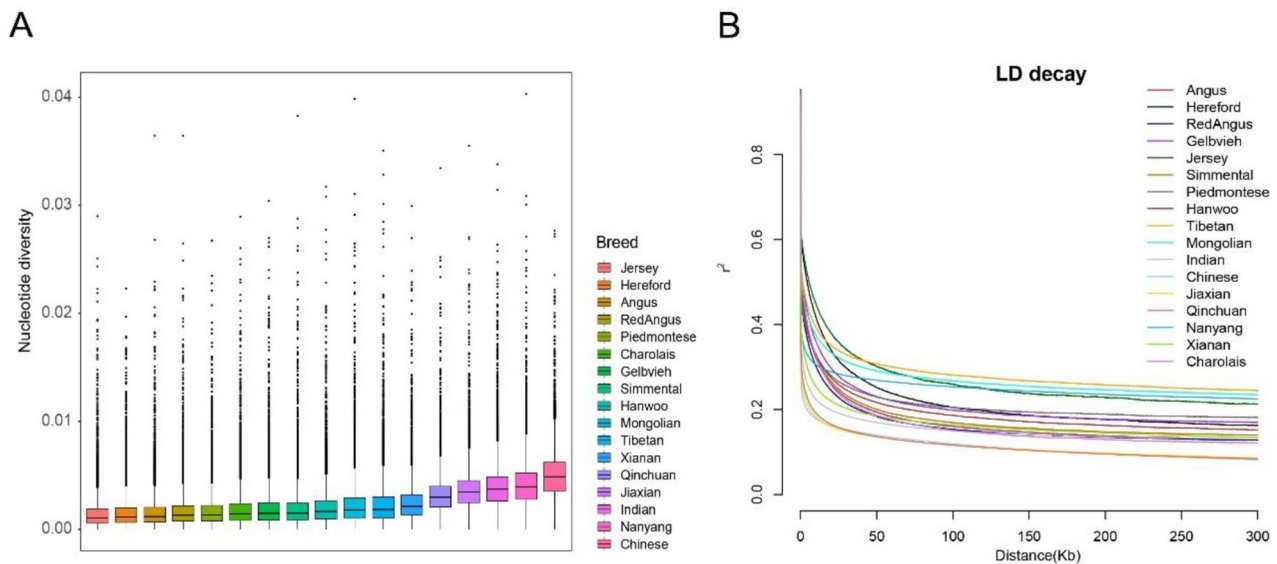


Fig. 2 Genetic diversity analysis of these cattle. **A** Genome-wide distribution of nucleotide diversity of each breed in 50 kb windows with 50 kb steps. The horizontal line inside the box indicates the median of this distribution; box limits indicate the first and the thirds quartiles, points shows outliers. Data points outside the whiskers can be considered as outliers. **B** Genome-wide average LD decay estimated from each breed

and cytokine receptor activity (GO:0004896). Most terms are closely associated with the immune (Table S7 and S8).

Subsequently, we conducted fixation index (F_{ST}) and cross-population extended homozygosity (XP-EHH) tests between the Xia'an cattle and Nanyang cattle, and the top 1% of all sites are positive sites (Fig. 3C and D). The F_{ST} method detected 1344 genes, while the XP-EHH test identified 1355 genes (Tables S9 and S10). Among these, 131 genes were detected by both methods and confirmed as potential candidate genes specific to Xia'an cattle. The KEGG and GO analysis results of these genes are shown in Table S12. Additionally, some regions with strong signals of selection contained known genes associated with traits of interest, such as growth (*WSCD1*, *TMEM68*, *MFN1*, *NCKAP5*), environmental adaptation (*ITPR2*, *GBA3*), fat metabolism (*CRTC1*, *HSPA12A*), and meat quality (*MCCCI*).

In addition, we observed a significant peak on BTA8: 79.1–79.4 Mb, which was found by three methods (CLR, $\theta\pi$, and F_{ST}) (Fig. 4A and B). This region includes two immune-related genes: *NAA35* and *GOLM1*.

Discussion

Population genetics and genetic diversity analyses can aid in assessing genetic resources and breed improvement in Xia'an cattle. The results of ADMIXTURE software analysis show that the ancestry composition of Xia'an cattle is more similar to that of Charolais cattle, with most European taurine ancestry. This tiny genetic contribution from Nanyang cattle results higher nucleotide diversity of the Xia'an cattle genome than European taurine's. However, the genomic diversity of Xia'an cattle is

lower than that of Chinese native cattle. It may be due to the founder effect or the recent intensive artificial selection in this population of Xia'an cattle. The LD pattern of each variety was basically consistent with the results of nucleotide diversity. The higher LD level in Xia'an cattle than in Charolais indicated that there may be more breeding in Xia'an cattle. The differing LD imbalance intensity in Nanyang cattle compared to other Chinese local breeds might stem from a smaller sample size. The collected samples have undergone stronger artificial selection, emphasizing the rich variation sites and genetic resources inherent in Chinese native cattle breeds. The distribution pattern of ROHs can illustrate the breeding history of the cattle. The ROH distribution pattern of Xia'an cattle is similar to that of European taurine, reflecting the recent intensive artificial selection in this breed. The pattern of Nanyang cattle and other Chinese native cattle breeds showed large differences, probably because the sample count of Nanyang cattle was too less.

Chinese native cattle are often better resistant and more adaptable than foreign beef breeds. In our selective sweep analysis of Xia'an cattle, we found several genes associated with immune function, including *IL11RA*, *CNTFR*, and *CCL27*, within the "cytokine-cytokine receptor interaction" pathway. Interleukin-11 receptor alpha (IL11RA) is the receptor of IL-11. In mice, the specific expression of *IL-11* transgenes in fibroblasts or the injection of IL-11 leads to heart and kidney fibrosis, ultimately resulting in organ failure. Conversely, the deletion of *IL11RA1* offered protection against these diseases [7]. Recent research has shown that inhibition of *CNTFR* could diminish the inhibitory effects of *CLCF1*

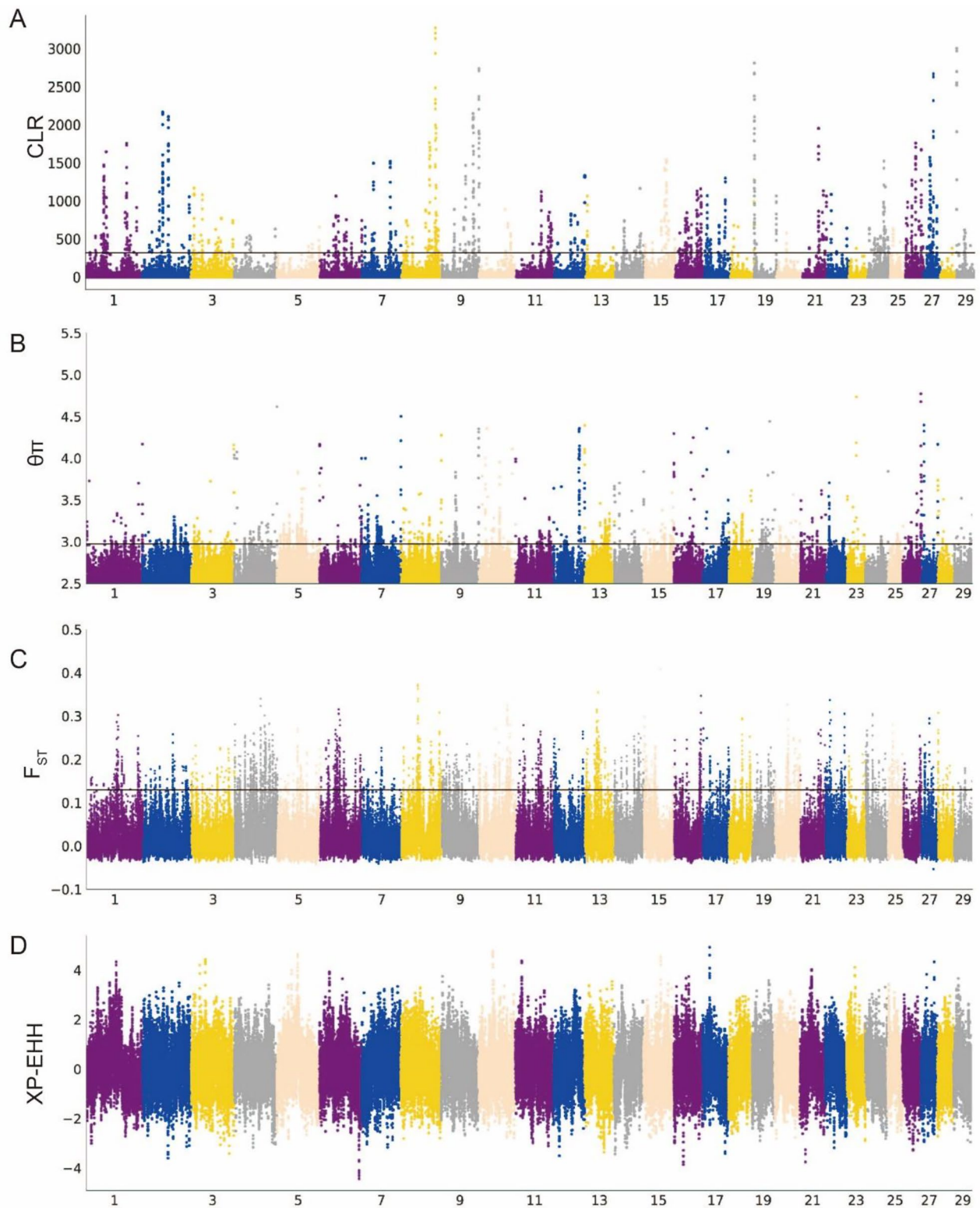


Fig. 3 Manhattan plots of Analysis of the signatures of positive selection in the genome of Xia'nan cattle

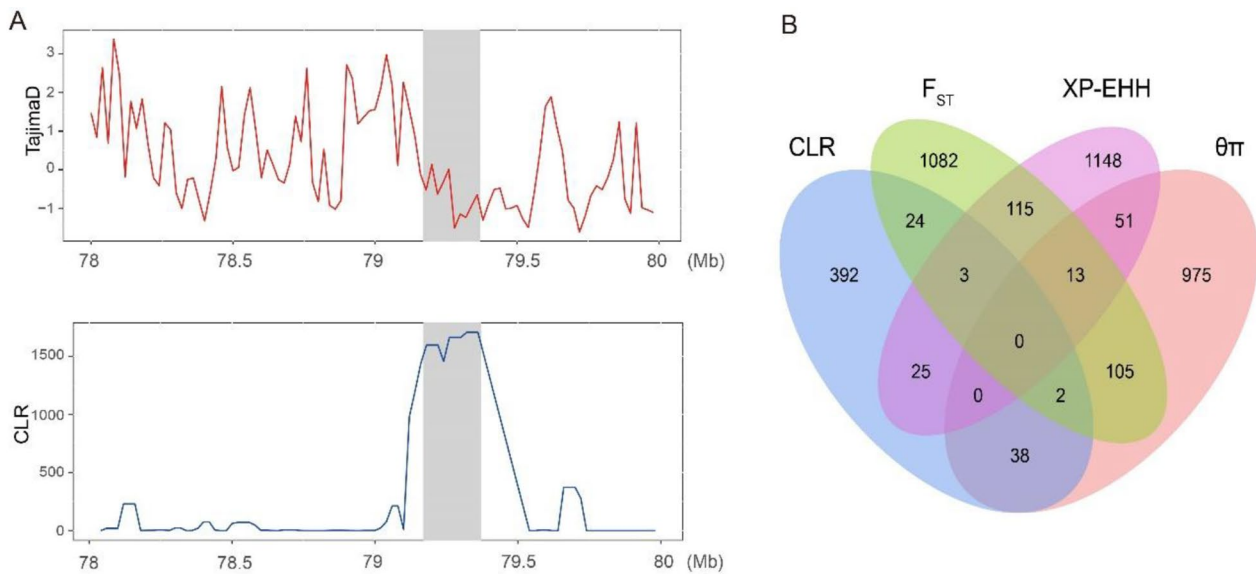


Fig. 4 **A** Tajima's D and CLR values on BTA8: 79.1–79.4 Mb region. **B** Venn diagram showing the overlapping gene counts among $\theta\pi$, CLR, F_{ST} and XP-EHH.

on mitochondrial biogenesis and thermogenesis [8]. The CC chemokine receptor 27 (CCL27), predominantly expressed by skin keratinocytes, plays a crucial role in the establishment of resident lymphocytes and maintaining immune balance in barrier tissues. It's closely linked to normal skin and hair follicle development [9].

The candidate genes *SLAMF1* and *SLAMF7* are also related to immunity in cattle in previous research [10]. *SLAMF1* and *SLAMF7* both belong to the signaling lymphocytic activation molecule (SLAM) family, typically regarded as potential targets for inflammation and autoimmune diseases [11, 12]. Previous studies have identified the *SLAMF1* as a crucial negative regulator in humoral immune responses [13], initiating signal transduction networks across various immune cells [14]. Meanwhile, the *SLAMF7* plays a significant role in macrophage hyperactivation and may have critical implications in modulating T-cell functionality within the tumor microenvironment [15]. Additionally, *SLAMF7* is involved in regulating B-cell responses and adaptive immunity [16], potentially modulating susceptibility to autoimmune conditions in the central nervous system [17]. The strong selection region (BTA8: 79.1–79.4 Mb) that we found by three methods contains two genes: N-Alpha-Acetyltransferase 35 (*NAA35*) and Golgi membrane protein 1 (*GOLM1*). A previous study has shown that the cytokine quantitative trait locus (QTL), including the *NAA35 - GOLM1*, significantly regulates the production of interleukin-6 in response to various pathogens [18].

These findings may be linked to the high disease resistance observed in Nanyang cattle and potentially contribute to Xia'nán cattle's superior disease resistance compared to Charolais cattle [19]. Additionally, among

the positively selected genes, we discovered *NR6A1*, a gene associated with mammalian trunk development and vertebral count [20, 21]. It may serve as a candidate locus influencing the body size of Xia'nán cattle.

We discovered lots of genes when comparing selection signals between Xia'nán and Charolais cattle. By searching the literature, we found that some of these genes influence important traits, for example, growth traits (*WSCD1*, *TEME68*, *MFN1*, *NCKAP5*), fat deposition (*CRTC1*, *HSPA12A*), environmental adaptation (*ITPR2*, *GBA3*), and meat quality (*MCCCI*). The WSC Domain Containing 1 (*WSCD1*) gene encodes a protein exhibiting sulfotransferase activity and playing a role in glucose metabolism. This gene has been identified to be associated with daily feeding time and feeding rate in the White Duroc \times Erhualian F population in a GWAS study [22], and it was linked to three reproductive periods' body size in Simmental beef cattle in another GWAS study [8]. Transmembrane protein 68 (*TEME68*) was found that it may be associated with feed intake and growth phenotypes in cattle [23]. Mitochondrial fusion protein 1 (*MFN1*) is a key regulator of mitochondrial fusion in mammalian cells, playing a pivotal role in maintaining the stability of mitochondrial morphology. The copy number of this gene was found to be related to the growth traits of beef cattle [24]. NCK-associated protein 5 (*NCKAP5*) was found to be potentially associated with important phenotypes in Limousin cattle [25]. CREB-regulated transcription coactivator 1 (*CRTC1*) and Heat shock protein 12 A (*HSPA12A*) can respectively regulate adipocyte differentiation and fat metabolism through the PPAR γ pathway [26, 27]. Inositol 1,4,5-Trisphosphate receptor type 2 (*ITPR2*) and Glucosylceramidase Beta 3 (*GBA3*) were reported as high-altitude adaptation genes

[28–30]. Methylcrotonyl-CoA carboxylase 1 (*MCCC1*) was identified as a candidate gene for pork meat quality through weighted gene co-expression network analysis [31].

These genes, which have been found to be related to immunity, fat deposition, meat quality, and adaptability, may be the components of the genetic basis of Nanyang cattle for good adaptability, excellent disease resistance, and tender meat quality. These screened genes may all play important roles in the formation of Xia'an cattle's excellent traits and can be used as candidate genes for breeding of beef cattle.

Conclusions

This study offers a thorough insight into genomic variations of Xia'an cattle through Whole Genome Sequencing (WGS) data analysis. The exploration of population structure and genetic diversity in Xia'an cattle will provide valuable guidance for developing informed and effective breeding strategies. Furthermore, we identified some candidate genes that may play crucial roles in growth traits, immune responses, and meat quality in beef cattle. Xia'an cattle stand as a successful example of improvement among Chinese native cattle breeds, and unraveling the genetic factors behind their superior traits is pivotal for further enhancements within this breed and the development of novel breeds.

Methods

Sample and sequencing

We collected 30 blood samples of Xia'an cattle from the Xia'an breeding farm in Henan province (Table S1). The cattle were not treated harshly during sampling and were released after sampling. We employed the standard phenol-chloroform method for blood DNA extraction [32].

After assessing the DNA quality, gene libraries were assembled, each with an average fragment size of 300 bp per sample. The sequencing was carried out by BGI using the DNBSEQ-T7 sequencer.

To better elucidate the genetic variations in Xia'an cattle, we expanded our sample collection by acquiring an additional 178 samples from five "core" cattle populations [2]. These samples encompass European taurine (Angus ($n=11$), Hereford ($n=10$), Red Angus ($n=9$)), Eurasian taurine (Chariolais ($n=10$), Gelbvieh ($n=6$), Jersey ($n=10$), Piedmontese ($n=5$), and Simmental ($n=8$)), East Asian taurine (Hanwoo ($n=7$), Mongolia ($n=5$), Tibetan ($n=5$)), Chinese indicine (Guangfeng cattle ($n=4$), Leiqiong cattle ($n=3$), Ji'an cattle ($n=4$), Jinjiang cattle ($n=4$), Wannan cattle ($n=5$)), Indian indicine (Gir ($n=2$), Haryana ($n=1$), Nelore ($n=1$), Sahiwal ($n=1$), Tharparkar ($n=1$), unidentified breed ($n=1$)) and Chinese native cattle ((Nanyang ($n=5$), Jiashian ($n=30$), Qinchuan ($n=30$)) (Table S2).

Reads mapping, SNP calling, and annotation

The Trimmomatic software (version 0.38) [33] was utilized for trimming sequence reads, employing the following parameters: "LEADING:20, TRAILING:20, SLIDINGWINDOW: 3:15, AVGQUAL:20, MINLEN:35, PHRED33". The clean reads were aligned to the reference genome ARS-UCD1.2 by "bwa mem" software (version 0.7.13-r1126) with default parameters. Picard software (<http://broadinstitute.github.io/picard>) was used to remove PCR duplicates. After these, we used the "HaplotypeCaller", "GenotypeGVCFs", and "SelectVariants" modules in the Genome Analysis Toolkit (GATK, version 4.1.8.1) to detect SNPs and used the "VariantFiltration" module to filter SNPs with the parameters (QD<2.0, QUAL<30.0, SOR>3.0, FS>60.0, MQ<40.0, MQRankSum < -12.5, and ReadPosRankSum < -8.0) [34]. Finally, BCFtools [35] was used to retain SNP sites with a genotype missing rate less than 0.1 and a minimum minor allele count greater than 2 (F_MISSING<0.1 & MAC>2). We employed ANNOVAR [30] software to annotate the functions of each SNP based on the *Bos taurus* reference genome annotation file (https://ftp.ncbi.nlm.nih.gov/genomes/all/GCF/002/263/795/GCF_002263795.1_ARS-UCD1.2/GCF_002263795.1_ARS-UCD1.2_genomic.gff).

Population genetic analysis

We used PLINK (version 1.90) [36] to remove the SNPs with high LD. The parameter is "--indep-pair-wise 50 5 0.2". PopLDdecay [37] software was used to calculate and visualize Linkage disequilibrium (LD) decay with physical distance between SNPs. PCA was conducted using the "SmartPCA" module within Eigensoft (v6.1.4) [38]. For ancestry estimation analysis, ADMIXTURE (version 1.3) [39] was employed with the kinship (K-value) ranging from 2 to 7, and TBtools [40] was used for visualization. We utilized the matrix of pairwise genetic distances supplied by PLINK was used to construct an unrooted evolutionary tree. The visualization of the evolutionary tree was carried out using MEGA11 [41] and FigTree v1.4.4 (<http://tree.bio.ed.ac.uk/software/figtree/>). We detected ROHs by PLINK with the following parameters: (1) the size of the window of 50 SNPs (--homozyg-window-snp 50); (2) required minimum density (--homozyg-density 50); (3) number of heterozygotes allowed in a window (--homozyg-window-het 3); (4) the number of missing calls allowed in window (--homozyg-window-missing 5). ROHs were divided into four categories based on length: 0.5-1 Mb, 1-2 Mb, 2-4 Mb, > 4 Mb.

Selective sweep identification

In order to reveal the signatures of selection influenced by artificial selection and genetic adaptation to the local environment, we employed various strategies to detect

the genome selection signals of Xia'nán cattle. Within the Xia'nán cattle population, the composite likelihood ratio (CLR) method [42] and the nucleotide diversity ($\theta\pi$) were employed. The value for nucleotide diversity in the plot is $-\log_{10}(\theta\pi)$. We used VCFtools [43] software to estimate the whole-genome nucleotide diversity using the sliding window approach utilizing window sizes of 50 kb and steps of 20 kb. SweepFinder2 [44] was employed to calculate the CLR for every 50 kb window. Empirical P -values of these windows were calculated. The regions with the empirical P -value in the top 1% are positive regions, and the genes detected by both methods are regarded as candidate genes.

Furthermore, fixation index (F_{ST}) and cross-population extended haplotype homozygosity (XP-EHH) analyses were conducted to compare Xia'nán cattle with Nanyang cattle. F_{ST} analysis was carried out by VCFtools with the same window size as CLR analysis. In the XP-EHH selection scans, the statistics were derived from the average of standardized XP-EHH scores calculated for every 50 kb region by SELSCAN V1.1 [45] software. The directional XP-EHH score indicated selection: a positive score suggested potential selection in Xia'nán cattle, while a negative score implied potential selection in the reference population. A significance threshold of P -value < 0.01 was applied to identify noteworthy genomic regions. Genes identified through both methods were considered as candidates for positive selection.

To further understand the functions and signaling pathways associated with these candidate genes, we used KOBAS (version 3.0) [46] to get enrichment pathways by GO and KEGG.

Supplementary Information

The online version contains supplementary material available at <https://doi.org/10.1186/s12864-024-10463-3>.

Supplementary Material 1
Supplementary Material 2
Supplementary Material 3
Supplementary Material 4

Acknowledgements

We would like to thank Yu Jiang for his technical support.

Author contributions

YH conceived and designed the experiments. XS and ZY performed the statistical analysis and data upload. ZZ and SL performed the sample DNA extraction. EW provided suggestions for the revision of the manuscript. YJ, CL, and NC provided technical assistance. QX, XL, MW, WW, and EW contributed to the sample collections. YJ provides a data analysis platform. YH provided the laboratories for DNA extraction and statistical analysis. XS drafted the manuscript. All authors read and approved the final manuscript.

Funding

This research has been supported by Technological Innovation 2030- Major Projects (2023ZD040480204); National Key R&D Plan (2022YFD1602310); 2022

Henan Province Central Leading Local Science and Technology Development Fund Project (Z20221343039); Major Science and Technology Projects in Henan Province (221100110200); China Agriculture Research System of MOF and MARA (CARS-37).

Data availability

Sequences are available from the Sequence Read Archive (SRA) database. Bioproject accession number is PRJNA1058368.

Declarations

Ethics approval and consent to participate

All cattle were handled following the guidelines established by the Council for Animal Welfare of China. The protocols for sample collection and animal handling have been approved by the Faculty of Animal Policy and Welfare Committee of Northwest A&F University (FAPWCNWAUFU, Protocol number, NWAFAFAC 1008).

Consent for publication

Not applicable.

Competing interests

The authors declare no competing interests.

Author details

¹College of Animal Science and Technology, Northwest A&F University, No. 22 Xinong Road, Yangling Shaanxi 712100, Shaanxi, People's Republic of China

²Institute of Animal Husbandry, Henan Academy of Agricultural Sciences, Zhengzhou 450002, Henan, People's Republic of China

³Biyang County Xiananniu Technology Development Co., Ltd, Zhumadian 463700, People's Republic of China

⁴Henan Provincial Livestock Technology Promotion Station, Zhengzhou 450008, Henan, People's Republic of China

⁵Shaanxi Agricultural and Animal Husbandry Seed Farm, Shaanxi Fufeng 722203, People's Republic of China

Received: 30 December 2023 / Accepted: 28 May 2024

Published online: 05 June 2024

References

1. Decker JE, McKay SD, Rolf MM, Kim J, Molina Alcalá A, Sonstegard TS, Hanotte O, Götherström A, Seabury CM, Praharani L, et al. Worldwide patterns of ancestry, divergence, and admixture in domesticated cattle. *PLoS Genet*. 2014;10(3):e1004254.
2. Chen N, Cai Y, Chen Q, Li R, Wang K, Huang Y, Hu S, Huang S, Zhang H, Zheng Z, et al. Whole-genome resequencing reveals world-wide ancestry and adaptive introgression events of domesticated cattle in East Asia. *Nat Commun*. 2018;9(1):2337.
3. Chen N, Xia X, Hanif Q, Zhang F, Dang R, Huang B, Lyu Y, Luo X, Zhang H, Yan H et al: Global genetic diversity, introgression, and evolutionary adaptation of indicine cattle revealed by whole genome sequencing. *Nat Commun*. 2023, 14(1):7803.
4. Gao Q, Liu H, Wang Z, Lan X, An J, Shen W, Wan F. Recent advances in feed and nutrition of beef cattle in China — a review. *Anim Biosci*. 2023;36(4):529–39.
5. Wei X, Zhu Y, Zhao X, Zhao Y, Jing Y, Liu G, Wang S, Li H, Ma Y. Transcriptome profiling of mRNAs in muscle tissue of Pinan cattle and Nanyang cattle. *Gene*. 2022;825:146435.
6. Zhang S, Yao Z, Li X, Zhang Z, Liu X, Yang P, Chen N, Xia X, Lyu S, Shi Q, et al. Assessing genomic diversity and signatures of selection in Pinan cattle using whole-genome sequencing data. *BMC Genomics*. 2022;23(1):460.
7. Schafer S, Viswanathan S, Widjaja AA, Lim WW, Moreno-Moral A, DeLaughter DM, Ng B, Patone G, Chow K, Khin E, et al. IL-11 is a crucial determinant of cardiovascular fibrosis. *Nature*. 2017;552(7683):110–5.
8. An B, Xu L, Xia J, Wang X, Miao J, Chang T, Song M, Ni J, Xu L, Zhang L, et al. Multiple association analysis of loci and candidate genes that regulate body size at three growth stages in Simmental beef cattle. *BMC Genet*. 2020;21(1):32.

9. Davila ML, Xu M, Huang C, Gaddes ER, Winter L, Cantorna MT, Wang Y, Xiong N. CCL27 is a crucial regulator of immune homeostasis of the skin and mucosal tissues. *iScience*. 2022;25(6):104426.
10. Xia X, Zhang S, Zhang H, Zhang Z, Chen N, Li Z, Sun H, Liu X, Lyu S, Wang X, et al. Assessing genomic diversity and signatures of selection in Jiaxian Red cattle using whole-genome sequencing data. *BMC Genomics*. 2021;22(1):43.
11. Dragovich MA, Mor A. The SLAM family receptors: potential therapeutic targets for inflammatory and autoimmune diseases. *Autoimmun rev*. 2018;17(7):674–82.
12. Farhangnia P, Ghomi SM, Mollazadehghomi S, Nickho H, Akbarpour M, Delbandi AA. SLAM-family receptors come of age as a potential molecular target in cancer immunotherapy. *Front Immunol*. 2023;14:1174138.
13. Wang N, Halibozek PJ, Yigit B, Zhao H, O’Keefe MS, Sage P, Sharpe A, Terhorst C. Negative regulation of Humoral Immunity due to interplay between the SLAMF1, SLAMF5, and SLAMF6 receptors. *Front Immunol*. 2015;6:158.
14. Yurchenko M, Skjesol A, Ryan L, Richard GM, Kandasamy RK, Wang N, Terhorst C, Husebye H, Espevik T. SLAMF1 is required for TLR4-mediated TRAM-TRIF-dependent signaling in human macrophages. *J Cell Biol*. 2018;217(4):1411–29.
15. O’Connell P, Hyslop S, Blake MK, Godbehere S, Amalfitano A, Aldhamen YA. SLAMF7 signaling reprograms T cells toward exhaustion in the Tumor Micro-environment. *J Immunol (Baltimore Md: 1950)*. 2021;206(1):193–205.
16. O’Connell P, Blake MK, Godbehere S, Amalfitano A, Aldhamen YA. SLAMF7 modulates B cells and adaptive immunity to regulate susceptibility to CNS autoimmunity. *J Neuroinflamm*. 2022;19(1):241.
17. Simmons DP, Nguyen HN, Gomez-Rivas E, Jeong Y, Jonsson AH, Chen AF, Lange JK, Dyer GS, Blazar P, Earp BE, et al. SLAMF7 engagement superactivates macrophages in acute and chronic inflammation. *Sci Immunol*. 2022;7(68):eabf2846.
18. Li Y, Oosting M, Deelen P, Ricaño-Ponce I, Smeekens S, Jaeger M, Matzaraki V, Swertz MA, Xavier RJ, Franke L, et al. Inter-individual variability and genetic influences on cytokine responses to bacteria and fungi. *Nat Med*. 2016;22(8):952–60.
19. Mei C, Junjvlieke Z, Raza SHA, Wang H, Cheng G, Zhao C, Zhu W, Zan L. Copy number variation detection in Chinese indigenous cattle by whole genome sequencing. *Genomics*. 2020;112(1):831–6.
20. Chang YC, Manent J, Schroeder J, Wong SFL, Hauswirth GM, Shylo NA, Moore EL, Achilleos A, Garside V, Polo JM, et al. Nr6a1 controls hox expression dynamics and is a master regulator of vertebrate trunk development. *Nat Commun*. 2022;13(1):7766.
21. Zhang Y, Wang M, Yuan J, Zhou X, Xu S, Liu B. Association of polymorphisms in NR6A1, PLAG1 and VRTN with the number of vertebrae in Chinese tongcheng × large White crossbred pigs. *Anim Genet*. 2018;49(4):353–4.
22. Guo YM, Zhang ZY, Ma JW, Ai HS, Ren J, Huang LS. A genomewide association study of feed efficiency and feeding behaviors at two fattening stages in a White Duroc × Erhualian F population. *J Anim Sci*. 2015;93(4):1481–9.
23. Lindholm-Perry AK, Kuehn LA, Smith TP, Ferrell CL, Jenkins TG, Freely HC, Snelling WM. A region on BTA14 that includes the positional candidate genes LYPLA1, XKR4 and TMEM68 is associated with feed intake and growth phenotypes in cattle(1). *Anim Genet*. 2012;43(2):216–9.
24. Yao Z, Li J, Zhang Z, Chai Y, Liu X, Li J, Huang Y, Li L, Huang W, Yang G, et al. The relationship between MFN1 copy number variation and growth traits of beef cattle. *Gene*. 2022;811:146071.
25. Mariadassou M, Ramayo-Caldas Y, Charles M, Féménia M, Renand G, Rocha D. Detection of selection signatures in Limousin cattle using whole-genome resequencing. *Anim Genet*. 2020;51(5):815–9.
26. Hu Y, Lv J, Fang Y, Luo Q, He Y, Li L, Fan M, Wang Z. Crtc1 Deficiency causes obesity potentially via regulating PPARγ pathway in White Adipose. *Front cell Dev Biology*. 2021;9:602529.
27. Zhang X, Chen X, Qi T, Kong Q, Cheng H, Cao X, Li Y, Li C, Liu L, Ding Z. HSPA12A is required for adipocyte differentiation and diet-induced obesity through a positive feedback regulation with PPARγ. *Cell Death Differ*. 2019;26(11):2253–67.
28. Terefe E, Belay G, Han J, Hanotte O, Tijjani A. Genomic adaptation of Ethiopian indigenous cattle to high altitude. *Front Genet*. 2022;13:960234.
29. Huerta-Sánchez E, Degiorgio M, Pagani L, Tarekegn A, Ekong R, Antao T, Cardona A, Montgomery HE, Cavalleri GL, Robbins PA, et al. Genetic signatures reveal high-altitude adaptation in a set of Ethiopian populations. *Mol Biol Evol*. 2013;30(8):1877–88.
30. Sweet-Jones J, Lenis VP, Yurchenko AA, Yudin NS, Swain M, Larkin DM. Genotyping and whole-genome resequencing of Welsh Sheep Breeds Reveal Candidate Genes and variants for adaptation to local environment and socioeconomic traits. *Front Genet*. 2021;12:612492.
31. Zhao X, Wang C, Wang Y, Zhou L, Hu H, Bai L, Wang J. Weighted gene co-expression network analysis reveals potential candidate genes affecting drip loss in pork. *Anim Genet*. 2020;51(6):855–65.
32. Sambrook J, Fritsch EF, Maniatis T. *Molecular cloning: a Laboratory Manual*. 2nd ed. New York. CSH: Cold Spring Harbor; 1982.
33. Bolger AM, Lohse B, Usadel B. Trimmomatic: a flexible trimmer for Illumina sequence data. *Bioinf (Oxford England)*. 2014;30(15):2114–20.
34. Van der Auwera GA, Carneiro MO, Hartl C, Poplin R, Del Angel G, Levy-Moonshine A, Jordan T, Shakir K, Roazen D, Thibault J et al. From FastQ data to high confidence variant calls: the Genome Analysis Toolkit best practices pipeline. *Current protocols in bioinformatics* 2013, 43(1110):11.10.11–11.10.33.
35. Danecek P, Bonfield JK, Liddle J, Marshall J, Ohan V, Pollard MO, Whitwham A, Keane T, McCarthy SA, Davies RM et al. Twelve years of SAMtools and BCFtools. *GigaScience* 2021, 10(2).
36. Purcell S, Neale B, Todd-Brown K, Thomas L, Ferreira MA, Bender D, Maller J, Sklar P, de Bakker PI, Daly MJ, et al. PLINK: a tool set for whole-genome association and population-based linkage analyses. *Am J Hum Genet*. 2007;81(3):559–75.
37. Zhang C, Dong SS, Xu JY, He WM, Yang TL. PopLDdecay: a fast and effective tool for linkage disequilibrium decay analysis based on variant call format files. *Bioinf (Oxford England)*. 2019;35(10):1786–8.
38. Patterson N, Price AL, Reich D. Population structure and eigenanalysis. *PLoS Genet*. 2006;2(12):e190.
39. Alexander DH, Lange K. Enhancements to the ADMIXTURE algorithm for individual ancestry estimation. *BMC Bioinformatics*. 2011;12:246.
40. Chen C, Chen H, Zhang Y, Thomas HR, Frank MH, He Y, Xia R. TBtools: an integrative Toolkit developed for interactive analyses of big Biological Data. *Mol Plant*. 2020;13(8):1194–202.
41. Tamura K, Stecher G, Kumar S. MEGA11: Molecular Evolutionary Genetics Analysis Version 11. *Mol Biol Evol*. 2021;38(7):3022–7.
42. Nielsen R, Williamson S, Kim Y, Hubisz MJ, Clark AG, Bustamante C. Genomic scans for selective sweeps using SNP data. *Genome Res*. 2005;15(11):1566–75.
43. Danecek P, Auton A, Abecasis G, Albers CA, Banks E, DePristo MA, Handsaker RE, Lunter G, Marth GT, Sherry ST, et al. The variant call format and VCFtools. *Bioinf (Oxford England)*. 2011;27(15):2156–8.
44. DeGiorgio M, Huber CD, Hubisz MJ, Hellmann I, Nielsen R. SweepFinder2: increased sensitivity, robustness and flexibility. *Bioinf (Oxford England)*. 2016;32(12):1895–7.
45. Szpiech ZA, Hernandez RD. Selscan: an efficient multithreaded program to perform EHH-based scans for positive selection. *Mol Biol Evol*. 2014;31(10):2824–7.
46. Bu D, Luo H, Huo P, Wang Z, Zhang S, He Z, Wu Y, Zhao L, Liu J, Guo J, et al. KOBAS-i: intelligent prioritization and exploratory visualization of biological functions for gene enrichment analysis. *Nucleic Acids Res*. 2021;49(W1):W317–25.
47. Xia X, Qu K, Wang Y, Sinding MS, Wang F, Hanif Q, Ahmed Z, Lenstra JA, Han J, Lei C et al. Global dispersal and adaptive evolution of domestic cattle: a genomic perspective. *Stress Biol*. 2023, 3(1):8.
48. Lyu Y, Wang F, Cheng H, Han J, Dang R, Xia X, Wang H, Zhong J, Lenstra JA, Zhang H et al. Recent selection and introgression facilitated high-altitude adaptation in cattle. *Science Bulletin* 2024.
49. Xia XT, Zhang FW, Li S, Luo XY, Peng LX, Dong Z, Pausch H, Leonard AS, Crysnanto D, Wang SK et al. Structural variation and introgression from wild populations in East Asian cattle genomes confer adaptation to local environment. *Genome Biol* 2023, 24(1):211.

Publisher’s Note

Springer Nature remains neutral with regard to jurisdictional claims in published maps and institutional affiliations.