


RESEARCH ARTICLE

Open Access

Fibrin γ/γ' influences the secretion of fibrinolytic components and clot structure



Miriam Cantero^{1,2}, Héctor Rojas³, Eduardo Anglés-Cano⁴ and Rita Marchi^{2*} 

Abstract

Background: In healthy subjects fibrinogen γ/γ' circulates at 8–15% of the total plasma fibrinogen concentration. Elevated levels of this variant have been associated with arterial thrombosis, and its diminution with venous thrombosis. The aims of the present work were to analyze the structure of the fibrin network formed on the top of human dermal microvascular endothelial cells (HMEC-1) at different fibrinogen γ/γ' concentrations, as well as its influence on the secretion of fibrinolytic components.

The kinetics of fibrin polymerization on top of HMEC-1 cells with 3, 10, and 30% fibrinogen γ/γ' was followed at 350 nm. The secretion of urokinase-type plasminogen activator (uPA) and plasminogen activator inhibitor type 1 (PAI 1) by HMEC-1 were measured in the supernatant and cell lysates, after incubation with 1 nM thrombin, fibrin with 3, and 30% fibrinogen γ/γ' , using commercial kits. The influence of fibrinogen γ/γ' on fibrin structure on the surface of the HMEC-1 was followed with laser scanning confocal microscopy (LSCM).

Results: The kinetics of fibrin formation on HMEC-1 with 3 and 10% fibrinogen γ/γ' were similar. However, with 30% fibrinogen γ/γ' both the slope and final turbidity were approximately 50% less. The LSCM images showed the dramatic effects of increasing fibrinogen γ/γ' from 3 to 30%. The uPA and PAI 1 concentrations in culture supernatants HMEC-1 cells treated with thrombin or 30% γ/γ' fibrin were two-fold increased as compared to basal culture supernatants and 3% γ/γ' fibrin-treated HMEC-1. In all stimulatory conditions the intracellular concentration of uPA was higher than in supernatants. In contrast, the intracellular PAI 1 concentration was decreased as compared to that measured in the supernatant, including the basal condition.

Conclusion: A concentration of 30% fibrin γ/γ' alter drastically fibrin structure on the cell surface and affects the secretion of uPA and PAI 1 through its capacity to bind thrombin.

Keywords: Fibrinogen gamma prime (γ), Clot structure, Urokinase plasminogen activator (uPA), Plasminogen activator inhibitor type 1 (PAI 1), Human dermal microvascular endothelial cells (HMEC-1)

Background

Fibrinogen is a soluble plasma protein that polymerizes spontaneously upon cleavage of fibrinopeptides A and B by thrombin. The protein is made up of six polypeptide chains $A\alpha$, $B\beta$ and γ , arranged as a dimer. Fibrinogen comprises a heterogeneous population of molecules. The γ chain has two isoforms, the most abundant form, denoted as γ or γA , represents approximately 80–85% of the total fibrinogen and is homodimeric [1, 2], and the minor isoform denoted as γ' [1] arises from alternative

splicing in intron 9, resulting in the loss of exon 10 and the retention of part of intron 9 in the mRNA [3]. This mRNA translate a new extended γ carboxy-terminal of 20 amino acids VRPEHPAETEDSLYPEDDL ($\gamma'408$ –427) not present in the most abundant isoform (γ 408–411; AGDV) [4]. The γ' chain is present in fibrinogen mostly as a heterodimer (γ/γ') and less than 0.5% as homodimer (γ'/γ') [1, 5]. The γ' chain introduces negative charges to fibrinogen due to the abundance of acidic amino acids and the sulphation of tyrosine residues, with pronounced effects on fibrin (ogen) functions and structure. Fibrinogen participates in primary hemostasis by bridging platelets. The carboxy-terminal of γ chain accomplishes this task through the binding of the AGDV sequence (408–411) to the $\alpha_{IIb}\beta_3$ (GpIIb-IIIa) platelet

* Correspondence: marchi.rita@gmail.com

²Centro de Medicina Experimental, Laboratorio Biología del Desarrollo de la Hemostasia, Instituto Venezolano de Investigaciones Científicas, Caracas, Venezuela

Full list of author information is available at the end of the article



receptor [6]. Because the AGDV stretch is replaced by 20 new amino acids in γ' , this chain does not bind to platelet, and thrombin-induced platelet aggregation is reduced [7].

Fibrinogen γ' binds thrombin and FXIII [8]. The binding of thrombin to γ' reduce its availability in solution [9], and protect its activity from inhibition by antithrombin and heparin [10]. The effects of the binding of γ' chain to the FXIII B subunit are controversial [11]. Moaddel et al. found that FXIII binds to fibrinogen γ/γ' with higher affinity compared to fibrinogen γ/γ , and that fibrinogen γ/γ' had a greater effect on the enhanced activation kinetics of FXIII [12]. However, Gersh and Lord did not find differences [13]. Additionally, Moaddel et al. reported that fibrinogen γ/γ' cross-linked faster and to a greater extent [12]. However, Siebenlist et al. found that fibrinogen γ/γ' and plasma FXIII complex down regulates the activity of plasma FXIII crosslinking [14].

Moreover, fibrinogen γ' has an anticoagulant effect by diminishing FVIII and FV activation, and increases plasma activated protein C sensitivity [15–17].

The clot architecture is influenced by fibrinogen and thrombin concentrations, ionic strength and pH [18] as well as binding and crosslinking of different plasma proteins [19]. Several groups have shown that clots formed with fibrinogen γ' have thinner fibers and small pores [20, 21], decreased stiffness [22], and are more resistant to lysis [23]. Considering the structural and functional modifications introduced by this minor γ chain isoform, it is not surprising that fibrinogen γ' has emerged as a risk factor for cardiovascular disease [24]. The reports of biochemical changes induced in cultured endothelial cells by fibrin [25, 26], led us to hypothesize that fibrinogen γ' chain may influence fibrin polymerization and endothelial cell secretion of fibrinolytic components. The aim of the present work was therefore to determine whether different proportions of γ' chain influences fibrin polymerization on model endothelial cells (the human microvascular endothelial cell line, HMEC-1) that might affect the secretion of the plasminogen activator synthesized by HMEC-1 (uPA) and its inhibitor PAI 1.

Results

Fibrin formation on HMEC-1

The kinetics of fibrin formation at 3 and 10% fibrinogen γ/γ' in the presence of HMEC-1 cells were similar to those without cells (Fig. 1; Table 1). However, the lag time was lengthened in the presence of fibrinogen γ/γ' higher than 3%, regardless of the presence of cells. Clots formed with 30% of fibrinogen γ/γ' were less turbid, and the rate of fibrin formation slower as compared to clots formed with 3 and 10% fibrinogen γ/γ' ($p < 0.05$), with or without cells (Fig. 1). In the presence of cells, the fibrin formed with 30% fibrinogen γ/γ' increases 2-times the

MaxAbs and 1.4-times the slope compared to the fibrin formed with 30% fibrinogen γ/γ' without cells.

HMEC-1 uPA and PAI 1 secretion under different stimulation conditions

The amounts of uPA secreted by HMEC-1 in the presence of thrombin or 30% fibrin γ/γ' were similar, and approximately 2-times greater than that secreted under basal conditions or in the presence of 3% fibrin γ/γ' ($p < 0.05$) (Table 2). The uPA concentration inside the cells was 4, 6 and 8-times higher in the presence of 3% fibrin γ/γ' , thrombin and 30% fibrin γ/γ' , respectively, compared to basal condition (Table 2).

The PAI 1 secreted to the medium was 1.3, 2.3 and 2.5 times higher in 3% γ/γ' , 30% γ/γ' and thrombin, respectively, compared to the basal condition (Table 2). The PAI 1 stored inside the cell increased significantly in the presence of thrombin alone or 30% γ/γ' (1.4-times and 1.7-times, respectively; Table 2).

The comparison between the extra- and intracellular uPA and PAI 1 concentrations are shown in Fig. 2. The uPA secreted to the medium was lesser compared to that present inside the cells for 3% γ/γ' , 30% γ/γ' , and thrombin ($p < 0.05$) (Fig. 2a). In contrast, the PAI 1 concentration was higher in the supernatant compared to that inside the cells in all the conditions used ($p < 0.05$), (Fig. 2b).

Expression of uPA receptor by HMEC-1

The strategy used to measure the presence of the receptor was its capacity to bind uPA. Receptor-bound uPA was then detected by its ability to convert plasminogen into plasmin, which was detected with the chromogenic substrate S-2251. A representative experiment is shown in Fig. 3, at 10 and 20 nM uPA, demonstrating the presence of uPA receptors at the plasma membrane of HMEC-1 cells.

Fibrin interaction with HMEC-1

The interaction of the 3% γ/γ' fibrin with HMEC-1 is shown in Figs. 4, and 30% γ/γ' fibrin in Fig. 5. The most representative fields from different experiments were selected. As it can be clearly seen, fibers from 3% γ/γ' fibrin were much less stressed in between cells compared to 30% γ/γ' fibrin. At this γ/γ' concentration, cells detached from the dish, and formed a round clump of cells surrounded by stressed fibers. The fibers of 30% γ/γ' fibrin were appreciably thinner compared to 3% γ/γ' fibrin.

Discussion

In healthy individuals fibrinogen γ' comprises 8–15% of total fibrinogen [27]. This minor fibrinogen variant has been found increased in arterial thrombosis and diminished in venous thrombosis [8], which has been the object of extensive research. However, this is the first time

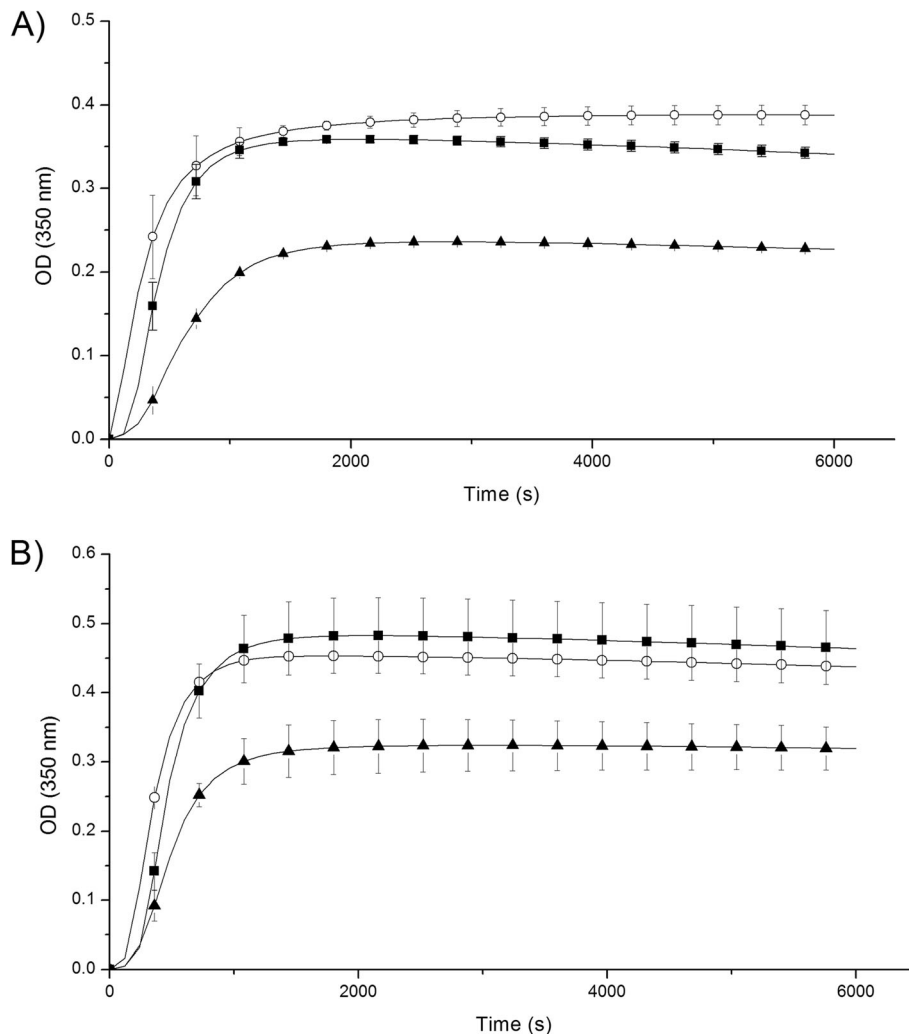


Fig. 1 Kinetics of fibrin formation at different fibrinogen γ/γ' concentrations. Clots were formed by mixing purified or commercial fibrinogen γ/γ' and γ/γ' with 1 nM thrombin and 2 mM CaCl_2 , final concentrations. The OD changes were recorded at 350 nm each 2 min, during 1 h 40 min. **A** Clot formed on the top HMEC-1. **B** Clot formed without HMEC-1. Fibrinogen γ/γ' 3% (○); fibrinogen γ/γ' 10% (■); fibrinogen γ/γ' 30% (▲)

Table 1 Summary of fibrin polymerization kinetics at different fibrinogen γ/γ' concentrations on HMEC-1. Results are expressed as mean \pm standard error (SE). Experiments were performed each time in triplicate in three independent experiments

γ/γ' (%)	MaxAbs (mOD)		Slope (mOD/min)		LT (min)	
	+Cell	-Cell	+Cell	-Cell	+Cell	-Cell
3	440 \pm 20	390 \pm 10	60 \pm 2	45 \pm 10	0	0
10	460 \pm 50	340 \pm 30	60 \pm 5	49 \pm 6	3	3
30	320 \pm 30*	230 \pm 30*	36 \pm 2*	20 \pm 6*	3	3

(+) Cell: in the presence of HMEC-1 cells; (-): in the absence of HMEC-1 cells
 * $p < 0.05$: Fibrin formed in the absence or on HMEC-1 culture at 30% γ/γ' , compared to that of 3 and 10% γ/γ'

Table 2 Effect of fibrin γ/γ' on secretion of uPA and PAI 1 by HMEC-1. Results are expressed as mean \pm standard error (SE). Experiments were performed each time in triplicate in three independent experiments

	uPA		PAI 1	
	SN	CL	SN	CL
Basal	0.56 \pm 0.09	0.40 \pm 0.01	2569 \pm 344	1055 \pm 85
3% γ/γ'	0.39 \pm 0.13	1.73 \pm 0.11** ζ	3398 \pm 436	770 \pm 74
30% γ/γ'	1.06 \pm 0.04*	3.21 \pm 0.03**	5976 \pm 918*	1845 \pm 201*
Thrombin	1.04 \pm 0.09*	2.42 \pm 0.48**	6464 \pm 455*	1422 \pm 229*

SN: supernatant; CL: cell lysate (1000 cells/ μL). uPA and PAI 1 concentrations are in ng/mL

* $p < 0.05$ when compared to the basal condition and 3% fibrin γ/γ'

** $p < 0.05$ when compared to the basal condition

$\zeta p < 0.05$ when compared to 30% fibrin γ/γ'

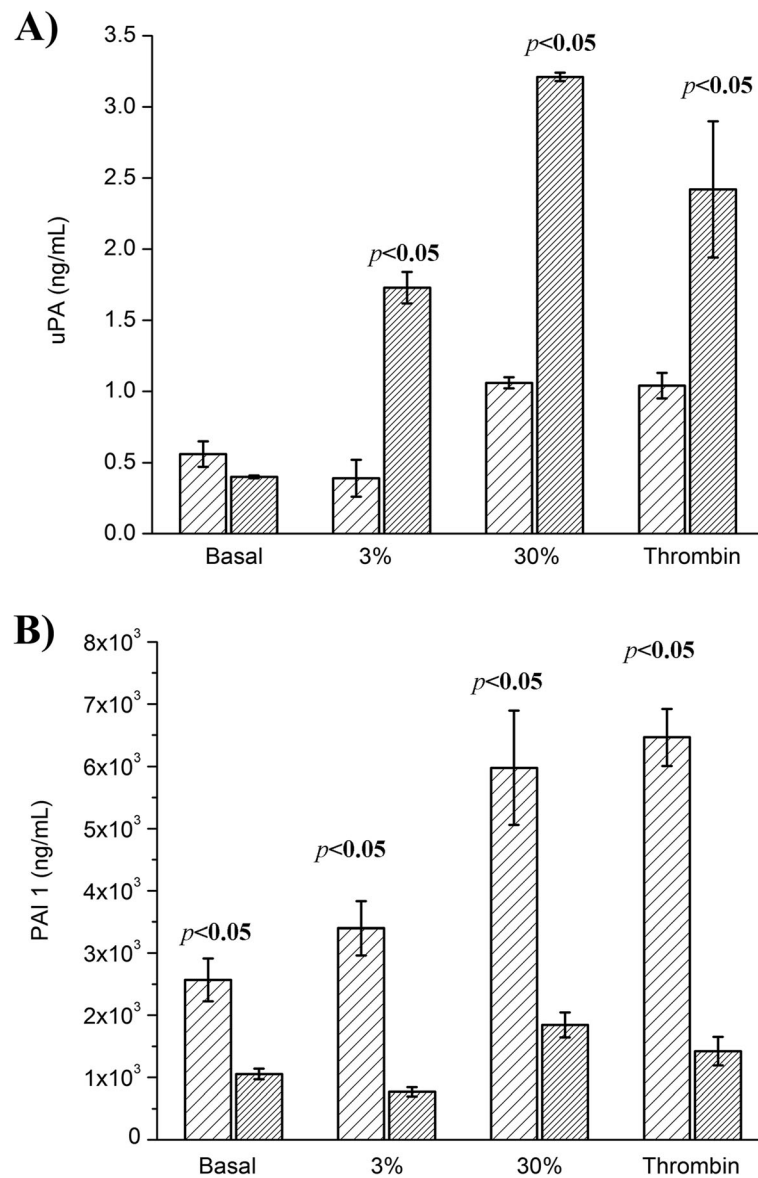
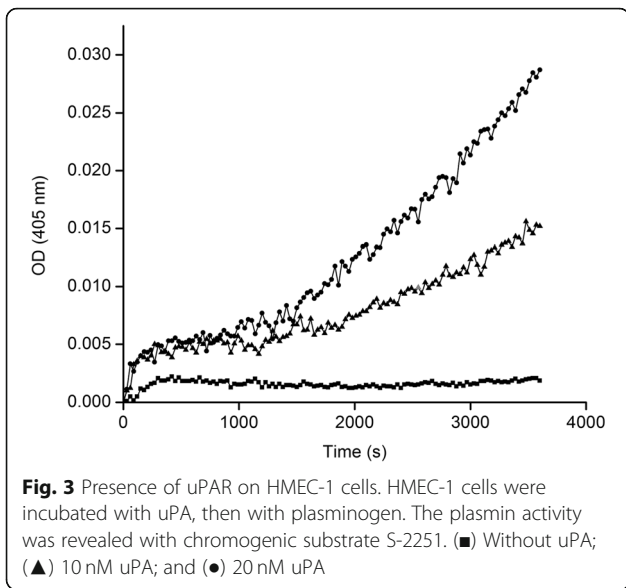


Fig. 2 uPA and PAI 1 concentration under different stimulation conditions. The basal and thrombin condition consisted of HMEC-1 culture incubated with medium + 10% FBS and 1 nM thrombin and 2 mM CaCl₂, respectively. The 3 and 30% fibrin γ/γ' conditions consisted of HMEC-1 culture incubated with clots formed with purified fibrinogen (3% γ/γ') and 30% fibrinogen γ/γ' (by mixing commercial fibrinogen γ/γ and γ/γ'). A) uPA (ng/mL) and B) PAI 1 (ng/mL) quantified by ELISA in the supernatant (hatched) and cell lysate (solid). The uPA concentration in the supernatant of basal condition was similar to that of cell lysate, while those of thrombin, 3 and 30% fibrin γ/γ' were significantly higher in the cell lysate ($p < 0.05$). Instead, the PAI 1 concentration was higher in the supernatant in all stimulatory and basal conditions ($p < 0.05$).

that the effects of fibrin (ogen) γ/γ' on endothelial cells are reported.

The main finding of the present work is that fibrin (ogen) γ/γ' levels alter the secretion of the fibrinolytic components uPA and PAI 1 thus mimicking the effect of thrombin. In order to imitate physiological conditions or to reach pathological levels of fibrinogen γ/γ' described in the literature, this variant was mixed with fibrinogen γ/γ , differing from previous studies where either purified [20–22, 28] or recombinant [29, 30] fibrinogen γ/γ or fibrinogen γ/γ' were used.

The effect of fibrinogen γ/γ' on fibrin formation was studied at three different γ/γ' concentrations: 3, 10 and 30%. At 3 and 10% the kinetics of fibrin formation were similar. In contrast, at 30% γ/γ' the slope and final turbidity decreased approximately 2-fold, in the absence of cells. However, when clots were formed on the top of HMEC-1 cells, the differences were more subtle (1.7 and 1.3, respectively). Cooper et al. [20] using 100% fibrinogen γ/γ and fibrinogen γ/γ' , purified from plasma, obtained similar results (2-fold differences in final

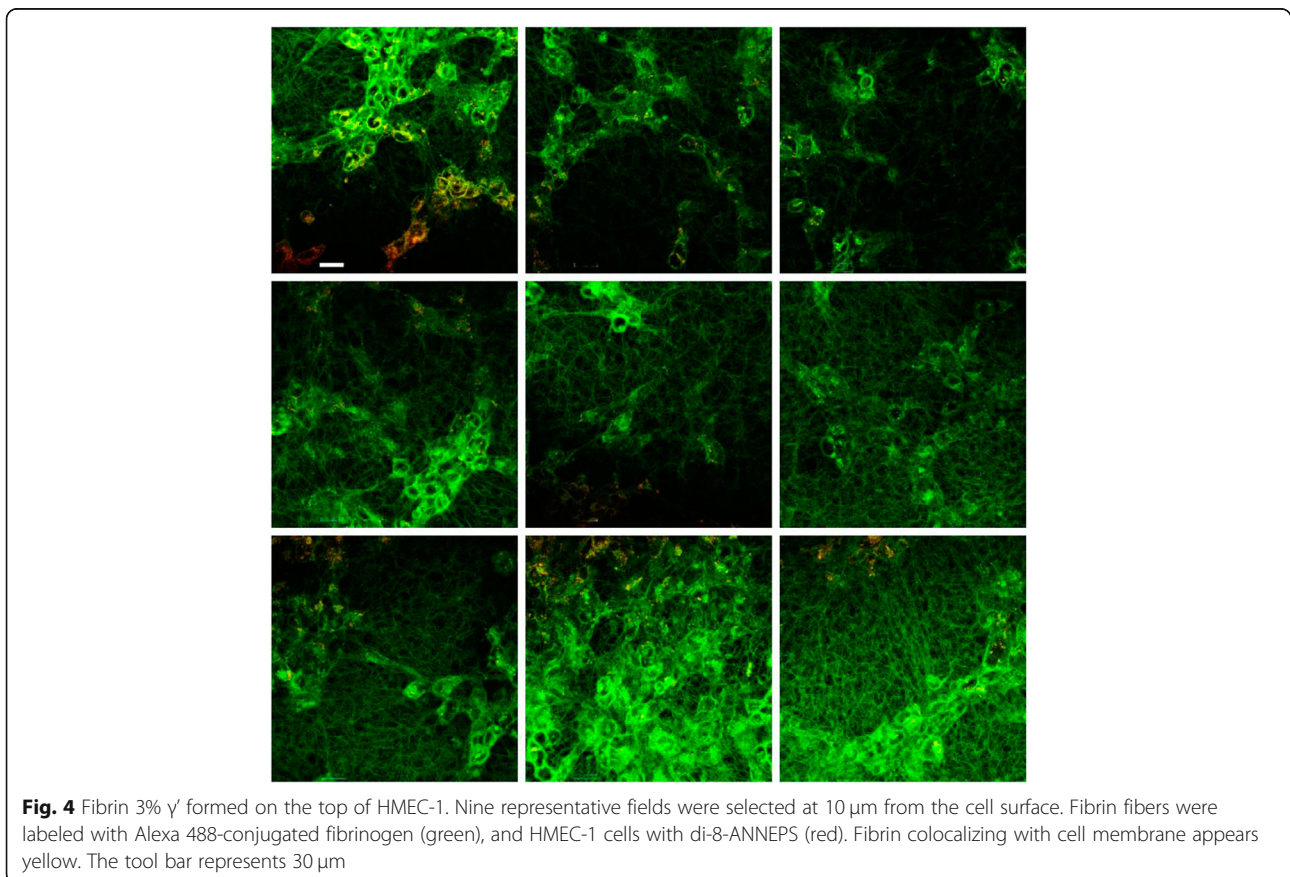


turbidity; the slope of the curves were not reported), and Gersh et al. [30] working with recombinant fibrinogen, reported a decrease of the slope and final turbidity of 2 and 1.5-fold, respectively. It is noteworthy that apparently, a content of 30% of fibrinogen γ/γ' induced a

similar effect in the kinetics of fibrin formation to that of 100% fibrinogen γ/γ' .

Thrombin has a spectrum of effects on different cell types including platelets, endothelial cells, and fibroblasts [31]. In endothelial cells, thrombin enhances the synthesis of tissue type plasminogen activator (tPA) and its inhibitor, plasminogen activator inhibitor type 1 (PAI 1). We investigated the effects of the γ/γ' fibrin content on the secretion of fibrinolytic components by HMEC-1 cells. It has been previously demonstrated that HMEC-1 cells synthesize PAI 1 and uPA but not tPA [32–34].

Since the kinetics of fibrin formation with 3 and 10% of γ/γ' were similar, it was decided to compare a low and high fibrin content of γ/γ' of 3 and 30%, respectively. When cells were incubated with 1 nM thrombin alone (the same quantity used to form clots on the top of the cells) or 30% of γ/γ' , the secretion of uPA was increased 2-times as compared to the basal condition and 3% of γ/γ' , indicating that 30% of γ/γ' clot's content had the same effect as thrombin alone to activate this microvasculature cell line. The uPA concentrations in the cell lysate were greater than those found in the supernatant in all stimulatory conditions. Probably at the time that the cells were lysed (after 12 h of incubation) the majority of uPA was not secreted to the extracellular medium, or recaptured by its receptor. In addition, the



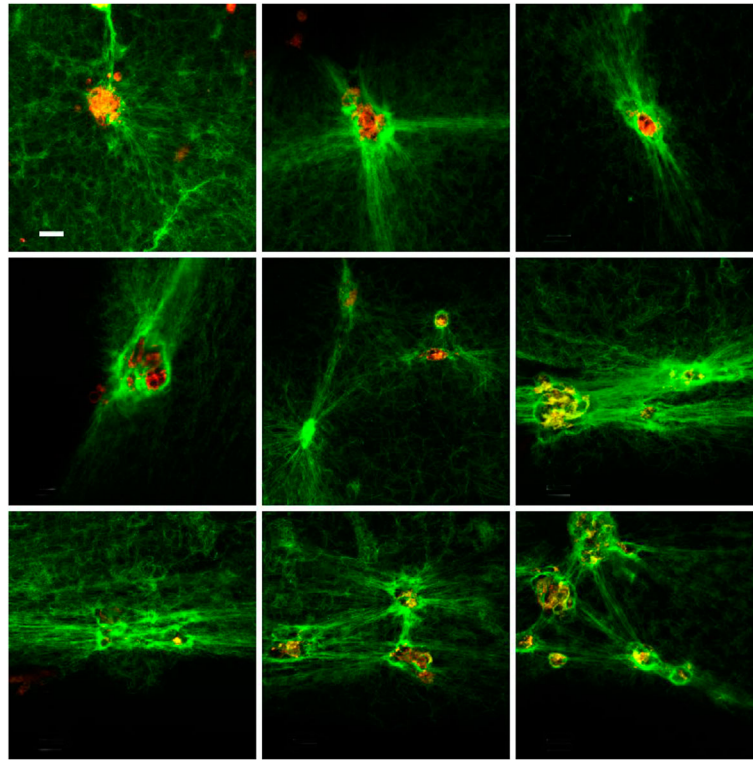


Fig. 5 Fibrin 30% γ/γ' formed on the top of HMEC-1. Nine representative fields were selected at 10 μm from the cell surface. Fibrin fibers were labeled with Alexa 488-conjugated fibrinogen (green), and HMEC-1 cells with di-8-ANNEPS (red). Fibrin colocalizing with cell membrane appears yellow. The tool bar represents 30 μm

incubation of the cells with 30% of γ/γ' produced the highest amount of uPA inside the cells. Like uPA, the PAI 1 concentration was higher in the presence of thrombin and 30% of γ/γ' , both in the supernatant and cell lysate. But in contrast to uPA, the intracellular PAI 1 concentration was diminished in the cell lysate compared with the supernatant (in between 4.5 and 3-time less, respectively). Since the γ' chain binds thrombin through exosite II [35], increasing the γ/γ' content of the clot the quantity of thrombin bound to fibrin would consequently be augmented, concentrating thrombin on the cell surface. Therefore, the cellular effects observed with fibrinogen γ/γ' can be attributed to the thrombin bound to the γ' chain, and not to the fibrinogen γ/γ' per se.

Several groups have reported the effects of fibrinogen γ/γ' on clot structure, including diminished fiber diameter, increased fiber tapered ends, inhomogeneities in the network, i.e. areas with greater pore size, and recently it was published that changes introduced by fibrinogen γ/γ' were due to its effects on protofibrils formation due to the repulsive forces between the highly negative charges content at the γ' -C-termini that impairs the D-D contacts when two γ' chains are aligned, shortening the length of the protofibrils, such that the network gelled earlier [36], and probably reflected in a prolonged lag time.

The present work has several limitations. First, the cell line used do not secrete tPA, in the future other cell line, as HUVEC or EA. Hy926, should be used for a more physiological or pathological simulation of in vivo situation. Furthermore, the consequences of the increased secretion of fibrinolytic components at high fibrin γ/γ' should be tested.

Further investigations on cellular effects of fibrinogen γ/γ' could shed light on thrombotic mechanisms related to its increase in arterial thrombosis or to its decrease in venous thrombosis.

Conclusions

A concentration of 30% fibrin γ/γ' alter drastically fibrin structure on the cell surface, and affects the secretion of uPA and PAI 1 through its capacity to bind thrombin.

Probably, the deleterious effects of increasing fibrinogen γ/γ' content in arterial thrombosis are related to the corresponding increase in the quantity of thrombin bound to the clot.

Methods

Fibrinogen purification

Plasma was supplemented with 200 U/mL aprotinin, 1 mM phenylmethylsulfonyl fluoride (PMFS), 5 mM etilendiaminotetracetic acid disodium salt (EDTA Na₂), and applied to

a Lysine-Sepharose® (Health Care, USA) column in order to remove plasminogen [37]. Then fibrinogen was precipitated with β -alanine, essentially as described [38]. Briefly, vitamin K- dependent proteins were adsorbed first with 2.4 mg/mL $MgSO_4$ and then twice with 90 g/L $BaSO_4$. The supernatant was precipitated thrice with 6 M β -alanine (2.7 M, final), with gentle stirring during 30 min at room temperature (RT), then centrifuged at 2000 g for 30 min at 4 °C. Each time the pellet was dissolved with Tris-saline buffer (TSB) pH 7.4 (50 mM Tris, 0.15 M NaCl) supplemented with 0.1 M epsilon aminocaproic acid (EACA). The pellet of the last precipitation was dissolved in TSB pH 7.4 and dialyzed overnight against the same buffer. The clottability of purified protein was > 90%. The purified fibrinogen was depleted of plasminogen, contaminated mainly with FXIII, and the integrity of the fibrinogen chains was confirmed by SDS/PAGE.

Fibrin polymerization on the surface of HMEC-1 cell at different fibrinogen γ' concentrations

Cell culture

MCDB131 medium (GIBCO, USA) supplemented with 10% foetal bovine serum (FBS) (GIBCO, USA), 100 U/mL penicillin (GIBCO, USA), 100 μ g/mL streptomycin (GIBCO, USA), 200 mM L-glutamine (GIBCO, USA), and 10 ng/mL epidermal growth factor (Invitrogen, USA) was used to suspend and cultivate HMEC-1 cells.

The cells (100,000 cells/well) were seeded on 96-well microtiter plate (Thermo Scientific Nunc, USA), and cultivated overnight essentially as described elsewhere [39].

Clot formation on the top of HMEC-1 monolayer

In an eppendorf tube were added 143 μ L purified fibrinogen 1 mg/mL (3% fibrinogen γ/γ' , quantified by ELISA [40]), 1 mg/mL 10 and 30% fibrinogen γ/γ' (prepared by mixing commercial γ/γ and γ/γ' fibrinogen, Enzyme Research Laboratories, USA), 40 μ L MCDB 131 medium without supplements, and 17.5 μ L bovine thrombin (Sigma, USA) – $CaCl_2$ (1 nM and 2 mM, respectively, final concentrations), and the mixture immediately transferred on the top of the cells or directly to the bottom of the well (control clots without cells). The optical density (OD) was read every 2 min at 350 nm in an Infinite 200 M (Tecan, Vienna, Austria). Experiments were performed each time in triplicate in three independent experiments. The kinetic of fibrin formation was characterized by measuring the lag time (min), slope (mOD/min) and final turbidity (mOD).

HMEC-1 uPA and PAI 1 secretion under different stimulation conditions

HMEC-1 cells were seeded (100,000 cells/well) on 96 wells plates. When the culture reached approximately 80% confluence, 100 μ L of fibrinogen solution containing

3 and 30% of fibrinogen γ' , clotted with thrombin- $CaCl_2$ (1 nM - 2 mM, respectively, final) was gently added on the cell surface. The plates were kept for 30 min in the incubator (5% CO_2 in a moist environment), then 200 μ L/well of supplemented medium was added and incubated again for 12 h. The control conditions were the cells cultivated during 12 h in the presence of medium with or without 10% FBS, or with thrombin – $CaCl_2$ (1 nM - 2 mM, respectively).

The plates were centrifuged at 1000 g \times 10 min and the supernatants (SN) were collected, aliquoted and stored at – 80 °C. The cells were lysed essentially as described [41]. The uPA and PAI 1 concentrations in supernatants and cell lysates were measured using uPA and PAI 1 ELISA kits (Sekisui-Diagnostic, Germany), according to the manufacturer's recommendations. The ODs obtained were normalized dividing by the OD of the control condition of cells cultivated during 12 h without FBS. Each condition was tested in triplicate in three independent experiments.

Determination of uPA receptor (uPAR) in HMEC-1

A citoELISA was performed in order to determine if HMEC-1 cells express uPAR. The assay is based on the assumption that if uPAR was present it will bind uPA, and uPA will cleave plasminogen to plasmin, and plasmin will cleave the Lys-pNA bond of S2251 substrate. Briefly, HMEC-1 cells were seeded (100,000 cells/well) on 96 well plates. When the culture reached approximately 80% confluence, the monolayer was washed three times with phosphate buffered saline (PBS) + 4 mg/mL albumin. Then, the monolayer of cells were incubated with 10 and 20 nM uPA (American Diagnostica inc. USA) for 1 h at 37 °C. After incubation, the cells were washed three times with PBS-albumin, 50 μ L 0.5 μ M plasminogen (American Diagnostica inc. USA) and 50 μ L of 0.6 mM S-2251 (Chromogenix, Italy) were added. The plate was immediately transferred to a TECAN Infinite 200 M, and OD was read at 405 nm each 30 s during 1 h. The assay was performed in three independent experiments by duplicate.

Fibrin interaction with HMEC-1

The procedure used was essentially as described previously [39]. Briefly, HMEC-1 cell membrane was stained with 4 μ M di-8-ANEPPS (Molecular Probes, USA), and washed three times with 50 mM Tris, 0.15 M NaCl, pH 7.4 (supplemented with 20% MCDB-131 and 200 mM glutamine). Clots were formed on the cell surface by mixing 1 mg/mL fibrinogen (3 and 30% fibrinogen γ/γ'), supplemented with Alexa Fluor® 488 (Molecular Probes, USA)-conjugated fibrinogen, and thrombin- $CaCl_2$ (1 nM and 1 mM, respectively, final). Polymerization was allowed to proceed for 2 h in the culture incubator, and then the clot structure on the surface of HMEC-1 was

visualized using a Nikon Eclipse TE 2000-U laser microscope (with a 488 nm Argon or 543 nm HeNe laser). Image acquisition and processing were done as described elsewhere [39]. The quantification of the images was not included, since the measurement of fibrin density and width did not reflect the differences observed by LSCM.

Statistical analysis

Results are expressed as mean \pm standard error (SE). A two-way ANOVA was performed, with factor 1 as the experiment: clots without cells vs. clots with cells and factor 2, the different γ/γ' fibrinogen concentrations. The effects of the different conditions used on uPA and PAI 1 secretion: controls and different γ/γ' fibrinogen concentrations were analyzed by a one-way ANOVA, after a Shapiro-Wilk test for normality, Levene test for variance homogeneity, and a posteriori Tukey test. Furthermore, two way ANOVA analysis was performed in order to compare the differences between uPA and PAI 1 secretion at the different conditions used, and in the lysed cells. The SPSS 17.0 for windows (SPSS, Chicago, IL), and Origin Pro 8.1 software were used. A $p < 0.05$ was considered statistically significant.

Abbreviations

EACA: Epsilon aminocaproic acid; EDTA Na₂: Etilendiaminetetracetic acid disodium salt; ELISA: Enzyme linked immunosorbent assay; FBS: Foetal bovine serum; HMEC-1: Human dermal microvascular endothelial cells; LSCM: Laser scanning confocal microscopy; OD: Optical density; PAI 1: Plasminogen activator inhibitor type 1; PBS: Phosphate buffered saline; PMFS: Phenylmethylsulfonyl fluoride; RT: Room temperature; SN: Supernatant; tPA: Tissue type plasminogen activator; TSB: Tris-saline buffer; uPA: Urokinase-type plasminogen activator

Acknowledgements

We want to thank to Dr. Edwin Ades, Department of Health and Human Services Centers for Disease Control and Prevention (CDC, Atlanta USA) for the donation of the human dermal microvascular endothelial cell (HMEC-1). To Dr. John Weisel, from University of Pennsylvania (Philadelphia, PA, USA) for his contribution with reagents that make this work possible, and critical reading and suggestions of the present work.

Authors' contributions

RM designed and supervised the entire study, participated in analyzing data and wrote the manuscript. EAC participated in the design of the study, analyzed data and manuscript writing. MC performed most of the experiments and processed the data. HR performed the LSCM experiments, and processed and quantified the images. All authors read and approved the final manuscript.

Funding

This research was supported by the Institut National de la Santé et de la Recherche Médicale (INSERM) and by the Agence National pour la Recherche grant ANR-16-CE29-0009-02 to EAC.

Availability of data and materials

All data generated or analyzed during this study are included in this published article.

Ethics approval and consent to participate

Not Applicable.

Consent for publication

Not Applicable.

Competing interests

The authors declare that they have no competing interests.

Author details

¹Departamento de Bioquímica, Universidad de Córdoba, Córdoba, Colombia. ²Centro de Medicina Experimental, Laboratorio Biología del Desarrollo de la Hemostasia, Instituto Venezolano de Investigaciones Científicas, Caracas, Venezuela. ³Instituto de Inmunología, Universidad Central de Venezuela, Caracas, Venezuela. ⁴Université de Paris, Innovative Therapies in Haemostasis, INSERM, F-75006 Paris, France.

Received: 19 June 2019 Accepted: 15 October 2019

Published online: 01 November 2019

References

- Wolfenstein-Todel C, Mosesson MW. Human plasma fibrinogen heterogeneity: evidence for an extended carboxyl-terminal sequence in a normal gamma chain variant (gamma). *Proc Natl Acad Sci U S A*. 1980;77:5069–73.
- Mosesson MW, Finlayson JS. Subfractions of human fibrinogen; preparation and analysis. *J Lab Clin Med*. 1963;62:663–74.
- Chung DW, Davie EW. Gamma and gamma' chains of human fibrinogen are produced by alternative mRNA processing. *Biochemistry*. 1984;23:4232–6.
- Fornace AJ Jr, Cummings DE, Comeau CM, Kant JA, Crabtree GR. Structure of the human gamma-fibrinogen gene. Alternate mRNA splicing near the 3' end of the gene produces gamma a and gamma B forms of gamma-fibrinogen. *J Biol Chem*. 1984;259:12826–30.
- Meh DA, Siebenlist KR, Mosesson MW. Identification and characterization of the thrombin binding sites on fibrin. *J Biol Chem*. 1996;271:23121–5.
- Kloczewiak M, Timmons S, Hawiger J. Localization of a site interacting with human platelet receptor on carboxy-terminal segment of human fibrinogen gamma chain. *Biochem Biophys Res Commun*. 1982;107:181–7.
- Lancellotti S, Rutella S, De Filippis V, Pozzi N, Rocca B, De Cristofaro R. Fibrinogen-elongated gamma chain inhibits thrombin-induced platelet response, hindering the interaction with different receptors. *J Biol Chem*. 2008;283:30193–204.
- Macrae FL, Domingues MM, Casini A, Ariens RA. The (Patho) physiology of fibrinogen gamma'. *Semin Thromb Hemost*. 2016;42:344–55.
- Mosesson MW. Update on antithrombin I (fibrin). *Thromb Haemost*. 2007;98:105–8.
- Fredenburgh JC, Stafford AR, Leslie BA, Weitz JI. Bivalent binding to gammaA/gamma'-fibrin engages both exosites of thrombin and protects it from inhibition by the antithrombin-heparin complex. *J Biol Chem*. 2008;283:2470–7.
- Uitte de Willige S, Standeven KF, Philippou H, Ariens RA. The pleiotropic role of the fibrinogen gamma' chain in hemostasis. *Blood*. 2009;114:3994–4001.
- Moaddel M, Farrell DH, Daugherty MA, Fried MG. Interactions of human fibrinogens with factor XIII: roles of calcium and the gamma' peptide. *Biochemistry*. 2000;39:6698–705.
- Gersh KC, Lord ST. An investigation of factor XIII binding to recombinant gamma'/gamma' and gamma/gamma' fibrinogen (abstract). *Blood*. 2006;108:485a.
- Siebenlist KR, Meh DA, Mosesson MW. Protransglutaminase (factor XIII) mediated crosslinking of fibrinogen and fibrin. *Thromb Haemost*. 2001;86:1221–8.
- Lovely RS, Boshkov LK, Marzec UM, Hanson SR, Farrell DH. Fibrinogen gamma' chain carboxy terminal peptide selectively inhibits the intrinsic coagulation pathway. *Br J Haematol*. 2007;139:494–503.
- Omarova F, Uitte De Willige S, Ariens RA, Rosing J, Bertina RM, Castoldi E. Inhibition of thrombin-mediated factor V activation contributes to the anticoagulant activity of fibrinogen gamma'. *J Thromb Haemost*. 2013;11:1669–78.
- Omarova F, Uitte de Willige S, Simioni P, Ariens RA, Bertina RM, Rosing J, et al. Fibrinogen gamma' increases the sensitivity to activated protein C in normal and factor V Leiden plasma. *Blood*. 2014;124:1531–8.
- Weisel JW, Nagaswami C. Computer modeling of fibrin polymerization kinetics correlated with electron microscope and turbidity observations: clot structure and assembly are kinetically controlled. *Biophys J*. 1992;63:111–28.
- Lord ST. Fibrinogen and fibrin: scaffold proteins in hemostasis. *Curr Opin Hematol*. 2007;14:236–41.
- Cooper AV, Standeven KF, Ariens RA. Fibrinogen gamma-chain splice variant gamma' alters fibrin formation and structure. *Blood*. 2003;102:535–40.

21. Siebenlist KR, Mosesson MW, Hernandez I, Bush LA, Di Cera E, Shainoff JR, et al. Studies on the basis for the properties of fibrin produced from fibrinogen-containing gamma' chains. *Blood*. 2005;106:2730–6.
22. Allan P, Uitte de Willige S, Abou-Saleh RH, Connell SD, Ariens RA. Evidence that fibrinogen gamma' directly interferes with protofibril growth: implications for fibrin structure and clot stiffness. *J Thromb Haemost*. 2012;10:1072–80.
23. Falls LA, Farrell DH. Resistance of gammaA/gamma' fibrin clots to fibrinolysis. *J Biol Chem*. 1997;272:14251–6.
24. Rein-Smith CM, Anderson NW, Farrell DH. Differential regulation of fibrinogen gamma chain splice isoforms by interleukin-6. *Thromb Res*. 2013;131:89–93.
25. Ribes JA, Francis CW, Wagner DD. Fibrin induces release of von Willebrand factor from endothelial cells. *J Clin Invest*. 1987;79:117–23.
26. Schleef RR, Birdwell CR. Biochemical changes in endothelial cell monolayers induced by fibrin deposition in vitro. *Arteriosclerosis*. 1984;4:14–20.
27. Ariens RA. Fibrin (ogen) and thrombotic disease. *J Thromb Haemost*. 2013; 11(Suppl 1):294–305.
28. Kim PY, Vu TT, Leslie BA, Stafford AR, Fredenburgh JC, Weitz JI. Reduced plasminogen binding and delayed activation render gamma'-fibrin more resistant to lysis than gammaA-fibrin. *J Biol Chem*. 2014;289:27494–503.
29. Collet JP, Nagaswami C, Farrell DH, Montalescot G, Weisel JW. Influence of gamma' fibrinogen splice variant on fibrin physical properties and fibrinolysis rate. *Arterioscler Thromb Vasc Biol*. 2004;24:382–6.
30. Gersh KC, Nagaswami C, Weisel JW, Lord ST. The presence of gamma' chain impairs fibrin polymerization. *Thromb Res*. 2009;124:356–63.
31. Mandl-Weber S, Haslinger B, Sitter T. Thrombin upregulates production of plasminogen activator inhibitor type 1 in human peritoneal mesothelial cells. *Perit Dial Int*. 1999;19:319–24.
32. Lacroix R, Sabatier F, Mialhe A, Basire A, Pannell R, Borghi H, et al. Activation of plasminogen into plasmin at the surface of endothelial microparticles: a mechanism that modulates angiogenic properties of endothelial progenitor cells in vitro. *Blood*. 2007;110:2432–9.
33. Lacroix R, Plawinski L, Robert S, Doeuve L, Sabatier F, Martinez S, et al. Leukocyte- and endothelial-derived microparticles: a circulating source for fibrinolysis. *Haematologica*. 2012;97:1864–72.
34. Doeuve L, Plawinski L, Goux D, Vivien D, Anglés-Cano E. Plasmin on adherent cells: from microvesiculation to apoptosis. *Biochem J*. 2010;432:365–73.
35. Lovely RS, Moaddel M, Farrell DH. Fibrinogen gamma' chain binds thrombin exosite II. *J Thromb Haemost*. 2003;1:124–31.
36. Domingues MM, Macrae FL, Duval C, McPherson HR, Bridge KI, Ajjan RA, et al. Thrombin and fibrinogen gamma' impact clot structure by marked effects on intrafibrillar structure and protofibril packing. *Blood*. 2016;127:487–95.
37. Deutsch DG, Mertz ET. Plasminogen: purification from human plasma by affinity chromatography. *Science*. 1970;170:1095–6.
38. Jakobsen E, Kierulf P. A modified beta-alanine precipitation procedure to prepare fibrinogen free of antithrombin-III and plasminogen. *Thromb Res*. 1973;3:145–9.
39. Castillo O, Rojas H, Domínguez Z, Angles-Cano E, Marchi R. Endothelial fibrinolytic response onto an evolving matrix of fibrin. *BMC Hematol*. 2016;16:9.
40. Cantero M, Cardinali B, Marchi R. Purification of fibrinogen gamma A/ gamma prime ($\gamma A/\gamma'$) by fast protein liquid chromatography. *Rev Colomb Quim*. 2018;47:24–30.
41. Cermak J, Key NS, Bach RR, Balla J, Jacob HS, Vercellotti GM. C-reactive protein induces human peripheral blood monocytes to synthesize tissue factor. *Blood*. 1993;82:513–20.

Publisher's Note

Springer Nature remains neutral with regard to jurisdictional claims in published maps and institutional affiliations.

Ready to submit your research? Choose BMC and benefit from:

- fast, convenient online submission
- thorough peer review by experienced researchers in your field
- rapid publication on acceptance
- support for research data, including large and complex data types
- gold Open Access which fosters wider collaboration and increased citations
- maximum visibility for your research: over 100M website views per year

At BMC, research is always in progress.

Learn more biomedcentral.com/submissions

