

CORRECTION

Open Access



Correction to: Dissecting of the Deterioration in Eating Quality for Erect Panicle (Ep) Type High Yield *Japonica* Super Rice in Northeast China

Sibo Chen¹, Shuangjie Chen¹, Yihui Jiang¹, Qing Lu¹, Zhongyuan Liu¹, Wanying Liu¹, Xuhong Wang¹, Wenhua Shi¹, Quan Xu¹, Jian Sun¹, Fan Zhang² and Liang Tang^{1*}

Correction to: Rice (2022) 15:15.

<https://doi.org/10.1186/s12284-022-00561-9>

Unfortunately, in the original publication of the article, the Figs. 1, 2, 3 and 4 and Fig. S1 (Additional file 3) were

published without part labels. The corrected figures are given in this Correction article. The original article has been corrected.

The original article can be found online at <https://doi.org/10.1186/s12284-022-00561-9>.

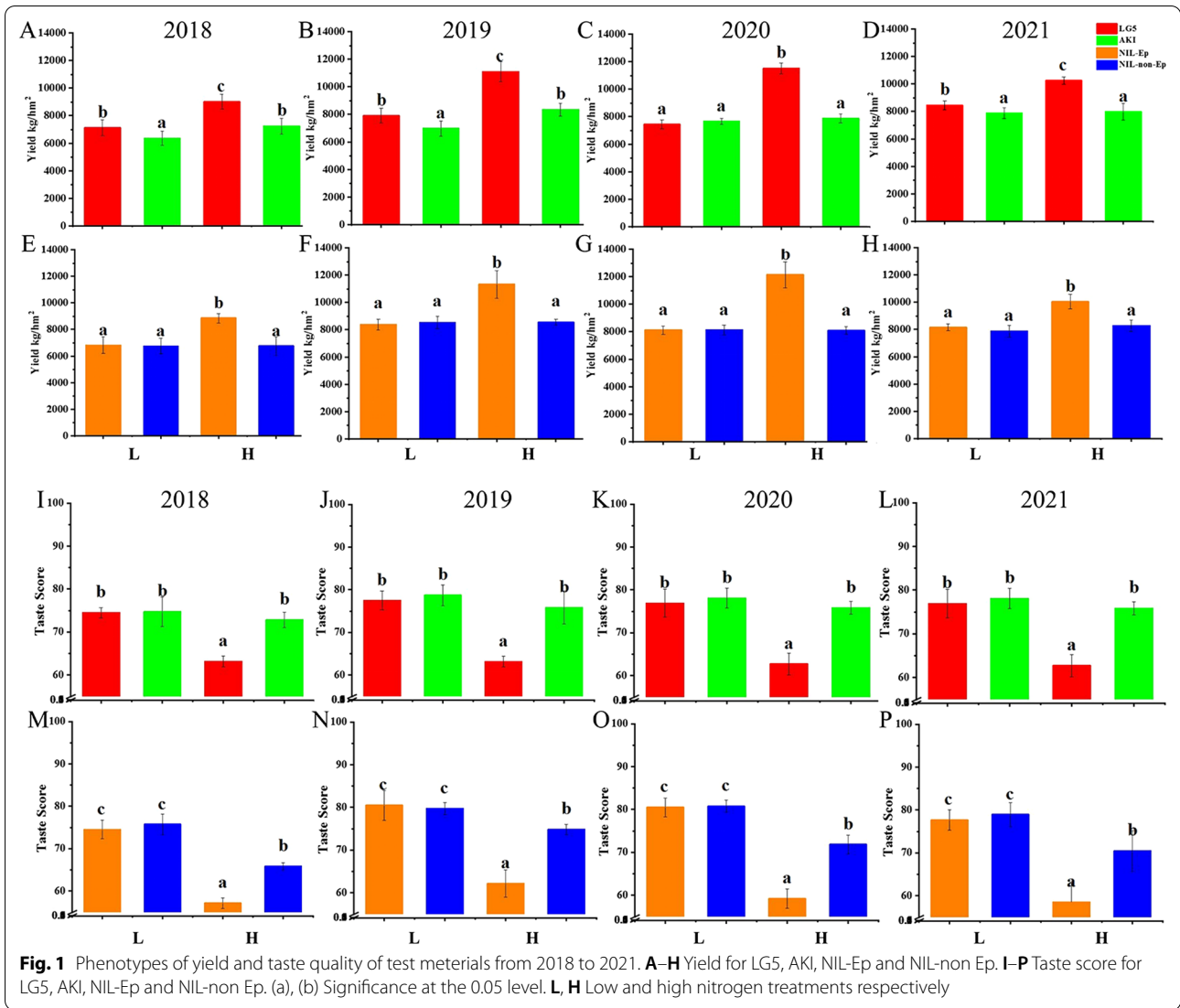
*Correspondence: tangliang@syau.edu.cn

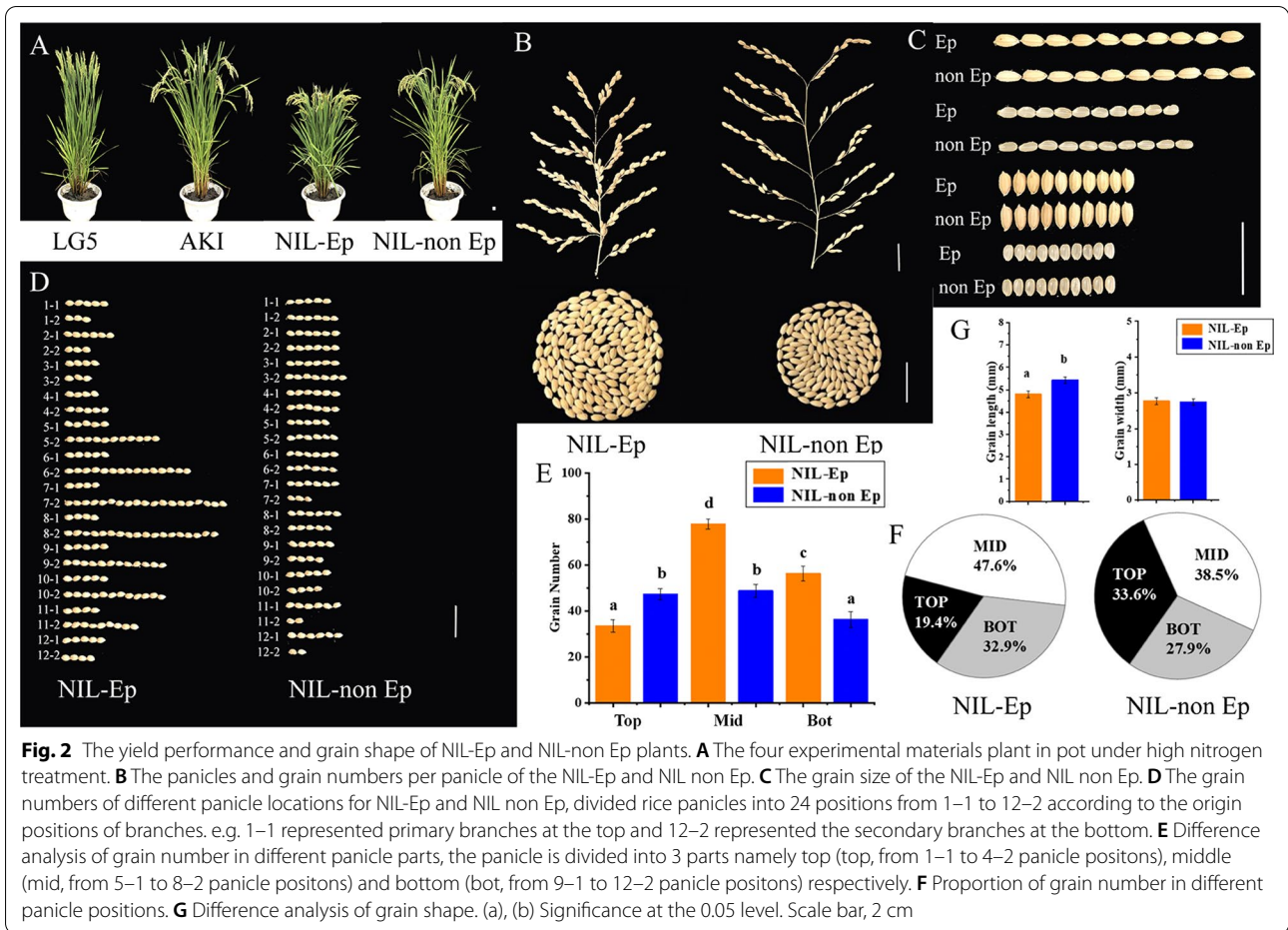
¹ Rice Research Institute, Shenyang Agricultural University/Key Laboratory of Northern Japonica Super Rice Breeding, Ministry of Education, Shenyang 110866, China

Full list of author information is available at the end of the article



© The Author(s) 2022. **Open Access** This article is licensed under a Creative Commons Attribution 4.0 International License, which permits use, sharing, adaptation, distribution and reproduction in any medium or format, as long as you give appropriate credit to the original author(s) and the source, provide a link to the Creative Commons licence, and indicate if changes were made. The images or other third party material in this article are included in the article's Creative Commons licence, unless indicated otherwise in a credit line to the material. If material is not included in the article's Creative Commons licence and your intended use is not permitted by statutory regulation or exceeds the permitted use, you will need to obtain permission directly from the copyright holder. To view a copy of this licence, visit <http://creativecommons.org/licenses/by/4.0/>.





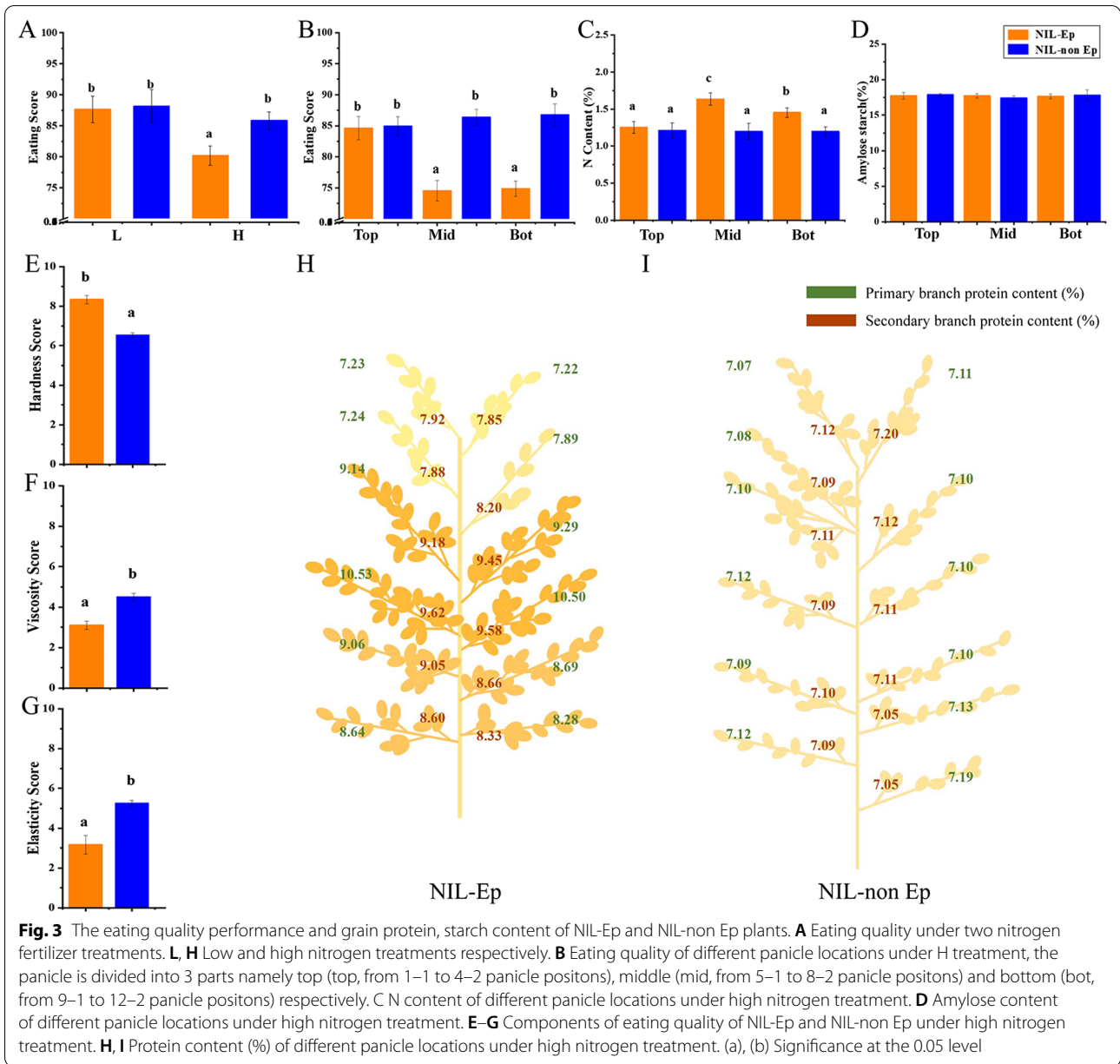
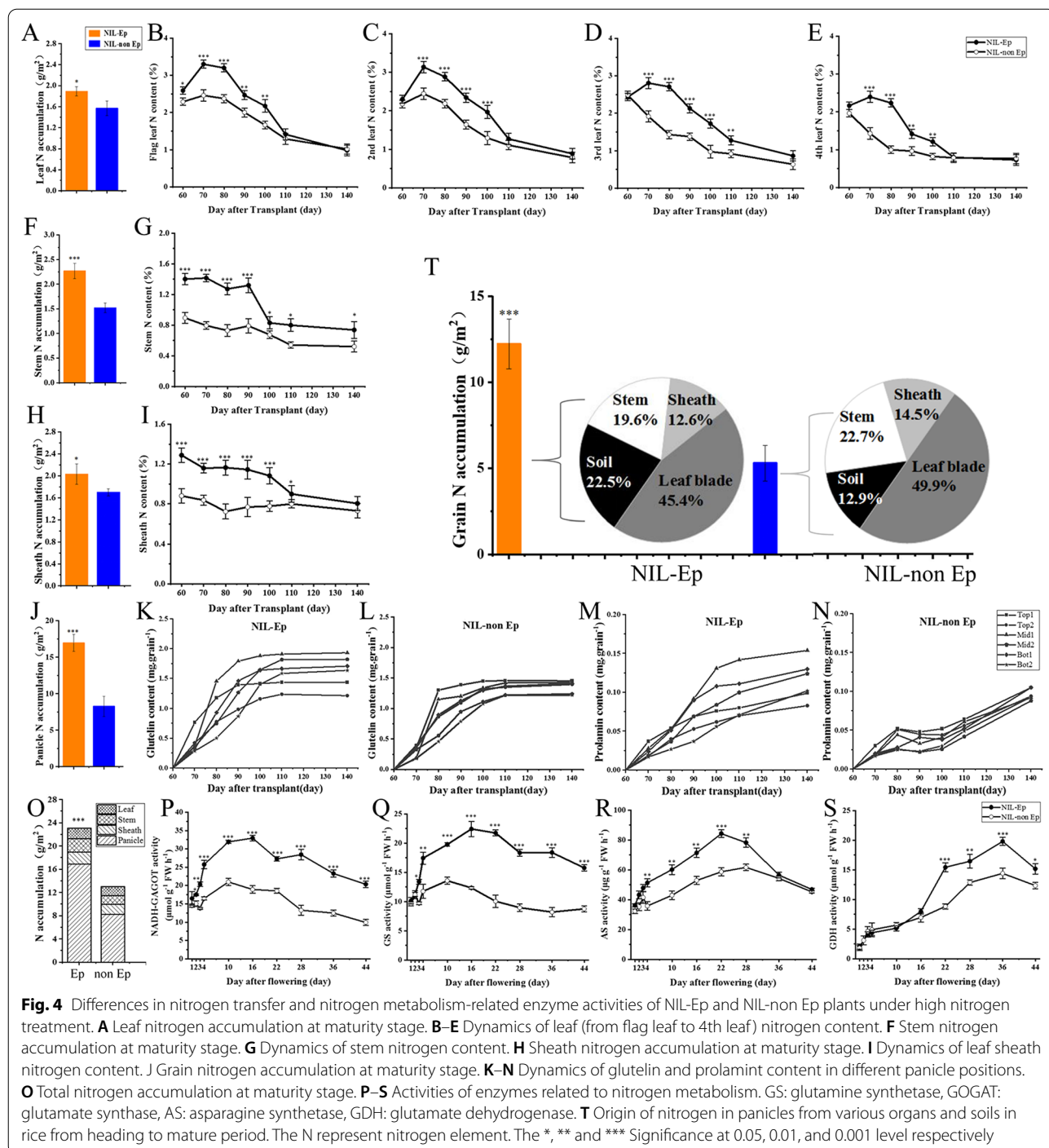


Fig. 3 The eating quality performance and grain protein, starch content of NIL-Ep and NIL-non Ep plants. **A** Eating quality under two nitrogen fertilizer treatments. **L, H** Low and high nitrogen treatments respectively. **B** Eating quality of different panicle locations under H treatment, the panicle is divided into 3 parts namely top (top, from 1–1 to 4–2 panicle positions), middle (mid, from 5–1 to 8–2 panicle positions) and bottom (bot, from 9–1 to 12–2 panicle positions) respectively. **C** N content of different panicle locations under high nitrogen treatment. **D** Amylose content of different panicle locations under high nitrogen treatment. **E–G** Components of eating quality of NIL-Ep and NIL-non Ep under high nitrogen treatment. **H, I** Protein content (%) of different panicle locations under high nitrogen treatment. (a), (b) Significance at the 0.05 level



Supplementary Information

The online version contains supplementary material available at <https://doi.org/10.1186/s12284-022-00565-5>.

Additional file 3: Figure S1. The schematic diagram of comparison between current panicle type and breeding target panicle type.

Author details

¹Rice Research Institute, Shenyang Agricultural University/Key Laboratory of Northern Japonica Super Rice Breeding, Ministry of Education, Shenyang 110866, China. ²Institute of Crop Sciences/National Key Facility for Crop Gene Resources and Genetic Improvement, Chinese Academy of Agricultural Sciences, 12 South Zhong-Guan-Cun Street, Haidian District, Beijing 100081, China.

Published: 30 March 2022

Publisher's Note

Springer Nature remains neutral with regard to jurisdictional claims in published maps and institutional affiliations.