

RESEARCH

Open Access

Bioactivity of miltefosine against aquatic stages of *Schistosoma mansoni*, *Schistosoma haematobium* and their snail hosts, supported by scanning electron microscopy

Maha M Eissa^{1*}, Samia El Bardicy² and Menerva Tadros²

Abstract

Background: Miltefosine, which is the first oral drug licensed for the treatment of leishmaniasis, was recently reported to be a promising lead compound for the synthesis of novel antischistosomal derivatives with potent activity *in vivo* against different developmental stages of *Schistosoma mansoni*. In this paper an *in vitro* study was carried out to investigate whether it has a biocidal activity against the aquatic stages of *Schistosoma mansoni* and its snail intermediate host, *Biomphalaria alexandrina*, thus being also a molluscicide. Additionally, to see whether miltefosine can have a broad spectrum antischistosomal activity, a similar *in vitro* study was carried out on the adult stage of *Schistosoma haematobium*, the second major human species, its larval stages and snail intermediate host, *Bulinus truncatus*. This was checked by scanning electron microscopy.

Results: Miltefosine proved to have *in vitro* ovicidal, schistolarvicidal and lethal activity on adult worms of both *Schistosoma* species and has considerable molluscicidal activity on their snail hosts. Scanning electron microscopy revealed several morphological changes on the different stages of the parasite and on the soft body of the snail, which further strengthens the current evidence of miltefosine's activity. This is the first report of molluscicidal activity of miltefosine and its *in vitro* schistosomicidal activity against *S. haematobium*.

Conclusions: This study highlights miltefosine not only as a potential promising lead compound for the synthesis of novel broad spectrum schistosomicidal derivatives, but also for molluscicides.

Background

Miltefosine (hexadecylphosphocholine) is one of several alkylphospholipid derivatives collectively known as alkylphosphocholines that were originally developed as anticancer agents [1]. The biocidal action of miltefosine against *Leishmania* species was demonstrated in the mid 1980s [2,3] and since then, trials for its clinical evaluation have led to the licensing of miltefosine for the oral treatment of leishmaniasis in India, Colombia, and Germany [4-6]. Miltefosine is also active against a variety of protozoa, and more and more data have become available on its activity against other Kinetoplastidae (*Trypanosoma cruzi* and *T. brucei*) [7,8], *Trichomonas*

vaginalis [9], *Entamoeba histolytica* [10] and several free living amoebas [11-13]. Apart from its antiprotozoal effect, various bioactivities of miltefosine have been reported; it has a broad spectrum antifungal activity [14], bactericidal activity against *Streptococcus pneumoniae* and other pathogenic *Streptococci* [15], and it is under investigation as a potential therapy against HIV infection [16]. The mechanism underlying broad range bioactivities and the target (s) is still unrevealed. Most recently, miltefosine was reported to have anthelmintic properties. In a study done in 2011 [17], miltefosine was found to have schistosomicidal activity and showed comparative advantage over PZQ in being effective against *in vivo* differential developmental stages of *Schistosoma mansoni* in the mouse model.

Schistosomiasis is one of the most prevalent diseases in the world, with about 200 million human beings

* Correspondence: mahaieissa19@yahoo.com

¹Department of Medical Parasitology, Faculty of Medicine, Alexandria University, Alexandria, Egypt

Full list of author information is available at the end of the article

infected in 74 countries. It is estimated that 20 million of them have serious forms of the disease or related disabilities, and that 200,000 people die from the disease every year [18]. Chemotherapeutic measures have been the mainstay in the control of this disease [19]. Since 1970, praziquantel (PZQ) has become the drug of choice against the three major human species of schistosomes, *Schistosoma mansoni* (Sambon), *Schistosoma haematobium* (Bilharz), and *Schistosoma japonicum* (Katsurada) [20,21]. It is a relatively safe, orally administered drug that leads to reduction of the prevalence of schistosomiasis [22]. Consequently a targeted as well as mass drug administration program presently relies heavily on this drug for the control of schistosome-induced morbidity.

With only one drug of choice for treatment and the possibility of development of parasite resistance [23-27], the present situation is dangerous. Therefore, there is a real need for discovery of a new drug.

Though chemotherapy is one of the most effective methods for the control of schistosomiasis [28], there is a basic need for more selective and efficient molluscicides for the control of the snail vectors. The control of snails is an important means in the combat against this disease. The presently available synthetic molluscicides tend to be generally biocidal affecting many other animals and/or plants in the snail habitat [29]. Therefore, there is a need to search for other molluscicides with strong but specific activity and less harmful to the environment. As miltefosine, was reported to be a promising lead compound for the synthesis of novel anti-schistosomal derivatives with potent activity against *in vivo* different developmental stages of *S. mansoni* [17], this study was carried out to investigate whether a similar activity can also exist against its aquatic stages and its snail intermediate host, *Biomphalaria alexandrina*, thus being a molluscicide. In addition, to elucidate whether miltefosine can have a broad spectrum antischistosomal activity, a similar *in vitro* study was carried out on the same stages, the intermediate host, and the adult worm of *Schistosoma haematobium* the second major human species. Miltefosine efficacy was evaluated on basis of *in vitro* bioactivity testing supported by scanning electron microscopy.

Materials and methods

Drug

Miltefosine (Milteforan[®]) 2% veterinary oral solution was kindly supplied by Dr. Paolo Bianciardi, Scientific Advisor, Virbac, Italy.

Bioactivity testing

In vitro schistosomicidal bioassay

The schistosomicidal *in vitro* bioassay used here followed the main procedure previously described by [30]

and [31]. Thus, the schistosome material *Schistosoma mansoni* (Sambon) and *S. haematobium* (Bilharz) was obtained from the Schistosome Biological Supply Centre (SBSC), Theodor Bilharz Research Institute (TBRI), Cairo, Egypt. Mature worms were obtained from hamsters (*Mesocricetus auratus*), percutaneously infected with 350-400 *S. mansoni* cercariae per hamster 6-7 weeks earlier, and with *S. haematobium* cercariae 11-12 weeks earlier. The worms were obtained by perfusion using citrated saline, and the recovered worms were washed from blood in small sieves (20 μ m mesh) by phosphate buffer. Worms were washed three times with the culture medium which is used for the assay under a sterilized laminar flow chamber. The culture medium used was RPMI 1640 + l-glutamine + 20% fetal calf serum + antibiotics (300 μ g streptomycin + 300 IU penicillin + 160 μ g gentamycin per ml). The bioassay was carried out using 24 wells tissue culture plates. A stock solution 5 mg/ml of the compound was prepared in DMSO immediately before being used. Three pairs of worms, males and females equally were used for each test well in 2 ml medium and 2 replicats were set up for each species in each case. Exposure of worms to a standard concentration of 10 μ g/ml of miltefosine (25 μ M) was made for 5 days at 37°C \pm 0.5°C in 5% CO₂ incubator. A pure medium and a medium containing 0.5% of DMSO (vehicle) were used as negative controls, while praziquantel at 10 μ g/ml was used as a reference drug. Worms were examined for their viability using a stereomicroscope, and those not showing motility for one minute were considered dead. The mortality rate of worms was calculated after 5 days exposure. The compound was then retested (secondary screen) using the same technique by successive descending dilutions of the solution. The mortality of worms was determined in each case and the LC₅₀ and LC₉₀ were calculated. The statistical program SPSS version 7.5 was used for the calculation.

Larvicidal (ovicidal, miracidicidal and cercaricidal) activity

Eggs, miracidia and cercariae of *S. mansoni* and *S. haematobium* were also obtained from SBSC. The eggs were extracted from the intestines of infected hamsters (*Mesocricetus auratus*). Miracidia were obtained from cleaned eggs by hatching them in small amounts of dechlorinated tap water. The cercariae were procured from experimentally infected *B. alexandrina* and *B. truncatus* snails at 25°C \pm 2°C. The eggs, miracidia and cercariae of both *Schistosoma spp.* were exposed to the LC₅₀ of miltefosine determined below on snails for 30 min., 25 min and 20 min respectively. Sinking down of the miracidia and cercariae with detachment of the tail in the later case give indication of death of these organisms.

Molluscicidal tests

The snail material used were *Biomphalaria alexandrina* (Ehrenberg) and *Bulinus truncatus* (Audouin), the vectors of *S. mansoni* and *S. haematobium* in Egypt respectively. They were also obtained from the colonies maintained in SBSC. Adult *B. alexandrina* and *B. truncatus* snails 4-6 mm in diameter and 2-3 mm shell height respectively were used for testing the molluscicidal activity of miltefosine. The snails were fed on boiled lettuce leaves, blue green algae and fish food.

The efficacy of miltefosine against the adult snails was primarily determined using the standard method of World Health Organization recommendations [29]. Thus one liter of solution with a concentration 20 ppm was prepared and 10 snails were added. The snails were maintained in the solution for 24 h at 25°C + 2°C. After exposure, the snails were thoroughly washed and transferred to fresh water for another 24 h for recovery. Two replicas were carried out and two groups of snails were run in fresh dechlorinated water under the same experimental conditions as the negative control. The currently conventional molluscicide (Niclosamide) was used similarly as positive control. At the end of recovery period, the snails were examined for viability, and the dead snails were counted and recorded to calculate the mortality rate. Miltefosine was then retested by the same method using descending concentrations for LC₅₀ and LC₉₀ determination. The statistical program SPSS package version 7.5 was used for calculation.

Scanning electron microscopy study

Eggs, miracidia, cercariae as well as adult worms of *Schistosoma mansoni*, and the soft body of its snail host, *B. alexandrina*, exposed to miltefosine, and non exposed samples that served as controls were fixed in a 10% glutaraldehyde and processed for examination by SEM [32].

Ethical approval

All animal studies presented here have been approved by the local government based on national regulations for animal experimentation.

Results & discussion

In vitro schistosomicidal activity

Miltefosine showed 100% mortality of worms at 10 µg/ml after 5 days exposure. It was slightly more effective on adult worms of *S. haematobium* than on *S. mansoni* with LC₅₀ of 5.1 µg/ml and 5.8 µg/ml for the two spp. respectively. However this effect is still much less than that of the reference drug (PZQ) which gave LC₅₀ = 0.2 µg/ml after 5 days under the same condition (Table 1). This difference in susceptibility of the two species to miltefosine may be explained by one of the several hypotheses raised by Eissa *et al.*, 2011 [17] for the possible mechanisms of action of miltefosine in schistosomiasis. They postulated

Table 1 *In vitro* schistosomicidal activity of miltefosine on *Schistosoma mansoni* and *Schistosoma haematobium* adult worms (after 5 days exposure).

<i>Schistosoma</i> spp.	Miltefosine		Praziquantel	
	LC ₅₀ µg/ml	LC ₉₀ µg/ml	LC ₅₀ µg/ml	LC ₉₀ µg/ml
<i>S. mansoni</i>	5.8	8.2	0.2	0.3
<i>S. haematobium</i>	5.1	7.1	0.2	0.3

that miltefosine may act through acetylcholine esterase inhibition due to the presence of phosphocholine moiety in its structure, a mechanism of action which is well known for the potent schistosomicidal drug, metrifonate, which was widely used against *S. haematobium* in the 1990s, and then withdrawn from the market because of medical, operational and economic criteria [33,34]. It is well known that *S. mansoni* and *S. haematobium* differ in their sensitivity to this therapeutic anticholinesterase, metrifonate, that exhibits activity against *S. haematobium* singly [35,36]. As Miltefosine was postulated to have anticholine esterase activity, we hypothesize that this may act synergistically with other postulated mechanisms raised for miltefosine by Eissa *et al.*, 2011 [17], thus explaining the slight difference of susceptibility of the two species to miltefosine. However, further research is needed to provide a better understanding of the contribution of this factor in determining the different susceptibility of the two spp. to miltefosine.

In the present study, SEM of adult male *S. mansoni* worm exposed *in vitro* to miltefosine at a concentration of 10 µg/ml (25 µM) showed distortion of the tubercles on the dorsal tegumental surface (Figure 1A). There was erosion of the tegumental surface (Figure 1B, C) with appearance of subtegumental tissue (Figure 1D). There was also constriction at the posterior end of the worm (Figure 1E). The normal dorsal tegumental tubercles from the negative controls (pure medium controls) are shown in (Figure 1F). SEM of worms from DMSO controls appeared similar to those from pure medium controls. SEM of the tegument of adult *S. mansoni* worms has been described since the seventies [37,38]. The present results show that miltefosine caused disintegration of the tubercles on the dorsal tegumental surface with its sloughing and erosion leading to exposure of the subtegumental tissue. These findings are similar but more pronounced than the changes observed by Eissa *et al.*, 2011 [17] in their *in vivo* study. These results are also in accordance with tegumental alteration induced by mefloquine on adult *S. mansoni* in both *in vitro* and *in vivo* studies [39].

Ovicidal, miracidicidal and cercaricidal activities

Miltefosine proved to have clear schistolarvicidal effect on *S. mansoni* and *S. haematobium*. Thus eggs did not

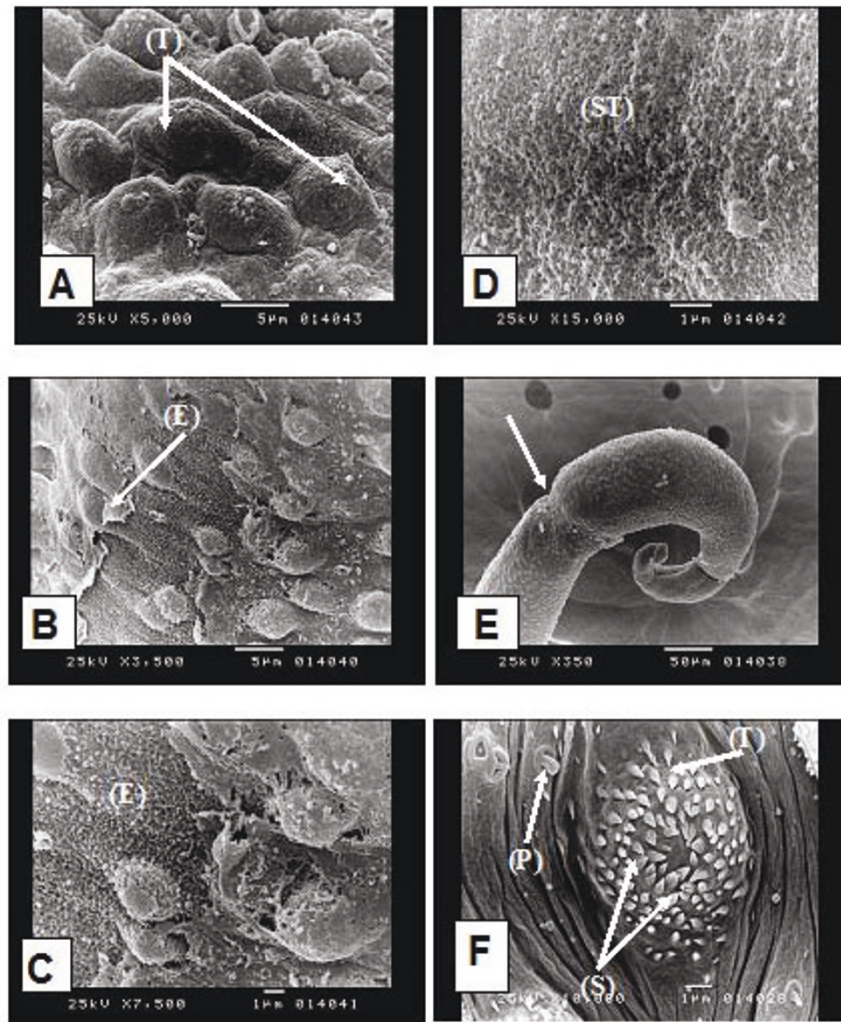


Figure 1 Scanning electron microscopy (SEM) of adult *Schistosoma mansoni*: in vitro exposed adult to miltefosine showing: (A) distorted dorsal tegumental tubercles on the dorsal surface (T) ($\times 5000$), (B) erosion of the tegumental surface (E) ($\times 3500$), (C) higher magnification of (B) ($\times 7500$), (D) appearance of subtegumental tissue (ST) ($\times 15000$), (E) constriction at the posterior end of the worm (\rightarrow) ($\times 350$). Unexposed adult showing: (F) dorsal tegumental tubercle (T) of a normal male worm showing its spines (S) and papillae (P) ($\times 10000$).

hatch at a concentration equal to LC_{50} of the drug on the corresponding snail vector (Table 2). However, the drug was more effective on *S. haematobium* than on *S. mansoni*. The compound leads to reduction in the movement of the miracidia and the sinking down of the cercariae to the bottom of the container with detachment of the tails. This was followed by the death of both organisms. Thus, this study showed also that miltefosine not only possesses the potential of being broad spectrum antischistosomal compound but also has schistolarvicidal activity against aquatic stages of both *S. mansoni* and *S. haematobium*. The biocidal activity of miltefosine was demonstrated against *S. mansoni* and *S. haematobium* eggs, leading to prevention of hatching when eggs were exposed to the molluscicidal LC_{50} , half

and quarter this compound concentration. SEM study of *S. mansoni* egg showed that normal egg has microspicules like chitinous minute projections densely distributed all over the surface (Figure 2A& B). On the other hand, eggs exposed to miltefosine at a concentration of 3.75 ppm showed patchy loss of these projections (Figure 2C, D). The remaining ones became oedematous and swollen (Figure 2E). Previous literature showed that the egg shell of *S. mansoni* consists of dense material with multiple microspicules on its outer surface and pores through its thickness [40]. Within the shell is the live miracidium, which releases enzymes and antigens [41]. The present SEM of *S. mansoni* eggs after exposure to miltefosine showed destruction and patchy loss of the microspicules of the egg shell, which may

Table 2 Ovicidal and schistolarvicidal activity of miltefosine on *Schistosoma mansoni* and *Schistosoma haematobium*

<i>Schistosoma</i> spp.	Concentration of Miltefosine Solution ($\mu\text{g}/\text{m l}$) Molluscidal LC ₅₀	Ovicidal Effect	Miracidicidal Effect	Cercaricidal Effect
		100% mortality after (minutes)	100% mortality after (minutes)	100% mortality after (minutes)
<i>S. mansoni</i>	7.5	5	10	20
	3.75 (1/2)	10	15	30
	1.85 (1/4)	20	20	40
	0.925 (1/8)	30	30	50
<i>S. haematobium</i>	2.6	10	20	30
	1.3 (1/2)	20	30	45
	0.65 (1/4)	0	40	55
	0.33 (1/8)	0	60	60

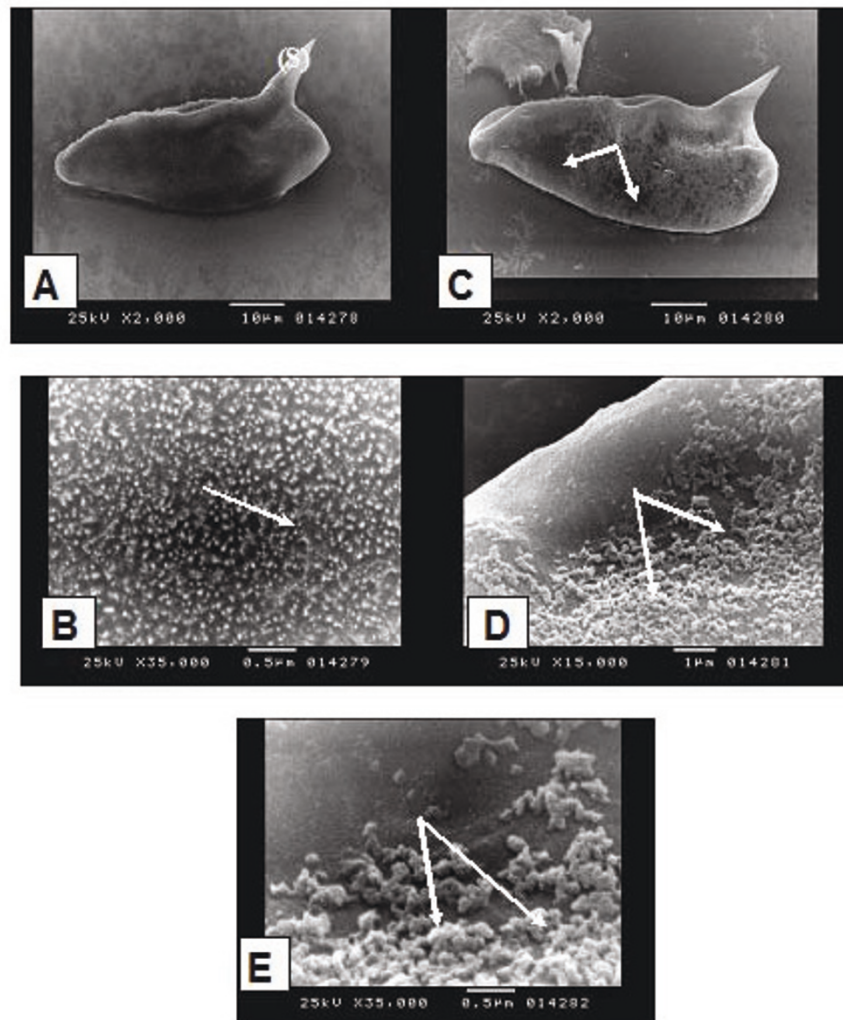


Figure 2 Scanning electron microscopy (SEM) of *Schistosoma mansoni* eggs: unexposed eggs showing: (A) oval egg with lateral spine (S) ($\times 2000$), (B) the surface of the egg showed microspicules like chitinous projections (\rightarrow) ($\times 35000$). Exposed eggs to miltefosine showing: (C) patchy loss of the microspicules like chitinous projections (\rightarrow) ($\times 2000$), (D) higher magnification of (C) ($\times 15000$), (E) swollen and oedematous chitinous projections (\rightarrow) ($\times 35000$).

indicates that miltefosine can diffuse easily and find its way inside the eggs. This, in addition to the porous shell of the egg that allows the drug to reach the metabolically active miracidium, where it may interfere with its antigenic substances and enzymes leading to the loss of their capability of hatching. Hatching of *Schistosoma* eggs is the culmination of multiple biological processes and severe damage to several of these processes may be needed to be manifest as a decrease in the release of miracidia [40]. Further documenting this hypothesis is the observation of small granuloma size in the liver of experimentally infected mice with *S. mansoni* after treatment with miltefosine [17], that was explained by the authors due to the effect on eggs *in situ* by miltefosine which is known to accumulate in the liver after oral administration, thus diminishing the capacity of the eggs to induce delayed type hypersensitivity granulomas in the liver. Impairment of the antigenic products is clearly important to the host as morbid complications of schistosomiasis are largely related to the granulomatous and fibrotic responses to egg deposition in the tissues [42].

The present study showed also that miltefosine has biocidal activity against miracidia and cercariae of both *Schistosoma* species. Miltefosine leads to the reduction in movement of miracidia and sinking of the cercariae to the bottom of the container, this was followed by the death of both organisms. SEM studies showed that the normal unexposed miracidium of *S. mansoni* is covered with cilia (Figure 3A, B). The apical papillae showed the characteristic honey comb pattern of its terebratorium (Figure 3C). where as, the miracidium exposed to miltefosine at a concentration of 3.75 ppm showed distinct loss of cilia from its surface (Figure 3D) and the protruded apical papillae showed swollen oedematous corrugated areas (Figure 3E, F).

An SEM study of miracidia has been previously carried out by [43] and [44]. SEM of *S. mansoni* miracidium exposed to miltefosine showed loss of cilia from its surface, and the protruded apical papilla showed swollen oedematous corrugated areas. As a result the miracidium loses its ability to swim in water searching for its snail host. It may also lose its capability to penetrate the snails, because of the changes in the apical papilla [43].

In the present study, SEM of unexposed cercariae showed that the cercarial glycocalyx envelops the whole organism (Figure 4A). The most anterior part of the head is provided with spiny tegumental folds (Figure 4B). At the body region the surface was irregular showing invagination and infolding of the tegument forming frequent tubular profiles (Figure 4B). The body is covered with numerous spines which are posteriorly directed and are covered with a glycocalyx that obscured these spines (Figure 4C). The cercarial tail and its furculae are covered by the glycocalyx similar to that seen on

the body but the tips of the spines were often visible, larger and sharper than those of the body (Figure 4D). Cercariae exposed to miltefosine at a concentration of 3.75 ppm showed partial detachment of the body from the tail (Figure 4E), whereas in other cercariae, the body appeared completely separated from the tail (Figure 4F). There was marked loss of the glycocalyx, and thinning of the tegument leading to external protrusion or surface blebbing (Figure 4E, G, inset), with focal loss of spines from the tegument (Figure 4H). SEM of *S. mansoni* cercariae has been described in a number of studies [45,46]. In the present study, *S. mansoni* cercariae exposed to miltefosine at concentration 3.75 ppm showed different morphological changes. Gross changes were observed, including loss of tails in about 80% of cercariae. These observations were consistent with the report of [47] and [48] which showed that hinokitiol (β -thujaplicin), a compound for potential skin application against cercarial penetration leads to loss of cercarial tail in about 50% of cercariae thus affecting cercarial movement and swimming activity. SEM also revealed loss of glycocalyx resulting in the thinning of the tegument causing external protrusion or surface blebbing with focal loss of spines. These changes are similar to the changes observed on the cercariae of *S. mansoni* exposed to hinokitiol by [48]. Those authors suggested that the structural changes may account for the inability of hinokitiol-treated cercariae to infect the host. Moreover, the surface blebbing is considered as an indicator for stress and has been observed in previous SEM studies evaluating anti-schistosomal drugs [49,39].

Molluscicidal activity

The results of this study showed that miltefosine has a considerable molluscicidal effect on both *B. alexandrina* and *B. truncatus* snails. *B. truncatus* is considerably more susceptible than *B. alexandrina*, LC_{50} for *Bulinus* was 2.6 ppm vs. 7.5 ppm for *Biomphalaria* after 24 h at 26°C. This molluscicidal effect is still much lower than that of niclosamide which is the conventional synthetic molluscicide commonly used at present, LC_{50} of niclosamide is 0.2 ppm under the same condition (Table 3). SEM of the unexposed soft body of *B. alexandrina* snail showed that the ventral surface of the foot is covered with cilia (Figure 5A, B) whereas, the tegumental surface of the mantle covering the visceral mass is almost smooth (Figure 5C). *B. alexandrina* snails exposed to miltefosine at concentration of 5 ppm showed extensive damage of the cilia at the foot (Figure 5D). There was also extensive damage of the tentacles with erosion and exfoliation especially at its apical part with appearance of the subtegumental tissue (Figure 5E). The mantle showed erosion, peeling and exfoliation of its tegumental surface that resulted in the exposure of the

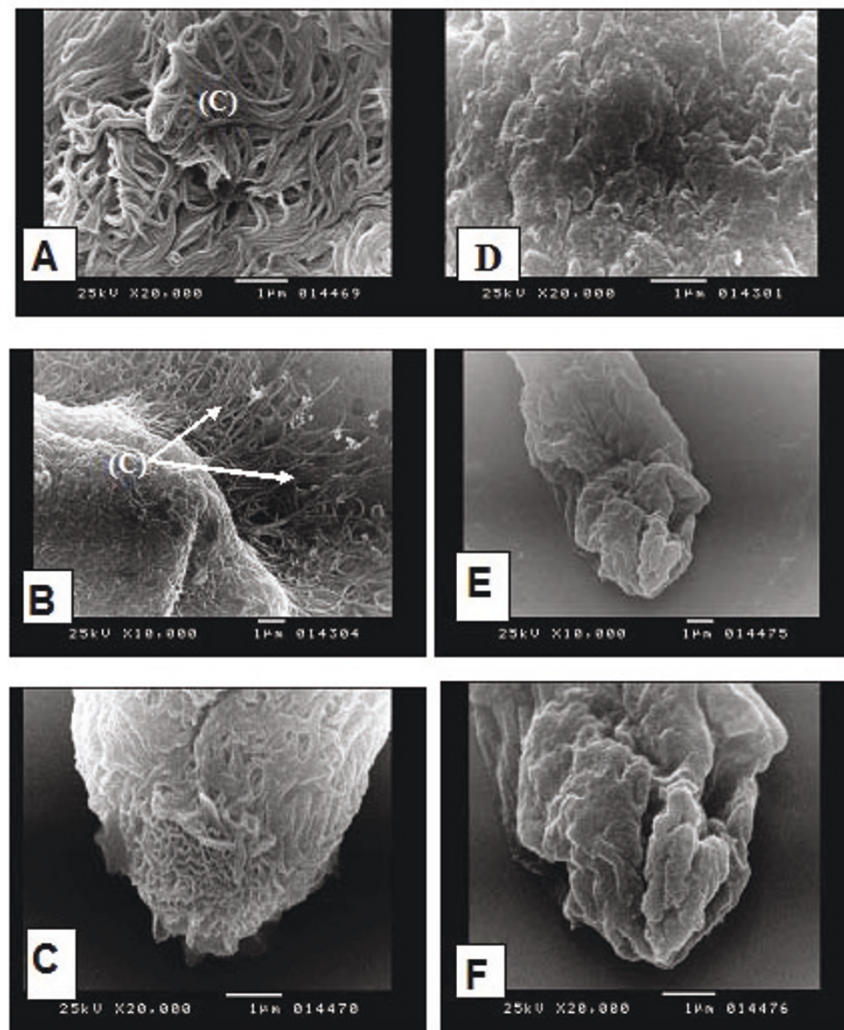


Figure 3 Scanning electron microscopy (SEM) of *S. mansoni* miracidia, unexposed miracidia showing: (A) cilia (C) covering the surface of the miracidium (→) (× 20000), (B) cilia (C) covering the miracidium (→) and extending from its lateral side (× 10000), (C) the apical papillae of the miracidium with its characteristic honey comb pattern of its terebratoria (→) (× 20000). Miracidium exposed to miltefosine showing: (D) loss of cilia from the surface of miracidium (× 20000), (E) protruded apical papillae with swollen oedematous corrugated areas (× 10000), (F) higher magnification of (E) (× 20000).

subtegumental tissue (Figure 5F). These changes are reminiscent of the morphological changes observed in scanning electron microscopy of tumor cells treated with miltefosine [50] and in adult *Schistosoma mansoni* after experimental *in vivo* treatment with miltefosine [17].

A review of the literature showed that a number of studies have been carried out on the effect of several compounds and plant extracts on miracidia and cercariae as well as medically important snails with various degrees of success [51-54].

Although, the results of this study demonstrated the molluscicidal activity of miltefosine, its broad biocide activity may make it unsuitable for snail control.

Therefore, this study draws attention to miltefosine as a promising lead compound for the synthesis of more potent and selective molluscicidal derivatives.

Conclusions

This study showed that miltefosine has a schistolarvicidal activity on the different aquatic stages of *S. mansoni* and *S. haematobium*, and a lethal *in vitro* effect on adult worm of both species. In addition, considerable molluscicidal activity was also demonstrated against their snail hosts. These biocidal activities were supported by SEM studies which further strengthen current evidence of miltefosine's activity. To the best of our knowledge, this is the first report of molluscicidal activity of miltefosine

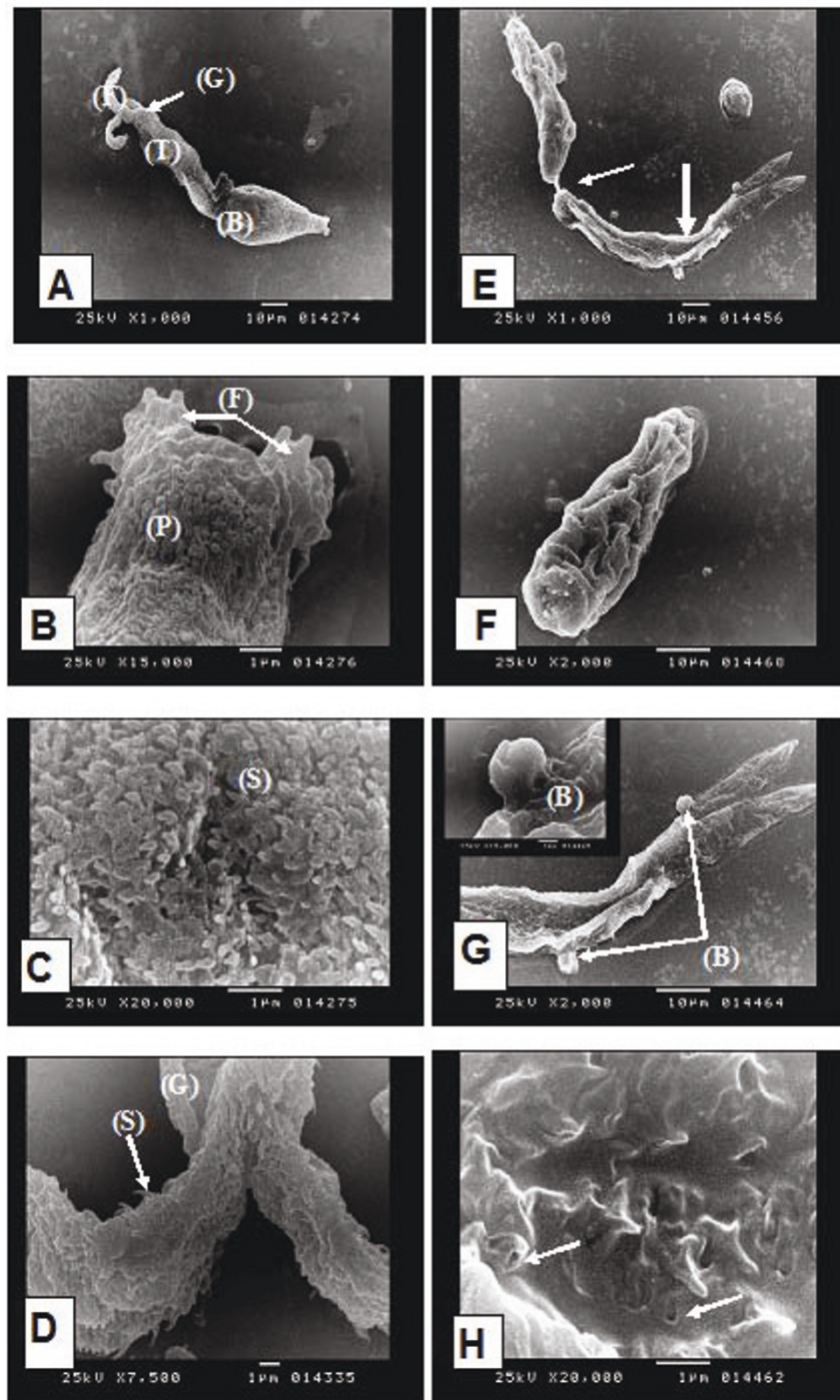


Figure 4 Scanning electron microscopy (SEM) of *Schistosoma mansoni* cercariae: normal cercaria showing: **(A)** cercarial body (B) and tail (T) with its two furculae (F), covered with glycocalyx (G) (× 1000), **(B)** tegumental folds (F) at the most anterior part of the head and evident tubular profiles (P) (× 15000), **(C)** numerous spines (S) covering the body region which are directed posteriorly and are covered with a glycocalyx that obscured these spines (× 20000), **(D)** the cercarial tail with its two furculae covered with glycocalyx (G) identical to that seen on the body but the tips of the spines (S) were often visible, larger and sharper than those of the body (× 7500). Cercaria exposed to miltefosine showing: **(E)** partial detachment of the body from the tail (→) with marked loss of the glycocalyx, thinning of the tegument (→) and surface blebbing (× 1000), **(F)** separated cercarial body (× 2000), **(G)** surface blebbing of the tegument (B) (× 2000, inset × 15000). **(H)** focal loss of tegumental spines (→) (× 20000).

Table 3 Molluscicidal activity of miltefosine on *Biomphalaria alexandrina* and *Bulinus truncatus* snails after 24 hours at 25°C + 2°C

Snail species	Miltefosine		Niclosamide	
	LC ₅₀ (ppm)	LC ₉₀ (ppm)	LC ₅₀ (ppm)	LC ₉₀ (ppm)
<i>B. alexandrina</i>	7.5	9.9	0.2	0.6
<i>B. truncatus</i>	2.6	4.2	0.2	0.6

and its *in vitro* schistosomicidal activity against *S. haematobium*. Thus, this study highlights miltefosine not only as a potential promising lead compound for the synthesis of novel broad spectrum schistosomicidal derivatives but also for molluscicidals.

Acknowledgements

We are grateful to Dr. Paolo Bianciardi, Scientific Advisor, Virbac, Italy, for providing miltefosine used in this study.

Author details

¹Department of Medical Parasitology, Faculty of Medicine, Alexandria University, Alexandria, Egypt. ²Department of Medical Malacology, Theodor Bilharz Research Institute, Imbaba, Cairo, Egypt.

Authors' contributions

MME: conceived and designed the research, performed the experiment and SEM study, literature search, wrote and revised the manuscript. SEB: designed the research, performed the experiment and SEM study, literature search, wrote and revised the manuscript. MT: performed the experiment, wrote and revised the manuscript. All authors approved the final version of the manuscript.

Competing interests

The authors declare that they have no competing interests.

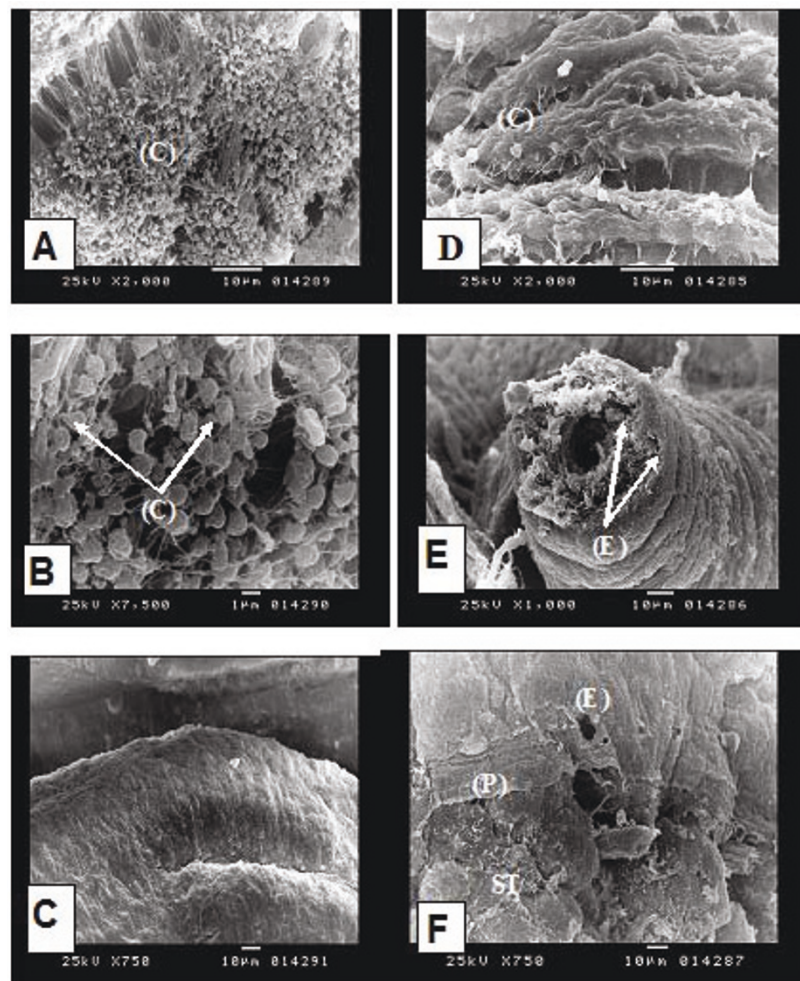


Figure 5 Scanning electron microscopy (SEM) of *Biomphalaria alexandrina* snail (soft part): normal snail showing: (A) densely attached numerous cilia (C) at the ventral surface of the foot region (x 2000), (B) higher magnification of (A) showing cilia (C) (x 7500), (C) smooth tegumental surface of the mantle/visceral mass (x 750). Snail exposed to miltefosine showing: (D) extensive damage of the cilia at the foot region (C) (x 2000), (E) extensive damage of the tentacles with erosion (E) and exfoliation especially at its apical part with appearance of the subtegumental tissue (x 1000), (F) the mantle showed erosion (E), peeling (P) and exfoliation of its tegumental surface that results in exposure of the subtegumental tissue (ST) (x 750).

Received: 28 March 2011 Accepted: 11 May 2011
Published: 11 May 2011

References

- Brachwitz H, Vollgraf C: Analogs of alkyllysophospholipids: chemistry. Effects on the molecular level and their consequences for normal and malignant cells. *Pharmacol Ther* 1995, **66**:39-82.
- Berman JD: Development of miltefosine for the leishmaniasis. *Mini Rev Med Chem* 2006, **6**:145-151.
- Croft SL, Engel J: Miltefosine-discovery of the antileishmanial activity of phospholipid derivatives. *Trans R Soc Trop Med Hyg* 2006, **100**:S4-S8.
- Perez-Victoria FJ, Sanchez-Canete MP, Seifert K, Croft SL, Sundarr S, Castanys S, Gamarro F: Mechanisms of experimental resistance of *Leishmania* to miltefosine: implications for clinical use. *Drug Resist Updates* 2006, **9**:26-39.
- Sindermann H, Engel J: Development of miltefosine as an oral treatment for leishmaniasis. *Trans R Soc Trop Med Hyg* 2006, **100**(Suppl 1):S17-S20.
- Soto J, Berman J: Treatment of New World cutaneous leishmaniasis with miltefosine. *Trans R Soc Trop Med Hyg* 2006, **100**:S34-S40.
- Croft SL, Snowden D, Yardley V: The activities of four anticancer alkyllysophospholipids against *Leishmania donovani*, *Trypanosoma cruzi* and *Trypanosoma brucei*. *J Antimicrob Chemother* 1996, **38**:1041-1047.
- Saraiva VB, Gibaldi D, Previato JD, Mendonça-previato L, Bozza MT, Freire-de-Lima CG, Heise N: Proinflammatory and cytotoxic effects of hexadecylphosphocholine (miltefosine) against drug-resistant strains of *Trypanosoma cruzi*. *Antimicrob Agents Chemother* 2002, **46**:3472-3477.
- Blahe C, Duchêne M, Aspöck H, Walochnik J: In vitro activity of hexadecylphosphocholine (miltefosine) against metronidazole-resistant and -susceptible strains of *Trichomonas vaginalis*. *J Antimicrob Chemother* 2006, **57**:273-278.
- Seifert K, Duchenne M, Wernsdorfer WH, Kollaritsch H, Scheiner O, Wiedermann G, Hottokowitz T, Eibl H: Effects of miltefosine and other alkyllysophosphocholines on human intestinal parasite *Entamoeba histolytica*. *Antimicrob Agents Chemother* 2001, **45**:1505-1510.
- Walochnik J, Duchene M, Seifert K, Obwaller A, Hottokowitz T, Wiedermann G, Eibl H, Aspöck H: Cytotoxic activities of alkyllysophosphocholines against clinical isolates of *Acanthamoeba* spp. *Antimicrob Agents Chemother* 2002, **44**:695-701.
- Schuster FL, Guglielmo BJ, Visvesvara GS: In-vitro activity of miltefosine and voriconazole on clinical isolates of free-living amoebae: *Balamuthia mandrillaris*, *Acanthamoeba* spp., and *Naegleria fowleri*. *J Eukaryot Microbiol* 2006, **53**:121-126.
- Walochnik J, Obwaller A, Gruber F, Mildner M, Tschachler E, Suchomel M, Duchene M, Auer H: Anti-Acanthamoeba efficacy & toxicity of miltefosine in an organotypic skin equivalent. *J Antimicrob Chemother* 2009, **64**:539-545.
- Widmer F, Wright LC, Obando D, Handke R, Ganendren R, Ellis DH, Sorrell TC: Hexadecylphosphocholine (miltefosine) has broad-spectrum fungicidal activity and is efficacious in a mouse model of cryptococcosis. *Antimicrob Agents Chemother* 2006, **50**(2):414-412.
- Llull D, Rivas L, Garcia E: In vitro bactericidal activity of the antiprotozoal drug miltefosine against *Streptococcus pneumoniae* and other pathogenic *Streptococci*. *Antimicrob Agents Chemother* 2007, **51**:1844-1848.
- Chugh P, Bradel-Tretheway B, Monteiro-Filho CM, Vicente P, Sanjay M, Stephen D, Baek k: AKT inhibitors as an HIV-1 infected macrophage-specific anti-viral therapy. *Retrovirology* 2008, **5**:11.
- Eissa MM, EL-Azzouni MZ, Amer El, Baddour NM: Miltefosine, a promising novel agent for Schistosomiasis mansoni. *Int J Parasitol* 2011, **41**:235-242.
- World Health Organization (WHO): Prevention and control of schistosomiasis and soil transmitted helminthiasis. Report of a WHO Expert Committee, Geneva. WHO Technical Report Series; 2002:912:1-57.
- Fenwick A, Webster JP: Schistosomiasis: challenge for control, treatment and drug resistance. *Curr Opin Infect Dis* 2006, **19**:577-582.
- Gonnert R, Andrew P: Praziquantel, a new broad-spectrum antischistosomal agent. *Z Parasitenkd* 1977, **52**:129-150.
- Doenhoff MJ, Pica-Mattoccia L: Praziquantel for the treatment of schistosomiasis: its use for control in areas with endemic disease and prospects for drug resistance. *Expert Rev Anti infe* 2006, **4**:199-210.
- Southgate VR, Rollinson D, Tchien Tchuente A, Hagan P: Towards control of schistosomiasis in sub-Saharan Africa. *J Helminthol* 2005, **79**:181-185.
- Ismail M, Botros S, Metwally A, William S, Farghally A, Tao LF, Day TA, Bennett JL: Resistance to praziquantel: direct evidence from *Schistosoma mansoni* isolated from Egyptian villagers. *Am J Trop Med Hyg* 1999, **60**:932-935.
- Doenhoff M, Kusel JR, Coles GC, Cioli D: Resistance of *Schistosoma mansoni* to praziquantel: Is there a problem? *Trans R Soc Trop Med Parasitol* 2002, **96**:465-469.
- Lawn SD, Lucas SB, Chiodini PL: Case report: *Schistosoma mansoni* infection: failure of standard treatment with praziquantel in a returned traveler. *Trans R Soc Trop Med Hyg* 2003, **97**:100-101.
- Alonso D, Munoz J, Gascón J, Valls ME, Corachan M: Failure of standard treatment with praziquantel in two returned travelers with *Schistosoma haematobium* infection. *Am J Trop Med Hyg* 2006, **74**:342-344.
- Botros SS, Bennett J: Praziquantel resistance. *Expert Opin Drug Discov* 2007, **2**:S35-S40.
- World Health Organization (WHO): In *Epidemiology and control of schistosomiasis. Volume 643*. WHO Technical Report Series; 1980.
- World Health Organization (WHO): Molluscicide screening and Evaluation. *Bull World Health Organ* 1965, **33**:567-581.
- Yousif F, Hifnawy MS, Soliman G, Boulos L, Labib TH, Mahmoud S, Ramzy F, Yousif M, Hassan I, Mahmoud K, El-Hallouty SM, EL-Gendy M, Gohar L, EL-Manawaty M, EL-Menshawhi BS: Large-scale in vitro screening of Egyptian native and cultivate plants for schistosomicidal activity. *Pharma Biol* 2007, **45**:501-510.
- Ramirez B, Bickle Q, Yousif F, Mouries MA, Nwaka S: *Schistosoma* Challenge in compound screening. *Expert opinion Drug Discovery* 2007, **2**:1-9.
- Shaw MK, Erasmus DA: *Schistosoma mansoni*: structural damage and tegumental repair after in vivo treatment with praziquantel. *Parasitology* 1987, **94**:243-254.
- Feldmeier H, Chitsulo L: Therapeutic and operational profiles of metrifonate and praziquantel in *Schistosoma haematobium* infection. *Arzneimittelforschung* 1999, **49**:557-565.
- Danso-Appiah A, Gamer P, Olliaro PL, Utzinger J: Treatment of urinary schistosomiasis: methodological issues and research needs identified through a cochrane systematic review. *Parasitology* 2009, **136**:1837-1849.
- Bentley GN, Jones AK, Agnew A: Mapping and sequencing of acetylcholinesterase genes from the platyhelminth blood fluke *Schistosoma*. *Gene* 2003, **18**:103-112.
- Utzinger J, Keiser J, Shuhua X, Tanner M, Singer BH: Combination chemotherapy of schistosomiasis in laboratory studies and clinical trials. *Antimicrob Agents Chemother* 2003, **47**:1487-1495.
- Miller FH, Tulloch GS, Kuntz RE: Scanning electron microscopy of integumental surface of *Schistosoma mansoni*. *J Parasitol* 1972, **58**(6):93-98.
- Hockley DJ: Ultrastructure of the tegument of *Schistosoma*. *Adv Parasit* 1973, **11**:232-305.
- Manneck T, Haggemuller YO, Keiser J: Morphological effects and tegumental alterations induced by mefloquine on schistosomula and adult flukes of *Schistosoma mansoni*. *Parasitology* 2010, **137**:85-98.
- Kazura JW, De Brito P, Rabbage J, Alkawa M: Role of granulocyte oxygen products in damage of *Schistosoma mansoni* eggs in vitro. *J Clin Invest* 1985, **75**:1297-1307.
- Seed JL, Bennett JL: *Schistosoma mansoni* phenol oxidase's role in egg shell formation. *Exp Parasitol* 1980, **49**:430-441.
- Warren KS: The immunopathogenesis of schistosomiasis: a multi-disciplinary approach. *Trans R Soc Trop Med Hyg* 1972, **66**:417-437.
- LoVerde PT: Scanning electron microscope observations on the miracidium of *Schistosoma*. *Int J Parasitol* 1975, **5**:95-97.
- Eklun-Natey DT, Wuest J, Swiderski Z, Striebel HP, Huggel H: Comparative scanning electron microscope (SEM) study of miracidia of four human *Schistosoma* species. *Int J Parasitol* 1985, **15**:33-42.
- Samuelson JC, Caulfield JP: The cercarial glycocalyx of *Schistosoma mansoni*. *J Cell Biol* 1985, **100**:1423-1434.
- Bin Dajem SM, Mostafa OMS: Scanning electron microscopical studies on *Schistosoma mansoni* cercariae exposed to ultraviolet irradiation. *Australian Journal of Basic and Applied Sciences* 2007, **1**:776-784.
- Nargis M, Sato H, Ozaki T, Inaba T, Chisty M, Kamiya H: Cercaricidal effect of hinokitiol on *Schistosoma mansoni*. *Hirosaki Med J* 1997, **49**:49-57.
- Chisty MM, Nargis M, Inaba T, Ishita K, Osanai A, Kamiya H: Transmission electron microscopy of *Schistosoma mansoni* cercariae treated with

- hinokitiol (β - thujaplicin), a compound for potential skin application against cercarial penetration. *Tohoku J Exp Med* 2004, **202**:63-67.
49. Jiraungkoorskul W, Sahaphong S, Sobhon P, Riengrojpitak S, Kangwanransan N: Effects of Praziquantel and artesunate on the tegument of adult *Schistosoma mekongi* harboured in mice. *Parasitol Int* 2005, **54**:177-183.
 50. Kaufmann-Kolle P, Fleer EA: Morphological changes of adherent and nonadherent cells by treatment with hexadecylphosphocholine and 1-O-octadecyl-2-O-methyl-rac-glycero-3-phosphocholine observed by scanning electron microscopy. *Prog Exp Tumor Res* 1992, **34**:47-58.
 51. Rawi SM, El-Gindy HI, Abdel Kader A: I-New possible molluscicide from *Calendula micrantha officinalis* and *Ammi majus*. II-molluscicidal physiological and egg lying affect against *Biomphalaria alexandrina* and *Bulinus truncatus* snails. *J Ecotoxicol Environ Safety* 1996, **35**:261-267.
 52. Tadros MM, Abdel-Khalik SM, Melek F, Gaber NM: *Agave angustifolia*: A potential source of control agents against Schistosomiasis mansoni. *New Egypt J Med* 2008, **39**:169-176.
 53. El-Sherbini GT, Zayed RA, El-Serbini ET: Molluscicidal activity of some *Solanum* species extracts against the snail *Biomphalaria alexandrina*. *J Parasito Res* 2009, 10.1155/2009/474360.
 54. Yang G, Li W, Sun L, Wu F, Yang K, Huang Y, Zhou X: Molluscicidal efficacies of different formulations of niclosamide: result of meta-analysis of Chinese literature. *Parasit Vectors* 2010, **3**:84.

doi:10.1186/1756-3305-4-73

Cite this article as: Eissa et al.: Bioactivity of miltefosine against aquatic stages of *Schistosoma mansoni*, *Schistosoma haematobium* and their snail hosts, supported by scanning electron microscopy. *Parasites & Vectors* 2011 **4**:73.

Submit your next manuscript to BioMed Central
and take full advantage of:

- Convenient online submission
- Thorough peer review
- No space constraints or color figure charges
- Immediate publication on acceptance
- Inclusion in PubMed, CAS, Scopus and Google Scholar
- Research which is freely available for redistribution

Submit your manuscript at
www.biomedcentral.com/submit

