

RESEARCH ARTICLE

Open Access

Corrosion inhibition properties of pyrazolyindolenine compounds on copper surface in acidic media

Mehdi Ebadi^{1,2*}, Wan Jeffrey Basirun^{1,3}, Hamid Khaledi¹ and Hapipah Mohd Ali¹

Abstract

Background: The corrosion inhibition performance of pyrazolyindolenine compounds, namely 4-(3,3-dimethyl-3H-indol-2-yl)-pyrazole-1-carbothioamide (InPzTAM), 4-(3,3-dimethyl-3H-indol-2-yl)-1H-pyrazole-1-carbothiohydrazide (InPzTH) and 3,3-dimethyl-2-(1-phenyl-1H-pyrazol-4-yl)-3H-indole (InPzPh), on copper in 1M HCl solution is investigated by electrochemical impedance spectroscopy (EIS), open circuit potential (OCP) and linear scan voltammetry (LSV) techniques.

Results: The results show that the corrosion rate of copper is diminished by the compounds with the inhibition strength in the order of: InPzTAM > InPzTH > InPzPh. The corrosion inhibition efficiencies for the three inhibitors are 94.0, 91.4 and 79.3, for InPzTAM, InPzTH and InPzPh respectively with the same inhibitor concentration (2 mM).

Conclusion: From the EIS, OCP and LSV results it was concluded that pyrazolyindolenine compounds with S-atom (with an amine group) have illustrated better corrosion inhibition performance compared to hydrazine and phenyl group.

Keywords: Corrosion behaviour, Copper, Electro-corrosion, FESEM, Acid inhibition

Background

Corrosion reactions are thermodynamically favourable on less noble metals and alloys when exposed to a corrosive environment such as chloridric acid. The inhibition of these reactions can be controlled by many types of organic and inorganic compounds [1-4], but organic compounds are the more common type of corrosion inhibitors. Most organic compounds which are efficient corrosion inhibitors contain functional groups which incorporate phosphorus, oxygen, nitrogen, sulfur atoms and multiple bonds [5,6]. The action of these inhibitors are closely related to factors such as: the types of functional groups, the number and type of adsorption sites, the charge distribution in the molecules and the type of interaction between the inhibitors and the metal surface [7]. A large number of organic compounds have been investigated as corrosion inhibitors for different types of metals [8-10].

With increased awareness towards environmental pollution and control, the search for less toxic and environment friendly corrosion inhibitors are becoming increasingly important.

We have recently reported the synthesis and the structures of new pyrazolyindolenine compounds which are 4-(3,3-dimethyl-3H-indol-2-yl)-pyrazole-1-carbothioamide (InPzTAM), 4-(3,3-dimethyl-3H-indol-2-yl)-1H-pyrazole-1-carbothiohydrazide (InPzTH) and 3, 3-dimethyl-2-(1-phenyl-1H-pyrazol-4-yl)-3H-indole (InPzPh) [11]. The corrosion inhibition properties of these compounds on copper surface in hydrochloric acid media are investigated using electrochemical impedance spectroscopy (EIS), open circuit potential (OCP), and field emission scanning electron microscopy (FESEM) techniques. The chemical structures of the compounds are shown in Figure 1.

Experimental

Preparation of the pyrazolyindolenine compounds

The three pyrazolyindolenine compounds were synthesised through the reaction of 2-(diformylmethylidene)-3, 3-dimethylindole with thiosemicarbazide (for InPzTAM), with thiocarbohydrazide (for InPzTH) and with phenylhy-

* Correspondence: mehdi_2222002@yahoo.com

¹Department of Chemistry, Faculty of Science, University of Malaya, 50603, Kuala Lumpur, Malaysia

²Department of Chemistry, Faculty of Science, Islamic Azad University-Gorgan Branch, Gorgan, Iran

Full list of author information is available at the end of the article

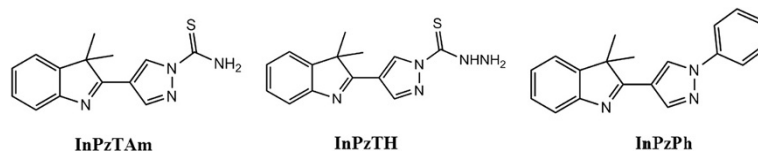


Figure 1 Molecular structure of the pyrazolyindolenine compounds.

drazide (for InPzPh). The details of the synthetic and characterization methods are described elsewhere [11].

Corrosion characterization techniques

All experiments were done using Cu plates of 99.9% purity (Goodfellow Cambridge) in 1 M HCl aqueous media containing various amount of pyrazolyindolenine compounds: InPzTAm (0–2.5 mM l⁻¹), InPzTH (0–2.5 mM l⁻¹) and InPzPh (0–4 mM l⁻¹). The Cu plates (0.3 × 1 × 1 cm) were polished with emery paper (2000 grit), rinsed in distilled water and ultrasound in acetone to remove oily stains. A three-compartment cell was used in the corrosion measurements with a saturated calomel electrode (SCE) as the reference electrode and Cu plate and platinum wire with the same surface area as the working and counter electrodes respectively. Frequency response analysis (FRA) software was used in the EIS experimental and simulation process, while general purpose electrochemical software (GPES) was used in the linear scan voltammetry (LSV, Tafel) and open circuit potential (OCP) techniques. The software was installed in a computer interfaced with an Autolab (302 N) potentiostat/galvanostat instrument. The scan rate for LSV was 10 mV s⁻¹, while the potential range was between 0.3 V to -0.4 V). The EIS measurements were carried out at the OCP value with a frequency domain of 100 kHz-10 mHz with an amplitude of 5 mV. Prior to all analysis (EIS and LSV) the Cu plates were immersed in the corrosive solution (1 M HCl) containing different amount of inhibitors for 1 hr to obtain the OCP value. A JEOL JSM-840A field emission scanning electron microscopy (FESEM) instrument was used to capture the images of the copper surface after immersion in the corrosive solution for 1 week.

Results and discussions

Electrochemical impedance spectroscopy

The Nyquist and Bode plots are used to study the corrosion inhibition performance of the pyrazolyindolenine compounds. The Nyquist plots for the copper plates in corrosive media (1 M HCl) in the absence and presence of different amounts of the pyrazolyindolenine compounds are shown in Figure 2 (a, b and c). In the Nyquist plot, the diameter of the semicircles represents the charge transfer resistance (R_{ct}) between the outer Helmholtz plane (OHP) and the electrode surface [12], and can be determined from the difference between the lower and

higher frequency intercepts on the real axis Z_r [13]. With the correct choice of the equivalent circuits, the closest fit to the experimental data can be done by simulation where the chi-squared value is minimised to 10⁻⁴ (Figure 2a-c). The solution resistance (R_s) is the resistance between the working electrode (WE) and the counter (CE) and reference electrode (RE). The ability of the Helmholtz plane to accumulate charges can be defined as the double layer capacitance (C_{dl}). The constant phase element (CPE) instead of C_{dl} , is introduced in the simulation of the experimental data to obtain a more accurate fit. The impedance of the CPE (Z_{CPE}) is a function of angular frequency ($\omega=2\pi f$) and the magnitude of “ Q ” and “ n ”. Furthermore, R_f is the resistance of the inhibition film on the copper surface. Instead of the capacitance of inhibition film (C), a constant phase element (CPE, denoted as Q_f in the circuit) is introduced and it forms the first parallel combination. The impedance of CPE can be written as [14,15]:

$$Z_{CPE} = Q^{-1}(j\omega)^{-n} \quad (1)$$

The conversion of Q to C_{dl} is given by the following equation [16]:

$$C_{dl} = Q(\omega_{max})^{n-1} \quad (2)$$

where ω_{max} is the angular frequency when Z imaginary (Z_i) is maximum and n is the phase shift and is the degree of surface in-homogeneity. The value of “ n ” is also related to the slope of the $\log \Re Z \Re$ vs. $\log f$ in the Bode plot, when $n=1$, then $Q = C_{dl}$.

Figure 2 (a, b and c) shows that the semicircle diameter (therefore the charge transfer resistance, R_{ct}) increases with the increase of the inhibitor concentration. The inhibition efficiency of the compounds are calculated and tabulated in Table 1.

$$\eta\% = \frac{R_{ct.(inhib.)} - R_{ct.(blank)}}{R_{ct.(inhib.)}} \times 100 \quad (3)$$

where $R_{ct.(inhib.)}$ and $R_{ct.(blank)}$ are the charge transfer resistance in the presence and absence of the inhibitors respectively [17]. From Table 1 unlike the R_{ct} , the change of the C_{dl} is not consistent with the increase of the inhibitor concentration, but is a function of the double layer thickness (δ). Therefore, the C_{dl} is affected by the changes in the double layer thickness (δ) [17], where $C_{dl} = (\epsilon\epsilon_0/\delta)$, where ϵ is the dielectric constant of the protective layer

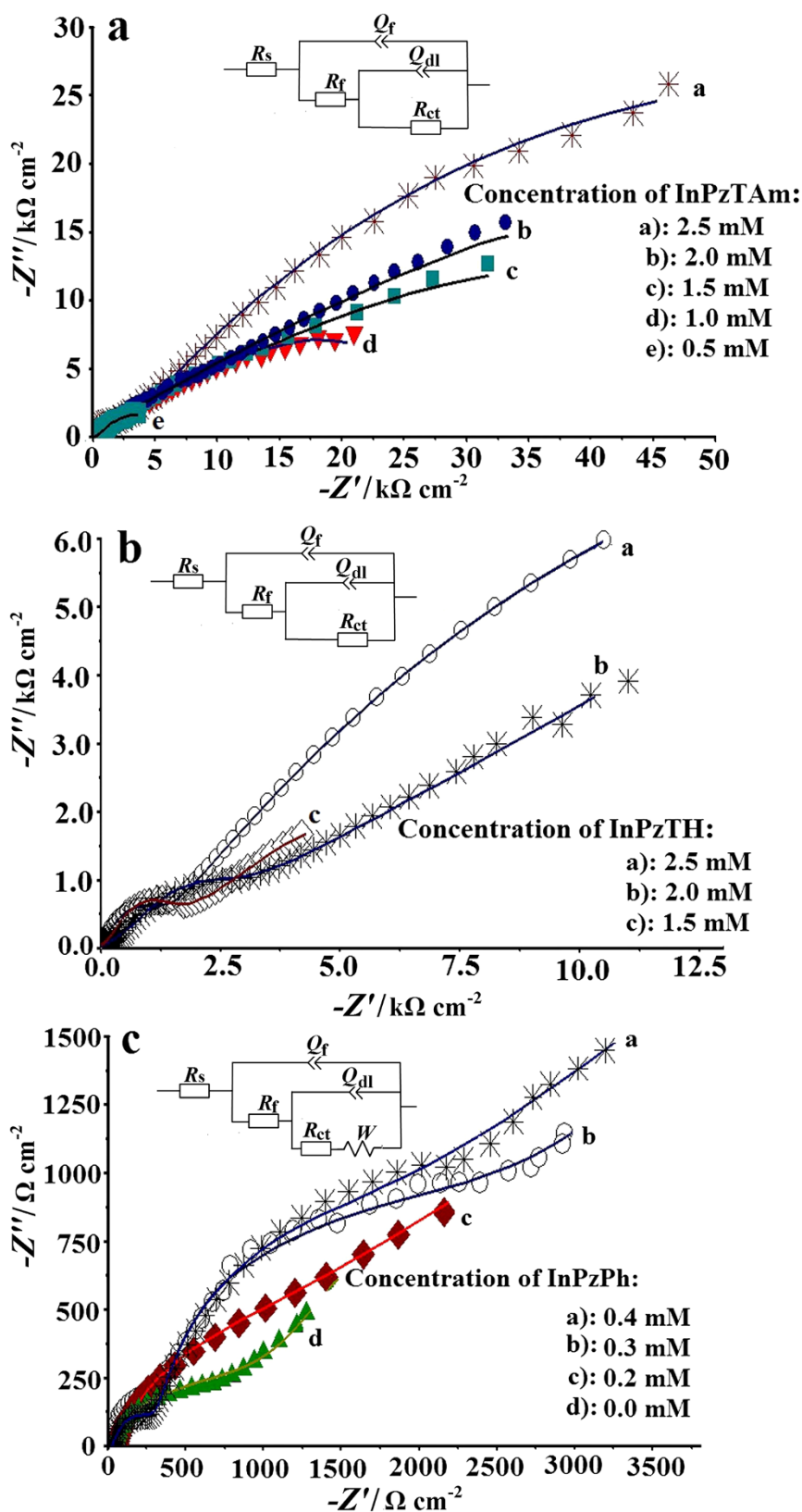


Figure 2 The Nyquist plots (vs. SCE) for copper plates immersed in various amounts of pyrazolyindolenine compounds in 1 M HCl. The symbols represent experimental data while the continuous line represent simulation.

Table 1 EIS simulation results of copper surface in 1 M HCl with the presence of different inhibitor concentration

Elements→ Inhib.↓	Inhi. Conc. (mM l ⁻¹)	R _s (Ω cm ²)	R _{ct} (kΩ cm ²)	n	Q mS.s ⁿ . cm ⁻²	C _{dl} (μF cm ⁻²)	W mS.s ^{1/2} . cm ⁻²
Blank	0.0	19.21	0.298	0.7142	7.35×10 ⁻³	149.3	4.05×10 ⁻⁴
InPzPh	1.0	357	2.044	0.7448	1.44×10 ⁻⁴	11.90	5.88×10 ⁻⁴
	2.0	27.2	2.562	0.8910	4.32×10 ⁻⁵	14.63	5.23×10 ⁻³
	3.0	59.2	2.923	0.9132	4.41×10 ⁻⁵	18.31	5.26×10 ⁻³
	4.0	28	4.32	0.9104	1.44×10 ⁻⁴	57.25	5.06×10 ⁻³
InPzTH	2.5	31.17	35.92	0.6573	1.55×10 ⁻⁴	2.27	
	2.0	36.2	21.14	0.6762	2.77×10 ⁻⁴	5.65	
	1.5	18.92	11.56	0.7060	4.05×10 ⁻⁴	15.49	
	1.0	27.23	1.8	0.852	4.83×10 ⁻⁴	17.31	
InPzTAm	2.0	30.40	174.5	0.8263	2.62×10 ⁻⁶	0.24	
	1.5	24.23	143.5	0.8782	1.18×10 ⁻⁶	0.23	
	1.0	17.39	68.7	0.8060	3.13×10 ⁻⁶	0.39	
	0.5	17.48	56.5	0.8089	3.03×10 ⁻⁶	0.27	

and ϵ_0 the permeability of free space respectively. Khaled [18] has reported that the charge resistance of copper surface was increased from 0.58 (bare copper) to 11.77 kΩ/cm² when N-(5,6-diphenyl-4,5-dihydro-[1,2,4] triazin-3-yl)-guanidine (NTG) (0.01 M) was added to H₂SO₄ (0.5 M) media. It was found that the synthesized compounds (specifically InPzTAm) has shown good corrosion inhibition efficiency on copper surface compared to previous results by other researchers [19-22].

Potentiodynamic measurements and thermodynamic calculations

Potential-thermodynamic polarization is done on copper plates in 1.0 M HCl at room temperature containing various amounts of the inhibitor compounds (InPzTAm: 0.5-2.5 mM, InPzTH: 1-2.5 mM and InPzPh: 1-4 mM), and is shown in Figure 3 (a, c and e). The electrochemical parameters such as corrosion rate (CR), corrosion potential (E_{corr}), corrosion current (I_{corr}), Tafel slopes and the inhibition efficiency ($E\%$) are obtained from the potentiodynamic measurements and given in Table 2. Li et al. [23] and Ferreira et al. [24] have suggested that a cathodic and an anodic type inhibitor will show E_{corr} shift of more than 85 mV with respect to the E_{corr} without the inhibitor, and a mixed type of inhibitor will show a shift of less than 85 mV.

In this work the displacement range of E_{corr} for InPzTAm (Figure 3a) is 15.9-62.9 mV towards the anodic region, whereas InPzTH shows a 32.8-7.3 mV displacement to the anodic region (Figure 3c). Figure 3e shows that the Tafel curve has a small shift to the cathodic zone (< 85 mV) with the increase of InPzPh (54.4-5.2 mV). Therefore it can be concluded that the pyrazolyindole-nine inhibitors (InPzTAm, InPzTH and InPzPh) show mixed type behaviour. From Figure 3a, the InPzTAm

concentration of 2.5 mM shows maximum inhibition efficiency. The corrosion rate of the copper plate decreases from 4.69 mm y⁻¹ to 1.9×10⁻¹ mm y⁻¹ with the addition of 0 to 2.5 mM l⁻¹ for InPzTAm; from 4.69 mm y⁻¹ to 2.1×10⁻¹ mm y⁻¹ with the addition of 0 to 2.5 mM l⁻¹ for InPzTH; and from 4.69 mm y⁻¹ to 7.2×10⁻¹ mm y⁻¹ with the addition of 0 to 4.0 mM l⁻¹ for InPzPh. These results are consistent with the EIS results. The inhibition efficiency ($\eta\%$) is calculated using the data from the corrosion potential (E_{corr}), cathodic and anodic Tafel slopes (β_c and β_a , respectively) and corrosion current density (I_{corr}), and are tabulated in Table 2. From Table 2, larger differences in the cathodic slopes are shown by InPzTAm and InPzTH. This can be attributed to the thickening of the electrical double layer due to the adsorbed inhibitor molecules. According to Bockris and Srinivason [25], this behaviour is associated with the changes in the mechanism of the cathodic reaction, e.g. hydrogen evolution reaction (HER). On the other hand, there are no significant changes for the anodic and cathodic Tafel slopes (β_a , β_c , respectively) for InPzPh. It can be suggested that there are also no significant changes in the inhibition mechanism of cathodic and anodic reactions with the increase of the InPzPh concentration.

The change of the corrosion rate with temperature (298 to 318 K) is also examined on the copper plates. Figure 3 (b and d) shows that the activity of the inhibitors decreases with the increase of temperature from 298 to 318 K. This is due to the decrease of adsorption strength of the inhibitor on the metal surface with the rise in temperature. The adsorption of the inhibitor is dependent on many factors such as temperature, adsorption of solvent, type of ions, thickness of the electrical double layer and charge density. The surface coverage (θ) is an important factor which can be used to describe the

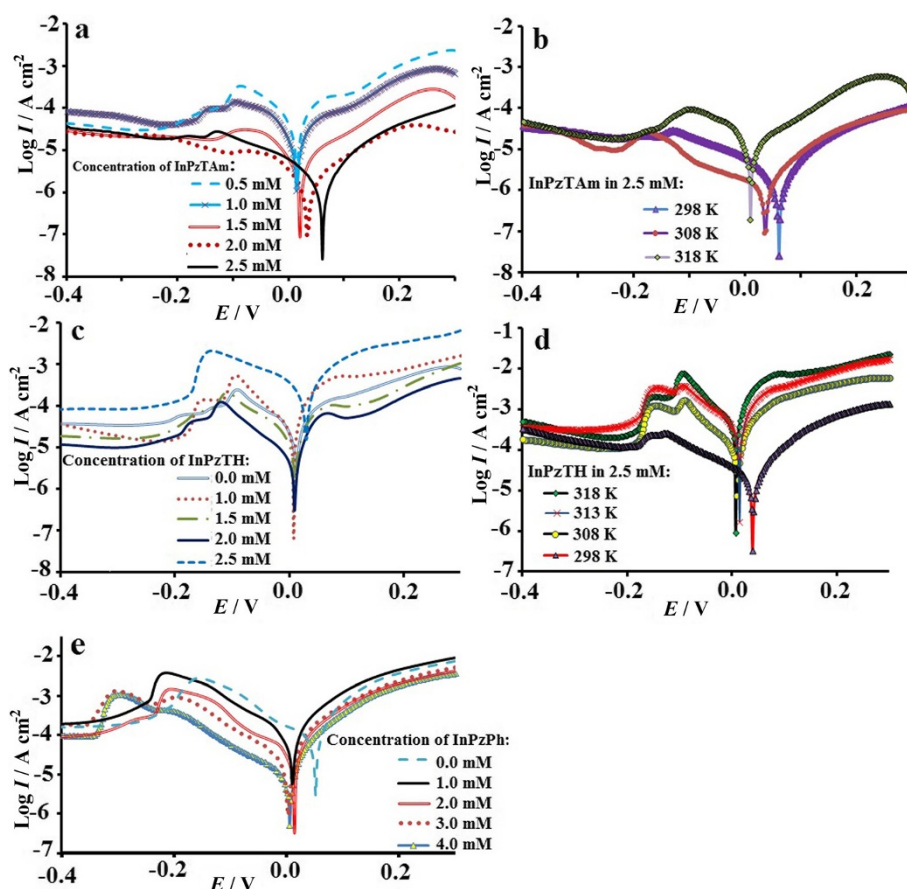


Figure 3 Tafel polarization curves (vs. SCE) for corrosion of Cu plates in 1 M HCl in the presence of different concentration of pyrazolyindolenine compounds (left side curves: a, c and e), Tafel plots in the right side (b and d) shows corrosion behaviour in the presence of 2.5 mM inhibitors at different temperatures.

Table 2 Electrochemical impedance parameters for copper plates in 1 M HCl solution in the absence and presence of different concentrations of the pyrazolyindolenine compounds

	Conc. Inhib. (mM)	$E_{corr.}$ (mV)	$I_{corr.}$ ($A\ cm^{-2}$)	β_c (mV/dec)	β_a (mV/dec)	R_p ($\Omega\ cm^{-2}$)	CR (mm/y)	$\eta\%$	$K_{ads.}$ (mol^{-1})	ΔG ($kJ\ mol^{-1}$)	θ
Blank	0.0	0.6	19×10^{-4}	184	144	368	4,694	-	-	-	-
InPzTAm	0.5	0.300	3.2×10^{-4}	187	114	290	3.7	21.1	2.74×10^{-4}	-6225	0.212
	1.0	0.013	3.7×10^{-5}	132	125	190	0.43	90.8	9.9×10^{-3}	-15633	0.909
	1.5	0.011	2.8×10^{-5}	107	74	120	0.34	92.7	12.7×10^{-3}	-32501	0.928
	2.0	0.008	2.4×10^{-5}	64	72	81	0.28	94.0	15.7×10^{-3}	-33552	0.940
	2.5	0.01	1.6×10^{-5}	87	44	99	0.19	95.9	23.4×10^{-3}	-44394	0.960
InPzTH	1.0	0.015	4.3×10^{-5}	218	215	470	0.49	89.5	8.58×10^{-3}	-15279	0.896
	1.5	0.02	5.8×10^{-6}	95	138	970	0.67	85.7	6.01×10^{-3}	-21595	0.857
	2.0	0.024	2.3×10^{-6}	101	129	1420	0.40	91.4	10.73×10^{-3}	-31666	0.915
	2.5	0.034	1.7×10^{-6}	98	121	2900	0.21	95.3	20.33×10^{-3}	-43542	0.953
InPzPh	1.0	0.015	7.0×10^{-5}	193	89	100	3.12	33.9	0.51×10^{-3}	-8235	0.340
	2.0	0.010	5.8×10^{-5}	127	89	84	0.97	79.3	3.84×10^{-3}	-26573	0.794
	3.0	0.002	3.3×10^{-5}	115	64	97	0.78	83.3	5.02×10^{-3}	-41852	0.834
	4.0	0.006	1.9×10^{-5}	142	63	210	0.72	84.6	5.52×10^{-3}	-56744	0.847

type of adsorption mechanism of the inhibitors. The common isotherms which are used to calculate the surface coverage (θ) are [26]:

$$\text{Frumkin isotherm: } (\theta/1-\theta)\exp(-2F\theta) = K_{\text{ads}} \cdot C$$

$$\text{Freundlich isotherm: } \theta = K_{\text{ads}} \cdot C$$

$$\text{Temkin isotherm: } \exp(f\theta) = K_{\text{ads}} \cdot C$$

$$\text{Langmuir isotherm: } (\theta/1-\theta) = K_{\text{ads}} \cdot C$$

where K_{ads} is the equilibrium constant for the adsorption process, C is the inhibitor concentration, and f is the energetic in-homogeneity. The Langmuir adsorption isotherm gives the best straight line for the inhibitors

(Figure 4a: $\log[\theta/1-\theta]$ vs. $\log C$). The calculation of θ value is given by [12]:

$$\theta = \frac{C_{\text{Ro}} - C_{\text{R}}}{C_{\text{Ro}} - C_{\text{Rm}}} \quad (4)$$

where C_{Ro} , C_{R} and C_{Rm} are the corrosion rate of copper plates for the uninhibited, inhibited and the highest concentration of the inhibitor in 1.0 M HCl solution respectively. The straight lines in Figure 4a ($\log[\theta/1-\theta]$ vs. $\log C$) suggest that the inhibitors at the metal/electrolyte interface follows the Langmuir adsorption isotherm. The thermodynamic parameters such as entropy of activation (ΔS), and enthalpy of activation (ΔH) and activation energy (E_a) are calculated using the Arrhenius equation (Eq. 6) [13]:

$$\log(CR) = \frac{-E_a}{2.303RT} + \lambda \quad (5)$$

$$CR = \frac{RT}{Nh} \exp\left(\frac{\Delta S}{R}\right) \exp\left(\frac{-\Delta H}{RT}\right) \quad (6)$$

where T is the temperature, R is the gas constant, N is the Avogadro number and h is the Plank constant. The diagram $\log(CR/T)$ vs. $(1000/T)$ is plotted and ΔH and ΔS are calculated from the slope and intercept, from the values of $(-\Delta H/2.303R)$ and $[\log(R/Nh) + (\Delta S/2.303R)]$ respectively (Figure 4b). It can be observed that the ΔS and ΔH are enhanced due to the increase of inhibitors in the corrosive electrolyte. The activation energy (ΔE) can be determined from the slope of $\log CR$ vs. $(1000/T)$ in Figure 4c.

The thermodynamic parameters such as activation energy (E_a) and the Arrhenius pre-exponential factor (λ) are obtained from the slope and intersection of the straight lines (Figure 4c). The linear regression coefficients (R^2) are close to 1 for all three inhibitors. The values of E_a and λ for the inhibitor compounds are tabulated in Table 3, where the highest and lowest values are shown by the InPzTAM and InPzPh respectively. The higher value of E_a shows a lower corrosion rate this is also confirmed by the electrochemical tests in this work.

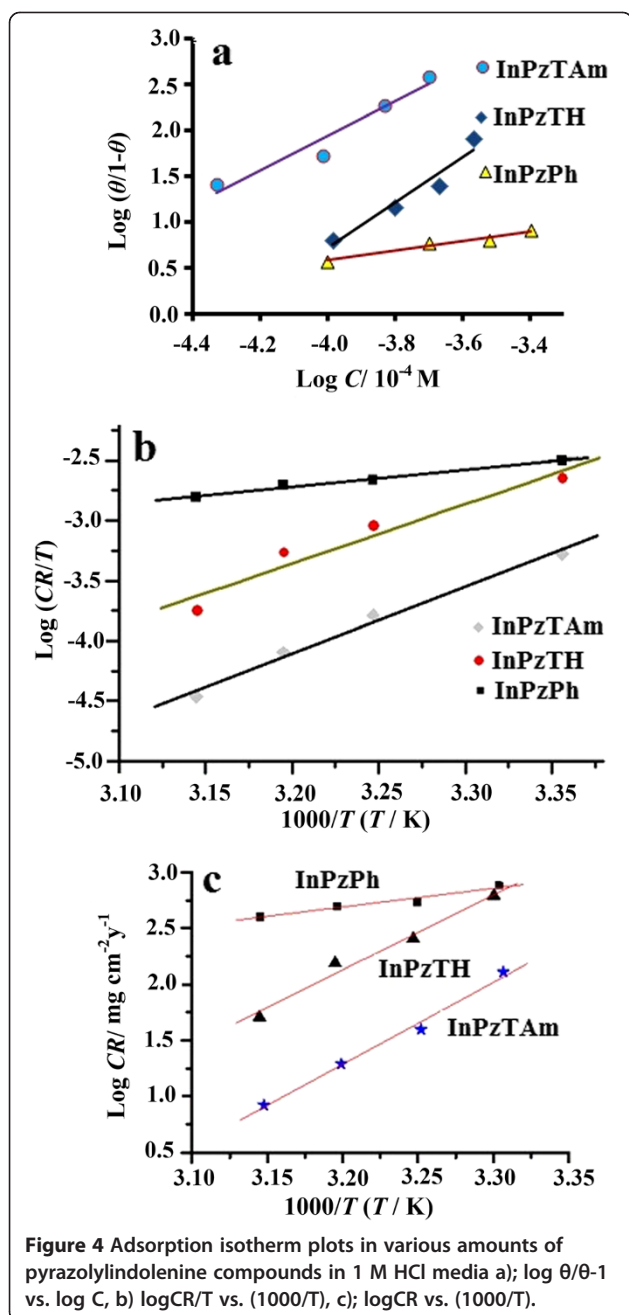


Figure 4 Adsorption isotherm plots in various amounts of pyrazolyindolenine compounds in 1 M HCl media a); $\log \theta/1-\theta$ vs. $\log C$, b) $\log CR/T$ vs. $(1000/T)$, c); $\log CR$ vs. $(1000/T)$.

Table 3 Computed molecular parameters for the pyrazolyindolenine compounds

	InPzTAM	Samples InPzTH	InPzPh
ΔS_{ads} (kJ mol ⁻¹)	-16.25	-38.24	-137.76
ΔH_{ads} (kJ mol ⁻¹)	-105.97	-94.62	-24.80
λ (mg cm ⁻² h ⁻¹)	-22.10 ± 1.60	-19.24 ± 2.19	-2.62 ± 0.91
E_a (kJ mol ⁻¹)	7.34 ± 0.49	6.68 ± 0.68	1.67 ± 0.28
E_{HOMO} (eV)	-0.2297	-0.2268	-0.2046
E_{LUMO} (eV)	0.19846	0.19864	0.18805
$\Delta E = E_{\text{LUMO}} - E_{\text{HOMO}}$	0.03124	0.02816	0.01655

Gaussian software 9.0 is used to study the quantum chemical behaviour of the inhibitor. The quantum chemical properties of the inhibitors are studied by calculating the energy of the highest occupied molecular orbital (E_{HOMO}) and the energy of lowest unoccupied molecular orbital (E_{LUMO}). Prior to the calculation using the Gaussian 9.0, optimizations of the inhibitor molecules are done by the same software.

The calculated E_{HOMO} and E_{LUMO} in Table 3 show that the E_{LUMO} and E_{LUMO} values are almost the same for InPzTAM and InPzTH. This is not unexpected since their molecular structures are almost similar. The E_{LUMO} values show that InPzTAM and InPzTH have good electron donor properties compared to InPzPh. This is due to the presence of sulfur atoms in both InPzTAM and InPzTH as shown in Figure 1, where the electron charge density is further away from the nucleus and can be donated easily for adsorption and bonding on the copper surface. However, the E_{HOMO} value for InPzPh shows good electron acceptor behaviour compared to InPzTAM and InPzTH. Frontier molecular orbital (FMO) density distributions for InPzTAM, InPzTH and InPzPh are shown in Figure 5. From the FMO results, the mechanism of inhibition on the copper surface can be described. It is a general assumption that the organic inhibitors are protonated in the acidic media. The adsorption of the inhibitors on the activated sites on the metal surface occurs by one or more of the following ways: (I) electrostatic interaction between the charged atoms of the inhibitors and the activated metal surface. (II) Unshared

electron pair of the hetero-atoms (in hetero-cyclic molecules) and metal surface atoms with vacant d-orbitals. (III) Interaction of π -electrons with metal surface atoms. (IV) Interaction between protonated inhibitors with adsorbed chloride ions. In our previous work [27], we have suggested that the nitrogen protonated caffeine molecule adsorbed the chloride ion while the electron pair of N-atom was bonded with the metal surface, thus preventing the chloride ion from attacking the metal surface. The adsorption mechanisms of the synthesized pyrazolyindolenine compounds on the copper surface are shown in Figure 6. The different strengths in the inhibition efficiency of these compounds are due to the different functional groups which are bonded with Pyrazolyindolenine base. The InPzTAM and InPzTH compounds have similar chemical structure, but InPzTAM shows better inhibition efficiency. Scheme 1 a shows that the inter-electron transfer from S-atom to the amine protonated group which decreases the electron density in the S-atom. Compared to scheme 1 a, the Scheme 1 b shows that both N-atoms (in Hydrazine group) are protonated hence more electrons from the S-atom can be transferred. The S-atom in InPzTAM with higher electron density thus better electron donor capabilities shows better corrosion inhibition properties compared to InPzTH with less electron density. The InPzPh shows the weakest corrosion inhibition efficiency which is due to the absence of the C=S group.

The hydrazine group in InPzTH with two N-atoms and the amine group in InPzTAM with one N-atom have slight difference in energies. Figure 5a and c show higher

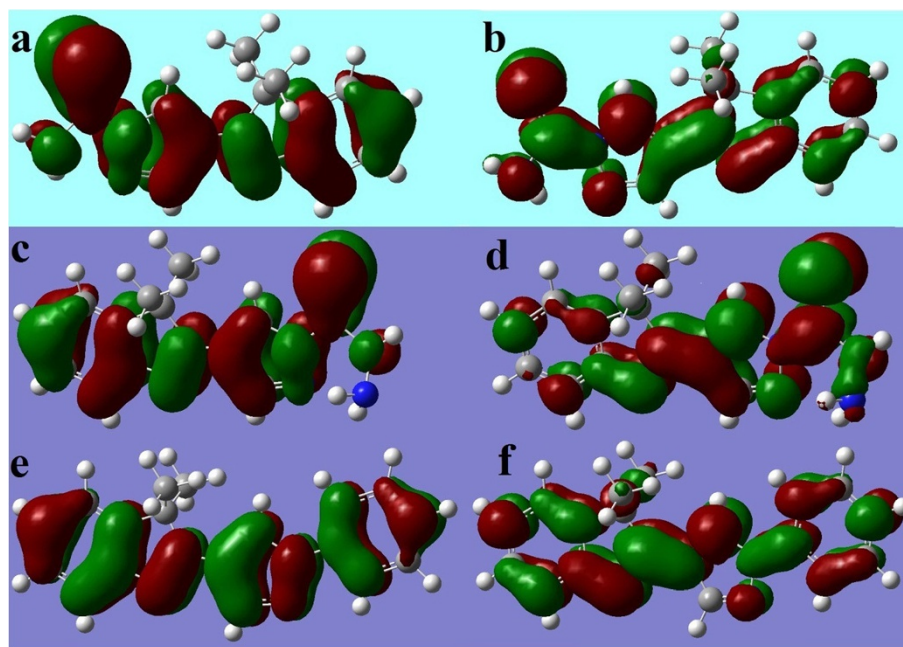
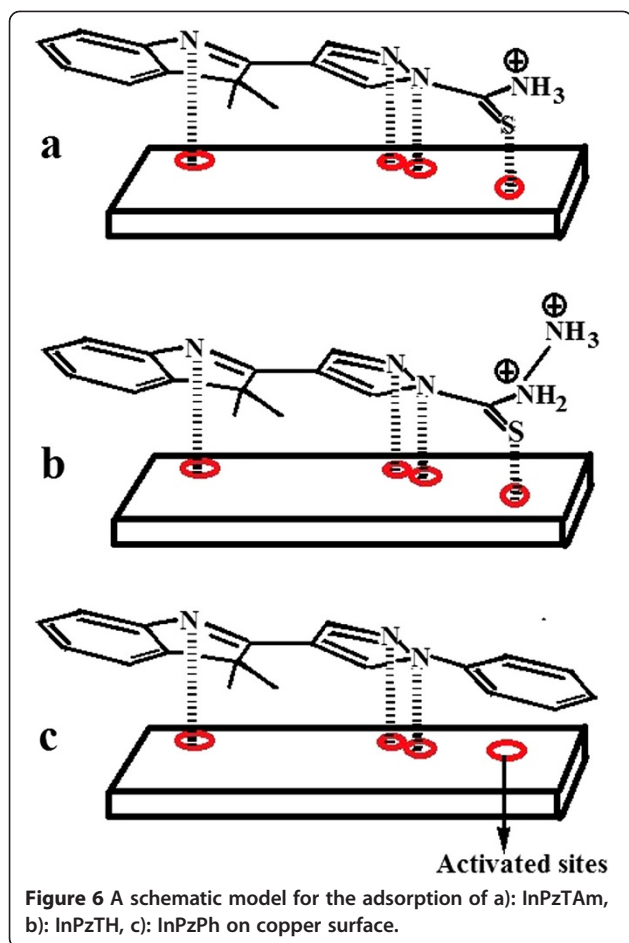


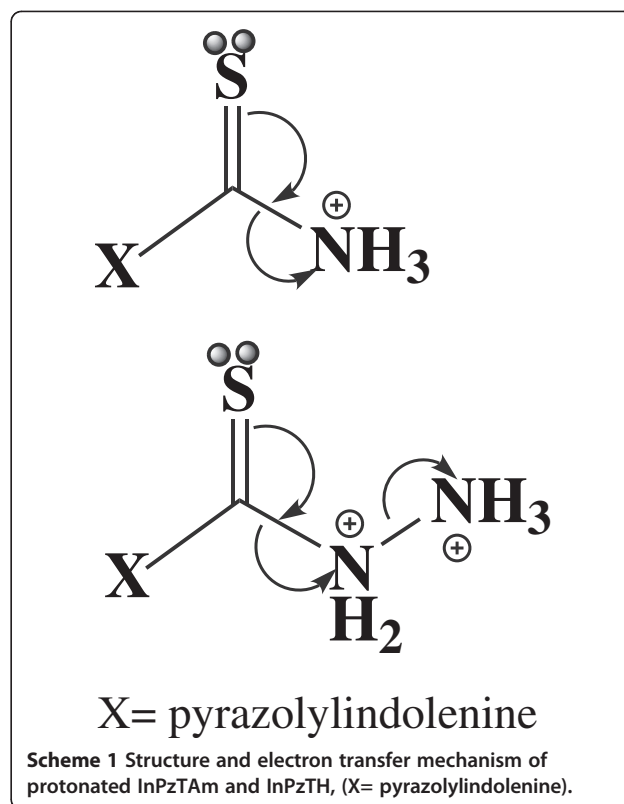
Figure 5 Frontier molecular orbital density distribution for InPzTAM (a; HOMO, b; LUMO), InPzTH (c; HOMO, d; LUMO) and InPzPh (e; HOMO, f; LUMO).



electron density in the vicinity of the N-atom in InPzTAM compared to N-atoms in the hydrazine group in InPzTH. Thus InPzTAM can be absorbed on copper activated sites via the donation of the unshared electron pair from the N and S-atoms to the copper metal. It was found that more electron density transfer from inhibitors to metal surface results in increased adsorption of the inhibitor molecules on the surface, thus better corrosion protection properties. Table 3 shows that the ΔE for compounds is in the order of InPzTAM > InPzTH > InPzPh. It can be shown that the electron transfer process in InPzTAM is faster compared to the other compounds.

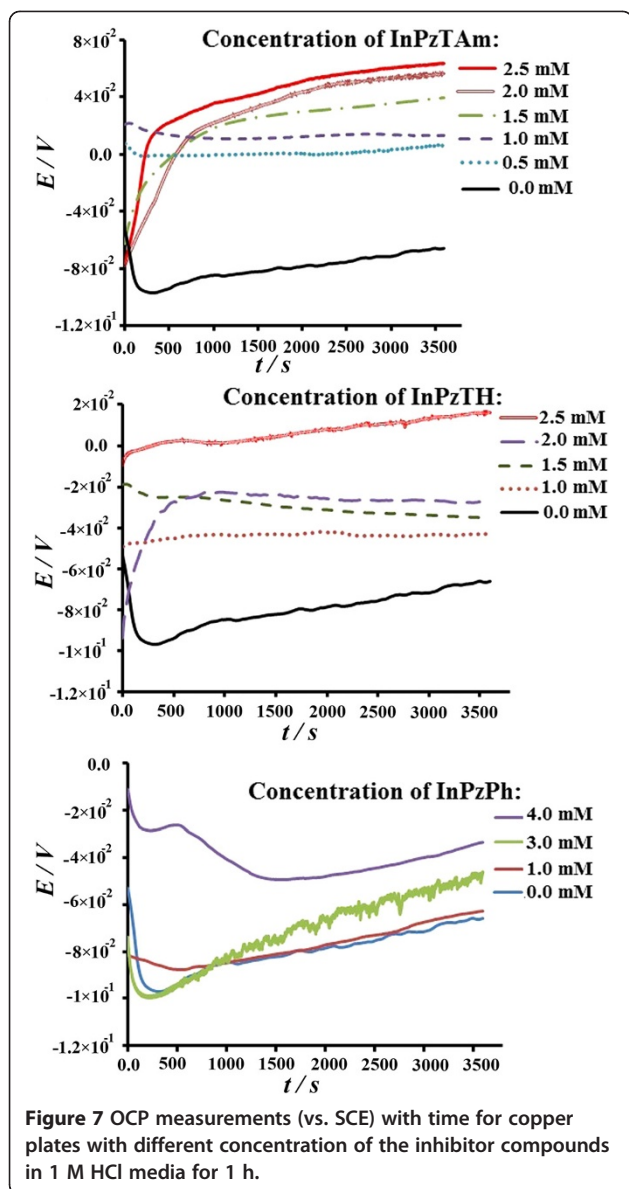
OCP measurements

The changes of the open circuit potential (OCP) with time for the copper electrode in 1 M HCl solution in the absence and presence of various amount of inhibitor (InPzTAM, InPzTH and InPzPh) concentration at room temperature are shown in Figure 7 (a, b and c). Generally, the OCP variation with time with different amount of inhibitor shows a similar behaviour. Upon the immersion of the electrode in the solution, an accentuated displacement of OCP towards negative values was observed. The quick



changes in the OCP curves could be due to the initial dissolution process of the oxide film formed on the bare copper surface. Soon afterwards (approximately 500 sec), the OCP increased towards positive regions while the metal surface was passivated due to the adsorption of the inhibitor compounds on the activated sites of Cu surface. It can be observed that the OCP shifts to more noble potentials with the increase of the inhibitor concentration. With the same concentration for all three inhibitors, the shift of the OCP towards more noble potentials is in the order of InPzTAM > InPzTH > InPzPh. The electrolyte has a high concentration of Cl^- and the Cl^- has a strong tendency to adsorb on the cathode surface, thus the local corrosion could be due to changes in the surface polarization [27]. With the increase of the inhibitor concentration in the corrosive electrolyte, the aggressive behaviour of Cl^- is quenched due to the increased adsorption of the inhibitors on the copper surface, thus the OCP moves towards noble potentials. Surface coverage (θ) is calculated and tabulated in Table 2. It shows that the increase of surface coverage is in the order of: InPzTAM > InPzTH > InPzPh, thus the adsorption of the inhibitors are also in that respective order.

From Figure 7, the lowest shift towards positive potential is for InPzPh due to the low surface coverage while the largest shift of towards positive potential is for InPzTAM. This phenomenon can be ascribed to the decrease of the charge transfer and subsequently mass transport of the Cl^- decreases with the formation of the



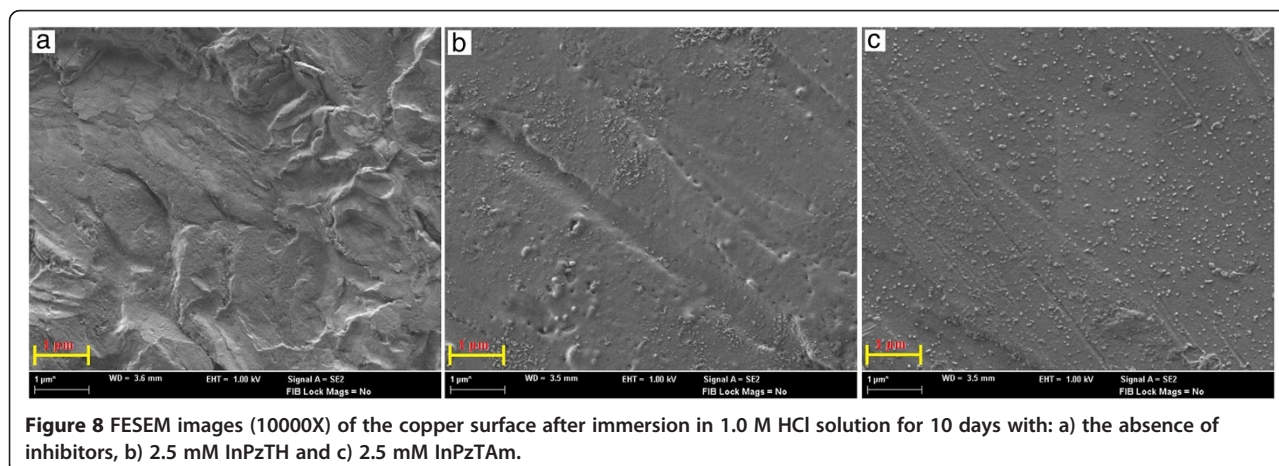
inhibitor adsorption on the copper surface. From the measurements of surface coverage θ and K_{ads} , the strength of the inhibitor adsorption on the copper surface is in the order of InPzTAM > InPzTH > InPzPh.

FESEM analysis

FESEM images of the copper surface are taken to establish a link between the surface morphology and the experimental results obtained for the inhibition performance of the InPzTAM and InPzTH compounds. Figure 8 (a, b and c) are surface images of copper plates which were immersed in 1.0 M HCl, 1.0 M HCl + 2.5 mM InPzTH and 1.0 M HCl + 2.5 mM InPzTAM for 10 days, respectively. Figure 8a shows the presence of cavities and depth roughness on the copper surface after 10 days of immersion time in 1.0 M HCl, where the surface is strongly damaged in the absence of the inhibitors. On the other hand, surface images of 8b and 8c show that cavity formation and surface roughness on the copper surface has decreased with the presence of InPzTAM and InPzTH in the corrosive media (1.0 M HCl). The Cu surface with the presence of InPzTH (2.5 mM) shows few pit formation after immersion in 1.0 M HCl for 10 days (Figure 8b). The Cu surface with the presence of the InPzTAM did not show pit and cavity formation after 10 days of immersion time in the corrosive solution. The FESEM images for both inhibitor compounds conforms to the experimental results obtained in the previous sections.

Conclusion

The EIS, OCP and LSV measurements show that all three pyrazolyindolenine compounds (InPzTAM, InPzTH and InPzPh) give good inhibition performance against copper corrosion in 1 M HCl solution. OCP measurements show that the OCP moves towards more noble potentials with the increase in the inhibitor concentration. Tafel polarization experiments show that the R_p also increases with the increase of inhibitors in acidic media. EIS



simulation of the experimental data shows that InPzTAM and InPzTH have the same equivalent circuit but the Warburg element is present in the equivalent circuit for the InPzPh compound. The corrosion inhibition performance of these compounds for the same concentration (2 mM) is $\eta = 94.0\%$, $\eta = 91.4\%$ and $\eta = 79.3\%$ for InPzTAM, InPzTH and InPzPh respectively. From the EIS, OCP and LSV results, the higher corrosion efficiency for both InPzTAM and InPzTH compared to InPzPh is due to the presence of sulfur atoms in those compounds. From quantum chemical calculations, the presence of the sulfur atoms promote better electron donor ability for both compounds which give higher inhibition efficiency.

Abbreviations

InPzTAM: 4-(3,3-dimethyl-3H-indol-2-yl)-pyrazole-1-carbothioamide; InPzTH: 4-(3,3-dimethyl-3H-indol-2-yl)-1H-pyrazole-1-carbothiohydrazide; InPzPh: 3,3-dimethyl-2-(1-phenyl-1H-pyrazol-4-yl)-3H-indole; EIS: Electrochemical impedance spectroscopy; OCP: LSV: Open circuit potential, linear scan voltammetry; FESEM: Field emission scanning electron microscopy; SCE: Saturated calomel electrode; FRA: Frequency response analysis; GPES: General purpose electrochemical software; OHP: Outer Helmholtz plane; WE: Working electrode; CE: Counter electrode; CPE: Constant phase element; HER: Hydrogen evolution reaction; E_{HOMO} : Occupied molecular orbital; E_{LUMO} : Unoccupied molecular orbital.

Competing interests

The authors declare that they have no competing interests.

Authors' contributions

ME completed the laboratory work, data treatment and drafted the manuscript. HK and HMA synthesized the inhibitors. WJB coordinated the study, data analysis and edited the text. All authors have read and approved the final manuscript.

Acknowledgments

The authors would like to thank the University of Malaya for financial support provided by research grants FP039 2010B and RG181-12SUS.

Author details

¹Department of Chemistry, Faculty of Science, University of Malaya, 50603, Kuala Lumpur, Malaysia. ²Department of Chemistry, Faculty of Science, Islamic Azad University- Gorgan Branch, Gorgan, Iran. ³Nanotechnology & catalysis research centre, Institute of postgraduate studies, University of Malaya, 50603, Kuala Lumpur, Malaysia.

Received: 26 August 2012 Accepted: 18 December 2012

Published: 31 December 2012

References

- Ahamad I, Prasad R, Quraishi MA: Adsorption and inhibitive properties of some new Mannich bases of Isatin derivatives on corrosion of mild steel in acidic media. *Corr Sci* 2010, **52**:1472–1481.
- Yadav DK, Maiti B, Quraishi MA: Electrochemical and quantum chemical studies of 3,4-dihydropyrimidin-2(1H)-ones as corrosion inhibitors for mild steel in hydrochloric acid solution. *Corr Sci* 2010, **52**:3586–3598.
- Edrah S, Hasan SK: Studies on thiourea derivatives as corrosion inhibitor for aluminum in sodium hydroxide Solution. *J Appl Sci Res* 2010, **6**(8):1045–1049.
- Tan YJ, Bailey S, Kinsella B: The monitoring of the formation and destruction of corrosion inhibitor films using electrochemical noise analysis (ENA). *Corr Sci* 1996, **38**:1681–1695.
- Sherif EM, Park S-M: Effects of 1,4-naphthoquinone on aluminum corrosion in 0.50 M sodium chloride solutions. *Electrochim Acta* 2006, **51**(7):1313–1321.
- Sherif EM, Park S-M: Inhibition of copper corrosion in 3.0% NaCl solution by N-phenyl-1,4-phenylenediamine. *J Electrochem Soc* 2005, **152**(10):B428–B433.
- E1-Dahan HA, Soror TY, El-Sherif RM: Studies on the inhibition of aluminum dissolution by hexamine-halide blends. *Mater Chem Phys* 2005, **89**:260–267.
- Antonijevic MM, Petrovic MB: Copper corrosion inhibitors. A review. *Int J Electrochem Sci* 2008, **3**:1–28.
- Fallavena T, Antonow M, Goncalves RS: Caffeine as non toxic corrosion inhibitor for copper in aqueous solutions of potassium nitrate. *Appl Surf Sci* 2006, **253**:566–571.
- Rajendran S, Vaibhavi S, Anthony N, Trivedi DC: Transport of inhibitors and corrosion inhibition efficiency. *Corr Sci* 2003, **59**(6):529–534.
- Khaledi H, Ali HM, Thomas NF, Ng SW: Reactions of 2-(Diformylmethylidene)-3,3-dimethylindole with Hydrazides: synthesis of new pyrazolylindolenine derivatives-the unprecedented one-pot pyrazole-thiadiazole double annulations. *J Heterocycl Chem* 2011, **48**:663–670.
- Ahamad I, Prasad R, Quraishi MA: Experimental and theoretical investigations of adsorption of fexofenadine at mild steel/hydrochloric acid interface as corrosion inhibitor. *J Solid State Electrochem* 2010, **14**:2095–2105.
- Quraishi MA, Singh A, Singh VK, Yadav DK, Singh AK: Green approach to corrosion inhibition of mild steel in hydrochloric acid and sulphuric acid solutions by the extract of Murraya Koenigii leaves. *Mater Chem Phys* 2010, **122**:114–122.
- Ebadi M, Basirun WJ, Alias Y: Influence of magnetic field on the electrodeposition of Ni-Co alloy. *J Chem Sci* 2010, **122**(2):279–285.
- Ebadi M, Basirun WJ, Alias Y, Mahmoudiana MR: S.Y. Lenga, Investigation of electrodeposition of Ni-Co-Fe-Zn alloys in DMSO with MHD effect. *Mater Charac* 2012, **66**:46–55.
- Hsu CG, Mansfeld F: Technical Note, Concerning the conversion of the constant phase element parameter Y_0 into a capacitance. *Corro* 2001, **57**(9):747–748.
- Singh AK, Quraishi MA: Investigation of the effect of disulfiram on corrosion of mild steel in hydrochloric acid solution. *Corr Sci* 2011, **53**:1288–1297.
- Khaled KF: Adsorption and inhibitive properties of a new synthesized guanidine derivative on corrosion of copper in 0.5 M H2SO4. *Appl Surf Sci* 2008, **255**:1811–1818.
- Larabi L, Benali O, Mekelleche SM, Harek Y: 2-Mercapto-1-methylimidazole as corrosion inhibitor for copper in hydrochloric acid. *Appl Surf Sci* 2006, **253**:1371–1378.
- Qin TT, Li J, Luo HQ, Li M, Li NB: Corrosion inhibition of copper by 2,5-dimercapto-1,3,4-thiadiazole monolayer in acidic solution. *Corr Sci* 2011, **53**:1072–1078.
- Behpour M, Ghoreishi SM, Niasari MS, Ebrahimi B: Evaluating two new synthesized S-N Schiff bases on the corrosion of copper in 15% hydrochloric acid. *Mater Chem Phys* 2008, **107**:153–157.
- Zhang D-Q, Cai Q-R, He X-M, Gao L-X, Kim GS: The corrosion inhibition of copper in hydrochloric acid solutions by a tripeptide compound. *Corr Sci* 2009, **51**:2349–2354.
- Li WH, He Q, Pei CL, Hou BR: Some new triazole derivatives as inhibitors for mild steel corrosion in acidic medium. *J Appl Electrochem* 2008, **38**:289–295.
- Ferreira ES, Giancomelli C, Giacomelli FC, Spinelli A: Evaluation of the inhibitor effect of L-ascorbic acid on the corrosion of mild steel. *Mater Chem Phys* 2004, **83**:129–134.
- Bockris JO'M, Srinivasan S: Elucidation of the mechanism of electrolytic hydrogen evolution by the use of H-T separation factors. *Electrochim Acta* 1964, **9**:31–44.
- Bouklah M, Hammouti B, Lagrenee M, Bentiss F: Thermodynamic properties of 2,5-bis(4-methoxyphenyl)-1,3,4-oxadiazole as a corrosion inhibitor for mild steel in normal sulfuric acid medium. *Corr Sci* 2006, **48**:2831–2842.
- Ebadi M, Basirun WJ, Leng SY, Mahmoudiana MR: Investigation of corrosion inhibition properties of caffeine on nickel by electrochemical techniques. *Int J Electrochem Sci* 2012, **7**:8052–8063.

doi:10.1186/1752-153X-6-163

Cite this article as: Ebadi et al.: Corrosion inhibition properties of pyrazolylindolenine compounds on copper surface in acidic media. *Chemistry Central Journal* 2012 **6**:163.