

STUDY PROTOCOL

Open Access

Acupressure for agitation in nursing home residents with dementia: study protocol for a randomized controlled trial

Rick Yiu Cho Kwan¹, Mason Chin Pang Leung² and Claudia Kam Yuk Lai^{1*}

Abstract

Background: Agitation is prevalent among people with dementia (PWD) in nursing homes. It frustrates both the PWD and their caregivers. Acupressure is a non-pharmacological intervention whose effectiveness is supported by preliminary studies. However, there is still a dearth of evidence to explain its effect for clinical use and further research. The present study is being conducted primarily to investigate the effects of acupressure as compared with sham-acupressure and usual care.

Methods/design: This study is a multicenter, assessor/participant/statistician-blinded, parallel group, randomized controlled trial taking place in Hong Kong nursing homes. We have been recruiting PWD over 65 years of age in nursing homes, who are experiencing agitation; 99 participants will be recruited in order to demonstrate a significant effect difference (that is, $f = 0.27$) with a power of 0.8 and a significance level of 0.05 among the three groups. Participants are assigned by permuted block randomization into three groups in a 1:1:1 ratio. In the acupressure group, participants receive acupressure at the Fengchi (GB20), Baihui (GV20), Shenmen (HT7), Niguan (PC6) and Yingtang (EX-HN3) acupoints. In the sham-acupressure group, participants receive pressure on five non-acupoints. In the usual-care group, participants receive no intervention apart from the care provided by the nursing homes. Participants assigned to the sham-acupressure and usual-care groups receive free acupressure, like those in the acupressure group, after completion of the study. The whole study lasts for 30 weeks, and its primary outcome measure is agitation. The general estimated equation model will be used to compare the effects among groups and time points. The trial is currently recruiting participants.

Discussion: This trial will provide a higher quality of evidence than previous studies on the use of acupressure for agitation in PWD. It will also provide newer evidence on acupressure in the population of PWD with agitation for clinical application and further research, including the effect on moderating stress, the delayed effect, the added effect on the placebo, and the effect on moderating the participant's use of psychotropic drugs.

Trial registration: Centre for Clinical Trials Clinical Trials Registry: CUHK_CCT00347 (Registration date: 13 December 2012).

Keywords: Acupressure, Dementia, Nursing home, Salivary cortisol, Agitation

* Correspondence: claudia.lai@polyu.edu.hk

¹School of Nursing, The Hong Kong Polytechnic University, Hong Kong, China

Full list of author information is available at the end of the article

Background

Agitation is excessive, disruptive and inappropriate activities with verbal, vocal and motor components that are unexplained by apparent needs or confusion [1-3]. It can also be conceptualized as one of many behavioral or psychological symptoms of dementia [4] or as a neuropsychiatric symptom [5]. Agitation is the term most commonly used by professionals in long-term care facilities to describe dementia-related behavioral symptoms [6,7]. Agitation is often the most prevalent neuropsychiatric symptom in residential care homes (RCHs), with prevalence ranging from 20.5% to 63% [8-11]. Agitation decreases quality of life [12,13], and causes many negative consequences, such as falling [14] and use of restraints [15]. Agitation in PWD also increases caregivers' burden [16,17] and distresses formal caregivers [17,18].

Acupressure is a non-pharmacological intervention whereby pressure is applied to specific acupoints on the body to treat a wide range of conditions or promote individual well-being [19]. It is a multi-modal therapy whose working mechanism can be explained by many different theories [20]. For example, traditional Chinese medicine (TCM) explains that acupressure stimulates the acupoints to enhance the energy or Qi flowing along the meridian, achieving therapeutic outcomes by improving the functions of body systems or Zangfu in the process [21]. Bio-chemical studies explain that stimulation of the acupoints by pressure may cause complex neuro-hormonal responses [22]. One of these responses may involve the hypothalamic-pituitary-adrenocortical axis to counteract the overproduction of cortisol and cause a relaxation response [23]. Similar manipulative therapies, such as massage and therapeutic touch, were shown to be useful in lowering the patient's stress and cortisol after treatment [24,25].

Preliminary studies [26-28] have shown that acupressure can reduce agitation in PWD. However, given that the participants and the RCH staff providing the outcome observation were not blinded in the previous studies, the extent of the placebo effect could not be estimated. Previous studies showed that manipulative therapies, such as massage [23,29] and therapeutic touch [25,30], had also reduced the agitation and stress of PWD. These studies led the present researchers to hypothesize that acupressure may produce an agitation-reducing effect by mediating the stress hormone (that is, cortisol) through tactile stimulation alone, instead of via acupoint stimulation. Many other factors that might account for the effect were not reported in previous studies, such as the delayed effect of the intervention and the use of psychotropic drugs.

Therefore, we designed the present study primarily to investigate the effectiveness of acupressure for reducing agitation, compared with sham-acupressure and usual

care. Meanwhile, we further investigated the effect of acupressure on stress moderation (that is, reduction of cortisol level), the delayed effect, the efficacy of acupressure in addition to the placebo effect (that is, compared with the sham-acupressure), and whether acupressure leads to a reduction in psychotropic drug use.

Methods/design

Design

This study is a multi-center, assessor/participant/statistician-blinded, parallel group, randomized controlled trial. Participants are randomly allocated to three groups in a 1:1:1 ratio: the acupressure group, the sham-acupressure group, and the usual-care group. Eligible participants will be recruited from nursing homes in Hong Kong.

Trial process

In order to recruit a sufficient number of participants in multiple nursing homes and balance the manpower demands, the whole study will be completed through six study cycles. The periods of each cycle partially overlap in order to efficiently utilize the manpower and study venues. Each study cycle lasts for 10 weeks, including a 2-week baseline period, a 2-week intervention period, and a 6-week follow-up period (Table 1). The whole study period lasts for 30 weeks.

Recruitment procedures

We have invited all the RCHs in Hong Kong that are registered under the Social Welfare Department and fulfill the following criteria: (1) they have more than 100 beds; and (2) they provide beds for moderate/severe functioning elders (that is, Care and Attention Homes and Nursing Homes) [31]. The RCHs are invited by mail and followed up by telephone. Of the RCHs who were interested in participating, 12 RCHs were selected randomly to launch this study. Only 12 were selected because it was estimated from the pilot study [32] that at least 12 RCHs with more than 100 beds each would provide sufficient participants for the study (that is, 99 participants). Within the 12 selected RCHs, our research team is working closely with RCH staff to screen all the residents against the selection criteria. After screening, all eligible residents are invited to participate in the study by telephone. Participants are included only if they meet the selection criteria and provide assent/informed consent, and if the next-of-kin provide written informed proxy consent (Figure 1).

Randomization

Permuted block randomization is used. The permuted block randomization list was generated by the web-based generator at www.randomization.com [33]. To guarantee allocation concealment, randomization is done by an

Table 1 Trial process chart of each study cycle

Tasks	Baseline	Treatment phase	Follow-up phase		
	Week -2	Week 0	Week 3	Week 5	Week 8
Participants/next-of-kin					
Informed consent	x				
Sign the proxy consent	x				
Obtain participant's assent	x				
Access medical record	x				
Physical examination	x				
Intervention					
Acupressure group (n =33)		x			
Control					
Sham-acupressure group (n =33)		x			
Usual-care group (n =33)		x			
Outcomes					
Agitation (CMAI)		x	x	x	x
Stress (salivary cortisol)		x	x	x	x
Monitoring					
Compliance with the intervention		x			
Reasons for withdrawal		x	x	x	x
Adverse events/safety		x	x	x	x

CMAI, Cohen-Mansfield Agitation Inventory.

independent research assistant who does not participate in any other parts of the research. Throughout the study period, the independent research assistant generates the randomization list and keeps the list. Information on the recruited participant (for example, name, age, and gender) is sent to the independent research assistant by email after the recruitment. The independent research assistant assigns the group code to each participant according to the randomization list and sends the information back to the researcher by email. The independent research assistant is blinded to the meaning of the group code.

Blinding

Participants, next-of-kin, data collectors, nursing home staff (that is, the formal caregivers providing the Cohen-Mansfield Agitation Inventory (CMAI) data and the nurses administering the psychotropic drugs), physicians prescribing the psychotropic drugs, and the statistician will be blinded to the group allocation status; however, blinding is clearly not possible in the usual-care group. The group allocation status will only be revealed after completion of the study.

Participants

This study focuses on older nursing home residents with dementia and agitation. Eligible participants should match all the inclusion criteria, and participants meeting any of the exclusion criteria should be excluded.

Inclusion criteria

Participants will be included if they fulfill the following criteria: (1) aged over 65 years, (2) documented as having dementia in the medical record, and (3) identified as

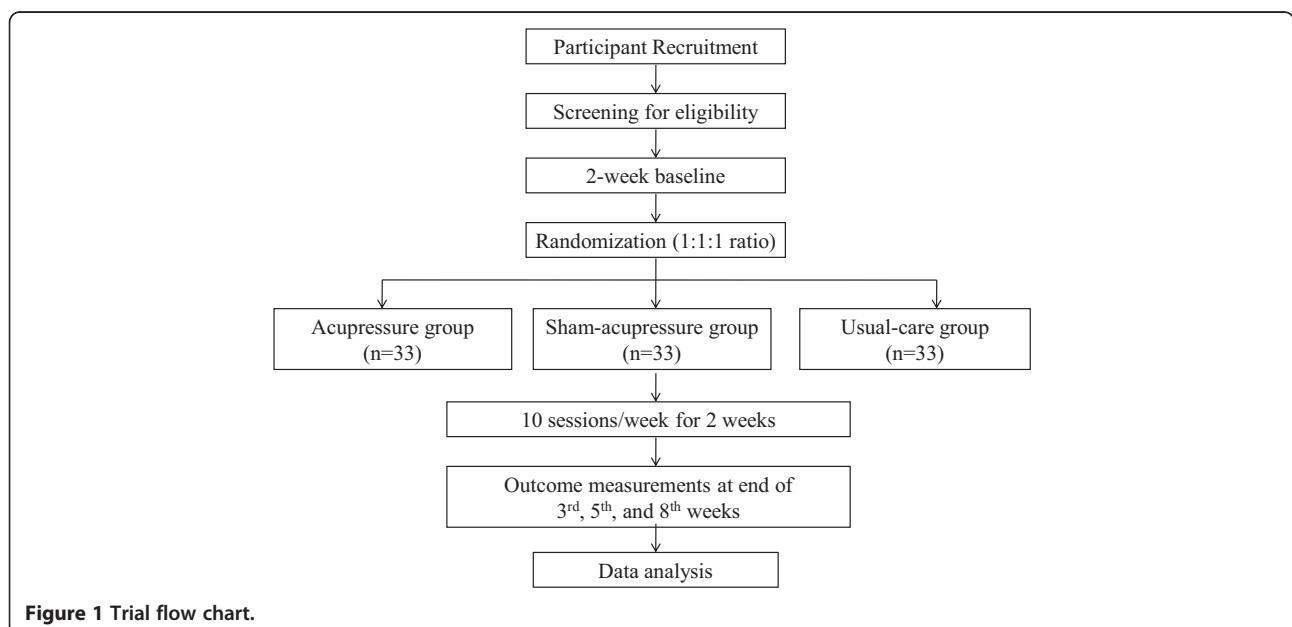


Figure 1 Trial flow chart.

having agitated behaviors for the period 1 month prior to the time of recruitment according to the criteria for agitation stated in the Instruction Manual for CMAI [34].

Exclusion criteria

Exclusion criteria are: (1) skin problems on acupoints (for example, skin breakdown, infection), (2) musculo-skeletal problems (for example, amputation of the acupoints), and (3) having received acupuncture/acupressure within the 8 weeks immediately prior to the day of recruitment.

Intervention

This intervention protocol was developed according to the 2008 Medical Research Council guideline for developing complex interventions [35]. The intervention was developed based on three methods: a literature review, the Delphi process [36] and a pilot study. The literature review [37] identified articles discussing the theories possibly connecting the use of acupressure and the agitation. Evidence relevant to the use of acupressure on agitation in PWD was retrieved by a systematic review from the major databases. The aim of the literature review was to identify the existing evidence and develop theories to explain why acupressure might work. The relevant information retrieved from the literature was then summarized as a document for the subsequent Delphi process. In the Delphi process [37], a panel of six TCM experts specializing in acupuncture was consulted. All TCM experts on the panel were TCM practitioners registered in either Hong Kong or mainland China with a bachelors degree or above. The expert panel has rich experience in practicing TCM and clinical acupuncture, with a median of over 15 years in practice. The Delphi process first asked the panel experts to suggest the intervention components (that is, the selection of acupoints), the intervention dosage, and the rationales for the selection of components. They were then asked to give suggestions with reference to the information provided in the literature and their own professional knowledge and experience. Finally, consensus on the procedural details of the intervention protocol was reached through three cycles of stepwise anonymous discussion until the content validity index achieved 1.0. Although consensus on the intervention dosage (that is, the duration and frequency) was reached in the Delphi process, the narrative comments from the Delphi process showed that the dosage was based on the experts' experience only because TCM theory does not discuss dosage. A pilot study was performed to provide supporting evidence for the dosage selection. In the pilot study [32], within the range of dosage suggestions given in the Delphi process, the effect of acupressure was compared among various dosages. It was found that shorter duration with higher

frequency showed a larger effect. The dosage that showed the largest and most significant effect was used in the intervention protocol, which is to conduct the intervention twice a day for 2 weeks.

Acupressure group

In this group, we use five acupoints: Fengchi (GB20), Baihui (GV20), Shenmen (HT7), Niguan (PC6) and Yintang (EX-HN3). The researchers first identify the acupoints; the acupoint identification method in this study is based on two textbooks [38,39] with complete agreement from the expert panel. The researchers then apply pressure on the acupoints, following a light-strong-light pattern. They increase the pressure gradually until it reaches the optimal level, sustain the pressure at the optimal level for 3 minutes, gradually decrease it after 3 minutes and finish by kneading the pressed acupoints. The optimal pressure is defined by experiencing the Deqi sensation (that is, soreness, numbness, distention, heaviness) [40]. The optimal pressure to achieve the Deqi sensation differs among individuals. The sensation can be confirmed by asking the participants and observing their behavior (for example, frowning, withdrawing). When the pressure increases to a level where the Deqi sensation begins to be obviously felt by the participants or observed by the interventionist, the level of pressure is regarded as optimal.

Yintang (EX-HN3) is first pressed for 3 minutes. Baihui (GV20) and Fengchi (GB20) are then pressed simultaneously for another 3 minutes. Finally, Neiguan (PC6) and Shenmen (HT7) are pressed simultaneously for the last 3 minutes. For the bilateral acupoints (that is, GB20, PC6, HT7), the acupoints on one side are pressed in each session and they are pressed alternatively along sessions. Each acupressure session lasts for 9 minutes. Acupressure is performed twice a day, 5 days a week (from Monday to Friday) for 2 weeks. A course of acupressure consists of 20 sessions and lasts for 2 weeks.

Sham-acupressure group

In this group, five non-acupoints are used as controls. A non-acupoint is defined as a point on the body not falling on the acupoints depicted in the two TCM reference books [38,39] and agreed by the members of the expert panel. The five non-acupoints are the root of the nasal bone (point 1), the olecranon of the ulna (point 2), the ulnar styloid process (point 3), the medial malleolus (point 4), and the head of the fibula (point 5). Pressure is applied on the five non-acupoints in the same way as in the AG. Point 1 is first pressed for 3 minutes. Points 2 and 3 are next pressed simultaneously for another 3 minutes. Finally, points 4 and 5 are pressed simultaneously for the last 3 minutes. For the bilateral points (that is, points 2, 3, 4, and 5), the points on one side are pressed in each session and they are pressed alternatively

along sessions. The intervention dose and duration are the same as in the AG. The participants in this group receive a free course of acupressure sessions, identical to the one stipulated in the AG, after completing the study.

Usual-care group

In this group, participants receive no acupressure-related intervention. They receive a free course of acupressure sessions, identical to the one stipulated in the AG, after completing the study.

Outcome measurement

The primary outcome in this study is the change of agitation (that is, CMAI score), and the secondary outcome is the change in stress (measured by salivary cortisol concentration). The outcomes will be measured at the baseline (T0), the week immediately after completion of the intervention (T1), 2 weeks after completion of the intervention (T2), and 6 weeks after completion of the intervention (T3). The measurement at T1 aims to examine the immediate effect after the intervention, that at T2 aims to examine the peak effect, and that at T3 aims to examine the delayed effect. The decision to use the measurement interval of T2 and T3 was based on the result of the pilot study [32], where weekly repeated measurement showed that the effect of acupressure peaked at the time point 2 weeks after the completion of intervention and diminished to very close to baseline at the time point 6 weeks after the completion of intervention.

Training and quality control

All research personnel, those conducting the intervention, and data collectors must attend an 8-hour training course consisting of one lecture and two skills workshops provided by two of the six members of the TCM expert panel. This training is intended to ensure that they comply with the research protocol. All personnel conducting the intervention have to pass a skill examination administered by one of the six members of the TCM expert panel. The test contents included correct identification of the acupoints (for example, skills on identifying landmarks and the Deqi sensation) and acupressure techniques (for example, skills on sustaining the pressure by fingers). The test was performed on both the elderly volunteers and the trainer (that is, one of the six members of the TCM expert panel). The interventionist could only pass the test when the skills were observed by the trainer to be up to standard and the pressure felt by both the elderly volunteer and the trainer to be optimal (that is, experience the Deqi sensation sustainably for 3 minutes) as depicted in the protocol. To prevent fatigue, one interventionist was assigned to conduct acupressure for less than 10 sessions in a

whole day and adequate rest time between sessions was provided. All data collectors and research assistants have to pass the skill examination stipulated by the researchers before they can become involved in this study. The training content for the personnel conducting the intervention strictly followed the intervention protocol of the study, with complete agreement by the expert panel. The training content for data collection made reference to the original instruction manual of the related instruments [34,41].

In order to control the quality of the intervention and data collection, all the data collectors and those conducting the intervention have to attend a separate skill evaluation provided to the research team monthly. There are also on-site visits once to each site to monitor the skill of the data collectors and those conducting the intervention. Dropout, withdrawal, undelivered intervention and uncollected data are recorded until completion of the study.

Safety and adverse events

All adverse events (for example, unfavorable or unexpected signs and symptoms after the treatment) are monitored. Regular meetings are held among the research team and the RCH staff in order to review the trial protocol and participant safety, and to explore possible adverse events. Participants who experience suspected adverse events are excluded from the study after discussion among the research team, RCH staff and the family. If there is clear evidence of any threat to the safety of the participant, the trial will be terminated.

Ethics review and informed consent

The study protocol was reviewed and approved by the Human Subjects Ethics Sub-committee of The Hong Kong Polytechnic University (HSEARS20120920001). In the recruitment phase, before the randomization, all the next-of-kin of subjects screened to be eligible are informed of the details of the study, including intervention and data collection procedures, potential risk and benefits. All eligible subjects are likewise informed of the same details. The subjects and the next-of-kin are clearly told about the equal chance of allocation to any one of the three groups before signing the informed consent. Subjects are recruited when 1) they sign the written informed consent (if they are sufficiently cognitively sound) or assent to participate (that is, nodding, verbalizing, or not rejecting when acupressure is performed on them), and 2) the next-of-kin sign the written proxy consent [42]. Due to the principle of blinding, only the participants allocated to the usual-care group will be told to wait for their free compensatory acupressure treatments after completion of the study. The group allocation status will be strictly concealed to the participants, next-of-kin, data

collectors, and nursing home staff throughout the study period. The group allocation will only be revealed after completion of the study.

Statistical methods

Sample size estimation

To estimate the sample size using G*Power® [43], with assumptions (that is, $\alpha = 0.05$, power = 0.8, three groups), estimated effect size (that is, $f = 0.27$) and attrition rate (that is, 10%) from the pilot study [32] and the previous similar studies [26,27], the total number of samples needed in a randomized controlled trial to demonstrate a significant mean difference among the three groups is 99. There will therefore be 33 participants in each group.

Analysis

Data analysis will be performed by a statistician blinded to the whole trial process using IBM SPSS Statistics 20 software [44]. The level of significance will be reported at $P < 0.05$. Both per-protocol and intention-to-treat analysis will be used in order to provide more information on the effect of the intervention, considering possible confounders such as non-compliance, protocol deviations and withdrawal [45]. The per-protocol population is defined as participants who completed the study without major protocol violation (for example, who received more than 80% of the acupressure sessions). The intention-to-treat population is defined as participants who are randomized into groups after the collection of baseline data. Demographic and clinical data will be analyzed at baseline to measure the balance among the three groups. The results will be described by mean and standard deviation for continuous data, and by frequency and percentage for categorical data. The general estimated equation model will be used to compare the effects among groups and time points.

Discussion

The results of this study will primarily answer the question whether acupressure demonstrates a significant effect in a tightly controlled trial (with maximum possible blinding and stringent control of the intervention implementation fidelity). One of the key active components of acupressure, differentiating it from other manipulative therapies (for example, massage, therapeutic touch), is the activation of acupoints. This study first provides a sham-acupressure group to compare the efficacy difference of acupressure between tactile stimulation and acupoint stimulation. This study uses a relatively shorter intervention duration. A shorter duration of therapy may favor greater compliance with the intervention in the clinical application. This study is the first to use a bio-marker (that is, salivary cortisol) and the extent of

the use of psychotropic drugs to track the outcome of the intervention. These may provide a more objective comparison of effects. Finally, this study is also the first to examine the delayed effect of the intervention. This may also provide a reference for clinical application.

Trial status

The trial is currently recruiting participants.

Abbreviations

AG: acupressure group; CMAI: Cohen-Mansfield Agitation Inventory; PWD: people with dementia; RCH: residential care home; TCM: traditional Chinese medicine.

Competing interests

The authors declare that they have no competing interests.

Authors' contributions

RYCK and CKYL contributed to the study protocol design and coordination. MCPL carried out the role of consultant on the TCM theoretical input, acupressure protocol design, and salivary cortisol collection and analysis. RYCK and CKYL sought funding (for the pilot study part) and ethical approval. RYCK drafted the manuscript. All authors contributed to further writing. All authors read and approved the final manuscript.

Acknowledgement

The main study part was partly funded by the School of Nursing, The Hong Kong Polytechnic University, under the postgraduate student research fund. The pilot study part of the study was funded by the Sigma Theta Tau International Nursing Honor Society, under the research grant category of Small Grant in 2012.

Author details

¹School of Nursing, The Hong Kong Polytechnic University, Hong Kong, China. ²Department of Rehabilitation Sciences, The Hong Kong Polytechnic University, Hong Kong, China.

Received: 24 April 2014 Accepted: 8 October 2014

Published: 27 October 2014

References

1. Cohen-Mansfield J, Billig N: **Agitated behaviors in the elderly I. A conceptual review.** *J Am Geriatr Soc* 1986, **34**:711–721.
2. Rosen J, Burgio L, Kollar M, Cain M, Allison M, Fogleman M, Michael M, Zubenko GS: **A user-friendly instrument for rating agitation in dementia patients.** *Am J Geriatr Psychiatry* 1994, **2**:52–59.
3. American Psychiatric Association: **Practice guideline for the treatment of patients with Alzheimer's disease and other dementias, second edition.** *Am J Psychiatry* 2007, **164**:5–56.
4. Finkel S: **Introduction to behavioral and psychological symptoms of dementia.** *Int J Geriatr Psychiatry* 2000, **15**(Suppl 3):2–4.
5. Kales HC, Gitlin LN, Lyketsos CG: **Management of neuropsychiatric symptoms of dementia in clinical settings: recommendations from a multidisciplinary expert panel.** *J Am Geriatr Soc* 2014. doi:10.1111/jgs.12730. Epub 2014 Mar 17.
6. Cohen-Mansfield J, Libin A: **Assessment of agitation in elderly patient with dementia: correlations between informant rating and direct observation.** *Int J Geriatr Psychiatry* 2004, **19**:881–891.
7. Ballard CG, Gauthier S, Cummings JL, Brodaty H, Grossberg GT, Robert P, Lyketsos CG: **Management of agitation and aggression associated with Alzheimer disease.** *Nat Rev Neurol* 2009, **5**:245–255.
8. Ikeda M, Fukuhara R, Shigenobu K, Hokoishi K, Maki N, Nebu A, Komori K, Tanabe H: **Dementia associated mental and behavioural disturbances in elderly people in the community: findings from the first Nakayama study.** *J Neurol Neurosurg Psychiatry* 2004, **75**:146–148.
9. Craig D, Mirakhor A, Hart DJ, McLroy SP, Passmore AP: **A cross-sectional study of neuropsychiatric symptoms in 435 patients with Alzheimer's disease.** *Am J Geriatr Psychiatry* 2005, **13**:460–468.
10. Selbaek G, Kirkevold Ø, Engedal K: **The prevalence of psychiatric symptoms and behavioral disturbances and the use of psychotropic**

- drugs in Norwegian nursing homes. *Int J Geriatr Psychiatry* 2007, **22**:843–849.
11. Wetzels RB, Zuidema SU, de Jonghe JFM, Verhey FRJ, Koopmans RTCM: **Course of neuropsychiatric symptoms in residents with dementia in nursing homes over 2-year period.** *Am J Geriatr Psychiatry* 2010, **18**:1054–1065.
 12. Samus QM, Rosenblatt A, Steele C, Baker A, Harper M, Brandt J, Mayer L, Rabins PV, Lyketsos CG: **The association of neuropsychiatric symptoms and environment with quality of life in assisted living residents with dementia.** *Gerontologist* 2005, **45**(Suppl 1):19–26.
 13. Hurt C, Bhattacharyya S, Burns A, Camus V, Rossella L, Marriott A, Nobili F, Robert P, Tsolaki M, Vellas B, Verhey F, Byrne EJ: **Patient and caregiver perspectives of quality of life in dementia: an investigation of the relationship to behavioural and psychological symptoms in dementia.** *Dement Geriatr Cogn Disord* 2008, **26**:138–146.
 14. Suzuki M, Kurata S, Yamamoto E, Makino K, Kanamori M: **Impact of fall-related behaviors as risk factors for falls among the elderly patients with dementia in a geriatric facility in Japan.** *Am J Alzheimers Dis* 2012, **27**:439–446.
 15. Kirkevold O, Sandvik L, Engedal K: **Use of constraints and their correlates in Norwegian nursing homes.** *Int J Geriatr Psychiatry* 2004, **19**:980–988.
 16. Sink KM, Holden KF, Yaffe K: **Pharmacological treatment of neuropsychiatric symptoms of dementia: a review of the evidence.** *JAMA* 2005, **293**:596–608.
 17. Matsumoto N, Ikeda M, Fukuhara R, Shinagawa S, Ishikawa T, Mori T, Toyota Y, Matsumoto T, Adachi H, Hirono N, Tanabe H: **Caregiver burden associated with behavioral and psychological symptoms of dementia in elderly people in the local community.** *Dement Geriatr Cogn Disord* 2007, **23**:219–224.
 18. Miyamoto Y, Tachimori H, Ito H: **Formal caregiver burden in dementia: impact of behavioral and psychological symptoms of dementia and activities of daily living.** *Geriatr Nurs* 2010, **31**:246–253.
 19. Weaver MT: **Acupressure: an overview of theory and application.** *Nurse Pract* 1985, **10**:38–42.
 20. Birch S, Felt RL: *Understanding Acupuncture*. London: Churchill Living Stone; 1999.
 21. Lu AP, Jia HW, Xiao C, Lu QP: **Theory of traditional Chinese medicine and therapeutic method of diseases.** *World J Gastroenterol* 2004, **10**:1854–1856.
 22. Moyer CA, Seefeldt L, Mann ES, Jackley LM: **Does massage therapy reduce cortisol? A comprehensive quantitative review.** *J Bodyw Mov Ther* 2011, **15**:3–14.
 23. Remington T: **Calming music and hand massage with agitated elderly.** *Nurs Res* 2002, **51**:317–323.
 24. Labrique-Walusis F, Keister KJ, Russell AC: **Massage therapy for stress management: implications for nursing practice.** *Orthopedic Nursing* 2010, **29**:254–257.
 25. Woods DL, Dimond M: **The effect of therapeutic touch on agitated behavior and cortisol in persons with Alzheimer's disease.** *Biol Res Nurs* 2002, **4**:104–114.
 26. Yang MH, Wu SC, Lin JG, Lin LC: **The efficacy of acupressure for decreasing agitated behavior in dementia: a pilot study.** *J Clin Nurs* 2007, **16**:308–315.
 27. Lin LC, Yang MH, Kao CC, Wu SC, Tang SH, Lin JG: **Using acupressure and Montessori-based activities to decrease agitation for residents with dementia: a cross-over trial.** *J Am Geriatr Soc* 2009, **57**:1022–1029.
 28. Yang MH: **The effectiveness of aroma-acupressure in improving the problem behaviors of dementia.** In *Proceedings of the 17th East Asian Forum of Nursing Scholars: 20–21 February 2014; Manila*. Manila: University of Philippines; 2014:86.
 29. Moyle W, Johnson AN, O'Dwyer ST: **Exploring the effect of foot massage on agitated behaviors in older people with dementia: a pilot study.** *Australas J Ageing* 2011, **30**:159–161.
 30. Woods DL, Beck C, Sinha K: **The effect of therapeutic touch on behavioral symptoms and cortisol in persons with dementia.** *Forsch Komplementmed* 2009, **16**:181–189.
 31. Hong Kong Social Welfare Department. [http://www.swd.gov.hk/en/index/site_pubsvc/page_elderly/sub_residential/]
 32. Kwan RYC, Lai CKY: **The effect of acupressure at various dosages for managing agitation on people with dementia in nursing home: a pilot study.** In *Proceedings of the 17th East Asian Forum of Nursing Scholars: 20–21 February 2014; Manila*. Manila: University of Philippines; 2014:90.
 33. **Randomization.com.** [http://www.randomization.com/]
 34. Cohen-Mansfield J: *Instruction Manual for the Cohen-Mansfield Agitation Inventory (CMAI)*. Maryland: The Research Institute of the Hebrew Home of Greater Washington; 1991.
 35. Craig P, Dieppe P, Macintyre S, Michie S, Nazareth I, Petticrew M: **Developing and evaluating complex interventions: the new Medical Research Council guidance.** *BMJ* 2008, **337**:a1655.
 36. Keeney S, Hasson F, McKenna HP: **A critical review of the Delphi technique as a research methodology for nursing.** *Int J Nurs Stud* 2001, **38**:195–200.
 37. Kwan RYC, Lai CKY, Leung MCP: **The development of an acupressure protocol for managing agitation in people with dementia.** In *Proceedings of the 16th East Asian Forum of Nursing Scholars: 21–22 February 2013*. Thailand: Bangkok Mahidol University; 2013:406.
 38. WHO Regional Office for the Western Pacific: *WHO Standard Acupuncture Point Locations in the Western Pacific Region*. Manila: WHO press; 2008.
 39. Cheng X: *Chinese Acupuncture and Moxibustion*. Beijing: Foreign Language Press; 2003.
 40. Yang XY, Shi GX, Li QQ, Zhang ZH, Xu Q, Liu CZ: **Characterization of deqi sensation and acupuncture effect.** *Evid-Based Compl Alt* 2013, **319734**:7. doi:10.1155/2013/319734.
 41. Salimetrics: **High Sensitivity Salivary Cortisol Enzyme Immunoassay Kit.** [http://www.salimetrics.com/assets/documents/1-3102.pdf]
 42. Karlawish JHT, Knopman D, Clark CM, Morris JC, Marson D, Whitehouse PJ, Kawas CH: **Informed consent for Alzheimer's disease clinical trials: a survey of clinical investigators.** *IRB* 2002, **24**:1–5.
 43. Faul F, Erdfelder E, Lang AG, Buchner A: **G*Power 3: A flexible statistical power analysis program for the social, behavioral, and biomedical sciences.** *Behav Res Methods* 2007, **39**:175–191.
 44. IBM Corp: *Released 2011. IBM SPSS Statistics for Windows, Version 20.0*. Armonk, NY: IBM Corp.
 45. Gupta SK: **Intention-to-treat concept: a review.** *Perspect Clin Res* 2011, **2**:109–112.

doi:10.1186/1745-6215-15-410

Cite this article as: Kwan et al.: Acupressure for agitation in nursing home residents with dementia: study protocol for a randomized controlled trial. *Trials* 2014 **15**:410.

Submit your next manuscript to BioMed Central and take full advantage of:

- Convenient online submission
- Thorough peer review
- No space constraints or color figure charges
- Immediate publication on acceptance
- Inclusion in PubMed, CAS, Scopus and Google Scholar
- Research which is freely available for redistribution

Submit your manuscript at
www.biomedcentral.com/submit

