



REVIEW

Open Access

# The HIV-1 pandemic: does the selective sweep in chimpanzees mirror humankind's future?

Natasja G de Groot<sup>1\*</sup> and Ronald E Bontrop<sup>1,2</sup>

## Abstract

An HIV-1 infection progresses in most human individuals sooner or later into AIDS, a devastating disease that kills more than a million people worldwide on an annual basis. Nonetheless, certain HIV-1-infected persons appear to act as long-term non-progressors, and elite control is associated with the presence of particular MHC class I allotypes such as HLA-B\*27 or -B\*57. The HIV-1 pandemic in humans arose from the cross-species transmission of SIV<sub>cpz</sub> originating from chimpanzees. Chimpanzees, however, appear to be relatively resistant to developing AIDS after HIV-1/SIV<sub>cpz</sub> infection. Mounting evidence illustrates that, in the distant past, chimpanzees experienced a selective sweep resulting in a severe reduction of their MHC class I repertoire. This was most likely caused by an HIV-1/SIV-like retrovirus, suggesting that chimpanzees may have experienced long-lasting host-virus relationships with SIV-like viruses. Hence, if natural selection is allowed to follow its course, prospects for the human population may look grim, thus underscoring the desperate need for an effective vaccine.

**Keyword:** AIDS, Chimpanzee, HIV-1, HLA, Human, MHC, Repertoire reduction, SIV<sub>cpz</sub>, Zoonosis

## Review

### AIDS: facts and figures

Acquired immunodeficiency syndrome (AIDS) is caused by the human immunodeficiency virus type 1 (HIV-1) and poses a major threat to human health. At present, over thirty million individuals are infected worldwide, and more than twenty five million people have died from AIDS since the beginning of the pandemic (UNAIDS 2011). Based on genetic characteristics, the virus strains can be clustered into different groups designated M, N, O and P. HIV-1 group M is responsible for the vast majority of infections recorded in human individuals globally [1,2]. Thanks to the currently available anti-retroviral (AR) drugs, the number of people dying yearly from AIDS reached a plateau around 2004, and the number has even begun to decline (UNAIDS 2011). However, it is important to mention that highly active anti-retroviral therapy (HAART) does not eradicate HIV-1 [3], and several studies have demonstrated that discontinuation of HAART may result in a rapid viral rebound [4-7]. Moreover, AR therapy carries with it high costs, resulting in only a

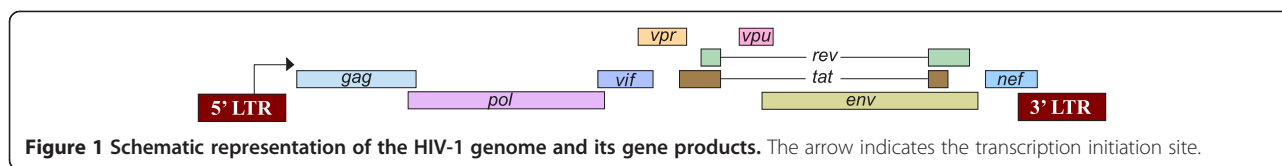
limited number of HIV-1-infected individuals having access to it. Especially in developing countries, where most of the infected individuals live, AIDS is still a prominent health problem. Another worry is that sooner or later the virus may develop resistance to these drugs [8], and the spread of drug-resistant HIV-1 strains would be devastating. Therefore, a series of low-cost drugs and, more optimistically, an efficacious vaccine able to protect against infection are urgently needed.

### HIV-1 in a nutshell: its genome and infection routes

The genome of HIV-1 is relatively small, approximately 10 kilobases, and encodes a limited number of gene products (Figure 1). This retrovirus belongs to the group of lentiviruses. Like most retroviruses, the HIV-1 genome contains the three functional proteins Gag, Pol, and Env, which are essential for the construction of the virus particle [9]. In addition, lentiviral genomes encode a number of regulatory (Tat and Rev) and accessory genes (Vif, Vpr, Vpu, and Nef). The Tat and Rev proteins are essential for replication of the virus. The accessory proteins are attached to viral messenger RNA, but they are not required for replication of the virus *in vitro*. However, *in vivo* these proteins are necessary for the replication and virulence of the virus [10].

\* Correspondence: [groot@bprc.nl](mailto:groot@bprc.nl)

<sup>1</sup>Department of Comparative Genetics and Refinement, Biomedical Primate Research Centre, Lange Kleiweg 161, 2288 GJ Rijswijk, The Netherlands  
Full list of author information is available at the end of the article



**Figure 1** Schematic representation of the HIV-1 genome and its gene products. The arrow indicates the transcription initiation site.

HIV-1 possesses specific characteristics that hamper or have hampered the development of broadly efficacious and efficient anti-retroviral drugs and vaccines. On the one hand, the virus can cause a persistent infection and hide in an inactive form in cellular reservoirs. On the other hand, it can replicate quickly, and – depending on the copy number present in one individual – may produce  $10^9$  to  $10^{10}$  particles per day [11,12]. Moreover, the genome of HIV-1 encodes an error-prone reverse transcriptase characterized by a high mutation rate (approximately  $3 \times 10^{-5}$  per nucleotide/replication cycle) [13]. This, in combination with a relatively small genome size and the high viral production rate within a given individual, may ultimately result in the establishment of a virus swarm. There is also the risk of emergence of new recombinant strains as multiple HIV-1 viruses, which are prone to exchange genetic material, infect a single cell. Hence, a high mutation rate in concert with recombination provides the biological ability for HIV-1 to escape the immune recognition/control of its host.

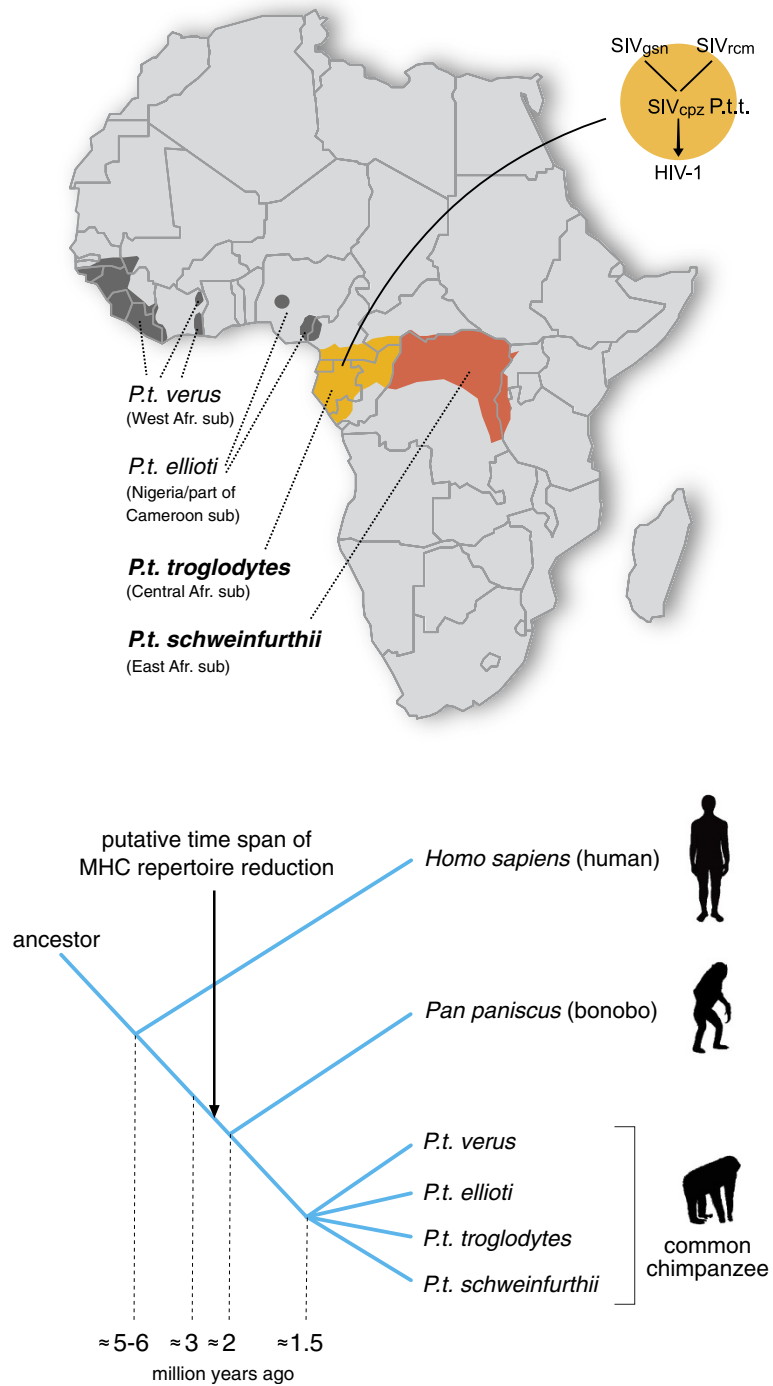
HIV-1 enters the human body via mucosal sites, blood-blood contact, or breast milk [14]. After entry, the virus either directly infects  $CD4^+$  T cells, is recruited by dendritic cells (DC), or is taken up by macrophages. The latter two cell types act as a kind of Trojan horses, and transport HIV-1 through different layers of epithelial cells to the lymphoid tissues, where they can transfer the virus to  $CD4^+$  T cells [15,16]. DCs can either internalize HIV-1 into endosomes, and the cell-surface molecule that is used by the virus for entry into the cell is the C-type lectin receptor DC-SIGN [17], or they can recruit HIV-1 virions to their endosomal compartment, where the virions accumulate at regions that come into contact with neighboring T cells (referred to as the infectious synapse) [18]. Macrophages may phagocytize HIV-1, and can either function as a reservoir for long-term persistence of the virus or can be responsible for the transport and dissemination of the virus. The “primary” non-syncytium-inducing (NSI) HIV-1 viruses mainly infect  $CD4^+$  memory T cells that express CC-chemokine receptor-5 (CCR5). Later in the course of the infection, the NSI strains can switch to a syncytium-inducing (SI) phenotype, which can infect T cells by using the C-X-C-chemokine receptor-4 (CXCR4) as co-receptor. This switch is associated with a loss of sensitivity to chemokines (like RANTES, and MIP-1 $\alpha$  and  $\beta$ ), a rapid decrease in  $CD4^+$  T cells, and progression towards AIDS [19]. Moreover, an infection of memory  $CD4^+$  T cells that revert back to a resting state ensues as well, resulting in a

dormant stage of the virus that is undetectable by the host's immune system [20]. In essence, HIV-1 infection and its subsequent manipulations take place at the heart of the immune system.

### Zoonotic infections: what may happen if we open Pandora's box

More than 40 African non-human primate species are infected naturally with various simian immunodeficiency virus (SIV) strains, but progression towards AIDS is rarely observed [21,22]. From among these natural primate hosts, the SIV infection has been most thoroughly studied in three species, sooty mangabeys, African green monkeys, and mandrills, and has led to the insight that non-pathogenicity need not be linked to effective immune control. Apparently, many of the species have co-evolved with SIV infections, and have found ways to manage/control it. These non-human primates, however, are potential reservoirs for viruses that could be spread among related species. One example of such a zoonotic transmission is provided by sooty mangabeys (*Cercocebus atys*). This species, infected naturally with a SIV strain (SIV<sub>sm</sub>), is considered to represent the origin of the HIV-2 infection in humans, causing an AIDS-like disease [23]. The infection in humans is mostly confined to the West African territory, and indeed overlaps with the natural habitat of sooty mangabeys.

Chimpanzees (*Pan troglodytes*), humankind's closest living relative, can also be infected with SIV [24]. Based on the geographic distribution as well as on morphological and genetic data, chimpanzees have been divided into four different subspecies/populations sharing a common ancestor approximately 1.5 million years ago [25-27], and incidences of natural SIV<sub>cpz</sub> infection have been recorded in contemporary animals from at least two of the four subspecies (Figure 2). These SIV<sub>cpz</sub>-strains appear to have a mosaic genome, consisting of gene segments from different types of SIV strains obtained from distinct Old World monkey species [28]. This suggests that chimpanzees have acquired their types of SIV infections by predation on Old World monkeys sharing the same habitat. In turn, the different HIV-1 groups M, N, O and P, have arisen from at least four separate introductions of SIV into the human population. The initiator of the human pandemic (HIV-1 group M) is the SIV<sub>cpz</sub> strain derived from chimpanzees of the Central-African subspecies (*Pan troglodytes troglodytes*) [29] (Figure 2), and the HIV-1 group N also arose from an SIV<sub>cpz</sub> strain from this species. The HIV-1 groups



**Figure 2 Map of the African continent, highlighting habitats of the four different chimpanzee subspecies.** Populations that show evidence of contemporary natural infections with SIV<sub>cpz</sub> strains are *Pan troglodytes troglodytes* (light orange) and *P.t. schweinfurthii* (dark orange). Superimposed is a diagram illustrating the cross-species transmission events that led to the emergence of HIV-1 group M, the initiator of the human pandemic [28]. The lower panel in the figure illustrates the speciation events in the homo-pan lineage. The arrow indicates the putative time span of the MHC repertoire reduction in the pan lineage.

O and P most likely originated from gorillas ( $SIV_{gor}$ ) [30,31], in which there is an indication that *P.t.t.* animals are the source of  $SIV_{gor}$  [32].

### Chimpanzees and AIDS

Apart from humans, chimpanzees are one of the non-human primate species that is susceptible to infection with HIV-1. Recently, it has been shown that pig-tailed macaques can also be infected through a modified HIV-1 strain that only differs in the *vif* gene [33,34]. In the past, a substantial number of West-African chimpanzees (*P.t.verus*) were experimentally infected with different HIV-1 strains, but most of these animals seem to be relatively resistant to developing AIDS [35,36]. These experiments were conducted before it was known that HIV-1 was derived from a zoonotic transmission of a virus that has its roots in a chimpanzee reservoir. In the late 1980s and early 1990s, the first chimpanzees to be infected naturally with an HIV-1-related lentivirus were discovered [37-39]. Additional natural  $SIV_{cpz}$  infections in captive and wild-living chimpanzees were described later [40,41]. Some of these chimpanzees were kept under close surveillance for long periods, but signs of an AIDS-like disease were not seen. Moreover, transmission of one of the viruses to West-African chimpanzees (animals in which natural infection with  $SIV_{cpz}$  is not observed) also did not result in the progression to AIDS [42]. Recently, population analyses have shown that wild-ranging East-African chimpanzees (*P.t.schweinfurthii*) experience natural infections with  $SIV_{cpz}$ . For one of the populations, evidence of AIDS-like symptoms has been documented [43], and AIDS-related symptoms have also been described for a naturally infected Central-African chimpanzee [44]. In addition to these observations of AIDS in  $SIV_{cpz}$ -related infections, there is one case documenting that chimpanzees can develop AIDS after experimental infection with HIV-1 [45]. This chimpanzee of West-African origin was infected with three different HIV-1 isolates. The animal eventually developed AIDS, and subsequent analysis showed that a recombinant HIV-1 strain had emerged. Three other chimpanzees that were afterwards infected with this recombinant strain all developed signs of AIDS-like disease [46]. This set of experiments shows that viruses that have been edited in the human population, and that are re-introduced into their original host species, can cause AIDS. Thus, escape from immune control in chimpanzees is possible in exceptional cases, even within a species considered to be relatively resistant.

### Control of AIDS development in humans: an introduction to the MHC

In HIV-1-infected human cohorts, certain individuals do not progress towards AIDS. Some of these long-term non-progressors (LTNP)/elite controllers (ECs) have been infected for more than two decades [47], and their

situation appears to resemble that of HIV-1-infected chimpanzees in terms of their relative resistance to developing AIDS. The LTNP/EC status in humans is strongly associated with the presence of particular major histocompatibility complex (MHC) class I molecules, such as HLA-B\*27:05 and -B\*57:01 [48-54].

The MHC plays a central role in the induction of adaptive immune responses, and encodes two clusters of cell-surface proteins. In humans, these molecules are designated HLA-A, -B, and -C (class I cluster), and -DP, -DQ, and -DR (class II cluster), and almost all these genes display abundant levels of polymorphism [55]. MHC class I antigens are expressed on virtually all nucleated cells, and generally present peptides of 8-10 amino acids in length. One of the biological functions of MHC class I molecules is to sample degraded peptide fragments from pathogens that are able to establish intracellular infections. In most cases, such peptides are derived from viruses trying to manipulate the intracellular machinery of the host cell in favor of their own replication purposes. MHC class II molecules, on the other hand, display differential tissue distribution and usually bind substantially longer peptides. They sample degraded peptide fragments from pathogens that are establishing extra-cellular infections, or that have life stages that are taking place outside of the host cell. In the case of an intracellular infection, the immune system will try to kill the target cell by inducing apoptosis-mediated lysis by  $CD8^+$  cytotoxic T cells (CTL). Extra-cellular infections are usually eliminated by antibodies that are generated by B cells under the control of  $CD4^+$  T helper cells.

In order to initiate an immune response, each individual will present a range of antigenic peptides as dictated by their unique HLA repertoire. Thus, MHC polymorphism warrants that many individuals within a given population have the capacity to generate unique adaptive immune responses to eliminate infections. In other words, MHC polymorphism minimizes the chance that a given pathogen will eliminate an entire population. Several pathogens have evolved different ways to interfere with the MHC class I and II antigen presentation pathways in order to avoid immune recognition [56-59]. Indeed, it has been suggested that in human populations exposed to HIV-1 there is enrichment for particular HLA specificities [60,61].

### The MHC and resistance to the development of AIDS in chimpanzees

*Grosso modo*, humans and chimpanzees share the same MHC class I and II loci. However, chimpanzees possess an additional oligomorphic locus designated *Patr-AL* (*A-like*), which is characterized by a differential haplotype distribution and low expression levels [62,63]. An overview of the reported number of alleles for each locus is provided (Table 1). With regard to lineages, in comparison to humans, chimpanzees have a reduced MHC class I

**Table 1 Number of alleles detected for Mhc class I and II loci in humans (HLA) and chimpanzees (Patr)**

	Locus	HLA	Patr
<b>Mhc class I</b>	A	2188	33
	B	2862	57
	C	1746	31
	E	11	2
	F	22	1
	G	50	1
	AL	0	5
<b>Mhc class II</b>	DPA1	36	3
	DPB1	159	29
	DQA1	49	7
	DQB1	193	10
	DRA	7	2
	DRB	1386	79
<b>#Individuals analyzed</b>		>>	≈100

Data were retrieved from the databases [www.ebi.ac.uk/imgt/hla](http://www.ebi.ac.uk/imgt/hla) [70] and [www.ebi.ac.uk/ipd/mhc/nhp](http://www.ebi.ac.uk/ipd/mhc/nhp) [71].

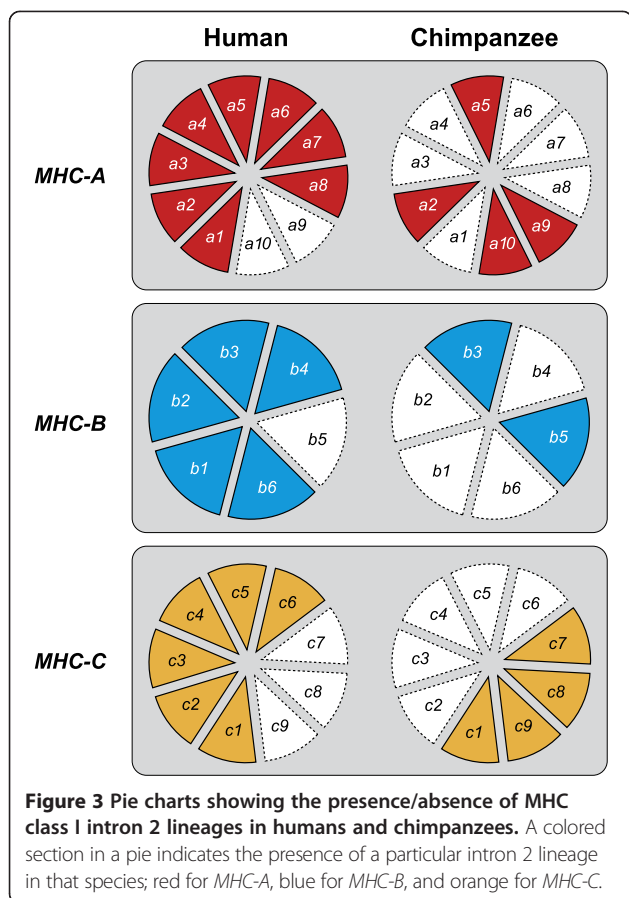
repertoire. The very first indications that chimpanzees may lack the evolutionary equivalents of particular *HLA* lineages became evident in serological studies [64]. In humans, the *HLA-A* locus alleles are divided into two lineages comprising six families (Table 2) [65,66], and the experiments of van Rood *et al.* [64] showed that chimpanzees lack the *HLA-A2* related serotypes. Subsequent molecular studies suggested that chimpanzees might only possess the equivalents of the *HLA-A1/A3/A11/A30* family [67]. Although the number of animals tested in this initial study was relatively small, the outcome was unexpected. Humans and chimpanzees are each other's closest living relatives, and they shared a common ancestor about 5 million years ago [68]. Thus, the most logical explanation would be that humans and chimpanzees share for the *A* and *B* loci the same lineages, since they were inherited in a trans-species mode of evolution [69].

As a follow-up to McAdam's study [67], the MHC class I repertoire of a pedigreed West-African chimpanzee colony comprising more than 30 wild-caught founder animals was analyzed. Again, only orthologs of the *HLA-A1/A3/A11/A30* family were encountered [72]. Moreover, MHC analyses of West-African chimpanzees by other

**Table 2 Subdivision of the HLA-A locus members into lineages and families**

Lineage	Family
<b>A2</b>	<i>HLA-A2</i>
	<i>HLA-A10</i>
	<i>HLA-A19</i>
<b>A3</b>	<i>HLA-A1/A3/A11/A30</i>
	<i>HLA-A9</i>
	<i>HLA-A80</i>

research teams, and of small numbers of Central- and East-African chimpanzees, also provided data indicating only the presence of *HLA-A1/A3/A11/A30* family orthologs [72-76]. Although the results suggest that there was a repertoire reduction at the MHC class I region in chimpanzees, conclusions in this direction should be arrived at cautiously. The presence of one particular omnipresent *HLA-A*-like family in chimpanzees can, in theory, also be explained by convergent evolution. Additionally, the imbalance in sample size between the number of chimpanzees and humans analyzed for their MHC repertoire can hamper an accurate interpretation of the data. For instance, one can argue that particular alleles and/or lineages were missed in chimpanzees due to a limited sample size. In addition, the MHC class I and II gene products of different species/populations may experience different sorts of natural selection, depending on their habitat and on the pathogens that are present. Another viable explanation could be that there was an expansion of the *HLA* class I lineages. To answer such questions, we designed a study that investigated the influence of selection operating on the classical MHC class I loci. This involved the comparison of intron variation of chimpanzee and human MHC class I alleles. The different intron 2 variations observed in both species are clustering into various lineages, of which some are shared (Figures 3 and 4). On the basis of two well-defined populations, the MHC class I intron 2 data regarding twenty-five randomly chosen human Caucasian individuals [77] were compared with the data regarding our twenty-five *P.t.v.* chimpanzees. The  $\chi^2$  statistics showed that the intron 2 variation found in humans is 2.56 times higher (confidence interval (CI) 95% is 0.87-7.55,  $P = 0.07$ ) for the MHC-A locus, and 2.64 times higher (CI 95% is 1.20-5.82,  $P = 0.01$ ) for the B locus [78]. The human cohort used, however, was not typed for the *HLA-C* locus, and therefore we have reanalyzed the data using a different human cohort that is typed at high-resolution level for *HLA-A*, *-B*, and *-C* (random panel IHB). To determine for all three loci whether the number of intron 2 alleles detected in humans is significantly higher as compared to that in chimpanzees, the difference in unique number of alleles ( $\Delta n_e$ ) was calculated by using bootstrap analyses. Additionally, for each locus, the ratio of the number of unique alleles in humans divided by the number of unique alleles in chimpanzees was calculated. The  $\Delta n_e$  and the ratios of unique alleles were considered statistically significant if their confidence interval did not enclose 0 or 1, respectively. The analyses revealed that all three loci show a statistical significant difference for the  $\Delta n_e$  and ratio in humans versus chimpanzees (Table 3). Thus, the approach confirms that chimpanzees indeed experienced a selective sweep targeting the MHC class I repertoire. The repertoire condensation was claimed to predate the (sub)speciation of chimpanzees, as the same



intron lineages are shared between the different populations of chimpanzees, and was calibrated to have happened approximately 2-3 million years ago [78] (Figure 2). This suggests that in the distant past, ancestors of the contemporary chimpanzee populations must have been in close contact with each other, and that a plague may have affected the entire species. The fact that chimpanzees experienced a repertoire reduction in the MHC class I region, and the knowledge that most chimpanzees infected experimentally with HIV-1 are relatively resistant to developing AIDS, resulted in the hypothesis that the ancient repertoire reduction may have been caused by an HIV-1/SIV<sub>cpz</sub>-like or a closely related retrovirus [78].

A successive comparative genomic approach, using microsatellite markers located in the MHC region and markers mapping at a variety of other chromosomes, revealed that both chimpanzees and humans show similar amounts of variation for most of the non-MHC markers. Nonetheless, a significant lower allelic variation for the majority of the markers mapping in the chimpanzee MHC region was documented [79]. These data support the claim that chimpanzees possess a reduced MHC repertoire. Subsequent multi-locus demographic analyses highlighted the fact that chimpanzees experienced a selective sweep that mainly targeted the chromosomal segment carrying the MHC class I region [79].

### The evolution of chimpanzee MIC genes: further substantiation of selection

Activated CD4<sup>+</sup> memory T cells are selectively and rapidly depleted after an HIV-1/SIV infection [80,81]. This cell type is present in abundance in the intestine, but other mucosal surfaces (lung, vagina) that are frequently exposed to environmental pathogens also contain a high percentage of activated lymphocytes [82]. In humans and macaques in particular, the intestine is the prominent site of CD4<sup>+</sup> T-cell depletion during the first few weeks after exposure to HIV-1/SIV [81,83]. The major histocompatibility complex class I chain-related gene (*MIC*) molecules are highly expressed on the gastrointestinal epithelium [84], and the genes encoding these molecules map to chromosome 6 within the MHC region. In humans, seven genes (*MICA* to *MICG*) have been distinguished, though only the *MICA* and *-B* genes produce functional transcripts and display high levels of polymorphism [70]. The molecules are thought to be involved in signaling stress to the immune system.

Chimpanzees appear to have only one functional *MIC* gene (localized near the *Patr-B* locus), which has an intermediate character resembling in part the human *MICA* and *-B* genes. A large ancestral deletion of 95 kb resulted in the birth of a hybrid *Patr-MICA/B* gene [85]. We have investigated *MIC* gene polymorphism in chimpanzees, and found that the *Patr-MICA/B* fusion gene controls only one lineage showing moderate allelic variation [86]. Thus, as compared to humans, chimpanzees have a reduced *MIC* gene repertoire, which is consistent with the selective sweep observed for the *Patr-B* locus. Moreover, the hybrid *MICA/B* gene appears to represent a fixed entity in all chimpanzee (sub)species. This is peculiar, as most other primate species possess haplotypes that carry both *MICA* and *-B* genes. Hence, somewhere during chimpanzee evolution a haplotype with a hybrid *MICA/B* gene was generated, and all other haplotypes carrying *MICA* and *-B* genes have gone missing. As the *MICA/B* gene maps next to the *Patr-B* gene, it is possible that selection on particular *B* alleles favored the preferential selection of this hybrid *MIC* gene by way of a piggyback effect. However, it cannot be excluded that the hybrid *MICA/B* gene itself, or the combination of this gene with particular *Patr-B* alleles, provided a selective advantage.

In humans, *MIC* is the ligand for the NKG2D receptor, which is expressed on natural killer (NK) cells,  $\gamma\delta$  T cells, and particular CD8<sup>+</sup>  $\alpha\beta$  T cells [87]. A cellular “stress” signal, triggered for instance by a viral infection or malignant transformation, may upregulate the expression of *MIC*, which can ultimately lead to an immune response. The *Patr-MICA/B* fusion molecule is recognized by human V $\delta$ 1  $\gamma\delta$  T cells specific for *MICA* and *B*, suggesting a conserved recognition site [88]. In addition, the NKG2D



**Table 3 Difference in the number of unique alleles ( $\Delta n_e$  (95% CI)) and the ratio of unique alleles (95% CI) in humans as compared to chimpanzees for the different MHC class I loci**

Locus	$\Delta n_e$ (95% CI)	Ratio (95% CI)
<i>Mhc-A</i>	4.00 (2.00 - 7.00)	1.80 (1.33 - 2.40)
<i>Mhc-B</i>	5.00 (2.00 - 8.00)	1.63 (1.22 - 2.17)
<i>Mhc-C</i>	6.00 (3.00 - 8.00)	2.25 (1.60 - 3.67)

For the statistical analysis, 50 haplotypes were re-sampled 100,000 times and with replacement, separately for both species. The  $\Delta n_e$  was calculated by subtracting the  $n_e$  of the chimpanzee from the  $n_e$  of the human, and the ratio of unique alleles in the two species was calculated by dividing the  $n_e$  of the human by the  $n_e$  of the chimpanzee. The median was defined as the 50,000<sup>th</sup> value and the lower and upper confidence limits were defined as the 250<sup>th</sup> and 99,750<sup>th</sup> values emanating from the bootstrapping. Calculations were performed using the R statistical package (version 2.15.3).

pair deletion in the CCR5 gene has been observed, and the relative resistance of chimpanzees to developing AIDS after an HIV-1 infection cannot be attributed to this genetic modification [92-94]. Variations in the human 5' cis-regulatory region of CCR5 (5'CCR5) were found to be associated with different transcription levels that influence HIV-1 entry and may affect disease progression [95]. Hence, the human 5'CCR5 haplotype that shows the lowest promoter activity resulting in control of AIDS development is the most common haplotype in chimpanzees [96]. By assuming a wide range of demographic histories, Wooding *et al.* [96] demonstrated that the human 5'CCR5 promoter region experienced balancing selection, and that, in contrast, the chimpanzee equivalent was affected by a selective sweep. This suggests that if the chimpanzee 5'CCR5 promoter region is linked to functional variants that influence progression to AIDS, it may contribute to the relative resistance of chimpanzees to developing AIDS after an HIV-1/SIV<sub>cpz</sub> infection. Corresponding to this finding, MacFie *et al.* [97] demonstrated differential patterns of diversity for the HIV-related loci CCR5, CXCR4, and CX<sub>3</sub>CR1 in three chimpanzee subspecies (West- and Central-African, and Nigeria-Cameroon) [97]. For the CCR5 locus, they showed that it has low levels of diversity for all three subspecies, and this appeared to be tightly centered, as flanking loci displayed normal variation in all subspecies. The results suggest that the CCR5 locus experienced a selective sweep and that this may have predated subspeciation. For the Central-African chimpanzees, natural infections with SIV<sub>cpz</sub> are documented [39], and a selective sweep at the CCR5 locus may be related to recent co-evolution with SIV<sub>cpz</sub>. For the other two subspecies, natural infections with SIV<sub>cpz</sub> are not documented in the contemporary living animals [44,98]. The fact that these subspecies do show evidence for selection at CCR5 could indicate that they were infected with SIV<sub>cpz</sub>-like virus strains in the past, and that infections are rare or absent at present. Alternatively, the entire ancestral chimpanzee population may have been infected with an SIV<sub>cpz</sub>-like

virus, resulting in a selection event at that stage for which the signature still can be measured. Depending on novel infections with SIV<sub>cpz</sub> strains, particular selection forces are still operative.

Different cellular restriction factors, such as tripartite motif protein 5 alpha (TRIM5 $\alpha$ ) and apolipoprotein B mRNA-editing enzyme 3G (APOBEC3G), can target the intracellular replication of HIV-1 [99]. The APOBEC3G gene underwent strong positive selection, and during primate evolution this gene experienced several episodes of adaptations [100]. Polymorphisms in the human APOBEC3G gene have been documented, but its relationship with control of viral replication needs further investigation [101]. The chimpanzee APOBEC3DE, one of the other seven members of the APOBEC family, has potent antiretroviral activity against HIV-1. This is thought to be driven by an ancient lentiviral selective pressure dating back approximately 2 to 6 million years [102], which is consistent with our hypothesis that chimpanzees experienced a selective sweep caused by HIV-1/SIV<sub>cpz</sub>-like or a closely related retrovirus prior to chimpanzee (sub)speciation [78].

In addition, chimpanzees experienced selection on the fourth component (C4) gene of the complement system that maps in the MHC class III region [103]. Most humans possess two copies of the gene, designated C4A and C4B, and both genes are known to display size polymorphism due to the insertion of a complete endogenous retrovirus of 6.3 kb [104]. The long version of the C4A gene is found in humans, orangutans, and a variety of Old World monkeys [103,105]. However, chimpanzees only possess the equivalents of the short versions of the C4A and C4B genes. Since the presence of the long C4A gene predates human and Old World monkey speciation, the equivalent of this gene has most likely been lost during chimpanzee evolution.

Therefore, different research angles provide evidence that chimpanzees, as compared to humans, have experienced selection operating on the MHC and other genomic regions during their evolution. Chimpanzees shared a common ancestor with the bonobo (*Pan paniscus*) approximately 2 million years ago. A recent comparison of the bonobo and chimpanzee genome revealed that in chimpanzees, the MHC region in particular has experienced positive selection [106].

#### **Ancient selective sweep in chimpanzees most likely caused by an SIV-like retrovirus: supporting data from functional studies**

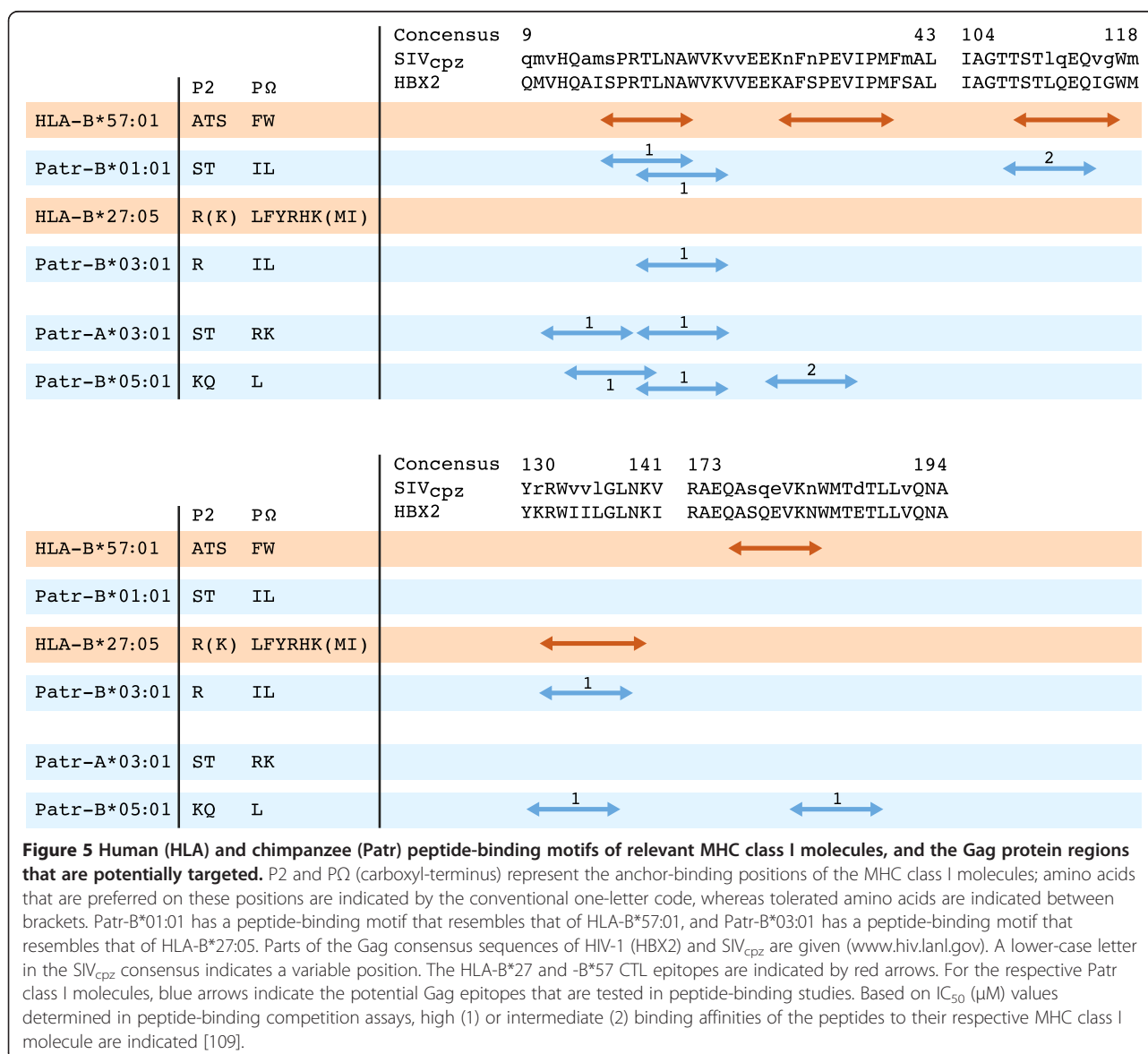
Control of AIDS development in HIV-1-infected human cohorts is strongly associated with the presence of HLA-B \*27:05 and -B\*57:01 [48,52-54,60], and adaptive immune responses to the HIV-1 Gag protein are thought to play an important role in the control of viral replication [107,108].



Hence, the Gag protein was taken as a model system to measure immune responses to this protein in chimpanzees. More specifically, we investigated whether the selective sweep had resulted in the preferential selection of Patr class I allotypes, and, if so, whether these allotypes could target similar HIV-1/SIV Gag regions as do HLA molecules associated with control of AIDS development. Therefore, the peptide-binding motifs of four Patr class I molecules, occurring at high frequency in a thoroughly characterized West-African chimpanzee population, were determined [109]. The obtained motifs were used to scan the HIV-1/SIV<sub>cpz</sub> Gag proteins for potential CTL epitopes, and the relevant peptides were subsequently tested in binding studies. Two of the studied Patr molecules have peptide-binding motifs that resemble those of HLA-B\*27 or -B\*57, and can target similar areas of the HIV-1/SIV<sub>cpz</sub>

Gag protein (Figure 5). In addition, the two other studied allotypes, although divergent in their peptide-binding anchors, also appear to target the conserved areas of the HIV/SIV<sub>cpz</sub> proteome similar to the AIDS-controlling HLA-B\*27 and -B\*57 molecules. Thus, particular human and chimpanzee allotypes share similar qualitative functional characteristics.

Recently, an in silico approach comparing human and chimpanzee MHC class I alleles illustrated that, with regard to the peptide-binding repertoire, the Patr-A molecules show signs of a selective sweep [110]. The Patr-A allotypes, in general, appear to have promiscuous binding profiles, and as a consequence they can target conserved areas of the Gag protein. The chimpanzee-specific Patr-AL molecule has a peptide-binding motif similar to HLA-A\*02 [111]. However, as compared to the classical MHC



class I loci, Patr-AL has distinct characteristics (low expression level and present only on approximately 50% of the chimpanzee MHC haplotypes), and further investigation is needed as to whether this molecule contributes significantly to adaptive immune responses.

In the founder population that we analyzed thoroughly, 94% of the chimpanzees possess at least one of the four Patr class I allotypes studied (Figure 5). Moreover, many chimpanzees were observed to express multiple allotypes, which are able to bind peptides derived from various conserved Gag regions. This has led us to suggest that chimpanzees may have developed a “double-lock” strategy to respond to an HIV-1/SIV<sub>cpz</sub> infection, meaning that the chance of the virus escaping by mutations has been severely diminished. As only four Patr allotypes have been studied at this point, this quantitative aspect of the immune response might become more prominent if more peptide-binding motifs become available. Evaluation of the immune response data of three different HIV-1-infected chimpanzees revealed that the animals displayed broadly reactive CTL responses to conserved epitopes of the Gag protein [109,112,113]. Thus, the functional characteristics of the chimpanzee MHC class I repertoire suggest that the ancient selective sweep was caused by a lentiviral pandemic. The effect of this sweep can still be measured, as most extant chimpanzee populations appear to have a reduced MHC class I repertoire. However, most animals do possess (multiple) allotypes with functional characteristics similar to the AIDS-controlling HLA-B\*27/B\*57 molecules in humans.

There is evidence that the selective sweep or subsequent selection processes must have been more prominent in West-African chimpanzees than in other chimpanzee populations [96,97,114]. Population separation may have influenced this. Moreover, chimpanzees and their ancestors were most likely infected through predating on different monkey species that are infected with disparate types of SIV strains. Thus, depending on the monkey species predated upon, and their respective SIV infection, repertoires could have been edited in slightly different manners [109]. Predation may result in ongoing new infections. As a consequence, new recombinant SIV<sub>cpz</sub> strains may be generated occasionally [115], and some of these strains may develop pathogenic characteristics. Thus, non-human primates are challenged by SIV infections for long periods of time, and must have developed ways to control the development of AIDS [22].

In rhesus macaque SIV models, currently used widely to study immunopathogenesis as well as to modulate the immunological responses induced by HIV-1 vaccine and vaccine components, EC is correlated with immune responses primarily directed towards the proteins Vif and Nef [116,117]. The macaque class I allotype Mamu-B\*008, which is involved in EC, has a peptide-binding motif that

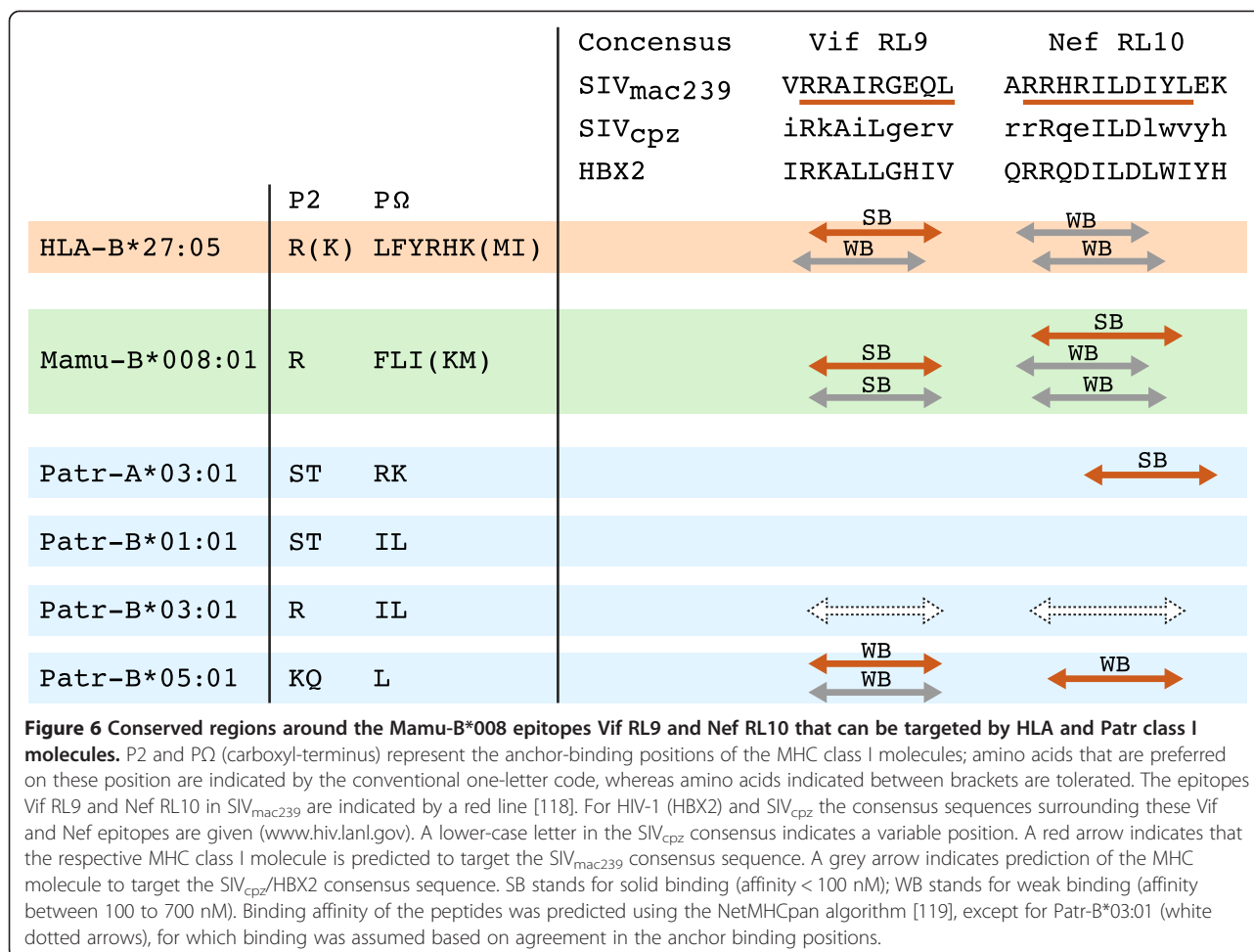
resembles HLA-B\*27, and only three CD8<sup>+</sup> T-cell epitopes were shown to be responsible for the T-cell responses controlling replication of the pathogenic SIV<sub>mac239</sub> in these ECs [118]. Two of the epitopes, Vif RL9 and Nef RL10, are conserved, and similar motifs are present in SIV<sub>cpz</sub> and HIV-1 (Figure 6). Modeling the peptide binding of the proteins Vif and Nef to HLA-B\*27:05 and the four studied Patr class I allotypes showed that they can target these conserved regions of Vif RL9 and Nef RL10 as well (Figure 6). This may suggest that, in different species, evolutionarily unrelated MHC class I molecules possessing similar peptide binding motifs are important for control of the lentiviral infection.

## Conclusions

### The selective sweep in chimpanzees: a mirror of humankind's future?

A remaining question concerns how many chimpanzees died during the pandemic that may have been caused by an HIV-1/SIV<sub>cpz</sub>-like retrovirus. This is a difficult question to answer, but it is likely that the number must have been huge. Natural history has provided a few examples in which the introduction of a “novel” virus into a naïve population resulted in mass mortality. For instance, contact between European individuals and the native population of America led to the death of millions of Amerindians as a result of infection with measles, small pox, and other viruses [120]. The deliberate infection of rabbits with the myxoma virus exterminated approximately 99% of the rabbit population in Australia [121]. Natural infections in animals can also have strong effects on population size, as is illustrated by the rinderpest epidemic in African buffalo [122], and by the decimation of seals by morbilli and influenza viruses [123,124].

Modern humans, who have their cradle in Africa, have existed for about 150,000-200,000 years [125], and display an impressive amount of MHC class I polymorphism [126]. Recent cohort studies have demonstrated that particularly those individuals equipped with HLA-B\*27 and/or -B\*57 are able to control an HIV-1 infection [49,50]. Nevertheless, in these individuals one also sees that an escape by the virus may occur, although mostly with a cost to viral fitness [127-129]. Furthermore, there is an additional effect on viral control caused by a phenomenon such as heterozygous advantage [130,131]. Chimpanzees may reflect the latter stages of selection. First, the Patr molecules have the ability to respond to an HIV-1/SIV<sub>cpz</sub> infection. Second, a quantitative aspect seem to be operative in chimpanzees, as each individual may possess several Patr molecules that can respond to different conserved parts of the HIV-1/SIV<sub>cpz</sub> proteome, termed “double lock” strategy.



The selective sweep in chimpanzees resulted in the preferential selection of Patr class I allotypes that can target conserved areas of Gag similar to those targeted by HLA-B\*27/B\*57. In humans, these allotypes also seem to predispose for the immune-mediated pathologies ankylosing spondylitis and psoriasis, respectively. Evidence for the presence of these immune-mediated pathologies in chimpanzees is very low [132,133]. In humans, the exact role of HLA-B\*27 in ankylosing spondylitis is also not known. Moreover, chimpanzee MHC class I molecules can target similar conserved motifs such as HLA-B\*27/B\*57, but this does not tell us whether the structure of the chimpanzee MHC class I molecules are comparable to HLA-B\*27/B\*57, as these molecules belong to different ancestral lineages [72,112].

In general, a virus survives best if it is able to replicate and disseminate itself within a population without killing all of its hosts. Such a host/virus state of equilibrium is, for instance, reached in different non-human primate species that are infected naturally with SIV strains. For HIV-1 and its human hosts, the battle seems to be in full swing, and without proper treatment the human population may be

hit hard by this pandemic. For humans up until now, control of HIV-1 replication, without treatment, is significantly associated with the MHC region, in particular with the MHC class I molecules HLA-B\*27:05 and -B\*57:01, which can target conserved regions of the HIV-1 Gag protein. The observations adduced in this review have important consequences for vaccine design, as different HLA specificities may target different sections of the HIV-1 proteome. One major implication is that many human individuals may not possess HLA class I molecules that have the capacity to bind conserved HIV-1 epitopes that are associated with control of AIDS development. A truly protective vaccine has not yet been reported. Therefore, until that moment arrives, prevention of the infection itself will be, for the individual, one of the most important goals as regards surviving the current HIV-1 pandemic.

#### Competing interests

The authors declare that they do not have competing interests.

#### Authors' contributions

NG and RB wrote the manuscript. Both authors have given their final approval of the manuscript.

## Acknowledgements

The authors would like to thank D Devine for editing the manuscript, H van Westbroek for preparing the figures, W Verduyn and Dr. F Claas for supplying the HLA-data, Dr. EJ Remarque for the statistical analyses, and Drs. MN Carrington, G Koopman, and EJ Verschoor for their suggestions and critical reading of the manuscript.

## Author details

<sup>1</sup>Department of Comparative Genetics and Refinement, Biomedical Primate Research Centre, Lange Kleiweg 161, 2288 GJ Rijswijk, The Netherlands.

<sup>2</sup>Department of Theoretical Biology and Bioinformatics, Utrecht University, 3584 CH Utrecht, The Netherlands.

Received: 6 December 2012 Accepted: 4 April 2013

Published: 24 May 2013

## References

- Hemelaar J: **The origin and diversity of the HIV-1 pandemic.** *Trends Mol Med* 2012, **18**:182–192.
- Thomson MM, Perez-Alvarez L, Najera R: **Molecular epidemiology of HIV-1 genetic forms and its significance for vaccine development and therapy.** *Lancet Infect Dis* 2002, **2**:461–471.
- Chun TW, Fauci AS: **HIV reservoirs: pathogenesis and obstacles to viral eradication and cure.** *AIDS* 2012, **26**:1261–1268.
- Chun TW, Davey RT Jr, Ostrowski M, Shawn Justement J, Engel D, Mullins JI, Fauci AS: **Relationship between pre-existing viral reservoirs and the re-emergence of plasma viremia after discontinuation of highly active anti-retroviral therapy.** *Nat Med* 2000, **6**:757–761.
- Davey RT Jr, Bhat N, Yoder C, Chun TW, Metcalf JA, Dewar R, Natarajan V, Lempicki RA, Adelsberger JW, Miller KD, et al: **HIV-1 and T cell dynamics after interruption of highly active antiretroviral therapy (HAART) in patients with a history of sustained viral suppression.** *Proc Natl Acad Sci USA* 1999, **96**:15109–15114.
- Garcia F, Plana M, Vidal C, Cruceta A, O'Brien WA, Pantaleo G, Pumarola T, Gallart T, Miro JM, Gatell JM: **Dynamics of viral load rebound and immunological changes after stopping effective antiretroviral therapy.** *AIDS* 1999, **13**:F79–F86.
- Harrigan PR, Whaley M, Montaner JS: **Rate of HIV-1 RNA rebound upon stopping antiretroviral therapy.** *AIDS* 1999, **13**:F59–F62.
- Friedland GH, Williams A: **Attaining higher goals in HIV treatment: the central importance of adherence.** *AIDS* 1999, **13**(Suppl 1):S61–S72.
- Wain-Hobson S, Sonigo P, Danos O, Cole S, Alizon M: **Nucleotide sequence of the AIDS virus, LAV.** *Cell* 1985, **40**:9–17.
- Subbramanian RA, Cohen EA: **Molecular biology of the human immunodeficiency virus accessory proteins.** *J Virol* 1994, **68**:6831–6835.
- Ho DD: **Perspectives series: host/pathogen interactions. Dynamics of HIV-1 replication in vivo.** *J Clin Invest* 1997, **99**:2565–2567.
- Wei X, Ghosh SK, Taylor ME, Johnson VA, Emami EA, Deutsch P, Lifson JD, Bonhoeffer S, Nowak MA, Hahn BH, et al: **Viral dynamics in human immunodeficiency virus type 1 infection.** *Nature* 1995, **373**:117–122.
- Mansky LM, Temin HM: **Lower in vivo mutation rate of human immunodeficiency virus type 1 than that predicted from the fidelity of purified reverse transcriptase.** *J Virol* 1995, **69**:5087–5094.
- Levy JA: *HIV and the Pathogenesis of AIDS.* Washington, DC: American Society of Microbiology; 2007.
- Bomsel M, David V: **Mucosal gatekeepers: selecting HIV viruses for early infection.** *Nat Med* 2003, **8**:114–116.
- Pope M, Haase AT: **Transmission, acute HIV-1 infection and the quest for strategies to prevent infection.** *Nat Med* 2003, **9**:847–852.
- van Kooyk Y, Geijtenbeek TB: **DC-SIGN: escape mechanism for pathogens.** *Nat Rev Immunol* 2003, **3**:697–709.
- McDonald D, Wu L, Bohks SM, KewalRamani VN, Unutmaz D, Hope TJ: **Recruitment of HIV and its receptors to dendritic cell-T cell junctions.** *Science* 2003, **300**:1295–1297.
- Gorry PR, Churchill M, Crowe SM, Cunningham AL, Gabuzda D: **Pathogenesis of macrophage tropic HIV-1.** *Curr HIV Res* 2005, **3**:53–60.
- Pierson T, McArthur J, Siliciano RF: **Reservoirs for HIV-1: mechanisms for viral persistence in the presence of antiviral immune responses and antiretroviral therapy.** *Annu Rev Immunol* 2000, **18**:665–708.
- Pandrea I, Apetrei C, Gordon S, Barbercheck J, Dufour J, Bohm R, Sumpter B, Roques P, Marx PA, Hirsch VM, et al: **Paucity of CD4 + CCR5+ T cells is a typical feature of natural SIV hosts.** *Blood* 2007, **109**:1069–1076.
- Sodora DL, Allan JS, Apetrei C, Brenchley JM, Douek DC, Else JG, Estes JD, Hahn BH, Hirsch VM, Kaur A, et al: **Toward an AIDS vaccine: lessons from natural simian immunodeficiency virus infections of African nonhuman primate hosts.** *Nat Med* 2009, **15**:861–865.
- Santiago ML, Range F, Keele BF, Li Y, Bailes E, Bibollet-Ruche F, Fruteau C, Noe R, Peeters M, Brookfield JF, et al: **Simian immunodeficiency virus infection in free-ranging sooty mangabeys (*Cercocebus atys atys*) from the Tai Forest, Cote d'Ivoire: implications for the origin of epidemic human immunodeficiency virus type 2.** *J Virol* 2005, **79**:12515–12527.
- Santiago ML, Rodenburg CM, Kamenya S, Bibollet-Ruche F, Gao F, Bailes E, Meleth S, Soong SJ, Kilby JM, Moldoveanu Z, et al: **SIVcpz in wild chimpanzees.** *Science* 2002, **295**:465.
- Bowden R, MacFie TS, Myers S, Hellenthal G, Nerrienet E, Bontrop RE, Freeman C, Donnelly P, Mundy NI: **Genomic tools for evolution and conservation in the chimpanzee: Pan troglodytes ellioti is a genetically distinct population.** *PLoS Genet* 2012, **8**:e1002504.
- Gagneux P, Wills C, Gerloff U, Tautz D, Morin PA, Boesch C, Fruth B, Hohmann G, Ryder OA, Woodruff DS: **Mitochondrial sequences show diverse evolutionary histories of African hominoids.** *Proc Natl Acad Sci USA* 1999, **96**:5077–5082.
- Morin PA, Moore JJ, Chakraborty R, Jin L, Goodall J, Woodruff DS: **Kin selection, social structure, gene flow, and the evolution of chimpanzees.** *Science* 1994, **265**:1193–1201.
- Bailes E, Gao F, Bibollet-Ruche F, Courgnaud V, Peeters M, Marx PA, Hahn BH, Sharp PM: **Hybrid origin of SIV in chimpanzees.** *Science* 2003, **300**:1713.
- Hahn BH, Shaw GM, De Cock KM, Sharp PM: **AIDS as a zoonosis: scientific and public health implications.** *Science* 2000, **287**:607–614.
- Plantier JC, Leoz M, Dickerson JE, De Oliveira F, Lemeze V, Damond F, Robertson DL, Simon F: **A new human immunodeficiency virus derived from gorillas.** *Nat Med* 2009, **15**:871–872.
- Van Heuverswyn F, Li Y, Neel C, Bailes E, Keele BF, Liu W, Loul S, Butel C, Liegeois F, Bienvenue Y, et al: **Human immunodeficiency viruses: SIV infection in wild gorillas.** *Nature* 2006, **444**:164.
- Takehisa J, Kraus MH, Ayoub A, Bailes E, Van Heuverswyn F, Decker JM, Li Y, Rudicell RS, Learn GH, Neel C, et al: **Origin and biology of simian immunodeficiency virus in wild-living western gorillas.** *J Virol* 2009, **83**:1635–1648.
- Hatzioannou T, Ambrose Z, Chung NP, Piatak M Jr, Yuan F, Trubey CM, Coalter V, Kiser R, Schneider D, Smedley J, et al: **A macaque model of HIV-1 infection.** *Proc Natl Acad Sci USA* 2009, **106**:4425–4429.
- Thippeshappa R, Polacino P, Yu Kimata MT, Siwak EB, Anderson D, Wang W, Sherwood L, Arora R, Wen M, Zhou P, et al: **Vif substitution enables persistent infection of pig-tailed macaques by human immunodeficiency virus type 1.** *J Virol* 2011, **85**:3767–3779.
- Gotz N, Sauter D, Usmani SM, Fritz JV, Goffinet C, Heigle A, Geyer M, Bibollet-Ruche F, Learn GH, Fackler OT, et al: **Reacquisition of Nef-mediated tetherin antagonism in a single in vivo passage of HIV-1 through its original chimpanzee host.** *Cell Host Microbe* 2012, **12**:373–380.
- Heeney JL: **AIDS: a disease of impaired Th-cell renewal?** *Immunol Today* 1995, **16**:515–520.
- Huet T, Cheynier R, Meyerhans A, Roelants G, Wain-Hobson S: **Genetic organization of a chimpanzee lentivirus related to HIV-1.** *Nature* 1990, **345**:356–359.
- Peeters M, Franssen K, Delaporte E, Van den Haesevelde M, Gershy-Damet GM, Kestens L, van der Groen G, Piot P: **Isolation and characterization of a new chimpanzee lentivirus (simian immunodeficiency virus isolate cpz-ant) from a wild-captured chimpanzee.** *AIDS* 1992, **6**:447–451.
- Peeters M, Honore C, Huet T, Bedjabaga L, Ossari S, Bussi P, Cooper RW, Delaporte E: **Isolation and partial characterization of an HIV-related virus occurring naturally in chimpanzees in Gabon.** *AIDS* 1989, **3**:625–630.
- Nerrienet E, Santiago ML, Foupouapouognigni Y, Bailes E, Mundy NI, Njinku B, Kfutwah A, Muller-Trutwin MC, Barre-Sinoussi F, Shaw GM, et al: **Simian immunodeficiency virus infection in wild-caught chimpanzees from cameroon.** *J Virol* 2005, **79**:1312–1319.
- Santiago ML, Lukasik M, Kamenya S, Li Y, Bibollet-Ruche F, Bailes E, Muller NI, Emery M, Goldenberg DA, Lwanga JS, et al: **Foci of endemic simian**

- immunodeficiency virus infection in wild-living eastern chimpanzees (*Pan troglodytes schweinfurthii*). *J Virol* 2003, **77**:7545–7562.
42. Heeney JL, Rutjens E, Verschoor EJ, Niphuis H, ten Haaf P, Rouse S, McClure H, Balla-Jhagjhoorsingh S, Bogers W, Salas M, et al: **Transmission of simian immunodeficiency virus SIVcpz and the evolution of infection in the presence and absence of concurrent human immunodeficiency virus type 1 infection in chimpanzees.** *J Virol* 2006, **80**:7208–7218.
43. Keele BF, Jones JH, Terio KA, Estes JD, Rudicell RS, Wilson ML, Li Y, Learn GH, Beasley TM, Schumacher-Stankey J, et al: **Increased mortality and AIDS-like immunopathology in wild chimpanzees infected with SIVcpz.** *Nature* 2009, **460**:515–519.
44. Etienne L, Nerrienet E, LeBreton M, Bibila GT, Foupouapouognigni Y, Rousset D, Nana A, Djoko CF, Tamoufe U, Aghokeng AF, et al: **Characterization of a new simian immunodeficiency virus strain in a naturally infected *Pan troglodytes troglodytes* chimpanzee with AIDS related symptoms.** *Retrovirology* 2011, **8**:4.
45. Novembre FJ, Saucier M, Anderson DC, Klumpp SA, O'Neil SP, Brown CR 2nd, Hart CE, Guenther PC, Swenson RB, McClure HM: **Development of AIDS in a chimpanzee infected with human immunodeficiency virus type 1.** *J Virol* 1997, **71**:4086–4091.
46. Novembre FJ, de Rosayro J, Nidtha S, O'Neil SP, Gibson TR, Evans-Strickfaden T, Hart CE, McClure HM: **Rapid CD4(+) T-cell loss induced by human immunodeficiency virus type 1(NC) in uninfected and previously infected chimpanzees.** *J Virol* 2001, **75**:1533–1539.
47. Deeks SG, Walker BD: **Human immunodeficiency virus controllers: mechanisms of durable virus control in the absence of antiretroviral therapy.** *Immunity* 2007, **27**:406–416.
48. Carrington M, O'Brien SJ: **The influence of HLA genotype on AIDS.** *Annu Rev Med* 2003, **54**:535–551.
49. Dalmaso C, Carpentier W, Meyer L, Rouzioux C, Goujard C, Chaix ML, Lambotte O, Avettand-Fenoel V, Le Clerc S, de Senneville LD, et al: **Distinct genetic loci control plasma HIV-RNA and cellular HIV-DNA levels in HIV-1 infection: the ANRS genome wide association 01 study.** *PLoS One* 2008, **3**:e3907.
50. Fellay J, Shianna KV, Ge D, Colombo S, Ledergerber B, Weale M, Zhang K, Gumbs C, Castagna A, Cossarizza A, et al: **A whole-genome association study of major determinants for host control of HIV-1.** *Science* 2007, **317**:944–947.
51. Goulder PJ, Bunce M, Krausa P, McIntyre K, Crowley S, Morgan B, Edwards A, Giangrande P, Phillips RE, McMichael AJ: **Novel, cross-restricted, conserved, and immunodominant cytotoxic T lymphocyte epitopes in slow progressors in HIV type 1 infection.** *AIDS Res Hum Retroviruses* 1996, **12**:1691–1698.
52. Kaslow RA, Carrington M, Apple R, Park L, Munoz A, Saah AJ, Goedert JJ, Winkler C, O'Brien SJ, Rinaldo C, et al: **Influence of combinations of human major histocompatibility complex genes on the course of HIV-1 infection.** *Nat Med* 1996, **2**:405–411.
53. Kiepiela P, Leslie AJ, Honeyborne I, Ramduth D, Thobakgale C, Chetty S, Rathnavalu P, Moore C, Pfaffertott KJ, Hilton L, et al: **Dominant influence of HLA-B in mediating the potential co-evolution of HIV and HLA.** *Nature* 2004, **432**:769–775.
54. Pereyra F, Jia X, McLaren PJ, Telenti A, de Bakker PI, Walker BD, Ripke S, Brumme CJ, Pulit SL, Carrington M, et al: **The major genetic determinants of HIV-1 control affect HLA class I peptide presentation.** *Science* 2010, **330**:1551–1557.
55. Marsh SG, Albert ED, Bodmer WF, Bontrop RE, Dupont B, Erlich HA, Fernandez-Vina M, Geraghty DE, Holdsworth R, Hurley CK, et al: **An update to HLA nomenclature, 2010.** *Bone Marrow Transplant* 2010, **45**:846–848.
56. Hansen TH, Bouvier M: **MHC class I antigen presentation: learning from viral evasion strategies.** *Nat Rev Immunol* 2009, **9**:503–513.
57. Harding CV, Boom WH: **Regulation of antigen presentation by *Mycobacterium tuberculosis*: a role for Toll-like receptors.** *Nat Rev Microbiol* 2010, **8**:296–307.
58. Horst D, Verweij MC, Davison AJ, Rensing ME, Wiertz EJ: **Viral evasion of T cell immunity: ancient mechanisms offering new applications.** *Curr Opin Immunol* 2011, **23**:96–103.
59. Jackson SE, Mason GM, Wills MR: **Human cytomegalovirus immunity and immune evasion.** *Virus Res* 2011, **157**:151–160.
60. Goulder PJ, Walker BD: **HIV and HLA Class I: an evolving relationship.** *Immunity* 2012, **37**:426–440.
61. Luo M, Daniuk CA, Diallo TO, Capina RE, Kimani J, Wachihi C, Kimani M, Bielawny T, Peterson T, Mendoza MG, et al: **For protection from HIV-1 infection, more might not be better: a systematic analysis of HIV Gag epitopes of two alleles associated with different outcomes of HIV-1 infection.** *J Virol* 2012, **86**:1166–1180.
62. Adams EJ, Cooper S, Parham P: **A novel, nonclassical MHC class I molecule specific to the common chimpanzee.** *J Immunol* 2001, **167**:3858–3869.
63. Geller R, Adams EJ, Guethlein LA, Little AM, Madrigal JA, Parham P: **Linkage of Patr-A to Patr-A and -B in the major histocompatibility complex of the common chimpanzee (*Pan troglodytes*).** *Immunogenetics* 2002, **54**:212–215.
64. van Rood JJ, van Leeuwen A, Balner H: **HLA and ChL-A: similarities and differences.** *Transplant Proc* 1972, **4**:55–62.
65. Domena JD, Hildebrand WH, Bias WB, Parham P: **A sixth family of HLA-A alleles defined by HLA-A\*8001.** *Tissue Antigens* 1993, **42**:156–159.
66. Kato K, Trapani JA, Alloppenna J, Dupont B, Yang SY: **Molecular analysis of the serologically defined HLA-Aw19 antigens. A genetically distinct family of HLA-A antigens comprising A29, A31, A32, and Aw33, but probably not A30.** *J Immunol* 1989, **143**:3371–3378.
67. McAdam SN, Boyson JE, Liu X, Garber TL, Hughes AL, Bontrop RE, Watkins DI: **Chimpanzee MHC class I A locus alleles are related to only one of the six families of human A locus alleles.** *J Immunol* 1995, **154**:6421–6429.
68. Fujiyama A, Watanabe H, Toyoda A, Taylor TD, Itoh T, Tsai SF, Park HS, Yaspo ML, Lehrach H, Chen Z, et al: **Construction and analysis of a human-chimpanzee comparative clone map.** *Science* 2002, **295**:131–134.
69. Klein J: **Origin of major histocompatibility complex polymorphism: the trans-species hypothesis.** *Hum Immunol* 1987, **19**:155–162.
70. Robinson J, Mistry K, McWilliam H, Lopez R, Parham P, Marsh SG: **The IMGT/HLA database.** *Nucleic Acids Res* 2011, **39**:D1171–D1176.
71. de Groot NG, Otting N, Robinson J, Blancher A, Lafont BA, Marsh SG, O'Connor DH, Shiina T, Walter L, Watkins DI, Bontrop RE: **Nomenclature report on the major histocompatibility complex genes and alleles of Great Ape, Old and New World monkey species.** *Immunogenetics* 2012, **64**:615–631.
72. de Groot NG, Otting N, Arguello R, Watkins DI, Doxiadis GG, Madrigal JA, Bontrop RE: **Major histocompatibility complex class I diversity in a West African chimpanzee population: implications for HIV research.** *Immunogenetics* 2000, **51**:398–409.
73. Adams EJ, Cooper S, Thomson G, Parham P: **Common chimpanzees have greater diversity than humans at two of the three highly polymorphic MHC class I genes.** *Immunogenetics* 2000, **51**:410–424.
74. Caggiari L, Simula MP, Marzotto A, Shiina M, Rehermann B, De Re V: **Identification of novel chimpanzee MHC class I and II alleles using an improved sequence-based typing strategy.** *Hum Immunol* 2006, **67**:63–72.
75. Chen ZW, Hughes AL, Ghim SH, Letvin NL, Watkins DI: **Two more chimpanzee Patr-A locus alleles related to the HLA-A1/A3/A11 family.** *Immunogenetics* 1993, **38**:238–240.
76. Kowalski H, Erickson AL, Cooper S, Domena JD, Parham P, Walker CM: **Patr-A and B, the orthologues of HLA-A and B, present hepatitis C virus epitopes to CD8+ cytotoxic T cells from two chronically infected chimpanzees.** *J Exp Med* 1996, **183**:1761–1775.
77. Zhang L, van Bree S, Gijbels Y, van Veen A, van Rood JJ, Class FH: **Comparison of the humoral and cytotoxic T-lymphocyte response to individual HLA class I alloantigens in highly immunized patients.** *Hum Immunol* 1991, **30**:156–161.
78. de Groot NG, Otting N, Doxiadis GG, Balla-Jhagjhoorsingh SS, Heeney JL, van Rood JJ, Gagneux P, Bontrop RE: **Evidence for an ancient selective sweep in the MHC class I gene repertoire of chimpanzees.** *Proc Natl Acad Sci USA* 2002, **99**:11748–11753.
79. de Groot NG, Heijmans CM, de Groot N, Otting N, de Vos-Rouweller AJ, Remarque EJ, Bonhomme M, Doxiadis GG, Crouau-Roy B, Bontrop RE: **Pinpointing a selective sweep to the chimpanzee MHC class I region by comparative genomics.** *Mol Ecol* 2008, **17**:2074–2088.
80. Brenchley JM, Schacker TW, Ruff LE, Price DA, Taylor JH, Beilman GJ, Nguyen PL, Khoruts A, Larson M, Haase AT, Douek DC: **CD4+ T cell depletion during all stages of HIV disease occurs predominantly in the gastrointestinal tract.** *J Exp Med* 2004, **200**:749–759.
81. Mehandru S, Poles MA, Tenner-Racz K, Horowitz A, Hurley A, Hogan C, Boden D, Racz P, Markowitz M: **Primary HIV-1 infection is associated with preferential depletion of CD4+ T lymphocytes from effector sites in the gastrointestinal tract.** *J Exp Med* 2004, **200**:761–770.

82. Veazey RS, Lackner AA: Getting to the guts of HIV pathogenesis. *J Exp Med* 2004, **200**:697–700.
83. Li Q, Duan L, Estes JD, Ma ZM, Rourke T, Wang Y, Reilly C, Carlis J, Miller CJ, Haase AT: Peak SIV replication in resting memory CD4+ T cells depletes gut lamina propria CD4+ T cells. *Nature* 2005, **434**:1148–1152.
84. Groh V, Bahram S, Bauer S, Herman A, Beauchamp M, Spies T: Cell stress-regulated human major histocompatibility complex class I gene expressed in gastrointestinal epithelium. *Proc Natl Acad Sci USA* 1996, **93**:12445–12450.
85. Anzai T, Shiina T, Kimura N, Yanagiya K, Kohara S, Shigenari A, Yamagata T, Kulski JK, Naruse TK, Fujimori Y, et al: Comparative sequencing of human and chimpanzee MHC class I regions unveils insertions/deletions as the major path to genomic divergence. *Proc Natl Acad Sci USA* 2003, **100**:7708–7713.
86. de Groot NG, Garcia CA, Verschoor EJ, Doxiadis GG, Marsh SG, Otting N, Bontrop RE: Reduced MIC gene repertoire variation in West African chimpanzees as compared to humans. *Mol Biol Evol* 2005, **22**:1375–1385.
87. Gleimer M, Parham P: Stress management: MHC class I and class I-like molecules as reporters of cellular stress. *Immunity* 2003, **19**:469–477.
88. Steinle A, Groh V, Spies T: Diversification, expression, and gamma delta T cell recognition of evolutionarily distant members of the MIC family of major histocompatibility complex class I-related molecules. *Proc Natl Acad Sci USA* 1998, **95**:12510–12515.
89. Shum BP, Flodin LR, Muir DG, Rajalingam R, Khakoo SI, Cleland S, Guethlein LA, Uhrberg M, Parham P: Conservation and variation in human and common chimpanzee CD94 and NKG2 genes. *J Immunol* 2002, **168**:240–252.
90. Gonzalez E, Bamshad M, Sato N, Mummidi S, Dhanda R, Catano G, Cabrera S, McBride M, Cao XH, Merrill G, et al: Race-specific HIV-1 disease-modifying effects associated with CCR5 haplotypes. *Proc Natl Acad Sci USA* 1999, **96**:12004–12009.
91. Samson M, Libert F, Doranz BJ, Rucker J, Liesnard C, Farber CM, Saragosti S, Lapoumeroulie C, Cognaux J, Forceille C, et al: Resistance to HIV-1 infection in caucasian individuals bearing mutant alleles of the CCR-5 chemokine receptor gene. *Nature* 1996, **382**:722–725.
92. Benton PA, Lee DR, Kennedy RC: Sequence comparisons of non-human primate HIV-1 coreceptor homologues. *Mol Immunol* 1998, **35**:95–101.
93. Pretet JL, Zerbib AC, Girard M, Guillet JG, Butor C: Chimpanzee CXCR4 and CCR5 act as coreceptors for HIV type 1. *AIDS Res Hum Retroviruses* 1997, **13**:1583–1587.
94. Voevodin A, Samilchuk E, Dashti S: A survey for 32 nucleotide deletion in the CCR-5 chemokine receptor gene (deltaccr-5) conferring resistance to human immunodeficiency virus type 1 in different ethnic groups and in chimpanzees. *J Med Virol* 1998, **55**:147–151.
95. Bamshad MJ, Mummidi S, Gonzalez E, Ahuja SS, Dunn DM, Watkins WS, Wooding S, Stone AC, Jorde LB, Weiss RB, Ahuja SK: A strong signature of balancing selection in the 5' cis-regulatory region of CCR5. *Proc Natl Acad Sci USA* 2002, **99**:10539–10544.
96. Wooding S, Stone AC, Dunn DM, Mummidi S, Jorde LB, Weiss RK, Ahuja S, Bamshad MJ: Contrasting effects of natural selection on human and chimpanzee CC chemokine receptor 5. *Am J Hum Genet* 2005, **76**:291–301.
97. MacFie TS, Nerrienet E, de Groot NG, Bontrop RE, Mundy NI: Patterns of diversity in HIV-related loci among subspecies of chimpanzee: concordance at CCR5 and differences at CXCR4 and CX3CR1. *Mol Biol Evol* 2009, **26**:719–727.
98. Van Heuverswyn F, Li Y, Bailes E, Neel C, Lafay B, Keele BF, Shaw KS, Takehisa J, Kraus MH, Loul S, et al: Genetic diversity and phylogeographic clustering of SIVcpzPtt in wild chimpanzees in Cameroon. *Virology* 2007, **368**:155–171.
99. Strebel K, Luban J, Jeang KT: Human cellular restriction factors that target HIV-1 replication. *BMC Med* 2009, **7**:48.
100. Sawyer SL, Emerman M, Malik HS: Ancient adaptive evolution of the primate antiviral DNA-editing enzyme APOBEC3G. *PLoS Biol* 2004, **2**:E275.
101. Sobieszczyk ME, Lingappa JR, McElrath MJ: Host genetic polymorphisms associated with innate immune factors and HIV-1. *Curr Opin HIV AIDS* 2011, **6**:427–434.
102. Duggal NK, Malik HS, Emerman M: The breadth of antiviral activity of APOBEC3DE in chimpanzees has been driven by positive selection. *J Virol* 2011, **85**:11361–11371.
103. Bontrop RE, Broos LA, Otting N, Jonker MJ: Polymorphism of C4 and CYP21 genes in various primate species. *Tissue Antigens* 1991, **37**:145–151.
104. Tassabehji M, Strachan T, Anderson M, Campbell RD, Collier S, Lako M: Identification of a novel family of human endogenous retroviruses and characterization of one family member, HERV-K(C4), located in the complement C4 gene cluster. *Nucleic Acids Res* 1994, **22**:5211–5217.
105. Schneider PM, Witzel-Schlomp K, Steinhauer C, Stradmann-Bellinghausen B, Rittner C: Rapid detection of the ERV-K(C4) retroviral insertion reveals further structural polymorphism of the complement C4 genes in old world primates. *Exp Clin Immunogenet* 2001, **18**:130–134.
106. Prüfer K, Munch K, Hellmann I, Akagi K, Miller JR, Walenz B, Koren S, Sutton G, Kodira C, Winer R, et al: The bonobo genome compared with the chimpanzee and human genomes. *Nature* 2012, **486**:527–531.
107. Borghans JA, Molgaard A, de Boer RJ, Kesmir C: HLA alleles associated with slow progression to AIDS truly prefer to present HIV-1 p24. *PLoS One* 2007, **2**:e920.
108. Rolland M, Heckerman D, Deng W, Rousseau CM, Coovadia H, Bishop K, Goulder PJ, Walker BD, Brander C, Mullins JI: Broad and Gag-biased HIV-1 epitope repertoires are associated with lower viral loads. *PLoS One* 2008, **3**:e1424.
109. de Groot NG, Heijmans CM, Zoet YM, de Ru AH, Verreck FA, van Veelen PA, Drijfhout JW, Doxiadis GG, Remarque EJ, Doxiadis II, et al: AIDS-protective HLA-B\*27/B\*57 and chimpanzee MHC class I molecules target analogous conserved areas of HIV-1/SIVcpz. *Proc Natl Acad Sci USA* 2010, **107**:15175–15180.
110. van Deutekom HW, Hoof I, Bontrop RE, Kesmir C: A comparative analysis of viral peptides presented by contemporary human and chimpanzee MHC class I molecules. *J Immunol* 2011, **187**:5995–6001.
111. Gleimer M, Wahl AR, Hickman HD, Abi-Rached L, Norman PJ, Guethlein LA, Hammond JA, Draghi M, Adams EJ, Juo S, et al: Although divergent in residues of the peptide binding site, conserved chimpanzee Patr-AL and polymorphic human HLA-A\*02 have overlapping peptide-binding repertoires. *J Immunol* 2011, **186**:1575–1588.
112. Balla-Jhaghoorsingh SS, Koopman G, Mooij P, Haaksma TG, Teeuwssen VJ, Bontrop RE, Heeney JL: Conserved CTL epitopes shared between HIV-infected human long-term survivors and chimpanzees. *J Immunol* 1999, **162**:2308–2314.
113. Balla-Jhaghoorsingh SS, Mooij P, ten Haaf PJ, Bogers WM, Teeuwssen VJ, Koopman G, Heeney JL: Protection from secondary human immunodeficiency virus type 1 infection in chimpanzees suggests the importance of antigenic boosting and a possible role for cytotoxic T cells. *J Infect Dis* 2001, **184**:136–143.
114. Hvilsom C, Carlsen F, Siegismund HR, Corbet S, Nerrienet E, Fomsgaard A: Genetic subspecies diversity of the chimpanzee CD4 virus-receptor gene. *Genomics* 2008, **92**:322–328.
115. Leitner T, Dazza MC, Ekwalanga M, Apetrei C, Saragosti S: Sequence diversity among chimpanzee simian immunodeficiency viruses (SIVcpz) suggests that SIVcpzPtt was derived from SIVcpzPtt through additional recombination events. *AIDS Res Hum Retroviruses* 2007, **23**:1114–1118.
116. Mothe BR, Sidney J, Dzuris JL, Liebl ME, Fuenger S, Watkins DI, Sette A: Characterization of the peptide-binding specificity of Mamu-B\*17 and identification of Mamu-B\*17-restricted epitopes derived from simian immunodeficiency virus proteins. *J Immunol* 2002, **169**:210–219.
117. Valentine LE, Loffredo JT, Bean AT, Leon EJ, MacNair CE, Beal DR, Piskowski SM, Klimentidis YC, Lank SM, Wiseman RW, et al: Infection with "escaped" virus variants impairs control of simian immunodeficiency virus SIVmac239 replication in Mamu-B\*08-positive macaques. *J Virol* 2009, **83**:11514–11527.
118. Mudd PA, Martins MA, Ericson AJ, Tully DC, Power KA, Bean AT, Piskowski SM, Duan L, Seese A, Gladden AD, et al: Vaccine-induced CD8+ T cells control AIDS virus replication. *Nature* 2012, **491**:129–133.
119. Hoof I, Peters B, Sidney J, Pedersen LE, Sette A, Lund O, Buus S, Nielsen M: NetMHCpan, a method for MHC class I binding prediction beyond humans. *Immunogenetics* 2009, **61**:1–13.
120. McMichael AJ: Environmental and social influences on emerging infectious diseases: past, present and future. *Philos Trans R Soc Lond B Biol Sci* 2004, **359**:1049–1058.
121. Silvers L, Inglis B, Labudovic A, Janssens PA, van Leeuwen BH, Kerr PJ: Virulence and pathogenesis of the MSW and MSD strains of Californian myxoma virus in European rabbits with genetic resistance to myxomatosis compared to rabbits with no genetic resistance. *Virology* 2006, **348**:72–83.

122. Wenink PW, Groen AF, Roelke-Parker ME, Prins HH: **African buffalo maintain high genetic diversity in the major histocompatibility complex in spite of historically known population bottlenecks.** *Mol Ecol* 1998, **7**:1315–1322.
123. Domingo M, Visa J, Pumarola M, Marco AJ, Ferrer L, Rabanal R, Kennedy S: **Pathologic and immunocytochemical studies of morbillivirus infection in striped dolphins (*Stenella coeruleoalba*).** *Vet Pathol* 1992, **29**:1–10.
124. Geraci JR, St Aubin DJ, Barker IK, Webster RG, Hinshaw VS, Bean WJ, Ruhne HL, Prescott JH, Early G, Baker AS, et al: **Mass mortality of harbor seals: pneumonia associated with influenza A virus.** *Science* 1982, **215**:1129–1131.
125. Mellars P: **Why did modern human populations disperse from Africa ca. 60,000 years ago? A new model.** *Proc Natl Acad Sci USA* 2006, **103**:9381–9386.
126. Parham P, Ohta T: **Population biology of antigen presentation by MHC class I molecules.** *Science* 1996, **272**:67–74.
127. Miura T, Brockman MA, Schneidewind A, Lobritz M, Pereyra F, Rathod A, Block BL, Brumme ZL, Brumme CJ, Baker B, et al: **HLA-B57/B\*5801 human immunodeficiency virus type 1 elite controllers select for rare gag variants associated with reduced viral replication capacity and strong cytotoxic T-lymphocyte [corrected] recognition.** *J Virol* 2009, **83**:2743–2755.
128. Schneidewind A, Brockman MA, Yang R, Adam RI, Li B, Le Gall S, Rinaldo CR, Craggs SL, Allgaier RL, Power KA, et al: **Escape from the dominant HLA-B27-restricted cytotoxic T-lymphocyte response in Gag is associated with a dramatic reduction in human immunodeficiency virus type 1 replication.** *J Virol* 2007, **81**:12382–12393.
129. Troyer RM, McNevin J, Liu Y, Zhang SC, Krizan RW, Abraha A, Tebit DM, Zhao H, Avila S, Lobritz MA, et al: **Variable fitness impact of HIV-1 escape mutations to cytotoxic T lymphocyte (CTL) response.** *PLoS Pathog* 2009, **5**:e1000365.
130. Carrington M, Nelson GW, Martin MP, Kissner T, Vlahov D, Goedert JJ, Kaslow R, Buchbinder S, Hoots K, O'Brien SJ: **HLA and HIV-1: heterozygote advantage and B\*35-Cw\*04 disadvantage.** *Science* 1999, **283**:1748–1752.
131. Matthews PC, Listgarten J, Carlson JM, Payne R, Huang KH, Frater J, Goedhals D, Steyn D, van Vuuren C, Paioni P, et al: **Co-operative additive effects between HLA alleles in control of HIV-1.** *PLoS One* 2012, **7**:e47799.
132. Biella U, Hausteiner UF, Seifert S, Adler J, Schuppel KF, Eulenberger K: **[Psoriasis in a female chimpanzee].** *Hautarzt* 1991, **42**:322–323.
133. Taurog JD: **Animal models of spondyloarthritis.** *Adv Exp Med Biol* 2009, **649**:245–254.

doi:10.1186/1742-4690-10-53

**Cite this article as:** de Groot and Bontrop: The HIV-1 pandemic: does the selective sweep in chimpanzees mirror humankind's future?.

*Retrovirology* 2013 **10**:53.

**Submit your next manuscript to BioMed Central and take full advantage of:**

- Convenient online submission
- Thorough peer review
- No space constraints or color figure charges
- Immediate publication on acceptance
- Inclusion in PubMed, CAS, Scopus and Google Scholar
- Research which is freely available for redistribution

Submit your manuscript at  
[www.biomedcentral.com/submit](http://www.biomedcentral.com/submit)

 **BioMed Central**