

Research

Open Access

## Immunohistochemical evidence for an endocrine/paracrine role for ghrelin in the reproductive tissues of sheep

David W Miller\*<sup>1,2,3</sup>, Joanne L Harrison<sup>3,4</sup>, Yvonne A Brown<sup>3</sup>, Una Doyle<sup>3</sup>, Alanna Lindsay<sup>3</sup>, Clare L Adam<sup>4</sup> and Richard G Lea<sup>4</sup>

Address: <sup>1</sup>School of Veterinary and Biomedical Sciences, Murdoch University, South Street, Murdoch, WA, Australia, <sup>2</sup>Sustainable Livestock Systems Group, Scottish Agricultural College, Bucksburn, Aberdeen, UK, <sup>3</sup>School of Biological Sciences, University of Aberdeen, Aberdeen, UK and <sup>4</sup>Early Life Nutrition Group, Rowett Research Institute, Greenburn Rd, Bucksburn, Aberdeen, UK

Email: David W Miller\* - d.miller@murdoch.edu.au; Joanne L Harrison - J.Harrison@rowett.ac.uk; Yvonne A Brown - yvonnebrown@hotmail.com; Una Doyle - unadoyle@yahoo.com; Alanna Lindsay - alannalindsay@hotmail.com; Clare L Adam - C.Adam@rowett.ac.uk; Richard G Lea - R.Lea@rowett.ac.uk

\* Corresponding author

Published: 31 October 2005

Received: 03 October 2005

*Reproductive Biology and Endocrinology* 2005, **3**:60 doi:10.1186/1477-7827-3-60

Accepted: 31 October 2005

This article is available from: <http://www.rbej.com/content/3/1/60>

© 2005 Miller et al; licensee BioMed Central Ltd.

This is an Open Access article distributed under the terms of the Creative Commons Attribution License (<http://creativecommons.org/licenses/by/2.0>), which permits unrestricted use, distribution, and reproduction in any medium, provided the original work is properly cited.

### Abstract

**Background:** The gut hormone, ghrelin, is involved in the neuroendocrine and metabolic responses to hunger. In monogastric species, circulating ghrelin levels show clear meal-related and body weight-related changes. The pattern of secretion and its role in ruminant species is less clear. Ghrelin acts via growth hormone secretagogue receptors (GHSR-1a) to alter food intake, fat utilization, and cellular proliferation. There is also evidence that ghrelin is involved in reproductive function. In the present study we used immunohistochemistry to investigate the presence of ghrelin and GHSR-1a in sheep reproductive tissues. In addition, we examined whether ghrelin and GHSR-1a protein expression is developmentally regulated in the adult and fetal ovine testis, and whether there is an association with markers of cellular proliferation, i.e. stem cell factor (SCF) and proliferating cell nuclear antigen (PCNA).

**Methods:** Antibodies raised against ghrelin and its functional receptor, GHSR-type 1a, were used in standard immunohistochemical protocols on various reproductive tissues collected from adult and fetal sheep. GHSR-1a mRNA presence was also confirmed by in situ hybridisation. SCF and PCNA immunoreexpression was investigated in fetal testicular samples. Adult and fetal testicular immunostaining for ghrelin, GHSR-1a, SCF and PCNA was analysed using computer-aided image analysis. Image analysis data were subjected to one-way ANOVA, with differences in immunostaining between time-points determined by Fisher's least significant difference.

**Results:** In adult sheep tissue, ghrelin and GHSR-1a immunostaining was detected in the stomach (abomasum), anterior pituitary gland, testis, ovary, and hypothalamic and hindbrain regions of the brain. In the adult testis, there was a significant effect of season (photoperiod) on the level of immunostaining for ghrelin ( $p < 0.01$ ) and GHSR-1a ( $p < 0.05$ ). In the fetal sheep testis, there was a significant effect of gestational age on the level of immunostaining for ghrelin ( $p < 0.001$ ), GHSR-1a ( $p < 0.05$ ), SCF ( $p < 0.05$ ) and PCNA ( $p < 0.01$ ).

**Conclusion:** Evidence is presented for the presence of ghrelin and its receptor in various reproductive tissues of the adult and fetal sheep. In addition, the data indicate that testicular expression of ghrelin and its receptor is physiologically regulated in the adult and developmentally regulated in the fetus. Therefore, the ghrelin ligand/receptor system may have a role (endocrine and/or paracrine) in the development (cellular proliferation) and function of the reproductive axis of the sheep.

## Background

Ghrelin is an acylated polypeptide hormone secreted predominantly by endocrine cells of the stomach [1,2]. Several lines of evidence implicate ghrelin in the regulation of growth hormone (GH) release, energy balance, food intake and body weight [3-6], with the effects mediated via a 7-transmembrane G protein-coupled receptor, the GH secretagogue receptor (GHSR) type 1a [2]. Evidence is also accumulating to suggest that ghrelin may play a role in the central regulation of reproduction. For example, exogenous ghrelin has been shown to inhibit luteinising hormone (LH) secretion in rats, both *in vivo* and *in vitro* [7,8], and immunoreactivity and gene expression for ghrelin and its functional receptor have been found in the hypothalamic region of the rat and human brain, an area known to be important in the control of reproduction [2,9-11]. There may also be peripheral (paracrine) effects of ghrelin on the reproductive axis, with reports of the ghrelin ligand/receptor system being present in rat and human gonads [12-15]. Although ruminant species also appear to utilise the ghrelin system to modulate neuroendocrine and metabolic responses to hunger [1,6,16-20], little is known of the tissue distribution of ghrelin and its receptor, nor of its link to the reproductive axis in these species.

Although ghrelin is predominantly produced by the stomach, gene expression for ghrelin and its receptor in human and rat tissues indicates a widespread distribution in various organs, including the intestine, heart, kidney, liver, lung, pancreas, placenta, pituitary, gonads and brain [21-23]. The peripheral role of ghrelin is unclear, although it has been indicated that it is involved in the control of cellular apoptosis and proliferation [24-29]. The expression of ghrelin receptor in the rat testis has also been shown to be up-regulated around the time of pubertal gonad development [30]. In sheep, the non-breeding season (which is primarily regulated by photoperiod) is associated with a marked reduction in testis weight, fewer germ cells maturing beyond the spermatocyte stages, and decreased steroidogenic activity of the Leydig cells [31]. The possible paracrine role of ghrelin in the testis in this seasonal process has not been investigated.

Development of the reproductive organs during fetal and post-natal life is essential for normal sexual function in adulthood. In rats, it is known that the fetus and placenta secrete ghrelin, and that the ghrelin receptor is present in fetal tissues [32-35]. It is speculated that alteration in maternal, placental or fetal ghrelin during pregnancy, such as that caused by maternal feed restriction [36-38], might contribute to programming of adult infertility via central or peripheral mechanisms. One such mechanism could involve a link between ghrelin and cell proliferation in the control of fetal testicular development. Ghrelin has

been shown to specifically inhibit the proliferative activity of immature Leydig cells by down-regulating stem cell factor (SCF) gene expression [39]. It remains equivocal whether the ghrelin system is developmentally regulated in fetal reproductive organs, and whether there are interactions with other paracrine regulators of gonadal development such as SCF.

In the present study we used immunohistochemistry to test the hypothesis that ghrelin and its functional receptor, GHSR-1a, are present in tissues of the ovine reproductive axis, namely in adult hypothalamus, pituitary and gonads. In addition, we examined whether (a) ghrelin and GHSR-1a protein expression is developmentally or physiologically regulated in the adult and fetal ovine testis and (b) ghrelin expression is linked to proliferative activity in the developing fetal testis.

## Methods

### Animals and tissue collection

All experimental procedures involving animals were conducted under the authority of the Animals (Scientific Procedures) Act, UK, 1986 after Home Office and local ethical committee approval. Tissue samples including stomach (abomasum; i.e. control tissue), brain (hypothalamus & hindbrain), pituitary gland, testis and ovary from adult Suffolk-cross sheep collected from a local abattoir, were immersion-fixed in Bouin's solution for 6 h. Testicular tissue samples from 12 reproductively active (short-day photoperiod, 8 h light:16 h dark) and 10 reproductively regressed (long-day photoperiod, 16 h light:8 h dark) adult Soay rams (2 years old) housed under these artificial lighting conditions for 12 weeks were also collected [40] and immersion-fixed in Bouin's solution for 6 h. Testicular tissue samples for *in situ* hybridisation analysis of GHSR-1a mRNA expression were also collected, immediately frozen on dry ice and stored at -80°C. Fetal testicular tissue samples were collected from Greyface ewes killed, as part of another study [41], on days 30, 40, 50, 70, 100 and 140 of gestation (term  $\approx$  day 145). Fetuses ( $n = 7$  male fetuses at each gestational age) were quickly recovered, immediately exsanguinated, and either the hind torsos were fixed intact (days 30 and 40 of gestation) or testes were fixed following dissection (on days 50, 70, 100 and 140 of gestation). Fetal testicular tissue samples were immersion-fixed in Bouin's solution for 6 h. After fixation, all tissue samples were rinsed and then stored in 70% alcohol before processing and embedding into paraffin wax using standard procedures. Sections (5  $\mu$ m) were cut and mounted on poly-L-lysine coated glass slides and dried overnight at 42°C prior to immunohistochemical analysis.

### **Immunohistochemistry**

Tissue sections were dewaxed in Histoclear, re-hydrated through a graded ethanol series (100%, 95% & 70%) and washed in Tris-buffered saline for  $2 \times 5$  min. Where antigen retrieval procedures were necessary (see below), this was achieved by microwaving (800 W) the tissue sections in 0.01 M citrate buffer on full power for  $3 \times 5$  minutes, followed by a 20 minute rest period. Sections were placed in a DAKO autostainer and incubated at room temperature with the appropriate primary antibodies as follows: (a) anti-human ghrelin (Phoenix Europe GmbH, Karlsruhe, Germany) at a 1:600 dilution for 30 mins, (b) anti-human growth hormone secretagogue receptor-1a (Phoenix Europe GmbH, Karlsruhe, Germany) at a 1:400 dilution, (c) anti-ovine SCF (kindly supplied by Dr K McNatty, Wallaceville Animal Research Station, Upper Hutt, New Zealand, and characterised by Tisdall et al. [42]), at a 1:450 dilution and (d) anti-rat PCNA (Novacastria Laboratories Ltd., Newcastle, UK) at a 1:100 dilution. Ghrelin peptide sequences are highly conserved between species [43,44] and the cross-reactivity and specificity of the anti-human ghrelin and GHSR-1a antibodies were tested using control ovine stomach tissue.

Ghrelin and SCF immunoreactivity required antigen retrieval and used the DAKO ChemMate peroxidase/DAB detection system (DakoCytomation Ltd, Ely, UK). In brief, this comprised a peroxidase block step with 3% hydrogen peroxide for 5 mins, followed by a 30 minute incubation with secondary biotinylated link antibody (ChemMate A solution) and a 30 minute incubation with peroxidase substrate (ChemMate B solution). In between each of these steps the slides were rinsed with Tris-buffered saline (TBS). Diaminobenzidine tetrahydrochloride (DAB: DakoCytomation Ltd, Ely, UK) was then applied in two 5 minute incubations. Sections were counterstained with haematoxylin Z (Vector Laboratories Ltd, Peterborough, UK). The negative controls were produced by substituting the primary antibody with normal rabbit serum at the same dilution as the primary antibody.

Ghrelin receptor (GHSR-1a) and PCNA immunoreactivity were detected using the Vectastain Elite ABC kit (Vector Laboratories Ltd, Peterborough, UK) The protocol was as described above with exception of the following: the secondary antibody was a biotinylated rabbit anti-goat IgG (Vector Laboratories Ltd, Peterborough, UK) in a 1:200 dilution. The tissue sections were then incubated with the Vectastain Elite ABC reagent (Vector Laboratories Ltd, Peterborough, UK) for 30 minutes before undergoing the final steps (as above). Negative controls were produced by substituting the primary antibody with normal rabbit or horse serum (1:200).

To determine antibody specificity, all primary antibodies were incubated overnight with immunising peptide. Following incubation, antibody-antigen preparations were centrifuged and the supernatant applied to selected tissue sections.

### **Testicular GHSR-1a gene expression**

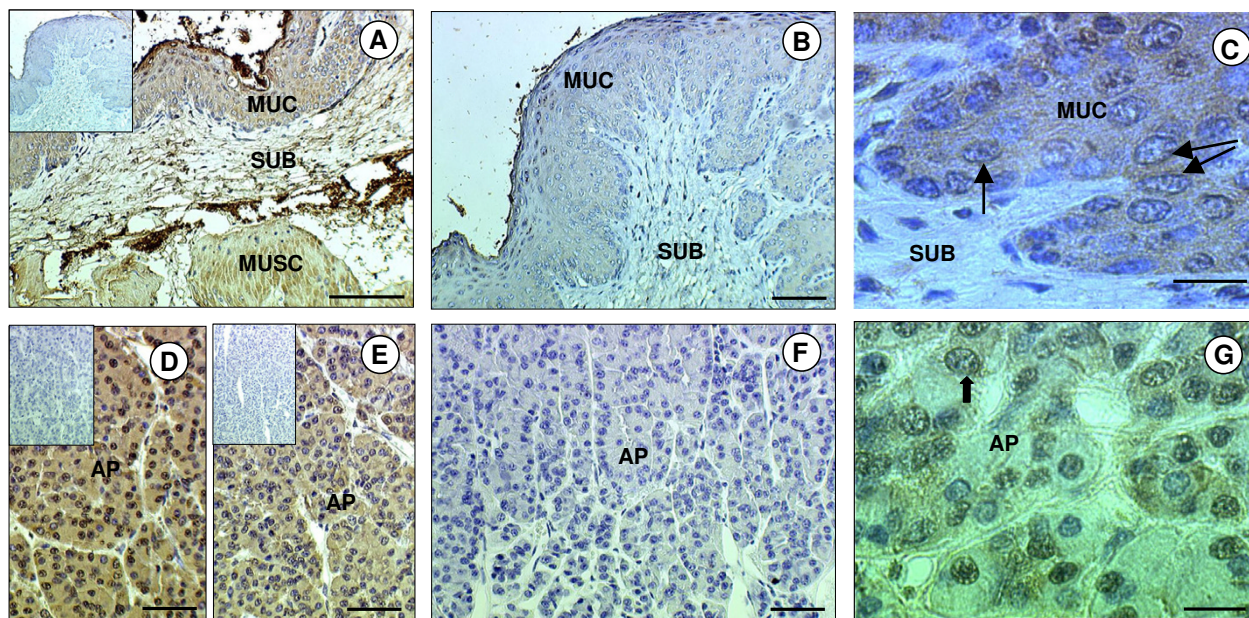
Messenger RNA levels were quantified by *in situ* hybridisation using techniques previously described in detail by Mercer et al. [45]. A riboprobe complementary to GHSR-1a was generated from cloned cDNA from the hypothalamus of rat [46]. The sequence of this cDNA fragment used by Tups and colleagues [46] was compared to the same region of the ovine gene using the Multalin multiple sequence alignment website. Across this region of the GHSR-1a gene, there was 90% homology between rat and sheep.

Frozen adult sheep testicular sections ( $20 \mu\text{m}$ ) were cut onto glass slides double-coated with gelatin and poly-L-lysine, with six or seven sections mounted on each slide. Briefly, slides were fixed in cold NBF, acetylated, and hybridised overnight at  $58^\circ\text{C}$  using [ $^{35}\text{S}$ ]-labelled cRNA probes ( $2 \times 10^7$  c.p.m./ml). Slides were treated with RNase A, desalted, with a final high stringency wash (30 min) in  $0.1 \times \text{SSC}$  at  $60^\circ\text{C}$ , dried and exposed for 4 weeks to Kodak Biomax MR Film (Kodak, Rochester, NY, USA). Autoradiographic images were captured using the Image-Pro Plus system (Media Cybernetics, Maryland, USA).

### **Image and statistical analysis**

Immunostained area for ghrelin and GHSR-1a in adult testis tissue from the Soay rams, and ghrelin, GHSR-1a, SCF and PCNA in fetal testis tissue was analysed using computer aided image analysis. The system was composed of a Zeiss axioplan microscope (Zeiss, West Germany) and HV-C20 Hitachi camera (Hitachi, Japan) connected to a computer running Image-Pro Plus system. Four sections per testis were quantified for tissue section area stained (brown colour) over six randomly selected fields of view previously shown to be sufficient to stabilise the mean and standard error [47]. The total area of positively stained cells (brown) was selected and expressed as a sum of pixels. All nuclei were then selected (brown = immunopositive + blue = haematoxylin Z) and the positively stained cells were expressed as a percentage of the total.

Image analysis data were subjected to one-way ANOVA, with differences between testicular immunostaining levels of ghrelin, GHSR-1a, SCF and PCNA at different stages of gestation in the fetuses determined by Fisher's least significant difference.



**Figure 1**

**Immunohistochemical localisation of ghrelin and GHSR-1a in the sheep stomach and pituitary gland.** Photomicrographs of sheep stomach (abomasum) and anterior pituitary (AP) sections immunostained with antibodies against either ghrelin or GHSR-1a. (A) Stomach section showing positive staining for ghrelin (brown) in tunica mucosa (MUC), tunica submucosa (SUB) and tunica muscularis (MUSC). (B) Positive immunostaining in the stomach was abolished when the antiserum was pre-incubated with the immunising peptide (ghrelin). (C) High magnification micrograph of MUC showing the cytoplasmic and perinuclear (arrow) nature of the immunostaining for ghrelin. (D) AP section showing positive staining for ghrelin in most cells. (E) AP section showing positive staining for GHSR-1a in most cells. (F) Positive immunostaining for GHSR-1a in the AP was abolished when the antiserum was pre-incubated with the immunising peptide. (G) High magnification micrograph of the AP showing the cytoplasmic and perinuclear (arrows) nature of the immunostaining for GHSR-1a. The scale bar of A represents 100  $\mu\text{m}$ , for B, D, E, F they represent 50  $\mu\text{m}$ , and for C, G they represent 20  $\mu\text{m}$ . The insert is the negative control.

## Results

### Antibody specificity

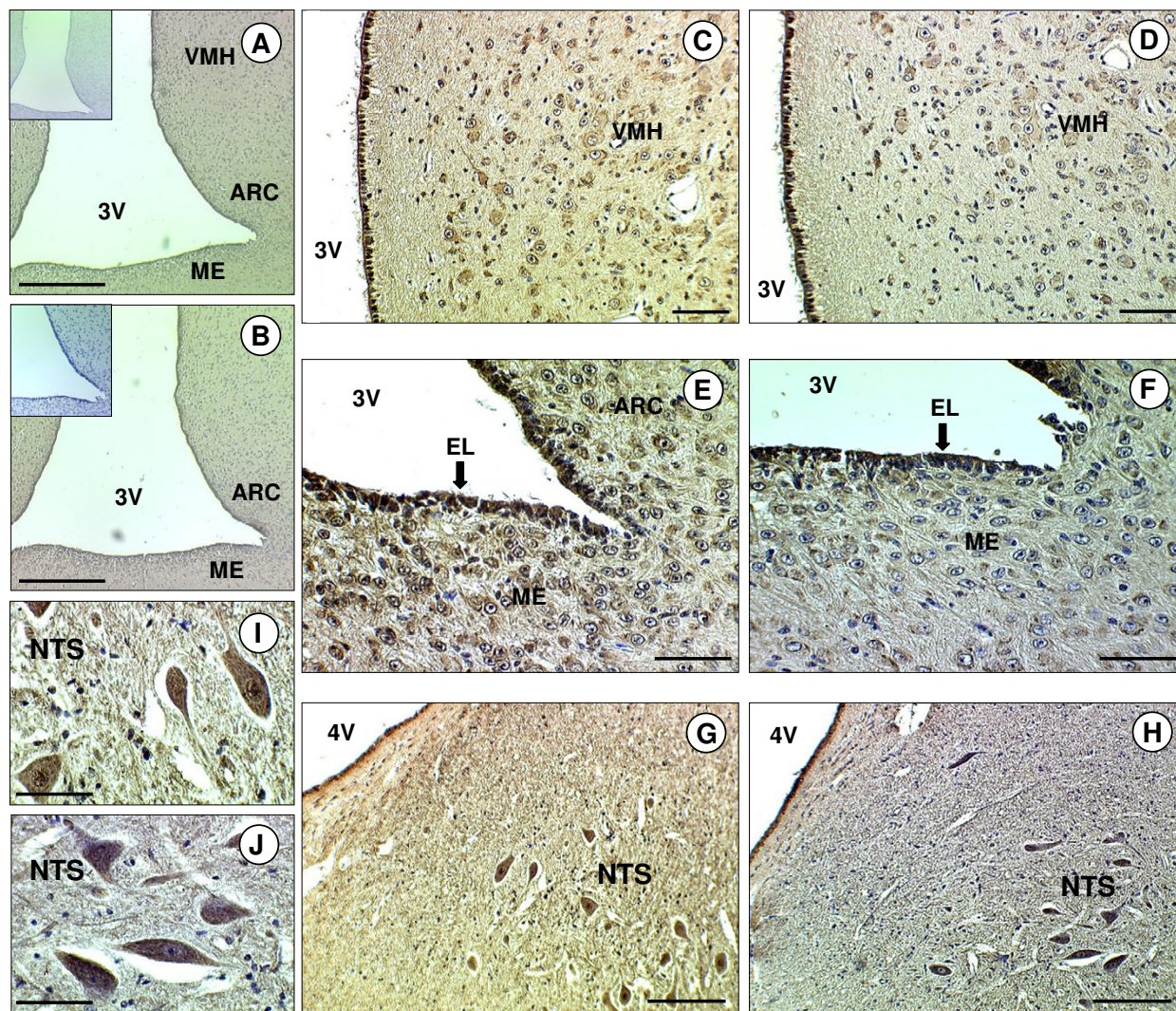
The specificity of the three antibodies (anti-ghrelin, anti-GHSR1a and anti-SCF) was confirmed by the absence of immunostaining when the primary antibody was replaced with serum from the species in which the antibody was raised. Additionally, immunostaining was abolished when the antisera were pre-incubated with the immunising peptide (Fig. 1). In all tissues investigated, the ghrelin immunopositive cells exhibited perinuclear staining and/or more widespread cytoplasmic staining. At high magnification it was confirmed that the nuclei were indeed negative (Fig. 1). The GHSR-1a and SCF positive cells both exhibited cytoplasmic staining.

### Ghrelin and GHSR-1a in adult sheep tissues

There was general immunopositive staining for ghrelin and GHSR-1a throughout hypothalamic region of the brain, including the median eminence (ME), arcuate nucleus (ARC), ventromedial hypothalamus (VMH) and

ependymal lining (EL) of the third cerebral ventricle (Fig. 2). Ghrelin and GHSR-1a were also present in the hind-brain where they were found in distinct neuronal bodies in the nucleus tract solitarius (NTS). The immunoreactivity of ghrelin in the NTS neuronal bodies showed general cytoplasmic staining with some nuclear/perinuclear staining also detectable. (Fig. 2). In the anterior pituitary gland, ghrelin and GHSR-1a immunoreactivity was also present, with GHSR-1a showing cytoplasmic and perinuclear staining in some cells (Fig. 1). In the adult ovary, ghrelin and GHSR-1a were immuno-localised to ovarian follicles at all developmental stages (primordial, primary, secondary, pre-antral and antral). Both proteins were also co-localised to the granulosa cells and some staining was observed in the thecal cells of the larger follicles (Fig. 3). Ghrelin and GHSR-1a immunostaining was also present in the luteal cells of the corpus luteum. In some of the sections they appeared to be some positive staining for ghrelin and GHSR-1a on the oocyte (especially in the larger oocytes). However, this finding was not consistent across



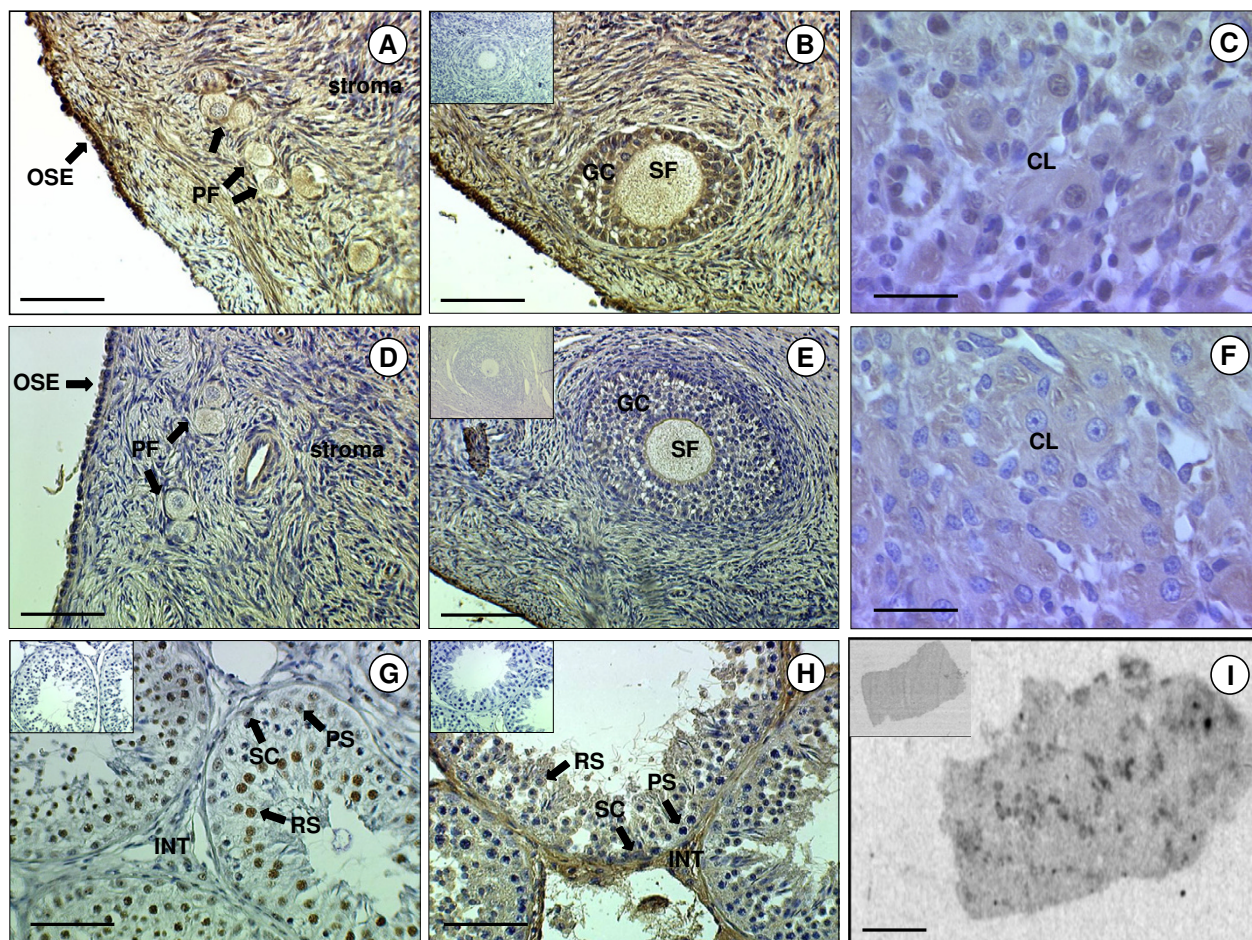


**Figure 2**  
**Immunohistochemical of ghrelin and GHSR-1a in the sheep brain.** Photomicrographs of sheep brain sections. (A) Hypothalamic section including the third ventricle (3V) showing positive staining for ghrelin in the median eminence (ME), arcuate nucleus (ARC) and ventromedial hypothalamus (VMH). (B) Hypothalamic section showing positive staining for GHSR-1a in the ME, ARC and VMH. (C) High magnification micrograph showing the staining for ghrelin in the VMH. (D) High magnification micrograph showing the staining for GHSR-1a in the VMH. (E) High magnification micrograph showing the staining for ghrelin in the ARC, ME and ependymal lining (EL) of the 3V. (F) High magnification micrograph showing the staining for GHSR-1a in the ARC, ME and EL. (G) Hindbrain section including the fourth ventricle (4V) showing positive staining for ghrelin in the nucleus of the tractus solitarius (NTS). (H) Hindbrain section showing positive staining for GHSR-1a in the NTS. (I) High magnification micrograph showing the staining for ghrelin in the NTS. (J) High magnification micrograph showing the staining for GHSR-1a in the NTS. The scale bars of A, B represent 150 μm, for C, D, E, F, G, H they represent 50 μm, and for I, J they represent 20 μm. The insert is the negative control.

all oocytes. In the adult testis, ghrelin immunostaining was predominant in the germ and Sertoli cells, with the germ cells showing intense perinuclear staining (Fig 3). Moreover, there appeared to be more intense ghrelin staining in the germ cells in all developmental stages prior

to the first meiotic division. Lower level immunostaining was also observed in the interstitial tissue (where Leydig cells are localised: Fig 3g). GHSR-1a protein was also detected in cord Sertoli, and germ cells. (Fig 3h, Fig 4c,d). In contrast to ghrelin, staining for the receptor appeared





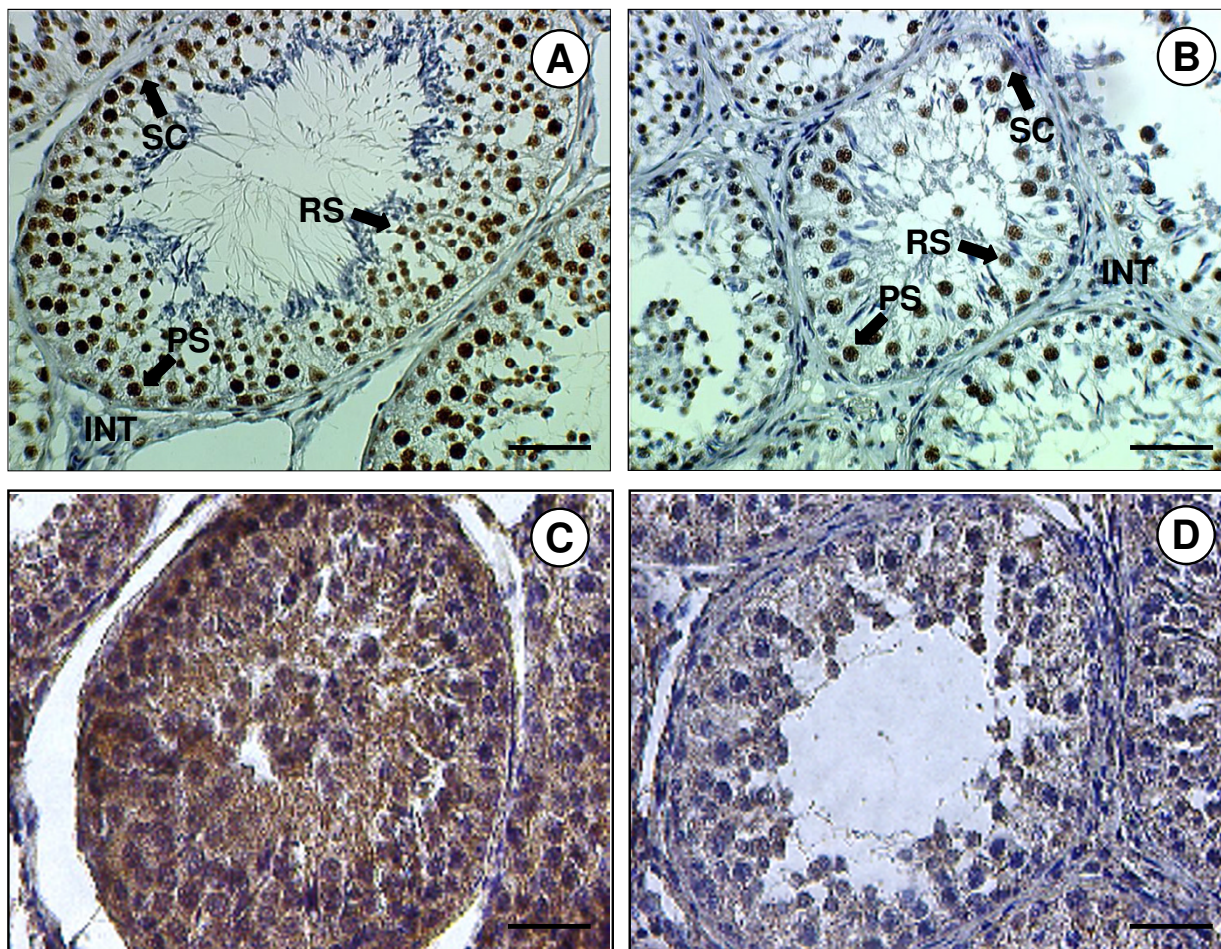
**Figure 3**  
**Immunohistochemical and *in situ* localisation of ghrelin and GHSR-1a in sheep gonads.** Photomicrographs of sheep ovarian and testicular sections. (A) Ovarian section showing positive immunostaining for ghrelin in the stroma, primordial follicles (PF) and the ovarian surface epithelium (OSE). (B) Ovarian section showing positive immunostaining for ghrelin in secondary follicles (SF) and granulosa cells (GC). (C) High magnification micrograph showing positive immunostaining for ghrelin in the corpus luteum (CL). (D) Ovarian section showing positive immunostaining for GHSR-1a in the stroma, PF and OSE. (E) Ovarian section showing positive immunostaining for GHSR-1a in the SF and GC. (F) High magnification micrograph showing positive immunostaining for GHSR-1a in the CL. (G) Testicular section of seminiferous tubules showing positive immunostaining for ghrelin in the Sertoli cells (SC), pre-spermatogonia (PS), round spermatids (RS) and in the interstitium (INT). (H) Testicular section of seminiferous tubules showing positive immunostaining for GHSR-1a in the SC, PS, RS and INT. (I) Autoradiograph of adult testis sections following *in situ* hybridisation to an antisense <sup>35</sup>S-labelled riboprobe to GHSR-1a mRNA showing hybridisation mainly in the interstitial areas between the seminiferous tubules. The scale bars of A, B, D, E, I represent 50 μm, and for C, F, G, H they represent 150 μm. The insert is the negative control (*in situ* sense control for I).

to be more predominant in the interstitium (Fig 3h: GHSR-1a v Fig 3g: ghrelin). In addition, *in-situ* hybridisation for GHSR-1a mRNA showed clear rings of hybridisation within the testis, indicative of gene expression in the interstitial tissue around the seminiferous tubules (Fig. 3i).

**Effect of photoperiod on Ghrelin and GHSR-1a in the adult Soay testis**

Testis size was reduced in the LD group (data not shown), as expected [40]. Ghrelin and GHSR-1a immunostaining was demonstrated in germ, Sertoli and interstitial cells of adult Soay testes collected in both the short-day (SD:





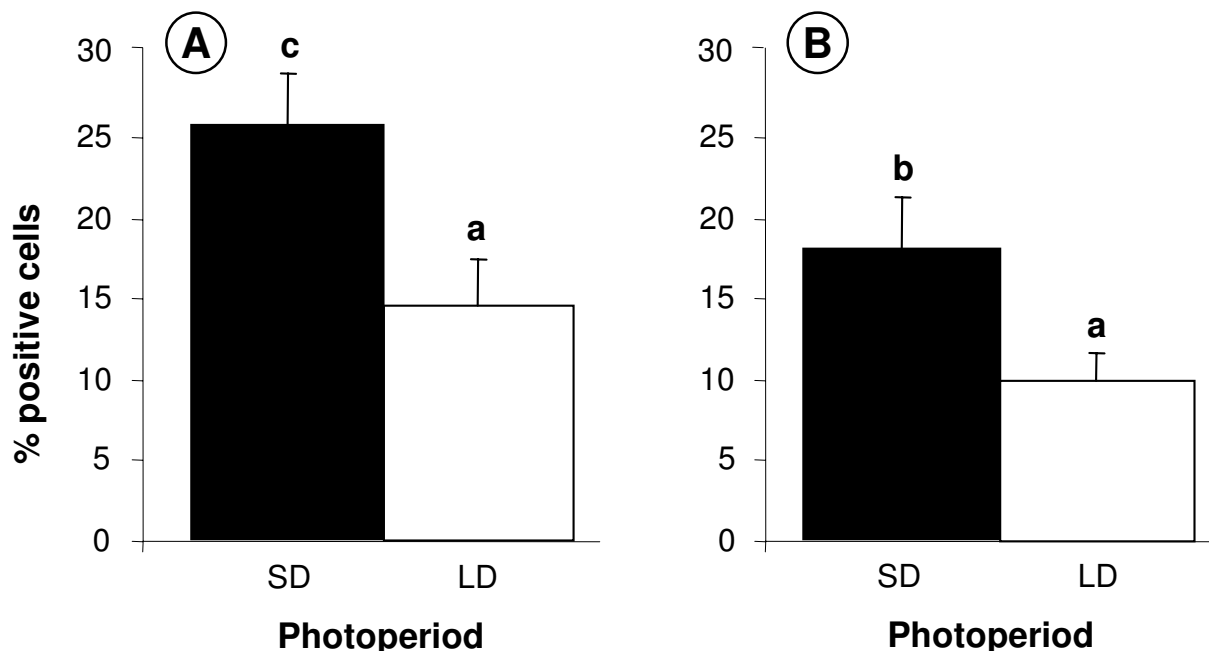
**Figure 4**  
**Immunolocalisation of ghrelin and GHSR-1a in the testes from adult sheep maintained in either short- or long-day photoperiods.** Photomicrographs of adult sheep testicular sections kept for 12 weeks in either a short day (SD) or long day photoperiod (LD). (A) Section from a SD sheep showing positive staining for ghrelin in the interstitium (INT), Sertoli cells (SC), pre-spermatogonia (PS) and round spermatids (RS). (B) Section from a LD sheep showing reduced staining for ghrelin in the testis compared to the SD sheep. (C) Section from a SD sheep showing positive staining for GHSR-1a. (D) Section from a LD sheep showing reduced staining for GHSR-1a in the testis compared to the SD sheep. (E) The scale bars of A, B, D, E represent 50  $\mu$ m.

reproductively active) and long-day (LD: reproductively regressed) photoperiods (Fig. 4). Comparison between the two groups indicated that the number of ghrelin and ghrelin receptor positive cells was reduced in the testes from the LD (reproductively regressed) Soay rams. This was verified after statistical analysis of the image analysis data indicating a significant increase in immunostaining levels in the SD photoperiod for both ghrelin ( $p < 0.01$ ) and GHSR-1a ( $p < 0.05$ ) (Fig. 5). More detailed histological examination indicated that the decreased ghrelin staining was predominantly associated with reduced staining

of the testicular cords (Sertoli and germ cells). In contrast, photoperiod appeared to influence GHSR-1a staining in both the cords and interstitial areas.

#### **Ghrelin, GHSR-1a, SCF and PCNA in the fetal sheep testis**

The ovine fetal testis is visible as an outgrowth of undifferentiated cells from the mesonephros at gestational day 30 (Fig. 6a-d). At this stage it was impossible to visually differentiate between somatic and germ cells. At day 50 (Fig. 6e-h), small testicular cords were distinguishable towards the periphery of the gonadal tissue, and germ cells were



**Figure 5**  
**Effect of photoperiod on the percentage of cells positively immunostained for ghrelin and GHSR-1a in adult sheep testes.** Ghrelin (A) and GHSR-1a (B) in adult sheep testes (short days, SD versus long days, LD). Values with different alphabetical superscripts are significantly different to one another: a versus b =  $p < 0.05$ ; a versus c =  $p < 0.01$ . Values are means  $\pm$  S.E.M.

present surrounded by cells that will constitute the Sertoli cell population at a later gestational stage. At day 70 (Fig. 6i-l) the testicular cords were more pronounced. Germ and Sertoli cells were identifiable within the cords. Interstitial cells, probably Leydig cells and their precursors, were clearly identifiable.

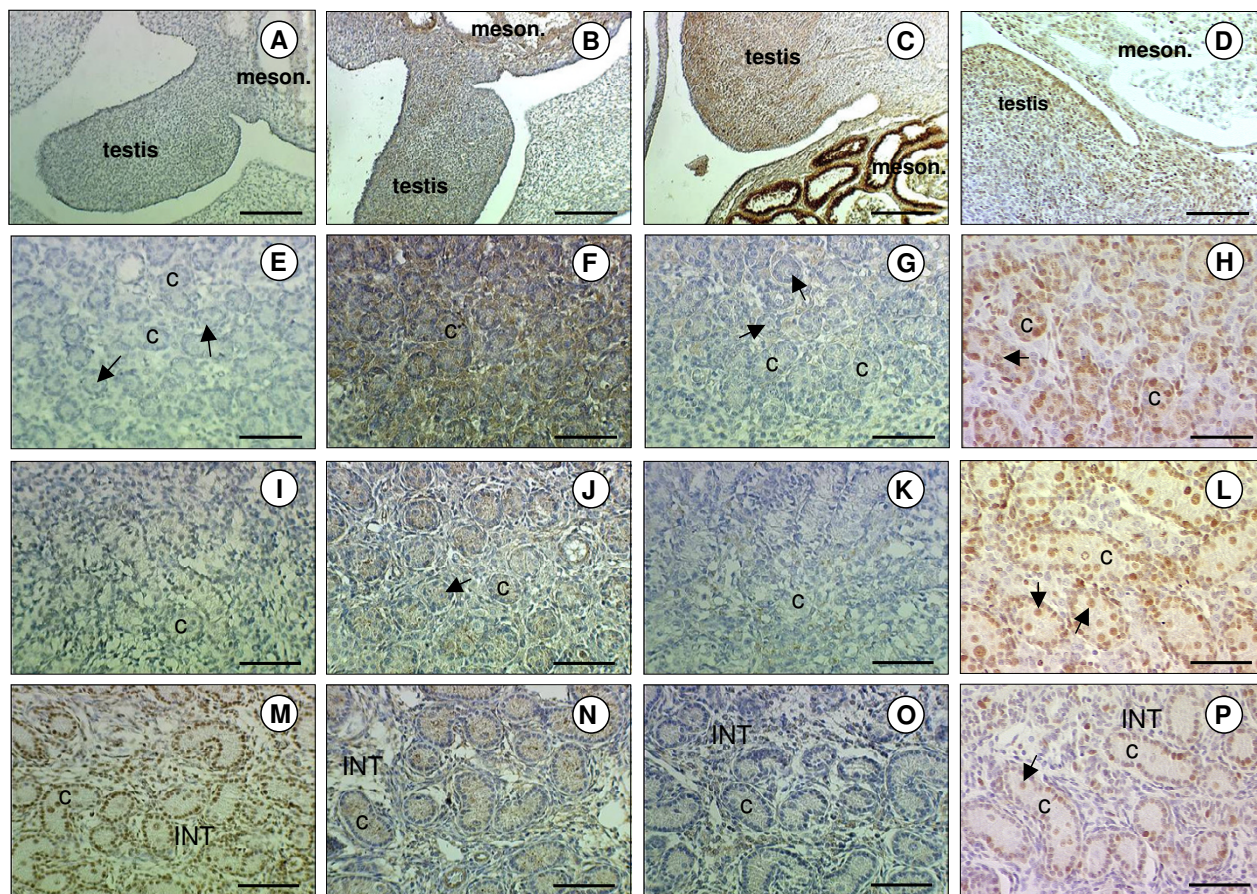
At day 30, low level immunostaining for ghrelin was observed in the gonadal/mesonephros complex (Fig. 6a). From day 70 (Fig. 6i) onwards ghrelin staining intensity increased, and at day 140 (Fig. 6m), ghrelin was clearly localised to the Sertoli, germ and some interstitial cells. Maximum GHSR-1a immunostaining intensity was evident at day 50 (Fig. 6b), although lower levels were present at all other gestational time points. From day 70 onwards, positive staining for GHSR-1a was restricted to the Sertoli and interstitial cells (Fig. 6j,n)

Cells stained for SCF were most prominent in the fetal testis at day 30 (Fig. 6c). The later gestational stages appeared to have fewer cells of lower staining intensity. From day 70 onwards SCF immunopositive cells were localised to the interstitium and to the endothelial cells of the blood vessels. PCNA-immunopositive cells were detected in the

gonadal/mesonephros complex at day 30 (Fig. 6d) and was predominantly localised to the seminiferous cords at the later gestational ages examined. Positive PCNA staining was seen in the Sertoli and germ cells and staining was also evident in the Leydig cell containing interstitial area (Fig. 6h,l,p).

There was a significant overall effect of gestational age on the immunostaining levels of ghrelin in the fetal testis (Fig. 7a:  $p < 0.001$ ), GHSR-1a (Fig. 7b:  $p < 0.05$ ), SCF (Fig. 7c:  $p < 0.05$ ) and PCNA (Fig. 7d:  $p < 0.01$ ). At day 30, ghrelin staining levels were about 2 times higher ( $p < 0.05$ ) than the nadir levels at days 40 and 50. From days 70 to 140, ghrelin staining levels increased reaching peak fetal levels at day 140 that were about 7 times higher than the nadir level at day 40 ( $p < 0.005$ ). In comparison, GHSR-1a immunostaining intensity levels appeared to have the opposite temporal pattern to ghrelin, with the peak levels at days 40 to 50, which were about 3 to 4 times higher than at any other time during gestation ( $p < 0.05$ ). The fetal staining intensity pattern for SCF was similar to ghrelin, with immunostaining intensity levels at day 30 being 3 to 4 times higher than the nadir levels at day 40 to 50 of gestation ( $p < 0.05$ ), whilst the staining intensity





**Figure 6**  
**Immunolocalisation of ghrelin and GHSR-1a in fetal sheep testes.** Photomicrographs of fetal sheep testicular sections. (A, B, C, D) Sections from fetuses at day 30 of gestation showing positive immunostaining for ghrelin (A), GHSR-1a (B), SCF (C) and PCNA (D) in the fetal testis and mesonephros (meson.). (E, F, G, H) Testicular sections from fetuses at day 50 of gestation showing positive immunostaining for ghrelin (E), GHSR-1a (F), SCF (G) and PCNA (H). (I, J, K, L) Testicular sections from fetuses at day 70 of gestation showing positive immunostaining for ghrelin (I), GHSR-1a (J), SCF (K) and PCNA (L). (M, N, O, P) Testicular sections from fetuses at day 140 of gestation showing positive immunostaining for ghrelin (M), GHSR-1a (N), SCF (O) and PCNA (P) in the seminiferous cords (C) and interstitium (INT). Arrows depict germ cells. The scale bars of A, B, C, D represent 150  $\mu\text{m}$ , and for the rest they represent 100  $\mu\text{m}$ .

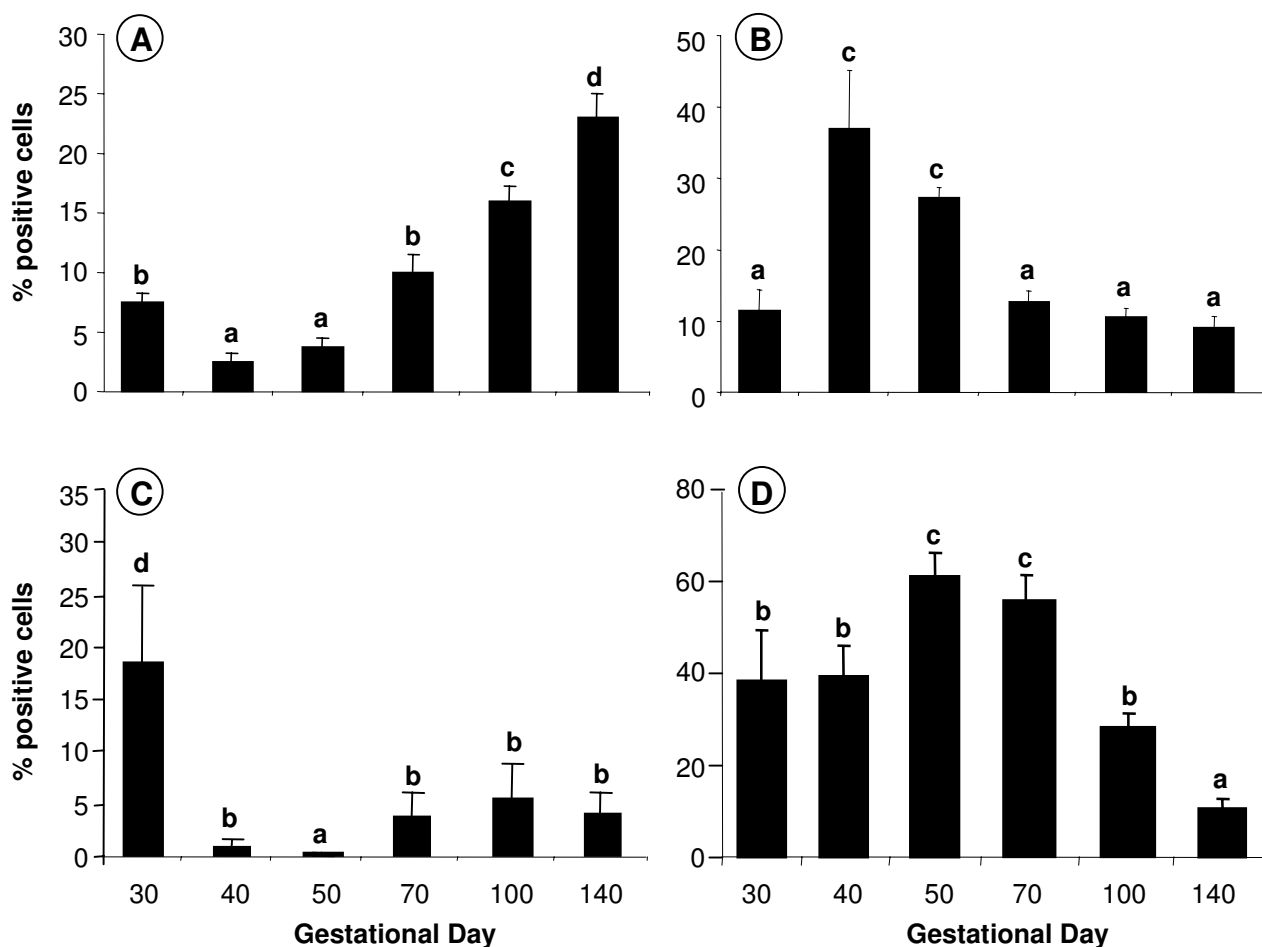
pattern for PCNA was similar to GHSR-1a, with immunostaining intensity levels peaking at day 50 to 70, which were about 50 to 80% higher than at days 30, 40 and 100 ( $p < 0.05$ ), and about 4 times higher than at day 140 ( $p < 0.01$ ).

**Discussion**

The present study provides immunohistochemical evidence for the presence of ghrelin and its functional receptor, growth hormone secretagogue receptor (GHSR-1a), in reproductive tissues of the sheep. Novel data are presented that indicate that ghrelin and its functional receptor, GHSR-1a, are regulated during development of the ovine fetal testis and by seasonal developmental changes in the

adult testis. Moreover, the developmental pattern of expression corresponds with the postulate by Barreiro and colleagues [39] that the ghrelin system is linked to the proliferative activity of germ and somatic cells in the testis.

In the sheep brain, ghrelin and GHSR-1a immunoreactivity were demonstrated in the hypothalamic region, including the median eminence (ME), arcuate nucleus (ARC), ventromedial hypothalamus (VMH) and ependymal lining (EL) of the third cerebral ventricle. The presence of ghrelin and GHSR-1a in the hypothalamus is consistent with its role in the regulation of food intake [48]. However, the hypothalamic localisation also corresponds with ghrelin's putative role in the control of LH



**Figure 7**  
**Effect of gestational age on the percentage of fetal testicular cells positively immunostained for ghrelin, GHSR-1a, SCF and PCNA.** Ghrelin (A), GHSR-1a (B), SCF (C) and PCNA (D) in fetal sheep testes (days 30 – 140 of gestation; n = 7 at each gestational age). Values with different alphabetical superscripts are significantly different to one another: a versus b, b versus c, and c versus d =  $p < 0.05$ ; a versus c, and b versus d =  $p < 0.01$ ; a versus d =  $p < 0.005$ . Values are means  $\pm$  S.E.M.

secretion, as neurons that secrete gonadotrophin-releasing hormone (GnRH) are also located in these hypothalamic regions [49,50]. Central administration of ghrelin has been shown to rapidly suppress pulsatile LH secretion in ovariectomized rats [8]. Ghrelin and GHSR-1a mRNA and protein [2,9-11,51-53] have previously been found in the rat and human hypothalamus. In the sheep hindbrain, ghrelin and GHSR-1a immunostaining was also identified in neuronal cell bodies within the nucleus tract solitarius (NTS), but not in the area postrema. Similarly, an immunohistochemical study in rats by Lin et al. [54] revealed that the GHSR-1a was expressed in the neuronal cells of the NTS and the dorsal motor nucleus of the vagus, but not in the cells of the area postrema. Using c-fos immunohistochemistry, Lawrence et al. [55] demonstrated that central ghrelin administration activated two regions of the

brainstem, the NTS and the area postrema. It is tempting to speculate that ghrelin may affect food intake and the neuroendocrine system at the level of the NTS, a central nervous system (CNS) site that receives primary vagal afferent input from the digestive tract and acts as a neuronal relay station to the hypothalamus [56]. However, it could also be possible that ghrelin is simply participating in the central regulation of gastric acid secretion via the vagus system. ICV administration of ghrelin in rats increases gastric acid output in a dose-dependent manner, and vagotomy and the administration of atropine abolishes gastric acid secretion induced by ghrelin [57].

In the sheep anterior pituitary gland, ghrelin and GHSR-1a were ubiquitously expressed. Ghrelin gene expression has been found in the pituitary glands of rodents, pigs and

humans [13,21,58]. It is evident from the literature that the main action of ghrelin at the level of the pituitary is the release of GH [59,60]. Indeed, GH secretagogue receptors were first identified in the pituitary by the ability of enkephalin analogues to stimulate GH release [60]. However, ghrelin may also be involved in somatotroph cell differentiation since ghrelin regulates pituitary-specific transcription factor (Pit-1) expression in the rat pituitary [62]. Somatotroph cell-specific expression of the GH gene is dependent on Pit-1 [63,64]. Ghrelin has also been shown to exert a proliferative effect on a rat pituitary somatotroph cell line via the mitogen-activated protein kinase (MAPK) pathway [27]. Interestingly, ghrelin may also play a role in LH secretion at the level of the pituitary as it has been shown that ghrelin stimulates gonadotrophin release from rat pituitary cells *in vitro* [7]. Particularly evident in the sheep pituitary tissue was the finding that GHSR-1a immunoreactivity in some cells of the pituitary showed intense perinuclear staining. This staining pattern may arise if the polyclonal antibody is detecting the ligand/receptor complex and is consistent with the finding of Camina et al. [65] that the ghrelin/GHSR-1a complex progressively disappears from the plasma membrane after binding of the ligand and accumulates in the perinuclear region.

Ghrelin and GHSR-1a immunostaining were detected in sheep ovarian follicles at all developmental stages, mainly in the granulosa cells. Caminos et al. [13] and Gaytan et al. [14] also found immunoreactivity for ghrelin and its receptor in the rat and human ovary, though only weak ghrelin staining was evident in the follicles. Strong ghrelin and GHSR-1a immunostaining was evident in corpora lutea (CL) of the sheep ovary, similar to the findings in the rat and human CL. Caminos et al. [13] found dynamic changes in the profile of ghrelin expression during the oestrous cycle and throughout pregnancy in rats, suggesting a precise regulation of ovarian expression of ghrelin. Gaytan and colleagues [14] have suggested a potential, yet unproven relationship between GHSR-1a expression and follicle growth, since expression of the receptor in somatic cells derived from ovarian follicles roughly parallels follicular development in the human ovary. There was additional evidence for ghrelin and GHSR-1a peptide expression within the ovarian surface epithelium (OSE) in the present study. Gaytan et al. [66] have also recently shown GHSR-1a peptide expression in human OSE. During ovulatory cycles the OSE is subject to a series of injury and repair processes associated with follicular rupture and CL formation, which involve natural inflammatory events. Pro-inflammatory IL-1 $\alpha$  produces an increase in mRNA levels of 11 $\beta$ hydroxysteroid dehydrogenase type 1 (11 $\beta$ HSD1) in OSE cells, encoding the steroid dehydrogenase that reversibly reduces cortisone to anti-inflammatory cortisol [67]. Tan and colleagues [68] have

recently demonstrated the ability of ghrelin to stimulate 11 $\beta$ HSD1 in the human ovary, providing evidence to support the theory that ghrelin plays an immunomodulatory role in OSE cells of the ovary via an anti-inflammatory action.

In the adult sheep testis, strong ghrelin immunostaining was evident in the interstitial area where Leydig cells are localised. Staining was also present in the germ and Sertoli cells, with an indication of increased ghrelin immunoreactivity in the germ cells during the mitotic phases and meiotic pro-phases of the spermatogenic cycle. GHSR-1a protein was detected in the interstitial Leydig cell containing area of the testis, as well as in the Sertoli and germ cells within the tubules, and the pattern of GHSR-1a mRNA expression across the testis indicated that the mRNA was present in the interstitial area and around the periphery of the tubules. Ghrelin immunostaining has been demonstrated in interstitial Leydig cells and, at lower intensity, in Sertoli cells of the rat [15]. Ghrelin and its receptor are present in the human testis, but in contrast to the ovine data, ghrelin protein is not detectable in germ cells at any stage of spermatogenesis [21]. There appears, therefore, to be some species differences in the localisation of ghrelin protein in the testis. Ghrelin has been shown to dose-dependently inhibit testicular testosterone secretion *in vitro*, and to modulate Leydig cell proliferation *in vivo* and the expression of relevant testicular genes, such as that encoding stem cell factor (SCF) [69]. In the testicular samples collected from Soay rams maintained in different photoperiods (short day = reproductively active, and long day = reproductively regressed), it was evident that ghrelin and GHSR-1a were up-regulated in the short-day photoperiod. This finding corresponds with the postulated role of ghrelin in the proliferation of somatic and germ cells in the testis [15,30]. It has been suggested that the expression of ghrelin peptide in mature Leydig cells in the rat testis is under the hormonal regulation of pituitary LH [12]. Whether this action is carried out directly, or is mediated by LH-driven locally produced factors, such as testosterone, requires further investigation. It is pertinent that this observation accompanies an increase in testis size which characterises reproductively active animals [40].

In the fetal sheep testis, the present findings indicate that the expression of ghrelin and GHSR-1a protein is linked to gestational age. Differentiation of the fetal gonad begins with the development of the gonadal ridges from thickening of the ventrolateral surface of the embryonic mesonephros. The genital ridge is composed of somatic cells from the mesonephros and migratory primordial germ cells originating from the extraembryonic mesoderm. In the fetal sheep, morphological sexual differentiation of the gonads begins around day 27 of gestation, and germ cell migration is complete just after day 30

[70,71]. In the present study, significant levels of ghrelin and SCF were found in the gonad/mesonephros complex at day 30 of gestation. Ghrelin has been implicated in proliferative activity in a number of tissues, including the gonad [27-29,39]. SCF is also said to be involved in proliferation, germ cell migration and survival [72]. Therefore, ghrelin and SCF may be involved in the early differentiation of the ovine fetal testis. Intratesticular injection of ghrelin has also been shown to decrease the proliferative activity of differentiating immature Leydig cells in the rat, and this response is associated with a decrease in the mRNA levels of SCF, a putative regulator of Leydig cell development [39]. In the fetal sheep, Leydig cell hyperplasia occurs between day 50 and 70 of gestation [73]. In the present study it was noted that at day 50, GHSR-1a and PCNA were significantly up-regulated at the same gestational time-point when SCF protein levels were at their lowest, i.e. at the start of Leydig cell hyperplasia. These data are consistent with the putative involvement of fetal testicular ghrelin and its functional receptor in the paracrine regulation of Leydig and germ cell development, possibly via interactions with SCF and PCNA.

### Conclusion

The present data indicate that both components (ligand and receptor) of the ghrelin signalling system are present in tissues of the reproductive axis of the sheep. The ligand and receptor are developmentally regulated in the fetal testis and physiologically regulated by photoperiod in the adult testis. These findings are consistent with both a central endocrine role and a potential peripheral paracrine/endocrine regulatory role for ghrelin in the control of reproductive tissue development and function in sheep. Further studies are needed to identify the precise functional role of the ghrelin system in the reproductive axis.

### Authors' contributions

DWM participated in the design of the studies, collection of tissues, all immunological analyses, statistical analyses and drafting the manuscript. JLH participated in the design of the studies, collection of tissues, immunological and *in situ* analyses of ghrelin and GHSR-1a, statistical analyses and drafting the manuscript. YAB participated in the immunological analysis of GHSR-1a, statistical analysis and drafting the manuscript. UD participated in the immunological analysis of SCF, statistical analysis and drafting the manuscript. AL participated in the immunological analysis of PCNA, statistical analysis and drafting the manuscript. RGL participated in the design of the studies, all immunological analyses, statistical analyses and drafting the manuscript. CLA participated in the design of the studies, collection of tissues, *in situ* analysis, statistical analyses and drafting the manuscript.

### Acknowledgements

The authors of this article would like to thank Lisa Hannah and Patricia Findlay for help with tissue collection, immunohistochemical and *in situ* analyses, and Dr A. Nigel Brooks at ZENECA Central Toxicology Laboratory, Macclesfield, Cheshire, UK, for kindly providing the fetal testicular tissue samples. The polyclonal antibody for ovine SCF was kindly supplied by Dr Ken McNatty, Wallaceville Animal Research Station, Upper Hutt, New Zealand, and the GHSR-1a cDNA was generously provided by Dr Zoe Archer, Rowett Research Institute.

### References

- Hayashida T, Murakami K, Mogi K, Nishihara M, Nakazato M, Mondal MS, Horii Y, Kojima M, Kangawa K, Murakami N: **Ghrelin in domestic animals: distribution in stomach and its possible role.** *Domest Anim Endocrinol* 2001, **21**:17-24.
- Kojima M, Hosoda H, Date Y, Nakazato M, Matsuo H, Kangawa K: **Ghrelin is a growth-hormone-releasing acylated peptide from stomach.** *Nature* 1999, **402**:656-660.
- Arvat E, Broglio F, Aimaretti G, Benso A, Giordano R, Deghenghi R, Ghigo E: **Ghrelin and synthetic GH secretagogues.** *Best Pract Res Clin Endocrinol Metab* 2002, **16**:505-517.
- Cummings DE, Shannon MH: **Roles for ghrelin in the regulation of appetite and body weight.** *Arch Surg* 2003, **138**:389-396.
- Hosoda H, Kojima M, Kangawa K: **Ghrelin and the regulation of food intake and energy balance.** *Mol Interv* 2002, **2**:494-503.
- Sugino T, Hasegawa Y, Kurose Y, Kojima M, Kangawa K, Terashima Y: **Effects of ghrelin on food intake and neuroendocrine function in sheep.** *Anim Reprod Sci* 2004, **82-83**:183-194.
- Fernandez-Fernandez R, Tena-Sempere M, Aguilar E, Pinilla L: **Ghrelin effects on gonadotropin secretion in male and female rats.** *Neurosci Lett* 2004, **362**:103-107.
- Furuta M, Funabashi T, Kimura F: **Intracerebroventricular administration of ghrelin rapidly suppresses pulsatile luteinizing hormone secretion in ovariectomized rats.** *Biochem Biophys Res Commun* 2001, **288**:780-785.
- Cowley MA, Smith RG, Diano S, Tschop M, Pronchuk N, Grove KL, Strasburger CJ, Bidlingmaier M, Esterman M, Heiman ML, Garcia-Segura LM, Nilini EA, Mendez P, Low MJ, Sotonyi P, Friedman JM, Liu H, Pinto S, Colmers WF, Cone RD, Horvath TL: **The distribution and mechanism of action of ghrelin in the CNS demonstrates a novel hypothalamic circuit regulating energy homeostasis.** *Neuron* 2003, **37**:649-661.
- Lu S, Guan JL, Wang QP, Uehara K, Yamada S, Goto N, Nakazato M, Kojima M, Kangawa K, Shioda S: **Immunocytochemical observation of ghrelin-containing neurons in the rat arcuate nucleus.** *Neurosci Lett* 2002, **321**:157-160.
- Mozid AM, Tringali G, Forsling ML, Hendricks MS, Ajodha S, Edwards R, Navarra P, Grossman AB, Korbonits M: **Ghrelin is released from rat hypothalamic explants and stimulates corticotrophin-releasing hormone and arginine-vasopressin.** *Horm Metab Res* 2003, **35**:455-459.
- Barreiro ML, Gaytan F, Caminos JE, Pinilla L, Casanueva FF, Aguilar E, Dieguez C, Tena-Sempere M: **Cellular location and hormonal regulation of ghrelin expression in rat testis.** *Biol Reprod* 2002, **67**:1768-1776.
- Caminos JE, Tena-Sempere M, Gaytan F, Sanchez-Criado JE, Barreiro ML, Nogueiras R, Casanueva FF, Aguilar E, Dieguez C: **Expression of ghrelin in the cyclic and pregnant rat ovary.** *Endocrinol* 2003, **144**:1594-1602.
- Gaytan F, Barreiro ML, Chopin LK, Herington AC, Morales C, Pinilla L, Casanueva FF, Aguilar E, Dieguez C, Tena-Sempere M: **Immunolocalization of ghrelin and its functional receptor, the type Ia growth hormone secretagogue receptor, in the cyclic human ovary.** *J Clin Endocrinol Metab* 2003, **88**:879-887.
- Gaytan F, Barreiro ML, Caminos JE, Chopin LK, Herington AC, Morales C, Pinilla L, Paniagua R, Nistal M, Casanueva FF, Aguilar E, Dieguez C, Tena-Sempere M: **Expression of ghrelin and its functional receptor, the type Ia growth hormone secretagogue receptor, in normal human testis and testicular tumors.** *J Clin Endocrinol Metab* 2004, **89**:400-409.
- Hashizume T, Horiuchi M, Tate N, Nonaka S, Kojima M, Hosoda H, Kangawa K: **Effects of ghrelin on growth hormone secretion from cultured adenohipophysial cells in cattle.** *Endocr J* 2003, **50**:289-295.



17. Miura H, Tsuchiya N, Sasaki I, Kikuchi M, Kojima M, Kangawa K, Hasegawa Y, Ohnami Y: **Changes in plasma ghrelin and growth hormone concentrations in mature Holstein cows and three-month-old calves.** *J Anim Sci* 2004, **82**:1329-1333.
18. Sugino T, Hasegawa Y, Kikkawa Y, Yamaura J, Yamagishi M, Kurose Y, Kojima M, Kangawa K, Terashima Y: **A transient ghrelin surge occurs just before feeding in a scheduled meal-fed sheep.** *Biochem Biophys Res Commun* 2002, **295**:255-260.
19. Sugino T, Yamaura J, Yamagishi M, Ogura A, Hayashi R, Kurose Y, Kojima M, Kangawa K, Hasegawa Y, Terashima Y: **A transient surge of ghrelin secretion before feeding is modified by different feeding regimens in sheep.** *Biochem Biophys Res Commun* 2002, **298**:785-788.
20. Sugino T, Yamaura J, Yamagishi M, Kurose Y, Kojima M, Kangawa K, Hasegawa Y, Terashima Y: **Involvement of cholinergic neurons in the regulation of the ghrelin secretory response to feeding in sheep.** *Biochem Biophys Res Commun* 2003, **304**:308-312.
21. Gnanapavan S, Kola B, Bustin SA, Morris DG, McGee P, Fairclough P, Bhattacharya S, Carpenter R, Grossman AB, Korbonsits M: **The tissue distribution of the mRNA of ghrelin and subtypes of its receptor, GHS-R, in humans.** *J Clin Endocrinol Metab* 2002, **87**:2988-2991.
22. Kojima M, Hosoda H, Kangawa K: **Purification and distribution of ghrelin: the natural endogenous ligand for the growth hormone secretagogue receptor.** *Horm Res* 2001, **56**(Suppl 1):93-97.
23. Papotti M, Ghe C, Cassoni P, Catapano F, Deghenghi R, Ghigo E, Muccioli G: **Growth hormone secretagogue binding sites in peripheral human tissues.** *J Clin Endocrinol Metab* 2000, **85**:3803-3807.
24. Andreis PG, Malendowicz LK, Trejter M, Neri G, Spinazzi R, Rossi GP, Nussdorfer GG: **Ghrelin and growth hormone secretagogue receptor are expressed in the rat adrenal cortex: evidence that ghrelin stimulates the growth, but not the secretory activity of adrenal cells.** *FEBS Lett* 2003, **536**:173-179.
25. Baldanzi G, Filigheddu N, Cutrupi S, Catapano F, Bonissoni S, Fubini A, Malan D, Baj G, Granata R, Broglio F, Papotti M, Surico N, Bus-solino F, Isgaard J, Deghenghi R, Sinigaglia F, Prat M, Muccioli G, Ghigo E, Graziani A: **Ghrelin and des-acyl ghrelin inhibit cell death in cardiomyocytes and endothelial cells through ERK1/2 and PI 3-kinase/AKT.** *J Cell Biol* 2002, **159**:1029-1037.
26. Kim MS, Yoon CY, Jang PG, Park YJ, Shin CS, Park HS, Ryu JW, Pak YK, Park JY, Lee KU, Kim SY, Lee HK, Kim YB, Park KS: **The mitogenic and antiapoptotic actions of ghrelin in 3T3-L1 adipocytes.** *Mol Endocrinol* 2004, **18**:2291-301.
27. Nanzer AM, Khalaf S, Mozid AM, Fowkes RC, Patel MV, Burrin JM, Grossman AB, Korbonsits M: **Ghrelin exerts a proliferative effect on a rat pituitary somatotroph cell line via the mitogen-activated protein kinase pathway.** *Eur J Endocrinol* 2004, **151**:233-240.
28. Xia Q, Pang W, Pan H, Zheng Y, Kang JS, Zhu SG: **Effects of ghrelin on the proliferation and secretion of splenic T lymphocytes in mice.** *Regul Pept* 2004, **122**:173-178.
29. Zhang W, Lin TR, Hu Y, Fan Y, Zhao L, Stuenkel EL, Mulholland MW: **Ghrelin stimulates neurogenesis in the dorsal motor nucleus of the vagus.** *J Physiol* 2004, **559**:729-737.
30. Barreiro ML, Suominen JS, Gaytan F, Pinilla L, Chopin LK, Casanueva FF, Dieguez C, Aguilar E, Toppari J, Tena-Sempere M: **Developmental, stage-specific, and hormonally regulated expression of growth hormone secretagogue receptor messenger RNA in rat testis.** *Biol Reprod* 2003, **68**:1631-1640.
31. Mortimer D, Lincoln GA: **Ultrastructural study of regressed and reactivated testes from Soay rams.** *J Reprod Fertil* 1982, **64**:437-42.
32. Cortelazzi D, Cappiello V, Morpurgo PS, Ronzoni S, Nobile De Santis MS, Cetin I, Beck-Peccoz P, Spada A: **Circulating levels of ghrelin in human fetuses.** *Eur J Endocrinol* 2003, **149**:111-116.
33. Katayama M, Nogami H, Nishiyama J, Kawase T, Kawamura K: **Developmentally and regionally regulated expression of growth hormone secretagogue receptor mRNA in rat brain and pituitary gland.** *Neuroendocrinol* 2000, **72**:333-340.
34. Rindi G, Necchi V, Savio A, Torsello A, Zoli M, Locatelli V, Raimondo F, Cocchi D, Solcia E: **Characterisation of gastric ghrelin cells in man and other mammals: studies in adult and fetal tissues.** *Histochem Cell Biol* 2002, **117**:511-519.
35. Wierup N, Sundler F: **Circulating levels of ghrelin in human fetuses.** *Eur J Endocrinol* 2004, **150**:405.
36. Chanoine JP, Wong AC: **Ghrelin gene expression is markedly higher in fetal pancreas compared with fetal stomach: effect of maternal fasting.** *Endocrinol* 2004, **145**:3813-3820.
37. Desai M, Gayle D, Babu J, Ross MG: **Programmed obesity in intrauterine growth restricted newborns: Modulation by newborn nutrition.** *Am J Physiol Regul Integr Comp Physiol* 2004, **288**:R91-96.
38. Gualillo O, Caminos JE, Nogueiras R, Seoane LM, Arvat E, Ghigo E, Casanueva FF, Dieguez C: **Effect of food restriction on ghrelin in normal-cycling female rats and in pregnancy.** *Obes Res* 2002, **10**:682-687.
39. Barreiro ML, Gaytan F, Castellano JM, Suominen JS, Roa J, Gaytan M, Aguilar E, Dieguez C, Toppari J, Tena-Sempere M: **Ghrelin inhibits the proliferative activity of immature Leydig cells in vivo and regulates stem cell factor messenger RNA expression in rat testis.** *Endocrinol* 2004, **145**:4825-4834.
40. Archer ZA, Findlay PA, McMillen SR, Rhind SM, Adam CL: **Effects of nutritional status and gonadal steroids on expression of appetite-regulatory genes in the hypothalamic arcuate nucleus of sheep.** *J Endocrinol* 2004, **182**:409-419.
41. Sweeney T, Saunders PT, Millar MR, Brooks AN: **Ontogeny of anti-mullerian hormone, 3 beta-hydroxysteroid dehydrogenase and androgen receptor expression during ovine total gonadal development.** *J Endocrinol* 1997, **153**:27-32.
42. Tisdall DJ, Fidler AE, Smith P, Quirke LD, Stent VC, Heath DA, McNatty KP: **Stem cell factor and c-kit gene expression and protein localization in the sheep ovary during fetal development.** *J Reprod Fertil* 1999, **116**:277-291.
43. Lazarczyk MA, Lazarczyk M, Grzela T: **Ghrelin: a recently discovered gut-brain peptide (review).** *Int J Mol Med* 2003, **12**:279-87.
44. Smith RG, Leonard R, Bailey AR, Palyha O, Feighner S, Tan C, McKee KK, Pong SS, Griffin P, Howard A: **Growth hormone secretagogue receptor family members and ligands.** *Endocrine* 2001, **14**:9-14.
45. Mercer JG, Moar KM, Logie TJ, Findlay PA, Adam CL, Morgan PJ: **Seasonally inappropriate body weight induced by food restriction: effect on hypothalamic gene expression in male Siberian hamsters.** *Endocrinol* 2001, **142**:4173-4181.
46. Tups A, Helwig M, Khorrooshi RM, Archer ZA, Klingenspor M, Mercer JG: **Circulating ghrelin levels and central ghrelin receptor expression are elevated in response to food deprivation in a seasonal mammal (*Phodopus sungorus*).** *J Neuroendocrinol* 2004, **16**:922-928.
47. Murray TJ, Fowler PA, Abramovich DR, Haites N, Lea RG: **Human fetal testis: second trimester proliferation and steroidogenic capacities.** *J Endocr Metab* 2000, **85**:4812-4817.
48. Kojima M, Kangawa K: **Ghrelin, an orexigenic signaling molecule from the gastrointestinal tract.** *Curr Opin Pharmacol* 2002, **2**:665-668.
49. Blache D, Fabre-Nys C, Venier G: **Inhibition of sexual behaviour and the luteinizing hormone surge by intracerebral progesterone implants in the female sheep.** *Brain Res* 1996, **741**:117-122.
50. Strubbe JH, Mein CG: **Increased feeding in response to bilateral injection of insulin antibodies in the VMH.** *Physiol Behav* 1977, **19**:309-313.
51. Guan XM, Yu H, Palyha OC, McKee KK, Feighner SD, Sirinathsinghi DJ, Smith RG, Van der Ploeg LH, Howard AD: **Distribution of mRNA encoding the growth hormone secretagogue receptor in brain and peripheral tissues.** *Brain Res Mol Brain Res* 1997, **48**:23-29.
52. Kim MS, Yoon CY, Park KH, Shin CS, Park KS, Kim SY, Cho BY, Lee HK: **Changes in ghrelin and ghrelin receptor expression according to feeding status.** *Neuroreport* 2003, **14**:1317-1320.
53. Shuto Y, Shibasaki T, Wada K, Parhar I, Kamegai J, Sugihara H, Oikawa S, Wakabayashi I: **Generation of polyclonal antiserum against the growth hormone secretagogue receptor (GHS-R): evidence that the GHS-R exists in the hypothalamus, pituitary and stomach of rats.** *Life Sci* 2001, **68**:991-996.
54. Lin Y, Matsumura K, Fukuhara M, Kagiyama S, Fujii K, Iida M: **Ghrelin acts at the nucleus of the solitary tract to decrease arterial pressure in rats.** *Hypertension* 2004, **43**:977-982.

55. Lawrence CB, Snape AC, Baudoin FM, Luckman SM: **Acute central ghrelin and GH secretagogues induce feeding and activate brain appetite centers.** *Endocrinol* 2002, **143**:155-162.
56. Schwartz GJ, Moran TH: **Leptin and neuropeptide Y have opposing modulatory effects on nucleus of the solitary tract neurophysiological responses to gastric loads: implications for the control of food intake.** *Endocrinol* 2002, **143**:3779-3784.
57. Date Y, Nakazato M, Murakami N, Kojima M, Kangawa K, Matsukura S: **Ghrelin acts in the central nervous system to stimulate gastric acid secretion.** *Biochem Biophys Res Commun* 2001, **280**:904-907.
58. Salfen BE, Carroll JA, Keisler DH: **Endocrine responses to short-term feed deprivation in weanling pigs.** *J Endocrinol* 2003, **178**:541-551.
59. Tolle V, Zizzari P, Tomasetto C, Rio MC, Epelbaum J, Bluet-Pajot MT: **In vivo and in vitro effects of ghrelin/motilin-related peptide on growth hormone secretion in the rat.** *Neuroendocrinol* 2001, **73**:54-61.
60. Yamazaki M, Nakamura K, Kobayashi H, Matsubara M, Hayashi Y, Kangawa K, Sakai T: **Regulatory effect of ghrelin on growth hormone secretion from perfused rat anterior pituitary cells.** *J Neuroendocrinol* 2002, **14**:156-162.
61. Howard AD, Feighner SD, Cully DF, Arena JP, Liberators PA, Rosenblum CI, Hamelin M, Hreniuk DL, Palyha OC, Anderson J, Paress PS, Diaz C, Chou M, Liu KK, McKee KK, Pong SS, Chaung LY, Elbrecht A, Dashkevich M, Heavens R, Rigby M, Sirinathsinghji DJ, Dean DC, Melillo DG, Van der Ploeg LH: **A receptor in pituitary and hypothalamus that functions in growth hormone release.** *Science* 1996, **273**:974-977.
62. Garcia A, Alvarez CV, Smith RG, Dieguez C: **Regulation of Pit-1 expression by ghrelin and GHRP-6 through the GH secretagogue receptor.** *Mol Endocrinol* 2001, **15**:1484-1495.
63. Bodner M, Castrillo JL, Theill LE, Deerinck T, Ellisman M, Karin M: **The pituitary-specific transcription factor GHF-1 is a homeobox-containing protein.** *Cell* 1988, **55**:505-518.
64. Ingraham HA, Chen RP, Mangalam HJ, Elsholtz HP, Flynn SE, Lin CR, Simmons DM, Swanson L, Rosenfeld MG: **A tissue-specific transcription factor containing a homeodomain specifies a pituitary phenotype.** *Cell* 1988, **55**:519-529.
65. Camina JP, Carreira MC, El Messari S, Llorens-Cortes C, Smith RG, Casanueva FF: **Desensitization and endocytosis mechanisms of ghrelin-activated growth hormone secretagogue receptor 1a.** *Endocrinol* 2004, **145**:930-940.
66. Gaytan F, Morales C, Barreiro ML, Jeffery P, Chopin LK, Herington AC, Casanueva FF, Aguilar E, Dieguez C, Tena-Sempere M: **Expression of growth hormone secretagogue receptor type 1a, the functional ghrelin receptor, in human ovarian surface epithelium, mullerian duct derivatives, and ovarian tumors.** *J Clin Endocrinol Metab* 2005, **90**:1798-1804.
67. Rae MT, Niven D, Critchley HO, Harlow CR, Hillier SG: **Antiinflammatory steroid action in human ovarian surface epithelial cells.** *J Clin Endocrinol Metab* 2004, **89**:4538-4544.
68. Tan TM-M, Jonas KC, Thurston LM, Vanderpump MP, Hardiman PJ, Michael AE: **Ghrelin is a potential paracrine stimulator of 11beta-hydroxysteroid dehydrogenase (11βHSD) in the human ovary.** *Reprod Abst Series* 2004, **30**:P96.
69. Tena-Sempere M: **Exploring the role of ghrelin as novel regulator of gonadal function.** *Growth Horm IGF Res* 2005, **15**:83-88.
70. McNatty K, Smith P, Hudson N, Heath D, Tisdall DOW, BrawTal R: **Development of the sheep ovary during fetal and early neonatal life and the effect of fecundity genes.** *J Reprod Fert* 1995, **49**(Suppl):123-135.
71. Peers A, Hantzis V, Dodic M, Koukoulas I, Gibson A, Baird R, Salemi R, Wintour EM: **Functional glucocorticoid receptors in the mesonephros of the ovine fetus.** *Kidney Int* 2001, **59**:425-433.
72. De Felici M, Pesce M: **Growth factors in mouse primordial germ cell migration and proliferation.** *Prog Growth Factor Res* 1994, **5**:135-143.
73. Lea RG, Rae MT, Murray TJ, Brooks AN, Rhind SM, Fowler PA, Miller DW: **Developmental determinants of steroidogenesis in fetal sheep testis.** *J Endocrinol* 2000, **164**(Suppl):P305.

Publish with **BioMed Central** and every scientist can read your work free of charge

"BioMed Central will be the most significant development for disseminating the results of biomedical research in our lifetime."

Sir Paul Nurse, Cancer Research UK

Your research papers will be:

- available free of charge to the entire biomedical community
- peer reviewed and published immediately upon acceptance
- cited in PubMed and archived on PubMed Central
- yours — you keep the copyright

Submit your manuscript here:  
[http://www.biomedcentral.com/info/publishing\\_adv.asp](http://www.biomedcentral.com/info/publishing_adv.asp)

