

RESEARCH ARTICLE

Open Access

Daucus carota pentane-based fractions arrest the cell cycle and increase apoptosis in MDA-MB-231 breast cancer cells

Wassim N Shebaby¹, Mohammad Mroueh², Kikki Bodman-Smith¹, Anthony Mansour³, Robin I Taleb⁴, Costantine F Daher⁴ and Mirvat El-Sibai^{4*}

Abstract

Background: *Daucus carota* Lssp.carota (wild carrot), an herb used in folk medicine worldwide, was recently demonstrated to exhibit anticancer activity. In this study we examined the anticancer effect of *Daucus carota* oil extract (DCOE) fractions on the human breast adenocarcinoma cell lines MDA-MB-231 and MCF-7 and clarified the mechanism of action.

Methods and results: Using the WST assay, the pentane fraction (F1) and 1:1 pentane:diethyl ether fraction (F2) were shown to possess the highest cytotoxicity against both cell lines. Flow cytometric analysis revealed that both fractions induced the accumulation of cells in the sub-G1 phase, increase in apoptotic cell death and chromatin condensation. The increase in apoptosis in response to treatment was also apparent in the increase in BAX and the decrease in Bcl-2 levels as well as the proteolytic cleavage of both caspase-3 and PARP as revealed by Western blot. Furthermore, treatment of MDA-MB-231 cells with either fraction significantly reduced the level of phosphorylated Erk but did not show any effect on phosphorylated Akt. The combined treatment with a potent PI3K inhibitor (wortmannin) and F1 or F2 fraction had a synergistic inhibitory effect on cell survival which shows that these two drugs work on different pathways.

Conclusions: These results suggest that *the pentane-based fractions of DCOE possess potential anti-cancer activity that is mainly mediated through the Erk pathway.*

Keywords: *Daucus carota*, Breast cancer, Proliferation, Apoptosis, PI3K, MAPK

Background

Breast cancer is one of the most common cancers among women aged between 40–55 years, and is the leading cause of death in women globally [1]. The present treatment approaches, whether surgery, chemotherapy, immunotherapy or radiotherapy are usually accompanied with adverse effects, leaving the patient weak and vulnerable. Furthermore, acquired patient resistance to these treatments poses a continuing problem that compromises the effectiveness of anti-cancer therapy [2]. Therefore, there is a growing interest in finding more effective and selective anti-cancer remedies. The use of natural

therapeutic compounds of plant origin has been of interest to researchers for the past few decades. In fact, over 25% of pharmaceutical drugs used in medicine today are derived from plants [3]. For instance, plant secondary metabolites such as terpenes, phenolics and alkaloids, are extensively exploited in cancer research [4–9]. Currently, there are four classes of plant-derived anticancer compounds in clinical use: vinca alkaloids, epipodophyllotoxins, taxanes, and camptothecin derivatives [10].

Among the hallmarks of cancer cells are aberrant cell cycle and apoptosis regulation. Cancer cells are known to lose the ability to negatively regulate the cell cycle leading to their continuous proliferation [11] and also resist apoptosis even in the presence of apoptotic stimuli [12]. Accordingly, a wide range of phytochemicals derived from medicinal plants have been reported to

* Correspondence: mirvat.elsibai@lau.edu.lb

⁴Department of Natural Sciences, School of Arts and Sciences, Lebanese American University, P.O. Box 36, Byblos, Lebanon

Full list of author information is available at the end of the article

exhibit anticancer activity by targeting several signaling cascades associated with cell cycle regulation and apoptosis. These cascades include mitogenic signaling pathways, such as mitogen-activated protein kinases (MAPKs) [13], PI3K-Akt pathway [14] and nuclear kappa B pathway (NF- κ B) [15]. These alterations induced by phytochemicals are eventually correlated to the modulation of cell cycle and/or apoptosis of cancer cells [16].

Wild carrot, *Daucus carota* L. ssp. *carota*, is a spiny-fruited herb that grows in moderate regions throughout the world. The *Daucus carota* oil extract from various geographical locations constitutes mainly of monoterpenes, sesquiterpenes, and phenylpropanoids [17,18]. Unlike the edible carrot, *Daucus carota* L. ssp. *sativus*, few reports exist about the potential therapeutic use of the wild carrot. In European folk medicine, it is used as a urinary antiseptic and anti-inflammatory remedy for cystitis and prostatitis [19]. The plant has also been reported to possess antilithic, diuretic, [20,21] antibacterial, and antifungal activities [18,22,23]. Recent studies conducted in our laboratories, showed that *Daucus carota* oil extract (DCOE) exhibited anti-tumor [24,25], antioxidant [24], anti-inflammatory, and anti-ulcer [26] activities. The present study aims to evaluate the anticancer activity of DCOE fractions against MDA-MB-231 and MCF-7 human breast cancer cell lines and to elucidate possible mechanisms of action.

Methods

Reagents

Dulbecco's modified Eagle's medium (DMEM) and dimethyl sulfoxide (DMSO) were purchased from Sigma (St. Louis, USA). The Annexin V/PI apoptosis detection kit was purchased from Abcam (Cambridge, UK), and WST-1 reagent was purchased from Roche (Mannheim, Germany). All other chemicals used in this study were purchased from Sigma (St. Louis, USA) unless otherwise stated.

Sample collection and oil extraction

Daucus carota (Linnaeus) ssp. *carota* mature umbels were collected at the post flowering season between May and August from Byblos, Lebanon. The plant was identified according to the characteristics described in the "Handbook of Medicinal Herbs" [21] and confirmed by Dr. A. Hourri, a Lebanese plant expert at the Lebanese American University. A voucher specimen of the plant material used in this study has been deposited in a publicly available herbarium. The extraction procedure was carried out according to the method described by Zeinab et al. [25]. Briefly, umbels were air dried in the shade and then cut into small pieces for oil extraction in methanol/acetone (1:1) for 72 h. The extract was then filtered and evaporated to dryness under reduced pressure. The

residue was centrifuged and the oil was dried over anhydrous sodium sulfate. The final yield (3.47%) was stored in a closed amber bottle at 4°C until use.

DCOE fractionation

Thirty grams of DCOE were chromatographed on a silica gel column (35–70 mesh). The first fraction (F1) was eluted with pentane (100%), the second fraction (F2) with pentane: diethyl ether (50:50), the third fraction (F3) with diethyl ether (100%) and the fourth fraction (F4) with chloroform: methanol (93:7). Fractions were analyzed by TLC using hexane: ethyl acetate (70:30) as mobile phase and plates were stained with 2% anisaldehyde.

Cell lines and culture

Human breast adenocarcinoma cell lines MDA-MB-231 and MCF-7 were purchased from American Type Culture Collection (ATCC, Rockville). Both cell lines were cultured in a humidified incubator at 37°C and 5% CO₂ atmosphere in DMEM (Dulbecco's modified Eagle's medium), supplemented with 10% fetal bovine serum and 1% Penicillin-streptomycin.

Cell proliferation assay

The proliferation of the MDA-MB-231 and MCF-7 cells was tested using WST-1 assay. Cells were plated in 96-well plates at a concentration of 10⁵ cell/ml for 24 h. Both cell lines were then treated with increasing concentrations (10, 25, 50, and 100 μ g/ml) of the four DCOE fractions in DMSO for 48 h. At the end of the treatment period, WST-1 reagent was added to the cells and incubated in a humidified incubator at 37°C and 5% CO₂ atmosphere for 3 h. The intensity of the produced formazan was quantified at 450 nm using a microplate ELISA reader. For wortmannin treatment, MDA-MB-231 cells were incubated with or without wortmannin (1 μ M) for 1 h in a serum-free complete MEM prior to treating cells with 25 and 50 μ g/ml of F1 and F2 fractions for 48 h.

Apoptosis assay

The apoptotic effect of the most potent fractions F1 and F2 of DCOE on MDA-MB-231 cells was determined by Annexin V-FITC staining assay and measured by C6 flow cytometer (BD Accuri Cytometers, Ann Arbor, MI USA). The MDA-MB-231 cells (1 \times 10⁵ cells/ml) were treated with different concentrations (25 and 50 μ g/ml) of both fractions and cultured in 6-well plates for 48 h. Treated cells were harvested, washed with phosphate-buffer saline (PBS) and then centrifuged at 500 g for 5 min. Then cell pellet was suspended in 500 μ L of Annexin V-FITC/PI apoptosis detection kit at room temperature for 5 min in the dark. Annexin V-FITC binding was analyzed by flow cytometry (Ex = 488 nm; Em = 530 nm) FL1 channel

for detecting Annexin V-FITC staining and FL3 channel for detecting PI staining. Annexin V-positive, PI-negative cells were scored as early apoptotic, and double-stained cells were considered as late apoptotic.

DAPI and annexin V staining

MDA-MB-231 cells were seeded on 25 mm square glass cover slips. After treatment, cells were washed with PBS and fixed with 3.7% paraformaldehyde for 10 min at room temperature. Fixed cells were permeabilized with a 0.1% solution of Triton X-100 in PBS and then stained by Annexin V conjugated to FITC or with 1 µg/ml of DAPI solution for 20 min. The cells were washed with PBS and observed with fluorescence microscope.

Cell cycle analysis

The effect of F1 and F2 fractions on cell cycle distribution was assessed by flow cytometry after staining the MDA-MB-231 cells with propidium iodide (PI). Briefly, the MDA-MB-231 cells (1×10^5 cells/ml) were treated with different concentrations (25 and 50 µg/ml) of both fractions for 48 h. The treated cells were harvested, washed with PBS and fixed with 70% ethanol on ice. Then cells washed with cold PBS, suspended in 200 µL 1X Propidium Iodide + RNase staining solution and incubate at 37°C in the dark for 30 minutes. Propidium Iodide Flow Cytometry Kit was used for cell cycle analysis. DNA content of the cells was measured by C6 flow cytometer and the population of each phase was determined using CFlow Plus analysis software (BD Accuri Cytometers, Ann Arbor, MI USA).

Western blot

MDA-MB-231 cells were treated with different concentrations of F1 and F2 (25 and 50 µg/ml) for 48 h. The adherent and non-adherent MDA-MB-231 cells were collected on ice, washed twice with PBS, lysed with lysis buffer, and centrifuged at 12,000 g for 10 min at 4°C. The cell lysate was heated at 100°C for 5 min, and the protein content was determined by the Bio-Rad protein assay (Bio-Rad, Hercules, CA, USA). The same amount of proteins was loaded to a 10% SDS-PAGE. Proteins were then transferred to PVDF membrane (Pall Corporation, Ann Arbor, USA) and blocked with 5% skim milk for 2 h. The membranes were probed with primary antibodies against Actin, p53, Bcl-2, Bax, Caspase-3, PARP, Akt, p-Akt, Erk, and p-Erk (Abcam, Cambridge, USA) at 4°C overnight. Later, the primary antibodies were washed away with TBST for 1 h and the membranes were treated with HRP-coupled secondary antibodies (Promega Corp., Madison, USA) for 1 h, and washed with TBST afterwards. Finally, Detection of each protein was performed using the ECL kit (Abcam plc, 330 Cambridge Science Park, Cambridge UK).

Statistical analysis

Data was analyzed for statistical significance using one way analysis of variance (ANOVA). Values of the different tested parameters within each group are presented as mean ± SEM. Significant main effect differences were tested using Bonferroni post hoc test for multiple comparisons. All data were analyzed with the statistical package SPSS 18, and differences between groups were considered statistically significant if $p < 0.05$.

All experimental protocols were approved by the Animal Ethical Committee of the Lebanese American University, which complies with the Guide for the Care and Use of Laboratory Animals (Committee for the Update of the Guide for the Care and Use of Laboratory Animals, 2010).

Results

MDA-MB-231 and MCF-7 breast cancer cells were treated with different concentrations of fractions 1, 2, 3, and 4 of DCOE for 48 h (Figure 1). The treatment with the extract appeared to be dose-dependent with maximum inhibition of proliferation at higher concentrations (50 and 100 µg/ml). MCF-7 cells showed the least responsiveness to the extract when compared to its more malignant counterpart the MDA-MB-231 cell line. The IC_{50} values of the four fractions at 48 h were 22, 32, 48, and 43 µg/ml for MCF-7 and 17, 11, 27, and 23 µg/ml for MDA-MB-231. The pentane fraction (F1) and pentane/diethyl fraction (F2) showed the highest cytotoxicity against both cell lines with the lowest IC_{50} (Additional file 1: Table S1).

To determine whether growth inhibition by F1 and F2 on MDA-MB-231 human breast cancer cells was due to cell cycle arrest or apoptosis, the cells were stained with PI after permeabilization to look at the cell cycle profile or with Annexin and PI to look for apoptosis. As shown in Figure 2, treatment of MDA-MB-231 with F1 and F2 (25 and 50 µg/ml) for 48 h resulted in the increase of cell percentage in the sub-G1 phase with hypodiploid nuclei, indicating that both fractions could cause DNA fragmentation. This increase was coupled with the decreased percentage of cells in the S and G2/M phases. Figure 3 showed that cells treated with 25 µg/ml F1 or F2 were in early apoptosis whereas cells treated with 50 µg/ml went into late apoptosis. To further confirm the apoptotic effect of F1 and F2, control and treated MDA-MB-231 cells were stained with DAPI and annexin. Condensation of chromatin in nuclei was evident in cells treated with either dose of F1 (Figure 4A). Besides, annexin staining showed that both fractions induced the phosphatidylserine (PS) translocation in the cell membrane which is indicative of apoptosis followed by membrane leakage (Figure 4B).

To explore the mechanism by which F1 and F2 induced apoptosis, the expression levels of various pro-

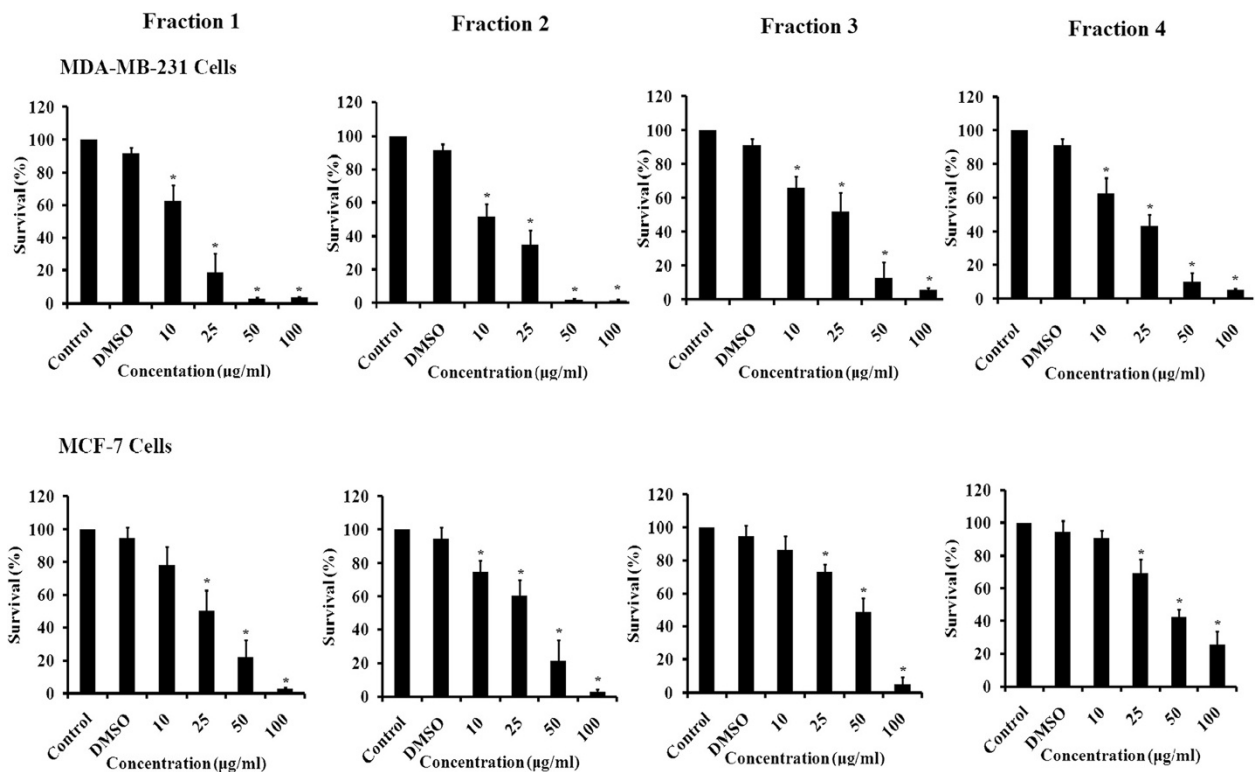


Figure 1 Effect of DCOE fractions on cell proliferation. MDA-MB-231 and MCF-7 cells were treated with DCOE fractions (F1, F2, F3, and F4) at concentrations of 10, 25, 50, and 100 µg/ml or with 0.5% DMSO for 48 h. Data are expressed as % survival of cells relative to control. Data are the mean ± SEM from three independent experiments. *denotes $P < 0.05$ versus DMSO group as measured by one-way ANOVA.

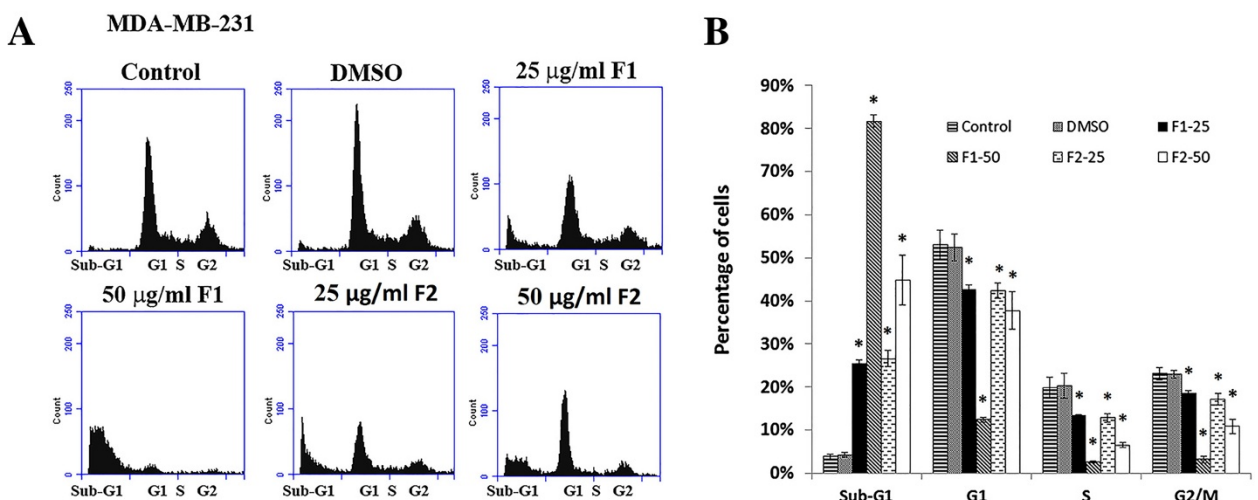
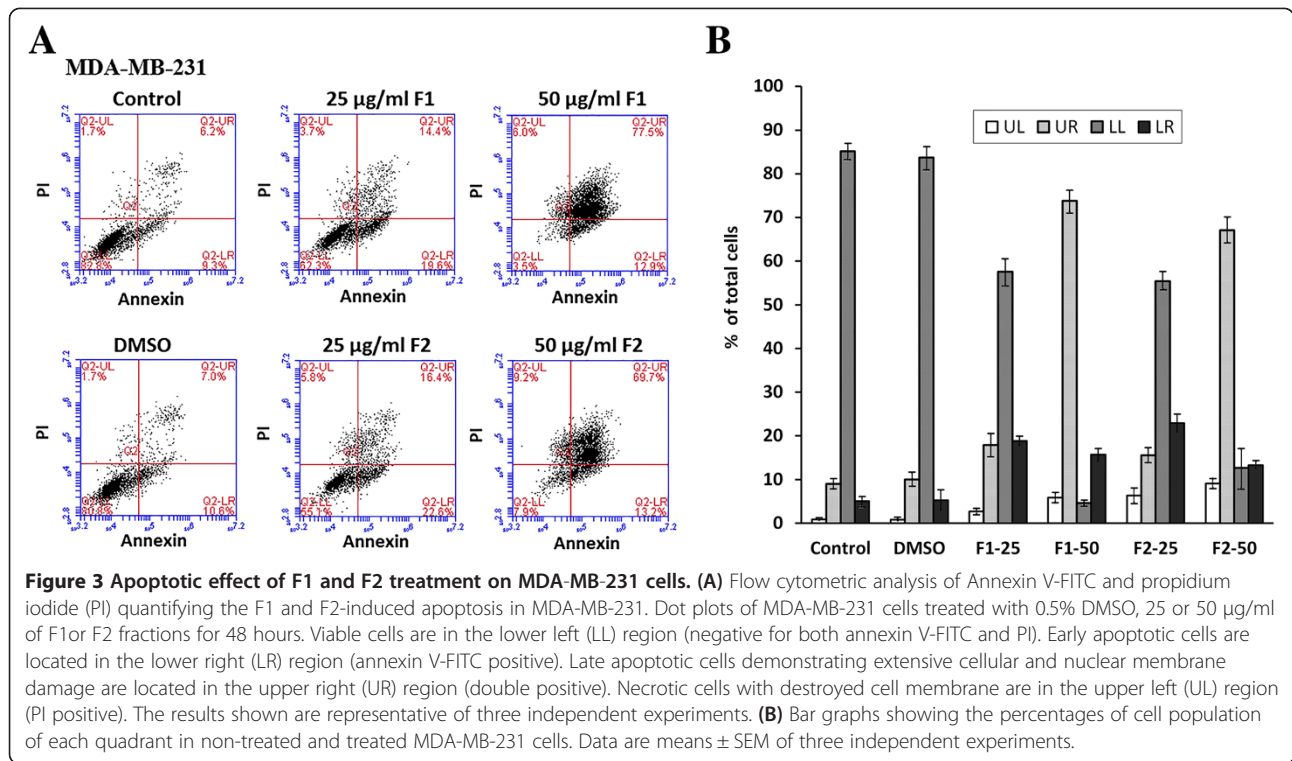
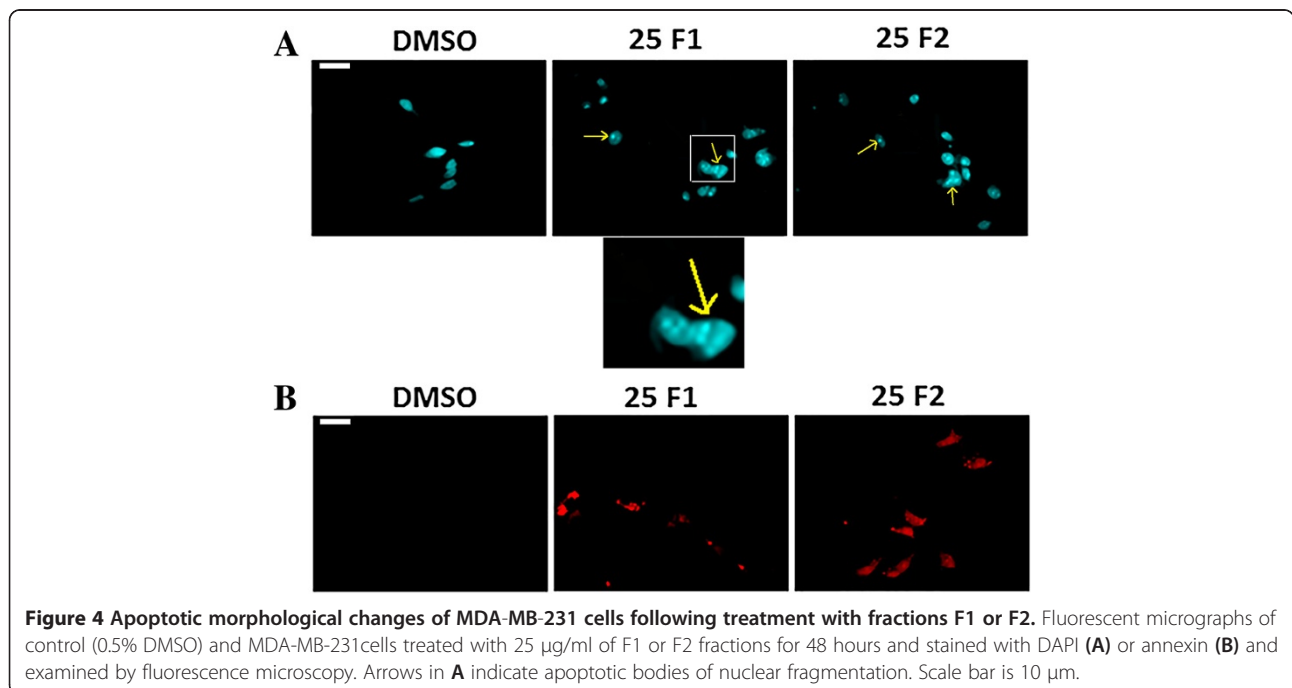


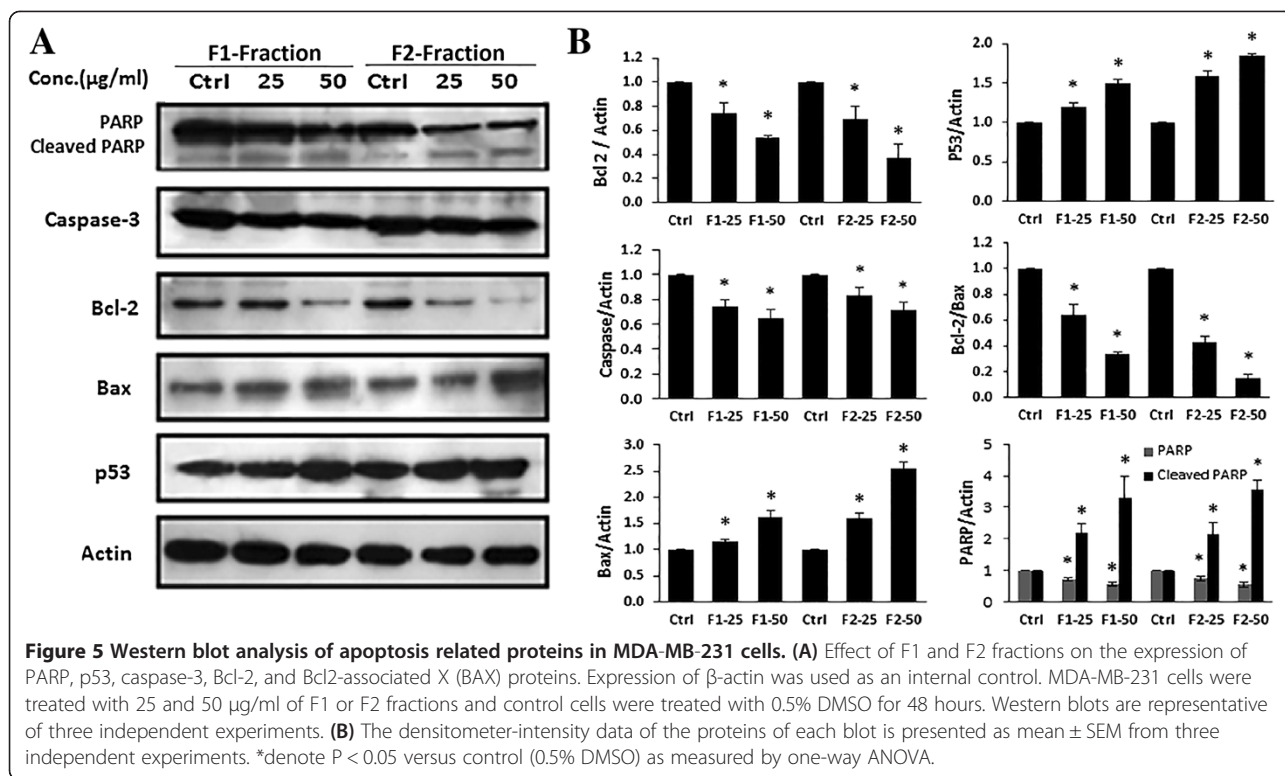
Figure 2 Effect of F1 and F2 fractions on the cell cycle distribution in MDA-MB-231. (A) MDA-MB-231 cells were treated with 25 and 50 µg/ml of F1 or F2 fractions and control cells were treated with 0.5% DMSO for 48 hours, after which cells were stained with PI and analyzed for DNA content by flow cytometry. The sub-G1 peak is considered as the apoptotic portion. The results shown are representative of 3 independent experiments. (B) Bar graph shows the cell distributions of each phase of the cell cycle. Data are means ± SEM of three independent experiments. *denotes $P < 0.05$ versus DMSO group as measured by one-way ANOVA.



apoptotic and anti-apoptotic proteins was evaluated by western blot. Treatment of MDA-MB-231 cells with F1 and F2 induced a decrease in the level of the inactive caspase-3 in a dose dependent manner indicating its cleavage into activated form. In response to treatment, the level of the 116-kDa PARP decreased and the level of the

cleaved 85-kDa fragment increased (Figure 5A). Furthermore, the results of western blot indicated that the level of the anti-apoptotic protein Bcl-2 was decreased, whereas the pro-apoptotic protein BAX was increased. The expression of p53 protein was also assessed by western blot and showed an increased level as shown in Figure 5A.





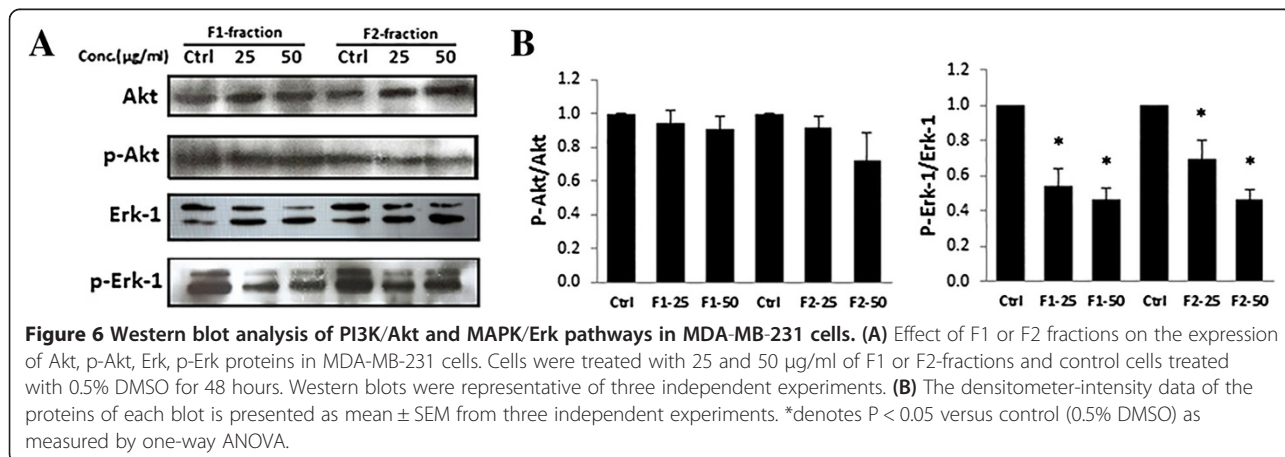
PI3K activation was examined using western blot analysis to look for phosphorylated Akt. Upon treatment of MDA-MB-231 with either fraction, no significant change in phosphorylated Akt was observed as compared with the control (Figure 6). On the other hand, the activity of the MAPK pathway was assessed through examining the level of phosphorylation of Erk. Results in Figure 6 revealed a significant decrease in pErk upon treatment with F1 or F2.

Since neither fraction acted through the PI3K pathway in MDA-MB-231 cells, we investigated whether the combined treatment of each fraction with wortmannin, a

selective PI3K inhibitor, would have a synergistic effect on the inhibition of cell proliferation. WST results showed a substantial decrease in cell survival of MDA-MB-231 cells treated with 25 μ g/ml of F1 or F2 along with wortmannin (1 μ M) compared to fraction alone (Figure 7A and B).

Discussion

DCOE has been shown to have an antioxidant and anti-cancer activities against breast and colon cancer cell lines [24]. Previously, DCOE has been fractionated into four major fractions and various constituents of each



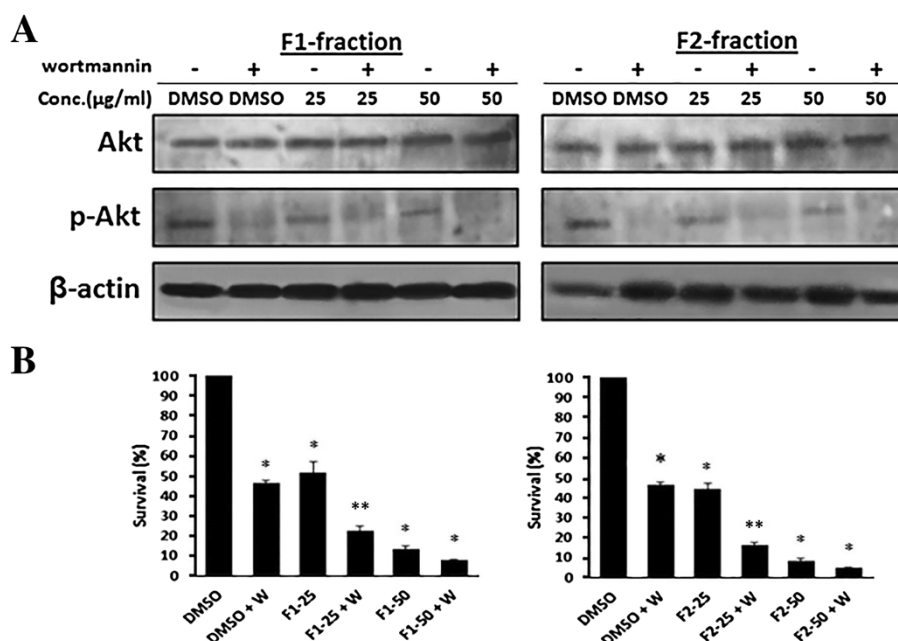


Figure 7 Effect of the combined treatment of F1 or F2 with wortmannin on MDA-MB-231 cells. **(A)** MDA-MB-231 cells were treated with 25 or 50 µg/ml of F1 or F2 or DMSO for 48 h in the presence or absence of 1 µM wortmannin for 24 h. Cells were lysed and blotted for Akt and pAkt. **(B)** Effect of F1 and F2 fractions on MDA-MB-231 cell survival at concentrations of 25 or 50 µg/ml for 48 hours in the presence or absence 1 µM wortmannin. Inhibition of cell survival was assessed using the WST-1 assay. Data are expressed as % survival of cells. Data denote mean ± SEM from three independent experiments. *denotes P < 0.05 versus control (0.5% DMSO) and **denotes P < 0.05 versus F1-25 or to F2-25 groups as measured by one-way ANOVA.

fraction were identified and their *in vitro* and *in vivo* antioxidant activities were evaluated (Shebaby, et al. 2013, submitted). The present data demonstrated that the DCOE fractions had significant anti-proliferative effect against MDA-MB-231 and MCF-7 human breast cancer cell lines. The DCOE fractions exhibited dose dependent cytotoxicity against both cell lines. Moreover, pentane (F1) and pentane/diethyl ether (F2) fractions exhibited higher anticancer activity than the other fractions (F3, F4).

This anticancer activity might be attributed to major components present in the oil fractions. For example, α -humulene and β -caryophyllene which are major components of F1, have been reported to exhibit cytotoxic activity against several human cell lines [27,28]. Similarly, the sesquiterpene β -selinene and the phenylpropanoids, (*E*)-methylisoeugenol and elemicin, identified in F2 fraction are also known to demonstrate anti-proliferative activity and tumoricidal effects against several human cell lines [8]. The anti-proliferative activity of the F2 fraction may be attributed to the presence of the major compound which is tentatively identified *via* GC-MS as 2-himachalene-6-ol. To the best of our knowledge, this compound has not been reported in any of the wild carrot species around the world and there are no previous studies involving its anticancer activity.

However, widdrol, a structural isomer of 2-himachalene-6-ol, extracted from *Juniperus chinensis*, has been shown to exhibit a potent anti-cancer activity against colon adenocarcinoma cells HT29 by inhibiting their proliferation and inducing cell cycle G1 arrest [29]. In another study, widdrol induced G1 arrest through the induction of Chk2, p53 phosphorylation and CDK inhibitor p21 expression as well as inhibition of cyclin E, cyclin-dependent kinase (CDK2) and retinoblastoma protein (pRB) [30].

Targeting the cell cycle and apoptotic pathways in cancer cells is an important approach for cancer treatment and anti-cancer drug development [31]. Therefore, many studies have been conducted to isolate and identify compounds that induce cell cycle arrest and apoptosis [32]. In this study, we found that fractions F1 and F2 induced apoptosis in MDA-MB-231 cells, as verified by the formation of apoptotic nuclei that are characterized by chromatin condensation and DNA fragmentation. These results are consistent with an accumulation of cells in the sub-G1 apoptotic phase. The cell cycle analysis also revealed a decrease in cycling cells, which is indicative of cell cycle arrest. The tumor suppressor p53 plays an important role in response to DNA damage or other genomic instability. Functional p53 protein is crucial in p53-dependent pathway leading to cell cycle arrest or apoptosis [33]. MDA-MB-231 cells are known to harbor

high level of mutant and non-functional form of p53 [34]. The increase in p53 protein following F1 or F2 treatment may not solely explain p53-dependent apoptosis. Therefore, the cell cycle arrest and apoptosis in MDA-MB-231 cells is chiefly mediated through a p53-independent mechanism.

To gain an understanding into the mechanisms controlling apoptosis induced by F1 and F2, we examined several components of the apoptotic pathways. The proteins of the Bcl-2 family play an essential role in apoptosis and are considered as a target for anticancer therapy [35,36]. The Bcl-2 protein exhibits an anti-apoptotic effect while BAX is a pro-apoptotic protein of the Bcl-2 family [37,38]. Several studies indicated that the ratio of Bcl-2 to BAX proteins decreases during apoptosis [39]. In the present study, a decrease in the expression Bcl-2 and an increase in the expression of BAX were observed after treating MDA-MB-231 cell lines with F1 and F2. Additionally, activated caspase 3 plays a crucial role in the final step of apoptosis and it is a key protease for the cleavage of PARP resulting in the loss of its enzymatic activity during apoptosis. This nuclear enzyme is involved in DNA repair and maintenance of genomic integrity and it has been used as an important marker of apoptosis [40]. The present data demonstrate that cleavage of caspase 3 and PARP are evident after treatment of MDA-MB-231 cells with F1 and F2 [41] which is consistent with an increase in apoptosis.

The MAPK/ERK pathway plays an important role in several cellular processes such as cell survival, cell proliferation and apoptosis. It is reported that constitutively activated ERK is responsible for high levels of cell growth in various cancers [42,43]. On the other hand, down-regulation of ERK activity is highly associated with apoptosis [44]. In the present study, treatment of MDA-MB-231 cells with either F1 or F2 significantly decreased the phosphorylated ERK. Therefore, induction of apoptosis in MDA-MB-231 cells after F1 or F2 treatment may be mediated through the inhibition of the MAPK pathway.

The PI3K/AKT is another important intracellular signaling pathway in regulating cell proliferation and apoptosis. The serine/threonine protein kinase Akt is a downstream molecule which is involved in the inactivation of several pro-apoptotic proteins and the activation of anti-apoptotic proteins. The Akt pathway has an essential role in regulating cell proliferation and survival in cancer [45,46]. Our results revealed that apoptotic concentrations of the F1 or F2 did not show any significant effect on phosphorylated Akt compared to the control. However, a combined treatment with a potent PI3K inhibitor (wortmannin) had a synergistic effect on apoptosis potentially through the inhibition of both MAPK and PI3K pathways. This shows that wortmannin and the fractions are acting distinct pathways.

Conclusion

The present study demonstrates that the pentane fraction (F1) and pentane/diethylether fraction (F2) have potent anticancer activity against MDA-MB-231 and MCF-7 human breast cancer cells. Both fractions inhibit cell proliferation by inducing cell cycle arrest and apoptosis in MDA-MB-231 cells. This induction of apoptosis is through the inhibition of the ERK pathway. The results suggest that the wild carrot could be considered a potential source for natural anticancer compounds. Future work will focus on isolation and characterization of the tentatively identified major compound and will explore the prospective *in vitro* and *in vivo* anticancer capabilities.

Additional file

Additional file 1: Table S1. IC₅₀ values of the different fractions.

Competing interests

The authors declare that they have no competing interests.

Authors' contributions

WS performed most of the experimental work in this study. MM designed the extraction procedure. KB-S helped with the cell cycle analysis. AM helped with the experiments. RT performed the fractionation of the crude oil. CD had a lot of intellectual input. MS conceived the study. All authors read and approved the final manuscript.

Acknowledgements

This study has been funded by the Natural Science department at the Lebanese American University.

Author details

¹Department of Microbial and Cellular Sciences, Faculty of Health and Medical Sciences, University of Surrey, Surrey, UK. ²School of Pharmacy, Lebanese American University, P.O. Box 36, Byblos, Lebanon. ³School of Medicine, Lebanese American University, Byblos, Lebanon. ⁴Department of Natural Sciences, School of Arts and Sciences, Lebanese American University, P.O. Box 36, Byblos, Lebanon.

Received: 14 February 2014 Accepted: 1 October 2014

Published: 10 October 2014

References

1. Jemal A, Bray F, Center MM, Ferlay J, Ward E, Forman D: **Global cancer statistics.** *CA Cancer J Clin* 2011, **61**(2):69–90.
2. Luqmani Y: **Mechanisms of drug resistance in cancer chemotherapy.** *Med Princ Pract* 2008, **14**(Suppl. 1):35–48.
3. Ma JK, Chikwamba R, Sparrow P, Fischer R, Mahoney R, Twyman RM: **Plant-derived pharmaceuticals—the road forward.** *Trends Plant Sci* 2005, **10**(12):580–585.
4. Reddy L, Odhav B, Bhoola KD: **Natural products for cancer prevention: a global perspective.** *Pharmacol Ther* 2003, **99**(1):1–13.
5. Mumper RJ: **Plant phenolics.** *Molecules* 2010, **15**:7313–7352.
6. Akahane S, Kamata H, Yagisawa H, Hirata H: **A novel neutral amino acid transporter from the hyperthermophilic archaeon *Thermococcus* sp. KS-1.** *J Biochem* 2003, **133**(2):173–180.
7. Jie Houa TS, Jun H, Shuangyang C, Xiaoqiang C, Guolin Z: **Chemical composition, cytotoxic and antioxidant activity of the leaf essential oil of *Photinia serrulata*.** *Food Chem* 2007, **103**(2):355–358.
8. Andrea L, Medina-Holguin FOH, Sandra M, Sondra G, Simon JA, O'Connell MA: **Chemotypic Variation of Essential Oils in the Medicinal Plant, *Anemopsis californica*.** *Phytochemistry* 2008, **69**(4):919–927.
9. Sibanda S, Chigwada G, Poole M, Gwebu ET, Noletto JA, Schmidt JM, Rea AI, Setzer WN: **Composition and bioactivity of the leaf essential oil of**

- Heteropyxis dehniae** from Zimbabwe. *J Ethnopharmacol* 2004, **92**(1):107–111.
10. Cragg GM, Newman DJ: **Plants as a source of anti-cancer agents.** *J Ethnopharmacol* 2005, **100**(1):72–79.
 11. Vermeulen K, Van Bockstaele DR, Berneman ZN: **The cell cycle: a review of regulation, deregulation and therapeutic targets in cancer.** *Cell Prolif* 2003, **36**(3):131–149.
 12. Kaufmann SH, Gores GJ: **Apoptosis in cancer: cause and cure.** *Bioessays* 2000, **22**(11):1007–1017.
 13. Sharma Y, Agarwal C, Singh AK, Agarwal R: **Inhibitory effect of silibinin on ligand binding to erbB1 and associated mitogenic signaling, growth, and DNA synthesis in advanced human prostate carcinoma cells.** *Mol Carcinog* 2001, **30**(4):224–236.
 14. Mujoo K, Haridas V, Hoffmann JJ, Wächter GA, Hutter LK, Lu Y, Blake ME, Jayatilake GS, Bailey D, Mills GB: **Triterpenoid saponins from *Acacia victoriae* (Benth) decrease tumor cell proliferation and induce apoptosis.** *Cancer Res* 2001, **61**(14):5486–5490.
 15. Singh S, Aggarwal BB: **Activation of transcription factor NF- κ B is suppressed by curcumin (diferuloylmethane).** *J Biol Chem* 1995, **270**(42):24995–25000.
 16. Mo H, Elson CE: **Apoptosis and cell-cycle arrest in human and murine tumor cells are initiated by isoprenoids.** *J Nut* 1999, **129**(4):804–813.
 17. Gonny M, Bradesi P, Casanova J: **Identification of the components of the essential oil from wild Corsican *Daucus carota* L. using ¹³C-NMR spectroscopy.** *Flavour Frag J* 2004, **19**(5):424–433.
 18. Staniszevska M, Kula J, Wieczorkiewicz M, Kusewicz D: **Essential oils of wild and cultivated carrots—the chemical composition and antimicrobial activity.** *J Essent Oil Res* 2005, **17**(5):579–583.
 19. Hoffman D: *The New Holistic Herbal 3rd Ed edn.* Great Britain: Element Shaftesbury Dorset; 1990.
 20. Thomas KJ, Nicholl JP, Coleman P: **Use and expenditure on complementary medicine in England: a population based survey.** *Complement Ther Med* 2001, **9**(1):2–11.
 21. Wyk B-EV, Wink M: *Medicinal plants of the world: an illustrated scientific guide to important medicinal plants and their uses.* Portland, Ore, USA: Timber Press; 2004.
 22. Maxia A, Marongiu B, Piras A, Porcedda S, Tuveri E, Goncalves MJ, Cavaleiro C, Salgueiro L: **Chemical characterization and biological activity of essential oils from *Daucus carota* L. subsp. *carota* growing wild on the Mediterranean coast and on the Atlantic coast.** *Fitoterapia* 2009, **80**(1):57–61.
 23. Rossi PG, Bao L, Luciani A, Panighi J, Desjobert JM, Costa J, Casanova J, Bolla JM, Berti L: **(E)-Methylisoeugenol and elemicin: antibacterial components of *Daucus carota* L. essential oil against *Campylobacter jejuni*.** *J Agric Food Chem* 2007, **55**(18):7332–7336.
 24. Shebaby WN, El-Sibai M, Smith KB, Karam MC, Mroueh M, Daher CF: **The antioxidant and anticancer effects of wild carrot oil extract.** *Phytother Res* 2013, **27**(5):737–744.
 25. Zeinab RA, Mroueh M, Diab-Assaf M, Jurjus A, Wex B, Sakr A, Daher CF: **Chemopreventive effects of wild carrot oil against 7, 12-dimethyl benz (a) anthracene-induced squamous cell carcinoma in mice.** *Pharm Biol* 2011, **49**(9):955–961.
 26. Wehbe K, Mroueh M, Daher CF: **The potential role of *Daucus carota* aqueous and methanolic extracts on inflammation and gastric ulcers in rats.** *J Complement Integr Med* 2009, **6**(1):1553–3840.
 27. Cole RA, Haber WA, Setzer WN: **Chemical composition of essential oils of seven species of *Eugenia* from Monteverde.** *Costa Rica Biochem Syst Ecol* 2007, **35**(12):877–886.
 28. Silva SL, Chaar JS, Figueiredo PMS, Yano T: **Cytotoxic evaluation of essential oil from *Casearia sylvestris* Sw on human cancer cells and erythrocytes.** *Acta Amazon* 2008, **38**(1):107–112.
 29. Kwon H-J, Lee E-W, Hong Y-K, Yun H-J, Kim B-W: **Widdrol from *Juniperus chinensis* induces apoptosis in human colon adenocarcinoma HT29 cells.** *Biotechnol Bioprocess Eng* 2010, **15**(1):167–172.
 30. Kwon HJ, Hong YK, Park C, Choi YH, Yun HJ, Lee EW, Kim BW: **Widdrol induces cell cycle arrest, associated with MCM down-regulation, in human colon adenocarcinoma cells.** *Cancer Lett* 2010, **290**(1):96–103.
 31. Hu W, Kavanagh JJ: **Anticancer therapy targeting the apoptotic pathway.** *Lancet Oncol* 2003, **4**(12):721–729.
 32. Kim R: **Recent advances in understanding the cell death pathways activated by anticancer therapy.** *Cancer* 2005, **103**(8):1551–1560.
 33. Zhang N, Kong X, Yan S, Yuan C, Yang Q: **Huaier aqueous extract inhibits proliferation of breast cancer cells by inducing apoptosis.** *Cancer Sci* 2010, **101**(11):2375–2383.
 34. Toillon R-A, Chopin V, Jouy N, Fauquette W, Boilly B, Le Bourhis X: **Normal breast epithelial cells induce p53-dependent apoptosis and p53-independent cell cycle arrest of breast cancer cells.** *Breast Cancer Res Treat* 2002, **71**(3):269–280.
 35. Baell JB, Huang D: **Prospects for targeting the Bcl-2 family of proteins to develop novel cytotoxic drugs.** *Biochem Pharmacol* 2002, **64**(5):851–863.
 36. Goodsell DS: **The molecular perspective: Bcl-2 and apoptosis.** *Oncologist* 2002, **7**(3):259–260.
 37. Kluck RM, Bossy-Wetzell E, Green DR, Newmeyer DD: **The release of cytochrome c from mitochondria: a primary site for Bcl-2 regulation of apoptosis.** *Science* 1997, **275**(5303):1132–1136.
 38. Sedlak TW, Oltvai ZN, Yang E, Wang K, Boise LH, Thompson CB, Korsmeyer SJ: **Multiple Bcl-2 family members demonstrate selective dimerizations with Bax.** *Proc Natl Acad Sci* 1995, **92**(17):7834–7838.
 39. Elmore S: **Apoptosis: a review of programmed cell death.** *Toxicol Pathol* 2007, **35**(4):495–516.
 40. Herceg Z, Wang Z-Q: **Functions of poly (ADP-ribose) polymerase (PARP) in DNA repair, genomic integrity and cell death.** *Mutat Res-Fund Mol M* 2001, **477**(1):97–110.
 41. Mantena SK, Baliga MS, Katiyar SK: **Grape seed proanthocyanidins induce apoptosis and inhibit metastasis of highly metastatic breast carcinoma cells.** *Carcinogenesis* 2006, **27**(8):1682–1691.
 42. Dhillon A, Hagan S, Rath O, Kolch W: **MAP kinase signalling pathways in cancer.** *Oncogene* 2007, **26**(22):3279–3290.
 43. Yang S-H, Sharrocks AD, Whitmarsh A: **MAP kinase signalling cascades and transcriptional regulation.** *Gene* 2013, **513**(1):1–13.
 44. Salminen A, Lehtonen M, Paimela T, Kaarniranta K: **Celastrol: molecular targets of thunder god vine.** *Biochem Biophys Res Commun* 2010, **394**(3):439–442.
 45. Gupta AK, Cerniglia GJ, Mick R, McKenna WG, Muschel RJ: **HIV protease inhibitors block Akt signaling and radiosensitize tumor cells both in vitro and in vivo.** *Cancer Res* 2005, **65**(18):8256–8265.
 46. Gupta AK, Li B, Cerniglia GJ, Ahmed MS, Hahn SM, Maity A: **The HIV protease inhibitor nelfinavir downregulates Akt phosphorylation by inhibiting proteasomal activity and inducing the unfolded protein response.** *Neoplasia (New York, NY)* 2007, **9**(4):271.

doi:10.1186/1472-6882-14-387

Cite this article as: Shebaby et al.: *Daucus carota* pentane-based fractions arrest the cell cycle and increase apoptosis in MDA-MB-231 breast cancer cells. *BMC Complementary and Alternative Medicine* 2014 **14**:387.

Submit your next manuscript to BioMed Central and take full advantage of:

- **Convenient online submission**
- **Thorough peer review**
- **No space constraints or color figure charges**
- **Immediate publication on acceptance**
- **Inclusion in PubMed, CAS, Scopus and Google Scholar**
- **Research which is freely available for redistribution**

Submit your manuscript at
www.biomedcentral.com/submit

