

RESEARCH ARTICLE

Open Access

# Effects of stemmed and nonstemmed hip replacement on stress distribution of proximal femur and implant

Chun-Ming Chen<sup>1</sup>, Wen-Chi Tsai<sup>2,3</sup>, Shang-Chih Lin<sup>4\*</sup> and Ching-Shiow Tseng<sup>1</sup>

## Abstract

**Background:** Despite improvements in shape, material, and coating for hip stem, both stress shielding and aseptic loosening have been the major drawbacks of stemmed hip arthroplasty. Some nonstemmed systems were developed to avoid rasping off the intramedullary canal and evacuating the bone marrow due to stem insertion.

**Methods:** In this study, the finite-element models of one intact, one stemmed, and two nonstemmed femora with minimal removal of the healthy neck were investigated to evaluate their biomechanical effects. The resurfacing (ball-shaped) and fitting (neck-shaped) systems were respectively selected as the representative of the ready- and custom-made nonstemmed implants. The stress distribution and interface micromotion were selected as the comparison indices.

**Results:** The results showed that stress distributions of the two nonstemmed femora are consistently more similar to the intact femur than the stemmed one. Around the proximal femur, the stem definitely induces the stress-shielding phenomenon of its counterparts. The fitting system with the anatomy-shaped cup can make intimate contact with the neck cortex and reduce the bone-cup micromotion and the implant stress. Comparatively, the reamed femoral head provides weaker support to the resurfacing cup causing higher interfacial micromotion.

**Conclusions:** The reserved femoral neck could act as the load-transferring medium from the acetabular cup, femoral neck, to the diaphysal bone, thus depressing the stress-shielding effect below the neck region. If the hip-cup construct can be definitely stabilized, the nonstemmed design could be an alternative of hip arthroplasty for the younger or the specific patients with the disease limited only to the femoral head.

**Keywords:** Hip, Stemmed, Nonstemmed, Stress-shielding, Finite-element

## Background

Total hip replacement (THR) with the intramedullary stem has been successfully employed to treat various hip diseases of the patients over the age of forty [1-3]. The surgical method of the stemmed THR is to amputate the intact femoral neck entirely, rasp off the intramedullary canal, and evacuate the bone marrow for the stem insertion. However, stem insertion into the intramedullary canal necessitates both blood transfusion and bone reaming; and thus might lead to infection [1-5]. If the hip defects are limited to the superficial regions of the

femoral head, some studies suggested preserving the bridging bone stock (femoral neck) between the femoral head and the diaphysal shaft [6-9].

There are two types of stem-induced complication that affect the long-term results of THR. One is bone resorption (osteolysis) with the wear debris inducing chemical reaction of the immune system [10]. The other is bone loss (osteoporosis) in response with the stress of the proximal femur shielded by the inserted stem [11-14]. A great many of the clinical results have demonstrated that the stress-shielding effect leads to bone remodeling of the stemmed femur and the implant failure (loosening and cracking) [15-17]. For the diaphysal cortex, the impingement of the stem end has been reported as the stress raiser that induces bone hypertrophy and even fractures [5].

\* Correspondence: orthodont.cax@gmail.com

<sup>4</sup>Graduate Institute of Biomedical Engineering, National Taiwan University of Science and Technology, No. 43, Sec. 4, Keelung Rd, Taipei 106, Taiwan  
Full list of author information is available at the end of the article

For younger or more active patients, the removal of the more proximal bone stock makes the revision surgery unreliable and even leads to subsequent surgery with increasingly difficult problems and poorer results [1,5,15,17]. In the literatures, some nonstemmed systems have been designed and evaluated by numerical or experimental methods [11,12,18-20]. These studies consistently revealed that the proximal region of the nonstemmed femur shows more physiological stress distribution patterns than the stemmed one [11,12,18]. The reported biomechanical advantages of the nonstemmed systems over their counterparts were attributed to the preservation of both the femoral neck and the intramedullary canal.

The reported nonstemmed systems can be divided into two types: femoral ball- and neck-shaped cups [18,21]. Both types preserve the femoral neck and cover the head and neck with the ready- or custom-made cups. The resurfacing system (Durom™, Zimmer, Inc., Indiana, USA) is the typical representative of the ball-shaped cup. Prior to use, the femoral head is reamed as a cylinder to fit the ready-made resurfacing cup. The cancellous cylinder of the reamed ball serves as the load bearer of the superimposed cup. From the biomechanical viewpoint, the femoral neck is subjected to the combined loads, potentially leading to sliding, bending, and twisting of the superimposed cup. Without stem support, hence, the mechanical failure (e.g. loosening and breaking) and the construct instability at the bone-implant interfaces have been reported as the major concerns of hip resurfacing system [22,23].

For the neck-shaped cup, the CT images can be used as the shape reference for designing the custom-made cup that can intimately fit the peripheral cortex of the preserved neck. Without stem insertion, the bone-implant constructs of the two cup systems are stabilized by screws. From the biomechanical viewpoint, the performance of the nonstemmed system is closely related to the load-transferring mechanism of the hip cup, interfacial fitness of the bone-cup construct, and mechanical strength of the underlaid bone (cancellous or cortical). According to the authors' knowledge, however, there is still no study investigating extensively the biomechanical differences between the ready-made ball- and the custom-made neck-shaped cups.

This study aimed to investigate three subjects of hip arthroplasty: 1) the stem-induced stress-shielding effect on the proximal femur, 2) the biomechanical influence of preserving the femoral neck on the proximal femur, and 3) the micromotion difference between the ball- and neck-shaped cups at the bone-implant interfaces. Based on the CT images, the finite-element model of the intact femur was three-dimensionally reconstructed and the stemmed and nonstemmed hip implants were

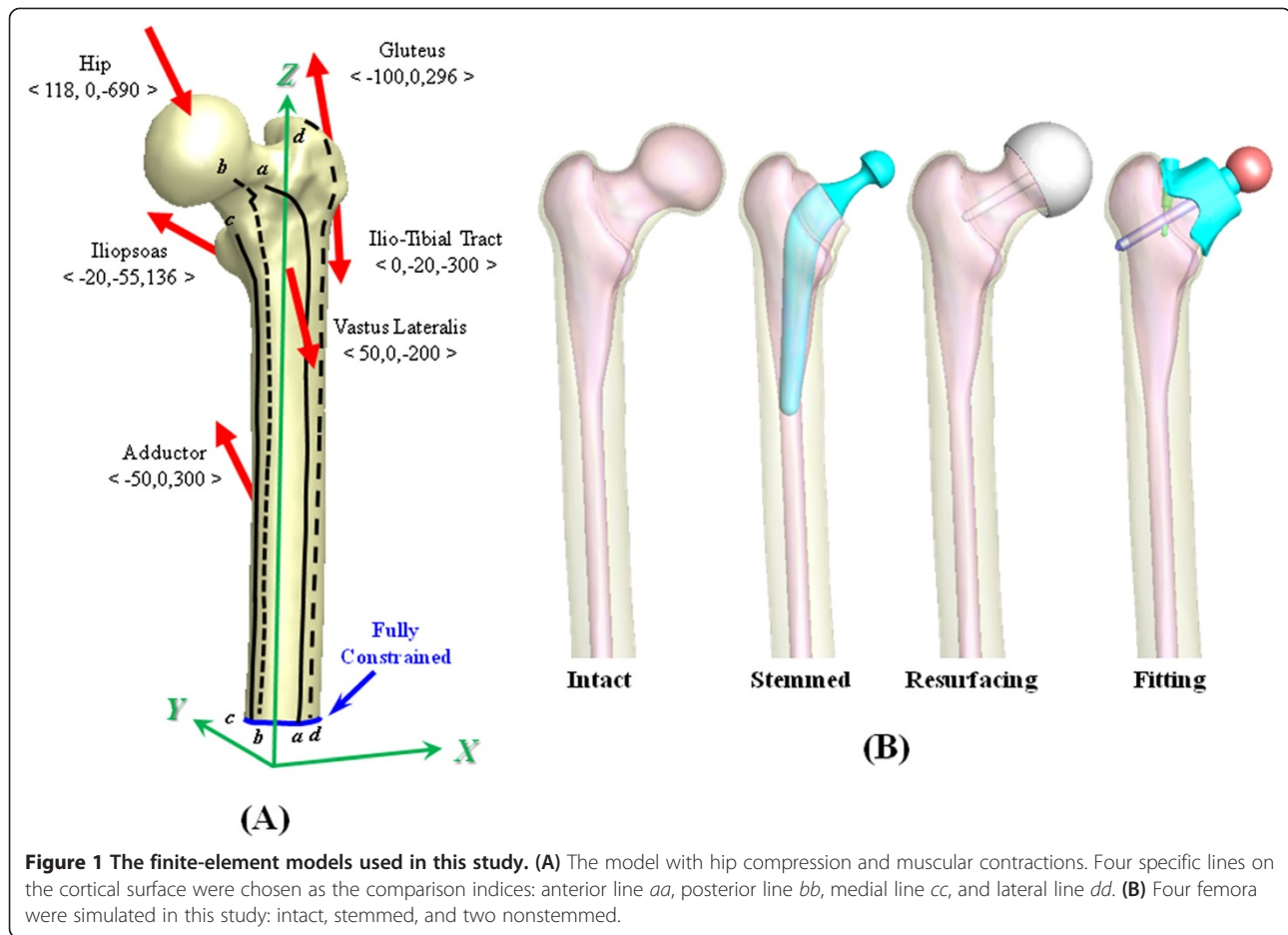
instrumented. The results of this study would provide insight into the load-transferring and interface-slipping mechanisms of both stemmed and nonstemmed systems.

## Methods

### Femoral model and hip prostheses

The pelvis and femur of a 24-year-old male participant without any hip disease were scanned *in vivo* using computed tomography (CT). The participant gave his consent to the collection and utilization of CT-scanning images used in the study. The CT-scanning images with 1-mm slice separation were three-dimensionally reconstructed as a proximal femur with triangular surface meshes using the software PhysiGuide, version 2.3.1 (Pou Yuen Technology Co., Ltd, Changhua, Taiwan) [24]. In this study, the pelvis was excluded and only the femur was used (Figure 1A). The femur consists of the cortical shell and cancellous core whose boundaries were defined from the grayscale difference of the CT image outlines (Figure 1B). The femoral model was further transformed into a solid model with smooth and seamless surfaces using the software SolidWorks, version 2011 (SolidWorks Corporation, Concord, MA, USA). The numerical modeling using CT-scanning images is conformed to the article of "free from ethical approval for scientific research" in the fifth term of the article 5 on Research Involving Human Subjects Law by Ministry of Health and Welfare in Taiwan. Therefore, this study is exempt from ethical approval.

The intact femur was used as the comparison baseline of the stemmed and nonstemmed systems. The stemmed system was the representative of the conventional hip system (Capital™, 3 M Health Care Ltd., Leicestershire, UK) (Figure 1B). The Durom™ resurfacing cup was the first nonstemmed system comprising a ball head and a central bar (Figures 1B and 2A). For the second nonstemmed system, the current author used the participant's CT images to design the fitting cup having highly intimate contact with the participant's neck (Figures 1B and 2B). For such a custom-made cup, a central screw was inserted through the anatomical axis of the femoral neck to further stabilize the fitting cup. If necessary, the use of a locking screw can turn the linkage of two screws into a stability-enhancing mechanism for the bone-cup construct. The cup slot was designed to avoid direct compression on the periarticular blood vessels and nerve roots. For the stemmed model, the bone stock above the neck was obliquely removed and the stem was instrumented into the intramedullary canal, same as in traditional stemmed THR. For the resurfacing and fitting systems, the inner cup makes intimate contact with the underlaid bones. For the fitting system, the threads of the central and locking screws were neglected to simplify the numerical analysis.



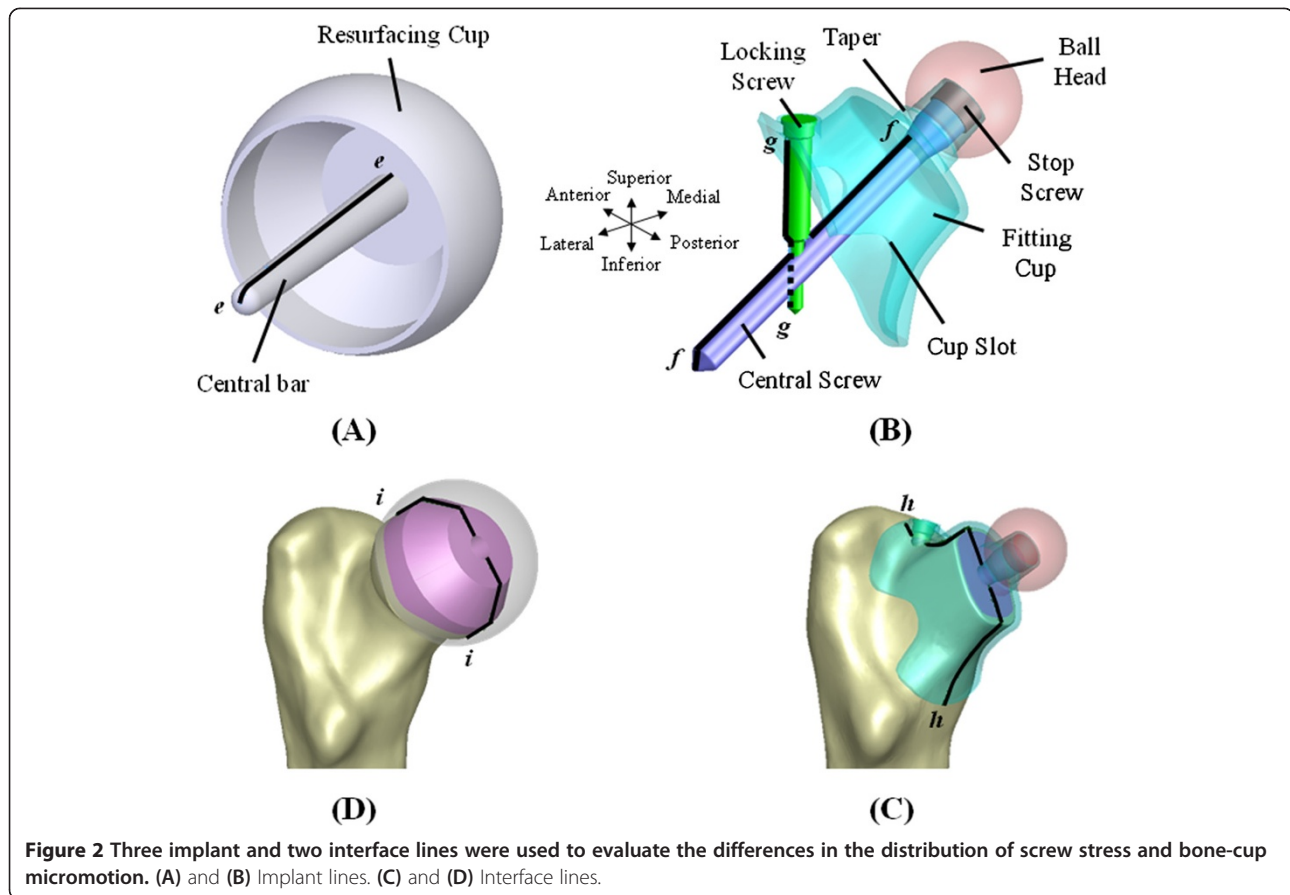
### Finite-element analysis

Only the proximal femur was analyzed and the distal end was rigidly fixed (Figure 1A). Both hip compression and muscular contractions were simulated as the physiological loads onto the proximal femur. The X-Y-Z coordinate system with the origin at the knee intercondyle was set to define the muscular contractions. The X, Y, and Z axis were mediolaterally, anteroposteriorly, and superoinferiorly directed, respectively (Figure 1A). The insertion points and force directions of the gluteus, piriformis, iliopsoas, ilio-tibial tract, vastus lateralis, and adductor were cited from the literature [25-27]. The vectorial components of the hip and muscle forces on the femur were selected at the static position of one leg stance [18,28-30]. The geometric models of one stemmed and two nonstemmed systems were developed in the SolidWorks environment (Figure 1).

The stress distribution, interfacial micromotion, and implant failure were the main concerns of this study (Figures 1A and 2). Four lines from *aa* to *dd* were drawn and projected onto the femoral surfaces to evaluate the implant-related effect on the cortical stress (Figure 1A).

For the nonstemmed systems, the highly stressed bar and screws make them the potentials for mechanical failure that were evaluated by the stress distribution along the three lines from *ee* to *gg* (Figure 2A and B). The interfacial micromotion was employed to indicate the instability of the bone-cup construct and was determined along lines *hh* and *ii* (Figure 2C and D). The von Mises and maximum principle stresses were respectively used as the comparison indices of the bone and implant stresses.

The Young's modulus, Poisson's ratio and bone density were respectively assigned the values of 17.5 GPa, 0.3 and 1.9 gcm<sup>-3</sup> for the cortical bone and 1.5 GPa, 0.12 and 0.8 gcm<sup>-3</sup> for the cancellous bone [30-33]. The Co-Cr-Mo alloy with Young's modulus (=234 GPa) and Poisson's ratio (=0.3) was used as the material of the stemmed and nonstemmed implants. The friction coefficients were assigned as 0.2 between cup and bone and 0.32 between metallic prostheses, respectively [34,35]. All materials were assumed to have linearly elastic, homogeneous, and isotropic material properties throughout. The calculated stresses of all implants were compared



**Figure 2** Three implant and two interface lines were used to evaluate the differences in the distribution of screw stress and bone-cup micromotion. (A) and (B) Implant lines. (C) and (D) Interface lines.

with the yielding strength (=450 MPa) of the Co-Cr-Mo alloy to validate the assumption of linear elasticity. The interaction of touching surfaces between the bone-implant interfaces were simulated with the surface-to-surface contact elements to allow interfacial slippage.

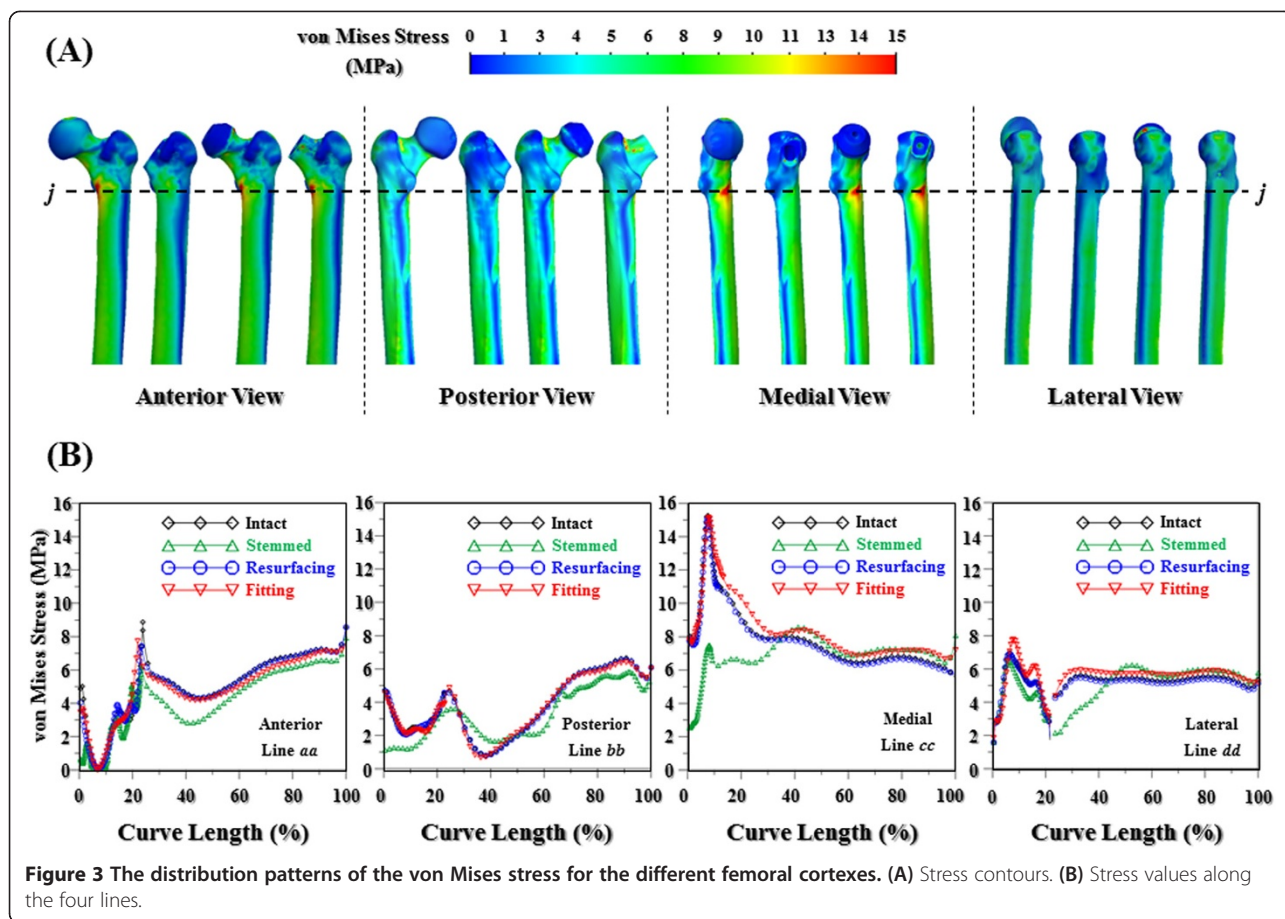
By using the automatic mesh algorithm, the bone-implant constructs were meshed by the software Simulation, version 2011 (SolidWorks Corporation, Concord, MA, USA). Four models were meshed by the 10-node tetrahedral solid elements with the curved element boundary, thus eliminating the sharp discontinuities to induce unrealistically high stress concentration. According to aspect ratio and Jacobian checks, all elements were within acceptable distortion limits to maximize the accuracy of the results. There was a refinement of the mesh in the vicinity of the aforementioned lines, cups and screws, to improve the modeling accuracy until excellent monotonic convergence behavior (h-adaptive method) with <1% difference in the total strain energy was achieved. A special element density, which is twice averagely that for the rest of the model, was used for the cups and screws. The overall average element size was 3.5 mm. The numbers of elements of the four models

were 92,911 (intact), 74,552 (stemmed), 89,703 (resurfacing), and 100,683 (fitting), respectively.

## Results

### Stress distribution of surrounding bones

The validation steps of this finite-element model had been described in the previous study of the current authors [36]. The von Mises stress distributions of the four femoral cortices were shown in Figure 3. The stress distribution patterns of the two nonstemmed femora were similar to those of the intact femur at the proximal cortex. For all views, however, the stress values of the stemmed femur were significantly smaller than those of its counterparts. The biomechanical differences between the intact and instrumented femora were quantitatively compared at the line *jj* (Figure 3A). Compared with the intact femur; the stress values of the stemmed femur were averagely decreased about 16.3% (anterior), 16.8% (posterior), 60.6% (medial), and 46.8% (lateral) at the greater trochanter. The aforementioned differences were increased about 5.1% (anterior) and decreased about 2.3% (posterior), 5.5% (medial), and 2.4% (lateral) for the resurfacing system. The differences were increased about



8.0% (anterior), decreased 6.4% (posterior), and increased 8.4% (medial) and 9.5% (lateral) for the fitting system. Among the four femora, the stress difference in the diaphyseal cortex was decreased for all sides.

#### Micromotion at bone-cup interface

Upon loading, the interfacial micromotion results in the gap between the resurfacing cup and reamed femur, except for the plateau (Figure 4A). Above the central bar, the micromotion along line *ii* was on average 0.06 mm. Comparatively, the fitting system seems to be more stable in response to the result that the interfacial micromotion is mostly exhibited along the upper line *hh* (Figure 4B). For the two nonstemmed systems, the interfacial micromotion always occurs along the inferior portion of the two interface lines. Below the plateau, the micromotion value of the fitting system was somewhat smaller than that of the resurfacing system.

#### Stress distribution of nonstemmed implants

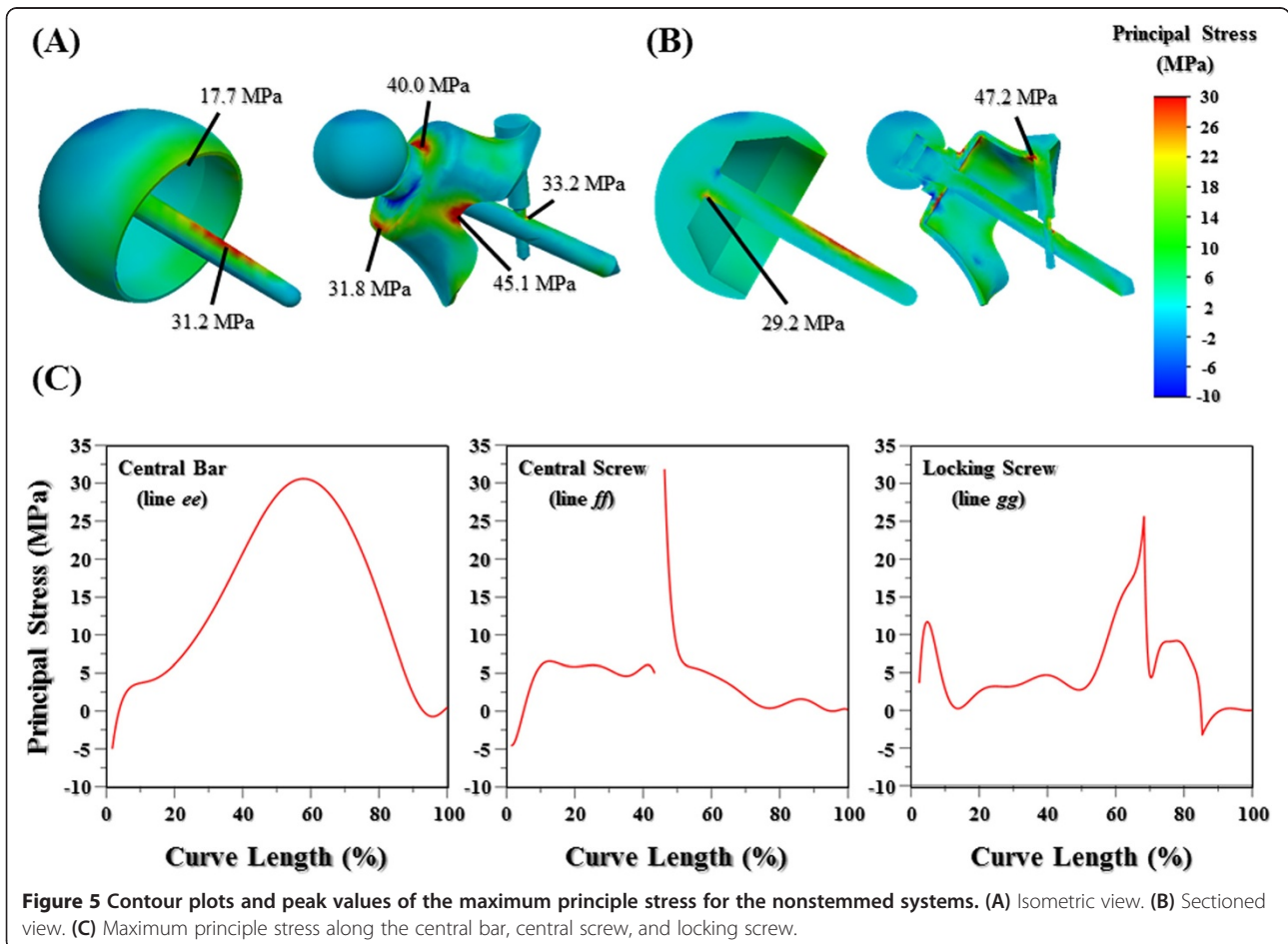
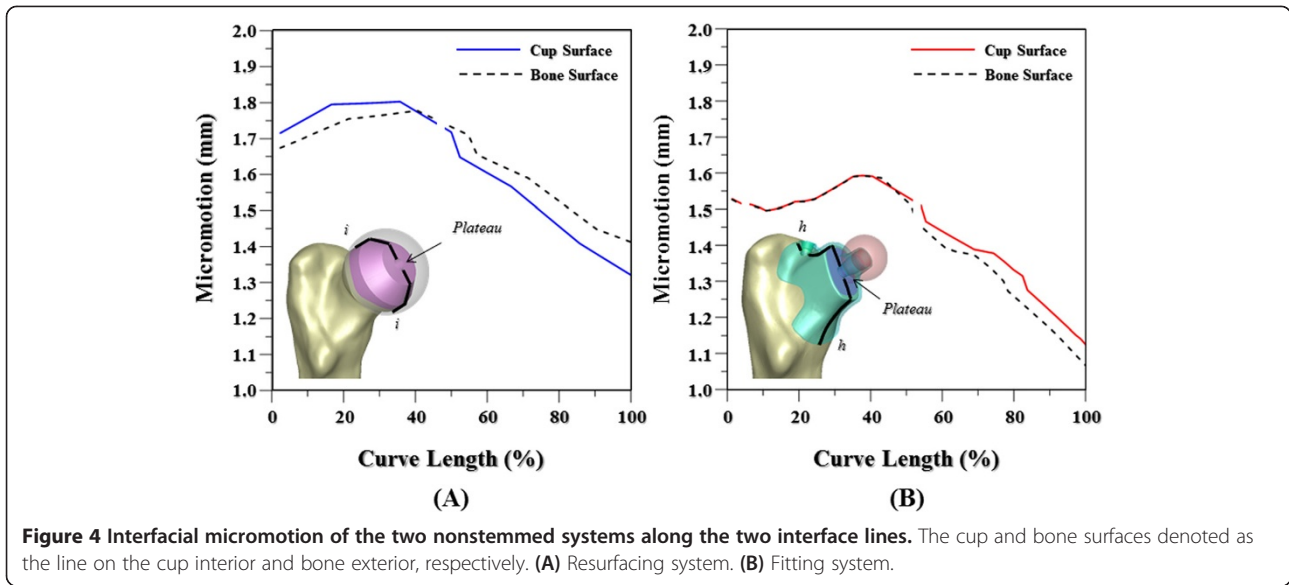
The maximum principle stress distribution patterns of the nonstemmed systems are shown in Figure 5. For the fitting system, the concave design of the cup slot makes

it the stress raiser (45.1 MPa) compared with the other region (Figure 5A). For the resurfacing system, the central bar serves as the stabilizer for the superimposed cup and bears most of the physiological loads, resulting in high stress concentration at the cup-bar junction (29.2 MPa) (Figure 5B). Both hip compression and muscular contraction were transferred to the fitting cup through the central screw and taper, thus leading to stress concentration at the cup-taper junction (40.0 MPa). For the fitting cup, one of the stabilizing mechanisms is the locking screw. Consequently, stress is mostly concentrated at the cup/locking screw junctions (47.2 MPa). The intersecting hole of the central screw also makes it the stress-concentrated site (33.2 MPa). The stress distribution along the central bar was the bell-shaped pattern with the peak value at the middle region (Figure 5C).

#### Discussion

##### Stress distribution of surrounding bones

From the biomechanical viewpoint, the inserted stem inevitably redistributes the stress values of the proximal femur [11,13,14]. Subsequently, the reduced stress and induced debris around the stem make the surrounding bones

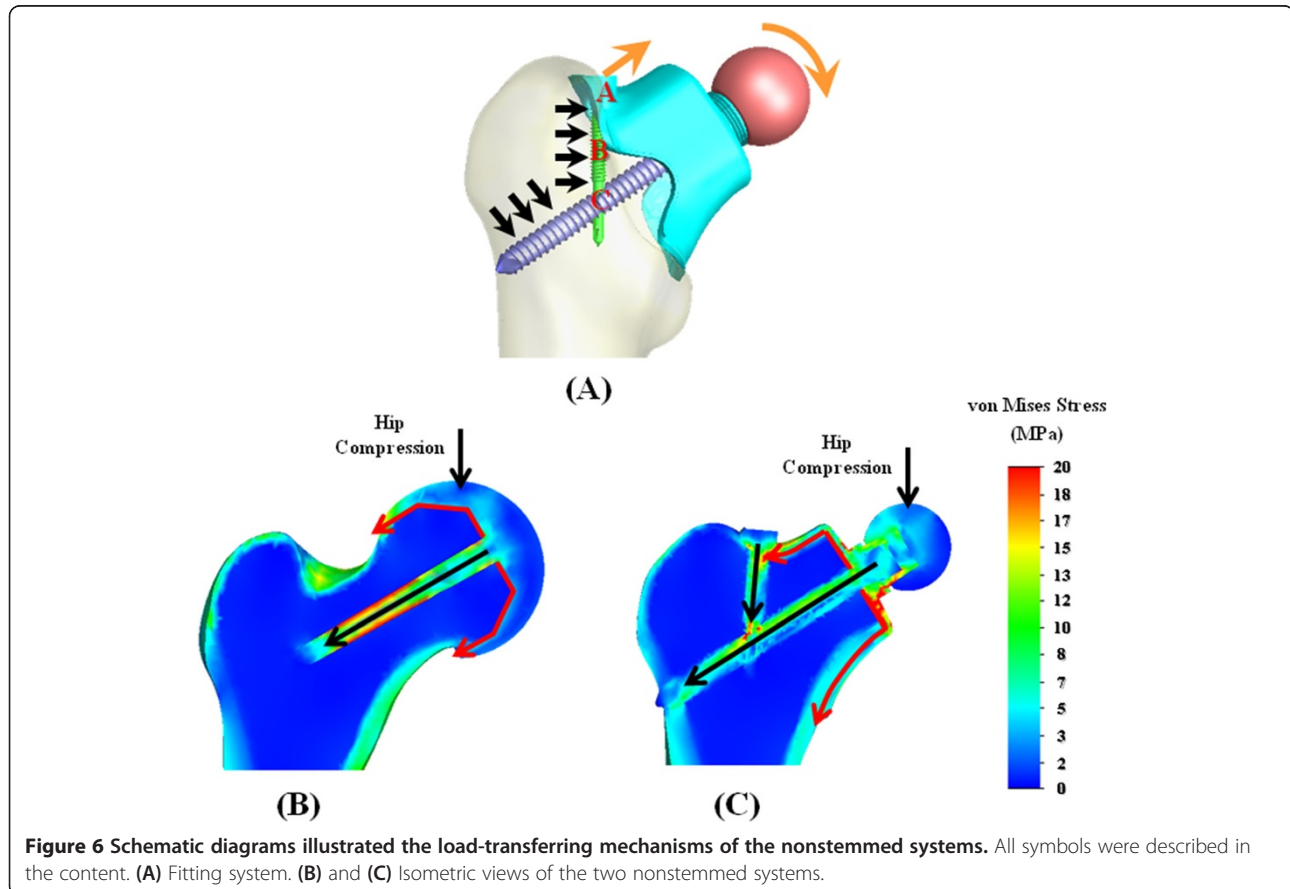


prone to bone osteoporosis (stress shield) and resorption (immune reaction). These two bone reactions often deteriorate the stem-stabilizing environment. Hence, the weakened bone strength and increased interface micromotion cannot support the external loads through the inserted stem [1,11-13]. Figure 3 show significant differences in cortical stresses on the medial side between the intact and the stemmed femora. For the nonstemmed femora, however, the cortical stresses within the proximal and diaphysial regions were similar to those of the intact femur.

For the medial cortex below the line *jj* (Figure 3A), the decrease in cortical stress showed that most of the proximal loads were transferred from the stem to the diaphysial cortex [14]. According to Wolff's law, the reduction in bone loads causes the bone to adapt itself by reducing the mechanical strength (material remodeling) or thinning the trabecular size (structural remodeling). The results of the current study were consistent with the reported stem-induced effect on bone stress [11,13,14]. This indicates potentially higher aseptic loosening between the intramedullary stem and cancellous bone compared with that of the nonstemmed implant [11,12,37], which is consistent with the phenomenon observed for cortical stress. The results of this study demonstrated the stem-induced stress problem on the proximal femur.

### Micromotion at bone-cup interfaces

Detailed results of the interfacial micromotion for the two nonstemmed systems are shown in Figure 4. For the resurfacing system, significant micromotion along line *ii* exists except for the plateau. The bone-cup micromotion of the resurfacing system is greater than that of the fitting system, especially at the superior region of the interface lines (Figure 4). This can be explained by three structural factors of cup design and bone strength. The first is that the fitting system provides more intimate contact area between the cup interior and the underlaid bone than the resurfacing system (Figure 1B). The second is that the bone-screw interfaces are more stable for the fitting system than for the resurfacing system (Figure 2A and B). The resurfacing cup is stabilized only by the central bar but two intersecting screws are employed to form the interlocking mechanism of the fitting cup. For the fitting system, the loads onto the ball head will medially bend the portion A of the cup, which is immobilized by the locking screw (Figure 6A). However, the pullout of the locking screw will induce clockwise rotation of the screw shaft at portion B and can be reasonably assumed to be constrained by the intersecting mechanism at portion C. The third is that the custom-made cup of the fitting system covers directly the stronger cortex and the resurfacing



cup is superimposed over the reamed cancellous bone (Figure 2C and D). Consequently, the differences in contact situation, locking mechanism, and bone strength contribute to greater stability of the fitting than the resurfacing system. As in the resurfacing system, however, the downward movement of the fitting cup inevitably leads to interfacial micromotion at the distal portion of line *hh* (Figure 4B).

#### Stress distribution of nonstemmed implants

Contrary to the stemmed system, the ball-shaped cup is supported by the underlaid bone and further stabilized by the central bar. However, this makes the central bar as the heavily stressed component (Figure 5). Except for the cup-bar junction, stress concentration also occurs at approximately the middle region of the central bar where is about projective site of cup rim onto the bar (Figure 5A and B). It can be explained by the fact that, outside the cup, the bar begins to bear the loads. For the fitting system, the intercomponent junctions and cup slots were the stress-concentrated sites. Owing to shape discontinuity, the highly stressed sites of the central and locking screws are the interlocking hole and the diameter-reduced corner (Figure 5C). The designs should be modified to avoid plastic yielding or fatigue cracking at these sites. Results of this study showed that the long-term stabilization of the bone-cup construct is the major concern of the nonstemmed system without stem insertion.

The load-transferring mechanisms of the two nonstemmed systems are compared in Figure 6B and C. Hip compression is the dominant load at the femoral head while anteroposterior loads are comparatively minor, resulting in comparable values of cortical stress between the resurfacing and fitting systems (Figure 3B). For the resurfacing system, hip compression was transferred into the proximal femur through the cup interior (red arrows) and central bar (black arrow) (Figure 6B). For the fitting system, the load-transferring paths are the cup interior (red arrows) and the central screw (black arrow) (Figure 6C). The load through the upper contact surface of the fitting cup is further transferred through the locking screw. The load through the central screw is concentrated at the intersecting site and transferred into the lateral cortex. Due to support of lateral cortex and longer bone-screw contact, the peak stress at the intersecting site of the central screw was somewhat higher than that of the central bar (Figure 5A).

#### Conclusions

The stem insertion induces stress redistribution of the proximal and diaphysal femur. Less removal of the proximal bone stock makes the load-transferring pattern of the nonstemmed femur more physiologically similar to that of the intact femur. Without the inserted stem,

the central bar of the resurfacing system was highly stressed, making it prone to mechanical failure. Both contact situation and bone strength should be determinant factors of long-term stability of the nonstemmed system. For the cup-shaped system, the cup should be the custom-made and the underlaid cortex could be preserved to provide more intimate and stronger support to the superimposed cup. If the cup can be definitely stabilized, the nonstemmed design could be an alternative for the younger or the specific patients with the disease limited only to the femoral head.

#### Abbreviations

THR: Total hip replacement; CT: Computed tomography.

#### Competing interests

The authors declare that they have no competing interests.

#### Authors' contributions

CMC and SCL conceived of the study, participated in the design of the study and performed the data analyses. They formulated the model and drafted the manuscript with the help of WCT and CST. All authors carried out the analysis, read, and approved the final manuscript.

#### Acknowledgements

We would like to thank Chi-Pin Hsu for his help in three-dimensionally reconstruction of the proximal femur and Wen-Hsien Chuang for his participation in scanning *in vivo* using computed tomography.

#### Author details

<sup>1</sup>Department of Mechanical Engineering, National Central University, Taoyuan, Taiwan. <sup>2</sup>BoneCare Orthopedic Centers, Han-Chiung Clinics, Taipei, Taiwan. <sup>3</sup>Department of Orthopedic Surgery, National Taiwan University Hospital, Taipei, Taiwan. <sup>4</sup>Graduate Institute of Biomedical Engineering, National Taiwan University of Science and Technology, No. 43, Sec. 4, Keelung Rd, Taipei 106, Taiwan.

Received: 2 April 2014 Accepted: 18 September 2014

Published: 26 September 2014

#### References

- Callaghan JJ, Forest EE, Olejniczak JP, Goetz DD, Johnston RC: **Charnley total hip arthroplasty in patients less than fifty years old. A twenty to twenty-five-year follow-up note.** *J Bone Joint Surg Am* 1998, **80**:704–714.
- Chiu KY, Ng TP, Tang WM, Poon KC, Ho WY, Yip D: **Charnley total hip arthroplasty in Chinese patients less than 40 years old.** *J Arthroplasty* 2001, **16**:92–101.
- Keener JD, Callaghan JJ, Goetz DD, Pederson DR, Sullivan PM, Johnston RC: **Twenty-five-year results after Charnley total hip arthroplasty in patients less than fifty years old: a concise follow-up of a previous report.** *J Bone Joint Surg Am* 2003, **85**:1066–1072.
- Park YS, Lee JY, Yun SH, Jung MW, Oh I: **Comparison of hydroxyapatite- and porous-coated stems in total hip replacement.** *Acta Orthop Scand* 2003, **74**:259–263.
- Epinette JA, Manley MT: **Fifteen years of clinical experience with hydroxyapatite coating in joint arthroplasty.** In *Springer, Health and Medicine - Medical Specialties*. New York: Clinical; 2003:217–224.
- Lutz A, Nackenhorst U, Lewinski G, Windhagen H, Floerkemeier T: **Numerical studies on alternative therapies for femoral head necrosis. A finite element approach and clinical experience.** *Biomech Model Mechanobiol* 2010, **10**:627–640.
- Chen WP, Tai CL, Shih CH, Hsieh PH, Leou MC, Lee MS: **Selection of fixation devices in proximal femur rotational osteotomy: clinical complications and finite element analysis.** *Clin Biomech* 2004, **19**:255–262.
- Mont MA, Hungerford DS: **Non-traumatic avascular necrosis of the femoral head.** *J Bone Joint Surg Am* 1995, **77**:459–474.



9. Siguier T, Siguier M, Judet T, Charnley G, Brumpt B: **Partial resurfacing arthroplasty of the femoral head in avascular necrosis. Methods, Indications, and Results.** *Clin Orthop* 2001, **386**:85–92.
10. Orishimo KF, Claus AM, Sychterz CJ, Engh CA: **Relationship between polyethylene wear and osteolysis in hips with a second-generation porous-coated cementless cup after seven years of follow-up.** *J Bone Joint Surg Am* 2003, **85**:1095–1099.
11. Joshi MG, Advani SG, Miller F, Santare MH: **Analysis of a femoral hip prosthesis designed to reduce stress shielding.** *J Biomech* 2000, **33**:1655–1662.
12. Shih CH, Chen WP, Tai CL, Kuo RF, Wu CC, Chen CH: **New concepts-biomechanical studies of a newly designed femoral prosthesis (cervico-trochanter prosthesis).** *Clin Biomech* 1997, **12**:482–490.
13. Chen WP, Tai CL, Lee MS, Lee PC, Liu CP, Shih CH: **Comparison of stress shielding among different cement fixation modes of femoral stem in total hip arthroplasty – A three-dimensional finite element analysis.** *J Med Biol Eng* 2004, **24**:183–187.
14. Tai CL, Chen WP, Lee MS, Lee PC, Shih CH: **Comparison of stress shielding between straight and curved stem in cementless total hip arthroplasty – an in vitro experimental study.** *J Med Biol Eng* 2004, **24**:177–181.
15. Padgett DE, Warashina H: **The unstable total hip replacement.** *Clin Orthop* 2004, **420**:72–79.
16. Maloney WJ, Schmalzried T, Harris WH: **Analysis of long-term cemented total hip arthroplasty retrievals.** *Clin Orthop* 2003, **405**:70–78.
17. Bugbee WD, Culpepper WJ, Engh CA, Engh CA: **Long-term clinical consequences of stress-shielding after total hip arthroplasty without cement.** *J Bone Joint Surg Am* 1997, **79**:1007–1012.
18. Tai CL, Shih CH, Chen WP, Lee SS, Liu YL, Hsieh PH, Chen WJ: **Finite element analysis of the cervico-trochanteric stemless femoral prosthesis.** *Clin Biomech* 2003, **18**:S53–S58.
19. Munting E, Verhelpen M: **Fixation and effect on bone strain pattern of a stemless hip prosthesis.** *J Biomech* 1995, **28**:949–961.
20. Chen TH, Lung CY, Cheng CK: **Biomechanical comparison of a new stemless hip prosthesis with different shapes-a finite element analysis.** *J Med Biol Eng* 2009, **29**:108–113.
21. Barrett ARW, Davies BL, Gomes MPSF, Harris SJ, Henckel J, Jakopec M, Baena FMR, Cobb JP: **Preoperative planning and intraoperative guidance for accurate computer-assisted minimally invasive hip resurfacing surgery.** *Proc IMechE Part H: J Eng Med* 2006, **220**:759–773.
22. Adams D, Quigley S: **Hip resurfacing: Past, present and future.** *J Orthop Nursing* 2005, **9**:87–94.
23. Amstutz HC, Duff MJL, Campbell PA, Dorey FJ: **The Effects of Technique Changes on Aseptic Loosening of the Femoral Component in Hip Resurfacing.** *J Arthroplasty* 2007, **22**:481–489.
24. Huang CY, Luo LJ, Lee PY, Lai JY, Wang WT, Lin SC: **Efficient segmentation algorithm for 3D bone models construction on medical images.** *J Med Biol Eng* 2010, **31**:375–386.
25. Brand RA, Pedersen DR, Friederich JA: **The sensitivity of muscle force predictions to changes in physiologic cross-sectional area.** *J Biomech* 1986, **19**:589–596.
26. Huiskes R, Boeklagen R: **Mathematical shape optimization of hip prosthesis design.** *J Biomech* 1989, **22**:793–804.
27. Duda GN, Brand D, Freitag S, Lierse W, Schneider E: **Variability of femoral muscle attachments.** *J Biomech* 1996, **29**:1185–1190.
28. Simoes JA, Vaz MA, Blatcher S, Taylor M: **Influence of head constraint and muscle forces on the strain distribution within the intact femur.** *Med Eng Phy* 2000, **22**:453–459.
29. Taylor ME, Tanner KE, Freeman MAR, Yettram AL: **Stress and strain distribution within the intact femur: compression or bending?** *Med Eng Phy* 1996, **18**:122–131.
30. Shih KS, Tseng CS, Lee CC, Lin SC: **Influence of muscular contractions on the stress analysis of distal femoral interlocking nailing.** *Clin Biomech* 2008, **23**:38–44.
31. Hoffer CE, Moore KE, Kozloff K, Zysset PK, Goldstein SA: **Age, gender, and bone lamellae elastic moduli.** *J Orthop Res* 2000, **18**:432–437.
32. Reilly DT, Burstein AH: **The elastic and ultimate properties of compact bone tissue.** *J Biomech* 1975, **8**:393–405.
33. Wirtz DC, Schiffers N, Pandorf T, Radermacher K, Weichert D, Forst R: **Critical evaluation of known bone material properties to realize anisotropic FE-simulation of the proximal femur.** *J Biomech* 2000, **33**:1325–1330.
34. Spears IR, Morlock MM, Pfeleiderer M, Schneider E, Hille E: **The influence of friction and interference on the seating of a hemispherical press-fit cup: a finite element investigation.** *J Biomech* 1999, **32**:1183–1189.
35. Nuno N, Groppetti R, Senin N: **Static coefficient of friction between stainless steel and PMMA used in cemented hip and knee implants.** *Clin Biomech* 2006, **21**:956–962.
36. Chen CC, Cheng CT, Lin CS, Lin SC, Chiang CC, Luo CA, Tseng CS: **Biomechanical effects of bone-implant fitness and screw breakage on the stability and stress performance of the nonstemmed hip system.** *Clin Biomech* 2014, **29**:161–169.
37. Asgari SA, Hamouda AMS, Mansor SB, Singh H, Mahdi E, Wirza R, Prakash B: **Finite element modeling of a generic stemless hip implant design in comparison with conventional hip implants.** *Finite Elem Anal Des* 2004, **40**:2027–2047.

doi:10.1186/1471-2474-15-312

**Cite this article as:** Chen et al.: Effects of stemmed and nonstemmed hip replacement on stress distribution of proximal femur and implant. *BMC Musculoskeletal Disorders* 2014 **15**:312.

**Submit your next manuscript to BioMed Central and take full advantage of:**

- Convenient online submission
- Thorough peer review
- No space constraints or color figure charges
- Immediate publication on acceptance
- Inclusion in PubMed, CAS, Scopus and Google Scholar
- Research which is freely available for redistribution

Submit your manuscript at  
www.biomedcentral.com/submit

