

Study protocol

Open Access

Does physical activity change predict functional recovery in low back pain? Protocol for a prospective cohort study

Paul Hendrick*¹, Stephan Milosavljevic¹, Melanie L Bell², Leigh Hale¹, Deirdre A Hurley³, Suzanne M McDonough⁴, Markus Melloh⁵ and David G Baxter¹

Address: ¹Centre for Physiotherapy Research, School of Physiotherapy, University of Otago, Dunedin, New Zealand, ²Department of Preventive and Social Medicine, Dunedin School of Medicine, University of Otago, Dunedin, New Zealand, ³School of Physiotherapy and Performance Science, College of Life Sciences, University College Dublin, Ireland, ⁴Health & Rehabilitation Sciences Research Institute, School of Health Sciences, University of Ulster, Northern Ireland and ⁵Section of Orthopaedic Surgery, Department of Medical and Surgical Sciences, Dunedin School of Medicine, University of Otago, Dunedin, New Zealand

Email: Paul Hendrick* - paul.hendrick@otago.ac.nz; Stephan Milosavljevic - stephan.milosavljevic@otago.ac.nz; Melanie L Bell - melanie.bell@stonebow.otago.ac.nz; Leigh Hale - leigh.hale@otago.ac.nz; Deirdre A Hurley - deirdre.hurleyosing@ucd.ie; Suzanne M McDonough - S.McDonough@ulster.ac.uk; Markus Melloh - markus.melloh@otago.ac.nz; David G Baxter - david.baxter@otago.ac.nz

* Corresponding author

Published: 6 November 2009

Received: 1 July 2009

BMC Musculoskeletal Disorders 2009, 10:136 doi:10.1186/1471-2474-10-136

Accepted: 6 November 2009

This article is available from: <http://www.biomedcentral.com/1471-2474/10/136>

© 2009 Hendrick et al; licensee BioMed Central Ltd.

This is an Open Access article distributed under the terms of the Creative Commons Attribution License (<http://creativecommons.org/licenses/by/2.0>), which permits unrestricted use, distribution, and reproduction in any medium, provided the original work is properly cited.

Abstract

Background: Activity advice and prescription are commonly used in the management of low back pain (LBP). Although there is evidence for advising patients with LBP to remain active, facilitating both recovery and return to work, to date no research has assessed whether objective measurements of free living physical activity (PA) can predict outcome, recovery and course of LBP.

Methods: An observational longitudinal study will investigate PA levels in a cohort of community-dwelling working age adults with acute and sub-acute LBP. Each participant's PA level, functional status, mood, fear avoidance behaviours, and levels of pain, psychological distress and occupational activity will be measured on three occasions during for 1 week periods at baseline, 3 months, and 1 year. Physical activity levels will be measured by self report, RT3 triaxial accelerometer, and activity recall questionnaires. The primary outcome measure of functional recovery will be the Roland Morris Disability Questionnaire (RMDQ). Free living PA levels and changes in functional status will be quantified in order to look at predictive relationships between levels and changes in free living PA and functional recovery in a LBP population.

Discussion: This research will investigate levels and changes in activity levels of an acute LBP cohort and the predictive relationship to LBP recovery. The results will assess whether occupational, psychological and behavioural factors affect the relationship between free living PA and LBP recovery. Results from this research will help to determine the strength of evidence supporting international guidelines that recommend restoration of normal activity in managing LBP.

Trial registration: [Clinical Trial Registration Number, ACTRN12609000282280]

Background

Low back pain (LBP) is a common [1] costly [2] and at times disabling condition [3] with a high prevalence across a range of occupational settings [4-7]. Although LBP mostly settles within 3-4 weeks [8] of onset, a significant proportion will either not resolve or will recur [9]. The direct and indirect healthcare costs associated with chronic LBP and resultant disability and work absence are considerable [10]. In an attempt to reduce costs and facilitate return to work, national and international LBP guidelines [11,12] recommend restoration of normal activity as an integral part of the management of acute and sub-acute back pain, and occupational health guidelines recommend and encourage an early return to work [13]. Advice to stay active as an adjunct to exercise produced more favourable results than exercise alone when included in standard care for patients with acute LBP [14] and there is strong evidence for supporting early mobilisation and activity in the treatment of acute LBP [15,16].

Currently there is limited evidence for physical activity (PA) facilitating prognosis of occupational LBP [17-19]. One study found that regular exercise outside of work tended to protect against recurrence of work-related LBP [19], and another that leisure time PA levels were predictive of return to work in patients who had undergone a light mobilization program after initial LBP sick leave [17]. Storheim [18] also found a significant positive relationship between higher fitness levels and return to work in patients with chronic LBP. A number of studies have explored relationships between PA and risk of developing occupational LBP [20-22], or looked for relationships between pre-injury activity and LBP outcome [23]. A recent systematic review did not identify activity level as a predictor for return to work in patients with acute LBP [24], however none of the included studies objectively and prospectively measured PA, and its relationship to outcome.

Cross sectional studies provide little evidence for a direct link between PA and LBP outcomes [25-27] and prospective cohort studies investigating the potential relationships between PA levels and LBP show mixed results [28-31]. Bousema [29] employed an accelerometer to measure PA at two time points over a 1 year period and reported no difference in PA level changes between groups classified as "recovered LBP" and "non-recovered LBP". Similarly, Leonhardt [30], using an activity recall questionnaire, found that development of chronic pain had no influence on the total energy expenditure at six months in a mixed cohort of patients with acute and chronic LBP. Hurwitz [28] reported that both the cross sectional and longitudinal odds ratio for back disability were significantly reduced in those who had the greatest levels of leisure time PA levels. However, Mortimer [31] found that non-

specific regular exercise (measured with a recall questionnaire) did not seem to improve LBP outcomes at 5 year follow-up. Thus evidence for a relationship between PA levels in free living and functional recovery in patients with LBP appears to be equivocal.

Research priorities in LBP and the prevention of work-related musculoskeletal disorders recommend prospective studies to monitor and assess the natural course of LBP over time, and in particular to look at factors that are predictors for chronicity and search for effective preventive measures [32,33]. Dose response relationships between activity levels, including types, frequencies and duration should also be explored using validated functional outcome measures [34,35].

Accurate assessment of the amount and intensity of PA in daily life is considered important due to the strong relationship between PA levels, health and disability [36,37]. However, it is recognised that the measurement and capture of the various dimensions of PA in free living is problematic [38]. Variance and fluctuations within normal free living activity levels, [39,40] and debate regarding measurement tools and time required to accurately portray and reliably measure free living PA, [41,42] mean that there is a lack of consensus on an optimal approach to measure free living activity. However, recommendations suggest a repeated measures (longitudinal) design that includes an objective measure of PA [43,44] will likely provide the most accurate method of estimating PA in free living [45]. To date no studies have prospectively employed an objective measure of PA to investigate the predictive relationship between PA in free living and a validated LBP outcome in a cohort of patients with acute LBP.

Accelerometers provide an objective tool for the assessment of PA in free living populations over periods long enough to be representative for normal daily life [44]. Tri-axial accelerometers have been used to measure and quantify PA within several patient populations [46-48]. The RT3 triaxial accelerometer provides a valid and reliable measure of PA [49-51] and has been previously utilised as a measure of PA change within defined patient populations [52,53].

Methods

Research objectives

1. To investigate the predictive relationship between change in objectively measured PA levels in a cohort of patients with acute (< 6 weeks' duration) LBP [54] from baseline to 3 months, and change in functional outcome at 3 months and recovery over a 1 year period.
2. To assess the effect of occupation and occupational activity levels, personal factors, pain levels, functional sta-

tus and psychosocial profile on the relationship between PA levels and LBP outcomes at 3 months and at 1 year.

3. To determine the relationship between restoration of "normal" levels of PA as considered by the patient and functional recovery.

Hypotheses

Three specific hypotheses will be tested:

1. Positive changes in PA levels of participants with acute LBP (from baseline to 3 months) are a positive predictor of recovery (defined from change score in *Roland Morris Disability Questionnaire*) [54] at 3 months and at 1 year;

2. Psychosocial factors including levels of fear avoidance beliefs, depression and anxiety and occupational factors including types of occupation and levels of manual or sedentary work act as confounders in the relationship between activity change and the course of LBP over a 1 year period;

3. Restoration of "normal" levels of PA at baseline and at 3 months is a positive predictor of functional recovery over a 1 year period.

Study design

A cohort study recruiting patients by public advertising: this will include local newspapers, public notice boards, posters, mail-outs to local physiotherapy clinics in the urban and sub-urban environment of a city in New Zealand, as well as email notification of university staff and students at the University of Otago, Dunedin. All participants who are interested in the study will be encouraged to contact the principal investigator (PI) via telephone or e-mail. Recruitment will take place over a one year period. Assessment and monitoring of each participant's activity levels will take place after attending their physiotherapist for acute LBP treatment with follow-up assessments and activity measurements at 3 and 12 months.

The study protocol has been approved by the Lower South Regional Ethics Committee (LRS/07/11/043) and the Ngāi Tahu Research Committee following Māori consultation.

Inclusion and exclusion criteria

To be eligible to take part in the study, participants must fulfil the following criteria:

1) Have an episode of LBP of 6 weeks or less, preceded by at least 3 months of relative freedom from symptoms. These inclusion criteria will effectively exclude the chronic LBP population (defined as symptoms exceeding 3 months) [55].

2) Be between the ages of 18 and 65 years (working age population).

3) Be English speaking and able to provide informed consent to PA monitoring and follow up for 12 weeks.

4) Have no other pre-existing conditions which limit their mobility of PA levels.

5) Be receiving physiotherapy treatment for this current episode of acute LBP. This threshold was chosen to make results generalizable to this specific patient population.

6) Have a minimal score of 4 on the RMDQ. This score will allow for the detection of the smallest clinically important change [55].

The following exclusion criteria will be investigated at an initial screening interview by the PI prior to recruitment:

1) Serious or systemic spinal pathologies including persistent or progressive neurological deficit, intractable pain, spinal surgery, or inflammatory disorders as assessed by their health practitioner or by screening questions from the co-investigator.

2) Any history of current or past medical problems (other than LBP) which prevent participants from undertaking usual day-to-day activities.

Clinical screening

The PI will arrange a suitable appointment to determine eligibility for inclusion into the study based on a screening questionnaire administered via telephone which will search for evidence of serious spinal pathology and discuss the study protocol and requirements of the participant. The screening questionnaire is adapted from the New Zealand Accident Compensation Corporation (ACC) guidelines [12] which have been designed to detect any potentially significant symptoms of serious spinal pathology. Evidence for such a disorder will exclude the participant from the study.

Research protocol and timetable

At an initial visit each participant's weight, height, age, sex, occupation and ethnicity will be recorded. Occupation coding will be carried out according to Australian and New Zealand Standard Classification of Occupations [56]. Also recorded, whether the participant is working or off-work due to the current LBP episode, the number of days of the week and total average hours that each participant works, and whether the participant considers their work to be either manual or sedentary. This occupational information will be used to provide a baseline descriptive account of the group, and also included as a potential

confounder in the relationship between PA and functional recovery.

Participants will complete a number of validated functional LBP outcome measures at baseline [57]. The primary outcome measure is the RMDQ, accepted as a valid and sensitive measure of condition-specific functional outcome in LBP populations [58], and considered as the preferred instrument for assessing change in function over time in LBP [59]. Secondary outcomes will be the *Visual Analogue Scale* (VAS) measure of pain over the past 7 days which has been shown to be a valid and reliable clinical measure of pain in LBP populations [60] and a specific activity question developed for this study which asks the participant whether they have returned to full "normal" activities since the episode of low back pain (Y/N).

Other measures will investigate for potential confounding factors in the relationship between PA and functional recovery (RMDQ). These are measurements of depression, anxiety, emotional distress and fear avoidance and occupational activity levels and intensity. The *Baecke Questionnaire* (BPAQ) will be used to record the level of PA in the month prior to the current episode of LBP and activity levels at the 1 year point. The BPAQ is a reliable and valid measure of activity in both free living and LBP populations [61,62]. This questionnaire is divided into 3 sections which are individually scored: leisure time index, work index and sports index. The BPAQ work index score will thus provide a measure of the relative intensity of work activities [63] and occupational activity levels [64]. Fear avoidance beliefs will be measured with the *Fear-Avoidance Beliefs Questionnaire* (FABQ); a reliable measure of pain-related fear in acute LBP [65] and a valid measure for functional disability in acute and chronic LBP populations [66,67]. The 12-item *General Health Questionnaire* (GHQ12) will be used as a validated measure for evaluating levels of anxiety and depression in the general population [68].

Physical activity measurement

All RT3 monitors will undergo testing prior to field use as part of the standardised protocol recommended when employing accelerometry measurement [69,70]. Previous research has shown high levels intra-monitor variability [49] and therefore each participant will be required to use the same RT3 monitor at baseline and 3 months. Field practice of monitor use and monitor placement will be standardised by asking the participants to wear the RT3 monitor on the right hip for all waking hours; to report wear times and reason for removal; to note the days that they work; and also to report sleep patterns [70] and hourly activities in an activity diary over the week [53].

The dimensions and specifics of the RT3 have been reported previously [49]. The RT3 triaxial accelerometer stores accumulated activity counts, derived from the three axes ($[X^2 + Y^2 + Z^2]^{0.5}$) to calculate a summed VM. Mode 4 will be employed for this study, which stores accumulated activity counts every second and calculates an average VM for each one-minute epoch over the 7 days of monitoring. Previous research has validated the use of RT3 VM counts as a measure of free living activity and energy expenditure [50].

Participants will be contacted twice during this week by text and/or phone to improve compliance in wearing the RT3, recording activity in the activity diary, and to address any problems the participants might be having with either the RT3 or in using the activity diary. At the completion of the week the RT3 data will be downloaded to a portable computer and each participant will complete a 7-day recall questionnaire (7D-PAR) [71,72]. The 7D-PAR provides an estimate of the average total daily energy expenditure (TDEE) and physical activity energy expenditure (PAEE) for each participant.

All participants will be sent a reminder letter between the first and second period of monitoring; further contact will be made approximately 1 week prior to their scheduled date for re-monitoring at the 3-month point. Each participant will then repeat the activity monitoring procedure as per the baseline. At completion of week 12 each participant will be asked to complete the RMDQ, VAS and simple activity question and in addition an RT3 utility questionnaire developed for this study. This will assess any specific utility issues of PA measurement within this patient population.

At 1 year each participant will be sent the following questionnaires: VAS, FABQ, RMDQ, the BPAQ, GHQ12 and a modified Nordic LBP Questionnaire [73] with a self return envelope. The Nordic LBP Questionnaire has been previously employed as a measure of LBP recovery in an occupational setting [74] and as a measure of incident LBP, for assessing the associations between physical activity and incidence of LBP [75]. The BPAQ will be used to record current levels of PA at the 1 year point. The estimated duration of the study will be approximately two years to complete recruitment and 1 year follow-up (Figure 1).

Data management

Following collection, data will be checked for accuracy and completeness and will involve:

- Download of all accelerometry data via Stay-Healthy™ software into an Excel database.

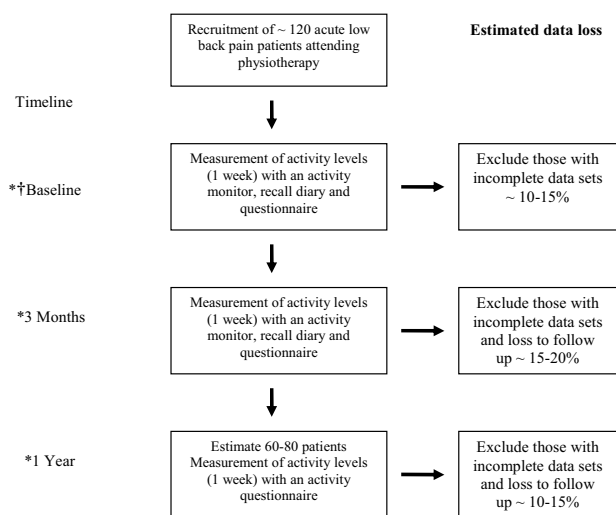


Figure 1
Outline of study protocol. *At each time point data on low back pain and functional recovery will be collected. † At baseline data on occupational, psychological and behavioural factors collected

- A visual review of all accelerometer data to determine the number of days of accelerometer data and to determine whether this satisfies the research protocol criteria.

The downloaded accelerometry data will be checked to ensure that the number of days of accelerometer data matched the protocol, to ascertain sleep times, and to identify possible RT3 malfunctions [76]. Data will then be scanned for nonworn periods. Such data will be set to 'missing' [70]. The data will then be separated into week-days and weekend days. The sum of RT3 activity counts for each day will be calculated as well as the total number of hours of activity data collected each day. Total weekly activity count will then be divided by the total number of hours worn from each valid day of data collection [76]. The total RT3 score for the 7 days of activity monitoring will be expressed as average VM counts/hour/week. Estimates of data loss and the reasons for any physical activity data loss will also be investigated and a sensitivity analysis performed to investigate the effect of wear time on the relationship between activity change and RMDQ [77].

Sample size and statistical power

We calculated sample size based upon the detection of a difference in change in RMDQ from baseline to three months in two groups classified as high changers in PA and low changers, as defined by the upper quartile of change in PA. This is a simplification of the actual analysis, but is conservative. The sample size is calculated for

80% power at a two-sided type I error rate of 0.05. Assuming a standard deviation of change in RMDQ score of 5.4 over a 3 month period, [78,79] the detection of a clinically meaningful change of 4 points in the RMDQ score from week 1 to week 12 [55,80], and an assumption of unequal group sizes, the required sample size is 65 participants. Previous research employing the RT3 in free living has found loss of data due to technical issues including monitor malfunction to be a significant issue [81,82]. Therefore a reasonably high attrition rate and potential dropout rate of 40-50% will be used over the 3 time points and this requires data from approximately 120 participants to be collected (Figure 1).

Analyses

Multiple linear regression will be used to investigate the associations of the main predictor variable, change in RT3 VM counts/hour/week ($\Delta RT3$) from baseline to 3 months, with the main outcome variable change in functional outcome ($\Delta RMDQ$). The change score will be calculated by subtracting each participant's 3 month RMDQ score from their baseline RMDQ score. Unadjusted and adjusted analyses will be performed. Adjusted analyses will include the following variables, shown to be putatively associated with both PA and functional recovery in LBP: age, gender, occupation, baseline pain level (pain questionnaire), functional status (baseline RMDQ) and baseline measurements of depression, anxiety, emotional distress and fear avoidance (GHQ12 and FABQ). We plan to analyze each of the explanatory variables univariately initially to assess the relationship with the dependant variable (RMDQ change). We will include factors in the model which in univariate analyses have a p -value < 0.10 . The significant explanatory variables contained in the separate models will then be combined and re-examined using further modeling. We plan to use multiple linear regression to assess which of the included explanatory variables and/or their interactions with PA change predict change in RMDQ. For those variables which remain in the final model, an examination of their significance ($p < 0.05$) will be undertaken to evaluate their contribution to the final model.

At 1 year the relationship between $\Delta RT3$ and presence or absence of on-going low back pain (Y/N) from the modified Nordic LBP questionnaire will be investigated using logistic regression. At 1 year the relationship between the BPAQ change score from baseline (pre-LBP) to BPAQ score at 1 year ($\Delta BPAQ$) with the outcome of on-going LBP (Y/N) will also be explored using logistic regression.

Discussion

There is also a need to evaluate cost-effective methods to manage LBP within the community [83] and to provide objective evidence for the role of activity in the manage-

ment of LBP [84]. This research will investigate whether relationships exist between objectively measured PA and functional recovery in a LBP population. Evidence for such effects will also allow assessment of the relationships between LBP recovery and reoccurrence at 1 year, occupational activity, and objectively measured free living activity. Such results will add to our knowledge on the relationships between the amount of, and changes in, free living activity relative to LBP recovery and might be an important step for determining future application of activity prescription and the potential use of activity monitoring in the management of primary care LBP.

It must also be acknowledged that this specific cohort, collected from physiotherapy practices, may differ in its activity levels; its view of activity and the advice it is given regarding activity when compared to all other community dwelling populations with acute LBP. It is therefore planned to assess the generalisability of the results from this study by comparing this cohort to other primary care cohorts investigating acute LBP within Australasia

Abbreviations

ACC: Accident Compensation Corporation; BPAQ: Baecke Physical Activity Questionnaire Fear-Avoidance Beliefs Questionnaire; GHQ12: 12-item General Health Questionnaire; LBP: low back pain; PA: physical activity; PAEE: physical activity energy expenditure; PI: principal investigator; RMDQ: Roland Morris Disability Questionnaire; VAS: Visual Analogue Scale; FABQ: TDEE: total daily energy expenditure; VM: Vector magnitude; Δ BPAQ: change in Baecke Physical Activity Questionnaire; Δ RT3: change in RT3 VM: Δ RMDQ: change in Roland Morris Disability Questionnaire score; 7D-PAR: 7-Day Recall Questionnaire.

Competing interests

The authors declare that they have no competing interests.

Authors' contributions

PH is the principal investigator. PH together with his supervisory team of SM, MB, LH and DB designed the study and were responsible for the protocol. SMC and DH acted as international advisors and helped in the development of key ideas underlying this study. MB is responsible for the sample size and power calculation, for the design of the statistical analysis and the evaluation of the database. MM helped in the study design and all authors read and approved the final manuscript.

Acknowledgements

This research is supported by a University of Otago establishment grant.

References

- Jacob T: **Low back pain incident episodes: a community-based study.** *Spine J* 2006, **6(3)**:306-310.
- Maniadakis N, Gray A: **The economic burden of back pain in the UK.** *Pain* 2000, **84(1)**:95-103.
- Derebery VJ, Giang GM, Saracino G, Fogarty WT: **Evaluation of the impact of a low back pain educational intervention on physicians' practice patterns and patients' outcomes.** *J Occup Environ Med* 2002, **44(10)**:977-984.
- Van Vuuren BJ, Becker PJ, Van Heerden HJ, Zinzen E, Meeusen R: **Lower back problems and occupational risk factors in a South African steel industry.** *Am J Ind Med* 2005, **47(5)**:451-457.
- Spyropoulos P, Papatheanasiou G, Georgoudis G, Chronopoulos E, Koutis H, Koumoutsou F: **Prevalence of low back pain in Greek public office workers.** *Pain Physician* 2007, **10(5)**:651-660.
- Khan MY, Siddiqui MA: **Prevalence of low back pain in computer users.** *Med Sci Q* 2005, **21(2)**:159-163.
- Milosavljevic S, Carman AB, Schneiders AG, Milburn PD, Wilson BD: **Three-dimensional spinal motion and risk of low back injury during sheep shearing.** *Appl Ergon* 2007, **38(3)**:299-306.
- Majid K, Truumees E: **Epidemiology and Natural History of Low Back Pain.** *Semin Spine Surg* 2008, **20(2)**:87-92.
- Abbot JH, Mercer SR: **The natural history of acute low back pain.** *NZ Journal Physiother* 2002, **30(3)**:8-16.
- Katz JN: **Lumbar disc disorders and low-back pain: Socioeconomic factors and consequences.** *J Bone Joint Surg* 2006, **88(Suppl 2)**:21-24.
- Van Tulder M, Becker A, Bekkering T, Breen A, Del Real MTG, Hutchinson A, et al.: **Chapter 3: European guidelines for the management of acute nonspecific low back pain in primary care.** *Eur Spine J* 2006, **15(Suppl 2)**:169-191.
- New Zealand Acute Low Back Pain Guide.** Accident Rehabilitation and Compensation Insurance Corporation of New Zealand, Wellington; 2004:23.
- Staal JB, Hlobil H, van Tulder MW, Waddell G, Burton AK, Koes BW, van Mechelen W: **Occupational health guidelines for the management of low back pain: an international comparison.** *Occup Environ Med* 2003, **60(9)**:618-626.
- Dianne Liddle S, Gracey JH, David Baxter G: **Advice for the management of low back pain: A systematic review of randomised controlled trials.** *Man Ther* 2007, **12(4)**:310-327.
- Waddell G, Feder G, Lewis M: **Systematic reviews of bed rest and advice to stay active for acute low back pain.** *Br J Gen Pract* 1997, **47(423)**:647-652.
- Hagen KB, Hilde G, Jamtvedt G, Winnem MF: **The Cochrane review of bed rest for acute low back pain and sciatica.** *Spine* 2000, **25(22)**:2932-2939.
- Haldorsen EM, Indahl A, Ursin H, Haldorsen EM, Indahl A, Ursin H: **Patients with low back pain not returning to work. A 12-month follow-up study.** *Spine* 1998, **23(11)**:1202-1207. discussion 1208
- Storheim K, Ivar Brox J, Holm I, Bø K: **Predictors of return to work in patients sick listed for sub-acute low back pain: A 12-month follow-up study.** *J Rehabil Med* 2005, **37(6)**:365-371.
- Oleske DM, Lavender SA, Andersson GBJ, Morrissey MJ, Zold-Kilbourn P, Allen C, Taylor E: **Risk factors for recurrent episodes of work-related low back disorders in an industrial population.** *Spine* 2006, **31(7)**:789-798.
- Hildebrandt VH, Bongers PM, Dul J, Van Dijk FJH, Kemper HCG: **The relationship between leisure time, physical activities and musculoskeletal symptoms and disability in worker populations.** *International Arch Environ Occup Health* 2000, **73(8)**:507-518.
- Leino-Arjas P, Solovieva S, Kirjonen J, Reunanen A, Riihimäki H: **Cardiovascular risk factors and low-back pain in a long-term follow-up of industrial employees.** *Scand J Work Environ Health* 2006, **32(1)**:12-19.
- Simes E, Sodal E, Nurk E, Tell GS: **Epidemiology of musculoskeletal complaints in Hordaland, Norway.** *Tidsskr Nor Laegeforen* 2003, **123(20)**:2855-2859.
- Enthoven P, Skargren E, Carstensen J, Oberg B, Enthoven P, Skargren E, et al.: **Predictive factors for 1-year and 5-year outcome for disability in a working population of patients with low back pain treated in primary care.[see comment].** *Pain* 2006, **122(1-2)**:137-144.
- Steenstra IA, Verbeek JH, Heymans MW, Bongers PM: **Prognostic factors for duration of sick leave in patients sick listed with acute low back pain: A systematic review of the literature.** *Occup Environ Med* 2005, **62(12)**:851-860.

25. Verbunt JA, Westerterp KR, Heijden GJ van der, Seelen HA, Vlaeyen JW, Knottnerus JA: **Physical activity in daily life in patients with chronic low back pain.** *Arch Phys Med Rehabil* 2001, **82(6)**:726-730.
26. Verbunt JA, Sieben JM, Seelen HA, Vlaeyen JW, Bousema EJ, Heijden GJ van der, Knottnerus JA, Verbunt Jeanine A, Sieben JM, Seelen HAM, Vlaeyen JWS, Bousema EJ, Heijden GJ van der, Knottnerus JA: **Decline in physical activity, disability and pain-related fear in sub-acute low back pain.** *Eur J Pain* 2005, **9(4)**:417-425.
27. Cunha IT, Simmonds MJ, Protas EJ, Jones S: **Back pain, physical function, and estimates of aerobic capacity: what are the relationships among methods and measures?** *Am J Phys Med Rehabil* 2002, **81(12)**:913-920.
28. Hurwitz EL, Morgenstern H, Chiao C: **Effects of recreational physical activity and back exercises on low back pain and psychological distress: findings from the UCLA Low Back Pain Study.** *Am J Public Health* 2005, **95(10)**:1817-1824.
29. Bousema EJ, Verbunt JA, Seelen HAM, Vlaeyen JWS, Andre Knottnerus J: **Disuse and physical deconditioning in the first year after the onset of back pain.** *Pain* 2007, **130(3)**:279-286.
30. Leonhardt C, Keller S, Chenot JF, Luckmann J, Basler HD, Wegscheider K, Baum E, Donner-Banzhoff N, Pflingsten M, Hildebrandt J, Kochen MM, Becker A: **TTM-based motivational counselling does not increase physical activity of low back pain patients in a primary care setting-A cluster-randomized controlled trial.** *Patient Educ Couns* 2008, **70**:50-60.
31. Mortimer M, Pernold G, Wiktorin C: **Low back pain in a general population. Natural course and influence of physical exercise - A 5-year follow-up of the Musculoskeletal Intervention Center-Norrtalje Study.** *Spine* 2006, **31(26)**:3045-3051.
32. Borkan JM, Koes B, Reis S, Cherklin DC: **A report from the Second International Forum for Primary Care Research on Low Back Pain. Reexamining priorities.** *Spine* 1998, **23(18)**:1992-1996.
33. Waters TR: **National efforts to identify research issues related to prevention of work-related musculoskeletal disorders.** *J Electromyogr Kinesiol* 2004, **14(1)**:7-12.
34. Vuori IM: **Dose-response of physical activity and low back pain, osteoarthritis, and osteoporosis.** *Med Sci Sports Exerc* 2001, **33(6 Suppl)**:551-586.
35. Shephard RJ: **Absolute versus relative intensity of physical activity in a dose-response context.** *Med Sci Sports Exerc* 2001, **33(6 Suppl)**:400-418.
36. Karmisholt K, Gotsche PC: **Physical activity for secondary prevention of disease. Systematic reviews of randomised clinical trials.** *Dan Med Bull* 2005, **52(2)**:90-94.
37. Pitta F, Troosters T, Probst VS, Spruit MA, Decramer M, Gosselink R: **Quantifying physical activity in daily life with questionnaires and motion sensors in COPD.** *Eur Respir J* 2006, **27(5)**:1040-1055.
38. Schutz Y, Weinsier RL, Hunter GR: **Assessment of free-living physical activity in humans: an overview of currently available and proposed new measures.** *Obes Res* 2001, **9(6)**:368-379.
39. Joosen AM, Gielen M, Vlietinck R, Westerterp KR: **Genetic analysis of physical activity in twins.** *Am J Clin Nutr* 2005, **82(6)**:1253-1259.
40. Matthews CE, Ainsworth BE, Thompson RW, Bassett DR Jr: **Sources of variance in daily physical activity levels as measured by an accelerometer.** *Med Sci Sports Exerc* 2002, **34(8)**:1376-1381.
41. Trost SG, Pate RR, Freedson PS, Sallis JF, Taylor WC: **Using objective physical activity measures with youth: how many days of monitoring are needed?** *Med Sci Sports Exerc* 2000, **32(2)**:426-431.
42. Baranowski T, de Moor C: **How many days was that? Intra-individual variability and physical activity assessment.** *Res Q Exerc Sport* 2000, **71(2)**:74-78.
43. Tudor-Locke CE, Myers AM: **Challenges and opportunities for measuring physical activity in sedentary adults.** *Sports Med* 2001, **31(2)**:91-100.
44. Chen KY, Bassett DR Jr: **The technology of accelerometry-based activity monitors: Current and future.** *Med Sci Sports Exerc* 2005, **37(11 Suppl)**:490-500.
45. Levin S, Jacobs DR Jr, Ainsworth BE, Richardson MT, Leon AS: **Intra-individual variation and estimates of usual physical activity.** *Ann Epidemiol* 1999, **9(8)**:481-488.
46. Steele BG, Belza B, Hunziker J, Holt L, Legro M, Coppersmith J, Buchner D, Lakshminaryan S: **Monitoring daily activity during pulmonary rehabilitation using a triaxial accelerometer.** *J Cardiopulm Rehabil* 2003, **23(2)**:139-142.
47. Neumann M, Friedmann J, Roy MA, Jensen GL: **Provision of high-protein supplement for patients recovering from hip fracture.** *Nutr* 2004, **20(5)**:415-419.
48. Ng AV, Kent-Braun JA: **Quantitation of lower physical activity in persons with multiple sclerosis.** *Med Sci Sports Exerc* 1997, **29(4)**:517-523.
49. Powell SM, Jones DI, Rowlands AV: **Technical variability of the RT3 accelerometer.** *Med Sci Sports Exerc* 2003, **35(10)**:1773-1778.
50. Rowlands AV, Thomas PWM, Eston RG, Topping R: **Validation of the RT3 triaxial accelerometer for the assessment of physical activity.** *Med Sci Sports Exerc* 2004, **36(3)**:518-524.
51. Chu EYW, McManus AM, Yu CCW: **Calibration of the RT3 accelerometer for ambulation and nonambulation in children.** *Med Sci Sports Exerc* 2007, **39(11)**:2085-2091.
52. Hertzog MA, Nieveen JL, Zimmerman LM, Barnason SA, Schulz PM, Miller CL, Rasmussen DA: **Longitudinal field comparison of the RT3 and an activity diary with cardiac patients.** *J Nurs Meas* 2007, **15(2)**:105-120.
53. Hale LA, Pal J, Becker I: **Measuring Free-Living Physical Activity in Adults With and Without Neurologic Dysfunction With a Triaxial Accelerometer.** *Arch Phys Med Rehabil* 2008, **89(9)**:1765-1771.
54. Grodte M, Brox JI, Vollestad NK: **Concurrent comparison of responsiveness in pain and functional status measurements used for patients with low back pain.[see comment].** *Spine* 2004, **29(21)**:E492-501.
55. van Tulder M, Becker A, Bekkering T, Breen A, del Real MT, Hutchinson A, Koes B, Laerum E, Malmivaara A: **Chapter 3. European guidelines for the management of acute nonspecific low back pain in primary care.** *Eur Spine J* 2006, **15(Suppl 2)**:169-191.
56. Australian Bureau of Statistics: *Australian and New Zealand Standard Classification of Occupations (ANZSCO) Coder* Canberra: Australian Bureau of Statistics; 2007.
57. Bombardier C, Hayden J, Beaton DE: **Minimal clinically important difference. Low back pain: Outcome measures.** *J Rheumatol* 2001, **28(2)**:431-438.
58. Turner JA, Fulton-Kehoe D, Franklin G, Wickizer TM, Wu R: **Comparison of the Roland-Morris Disability Questionnaire and generic health status measures: a population-based study of workers' compensation back injury claimants.** *Spine* 2003, **28(10)**:1061-1067.
59. Lauridsen HH, Hartvigsen J, Manniche C, Korsholm L, Grunnet-Nilsson N: **Responsiveness and minimal clinically important difference for pain and disability instruments in low back pain patients.** *BMC Musculoskelet Disord* 2006, **7**:82.
60. Williamson A, Hoggart B: **Pain: A review of three commonly used pain rating scales.** *J Clin Nurs* 2005, **14(7)**:798-804.
61. Pols MA, Peeters PH, Kemper HC, Collette HJ: **Repeatability and relative validity of two physical activity questionnaires in elderly women.** *Med Sci Sports Exerc* 1996, **28(8)**:1020-1025.
62. Jacob T, Baras M, Zeev A, Epstein L: **Low back pain: Reliability of a set of pain measurement tools.** *Arch Phys Med Rehabil* 2001, **82(6)**:735-742.
63. Ruzic L, Heimer S, Misigoj-Durakovic M, Matkovic BR: **Increased occupational physical activity does not improve physical fitness.** *Occup Environ Med* 2003, **60(12)**:983-985.
64. Evenson KR, Rosamond WD, Cai J, Pereira MA, Ainsworth BE: **Occupational physical activity in the Atherosclerosis Risk in Communities Study.** *Ann Epidemiol* 2003, **13(5)**:351-357.
65. Swinkels-Meeuwisse IEJ, Roelofs J, Verbeek ALM, Oostendorp RAB, Vlaeyen JWS: **Fear of movement/(re)injury, disability and participation in acute low back pain.** *Pain* 2003, **105(1-2)**:371-379.
66. Grodte M, Vollestad NK, Veierod MB, Brox JI: **Fear-avoidance beliefs and distress in relation to disability in acute and chronic low back pain.** *Pain* 2004, **112(3)**:343-352.
67. Woby SR, Watson PJ, Roach NK, Urmston M: **Adjustment to chronic low back pain--the relative influence of fear-avoidance beliefs, catastrophizing, and appraisals of control.** *Behav Res Ther* 2004, **42(7)**:761-774.
68. Croft PR, Papageorgiou AC, Ferry S, Thomas E, Jayson MV, Silman AJ: **Psychologic distress and low back pain: evidence from a prospective study in the general population.** *Spine* 1995, **15**:24:2731-2737.

69. Mathie MJ, Celler BG, Lovell NH, Coster AC: **Classification of basic daily movements using a triaxial accelerometer.** *Med Biol Eng Comput* 2004, **42(5)**:679-687.
70. Ward DS, Evenson KR, Vaughn A, Rodgers AB, Troiano RP: **Accelerometer use in physical activity: best practices and research recommendations.** *Med Sci Sports Exerc* 2005, **37(11 Suppl)**:582-588.
71. Washburn RA, Jacobsen DJ, Sonko BJ, Hill JO, Donnelly JE: **The validity of the Stanford Seven-Day Physical Activity Recall in young adults.** *Med Sci Sports Exerc* 2003, **35(8)**:1374-1380.
72. Bonnefoy M, Normand S, Pachiaudi C, Lacour JR, Laville M, Kostka T: **Simultaneous validation of ten physical activity questionnaires in older men: a doubly labeled water study.** *J Am Geriatr Soc* 2001, **49(1)**:28-35.
73. Hartvigsen J, Frederiksen H, Christensen K, Hartvigsen J, Frederiksen H, Christensen K: **Physical and mental function and incident low back pain in seniors: a population-based two-year prospective study of 1387 Danish Twins aged 70 to 100 years.** *Spine* 2006, **15(31)**:1628-1632.
74. Hartvigsen J, Bakketeig LS, Leboeuf-Yde C, Engberg M, Lauritzen T: **The association between physical workload and low back pain clouded by the "healthy worker" effect: population-based cross-sectional and 5-year prospective questionnaire study.** *Spine* 2001, **15(16)**:1788-1792. discussion 92-3
75. Hartvigsen J, Christensen K, Hartvigsen J, Christensen K: **Active lifestyle protects against incident low back pain in seniors: a population-based 2-year prospective study of 1387 Danish twins aged 70-100 years.** *Spine* 2007, **32(1)**:76-81.
76. Alhassan S, Sirard JR, Spencer TR, Varady A, Robinson TN: **Estimating physical activity from incomplete accelerometer data in field studies.** *J Phys Act Health* 2008, **5(Suppl 1)**:112-125.
77. Paul DR, Kramer M, Stote KS, Spears KE, Moshfegh AJ, Baer DJ, Rumppler WV: **Estimates of adherence and error analysis of physical activity data collected via accelerometry in a large study of free-living adults.** *BMC Med Res Methodol* 2008, **8**:38.
78. Stratford PW, Binkley JM, Riddle DL, Guyatt GH: **Sensitivity to change of the Roland-Morris Back Pain Questionnaire: Part 1.** *Phys Ther* 1998, **78(11)**:1186-1196.
79. Riddle DL, Stratford PW, Binkley JM: **Sensitivity to change of the Roland-Morris Back Pain Questionnaire: Part 2.** *Phys Ther* 1998, **78(11)**:1197-1207.
80. Ostelo RWJG, de Vet HCW: **Clinically important outcomes in low back pain.** *Best Pract Res Clin Rheumatol* 2005, **19(4)**:593-607.
81. Bousema EJ, Verbunt JA, Seelen HAM, Vlaeyen JWS, Andre Knotterus J: **Disuse and physical deconditioning in the first year after the onset of back pain.** *Pain* 2007, **130(3)**:279-286.
82. Matton L, Wijndaele K, Duvigneaud N, Duquet W, Philippaerts R, Thomis M, Lefevre J: **Reliability and validity of the Flemish physical activity computerized questionnaire in adults.** *Res Q Exerc Sport* 2007, **78(4)**:293-306.
83. Roer N van der, Goossens MEJB, Evers SMAA, van Tulder MW: **What is the most cost-effective treatment for patients with low back pain? A systematic review.** *Best Practice and Research: Clinical Rheumatology* 2005, **19(4)**:671-684.
84. Krismer M, van Tulder M, The Low Back Pain Group of the Bone and Joint Health Strategies for Europe P: **Strategies for prevention and management of musculoskeletal conditions: Low back pain (non-specific).** *Best Practice & Research in Clinical Rheumatology* 2007, **21(1)**:77-91.

Pre-publication history

The pre-publication history for this paper can be accessed here:

<http://www.biomedcentral.com/1471-2474/10/136/prepub>

Publish with **BioMed Central** and every scientist can read your work free of charge

"BioMed Central will be the most significant development for disseminating the results of biomedical research in our lifetime."

Sir Paul Nurse, Cancer Research UK

Your research papers will be:

- available free of charge to the entire biomedical community
- peer reviewed and published immediately upon acceptance
- cited in PubMed and archived on PubMed Central
- yours — you keep the copyright

Submit your manuscript here:
http://www.biomedcentral.com/info/publishing_adv.asp

