

Research article

Open Access

# The interaction of HAb18G/CD147 with integrin $\alpha6\beta1$ and its implications for the invasion potential of human hepatoma cells

Jing-yao Dai<sup>†1,2</sup>, Ke-feng Dou<sup>†2</sup>, Cong-hua Wang<sup>†3</sup>, Pu Zhao<sup>1</sup>, Wayne Bond Lau<sup>4</sup>, Ling Tao<sup>5</sup>, Ya-mei Wu<sup>1</sup>, Juan Tang<sup>1</sup>, Jian-li Jiang<sup>\*1</sup> and Zhi-nan Chen<sup>\*1</sup>

Address: <sup>1</sup>Cell Engineering Research Centre & Department of Cell Biology, State Key Laboratory of Cancer Biology, Fourth Military Medical University, No.17 West Changle Road, Xi'an 710032, Shaanxi, PR China, <sup>2</sup>Department of Hepatobiliary Surgery, First Affiliated Hospital, Fourth Military Medical University, No.17 West Changle Road, Xi'an 710032, Shaanxi, PR China, <sup>3</sup>Department of Clinical Immunology, First Affiliated Hospital, Fourth Military Medical University, No.17 West Changle Road, Xi'an 710032, Shaanxi, PR China, <sup>4</sup>Department of Emergency Medicine, Thomas Jefferson University, 1015 Walnut Street, Philadelphia, PA, 19107, USA and <sup>5</sup>Department of Cardiology, First Affiliated Hospital, Fourth Military Medical University, No.17 West Changle Road, Xi'an 710032, Shaanxi, PR China

Email: Jing-yao Dai - daijingyao2008@gmail.com; Ke-feng Dou - doukef@fmmu.edu.cn; Cong-hua Wang - conghuaconghua@gmail.com; Pu Zhao - zhaopu6687700@163.com; Wayne Bond Lau - waynebond.lau@jefferson.edu; Ling Tao - lingtao2006@gmail.com; Ya-mei Wu - rippleya@126.com; Juan Tang - tangjuanssunny@126.com; Jian-li Jiang\* - jiangjl@fmmu.edu.cn; Zhi-nan Chen\* - zhinanchen@fmmu.edu.cn

\* Corresponding authors †Equal contributors

Published: 23 September 2009

Received: 9 April 2009

BMC Cancer 2009, 9:337 doi:10.1186/1471-2407-9-337

Accepted: 23 September 2009

This article is available from: <http://www.biomedcentral.com/1471-2407/9/337>

© 2009 Dai et al; licensee BioMed Central Ltd.

This is an Open Access article distributed under the terms of the Creative Commons Attribution License (<http://creativecommons.org/licenses/by/2.0>), which permits unrestricted use, distribution, and reproduction in any medium, provided the original work is properly cited.

## Abstract

**Background:** HAb18G/CD147 plays pivotal roles in invasion by hepatoma cells, but the underlying mechanism remains unclear. Our previous study demonstrated that overexpression of HAb18G/CD147 promotes invasion by interacting with integrin  $\alpha3\beta1$ . However, it has never been investigated whether  $\alpha3\beta1$  is solely responsible for this process or if other integrin family members also interact with HAb18G/CD147 in human hepatoma cells.

**Methods:** Human SMMC-7721 and FHCC98 cells were cultured and transfected with siRNA fragments against HAb18G/CD147. The expression levels of HAb18G/CD147 and integrin  $\alpha6\beta1$  were determined by immunofluorescent double-staining and confocal imaging analysis. Co-immunoprecipitation and Western blot analyses were performed to examine the native conformations of HAb18G/CD147 and integrin  $\alpha6\beta1$ . Invasion potential was evaluated with an invasion assay and gelatin zymography.

**Results:** We found that integrin  $\alpha6\beta1$  co-localizes and interacts with HAb18G/CD147 in human hepatoma cells. The enhancing effects of HAb18G/CD147 on invasion capacity and secretion of matrix metalloproteinases (MMPs) were partially blocked by integrin  $\alpha6\beta1$  antibodies ( $P < 0.01$ ). Wortmannin, a specific phosphatidylinositol kinase (PI3K) inhibitor that reverses the effect of HAb18G/CD147 on the regulation of intracellular  $Ca^{2+}$  mobilization, significantly reduced cell invasion potential and secretion of MMPs in human hepatoma cells ( $P < 0.05$ ). Importantly, no additive effect between Wortmannin and  $\alpha6\beta1$  antibodies was observed, indicating that  $\alpha6\beta1$  and PI3K transmit the signal in an upstream-downstream relationship.

**Conclusion:** These results suggest that  $\alpha6\beta1$  interacts with HAb18G/CD147 to mediate tumor invasion and metastatic processes through the PI3K pathway.

## Background

CD147 is a transmembrane glycoprotein categorized as a member of the immunoglobulin superfamily (IgSF) [1-4]. CD147 was identified independently in various species and referenced throughout the literature as EMMPRIN (Extracellular Matrix Metalloproteinase-Inducer), M6 and HAb18G (human) [1,2,5], Neurothelin, 5A11 and HT7 (chicken) [6-8], OX47 and CE9 (rat) [3,9], and Basigin, gp42 (human and mouse) [4,10]. CD147 plays pivotal roles in the intercellular interactions involved in tumor metastasis and angiogenesis, spermatogenesis and fertilization [11,12], neural network formation and development [13,14], HIV infection, and rheumatoid arthritis [15,16]. Most importantly, studies from other investigators and our own laboratory have demonstrated that CD147 acts as a central factor in the stimulation of matrix metalloproteinases (MMPs) and promotes tumor invasion. However, intracellular signaling mechanisms responsible for CD147's stimulation of MMPs and tumor promoting effects remain incompletely understood.

Integrins are cell surface adhesive receptors composed of  $\alpha$ - and  $\beta$ -chain heterocomplexes that mediate physical and functional interactions between cells and the extracellular matrix. Variant integrins can interact with different ligands and vice versa. Integrins thus serve as bidirectional transducers of extracellular and intracellular signals in the processes of cell adhesion, proliferation, differentiation, apoptosis, and tumor progression. Normal adult hepatocytes express low levels of only three integrins:  $\alpha 1\beta 1$  (a collagen and laminin receptor),  $\alpha 5\beta 1$  (a fibronectin receptor), and  $\alpha 9\beta 1$  (a tenascin receptor). In contrast, other integrins (such as  $\alpha 2\beta 1$ ,  $\alpha 3\beta 1$ ,  $\alpha 6\beta 1$ , and  $\alpha 6\beta 4$ ) are not present in normal hepatocytes, but are expressed in hepatoma cells. However, the precise roles integrins play in liver carcinogenesis remain unclear.

In previous studies, CD147 was found to be associated with integrins  $\alpha 3\beta 1$  and  $\alpha 6\beta 1$ , but not  $\alpha 2\beta 1$  and  $\alpha 5\beta 1$  [17]. In a recent study, we demonstrated that  $\alpha 3\beta 1$  plays a critical role in CD147-mediated liver carcinogenesis, indicating that the interaction between CD147 and various integrins is a necessary step for their tumor-promoting effects [18]. However, it is unknown whether  $\alpha 3\beta 1$  is solely responsible for this process or if other integrin family members also interact with HAb18G/CD147 in human hepatoma cells. Given the fact that one of the most frequent alterations during liver carcinogenesis is de novo expression of the integrin  $\alpha 6\beta 1$  and that the induction of  $\alpha 6\beta 1$  expression is an early event in hepatocellular carcinogenesis [19-23], it is critical to clarify whether  $\alpha 6\beta 1$  interacts with CD147 and thus contributes to liver carcinogenesis.

In the present study, we demonstrated that HAb18G/CD147 interacts with integrin  $\alpha 6\beta 1$ , activates the PI3K

signal pathway through phosphorylation, and thereby enhances the invasion potential of hepatoma cells.

## Methods

### Cell culture

Human SMMC-7721 and FHCC98 cells (both obtained from the Institute of Cell Biology, Academic Sinica, Shanghai, China) were cultured with RPMI 1640 medium (Gibco, New York, USA) supplemented with 10% fetal bovine serum (FBS, Gibco, New York, USA), 1% penicillin/streptomycin, and 2% L-glutamine at 37°C in a humidified atmosphere of 5% CO<sub>2</sub>.

### Gene silencing of CD147 by RNA interference, RT-PCR and Western blot

The sense sequence for the HAb18G/CD147 small interfering RNA (siRNA) was 5'-GUU CUU CGU GAG UUC CUC TT-3', 3'-DTD TCA AGA AGC ACU CAA GGA G-5' (Ambion, USA). FHCC98 and 7721 cells were transfected with siRNA using Lipofectamine 2000 reagent (Invitrogen, USA) according to the manufacturer's instructions. Silencer-negative control siRNA (sncRNA) (Ambion, USA) was used as a negative control under similar conditions. Silencing effects of HAb18G/CD147 were examined by RT-PCR and Western blot.

Forty-eight hours after siRNA transfection, total RNA was isolated using Trizol (Invitrogen, Carlsbad, CA, USA) according to the manufacturer's instructions for use in the analysis of CD147 mRNA levels. The isolation was followed by first-strand cDNA synthesis using True Script reverse transcriptase (BioRad, Hercules, CA, USA). The cDNA was amplified by PCR using a specific primer set for CD147 or glyceraldehyde phosphate dehydrogenase (GAPDH) as an internal control. The sequences of the upstream and downstream primers were, respectively, as follows:

Sense: 5'-ACATCA ACG AGG GGG AGA CG-3'; Antisense: 5'-GGC TTC AGA CAG GCA GGA CA-3' for CD147 (492 bp); Sense: 5'-CTG AAC GGG AAG CTC ACT GG-3'; Antisense: 5'-TGA GGT CCA CCA CCC TGT TG-3' for GAPDH (313 bp). PCR analysis was performed under the following conditions: an initial denaturation at 94°C for 2 min followed by 25-30 cycles of a 30-sec denaturation step at 94°C, renaturation for 60 sec at 57°C, and extension for 90 sec at 72°C. The amplified products were analyzed by 1% agarose gel electrophoresis followed by GoldView™ staining. Forty-eight hours after siRNA transfection, FHCC98 and 7721 cells were harvested in a lysis buffer and equal amounts of cellular proteins were subjected to SDS-PAGE (10%). Proteins were transferred to polyvinylidene difluoride membranes and blots were probed with HAb18 mAb (prepared in our laboratory). GAPDH was chosen as an internal control and the blots were probed

with mouse anti-GAPDH mAb (Chemicon International, Inc.).

#### **Co-immunoprecipitation and Western blot analyses**

The interaction of HAb18G/CD147 with integrin  $\alpha 6\beta 1$  in native cells was detected using the ProFound™ Mammalian Co-Immunoprecipitation Kit (Pierce, USA) according to the manufacturer's instructions. Briefly, FHCC98 cells or 7721 cells ( $1 \times 10^6$ ) were lysed with M-per reagent. The lysate was collected onto a coupling gel by four washes with the co-immunoprecipitation buffer and which were pre-bound with 200  $\mu$ g mouse anti-human HAb18G/CD147 mAb/HAb18 (developed previously in our lab [24-27]) or 200  $\mu$ g mouse anti-human  $\alpha 6$  mAb (GoH3) (Santa Cruz, USA) and 200  $\mu$ g mouse anti-human  $\beta 1$  mAb (3S3) (Santa Cruz, USA). Bound proteins were eluted from the coupling gel with elution buffer, and aliquots of the elution were analyzed by Western blot using goat anti-human  $\alpha 6$  mAb (diluted 1:2000), anti-human  $\beta 1$  antibody (diluted 1:2000) or HAb18 (diluted 1:5000). Horseradish peroxidase (HRP)-conjugated rabbit anti-goat IgG (diluted 1:5000; Amersham Pharmacia) was used as the negative control.

#### **Immunofluorescence and confocal microscopy**

Cells were allowed to attach to precoated glass coverslips overnight. They were fixed the following day in 4% paraformaldehyde and then blocked with 2% bovine serum albumin (BSA) in phosphate-buffered saline (PBS) for 0.5 h. Coverslips were incubated with the primary antibodies (Santa Cruz) at a 1:200 dilution in PBS for 1 h. Primary antibody-treated cells were washed in PBS and then incubated with Allex594 goat anti-mouse (Invitrogen-Molecular Probe, USA) or fluorescein isothiocyanate (FITC)-conjugated donkey anti-goat secondary antibodies (Santa Cruz, USA) at a 1:500 dilution in PBS for 1 h. Cell nuclei were dyed with 4,6-diamino-2-phenyl indole (DAPI) (Invitrogen-Molecular Probe) for 3 min. Finally, the cells were mounted using glycerol and observed by FV1000 laser scanning confocal microscope (Olympus).

#### **Invasion assay**

The assay was performed using chambers with polycarbonate filters with 8- $\mu$ m nominal pore size (Millipore, USA) coated on the upper side with Matrigel (Becton Dickinson Labware, USA). The chambers were placed into a 24-well plate. Hepatoma cells were harvested after 24 h of siRNA transfection. Five groups of transfected cells ( $1 \times 10^5$ ) were harvested and placed in the upper chamber: transfected cells alone, cells treated with 10  $\mu$ g/mL anti-integrin  $\alpha 6\beta 1$  mAb, cells treated with 1  $\mu$ g/mL Wortmannin in 100  $\mu$ L RPMI 1640 containing 0.1% BSA, siRNA-transfected cells (negative control), and untreated cells (blank control). The lower chamber was filled with 600  $\mu$ L RPMI 1640 containing 5% FBS and then incubated for

24 h at 37°C in a humidified atmosphere containing 5% CO<sub>2</sub>. Cells remaining in the upper chamber were completely removed by gently swabbing. The number of cells that passed through the filter and invaded the lower chamber was determined using a colorimetric crystal violet assay.

#### **Gelatin zymography**

Twenty-four hours after siRNA transfection, cells were treated with antibodies or inhibitors in serum-free medium. Cells were incubated at 37°C for 20 h. The conditioned medium was collected and separated by 8% acrylamide gels containing 0.1% gelatin. The gels were incubated in a 2.5% Triton X-100 (Sigma, USA) solution at room temperature with gentle agitation and then were soaked in reaction buffer [50 mM Tris-HCl (pH 7.5), 200 mM NaCl, and 10 mM CaCl<sub>2</sub>] at 37°C overnight. The gels were stained for 6 h and destained for 0.5 h. The zones of gelatinolytic activity were revealed by negative staining.

#### **Western blot for Akt phosphorylation**

FHCC98 and 7721 cells were harvested in a lysis buffer, and equal amounts of cellular proteins were subjected to SDS-PAGE (10%). Proteins were transferred to PVDF membranes, and blots were probed with phosphorylated and non-phosphorylated forms of Akt. Blots were washed 3-5 min with Tris-buffered saline/0.1% Tween 20 and incubated with horseradish peroxidase-conjugated secondary antibody (1:2000) for 1 h. The membranes were washed as described above, and the bands detected by chemiluminescence (Amersham, Freiburg, German).

#### **Statistical analysis**

Statistical significance was determined using a one-way ANOVA analysis or Student's t-test. GraphPad Prism software (Cricket Software, Philadelphia, PA) was used for the above analyses and *P* values less than 0.05 were considered significant.

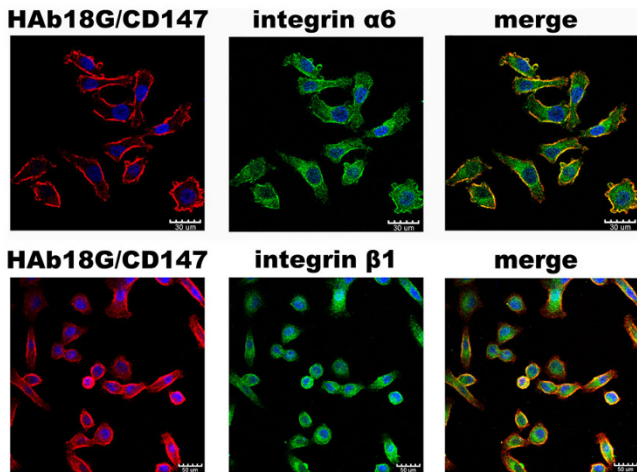
## **Results**

#### **HAb18G/CD147 co-localized with $\alpha 6\beta 1$ integrin on the surface of human hepatoma cells**

Immunofluorescent double-staining and confocal imaging analysis demonstrated that integrin  $\alpha 6\beta 1$  and HAb18G/CD147 were strongly expressed at the marginal areas of the two different hepatoma cell lines FHCC98 (Fig. 1) and 7721 (not shown). HAb18G/CD147 signals co-localized with integrin  $\alpha 6$  and  $\beta 1$  on the surface of HCC cells. The co-localizations were distributed diffusely throughout the membrane.

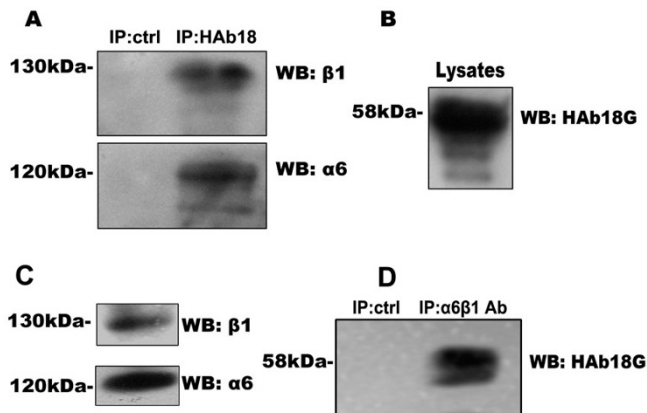
#### **HAb18G/CD147 immunoprecipitates with $\alpha 6\beta 1$ integrin in human hepatoma cells**

To verify whether HAb18G/CD147 interacts with integrin  $\alpha 6\beta 1$  in hepatoma cells, we performed co-immunoprecip-



**Figure 1**  
**Expression and co-localization of HAb18G/CD147 with integrin  $\alpha6$  and  $\beta1$  subunits in FHCC98 cells.**  
 FHCC98 cells were double-stained for HAb18G/CD147 (red) and integrin  $\alpha6$  or  $\beta1$  (green).

itation experiments in FHCC98 (Fig. 2) and 7721 (not shown) cells. As Fig. 2 demonstrates, integrin  $\alpha6$  and  $\beta1$  subunits co-immunoprecipitate with endogenous HAb18G/CD147 in FHCC98 cells. The same finding occurred in 7721 cell lysates (results not shown). The results indicated that HAb18G/CD147 and  $\alpha6\beta1$  integrin interact in their native conformations.



**Figure 2**  
**Immunoprecipitation of HAb18G/CD147 and integrin  $\alpha6$  and  $\beta1$  subunits in FHCC98 cells.** (A) Precipitates from HAb18G/CD147 immunocomplexes were assayed for precipitated integrin  $\alpha6$  and  $\beta1$  subunits. Precipitates from irrelevant antibody (Mouse IgG) were used as a negative control. (B) Expression of HAb18G/CD147 in FHCC98 cell lysates by Western blot. (C) Expression of integrin  $\alpha6$  and  $\beta1$  subunits in FHCC98 cell lysates by Western blot. (D) Precipitates from  $\alpha6\beta1$  immunocomplexes were assayed for precipitated HAb18G/CD147. Precipitates from irrelevant antibody (Mouse IgG) were used as a negative control.

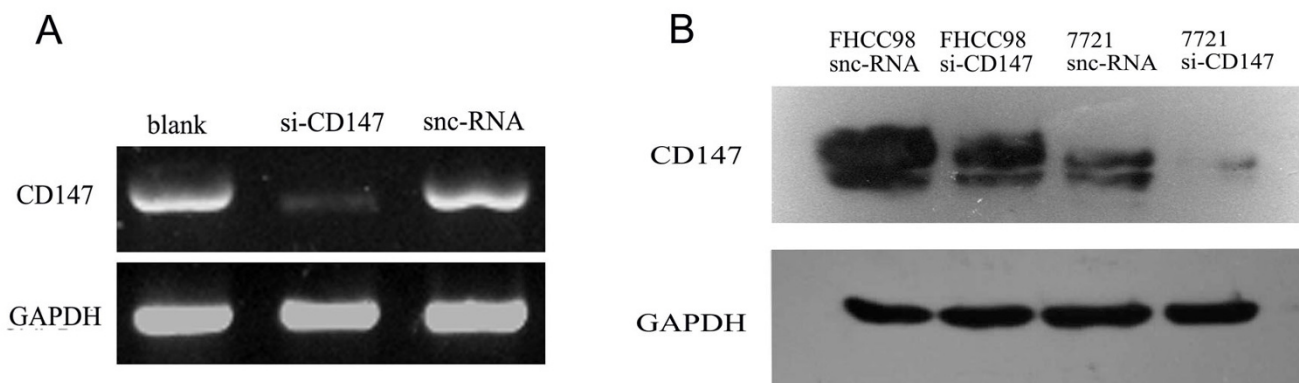
**Effects of silencing HAb18G/CD147 on FHCC98 and 7721 cells**

To investigate the role of HAb18G/CD147 in FHCC98 and 7721 cells, RNA interference was used to knock down the expression of HAb18G/CD147 in these two cell lines. The HAb18G/CD147-specific siRNA (siCD147) and sncRNA were tested for their ability to specifically suppress HAb18G/CD147. RT-PCR showed that the sncRNA was incapable of inhibiting HAb18G/CD147 gene expression, whereas siCD147 could effectively decrease the mRNA expression of HAb18G/CD147 (Fig. 3A). Similar results were obtained in 7721 cells (data not shown). These results were confirmed by Western blot. The protein expression of HAb18G/CD147 was obviously decreased in siCD147-transfected cells, but not in sncRNA-transfected cells 48 h after siRNA transfection (Fig. 3B). These data show that siCD147 treatment effectively decreased HAb18G/CD147 expression in FHCC98 and 7721 cells.

**Integrin  $\alpha6\beta1$  mediates HAb18G/CD147-induced invasion of human hepatoma cells**

In order to clarify the functional association of HAb18G/CD147 with integrin  $\alpha6\beta1$ , the effect of anti-integrin  $\alpha6$  mAb (GoH3) and  $\beta1$  mAb (3S3) on the invasion of FHCC98 and 7721 cells were examined in the presence of HAb18G/CD147 gene silencing. Silencing of the HAb18G/CD147 gene was achieved by transfection of FHCC98 and 7721 cells with the HAb18G/CD147-specific siRNA. To explore the nature of the integrins involved in HAb18G/CD147-mediated invasion, experiments were reproduced with blocking antibodies to  $\alpha6$  and  $\beta1$ . As shown in Fig. 4, there was no significant difference between the invasive cell numbers of sncRNA-transfected and blank FHCC98 cells. In contrast, transfection with sncRNA+GoH3, sncRNA+3S3, and sncRNA+GoH3+3S3 reduced invasive cell numbers by  $32.37 \pm 14.10\%$ ,  $31.07 \pm 4.82\%$ , and  $34.89 \pm 12.15\%$ , respectively, as compared to the blank group ( $P < 0.01$ ). FHCC98 cells transfected with siHAb18G/CD147 demonstrated significantly reduced invasive cell numbers by  $28.01 \pm 5.56\%$  ( $P < 0.01$ ), but there was no significant difference in comparison to sncRNA+GoH3, sncRNA+3S3, and sncRNA+GoH3+3S3 cell groups. When cells were treated with siHAb18G/CD147+GoH3, si-HAb18G/CD147+3S3, or siHAb18G/CD147+GoH3+3S3, the invasive cell numbers were also significantly reduced by  $29.21 \pm 9.18\%$ ,  $23.53 \pm 6.44\%$ , and  $30.28 \pm 8.04\%$ , as compared to the blank group respectively ( $P < 0.01$ ). In comparison to the siHAb18G/CD147-treated alone group, no difference was found. Similar results were obtained in 7721 cells (data not shown).

After siRNA transfection or treatment with blocking mAb against integrin  $\alpha6\beta1$ , the supernatants of FHCC98 and 7721 cells were collected to test the levels of MMP secre-



**Figure 3**  
**Effect of silencing HAb18G/CD147 in FHCC98 and 7721 cells.** Forty-eight hours after siCD147 or sncRNA transfection of FHCC98 and 7721 cells, HAb18G/CD147 expression levels were examined by RT-PCR (A) and Western blot (B).

tion. Results from the gelatin zymography assay showed that secretion of both MMP-2 and MMP-9 was significantly reduced in FHCC98 and 7721 cells after treatment with siRNA or antibodies. As shown in Fig. 5, the density of MMPs in FHCC98 cell lines after treatment with sncRNA associated with GoH3, 3S3, and GoH3+3S3 was reduced by  $32.55 \pm 3.01\%$ ,  $34.81 \pm 6.25\%$ , and  $29.09 \pm 5.33\%$ , respectively ( $P < 0.01$ ), as compared to the blank group. The MMPs levels in siHAb18G/CD147-transfected FHCC98 cells were also significantly reduced by  $21.31 \pm 9.98\%$  ( $P < 0.01$ ), but there was no significant difference in comparison to the sncRNA+GoH3, sncRNA+3S3, and sncRNA+GoH3+3S3 groups. The density of MMPs in the siHAb18G/CD147+GoH3, siHAb18G/CD147+3S3, and siHAb18G/CD147+GoH3+3S3 groups were also significantly reduced by  $27.75 \pm 5.03\%$ ,  $32.78 \pm 6.30\%$ , and  $32.63 \pm 11.90\%$  ( $P < 0.05$ ), respectively, as compared to the blank group, but no significant difference was found in comparison to the siHAb18G/CD147-transfected cells alone. Similar results were obtained in 7721 cells (data not shown). The results of the invasion assay and gelatin zymography suggested that there were no additive effects between HAb18G/CD147 gene silencing and  $\alpha 6\beta 1$  antibodies.

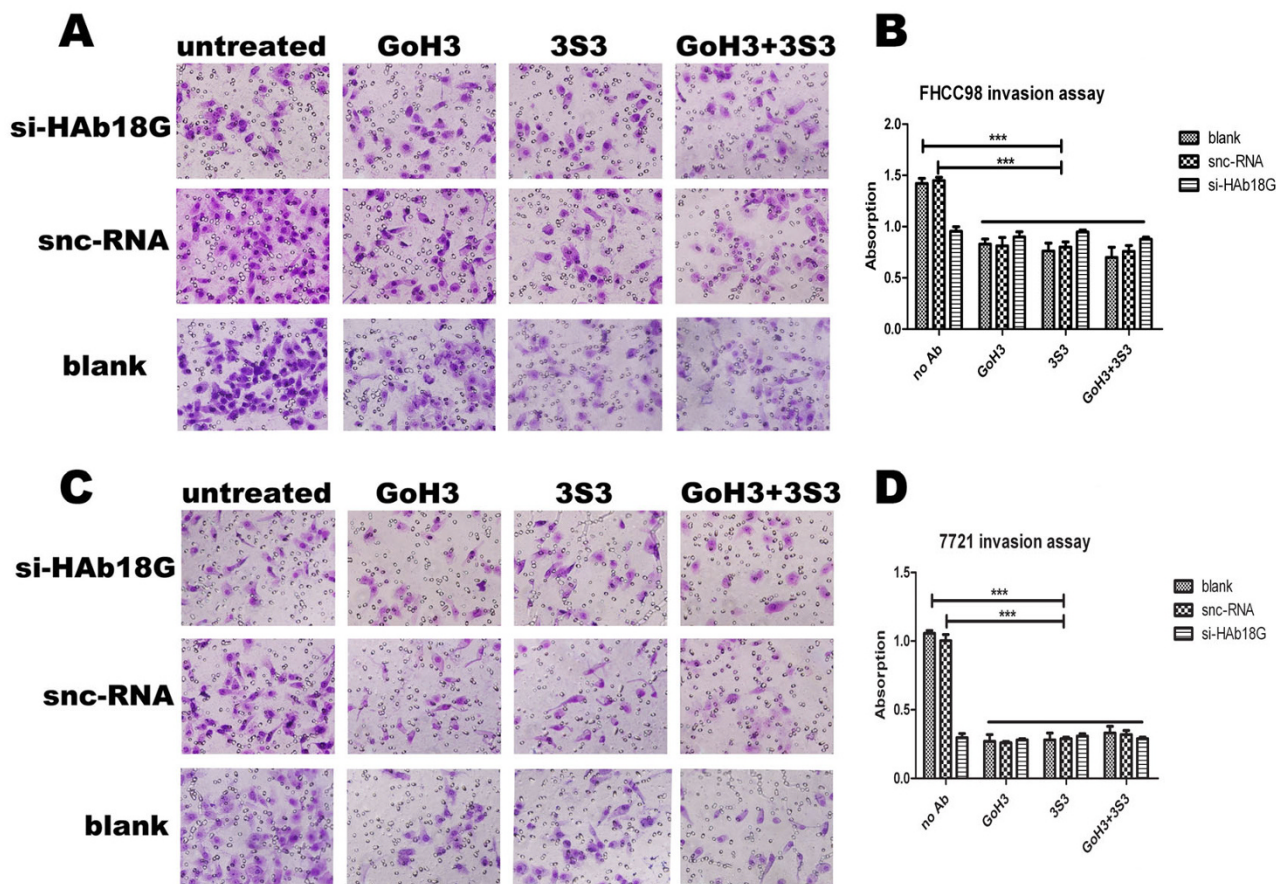
#### **PI3K is involved in HAb18G/CD147-elevated invasion of human hepatoma cells**

We further tested the role of PI3K on HAb18G/CD147-elevated invasion potential in order to identify the downstream signal molecule of the HAb18G/CD147-induced integrin-involved pathway. Wortmannin, an irreversible inhibitor of PI3K, was introduced into the invasion and zymography assays. As shown in Fig. 6, exposure to Wortmannin for 40 min inhibited invasion and MMP secretion. In FHCC98 cells, when treated with anti- $\alpha 6$  mAb, Wortmannin, and associated anti- $\alpha 6$  mAb, the number of

invasive cells were reduced by  $32.69 \pm 3.06\%$ ,  $39.22 \pm 2.31\%$ , and  $41.52 \pm 2.33\%$ , respectively, as compared to the blank control group ( $P < 0.05$ ) (Fig. 6A and 6B). In 7721 cells, the invasive cell numbers were correspondingly reduced by  $27.19 \pm 2.08\%$ ,  $32.98 \pm 4.73\%$ , and  $24.63 \pm 1.69\%$  ( $P < 0.05$ ) (Fig. 6A and 6C). There were no significant differences among anti- $\alpha 6$  mAb, Wortmannin, and Wortmannin-associated anti- $\alpha 6$  mAb.

The results of gelatin zymography also showed that MMP secretion was significantly reduced in FHCC98 and 7721 cells after treatment with Wortmannin and anti- $\alpha 6$  mAb. The density of MMPs in the anti- $\alpha 6$  mAb, Wortmannin, and Wortmannin-associated anti- $\alpha 6$  mAb was reduced by  $18.82 \pm 7.27\%$ ,  $19.26 \pm 5.21\%$ , and  $16.85 \pm 4.13\%$ , respectively, as compared to the blank control group in FHCC98 cells ( $P < 0.05$ ) (Fig. 6D and 6E). In 7721 cells, these same groups correspondingly manifested reduced MMP density by  $22.82 \pm 12.32\%$ ,  $18.18 \pm 4.97\%$ , and  $20.03 \pm 3.74\%$  ( $P < 0.05$ ) (Fig. 6D and 6F). There were no significant differences among groups treated with anti- $\alpha 6$  mAb, Wortmannin, or anti- $\alpha 6$  mAb associated with Wortmannin ( $P > 0.05$ ). To identify whether Akt phosphorylation is involved in the HAb18G/CD147-mediated and integrin-activated invasion processes of human hepatoma cells, the expression levels of Akt and P-Akt were tested by Western blot. The expression levels of P-Akt decreased  $57.62 \pm 3.61\%$  and  $68.06 \pm 4.43\%$ , respectively, in siCD147-transfected FHCC98 cells and siCD147-transfected 7721 cells when compared to expression levels in sncRNA-transfected cells ( $P < 0.01$ , Fig. 7). All these results suggest that PI3K, a key downstream signal molecule of integrin  $\alpha 6\beta 1$ , is involved in HAb18G/CD147-induced invasion and metastatic processes of human hepatoma cells.





**Figure 4**  
**Invasion of hepatoma cells with or without integrin  $\alpha6\beta1$  mAbs and siHAB18G/CD147 treatment.** (A-D) Matrigel invasion assay of FHCC98 (A, B) and 7721 (C, D) cells. Bars represent the mean of triplicate samples; error bars represent standard deviation. Data are representative of three independent experiments. \*\*\* $P < 0.01$  versus corresponding cells with no antibody treatment.

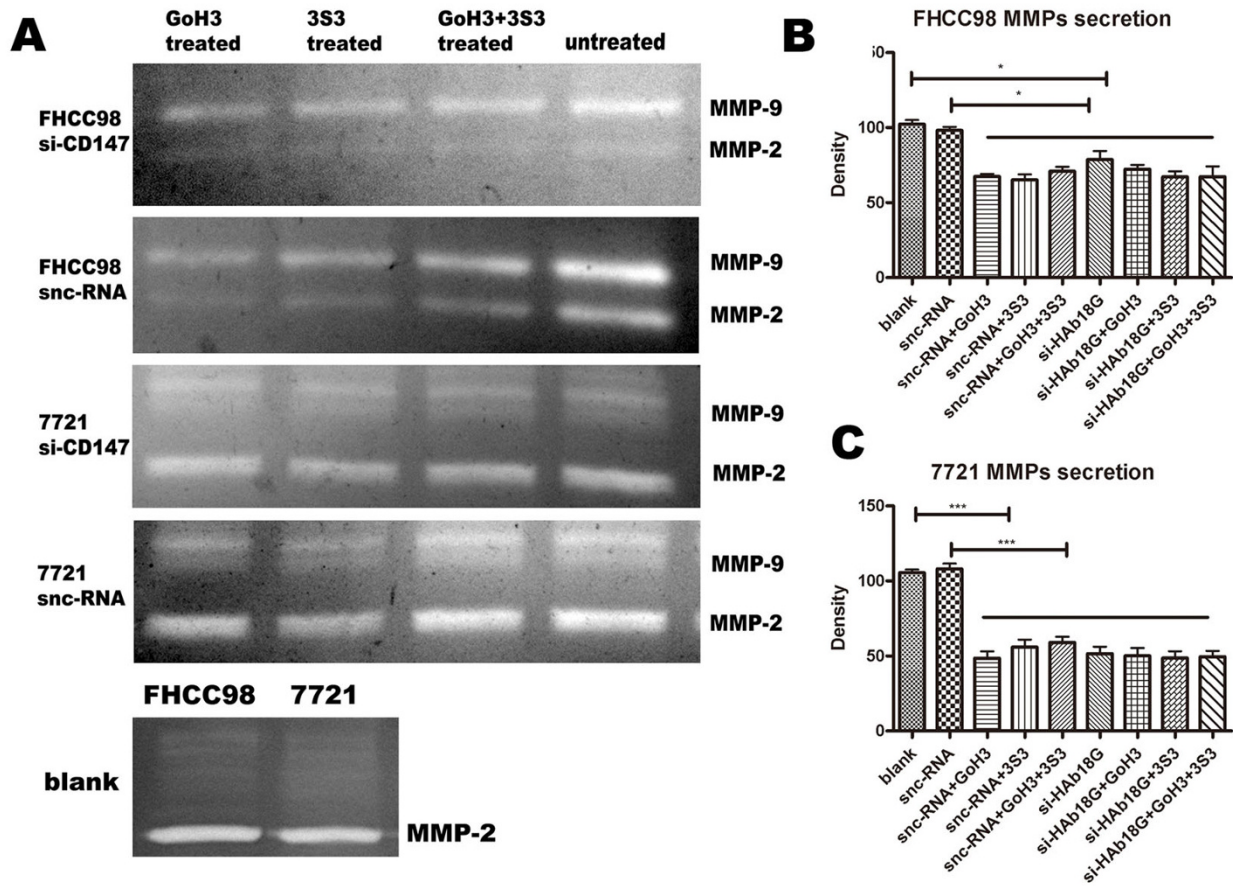
**Discussion**

The invasion process is a complicated and fatal cascade process in the human hepatoma, but the underlying molecular events remain largely unknown. Our previous studies implicated a hepatoma-associated antigen, HAB18G/CD147, in metastatic processes [28-30]. However, ligands or receptors for HAB18G/CD147 remain obscure, and whether HAB18G/CD147 directly interacts with extra- or intracellular molecules to execute its function is still unknown. We report here that HAB18G/CD147, by interacting with  $\alpha6\beta1$  integrin, enhances the metastatic potential of hepatoma cells.

In this study, we identified previously uncharacterized roles for HAB18G/CD147. The expression of integrin  $\alpha6\beta1$ , a receptor of laminin, was positively related to the

expression of HAB18G/CD147 as indicated the immunofluorescent double-staining and co-immunoprecipitation assay. When the specific antibodies for  $\alpha6$  and  $\beta1$  were added to the culture system, effective blocking of the interaction of HAB18G/CD147 and integrin  $\alpha6\beta1$  reduced cell invasion and MMP secretion. In siHAB18G-transfected cells, the addition of specific  $\alpha6$  and  $\beta1$  antibodies provides no significant additive inhibitory effect. These results suggest that the enhancing effect of HAB18G/CD147 on cell invasion and metastatic potential is mediated through  $\alpha6\beta1$  integrin.

Integrins serve as the major receptors mediating cell-matrix adhesion, which plays an important role in the invasive process of tumor cells. Therefore, it is not surprising that their interaction with laminin, the major compo-

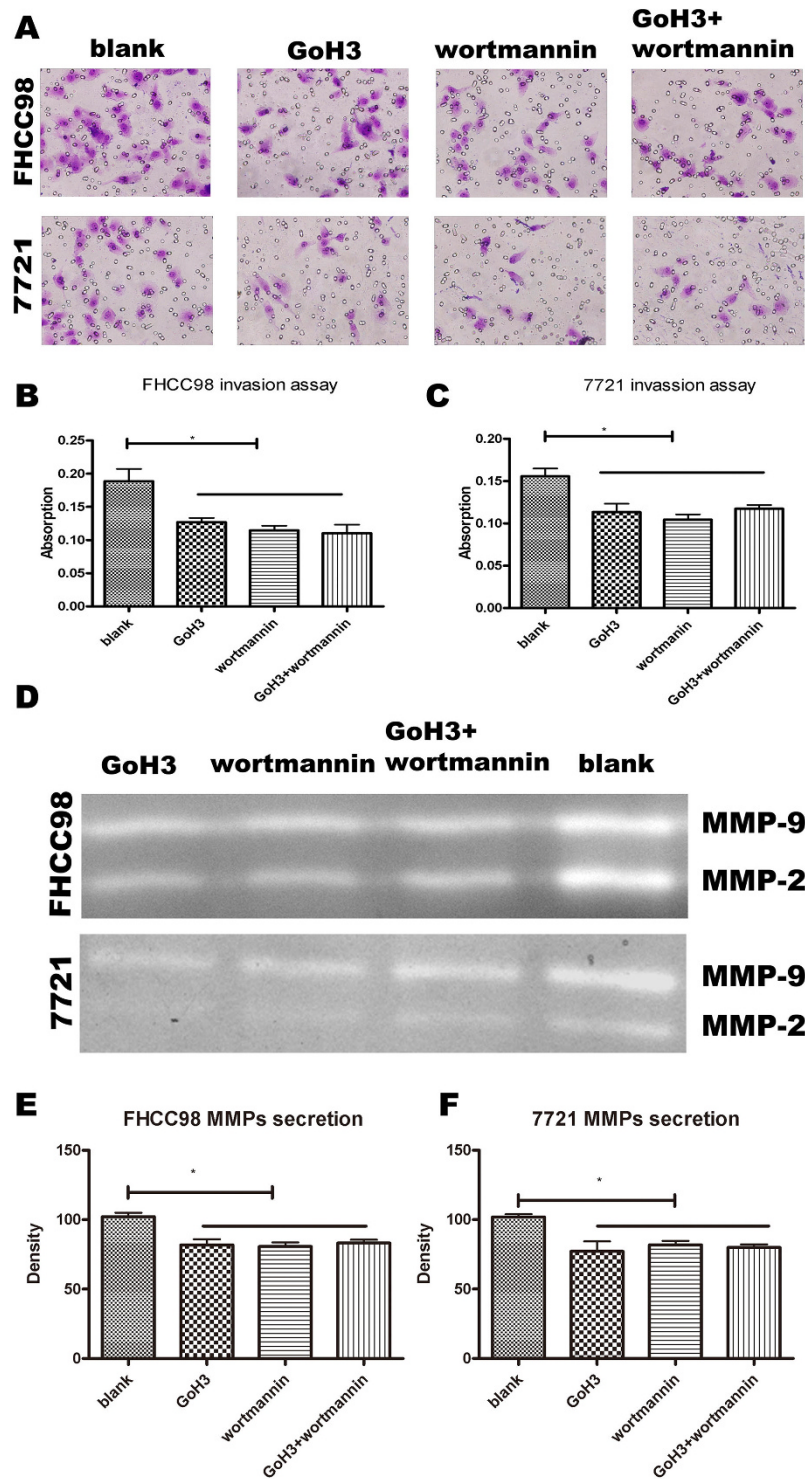


**Figure 5**  
**MMP secretion of hepatoma cells with or without integrin  $\alpha6\beta1$  mAbs and siHAb18G/CD147 treatment.** MMP levels of FHCC98 (A, B) and 7721 (A, C) cells. Bars represent the mean of triplicate samples; error bars represent standard deviation. Data are representative of three independent experiments. \*\*\* $P < 0.01$ , \*  $P < 0.05$  versus corresponding cells with no antibody treatment.

ment of the basement membrane, serves as a key event in the tumor invasion and metastatic process [31]. Through the interaction with integrins, CD147 may regulate the integrin-laminin association and then influence diverse processes such as basement membrane formation. The interaction of CD147 with integrin is conserved in *Drosophila* and is proposed to play a role in dorsal closure and extraembryonic membrane apposition [32] as well as in the maintenance of cellular architecture through cytoskeletal rearrangement [18]. Within cultured insect cells, the CD147-integrin interaction is essential for lamellipodia formation. Within retinal cells, disruption of the CD147-integrin interaction results in aberrant organelle distribution, including mitochondria, nuclei, and rough endoplasmic reticulum [18]. The elevated expression levels of both CD147 and integrin  $\alpha6\beta1$  have been observed in most metastatic and primary cancers [33,34]. Compar-

ison of normal prostate cells to cancerous cells showed a preferential pairing of  $\alpha6$  with  $\beta4$  transitioning to  $\alpha6$  with  $\beta1$  in cancer cells [35]. The significance of this transition, while still speculative, is most likely related to alterations in downstream signaling events. But there are no reports about the signal mechanism of the CD147-integrin/ $\alpha6\beta1$  interaction.

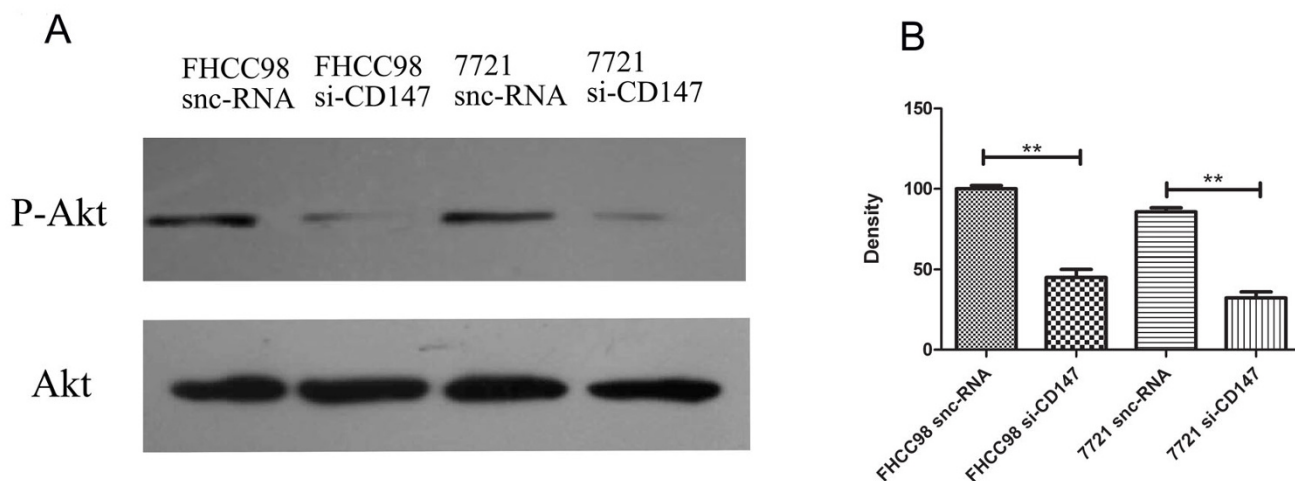
The signaling pathways of the integrins consist of many cytoskeleton proteins and enzymes, of which focal adhesion kinase (FAK), paxillin, and PI3K are crucial components. We previously discovered that FAK, paxillin, and their phosphorylation levels closely correlate with HAb18G/CD147 expression in human hepatoma cells [30]. In the present study, a specific inhibitor of PI3K, a key protein kinase downstream of integrin  $\alpha6\beta1$ , significantly blocked HAb18G/CD147-induced invasion and



**Figure 6**

**Effects of a PI3K inhibitor on invasion and MMP secretion of FHCC98 and 7721 cells.** (A-C) Matrigel invasion assay of FHCC98 (A, B) and 7721 (A, C) cells. (D-F) MMP levels of FHCC98 (D, E) and 7721 (D, F) cells. Bars represent the mean of triplicate samples; error bars represent standard deviation. Data are representative of three independent experiments. \*  $P < 0.05$  versus corresponding untreated cells.



**Figure 7**

**Akt phosphorylation in FHCC98 and 7721 cells.** Forty-eight hours after siCD147 or sncRNA transfection of FHCC98 and 7721 cells, phospho-Akt and total-Akt expression levels were examined by Western blot. Bars represent the mean of triplicate samples; error bars represent standard deviation. Data are representative of three independent experiments. \*\* $P < 0.01$  versus corresponding controls.

MMP release. Our previous data have already demonstrated that elevated HAB18G/CD147 expression leads to attenuation of the store-operated  $Ca^{2+}$  entry response to NO/cGMP and enhanced metastatic potential [26], but the precise mechanism is still unknown. As a strong inducer for intracellular  $Ca^{2+}$  store release, IP<sub>3</sub> is stimulated by PI3K and activates the  $Ca^{2+}$  channels, allowing greater  $Ca^{2+}$  influx into the cells. We may speculate that HAB18G/CD147 enhances the invasion and metastatic potential of human hepatoma cells via integrin  $\alpha 6\beta 1$ -PI3K- $Ca^{2+}$  signaling pathways.

### Conclusion

In the present study, we have identified the interaction of HAB18G/CD147 with integrin  $\alpha 6\beta 1$  in human hepatoma cells. We demonstrated that HAB18G/CD147 promotes invasion potential of hepatoma cells by interacting with integrin  $\alpha 6\beta 1$  and further activating its downstream PI3K-Akt signaling pathway. These findings shed new light onto the mechanisms underlying HAB18G/CD147-induced invasion and human hepatoma cell metastatic processes. The CD147-integrin  $\alpha 6\beta 1$  interaction might be a novel potential target for tumor metastasis therapy.

### Competing interests

The authors declare that they have no competing interests.

### Authors' contributions

JYD, KFD performed the studies and drafted the manuscript. CHW participated in the statistical analysis and

helped to draft the manuscript. ZNC, JIJ participated in the design of the study. Wayne Bond Lau, LT participated in the writing assistance. JT, YMW, PZ provided purely technical help. All authors have read and approved the final manuscript.

### Acknowledgements

This work was supported by grants from the National Natural Science Foundation of China (30771119 and 30530720) and the National Basic Research Program of China (2009CB521704 and 2006CB708504). We would like to thank Dr. LT for reviewing the paper.

### References

1. Biswas C, Zhang Y, DeCastro R, Guo H, Nakamura T, Kataoka H, Nabeshima K: **The human tumor cell-derived collagenase stimulatory factor (renamed EMMPRIN) is a member of the immunoglobulin superfamily.** *Cancer Res* 1995, **55**(2):434-439.
2. Kasinrerck W, Fiebiger E, Stefanova I, Baumruker T, Knapp W, Stockinger H: **Human leukocyte activation antigen M6, a member of the Ig superfamily, is the species homologue of rat OX-47, mouse basigin, and chicken HT7 molecule.** *J Immunol* 1992, **149**(3):847-854.
3. Fossum S, Mallett S, Barclay AN: **The MRC OX-47 antigen is a member of the immunoglobulin superfamily with an unusual transmembrane sequence.** *Eur J Immunol* 1991, **21**(3):671-679.
4. Miyauchi T, Masuzawa Y, Muramatsu T: **The basigin group of the immunoglobulin superfamily: complete conservation of a segment in and around transmembrane domains of human and mouse basigin and chicken HT7 antigen.** *J Biochem* 1991, **110**(5):770-774.
5. Chen Z, N YZ, Mi L, Jiang JL, Guo XN: **Structure and function analysis of hepatoma associated factor HAB18G.** *J Cell Mol Immunol* 1999:34-39.
6. Seulberger H, Unger CM, Risau W: **HT7, Neurothelin, Basigin, gp42 and OX-47--many names for one developmentally regulated immuno-globulin-like surface glycoprotein on blood-brain barrier endothelium, epithelial tissue barriers and neurons.** *Neurosci Lett* 1992, **140**(1):93-97.

7. Fadool JM, Linser PJ: **5A1 I antigen is a cell recognition molecule which is involved in neuronal-glia interactions in avian neural retina.** *Dev Dyn* 1993, **196(4)**:252-262.
8. Schlosshauer B, Bauch H, Frank R: **Neurothelin: amino acid sequence, cell surface dynamics and actin colocalization.** *Eur J Cell Biol* 1995, **68(2)**:159-166.
9. Nehme CL, Fayos BE, Bartles JR: **Distribution of the integral plasma membrane glycoprotein CE9 (MRC OX-47) among rat tissues and its induction by diverse stimuli of metabolic activation.** *Biochem J* 1995, **310(Pt 2)**:693-698.
10. Altruda F, Cervella P, Gaeta ML, Daniele A, Giancotti F, Tarone G, Stefanuto G, Silengo L: **Cloning of cDNA for a novel mouse membrane glycoprotein (gp42): shared identity to histocompatibility antigens, immunoglobulins and neural-cell adhesion molecules.** *Gene* 1989, **85(2)**:445-451.
11. Igakura T, Kadomatsu K, Kaname T, Muramatsu H, Fan QW, Miyauchi T, Toyama Y, Kuno N, Yuasa S, Takahashi M, et al.: **A null mutation in basigin, an immunoglobulin superfamily member, indicates its important roles in peri-implantation development and spermatogenesis.** *Dev Biol* 1998, **194(2)**:152-165.
12. Saxena DK, Oh-Oka T, Kadomatsu K, Muramatsu T, Toshimori K: **Behaviour of a sperm surface transmembrane glycoprotein basigin during epididymal maturation and its role in fertilization in mice.** *Reproduction* 2002, **123(3)**:435-444.
13. Schlosshauer B: **Neurothelin: molecular characteristics and developmental regulation in the chick CNS.** *Development* 1991, **113(1)**:129-140.
14. Fadool JM, Linser PJ: **Differential glycosylation of the 5A1 I/HT7 antigen by neural retina and epithelial tissues in the chicken.** *J Neurochem* 1993, **60(4)**:1354-1364.
15. Pushkarsky T, Zybarth G, Dubrovsky L, Yurchenko V, Tang H, Guo H, Toole B, Sherry B, Bukrinsky M: **CDI47 facilitates HIV-1 infection by interacting with virus-associated cyclophilin A.** *Proc Natl Acad Sci USA* 2001, **98(11)**:6360-6365.
16. Zhu P, Ding J, Zhou J, Dong WJ, Fan CM, Chen ZN: **Expression of CDI47 on monocytes/macrophages in rheumatoid arthritis: its potential role in monocyte accumulation and matrix metalloproteinase production.** *Arthritis Res Ther* 2005, **7(5)**:R1023-1033.
17. Berditchevski F, Chang S, Bodorova J, Hemler ME: **Generation of monoclonal antibodies to integrin-associated proteins. Evidence that alpha3beta1 complexes with EMMPRIN/basigin/OX47/M6.** *J Biol Chem* 1997, **272(46)**:29174-29180.
18. Curtin KD, Meinertzhagen IA, Wyman RJ: **Basigin (EMMPRIN/CDI47) interacts with integrin to affect cellular architecture.** *J Cell Sci* 2005, **118(Pt 12)**:2649-2660.
19. Nejari M, Hafdi Z, Dumortier J, Bringuier AF, Feldmann G, Scoazec JY: **alpha6beta1 integrin expression in hepatocarcinoma cells: regulation and role in cell adhesion and migration.** *Int J Cancer* 1999, **83(4)**:518-525.
20. Torimura T, Ueno T, Kin M, Inuzuka S, Sugawara H, Tamaki S, Tsuji R, Sujaku K, Sata M, Tanikawa K: **Coordinated expression of integrin alpha6beta1 and laminin in hepatocellular carcinoma.** *Hum Pathol* 1997, **28(10)**:1131-1138.
21. Torimura T, Ueno T, Kin M, Ogata R, Inuzuka S, Sugawara H, Kurotatsu R, Shimada M, Yano H, Kojiro M, et al.: **Integrin alpha6beta1 plays a significant role in the attachment of hepatoma cells to laminin.** *Journal of hepatology* 1999, **31(4)**:734-740.
22. Carloni V, Romanelli RG, Mercurio AM, Pinzani M, Laffi G, Cotrozzi G, Gentilini P: **Knockout of alpha6 beta1-integrin expression reverses the transformed phenotype of hepatocarcinoma cells.** *Gastroenterology* 1998, **115(2)**:433-442.
23. Carloni V, Mazzocca A, Pantaleo P, Cordella C, Laffi G, Gentilini P: **The integrin, alpha6beta1, is necessary for the matrix-dependent activation of FAK and MAP kinase and the migration of human hepatocarcinoma cells.** *Hepatology* 2001, **34(1)**:42-49.
24. Chen ZN, Xing JL, Bian HJ, Mi L, Jiang JL: **Application of cell engineering technology to the tumour immunotherapeutic drug: a review.** *Cell biology international* 2001, **25(10)**:1013-1015.
25. Jiang JL, Zhou Q, Yu MK, Ho LS, Chen ZN, Chan HC: **The involvement of HAb18G/CDI47 in regulation of store-operated calcium entry and metastasis of human hepatoma cells.** *J Biol Chem* 2001, **276(50)**:46870-46877.
26. Jiang JL, Chan HC, Zhou Q, Yu MK, Yao XY, Lam SY, Zhu H, Ho LS, Leung KM, Chen ZN: **HAB18G/CDI47-mediated calcium mobilization and hepatoma metastasis require both C-terminal and N-terminal domains.** *Cell Mol Life Sci* 2004, **61(16)**:2083-2091.
27. Wang XH, Xu J, Zhang Y, Li L, Feng Q, Mi L, Chen ZN: **Inducible expression of Bcl-XL inhibits sodium butyrate-induced apoptosis in hybridoma, resulting in enhanced antibody production.** *Cell biology international* 2004, **28(3)**:185-191.
28. Xu J, Xu HY, Zhang Q, Song F, Jiang JL, Yang XM, Mi L, Wen N, Tian R, Wang L, et al.: **HAB18G/CDI47 functions in invasion and metastasis of hepatocellular carcinoma.** *Mol Cancer Res* 2007, **5(6)**:605-614.
29. Yu XL, Hu T, Du JM, Ding JP, Yang XM, Zhang J, Yang B, Shen X, Zhang Z, Zhong WD, et al.: **Crystal structure of HAb18G/CDI47: implications for immunoglobulin superfamily homophilic adhesion.** *J Biol Chem* 2008, **283(26)**:18056-18065.
30. Tang J, Wu YM, Zhao P, Yang XM, Jiang JL, Chen ZN: **Overexpression of HAb18G/CDI47 promotes invasion and metastasis via alpha3beta1 integrin mediated FAK-paxillin and FAK-PI3K-Ca(2+) pathways.** *Cell Mol Life Sci* 2008, **65(18)**:2933-2942.
31. Tian B, Li Y, Ji XN, Chen J, Xue Q, Ye SL, Liu YK, Tang ZY: **Basement membrane proteins play an active role in the invasive process of human hepatocellular carcinoma cells with high metastasis potential.** *J Cancer Res Clin Oncol* 2005, **131(2)**:80-86.
32. Reed BH, Wilk R, Schock F, Lipshitz HD: **Integrin-dependent apposition of Drosophila extraembryonic membranes promotes morphogenesis and prevents anoikis.** *Curr Biol* 2004, **14(5)**:372-380.
33. Madigan MC, Kingsley EA, Cozzi PJ, Delprado WJ, Russell PJ, Li Y: **The role of extracellular matrix metalloproteinase inducer protein in prostate cancer progression.** *Cancer Immunol Immunother* 2008, **57(9)**:1367-1379.
34. Demetriou MC, Cress AE: **Integrin clipping: a novel adhesion switch?** *J Cell Biochem* 2004, **91(1)**:26-35.
35. Jewell K, Kapron-Bras C, Jeevaratnam P, Dedhar S: **Stimulation of tyrosine phosphorylation of distinct proteins in response to antibody-mediated ligation and clustering of alpha 3 and alpha 6 integrins.** *J Cell Sci* 1995, **108(Pt 3)**:1165-1174.

### Pre-publication history

The pre-publication history for this paper can be accessed here:

<http://www.biomedcentral.com/1471-2407/9/337/prepub>

Publish with **BioMed Central** and every scientist can read your work free of charge

"BioMed Central will be the most significant development for disseminating the results of biomedical research in our lifetime."

Sir Paul Nurse, Cancer Research UK

Your research papers will be:

- available free of charge to the entire biomedical community
- peer reviewed and published immediately upon acceptance
- cited in PubMed and archived on PubMed Central
- yours — you keep the copyright

Submit your manuscript here:  
[http://www.biomedcentral.com/info/publishing\\_adv.asp](http://www.biomedcentral.com/info/publishing_adv.asp)

