

RESEARCH ARTICLE

Open Access

# *In vitro* and *in vivo* anti-tumor effect of metformin as a novel therapeutic agent in human oral squamous cell carcinoma

Qingqiong Luo<sup>1†</sup>, Dan Hu<sup>1†</sup>, Shuiqing Hu<sup>1</sup>, Ming Yan<sup>2</sup>, Zujun Sun<sup>1</sup> and Fuxiang Chen<sup>1\*</sup>

## Abstract

**Background:** Metformin, which is widely used as an antidiabetic agent, has recently been reported to reduce cancer risk and improve prognosis in certain malignancies. However, the specific mechanisms underlying the effect of metformin on the development and progression of several cancers including oral squamous cell carcinoma (OSCC) remain unclear. In the present study, we investigated the effects of metformin on OSCC cells *in vitro* and *in vivo*.

**Methods:** OSCC cells treated with or without metformin were counted using a hemocytometer. The clonogenic ability of OSCC cells after metformin treatment was determined by colony formation assay. Cell cycle progression and apoptosis were assessed by flow cytometry, and the activation of related signaling pathways was examined by immunoblotting. The *in vivo* anti-tumor effect of metformin was examined using a xenograft mouse model. Immunohistochemistry and TUNEL staining were used to determine the expression of cyclin D1 and the presence of apoptotic cells in tumors from mice treated with or without metformin.

**Results:** Metformin inhibited proliferation in the OSCC cell lines CAL27, WSU-HN6 and SCC25 in a time- and dose-dependent manner, and significantly reduced the colony formation of OSCC cells *in vitro*. Metformin induced an apparent cell cycle arrest at the G0/G1 phase, which was accompanied by an obvious activation of the AMP kinase pathway and a strongly decreased activation of mammalian target of rapamycin and S6 kinase. Metformin treatment led to a remarkable decrease of cyclin D1, cyclin-dependent kinase (CDK) 4 and CDK6 protein levels and phosphorylation of retinoblastoma protein, but did not affect p21 or p27 protein expression in OSCC cells. In addition, metformin induced apoptosis in OSCC cells, significantly down-regulating the anti-apoptotic proteins Bcl-2 and Bcl-xL and up-regulating the pro-apoptotic protein Bax. Metformin also markedly reduced the expression of cyclin D1 and increased the numbers of apoptotic cells *in vivo*, thus inhibiting the growth of OSCC xenografts.

**Conclusions:** Our data suggested that metformin could be a potential candidate for the development of new treatment strategies for human OSCC.

**Keywords:** Metformin, Oral squamous cell carcinomas, Cell cycle, Cyclin D1, Apoptosis

\* Correspondence: chenfx@sjtu.edu.cn

†Equal contributors

<sup>1</sup>Department of Clinical Laboratories, Ninth People's Hospital Affiliated to Shanghai Jiao Tong University School of Medicine, 639 Zhizaoju Road, Shanghai 200011, China

Full list of author information is available at the end of the article

## Background

Oral squamous cell carcinoma (OSCC), which is the most common cancer of the oral cavity, is one of the leading causes of cancer-related death [1,2]. Currently, therapeutic strategies for OSCC include surgery, radiation and chemotherapy. However, despite advances in multimodal treatments, the overall survival rate of OSCC has not been improved significantly in the last several decades [2]. In addition, functional or cosmetic deficiencies and severe complications are often associated with the disease even after the treatment. Therefore, the identification of novel and effective therapeutic agents to inhibit cancer cell growth in OSCC is essential.

Metformin (1, 1-dimethylbiguanide hydrochloride) is an antihyperglycemic drug commonly used in the treatment of type 2 diabetes. Its anti-diabetic effect is mediated by the activation of AMP-activated protein kinase (AMPK), which inhibits hepatic gluconeogenesis and enhances glucose uptake in skeletal muscle [3]. In addition to its anti-diabetic properties, numerous studies have shown that metformin possesses anticancer activity, which has attracted increasing attention. In basic investigations, metformin inhibited cell proliferation in several human malignancies including gastric cancer [4], pancreatic cancer [5], medullary thyroid cancer [6], breast cancer [7] and endometrial carcinoma [8]. Metformin also suppressed tumor growth in xenograft mouse models of melanoma [9], ovarian cancer [10], prostate cancer [11] and breast cancer [12]. Furthermore, in a cancer animal model, metformin prevented tobacco carcinogen-induced lung tumorigenesis [13] and decreased the incidence and size of mammary adenocarcinomas in Her2/c-Neu transgenic mice [14]. Results from epidemiologic surveys confirm that metformin has significant effects on tumorigenesis. The use of metformin in diabetic patients was associated with significantly lower risks of cancer incidence and mortality [15]. Colorectal cancer patients with diabetes treated with metformin as part of their diabetic therapy appeared to have a superior overall survival rate [16]. However, the mechanisms underlying the suppression of cancer growth by metformin are complex, and remain relatively unknown.

Here, we demonstrated that metformin inhibited the growth of OSCC cells by blocking cell cycle progression at the G0/G1 phase and inducing apoptosis. Furthermore, metformin treatment was associated with the activation of the AMP kinase pathway and the suppression of mammalian target of rapamycin (mTOR) and S6 kinase (S6K) activation. Metformin treatment also led to a significant decrease of cyclin D1 protein level and retinoblastoma protein (pRb) phosphorylation. Cyclin-dependent kinase (CDK) 4 and CDK6 were also decreased by metformin. Moreover, a significant down-regulation of the anti-apoptotic proteins Bcl-2 and Bcl-xL and up-

regulation of the pro-apoptotic protein Bax were observed in OSCC cells following metformin treatment. A colony formation assay revealed that metformin reduced the clonogenic ability of OSCC cells *in vitro*. More importantly, metformin markedly decreased the expression of cyclin D1 and increased the number of apoptotic cells in a xenograft model, showing the suppression of OSCC tumor growth *in vivo*.

## Methods

### Animals

BALB/c nude mice (male, 4 weeks of age) were purchased from Shanghai Laboratory Animal Center (Shanghai, China) and maintained in the animal care facilities of the Ninth People's Hospital, Shanghai Jiao Tong University School of Medicine under pathogen-free conditions. Animal welfare and experimental procedures were carried out strictly in accordance with the Guide for the Care and Use of Laboratory Animals (The Ministry of Science and Technology of China, 2006) and the related ethical regulations of the hospital. All efforts were made to minimize animal suffering and to reduce the number of animals used. All experimental procedures received approval by the Laboratory Animal Care and Use Committees of the hospital.

### Cell lines and reagents

Three human OSCC cell lines (CAL27, WSU-HN6 and SCC25) were included in this study. CAL27 and SCC25 were from the American Type Culture Collection (ATCC), and WSU-HN6 was from the National Institutes of Health (NIH). All OSCC cells were provided by the Shanghai Key Laboratory of Stomatology, the Ninth's Hospital, Shanghai Jiao Tong University School of Medicine. Metformin (1,1-dimethylbiguanide hydrochloride) was purchased from Sigma Chemical (St. Louis, MI, USA). Antibodies used for western blot analyses were from the following sources: antibodies against AMPK $\alpha$ , phospho-AMPK $\alpha$  (Thr172) (p-AMPK $\alpha$ ), p21 and p27 were obtained from Cell Signaling Technology (Denver, MA, USA); antibodies against Bax, Bcl-2 and Bcl-xL were obtained from BD Pharmingen (San Diego, CA, USA); anti-phospho-mTOR (Ser2448) (p-mTOR), phospho-pRb (Thr821) (p-pRb), cyclin D1, CDK4, CDK6 and phospho-S6K (p-S6K) antibodies were from Eptitomics (Burlingame, CA, USA). Anti- $\beta$ -actin (clone AC-40) was purchased from Sigma. IRDye 800CW goat anti-mouse secondary antibody and goat anti-rabbit secondary antibody were obtained from LI-COR Biotechnology (Lincoln, NE, USA). PI/Rase staining buffer and the FITC Annexin V apoptosis detection kit were purchased from BD Pharmingen.

### Cell culture

CAL27 and WSU-HN6 were cultured in Dulbecco's modified Eagle medium (DMEM) (Invitrogen, Carlsbad, CA, USA) supplemented with penicillin (100 units/ml), streptomycin (100 µg/ml) and 10% (v/v) heat-inactivated fetal bovine serum (FBS) (Invitrogen). SCC25 was cultured in F12/DMEM (Invitrogen) supplemented with the same concentrations of FBS and penicillin and streptomycin. Cells were incubated at 37°C in a humidified atmosphere containing 5% CO<sub>2</sub>.

### Cell proliferation assay

Human OSCC cells ( $5 \times 10^4$  cells/well) were plated into 12-well plates. After 24 hours (h), cells were treated with metformin at the indicated concentrations or the same volume of culture medium. After incubation with metformin for 24, 48 or 72 h, cells were extensively rinsed in Dulbecco's phosphate buffered saline (PBS) to remove any loosely attached or floating cells. The cells were then harvested by trypsinization and the cell number was determined using a hemocytometer.

### Cell clonogenic assay

Cells were seeded into 6-well plates in triplicates at a density of 1000 cells/well in 2 ml of medium containing 10% FBS. After 24 h, cultures were replaced with fresh culture medium containing the indicated concentrations of metformin in a 37°C humidified atmosphere with 95% air and 5% CO<sub>2</sub>, and grown for 3 weeks. The culture medium was changed once every 3 days. The cell clones were stained for 15 min with a solution containing 0.5% crystal violet and 25% methanol, followed by three rinses with tap water to remove excess dye. Colonies consisting of >50 cells were counted under a microscopy.

### Cell cycle and apoptosis analysis

Tumor cells ( $2 \times 10^5$  cells/well) were seeded in 6-well plates. After 24 h, the medium was removed and replaced by fresh culture medium containing 0 mmol/L (mM) or 20 mM metformin for different time. The cell cycle was analyzed by measuring the amount of propidium iodide (PI)-labeled DNA in ethanol-fixed cells. In brief, cells were treated for 24 h, harvested by trypsinization and fixed with cold 70% ethanol. Cells were then stained for total DNA content with PI/Rase staining buffer according to the manufacturer's instructions. Cell cycle distribution was analyzed using a flow cytometer (Becton Dickinson, San Jose, CA, USA) and ModFit software. Apoptotic and necrotic cell death were analyzed by double staining with FITC-conjugated Annexin V and PI, which is based on the binding of Annexin V to apoptotic cells with exposed phosphatidylserine and PI labeling of late apoptotic/necrotic cells with membrane damage. Tumor cells were treated for 24 and 48 h.

Staining was performed according to the manufacturer's instructions. Apoptosis was analyzed by flow cytometry, and data were processed with the FlowJo software.

### Western blot analysis

Tumor cells were seeded in a 6-well plate at a density of  $5 \times 10^5$  cells per well. After 24 h, the medium was replaced with fresh culture medium containing 0 mM or 20 mM metformin for different times. Cells were collected and lysed in RIPA buffer (150 mM NaCl, 10 mM Tris-HCl, pH 8.0, 1% Nonidet P-40 (NP-40), 0.5% deoxycholic acid, 0.1% SDS, 5 mM EDTA) containing 0.7% phenylmethylsulfonyl fluoride (PMSF), 0.2% aprotinin, 0.2% leupeptin, and sodium metavanadate. Samples (50 µg protein) were incubated at 100°C for 5 min, separated on 10% (w/v) SDS-PAGE gels, and electrophoretically transferred to a PVDF membrane (Bio-Rad, Hercules, CA, USA). Nonspecific sites were blocked with a solution containing 5% non-fat milk powder in TBS/Tween20 (TBS/T) for 2 h at room temperature. The membrane was probed with antibodies against β-actin, AMPKα, pAMPKα, P21, P27, Bax, Bcl-2, Bcl-xL, pmTOR, pRb, cyclin D1, CDK4, CDK6 and pS6K in TBS/T containing 5% bovine serum albumin (BSA) overnight at 4°C, and then incubated with IRDye 800CW goat anti-mouse secondary antibody or goat anti-rabbit secondary antibody at a dilution of 1:10000. Antibody-antigen complexes were detected using the Odyssey<sup>®</sup> Infrared Imaging system (LI-COR Biosciences, Lincoln, NE, USA).

### In vivo anti-tumor activity

For xenograft implantation, a total of  $2 \times 10^6$  CAL27 cells/mouse were injected subcutaneously into the back next to the right hind limb, and permitted to grow until palpable. Then mice were randomly assigned into control and treated groups and treatment was initiated. The metformin treated group received oral administration of metformin in drinking water (200 µg/ml) for 15 days, whereas the control group received drinking water only. Tumors were measured every 3 days with vernier calipers and tumor volumes were calculated according to the following formula: tumor volume (mm<sup>3</sup>) =  $a \times b^2 \times 0.52$ , where  $a$  is the longest diameter and  $b$  is the shortest diameter. Body weight of the mice was also recorded. At the end of the experiments, tumor-bearing mice were sacrificed, and tumors were weighed after being separated from the surrounding muscles and dermis. Finally, the tumors were fixed with 4% phosphate-buffered paraformaldehyde and embedded in paraffin.

### TUNEL (terminal deoxynucleotidyl transferase (TdT)-mediated nick end labeling) staining

Paraffin-embedded tumor samples were assayed for DNA fragmentation using a TUNEL assay with the *In*

*Situ* Cell Death Detection Kit (Roche Molecular Biochemicals, Indianapolis, IN, USA). In brief, 5- $\mu$ m-thick paraffin sections of the tumor were deparaffinized in xylene and rehydrated in decreasing concentrations of ethanol. Sections were rinsed in distilled water and incubated in 3% hydrogen peroxide in methanol for 5 min to block endogenous peroxidase activity. Tissue sections were then incubated in 20  $\mu$ g/ml proteinase K (DAKO Corporation, Carpinteria, CA, USA) for 15 min, washed with PBS, incubated in equilibration buffer and then in TdT enzyme solution in a humidified chamber at 37°C for 60 min. The sections were subsequently rinsed in PBS, and then incubated with streptavidin-peroxidase conjugate for 30 min. Peroxidase activity was detected by application of DAB (Vector Laboratories, Burlingame, CA, USA). Apoptotic cells were identified by a dark brown nuclear stain observed under a light microscope. A total of 10 tissue sections were analyzed for each animal.

#### Immunohistochemical (IHC) staining

Cyclin D1 expression in xenograft tumor samples was determined by IHC staining. Briefly, 5- $\mu$ m thick paraffin-embedded tumor sections were deparaffinized in xylene and rehydrated in decreasing concentrations of ethanol. Sections were subjected to heat-induced antigen-retrieval in citric acid buffer (pH 7.0) for 20 min, blocked in 5% normal goat serum for 30 min, and incubated in 3% hydrogen peroxide to suppress endogenous peroxidase activity. Sections were then treated with an anti-cyclin D1 (Epitomics) antibody at a dilution of 1:150 at 4°C overnight, followed by peroxidase-conjugated goat anti-rabbit antibody for 1 h at room temperature. Finally, sections were developed in a substrate solution of DAB (Vector Laboratories) and counter-stained with hematoxylin. All sections were examined under light microscopy.

#### Statistical analysis

Each experiment or assay was performed at least three times, and representative examples are shown. Data were reported as means  $\pm$  SD. The statistical significance of the differences was analyzed by Student's *t*-test. The value of  $p < 0.05$  was considered significant.

## Results

### Metformin inhibits the proliferation of OSCC cells and reduces colony formation *in vitro*

To evaluate the growth inhibitory effect of metformin on human OSCC cells *in vitro*, three OSCC cell lines were included in our study: CAL27, WSU-HN6 and SCC25. Cells were seeded in 12-well plates and treated with or without 5, 10 and 20 mmol/L (mM) metformin for different time. Cell numbers were then determined by a hemocytometer. As shown in Figure 1A, metformin significantly inhibited proliferation in all three OSCC

cell lines in a time- and dose-dependent manner. The ability of these three cell lines to form colonies on 6-well cell culture plates in the presence or absence of metformin was examined for a period of 3 weeks. Metformin significantly reduced colony formation at concentrations as low as 5 mM (Figure 1B). The inhibitory effect of metformin on colony formation was also dose-dependent, as shown in Figure 1B. At the highest concentration of 20 mM metformin, colony formation was reduced over 90% as compared to the untreated controls (0 mM). Taken together, these results indicate that metformin inhibits the growth of OSCC cells.

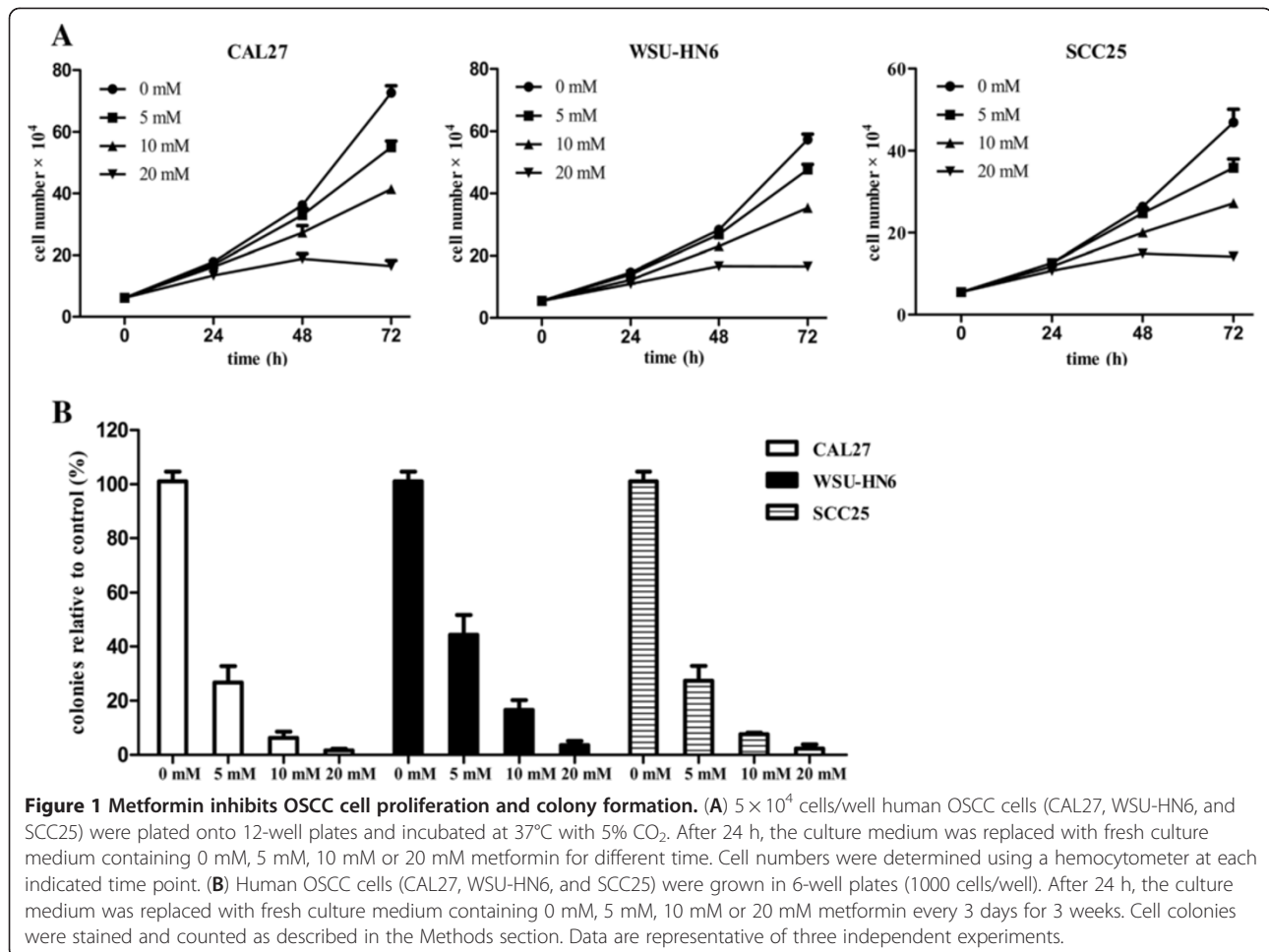
### Metformin induces OSCC cell cycle arrest

The possible effect of metformin on cell cycle progression in OSCC cells was examined by flow cytometry. Treatment of proliferating CAL27, WSU-HN6 and SCC25 cells with 20 mM metformin for 24 h caused delayed entry into S phase and induced G0/G1 arrest. Metformin treatment increased the proportion of cells in the G0/G1 phase in all three OSCC cell lines compared to control cells (69.7% vs. 50.86% in CAL27, 77.96% vs. 56.54% in WSU-HN6, and 64.03% vs. 43.51% in SCC25) (Figure 2A). The proportion of OSCC cells in the S phase decreased accordingly, whereas there was no significant change in the number of cells in the G2/M phase.

The expression of various cell-cycle-related molecules in OSCC cells treated with or without 20 mM metformin for 24 h was then examined by western blot. The most remarkable change was the loss of cyclin D1, a key protein implicated in the transition from the G0/G1 to the S phase (Figure 2B). Increased levels of p-AMPK $\alpha$  in metformin-treated cells indicated the activation of the AMPK pathway. The protein levels of p-mTOR, p-S6K and p-pRb also decreased dramatically in response to metformin treatment (Figure 2B). Analysis of the expression of other cell-cycle-related proteins involved in the G0/G1 transition revealed an obvious decrease of CDK4 and CDK6 levels in OSCC cells treated with metformin. However, no significant changes were detected in the expressions of p21 and p27. These results clearly demonstrate that metformin affects the expression and the phosphorylation of key cell cycle regulatory proteins leading to G0/G1 arrest in human OSCC cells.

### Metformin induces apoptosis of OSCC cells

To determine whether metformin induced apoptosis, OSCC cells were treated with or without 20 mM metformin for 24 h and 48 h and analyzed by flow cytometry. The results showed that metformin induced a dramatic increase in the proportion of apoptotic tumor cells 48 h after treatment in CAL27, WSU-HN6 and SCC25 cells (25.4%, 24.4% and 43.7%, respectively), with 11.4%, 8.4% and 15.5% of apoptotic cells at 24 h after treatment,

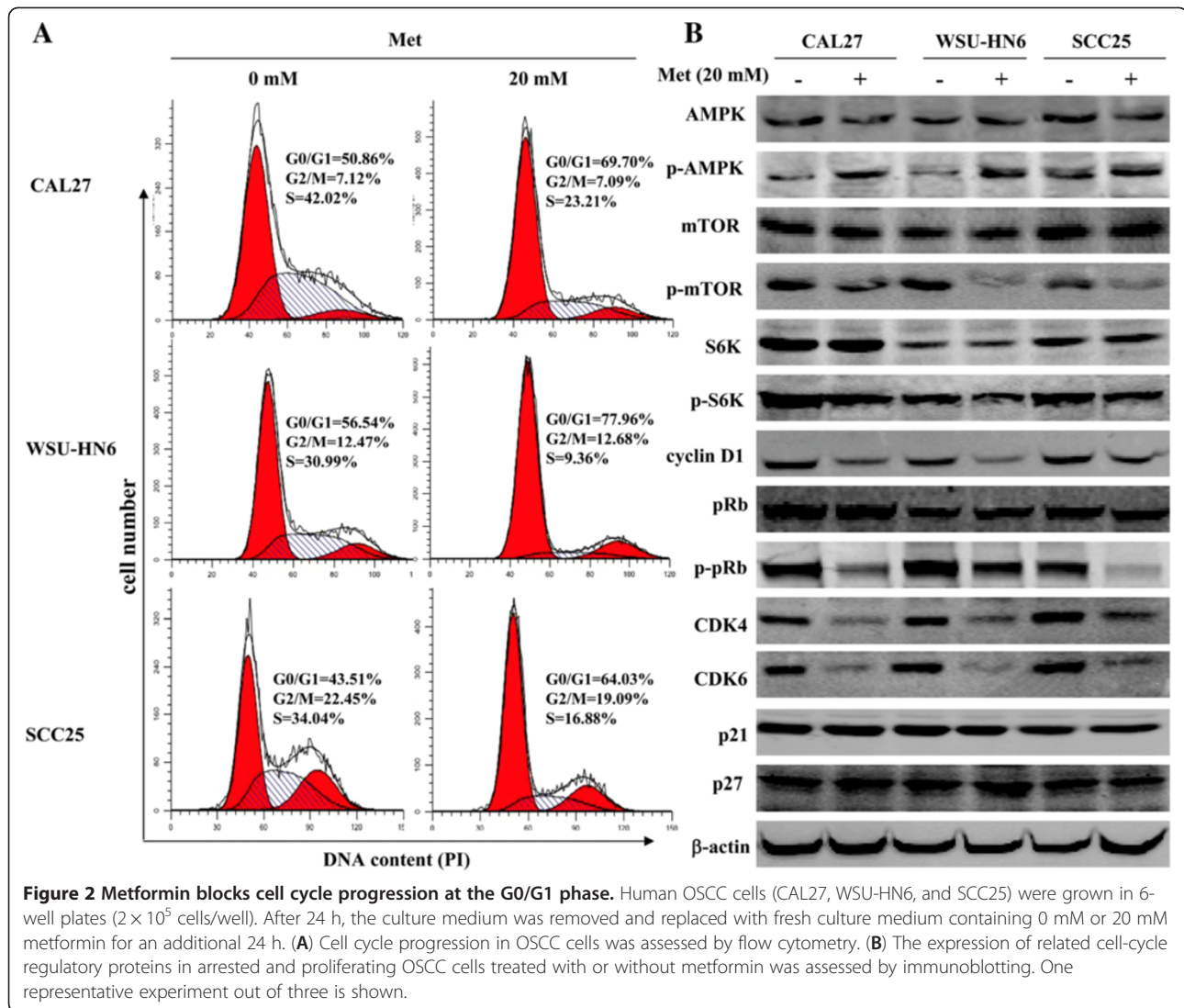


respectively (Figure 3A). The percentages of apoptotic tumor cells in the control groups of CAL27, WSU-HN6 and SCC25 were 7.8%, 5.5% and 9.2%, respectively (Figure 3A). To investigate the mechanisms underlying the apoptosis-inducing effect of metformin in OSCC cells, the levels of apoptosis-related proteins such as Bcl-2, Bcl-xL and Bax were measured in total protein from tumor cells treated with or without 20 mM metformin for 24 h and 48 h by western blot. Metformin significantly down-regulated the expression of the anti-apoptotic proteins Bcl-2 and Bcl-xL and up-regulated the pro-apoptotic protein Bax (Figure 3B). These results indicate that an apoptotic mechanism is implicated in the metformin-induced inhibition of proliferation in OSCC cells.

#### Metformin impairs OSCC growth *in vivo*

Finally, we investigated whether metformin could prevent OSCC progression *in vivo*. The CAL27 cell line was randomly selected for the establishment of the OSCC xenograft nude mouse model. After solid tumors were palpable (day 8), mice were randomly assigned into

control and treated groups. Metformin was administered orally to the treated group in drinking water (200 µg/ml), whereas the control mice only received fresh drinking water. During our experiments, no obvious side effects were observed in mice treated with metformin (data not shown). Tumor volumes and tumor weights were measured. Consistent with our *in vitro* results, oral administration of metformin led to a substantial inhibition of tumor growth by 58.77% (Figure 4A). CAL27 xenograft nude mice treated with metformin had a significantly reduced tumor burden compared with control mice, as reflected in the obvious reduction in the sizes and weights of tumors from metformin-treated mice (Figure 4B and 4C). The mean weights of the excised tumors were approximately 69.3% lower in mice treated with metformin than in untreated mice. To determine whether metformin affected cyclin D1 protein levels and apoptosis of tumor cells *in vivo*, we further analyzed cyclin D1 expression and apoptotic tumor cells in xenograft tumors by IHC and TUNEL staining, respectively. Metformin markedly reduced the expression of cyclin D1 and increased the number of apoptotic tumor cells

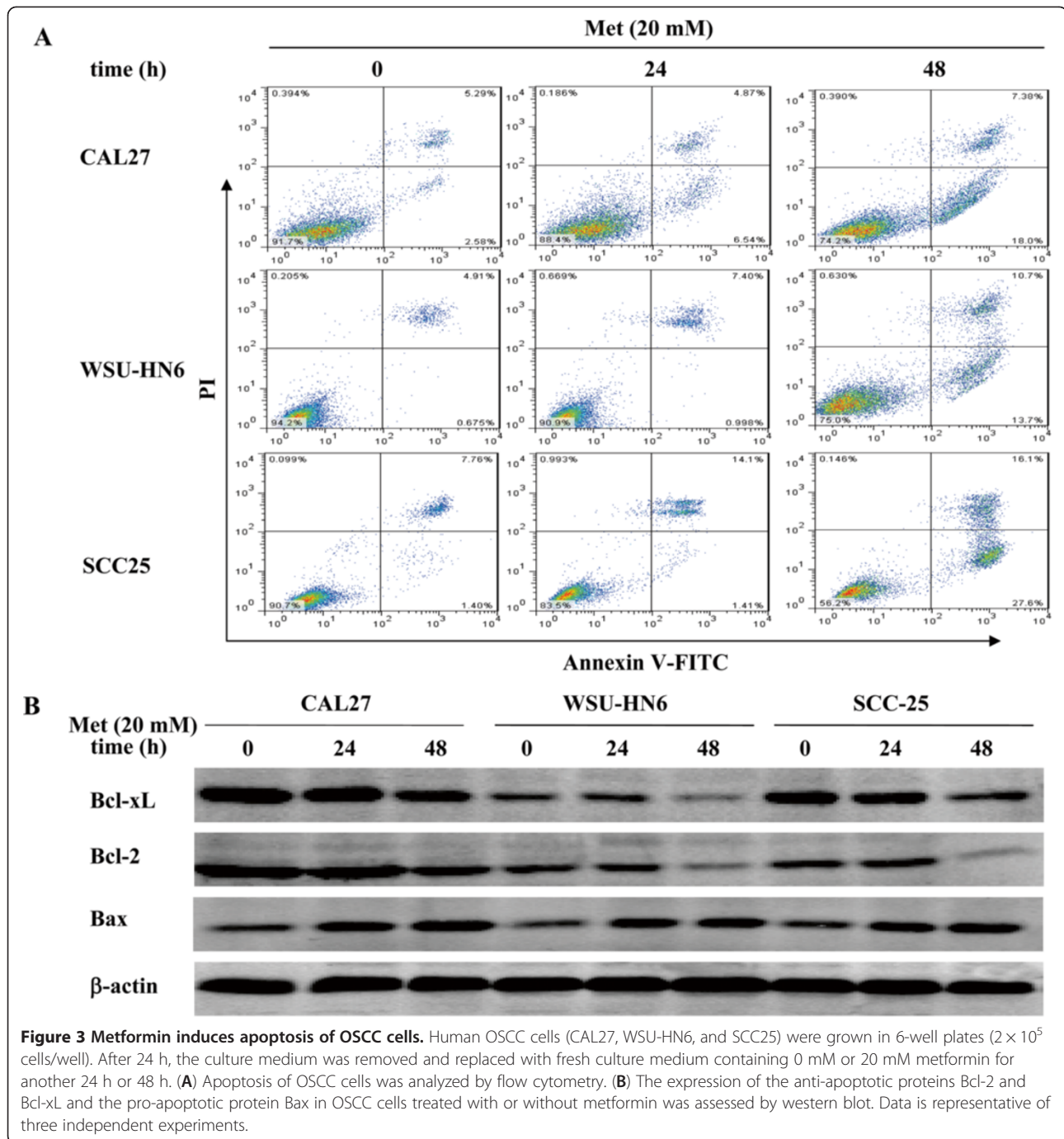


compared to the untreated controls (Figure 4D). Thus, similar to the *in vitro* results, metformin impairs the growth of OSCC cells *in vivo* through the induction of cell cycle arrest and apoptosis.

### Discussion

As a stable, inexpensive and highly effective oral drug, metformin has been used for the treatment of type 2 diabetes for several decades. It stimulates glucose uptake and increases fatty acid oxidation in muscle and liver with no adverse effects [3,17]. Recent data indicate that metformin can protect from cancer and inhibit the proliferation of several types of cancer cells *in vitro* and *in vivo*, such as breast cancer [18], gastric cancer [4], pancreatic cancer [19], and thyroid cancer [6]. The anti-tumor effects of metformin have been investigated in different types of adenocarcinoma; however, its effects on squamous cell carcinoma, a malignant tumor of

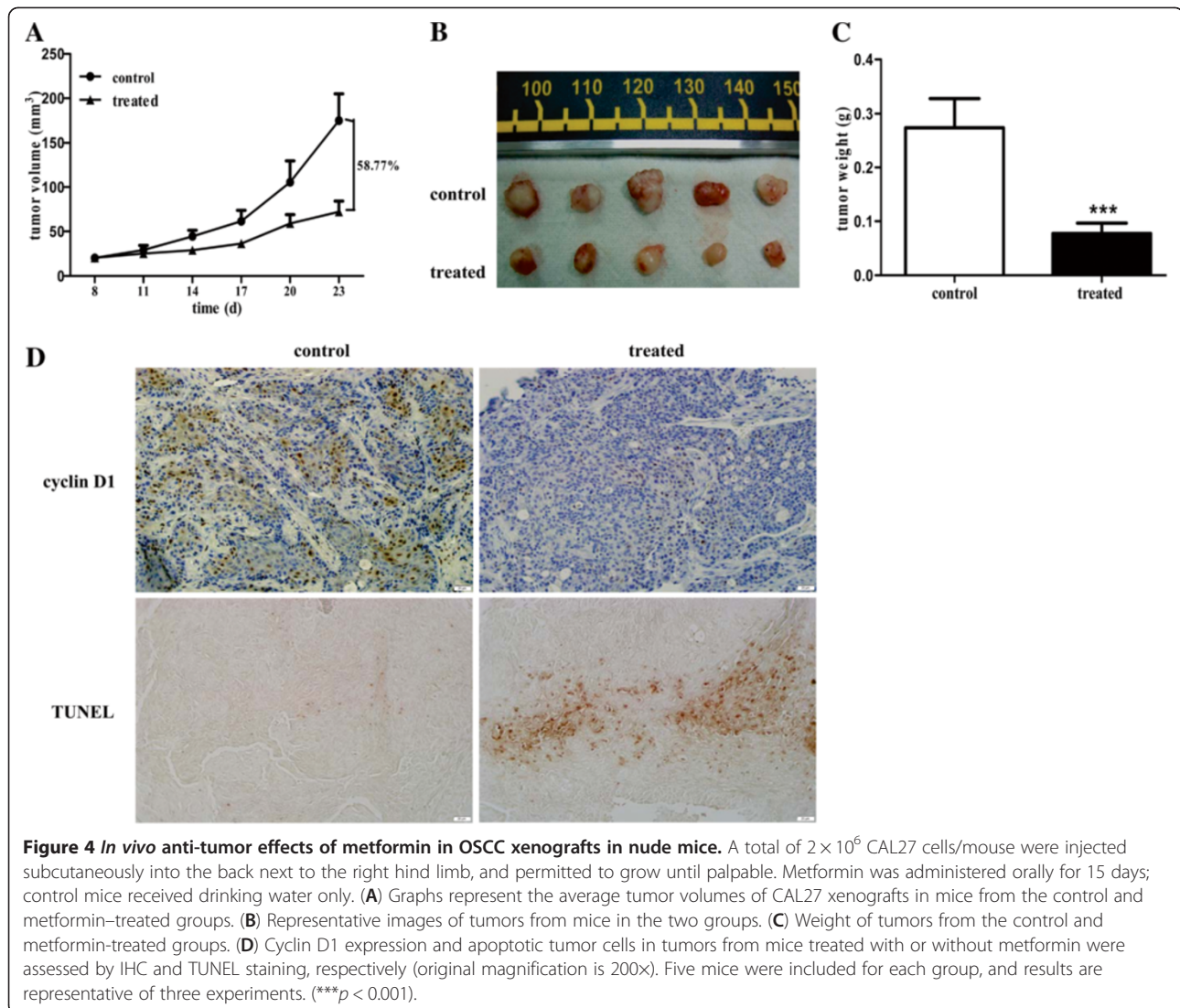
epidermal keratinocytes that invades the dermis, have not yet been well defined. Adenocarcinoma and squamous cell carcinoma can differ significantly in their symptoms, natural history, prognosis, and response to treatment owing to differences in cellular origin. In the present study we focused on the effects of metformin on OSCC, a common squamous cell carcinoma of the head and neck. The present findings are significant because 1) we demonstrate for the first time that metformin exerts potent anti-OSCC effects both *in vitro* and *in vivo*; 2) metformin induces cell cycle arrest at the G0/G1 phase and apoptosis of OSCC cells associated with the modulation of cell cycle-regulatory and apoptosis-related protein expression. CDK inhibitors such as p21 and p27 have been shown to play an important role in the inhibitory effects of metformin in previous studies [18,20]. However, in the present study, we did not observe significant changes of these proteins in OSCC cells



following metformin treatment. This discrepancy could be due to the differences in the properties of the different types of cancer cells.

A previous study showed that specific cyclin/CDK complexes are activated at different intervals during the cell cycle and complexes of CDK4 and CDK6 with cyclin D1 are required for G1 phase progression [21]. Down-regulation of cyclin D1 in response to metformin has been shown in several cancer cell lines

including breast cancer [18] and prostate cancer [11] cells. The effects of metformin on the catalytic subunits of cyclin D1, CDK4 and CDK6 in OSCC cells, however, remain unknown. In the present study, metformin blocked cell cycle progression at the G0/G1 phase, which was correlated with a remarkable decrease in the expression of cyclin D1 and phosphorylation of pRb, two major cell-cycle regulators. Cyclin D1 binds to and activates CD4/CDK6, which then phosphorylates



pRb. Upon phosphorylation, pRb releases the transcription factor E2F, which activates the transcription of genes required for G1/S phase transition [22]. Cyclin D1 gene amplification and overexpression are observed in several types of human cancer including OSCC [23-25]. Furthermore, overexpressed cyclin D1 is associated with enhanced tumor growth and chemotherapy resistance [24,26]. Thus, cyclin D1 is a potential molecular target for the treatment of OSCC. In addition to its effect on cyclin D1, metformin strongly inhibits the phosphorylation of pRb in OSCC cells, blocking the activation of E2F. Activation of E2F by disruption of the Rb tumor suppressor pathway is a key event in the development of many human cancers. Increased expression of E2F is associated with malignant transformation in OSCC, and down-regulation of this transcription factor is associated with induction of apoptosis and cell cycle arrest in OSCC cells [27,28]. Therefore, our results suggest that metformin could be

developed as a potential therapeutic agent to block the progression of OSCC.

In the present study, metformin activated the AMPK pathway and inhibited S6K and mTOR phosphorylation in OSCC cells, suggesting that the mTOR pathway may be involved in mediating the effect of metformin in these cells. However, the role of AMPK in the activation of mTOR signaling is the subject of controversy. Using siRNA against the two catalytic subunits of AMPK, Ben Sahara et al. demonstrated that the anti-proliferative effect of metformin was mediated by the mTOR pathway independently of AMPK [11]. On the other hand, Zakikhani et al. showed that metformin inhibited cell growth via the  $\alpha 1$  AMPK subunit in MCF-7 breast cancer cells [29]. Although our results clearly showed the growth inhibitory effect of metformin in OSCC, the involvement of the AMPK pathway in the anti-tumor effect of metformin on OSCC remains to be elucidated. Moreover, because



metformin is known to play a role in the control of cell metabolism, it would be interesting to determine whether the metabolic consequences of metformin are related to its anti-proliferative effects.

In addition to the effect of metformin on the cell cycle, we examined whether the anti-neoplastic effect of this agent is mediated by the induction of apoptosis. Our flow cytometry results demonstrated that metformin significantly induced apoptosis in all three OSCC cell lines. These findings were further confirmed by our western blot results showing a significant down-regulation of the anti-apoptotic proteins Bcl-2 and Bcl-xL and the up-regulation of the pro-apoptotic protein Bax. Several death and survival genes, such as Bcl-2 or Bax, which are regulated by extracellular factors, are involved in apoptosis [30]. When the ratio of pro-apoptotic Bcl-2 family members (Bax, Bad) to anti-apoptotic Bcl-2 family members (Bcl-2, Bcl-xL and Mcl-1) increases, pores form in the outer mitochondrial membrane, liberating apoptogenic mitochondrial proteins to activate caspases and induce apoptosis [31]. Data concerning the effect of metformin on apoptosis in cancer cells are limited and controversial. A recent study indicated that metformin suppressed the growth of human head and neck squamous cell carcinoma mainly via G1 arrest, which coincided with a decrease in the protein levels of CDKs, cyclins and CDK inhibitors [32]. Ben Sahra et al. also showed that metformin blocked the cell cycle in the G0/G1 phase in prostate cancer cells and did not induce apoptosis [11]. In contrast, metformin has been shown to promote apoptosis in pancreatic cancer [19] and melanoma [9] cells. This discrepancy between studies regarding the effect of metformin on apoptosis may be the result of variations in experimental conditions, cell-specific functions and/or different cell origin, and suggests that further investigation is necessary. Moreover, Hirsch et al. [33] reported that low doses of metformin could inhibit cellular transformation and selectively kill cancer stem cells in four genetically different types of breast cancer, thus inhibited the tumor growth both *in vitro* and *in vivo*. Whether similar mechanisms also contribute to the anti-cancer effect of metformin in OSCC still needs to be identified in our further study.

Although the doses of 20 mM metformin used in our *in vitro* study are similar to those used in prior studies on gastric cancer [4], melanoma [9] and breast cancer [29], one can still argue that these doses are above physiological levels. Indeed, the concentration of metformin in the blood of type 2 diabetic patients treated with the drug is approximately 30~60  $\mu\text{mol/L}$  [34], which indicates that the doses used in our study exceeded the therapeutic level by 300-fold. However, it has been reported that metformin accumulates in tissues at concentrations similar to the dose used in our experiments

[35,36]. Moreover, tumor cells in culture are grown under high concentrations of glucose and 10% FBS, which results in excessive growth stimulation. This may also contribute to the high dose of metformin required to exert anti-tumor effects in a cell culture system compared to the dose used in patients with diabetes. Furthermore, according to the study of Ben Sahra et al., the doses of 1 to 3 mg/day metformin caused no side effect in mice, which was equal to the dosage used for patients [11], we obtained a strong inhibition of OSCC tumor growth *in vivo*. 200  $\mu\text{g/ml}$  metformin administered orally significantly decreased OSCC growth in a xenograft model. This result is of particular importance as it is the first time that metformin is shown to inhibit OSCC tumor growth *in vivo*.

## Conclusions

The present study used a cell culture system and a tumor xenograft mouse model to demonstrate for the first time that metformin effectively inhibits OSCC cell proliferation and tumor growth *in vitro* and *in vivo*. Our results suggest that metformin could be a potential candidate for the development of novel treatment strategies for human OSCC, which warrants further investigation.

## Abbreviations

OSCC: Oral squamous cell carcinoma; Metformin: 1,1-dimethylbiguanide hydrochloride; AMPK: AMP-activated protein kinase; mTOR: Mammalian target of rapamycin; S6K: S6 kinase; pRb: Retinoblastoma protein; CDK: Cyclin-dependent kinase; TUNEL: Terminal deoxynucleotidyl transferase (TdT)-mediated nick end labeling; PI: Propidium iodide; IHC: Immunohistochemical.

## Competing interests

The authors declare that they have no competing interests.

## Authors' contributions

FXC and QQL designed and coordinated the study. QQL and DH carried out all the experiments, performed the statistical analysis and drafted the manuscript. SQH and ZJS helped with the animal experiments. MY contributed to the cell culture and the IHC staining. All authors read and approved the final manuscript.

## Acknowledgments

This work was supported by the National Natural Science Foundation of China (81001205, 81200299 and 81100023), the Innovation Program of Shanghai Municipal Education Commission (12YZ050) and the fund of the Ninth's Hospital, Shanghai Jiao Tong University School of Medicine (JY2011A08). The authors thank Professor Wantao Chen and the Shanghai Key Laboratory of Stomatology for kindly providing the OSCC cell lines.

## Author details

<sup>1</sup>Department of Clinical Laboratories, Ninth People's Hospital Affiliated to Shanghai Jiao Tong University School of Medicine, 639 Zhizaoju Road, Shanghai 200011, China. <sup>2</sup>Department of Oral and Maxillofacial Surgery, Ninth People's Hospital, Shanghai Jiao Tong University School of Medicine, Shanghai, China.

Received: 25 May 2012 Accepted: 11 November 2012  
Published: 14 November 2012

## References

1. Scully C, Bagan J: **Oral squamous cell carcinoma overview.** *Oral Oncol* 2009, **45**(4-5):301-308.
2. Jemal A, Siegel R, Xu J, Ward E: **Cancer statistics, 2010.** *CA Cancer J Clin* 2010, **60**(5):277-300.
3. Zhou G, Myers R, Li Y, Chen Y, Shen X, Fenyk-Melody J, Wu M, Ventre J, Doebber T, Fujii N, et al: **Role of AMP-activated protein kinase in mechanism of metformin action.** *J Clin Invest* 2001, **108**(8):1167-1174.
4. Kato K, Gong J, Iwama H, Kitanaka A, Tani J, Miyoshi H, Nomura K, Mimura S, Kobayashi M, Aritomo Y, et al: **The antidiabetic drug metformin inhibits gastric cancer cell proliferation in vitro and in vivo.** *Mol Cancer Ther* 2012, **11**(3):549-560.
5. Bao B, Wang Z, Ali S, Ahmad A, Azmi AS, Sarkar SH, Banerjee S, Kong D, Li Y, Thakur S, et al: **Metformin inhibits cell proliferation, migration and invasion by attenuating CSC function mediated by deregulating miRNAs in pancreatic cancer cells.** *Cancer Prev Res (Phila)* 2012, **5**(3):355-364.
6. Klubo-Gwiezdzinska J, Jensen K, Costello J, Patel A, Hoperia V, Bauer A, Burman K, Wartofsky L, Vasko V: **Metformin inhibits growth and decreases resistance to anoikis in medullary thyroid cancer cells.** *Endocr Relat Cancer* 2012, **19**(3):447-456.
7. Zhuang Y, Miskimins WK: **Metformin induces both caspase-dependent and poly(ADP-ribose) polymerase-dependent cell death in breast cancer cells.** *Mol Cancer Res* 2011, **9**(5):603-615.
8. Tan BK, Adya R, Chen J, Lehnert H, Sant Cassia LJ, Randeve HS: **Metformin treatment exerts antiinvasive and antimetastatic effects in human endometrial carcinoma cells.** *J Clin Endocrinol Metab* 2011, **96**(3):808-816.
9. Janjetovic K, Harhaji-Trajkovic L, Misirkic-Marjanovic M, Vucicevic L, Stevanovic D, Zogovic N, Sumarac-Dumanovic M, Micic D, Trajkovic V: **In vitro and in vivo anti-melanoma action of metformin.** *Eur J Pharmacol* 2011, **668**(3):373-382.
10. Rattan R, Graham RP, Maguire JL, Giri S, Shridhar V: **Metformin suppresses ovarian cancer growth and metastasis with enhancement of cisplatin cytotoxicity in vivo.** *Neoplasia* 2011, **13**(5):483-491.
11. Ben Sahra I, Laurent K, Loubat A, Giorgetti-Peraldi S, Colosetti P, Auberger P, Tanti JF, Le Marchand-Brustel Y, Bost F: **The antidiabetic drug metformin exerts an antitumoral effect in vitro and in vivo through a decrease of cyclin D1 level.** *Oncogene* 2008, **27**(25):3576-3586.
12. Anisimov VN, Berstein LM, Egorin PA, Piskunova TS, Popovich IG, Zabezhinski MA, Kovalenko IG, Poroshina TE, Semenchenko AV, Provinciali M, et al: **Effect of metformin on life span and on the development of spontaneous mammary tumors in HER-2/neu transgenic mice.** *Exp Gerontol* 2005, **40**(8-9):685-693.
13. Memmott RM, Mercado JR, Maier CR, Kawabata S, Fox SD, Dennis PA: **Metformin prevents tobacco carcinogen-induced lung tumorigenesis.** *Cancer Prev Res (Phila)* 2010, **3**(9):1066-1076.
14. Anisimov VN, Egorin PA, Piskunova TS, Popovich IG, Tyndyk ML, Yurova MN, Zabezhinski MA, Anikin IV, Karkach AS, Romanyukha AA: **Metformin extends life span of HER-2/neu transgenic mice and in combination with melatonin inhibits growth of transplantable tumors in vivo.** *Cell Cycle* 2010, **9**(1):188-197.
15. Noto H, Goto A, Tsujimoto T, Noda M: **Cancer risk in diabetic patients treated with metformin: a systematic review and meta-analysis.** *PLoS One* 2012, **7**(3):e33411.
16. Garrett CR, Hassabo HM, Bhadkamkar NA, Wen S, Baladandayuthapani V, Kee BK, Eng C, Hassan MM: **Survival advantage observed with the use of metformin in patients with type II diabetes and colorectal cancer.** *Br J Cancer* 2012, **106**(8):1374-1378.
17. Correia S, Carvalho C, Santos MS, Seica R, Oliveira CR, Moreira PL: **Mechanisms of action of metformin in type 2 diabetes and associated complications: an overview.** *Mini Rev Med Chem* 2008, **8**(13):1343-1354.
18. Zhuang Y, Miskimins WK: **Cell cycle arrest in Metformin treated breast cancer cells involves activation of AMPK, downregulation of cyclin D1, and requires p27Kip1 or p21Cip1.** *J Mol Signal* 2008, **3**:18.
19. Wang LW, Li ZS, Zou DW, Jin ZD, Gao J, Xu GM: **Metformin induces apoptosis of pancreatic cancer cells.** *World J Gastroenterol* 2008, **14**(47):7192-7198.
20. Rocha GZ, Dias MM, Ropelle ER, Osorio-Costa F, Rossato FA, Vercesi AE, Saad MJ, Carvalheira JB: **Metformin amplifies chemotherapy-induced AMPK activation and antitumoral growth.** *Clin Cancer Res* 2011, **17**(12):3993-4005.
21. Masaki T, Shiratori Y, Rengifo W, Igarashi K, Yamagata M, Kurokohchi K, Uchida N, Miyauchi Y, Yoshiji H, Watanabe S, et al: **Cyclins and cyclin-dependent kinases: comparative study of hepatocellular carcinoma versus cirrhosis.** *Hepatology* 2003, **37**(3):534-543.
22. Matsushima H, Quelle DE, Shurtleff SA, Shibuya M, Sherr CJ, Kato JY: **D-type cyclin-dependent kinase activity in mammalian cells.** *Mol Cell Biol* 1994, **14**(3):2066-2076.
23. Huang SF, Cheng SD, Chuang WY, Chen IH, Liao CT, Wang HM, Hsieh LL: **Cyclin D1 overexpression and poor clinical outcomes in Taiwanese oral cavity squamous cell carcinoma.** *World j surgical oncology* 2012, **10**:40.
24. Feng Z, Guo W, Zhang C, Xu Q, Zhang P, Sun J, Zhu H, Wang Z, Li J, Wang L, et al: **CCND1 as a predictive biomarker of neoadjuvant chemotherapy in patients with locally advanced head and neck squamous cell carcinoma.** *PLoS One* 2011, **6**(10):e26399.
25. Mahdey HM, Ramanathan A, Ismail SM, Abraham MT, Jamaluddin M, Zain RB: **Cyclin d1 amplification in tongue and cheek squamous cell carcinoma.** *Asian Pac J Cancer Prev* 2011, **12**(9):2199-2204.
26. Zhou X, Zhang Z, Yang X, Chen W, Zhang P: **Inhibition of cyclin D1 expression by cyclin D1 shRNAs in human oral squamous cell carcinoma cells is associated with increased cisplatin chemosensitivity.** *Int J Cancer* 2009, **124**(2):483-489.
27. Yuan H, Jiang F, Wang R, Shen M, Chen N: **Lentivirus-mediated RNA interference of E2F-1 suppresses Tca8113 cell proliferation.** *Mol Med Report* 2012, **5**(2):420-426.
28. Du Y, Zhang S, Wang Z, Zhou W, Luan M, Yang X, Chen N: **Induction of apoptosis and cell cycle arrest by NS398 in oral squamous cell carcinoma cells via downregulation of E2 promoter-binding factor-1.** *Oncol Rep* 2008, **20**(3):605-611.
29. Zakikhani M, Dowling R, Fantus IG, Sonenberg N, Pollak M: **Metformin is an AMP kinase-dependent growth inhibitor for breast cancer cells.** *Cancer Res* 2006, **66**(21):10269-10273.
30. Kang MH, Reynolds CP: **Bcl-2 inhibitors: targeting mitochondrial apoptotic pathways in cancer therapy.** *Clin Cancer Res* 2009, **15**(4):1126-1132.
31. Adams JM, Cory S: **The Bcl-2 protein family: arbiters of cell survival.** *Science* 1998, **281**(5381):1322-1326.
32. Sikka A, Kaur M, Agarwal C, Deep G, Agarwal R: **Metformin suppresses growth of human head and neck squamous cell carcinoma via global inhibition of protein translation.** *Cell Cycle* 2012, **11**(7):1374-1382.
33. Hirsch HA, Iliopoulos D, Tschlis PN, Struhl K: **Metformin selectively targets cancer stem cells, and acts together with chemotherapy to block tumor growth and prolong remission.** *Cancer Res* 2009, **69**(19):7507-7511.
34. Martin-Castillo B, Vazquez-Martin A, Oliveras-Ferraras C, Menendez JA: **Metformin and cancer: doses, mechanisms and the dandelion and horsetail phenomena.** *Cell Cycle* 2010, **9**(6):1057-1064.
35. Wilcock C, Bailey CJ: **Accumulation of metformin by tissues of the normal and diabetic mouse.** *Xenobiotica* 1994, **24**(1):49-57.
36. Owen MR, Doran E, Halestrap AP: **Evidence that metformin exerts its anti-diabetic effects through inhibition of complex 1 of the mitochondrial respiratory chain.** *Biochem J* 2000, **348**(Pt 3):607-614.

doi:10.1186/1471-2407-12-517

Cite this article as: Luo et al.: *In vitro and in vivo anti-tumor effect of metformin as a novel therapeutic agent in human oral squamous cell carcinoma.* *BMC Cancer* 2012 **12**:517.

Submit your next manuscript to BioMed Central and take full advantage of:

- Convenient online submission
- Thorough peer review
- No space constraints or color figure charges
- Immediate publication on acceptance
- Inclusion in PubMed, CAS, Scopus and Google Scholar
- Research which is freely available for redistribution

Submit your manuscript at  
www.biomedcentral.com/submit

