

RESEARCH ARTICLE

Open Access

# Mineral metabolism and outcomes in chronic kidney disease stage 2–4 patients

Kamonwan Chartsrisak, Kotcharat Vipattawat, Montira Assanatham, Arkom Nongnuch, Atiporn Ingsathit, Somnuek Domrongkitchaiporn, Vasant Sumethkul and Sinee Distha-Banchong\*

## Abstract

**Background:** Marked hyperphosphatemia, hyperparathyroidism and 25-hydroxyvitamin D deficiency are associated with mortality in dialysis patients. Such data in chronic kidney disease stage 2–4 population are limited. It has been suggested that high-normal serum phosphate predicts worse renal and patient outcomes. The data regarding parathyroid hormone and outcomes in this population is limited. The present study examined mineral metabolism and its association with the development of end-stage renal disease and mortality in stage 2–4 chronic kidney disease patients.

**Methods:** This is a prospective cohort study that included 466 non-dialysis chronic kidney disease stage 2–4 patients. Mineral parameters were obtained at the time of enrollment and the patients were followed prospectively for 25 (1–44) months or until they reached the endpoints of end-stage renal disease or mortality.

**Results:** Hyperparathyroidism and 25-hydroxyvitamin D deficiency began to occur in the early stages of chronic kidney disease, whereas significant hyperphosphatemia only developed in the later stages. High-normal and mildly elevated serum phosphate (>4.2 mg/dL) predicted the composite outcome of end-stage renal disease or mortality after adjustments for cardiovascular risk factors, chronic kidney disease stage and other mineral parameters. Parathyroid hormone levels above the upper limit of normal (>65 pg/mL) predicted the future development of end-stage renal disease and the composite outcome of end-stage renal disease or mortality after adjustments. 25-hydroxyvitamin D deficiency (<15 ng/mL) was also associated with worse outcomes.

**Conclusions:** In chronic kidney disease, hyperparathyroidism developed prior to significant hyperphosphatemia confirming the presence phosphate retention early in the course of chronic kidney disease. High-normal serum phosphate and mildly elevated parathyroid hormone levels predicted worse renal and patient outcomes. This data emphasizes the need for early intervention in the care of chronic kidney disease stage 2–4 patients.

**Keywords:** CKD, PTH, Vitamin D, Dialysis, ESRD, Thailand

## Background

Chronic kidney disease (CKD) is associated with an increased risk of mortality [1]. As kidney function deteriorates, abnormalities of mineral metabolism began to develop. Hyperphosphatemia, hyperparathyroidism and vitamin D deficiency have been shown to predict all-cause and cardiovascular mortality in dialysis patients [2,3]. Derangements of mineral metabolism began to occur in the early stages of chronic kidney disease [4]. Despite the presence of phosphate retention in this early

period, hyperphosphatemia does not develop until later stages owing to an increase in parathyroid hormone (PTH) and fibroblast growth factor 23 (FGF-23) whose actions result in augmented urinary phosphate excretion [5]. Previous studies have also suggested that, in less advanced stages of CKD, an increase in serum phosphate albeit within the normal range in association with an increase in FGF-23 predicted the development of cardiovascular events and mortality [6–8]. This data emphasizes the importance of phosphate retention on patient outcomes. Limited data is available regarding the relationship between PTH and outcomes in CKD stages 2–4. The aim of the present study was to examine the associations between

\* Correspondence: sineemd@hotmail.com  
Division of Nephrology, Department of Medicine, Faculty of Medicine, Ramathibodi Hospital, Mahidol University, Bangkok 10400, Thailand

mineral parameters including serum phosphate, PTH and vitamin D and outcomes of end-stage renal disease (ESRD) and mortality in CKD stage 2–4 patients.

## Methods

### Patients

This study was approved by the ethical committee for research involving human subjects of the Faculty of Medicine, Ramathibodi Hospital, Mahidol University and was conducted according to the Declaration of Helsinki. Informed consent was obtained from all participants. Non-dialysis CKD patients with serum creatinine  $\geq 1.1$  mg/dL in females, and  $\geq 1.2$  mg/dL in males, were recruited during routine follow-up visits to the outpatient clinic of Ramathibodi Hospital, between May 2008 to December 2010. Patients with acute illnesses or acute kidney injury were excluded.

Medical chart review was performed to collect data on baseline demographics and characteristics. Cardiovascular disease (CVD) was defined by a history of coronary artery disease (myocardial infarction, unstable angina, positive coronary angiography or abnormal myocardial perfusion scan), cerebrovascular disease or peripheral arterial disease. Diabetes mellitus (DM) was defined according to the WHO criteria or the use of hypoglycemic agents. Dyslipidemia was defined as total cholesterol  $\geq 240$  mg/dL, LDL  $\geq 130$  mg/dL, triglycerides  $\geq 200$  mg/dL, or by the use of statin. The history of calcium intake was defined as receiving oral calcium tablets with elemental calcium  $\geq 500$  mg per day for at least 3 months prior to the recruitment. The history of nutritional vitamin D intake was defined as receiving a cumulative dose of  $\geq 5,000$  IU of ergocalciferol or cholecalciferol per month for at least 3 months prior to the recruitment. The history of active vitamin D intake was defined as receiving calcitriol or alfacalcidol at a minimum dosage of 0.25  $\mu$ g 3 times per week for at least 3 months prior to the recruitment. None of the patients received non-calcium-containing phosphate binders or calcimimetics because the availabilities of these drugs in Thailand were limited.

### Laboratory data

Laboratory data including serum calcium, phosphate, albumin, cholesterol, alkaline phosphatase (ALP), blood urea nitrogen (BUN), creatinine (Cr), intact parathyroid hormone (PTH), 25-hydroxyvitamin D (25-OH-D) and spot urine protein creatinine ratio (UPCR) were obtained at the time of enrollment. Blood and urine samples were analyzed using a Dade Behring Dimension RxL chemical analyzer (Siemens, Germany). Intact PTH was determined by an immunoradiometric assay (ELISA-PTH, Cisbio International, France). 25-OH-D was determined by a chemiluminescent immunoassay.

Serum calcium was corrected based on the following equation: corrected calcium = serum calcium + [(40 – serum albumin)  $\div$  (10  $\times$  0.8)]. Estimated GFR was calculated using a modified MDRD formula validated for the Thai population: eGFR = (375.5  $\times$  Cr<sup>(-0.848)</sup>  $\times$  Age<sup>(-0.364)</sup>)  $\times$  0.712 if female [9].

### Outcomes

The study commenced at the time of enrollment when all laboratory data were obtained. Patients were followed prospectively until they reached ESRD, mortality or the end of January 2012. Outcomes were time to death-censored ESRD or time to the composite outcome of ESRD or all-cause mortality, whichever came first. Those who were lost to follow-up were contacted by phone and asked whether they were still alive and remained free of dialysis. The survival data of the patients who could not be reached by phone were cross-referenced with the national civil registration database and therefore, the mortality data was available in all patients. Eleven patients who did not have a follow-up renal function were presumed to be free of dialysis.

### Statistical analysis

Results are presented as mean  $\pm$  SD unless specified otherwise. One-way ANOVA or Kruskal-Wallis test were used to compare the differences among groups of continuous data. Chi-square test was applied to test the differences among groups of categorical data. The significance of trends of multiple groups was analyzed by linear-by-linear association in a Chi-square test. The relationship between two continuous variables was evaluated by a Pearson's correlation. Non-normal distribution data were log-transformed prior to analyses. Cox proportional hazards regression was used to determine the associations between mineral parameters and outcomes. Cox models were adjusted for age, sex, DM, BMI, serum albumin, eGFR ( $\geq 45$  or  $< 45$  mL/min/1.73 m<sup>2</sup>) and mineral parameters at baseline. Variables were checked for multicollinearity prior to entering into the multivariate models. All computations were performed using SPSS version 17.0 software (SPSS, Chicago, IL). A p-value of less than 0.05 was considered statistically significant.

## Results

### Baseline characteristics and mineral parameters

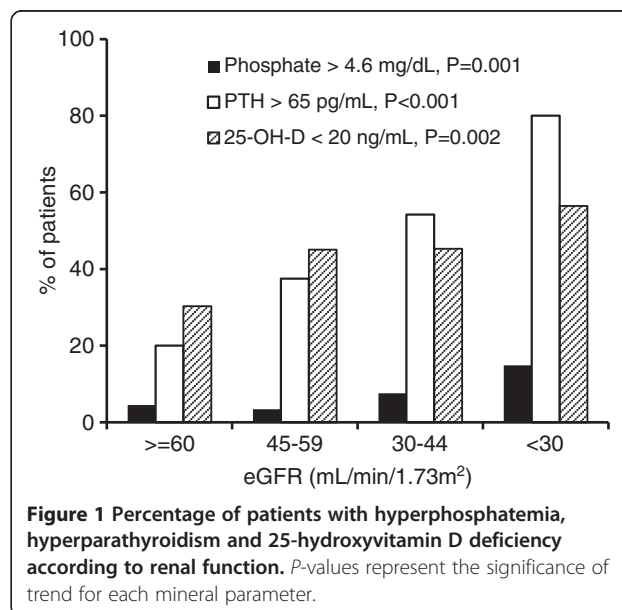
A total of 466 patients were enrolled in the study. The median follow-up time was 24.6 (range 1–44) months. Baseline demographics and laboratory data of all patients and classification according to the eGFR are shown in Table 1. As renal function deteriorated, serum phosphate and PTH increased significantly, whereas serum calcium was largely unchanged. With rising serum phosphate and PTH, more patients were prescribed oral calcium and active vitamin D.

**Table 1 Baseline demographics and laboratory data of all patients and classification according to renal function**

Parameters	eGFR (mL/min/1.73m <sup>2</sup> )					P-value <sup>a</sup>
	All Patients (n=466)	>=60 (n=67)	45-59 (n=123)	30-44 (n=161)	<=29 (n=115)	
Age (yrs)	65±13.2	61.2±15.1	62.6±13.7	66.1±12.3	68±11.6	<0.001
Male Sex (n/%)	261 (56)	60 (89.6)	90 (73.2)	75 (46.6)	36 (31.3)	<0.001
BMI (kg/m <sup>2</sup> )	25.4±4.7	25±3.9	26.6±5.2	25±4.5	24.9±4.6	0.16
Hypertension (n/%)	422 (90.6)	58 (86.6)	115 (93.5)	147 (91.3)	102 (88.7)	0.948
Dyslipidemia (n/%)	324 (69.5)	49 (73.1)	85 (69.1)	114 (70.8)	76 (66.1)	0.404
DM (n/%)	263 (56.4)	28 (41.8)	65 (52.8)	102 (63.4)	68 (59.1)	0.011
CVD (n/%)	104 (22.3)	9 (13.4)	25 (20.3)	42 (26.1)	28 (24.3)	0.967
Calcium intake (n/%)	133 (28.5)	10 (14.9)	22 (17.9)	45 (28)	56 (48.7)	<0.001
Nutritional vitamin D (n/%)	49 (10.5)	7 (10.4)	11 (8.9)	20 (12.4)	11 (9.6)	0.972
Active vitamin D (n/%)	18 (3.9)	0 (0)	1 (0.8)	4 (2.5)	13 (11.3)	<0.001
<i>Laboratory data</i>						
Calcium (mg/dL) <sup>b</sup>	9.3±0.5	9.19±0.53	9.27±0.43	9.32±0.44	9.28±0.55	0.195
Phosphate (mg/dL)	3.8±0.6	3.45±0.51	3.58±0.55	3.81±0.56	4.12±0.71	<0.001
Alkaline Phosphatase (U/L)	73.4±28.6	65.5±23.6	67.8±25	78.2±27.9	79.2±34.9	0.034
PTH (pg/mL) <sup>c</sup>	66 (43–105)	40 (29–61)	58 (38–74)	70 (48–103)	117 (71–173)	<0.001
25-OH-D (ng/mL)	22±9.1	24.6±9.2	22.7±10.3	22.1±8.3	19.8±8.3	<0.001
Albumin (g/L)	37.5±5.2	38.1±6.6	39.2±4.3	37.1±5.2	36±4.8	<0.001
Cholesterol (mg/dL)	192±56	205±74	194±55	188±57	189±41	0.301
BUN (mg/dL)	29.7±14.6	16.1±4.7	22.4±6.8	29.6±9.7	45.1±16.2	<0.001
Creatinine (mg/dL)	2.25±1.21	1.23±0.16	1.62±0.34	2.12±0.49	3.68±1.53	<0.001
eGFR (mL/min/1.73 m <sup>2</sup> )	42.3±16.4	70.2±9.6	51.9±4.4	37.1±4.1	22.1±5.2	<0.001
UPCR (mg/g) <sup>c,d</sup>	0.67 (0.21-2.43)	0.24 (0.11-0.88)	0.35 (0.12-1.72)	0.58 (0.24-1.89)	1.78 (0.77-3.86)	<0.001

<sup>a</sup>P-value for trend from eGFR>=60 to <=29, <sup>b</sup>corrected calcium, <sup>c</sup>median (IQR), <sup>d</sup>spot urine protein/creatinine ratio.

Despite the decrease in 25-OH-D levels with worsening renal function, there was no significant change in the number of patients who received nutritional vitamin D supplements. In addition to the eGFR, serum phosphate was positively correlated with serum calcium ( $r=0.177$ ,  $P<0.001$ ) and PTH ( $r=0.176$ ,  $P<0.001$ ) but negatively correlated with 25-OH-D ( $r=-0.157$ ,  $P<0.001$ ). An inverse relationship between PTH and serum calcium ( $r=-0.274$ ,  $P<0.001$ ) as well as 25-OH-D ( $r=-0.216$ ,  $P<0.001$ ) was observed. 25-OH-D displayed a strong negative association with UPCR ( $r=-0.354$ ,  $P<0.001$ ) and correlated positively with serum albumin ( $r=0.245$ ,  $P<0.001$ ). Figure 1 illustrated the prevalence of hyperphosphatemia, hyperparathyroidism and 25-OH-D deficiency according to the eGFR. Significant hyperparathyroidism and 25-OH-D deficiency occurred earlier in the course of CKD, but significant hyperphosphatemia only developed in the later period. Overall in this population of CKD stage 2–4 patients, 36 (7.7%) patients had hyperphosphatemia, 229 (49.1%) had hyperparathyroidism and 213 (45.7%) were vitamin D deficient.



### Mineral parameters and outcomes

At the end of the follow-up period, ESRD occurred in 74 (15.9%) patients, death in 40 (8.6%) patients, and both ESRD and death in 6 (1.3%) patients. Outcomes in the present study were time to death-censored ESRD or time to the composite outcome of ESRD or all-cause mortality. To analyze whether any of the baseline mineral parameters were associated with outcomes, serum calcium, phosphate, PTH and 25-OH-D were divided into tertiles or quartiles. In univariable Cox proportional hazards models, serum calcium, oral calcium or vitamin D intake did not show significant associations with the outcomes. Serum phosphate greater than 3.7 mg/dL was associated with the development of ESRD in an unadjusted model (Table 2). After adjustments for eGFR ( $\geq 45$  or  $< 45$  mL/min/1.73 m<sup>2</sup>) and CVD risk factors including age, sex, DM, BMI and serum albumin (Model 1), only the highest tertile of serum phosphate ( $> 4.2$  mg/dL) predicted future ESRD. The relationship between serum phosphate and the outcome was lost after the model was further adjusted for PTH and 25-OH-D (Model 2). High-normal PTH levels (42–65 pg/mL) were associated with the development of ESRD in an unadjusted model. After adjustments for eGFR and CVD risk factors and mineral parameters including phosphate and 25-OH-D, only PTH levels above the upper limit of normal ( $> 65$  pg/mL) were associated with ESRD. 25-OH-D levels less than 15 ng/mL predicted the future development of ESRD. The relationship between low 25-OH-D levels and ESRD remained significant after adjustments for eGFR, CVD risk factors and serum phosphate. PTH and 25-OH-D levels were highly correlated; therefore, PTH was excluded from the multivariate model. With the composite outcome of ESRD

or mortality, the highest tertile of serum phosphate was associated with the outcome in all models. Results similar to those obtained with the outcome of ESRD were observed with PTH and 25-OH-D (Table 3). When only mortality event was used in survival analyses, the relationship between mineral parameters and the outcome was not found. Adjusted survival curves according to the median serum phosphate and PTH are shown in Figures 2 and 3. Serum phosphate greater than 3.7 mg/dL and PTH levels higher than 65 pg/mL were associated with the progression to ESRD and the composite outcome of ESRD or mortality after adjustments for age, sex, DM, BMI, serum albumin and eGFR ( $\geq 45$  or  $< 45$  mL/min/1.73 m<sup>2</sup>).

### Discussion

The present study evaluated mineral metabolism and the associations between mineral parameters and outcomes of ESRD and mortality in CKD stage 2–4 patients. High prevalence of hyperparathyroidism and 25-OH-D deficiency was observed in the early stages of CKD, whereas significant hyperphosphatemia only developed in the later stages. High-normal and mildly elevated serum phosphate predicted the composite outcome of ESRD or mortality. Mildly elevated PTH levels above the upper limit of normal were associated with the development of ESRD and the composite outcome of ESRD or mortality.

Hyperphosphatemia is a well-known risk factor for mortality in ESRD patients [2,10–13]. Less data is available in the non-dialysis CKD population. In early stages of CKD, serum phosphate levels are mostly within the normal range owing to augmented renal phosphate excretion as a result of the release of at least 2 phosphaturic hormones:

**Table 2 Hazard ratios of ESRD**

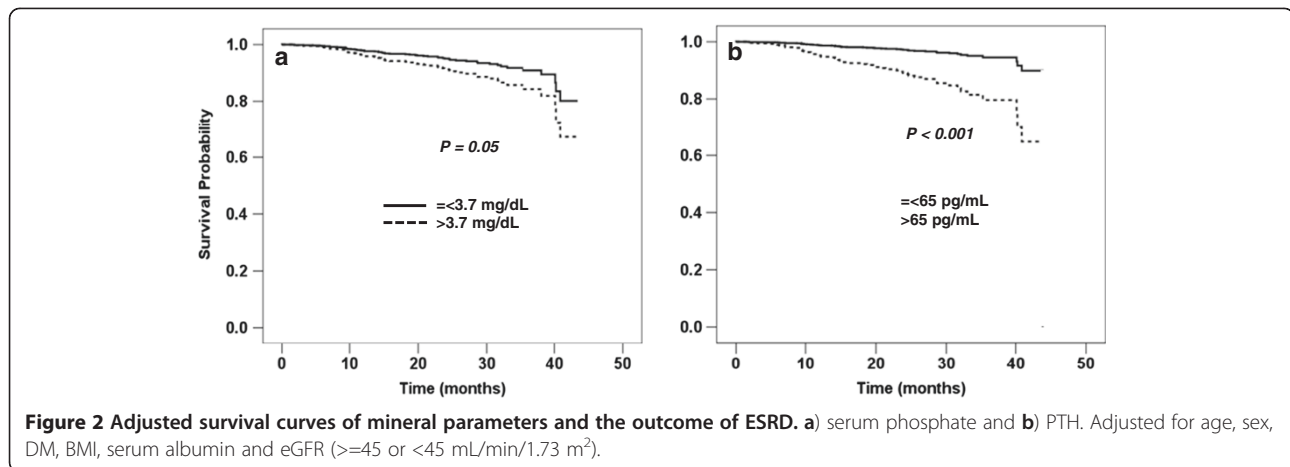
Parameters	Unadjusted	Model 1 <sup>a</sup>	Model 2 <sup>b</sup>
Phosphate <sup>d</sup> (mg/dL)			
0-3.7	1 (reference)	1 (reference)	1 (reference)
3.7-4.2	2.04 (1.13-3.7)*	1.53 (0.77-3.03)	1.81 (0.86-3.81)
>4.2	4.56 (2.59-8.03)*	2.38 (1.21-4.68)*	1.98 (0.92-4.28)
PTH <sup>e</sup> (pg/mL)			
1-42	1 (reference)	1 (reference)	1 (reference)
42-65	12.7 (1.65-97.5)*	5.73 (0.7-46.6)	5.66 (0.69-46.2)
65-105	13.2 (1.74-99.9)*	8.6 (1.09-67.7)*	8.77 (1.12-68.8)*
>105	51.4 (7.08-374)*	20.8 (2.75-158)*	16.5 (2.18-125)*
25-OH-D <sup>f</sup> (ng/mL)			
>30	1 (reference)	1 (reference)	1 (reference)
15-30	1.84 (0.78-4.34)	3.64 (0.86-15.4)	3.33 (0.78-14.1)
<15	4.07 (1.67-9.92)*	6.82 (1.52-30.6)*	5.73 (1.27-26)*

<sup>a</sup>adjusted for age, sex, DM, BMI, serum albumin and eGFR ( $\geq 45$  or  $< 45$  mL/min/1.73 m<sup>2</sup>), <sup>b</sup>Model 1 further adjusted for other mineral parameters in this table. <sup>d</sup>normal values 2.5-4.6 mg/dL. <sup>e</sup>normal values 15-65 pg/mL, <sup>f</sup>normal values  $\geq 20$  ng/mL. \* $P < 0.05$ .

**Table 3 Hazard ratios of the composite outcome of ESRD or mortality**

Parameters	Unadjusted	Model 1 <sup>a</sup>	Model 2 <sup>b</sup>
Phosphate <sup>d</sup> (mg/dL)			
0-3.7	1 (reference)	1 (reference)	1 (reference)
3.7-4.2	1.67 (1.03-2.7)*	1.45 (0.82-2.55)	1.5 (0.82-2.74)
>4.2	3.51 (2.21-5.57)*	2.31 (1.31-4.05)*	2.01 (1.08-3.74)*
PTH <sup>e</sup> (pg/mL)			
1-42	1 (reference)	1 (reference)	1 (reference)
42-65	2.22 (1.01-4.92)*	2.28 (0.79-6.56)	2.3 (0.8-6.63)
65-105	2.13 (0.98-4.64)	3.38 (1.22-9.39)*	3.54 (1.27-9.87)*
>105	7.16 (3.52-14.5)*	6.81 (2.52-18.4)*	6.04 (2.23-16.4)*
25-OH-D <sup>f</sup> (ng/mL)			
>30	1 (reference)	1 (reference)	1 (reference)
15-30	1.27 (0.7-2.31)	2.25 (0.88-5.71)	2.13 (0.84-5.43)
<15	2.28 (1.19-4.37)*	3.27 (1.19-8.96)*	2.85 (1.03-7.84)*

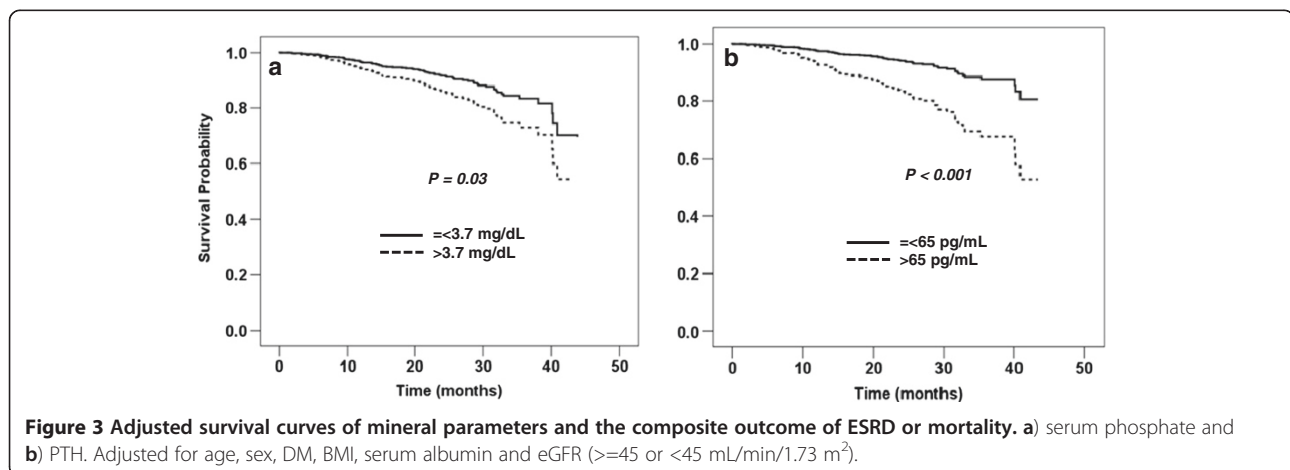
<sup>a</sup>adjusted for age, sex, DM, BMI, serum albumin and eGFR ( $\geq 45$  or  $< 45$  mL/min/1.73 m<sup>2</sup>), <sup>b</sup>Model 1 further adjusted for other mineral parameters in this table. <sup>d</sup>normal values 2.5-4.6 mg/dL. <sup>e</sup>normal values 15-65 pg/mL, <sup>f</sup>normal values  $\geq 20$  ng/mL. \* $P < 0.05$ .



PTH and FGF-23 [5,14]. In the present study, CKD patients developed hyperparathyroidism starting from stage 2. By the time they reached stage 4, hyperparathyroidism occurred in almost 80% of the patients. Previous studies have also demonstrated the appearance of hyperparathyroidism as early as eGFR 70–80 mL/min, whereas hyperphosphatemia only became pronounced once eGFR fell below 40–50 mL/min [4,5,15].

In the present study, patients who belonged to the highest tertile of serum phosphate ( $> 4.2$  mg/dL) had an increased risk of ESRD and mortality. Since only 7.7% of the population were hyperphosphatemic, most patients who belonged to this highest tertile of serum phosphate actually had serum phosphate within the normal range. Moreover, when the patients were divided according to the median serum phosphate of 3.7 mg/dL, those with serum phosphate greater than 3.7 mg/dL had a greater risk of progression to ESRD and mortality. This data suggests that a state of phosphate retention that began long before hyperphosphatemia posed a significant risk to patient outcomes. This finding is in agreement with the results from prior studies. Kestenbaum et al.

reported that serum phosphate higher than 3.5 mg/dL was associated with an increase in all-cause mortality [6]. Bellasi et al. observed an association between serum phosphate  $\geq 4.3$  mg/dL and the risk of starting dialysis or dying [16]. Higher serum phosphate concentrations within the normal range were also associated with a more rapid decline in renal function and a progression to ESRD [8]. The evidence of a relationship between increasing serum phosphate and adverse patient outcomes has been observed in subjects without CKD. In patients with CVD, serum phosphate 3.5 mg/dL or higher was associated with an increased risk of death compared to serum phosphate lower than 3.5 mg/dL [17]. In type 2 diabetes, serum phosphate greater than 3.9 mg/dL was associated an increase in cardiovascular mortality [18]. In community dwelling non-CKD, non-CVD adults, higher serum phosphate increased CVD risks after a follow-up period of over 10 years [19,20]. Whether an association between phosphate load and worse outcomes is the result of a direct or indirect effect of phosphate will require further study. Previous studies have demonstrated that a high phosphate environment could induce



endothelial cell apoptosis in vitro, and oral phosphate load in healthy volunteers resulted in a decrease in flow-mediated arterial dilatation indicating an impairment of endothelial function [21,22]. Higher serum phosphate levels in non-dialysis CKD patients were found to be associated with increased levels of c-reactive protein and inflammatory cytokines [23]. In subjects with preserved renal function, increased serum phosphate was associated with the presence of calcified coronary atherosclerotic plaque [24].

As mentioned earlier, in the course of CKD, PTH and FGF-23 levels become elevated prior to the development of hyperphosphatemia. An increase in FGF-23 levels has been shown to predict all-cause and cardiovascular mortality in both dialysis and non-dialysis CKD populations [25,26]. Limited data is available regarding the relationship between PTH and outcomes especially in the early stages of CKD. In ESRD, markedly elevated PTH concentrations (>450-600 pg/mL) predicted worse outcomes, whereas a more modest increase did not [2,3,11,13]. In the present study, an increase in PTH levels just above the upper limit of normal (>65 pg/mL) predicted the future development of ESRD and mortality independent of CVD risks and other mineral parameters. There was only one other study in male non-dialysis CKD patients that reported an association between mildly elevated PTH levels and the risk of mortality [27]. While the data on FGF-23 and renal and cardiovascular outcomes continue to accumulate, the link between excess PTH and adverse patient outcomes beyond the musculoskeletal system has not been emphasized [26,28-30]. It has been suggested that, in general population, an increase in PTH above the normal limit in association with low 25-OH-D levels predicted the development of sudden cardiac death 14 years later [31]. Serum PTH also correlated with an increase in systolic and diastolic blood pressure, and patients with mild primary hyperparathyroidism exhibited increased arterial stiffness [32,33]. Heightened activity of renin-angiotensin-aldosterone system was proposed to be the link between PTH and adverse patient outcomes [34]. The relationship between 25-OH-D deficiency and worse renal and patient outcomes in CKD patients not yet on dialysis has been documented previously [35-37]. Similar results are also observed in the present study.

The present study has some limitations. The relatively low number of patients and low event rates may impact the study models. FGF-23 levels were not determined precluding an assessment of the effect of FGF-23 on outcomes. As renal function deteriorates, mineral parameters change overtime and, the use of time-dependent covariates may be more appropriate in this setting. The present study is observational in nature and some laboratory data were not available during the follow-up period. Nevertheless, the outcome data including renal

function was obtained in 98% of the patients and mortality data was available in all patients.

## Conclusions

In conclusion, hyperparathyroidism developed prior to significant hyperphosphatemia confirming the presence of phosphate retention in the early stages of CKD. High-normal serum phosphate and mildly elevated PTH levels predicted the future development of ESRD and mortality in CKD stage 2-4 patients.

## Competing interests

Sinee Distha-Banchong has received speaker's honoraria from Fresenius-Kabi and Sanofi. No financial competing interest.

## Authors' contributions

KC, AI and MA collected and analyzed the data and drafted and revised the manuscript. KV, AN, SD and VS collected the data, provided clinical experience and revised the manuscript. SDB conceptualized and designed the research, collected and analyzed the data, and drafted and revised the manuscript. All authors read and approved the final manuscript.

## Acknowledgements

We would like to acknowledge Dr Ammarin Thakkinian for assisting in statistical analyses and Dr Paul Edwards for assisting in editing the manuscript. This study was supported by grants from the Faculty of medicine, Ramathibodi Hospital, Mahidol University and the National Kidney Foundation of Thailand.

Received: 21 June 2012 Accepted: 8 January 2013

Published: 16 January 2013

## References

1. Hemmelgarn BR, Manns BJ, Lloyd A, James MT, Klarenbach S, Quinn RR, Wiebe N, Tonelli M, Alberta Kidney Disease N: **Relation between kidney function, proteinuria, and adverse outcomes.** *JAMA* 2010, **303**(5):423-429.
2. Block GA, Klassen PS, Lazarus JM, Ofsthun N, Lowrie EG, Chertow GM: **Mineral metabolism, mortality, and morbidity in maintenance hemodialysis.** *J Am Soc Nephrol* 2004, **15**(8):2208-2218.
3. Floege J, Kim J, Ireland E, Chazot C, Druke T, de Francisco A, Kronenberg F, Marcelli D, Passlick-Deetjen J, Scherthaner G, et al: **Serum iPTH, calcium and phosphate, and the risk of mortality in a European haemodialysis population.** *Nephrol Dial Transplant* 2011, **26**(6):1948-1955.
4. Levin A, Bakris GL, Molitch M, Smulders M, Tian J, Williams LA, Andress DL: **Prevalence of abnormal serum vitamin D, PTH, calcium, and phosphorus in patients with chronic kidney disease: results of the study to evaluate early kidney disease.** *Kidney Int* 2007, **71**(1):31-38.
5. Isakova T, Wahl P, Vargas GS, Gutierrez OM, Scialla J, Xie H, Appleby D, Nessel L, Bellovich K, Chen J, et al: **Fibroblast growth factor 23 is elevated before parathyroid hormone and phosphate in chronic kidney disease.** *Kidney Int* 2011, **79**(12):1370-1378.
6. Kleenbaum B, Sampson JN, Rudser KD, Patterson DJ, Seliger SL, Young B, Sherrard DJ, Andress DL: **Serum phosphate levels and mortality risk among people with chronic kidney disease.** *J Am Soc Nephrol* 2005, **16**(2):520-528.
7. Seiler S, Reichart B, Roth D, Seibert E, Fliser D, Heine GH: **FGF-23 and future cardiovascular events in patients with chronic kidney disease before initiation of dialysis treatment.** *Nephrol Dial Transplant* 2010, **25**(12):3983-3989.
8. Voormolen N, Noordzij M, Grootendorst DC, Beetz I, Sijpkens YW, van Manen JG, Boeschoten EW, Huisman RM, Krediet RT, Dekker FW, et al: **High plasma phosphate as a risk factor for decline in renal function and mortality in pre-dialysis patients.** *Nephrol Dial Transplant* 2007, **22**(10):2909-2916.
9. Praditpornsilpa K, Townamchai N, Chaiwatanarat T, Tiranathanagul K, Katawatin P, Susantitaphong P, Trakarnvanich T, Kanjanabuch T, Avihingsanon Y, Tungsanga K, et al: **The need for robust validation for MDRD-based glomerular filtration rate estimation in various CKD populations.** *Nephrol Dial Transplant* 2011, **26**(9):2780-2785.

10. Block GA, Hulbert-Shearon TE, Levin NW, Port FK: **Association of serum phosphorus and calcium x phosphate product with mortality risk in chronic hemodialysis patients: a national study.** *Am J Kidney Dis* 1998, **31**(4):607–617.
11. Slinin Y, Foley RN, Collins AJ: **Calcium, phosphorus, parathyroid hormone, and cardiovascular disease in hemodialysis patients: the USRDS waves 1, 3, and 4 study.** *J Am Soc Nephrol* 2005, **16**(6):1788–1793.
12. Young EW, Albert JM, Satayathum S, Goodkin DA, Pisoni RL, Akiba T, Akizawa T, Kurokawa K, Bommer J, Pira L, et al: **Predictors and consequences of altered mineral metabolism: the Dialysis Outcomes and Practice Patterns Study.** *Kidney Int* 2005, **67**(3):1179–1187.
13. Covic A, Kothawala P, Bernal M, Robbins S, Chalian A, Goldsmith D: **Systematic review of the evidence underlying the association between mineral metabolism disturbances and risk of all-cause mortality, cardiovascular mortality and cardiovascular events in chronic kidney disease.** *Nephrol Dial Transplant* 2009, **24**(5):1506–1523.
14. Gutierrez O, Isakova T, Rhee E, Shah A, Holmes J, Collerone G, Juppner H, Wolf M: **Fibroblast growth factor-23 mitigates hyperphosphatemia but accentuates calcitriol deficiency in chronic kidney disease.** *J Am Soc Nephrol* 2005, **16**(7):2205–2215.
15. Muntner P, Vupputuri S, Coresh J, Uribarri J, Fox CS: **Metabolic abnormalities are present in adults with elevated serum cystatin C.** *Kidney Int* 2009, **76**(1):81–88.
16. Bellasi A, Mandreoli M, Baldrati L, Corradini M, Di Nicolo P, Malmusi G, Santoro A: **Chronic kidney disease progression and outcome according to serum phosphorus in mild-to-moderate kidney dysfunction.** *Clin J Am Soc Nephrol* 2011, **6**(4):883–891.
17. Tonelli M, Sacks F, Pfeffer M, Gao Z, Curhan G: **Cholesterol, Recurrent Events Trial I: Relation between serum phosphate level and cardiovascular event rate in people with coronary disease.** *Circulation* 2005, **112**(17):2627–2633.
18. Chonchol M, Dale R, Schrier RW, Estacio R: **Serum phosphorus and cardiovascular mortality in type 2 diabetes.** *Am J Med* 2009, **122**(4):380–386.
19. Dhingra R, Sullivan LM, Fox CS, Wang TJ, D'Agostino RB Sr, Gaziano JM, Vasan RS: **Relations of serum phosphorus and calcium levels to the incidence of cardiovascular disease in the community.** *Arch Intern Med* 2007, **167**(9):879–885.
20. Foley RN, Collins AJ, Ishani A, Kalra PA: **Calcium-phosphate levels and cardiovascular disease in community-dwelling adults: the Atherosclerosis Risk in Communities (ARIC) Study.** *Am Heart J* 2008, **156**(3):556–563.
21. Di Marco GS, Hausberg M, Hillebrand U, Rustemeyer P, Wittkowski W, Lang D, Pavenstadt H: **Increased inorganic phosphate induces human endothelial cell apoptosis in vitro.** *Am J Physiol Renal Physiol* 2008, **294**(6):F1381–F1387.
22. Shuto E, Taketani Y, Tanaka R, Harada N, Isshiki M, Sato M, Nashiki K, Amo K, Yamamoto H, Higashi Y, et al: **Dietary phosphorus acutely impairs endothelial function.** *J Am Soc Nephrol* 2009, **20**(7):1504–1512.
23. Navarro-Gonzalez JF, Mora-Fernandez C, Muros M, Herrera H, Garcia J: **Mineral metabolism and inflammation in chronic kidney disease patients: a cross-sectional study.** *Clin J Am Soc Nephrol* 2009, **4**(10):1646–1654.
24. Shin S, Kim KJ, Chang HJ, Cho I, Kim YJ, Choi BW, Rhee Y, Lim SK, Yang WI, Shim CY, et al: **Impact of serum calcium and phosphate on coronary atherosclerosis detected by cardiac computed tomography.** *Eur Heart J* 2012, **33**(22):2873–2881.
25. Gutierrez OM, Mannstadt M, Isakova T, Rauh-Hain JA, Tamez H, Shah A, Smith K, Lee H, Thadhani R, Juppner H, et al: **Fibroblast growth factor 23 and mortality among patients undergoing hemodialysis.** *N Engl J Med* 2008, **359**(6):584–592.
26. Isakova T, Xie H, Yang W, Xie D, Anderson AH, Scialla J, Wahl P, Gutierrez OM, Steigerwalt S, He J, et al: **Fibroblast growth factor 23 and risks of mortality and end-stage renal disease in patients with chronic kidney disease.** *JAMA* 2011, **305**(23):2432–2439.
27. Kovesdy CP, Ahmadzadeh S, Anderson JE, Kalantar-Zadeh K: **Secondary hyperparathyroidism is associated with higher mortality in men with moderate to severe chronic kidney disease.** *Kidney Int* 2008, **73**(11):1296–1302.
28. Fliser D, Kollerits B, Neyer U, Ankerst DP, Lhotta K, Lingenhel A, Ritz E, Kronenberg F, Kuen E, Konig P, et al: **Fibroblast growth factor 23 (FGF23) predicts progression of chronic kidney disease: the Mild to Moderate Kidney Disease (MMKD) Study.** *J Am Soc Nephrol* 2007, **18**(9):2600–2608.
29. Gutierrez OM, Januzzi JL, Isakova T, Laliberte K, Smith K, Collerone G, Sarwar A, Hoffmann U, Coglianese E, Christenson R, et al: **Fibroblast growth factor 23 and left ventricular hypertrophy in chronic kidney disease.** *Circulation* 2009, **119**(19):2545–2552.
30. Parker BD, Schurgers LJ, Brandenburg VM, Christenson RH, Vermeer C, Ketteler M, Shlipak MG, Whooley MA, Ix JH: **The associations of fibroblast growth factor 23 and uncarboxylated matrix Gla protein with mortality in coronary artery disease: the Heart and Soul Study.** *Ann Intern Med* 2010, **152**(10):640–648.
31. Deo R, Katz R, Shlipak MG, Sotoodehnia N, Psaty BM, Sarnak MJ, Fried LF, Chonchol M, de Boer IH, Enquobahrie D, et al: **Vitamin D, parathyroid hormone, and sudden cardiac death: results from the Cardiovascular Health Study.** *Hypertension* 2011, **58**(6):1021–1028.
32. Morfis L, Smerdely P, Howes LG: **Relationship between serum parathyroid hormone levels in the elderly and 24 h ambulatory blood pressures.** *J Hypertens* 1997, **15**(11):1271–1276.
33. Rubin MR, Maurer MS, McMahon DJ, Bilezikian JP, Silverberg SJ: **Arterial stiffness in mild primary hyperparathyroidism.** *J Clin Endocrinol Metab* 2005, **90**(6):3326–3330.
34. Tomaschitz A, Ritz E, Pieske B, Fahrleitner-Pammer A, Kienreich K, Horina JH, Drechsler C, Marz W, Ofner M, Pieber TR, et al: **Aldosterone and parathyroid hormone: a precarious couple for cardiovascular disease.** *Cardiovasc Res* 2012, **94**(1):10–19.
35. Mehrotra R, Kermah DA, Salusky IB, Wolf MS, Thadhani RI, Chiu YW, Martins D, Adler SG, Maurer MS, Norris KC: **Chronic kidney disease, hypovitaminosis D, and mortality in the United States.** *Kidney Int* 2009, **76**(9):977–983.
36. Navaneethan SD, Schold JD, Arrigain S, Jolly SE, Jain A, Schreiber MJ Jr, Simon JF, Srinivas TR, Nally JV Jr: **Low 25-hydroxyvitamin D levels and mortality in non-dialysis-dependent CKD.** *Am J Kidney Dis* 2011, **58**(4):536–543.
37. Ravani P, Malberti F, Tripepi G, Pecchini P, Cutrupi S, Pizzini P, Mallamaci F, Zoccali C: **Vitamin D levels and patient outcome in chronic kidney disease.** *Kidney Int* 2009, **75**(1):88–95.

doi:10.1186/1471-2369-14-14

Cite this article as: Chartsrisak et al: Mineral metabolism and outcomes in chronic kidney disease stage 2–4 patients. *BMC Nephrology* 2013 **14**:14.

Submit your next manuscript to BioMed Central and take full advantage of:

- Convenient online submission
- Thorough peer review
- No space constraints or color figure charges
- Immediate publication on acceptance
- Inclusion in PubMed, CAS, Scopus and Google Scholar
- Research which is freely available for redistribution

Submit your manuscript at  
www.biomedcentral.com/submit

