

The influence of geographic and climate factors on the timing of dengue epidemics in Perú, 1994-2008

Chowell *et al.*

RESEARCH ARTICLE

Open Access

The influence of geographic and climate factors on the timing of dengue epidemics in Perú, 1994-2008

Gerardo Chowell^{1,2*}, Bernard Cazelles^{3,4}, H el ene Broutin^{2,5} and Cesar V Munayco⁶

Abstract

Background: Dengue fever is a mosquito-borne disease that affects between 50 and 100 million people each year. Increasing our understanding of the heterogeneous transmission patterns of dengue at different spatial scales could have considerable public health value by guiding intervention strategies.

Methods: Based on the weekly number of dengue cases in Perú by province, we investigated the association between dengue incidence during the period 1994-2008 and demographic and climate factors across geographic regions of the country.

Results: Our findings support the presence of significant differences in the timing of dengue epidemics between jungle and coastal regions, with differences significantly associated with the timing of the seasonal cycle of mean temperature.

Conclusions: Dengue is highly persistent in jungle areas of Perú where epidemics peak most frequently around March when rainfall is abundant. Differences in the timing of dengue epidemics in jungle and coastal regions are significantly associated with the seasonal temperature cycle. Our results suggest that dengue is frequently imported into coastal regions through infective sparks from endemic jungle areas and/or cities of other neighboring endemic countries, where propitious environmental conditions promote year-round mosquito breeding sites. If jungle endemic areas are responsible for multiple dengue introductions into coastal areas, our findings suggest that curtailing the transmission of dengue in these most persistent areas could lead to significant reductions in dengue incidence in coastal areas where dengue incidence typically reaches low levels during the dry season.

Keywords: Dengue, dynamics, community size, wavelet analysis, wavelet coherence, epidemic timing, climatic factors, Perú

Background

Dengue fever is the most prevalent vector borne disease in the Americas and the second most prevalent in the world after malaria with 50-100 million annual dengue infections in tropical and subtropical regions [1]. Dengue is caused by four serotypes (DENV-1, DENV-2, DENV-3, and DENV-4) of the genus *Flavivirus* [1] and is transmitted by the mosquito species *Aedes aegypti* and *Aedes*

albopictus. The severity of dengue disease ranges from asymptomatic, clinically non-specific with flu-like symptoms, dengue fever (DF), dengue hemorrhagic fever (DHF), and dengue shock syndrome (DSS) [1,2].

In Perú, dengue serotype DENV-1 was identified in 1990 [3], and it was followed by the invasion of American genotype DENV-2, responsible for the large dengue epidemic of 1995-1996 [4]. All four dengue serotypes co-circulated in Perú during the large epidemic of 2000-2001 (Asian DENV-2, DENV-3, and DENV-4 identified for the first time) [5] and were reported present in other countries of the region by 2000 [6].

* Correspondence: gchowell@asu.edu

¹Mathematical and Computational Modeling Sciences Center, School of Human Evolution and Social Change, Arizona State University, Tempe, AZ, USA

Full list of author information is available at the end of the article

Environmental factors (e.g., climatological, geographic) [7] and population mobility at different temporal and spatial scales [8] have been found to affect the spatio-temporal patterns of dengue transmission. For example, climatic conditions not only affect the development, maturation and survival of the vector *Ae. aegypti* [9-11] but also its role in dengue transmission. Specifically, the time for infected female mosquitoes to become infectious after biting an infectious individual (known as the extrinsic incubation period) is influenced by ambient temperature [12-14]. Moreover, the main dengue vector *Ae. aegypti* typically travels short distances [15], but human mobility patterns have been shown to contribute significantly to the heterogeneous transmission patterns of dengue at different spatial scales (community, provincial, regional) [8].

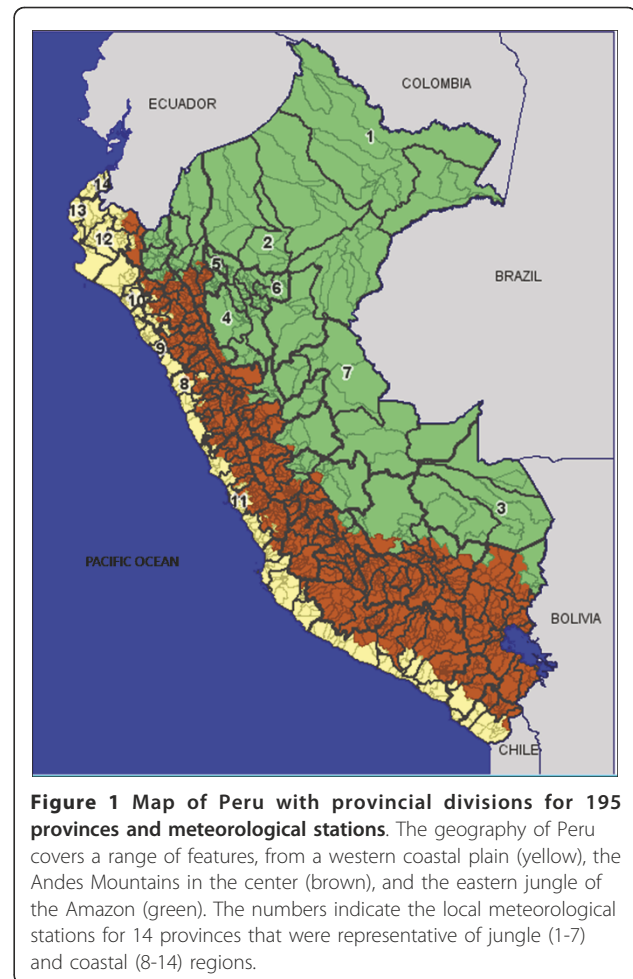
Achieving dengue eradication is a complex and challenging task. Mosquito eradication programs targeting *Ae. aegypti* in the Americas began in the 1950s and led to dramatic reductions in dengue incidence [16]. However, these programs were interrupted in the 1970s throughout the Americas facilitating dengue re-emergence in various regions of Central and South America with *Ae. aegypti* as the primary vector [16].

To date, there is no clinically efficient diagnostic test, drugs or vaccines available to date to fight dengue, and the epidemiology of the disease is still poorly understood [17,18]. Given these limitations, improving our understanding of the complex transmission dynamics of dengue at different spatial scales may be useful in the development and evaluation of alternative control measures [16,19-22]. For instance, the strategic allocation of limited resources for vector control programs could lead to improved control outcomes [23,24].

In this study we use spatial data of dengue incidence stratified by province and region as well as climate and demographic variables to study the transmission dynamics of dengue across the jungle, coast and mountain regions in Perú. In particular, dengue persists in the jungle region of Peru all year round and dengue outbreaks peak most frequently near March when rainfall is abundant. We explore the possibility that highly persistent jungle regions and cities of other dengue-endemic neighboring countries may be the source of outbreaks in coastal regions which are more likely to occur and become a public health concern during April-May right after the summer rain season.

Methods

Perú is a South American country located on the Pacific coast between the latitudes: -3 degrees S to -18 degrees S, sharing borders with Bolivia, Brazil, Chile, Colombia, and Ecuador (Figure 1). The population size is about 28 million heterogeneously distributed individuals over



1,285,220 km², including a western coastal plain, the eastern jungle of the Amazon and the Andes Mountains, which separates the coastal from the jungle region (Figure 1). Politically Perú is divided into 25 administrative regions composed of 195 provinces ranging in population size from 7000 to more than 7 million people [25].

Perú's weather varies from tropical to temperate. The jungle (rainforest) is dry but hot during the dry season (May-October) and wet and hot, from November to April with temperatures reaching 36°C and heavy rainfall that causes river flooding on the smaller tributaries [26]. The mountain range region also has a May-October dry season, but is characterized by clear, sunny days and cold nights. November-April is the rainy season, with heaviest rainfall during the months of January and February and a mild daytime temperature that drops at night. The coastal region has an April-November winter season, with cloudy and cool days, and a hot and dry summer during December-March. The northern coast typically has higher temperatures and rainfall in the summer.

Epidemiological Data

We obtained the weekly number of dengue cases at the province level during the period 1994-2008 from the Health Ministry's Dirección General de Epidemiología that is in charge of Perú's passive epidemiological surveillance system comprised of a network of over 7000 geographically distributed notifying units that includes 95% of the health centers. The surveillance network has collected weekly disease data reports since 1994 [27]. The case definitions for probable and confirmed dengue cases in use are those specified by the World Health Organization (WHO) guidelines [28] namely a dengue case was classified as probable whenever fever or chills were present in addition to at least two symptoms among myalgia, arthralgia, retro-orbital pain, headache, rash, or some hemorrhagic manifestation (e.g., petechiae, hematuria, hematemesis, melena). Seventy-nine out of one hundred and ninety-five provinces reported dengue cases sometime during the period of interest (1994-2008). Only eighteen percent of the probable dengue cases were confirmed via anti-dengue IgM antibody tests by the regional laboratories under the supervision of Perú's National Institute of Health.

Population, geographic, and climate data

Annual population size estimates of the Peruvian provinces during the years 1994-2008 were obtained from the National Institute of Statistics and Informatics [29]. Each province is classified according to its geographic location as coastal, mountain, or jungle area (Figure 1). Summary statistics for the population size and density and altitude of the 79 provinces examined in this study are given in Table 1. The population density of each province (people/km²) was estimated by dividing the province population size by the surface area (km²) [30]. The latitude and longitude coordinates of each province were also available [31]. Time series of the mean, minimum and maximum temperature and precipitation for the period of interest were obtained for 14 provinces according to existing local meteorological station coverage. But these data were representative of Coastal and Jungle regions (see Figure 1). We provide descriptive statistics of the climatic variables in jungle and coastal regions in Table 2.

Timing of dengue epidemics and persistence patterns

A dengue epidemic was defined conservatively as the occurrence of 5 or more dengue cases during three or

more consecutive weeks in a province, as used in a previous study [16]. This conservative definition was used to limit the confusion that results from imported cases (e.g., cases generated by humans visiting other provinces). Furthermore, cases considered to be part of an epidemic were recorded in a window of time bounded above and below by the absence of dengue cases for at least two consecutive weeks. We identified 380 dengue outbreaks in 1994-2008 as defined by this conservative definition. Furthermore, the total number of identified outbreaks was insensitive to the size of the threshold outbreak size. For each dengue epidemic, we computed the epidemic size (total number of dengue cases occurring during the epidemic) and the epidemic peak timing (week of the year at which the epidemic peak occurs).

We also explored the presence of a 'critical community size' [32] at the province level and across geographic regions above which dengue epidemics would typically take off. For this purpose, during the period of study, we quantified the relationship between population size and the proportion of weeks with dengue reports [16].

We scaled the dengue epidemics by their peak size in order to analyze the distribution of the timing of dengue epidemics throughout the years and across geographic regions. We studied the annual profiles of the average timing of dengue epidemics in jungle, coastal and mountain regions as well as the variability of the epidemic peak timing at the province level throughout the year during the study period.

To partially account for the introduction of new serotypes in Perú, two time periods were assessed in our analysis: 1994-1999 (1st time period) and 2000-2008 (2nd time period). These time periods correspond to the time intervals before and after all four dengue virus serotypes started to co-circulate in Perú [6].

Association between Dengue Activity and Variation in Temperature

We quantified the association between dengue activity and ambient temperature across geographic regions by correlating the mean temperature at week *i* with the number of dengue cases by date of symptoms onset at week *i*+ τ where τ is the natural time lag (in weeks) for changes in temperature to be reflected on dengue activity. This natural time lag accounts for the development,

Table 1 Summary statistics (median and range) of population size, population density (people/km²) and altitude of the provinces reporting dengue sometime during the study period (1994-2008) stratified by geographic region

Geographic region	Num. of Provinces	Population (median, range)	Population Density (median, range)	Altitude (median, range)
Jungle	28	64317 (7662, 503095)	7.9 (0.4, 38.0)	304 (124, 1835)
Mountain	25	62105 (18470, 285770)	20.7 (3.52, 91.4)	2294 (184, 4864)
Coast	26	130220 (15648, 6723130)	47.9 (7.4 - 5264)	192.5 (1, 4238)

Table 2 Summary statistics (mean and range) of the climate time series (1994-2008) using available province level data from jungle and coastal regions

Geographic region	Num. of Provinces	Mean Temp. (mean, range)	Min. Temp. (mean, range)	Max. Temp. (mean, range)	Precipitation
Jungle	7	26.6 (25.0, 27.7)	21.0 (19.0, 22.4)	31.9 (30.1, 33.5)	0.1 (0.03, 0.3)
Coast	7	22.1 (19.6, 25.8)	18.6 (16.3, 22.0)	26.8 (23.6, 30.8)	0.013 (0, 0.11)

maturation and survival of the vector *Ae. aegypti* [8-10] as well as the extrinsic incubation period in the vector and the intrinsic incubation period in the human host [1,3]. The average occurrence of dengue (N_T) in different temperature domains (T to $T+\Delta T$) by geographic region was calculated as follows [33]:

$$N_T = \frac{\sum_i^n C(i + \tau)f(t_i)}{\sum_i^n f(t_i)}$$

where i is an index for weeks during the study period from 0 to n , t_i the mean temperature for week i , $C(i)$ the total number of dengue cases at week i , and $f(t)$ a function which

$$\begin{cases} = 1 & \text{when } T < t_i < T + \Delta T \\ = 0 & \text{otherwise} \end{cases}$$

The numerator of the above ratio represents the sum of all dengue cases at week $i+\tau$ falling within the temperature domain T to $T+\Delta T$ at week i . The denominator is the total number of occasions with $T < t_i < T+\Delta T$ during the entire period of study. We set $\Delta T = 0.5^\circ\text{C}$. Our results were not sensitive to varying the time lag τ in range 1-3 weeks.

Wavelet time series analysis

Wavelet time series analysis can be used to disentangle the non-stationary temporal evolution of the periodic components in the incidence of infectious diseases and periodic components of phenomena in other ecological systems (e.g., [19,21,34]). Here we use wavelet analysis (wavelet power spectrum, oscillations in a given periodic band, wavelet coherency) to investigate variations in the dominant periodic cycles across the time series of dengue by geographic region, quantify the non-stationary relationship between dengue time series and climate variables through wavelet coherence analysis and compute the instantaneous time lag between two time series (Additional file 1). These wavelet analyses have been performed using the Morlet wavelet as in previous studies [21,34,35]. Weekly time series were square root transformed to manage the variability in the amplitude of the time series [21,35,36] and statistically significance levels were determined using a 'beta surrogate' test as described in [37]. We performed the wavelet time series

analyses using well-established algorithms implemented in Matlab (The Mathworks, Inc.)[21].

Results

Characteristics of dengue epidemics

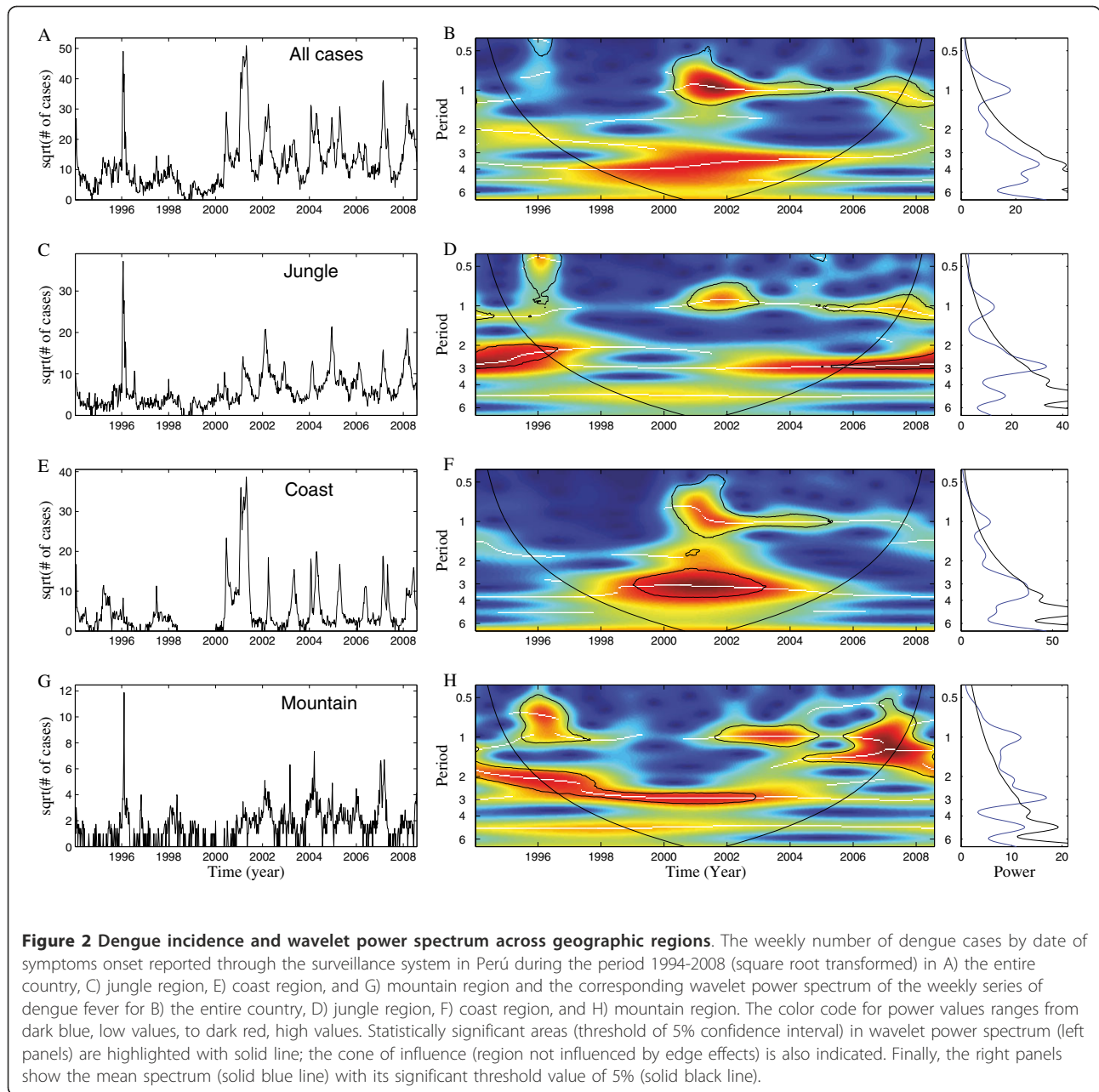
A total of 86,631 dengue cases were reported during the 15-year study period. The aggregated epidemic curve shows a high degree of non-stationarity (Figure 2A). Wavelet time series analysis indicated a strong annual component around the time when all four dengue virus serotypes started to co-circulate in Perú (2000-2001) and a significant 3-4 y periodic component during 1998-2004 (Figure 2B).

Most of the dengue cases during the study period were reported in the jungle and coastal regions (47% and 49%, respectively) while only 4% of the dengue cases were reported in the mountain region. The amplitude of dengue epidemics at the province level in Perú is highly irregular across jungle, mountain and coastal regions (Additional file 2, Figures S1, S2 and S3). Epidemics in jungle regions often peak before those in the coastal regions by a few weeks and most notably after the large epidemics of 2000-2001 when all four dengue virus serotypes started to co-circulate in Perú (Figure 2C-H).

Wavelet time series analysis by geographic region revealed significant periodicity of 1-yr and 2-3 yr components (Figure 2D, F, H), which is in broad agreement with the periodicity range of the dynamics of dengue hemorrhagic fever in Thailand [19,21]. Moreover, the time span over which these patterns were statistically significant varied across geographic regions. The jungle region is dominated by a significant 1 yr component after 2000, the mountain province shows a significant 2-3 yr component before 2003 and a significant 1 yr component after 2003, and the Coastal region is characterized by both a significant 1 yr and a 3 yr components but just for the time period 2000-2003 (Figure 2D, F, H). Interestingly, a highly significant 0.5-1 yr component exists for each large epidemic associated with single or multiple serotype introductions, in 1996 for jungle and mountain regions and in 2001 for the coastal region (Figure 2D, F, H).

Persistence patterns

Dengue is most persistent in jungle populations with dengue reports for 94.23% of the weeks of the study



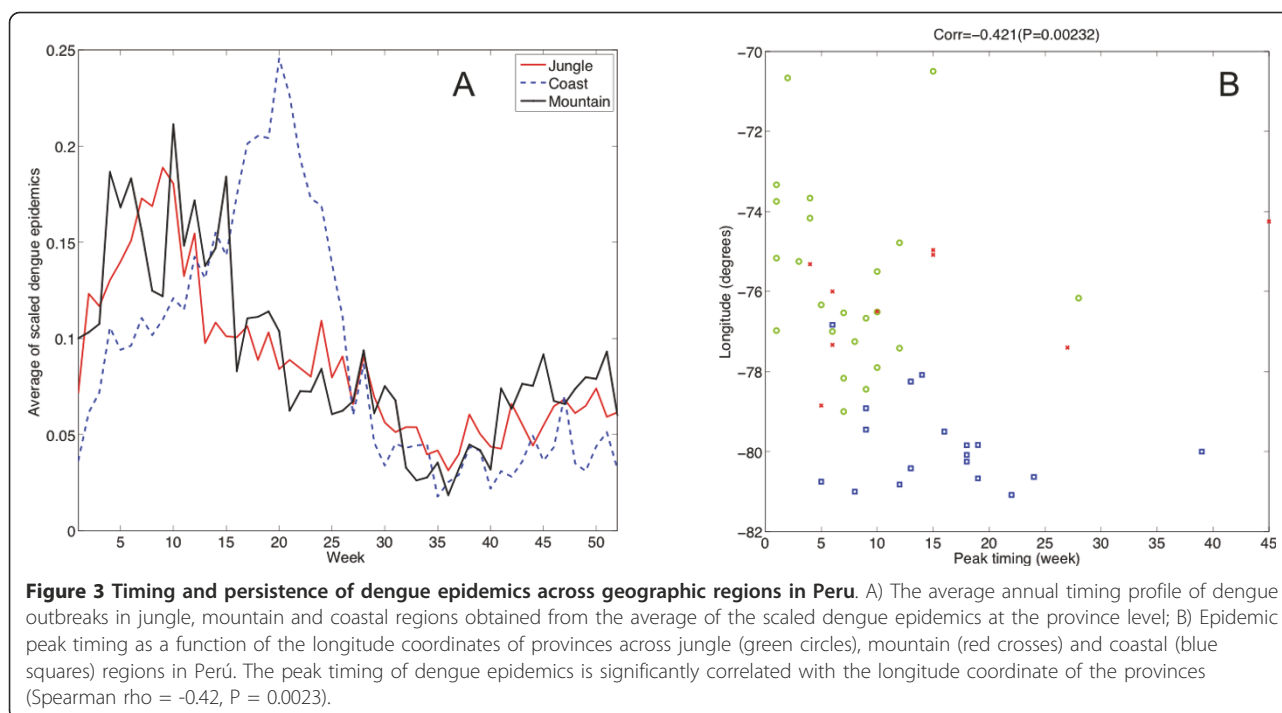
period (1994-2008). Coastal and mountain regions report dengue cases for 78% and 69% of the weeks of the study period (1994-2008), respectively. At the finer scale of provinces in jungle regions, we found the provinces of Alto Amazonas and Atalaya had the highest dengue persistence levels, with dengue reports for 82.7% and 64.5% of the weeks of the study period (1994-2008), respectively.

Dengue persistence in jungle provinces was positively correlated with population size (Spearman rho = -0.75, $P < 0.0001$, Additional file 2, Figure S4), suggesting the presence of a critical community size. Specifically, less

than 30% of the weekly records had zero dengue incidences whenever the population was greater than 500,000 people [16].

Temporal distribution of epidemics

The annual timing profile of dengue across geographic regions showed that epidemics in the jungle and mountain regions peak prior to those in the coastal regions by about 6 weeks on average (Figure 3A, Additional file 2, Figure S5), with significant variability of the epidemic peak timing throughout the year and across provinces during the entire study period (Figures 4) or during



2000-2008, when all four dengue serotypes started to co-circulate in Perú (Figure 4). Most epidemics peaked earlier in the jungle and a few weeks later in the coastal provinces. This finding was reinforced by studying the relationship between the average epidemic peak timing across provinces as one “moves” from jungle provinces to mountain and coastal provinces (see map in Figure 1). For this purpose, we used the longitude coordinate of each of the relevant provinces as a spatial proxy. We found the average timing of epidemic peaks to be moderately correlated with the corresponding longitude coordinate of the provinces (Spearman rho = -0.42, P = 0.0023, Figure 3B). This relationship was only statistically significant during the study period when all four dengue serotypes started to co-circulate in Perú (2000-2008), but it was not significant during the first 6 years of the study period (1994-1999, Additional file 2, Figure S6). Our findings indicated that dengue epidemics in Perú peak most frequently around March in jungle provinces while epidemics peak most frequently during April-May in coastal provinces (Additional file 2, Figure S7).

Periodicity and synchronization of dengue incidence across geographic regions

The analysis of wavelet coherence between the epidemics in the 3 regions revealed that the main significant coherence is for seasonal components (Figures 5A-5C). Next, we computed the oscillating components of the time series of the weekly dengue incidence in the 3 regions for the 0.8-1.2 yr band and also the

instantaneous delay in the timing between these oscillating components in the 3 regions (Figures 5D-5F). Specifically this analysis shows for the seasonal component, the instantaneous time between the oscillating components in jungle and mountain regions varied with no delay on average (amplitude between plus or minus 6 weeks) underlying the synchronicity of the dengue epidemics in these regions (Figure 5D). Interestingly, our results also show that this instantaneous time between the oscillating components in jungle and coastal regions varied between 3 and 12 weeks within the period of high coherence that started near year 2000 (Figure 5F).

Association of timing of epidemics with climate factors

We hypothesized that the differences in the timing of dengue epidemics between jungle and coastal regions could be significantly associated with local climate (Figure 6). The wavelet coherence analysis of mean temperature and precipitation between jungle and coastal regions revealed that the main significant coherence occurred for the seasonal component for mean temperature, but the coherence pattern for the precipitation time series was less clear (Figures S8A-S8C).

The instantaneous delay of the oscillating components of the time series of the weekly mean temperature for jungle and coastal regions in the 0.8-1.2 yr band varied consistently between 7-13 weeks (Additional file 2, Figure S8B). For precipitation the instantaneous time delay of the time series fluctuated over the study period from 0 to 6 weeks (Additional file 2, Figure S8D). Next, we

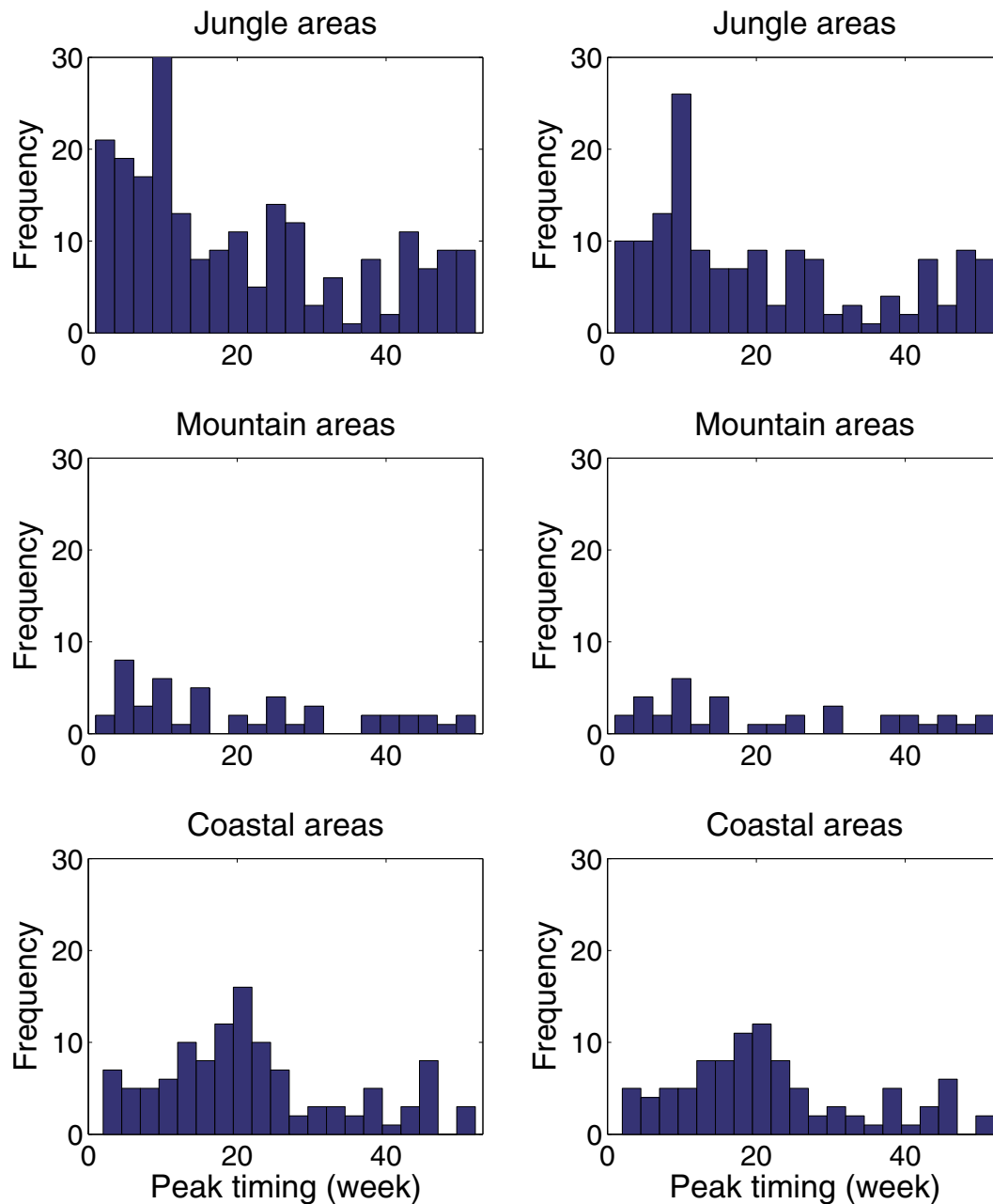


Figure 4 Timing of dengue epidemics across geographic regions. Left panels show the distribution of the peak timing of dengue outbreaks during the entire study period (1994-2008) and right panels show the distribution of the peak timing of dengue outbreaks occurring after 2000 when all four dengue virus serotypes started to co-circulate in Peru.

analyzed the correlation and the coherence patterns between dengue incidence and mean temperature and precipitation. The average occurrence of dengue as a function of mean temperature domains (N_T) revealed a

strong association of these variables in both jungle (Spearman rho = 0.83, $P = 0.005$; Figure 7A) and coastal regions (Spearman rho = 0.95, $P < 0.0002$; Figure 7B). The coherence analysis indicated that the main

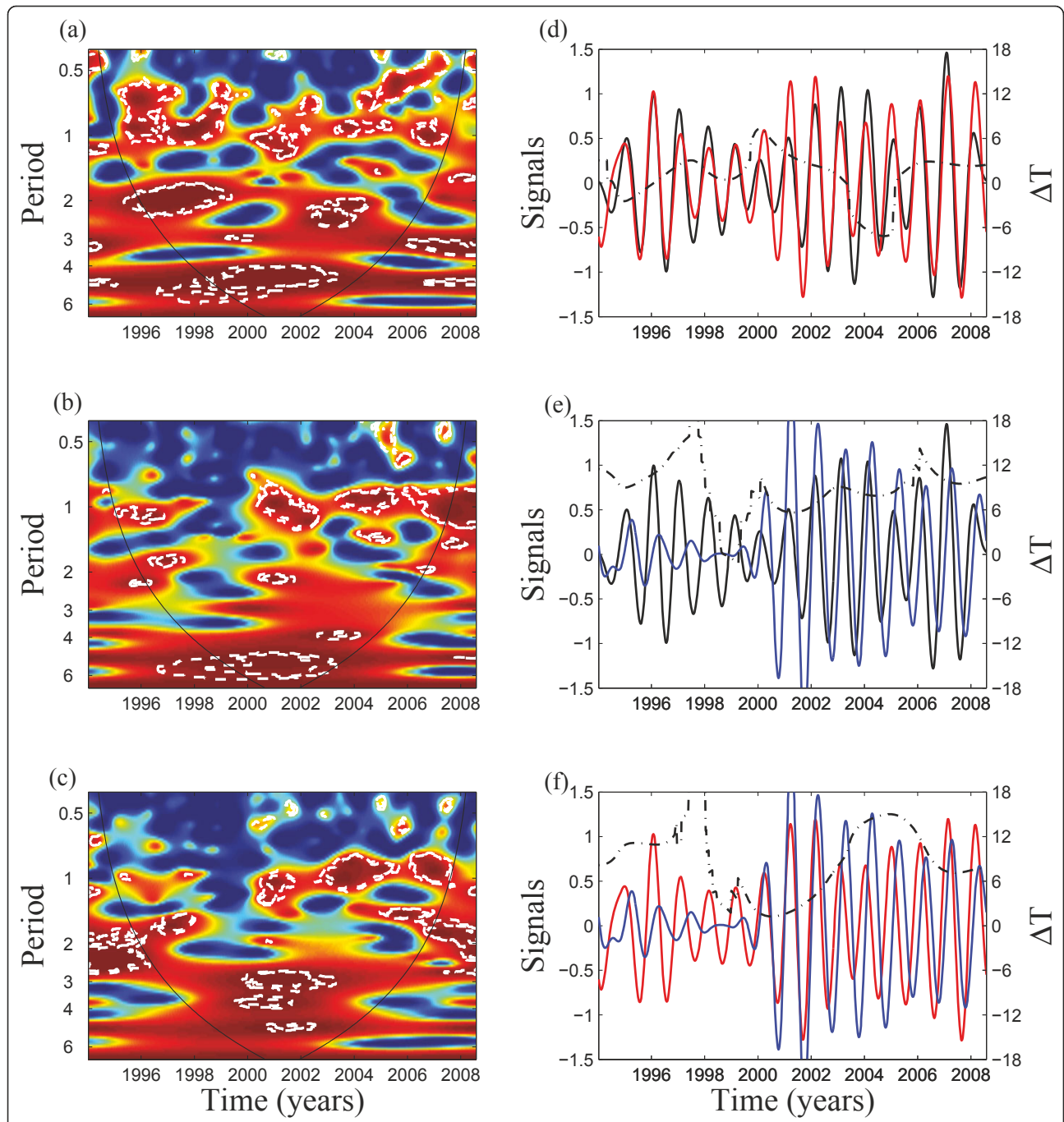
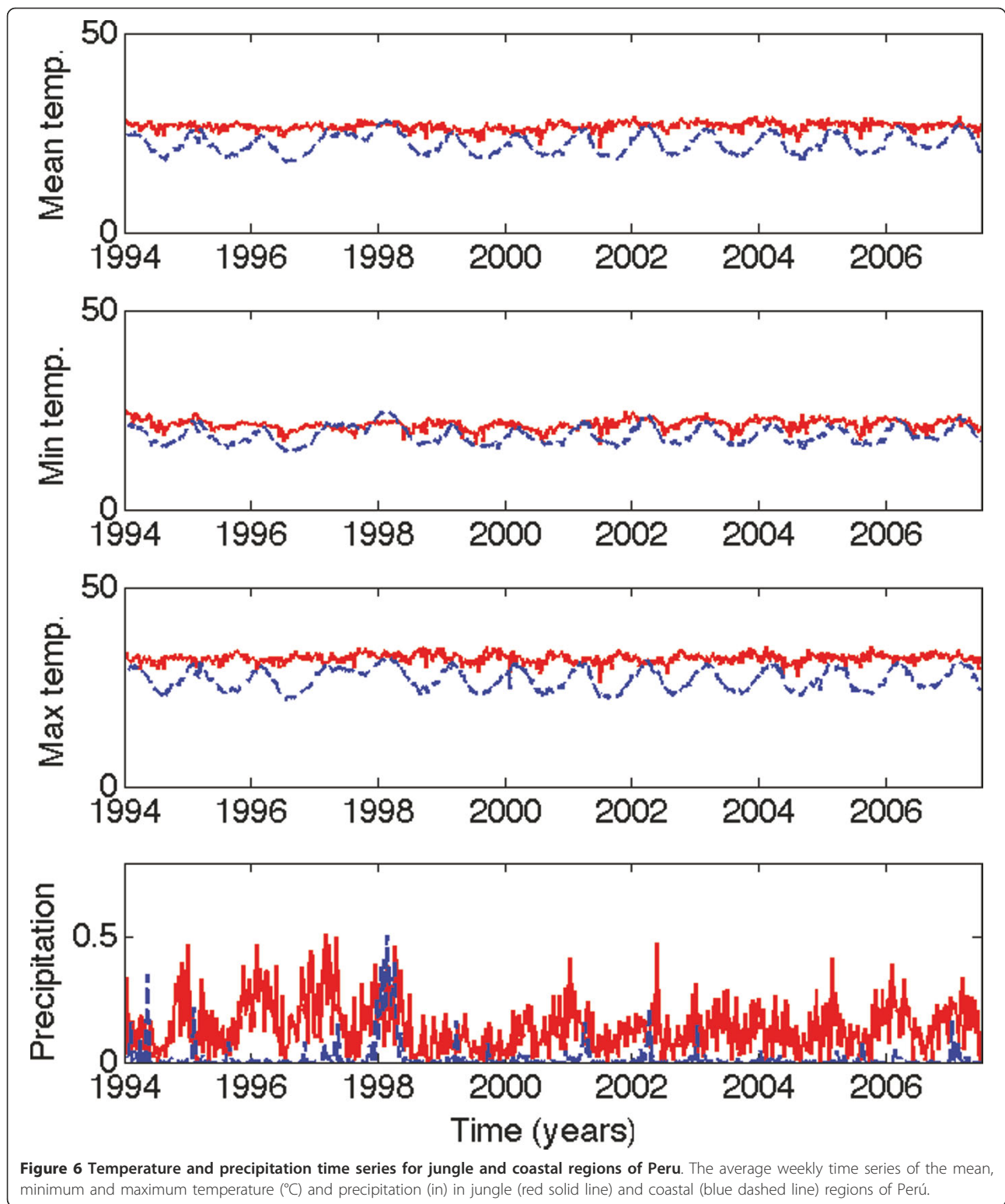
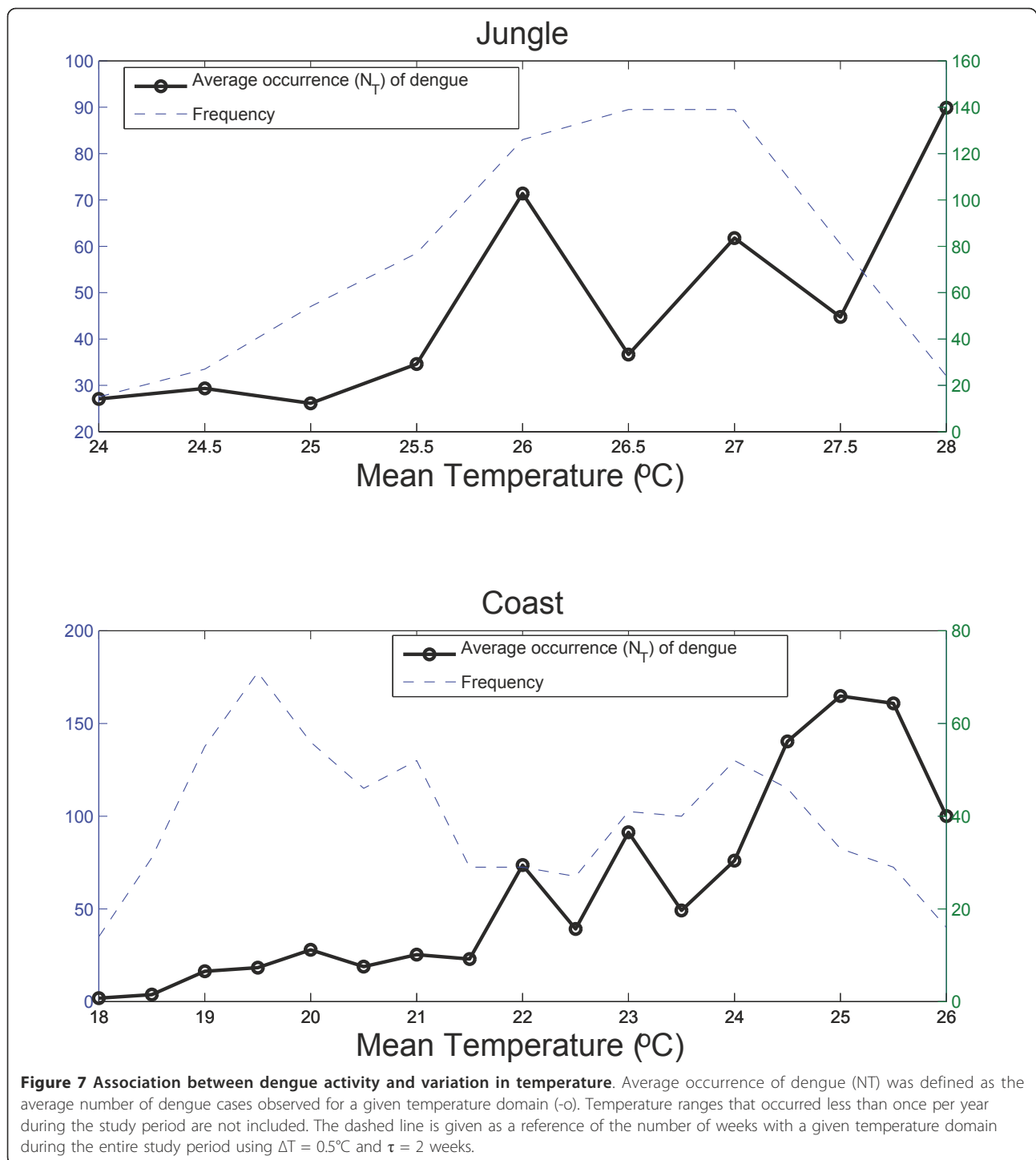


Figure 5 The synchronization of dengue incidence across geographic regions of Perú. Left panels show the wavelet coherence computed using the Morlet wavelet function from the weekly dengue incidence between jungle and mountain regions (a), mountain and coastal regions (b) and jungle and coastal regions (c), respectively. The colours are coded a dark blue, low coherence and dark red, high coherence. The dotted-dashed lines show 5% significance levels computed from 1000 bootstrapped series. The cone of influence indicates the region not influenced by edge effects. Right panels show the corresponding oscillating components computed with the wavelet transform in the 0.8-1.2 yr band for (d) jungle (red line) and mountain regions (black line), (e) mountain and coastal regions (blue line), and (f) jungle and coastal regions. The dot-dashed line is the instantaneous time delay in weeks (ΔT) between the oscillating components of two time series. (See [21] for the computation of this delay).



significant coherence was for the seasonal component associated with mean temperature (Figures 8A and 8C) while this relationship was less clear with precipitation (Additional file 2, Figures S9A, S9B, S9C and S9D).

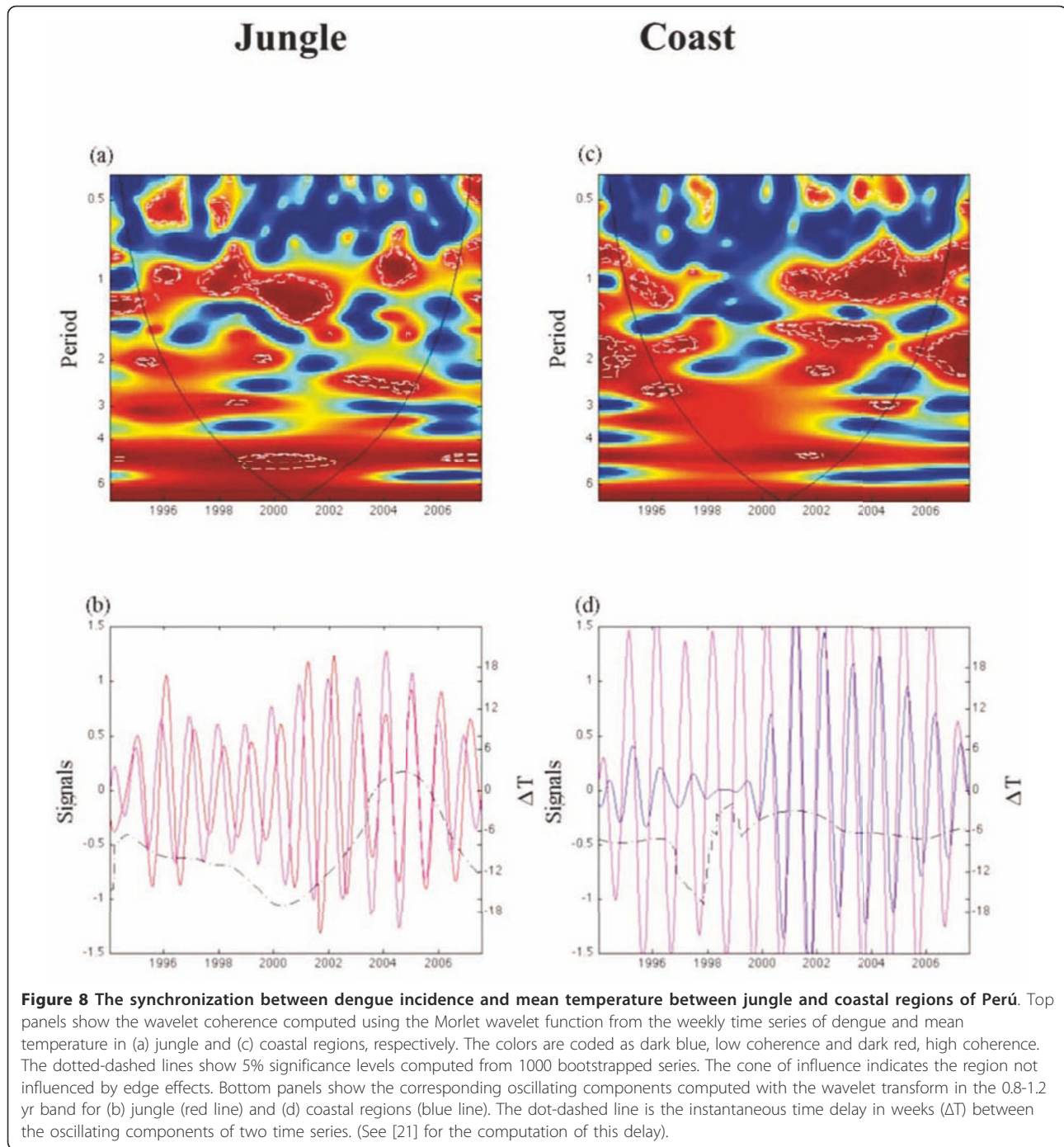
Overall, our findings support the hypothesis that there are significant differences in the timing of dengue epidemics between jungle and coastal areas, and these differences are associated with the timing of the seasonal



cycle of mean temperature. Our results could also suggest that dengue is frequently imported into coastal regions through infective sparks from endemic areas including the jungle region of Perú and/or cities of other neighboring endemic countries, where propitious environmental conditions promote the stability of year round vector breeding sites.

Discussion

We have combined highly refined spatial and temporal dengue incidence data together with geographic, demographic and climate information with the aim of uncovering dengue transmission patterns across geographic regions in Perú. Our findings suggest that there is a significant relationship between the timing of dengue



transmission in jungle and coastal regions of Perú and local ambient temperature that affect the survival and development of the vector.

In jungle regions where dengue is highly persistent large outbreaks occur most frequently around March during the heavy rain season and could be the source of dengue outbreaks in coastal areas following the summer rainfall when propitious environmental conditions promote vector development. It is also possible that such

dengue introductions, particularly into the northern coastal region, originate from cities of other neighboring countries. Indeed, the several-week difference in the period of highest dengue activity between the jungle and coastal region could be attributed to several factors including: (1) the natural delay of development of the vector from larva to adult stages (7-14 days) [38], (2) the time to successful invasion of the dengue virus into coastal areas, and (3) the generation interval of dengue,

which is composed of several factors including the mean extrinsic (mosquito) incubation period (5-15 days) [39], the mean intrinsic incubation period (4-7 days), the mean host infectious period (3-7 days) [39] and the mean adult mosquito lifespan (6-15 days) [40]. Future dengue research in the region should test the hypothesis that jungle areas of Peru act as a reservoir that sparks dengue in other areas of the country.

Our results could have considerable public health implications for dengue control. If the jungle areas are responsible for multiple dengue introductions into coastal areas of Perú, our findings suggest that curtailing the transmission of dengue in areas of high dengue persistence could lead to significant reductions in dengue incidence in coastal areas where dengue incidence typically reaches quite low levels during the dry season. This is associated with low densities of the *Aedes* mosquito population in addition to a longer mosquito incubation period caused by lower temperatures [38]. The use of bed nets, mosquito repellents and screens in houses could have a significant effect reducing the effective population size to a level below a critical community size at which sparks of infection typically lead to stochastic 'fade-out' due to higher demographic stochasticity in small populations [19,41-43]. This intervention could have a particularly significant effect in jungle regions in Perú where the critical community size has been previously estimated at ~500,000 people [16].

Cultural factors pose some of the most challenging obstacles for dengue control worldwide. In Perú, limited access to running water in the northern coastal region causes people to accumulate water in open containers and wells, which are potential breeding sites for the mosquito *Ae. aegypti*. In addition, it is not uncommon to find stagnant water in peri-domestic containers in these areas (e.g., flower vases, pots and discarded tires). Therefore, vector control programs focused on eliminating breeding sites and reducing vector densities, should motivate populations to keep wells and water containers closed and to reduce the number of unnecessary objects near houses. Because of limited resource availability, these interventions would be most effective if conducted within a few weeks prior to the rainy season.

There are several caveats in our study. First, we assumed that incidence of probable dengue cases was a reliable indicator to define the spatial heterogeneity of dengue across Peruvian regions as in previous studies (e.g., [16,44]). Second, our analyses were conducted with the assumption that reporting and coding of dengue cases was homogeneous across Peruvian areas and over the course of the entire study period. Third, serotype-specific dengue data over time and by geographic region were not available to analyze the spatial and temporal dynamics of dengue between jungle and coastal areas. It

is worth noting that longitudinal field studies that monitor populations for dengue viruses have been carried out in Peru, but these have been limited to specific geographic regions [18,45]. Fourth, although we have made use of the best climatological data available, data from meteorological stations may not be necessarily representative of the climate patterns in the larger provinces. The use of interpolated climate data with better meteorological station coverage at smaller spatial scales (e.g., district level) is recommended. Finally, we relied on the provincial divisions of Peru, which are not necessarily the most meaningful spatial units for dengue disease dynamics [16,46].

Conclusions

Dengue is highly persistent in jungle areas of Perú where epidemics peak most frequently around March when rainfall is abundant. Differences in the timing of dengue epidemics in jungle and coastal regions are significantly associated with the seasonal temperature cycle. Our results suggest that dengue is frequently imported into coastal regions through infective sparks from endemic jungle areas and/or cities of other neighboring endemic countries, where propitious environmental conditions promote year-round mosquito breeding sites. If jungle endemic areas are responsible for multiple dengue introductions into coastal areas, our findings suggest that curtailing the transmission of dengue in these most persistent areas could lead to significant reductions in dengue incidence in coastal areas where dengue incidence typically reaches low levels during the dry season.

The spatial differences in the timing of epidemics highlighted in our study demonstrate the advantages of high-resolution spatio-temporal data to detect heterogeneous levels in the spatio-temporal dynamics of dengue epidemics. The presence of significant levels of spatio-temporal heterogeneity highlights the need to exercise caution in the analysis of aggregated time series data that comprise significant spatial heterogeneity such as in the case of Perú.

Additional material

Additional file 1: Supplementary methods. Wavelet time series analysis

Additional file 2: Supplementary information. Supplementary figures

Acknowledgements

We would like to express our gratitude to the people of Dirección General de Epidemiología and the national network of epidemiology for all their hard work conducting surveillance activities and providing the dengue data used in this study. We also thank Michael Golinski and Marcel Hurtado for their critical reading of the manuscript and Kamal Barely for assistance with

graphic enhancement. HB was funded by the intramural research group of Fogarty International Center, National Institutes of Health.

Author details

¹Mathematical and Computational Modeling Sciences Center, School of Human Evolution and Social Change, Arizona State University, Tempe, AZ, USA. ²Division of Epidemiology and Population Studies, Fogarty International Center, National Institutes of Health, Bethesda, MD, USA. ³UMR 7625, UPMC-CNRS-ENS, Ecole Normale Supérieure, 46 rue d'Ulm, 75230, Paris cedex 05, France. ⁴UMMISCO, UMI 209, IRD-UPMC, 32 avenue Henri Varagnat, 93142 Bondy cedex, France. ⁵MIVEGEC, UMR CNRS 5290-IRD 224-UM1-UM2, 911 Avenue Agropolis, BP 64501, 34394 Montpellier Cédex 5, France. ⁶Dirección General de Epidemiología, Ministry of Health. Calle Rivero de Ustariz 251. Jesús María-Lima 11, Perú.

Authors' contributions

GC and BC conceived the study and analyzed the data; GC wrote the first draft of the manuscript. BC, HB and CM participated in the interpretation of results and in the writing and editing of the manuscript. All authors read and approved the final manuscript.

Competing interests

The authors declare that they have no competing interests.

Received: 17 June 2010 Accepted: 8 June 2011 Published: 8 June 2011

References

- Halstead SB: Dengue fever/dengue hemorrhagic fever. In *Infectious Diseases. Volume 2*. 2 edition. Edited by: Cohen J, Powderly WG. Spain: Mosby; 2004:1681-1689.
- Forshey BM, Guevara C, Laguna-Torres VA, Cespedes M, Vargas J, Gianella A, Vallejo E, Madrid C, Aguayo N, Gotuzzo E, et al: **Arboviral etiologies of acute febrile illnesses in Western South America, 2000-2007.** *PLoS Negl Trop Dis* **4**(8):e787.
- Gubler DJ, Kuno G: **Dengue and dengue hemorrhagic fever.** Massachusetts: CABI; 1997.
- Kochel TJ, Watts DM, Halstead SB, Hayes CG, Espinoza A, Felices V, Caceda R, Bautista CT, Montoya Y, Douglas S, et al: **Effect of dengue-1 antibodies on American dengue-2 viral infection and dengue hemorrhagic fever.** *Lancet* **2002**, **360**(9329):310-312.
- Montoya Y: **Circulation of dengue viruses in north-western Peru, 2000-2001.** *Dengue Bulletin* **2003**, **27**:52-62.
- Montoya Y, Holechek S, Caceres O, Palacios A, Burans J, Guevara C, Quintana F, Herrera V, Pozo E, Anaya E, et al: **Circulation of Dengue Viruses in North-Western Peru, 2000-2001.** *Dengue Bulletin* **2003**, **27**:52-62.
- Johansson MA, Dominici F, Glass GE: **Local and global effects of climate on dengue transmission in puerto rico.** *PLoS Negl Trop Dis* **2009**, **3**(2):e382.
- Stoddard ST, Morrison AC, Vazquez-Prokopec GM, Paz Soldan V, Kochel TJ, Kitron U, Elder JP, Scott TW: **The role of human movement in the transmission of vector-borne pathogens.** *PLoS Negl Trop Dis* **2009**, **3**(7):e481.
- Jetten TH, Focks DA: **Potential changes in the distribution of dengue transmission under climate warming.** *Am J Trop Med Hyg* **1997**, **57**(3):285-297.
- Li CF, Lim TW, Han LL, Fang R: **Rainfall, abundance of Aedes aegypti and dengue infection in Selangor, Malaysia.** *Southeast Asian J Trop Med Public Health* **1985**, **16**(4):560-568.
- Mourya DT, Yadav P, Mishra AC: **Effect of temperature stress on immature stages and susceptibility of Aedes aegypti mosquitoes to chikungunya virus.** *Am J Trop Med Hyg* **2004**, **70**(4):346-350.
- Depradine C, Lovell E: **Climatological variables and the incidence of Dengue fever in Barbados.** *Int J Environ Health Res* **2004**, **14**(6):429-441.
- Keating J: **An investigation into the cyclical incidence of dengue fever.** *Soc Sci Med* **2001**, **53**(12):1587-1597.
- Chowell G, Sanchez F: **Climate-based descriptive models of dengue fever: the 2002 epidemic in Colima, Mexico.** *J Environ Health* **2006**, **68**(10):40-44, 55.
- Harrington LC, Scott TW, Lerdtusnee K, Coleman RC, Costero A, Clark GG, Jones JJ, Kitthawee S, Kittayapong P, Sithiprasasna R, et al: **Dispersal of the dengue vector Aedes aegypti within and between rural communities.** *Am J Trop Med Hyg* **2005**, **72**(2):209-220.
- Chowell G, Torre CA, Munayco-Escate C, Suarez-Ognio L, Lopez-Cruz R, Hyman JM, Castillo-Chavez C: **Spatial and temporal dynamics of dengue fever in Peru: 1994-2006.** *Epidemiol Infect* **2008**, **136**(12):1667-1677.
- Farrar J, Focks D, Gubler D, Barrera R, Guzman MG, Simmons C, Kalayanarooj S, Lum L, McCall PJ, Lloyd L, et al: **Towards a global dengue research agenda.** *Trop Med Int Health* **2007**, **12**(6):695-699.
- Morrison AC, Minnick SL, Rocha C, Forshey BM, Stoddard ST, Getis A, Focks DA, Russell KL, Olson JG, Blair PJ, et al: **Epidemiology of dengue virus in Iquitos, Peru 1999 to 2005: interepidemic and epidemic patterns of transmission.** *PLoS Negl Trop Dis* **4**(5):e670.
- Cummings DA, Irizarry RA, Huang NE, Endy TP, Nisalak A, Ungchusak K, Burke DS: **Travelling waves in the occurrence of dengue haemorrhagic fever in Thailand.** *Nature* **2004**, **427**(6972):344-347.
- Mammen MP, Pimgate C, Koenraad CJ, Rothman AL, Aldstadt J, Nisalak A, Jarman RG, Jones JW, Srikiatkachorn A, Ypil-Butac CA, et al: **Spatial and temporal clustering of dengue virus transmission in Thai villages.** *PLoS Med* **2008**, **5**(11):e205.
- Cazelles B, Chavez M, McMichael AJ, Hales S: **Nonstationary influence of El Nino on the synchronous dengue epidemics in Thailand.** *PLoS Med* **2005**, **2**(4):e106.
- Barreto FR, Teixeira MG, Costa Mda C, Carvalho MS, Barreto ML: **Spread pattern of the first dengue epidemic in the city of Salvador, Brazil.** *BMC Public Health* **2008**, **8**:51.
- Woolhouse ME, Dye C, Etard JF, Smith T, Charlwood JD, Garnett GP, Hagan P, Hii JL, Ndhlovu PD, Quinell RJ, et al: **Heterogeneities in the transmission of infectious agents: implications for the design of control programs.** *Proc Natl Acad Sci USA* **1997**, **94**(1):338-342.
- Lloyd-Smith JO, Schreiber SJ, Kopp PE, Getz WM: **Superspreading and the effect of individual variation on disease emergence.** *Nature* **2005**, **438**(7066):355-359.
- Provinces of Peru. [http://en.wikipedia.org/wiki/Provinces_of_Peru].
- Aramburu Guarda J, Ramal Asayag C, Witzig R: **Malaria reemergence in the Peruvian Amazon region.** *Emerg Infect Dis* **1999**, **5**(2):209-215.
- Dirección General de epidemiología. Sistema de vigilancia epidemiológica. Etapas de la vigilancia epidemiológica. [<http://www.dge.gob.pe/>].
- World Health Organization. Clinical diagnosis of dengue. [<http://www.who.int/csr/resources/publications/dengue/012-23.pdf>].
- National Institute of Statistics and Informatics (projection from 1993 census). [<http://www.inei.gob.pe/>].
- Surface areas of Provinces in Peru. [<http://es.wikipedia.org/wiki/Peru>].
- Latitude & longitude coordinates, and elevation of Provinces in Peru. [<http://tierra.meteored.com/tierra-America+del+Sur-Peru-esp.html>].
- Bartlett MS: **The critical community size for measles in the United States.** *J R Stat Soc A* **1960**, **123**:37-44.
- Chan PK, Mok HY, Lee TC, Chu IM, Lam WY, Sung JJ: **Seasonal influenza activity in Hong Kong and its association with meteorological variations.** *J Med Virol* **2009**, **81**(10):1797-1806.
- Cazelles B, Chavez M, Magny GC, Guegan JF, Hales S: **Time-dependent spectral analysis of epidemiological time-series with wavelets.** *J R Soc Interface* **2007**, **4**(15):625-636.
- Grenfell BT, Bjornstad ON, Kappey J: **Travelling waves and spatial hierarchies in measles epidemics.** *Nature* **2001**, **414**(6865):716-723.
- Viboud C, Bjornstad ON, Smith DL, Simonsen L, Miller MA, Grenfell BT: **Synchrony, waves, and spatial hierarchies in the spread of influenza.** *Science* **2006**, **312**(5772):447-451.
- Rouyer T, Fromentin J-M, Stenseth NC, Cazelles B: **Analysing multiple time series and extending significance testing in wavelet analysis.** *Marine Ecology Progress Series* **2008**, **359**:11-21.
- Focks DA, Daniels E, Haile DG, Keesling JE: **A simulation model of the epidemiology of urban dengue fever: literature analysis, model development, preliminary validation, and samples of simulation results.** *Am J Trop Med Hyg* **1995**, **53**(5):489-506.
- Gubler DJ: **Dengue and dengue hemorrhagic fever.** *Clin Microbiol Rev* **1998**, **11**(3):480-496.
- Muir LE, Kay BH: **Aedes aegypti survival and dispersal estimated by mark-release-recapture in northern Australia.** *Am J Trop Med Hyg* **1998**, **58**(3):277-282.
- Keeling MJ, Grenfell BT: **Disease extinction and community size: modeling the persistence of measles.** *Science* **1997**, **275**(5296):65-67.

42. Kuno G: **Review of the factors modulating dengue transmission.** *Epidemiol Rev* 1995, **17**(2):321-335.
43. Wearing HJ, Rohani P: **Ecological and immunological determinants of dengue epidemics.** *Proc Natl Acad Sci USA* 2006, **103**(31):11802-11807.
44. Thai KT, Cazelles B, Nguyen NV, Vo LT, Boni MF, Farrar J, Simmons CP, van Doorn HR, de Vries PJ: **Dengue dynamics in Binh Thuan province, southern Vietnam: periodicity, synchronicity and climate variability.** *PLoS Negl Trop Dis* **4**(7):e747.
45. Forshey BM, Morrison AC, Cruz C, Rocha C, Vilcarromero S, Guevara C, Camacho DE, Alava A, Madrid C, Beingolea L, et al: **Dengue virus serotype 4, northeastern Peru, 2008.** *Emerg Infect Dis* 2009, **15**(11):1815-1818.
46. Chowell G, Munayco CV, Escalante AA, McKenzie FE: **The spatial and temporal patterns of falciparum and vivax malaria in Peru: 1994-2006.** *Malar J* 2009, **8**(1):142.

Pre-publication history

The pre-publication history for this paper can be accessed here:
<http://www.biomedcentral.com/1471-2334/11/164/prepub>

doi:10.1186/1471-2334-11-164

Cite this article as: Chowell et al.: The influence of geographic and climate factors on the timing of dengue epidemics in Peru, 1994-2008. *BMC Infectious Diseases* 2011 **11**:164.

**Submit your next manuscript to BioMed Central
and take full advantage of:**

- Convenient online submission
- Thorough peer review
- No space constraints or color figure charges
- Immediate publication on acceptance
- Inclusion in PubMed, CAS, Scopus and Google Scholar
- Research which is freely available for redistribution

Submit your manuscript at
www.biomedcentral.com/submit

