

RESEARCH ARTICLE

Open Access

# *Wolbachia* association with the tsetse fly, *Glossina fuscipes fuscipes*, reveals high levels of genetic diversity and complex evolutionary dynamics

Rebecca E Symula<sup>1,2,3\*†</sup>, Uzma Alam<sup>3†</sup>, Corey Brelsfoard<sup>3,4</sup>, Yineng Wu<sup>3</sup>, Richard Echodu<sup>1,3,5</sup>, Loyce M Okedi<sup>6</sup>, Serap Aksoy<sup>3</sup> and Adalgisa Caccone<sup>1</sup>

## Abstract

**Background:** *Wolbachia pipientis*, a diverse group of  $\alpha$ -proteobacteria, can alter arthropod host reproduction and confer a reproductive advantage to *Wolbachia*-infected females (cytoplasmic incompatibility (CI)). This advantage can alter host population genetics because *Wolbachia*-infected females produce more offspring with their own mitochondrial DNA (mtDNA) haplotypes than uninfected females. Thus, these host haplotypes become common or fixed (selective sweep). Although simulations suggest that for a CI-mediated sweep to occur, there must be a transient phase with repeated initial infections of multiple individual hosts by different *Wolbachia* strains, this has not been observed empirically. *Wolbachia* has been found in the tsetse fly, *Glossina fuscipes fuscipes*, but it is not limited to a single host haplotype, suggesting that CI did not impact its population structure. However, host population genetic differentiation could have been generated if multiple *Wolbachia* strains interacted in some populations. Here, we investigated *Wolbachia* genetic variation in *G. f. fuscipes* populations of known host genetic composition in Uganda. We tested for the presence of multiple *Wolbachia* strains using Multi-Locus Sequence Typing (MLST) and for an association between geographic region and host mtDNA haplotype using *Wolbachia* DNA sequence from a variable locus, *groEL* (heat shock protein 60).

**Results:** MLST demonstrated that some *G. f. fuscipes* carry *Wolbachia* strains from two lineages. *GroEL* revealed high levels of sequence diversity within and between individuals (Haplotype diversity = 0.945). We found *Wolbachia* associated with 26 host mtDNA haplotypes, an unprecedented result. We observed a geographical association of one *Wolbachia* lineage with southern host mtDNA haplotypes, but it was non-significant ( $p = 0.16$ ). Though most *Wolbachia*-infected host haplotypes were those found in the contact region between host mtDNA groups, this association was non-significant ( $p = 0.17$ ).

**Conclusions:** High *Wolbachia* sequence diversity and the association of *Wolbachia* with multiple host haplotypes suggest that different *Wolbachia* strains infected *G. f. fuscipes* multiple times independently. We suggest that these observations reflect a transient phase in *Wolbachia* evolution that is influenced by the long gestation and low reproductive output of tsetse. Although *G. f. fuscipes* is superinfected with *Wolbachia*, our data does not support that bidirectional CI has influenced host genetic diversity in Uganda.

**Keywords:** *Wolbachia*, Population structure, Sequence diversity, *groEL*, MLST

\* Correspondence: resymula@olemiss.edu

†Equal contributors

<sup>1</sup>Department of Ecology and Evolutionary Biology, Yale University, 21 Sachem St, New Haven, CT, USA

<sup>2</sup>Department of Biology, University of Mississippi, University, MS, USA

Full list of author information is available at the end of the article

## Background

*Wolbachia pipientis* is a diverse group of  $\alpha$ -proteobacteria found to infect many terrestrial arthropods and filarial nematodes [1], with new hosts being discovered constantly [2,3]. *Wolbachia* is currently divided into eight monophyletic “supergroup” lineages (A-H) [4], based on Multi-Locus Sequence Typing (MLST) [5].

Although this bacterium may positively influence host physiology [6,7], *Wolbachia* is best known for parasitism that alters host reproductive success, including cytoplasmic incompatibility (CI) [8]. CI is the most studied reproductive modification induced by *Wolbachia* and results in embryonic lethality when uninfected females are crossed with *Wolbachia*-infected males. In a population composed of infected and uninfected individuals, only infected females can mate successfully with infected and uninfected males [8]. When two *Wolbachia* strains exist in a population, bidirectional CI can result in incompatibility between individuals carrying different strains, whereas individual females infected with multiple strains (superinfected) can mate with all males and produce infected progeny [9]. In both CI types, *Wolbachia* is expected to sweep through populations due to higher reproductive fitness because of the higher proportion of successful matings between infected or superinfected females relative to the uninfected ones. However, not all *Wolbachia* strains cause CI and strength of CI expression (penetrance) can be altered by *Wolbachia* density or transmission efficiency (maternal transmission fidelity)[10].

Given the influence of *Wolbachia* on host fitness, the potential impact of *Wolbachia* on host population genetic variability and geographical patterns is substantial. Since *Wolbachia* is maternally transmitted, other maternally transmitted organelles (e.g., mitochondria) hitchhike with *Wolbachia* infections [11,12]. Even though simulations indicate that CI-based spread of *Wolbachia* sweeps are more likely to involve repeated initial infections via horizontal transmission [13,14], most studies of CI-associated *Wolbachia* sweeps find it associated with low mitochondrial DNA (mtDNA) variation and with many hosts infected [15,16]. Theoretical models suggest that host dispersal or migration, and genetic background [17,18] can influence these sweeps [9,19-21]. Factors that control *Wolbachia* density, such as nutrient availability or temperature [22,23], indirectly influence CI-based sweeps, because at high *Wolbachia* densities maternal transmission fidelity and CI expression are stronger than those at low *Wolbachia* densities.

The evolutionary dynamics of *Wolbachia* spread are important for strategies aimed at vector control. In tsetse (*Glossina* spp.), the sole vectors of trypanosomes that cause Human African Trypanosomiasis (HAT), *Wolbachia* infections are common [24-26] and can cause CI [27]. In Uganda, the primary HAT vector is *G. fuscipes fuscipes*.

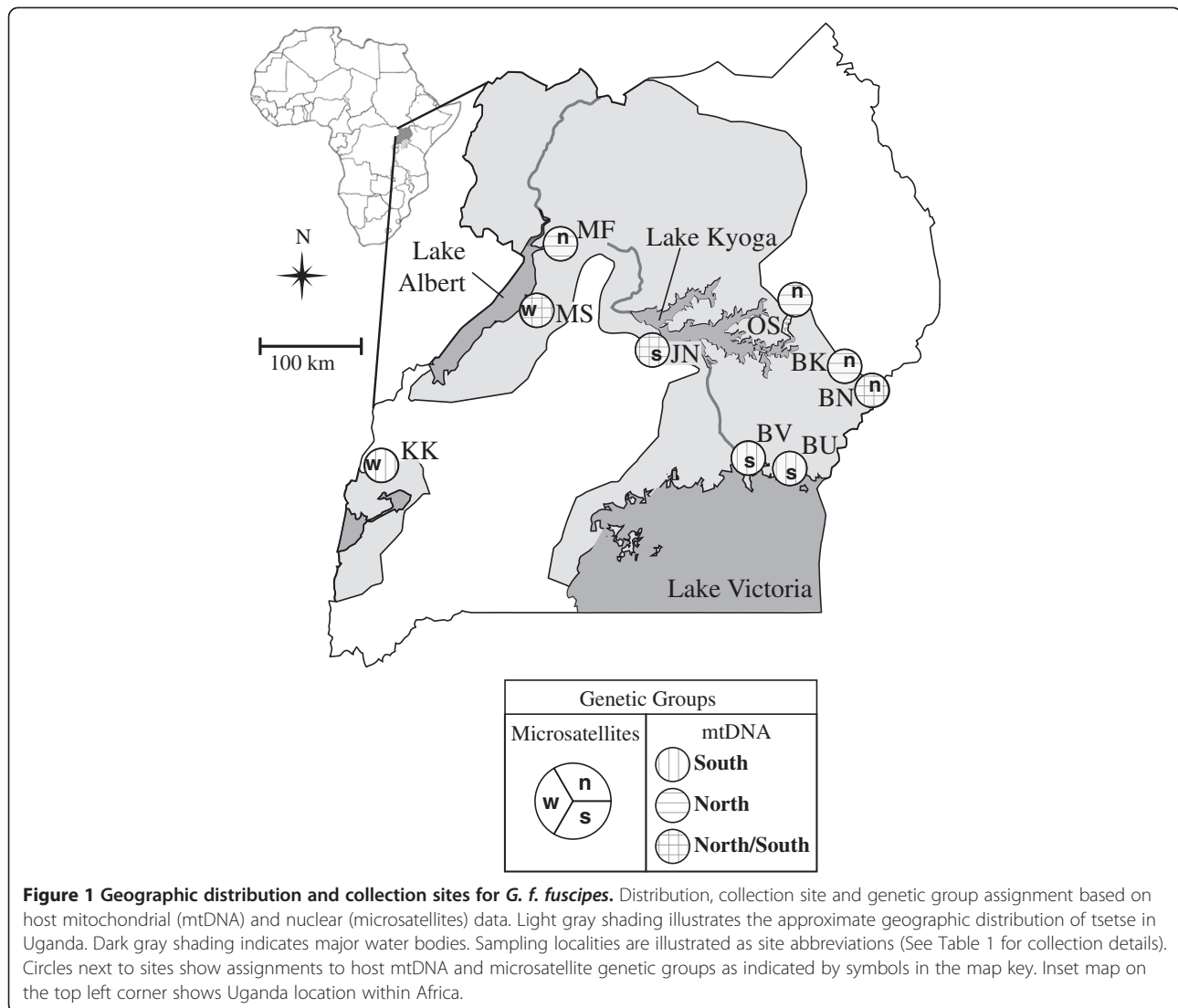
Nuclear microsatellites and mtDNA data in this species identified discrete genetic populations and unexpected genetic breaks with complex patterns of gene flow in relatively continuous landscapes [28,29]. In Ugandan *G. f. fuscipes*, *Wolbachia* prevalence varies in most sites (6.7%-100%) with low within-individual *Wolbachia* density [26]. Contrary to expectations, *Wolbachia* prevalence was correlated to host groups defined by nuclear microsatellite data rather than mtDNA, suggesting that its spread may depend largely on host gene flow and dispersal, and not a selective sweep [26]. A possible explanation for the observed discrepancy between *Wolbachia* and host mtDNA is that there were multiple undetected *Wolbachia* strains present in each host individual, which would go undetected when only testing for infection presence.

To understand *Wolbachia* evolutionary dynamics and their relationship with host mtDNA, we used *G. f. fuscipes* from Ugandan populations of known genetic background and *Wolbachia* infection status [28-30]. We tested for the presence of multiple *Wolbachia* infections (superinfections) in single flies using four MLST loci. To test the relationship between *Wolbachia* infections and genetic variation within and among host individuals and to examine its evolutionary origin, we used sequence data from a known variable locus, *groEL* (heat shock protein 60) [31]. We tested the hypothesis that *Wolbachia*-induced CI has shaped geographic patterns of host genetic variation and discuss how the unique life history traits of tsetse may generate unique patterns of genetic diversity in *Wolbachia*.

## Methods

### Sampling, locus selection and laboratory methods

Samples were selected from *Wolbachia*-positive flies with known host mtDNA and microsatellite genotypes (Figure 1, Table 1, See Additional file 1: Table S1) [26]. Details on the host genetic make-up can be found in Additional file 1. DNA was extracted from whole bodies or from ovarian tissue using Qiagen DNeasy extraction kits (Qiagen, Inc.). For the MLST examination of superinfection, four individuals (BK08033, BV10, JN6, JN8) were used from three sampling localities (BK, BV, JN, Figure 1). Between two and eight *Wolbachia*-infected *G. f. fuscipes* individuals from each of 10 Ugandan sites were selected for *groEL* for a total of 47 flies. All individuals except BK08033 were sequenced for both MLST and *groEL*. Due to low-density *Wolbachia* infections [26], two consecutive PCRs were performed for all target genes (See Additional file 1 for details). PCR products were cleaned and prepared for cloning using the QiaQuick Gel extraction protocol (Qiagen, Inc.). For MLST, eight clones were sequenced for each individual and locus. For *groEL*, between two and 20 clones were used for sequencing for each individual fly.



#### Artifact and recombinant removal for *groEL* dataset

Artificial inflation of variation in DNA sequences can arise as PCR artifact in sequence data due to infidelity and error introduced by Taq DNA polymerase. To minimize the effects of PCR artifact in the *groEL* dataset (no variation was detected among MLST clones), each consecutive PCR amplification served as a “reconditioning PCR” [32], using a small aliquot from an initial PCR. For three individuals from a single geographic locality (JN), we amplified the same template from two independent PCR to verify strain haplotypes [32]. After sequencing, potential PCR artifacts were identified and removed using a statistical approach [33] that incorporated the GoTaq Error rate ( $1-7 \times 10^{-4}$  per base pair per cycle (Promega)). We then retained all “common” sequences that were found in multiple copies within or among individuals, as their co-occurrence suggest that they are natural, rather than artificial polymorphisms (See Additional file 1 for details).

Given the high sequence diversity in the *groEL* dataset, we used GENECONV [34], a statistical software package that detects potential recombinants by measuring whether a large proportion of DNA sequence in a pairwise comparison is more similar than expected by chance. Since we were not directly interested in recombinants, we removed any sequence from the dataset that could be a recombinant (See Additional file 1 for details). Within an individual, some recombinants may be naturally occurring rather than an artificial product arising from laboratory methods (e.g., PCR and cloning). However, there is no way to discriminate between natural and artificial recombinants, so we chose a conservative approach and excluded them, as this removal does not impact the testing of our hypotheses. As a result, our diversity measures may be underestimates, since some recombination is likely to occur between strains within a single host fly.

**Table 1 Summary of *G. f. fuscipes* collection sites, number of individuals used for *Wolbachia* sequencing, infection prevalence, and sequence diversity**

| Collection Site         | Site Code | Latitude/Longitude | No. of Host Individuals | Infection Prevalence (%) <sup>1</sup> | Average No. of Nucleotide Differences | No. of Haplotypes | H <sub>d</sub> |
|-------------------------|-----------|--------------------|-------------------------|---------------------------------------|---------------------------------------|-------------------|----------------|
| Pallisa                 | BK        | 1.02/33.88         | 2                       | 53.6 (N = 69)                         | 4.5                                   | 6                 | 1.000          |
| Bunghazi                | BN        | 0.93/33.98         | 5                       | 6.7 (N = 15)                          | 4.9                                   | 10                | 0.970          |
| Busime                  | BU        | 0.25/33.97         | 3                       | 29.4 (N = 34)                         | 23.4                                  | 5                 | 1.000          |
| Buvuma                  | BV        | 0.31/33.30         | 5                       | 60 (N = 35)                           | 19.1                                  | 8                 | 0.927          |
| Junda                   | JN        | 1.33/32.74         | 8                       | 65.1 (N = 43)                         | 11.2                                  | 32                | 0.995          |
| Kakoga                  | KK        | 0.37/30.28         | 3                       | 35.7 (N = 28)                         | 4.8                                   | 8                 | 0.972          |
| Masindi                 | MS        | 1.63/31.69         | 6                       | 6.3 (N = 16)                          | 6.0                                   | 14                | 1.000          |
| Murchison Falls         | MF        | 2.28/31.56         | 3                       | 90 (N=)                               | 7.4                                   | 19                | 0.983          |
| Osuguro                 | OS        | 1.53/33.50         | 2                       | 20 (N = 20)                           | 5.3                                   | 3                 | 1.000          |
| Lukaya River            | DRC       | -4.48/15.31        | 5                       | N/A                                   | N/A                                   | N/A               | N/A            |
| Gfq Colony <sup>2</sup> | GF        | N/A                | 5                       | N/A                                   | N/A                                   | N/A               | N/A            |

<sup>1</sup>Infection prevalence data from [26].

<sup>2</sup>Collection site origin is unknown for the colony maintained at the Slovakia Academy of Science, Bratislava, Slovakia. Tissues were kindly provided by Peter Takac.

<sup>3</sup>Only the complete dataset was used to calculate diversity statistics in this table because the conservative dataset eliminated individuals.

Measures of *Wolbachia* *groEL* nucleotide differences and genetic diversity were calculated using the complete dataset<sup>3</sup>. H<sub>d</sub> refers to *groEL* haplotype diversity within a site.

Excluding all *groEL* sequences that did not occur more than once eliminated entire individual flies from our dataset and lowered the power to detect patterns of geographic variation. Complete removal of singleton sequences should not imply that *Wolbachia* is absent from that individual, but that its *groEL* sequence is not precisely known. As such we used two *groEL* datasets, a “complete” dataset (all sequences that could not be considered artifacts by the above methods, even if they appeared only once in the dataset), and a “conservative” dataset (only sequences found two or more times in one or more individuals). We used the complete dataset to infer the *groEL* phylogeny, identify *groEL* haplogroups (groups of related haplotypes), and examine the possibility of bidirectional CI. We used the conservative dataset to examine host population genetic expectations for bidirectional CI, build a haplotype network and estimate within-individual *Wolbachia* genetic diversity.

#### Phylogenetic analysis and sequence diversity

For each individual fly, all clones (N = 8) from each MLST gene were identical (See Additional file 1: Table S2). Thus, we used one sequence per individual and a concatenated dataset of the four MLST genes (1635 bp) to identify *Wolbachia* superinfections. *Glossina fuscipes fuscipes* *Wolbachia* samples were aligned to those from [25] and from the *Wolbachia* MLST database [35] using MEGA 5.0 [36]. Phylogenetic analysis was performed using Bayesian inference and maximum likelihood. For *groEL*, *Wolbachia* sequences from *G. f. fuscipes* were aligned to ones from other insects [37] (See Additional

file 1: Table S3) in MacClade 4.08 [38,39]. jModeltest [39,40] was used to select the model of DNA sequence evolution. Phylogenetic trees were generated by maximum likelihood, as implemented in Garli 0.96b8 [41]. Branch support was generated using 1000 bootstrap replicates. Tree topologies were examined to confirm superinfections in *G. f. fuscipes*. For details of the phylogenetic analysis, see Additional file 1.

Diversity statistics were calculated on the complete and the conservative *groEL* datasets using DNAsp [42]. To understand evolutionary relationships within *G. f. fuscipes* *Wolbachia* lineages at different hierarchical levels (individual flies, collection sites, and the entire dataset), we constructed haplotype networks using parsimony (TCS v1.21 [43]). Based on genetic distances within and between the networks generated from the complete dataset, we defined two *groEL* haplogroups, “Group 1” and “Group 2” that correspond to the lineages identified in the phylogeny and divided Group 1 into subgroups (See Additional file 1: Figure S2).

#### Association of *Wolbachia* haplogroups to geography and host background

We used Analysis of Molecular Variance (AMOVA [44]) on the complete and conservative datasets to evaluate the partitioning of *groEL* genetic diversity within and among host mtDNA haplogroups and to examine whether bidirectional CI could have generated the divergent host haplogroups. Specifically, we used AMOVA to test if the diversity in *groEL* was differentially distributed with respect to host mtDNA haplogroups. Under bidirectional CI *Wolbachia* sequences within mtDNA haplogroups should

be more closely related than between haplogroups, and variance among host haplotype groups should be large and significant. In addition, we tested whether there was an association of *Wolbachia* Group 2 with southern host mtDNA haplogroups using randomization tests. Specifically, we randomly assigned the presence of *Wolbachia* Group 2 to the 47 individual flies used in our dataset to generate 100 random datasets. Then, we compared the observed number of individuals with *Wolbachia* Group 2 and the southern host mtDNA haplogroup to that in the randomized dataset.

To understand geographic relationships between host haplotypes and *Wolbachia* infection, we compared host mtDNA haplotypes and *Wolbachia* infection status. We examined *G. f. fuscipes* *Wolbachia* groups relative to host haplotypes and compared these samples to individuals screened for host mtDNA haplotypes [28,29] and for *Wolbachia* prevalence [26]. We specifically tested whether there was an association between host mtDNA haplotype and *Wolbachia* infection status by examining whether *Wolbachia* infected individuals were more often associated with a host mtDNA haplotype found in the contact zone between the north and south host mtDNA haplogroups. For this test, we randomly assigned *Wolbachia* infection status to the individuals screened [26] for which we had host haplotype (N = 366) to generate 100 random datasets. Then, we examined the observed proportion of flies with host haplotypes from the contact zone relative to the randomized datasets.

## Results

### Clone variation and final dataset composition

For each MLST locus from a single individual, all eight clones yielded identical sequences. In contrast, many clones yielded different sequences for the *groEL* dataset. Following the removal of PCR and cloning artifacts, the complete dataset consisted of 47 individuals with a total of 102 *groEL* haplotypes. The conservative dataset consisted of 37 individual flies and a total of 21 *groEL* haplotypes. GenBank accession numbers for the 102 haplotypes are KC493415 - KC493553.

### Phylogenetic analyses for MLST and *groEL*

Phylogenetic tree topologies inferred from the MLST and *groEL* datasets are shown in Figure 2. The MLST dataset identified two phylogenetic *Wolbachia* lineages and suggests that one belongs to supergroup A, a group with *Wolbachia* from many insects, including other *Glossina* species [25]. The second lineage is placed outside of supergroup A, but does not align with any previously described group (Figures 2, See Additional file 1: Figure S1). Our data do not include all five *Wolbachia* MLST loci [35], and therefore do not provide a complete picture of supergroup assignment.

The *groEL* phylogeny similarly identified two lineages, suggesting one belongs to supergroup A, but the placement of the second lineage is not supported (Figure 2). As a marker, *groEL* evolves much more rapidly than MLST markers and may not be as informative for phylogenetic inference. We cannot directly compare the tree topology of the MLST and *groEL* datasets to address the taxonomic placement of *Wolbachia* from *G. f. fuscipes* as our sampling differs between the datasets. However, the MLST data confirms the presence of multiple strains within *G. f. fuscipes* populations, as sequences were identical within individuals, and the *groEL* data reveal the presence of multiple infections within individual hosts and populations.

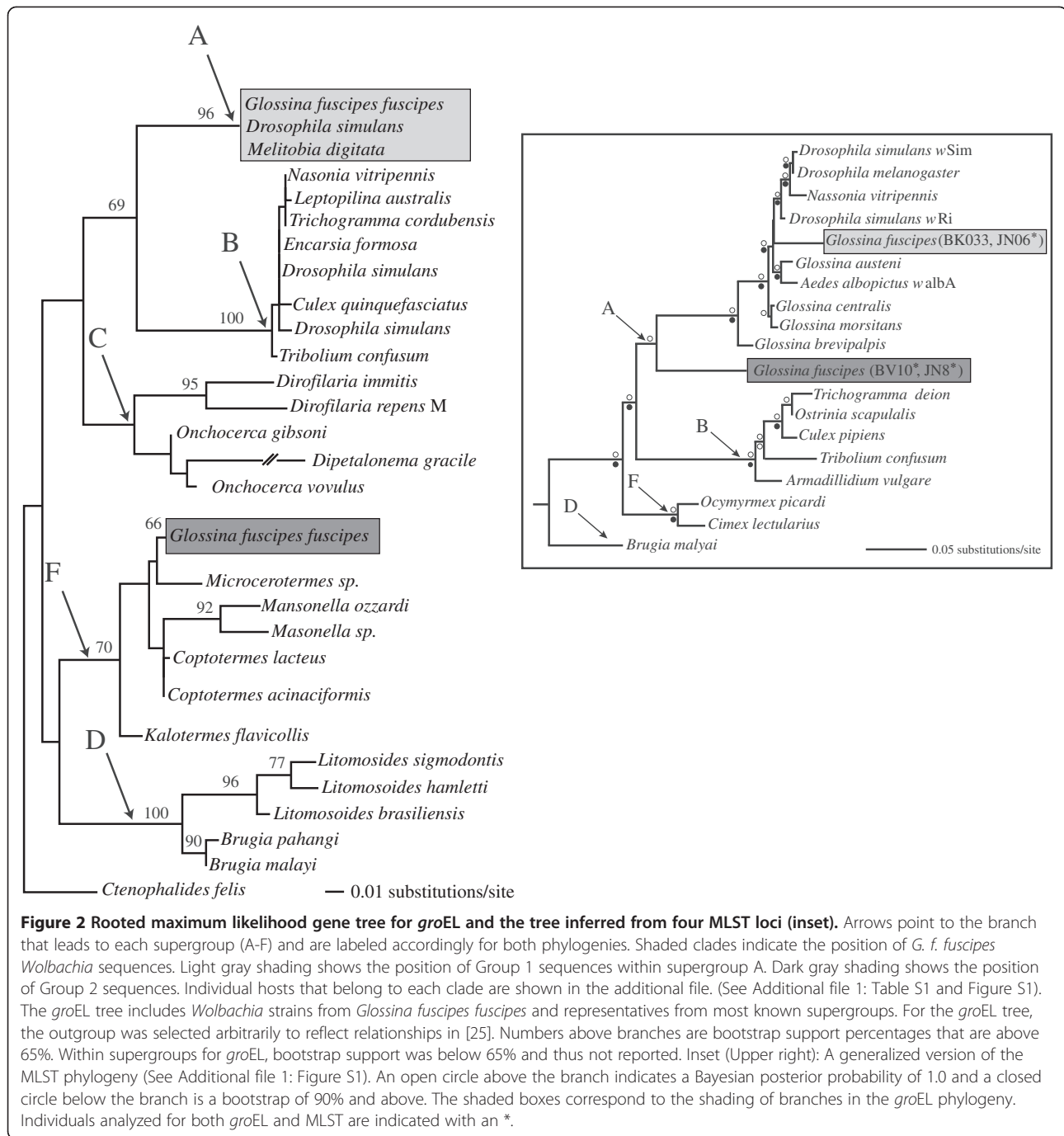
### *groEL* haplotype relationships and genetic diversity

TCS generated two parsimony networks for both the complete and conservative datasets (Figures 3, See Additional file 1: Figure S4) corresponding to the two lineages (Group 1 and Group 2) in the phylogenetic analysis (Figure 2). Individuals within supergroup A are found in a large network (Group 1), while those outside of supergroup A are found in a smaller network (Group 2). Group 1 is subdivided into three subgroups (Subgroups 1a, 1b, 1c) for the complete dataset (For subgroup assignment details, see Additional file 1).

Measures of sequence diversity are shown in Table 2 (See Additional file 1: Table S4). In the conservative dataset, *groEL* haplotype diversity ( $H_d$ ) is close to 1 (Table 2), ranging between 0.600 and 0.905 in the different subgroups. Nucleotide diversity ( $\pi$ ) is highest in Subgroup 1a ( $\pi=0.0069$ ), and approximately equal for the other groups ( $\pi=0.0018-0.00535$ ). *GroEL* haplotype and nucleotide diversity statistics for the complete dataset are comparable to those calculated for the conservative dataset (See Additional file 1: Table S4).

### Association of *Wolbachia groEL* haplogroups to geography and host background

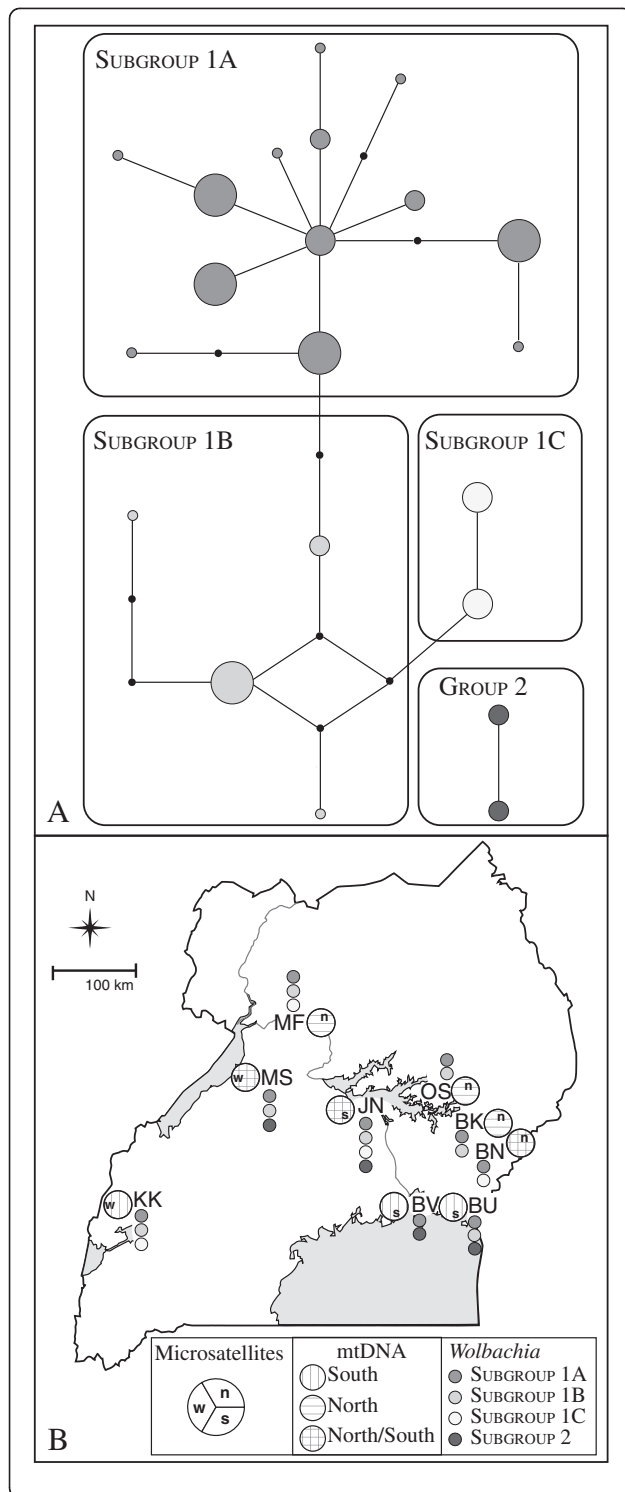
We performed an AMOVA to look for evidence of bidirectional CI in the *G. f. fuscipes* host. If bidirectional CI shaped host mtDNA diversity, we would expect to see that *Wolbachia* sequences within mtDNA haplogroups should be more closely related than between host haplogroups. The results of this analysis on the complete dataset suggest that most *Wolbachia groEL* variation is found within (98.43%) rather than between (1.57%) tsetse host mtDNA haplogroups ( $p = 0.07$ , Table 3). The non-significant AMOVA result indicates that the host mtDNA N and mtDNA S groups are not supported by the *Wolbachia* data, a result that conflicts with the idea of bidirectional CI shaping host genetic groups. This result is also confirmed by the conservative dataset (AMOVA,  $p = 0.79$ , Table 3), as host mtDNA haplogroups



have identical numbers of *Wolbachia groEL* haplotypes (Table 2).

The relationship between *groEL* haplotypes, their group assignment, and their relationship to the host genetic variation is shown in Figure 3B. Group 1 and all three of its subdivisions (subgroups 1a-1c) occur in nearly all sites. Group 2 is mostly limited to sites with southern host mtDNA haplotypes, but it also included *groEL* sequences from two sites (JN, MS), where both southern and northern host mtDNA haplotypes co-occur.

Since *Wolbachia* is transmitted maternally, *Wolbachia* sequences should be linked with specific host mtDNA haplotypes. Most of the flies screened for *Wolbachia* had mtDNA haplotypes found in the sites with mixed host haplotypes (Figure 1, 3, 4, See Additional file 1: Table S1). However, these mtDNA haplotypes were also found in other sites. Only samples from KK, DRC and the colony, which have unique *groEL* haplotypes, do not follow this pattern. We tested for an association between infection status and host mtDNA haplotypes in the mixed



**Figure 3 Parsimony network and geographic locations of different haplogroups for *Wolbachia groEL*.** Relationships among *groEL* haplotypes, group subdivisions, and geographic distribution for the conservative dataset. **A.** TCS parsimony network for the *groEL* haplotypes. Each circle shows one haplotype. Solid black circles (nodes) indicate number of nucleotide differences between haplotypes. Circle size represents haplotype frequency. Each branch shows one nucleotide change. Shading highlights different network subdivisions and corresponds to the haplotypes in rounded rectangles. **B.** Geographic distribution of *groEL* haplogroups relative to previously defined genetic groups (Figure 1). Small, filled circles indicate the *Wolbachia groEL* haplogroups represented at each site with shading corresponding to group assignment as in Figure 3A.

region. In 100 randomizations, we found that the proportion of infected individuals observed to have a host mtDNA haplotype found in the mixed region was not significantly different than when we randomly assigned infected status to host mtDNA haplotype ( $p = 0.17$ ). *GroEL* sequences from Group 1 are associated with all sampled host haplotypes (Figure 3B, See Additional file 1: Table S1), and thus, both host mtDNA haplogroups. In Group 2, *groEL* sequences are only associated with four host mtDNA haplotypes: most flies had southern mtDNA haplotypes, but two flies (JN6, JN18) had the same northern mtDNA haplotype. We also tested whether the association of Group 2 with southern mtDNA host haplotypes was non-random and found a non-significant association ( $p = 0.16$ ).

Figure 4 shows the association between *Wolbachia* infection status and *G. f. fuscipes* host mtDNA from a dataset from the same region [26]. The most common host mtDNA haplotypes (19, 27 and 37) have more *Wolbachia* infected individuals than other haplotypes. However, these haplotypes also occur in uninfected individuals. In *G. f. fuscipes*, many *Wolbachia*-infected individuals have host haplotypes found in the geographic region with mixed host mtDNA haplogroups, though this result is not significant ( $p = 0.17$ ). In the mixed region, more individuals are *Wolbachia* positive than negative, although only three mtDNA haplotypes have significantly more infected individuals in the mixed region (black vs. grey bars, Figure 4). This and the association with the most common host haplotypes were consistent with the notion that infected rather than uninfected hosts should occur at higher frequency if *Wolbachia* induces CI.

## Discussion

### Intra- and inter-individual genetic diversity in *G. f. fuscipes Wolbachia* lineages

Based on *groEL*, *G. f. fuscipes Wolbachia* lineages are diverse (Tables 1, 2), with *groEL* haplotype diversity varying only slightly ( $H_d = 0.905-1.0$ ) regardless of scale (e.g., dataset, lineage, group subdivision or collection site, Figure 3, 4, See Additional file 1: Table S1). When not superinfected

**Table 2 Haplotype and genetic diversity estimates for *Wolbachia groEL* sequence groups for the conservative dataset**

| Group          | Haplotype Diversity ( $H_d$ ) | Nucleotide Diversity ( $\Pi$ ) | Haplotypes (N) | Sequences (N) | Segregating Sites (N) |
|----------------|-------------------------------|--------------------------------|----------------|---------------|-----------------------|
| Entire Dataset | 0.945                         | 0.02569                        | 21             | 56            | 52                    |
| Group "1"      | 0.938                         | 0.01276                        | 19             | 52            | 24                    |
| Subgroup "1a"  | 0.905                         | 0.00691                        | 13             | 36            | 15                    |
| Subgroup "1b"  | 0.644                         | 0.00535                        | 4              | 10            | 7                     |
| Subgroup "1c"  | 0.600                         | 0.00188                        | 2              | 6             | 1                     |
| Group "2"      | 0.667                         | 0.00208                        | 2              | 4             | 1                     |
| mtDNA N        | 0.957                         | 0.01142                        | 14             | 22            | 18                    |
| mtDNA S        | 0.937                         | 0.03197                        | 14             | 27            | 46                    |

Groups refer to those shown in Figure 3. MtDNA N and mtDNA S refer to the host fly northern and southern mtDNA haplogroups, respectively, defined in [28,29]. *Wolbachia groEL* sequences were assigned to the haplogroup of the individual fly from which they were obtained.

(infected only with Group 1), *groEL* haplotype diversity is still high ( $H_d = 0.938$ , Table 2). There are 102 and 21 unique *groEL* haplotypes in the complete and in the conservative dataset, respectively. Of the 21 unique *groEL* haplotypes, 13 were found in many individuals and sites (See Additional file 1: Table S4 and Figure S4).

Finding *Wolbachia* strain diversity in wild host populations is not unprecedented, but it has not been reported within individuals at this geographic scale. In European cherry fruit flies, *Rhagoletis*, multiple strains were found using the *wsp* gene (*Wolbachia* surface protein), but multiple strains within an individual were not reported [45]. Similarly in planthoppers, *Perkinsiella*, a number of B and F supergroup strains were identified using *wsp*, with F strains inferred to be potential recombinants [46]. While these and other studies identified high levels of *Wolbachia* diversity among individuals [47], our study found similar high levels of sequence variation at a much smaller scale, within individuals (See Additional file 1: Figure S2).

We suggest that the unique *Glossina* life history traits facilitate the identification of a transient phase of *Wolbachia* infection dynamics. Tsetse flies have a viviparous reproductive biology, where one oocyte matures and a single larva is nourished in an intrauterine environment. Females reproduce over their 3–4 month life span, producing 8–10 progeny. The low *Wolbachia* densities in *G. f. fuscipes* may reflect this viviparous biology of tsetse, since the few oocytes present in tsetse females may not necessitate retention of high *Wolbachia* densities that are required in oviparous females. However, *Wolbachia* densities in *G. f. fuscipes* were significantly lower than in the laboratory line

*G. morsitans morsitans*, a species with similar life history traits. Environmental influences on *Wolbachia* densities in natural populations may be relevant and should be tested in other natural *Glossina* populations. Since *G. f. fuscipes* *Wolbachia* densities are very low, if a new *Wolbachia* variant arises within an individual, it is more likely to be observed and to have a proportionally larger impact on the overall genetic diversity in an individual than in a high-density *Wolbachia* infection. Thus, the peculiar tsetse life history may indirectly shape *Wolbachia* diversity within an individual host and allow the identification of variants that would otherwise not be detected.

#### Origin of *G. f. fuscipes* *Wolbachia* infections

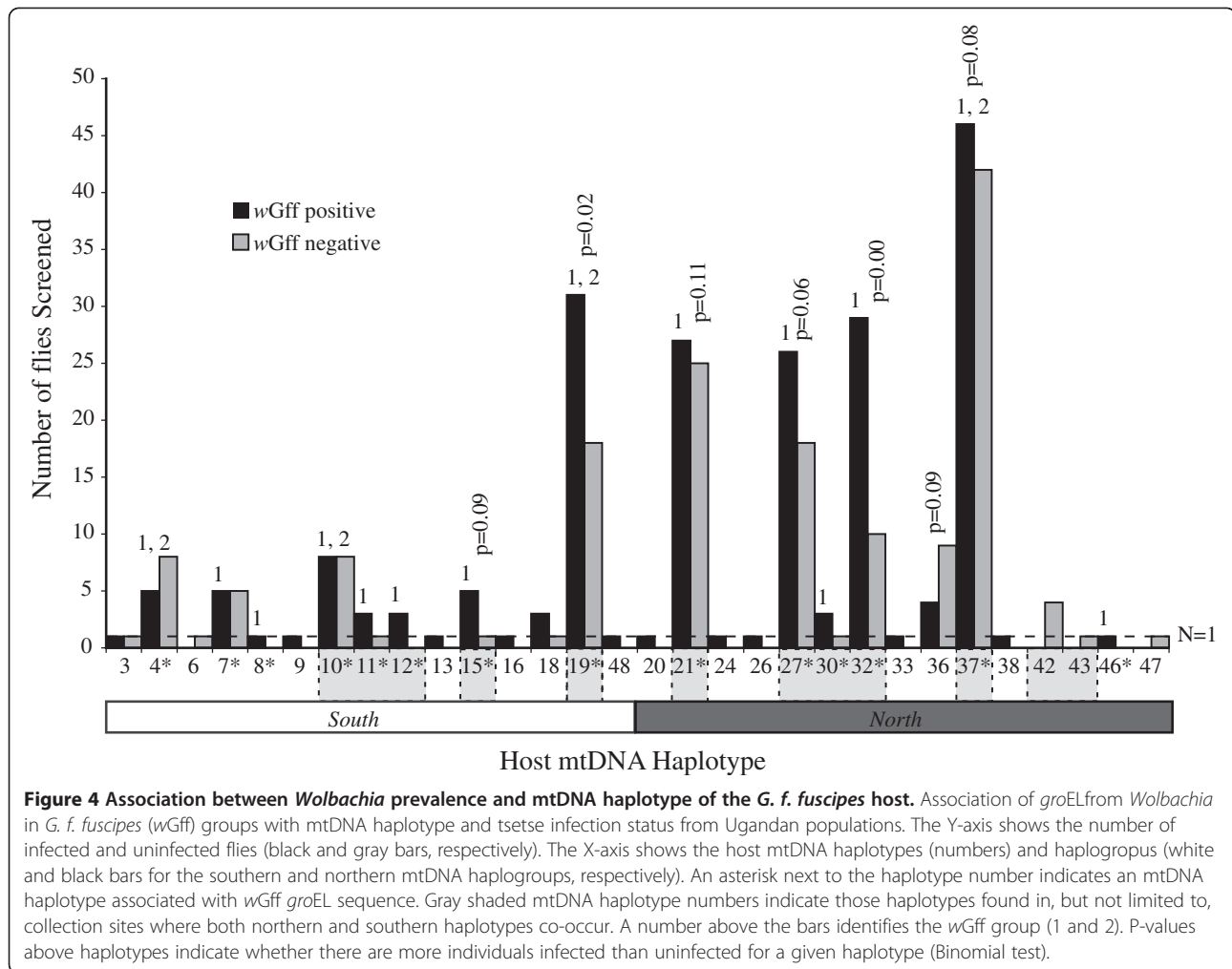
The observed patterns and levels of genetic diversity of the two supergroups and their co-occurrence with any one host mtDNA haplotype suggests that the origin of *G. f. fuscipes* *Wolbachia* (hereafter *wGff* refers to any *Wolbachia* strain found in *G. f. fuscipes*) infections is complex and different from *Wolbachia* infection patterns reported in other studies. In insect populations that have undergone a selective sweep due to CI, *Wolbachia* infections are often associated with a single mtDNA haplotype from one or a few females [16,48]. In *G. f. fuscipes*, *wGff* are associated with at least 26 host mtDNA haplotypes (Figure 4, See Additional file 1: Table S1) with only 15 of these host haplotypes carrying the observed *wGff* sequence diversity. In addition, these mtDNA haplotypes are found in all *wGff* groups. These observations could suggest that the infection in this tsetse species is ancient with unprecedented horizontal and imperfect transmission. Although this scenario is

**Table 3 *Wolbachia groEL* AMOVA results that examine the hypothesis of bidirectional CI using groups (North and South) defined by *G. f. fuscipes* mtDNA**

|                  | Complete dataset    |              |                             |              | Conservative dataset |              |                             |              |
|------------------|---------------------|--------------|-----------------------------|--------------|----------------------|--------------|-----------------------------|--------------|
|                  | Variance components |              | Percentage of Variation (%) |              | Variance components  |              | Percentage of Variation (%) |              |
| Group Comparison | Among Group         | Within Group | Among Group                 | Within Group | Among Group          | Within Group | Among Group                 | Within Group |
| North vs. South  | 0.085               | 5.323        | 1.57                        | 98.43        | -0.0472              | 1.9411       | -2.49                       | 102.49       |

North and South refer to host mtDNA haplogroups.





possible, it is a less likely explanation, because even with horizontal transmission we would expect to see a geographic break in the *Wolbachia groEL* haplotypes, as we see for the host mtDNA haplotypes. An alternative hypothesis is that multiple females with different mtDNA haplotypes were initially infected. Although tests of the association between infection and mixed region host haplotypes were not significant (Randomization test,  $p = 0.17$ ), all but four of these host mtDNA haplotypes are found in, but not only in, the region where northern and southern host mtDNA haplotypes co-occur (See Additional file 1: Figure S4, Table S1). This suggests that the *wGff* Group 1 infection in Uganda may have started in the region where we observe mixed host haplotypes. Since these haplotypes are found throughout Uganda, the *wGff* infection may have spread from there via host dispersal and subsequent gene flow. Our genetic data support this hypothesis as *wGff* differentiation between fly populations with the two mtDNA haplogroups is low (Table 3). Furthermore, *wGff* prevalence is associated with host genetic groups defined by microsatellite loci [26].

While our data are suggestive of a mixed region origin, the mechanism is unclear. Maternal transmission of *Wolbachia* implies independent infection of each host mtDNA haplotype. Thus our data suggest that *wGff* in Uganda were repeatedly infected with *Wolbachia* (See Additional file 1: Table S1), a condition also supported by simulation studies as an initial transient phase in *Wolbachia* establishment in a new species [13,14], but never before observed empirically. Moreover, it is unlikely that flies dispersing from the mixed region are the sole source of *Wolbachia* infections in Uganda, as we find *wGff* with unique host mtDNA haplotypes (KK; Figure 1) from a distinct western Uganda tsetse group defined by nuclear microsatellite data ([29], See Additional file 1: Table S2). This suggests a second infection potentially from western Uganda. Interestingly, tsetse in Kakoga (KK) and in the Lake Victoria region (Figure 1) carrying rare mtDNA haplotypes are *Wolbachia*-infected, suggesting a relatively recent infection with a closely related *wGff*. Since these are rare host mtDNA haplotypes, too few *wGff* sequences are available to test this hypothesis.

The inclusion of *G. f. fuscipes* from a distant geographic location (DRC) with extremely divergent mtDNA from the Ugandan flies and from a colony population of a different subspecies (*G. f. quanzensis*) [49,50] infected by the two *Wolbachia* lineages (Figure 2) allows us to discuss three possible scenarios for the origin of the *Wolbachia* infection(s). First, infection by both *Wolbachia* lineages was widespread and pre-dates the sub-species divergence. This would lead to a correlation between *Wolbachia* and host mtDNA divergence [16,51], as we see in the maternally transmitted obligate symbiont, *Wigglesworthia* in the Ugandan *G. f. fuscipes* from the same regions [52]. We do not see this in *wGff*. Second, *Wolbachia* is shared between geographically disparate samples because there is extensive dispersal (and subsequent gene flow) among *G. f. fuscipes* populations. In such a case, we would expect to see *wGff* haplotypes associated with at least one widespread host haplotype. We find *wGff* associated with the most common host mtDNA haplotypes, but these host haplotypes are not widespread (Figure 4). Further, *wGff* is not associated with host genetic groups defined by mtDNA variation, but with those defined by nuclear variation, whose patterns likely originated via genetic drift, not gene flow from geographically distant populations [26,28,29]. Third, it is possible that there were multiple independent infections in *G. f. quanzensis* in DRC and in *G. f. fuscipes* in Uganda. Although our data appear to only support the last of these hypotheses, our sampling design does not permit us to specifically test any of these hypotheses. However, these hypotheses warrant investigation to understand *Wolbachia* infection dynamics in this species, as it can shed light on the general evolutionary dynamics of *Wolbachia* infections, which are not possible to address in other systems that do not have the viviparous life history traits of *Glossina* species.

#### Relevance to CI

In the presence of CI, *Wolbachia* is expected to be associated with few high frequency host mtDNA haplotypes [9]. In combination with data from [26], we found *Wolbachia* associated with 26 host mtDNA haplotypes. Of the approximately 40 mtDNA haplotypes found in Ugandan *G. f. fuscipes* [28,29], more than half are infected with *wGff* Group 1, and only three with *wGff* Group 2. Indeed, the host mtDNA haplotypes infected with Group 1 are some of the most common in Uganda (Figure 4), but the low sample size for some host mtDNA haplotypes, due to low infection density, makes it difficult to draw inferences about this pattern. Interestingly, in nearly all of the high frequency mtDNA haplotypes [28,29], *wGff*-infected individuals are more common than those that are not infected. Although these differences are not all significant, it suggests some fitness advantage for infected flies (Figure 4), consistent with occurrence of CI in *G. f. fuscipes*.

Unexpectedly, our data found *wGff* associated with rare mtDNA haplotypes, a result also supported by *Wolbachia* prevalence data (See Additional file 1: Figure S4, [29]): in 365 flies with known host mtDNA haplotype, *wGff* was associated with 12 extremely rare mtDNA haplotypes. CI-causing *Wolbachia* are expected to have higher fitness, driving associated host haplotypes to high frequency, as seen in some of the common *groEL* haplotypes in our dataset (See Additional file 1: Figure S4). Contrary to the typical observation of a single female driving an infection in insect populations, theoretical studies suggest that before CI can sweep *Wolbachia* through a population, multiple independent infections must occur [13,14]. It is possible that sweeps occur in other insects too rapidly to observe these multiple, independent infections and we may have captured *Wolbachia*, even in rare *groEL* haplotypes, due to the unique host life history.

Our genetic data do not provide evidence that bidirectional CI has shaped genetic variability in *G. f. fuscipes* [28,29]. Although Group 2 is primarily limited to southern host mtDNA haplotypes (Figure 3, See Additional file 1: Table S2), we found that this association was not significant ( $p = 0.16$ ). Furthermore, two superinfected individuals have northern host mtDNA haplotypes (JN18, JN6; *groEL* haplotype 37). This result is unexpected, if we assume solely maternal *Wolbachia* transmission, and suggests that Group 2 infections have either independently arisen in the northern host mtDNA haplotype lineage, or there is some horizontal transfer of Group 2 infections from southern *G. f. fuscipes* to individuals found in the northern mtDNA haplogroup. Horizontal transfer among different insect species must occur for *Wolbachia* to infect novel hosts, but horizontal transfer among different host species with closely related *Wolbachia* has rarely been empirically documented [53]. Since either horizontal transmission or independent infections appear to be common in *G. f. fuscipes*, genetic data may not be the ideal method to detect any form of CI as these processes may obscure host genetic patterns induced by *Wolbachia*. Furthermore, very few of our samples seem to be infected with Group 2 *Wolbachia*, potentially reducing our power to detect patterns. In contrast, we see some evidence that *wGff* is associated with the most common haplotypes (Figure 4), suggesting a potential fitness advantage of *wGff*. Thus, we suggest that it is crucial to examine transmission efficiency and perform laboratory mating experiments before excluding the possibility of bidirectional CI in *G. f. fuscipes*.

#### Conclusions

We investigated *Wolbachia* (*wGff*) genetic variability in the tsetse fly, *Glossina fuscipes fuscipes*, populations with known genetic composition and *Wolbachia* infection status in Uganda. Using four MLST loci, we identified two *Wolbachia* lineages, indicating superinfection

of *G. f. fuscipes*. Using the variable *groEL* gene, we confirmed the occurrence of superinfections and uncovered unprecedented sequence diversity within and between individuals. However, we do not find evidence that *Wolbachia* has influenced patterns of genetic diversity in Ugandan *G. f. fuscipes* populations through mechanisms like cytoplasmic incompatibility (CI). When compared to the host mtDNA, we found *wGff* associated with several host mtDNA haplotypes, suggesting independent acquisition of *wGff* infections. We hypothesize that high genetic variability in *wGff* may be a consequence of low-density *Wolbachia* infections and the observation of multiple independent infections may be associated with the unique tsetse life history.

## Additional file

**Additional file 1: Includes the expanded methodology for laboratory methods and data analysis.** Tables of detailed sample information for *G. f. fuscipes* and other insects, primers and diversity statistics for the complete dataset. Figures show MLST phylogeny and the haplotype networks for individuals, sampling sites and the complete dataset.

## Abbreviations

*wGff*: Any *Wolbachia pipientis* strain from *Glossina fuscipes fuscipes*;  
*groEL*: gene for heat shock protein 60; CI: Cytoplasmic incompatibility;  
MLST: Multi Locus Sequence Typing; mtDNA: mitochondrial DNA;  
HAT: Human African Trypanosomiasis; *G. f. fuscipes*: *Glossina fuscipes fuscipes*;  
*gatB*: gene for aspartyl/glutamyl-tRNA(Gln) amidotransferase, subunit B;  
*coxA*: gene for cytochrome c oxidase, subunit I; *fbpA*: gene for fructose-bisphosphatealdolase; *ftsZ*: gene for cell division protein; AMOVA: Analysis of Molecular Variance; *G. austeni*: *Glossina austeni*; *G. brevipalpis*: *Glossina brevipalpis*; *wsp*: gene for *Wolbachia* surface protein.;  $H_d$ : Haplotype diversity; *G. f. quanzensis*: *Glossina fuscipes quanzensis*; bp: base pairs.

## Competing interests

The authors declare that they have no competing interests.

## Authors' contributions

RES-Wrote and revised the manuscript and performed and interpreted data analysis, UA-carried out the laboratory analyses and collected the data. CB-Collected and analyzed the MLST data, and commented on the manuscript, YW-Extracted DNA and helped collect the molecular data, RE-Provided samples, LMO-Provided samples and facilitated sample collection, SA-Conceived the project and helped write the manuscript, AC-Helped write the manuscript and provided support for the analyses. All authors read and approved the final manuscript.

## Acknowledgments

This study was supported by NIH AI068932) and the Fogarty Center D43TW007391 and R03 TW008755 grants. Peter Takac (Slovakia Academy of Science, Bratislava, Slovakia) provided *G. f. quanzensis* samples.

## Author details

<sup>1</sup>Department of Ecology and Evolutionary Biology, Yale University, 21 Sachem St, New Haven, CT, USA. <sup>2</sup>Department of Biology, University of Mississippi, University, MS, USA. <sup>3</sup>Yale University School of Public Health, Department of Epidemiology and Public Health, New Haven, Connecticut, USA. <sup>4</sup>Department of Entomology, University of Kentucky, Lexington, Kentucky, USA. <sup>5</sup>Faculty of Science, Gulu University, Gulu, Uganda. <sup>6</sup>National Livestock Resources Research Institute, Tororo, Uganda.

Received: 27 October 2012 Accepted: 28 January 2013  
Published: 5 February 2013

## References

1. Hilgenboecker K, Hammerstein P, Schlattmann P, Telschow A, Werren JH: How many species are infected with *Wolbachia*?—A statistical analysis of current data. *FEMS Microbiol Lett* 2008, **281**:215–220.
2. Vasquez CJ, Stouthamer R, Jeong G, Morse JG: Discovery of a CI-inducing *Wolbachia* and its associated fitness costs in the biological control agent *Aphytis melinus* DeBach (Hymenoptera: Aphelinidae). *Biol Control* 2011, **58**:192–198.
3. Wang Z-y, Deng C, Yun Y-I, Jian C, Peng Y: Molecular detection and the phylogenetics of *Wolbachia* in Chinese spiders (Araneae). *J Arachnol* 2010, **38**:237–241.
4. Lo N, Paraskevopoulos C, Bourtzis K, O'Neill SL, Werren JH, Bordenstein SR, Bandi C: Taxonomic status of the intracellular bacterium *Wolbachia pipientis*. *Int J Syst Evol Microbiol* 2007, **57**:654–657.
5. Baldo L, Dunning Hotopp JC, Jolley KA, Bordenstein SR, Biber SA, Choudhury RR, Hayashi C, Maiden MC, Tettelin H, Werren JH: Multilocus sequence typing system for the endosymbiont *Wolbachia pipientis*. *Appl Environ Microbiol* 2006, **72**:7098–7110.
6. Brownlie JC, Cass BN, Riegler M, Witsenburg JJ, Iturbe-Ormaetxe I, McGraw EA, O'Neill SL: Evidence for metabolic provisioning by a common invertebrate endosymbiont, *Wolbachia pipientis*, during periods of nutritional stress. *PLoS Pathog* 2009, **5**:e1000368.
7. Kambris Z, Blagborough AM, Pinto SB, Blagrove MS, Godfray HC, Sinden RE, Sinkins SP: *Wolbachia* stimulates immune gene expression and inhibits plasmodium development in *Anopheles gambiae*. *PLoS Pathog* 2010, **6**:e1001143.
8. Werren JH, Baldo L, Clark ME: *Wolbachia*: master manipulators of invertebrate biology. *Nat Rev Microbiol* 2008, **6**:741–751.
9. Engelstadter J, Telschow A: Cytoplasmic incompatibility and host population structure. *Heredity (Edinb)* 2009, **103**:196–207.
10. Unckless RL, Boelio LM, Herren JK, Jaenike J: *Wolbachia* as populations within individual insects: causes and consequences of density variation in natural populations. *Proceedings of the Royal Society B: Biological Sciences* 2009, **276**:2805–2811.
11. Turelli M, Hoffmann AA, McKechnie SW: Dynamics of cytoplasmic incompatibility and mtDNA variation in natural *Drosophila simulans* populations. *Genetics* 1992, **132**:713–723.
12. Rasgon JL, Cornel AJ, Scott TW: Evolutionary history of a mosquito endosymbiont revealed through mitochondrial hitchhiking. *Proceedings of the Royal Society B: Biological Sciences* 2006, **273**:1603–1611.
13. Egas M, Vala F, Breeuwer JA: On the evolution of cytoplasmic incompatibility in haplodiploid species. *Evolution* 2002, **56**:1101–1109.
14. Jansen VA, Turelli M, Godfray HC: Stochastic spread of *Wolbachia*. *Proc Biol Sci* 2008, **275**:2769–2776.
15. Nunes MD, Nolte V, Schlotterer C: Nonrandom *Wolbachia* infection status of *Drosophila melanogaster* strains with different mtDNA haplotypes. *Mol Biol Evol* 2008, **25**:2493–2498.
16. Turelli M, Hoffmann AA: Rapid spread of an inherited incompatibility factor in California *Drosophila*. *Nature* 1991, **353**:440–442.
17. Mouton L, Henri H, Charif D, Bouletreau M, Vavre F: Interaction between host genotype and environmental conditions affects bacterial density in *Wolbachia* symbiosis. *Biol Lett* 2007, **3**:210–213.
18. Duron O, Fort P, Weill M: Influence of aging on cytoplasmic incompatibility, sperm modification and *Wolbachia* density in *Culex pipiens* mosquitoes. *Heredity (Edinb)* 2007, **98**:368–374.
19. Keeling MJ, Jiggins FM, Read JM: The invasion and coexistence of competing *Wolbachia* strains. *Heredity (Edinb)* 2003, **91**:382–388.
20. Flor M, Hammerstein P, Telschow A: *Wolbachia*-induced unidirectional cytoplasmic incompatibility and the stability of infection polymorphism in parapatric host populations. *J Evol Biol* 2007, **20**:696–706.
21. Telschow A, Yamamura N, Werren JH: Bidirectional cytoplasmic incompatibility and the stable coexistence of two *Wolbachia* strains in parapatric host populations. *J Theor Biol* 2005, **235**:265–274.
22. Dutton TJ, Sinkins SP: Strain-specific quantification of *Wolbachia* density in *Aedes albopictus* and effects of larval rearing conditions. *Insect Mol Biol* 2004, **13**:317–322.
23. Hurst GD, Johnson AP, Schulenburg JH, Fuyama Y: Male-killing *Wolbachia* in *drosophila*: a temperature-sensitive trait with a threshold bacterial density. *Genetics* 2000, **156**:699–709.

24. Cheng Q, Ruel TD, Zhou W, Moloo SK, Majiwa P, O'Neill SL, Aksoy S: **Tissue distribution and prevalence of Wolbachia infections in tsetse flies, *Glossina* spp.** *Med Vet Entomol* 2000, **14**:44–50.
25. Doudoumis V, Tsiamis G, Wamwiri F, Brelsfoard C, Alam U, Aksoy E, Dalaperas S, Abd-Alla A, Ouma J, Takac P, et al: **Detection and characterization of Wolbachia infections in laboratory and natural populations of different species of tsetse flies (genus *Glossina*).** *BMC Microbiol* 2012, **12**:53.
26. Alam UH, Chaz H, Symula RE, Brelsfoard C, Wu Y, Kruglov O, Okedi LM, Caccone A, Aksoy S: **Microfauna-host interactions: implications for trypanosome transmission dynamics in *Glossina fuscipes fuscipes* in Uganda.** *Appl Environ Microbiol* 2012, **78**:4627–4637.
27. Alam U, Medlock J, Brelsfoard C, Pais R, Lohs C, Balmant S, Carnogursky J, Heddi A, Takac P, Galvani A, Aksoy S: ***Wolbachia* Symbiont infections induce strong cytoplasmic incompatibility in the tsetse Fly *Glossina morsitans*.** *PLoS Pathog* 2011, **7**:e1002415.
28. Abila PP, Slotman MA, Parmakelis A, Dion KB, Robinson AS, Muwanika VB, Enyaru JC, Okedi LM, Aksoy S, Caccone A: **High levels of genetic differentiation between Ugandan *Glossina fuscipes fuscipes* populations separated by Lake Kyoga.** *PLoS Negl Trop Dis* 2008, **2**:e242.
29. Beadell JS, Hyseni C, Abila PP, Azabo R, Enyaru JC, Ouma JO, Mohammed YO, Okedi LM, Aksoy S, Caccone A: **Phylogeography and population structure of *Glossina fuscipes fuscipes* in Uganda: implications for control of tsetse.** *PLoS Negl Trop Dis* 2010, **4**:e636.
30. Echodu R, Beadell JS, Okedi LM, Hyseni C, Aksoy S, Caccone A: **Temporal stability of *Glossina fuscipes fuscipes* populations in Uganda.** *Parasites and Vectors* 2011, **4**.
31. Baldo L, Bordenstein S, Werngreen JJ, Werren JH: **Widespread recombination throughout Wolbachia genomes.** *Mol Biol Evol* 2006, **23**:437–449.
32. Thompson JR, Marcelino LA, Polz MF: **Heteroduplexes in mixed-template amplifications: formation, consequence and elimination by 'reconditioning PCR'.** *Nucleic Acids Res* 2002, **30**:2083–2088.
33. Cummings SM, McMullan M, Joyce DA, van Oosterhout C: **Solutions for PCR, cloning and sequencing errors in population genetic analysis.** *Conserv Genet* 2010, **11**:1095–1097.
34. Sawyer SA: **GENECONV: A computer package for the statistical detection of gene conversion.** In *Book GENECONV: A computer package for the statistical detection of gene conversion*. 181st edition.; 1999.
35. Jolley KA, Chan MS, Maiden MC: **mlstDbNet - distributed multi-locus sequence typing (MLST) databases.** *BMC Bioinforma* 2004, **5**:86.
36. Tamura K, Peterson D, Peterson N, Stecher G, Nei M, Kumar S: **MEGA5: molecular evolutionary genetics analysis using maximum likelihood, evolutionary distance, and maximum parsimony methods.** *Mol Biol Evol* 2011, **28**:2731–2739.
37. Casiraghi M, Bordenstein SR, Baldo L, Lo N, Beninati T, Werngreen JJ, Werren JH, Bandi C: **Phylogeny of *Wolbachia pipientis* based on *gltA*, *groEL* and *ftsZ* gene sequences: clustering of arthropod and nematode symbionts in the F supergroup, and evidence for further diversity in the *Wolbachia* tree.** *Microbiology* 2005, **151**:4015–4022.
38. Maddison DRaMWP: **MacClade4: Analysis of phylogeny and character evolution.** In *Book MacClade4: Analysis of phylogeny and character evolution*. 408th edition. City: Sinauer Associates; 2004.
39. Posada D: **jModelTest: phylogenetic model averaging.** *Mol Biol Evol* 2008, **25**:1253–1256.
40. Guindon S, Gascuel O: **A simple, fast, and accurate algorithm to estimate large phylogenies by maximum likelihood.** *Syst Biol* 2003, **52**:696–704.
41. Zwickl D: **Genetic algorithm approaches for the phylogenetic analysis of large biological sequence datasets under the maximum likelihood criterion.** The University of Texas at Austin, Section of Integrative Biology; 2006.
42. Rozas J: **DNA sequence polymorphism analysis using DnaSP.** *Methods Mol Biol* 2009, **537**:337–350.
43. Clement M, Posada D, Crandall KA: **TCS: a computer program to estimate gene genealogies.** *Mol Ecol* 2000, **9**:1657–1659.
44. Excoffier L, Smouse PE, Quattro JM: **Analysis of molecular variance inferred from metric distances among DNA haplotypes: application to human mitochondrial DNA restriction data.** *Genetics* 1992, **131**:479–491.
45. Arthofer W, Riegler M, Schneider D, Krammer M, Miller WJ, Stauffer C: **Hidden Wolbachia diversity in field populations of the European cherry fruit fly, *Rhagoletis cerasi* (Diptera, tephritidae).** *Mol Ecol* 2009, **18**:3816–3830.
46. Hughes GL, Allsopp PG, Brumbley SM, Woolfit M, McGraw EA, O'Neill SL: **Variable infection frequency and high diversity of multiple strains of *Wolbachia pipientis* in *Perkinsiella* planthoppers.** *Appl Environ Microb* 2011, **77**:2165–2168.
47. Atyame CM, Delsuc F, Pasteur N, Weill M, Duron O: **Diversification of *Wolbachia Endosymbiont* in the *Culex pipiens* Mosquito: Molecular Biology and Evolution;** 2011.
48. Sun X, Cui L, Li Z: **Diversity and phylogeny of *Wolbachia* infecting *Bactrocera dorsalis* (Diptera: tephritidae) populations from China.** *Environ Entomol* 2007, **36**:1283–1289.
49. Dyer NA, Lawton SP, Ravel S, Choi KS, Lehane MJ, Robinson AS, Okedi LM, Hall MJ, Solano P, Donnelly MJ: **Molecular phylogenetics of tsetse flies (Diptera: Glossinidae) based on mitochondrial (COL, 16S, ND2) and nuclear ribosomal DNA sequences, with an emphasis on the palpalis group.** *Mol Phylogenet Evol* 2008, **49**:227–239.
50. Dyer NA, Ravel S, Choi K-S, Darby AC, Causse S, Kapitano B, Hall MJR, Steen K, Lutumba P, Madinga J, et al: **Cryptic diversity within the major trypanosomiasis vector *Glossina fuscipes* revealed by molecular markers.** *PLoS Negl Trop Dis* 2011, **5**:e1266.
51. Shoemaker DD, Machado CA, Molbo D, Werren JH, Windsor DM, Herre EA: **The distribution of *Wolbachia* in fig wasps: correlations with host phylogeny, ecology and population structure.** *Proc R Soc London, Ser B* 2002, **269**:2257–2267.
52. Symula RE, Marpuri I, Bjornson RD, Okedi L, Beadell J, Alam U, Aksoy S, Caccone A: **Influence of host phylogeographic patterns and incomplete lineage sorting on within-species genetic variability in *Wigglesworthia* species, obligate symbionts of Tsetse flies.** *Appl Environ Microb* 2011, **77**:8400–8408.
53. Russell JA, Goldman-Huertas B, Moreau CS, Baldo L, Stahlhut JK, Werren JH, Pierce NE: **Specialization and geographic isolation among *Wolbachia* symbionts from ants and Lycaenid butterflies.** *Evolution* 2009, **63**:624–640.

doi:10.1186/1471-2148-13-31

**Cite this article as:** Symula et al.: *Wolbachia* association with the tsetse fly, *Glossina fuscipes fuscipes*, reveals high levels of genetic diversity and complex evolutionary dynamics. *BMC Evolutionary Biology* 2013 **13**:31.

**Submit your next manuscript to BioMed Central and take full advantage of:**

- Convenient online submission
- Thorough peer review
- No space constraints or color figure charges
- Immediate publication on acceptance
- Inclusion in PubMed, CAS, Scopus and Google Scholar
- Research which is freely available for redistribution

Submit your manuscript at  
www.biomedcentral.com/submit

