

METHODOLOGY ARTICLE

Open Access

# Quantification of biological network perturbations for mechanistic insight and diagnostics using two-layer causal models

Florian Martin\*, Alain Sewer, Marja Talikka, Yang Xiang, Julia Hoeng and Manuel C Peitsch

## Abstract

**Background:** High-throughput measurement technologies such as microarrays provide complex datasets reflecting mechanisms perturbed in an experiment, typically a treatment vs. control design. Analysis of these information rich data can be guided based on a priori knowledge, such as networks or set of related proteins or genes. Among those, cause-and-effect network models are becoming increasingly popular and more than eighty such models, describing processes involved in cell proliferation, cell fate, cell stress, and inflammation have already been published. A meaningful systems toxicology approach to study the response of a cell system, or organism, exposed to bio-active substances requires a quantitative measure of dose-response at network level, to go beyond the differential expression of single genes.

**Results:** We developed a method that quantifies network response in an interpretable manner. It fully exploits the (signed graph) structure of cause-and-effect networks models to integrate and mine transcriptomics measurements. The presented approach also enables the extraction of network-based signatures for predicting a phenotype of interest. The obtained signatures are coherent with the underlying network perturbation and can lead to more robust predictions across independent studies. The value of the various components of our mathematically coherent approach is substantiated using several in vivo and in vitro transcriptomics datasets. As a proof-of-principle, our methodology was applied to unravel mechanisms related to the efficacy of a specific anti-inflammatory drug in patients suffering from ulcerative colitis. A plausible mechanistic explanation of the unequal efficacy of the drug is provided. Moreover, by utilizing the underlying mechanisms, an accurate and robust network-based diagnosis was built to predict the response to the treatment.

**Conclusion:** The presented framework efficiently integrates transcriptomics data and “cause and effect” network models to enable a mathematically coherent framework from quantitative impact assessment and data interpretation to patient stratification for diagnosis purposes.

**Keywords:** Systems biology, Causal network model, Transcriptomics data

## Background

High-throughput measurement technologies provide comprehensive data sets to obtain insight on disease mechanisms and the biological impact of exposure to active substances, such as drugs and environmental toxicants. However, the scientific community faces an ongoing challenge to analyze and interpret these data sets and derive useful insights about the studied biological

systems. The analysis of high-throughput expression data typically leads to a list of differentially expressed genes. However, this approach often fails to provide mechanistic insights into the underlying biology. During recent years, researchers addressed the complexity of such data by evaluating them in a relevant biological context [1], whereby genes are grouped based on a priori knowledge such as MSigDB [2]. Sets of genes are then used by algorithms determining their specificity (or enrichment) in a particular experiment [3]. Kathri *et al.* [1] recently reviewed and categorized them into three main successive

\*Correspondence: florian.martin@pmi.com  
Philip Morris International, R&D, Biological Systems Research,  
Quai Jeanrenaud 5, 2000 Neuchatel, Switzerland

generations: over-representation analysis (ORA), functional class scoring (FCS) and pathway topology (PT). Unlike ORA approaches that only consider differentially expressed genes, FCS approaches, such as GSEA [2], take into account the entire dataset without applying thresholds. The development of PT approaches was motivated by the increasing evidence that interactions between genes or proteins better describe underlying molecular mechanisms [4]. These approaches allowed for a better use of pathway and network collections, such as KEGG, BioCarta, MIPS [5], the Database of Interacting Proteins (DIP) [6], and the Molecular Interaction database (MINT) [7]. The mapping of genes onto pathway or network representations has resulted in algorithms with better specificity because they account for the topology of the pathway or network [1,8]. Nevertheless, most currently available pathway tools rely on the “forward assumption”, where protein activity changes are assumed to be directly correlated with expression changes of their coding genes [9,10]. This assumption does not always hold [11-13]; furthermore calculations that are based on few genes may lack robustness. Table 1 shows some representative of methodologies relying on this assumption, and their key features.

In contrast, the “backward assumption” groups together the genes which have been described in the literature to be regulated by a given molecular entity, referred as to the upstream biological entity (UBE) (Figure 1b). UBEs are as diverse as transcription factors (as in [19] or [20]), protein activities, complexes or bioactive chemical compounds. Relationships between a given UBE and its regulated genes additionally include the sign (inhibition or activation) of the regulation. Such signed gene sets are also called HYPs, standing for “Hypotheses”, as described in [21]. Signed gene sets are leveraged by methodologies such as Reverse Causal Reasoning [21], modified GSA [22], by the network perturbation approach [23] (Table 1). UBEs can be further assembled into networks (Figure 1a), whereby an edge between two entities represents a cause-and-effect relationship, typically an activation or an inhibition. Network nodes may also include entities that are not known to regulate any genes. Thus, these network models have a two-layer structure, as shown in Figure 1a, where the functional level (the UBEs, called the backbone, in orange) is explicitly distinguished from the transcriptional level (the genes, in black). Recently, an ensemble of more than eighty such network models that consist of cause-and-effect relationships between molecular entities and activities (e.g. kinase activation or increased protein abundance) have been published [24-27] and made available to the community for peer-review [28]. The description of the biological context has been manually built into the network models using prior knowledge extracted from both relevant literature and published datasets after a large-scale knowledge

mining effort [21]. These networks describe biological processes such as cell proliferation, cell apoptosis and senescence, cell stress, and inflammation. Further biological processes can be described using cause-and-effect relationships from the OpenBEL framework [29]. OpenBEL is an open platform technology designed to collect cause-and-effect statements that can be further assembled into two-layer networks.

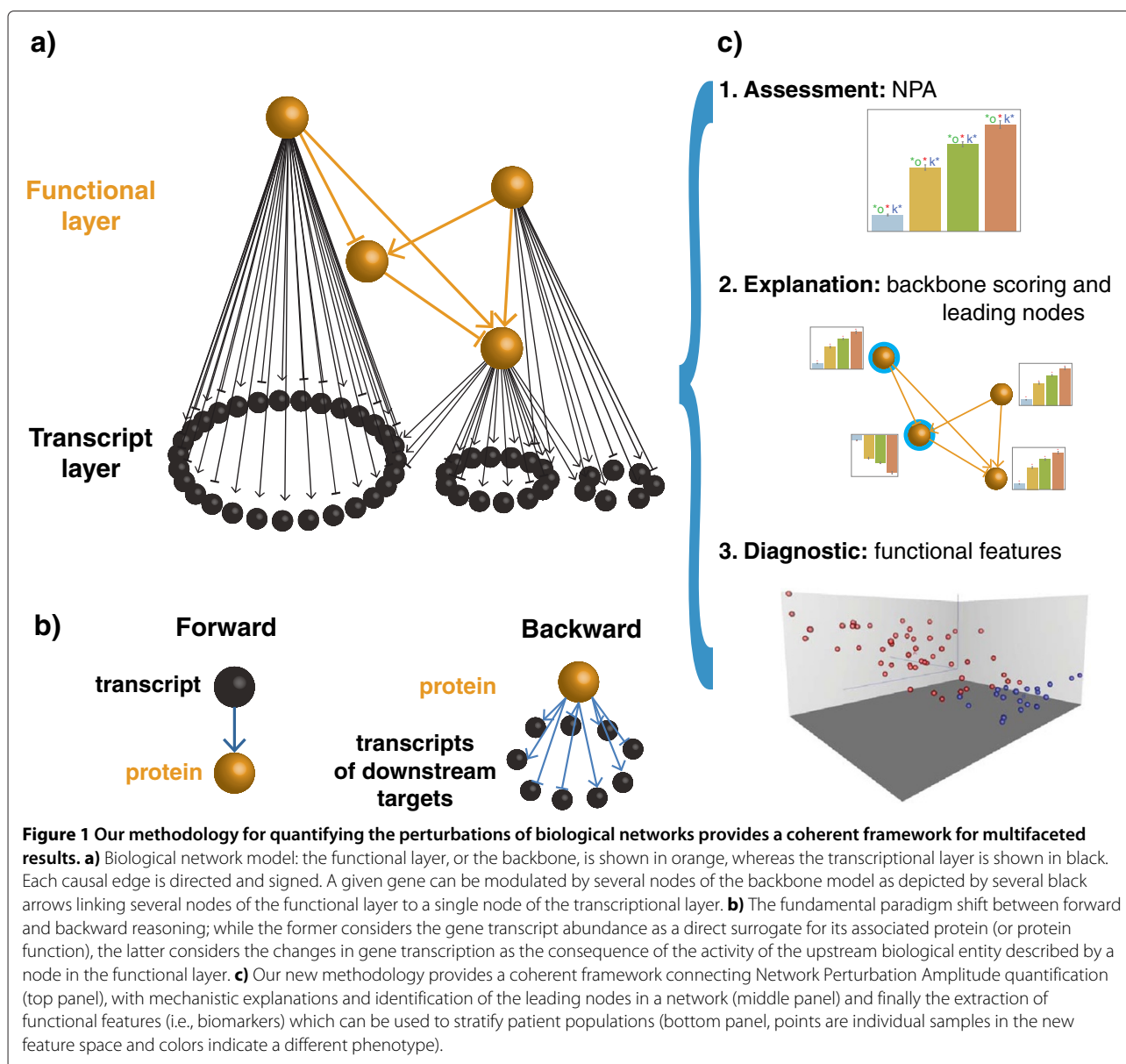
To assess qualitatively the enrichment of such networks, one could leverage the results of any (signed) gene set method testing the significance of the UBE's in the network and subsequently test the over-representation of the significant ones by a hypergeometric or binomial test. Under the backward paradigm, such a method would correspond to an ORA approach (Table 1) with the limitations discussed in [1], such as applying thresholds and ignoring inter-relationships between the entities in the network. In order to score a two-layer network, the entire network can be collapsed into a single signed gene set and an FCS approach that can handle signs (Table 1) can be applied. Martin *et al.* [23] followed this approach, using uniquely defined signs between entities in the network and a fixed reference node. This approach accounts only for a spanning tree of the network and disregards the rest of the topology, hence does not classify as a PT approach as such (Table 1). In a “proof-of-principle” study, using this method, we have quantified the perturbation of a given UBE based on high-throughput data [23] and showed that it correlates with independent assay endpoint. However, the applicability of the method is restricted to causally consistent networks (e.g., no negative feedback loops are allowed), and does not allow for the identification of the key drivers of the network perturbation. Identifying the key mechanisms responsible for the activation or perturbation of a network/gene set is a valuable feature of any methodology, leveraging either the forward or the backward assumption. For example, GSEA approaches extract the leading-genes of a scored gene set to serve as the basis for further interpretation. However many methods (including [23]) do not provide such a layer for interpretation (Table 1).

Gene expression data have been used to derive diagnostic signatures that inform clinicians on disease states or treatment outcomes. Majority of research has involved identifying and scoring signatures that are correlated with a disease phenotype [30,31]. Due to the high number of genes that are measured with high signal to noise ratio and genotypic variability across individuals, gene-level signatures often lack consistency between independent studies. Signatures may also lack biological meaning and interpretability because they are often derived from machine learning approaches that do not include a priori knowledge. A number of studies have shown that network markers tend to be more robust and more accurate when

**Table 1 Classification of the different methodologies and some of their representatives (see [1,14] for more exhaustive lists)**

Reasoning	Category	Method	Qualitative	Quantitative	Use topology	Interpretability	Diagnostic Sigs	Threshold-free	
Forward	ORA	Hypergeometric test [15]	✓						
		GSEA [2]	✓	(✓)		✓		✓	
	FCS	GSA [52]	✓	(✓)					✓
		PLAGE [16]	✓	(✓)					✓
		CORG [33]					✓	✓	✓
	PT	SPIA [46]	✓			✓			
		NetGen [17]	✓			✓			✓
		NetWalker [18]	✓			✓	✓		✓
		SVM-based [35]				✓		✓	✓
	Backward	ORA	RCR [21]	✓					
Modified GSA [22]			✓	✓				✓	
FCS		MARINa [20]	✓						✓
		NPA [23]	✓	✓					✓
PT		TopoNPA	✓	✓	✓	✓	✓	✓	

For each represented method, their properties are described. The method described in this study, TopoNPA, is to our knowledge the first backward PT methodology. ORA: Over-Representation Analysis, FCS: Functional Class Scoring, PT: Pathway Topology. (✓): with small modification.



pathways or protein-protein interaction networks were used as substrates to derive predictive signatures [32-38].

The objective of this research was to establish a computational methodology that can integrate gene expression data with a two-layer cause-and-effect network by using its full topology to identify, interpret and quantify the perturbation of the network in response to any treatment. The quantification of the network perturbation (and its significance) extends the concept of differential expression of single genes to the pathways or networks [8] and is of value in fields of toxicology and pharmacology [39], where dose and time response are studied. This approach goes beyond the enrichment approaches used in many pathway/network tools, which are focused on testing a non-enrichment null hypothesis [1,22,40]. The

quantification of the network perturbation in response to a treatment enables not only a comparison across several networks, but also a comparison between several treatments on the same network [41]. First, we applied our method to datasets and networks to compare the results qualitatively and quantitatively with the expected outcomes, as well as the results obtained when using other computational approaches. Second, based on one additional dataset derived from a controlled experiment involving the cell cycle, we showed that the key drivers identified by our method are aligned with the expected biology. Third, two additional public datasets were used to quantify the xenobiotic metabolism response to smoke exposure, identify the key drivers and derive a robust smoking exposure signature. The performance of our

network-based signature was compared to several recognized computational approaches. Finally, we applied our methodology to study the mechanisms underlying the unequal efficacy of an anti-inflammatory drug in patients suffering from ulcerative colitis and provide a plausible mechanistic hypothesis. Utilizing the underlying mechanisms, an accurate and robust network signature for predicting individual patient responses was generated. The signature over-performed those generated by other computational approaches.

## Methods

### Data

The data used in this study were either obtained from internal experiments that are described hereafter (Additional file 1) or downloaded from the public repositories such as Gene Expression Omnibus (<http://www.ncbi.nlm.nih.gov/geo/>) or ArrayExpress (<http://www.ebi.ac.uk/arrayexpress/>) (see Table 2). Raw RNA expression data were analyzed using the *affy* and *gcrma* packages of the Bioconductor suite of microarray analysis tools available in the R statistical environment (version 2.14.0). Robust Microarray Analysis (RMA) background correction and quantile normalization were used to generate probe set expression values. The fold-changes and their moderated t-statistics were computed using *limma* [42].

### Network models

Networks models are a representation of the relationships between the biological activities taking place in the considered cellular systems. They are based on information extracted manually from the scientific literature and encoded in the BEL syntax. BEL is a computable format for unambiguously capturing biological entities and their inter-relationships and associating them with external vocabularies and ontologies [29]. The nodes of the networks correspond to molecular biological entities (e.g., protein abundances, protein activities, chemical compounds and gene expression) and also include cellular

processes (e.g., apoptosis). The network edges connect two nodes and represent the cause-and-effect relationship between the corresponding entities (e.g., the transcriptional activity of NFKB directly increases the gene expression of BCL2). Edges are directed as a consequence of their causal nature. They are additionally signed, indicating whether the changes (increase or decrease) of the connected nodes have same ( $\rightarrow$ ) or opposite ( $\leftarrow$ ) signs. An ensemble of more than eighty such network models are made available at [28].

In the “backward-causal” paradigm, the changes in the activities of molecular biological processes, the UBE’s, can be inferred based on the changes measured for their causally “downstream” entities, in our case the differential expression of the genes causally affected by considered processes. For example, the activity of CYP1A1 is not measured but its change, between a treated and untreated condition, is reflected in the expression of the genes described to be altered by it (Figure 1a). Another example is the change in the activity of a transcription factor which is deduced from the changes in the expression of its direct targets, and not from the changes in the expression of its mRNA. This paradigm is becoming increasingly popular [21,23,43,44] and among others, “backward-causal” features have been introduced recently in Ingenuity Pathway Analysis software [43]. Using RNAi experimental data, Markowitz *et al.* showed that upstream pathway relationships between unobserved molecular entities can be reliably deduced from downstream measurable entities [45].

This is in contrast to the “forward-causal” approach, where the activity changes of a protein is approximated by the differential expression of its corresponding transcript (see Figure 1a). The number of “downstream” of a typical UBE is between a dozen and several hundreds. Additional details can be found in the Additional file 1.

In a nutshell, our networks models are made of signed gene sets (empty or not) related by signed directed edges. By definition of the two-layer structure there are no edges between genes in the transcript layer as we assume here

**Table 2 Overview of the datasets used**

Data ID	Tissue	Treatment
GSE7895	Bronchial Brushing	Smokers (30), non-smokers (20), former smokers (51)
GSE19667	Bronchial Brushing	Smokers (65), non-smokers (45)
GSE12251 & GSE1480	Colonic biopsies	Responders (20) and non-responders (27) pre-treatment
GSE16879	Colonic biopsies	Responders (8) and non-responders (16) pre-/post-treatment
E-MTAB-1842, GSE50254	Rat parenchyma	Main stream smoke (8, 15, or 23 $\mu$ g nicotine/l) or fresh air. 5 animals per group.
E-MTAB-1272	NHBE cells	2, 4, 6 and 8 hours after washing of CDK4/6 inhibitor. 3 samples per group.
E-MTAB-1311	NRBE cells	Vehicle control or TNF $\alpha$ (0.1, 1, 10, 100 ng/ml) $\times$ (30 min, 2 h, 24 h). 3 samples per group

GSE identifiers refer to datasets in Gene Expression Omnibus (GEO, <http://www.ncbi.nlm.nih.gov/geo/>) and E-MTAB identifiers to dataset deposited in ArrayExpress (<http://www.ebi.ac.uk/arrayexpress/>). The number of samples per group is indicated in parenthesis.

that relationships between genes are driven by the functional layer. An overview of network models used in this study is given in Table 3. One can observe that the size of the functional layer (a few dozen to hundred) is small as compared to the size of the transcript layer (several thousands of genes). The network models used in this study are further discussed in Additional file 1 and are available in the Additional file 2.

**The topological network perturbation amplitude scoring: TopoNPA**

Our method aims at reducing the high dimensional transcriptomics data by combining the gene expression ( $\log_2$ ) fold-changes into fewer differential backbone values (between a few dozen and two hundred). By definition of the two-layer structure, no measurements corresponding to nodes in the functional layer are available. The differential backbone values will be therefore determined by a fitting procedure that infers values that best satisfy the directional and signed relationships contained in the backbone model (Figure 1a, orange nodes and edges), while being constrained by the experimental data (the gene  $\log_2$ -fold-changes,  $\beta$ ) (Figure 1a, black nodes). An overview of the steps involved in the methodology is summarized in Figure 2.

**Objective and problem statement**

Let  $\mathcal{G} = (V, E, \sigma)$  be the signed directed graph underlying the biological network (where  $V$  is the set of vertices,  $E$  the set of edges, and  $\sigma : E \rightarrow \{+1, -1\}$  is the sign function) and let us assume that  $\mathcal{G}$  is strongly connected. The set of nodes of the transcript layer is denoted by  $V_0$  and its complement, the backbone, by  $V \setminus V_0$ .

For each negatively signed edge,  $x \dashv y$  (e.g., between the kinase activities of *AKT2* and *MAPK14*,  $kaof(AKT2) \dashv kaof(MAPK14)$ ), we assume that an additive change of  $\alpha \in \mathbb{R}$  in the value of  $x$  results in a change of  $-w(A, B) \cdot \alpha$  in the value of  $y$  where  $w(x, y) > 0$  is a weight associated with the edge. Similarly for positive relationships, a change of  $\alpha \in \mathbb{R}$  in the value  $x$  results in a change of  $w(x, y) \cdot \alpha$  in the value of  $y$ . In the absence of further information, the weights are assumed to be 1 as in many network-based approaches (e.g., [35,46]).

If the network model was perfectly representing the data, one could expect the values on  $V$ , denoted by  $f \in \mathbb{R}^2(V)^a$ , to satisfy all the “cause and effect” statements of the network model and, on  $V_0$ , to equal the computed fold-changes. Hence, being given the vector of ( $\log_2$ -) fold-changes  $\beta \in \mathbb{R}^2(V_0)$  for the genes in the transcript layer, the optimal fit of the network to the data is computed as the “smoothest” (in the sense of graph regularization [47]) vector  $f \in \mathbb{R}^2(V)$  such that its restriction (denoted by  $|_{\cdot}$ ) to the transcript layer is equal to the observed fold-changes  $f|_{V_0} = \beta$ . Therefore we solve the following optimization problem:

$$\min_{f \in \mathbb{R}^2(V)} \sum_{x \rightarrow y} (f(x) - \text{sign}(x \rightarrow y)f(y))^2 w(x, y)$$

such that  $f|_{V_0} = \beta$ ,

where  $w(x, y)$  is the weight associated with the edge bounded by  $x$  and  $y$ . This problem relates directly to a Dirichlet boundary condition problem in spectral graph theory [48].

Due to the fact that some biological entities of the backbone are more studied than others in the literature, UBE's with a lot of downstream genes (edges to the transcriptional layer) will have a very high degree in the graph, as compared other nodes in the backbone. To overcome this issue, the weights associated with the edges  $x \rightarrow y$  from a backbone node to its  $n_x$  downstream in the transcriptional layer (if existing) will be set to  $w(x, y) = \frac{1}{n_x}$ . Equivalently, all the genes have the same importance in describing the UBE's and therefore the out degree to the transcript layer of any UBE will be 1. This adjustment will value the backbone structure, which is intended to capture the biology and balances the importance of the backbone and the transcript layer (the latter being by far bigger than the former, see Table 3).

**Solution of the constrained optimization**

For  $x \in v$  let  $out(x)$  (resp  $in(x)$ ) be the weighted out (resp. in)-degree of the vertex  $x$ . Leveraging the quadratic nature of the problem, one can show that it is equivalent to:

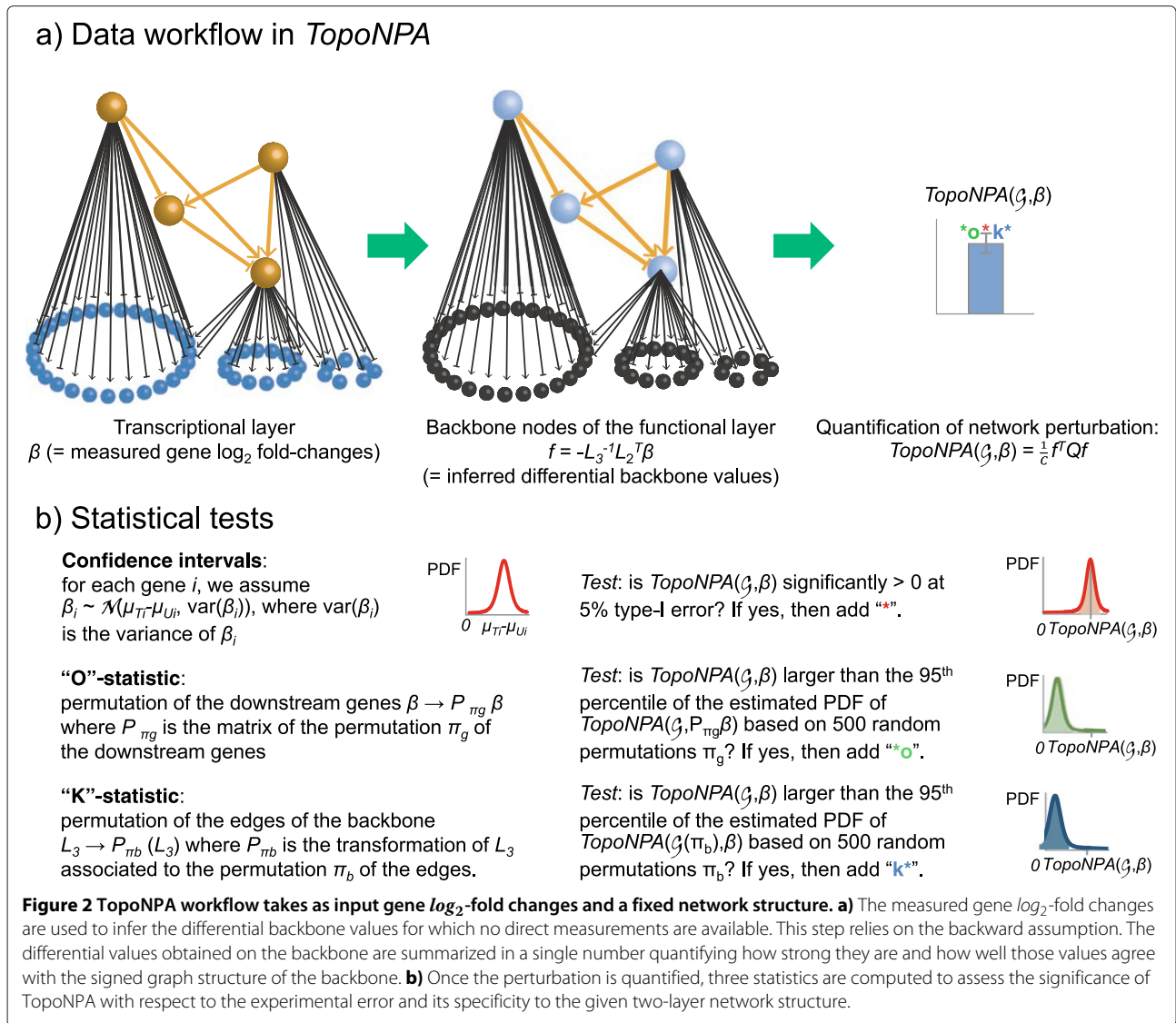
$$\min_{f \in \mathbb{R}^2(V)} f^T \left( \text{diag}(out) + \text{diag}(in) - (A + A^T) \right) f$$

such that  $f|_{V_0} = \beta$

**Table 3 Statistics for the networks used in this study**

	#Nodes	#Edges	#Nodes with downstream	#Genes involved
TNF-IL1 $\alpha$ -TLR-NF $\kappa$ B (Hs)	116	237	50	3874
TNF-IL1 $\alpha$ -TLR-NF $\kappa$ B (Rn)	116	237	50	3874
Cell Cycle (Hs)	127	240	57	8059
Xenobiotic metabolism (Rn)	31	49	20	2668
Xenobiotic metabolism (Hs)	34	53	21	2781

The network edges and nodes can be found in the Additional file 2.



where  $A$  is the signed weighted adjacency matrix defined by

$$A_{xy} = \begin{cases} \text{sign}(x \rightarrow y) \cdot w(x, y) & \text{if } x \rightarrow y \\ 0 & \text{else} \end{cases}$$

Even though the problem involves the directed edges only, the quadratic nature of the objective function leads to symmetric matrices and involves the matrix  $L = \text{diag}(\text{out}) + \text{diag}(\text{in}) - (A + A^T)$ , which is the signed Laplacian of the undirected graph; hence the directionality of the edges has no more importance at this stage.

Let  $L_3$  denote the sub-matrix of  $L$  whose rows and columns consist of the backbone nodes, and  $L_2$  the sub-matrix whose rows correspond to the backbone nodes and columns to the genes in the transcript layer. A straightforward differentiation with respect to  $f$  of the expression

above and using the constraint shows that the solution is given by

$$f|_{V \setminus V_0} = -L_3^{-1}L_2^T\beta$$

As  $L_3$  is weakly diagonal dominant and strictly diagonal dominant for at least one row (as the transcript layer is assumed to be non-empty) and as the underlying undirected backbone graph is assumed to be strongly connected,  $L_3$  is irreducibly diagonally dominant. Therefore, it will be non-singular, ensuring the existence and uniqueness of the solution.

Laplacian and related matrices, like the diffusion kernel on graphs, have been successfully used to prioritize disease genes or to assess pathway enrichment (see e.g., [46,49,50]) where the added value for accounting for the full network topology is demonstrated. Unlike these methods, where the data are mapped directly on a graph,

the problem solved here involves an additional boundary constraint as the smoothing is applied to the backbone network only.

### Quantifying the perturbation

The objective is to summarize into a single number, called Network Perturbation Amplitude, how well and how strongly the inferred values match with the network, with the aim to capture dose and time response of the network, typically in toxicological testing. If all the inferred differential backbone values are high and all the signed edges in the backbone are accommodated by those values (i.e., the objective function for the solution is low), the highest should be the perturbation of the network. Also, as the optimization problem is constrained, the differential backbone values can be relatively high, but still not accommodating well the edge signs. Based on this intuition, we concluded that the perturbation should be a function of the edges and not the nodes alone. Additionally, we should avoid canceling out (“destructive interference”) cumulative signed edge scores (for example when a network with all positive edges contains two subgraphs linked by a single edge, one with all positive values and the other with negative values, one could have a vanishing score while a single edge may be wrong). This situation, where subnetwork perturbations and network perturbation are inconsistent, could typically happen in [23]. Hence, our choice was to consider an “energy” (e.g., quadratic) analogue quantity for each edge. Therefore, the network perturbation amplitude is calculated using the differential backbone values,  $f|_{V \setminus V_0}$  and is defined as a positive number representing the cumulated “energy” of  $f|_{V \setminus V_0}$ ; i.e., each edge  $x \rightarrow y$  contributes to  $(f(x) + \text{sign}(x \rightarrow y)f(y))^2$ . This score will be consistent with the objective function minimized.

Formally this is defined by the Sobolev (semi-) norm on the graph  $(V, E, -\sigma)$ , normalized by the number of edges  $(C = |\{x \rightarrow y\}_{s.t. x, y \notin V_0}|)$  allowing for more direct comparison between models.

$$\text{TopoNPA}(\mathcal{G}, \beta) = \frac{1}{C} \sum_{\substack{x \rightarrow y \\ s.t. x, y \notin V_0}} (f(x) + \text{sign}(x \rightarrow y)f(y))^2 \cdot w(x, y) (*)$$

Unless explicitly stated,  $w(x, y) = 1$  for all the edges of the backbone. Following the argument above, this expression is a quadratic form  $\frac{1}{C} \cdot f|_{V \setminus V_0}^T Q f|_{V \setminus V_0}$ , where  $Q \in \mathbb{R}^{l^2(V \setminus V_0)}$  is defined by

$$Q = \left( \text{diag}(\text{out}|_{V \setminus V_0}) + \text{diag}(\text{in}|_{V \setminus V_0}) - (-A - A^T) \right) |_{\mathbb{R}^{l^2(V \setminus V_0)}}$$

This first step is described in Figure 2a.

### Vanishing of the TopoNPA score

Let  $\mathcal{G}_b^- = (V_b, E_b, \sigma_b)$  be the signed subgraph induced by  $V \setminus V_0$  (the backbone) and for which the sign function is defined by  $\sigma_b = -\sigma|_{E_b}$ . The signed Laplacian of  $\mathcal{G}_b^-$  is exactly  $Q$ . It follows directly from the Rayleigh quotients that the TopoNPA score is bounded by

$$0 \leq \frac{\|f|_{V \setminus V_0}\|^2}{C} \lambda_1(\mathcal{G}_b^-) \leq \text{TopoNPA}(\mathcal{G}, \beta) \leq \frac{\|f|_{V \setminus V_0}\|^2}{C} \lambda_n(\mathcal{G}_b^-) (**)$$

where  $\lambda_1(\mathcal{G}_b^-)$  (respectively  $\lambda_n(\mathcal{G}_b^-)$ ) is the smallest (respectively, largest) eigenvalue of  $Q$ .

Let us focus on the vanishing of  $\lambda_1(\mathcal{G}_b^-)$ . By definition, a graph is balanced if and only if all its cycles are positive. This property is called “causally consistent” in [23]. Equivalently,  $\mathcal{G}_b^-$  is balanced if there exists a partition  $V = V_1 \cup V_2$  such that every edge between  $V_1$  and  $V_2$  is negative and every edge within  $V_1$  or  $V_2$  is positive [51]. It follows from the Matrix-Tree theorem for signed graph, that  $\lambda_1(\mathcal{G}_b^-) = 0$  if and only if  $\mathcal{G}_b^-$  is balanced [51]. This implies in this case that the kernel of  $Q$  is exactly the subspace of constant functions  $f \equiv c$  on  $V_1$  and  $f \equiv -c$  on  $V_2$ , for any real  $c$ . As a formal consequence, if (and only if) the graph is balanced, a TopoNPA score can be zero while the backbone values are piecewise constant as described above; which rarely occurs due to the boundary constraint. The steps involved in building the TopoNPA score are depicted in Figure 2a.

### Confidence intervals

In order to derive confidence intervals for the differential backbone values and the TopoNPA score, we show that the covariance between the gene ( $\log_2$ )-fold-changes  $\beta$  (which is not the same as the covariance between the genes) vanishes under a weak assumption. Let  $(X, Y)$  be a pair of random variables describing two genes and let us assume that  $((X, Y)|_{\text{Untreated}}, (X, Y)|_{\text{Treated}}) \doteq (X^U, Y^U, X^T, Y^T) \sim \mathcal{N}((\mu_U, \mu_T), \Sigma_{UT})$ . The covariance between the fold-changes, where we have  $m_1$  (respectively,  $m_2$ ) i.i.d. samples in the treated (respectively, untreated) group, is given by:

$$\begin{aligned} \text{Cov} \left( \frac{1}{m_1} \sum_{i=1}^{m_1} X_i^T - \frac{1}{m_2} \sum_{i=1}^{m_2} X_i^U, \frac{1}{m_1} \sum_{j=1}^{m_1} Y_j^T - \frac{1}{m_2} \sum_{j=1}^{m_2} Y_j^U \right) \\ = \frac{1}{m_1 m_1} \sum_{i,j=1}^{m_1} \text{Cov}(X_i^T, Y_j^T) - \frac{1}{m_1 m_2} \sum_{i=1}^{m_1} \sum_{j=1}^{m_2} \text{Cov}(X_i^T, Y_j^U) \\ - \frac{1}{m_2 m_1} \sum_{i=1}^{m_2} \sum_{j=1}^{m_1} \text{Cov}(X_i^U, Y_j^T) + \frac{1}{m_2 m_2} \sum_{i,j=1}^{m_2} \text{Cov}(X_i^U, Y_j^U) \end{aligned}$$

Thus, assuming that there is no second order effect of the treatment (or equivalently homoscedasticity between



the treated and untreated groups,  $Cov(X^U, Y^U) = Cov(X^T, Y^T) = Cov(X^U, Y^T) = Cov(X^T, Y^U)$ , the above expression vanishes. Consequently, under this assumption,  $\beta \sim \mathcal{N}(\mu_T - \mu_U, diag(var(\beta_i)))$ ; which leads to the variance-covariance matrix of the backbone differential values  $var(-L_3^{-1}L_2^T\beta) = L_3^{-1}L_2^T diag(var(\beta_i))L_2(L_3^{-1})^T$ . As a consequence, the variance of a TopoNPA score can be computed as  $var(h^T Qh) = 2tr(Q\Sigma_2Q\Sigma_2) + 4\mu_2^T Q\Sigma_2Q\mu_2$  (where  $h = f|_{V \setminus V_0} \sim \mathcal{N}(\mu_2, \Sigma_2)$  and  $\Sigma_2 = var(f|_{V \setminus V_0})$ ). Asymptotically correct confidence intervals are then derived using the central limit theorem (Figure 2b).

### The companion statistics

Although a TopoNPA score can be highly significant with respect to the biological variation (lower limit of its confidence interval above zero), it does not imply that the gene fold-changes specifically reflect the network structure itself. In order to assess this aspect, two complementary permutation statistics are introduced: the “O” and the “K”-statistics. The ability to distinguish the specifically perturbed networks from the non-specific ones is key as a total of 89 sub-networks have been built to date and can be used simultaneously. These companion statistics quantify the relevance of the information contained in the network model in determining the score (Figure 2b).

“O” The first one assesses the adequacy of the downstream genes assignment (transcript layer) to the nodes of the backbone model by reshuffling the gene labels in the transcript layer. It tests the null hypothesis that the position of the genes in the transcript layer has no importance in defining the score. Therefore gene labels are permuted and the TopoNPA score is recomputed. This procedure is repeated  $B$  times (usually  $B = 500$ ) and a permutation p-value is derived.

“K” The second statistic assesses the importance of the cause-and-effect relationships encoded in the backbone of the network in extracting the TopoNPA scores. It tests the null hypothesis that the structure of the backbone has no importance in deriving the TopoNPA score. The edges of the functional layer are randomly permuted (together with their signs), differential backbone values are re-computed and TopoNPA is recomputed using the original matrix  $Q$ . This procedure is repeated  $B$  (usually  $B = 500$ ) times and a permutation p-value is derived.

The upper bound value on (\*\*\*) states that the highest possible value for the TopoNPA (for unit norm functions) is achieved by the eigenvectors for the largest eigenvalues of  $\mathcal{G}_b^-$ , which in spectral theory are called the high energy function on the graph. As the highest eigenvalue  $\lambda_n(\mathcal{G}_b^-)$  is invariant under the permutations described

above, the two statistics can be interpreted as testing if the smoothest function on  $\mathcal{G}_b$  satisfying the constraints given by the experimental data is also a high  $l^2$ -norm function and a high energy function (as compared to other random configurations of the network) on  $\mathcal{G}_b^-$ . Subsequently, the network is considered to be specifically perturbed if both p-values are low (usually 0.05). The TopoNPA results will always be interpreted in light of the three companion statistics: the two permutation p-values and its confidence interval.

### The leading nodes

To ease the interpretation of a significant perturbation, the major contributors in the sum (\*) can be identified. By sorting the terms in  $TopoNPA = \frac{1}{c} \sum_{x \in V \setminus V_0} (Qf|_{V \setminus V_0})(x) \cdot f|_{V \setminus V_0}(x)$ , one compute the contribution of any node  $y$  as  $100 \cdot \frac{\frac{1}{c}(Qf|_{V \setminus V_0})(y) \cdot f|_{V \setminus V_0}(y)}{TopoNPA}$  and rank those accordingly.

The key contributors to the perturbation, referred to as leading nodes (Figure 1c, middle panel) are by definition the nodes that make up 80% of the TopoNPA score. It both accounts for the differential backbone values themselves but also to the centrality of the nodes in the functional layer. While 80% is an empirical choice, we have observed that it is usually a promising start to interpret the perturbation and does not preclude, if for example all the contributions are almost equal, to use further ranked nodes. As demonstrated in the next section, the notion of leading nodes is a very useful way to interpret the perturbation; an appropriate understanding of the perturbed biology can only be achieved if the topology of the network and the differential values of the network nodes are equally taken into account.

### Deriving network signatures

As differential backbone values are obtained through a linear transformation of the fold-changes, individual gene expression profiles can be transformed into backbone values that can subsequently be used for the purpose of classification. For single samples, gene expression profiles are centered, leading to a differential value between the individual profile and the population average. So to map the individual sample data  $X$  (genes x samples matrix) to the backbone, we simply compute  $B = -L_3^{-1}L_2^T X$ . This new data matrix will serve as the basis for the classification tasks. As this linear transform does not depend on the data, cross-validation schemes can be performed on the transformed data  $B$ . The linearity of this transformation ensures that the differential backbone values obtained from the fold-changes are the same as the difference of the average backbone values of the individual mappings. The latter property is important for the coherence of the TopoNPA framework. This step of the methodology depicted in Figure 1c, bottom panel, where points

represent samples, colors code for different phenotypes and axes illustrate the backbone nodes.

#### **Comparison to quantification/enrichment methods**

Comparing gene set/pathway analysis methods in a real experiment is not straightforward because no quantitative performance metrics (like e.g., ROC, Sensitivity, Specificity) are applicable as the “ground truth” is unknown. However, the methods can be compared based on how well their results fit with the existing biological knowledge. This type of assessment is the current best practice in this area [2]. In each use-case, two aspects will be compared to the expected biology: the presence or absence of an enrichment, based on the significance (qualitative) and the dose(/time)-response patterns (quantitative).

As our method is developed with the aim to exploit the specific two-layer structure of cause-and-effect networks, it was compared to the results of methodologies using the same structure, obtained by straightforward adaptations of existing approaches. Those ones belong to three categories [1]:

*Forward FCS approaches:* Gene-set enrichment methodologies are applied to the set of genes in the transcript layer. Following [22], several combinations of gene-level statistics and gene set enrichment statistics are used. For the gene-level statistics, moderated-t statistics and fold-changes are considered; the former being the canonical choice in FCS enrichment approaches and the latter being the statistics used in TopoNPA. For the enrichment statistics (denoted *ES*, in Additional file 1: Figure S1 and S3), we used the mean, maxmean [52], and GSEA [2].

*Backward ORA approaches:* A straightforward approach to test the enrichment of a two-layer network model is to test the enrichment of each UBE in the functional layer by RCR [21], which is specifically designed for UBE’s and subsequently test the enrichment of the network by a hypergeometric test. The overall “perturbation” is defined as  $-\log_{10}(p - \text{value})$ .

*Backward FCS approaches:* Another approach is to test the enrichment of each UBE in the functional layer (as a signed gene set, by multiplying each gene statistics by the sign of the edge from the UBE to the gene) and subsequently test the enrichment of the significant UBE’s by a hypergeometric test. To quantify the perturbation of the functional layer one simply considered the sum of squared enrichment scores of the UBE’s (denoted *SS(ES)* in Additional file 1: Figure S2 and S4). To test the enrichment of UBE’s, the same combinations of gene-level statistics and enrichment statistics described above were used.

The results were also compared to our previous methodology, NPA [23].

#### **Comparison to signature methods**

The comparison between feature selection (i.e., extracting a subset of genes) and feature construction was the main aspect considered. Hence the performance across different machine learning methods (for a fixed set of features) was not the main focus of this work.

Our results were compared to the classification performances of the following computational methods. The first method, not using any of the network information, was the method of the winning team of the IMPROVER Diagnostic Signature Challenge [53,54], referred to as, *tForwardLd*. The first step of the method is to order the features by absolute values of the associated moderated t-statistics. In a second step, the predictors are used one after the other in a LDA model based on this ordering (i.e., LDA based on the first predictor, the two first, three first and so on). At each step an internal cross-validation is computed and the final set of features is selected accordingly. The selection step of this method is included within the cross-validation instances performed in the comparison study to avoid any selection bias in the performance assessment. This methodology was applied on the full set of genes and on the genes in the transcript layer only.

As highlighted in [53] as a take home message of the SBV IMPROVER Diagnostic Signature Challenge, the choice of the base classifier should not impact the prediction performance as much as the choice (either selection or construction) of the features. This observation has led us to choose Linear Discriminant Analysis (LDA), linear support vector machine (SVM), random forests (RF) [55] and, Nearest Shrunken Centroids (NSC) [56] as the base classifiers. In every instance, NSC algorithm cross-validation results were obtained by selecting the shrinking parameter by an internal cross-validation within each cross-validation step.

A more sophisticated methodology, the COndition Responsive Genes (CORG) approach [34] using the UBE’s was also compared. In this approach, one new feature for each UBE is constructed and a classifier is applied on the resulted set of features. Again, the feature construction step is included within each cross-validation step as it depends on the training data.

Finally, LDA or NSC prediction models derived from the genes underlying each UBE individually was build and the best one (based on the cross-validated G-performance (which is the geometric mean between sensitivity and specificity)) was reported.

The extraction of the differential backbone values for individual samples is a purely unsupervised computation and only involves a fixed linear transform of the data

$(-L_3^{-1}L_2^T)$ . Therefore, the cross-validation for classifiers based on the backbone values is equivalent to the cross-validation on the original samples for the combination of the mapping to the backbone values and the classifier. All cross-validations are 10-fold cross-validation, averaged over 5 repetitions.

## Results

### TopoNPA distinguishes specific from irrelevant perturbations and enables dose-response calculations

We first evaluated the ability of TopoNPA to capture quantitatively a network perturbation and the companion statistics to distinguish specific from irrelevant perturbations. For that purpose, networks and datasets were chosen where clear biological expectations were available. Those biological expectations will serve as the basis for comparing TopoNPA to other methods.

#### *Description of the data and networks*

The xenobiotic metabolism network is part of the cell stress model, representing the response to external stressors for non-diseased tissue with a focus on the pulmonary and cardiovascular systems [24]. Representing an unrelated mechanism, the TNF-IL1 $\alpha$ -TLR-NF $\kappa$ B network model, including the toll-like receptors (TLRs), interleukin-1A (IL1A) and tumor necrosis factor- $\alpha$  (TNF) arms, covers the major signaling pathways that lead to Nuclear Factor- $\kappa$ B (NF $\kappa$ B) activation in response to inflammation [57].

The first dataset (E-MTAB-1842, GSE50254) was derived from a 28-day cigarette smoke inhalation experiment conducted in rats and was expected to show perturbation in both networks, because cigarette smoke is a known inducer of inflammation and xenobiotic metabolism in the rat respiratory tract [58]. We have also used a second dataset (E-MTAB-1311) from rat large airway progenitor cells (RLAK) treated with increasing doses of TNF for 0.5, 2, and 24 hours.

In the first experiment, a dose response of the TNF-IL1 $\alpha$ -TLR-NF $\kappa$ B network activation was expected [59]. Similarly, the activation of the xenobiotic metabolism response network was expected to follow a dose response pattern [58]. In the second experiment, the TNF response was monitored by measuring the nuclear translocation of NF $\kappa$ B after treatment at 0.5 hours (data not shown) and led to expect a significant network perturbation amplitude evolving in a dose and time dependent manner. Finally, no xenobiotic metabolism response was expected in this second experiment. The comparison of the results will be performed based on those biological expectations.

#### *Comparison to other quantification/enrichment methods*

The perturbation of the TNF-IL1 $\alpha$ -TLR-NF $\kappa$ B network was evident in the rat lung parenchyma when the rats

were exposed to smoke as compared to the sham-treated animals (Figure 3a). Similarly, the network was activated in TNF treated RLAK cells in a dose and time dependent manner (Figure 3c). The examination of the p-values revealed a perturbation of the network even with small doses and short TNF treatment times. By contrast, while the biological processes represented in the xenobiotic metabolism network were clearly activated, following an expected dose-response pattern, in the smoke-exposed rat parenchyma (Figure 3b), the companion statistic p-values indicated that they were not specifically perturbed in RLAK cells, by any TNF treatment dosage or time (Figure 3d).

None of the tested method was able to both qualitatively and quantitatively match the biological expectations for those use cases, as summarized in Table 4 (and Additional file 1: Figure S1 and S2). The NPA methodology in [23] was also applied to the TNF-IL1 $\alpha$ -TLR-NF $\kappa$ B network and shows a slightly inferior behavior (Additional file 1: Figure S5). Additionally, as the xenobiotic metabolism network is not causally consistent (e.g., due to the negative edge from the node taof(AHR) (“transcriptional activation of nuclear Aryl Hydrocarbon Receptor”) to AHRR (“Aryl Hydrocarbon Receptor Repressor”), this approach was not applicable and further motivated our method that does not assume causal consistency of the backbone.

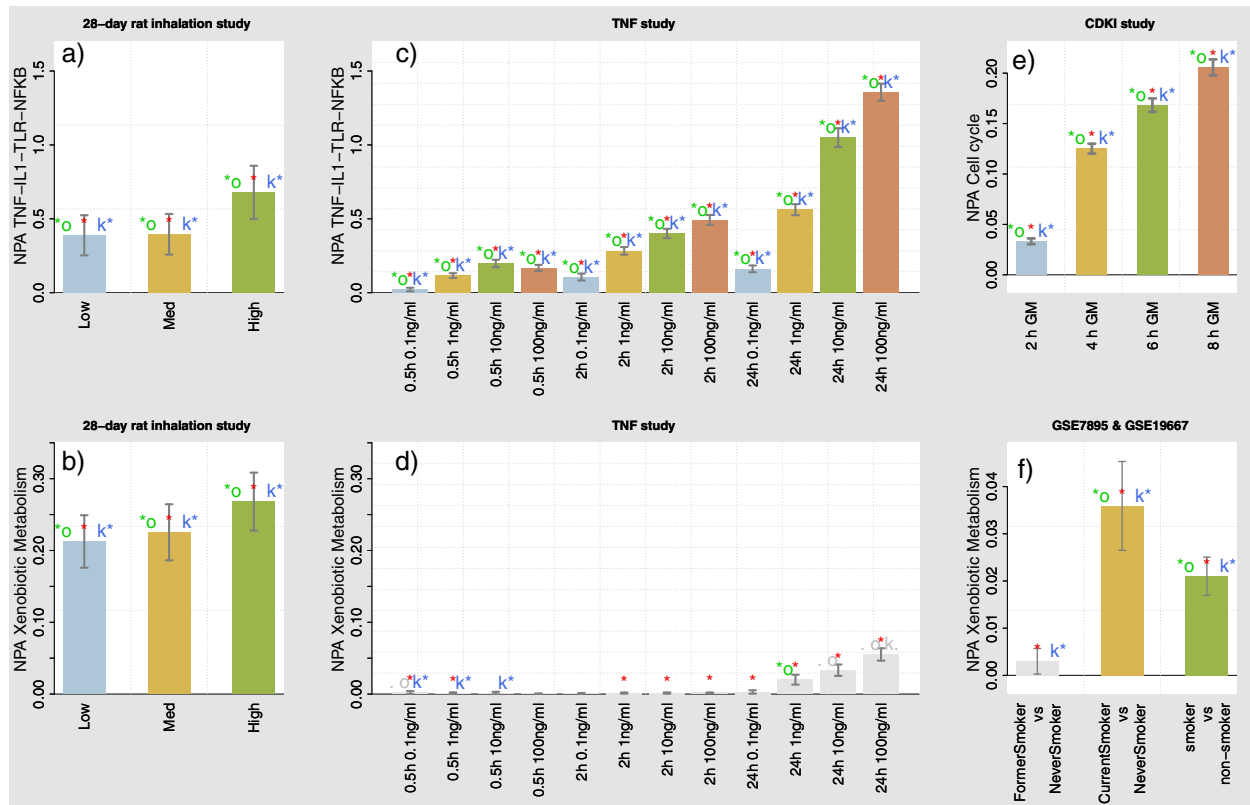
In summary, these examples demonstrate that the network perturbation quantifications are able to capture dose and time dependent response, and that, from a qualitative prospective, the developed companion statistics of the method are able to differentiate perturbed from non-perturbed biological processes.

#### **Leading nodes provide a mechanistic understanding of the perturbation**

To assess the ability of our approach to elucidate the driving biological mechanisms in a given network, we applied our methodology to a transcriptomics dataset reflecting the entry to S-phase of the cell cycle, which is a well described mechanism.

#### *Description of the data and networks*

Normal Human Bronchial Epithelial (NHBE) cells were treated with a CDK inhibitor (PD-0332991), thereby arrested in G1-phase, and then allowed to re-enter the cell cycle by inhibitor washout. In this experiment, the re-entry to the cell cycle was confirmed by Fluorescence Activated Cell Sorting (FACS) analysis of the S-phase cells at 2, 4, 6, and 8 hours after CDK-inhibitor washout (Additional file 1: Figure S9a) and showed a time-response in the increased activity. Transcriptomics data were generated for all time-points with (INH+GM (growth medium only)) and without (INH+INH) inhibitor washout (E-MTAB-1272). We have used our methodology to



**Figure 3 TopoNPA scores and statistics.** Panels **a**) and **b**): 28-day rat inhalation study, parenchyma tissue. The two network, xenobiotic metabolism and TNF-IL1a-TLR-NFκB are perturbed across Low, Medium and High dose of cigarette smoke exposure. Panels **c**) and **d**): TNF treatment on RLAK cells. TNF-IL1a-TLR-NFκB network is perturbed in a dose and time dependent manner, while the xenobiotic network is not perturbed at any dose or time point. Panel **e**) The TopoNPA scores indicate an increased activation of the cell cycle processes as a function of recovery time after inhibitor washout (INH+GM vs. INH+INH). The perturbation is significant for all companion statistics at all time points. Panel **f**) NPA of the xenobiotic network for the comparisons of former smoker vs. never smoker (left bar) and current smoker vs. never smoker (middle bar) in GSE7895. The right bar shows the latter comparison in GSE19667. The significance at 0.05 level of the "O" and "K" statistics are indicated by "\*o" and "\*k". A grey "o" or "k", indicates a P-value between 0.05 and 0.1. The significance with respect to the experimental variation is indicated by a red star or equivalently can be assessed with the confidence intervals.

analyze network perturbation of the cell cycle network model, which is a subnetwork of the previously published cell proliferation model [25] which comprises 127 nodes and 240 edges (see Additional file 2).

#### Comparison to other quantification/enrichment methods

TopoNPA scores for the appropriate fold-changes (INH+GM vs. INH+INH for each time point) are shown in Figure 3e). As expected, the scores reflected a time-dependent increase in the activation of the cell cycle following inhibitor washout, matching the increasing pattern from the FACS analysis (Additional file 1: Figure S9a)). The increase was significant for all companion statistics at every time points, indicating a specific perturbation of the network. In Table 4 (and Additional file 1: Figure S3), we observed that considering the transcript layer as a gene set and using a Forward FCS approach was not efficient. This is due to the fact that

more than 8'000 genes are underlying this network (Table 3). Besides TopoNPA, the backward FCS approach based on the "fc/maxmean" enrichment statistics matched the best the expectations. However, it failed to quantify a positive activation of the cell cycle after 2 hours. The cell cycle model contains many negative feedback loops, hence is not causally consistent, preventing the use of [23].

#### Leading nodes interpretation

While the cell cycle subnetwork encompasses all phases of the cell cycle, the leading node analysis (Table 5) were used to identify the key mechanisms that are relevant for re-entry into S-phase. E2F and its binding partner TFDP-1 were the most important nodes in all post-washout time-points that we analyzed, and the activity of the E2F/TFDP1 complex is essential in regulating progression through the cell cycle [60]. In

**Table 4 Comparison of the qualitative and quantitative behaviors of the network “perturbation” to the expected behavior in the various datasets and studies**

Category	Gene-level statistics	Enrichment statistics	28-day rat inhalation TNF-IL1-NFKB	28-day rat inhalation xenobiotic	RLAK study TNF-IL1-NFKB	RLAK study Xenobiotic	CDKi study cell cycle	Complete match with biological expectations
Forward FCS	t	mean	x/√	x/√	√/(√)	/x	x/√	0
		maxmean	x/x	(√)/√	x/x	/x	x/√	0
		GSEA	x/x	x/√	x/(√)	/√	x/√	0
	fc	mean	(√)/√	(√)/√	(√)/√	/x	x/√	0
		maxmean	√/√	√/√	(√)/(√)	/x	x/√	2
		GSEA	x/√	x/√	x/(√)	/x	x/√	0
Backward ORA	fdr	RCR	x/x	√/x	x/x	/√	√/x	1
Backward FCS	t	mean	x/x	x/√	x/x	/√	√/(√)	1
		maxmean	x/x	x/(√)	x/x	/√	√/x	1
		GSEA	x/x	x/√	x/x	/√	√/x	1
	fc	mean	(√)/(√)	√/(√)	√/(√)	/√	√/(√)	1
		maxmean	√/√	√/x	√/√	/√	√/(√)	3
		GSEA	x/√	x/√	x/x	/√	√/x	1
		NPA	(√)/√	na	√/√	na	na	1
Backward PT	fc	TopoNPA	√/√	√/√	√/√	/√	√/√	5

A √ indicates that the result corresponds to the biological expectation, a (√) indicate that up to one exception it matches the expectation, a x indicates that it does not match the expectation, and “/” means that the aspect is unimportant in the case-study. Finally, “na” indicates that the method does not apply. Each use case is assessed for its quantitative (the first symbol) and its qualitative (second symbol) aspects. The comparison scheme is discussed in the material and methods and the table is derived from Figures S1-S5. Overall, TopoNPA behaves as expected and is the only method fully matching the expectations.

**Table 5 Rank and direction of change of the leading nodes for the cell cycle network in the CDKi experiment**

	2 h INH+GM	4 h INH+GM	6 h INH+GM	8 h INH+GM
taof(E2F2)	2 (+)	1 (+)	1 (+)	1 (+)
taof(TFDP1)	1 (+)	2 (+)	2 (+)	2 (+)
taof(E2F3)	4 (+)	3 (+)	3 (+)	3 (+)
taof(E2F1)	5 (+)	4 (+)	4 (+)	4 (+)
TFDP1	3 (+)	5 (+)	6 (+)	6 (+)
taof(RB1)	6 (-)	6 (-)	5 (-)	5 (-)
G1/S transition of mitotic cell cycle	7 (+)	7 (+)	7 (+)	8 (+)
CDC2	8 (+)	8 (+)	9 (+)	9 (+)
THAP1	13 (-)	9 (-)	8 (-)	7 (-)
CDKN1A	12 (-)	10 (-)	10 (-)	10 (-)
E2F2	9 (+)	12 (+)	13 (+)	14 (+)
kaof(CDK2)	15 (+)	11 (+)	11 (+)	12 (+)
kaof(CDC2)	16 (+)	14 (+)	12 (+)	13 (+)
CCNE1	11 (+)	15 (+)	16 (+)	19 (+)
taof(MYC)	18 (+)	16 (+)	15 (+)	15 (+)
CCNA2	10 (+)	13 (+)	17 (+)	25 (+)
taof(FOXM1)		27 (+)	14 (+)	11 (+)
Cell proliferation	19 (+)	19 (+)	18 (+)	18 (+)
kaof(CDK4)	22 (+)	17 (+)	21 (+)	21 (+)
CCNB1		24 (+)	20 (+)	17 (+)
CCNB2		26 (+)	19 (+)	16 (+)
RB1	20 (-)	20 (-)	22 (-)	22 (-)
CDKN1B	21 (-)	18 (-)	25 (-)	24 (-)
CDK4		23 (+)	23 (+)	23 (+)
SKP2			26 (+)	20 (+)
E2F3	14 (+)	21 (+)	27 (+)	31 (+)
CDKN2A	17 (-)	25 (-)	30 (-)	
CCND1		22 (+)	24 (+)	26 (+)
kaof(CDK6)		28 (+)	28 (+)	28 (+)
MYC			29 (+)	27 (+)
FOXM1				29 (+)
ZBTB17				30 (+)
taof(SMARCA4)			31 (-)	
taof(E2F4)			32 (-)	
CDC25C				32 (+)
CDK2				33 (+)
CDC25B				34 (+)

agreement with the literature, several factors known to favor G1 arrest were leading nodes and were predicted to have a decreased activity following washout. These included CDK inhibitors CDKN1A (p21CIP1), CDKN1B

(p27KIP1), and CDKN2A (p16INK4A) [61,62] and the retinoblastoma protein (Rb) that forms a complex with E2F, resulting in an inactive or actively repressive complex. Upon phosphorylation by the CDKs, Rb is released from E2F, allowing it to drive entry into S-phase [63-65].

In summary, the TopoNPA could identify and quantify the activation of the cell cycle network upon inhibitor washout, and capture the essential molecular mechanisms involved in the G1 to S transition.

#### TopoNPA-based diagnostic signatures provide interpretable and robust predictions

To demonstrate how TopoNPA can be employed to derive robust network signatures, we predicted the smoking status of individuals based on the xenobiotic metabolism network using transcriptomics data from bronchial brushing. As mentioned above, the activation of the xenobiotic metabolizing machinery is the main immediate cellular response to combat environmental stressors. In respiratory tissue, the activation of this cellular defense system is highly sensitive and strictly controlled at the transcriptional level by the regulation of the Aryl Hydrocarbon Receptor (AHR) activity. Therefore, the activation of this cellular defense system may be a suitable marker to capture the actual exposure of the target tissue to environmental stressors such as cigarette smoke. The first data set (GSE7895, [66]) was derived from bronchial brushing of “current smokers”, “former smokers” and “never smokers” samples, as described by Beane *et al.* The second data set (GSE19667, [67]) was generated from small airway epithelium samples obtained by bronchoscopy from smokers and non-smokers.

#### Quantification of the xenobiotic network response

The first step was to compute the TopoNPA scores for the transcriptomics changes between current smoker and never smokers to confirm the activation of the xenobiotic metabolism machinery. For GSE7895, we also compared former smokers with never smokers. The obtained scores were clearly elevated for the current smokers in both data sets (Figure 3f), while the absolute scores of the two data sets were unequal. Such differences may be due to short or long term smoking histories or the distinct cell types which compose the two samples (large vs. small airways) [68]. The former smokers comprised in the GSE7895 data set exhibited a TopoNPA score similar to never smokers probably because the xenobiotic metabolism is no longer activated in former smokers as can be easily seen in the changes in gene expression [66,69].

#### Interpretation based on the leading nodes

The second step in our process was to identify the leading xenobiotic metabolism network nodes congruent with the two data sets.

Despite the difference in absolute TopoNPA score, the leading node lists derived from the two datasets were very similar (Table 6), taof(AHR) (“transcriptional activation of Aryl Hydrocarbon Receptor”) being the most highly ranked leading node. Leading nodes such as Diesel Exhaust Particles, Polycyclic Aromatic Hydrocarbons (PAH) (also found in cigarette smoke), and Particulate Matter represent stimuli that initiate signaling cascades similar to those known to be triggered by cigarette smoke. These include the catalytic activity (“catof”) of the P450 family enzymes (catof(CYP1B1), catof(CYP1A1), catof(CYP1A2)) [70] leading to the production of Reactive Oxygen Species (ROS) [71] as well as taof(AHR) [72], all highlighted as leading nodes. Finally, CYP2E1 activity (oxof(CYP2E1) “oxidase-like activity of CYP2E1”), also known to be activated by cigarette smoking [70,73], is a leading node. By definition of the leading nodes, each of these entities are the processes in the backbone that are both highly perturbed and central in the network and altogether explain the network perturbation.

#### **Network-based signature extraction and comparison to other methods**

We next transformed the individual gene expression data into network differential backbone values. Extracting the xenobiotic-relevant biology with the network backbone enables a supervised mechanism-based separation of the smoker and never-smokers groups. The comparisons

**Table 6 NPA leading nodes of the xenobiotic network for the comparison current smoker vs. never smoker, all are positive**

Rank	GSE7895	GSE19667
1	<b>taof(AHR)</b> (+)	taof(AHR) (+)
2	Reactive Oxygen Species (+)	<b>Diesel exhaust particles</b> (+)
3	<b>Diesel exhaust particles</b> (+)	<b>Reactive Oxygen Species</b> (+)
4	<b>taof(NFE2L2)</b> (+)	<b>NFE2L2</b> (+)
5	<b>NFE2L2</b> (+)	<b>taof(NFE2L2)</b> (+)
6	<b>8-Methyl-IQX</b> (+)	<b>8-Methyl-IQX</b> (+)
7	<b>AHR</b> (+)	Polycyclic Aromatic Hydrocarbons (+)
8	oxof(CYP2E1) (+)	catof(CYP1B1) (+)
9	Polycyclic Aromatic Hydrocarbons (+)	CYP1A1 (+)
10	catof(CYP1B1) (+)	catof(CYP1A2) (+)
11	catof(CYP1A2) (+)	catof(CYP1A1) (+)
12	CYP1A1 (+)	Particulate Matter (+)
13	catof(CYP1A1) (+)	Soot (+)
14	<b>Soot</b> (+)	<b>AHR</b> (+)
15		oxof(CYP2E1) (+)

The nodes also extracted by Nearest Shrunken Centroids are shown in bold.

were performed as described in the method section and were reported in Table 7. The best performance was obtained by training Nearest Shrunken Centroids (NSC) [56] algorithm on the obtained backbone values, by selecting the shrinking parameter by cross-validation within each cross-validation steps. The resulting models led to very good cross-validation specificity (Sp) and sensitivity (Se) for both datasets. Importantly, classifying one study based on the other led to very robust results (GSE7895 predicts GSE19667: Sp=0.87, Se=0.95 and GSE19667 Predicts GSE7895: Sp=0.90, Se=0.94) (Table 7). The best single UBE classifier was based on the genes underlying 8-Methyl-IQX, which was also a leading nodes (Table 6).

While the cross-validation performances were roughly similar, methods based on the backbone values led systematically to higher accuracies on independent datasets (Table 7).

This showed the ability of network signatures to efficiently handle inter-study bias which is known to greatly affect gene-based signature predictions. To illustrate the effect of the transformation to backbone values, principal component analysis (PCA) was carried out on a) the full set of genes, b) the set of genes underlying the network and c) the backbone values of each individual in the study. As can be seen from Additional file 1: Figure S6, the effect of the smoking phenotype was not the dominant source of variation for the two first cases (panels a and b), and the direction of separation of the smoking group averages were strongly disagreeing. In contrast, the phenotype aligned with the first principal component (66% of the inertia) in the last case (panel c). This indicated that the transformation of the gene expression profiles into differential backbone values matched the smoking phenotype with the biology encoded in the xenobiotic metabolism network and potentially reduced the inter-study bias. Finally, Additional file 1: Figure S6b shows that this property was not inherent in the gene set defined by the transcript layer.

The backbone nodes used by Nearest Shrunken Centroids (last line of Table 7) are all leading nodes (Table 6), with a single exception, “Indirubin”. This shows a striking coherence between the important nodes in the network signature and the mechanistic explanation of the TopoNPA score based on leading nodes.

In summary, TopoNPA ability to establish a quantitative marker for cigarette smoke exposure was verified by applying the method to datasets from different studies. It enabled the derivation of a robust network signature for smoking exposure in the lung, and provided a robust mechanistic explanation, which showed the coherence of the TopoNPA framework. Moreover, the method could extract the meaningful biology from a transcriptomics data set and classify study participants accordingly by

**Table 7 Prediction sensitivities and specificities for the two datasets, GSE7895 ( $D_1$ ), GSE19667 ( $D_2$ )**

Type	Method	CV ( $D_1/D_2$ )		$D_1 \rightarrow D_2$		$D_2 \rightarrow D_1$		Mean G-perf Test sets
		Se	Sp	Se	Sp	Se	Sp	
All Genes	tForwardLd	0.95/0.86	0.93/0.92	1.00	0.87	0.69	1.00	<b>0.88</b>
	NSC	0.92/0.94	0.96/0.93	1.00	0.00	0.98	0.00	0.00
	RF	0.75/0.96	1.00/0.97	1.00	0.31	0.98	0.95	<b>0.76</b>
	SVM	0.84/0.94	0.98/0.96	1.00	0.00	1.00	0.00	0.00
Gene in transcript layer	tForwardLd	0.95/0.89	0.92/0.93	0.97	0.91	0.61	0.85	<b>0.83</b>
	LDA	0.92/0.94	0.80/0.97	0.62	0.27	0.86	0.40	0.50
	NSC	0.96/0.92	0.93/0.95	1.00	0.00	1.00	0.00	0.00
	RF	0.87/0.96	1.00/0.97	0.98	0.58	0.94	1.00	<b>0.86</b>
	SVM	0.88/0.95	0.98/0.95	1.00	0.00	0.78	0.15	0.17
UBE downstream genes	CORG + LDA	0.97/0.94	0.90/0.94	0.83	0.36	0.61	0.55	0.56
	CORG + NSC	0.98/0.95	0.93/0.96	0.97	0.00	0.67	0.30	0.22
	Best LDA (8-Methyl-IQX)	0.96/0.95	0.88/0.96	0.9	0.80	0.80	1.00	<b>0.89</b>
	Best NSC (8-Methyl-IQX)	0.96/0.86	0.92/0.98	0.98	0.76	0.86	1.00	<b>0.90</b>
Backbone values	tForwardLd	0.97/0.90	0.95/0.97	0.8	0.82	0.84	0.90	<b>0.86</b>
	LDA	0.96/0.92	0.94/0.98	0.89	0.80	0.84	0.90	<b>0.86</b>
	NSC	0.93/0.93	0.81/0.92	0.95	0.87	0.94	0.90	<b>0.91</b>
	RF	0.93/0.91	0.80/0.91	0.97	0.73	0.88	0.85	<b>0.85</b>
	SVM	0.93/0.93	0.88/0.91	0.98	0.62	0.88	0.90	<b>0.83</b>

The predictions of the samples from the dataset  $D_j$  based on the model trained on the dataset  $D_i$  are reported in the columns  $D_i \rightarrow D_j$ . While not systematically having the best cross-validation performance, the predictors based on the backbone values show more robust behavior when predicting one dataset based on the model trained on the other one. The mean of the G-performances ( $= \sqrt{Sp \cdot Se}$ ) over the two independent test sets are shown in the rightmost column and is highlighted if  $> 0.7$ . The best UBE-based models is chosen based on the mean cross-validation G-performance for the two datasets. The algorithms based on the backbone values leads systematically to good performances. The cross-validation standard errors are reported in Additional file 1: Table S1.

reducing the importance of the sources of variations irrelevant to the biology.

#### TopoNPA identifies abnormal TLR signaling as a plausible explanation for poor response to anti-TNF $\alpha$ drug in the treatment ulcerative colitis

Next we applied TopoNPA to derive a plausible mechanistic explanation of the unequal efficacy of an anti-inflammatory drug in patients suffering from ulcerative colitis and to generate an accurate and robust network signature for predicting individual patient responses to the treatment.

#### Inflammatory bowel disease

Inflammatory bowel disease (IBD) is regarded as a disturbance of immune homeostasis in the mammalian intestine [74]. As evidenced by a number of studies, TNF $\alpha$  plays a major role in IBD pathology, and TNF-blocking agents have proven an effective therapy to both ulcerative colitis (UC) and Crohn's disease (CD) [75]. However, the treatment outcome is highly variable; a monoclonal antibody against TNE, Infliximab (IFX), induces remission in only one third of patients with moderate to severe UC [76]. To avoid unnecessary adverse drug effects and

needlessly high treatment costs, it is imperative to develop reliable biomarkers to predict treatment outcome [77]. Gene signatures have emerged as powerful tools to predict treatment response [78-84]. These include a five-gene signature that could predict IFX response with high accuracy in one cohort, while lacking cross-cohort robustness [79]. The predictive genes were classified as being involved in the adaptive immune response, yet the biological pathways that mediate the resistance to therapy were not identified. To shed more light on the mechanistic reasons behind these IFX responses, we used the canonical TNF-IL1 $\alpha$ -TLR-NF $\kappa$ B network model of NF $\kappa$ B signaling to capture the network response to measured gene expression levels. In addition to TNF signaling, the involvement of both the IL-1 and TLR pathways are well established in IBD pathology [85-88]; in the colonic mucosa, TNE, IL1A, and Toll-like receptor signaling all activate NF $\kappa$ B leading to further expression of inflammatory mediator genes [89]. By applying the TopoNPA approach to publicly available UC transcriptomics datasets, we set out to predict the treatment response in two distinct patient cohorts and investigate the biological pathways involved in the treatment outcome.



### Quantification of network perturbations

We evaluated the transcriptomics profiles of colon samples (GSE 12251 and 14580) from two cohorts of patients prior to receiving their first treatment with IFX for refractory ulcerative colitis [90]. Each patient signature was compared with the average non-responder signature, and the network perturbation of the TNF-IL1 $\alpha$ -TLR-NF $\kappa$ B model was used as the input, to find a mechanistic signature differentiating responders from non-responders. The scores for the perturbation of the TNF-IL1 $\alpha$ -TLR-NF $\kappa$ B network in IFX responders and non-responders (for the contrasts “non-responder” vs. “control”, “responder” vs. “control” and “responder” vs. “non-responder” in the two cohorts together showed the high perturbation of the network for the non-responder group (Figure 4). We also used another dataset containing gene expression profiles of patient colonic biopsies collected pre- and post-treatment (GSE16879). Overall, the non-responder network perturbation was already higher than the responder one. This suggests that the quantitative measure of network perturbation might be indicative of the susceptibility to the treatment.

### Interpretation based on the leading nodes

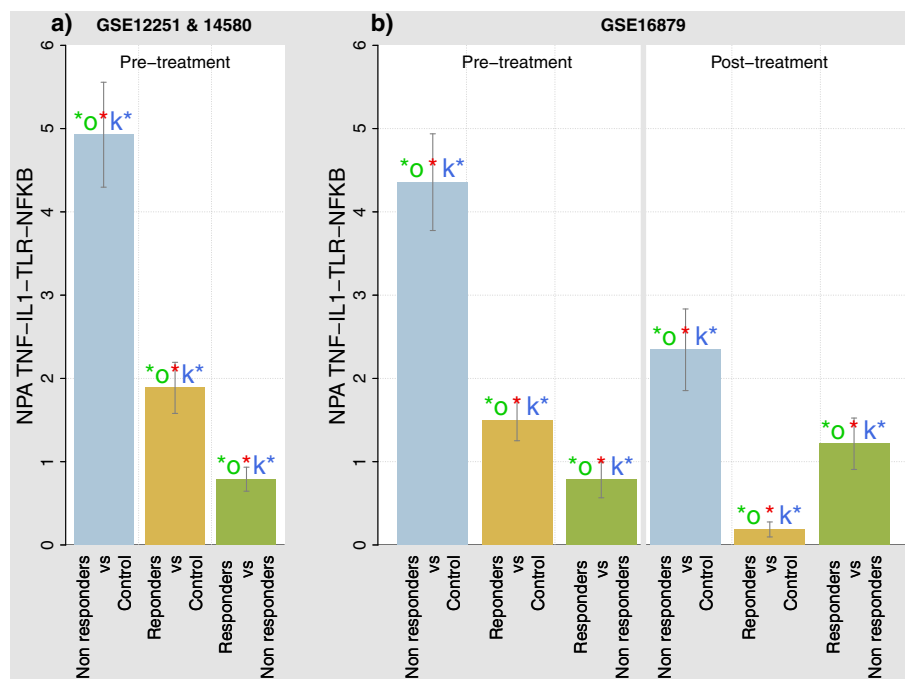
The initial investigation of the leading nodes that defined the difference between responder and non-responder

patients prior to IFX treatment (Figure 5) highlighted the involvement of classical TNFR1- mediated signaling [91]. These nodes were important when comparing all UC patients with healthy controls and responders to non-responders. This is in accordance with previous reports that have demonstrated that TNF $\alpha$  gene expression in colorectal mucosa and high serum TNF levels can be used as a predictor for IFX therapy in ulcerative colitis and Crohn’s disease, respectively [92,93]. Interestingly, MYD88-mediated pathways were also predicted to be important when comparing the pretreatment data from responders and non-responders.

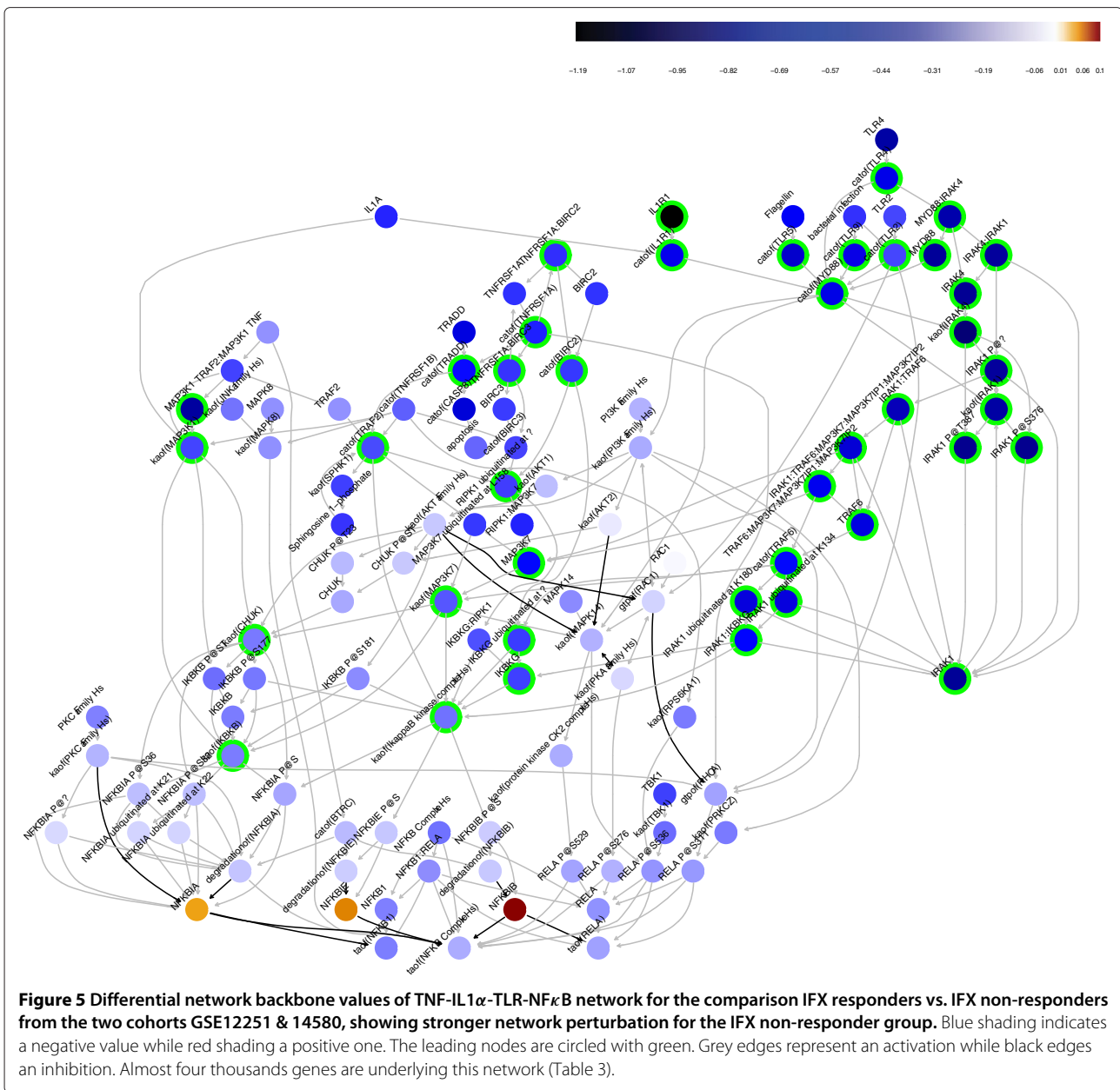
Using the dataset containing pre- and post-treatment effects, we observed that, while MYD88 and TLR (namely TLR2-, TLR4- and TLR5-related nodes) remain important nodes to distinguish the non-responders from the responders even after treatment, IL1R1 signaling was predicted to be similar in both subject groups (Additional file 1: Figure S7). Therefore, the underlying biological mechanisms that define the treatment response in UC patients were possibly related to abnormal TLR signaling and did not involve directly IL1R1.

### Extracting a network-based signature

Standard gene expression-based approaches to predicting the response to IFX from such samples rely on



**Figure 4** NPA of the TNF-IL1 $\alpha$ -TLR-NF $\kappa$ B network in patients with Ulcerative colitis for the comparisons: IFX non-responders vs. control cases, IFX responders vs. control cases and IFX responders vs. IFX non-responders. The right-hand side of panel **b**) shows the TopoNPA scores for the samples collected after IFX treatment (GSE16879), while the other bar plots shows the TopoNPA scores before IFX treatment (GSE 12251 & GSE14580 (panel **a**)), GSE16879 (panel **b**) left-hand side). The significance at the 0.05 level of the “O” and “K” statistics are indicated by “\*o” and “\*k”, respectively, while the significance with respect to the experimental variation is indicated by a red star.



finding gene signatures (i.e., a short list of genes) informing the clinicians of the possible response to the treatment. Arijs *et al.* reported a small gene signature using gene filtering and Nearest Shrunken Centroids that suffers from a lack of robustness when using the gene signature derived from one cohort to predict the response of a second cohort of patients [90] (Table 8). The individual patient backbone values of the TNF-IL1 $\alpha$ -TLR-NF $\kappa$ B model were used as the input for deriving a signature differentiating responders from non-responders.

Comparisons were performed following the scheme described in the method section above were reported in

Table 8. NSC combined with the genes underlying a single UBE and NSC based on the backbone values as the features for learning led to the best prediction performances across cohorts (Table 8). As in the previous example, performance results showed a more robust behavior of network-based features as compared to gene selection, for the majority of the learning algorithms used. Again, this is in line with the results of the IMPROVER Diagnostic Gene Signature challenge [53], where it is argued that features selection or construction are more important than the base learning algorithm chosen. The best predictions based on a single UBE were obtained using the downstream genes of catof (TLR2) (“catalytic activity of TLR2”),

**Table 8 Prediction sensitivities and specificities for the two cohorts, A and B**

Type	Method	CV (A/B)		A → B		B → A		Mean G-perf Test sets
		Se	Sp	Se	Sp	Se	Sp	
All Genes	tForwardLd	0.38/0.63	0.80/0.65	0.50	0.82	1.00	0.88	<b>0.79</b>
	From Arijs, 2009	Accuracy: 0.92/0.91		0.25	1	Accuracy: 0.71		na
	RF	0.20/0.82	0.88/0.73	0.25	0.91	0.62	0.75	0.58
	SVM	0.52/0.78	0.85/0.69	0.42	0.82	0.62	0.75	0.63
	NSC	0.48/0.78	0.80/0.58	0.67	1.00	0.69	0.88	<b>0.80</b>
Gene in transcript layer	tForwardLd	0.50/0.68	0.83/0.62	0.67	1.00	0.88	0.69	<b>0.80</b>
	LDA	0.43/0.90	0.84/0.65	0.42	0.82	0.88	0.62	0.66
	NSC	0.60/0.88	0.79/0.58	0.75	0.73	0.88	0.56	<b>0.72</b>
	RF	0.28/0.85	0.88/0.71	0.33	0.82	0.88	0.69	0.65
	SVM	0.52/0.77	0.86/0.69	0.42	0.82	0.88	0.69	0.68
UBE downstream genes	CORG + LDA	0.33/0.73	0.68/0.62	0.25	0.64	0.75	0.69	0.56
	CORG + NSC	0.62/0.90	0.78/0.60	0.50	0.82	0.88	0.69	<b>0.71</b>
	Best LDA (MAP3K1)	0.45/0.98	0.78/0.69	0.58	0.91	1.00	0.75	<b>0.80</b>
	Best NSC (catof(TLR2))	0.85/0.92	0.80/0.56	0.75	1.00	1.00	0.69	<b>0.85</b>
Backbone values	tForwardLd	0.53/0.82	0.75/0.75	0.50	0.64	1.00	0.62	0.68
	LDA	0.75/0.75	0.76/0.75	0.50	0.73	0.88	0.56	0.65
	NSC	0.98/0.98	0.75/0.67	0.92	0.82	1.00	0.62	<b>0.83</b>
	SVM	0.78/0.78	0.40/0.77	0.91	0.50	0.69	0.88	<b>0.73</b>
	RF	0.75/0.82	0.62/0.78	0.82	0.75	0.75	0.88	<b>0.80</b>

The predictions of the samples from the cohort A (B respectively) based on the model trained on the cohorts B (A respectively) are reported in the columns  $A \rightarrow B$  ( $B \rightarrow A$  respectively). The mean of the G-performances ( $= \sqrt{Sp \cdot Se}$ ) over the two independent test sets are shown in the rightmost column and is highlighted if  $> 0.7$ . The best UBE-based models is chosen based on the mean cross-validation G-performance for the two datasets. The algorithms based on the backbone values leads to good performances for a majority of algorithms. The cross-validation standard errors are reported in Additional file 1: Table S2.

which is one of the leading nodes (Figure 5) and is involved in the TLR-signaling.

As observed in the previous use-case, the inter-study robustness might be explained by the alignment of the responsiveness status with the first principal component (94.7% of the total variance) of the individual backbone values; as opposed to the behavior of the principal components based on the gene expression data (Additional file 1: Figure S8).

## Discussion

We have presented several biological and clinical applications of TopoNPA, a novel quantitative approach that uses knowledge-based cause-and-effect biological network models describing complex processes involving thousands of genes. As an input TopoNPA requires high-throughput transcriptomics data obtained from appropriately designed and executed studies, and a network model relevant to the observed biological response. Our method provides a coherent mechanism-based framework for assessing and quantifying the resulting perturbations of the network as required in a dose-response toxicity setting. It also guides mechanistic interpretation

at node-level resolution in a fully coherent way with the perturbation itself. The relevance of the mechanistic interpretation of the network perturbation has been demonstrated in two controlled *in vitro* studies (CDKi and TNF experiments), and applied to two *in vivo* studies. In addition to the quantification of the perturbation and its interpretation, our framework enables the establishment of coherent, efficient and robust diagnostic classifiers based on individual sample network perturbations. We have shown how to use the established biology of xenobiotic metabolism to stratify a human cohort of smokers and non-smokers. The full potential of this powerful approach for deriving mechanism-based interpretation and diagnosis has been further demonstrated in the context of an *in-vivo* study of ulcerative colitis patients, where a testable hypothesis has been proposed regarding the individual response to the drug Infliximab (see below).

### Network perturbation amplitude methodology

Overall, the TopoNPA approach belongs to the class of backward PT methods (Table 1), and is threshold-free because it does not require any filtering of the gene expression data based on expression value or statistical

significance. In our method, the absence of any fold-change between conditions can be as informative as high fold-changes. It provides a single framework for quantitative and qualitative evaluation of the amplitude of perturbation of a network.

It applies to two-layer cause-and-effect models without any assumption beyond the underlying undirected graph to be strongly connected. In contrast to the approach in [23], the quantification of network perturbations as a positive-definite quantity (quadratic in the  $\beta$ ) allows for causal inconsistency, does not require the choice of a reference node, uses fully the topology of the network and avoids canceling out “destructive interference” in cumulative signed amplitudes (for example when half of the network is positive, and half is negative). Our choice was to consider an “energy” analogue quantity (Figure 1c, top panel) rather than a signed value as used by Martin *et al.* As a particular case, if the functional layer was made of a single node (with a self-loop), then the backbone differential value of that node would equal the NPA score in [23].

TopoNPA enables the quantification of the network response to a treatment, which is a key feature in systems toxicology. Attempts to adapt existing gene set-based methods cannot exploit fully the two-layer network structure as either the quantification or the qualitative assessment of the perturbations computed in the different studies did not match the biological expectations (Table 4).

Our framework offers the possibility to identify key contributors of the perturbation in the network using the leading nodes (Figure 1c, middle panel), which have been shown to be pertinent in the positive control experiment (CDKi experiment). This aspect is not covered in our previous methodology [23] as the network was aggregated in a single UBE structure and subsequently scored. An even deeper investigation is possible by defining a similar notion of leading genes for any (leading) node in the network. However, we believe that the gene expression is the consequence and not the driver for the biological processes of the network, and therefore this was not be systematically looked at. Furthermore, the modern view of network biology implies that the essence of biological processes does not lie in the individual behavior of genes, but rather in their collective action, which is precisely captured by the biological network models [4,41,94].

#### **Network-based Signatures: constructing vs. extracting features**

We have shown in two cases that our approach has led to accurate and, importantly, robust classification of individual samples. Even if our goal was not to develop a purely machine-learning algorithm, it clearly appeared that an appropriate choice of the network model led to remarkable performances in classification tasks that is

over-performing other approaches and the results published by the authors of the original studies. TopoNPA enabled to build network features that leads to more robust classification results, almost independently of the learning methodology used. The key aspect for this behavior is that gene expression profiles are used to construct (as opposed to extract) new features in a surjective way by a *data independent* linear mapping (Figure 1c, bottom panel). As the dimension of the backbone is far lower than the dimension of the underlying gene space, it is expected that our network signatures will be robust. Additionally if the phenotype of interest is associated with the biology encoded in the functional layer of the network, the class separation is expected to align with the main variation of the differential backbone values. This behavior is apparent in the PCAs constructed on the backbone values: the inter-class variability is aligning with the main direction of variation. Additionally, the transformation seems to reduce the inter-study bias. Another benefit of this linear transformation is to move away from the so-called “ $p \gg n$  problem”, where there are far more variables than samples in a dataset and hence lead to more robust diagnoses. Gene-sets or network have also been leveraged in classification problems based on gene-expression data [33-35]. However the enrichment of a given gene-set and its ability to provide discriminant score rely usually on independent algorithms. Also, this aspect is not covered in our previous methodology [23].

This application revealed a promising potential for our approach in the context of personalized medicine: personalized diagnosis based on the classifier to decide the administration of the Infliximab treatment. Also, the smoking network signature derived could serve as an individual marker of smoking exposure in a clinical trial.

#### **Network-based biological explanation and hypothesis generation**

The analysis of UC patient data from responder and non-responder subjects prompted the generation of a network-level hypothesis. Based on our analysis, TNFR1A-signaling seems to be an important node in defining the difference between the responders and non-responders before and after anti-TNF treatment. This suggests that the treatment fails to fully restore normal TNF signaling in the colonic mucosa of non-responders. However, a recent study has shown that TNF-expression returned to normal at week 30 in both IFX responders and non-responders [95]. Therefore, the stimulated TNF signaling is not the only explanation for poor treatment outcome in non-responders. Our results indicate that the underlying biological mechanisms that define the treatment response to TNF blocking agents in UC patients might be related to abnormal MYD88-signaling. MYD88 has been found to be involved in IBD pathology [96,97] and

the involvement of MYD88 in response to TNF-blocking drugs has been demonstrated in studies on rheumatoid arthritis (RA) patients [98]. Our analyses further showed that MYD88 and TLR (namely TLR2-, TLR4- and TLR5-related nodes) remained important nodes to distinguish the non-responders from the responders even after treatment. A recent study by Toedter *et al.* showed that the genes involved in intestinal epithelial barrier defense were differentially expressed in the responder and non-responder colonic mucosa following Infliximab therapy [95]. Members of the TLR family are involved in the injury of the intestinal epithelial barrier, and their abnormal function could lead to defects in mucosal barrier defense in the non-responder population [99,100]. The identification of a high frequency of peripheral T-regulatory cells as a predictive marker for Infliximab treatment response provides additional support for the involvement of abnormal TLR signaling [101-103]. Trip-tolide, an active component isolated from the Chinese herb *Tripterygium wilfordii* with anti-inflammatory and immunosuppressive properties, has been proposed as an alternative compound for the treatment of CD. Interestingly, the favorable effect was shown to be mediated by targeted inhibition of TLR2/TLR4 signaling in the IL10-/- CD mouse model, and in cultured colon tissue samples from CD patients [97]. Finally, Gewirtz *et al.*, discovered that patients from a specific ethnic background with deficient TLR5 were protected from developing CD, advocating the pharmacological inhibition of the TLRs as an alternative to anti-TNF compounds to treat IBD [104]. Such an approach has already been applied for the treatment of RA, where TLR2/TLR4 antagonists have proven beneficial in treating an autoimmune disorder [105].

On-going research in our group is currently using several network models in conjunction first, to develop methods of assessing the biological impact of individual substances, or a set of substances on a biological system, as we have discussed in [41] and second to improve the performance of the backbone-based classifiers.

## Conclusion

The methodology proposed in this study provides a coherent framework going beyond the work of [23] (Table 1, last two rows) to handle the two-layered structure of cause-and-effect networks (Figure 1a). Firstly, it quantifies network perturbations using differential gene expression in conjunction with the explicit network topology and tests a non-perturbation null hypothesis (Figure 2); hence it positions itself as a backward-based PT methodology (Table 1). Secondly, our methodology calculates the perturbation of the network by inferring differential values for each node of the functional layer of the network model, referred to as differential backbone values. Those quantities facilitate the biological interpretation by decomposing

the amplitude of the perturbation and thereby identifying candidate key nodes of the functional layer. Thirdly, it further enables the calculation of these differential backbone values at sample level, which serves to build a knowledge-driven classification of individual patients. Such classifying signatures, which benefit from the mechanistic interpretation of the differential backbone values, can be used to classify individual patient samples. To the best of our knowledge this is the first approach that provides, in a systematic manner, the ability to fully exploit the information provided in two-layer causal models (i.e. using explicitly the full signed network topology), that serves simultaneously for quantitative perturbation assessment, biological interpretation and diagnostic signature extraction. Here we show that using our biological network models to quantify individual patient responses through a network model relevant to the phenotype of interest is a biologically meaningful, interpretable, robust and effective way of deriving network-based signatures.

As a summary, a novel network-based methodology for quantifying perturbation, interpreting data and for deriving network signature was presented. It fully exploits the specific structure of two-layer cause-and-effect network models, made of a functional layer and a transcript layer. The application of our methodology has provided insight into molecular mechanisms by capturing the perturbed network components with high specificity, and has led to robust signatures for diagnosis. The successful application of our quantitative method has clearly demonstrated the potential of TopoNPA in systems biology and systems toxicology.

## Endnote

<sup>a</sup>  $l^2(A) = \{f : A \rightarrow \mathbb{R} \mid \sum_{a \in A} f(a)^2 < \infty\}$  which, for a finite set  $A$ , is isomorphic to  $\mathbb{R}^N$ , where  $N$  is the cardinality of  $A$ .

## Additional files

**Additional file 1: Supplementary information on network models and data.** All supplementary figures and tables are included in this additional file.

**Additional file 2: Two-layer causal network models used in this manuscript, in excel format.**

## Competing interests

The authors declare that they have no competing interests.

## Authors' contributions

FM developed and implemented the methodology. AS and YX contributed to the methodology development. MT did the biological interpretation of the results. JH and MCP supported the project. All the authors contributed to the writing of the manuscript. All authors read and approved the final manuscript.

## Acknowledgments

The authors would like to acknowledge Hector de Leon and Nikolai V. Ivanov for reviewing the manuscript and for their useful comments, Walter Schlage for his priceless biological insights for building the network models and

Selventa collaborators for the fruitful discussions over many years around the network models. The research described in this paper was supported by Philip Morris International.

Received: 4 April 2014 Accepted: 26 June 2014  
Published: 11 July 2014

## References

1. Khatri P, Sirota M, Butte AJ: **Ten years of pathway analysis: current approaches and outstanding challenges.** *PLoS Comput Biol* 2012, **8**(2):1002375.
2. Subramanian A, Tamayo P, Mootha VK, Mukherjee S, Ebert BL, Gillette MA, Paulovich A, Pomeroy SL, Golub TR, Lander ES, Mesirov JP: **Gene set enrichment analysis: a knowledge-based approach for interpreting genome-wide expression profiles.** *Proc Natl Acad Sci USA* 2005, **102**(43):15545–15550.
3. Huang DAW, Sherman BT, Lempicki RA: **Bioinformatics enrichment tools: paths toward the comprehensive functional analysis of large gene lists.** *Nucleic Acids Res* 2009, **37**(1):1–13.
4. Barabasi AL, Oltvai ZN: **Network biology: understanding the cell's functional organization.** *Nat Rev Genet* 2004, **5**(2):101–113.
5. Mewes HW, Frishman D, Guldener U, Mannhaupt G, Mayer K, Mokrejs M, Morgenstern B, Munsterkotter M, Rudd S, Weil B: **MIPS: a database for genomes and protein sequences.** *Nucleic Acids Res* 2002, **30**(1):31–34.
6. Xenarios I, Salwinski L, Duan XJ, Higney P, Kim SM, Eisenberg D: **DIP, the Database of Interacting Proteins: a research tool for studying cellular networks of protein interactions.** *Nucleic Acids Res* 2002, **30**(1):303–305.
7. Chatr-aryamontri A, Ceol A, Palazzi LM, Nardelli G, Schneider MV, Castagnoli L, Cesareni G: **MINT: the Molecular INTERaction database.** *Nucleic Acids Res* 2007, **35**(Database issue):572–574.
8. Draghici S, Khatri P, Tarca AL, Amin K, Done A, Voichita C, Georgescu C, Romero R: **A systems biology approach for pathway level analysis.** *Genome Res* 2007, **17**(10):1537–1545.
9. Greenbaum D, Colangelo C, Williams K, Gerstein M: **Comparing protein abundance and mRNA expression levels on a genomic scale.** *Genome Biol* 2003, **4**:117.
10. Guo Y, Xiao P, Lei S, Deng F, Xiao GG, Liu Y, Chen X, Li L, Wu S, Chen Y, Jiang H, Tan L, Xie J, Zhu X, Liang S, Deng H: **How is mRNA expression predictive for protein expression? A correlation study on human circulating monocytes.** *Acta Biochim Biophys Sin (Shanghai)* 2008, **40**:426–436.
11. Shankavaram UT, Reinhold WC, Nishizuka S, Major S, Morita D, Chary KK, Reimers MA, Scherf U, Kahn A, Dolginov D, Cossman J, Kaldjian EP, Scudiero DA, Petricoin E, Liotta L, Lee JK, Weinstein JN: **Transcript and protein expression profiles of the NCI-60 cancer cell panel: an integrative microarray study.** *Mol Cancer Ther* 2007, **6**(3):820–832.
12. Guo Y, Xiao P, Lei S, Deng F, Xiao GG, Liu Y, Chen X, Li L, Wu S, Chen Y, Jiang H, Tan L, Xie J, Zhu X, Liang S, Deng H: **How is mRNA expression predictive for protein expression? A correlation study on human circulating monocytes.** *Acta Biochim Biophys Sin (Shanghai)* 2008, **40**(5):426–436.
13. Schwanhauser B, Busse D, Li N, Dittmar G, Schuchhardt J, Wolf J, Chen W, Selbach M: **Global quantification of mammalian gene expression control.** *Nature* 2011, **473**(7347):337–342.
14. Mitrea C, Taghavi Z, Bokanizad B, Hanoudi S, Tagett R, Donato M, Voichita C, Draghici S: **Methods and approaches in the topology-based analysis of biological pathways.** *Front Physiol* 2013, **4**:278.
15. Castillo-Davis CI, Hartl DL: **Genemerge-post-genomic analysis, data mining, and hypothesis testing.** *Bioinformatics* 2003, **19**(7):891–892.
16. Tomfroh J, Lu J, Kepler TB: **Pathway level analysis of gene expression using singular value decomposition.** *BMC Bioinformatics* 2005, **6**:225.
17. Shojai A, Michailidis G: **Analysis of gene sets based on the underlying regulatory network.** *J Comput Biol* 2009, **16**(3):407–426.
18. Komurov K, Dursun S, Erdin S, Ram PT: **NetWalker: a contextual network analysis tool for functional genomics.** *BMC Genomics* 2012, **13**:282.
19. Liao JC, Boscolo R, Yang Y-L, Tran LM, Sabatti C, Roychowdhury VP: **Network component analysis: reconstruction of regulatory signals in biological systems.** *Proc Natl Acad Sci* 2003, **100**(26):15522–15527.
20. Lefebvre C, Rajbhandari P, Alvarez M, Bandaru P, Lim W, Sato M, Wang K, Sumazin P, Kustagi M, Bisikirska B, Basso K, Beltrao P, Krogan N, Gautier J, Dalla-Favera R, Califano A: **A human b-cell interactome identifies myb and foxm1 as master regulators of proliferation in germinal centers.** *Mol Syst Biol* 2010, **6**:377.
21. Catlett NL, Bargnesi AJ, Ungerer S, Seagaran T, Ladd W, Elliston KO, Pratt D: **Reverse causal reasoning: applying qualitative causal knowledge to the interpretation of high-throughput data.** *BMC Bioinformatics* 2013, **14**(1):340.
22. Ackermann M, Strimmer K: **A general modular framework for gene set enrichment analysis.** *BMC Bioinformatics* 2009, **10**:47.
23. Martin F, Thomson TM, Sewer A, Drubin DA, Mathis C, Weisensee D, Pratt D, Hoeng J, Peitsch MC: **Assessment of network perturbation amplitudes by applying high-throughput data to causal biological networks.** *BMC Syst Biol* 2012, **6**:54.
24. Schlage WK, Westra JW, Gebel S, Catlett NL, Mathis C, Frushour BP, Hengstermann A, Van Hooser A, Poussin C, Wong B, Lietz M, Park J, Drubin D, Veljkovic E, Peitsch MC, Hoeng J, Deehan R: **A computable cellular stress network model for non-diseased pulmonary and cardiovascular tissue.** *BMC Syst Biol* 2011, **5**:168.
25. Westra JW, Schlage WK, Frushour BP, Gebel S, Catlett NL, Han W, Eddy SF, Hengstermann A, Matthews AL, Mathis C, Lichtner RB, Poussin C, Talikka M, Veljkovic E, Van Hooser AA, Wong B, Maria MJ, Peitsch MC, Deehan R, Hoeng J: **Construction of a computable cell proliferation network focused on non-diseased lung cells.** *BMC Syst Biol* 2011, **5**:105.
26. Gebel S, Lichtner RB, Frushour B, Schlage WK, Hoang V, Talikka M, Hengstermann A, Mathis C, Veljkovic E, Peck M, Peitsch MC, Deehan R, Hoeng J, Westra JW: **Construction of a computable network model for dna damage, autophagy, cell death, and senescence.** *Bioinform Biol Insights* 2013, **7**:97–117.
27. Westra J, Schlage W, Hengstermann A, Gebel S, Mathis C, Thomson T, Wong B, Hoang V, Veljkovic E, Peck M, Lichtner R, Weisensee D, Talikka M, Deehan R, Hoeng J, Peitsch M: **A modular cell-type focused inflammatory process network model for non-diseased pulmonary tissue.** *Bioinform Biol Insights* 2013, **7**:167–192.
28. Ansari S, Binder J, Boue S, Di Fabio A, Hayes W, Hoeng J, Iskandar A, Kleiman R, Norel R, O'Neil B, Peitsch MC, Poussin C, Pratt D, Rhrissorrakrai K, Schlage WK, Stolovitzky G, Talikka M: **The sbv IMPROVER project team: On crowd-verification of biological networks.** *Bioinform Biol Insight* 2013, **7**:307–325. <http://www.la-press.com/on-crowd-verification-of-biological-networks-article-a3910>.
29. Selventa: **OpenBEL.** 2013. <http://www.openbel.org/>.
30. Perou CM, Sørlie T, Eisen MB, van de Rijn M, Jeffrey SS, Rees CA, Pollack JR, Ross DT, Johnsen H, Akslen LA, Fluge O, Pergamenschikov A, Williams C, Zhu SX, Lønning PE, Børresen-Dale AL, Brown PO, Botstein D: **Molecular portraits of human breast tumours.** *Nature* 2000, **406**:747–752.
31. Yan X, Ma L, Yi D, Yoon JG, Diercks A, Foltz G, Price ND, Hood LE, Tian Q: **A CD133-related gene expression signature identifies an aggressive glioblastoma subtype with excessive mutations.** *Proc Natl Acad Sci USA* 2011, **108**:1591–1596.
32. Froehlich H: **Network-based consensus gene signatures for biomarker discovery in breast cancer.** *PLoS ONE* 2011, **6**(10):25364.
33. Lee E, Chuang HY, Kim JW, Ideker T, Lee D: **Inferring pathway activity toward precise disease classification.** *PLoS Comput Biol* 2008, **4**:1000217.
34. Chuang HY, Lee E, Liu YT, Lee D, Ideker T: **Network-based classification of breast cancer metastasis.** *Mol Syst Biol* 2007, **3**:140.
35. Rapaport F, Zinovjev A, Dutreix M, Barillot E, Vert JP: **Classification of microarray data using gene networks.** *BMC Bioinformatics* 2007, **8**:35.
36. Su J, Yoon BJ, Dougherty ER: **Identification of diagnostic subnetwork markers for cancer in human protein-protein interaction network.** *BMC Bioinformatics* 2010, **11**(Suppl 6):8.
37. Cun Y, Frohlich H: **Network and data integration for biomarker signature discovery via network smoothed T-statistics.** *PLoS ONE* 2013, **8**(9):73074.
38. Chen L, Xuan J, Riggins RB, Clarke R, Wang Y: **Identifying cancer biomarkers by network-constrained support vector machines.** *BMC Syst Biol* 2011, **5**:161.

39. Andersen ME, Krewski D: **Toxicity testing in the 21st century: bringing the vision to life.** *Toxicol Sci* 2009, **107**(2):324–330.
40. Nam D, Kim SY: **Gene-set approach for expression pattern analysis.** *Brief Bioinformatics* 2008, **9**(3):189–197.
41. Hoeng J, Deehan R, Pratt D, Martin F, Sewer A, Thomson TM, Drubin DA, Waters CA, de Graaf D, Peitsch MC: **A network-based approach to quantifying the impact of biologically active substances.** *Drug Discov Today* 2012, **17**(9–10):413–418.
42. Smyth GK: **Linear models and empirical bayes methods for assessing differential expression in microarray experiments.** *Stat Appl Genet Mol Biol* 2004, **3**:3.
43. Kramer A, Green J, Pollard J, Tugendreich S: **Causal analysis approaches in Ingenuity Pathway Analysis.** *Bioinformatics* 2014, **30**(4):523–530.
44. Chindelevitch L, Ziemek D, Enayetallah A, Randhawa R, Sidders B, Brockel C, Huang ES: **Causal reasoning on biological networks: interpreting transcriptional changes.** *Bioinformatics* 2012, **28**(8):1114–1121.
45. Markowetz F, Kostka D, Troyanskaya OG, Spang R: **Nested effects models for high-dimensional phenotyping screens.** *Bioinformatics* 2007, **23**(13):305–312.
46. Tarca AL, Draghici S, Khatri P, Hassan SS, Mittal P, Kim JS, Kim CJ, Kusanovic JP, Romero R: **A novel signaling pathway impact analysis.** *Bioinformatics* 2009, **25**(1):75–82.
47. Belkin M, Partha N: **Semi-supervised learning on riemannian manifolds.** *Mach Learn* 2004, **56**:209–239.
48. Chung FRK: *Spectral Graph Theory*. Vol. 92. American Mathematical Soc; 1997. [http://books.google.ch/books?id=YUc38\\_MCuhAC](http://books.google.ch/books?id=YUc38_MCuhAC).
49. Goncalves JP, Francisco AP, Moreau Y, Madeira SC: **Interactogeneous: disease gene prioritization using heterogeneous networks and full topology scores.** *PLoS ONE* 2012, **7**(11):49634.
50. Jacob L, Neuvial P, Dudoit S: **More power via graph-structured tests for differential expression of gene networks.** *Ann Appl Stat* 2012, **6**(2):561–600.
51. Hou YP, Li J, Pan Y, Dewey C: **On the Laplacian eigenvalues of signed graphs.** *Linear Multilinear Algebra* 2003, **51**(1):21–30.
52. Efron B, Tibshirani R: **On testing the significance of sets of genes.** *Ann Appl Stat* 2007, **1**(1):107–129.
53. Tarca AL, Lauria M, Unger M, Bilal E, Boue S, Kumar Dey K, Hoeng J, Koeppl H, Martin F, Meyer P, Nandy P, Norel R, Peitsch M, Rice JJ, Romero R, Stolovitzky G, Taliikka M, Xiang Y, Zechner C: **Strengths and limitations of microarray-based phenotype prediction: lessons learned from the IMPROVER Diagnostic Signature Challenge.** *Bioinformatics* 2013, **29**(22):2892–2899.
54. Tarca AL, Than NG, Romero R: **Methodological approach from the best overall team in the improver diagnostic signature challenge.** *Syst Biomed* 2013, **1**(4):24–34.
55. Breiman L: **Random forests.** *Mach Learn* 2001, **45**(1):5–32.
56. Tibshirani R, Hastie T, Narasimhan B, Chu G: **Diagnosis of multiple cancer types by shrunken centroids of gene expression.** *Proc Natl Acad Sci USA* 2002, **99**:6567–6572.
57. Baldwin AS: **The NF-kappa B and I kappa B proteins: new discoveries and insights.** *Annu Rev Immunol* 1996, **14**:649–683.
58. Gebel S, Gerstmayer B, Kuhl P, Borlak J, Meurrens K, Muller T: **The kinetics of transcriptomic changes induced by cigarette smoke in rat lungs reveals a specific program of defense, inflammation, and circadian clock gene expression.** *Toxicol Sci* 2006, **93**(2):422–431.
59. Kogel U, Schlage WK, Martin F, Xiang Y, Ansari S, Leroy P, Vanscheeuwijck P, Gebel S, Buettner A, Wyss C, Esposito M, Hoeng J, Peitsch MC: **A 28-day rat inhalation study with an integrated molecular toxicology endpoint demonstrates reduced exposure effects for a prototypic modified risk tobacco product compared with conventional cigarettes.** *Food Chem Toxicol* 2014, **68C**:204–217.
60. Shan B, Farmer AA, Lee WH: **The molecular basis of E2F-1/DP-1-induced S-phase entry and apoptosis.** *Cell Growth Differ* 1996, **7**(6):689–697.
61. Reed SI, Bailly E, Dulic V, Hengst L, Resnitzky D, Slingerland J: **G1 control in mammalian cells.** *J Cell Sci Suppl* 1994, **18**:69–73.
62. Sherr CJ, Roberts JM: **Inhibitors of mammalian G1 cyclin-dependent kinases.** *Genes Dev* 1995, **9**(10):1149–1163.
63. Bagchi S, Weinmann R, Raychaudhuri P: **The retinoblastoma protein copurifies with E2F-1, an E1A-regulated inhibitor of the transcription factor E2F.** *Cell* 1991, **65**(6):1063–1072.
64. Lin BT, Gruenwald S, Morla AO, Lee WH, Wang JY: **Retinoblastoma cancer suppressor gene product is a substrate of the cell cycle regulator cdc2 kinase.** *EMBO J* 1991, **10**(4):857–864.
65. Hollingsworth RE, Chen PL, Lee WH: **Integration of cell cycle control with transcriptional regulation by the retinoblastoma protein.** *Curr Opin Cell Biol* 1993, **5**(2):194–200.
66. Beane J, Sebastiani P, Liu G, Brody JS, Lenburg ME, Spira A: **Reversible and permanent effects of tobacco smoke exposure on airway epithelial gene expression.** *Genome Biol* 2007, **8**(9):201.
67. Strulovici-Barel Y, Omberg L, O'Mahony M, Gordon C, Hollmann C, Tilley AE, Salit J, Mezey J, Harvey BG, Crystal RG: **Threshold of biologic responses of the small airway epithelium to low levels of tobacco smoke.** *Am J Respir Crit Care Med* 2010, **182**(12):1524–1532.
68. Harvey BG, Heguy A, Leopold PL, Carolan BJ, Ferris B, Crystal RG: **Modification of gene expression of the small airway epithelium in response to cigarette smoking.** *J Mol Med* 2007, **85**(1):39–53.
69. Chari R, Lonergan KM, Ng RT, MacAulay C, Lam WL, Lam S: **Effect of active smoking on the human bronchial epithelium transcriptome.** *BMC Genomics* 2007, **8**:297.
70. Zevin S, Benowitz NL: **Drug interactions with tobacco smoking. An update.** *Clin Pharmacokinet* 1999, **36**(6):425–438.
71. Aoshiba K, Nagai A: **Oxidative stress, cell death, and other damage to alveolar epithelial cells induced by cigarette smoke.** *Tob Induc Dis* 2003, **1**(3):219–226.
72. Gebremichael A, Tullis K, Denison MS, Cheek JM, Pinkerton KE: **Ah-receptor-dependent modulation of gene expression by aged and diluted sidestream cigarette smoke.** *Toxicol Appl Pharmacol* 1996, **141**(1):76–83.
73. Villard PH, Seree EM, Re JL, De Meo M, Barra Y, Attolini L, Dumenil G, Catalin J, Durand A, Lacarelle B: **Effects of tobacco smoke on the gene expression of the Cyp1a, Cyp2b, Cyp2e, and Cyp3a subfamilies in mouse liver and lung: relation to single strand breaks of DNA.** *Toxicol Appl Pharmacol* 1998, **148**(2):195–204.
74. Rakoff-Nahoum S, Bousvaros A: **Innate and adaptive immune connections in inflammatory bowel diseases.** *Curr Opin Gastroenterol* 2010, **26**(6):572–577.
75. Steinhart H: **Clinical perspectives—biologics in IBD: What's all the fuss?** *Can J Gastroenterol* 2001, **15**(12):799–804.
76. Rutgeerts P, Sandborn WJ, Feagan BG, Reinisch W, Olson A, Johanns J, Travers S, Rachmilewitz D, Hanauer SB, Lichtenstein GR, de Villiers WJ, Present D, Sands BE, Colombel JF: **Infliximab for induction and maintenance therapy for ulcerative colitis.** *N Engl J Med* 2005, **353**(23):2462–2476.
77. Di Sabatino A, Liberato L, Marchetti M, Biancheri P, Corazza GR: **Optimal use and cost-effectiveness of biologic therapies in inflammatory bowel disease.** *Intern Emerg Med* 2011, **6** Suppl 1:17–27.
78. Taylor KD, Plevy SE, Yang H, Landers CJ, Barry MJ, Rotter JJ, Targan SR: **ANCA pattern and LTA haplotype relationship to clinical responses to anti-TNF antibody treatment in Crohn's disease.** *Gastroenterology* 2001, **120**(6):1347–1355.
79. Arijis I, Li K, Toedter G, Quintens R, Van Lommel L, Van Steen K, Leemans P, De Hertogh G, Lemaire K, Ferrante M, Schnitzler F, Thorrez L, Ma K, Song XY, Marano C, Van Assche G, Vermeire S, Geboes K, Schuit F, Baribaud F, Rutgeerts P: **Mucosal gene signatures to predict response to infliximab in patients with ulcerative colitis.** *Gut* 2009, **58**(12):1612–1619.
80. Arijis I, Quintens R, Van Lommel L, Van Steen K, De Hertogh G, Lemaire K, Schraenen A, Perrier C, Van Assche G, Vermeire S, Geboes K, Schuit F, Rutgeerts P: **Predictive value of epithelial gene expression profiles for response to infliximab in Crohn's disease.** *Inflamm Bowel Dis* 2010, **16**(12):2090–2098.
81. Ferrante M, Vermeire S, Katsanos KH, Noman M, Van Assche G, Schnitzler F, Arijis I, De Hertogh G, Hoffman I, Geboes JK, Rutgeerts P: **Predictors of early response to infliximab in patients with ulcerative colitis.** *Inflamm Bowel Dis* 2007, **13**(2):123–128.
82. Martinez-Borra J, Lopez-Larrea C, Gonzalez S, Fuentes D, Dieguez A, Deschamps EM, Perez-Pariente JM, Lopez-Vazquez A, de Francisco R, Rodrigo L: **High serum tumor necrosis factor-alpha levels are**



- associated with lack of response to infliximab in fistulizing Crohn's disease. *Am J Gastroenterol* 2002, **97**(9):2350–2356.
83. Rismo R, Olsen T, Cui G, Christiansen I, Florholmen J, Goll R: **Mucosal cytokine gene expression profiles as biomarkers of response to infliximab in ulcerative colitis.** *Scand J Gastroenterol* 2012, **47**(5):538–547.
84. Watson AJ, Tremelling M: **Mucosal gene expression signatures that predict response of ulcerative colitis to infliximab.** *Gastroenterology* 2011, **140**:729–731.
85. Carvalho FA, Nalbantoglu I, Ortega-Fernandez S, Aitken JD, Su Y, Koren O, Walters WA, Knight R, Ley RE, Vijay-Kumar M, Gewirtz AT: **Interleukin-1 $\beta$  (IL-1 $\beta$ ) promotes susceptibility of Toll-like receptor 5 (TLR5) deficient mice to colitis.** *Gut* 2012, **61**(3):373–384.
86. Dinarello CA, Thompson RC: **Blocking IL-1: interleukin 1 receptor antagonist in vivo and in vitro.** *Immunol Today* 1991, **12**(11):404–410.
87. Rakoff-Nahoum S, Hao L, Medzhitov R: **Role of toll-like receptors in spontaneous commensal-dependent colitis.** *Immunity* 2006, **25**(2):319–329.
88. Cario E: **Toll-like receptors in inflammatory bowel diseases: a decade later.** *Inflamm Bowel Dis* 2010, **16**(9):1583–1597.
89. Sandborn WJ, Faubion WA: **Clinical pharmacology of inflammatory bowel disease therapies.** *Curr Gastroenterol Rep* 2000, **2**(6):440–445.
90. Arijis I, De Hertogh G, Lemaire K, Quintens R, Van Lommel L, Van Steen K, Leemans P, Cleynen I, Van Assche G, Vermeire S, Geboes K, Schuit F, Rutgeerts P: **Mucosal gene expression of antimicrobial peptides in inflammatory bowel disease before and after first infliximab treatment.** *PLoS ONE* 2009, **4**(11):7984.
91. Wajant H, Scheurich P: **TNFR1-induced activation of the classical NF- $\kappa$ B pathway.** *FEBS J* 2011, **278**(6):862–876.
92. Olsen T, Cui G, Goll R, Husebekk A, Florholmen J: **Infliximab therapy decreases the levels of TNF-alpha and IFN-gamma mRNA in colonic mucosa of ulcerative colitis.** *Scand J Gastroenterol* 2009, **44**(6):727–735.
93. Schmidt C, Giese T, Hermann E, Zeuzem S, Meuer SC, Stallmach A: **Predictive value of mucosal TNF-alpha transcripts in steroid-refractory Crohn's disease patients receiving intensive immunosuppressive therapy.** *Inflamm Bowel Dis* 2007, **13**(1):65–70.
94. Bai JP, Abernethy DR: **Systems pharmacology to predict drug toxicity: integration across levels of biological organization.** *Annu Rev Pharmacol Toxicol* 2013, **53**:451–473.
95. Toedter G, Li K, Sague S, Ma K, Marano C, Macoritto M, Park J, Deehan R, Matthews A, Wu GD, Lewis JD, Arijis I, Rutgeerts P, Baribaud F: **Genes associated with intestinal permeability in ulcerative colitis: changes in expression following infliximab therapy.** *Inflamm Bowel Dis* 2012, **18**(8):1399–1410.
96. Araki A, Kanai T, Ishikura T, Makita S, Uraushihara K, Iiyama R, Totsuka T, Takeda K, Akira S, Watanabe M: **MyD88-deficient mice develop severe intestinal inflammation in dextran sodium sulfate colitis.** *J Gastroenterol* 2005, **40**(1):16–23.
97. Yu C, Shan T, Feng A, Li Y, Zhu W, Xie Y, Li N, Li J: **Triptolide ameliorates Crohn's colitis is associated with inhibition of TLRs / NF-kappaB signaling pathway.** *Fitoterapia* 2011, **82**(4):709–715.
98. Potter C, Cordell HJ, Barton A, Daly AK, Hyrich KL, Mann DA, Morgan AW, Wilson AG, Isaacs JD: **Association between anti-tumour necrosis factor treatment response and genetic variants within the TLR and NFkappaB signalling pathways.** *Ann Rheum Dis* 2010, **69**(7):1315–1320.
99. Ey B, Eyking A, Gerken G, Podolsky DK, Cario E: **TLR2 mediates gap junctional intercellular communication through connexin-43 in intestinal epithelial barrier injury.** *J Biol Chem* 2009, **284**(33):22332–22343.
100. Cario E, Gerken G, Podolsky DK: **Toll-like receptor 2 controls mucosal inflammation by regulating epithelial barrier function.** *Gastroenterology* 2007, **132**(4):1359–1374.
101. Di Sabatino A, Biancheri P, Piconese S, Rosado MM, Ardizzone S, Rovedatti L, Ubezio C, Massari A, Sampietro GM, Foschi D, Porro GB, Colombo MP, Carsetti R, MacDonald TT, Corazza GR: **Peripheral regulatory T cells and serum transforming growth factor- $\beta$ : relationship with clinical response to infliximab in Crohn's disease.** *Inflamm Bowel Dis* 2010, **16**(11):1891–1897.
102. Himmel ME, Hardenberg G, Piccirillo CA, Steiner TS, Levings MK: **The role of T-regulatory cells and Toll-like receptors in the pathogenesis of human inflammatory bowel disease.** *Immunology* 2008, **125**(2):145–153.
103. Suttmuller R, Garritsen A, Adema GJ: **Regulatory T cells and toll-like receptors: regulating the regulators.** *Ann Rheum Dis* 2007, **66** Suppl 3:91–95.
104. Gewirtz AT, Vijay-Kumar M, Brant SR, Duerr RH, Nicolae DL, Cho JH: **Dominant-negative TLR5 polymorphism reduces adaptive immune response to flagellin and negatively associates with Crohn's disease.** *Am J Physiol Gastrointest Liver Physiol* 2006, **290**(6):1157–1163.
105. Vanags D, Williams B, Johnson B, Hall S, Nash P, Taylor A, Weiss J, Feeney D: **Therapeutic efficacy and safety of chaperonin 10 in patients with rheumatoid arthritis: a double-blind randomised trial.** *Lancet* 2006, **368**(9538):855–863.

doi:10.1186/1471-2105-15-238

Cite this article as: Martin et al.: Quantification of biological network perturbations for mechanistic insight and diagnostics using two-layer causal models. *BMC Bioinformatics* 2014 **15**:238.

Submit your next manuscript to BioMed Central and take full advantage of:

- Convenient online submission
- Thorough peer review
- No space constraints or color figure charges
- Immediate publication on acceptance
- Inclusion in PubMed, CAS, Scopus and Google Scholar
- Research which is freely available for redistribution

Submit your manuscript at  
www.biomedcentral.com/submit

