

CORRESPONDENCE

Open Access

The effects of containment measures in the Italian outbreak of COVID-19



M. Supino^{1*} , A. d'Onofrio^{2,3}, F. Luongo⁴, G. Occhipinti^{1,5} and A. Dal Co⁶

Abstract

The COVID-19 pandemic is spreading worldwide. Italy emerged early on as the country with the largest outbreak outside Asia. The outbreak in Northern Italy demonstrates that it is fundamental to contain the virus' spread at a very early stage of diffusion. At later stages, no containment measure, even if strict, can prevent the saturation of the hospitals and of the intensive care units in any country. Here we show that it is possible to predict when the intensive care units will saturate, within a few days from the beginning of the exponential growth of COVID-19 intensive care patients. Using early counts of intensive care patients, we predict the saturation for Lombardy, Italy. We also assess short-term and long-term lockdown effects on intensive care units and number of deaths. Governments should use the Italian outbreak as a precedent and implement appropriate containment measures to prevent the saturation of their intensive care units and protect their population, also, and above all, in anticipation of a possible second exponential spread of infections.

Background

The Coronavirus Disease 2019 (COVID-19) is a respiratory infectious disease caused by the virus SARS-CoV-2 (also known as 2019-nCoV), which originated in Wuhan, China, probably in early December 2019. On January 23rd, Wuhan city shut down public transportation and airways; 1 week later, Wuhan and other cities in the province of Hubei, imposed strict social distancing measures (closure of school and non-essential work activities), combined with active search and isolation of infective cases and their contacts; on February 13th, all non-essential companies and manufacturing plants were closed. On February 15th, France reported the first death from COVID-19 outside Asia, while dozens of countries document cases of infection. On February 24th, 3 weeks after the lockdown of Wuhan and other cities, cases in China have fallen from an average of 2500 daily to 400 cases. In the meanwhile, Italy emerged as the country with the largest outbreak outside Asia. On March 9th,

Italy imposed a lockdown of the whole nation. On March 11th, the World Health Organization (WHO) declared the pandemic state, when the world counted more than 118,000 cases in 114 countries. On March 19th, while China announced that the incidence was brought to negligible levels and attempts to prudently restart normal life were initiated, the total number of deaths outside China overtook the deaths counted in China. On March 19th, Italy counted 3405 deaths, surpassing China. In Europe, several countries experienced similar exponential growth of cases as Italy, with just a few days of delay (Fig. 1). Spain and France imposed a lockdown on March 14th and on March 17th, respectively. On March 21st, Italy imposed a full lockdown of the nation, closing all non-essential companies and manufacturing plants. Over the following 2 weeks, almost all European countries imposed similar containment measures, and more than half of the world's population was under lockdown, which impacted tremendously societies and economies [1, 2].

China was able to control the outbreak of COVID-19 in about 2 months by implementing strong containment measures, such as lockdown of the population [3].

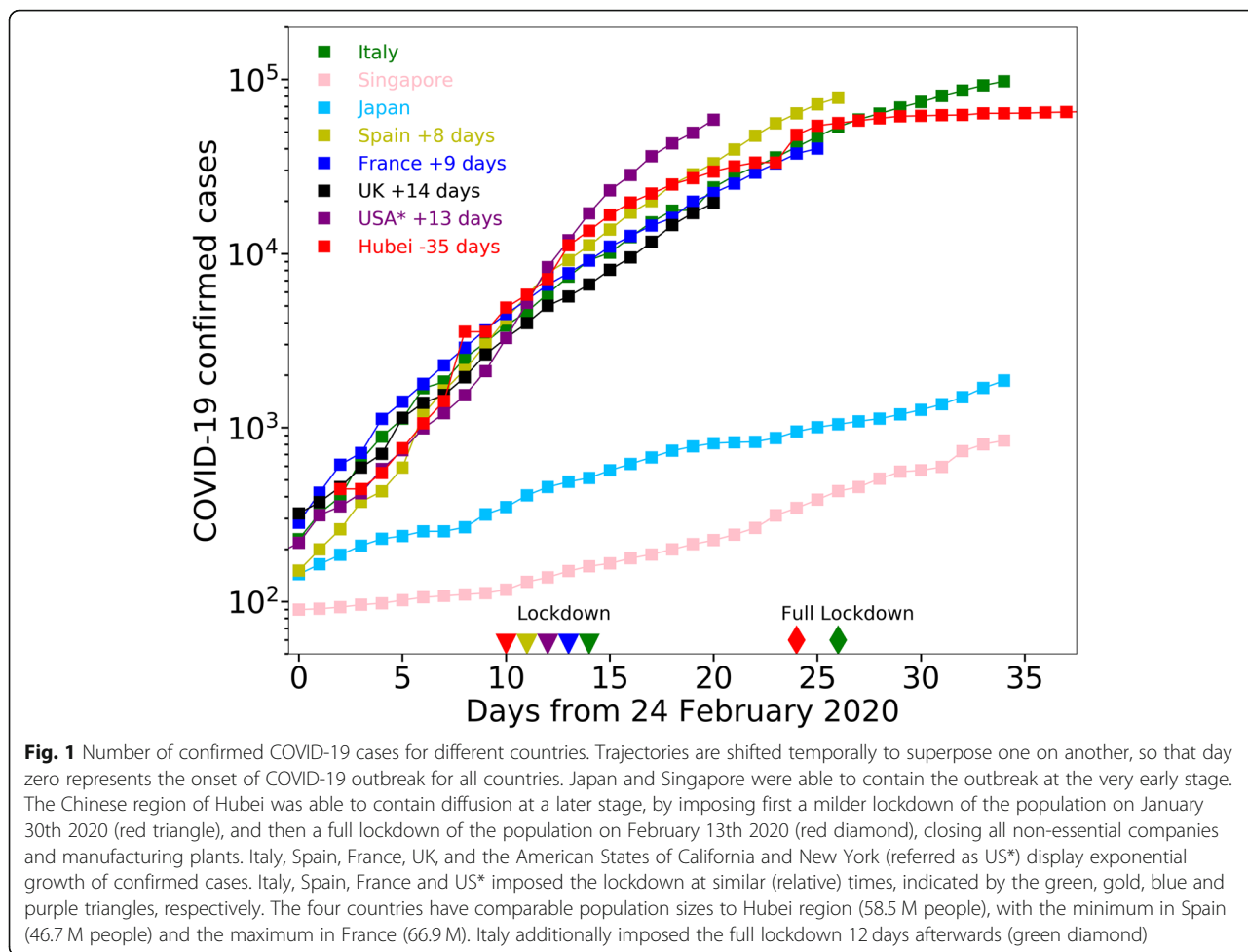
* Correspondence: supino@ipgp.fr

¹Université de Paris, Institut de physique du globe de Paris, CNRS, F-75005 Paris, France

Full list of author information is available at the end of the article



© The Author(s). 2020 **Open Access** This article is licensed under a Creative Commons Attribution 4.0 International License, which permits use, sharing, adaptation, distribution and reproduction in any medium or format, as long as you give appropriate credit to the original author(s) and the source, provide a link to the Creative Commons licence, and indicate if changes were made. The images or other third party material in this article are included in the article's Creative Commons licence, unless indicated otherwise in a credit line to the material. If material is not included in the article's Creative Commons licence and your intended use is not permitted by statutory regulation or exceeds the permitted use, you will need to obtain permission directly from the copyright holder. To view a copy of this licence, visit <http://creativecommons.org/licenses/by/4.0/>. The Creative Commons Public Domain Dedication waiver (<http://creativecommons.org/publicdomain/zero/1.0/>) applies to the data made available in this article, unless otherwise stated in a credit line to the data.



Lockdown can appear as an extreme measure, but it is not. Mild restrictions, such closure of schools, partial closure of workplaces or curfews, can lower the effective basic reproduction number of infection (R_t) but very likely not below the unit. With mild restrictions, the number of infections would grow at the same rate for a period equal to the incubation time (which is below 14 days for 99% of COVID-19 infections [4]), and would then grow exponentially at a lower rate. Therefore, mild restrictions would slow down the epidemic, but not control it [5].

In this work, we discuss the necessity and efficacy of lockdown measures for controlling the outbreak of COVID-19, analyzing data from Italy, the country with the first recorded outbreak of the disease during the first spread of COVID-19 in Europe. We also assess the time it takes to reduce the number of patients hospitalized with severe COVID-19 symptoms after the beginning of the lockdown. Currently (October 28th, 2020), COVID-19 cases are surging worldwide, following the relaxation of containment measures during the last months. The impact of lockdown in the first Italian outbreak represents a fundamental precedent that can help policymakers to

define the decision timeline for containment measures in the next weeks or months.

COVID-19 represent a severe challenge for national health systems

SARS-CoV-2 poses a major challenge for the National Health Systems (NHS): the exponential increase of patients needing hospitalization in intensive care units (ICU). In Italy, the 2018–2019 seasonal influenza required 812 intensive care beds [6], while COVID-19 infection required more than 1000 ICU beds after only 21 days from the first detected cases on February 24th 2020 (Fig. 2).

While NHS are prepared to receive ICU patients distributed during the influenza season, which lasts several months, no NHS can manage the exponential growing of the number of COVID-19 patients. To avoid the saturation of the ICUs, governments need to impose strong containment measures, such as lockdown of the population early. Acting early is paramount: after the containments measures are taken, the number of cases still grows exponentially for at least ten days, due to infections contracted before the measures [4]. The later these

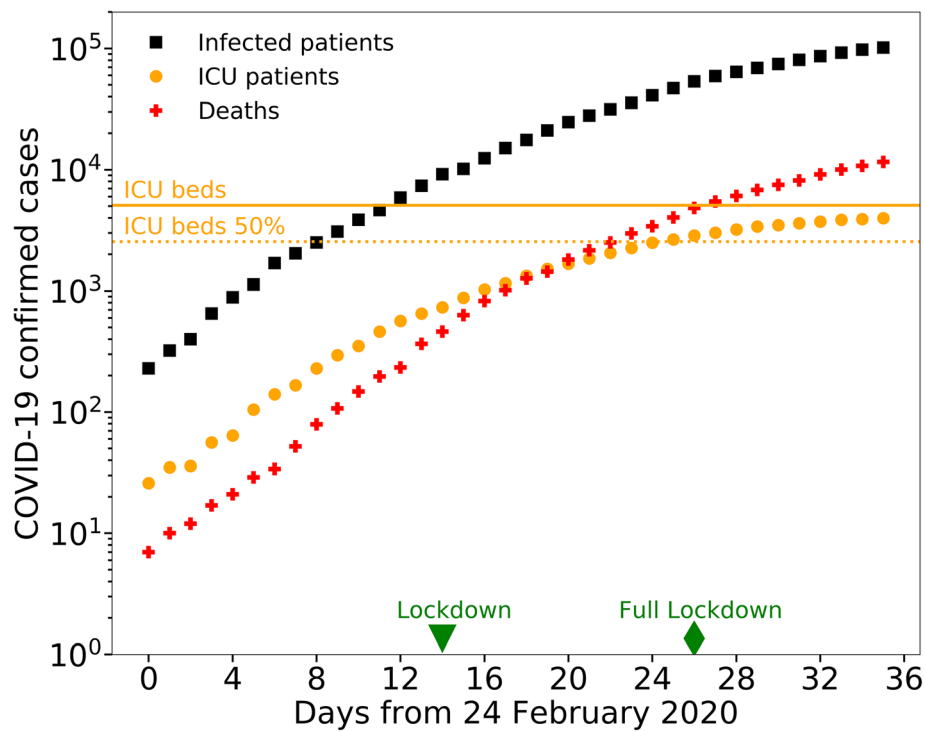


Fig. 2 Time evolution of COVID-19 epidemic in Italy. The number of infected patients (black squares) and deaths (red crosses) increased exponentially in time (note that the vertical axis has exponential units). The number of intensive care patients (orange circles) grew exponentially until it reached the maximum capacity of the NHS, and then slowed down as the ICU beds saturated in the Italian regions of Lombardy, Piedmont, Marche, Trentino Alto Adige, Valle d'Aosta, which host 28% of the Italian population. The green triangle and diamond represent the lockdown day (March 9th 2020) and full lockdown day (March 21st 2020) respectively. The orange solid line and dotted line represent 100 and 50% of the total number of ICU beds in Italy before the onset of the epidemic, which was equal to 5090 [7]

containment measures are taken, the stronger these measures need to be to contain the diffusion of SARS-CoV-2, and could be anyways insufficient to avoid the catastrophic collapse of the NHS. For example, Japan and Singapore were able to avoid the lockdown of the population, because the governments implemented effective measures at the very early stage of the outbreak (Fig. 1).

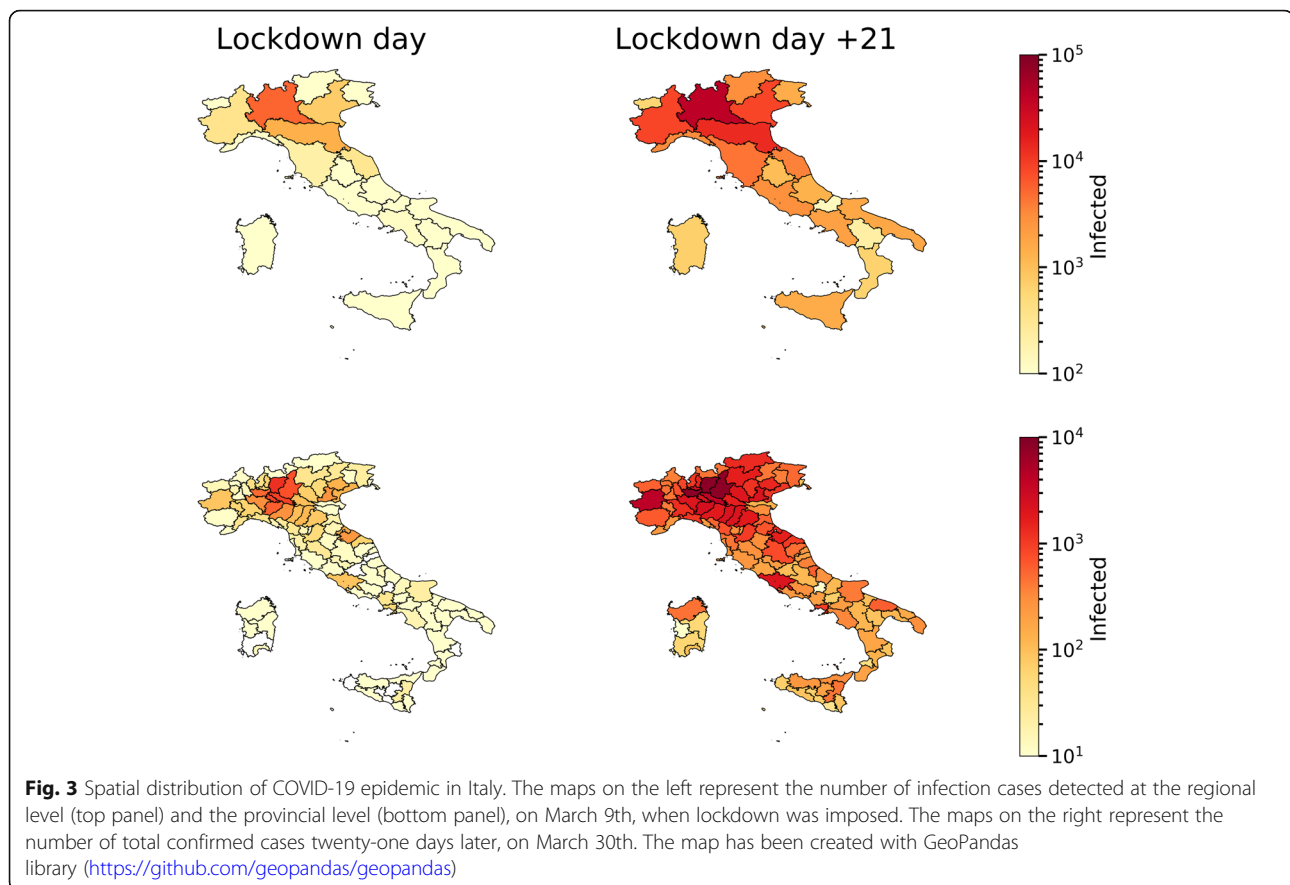
COVID-19 epidemic in Italy can be used as a precedent for other countries

From the early stage of the COVID-19 outbreak (February 24th 2020), Italy is providing statistics of the epidemic, through a daily bulletin and an open-access repository [8]. This repository contains daily counts of confirmed cases, hospitalized patients, ICU patients, and deceased patients, at the national and regional level (Fig. 3). This repository represents an important and unique source of information for other countries stroke by the pandemic. The number of ICU patients represents a more robust information compared to the number of infected people, which is subject to under-reporting. The number of infected people strongly depends on the number of performed tests and on the strategy of sampling of the population (e.g. only symptomatic people, randomly chosen people). Testing

capability and strategy might vary among different countries largely, while ICU patients count is a routine operation performed by all NHSs. ICU counts are more reliable also compared to deaths counts, since most patients dying with COVID-19 have comorbidities and ascertaining that COVID-19 was the primary cause of death can be complicated. Generally, ICU patients counts offers a far more reliable information of the evolution of COVID-19 epidemic, at least until the ICU capability of the NHS is saturated.

COVID-19 cases evolution in Italy

COVID-19 outbreak in Italy started in Codogno, a town of 15,868 inhabitants in Lombardy region. It is still unclear what events triggered the large outbreak in this region [9, 10]. After ten days from the first ICU patient (February, 20th 2020), the number of COVID-19 ICU patients was already larger than 100; after 18 days from the first ICU patient, ICU patients occupied about the 50% of the total ICU beds of Lombardy region. This percentage is close to the average percentage of ICU beds that are available during the whole year in Italy [7]. At the early stage of the COVID-19 outbreak, the number of ICU beds in Italy was approximately 5090 (i.e. 8,42



ICU beds per 100.000 inhabitants [7]) and Lombardy region had approximately 900 ICU beds (9 ICU beds per 100.000 inhabitants). The Italian government immediately implemented several measures to increase the number of available ICU beds, for example postponing non-essential surgical operations and purchasing mechanical ventilators for new ICUs, and to increase medical support, for example by recalling retired doctors. Yet, these measures offer what we call a *linear response*, which is not sufficient to face an exponential growth of ICU beds demand.

The Italian government implemented also a series of measures to slow down the diffusion of the virus. Schools and universities were closed in Lombardy on February 26th, and in rest of Italy on March 5th. On March 8th, Lombardy region ordered the lockdown of the populations (Decreto del Presidente del Consiglio dei Ministri 8 Marzo 2020). On the following day, the lockdown was extended to the entire nation. In Lombardy and in Italy, nurses, doctors and health-care professionals have fought with incredible strength, acting as war heroes in dark times. However, the ICUs rapidly saturated by COVID-19 ICU patients in Lombardy region (Fig. 4) and subsequently in other regions (Fig. 5). On March 21st, the Italian government imposed the full

lockdown of the nation, closing off all the non-essential companies and manufacturing plants.

Saturation of ICU can be predicted accurately early on

Here we show that it is possible to predict the date of saturation of the ICUs in a region early on, by using the temporal information about the number of available ICU beds. We focus on Lombardy region. The number of ICU patients in the region grew exponentially for the first ten days, starting from February 24th, and then slowed down as it reached the number of available ICU beds. We can predict the ICU saturation date by performing a linear regression of the logarithm of the number of ICU patients, starting from the first four data points (Fig. 4). This result shows that monitoring the ICUs statistics at the beginning of the epidemic allows countries to assess the date of possible saturation of the ICU beds early on. Monitoring the ICUs early in the outbreak is paramount: Lombardy, in Italy, has one the best NHS in the World [11, 12], therefore most countries will face the saturation of their ICU beds at earlier stages of the outbreak. It is worth to note that several factors affect the time to saturate the ICU beds. In particular, the saturation time depends on the connectivity of the population: the more people are connected within

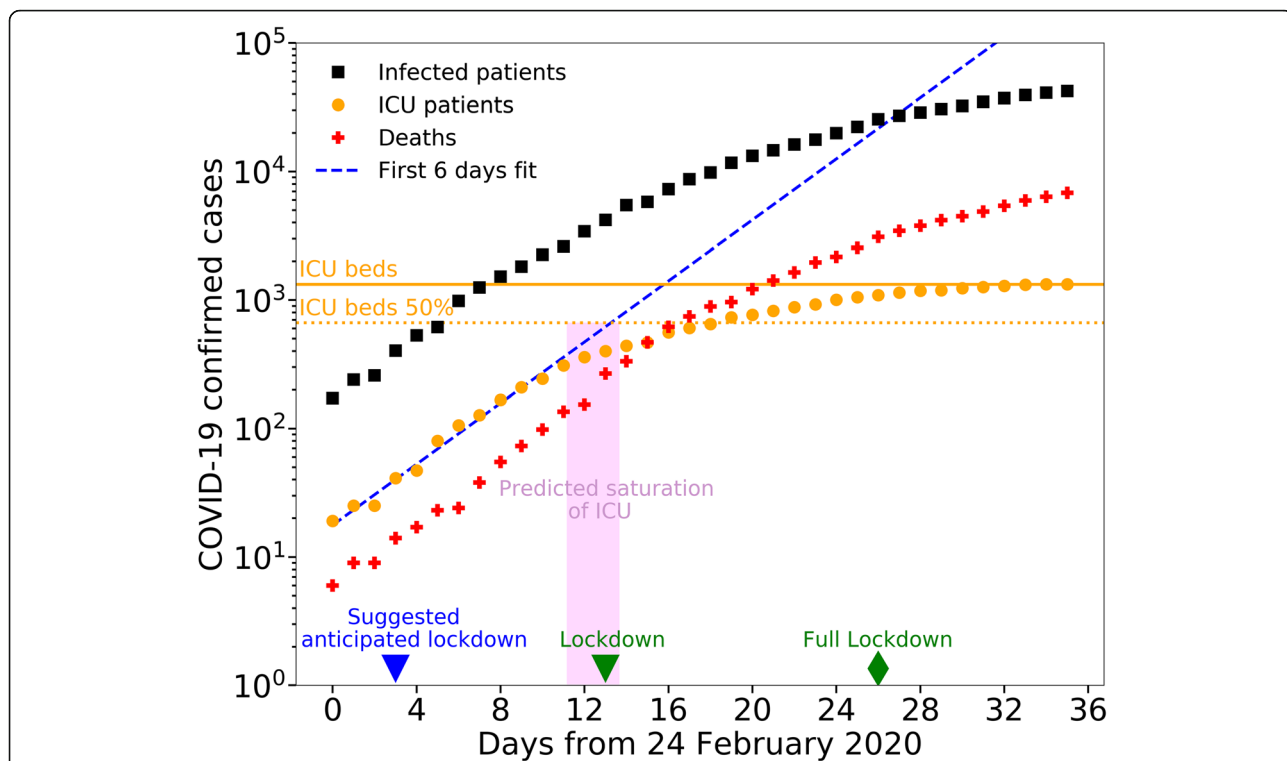


Fig. 4 The date of ICUs saturation can be predicted early on. The number of deaths (red crosses) grows exponentially in time in Lombardy region, Italy. The number of ICU patients (orange circles) flattens in time: this indicates the saturation of the ICU beds in the region. The dotted blue line is the linear regression of the first six orange data points. The day of the saturation can be predicted by linear regression, fitting the logarithm of the number of ICU patients at early stages of the epidemic: the timeline highlighted in magenta shows the predicted temporal range for the saturation of 50% of the ICU beds; the beginning and the end of the magenta range are obtained by fitting the first four (blue triangle) and nine orange data points respectively. To avoid ICUs saturation, an earlier lockdown (indicated by the blue triangle) would have been necessary. The green triangle and green diamond represent the lockdown day (March 8th 2020) and full lockdown day (March 21st 2020). The orange solid line and dotted line represent 100 and 50% of the actual total number of ICU beds in Lombardy

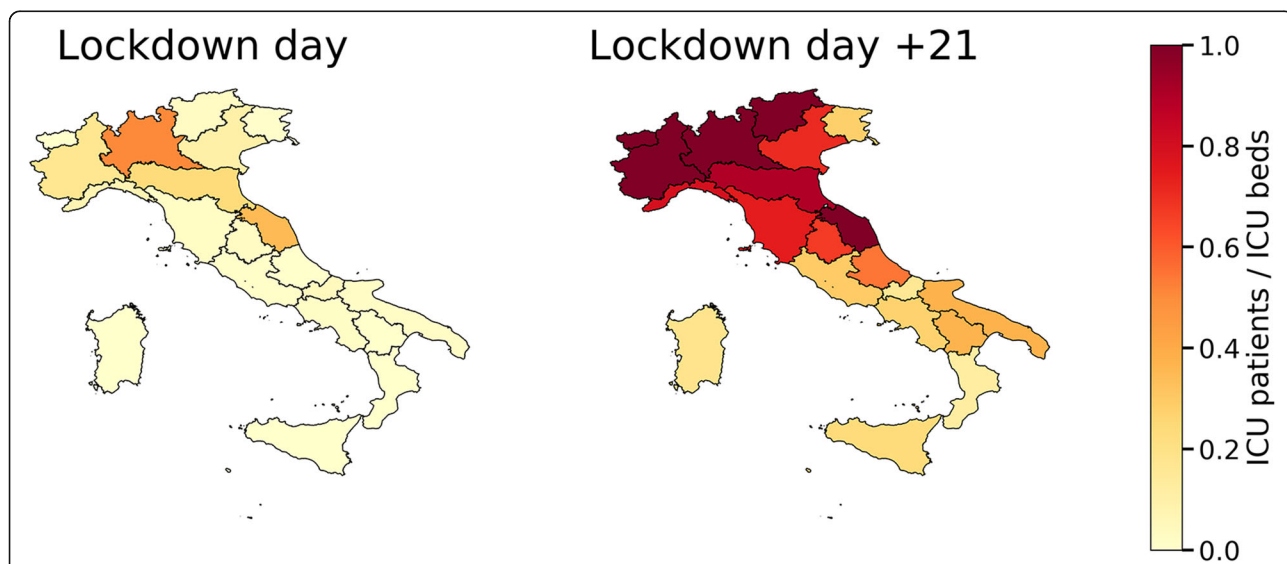


Fig. 5 Spatial distribution of COVID-19 ICU patients in Italy. The maps represent the ICUs saturation (number of ICU patients divided by number of ICU beds) at the regional level on March 9th (left panel), when the lockdown was imposed, and twenty-one days later, on March 30th (right panel). Here we use the regional number of ICU beds reported before the onset of the epidemic. The number of ICU beds was increased throughout the epidemic. The map has been created with GeoPandas library (<https://github.com/geopandas/geopandas>)

a region, the faster the infection diffuses [13]. Therefore, the risk of ICUs saturation is higher for the most developed and connected regions, and Lombardy is the most connected region of Italy. Moreover, if a lockdown measure is imposed, the ICUs saturation time depends on the incubation time of the disease and on the degree of adherence of the population to the lockdown.

Lockdown benefits for Italy

Here we analyze the effects of the lockdown of the Italian population. Italy imposed two major containment measures: the lockdown on March 9th 2020, and the full lockdown on March 21st 2020, where all non-essential companies and manufacturing plant were closed. These measures helped to avoid the collapse of the whole national health system, yet they could not avoid the saturation of the ICU beds in several Italian regions (Fig. 5).

The effects of the confinement measures become evident with some delay. Specifically, we expect the effect

on the number of ICU patients to appear within about 2 weeks (i.e., the maximum incubation time), and the effect on the number of deaths to appear in about 3 weeks (i.e., the time from infection to death) [4]. Because of the saturation of the ICU beds in several Italian regions, the number of ICU beds occupied in Italy was lower than the patients that required intensive care. Therefore, we analyze the Italian data excluding the regions where the ICUs had saturated (Fig. 6). This leaves us with 15 of the 20 regions, excluding about 28% of the Italian population. First, we assess the short-term lockdown effects analyzing data up to April 9th (Fig. 6a-b). We find that the growth of ICU patients closely follows a logistic trend, suggesting that the lockdown measures have effectively reduced the spread of the infection (Fig. 6a), as it has been for Hubei region [3]. In the same time interval, the cumulative number of deaths in time can be interpolated well using an exponential curve up to 11 days after the lockdown, and using a line for later data points

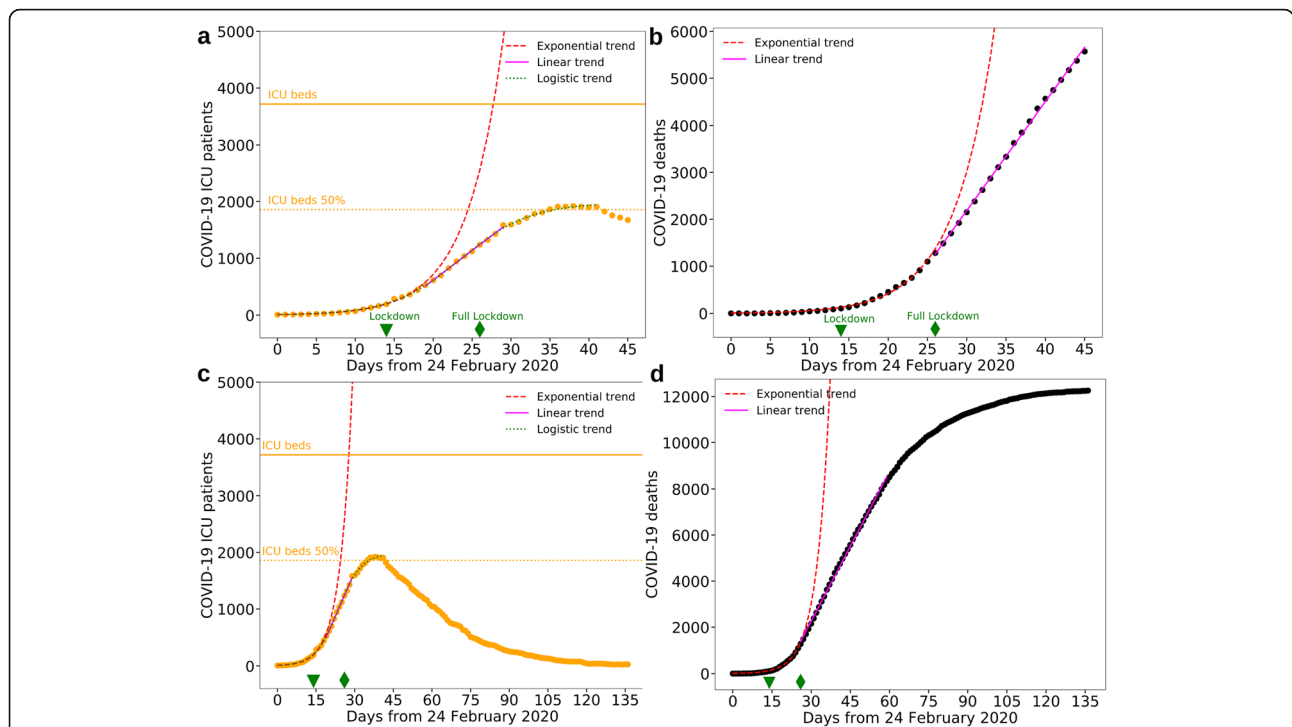


Fig. 6 Effect of lockdown in Italy. **a**, The number of ICU patients grows slower than exponential starting from March 14th, i.e., five days after the lockdown of March 9th (green triangle). Five days correspond to the current estimate of median incubation time of COVID-19 [14]. We divided the data points into three groups, before March 14th, between March 14th and March 24th, and up to April 5th. We fit the first group with an exponential curve (red dashed line, $ICU\ patients(t) \propto \exp[r t]$, $t = \text{days}$), the second group with a line (magenta line, $ICU\ patients(t) \propto b t$, $t = \text{days}$), and the third group with a logistic curve (green dashed line, $ICU\ patients(t) = k/(1 + q \exp[-p t])$, $t = \text{days}$). The best fit parameters are $r = 0.213$ (95% CI: 0.197–0.229), $b = 104$ (95% CI: 100–108), $k = 1980$ (95% CI: 1960–2000), $q = 203$ (95% CI: 175–231), $p = 0.225$ (95% CI: 0.219–0.231). The root mean square error (RMSE) and normalized-RMSE (n-RMSE) of the exponential fit are 13.80 and 3.1%, respectively. RMSE and n-RMSE for the linear fit and the logistic fit are 18.73 and 1.8%, and 20.02 and 1.0%, respectively. **b**, As for panel **a**, representing the number of deaths. The linear trend starts eleven days after the lockdown. The best fit parameters are $r = 0.197$ (95% CI: 0.189–0.205), and $b = 230$ (95% CI: 226–236). RMSE and n-RMSE for the exponential fit are 20.57 and 1.9%, respectively; RMSE and n-RMSE for the linear fit are 18.84 and 0.9%, respectively. **c-d**, As for panel **a-b**, up to 4 months after the lockdown declaration (July 9th). For all panels, we excluded data from the Italian regions where the ICUs saturated, i.e. Lombardy, Piedmont, Marche, Trentino Alto Adige, Valle d’Aosta, which host 28% of the total Italian population. The non-linear least squares problems have been solved using Levenberg-Marquardt algorithm, with NumPy library (Python)

(Fig. 6b). This implies that the lockdown has spared thousands of lives. Specifically, for the cumulative number of ICU patients, we obtain a good fit using an exponential curve ($\text{ICU patients}(t) \propto \exp[rt]$, $t = \text{days}$) up to 5 days after the lockdown (equal to the median incubation time of COVID-19 [14]), and a line ($\text{ICU patients}(t) \propto bt$, $t = \text{days}$) for later data points up to 15 days after the lockdown. Overall, a logistic curve ($\text{ICU patients}(t) = k/(1 + q \exp[-pt])$, $t = \text{days}$) represents well the trend of ICU patients in time (Fig. 6a). Finally, we analyze the long-term effects of lockdown, analyzing data up to July 9th (Fig. 6 c-d). The linear growth of deaths continues for at least 45 days after the lockdown declaration (Fig. 6d). In the same period, the ICU patients curve is flattened to zero (Fig. 6c).

Overall, this analysis suggests that after 5 days after the lockdown the growth of ICU patients start changing from exponential to linear, and in about 28 days reaches the upper plateau of the logistic trend. Regarding the number of deaths, after about 11 days the growth changes from exponential to linear, and after about 120 days the number approaches a plateau.

Conclusions

In this work, we analyzed the temporal evolution of COVID-19 outbreak in Italy up to 4 months after the national lockdown declaration of March 9th 2020, and we discussed the short-term (days) and long-term (months) impact of the lockdown in containing the diffusion. The saturation of the ICUs in many Italian regions suggests that containment measures were taken too late. Using Italy as precedent, other countries should impose these confinement measures at earlier stages of the outbreak to be able to protect their population from COVID-19. We show that countries can predict the date of saturation of their ICUs early on, as soon as an exponential growth of intensive care patients is observed, as it was in Lombardy region. The Italian case demonstrates that the national lockdown is effective in reducing the growth of ICU patients. The saturation of ICUs, thus the collapse of a NHS, would be catastrophic, affecting the entire population of a nation. People would die if they needed intensive care for any reason, regardless of their age or their wealth. The saturation of the Italian intensive care units suggests that other governments should act early to contain COVID-19 and consider stronger measures than lockdown, including immediate closing of non-essential companies and manufacturing plants.

Our results can help design better policies to contain the second rapid spread of infections currently observed worldwide. If mild restrictions are not sufficient to contain the infections and the exponential growth of ICU patients, the lockdown remains the only possible measure. We show that at least 5 days are needed from the

beginning of lockdown to change the ICU patients growth from exponential to linear, and the increase of ICU patients continues for at least 4 weeks. Moreover, the number of casualties caused by COVID-19 might linearly grow up to 45 days after the lockdown.

We strongly encourage any government to accurately share data, including ICU patients; this data will significantly help the understanding of present and future evolution of the COVID-19 pandemic. Italy has been the first country in Europe stroke by the COVID outbreak, and it has adopted a policy of wide dissemination of open data with detailed spatial structure. Unprecedented measures have been taken by the Italian government, including systematic sharing of ICUs information, and the lockdown of the country. Most likely, the decisions taken in Italy between February 24th and March 21st have saved thousands of lives, not only within national borders.

Abbreviations

COVID-19: Coronavirus Disease 2019; WHO: World Health Organization; NHS: National Health Systems; ICU: Intensive Care Units; SARS-CoV-2: Severe Acute Respiratory Syndrome Coronavirus 2

Acknowledgments

This manuscript has been written with the hope that the heroic resistance showed by the city of Bergamo, the Lombardy region and the whole of Italy will not be needed elsewhere.

The authors want to thank all the Italian nurses, doctors and health-care professionals that are fighting against an invisible enemy as war heroes in dark times. This manuscript is dedicated to the memory of Doctor Li Wenliang, who first tried to warn the World about COVID-19, and all the health-care professionals who died fighting against this virus.

Authors thank two anonymous reviewers for their useful comments and suggestions. This work is supported by the Institut Universitaire de France (IUF). This is IGP contribution #4179.

Authors' contributions

MS analyzed the data, conceived the manuscript and, together with FL, prepared the Figs. MS, ADC, ADO, FL and GO contributed to the interpretation of the data and the discussion of the results. MS and ADC wrote the manuscript, and all the authors reviewed it. The author(s) read and approved the final manuscript.

Funding

This work is supported by the Institut Universitaire de France (IUF).

Availability of data and materials

The Italian COVID-19 data are available through a GitHub repository managed by the DPC (Dipartimento della Protezione Civile - Presidenza del Consiglio dei Ministri):

<https://github.com/pcm-dpc/COVID-19>

For Fig. 1, we used World COVID-19 data published by the EU agency for Disease Prevention and Control:

<https://www.ecdc.europa.eu/en/publications-data/download-todays-data-geographic-distribution-covid-19-cases-worldwide>

For Fig. 1, we also used the dataset maintained by the Center for Systems Science and Engineering (CSSE) at Johns Hopkins University (JHU), for the time series of the Chinese Hubei region:

<https://github.com/CSSEGISandData/COVID-19>

For Fig. 1, we finally used the dataset maintained by the New York Times, for the time series of the US* (New York State + California State):

<https://github.com/nytimes/covid-19-data>

The number of available beds in ICU in Italy before the onset of the epidemic have been extracted from the dataset published by the Italian Ministry of Health:

http://www.dati.salute.gov.it/imgs/C_17_dataset_17_0_upFile.csv

Ethics approval and consent to participate

Not applicable.

Consent for publication

Not applicable.

Competing interests

The authors declare that they have no competing interests.

Author details

¹Université de Paris, Institut de physique du globe de Paris, CNRS, F-75005 Paris, France. ²International Prevention Research Institute, Dardilly, France. ³Department of Mathematics and Statistics, Strathclyde University, Glasgow, Scotland, UK. ⁴Dipartimento di Fisica 'Ettore Pancini', Università di Napoli Federico II, Naples, Italy. ⁵Institut Universitaire de France, Paris, France. ⁶School of Engineering and Applied Sciences, Harvard University, Cambridge, USA.

Received: 3 April 2020 Accepted: 18 November 2020

Published online: 26 November 2020

References

1. Bashir MF, MA B, Shahzad L. A brief review of socio-economic and environmental impact of Covid-19. *Air Qual Atmos Health*. 2020. <https://doi.org/10.1007/s11869-020-00894-8>.
2. Buheji M, da Costa CK, Beka G, Mavrić B, Leandro do Carmo de Souza Y, Souza da Costa Silva S, et al. the extent of COVID-19 pandemic socio-economic impact on global poverty. A global integrative multidisciplinary review. *Am J Econ*. 2020;10:213–24. <https://doi.org/10.5923/jeconomics.20201004.02>.
3. Huang S, Zhang Z, Wu Y, Mei S, Li Y, Xie X, et al. Evolving epidemiology and effect of non-pharmaceutical interventions on the epidemic of coronavirus disease 2019 in Shenzhen, China. *MedArxiv*. 2020.
4. Lauer SA, Grantz KH, Bi Q, Jones FK, Zheng Q, Meredith HR, et al. The incubation period of coronavirus disease 2019 (COVID-19) from publicly reported confirmed cases: estimation and application. *Ann Intern Med*. 2020;172:577–82. <https://doi.org/10.7326/M20-0504>.
5. d'Onofrio A, Manfredi P. Information-related changes in contact patterns may trigger oscillations in the endemic prevalence of infectious diseases. *J Theor Biol*. 2009;256:473–8. <https://doi.org/10.1016/j.jtbi.2008.10.005>.
6. Panatto D, Lai PL, Mosca S, Lecini E, Orsi A, Signori A, et al. Influenza vaccination in Italian healthcare workers (2018–2019 season): strengths and weaknesses. Results of a Cohort Study in Two Large Italian Hospitals. *Vaccines*. 2020;8:119. <https://doi.org/10.3390/vaccines8010119>.
7. Direzione Generale della Digitalizzazione del Sistema Informativo Sanitario e della Statistica - Ufficio di Statistica. *Annuario Statistico del Servizio Sanitario Nazionale - Assetto organizzativo, attività e fattori produttivi del SSN - Anno 2012*. 2019. <https://github.com/pcm-dpc/COVID-19>.
8. <https://github.com/pcm-dpc/COVID-19>.
9. Fattorini D, Regoli F. Role of the chronic air pollution levels in the Covid-19 outbreak risk in Italy. *Environ Pollut*. 2020;264:114732. <https://doi.org/10.1016/j.envpol.2020.114732>.
10. Usuelli M. The Lombardy region of Italy launches the first investigative COVID-19 commission. *Lancet*. 2020. [https://doi.org/10.1016/S0140-6736\(20\)32154-1](https://doi.org/10.1016/S0140-6736(20)32154-1).
11. Smith PC. Measuring health system performance. *Eur J Health Econ*. 2002;3:145–8. <https://doi.org/10.1007/s10198-002-0138-1>.
12. Ferre F, de Belvis AG iuli, Valerio L, Longhi S, Lazzari a, Fattore G, et al. Italy: health system review. *Health Syst Transit*. 2014;16:1–168 <http://www.ncbi.nlm.nih.gov/pubmed/25471543>.
13. Pastor-Satorras R, Castellano C, Van Mieghem P, Vespignani A. Epidemic processes in complex networks. *Rev Mod Phys*. 2015;87:925–79. <https://doi.org/10.1103/RevModPhys.87.925>.
14. Linton N, Kobayashi T, Yang Y, Hayashi K, Akhmetzhanov A, Jung S-M, et al. Incubation period and other epidemiological characteristics of 2019 novel coronavirus infections with right truncation: a statistical analysis of publicly available case data. *J Clin Med*. 2020;9:538. <https://doi.org/10.3390/jcm9020538>.

Publisher's Note

Springer Nature remains neutral with regard to jurisdictional claims in published maps and institutional affiliations.

Ready to submit your research? Choose BMC and benefit from:

- fast, convenient online submission
- thorough peer review by experienced researchers in your field
- rapid publication on acceptance
- support for research data, including large and complex data types
- gold Open Access which fosters wider collaboration and increased citations
- maximum visibility for your research: over 100M website views per year

At BMC, research is always in progress.

Learn more biomedcentral.com/submissions

