

# On the $\pi\pi$ continuum in the nucleon form factors and the proton radius puzzle<sup>\*\*\*</sup>

M. Hoferichter<sup>1,a</sup>, B. Kubis<sup>2</sup>, J. Ruiz de Elvira<sup>2</sup>, H.-W. Hammer<sup>3,4</sup>, and U.-G. Meißner<sup>2,5</sup>

<sup>1</sup> Institute for Nuclear Theory, University of Washington, Seattle, WA 98195-1550, USA

<sup>2</sup> Helmholtz-Institut für Strahlen- und Kernphysik (Theorie) and Bethe Center for Theoretical Physics, Universität Bonn, D-53115 Bonn, Germany

<sup>3</sup> Institut für Kernphysik, Technische Universität Darmstadt, D-64289 Darmstadt, Germany

<sup>4</sup> ExtreMe Matter Institute EMMI, GSI Helmholtzzentrum für Schwerionenforschung GmbH, D-64291 Darmstadt, Germany

<sup>5</sup> Institut für Kernphysik, Institute for Advanced Simulation, and Jülich Center for Hadron Physics, Forschungszentrum Jülich, D-52425 Jülich, Germany

Received: 22 September 2016

Published online: 16 November 2016 – © Società Italiana di Fisica / Springer-Verlag 2016

Communicated by B. Ananthanarayan

**Abstract.** We present an improved determination of the  $\pi\pi$  continuum contribution to the isovector spectral functions of the nucleon electromagnetic form factors. Our analysis includes the most up-to-date results for the  $\pi\pi \rightarrow \bar{N}N$  partial waves extracted from Roy-Steiner equations, consistent input for the pion vector form factor, and a thorough discussion of isospin-violating effects and uncertainty estimates. As an application, we consider the  $\pi\pi$  contribution to the isovector electric and magnetic radii by means of sum rules, which, in combination with the accurately known neutron electric radius, are found to slightly prefer a small proton charge radius.

## 1 Introduction

One of the most startling discoveries in low-energy hadron physics over the last years concerns the size of the proton, with spectroscopy measurements in muonic atoms [1–3] revealing that the electric charge radius of the proton might be significantly smaller than previously thought, with the average of extractions from hydrogen spectroscopy,  $r_E^p = 0.8758(77)$  fm [4],  $4.5\sigma$  larger than the result  $r_E^p = 0.84087(39)$  fm from muonic hydrogen. A third, independent method to determine the proton radius relies on low-energy electron-proton scattering experiments, extracting radii from the slope of the form factors. It is by combining hydrogen spectroscopy and scattering data that CODATA [4] quoted  $r_E^p = 0.8775(51)$  fm, a  $7\sigma$  deviation from muonic spectroscopy. For a more detailed discussion of this proton radius puzzle, including potential explanations by physics beyond the Standard Model and pathways towards its resolution by new experiments, we refer to [5, 6].

Evidently, even besides the possibility of error on the experimental side, exotic explanations for the proton-radius discrepancy such as [7–17] can only be seriously considered if the hadronic physics in each system is thoroughly understood. Here, we address aspects of the radius extraction from scattering data, the systematics of which have been discussed vigorously in the literature recently [18–28]. Irrespective of the challenges involved in data selection and radiative corrections, the extraction can be stabilized by respecting the analytic structure of the electromagnetic form factors [29], *e.g.*, by employing a conformal expansion. Going one step further, a dispersion theoretical analysis of nucleon form factors [20, 30–36] approaches the extraction by expressing the spectral functions in terms of the lowest intermediate states as well as effective couplings, and reconstructing the full form factor by means of a dispersion relation supplemented by superconvergence relations that follow from perturbative QCD [37]. In both cases the most important contribution is generated by the  $\pi\pi$  continuum, by definition in a dispersive analysis, but also in a conformal expansion, where the explicit consideration of  $\pi\pi$  intermediate states allows one to increase the threshold in the conformal mapping. It is worth noting that dispersive analyses of the nucleon form-factor data including the  $\pi\pi$  continuum in the spectral function consistently gave a small proton

\* Contribution to the Topical Issue “Exotic phenomena at the interface of nuclear and particle physics” edited by Balasubramanian Ananthanarayan, Bastian Kubis, Rishi Sharma.

\*\* Supplementary material in the form of .pdf files available from the Journal web page at

<http://dx.doi.org/10.1140/epja/i2016-16331-7>

<sup>a</sup> e-mail: mhofer@uw.edu

charge radius even before the emergence of the radius puzzle [30,31,33,34,36]. In principle, the  $\pi\pi$  continuum follows unambiguously from the partial waves for  $\pi\pi \rightarrow \bar{N}N$  analytically continued into the pseudophysical region as well as the pion vector form factor, but the last comprehensive analysis of the  $t$ -channel partial waves dates back to [38], based on the Karlsruhe-Helsinki partial-wave analysis [39]. Apart from outdated data input, the resulting spectral function has been criticized due to its lack of a thorough analysis of systematic uncertainties and consideration of isospin-violating corrections [25]. These shortcomings will be remedied in the present paper.

Due to crossing symmetry, the partial waves for  $\pi\pi \rightarrow \bar{N}N$  occur naturally in a dispersive analysis of pion-nucleon ( $\pi N$ ) scattering based on Roy-Steiner (RS) equations [40–46], in fact, in the same way as for nucleon form factors, it is the pseudophysical region  $t \geq 4M_\pi^2$  that dominates the dispersion integrals. In addition to the error estimates for the partial waves, we construct a description of the pion vector form factor fit to the latest experimental results from BaBar [47], KLOE [48], and BESIII [49] and consistent with the input for the  $\pi\pi$   $P$ -wave phase shifts used in the solution of the RS system. This procedure ensures that the resulting spectral function fulfills all available constraints from modern low-energy data, including the precision measurements of  $\pi N$  dynamics extracted from pionic atoms [50–54]. In addition to their relevance in stabilizing form-factor fits, the resulting spectral functions also find applications in improving the nucleon-pole-term contribution to bremsstrahlung of a  $\rho$  in proton-nucleus scattering [55] and in the transverse charge densities of the nucleon [56].

After reviewing the necessary formalism in sect. 2, we discuss the role of isospin-violating effects in detail in sect. 3. The results for the isovector spectral functions for the electric and magnetic nucleon form factors are provided in sect. 4, with applications to sum rules for form-factor normalizations and radii considered in sect. 5. Our conclusions are summarized in sect. 6.

## 2 Formalism

### 2.1 Nucleon form factors

Based on Lorentz, gauge, and parity invariance the matrix element of the electromagnetic current

$$j_{\text{em}}^\mu = \bar{q}\mathcal{Q}\gamma^\mu q, \quad (1)$$

with light quarks  $q = (u, d, s)^T$  and charges  $\mathcal{Q} = \text{diag}(2, -1, -1)/3$  (in units of the elementary charge  $e$ ), between nucleon states admits the decomposition

$$\langle N(p') | j_{\text{em}}^\mu | N(p) \rangle = \bar{u}(p') \left[ F_1^N(t) \gamma^\mu + \frac{i\sigma^{\mu\nu} q_\nu}{2m_N} F_2^N(t) \right] u(p), \quad (2)$$

where  $m_N$  refers to the nucleon mass ( $N = p, n$ ),  $F_1^N$  ( $F_2^N$ ) to the Dirac (Pauli) form factor, and  $q = p' - p$ ,  $t = q^2$ . The form factors are normalized according to

$$F_1^p(0) = 1, \quad F_1^n(0) = 0, \quad F_2^N(0) = \kappa_N, \quad (3)$$

with anomalous magnetic moments  $\kappa_p = 1.792847356(23)$  and  $\kappa_n = -1.91304272(45)$  [57]. We further define isoscalar and isovector combinations as

$$\begin{aligned} F_i^s(t) &= \frac{1}{2}(F_i^p(t) + F_i^n(t)), \\ F_i^v(t) &= \frac{1}{2}(F_i^p(t) - F_i^n(t)), \end{aligned} \quad (4)$$

and use the Sachs form factors

$$\begin{aligned} G_E^N(t) &= F_1^N(t) + \frac{t}{4m_N^2} F_2^N(t), \\ G_M^N(t) &= F_1^N(t) + F_2^N(t). \end{aligned} \quad (5)$$

The electric and magnetic radii are defined as  $r = \sqrt{\langle r^2 \rangle}$  with

$$\begin{aligned} \langle r_E^2 \rangle^p &= 6 \left[ \frac{d}{dt} G_E^p(t) \right]_{t=0}, \\ \langle r_M^2 \rangle^p &= \frac{6}{1 + \kappa_p} \left[ \frac{d}{dt} G_M^p(t) \right]_{t=0}, \\ \langle r_E^2 \rangle^n &= 6 \left[ \frac{d}{dt} G_E^n(t) \right]_{t=0}, \\ \langle r_M^2 \rangle^n &= \frac{6}{\kappa_n} \left[ \frac{d}{dt} G_M^n(t) \right]_{t=0}. \end{aligned} \quad (6)$$

The form factors fulfill dispersion relations of the form

$$F(t) = \frac{1}{\pi} \int_{t_0}^{\infty} dt' \frac{\text{Im} F(t')}{t' - t - i\epsilon}, \quad (7)$$

where the threshold depends on the allowed intermediate states. In the isospin limit,  $t_0 = 4(9)M_\pi^2$  for the isovector (isoscalar) combinations. This strict separation fails once isospin violation is permitted, as detailed in sect. 3.3. In particular, in the presence of isospin-violating corrections all contributions will be classified with respect to the nucleon states in which they occur, *i.e.*, isoscalar (isovector) terms are defined to contribute to the sum (difference) of proton and neutron. In the isovector channel the leading contribution to  $\text{Im} F$  is generated by  $\pi\pi$  intermediate states, see fig. 1. By cutting the pion propagators, it is clear that the corresponding imaginary part is related to the on-shell amplitudes for  $\pi\pi \rightarrow \bar{N}N$  and  $\pi\pi \rightarrow \gamma^*$ , a relation to be made more precise in the following subsections.

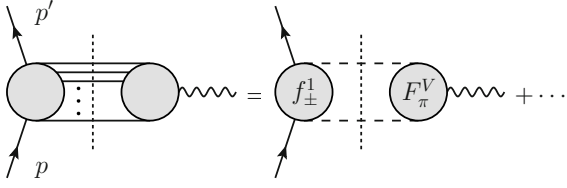
### 2.2 Pion-nucleon scattering

In the isospin limit, the amplitude for  $\pi N$  scattering

$$\pi^a(q) + N(p) \rightarrow \pi^b(q') + N(p'), \quad (8)$$

with pion isospin labels  $a, b$  and Mandelstam variables

$$s = (p + q)^2, \quad t = (p' - p)^2, \quad u = (p - q')^2, \quad (9)$$



**Fig. 1.** Unitarity relation for nucleon form factors. Solid, dashed, and wiggly lines denote nucleons, pions, and the external photon, respectively, while the short-dashed lines indicate the cutting of particle propagators. In the isovector channel, the sum over all intermediate states as represented by the first diagram starts with  $\pi\pi$ , whose contribution is fixed in terms of the  $\pi\pi \rightarrow \bar{N}N$   $P$ -waves  $f_{\pm}^I$  and the pion vector form factor  $F_{\pi}^V$ , see main text.

reduces to two scalar functions

$$T^{ba}(s, t) = \delta^{ba}T^+(s, t) + \frac{1}{2}[\tau^b, \tau^a]T^-(s, t),$$

$$T^I(s, t) = \bar{u}(p') \left\{ A^I(s, t) + \frac{1}{2}(\not{q} + \not{q}')B^I(s, t) \right\} u(p), \quad (10)$$

where  $\tau^a$  are isospin Pauli matrices and  $I = \pm$  refers to isoscalar/isovector amplitudes.

For the unitarity relation of the nucleon form factors we need the  $t$ -channel partial waves [58]

$$f_{+}^J(t) = -\frac{1}{4\pi} \int_0^1 dz_t P_J(z_t) \left\{ \frac{p_t^2}{(p_t q_t)^J} A^I - \frac{m_N z_t}{(p_t q_t)^{J-1}} B^I \right\},$$

$$f_{-}^J(t) = \frac{1}{4\pi} \frac{\sqrt{J(J+1)}}{2J+1} \frac{1}{(p_t q_t)^{J-1}} \times \int_0^1 dz_t [P_{J-1}(z_t) - P_{J+1}(z_t)] B^I, \quad (11)$$

with  $t$ -channel scattering angle

$$z_t = \frac{s - u}{4p_t q_t}, \quad (12)$$

momenta

$$p_t = \frac{1}{2}\sqrt{t - t_N}, \quad q_t = \frac{1}{2}\sqrt{t - t_{\pi}},$$

$$t_N = 4m_N^2, \quad t_{\pi} = 4M_{\pi}^2, \quad (13)$$

and angular momentum  $J$  ( $I = \pm$  corresponds to even/odd  $J$ ). The arguments of the invariant amplitudes in (11) are to be expressed as  $s = s(t, z_t)$ . Due to the quantum numbers of the external current, the unitarity relation projects out the  $P$ -waves  $f_{\pm}^I$ .

Finally, we need the subthreshold expansion of the  $\pi N$  amplitudes, which proceeds in terms of  $\nu = (s - u)/(4m_N)$  and  $t$  around  $\nu = t = 0$

$$\bar{A}^{\pm}(\nu, t) = \binom{1}{\nu} \sum_{n,m=0}^{\infty} a_{mn}^{\pm} \nu^{2m} t^n,$$

$$\bar{B}^{\pm}(\nu, t) = \binom{\nu}{1} \sum_{n,m=0}^{\infty} b_{mn}^{\pm} \nu^{2m} t^n, \quad (14)$$

where the upper/lower entry corresponds to  $I = \pm$ , and the Born-term-subtracted amplitudes are defined as

$$\bar{X}^{\pm}(\nu, t) = X^{\pm}(\nu, t) - X_{\text{pv}}^{\pm}(\nu, t), \quad X \in \{A, B\}, \quad (15)$$

with

$$B_{\text{pv}}^{\pm}(\nu, t) = g^2 \left( \frac{1}{m_N^2 - s} \mp \frac{1}{m_N^2 - u} \right) - \frac{g^2}{2m_N^2} \binom{0}{1},$$

$$A_{\text{pv}}^{\pm}(\nu, t) = \frac{g^2}{m_N} \binom{1}{0}. \quad (16)$$

$g$  denotes the  $\pi N$  coupling constant, to be identified later with  $g_c$  for the charged-pion vertex. Numerically, we will use  $g_c^2/(4\pi) = 13.7(0.2)$  [54], in line with the most recent determination from nucleon-nucleon scattering [59].

### 2.3 Pion vector form factor

The electromagnetic form factor of the pion is defined as

$$\langle \pi^+(p') | j_{\text{em}}^{\mu} | \pi^+(p) \rangle = (p + p')^{\mu} F_{\pi}^V(t). \quad (17)$$

The  $\pi\pi$  intermediate states produce the unitarity relation

$$\text{Im} F_{\pi}^V(t) = \sin \delta_1^1(t) e^{-i\delta_1^1(t)} F_{\pi}^V(t) \theta(t - t_{\pi}), \quad (18)$$

with the  $\pi\pi$   $P$ -wave phase shift  $\delta_1^1$ . Equation (18) reflects Watson's final-state theorem [60], which states that the phase of  $F_{\pi}^V$  has to coincide with the  $\pi\pi$  scattering phase shift (up to multiple integers of  $\pi$ ), to ensure that the imaginary part on the left-hand side of the equation stays real. In fact, neglecting higher intermediate states unitarity determines  $F_{\pi}^V(t)$  up to a polynomial  $P(t)$  in terms of the Omnès factor  $\Omega_1^1(t)$  [61]

$$F_{\pi}^V(t) = P(t) \Omega_1^1(t) = P(t) \exp \left\{ \frac{t}{\pi} \int_{t_{\pi}}^{\infty} dt' \frac{\delta_1^1(t')}{t'(t' - t)} \right\}. \quad (19)$$

In practice, the representation (19) indeed provides a very efficient parameterization of the experimental data, up to the distortions due to  $\rho$ - $\omega$  mixing. To include this isospin-violating effect, we use

$$F_{\pi}^V(t) = \left( 1 + \alpha t + \frac{\epsilon t}{M_{\omega}^2 - iM_{\omega}\Gamma_{\omega} - t} \right) \Omega_1^1(t), \quad (20)$$

with  $\omega$  mass  $M_{\omega}$  and width  $\Gamma_{\omega}$ .  $\alpha$  and  $\epsilon$  are fit to [47–49] below  $\sqrt{t} = 1$  GeV, using the same  $\pi\pi$  phase shifts as in the RS analysis [44], determined from Roy and Roy-like equations by the Bern [62, 63] and the Madrid-Cracow group [64]. We also use a variant of the Bernese phase shift that includes effects from  $\rho'$  and  $\rho''$  in an elastic approximation [65]. The sensitivity to the three different phase shifts and data sets will be part of the uncertainty estimate for the final spectral functions.

## 2.4 Unitarity relation

Taking everything together, the unitarity relations for the nucleon form factors become [29]

$$\begin{aligned}\text{Im } G_E^v(t) &= \frac{q_t^3}{m_N \sqrt{t}} (F_\pi^V(t))^* f_+^1(t) \theta(t - t_\pi), \\ \text{Im } G_M^v(t) &= \frac{q_t^3}{\sqrt{2t}} (F_\pi^V(t))^* f_-^1(t) \theta(t - t_\pi).\end{aligned}\quad (21)$$

Watson's theorem again ensures that the left-hand side of the equations stays real, as long as the same  $\pi\pi$  phase shift is used in the calculation of the pion form factor and the  $\pi\pi \rightarrow \bar{N}N$  partial waves, which is the reason why we consider the same three variants of  $\delta_1^1$  in the data fits for  $F_\pi^V$  as in the RS analysis of [44]. The full consistency among all ingredients entering the unitarity relation that is achieved in this way constitutes a key improvement over previous calculations.

In this context we comment on the range of validity of the  $2\pi$  approximation. Strictly speaking, the  $4\pi$  threshold opens at  $\sqrt{t} = 4M_\pi = 0.56$  GeV, but it is well known phenomenologically that the  $4\pi$  contribution is completely negligible below the  $\omega\pi$  threshold at  $\sqrt{t} = 0.92$  GeV [66] (see also [67]), and only becomes sizable once the  $\rho'$ ,  $\rho''$  resonances are excited. For this reason, we restricted the form-factor fits to the energy region below 1 GeV. We will show results up to the two-nucleon threshold, but due to the neglect of  $4\pi$  intermediate states, the final nucleon spectral function will be less reliable beyond 1 GeV, where such effects might become important. However, while a complete calculation would require the solution of a coupled-channel system of  $2\pi$  and  $4\pi$  for both  $F_\pi^V$  and  $f_\pm^1$ , the variant of the  $\pi\pi$  phase shift from [65] is constructed in such a way that a single-channel Omnès representation reproduces  $\rho'$  and  $\rho''$  effects as manifest in  $\tau \rightarrow \pi\pi\nu_\tau$  data [68]. The deviation of the corresponding result, taken to be our central solution, from the variants without  $\rho'$ ,  $\rho''$  admixture should therefore provide a realistic estimate of the potential impact of  $4\pi$  intermediate states.

## 3 Isospin-violating corrections

The isospin conventions in the RS analysis of [44] are chosen in such a way that the amplitudes in  $I = \pm$  basis are determined based on the charged-pion-proton channels  $\pi^\pm p \rightarrow \pi^\pm p$  with virtual photons removed, which is already very close to the amplitudes needed for the nucleon spectral functions. To identify additional corrections, we turn to the explicit form of the Muskhelishvili-Omnès [61, 69] representation for  $f_\pm^1(t)$  used in [44]

$$\begin{aligned}\Gamma^1(t) &= \Delta_\Gamma^1(t) + \frac{p_t^2}{12\pi m_N} \left\{ a_{00}^- (1 - t \dot{\Omega}_1^1(0)) + a_{01}^- t \right\} \Omega_1^1(t) \\ &\quad + \frac{t^2(t - t_N) \Omega_1^1(t)}{\pi} \int_{t_\pi}^{t_N} dt' \frac{\Delta_\Gamma^1(t') \sin \delta_1^1(t')}{t'^2(t' - t_N)(t' - t) |\Omega_1^1(t')|},\end{aligned}$$

$$\begin{aligned}f_-^1(t) &= \Delta_-^1(t) + \frac{t^2 \Omega_1^1(t)}{\pi} \int_{t_\pi}^{t_N} dt' \frac{\Delta_-^1(t') \sin \delta_1^1(t')}{t'^2(t' - t) |\Omega_1^1(t')|} \\ &\quad + \frac{\sqrt{2}}{12\pi} \left\{ \left( b_{00}^- - \frac{g^2}{2m_N^2} \right) (1 - t \dot{\Omega}_1^1(0)) + b_{01}^- t \right\} \Omega_1^1(t), \\ \Gamma^1(t) &= \frac{m_N}{\sqrt{2}} f_-^1(t) - f_+^1(t), \\ \Delta_\Gamma^1(t) &= \frac{m_N}{\sqrt{2}} \Delta_-^1(t) - \Delta_+^1(t),\end{aligned}\quad (22)$$

where in this context  $\Omega_1^1(t)$  refers to an Omnès function with finite cutoff  $t_N$  in the integral,  $\dot{\Omega}_1^1(0)$  its derivative at  $t = 0$ , and the inhomogeneities  $\Delta_\pm^1(t)$  comprise contributions from Born terms as well as the crossed-channel  $\pi N$  partial waves.

The first additional isospin-violating corrections would thus be expected from the proton-neutron mass difference in the Born terms and neutral-pion contributions to the subthreshold parameters (see (14) for their precise definition). Moreover, similarly to the pion vector form factor, there will be a contribution from  $\rho$ - $\omega$  mixing in the unitarity relation. In the following, we will consider each class of these potential corrections in detail.

### 3.1 Born terms

In chiral perturbation theory (ChPT) the  $\pi^\pm p \rightarrow \pi^\pm p$  Born terms with physical intermediate states take the form

$$\begin{aligned}A_{\pi^- p \rightarrow \pi^- p} &= \frac{\tilde{g}^2(m_p + m_n)}{2F_\pi^2} \frac{s - m_p^2}{s - m_n^2}, \\ A_{\pi^+ p \rightarrow \pi^+ p} &= \frac{\tilde{g}^2(m_p + m_n)}{2F_\pi^2} \frac{u - m_p^2}{u - m_n^2}, \\ B_{\pi^- p \rightarrow \pi^- p} &= -\frac{\tilde{g}^2}{2F_\pi^2} \left( 1 + \frac{(m_p + m_n)^2}{s - m_n^2} \right), \\ B_{\pi^+ p \rightarrow \pi^+ p} &= \frac{\tilde{g}^2}{2F_\pi^2} \left( 1 + \frac{(m_p + m_n)^2}{u - m_n^2} \right),\end{aligned}\quad (23)$$

where  $\tilde{g}$  denotes the chiral-limit value of the axial charge  $g_A$ . In this way, we can identify the  $\pi N$  coupling constant  $g_c$  for the charged-pion vertex via the residue of the  $B^\pm$ -amplitudes as

$$g_c = \frac{\tilde{g}(m_p + m_n)}{2F_\pi},\quad (24)$$

which in the isospin limit (and ignoring higher-order corrections) indeed reduces to the Goldberger-Treiman relation  $g_c = g_A m_N / F_\pi$ . Formulated in terms of the isospin basis, the relevant Born amplitudes therefore become

$$\begin{aligned}A^+ &= \frac{2g_c^2}{m_p + m_n} + g_c^2(m_n - m_p) \left( \frac{1}{s - m_n^2} + \frac{1}{u - m_n^2} \right), \\ A^- &= g_c^2(m_n - m_p) \left( \frac{1}{s - m_n^2} - \frac{1}{u - m_n^2} \right), \\ B^+ &= -g_c^2 \left( \frac{1}{s - m_n^2} - \frac{1}{u - m_n^2} \right), \\ B^- &= -\frac{2g_c^2}{(m_p + m_n)^2} - g_c^2 \left( \frac{1}{s - m_n^2} + \frac{1}{u - m_n^2} \right).\end{aligned}\quad (25)$$

The constant terms in  $A^+$  and  $B^-$  generalize  $g^2/m_N$  and  $-g^2/2m_N^2$  in (16), they are not included in the definition of the partial-wave-projected Born terms needed in (22). However, the implied shift in the subthreshold parameters is completely negligible, *e.g.*, in the case of  $B^-$  we find  $\Delta b_{00}^- = -3 \times 10^{-3} M_\pi^{-2}$ , to be compared with  $b_{00}^- = 10.49(11) M_\pi^{-2}$  [44]. Using the projection (11), with all kinematic factors understood to be defined by the charged-particle masses, we obtain for the partial-wave projection of the Born terms (25)

$$\begin{aligned}\tilde{N}_+^J(t) &= \frac{g_c^2}{4\pi} m_p \left( \frac{Q_J(\tilde{y})}{(p_t q_t)^J} \left( \tilde{y} + \frac{p_t m_n - m_p}{q_t} \right) - \delta_{J0} \right), \\ \tilde{N}_-^J(t) &= \frac{g_c^2}{4\pi} \frac{\sqrt{J(J+1)}}{2J+1} \frac{Q_{J-1}(\tilde{y}) - Q_{J+1}(\tilde{y})}{(p_t q_t)^J},\end{aligned}\quad (26)$$

with Legendre functions of the second kind

$$Q_J(z) = \frac{1}{2} \int_{-1}^1 dx \frac{P_J(x)}{z-x}, \quad (27)$$

and

$$\tilde{y} = \frac{t - 2M_\pi^2 + 2(m_n^2 - m_p^2)}{4p_t q_t}. \quad (28)$$

These corrections are potentially relevant because in the vicinity of  $t_\pi$  they scale as  $(m_n - m_p)/M_\pi \sim 1\%$  instead of  $(m_n - m_p)/m_p \sim 0.1\%$ . However, near threshold, where the effect is most pronounced, the difference in the spectral functions

$$\Delta \text{Im} G_E^v(t) = \frac{q_t^3}{m_N \sqrt{t}} |F_\pi^V(t)| \Delta \tilde{N}_+^1(t) \cos \delta_1^1(t) \theta(t - t_\pi), \quad (29)$$

$$\Delta \text{Im} G_M^v(t) = \frac{q_t^3}{\sqrt{2t}} |F_\pi^V(t)| \Delta \tilde{N}_-^1(t) \cos \delta_1^1(t) \theta(t - t_\pi),$$

is strongly suppressed by phase space, and the same is true for the Born-term contribution to the dispersive integrals in (22). In the end, the remaining isospin-violating effect due to the proton-neutron mass difference in the Born terms is much smaller than the uncertainty from the subthreshold parameters and phase shifts, and can therefore be safely ignored. These findings agree with the analysis of proton-neutron mass difference effects in the context of charge symmetry breaking in the nucleon form factors [70, 71].

### 3.2 Subthreshold parameters

The analysis of isospin violation in the low-energy parameters naturally proceeds in ChPT. In the context of the  $\pi N$  scattering lengths and the  $\pi N$   $\sigma$ -term large effects proportional to the pion mass difference  $\Delta_\pi = M_\pi^2 - M_{\pi^0}^2 = 2e^2 F_\pi^2 Z$  have been observed [42, 72, 73], due to an enhancement by  $\pi$  and numerical prefactors over the naively expected chiral scaling. Such corrections cannot appear in the spectral function of the nucleon form factors at one-loop order, but at two-loop level neutral-pion loops are

allowed. They lead to shifts in the subthreshold parameters in (22) proportional to  $\Delta_\pi$ , to be extracted from [74] in the following. Throughout, we follow the nomenclature of [72] for the low-energy constants, apart from the  $\bar{d}_i$ , for which we use the conventions of [75, 76] more frequently employed in isospin-symmetric ChPT studies of  $\pi N$  scattering.

As a first step, we need to identify the form of the Born terms in the presence of electromagnetic corrections to be subtracted from the  $\pi N$  amplitudes in the definition of the subthreshold parameters. Starting from the Goldberger-Treiman discrepancy in the form

$$g = \frac{m_N g_A}{F_\pi} \left( 1 - \frac{2M_{\pi^0}^2 \bar{d}_{18}}{g_A} \right), \quad (30)$$

we can work backwards to determine the explicit form of the Born terms to be subtracted in the chiral expansion. In particular, we need the renormalization

$$\begin{aligned}F_\pi = F \left\{ 1 + \frac{M_{\pi^0}^2}{F_\pi^2} l_4^r + \frac{10}{9} e^2 (k_1^r + k_2^r) + 2e^2 k_9^r \right. \\ \left. - \frac{M_\pi^2}{32\pi^2 F_\pi^2} \log \frac{M_\pi^2}{\mu^2} - \frac{M_{\pi^0}^2}{32\pi^2 F_\pi^2} \log \frac{M_{\pi^0}^2}{\mu^2} \right\},\end{aligned}\quad (31)$$

$$\begin{aligned}g_A = \tilde{g} \left\{ 1 + \frac{4d_{16}^r M_{\pi^0}^2}{g_A} - \frac{g_A^2 M_\pi^2}{16\pi^2 F_\pi^2} + \frac{e^2 F_\pi^2}{g_A} \left( g_1^r + g_2^r + \frac{g_{11}^r}{2} \right) \right. \\ \left. - \frac{(3g_A^2 + 1) M_\pi^2}{32\pi^2 F_\pi^2} \log \frac{M_\pi^2}{\mu^2} - \frac{(g_A^2 + 1) M_{\pi^0}^2}{32\pi^2 F_\pi^2} \log \frac{M_{\pi^0}^2}{\mu^2} \right\},\end{aligned}$$

with renormalized couplings depending on the renormalization scale  $\mu$ . In analogy to  $\bar{d}_{18}$  above, we also define

$$\begin{aligned}d_i^r &= \bar{d}_i + \frac{\beta_i}{32\pi^2 F_\pi^2} \log \frac{M_\pi^2}{\mu^2}, \\ g_i^r &= \bar{g}_i + \frac{\eta_i}{32\pi^2 F_\pi^2} \log \frac{M_\pi^2}{\mu^2}, \\ k_i^r &= \bar{k}_i + \frac{\sigma_i}{32\pi^2} \log \frac{M_\pi^2}{\mu^2},\end{aligned}\quad (32)$$

with  $\beta$ -functions  $\beta_i$ ,  $\eta_i$ , and  $\sigma_i$ , and only the  $Z$ -dependent terms in the  $\eta_i$  and  $\sigma_i$  as listed in [72] should be kept in order to isolate the  $\Delta_\pi$  effects.

In these conventions, one obtains a renormalized amplitude for the  $\pi^\pm p$  channels at leading-loop order  $\mathcal{O}(p^3)$  [74], including  $\Delta_\pi$  effects but no virtual photons. In particular, we verified that for  $e \rightarrow 0$  the known chiral expansion of the subthreshold parameters is reproduced. To proceed beyond the isospin limit we observe that all additional pole terms can be absorbed into a simple redefinition of the axial coupling

$$\tilde{g} \rightarrow \tilde{g} + e^2 F_\pi^2 \left( \frac{\bar{g}_{11}}{2} - \frac{2}{F_\pi^2} g_A \bar{k}_9 \right), \quad (33)$$



which amounts to a generalized Goldberger-Treiman discrepancy of

$$g_c = \frac{m_N g_A}{F_\pi} \left( 1 - \frac{2M_{\pi_0}^2 \bar{d}_{18}}{g_A} - \frac{e^2 F_\pi^2 \bar{g}_{11}}{2g_A} + 2e^2 \bar{k}_9 \right). \quad (34)$$

Note that just as  $\bar{d}_{18}$ , the low-energy constants  $\bar{g}_{11}$  and  $\bar{k}_9$  do not involve chiral logarithms, *i.e.*, the original  $g_{11}$  and  $k_9$  are finite.

After the shift (33) all pole terms disappear and the corrections to the subthreshold parameters relevant for the  $P$ -waves become

$$\begin{aligned} \Delta a_{00}^- &= e^2 (\bar{g}_6 + \bar{g}_8) + \frac{e^2}{F_\pi^2} \bar{k}_9 - \frac{4\Delta_\pi}{F_\pi^2} \bar{d}_5 - \frac{g_A^4 \Delta_\pi}{96\pi^2 F_\pi^4}, \\ \Delta a_{01}^- &= \frac{g_A^4 \Delta_\pi}{192\pi^2 F_\pi^4 M_\pi^2}, \end{aligned} \quad (35)$$

while  $b_{00}^-$  and  $b_{01}^-$  remain unaffected at  $\mathcal{O}(p^3)$ . With  $\bar{d}_5 = 0.14 \text{ GeV}^2$  from [44] and ignoring the  $g_i$  and  $k_i$  contributions, we obtain numerically

$$\Delta a_{00}^- = -3 \times 10^{-3} M_\pi^{-2}, \quad \Delta a_{01}^- = 0.5 \times 10^{-3} M_\pi^{-4}, \quad (36)$$

to be compared with the RS results [44]

$$\begin{aligned} a_{00}^- + b_{00}^- &= 1.411(15) M_\pi^{-2}, & a_{00}^- &= -9.08(12) M_\pi^{-2}, \\ a_{01}^- + b_{01}^- &= -0.141(5) M_\pi^{-4}, & a_{01}^- &= -0.35(2) M_\pi^{-4}, \end{aligned} \quad (37)$$

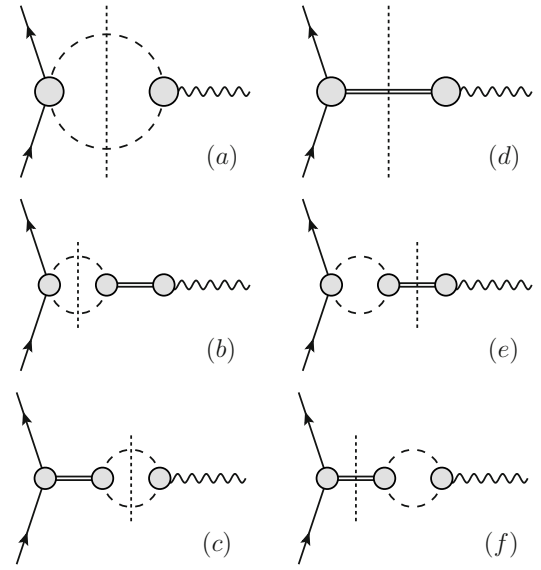
where the combinations  $a_{0n}^- + b_{0n}^-$  become relevant in  $f_+^1(t)$  for small values  $t \ll t_N$ . We conclude that at the present level of accuracy the isospin-violating effects in the subthreshold parameters are too small to matter. In particular, enhancements by  $\pi$  or numerical prefactors do not occur, so that the remaining shifts (35) become negligible compared to the RS uncertainties in the subthreshold parameters.

### 3.3 $\rho$ - $\omega$ mixing

$\rho$ - $\omega$  mixing occurs because the  $\omega$  has a non-vanishing branching fraction to  $2\pi$  [57]

$$\text{BR}(\omega \rightarrow \pi^+ \pi^-) = 1.53_{-0.13}^{+0.11} \%, \quad (38)$$

which leads to observable mixing effects in the pion vector form factor as measured in  $e^+e^-$  scattering. In principle, this implies that the  $2\pi$  and  $3\pi$  channels are coupled and can no longer be studied separately, as reflected by the fact that the inclusion of the  $\omega$  propagator in (20) spoils the cancellation of imaginary parts on the right-hand side of (21). The origin of this behavior is illustrated in fig. 2: eq. (21) corresponds to the  $2\pi$  cut in diagram (a), while the  $\omega$  admixture to the pion vector form factor is represented by diagram (b). In the same way, there should be an isospin-violating  $\omega$ -exchange contribution to the  $\pi\pi \rightarrow \bar{N}N$  amplitude, see diagram (c). Approximating



**Fig. 2.** Panel (a): unitarity diagram for the  $2\pi$  cut; panel (d): unitarity diagram for the  $3\pi$  cut approximated by  $\omega$  exchange; panels (b), (c): isospin-violating contributions to the  $2\pi$  cut due to the  $\omega \rightarrow 2\pi$  coupling; panels (e), (f): isospin-violating contributions to the  $3\pi$  cut. Double lines denote the  $\omega$  propagator, otherwise notation as in fig. 1.

the  $3\pi$  intermediate states by  $\omega$  exchange, the primary  $3\pi$  cut corresponds to putting the  $\omega$  propagator on-shell, as in diagram (d). In addition, there will be isospin-violating corrections represented by the exact same diagrams as in the left column, the sole difference being that the  $\omega$  propagator is cut first. Only the combination of all diagrams will result in a consistent spectral function.

However, we recall that in the presence of isospin violation isoscalar and isovector contributions are to be classified according to their nucleon couplings. In particular, the  $\omega$  couplings to the nucleon do not distinguish between proton and neutron, so that, in these conventions, diagrams (c) and (f) should, together with diagram (d), be included in the isoscalar spectral functions. By definition, the corresponding isospin-violating effects depend on the  $\omega$  couplings to the nucleon [70, 71]. As far as the isovector spectral functions are concerned, the only new contribution is given by diagram (e), with a sub-amplitude  $\bar{N}N\omega$  that can again be reconstructed by means of a dispersion relation. Taking everything together we find

$$\begin{aligned} \text{Im } G_E^v(t) &= \frac{q_t^3}{m_N \sqrt{t}} |\Omega_1^1(t)| |f_+^1(t)| \theta(t - t_\pi) \\ &\times \left( 1 + \alpha t + \frac{\epsilon t}{M_\omega^2 + iM_\omega \Gamma_\omega - t} \right) \\ &+ \epsilon \text{Im} \left( \frac{t}{M_\omega^2 - iM_\omega \Gamma_\omega - t} \right) \\ &\times \frac{1}{\pi} \int_{t_\pi}^\infty dt' \frac{q_{t'}^3}{m_N \sqrt{t'}} |\Omega_1^1(t')| |f_+^1(t')| \\ &\quad \frac{1}{t' - t - i\epsilon}, \end{aligned}$$

$$\begin{aligned}
\text{Im } G_M^v(t) &= \frac{q_t^3}{\sqrt{2t}} |\Omega_1^1(t)| |f_-^1(t)| \theta(t - t_\pi) \\
&\times \left( 1 + \alpha t + \frac{\epsilon t}{M_\omega^2 + iM_\omega \Gamma_\omega - t} \right) \\
&+ \epsilon \text{Im} \left( \frac{t}{M_\omega^2 - iM_\omega \Gamma_\omega - t} \right) \\
&\times \frac{1}{\pi} \int_{t_\pi}^{\infty} dt' \frac{q_{t'}^3}{\sqrt{2t'}} |\Omega_1^1(t')| |f_-^1(t')| \\
&\quad \frac{1}{t' - t - i\epsilon}. \quad (39)
\end{aligned}$$

Strictly speaking the narrow-width approximation for the  $\omega$  only works at  $t = M_\omega^2$ , *i.e.*

$$\text{Im} \left( \frac{t}{M_\omega^2 - iM_\omega \Gamma_\omega - t} \right) \rightarrow \pi M_\omega^2 \delta(t - M_\omega^2). \quad (40)$$

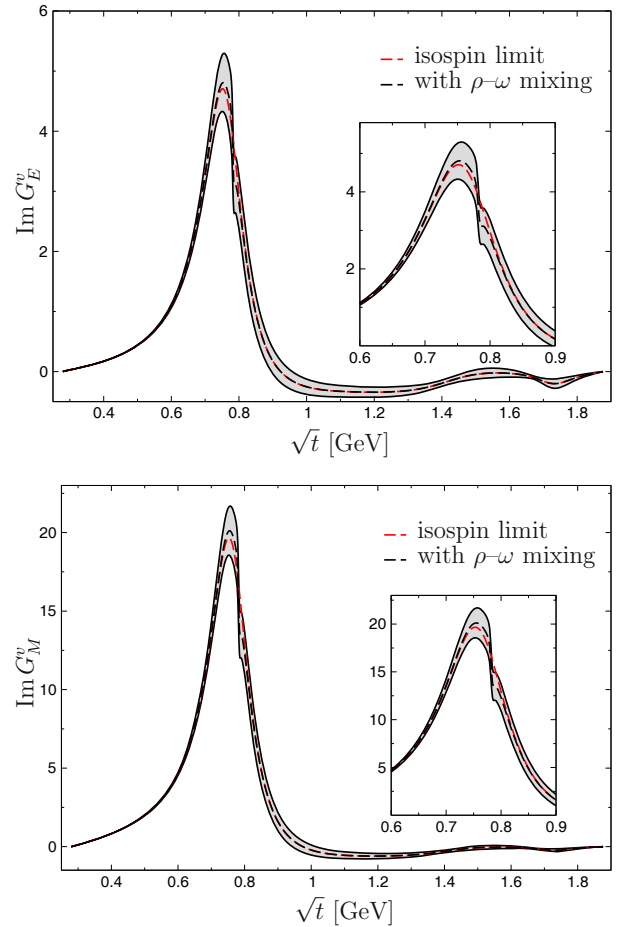
Separating real and imaginary part of the dispersive integral in (39) and treating the  $\omega$  propagator from the representation of the pion form factor in the same way proves that at  $t = M_\omega^2$  indeed the imaginary parts on the right-hand side cancel. Beyond  $t = M_\omega^2$ , the use of the same Breit-Wigner approximation in both cases ensures that this cancellation also works for arbitrary  $t \geq t_\pi$ . Since the real part of the diagram-(e) contribution cannot be used down to  $t_\pi$  —it exhibits the wrong threshold behavior— we introduce a step function that puts this term to zero below  $t = 9M_\pi^2$ , the nominal threshold of the  $3\pi$  channel. Given the small width of the  $\omega$  the choice of this threshold is immaterial, all effects are localized closely around  $t = M_\omega^2$ . For the sum rules studied in sect. 5, we also compared the outcome using a strict  $\delta$ -function or a Breit-Wigner representation with a finite width, with the result that the difference in the integrated quantity is hardly visible.

## 4 Results for the spectral functions

Our final result for the isovector spectral functions, derived based on (39), are shown in fig. 3. The uncertainty band covers the following effects, added in quadrature:

- 1) subthreshold parameters,
- 2)  $\pi\pi$  phase shift  $\delta_1^1(t)$ ,
- 3) data for pion vector form factor  $F_\pi^V(t)$ .

The uncertainties from the RS determination of the subthreshold parameters,  $b_{00}^-$ ,  $b_{01}^-$ ,  $a_{00}^-$ ,  $a_{01}^-$ , are propagated using their full covariance matrix. This is the dominant source of uncertainty below 1 GeV. As detailed in sect. 2, we use three variants of  $\delta_1^1(t)$ , consistent with the corresponding input in the RS solution, one of which includes the effects of  $\rho'$ ,  $\rho''$  in an elastic approximation and is taken as our central solution.  $F_\pi^V(t)$  is fit to the latest experimental results from BaBar [47], KLOE [48], and BESIII [49], restricting the fit region to  $\sqrt{t} \leq 1$  GeV, where our representation can be rigorously justified. The central value is defined as the average between the three experiments, with uncertainties estimated by the variation among them. Although we do include some information



**Fig. 3.** Isovector spectral functions for  $G_E^v$  and  $G_M^v$ . The black dashed line gives our central solution, the gray band the uncertainty estimate, and the red dashed line the result if  $\rho$ - $\omega$  mixing is turned off. The insets magnify the region around the  $\rho$  peak. pdf files of the results are available as supplementary material.

on  $4\pi$  intermediate states by means of the  $\pi\pi$  phase shift, we stress that above 1 GeV we do not have a complete description. Here, the interplay with the  $4\pi$  channel might introduce additional uncertainties.

Finally, fig. 3 also shows the results when  $\rho$ - $\omega$  mixing is switched off. The distortions due to this remaining isospin-violating effect are found to be relatively minor, but this is also a consequence of (39): the new contribution from cutting the  $\omega$  propagator tends to cancel  $\rho$ - $\omega$  mixing in the pion form factor. In addition to using consistent input for the  $\pi\pi$  phase shift in all parts of the calculation, updating the  $\pi N$  partial waves to the latest phenomenological results, and providing thorough uncertainty estimates, the improved treatment of  $\rho$ - $\omega$  mixing constitutes a major advancement compared to previous analyses.

Given that the final uncertainties are dominated by the  $\pi\pi \rightarrow \bar{N}N$  partial waves, the comparison to the KH80 amplitudes as detailed in [44] implies that the resulting spectral functions are consistent with [38] within uncertainties once the pion form factor is updated. The slight enhancement of the spectral function near the  $\rho$  peak ob-

served in [35] compared to our result is related to the assumption  $(F_\pi^V)^* f_\pm^1 \rightarrow |F_\pi^V| |f_\pm^1|$  in the unitarity relation, and does not occur in the full treatment of  $\rho$ - $\omega$  mixing according to (39).

## 5 Sum rules

Based on the generic form of the dispersion relations (7), it is straightforward to derive sum rules for the normalization and derivatives of the isovector form factors. We obtain

$$\begin{aligned} G_E^v(0) &= \frac{1}{\pi} \int_{t_\pi}^{\infty} dt' \frac{\text{Im} G_E^v(t')}{t'} = \frac{1}{2}, \\ G_M^v(0) &= \frac{1}{\pi} \int_{t_\pi}^{\infty} dt' \frac{\text{Im} G_M^v(t')}{t'} = \frac{1 + \kappa_p - \kappa_n}{2}, \\ \langle r_E^2 \rangle^v &= \frac{6}{\pi} \int_{t_\pi}^{\infty} dt' \frac{\text{Im} G_E^v(t')}{t'^2} = \frac{1}{2} [\langle r_E^2 \rangle^p - \langle r_E^2 \rangle^n], \\ \langle r_M^2 \rangle^v &= \frac{6}{\pi} \int_{t_\pi}^{\infty} dt' \frac{\text{Im} G_M^v(t')}{t'^2} \\ &= \frac{1}{2} [(1 + \kappa_p) \langle r_M^2 \rangle^p - \kappa_n \langle r_M^2 \rangle^n], \end{aligned} \quad (41)$$

where the magnetic moments in  $\langle r_M^2 \rangle^v$  compensate for the conventional normalization in (6). Note that the sum rules for the radii remain unchanged if a once-subtracted dispersion relation is used instead of the unsubtracted one in (7). As consequence, the sum-rule results regarding the proton radius puzzle are independent of the dispersion relation assumed for the form factors.

Our results for these sum rules, using the  $\pi\pi$  spectral functions presented in the previous section, are summarized in table 1. To estimate the sensitivity of the integrals to the high-energy tail, we show results both for an integral cutoff  $\Lambda = 1 \text{ GeV}$  and  $\Lambda = 2m_N$ . As expected, the sum rules for the normalization converge slowly at best, for  $\Lambda = 2m_N$  our central values differ from the exact results by about 30%. In contrast, the shift observed in the radii between  $\Lambda = 1 \text{ GeV}$  and  $\Lambda = 2m_N$  is quite small, in fact, smaller than the uncertainty estimate from the spectral function below 1 GeV. To make this statement more quantitative, we consider an additional effective narrow resonance with mass  $M_R$  in the spectral function

$$\text{Im} G_{E/M}^v(t) = c_{E/M}^v \pi M_R^2 \delta(t - M_R^2), \quad (42)$$

with  $c_E^v = -0.07$ ,  $c_M^v = -0.55$  to make the sum rules for the normalization agree within  $1\sigma$  with their expected values. The impact on the radii,

$$\Delta \langle r_{E/M}^2 \rangle^v = \frac{6c_{E/M}^v}{M_R^2}, \quad (43)$$

can be made arbitrarily small by taking the resonance mass to infinity, but even in the most pessimistic scenario where  $M_R = (1.4 \dots 1.6) \text{ GeV}$  is varied within the energy range where  $\rho'$ ,  $\rho''$  become relevant we find  $\Delta \langle r_E^2 \rangle^v =$

**Table 1.** Sum rules for form-factor normalizations and radii, evaluated with integral cutoff  $\Lambda$ .

	$\Lambda = 1 \text{ GeV}$	$\Lambda = 2m_N$	Exact
$G_E^v(0)$	0.76(8)	0.68(11)	0.5
$G_M^v(0)$	3.34(25)	3.21(30)	2.35
$\langle r_E^2 \rangle^v [\text{fm}^2]$	0.418(32)	0.405(36)	
$\langle r_M^2 \rangle^v [\text{fm}^2]$	1.83(10)	1.81(11)	

$-(0.006 \dots 0.008) \text{ fm}^2$ ,  $\Delta \langle r_M^2 \rangle^v = -(0.05 \dots 0.07) \text{ fm}^2$ . In particular the electric radius as predicted from the sum rules should therefore be reasonably stable with respect to the contribution from higher intermediate states.

First, we turn to the magnetic radius. Although [21] quotes a much lower value,  $r_M^p = 0.777(17) \text{ fm}$ , the tensions between different analyses are in general less severe than for the electric radius, *e.g.*, comparing  $r_M^p = 0.86_{-0.03}^{+0.02} \text{ fm}$ ,  $r_M^n = 0.88(5) \text{ fm}$  [20] and  $r_M^p = 0.87(2) \text{ fm}$ ,  $r_M^n = 0.89(3) \text{ fm}$  [23]. The corresponding results for the isovector combination,  $\langle r_M^2 \rangle^v = 1.78_{-0.11}^{+0.10} \text{ fm}^2$  and  $\langle r_M^2 \rangle^v = 1.81(7) \text{ fm}^2$  (see footnote<sup>1</sup>), are in good agreement with our sum-rule value  $\langle r_M^2 \rangle^v = 1.81(11) \text{ fm}^2$ .

In contrast to the proton radius, the electric charge radius of the neutron is far less contentious, the PDG quotes  $\langle r_E^2 \rangle^n = -0.1161(22) \text{ fm}^2$  [57], mainly based on [77, 78]. With the neutron radius determined, the proton radius puzzle can be translated into an isovector radius puzzle, with  $r_E^p = 0.841 \text{ fm}$  and  $r_E^n = 0.876 \text{ fm}$  corresponding to  $\langle r_E^2 \rangle^v = 0.412 \text{ fm}^2$  and  $\langle r_E^2 \rangle^v = 0.442 \text{ fm}^2$ , respectively. Our sum-rule result  $\langle r_E^2 \rangle^v = 0.405(36) \text{ fm}^2$  could thus be interpreted as a mild preference for the small radius, but in view of the uncertainty estimate the constraint from the  $\pi\pi$  spectral function alone is clearly not sufficient to distinguish between the two scenarios.

## 6 Conclusions

In this paper we provided an updated analysis of the  $\pi\pi$  contribution to the isovector spectral functions of the nucleon electromagnetic form factors, based on the  $\pi\pi \rightarrow \bar{N}N$  partial waves as determined recently from Roy-Steiner equations and including the most recent experimental results for the pion vector form factor. Special attention is paid towards consistency of the various input quantities, in particular as regards the  $\pi\pi$  phase shift used in the calculation, and towards estimating the potential impact of isospin-violating corrections. The constraints provided by our results for the spectral functions, which, for the first time, include a thorough uncertainty estimate, should prove valuable in future analyses of the nucleon form factors.

As an application, we studied the  $\pi\pi$  saturation of the sum rules for form-factor normalizations and radii. While,

<sup>1</sup> Due to isospin considerations, the errors for proton and neutron radii in [23] are not independent. Since we do not include this correlation, the error in the isovector combination should be taken as indicative.



as expected, the sum rules for the normalizations are at best slowly convergent, those for the radii prove to be more stable, with a resulting value for the isovector magnetic radius in good agreement with previous determinations. Taking the neutron electric radius from the literature, we find a slight preference for a small proton charge radius, but the uncertainties in the spectral-function constraint alone are too large to draw firm conclusions. However, the strategy of concentrating on the isovector radius offers synergies with lattice calculations, where due to disconnected diagrams in the isoscalar form factor the isovector combination can be determined more accurately. With input from phenomenology for the neutron radius, the isovector part alone already has important implications for the interpretation of the proton radius puzzle.

Financial support by the DFG (SFB/TR 16, “Subnuclear Structure of Matter”, SFB/TR 110, “Symmetries and the Emergence of Structure in QCD”, SFB 1245, “Nuclei: From Fundamental Interactions to Structure and Stars”), and the DOE (Grant No. DE-FG02-00ER41132) is gratefully acknowledged. The work of UGM was supported in part by The Chinese Academy of Sciences (CAS) President’s International Fellowship Initiative (PIFI) Grant No. 2015VMA076.

## References

- R. Pohl *et al.*, Nature **466**, 213 (2010).
- A. Antognini *et al.*, Science **339**, 417 (2013).
- R. Pohl *et al.*, Science **353**, 669 (2016).
- P.J. Mohr, B.N. Taylor, D.B. Newell, Rev. Mod. Phys. **84**, 1527 (2012) arXiv:1203.5425 [physics.atom-ph].
- R. Pohl, R. Gilman, G.A. Miller, K. Pachucki, Annu. Rev. Nucl. Part. Sci. **63**, 175 (2013) arXiv:1301.0905 [physics.atom-ph].
- C.E. Carlson, Prog. Part. Nucl. Phys. **82**, 59 (2015) arXiv:1502.05314 [hep-ph].
- P. Brax, C. Burrage, Phys. Rev. D **83**, 035020 (2011) arXiv:1010.5108 [hep-ph].
- V. Barger, C.W. Chiang, W.Y. Keung, D. Marfatia, Phys. Rev. Lett. **106**, 153001 (2011) arXiv:1011.3519 [hep-ph].
- D. Tucker-Smith, I. Yavin, Phys. Rev. D **83**, 101702 (2011) arXiv:1011.4922 [hep-ph].
- B. Batell, D. McKeen, M. Pospelov, Phys. Rev. Lett. **107**, 011803 (2011) arXiv:1103.0721 [hep-ph].
- V. Barger, C.W. Chiang, W.Y. Keung, D. Marfatia, Phys. Rev. Lett. **108**, 081802 (2012) arXiv:1109.6652 [hep-ph].
- C.E. Carlson, B.C. Rislw, Phys. Rev. D **86**, 035013 (2012) arXiv:1206.3587 [hep-ph].
- L.B. Wang, W.T. Ni, Mod. Phys. Lett. A **28**, 1350094 (2013) arXiv:1303.4885 [hep-ph].
- R. Onofrio, EPL **104**, 20002 (2013) arXiv:1312.3469 [hep-ph].
- S.G. Karshenboim, D. McKeen, M. Pospelov, Phys. Rev. D **90**, 073004 (2014) **90** 079905 (Addendum) (2014) arXiv:1401.6154 [hep-ph].
- C.E. Carlson, M. Freid, Phys. Rev. D **92**, 095024 (2015) arXiv:1506.06631 [hep-ph].
- Y.S. Liu, D. McKeen, G.A. Miller, Phys. Rev. Lett. **117**, 101801 (2016) arXiv:1605.04612 [hep-ph].
- A1 Collaboration (J.C. Bernauer *et al.*), Phys. Rev. Lett. **105**, 242001 (2010) arXiv:1007.5076 [nucl-ex].
- R.J. Hill, G. Paz, Phys. Rev. D **82**, 113005 (2010) arXiv:1008.4619 [hep-ph].
- I.T. Lorenz, H.-W. Hammer, U.-G. Meißner, Eur. Phys. J. A **48**, 151 (2012) arXiv:1205.6628 [hep-ph].
- A1 Collaboration (J.C. Bernauer *et al.*), Phys. Rev. C **90**, 015206 (2014) arXiv:1307.6227 [nucl-ex].
- I.T. Lorenz, U.-G. Meißner, Phys. Lett. B **737**, 57 (2014) arXiv:1406.2962 [hep-ph].
- Z. Epstein, G. Paz, J. Roy, Phys. Rev. D **90**, 074027 (2014) arXiv:1407.5683 [hep-ph].
- I.T. Lorenz, U.-G. Meißner, H.-W. Hammer, Y.-B. Dong, Phys. Rev. D **91**, 014023 (2015) arXiv:1411.1704 [hep-ph].
- G. Lee, J.R. Arrington, R.J. Hill, Phys. Rev. D **92**, 013013 (2015) arXiv:1505.01489 [hep-ph].
- K. Griffioen, C. Carlson, S. Maddox, Phys. Rev. C **93**, 065207 (2016) arXiv:1509.06676 [nucl-ex].
- R.J. Hill, arXiv:1605.02613 [hep-ph].
- J.C. Bernauer, M.O. Distler, arXiv:1606.02159 [nucl-th].
- W.R. Frazer, J.R. Fulco, Phys. Rev. **117**, 1609 (1960).
- G. Höhler *et al.*, Nucl. Phys. B **114**, 505 (1976).
- G. Höhler, E. Pietarinen, Nucl. Phys. B **95**, 210 (1975).
- G. Höhler, E. Pietarinen, Phys. Lett. B **53**, 471 (1975).
- P. Mergell, U.-G. Meißner, D. Drechsel, Nucl. Phys. A **596**, 367 (1996) arXiv:hep-ph/9506375.
- H.W. Hammer, U.-G. Meißner, Eur. Phys. J. A **20**, 469 (2004) arXiv:hep-ph/0312081.
- M.A. Belushkin, H.-W. Hammer, U.-G. Meißner, Phys. Lett. B **633**, 507 (2006) arXiv:hep-ph/0510382.
- M.A. Belushkin, H.-W. Hammer, U.-G. Meißner, Phys. Rev. C **75**, 035202 (2007) arXiv:hep-ph/0608337.
- G.P. Lepage, S.J. Brodsky, Phys. Rev. D **22**, 2157 (1980).
- G. Höhler, *Pion-Nukleon-Streuung: Methoden und Ergebnisse phänomenologischer Analysen*, Teil 2, edited by H. Schopper, Landolt-Börnstein, Vol. **9b2** (Springer Verlag, Berlin, 1983).
- R. Koch, E. Pietarinen, Nucl. Phys. A **336**, 331 (1980).
- C. Ditsche, M. Hoferichter, B. Kubis, U.-G. Meißner, JHEP **06**, 043 (2012) arXiv:1203.4758 [hep-ph].
- M. Hoferichter, C. Ditsche, B. Kubis, U.-G. Meißner, JHEP **06**, 063 (2012) arXiv:1204.6251 [hep-ph].
- M. Hoferichter, J. Ruiz de Elvira, B. Kubis, U.-G. Meißner, Phys. Rev. Lett. **115**, 092301 (2015) arXiv:1506.04142 [hep-ph].
- M. Hoferichter, J. Ruiz de Elvira, B. Kubis, U.-G. Meißner, Phys. Rev. Lett. **115**, 192301 (2015) arXiv:1507.07552 [nucl-th].
- M. Hoferichter, J. Ruiz de Elvira, B. Kubis, U.-G. Meißner, Phys. Rep. **625**, 1 (2016) arXiv:1510.06039 [hep-ph].
- M. Hoferichter, J. Ruiz de Elvira, B. Kubis, U.-G. Meißner, Phys. Lett. B **760**, 74 (2016) arXiv:1602.07688 [hep-lat].
- D. Siemens, J. Ruiz de Elvira, E. Epelbaum, M. Hoferichter, H. Krebs, B. Kubis, U.-G. Meißner, *Reconciling threshold and subthreshold expansions for pion-nucleon scattering*, arXiv:1610.08978 [nucl-th].
- BaBar Collaboration (B. Aubert *et al.*), Phys. Rev. Lett. **103**, 231801 (2009) arXiv:0908.3589 [hep-ex].
- KLOE Collaboration (D. Babusci *et al.*), Phys. Lett. B **720**, 336 (2013) arXiv:1212.4524 [hep-ex].
- BESIII Collaboration (M. Ablikim *et al.*), Phys. Lett. B **753**, 629 (2016) arXiv:1507.08188 [hep-ex].

50. T. Strauch *et al.*, Eur. Phys. J. A **47**, 88 (2011) arXiv:1011.2415 [nucl-ex].
51. M. Hennebach *et al.*, Eur. Phys. J. A **50**, 190 (2014) arXiv:1406.6525 [nucl-ex].
52. D. Gotta *et al.*, Lect. Notes Phys. **745**, 165 (2008).
53. V. Baru *et al.*, Phys. Lett. B **694**, 473 (2011) arXiv:1003.4444 [nucl-th].
54. V. Baru *et al.*, Nucl. Phys. A **872**, 69 (2011) arXiv:1107.5509 [nucl-th].
55. P. deNiverville, C.Y. Chen, M. Pospelov, A. Ritz, arXiv:1609.01770 [hep-ph].
56. G.A. Miller, M. Strikman, C. Weiss, Phys. Rev. C **84**, 045205 (2011) arXiv:1105.6364 [hep-ph].
57. Particle Data Group Collaboration (K.A. Olive *et al.*), Chin. Phys. C **38**, 090001 (2014).
58. W.R. Frazer, J.R. Fulco, Phys. Rev. **117**, 1603 (1960).
59. R. Navarro Pérez, J.E. Amaro, E. Ruiz Arriola, arXiv:1606.00592 [nucl-th].
60. K.M. Watson, Phys. Rev. **95**, 228 (1954).
61. R. Omnès, Nuovo Cimento **8**, 316 (1958).
62. I. Caprini, G. Colangelo, H. Leutwyler, Eur. Phys. J. C **72**, 1860 (2012) arXiv:1111.7160 [hep-ph].
63. G. Colangelo, J. Gasser, H. Leutwyler, Nucl. Phys. B **603**, 125 (2001) arXiv:hep-ph/0103088.
64. R. García-Martín, R. Kamiński, J.R. Peláez, J. Ruiz de Elvira, F.J. Ynduráin, Phys. Rev. D **83**, 074004 (2011) arXiv:1102.2183 [hep-ph].
65. S.P. Schneider, B. Kubis, F. Niecknig, Phys. Rev. D **86**, 054013 (2012) arXiv:1206.3098 [hep-ph].
66. S. Eidelman, L. Lukaszuk, Phys. Lett. B **582**, 27 (2004) arXiv:hep-ph/0311366.
67. C. Hanhart, Phys. Lett. B **715**, 170 (2012) arXiv:1203.6839 [hep-ph].
68. Belle Collaboration (M. Fujikawa *et al.*), Phys. Rev. D **78**, 072006 (2008) arXiv:0805.3773 [hep-ex].
69. N.I. Muskhelishvili, *Singular Integral Equations* (Wolters-Noordhoff Publishing, Groningen, 1953; 2nd edition, Dover Publications, 2008).
70. B. Kubis, R. Lewis, Phys. Rev. C **74**, 015204 (2006) arXiv:nucl-th/0605006.
71. M. Wagman, G.A. Miller, Phys. Rev. C **89**, 065206 (2014) **91**, 019903(E) (2015) arXiv:1402.7169 [nucl-th].
72. J. Gasser, M.A. Ivanov, E. Lipartia, M. Mojžiš, A. Rusetsky, Eur. Phys. J. C **26**, 13 (2002) arXiv:hep-ph/0206068.
73. M. Hoferichter, B. Kubis, U.-G. Meißner, Phys. Lett. B **678**, 65 (2009) arXiv:0903.3890 [hep-ph].
74. M. Hoferichter, B. Kubis, U.-G. Meißner, Nucl. Phys. A **833**, 18 (2010) arXiv:0909.4390 [hep-ph].
75. G. Ecker, Mojžiš, Phys. Lett. B **365**, 312 (1996) arXiv:hep-ph/9508204.
76. N. Fettes, U.-G. Meißner, S. Steininger, Nucl. Phys. A **640**, 199 (1998) arXiv:hep-ph/9803266.
77. L. Koester *et al.*, Phys. Rev. C **51**, 3363 (1995).
78. S. Kopecky *et al.*, Phys. Rev. C **56**, 2229 (1997).