

SCIENTIFIC REPORTS



OPEN

DNA methylation landscape of ocular tissue relative to matched peripheral blood

Received: 20 September 2016

Accepted: 22 February 2017

Published: 13 April 2017

Alex W Hewitt^{1,2,3,*}, Vania Januar^{4,*}, Alexandra Sexton-Oates⁴, Jihoon E Joo⁵, Maria Franchina¹, Jie Jin Wang⁶, Helena Liang², Jamie E Craig⁷ & Richard Saffery^{4,8}

Epigenetic variation is implicated in a range of non-communicable diseases, including those of the eye. However, investigating the role of epigenetic variation in central tissues, such as eye or brain, remains problematic and peripheral tissues are often used as surrogates. In this study, matched human blood and eye tissue ($n = 8$) were obtained post-mortem and DNA methylation profiling performed on blood, neurosensory retina, retinal pigment epithelium (RPE)/choroid and optic nerve tissue using the Illumina Infinium HumanMethylation450 platform. Unsupervised clustering and principal components analysis revealed tissue of origin as the main driver of methylation variation. Despite this, there was a strong correlation of methylation profiles between tissues with $>255,000$ CpG sites found to have similar methylation levels. An additional $\sim 16,000$ show similarity across ocular tissues only. A small proportion of probes showing inter-individual variation in blood co-varied with eye tissues within individuals, however much of this variation may be genetically driven. An improved understanding of the epigenetic landscape of the eye will have important implications for understanding eye disease. Despite a generally high correlation irrespective of origin, tissue type is the major driver of methylation variation, with only limited covariation between blood and any specific ocular tissue.

The eye is the most specialised sensory organ in the human body. Light enters through the cornea and after passing through the pupil is finely focussed by the crystalline lens onto the neurosensory retina. Initiation of the phototransduction cascade converts the photonic energy into a neural signal, and following a high degree of pre-retinal processing, this signal is transferred via retinal ganglion cells to the brain¹. Retinal ganglion cells exit the eye through the optic nerve to synapse in the mid-brain¹. Stray light is absorbed by the retinal pigmented epithelium (RPE), which also serves a fundamental role in vitamin A cycling². The high metabolic demand of phototransduction is ameliorated by the cavernous choroidal tissue which is located posterior to the RPE and receives the highest blood flow per tissue volume in the body².

Dysfunction of almost any cellular component of the eye can lead to significant visual morbidity. Many ophthalmic diseases are known to have both heritable and environmental pathoetiological factors³, and a greater understanding of the molecular mechanisms of ophthalmic disease have revolutionised therapy^{4,5}. Although much insight into the genetic causes of ocular disease have been gained through well powered genome-wide association and linkage studies⁶, the precise means by which genetic variants and environmental stressors interact remain poorly understood. Such dynamic gene-environment interactions, many of which have downstream cellular consequences, are potentially mediated by epigenetic variation established during development⁷, and understanding the epigenetic factors involved in ophthalmic disease may facilitate the development of novel disease screening and therapeutic avenues. Limited studies have suggested a role for epigenetic variation in diseases of the

¹Lions Eye Institute, University of Western Australia, Centre for Ophthalmology and Visual Science, Perth, Australia.

²Centre for Eye Research Australia, University of Melbourne, Royal Victorian Eye and Ear Hospital, Melbourne, Australia. ³Menzies Research Institute Tasmania, School of Medicine, University of Tasmania, Hobart, Australia.

⁴Cancer and Disease Epigenetics, Murdoch Childrens Research Institute, Royal Children's Hospital, Australia.

⁵Department of Pathology, University of Melbourne, Australia. ⁶Centre for Vision Research, Department of Ophthalmology and Westmead Millennium Institute, University of Sydney, Westmead, Australia. ⁷Department of Ophthalmology, Flinders University, Flinders Medical Centre, Adelaide, South Australia, Australia. ⁸Department of Paediatrics, University of Melbourne, Australia.

*These authors contributed equally to this work. Correspondence and requests for materials should be addressed to R.S. (email: richard.saffery@mcri.edu.au)

eye, but these have generally been undertaken in non-ocular tissues and as such, the relevance to the pathology of interest remains unclear^{8–10}.

Epigenetic variation has emerged as a major mediator of gene:environment interactions thought to underpin much of human disease. However, unlike genetic variation, epigenetic processes are dynamic both temporally and spatially, with each specific tissue type displaying a unique epigenetic profile. DNA methylation is by far the most widely studied epigenetic process due to its ease of measurement and high degree of stability in biological specimens, and many studies have begun to explore the link between DNA methylation variation and a range of exposures and disease outcomes. Although the field of epigenetic-epidemiology remains in its infancy, some compelling findings have emerged, particularly in relation to the effects of tobacco smoking exposure on DNA methylation profile in blood and buccal cells. A clearer understanding of the methylation landscape of tissues relevant to specific conditions is required in order to gain insights into the relevance of measuring epigenetic profile in a proxy tissue such as blood or saliva¹¹. Such knowledge gaps are common when dealing with living individuals and have only been directly assessed in limited postmortem studies. In neurological conditions this has been done by directly comparing matched blood and brain tissue^{12–14}, but has yet to be investigated in matched blood and eye tissue.

The principal aim of this study was to investigate the methylation profiles of specific ocular tissues, and compare this profile to matched peripheral blood. The overriding hypothesis was that there would be both tissue and individual specific methylation signatures, and that a blood DNA methylation profile could be identified for potential use as a proxy for the direct study of eye tissue, generally not possible in living humans. Herein, we determine the relative importance of ocular tissue methylation specificity at the genome-wide level, and quantify the number of sites that co-vary within an individual across neurosensory retinal, RPE/choroidal and optic nerve tissue.

Methods

Sample collection and processing. Whole blood from the subclavian vein and whole eyes were obtained post-mortem. The donors had no known ophthalmic disease. Donors previously diagnosed with disseminated cancer were excluded. Specimens from eight people were available. These donors were all male and the mean age at death was 60.6 (SD: 11.3; range 37–76) years (Supplementary Table 1).

Blood samples were collected in tubes containing EDTA. All ocular tissue was collected and stored within twelve hours post-mortem. A circumferential pars plana incision was made and the vitreous body discarded. The neurosensory retina was removed and the RPE and choroid were dissected free from the scleral wall. Dura matter was stripped from the anterior segment of optic nerve before storage. Samples with inadequate specimens, such as short optic nerve stump or macroscopically indistinct dissections, were discarded. Dissected ocular tissue was stored in QIAGEN Allprotect Tissue Reagent (QIAGEN, Hilden, Germany) and DNA extraction was subsequently performed using the QIAGEN DNeasy Blood & Tissue Kit (QIAGEN). Following bisulfite conversion using the Methyl Easy bisulphite modification kit (Human Genetic Signatures, Sydney, NSW, Australia), samples were hybridized to Illumina Infinium HumanMethylation450 (Illumina Inc, San Diego, CA, USA) BeadChips (HM450K) according to the manufacturer's protocols. Array processing and Beadstudio analysis was conducted through the Australian Genome Research Facility (Melbourne, VIC, Australia).

This study was approved by the human research ethics committee of the University of Western Australia (RA/4/1/4805). Informed consent was obtained from next-of kin or powers of attorney. This study was conducted in accordance with the principles of the Declaration of Helsinki and its subsequent revisions.

Methylation data preprocessing. Quality control and background correction of the Beadstudio data was performed using the R programming software (version 3.2.1, <http://cran.r-project.org/>) *ChAMP* Bioconductor package, which utilises the *minfi* package^{15,16}. Normalisation was performed on all samples using the beta-mixture quantile normalisation method, a comparably robust normalisation method which adjusts the beta-value distribution of type II probes to resemble that of type I probes¹⁷. Probes that had a detection p-value greater than 0.01, probes that were cross-reactive, and probes that potentially contained SNPs of high minor allele frequency¹⁸, were removed from the dataset. As samples were all male, probes that hybridise to sex chromosomes were retained, leaving a total of 433,768 probes. Batch adjustment for samples was performed using the *sva* R package.

Data processing and statistical analysis. All statistical analysis was performed in R and the code for the analyses reported in this paper is available at <https://github.com/hewittlab/Ocular-Methylation-Landscape>. Unsupervised hierarchical clustering was first performed to investigate the relationships between samples. Methylation levels between individuals and tissues for all CpG sites were then compared using the Spearman correlation coefficient. The mean β values for each probe and tissue across individuals was calculated and CpG sites were categorized as either hypomethylated ($\beta \leq 0.2$), having an intermediate level of methylation ($0.2 < \beta < 0.8$), or hypermethylated ($\beta \geq 0.8$)¹⁹. The overlap of these categories between tissues were investigated using UpSet²⁰.

Correlation between tissues. Subsequent analysis utilized probes that were 'blood variable', defined as having > 5% methylation range within the inner 80th percentile of probes. The association of methylation levels between tissues within individuals was calculated for each CpG site using Spearman correlations. To establish the existence of an association in methylation levels between tissues, the correlation distribution was compared to a null correlation distribution, which was simulated by permuting samples and calculating correlations between unmatched pairs. Paired t-tests with matched samples were used to identify the most similarly methylated probes between tissues. A ranked list according to p-value was generated and an adjusted p-value of 0.05 was used as a cutoff.

Principal components analysis. To further investigate the structure of variation within the dataset, principal components analysis was performed on normalised M-values. Principal components were analysed for correlation with sample traits (tissue type, individual, age at death, cause of death, known co-morbidities, preservation time interval), using both linear regression and ANOVA. Probes that are associated with trait-related principal components contribute to the pattern of variation and likely vary across the trait.

As we were mainly interested in inter-individual differences across tissue type, probes that were highly associated with individual-associated principal components ($|r| > 0.5$) were selected for further analysis. Four principal components were found to vary between individuals only at a $p < 0.10$ level, accounting for 10.8% of the total variation. Hierarchical clustering was performed with probes related to these principal components, both combined and separately, and with and without the removal of tissue-specific probes. As there was little gene overlap between individual-specific and tissue-specific probes, the removal of tissue-specific probes had no significant effect on clustering. Only one principal component was significantly associated with inter-individual difference at $p < 0.05$. Probes that correlate with this principal component (PC13) were then compared with probes that co-vary between tissues. Individual specific probes were defined as those which co-vary across tissues within an individual and were identified by PCA. In contrast, tissue specific probes were defined as significantly different across tissues from different individuals and were identified using *Limma* Bioconductor package²¹.

Gene annotation and genomic enrichment. Probes were categorised into genomic features and CpG island features according to the annotation file provided for Illumina. Enrichment within each category was investigated for all probes, blood variable probes, blood variable probes that correlate with each eye tissue ($|r| > 0.5$, $p < 0.05$), and probes that correlate with individual-related principal components.

Gene ontology and Pathway analysis. Ingenuity Pathway Analysis (IPA) was used to investigate cellular pathways subject to DNA methylation variation. Gene ontology enrichment analysis was assessed using the PANTHER Overrepresentation Test (release 20160715) as part of the Gene Ontology Consortium (www.geneontology.org). HM450K probes located in a gene, or within 2 kb of the transcription start site showing differential methylation were assigned to the annotated gene. Genes on the HM450K array were used as the background list against which a target list were analysed. Gene with probes found to have variation exclusively associated with individuals at $p < 0.05$, were explored for previous association with eye disease. Gene previously implicated in eye disease were retrieved from the Retinal Information Network (<https://sph.uth.edu/Retnet/>; accessed 28/11/2016) and the NHGRI-EBI Catalog of published genome-wide association studies (<https://www.ebi.ac.uk/gwas/>; accessed 28/11/2016)^{22,23}.

Results

Sources of variation within the dataset. A total of 27709 and 8337 probes, which either contain SNPs or align to multiple locations respectively, were removed from the analysis²⁴. Following quality control and data normalization, DNA methylation values from a total of 433,768 probes were available for use in analysis. As anticipated, unsupervised hierarchical clustering revealed tissue type as the main driver of variation within the dataset, blood had the most distinct methylation profile, while RPE/choroid and optic nerve were the most similar (Fig. 1). Multidimensional Scaling plot visualisation of the 1,000 most variable probes highlighted the similarity of RPE/choroid and optic nerve methylation profiles relative to retina, with blood the most dissimilar in methylation profile (Supplementary Figure 1).

To further dissect the source(s) of methylation variation within the dataset, we performed principal component analysis. As expected, most of the variation within the dataset (55.84%) was due to tissue type, with the first four principal components (PCs) all associated with tissue of origin at $p < 0.05$ (Fig. 2). The only PC of variation that exclusively associated with individuals at $p < 0.05$ was PC13, comprising 802 probes that account for 1.87% of the variance within the dataset (Supplementary Table 2). Hierarchical clustering using probes associated with PC13 showed a clear separation of most individuals as predicted, despite very similar methylation levels across individuals overall (Supplementary Figure 2). Correlation analysis confirmed that PC13 was not related to any measured phenotype, such as age at death and cause of death (not shown).

In order to test the likely role of underlying genetics in the variation seen in PC13 probes, we carried out a limited literature search for evidence of any SNP-association, or mQTL for the probes a subset of PC13 probes. Of the 50 top probes tested in this manner, we were able to identify evidence for the potential influence of underlying genetic variation on methylation at 27^{25,26}. Thus, it is likely that much of inter individual variation seen in PC13 is likely attributable (at least in part) to underlying genetics rather than being environmentally driven in isolation.

Correlation of methylation values within and between tissues. Despite this discrete clustering, and reflecting the large number of CpG sites analysed, there was generally a strong correlation between methylation across all samples, with a median Spearman correlation of 0.914 (range: 0.819–0.987). Blood methylation profile had the strongest correlation with RPE/choroid (median $r = 0.913$, range: 0.892–0.939; not shown), followed by optic nerve (median, range) (not shown) and retinal tissue (median $r = 0.850$, range: 0.819–0.871; not shown).

Methylation β -values were bimodally distributed, with the majority of sites being commonly hypomethylated ($\beta \leq 0.2$) or hypermethylated ($\beta \geq 0.8$) across all tissues (Supplementary Figure 3). In order to explore this further, we divided probes into three categories of hypo ($\beta \leq 0.2$), intermediate ($0.2 < \beta < 0.8$) and hypermethylated ($\beta \geq 0.8$) and then assessed the degree of overlap in each class of probe across all tissues tested. This approach confirmed that the majority of methylation is relatively consistent across all tissues, though considerable evidence of tissue-of-origin methylation levels is also present within all 3 broad methylation classes (Fig. 3). Interestingly, each of the ocular tissues examined also shared a uniquely overlapping set of methylation levels with blood rather than other eye tissues (Fig. 3).

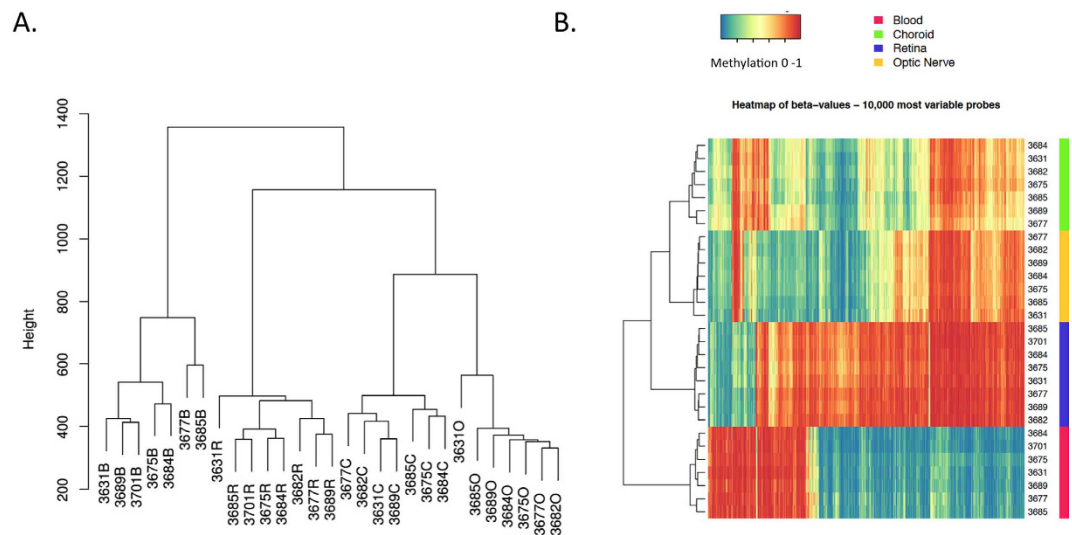


Figure 1. Sample relationships based on methylation at 433,768 HM450K probes shows tissue of origin as the main driver of variability within the dataset. (A) Hierarchical clustergram across all samples. Individuals are represented by their corresponding code followed by B (blood), C (RPE/choroid), R (retina), or O (optic nerve) to identify tissue type. (B) Heatmap of the 10,000 most variable HM450K probes. Probes are plotted on the x-axis, and individual tissue samples are plotted on the y-axis. Completely unmethylated (0 or 0% methylation) probes are represented as blue, and completely methylated (1 or 100% methylated) probes are represented as red.

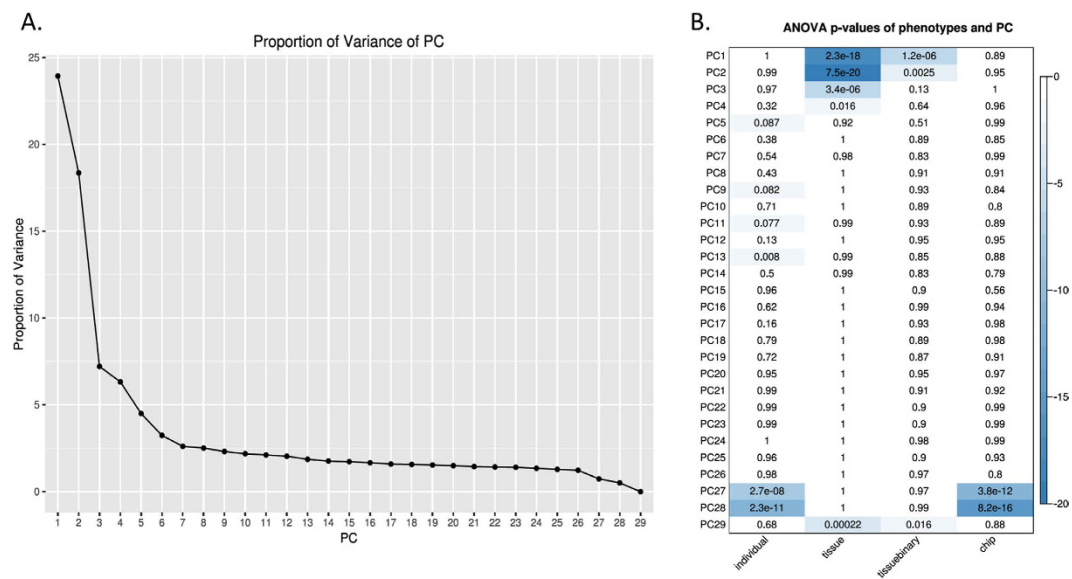


Figure 2. ANOVA analysis of principal components (PC) with sample traits. (A) Scree plot showing the proportion of total variation in the dataset captured by each of the first 29 PC. (B) Significance of association between each PC and individual, tissue of origin, eye vs non-eye (tissuebinary), and array chip. The first 4 PCs show a significant association with tissue of origin as anticipated, whereas PC13 captures the majority of inter-individual variation.

We were primarily interested in identifying CpG sites where inter-individual variation in blood was also associated with inter-individual differences in eye methylation. Such probes may represent reliable proxy measures for variation in ocular methylation, measurable in peripheral blood. To investigate this, pairwise correlation analysis was performed for each probe within a subset identified as variable in blood across individuals, defined as those for which the inter-individual methylation difference between the 10th and 90th percentiles was >5% (224,417 probes in total). The distribution of correlations between matched samples was compared with a randomly permuted distribution (i.e. null) to establish the degree of relatedness between blood and eye methylation levels. Significant differences were found between the true and null distributions (Wilcoxon rank test $p < 2.2 \times 10^{-16}$ for all tissues (not shown)). Interestingly, most of the probes that were correlated or anti-correlated (Spearman $r > 0.5$,

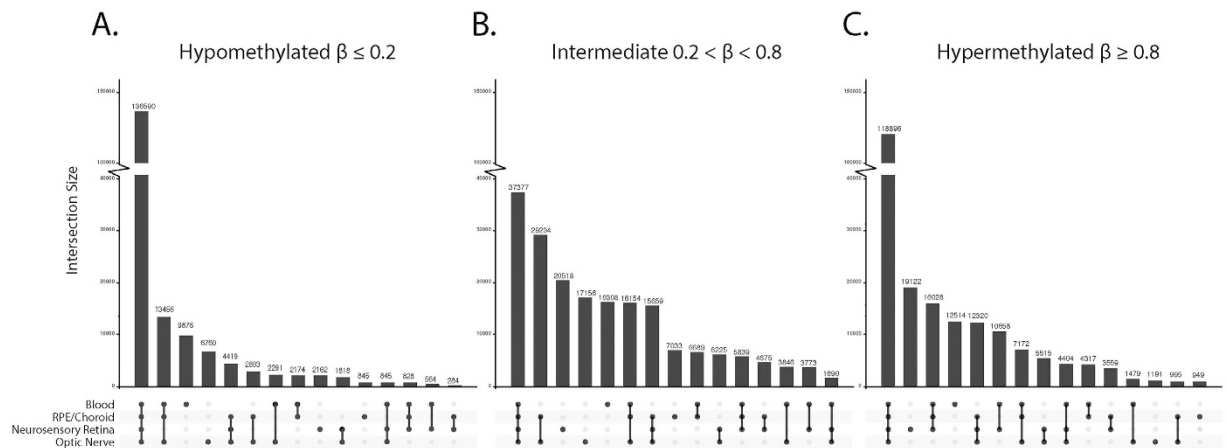


Figure 3. Overlap between tissues of probes designated hypomethylated ($<20\%$; **A**), intermediate ($20\text{--}80\%$; **B**) and hypermethylated ($>80\%$; **C**). Whereas the majority of probes showing conserved methylation across tissues are either hyper- or hypomethylated, tissue specific methylation is more likely to be at intermediate levels.

$p < 0.05$) between blood and eye tissues within an individual were unique for each pairwise tissue comparison, with only 122 probes commonly correlated with blood across all three eye tissues. Hierarchical clustering using these commonly variable probes revealed that retina and blood samples still cluster primarily by tissue, whereas RPE/choroid and optic nerve samples cluster by individual as opposed to tissue type (Supplementary Figure 4). Thus, these probes in isolation are of limited utility in inferring general ocular methylation status from blood.

Genomic context of variable probes. Compared to the overall distribution of probes, those showing inter-individual variation in blood were enriched for intergenic regions and CpG ‘open seas’ (Fig. 4). The genomic distribution of PC13-related probes appeared to be closer to the overall distribution, rather than blood-variable probes, being enriched at sites within 200 bp of transcription start sites, and also in CpG islands. This suggests that probes that vary between individuals do not necessarily co-vary between tissues types within an individual. Of 802 probes associated with PC13, 281 showed variable methylation in blood of different individuals, and of those, 115 showed correlated methylation with one or more eye tissues within an individual.

Gene Pathway and ontology Analysis. The 802 probes associated with PC13 were linked to 541 genes and 25 of these have been previously implicated in eye disease (Supplementary Table 3). IPA analysis identified an overrepresentation of canonical pathways, ‘IL-1 Signaling’, ‘Molecular Mechanisms in Cancer’, ‘Protein Kinase A, Relaxin and α -Adrenergic signaling’. Gene Ontology analysis identified enrichment of cell cycle regulators, protein modifiers (particularly kinases) and genes involved in RNA metabolism. There was no enrichment for specific pathways in the genes associated with the 115 probe subset that showed a correlation with one or more eye tissue.

Discussion

Direct comparison of ocular tissue and peripheral blood samples from the same people revealed tissue of origin as the main driver of methylation variation. However, despite these distinct signatures, there was a strong correlation of methylation profiles between tissues, with $>255,000$ CpG sites found to have similar methylation levels and an additional $\sim 16,000$ sites found to show similarity across ocular tissues only. A small proportion of probes showing inter-individual variation in blood co-varied with eye tissues within individuals, however a large proportion of this variation appears may be genetically driven.

Much of the application of epigenome-wide association studies (EWAS) to human conditions in recent years has been predicated on the assumption that accessible tissues show evidence of epigenetic variation associated with an exposure of interest, or reflective of less accessible tissues directly implicated in specific phenotypes^{11,27}. Exceptions to this include the use of tissue biopsies from adults (e.g. adipose or muscle in metabolic conditions), tissue removed during surgery for clinical purposes (e.g. heart surgery and cardiovascular disease) and the use of tissues obtained postmortem (particularly of CNS origin)²⁸. The latter are particularly important in allowing the delineation of the baseline epigenetic profile of tissues not accessible in living individuals and for comparing such a profile to more accessible tissues such as blood or saliva^{11,27}.

The potential for epigenetic variation to play a role in diseases of the eye has been suggested for several years, with various explorations in blood or saliva in individuals with conditions such as AMD^{8,9}. Recently, the potential for DNA methylation to play a role in AMD has been directly investigated through the genome-wide DNA methylation profiling of blood from AMD patients and controls. Small but replicable differences in DNA methylation were identified in the blood of neovascular AMD patients near the age-related maculopathy susceptibility 2 (*ARMS2*) gene, previously linked to AMD in genome-wide association studies¹⁰. Interestingly, an integrated analysis of blood and retina further identified consistent DNA methylation variation in the protease serine 50 (*PRSS50*) gene¹⁰.

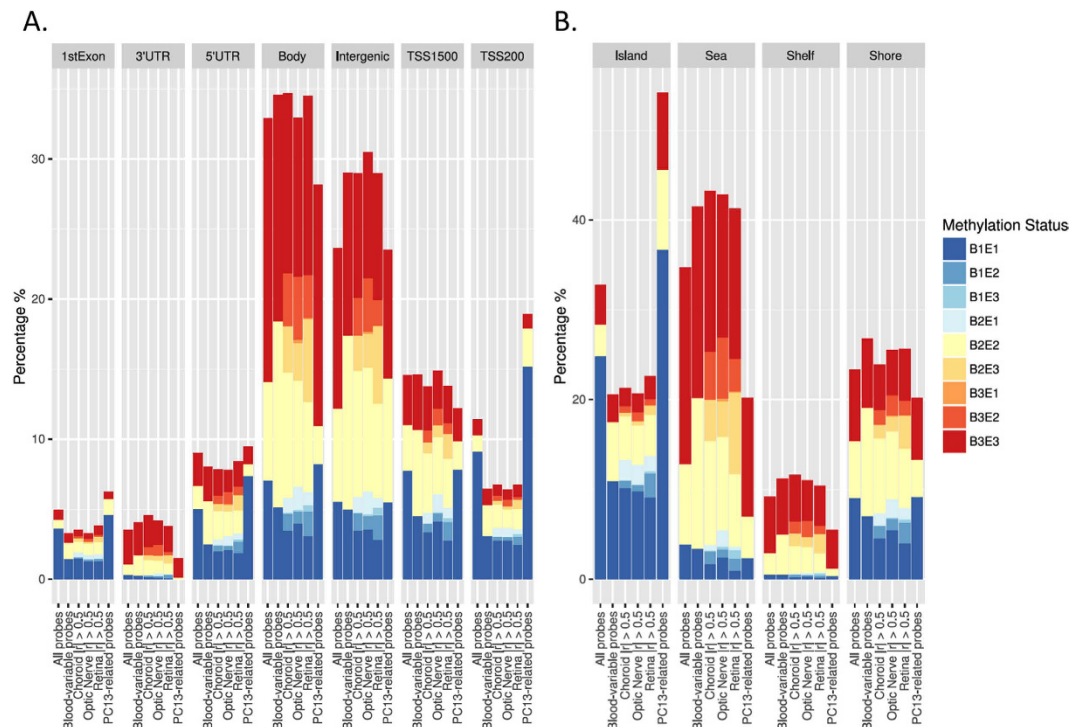


Figure 4. Distribution of mean methylation according to genomic feature (A) or CpG density relative to CpG islands (B). Classes B1, B2 and B3 correspond to hypomethylated, intermediate and hypermethylated probes in blood with E1, E2 and E3, the equivalent categories in eye tissue. Mean methylation was calculated as the average methylation level across each individual probe within a specific dataset used for the blood-eye comparison shown. The percentage of total probes is displayed. (A) The majority of probes are located in gene bodies or intergenic regions and show hyper- or intermediate methylation in both eye and blood. In contrast, a larger proportion of probes in the 5'UTR, 1st Exon or TSS regions are hypomethylated in both blood and eye tissues. (B) As anticipated, the majority of CpG island-associated probes are hypomethylated in blood and eye tissue, whereas CpG island Shores, Shelves and Open Sea are more highly methylated in both tissues. Data are shown for (i) all probes, (ii) probes showing inter-individual variation in blood, (iii–v) blood variable probes highly correlated with RPE/choroid, optic nerve or retina. and (vi) PC13-specific probes (all on the X-axis). The latter are primarily located within 200 bp of gene transcription start sites in CpG island regions.

Genetic variation at methylation quantitative trait loci (mQTLs) plays a major role in shaping the human DNA methylation profile, including the potential modulation of the effects of environmental exposures on methylation variation. Although some mQTLs are likely tissue specific in their influence on methylation, others are likely conserved across tissues with their effects measurable in tissues such as blood. Evidence in support of a combined effect of genetic and epigenetic variation has also been implicated in AMD with evidence of an association with underlying genotype of the risk SNP rs10490924 with disease-associated variation in *ARMS2* methylation¹⁰.

In many large epidemiological studies, whole blood is the only biological material that has been archived. The extent to which the DNA methylation patterns of easily accessible tissues like whole blood represent the epigenetic phenotype in inaccessible tissues is unclear, although recent studies are showing a certain degree of concordance. Epigenetic variation arising before disease could be inherited and thus be present in all adult tissues, or it could arise stochastically during the lifecourse and be limited to one, or a few tissues. Epigenetic variation can also be environmentally induced by life-style related factors, such as diet or smoking. In support of this, a panel of metastable epialleles has recently been described in humans that show inter-individual variation apparently independent of tissue of origin²⁹. Such loci have considerable potential to act as epigenetic 'sensors' of past environmental influence/exposure.

There are some caveats to the use of peripheral blood leukocytes to study DNA methylation profiles. Firstly, like neurosensory retinal and RPE/choroidal tissue, peripheral blood comprises a heterogeneous cell population. Therefore, any observed variation in DNA methylation assessed in whole blood may reflect small changes in the proportions of differentially methylated cell types that may in turn vary between individuals³⁰. A further limitation involves the issue of timing. It is now apparent that the DNA methylation of whole blood is altered with ageing and therefore samples taken from the same individual might be different if taken a few years apart. Equivalent data are generally not available for more central tissues of CNS or ocular origin. This has considerable potential to confound interpretation of EWAS studies.

It is also noteworthy that our methylation profiling based on the HM450K beadchip evaluates only a biased subset of potential methylation sites, and that a similar study performed with other technology such as whole

genome bisulfite sequencing may identify a greater level of correlation between blood and ocular tissue³¹. Further, although probes known to contain SNPs or which align to multiple locations were removed¹⁶, it is certainly possible that rare or uncommon genetic variants could contribute to individual variation we identified. Finally, the lack of detailed recent ophthalmic clinical details may have further confounded our findings.

In summary, we defined the DNA methylation profile of three ocular tissues and compared these directly to matched peripheral whole blood from the same individuals. Despite a largely concordant methylation profile, only limited instances of correlated variation between tissues within specific individuals were observed. Collectively, our data support recent findings in similar analyses of the brain that suggested EWAS approaches using whole blood for disorders of the brain are likely to be of only limited utility for discovery type approaches aimed at unraveling disease aetiology¹². Nevertheless, as with our findings in the eye, there are a proportion of sites where inter-individual variation is correlated between whole blood and brain, highlighting the utility (albeit limited with the current platform) of using a blood-based EWAS to identify potential biomarkers of disease of more central tissues such as the brain and the eye.

References

- Sandoval, J. *et al.* Validation of a DNA methylation microarray for 450,000 CpG sites in the human genome. *Epigenetics* **6**, 692–702, doi: 16196 (2011).
- Lamb, T. D. & Pugh, E. N. Jr. Dark adaptation and the retinoid cycle of vision. *Prog Retin Eye Res* **23**, 307–380, doi: 10.1016/j.preteyeres.2004.03.001 S1350946204000151 (2004).
- Sanfilippo, P. G., Hewitt, A. W., Hammond, C. J. & Mackey, D. A. The heritability of ocular traits. *Surv Ophthalmol* **55**, 561–583, doi: S0039-6257(10)00144-X 10.1016/j.survophthal.2010.07.003 (2010).
- Stone, E. M. A very effective treatment for neovascular macular degeneration. *N Engl J Med* **355**, 1493–1495, doi: 355/14/1493 10.1056/NEJMe068191 (2006).
- Lipinski, D. M., Thake, M. & Maclaren, R. E. Clinical applications of retinal gene therapy. *Prog Retin Eye Res*, doi: S1350-9462(12)00060-2 10.1016/j.preteyeres.2012.09.001 (2012).
- Sheffield, V. C. & Stone, E. M. Genomics and the eye. *N Engl J Med* **364**, 1932–1942, doi: 10.1056/NEJMra1012354 (2011).
- Leenen, F. A., Muller, C. P. & Turner, J. D. DNA methylation: conducting the orchestra from exposure to phenotype? *Clin Epigenetics* **8**, 92, doi: 10.1186/s13148-016-0256-8 (2016).
- Wei, L. *et al.* Hypomethylation of the IL17RC promoter associates with age-related macular degeneration. *Cell reports* **2**, 1151–1158, doi: 10.1016/j.celrep.2012.10.013 (2012).
- Oliver, V. F. *et al.* Hypomethylation of the IL17RC promoter in peripheral blood leukocytes is not a hallmark of age-related macular degeneration. *Cell reports* **5**, 1527–1535, doi: 10.1016/j.celrep.2013.11.042 (2013).
- Oliver, V. F. *et al.* Differential DNA methylation identified in the blood and retina of AMD patients. *Epigenetics* **10**, 698–707, doi: 10.1080/15592294.2015.1060388 (2015).
- Foley, D. L. *et al.* Prospects for epigenetic epidemiology. *Am J Epidemiol* **169**, 389–400, doi: kwn380 10.1093/aje/kwn380 (2009).
- Hannon, E., Lunnon, K., Schalkwyk, L. & Mill, J. Interindividual methylomic variation across blood, cortex, and cerebellum: implications for epigenetic studies of neurological and neuropsychiatric phenotypes. *Epigenetics* **10**, 1024–1032, doi: 10.1080/15592294.2015.1100786 (2015).
- Davies, M. N. *et al.* Functional annotation of the human brain methylome identifies tissue-specific epigenetic variation across brain and blood. *Genome Biol* **13**, R43, doi: 10.1186/gb-2012-13-6-r43 (2012).
- Farre, P. *et al.* Concordant and discordant DNA methylation signatures of aging in human blood and brain. *Epigenetics Chromatin* **8**, 19, doi: 10.1186/s13072-015-0011-y (2015).
- Aryee, M. J. *et al.* Minfi: a flexible and comprehensive Bioconductor package for the analysis of Infinium DNA methylation microarrays. *Bioinformatics* **30**, 1363–1369, doi: 10.1093/bioinformatics/btu049 (2014).
- Morris, T. J. *et al.* ChAMP: 450k Chip Analysis Methylation Pipeline. *Bioinformatics* **30**, 428–430, doi: 10.1093/bioinformatics/btt684 (2014).
- Teschendorff, A. E. *et al.* A beta-mixture quantile normalization method for correcting probe design bias in Illumina Infinium 450 k DNA methylation data. *Bioinformatics* **29**, 189–196, doi: 10.1093/bioinformatics/bts680 (2013).
- Chen, Y. A. *et al.* Discovery of cross-reactive probes and polymorphic CpGs in the Illumina Infinium HumanMethylation450 microarray. *Epigenetics* **8**, 203–209, doi: 10.4161/epi.23470 (2013).
- Du, P. *et al.* Comparison of Beta-value and M-value methods for quantifying methylation levels by microarray analysis. *BMC Bioinformatics* **11**, 587, doi: 10.1186/1471-2105-11-587 (2010).
- Lex, A., Gehlenborg, N., Strobel, H., Vuilleumot, R. & Pfister, H. UpSet: Visualization of Intersecting Sets. *IEEE Trans Vis Comput Graph* **20**, 1983–1992, doi: 10.1109/TVCG.2014.2346248 (2014).
- Smyth, G. K. Linear models and empirical bayes methods for assessing differential expression in microarray experiments. *Stat Appl Genet Mol Biol* **3**, Article 3, doi: 10.2202/1544-6115.1027 (2004).
- Welter, D. *et al.* The NHGRI GWAS Catalog, a curated resource of SNP-trait associations. *Nucleic Acids Res* **42**, D1001–1006, doi: 10.1093/nar/gkt1229 (2014).
- Daiger, S. P. *et al.* Targeted high-throughput DNA sequencing for gene discovery in retinitis pigmentosa. *Adv Exp Med Biol* **664**, 325–331, doi: 10.1007/978-1-4419-1399-9_37 (2010).
- Nordlund, J. *et al.* Genome-wide signatures of differential DNA methylation in pediatric acute lymphoblastic leukemia. *Genome Biol* **14**, r105, doi: 10.1186/gb-2013-14-9-r105 (2013).
- van Dongen, J. *et al.* Genetic and environmental influences interact with age and sex in shaping the human methylome. *Nat Commun* **7**, 11115, doi: 10.1038/ncomms11115 (2016).
- Chen, Z. *et al.* Epigenomic profiling reveals an association between persistence of DNA methylation and metabolic memory in the DCCT/EDIC type 1 diabetes cohort. *Proc Natl Acad Sci USA* **113**, E3002–3011, doi: 10.1073/pnas.1603712113 (2016).
- Birney, E., Smith, G. D. & Grealish, J. M. Epigenome-wide Association Studies and the Interpretation of Disease -Omics. *PLoS genetics* **12**, e1006105, doi: 10.1371/journal.pgen.1006105 (2016).
- Liang, L. & Cookson, W. O. Grasping nettles: cellular heterogeneity and other confounders in epigenome-wide association studies. *Human molecular genetics* **23**, R83–88, doi: 10.1093/hmg/ddu284 (2014).
- Silver, M. J. *et al.* Independent genomewide screens identify the tumor suppressor VTRNA2-1 as a human epiallele responsive to periconceptual environment. *Genome Biol* **16**, 118, doi: 10.1186/s13059-015-0660-y (2015).
- Yuferov, V. *et al.* Tissue-specific DNA methylation of the human prodynorphin gene in post-mortem brain tissues and PBMCs. *Pharmacogenet Genomics* **21**, 185–196, doi: 10.1097/FPC.0b013e32833e3ebc (2011).
- Roadmap Epigenomics, C. Integrative analysis of 111 reference human epigenomes. *Nature* **518**, 317–330, doi: 10.1038/nature14248 (2015).

Acknowledgements

We are grateful to Mrs Lisa Buckland and the staff of the Lions Eye Bank who facilitated sample collection. This work was supported by an Australian National Health and Medical Research Council (NHMRC) grant [APP1024619], the Ophthalmic Research Institute of Australia, the American Health Assistance Foundation and the Victorian Government's Operational Infrastructure Support Program. RS is supported by a NHMRC Senior Research Fellowship and AWH by a NHMRC Practitioner Fellowship.

Author Contributions

A.W.H., J.J.W., J.E.C. and R.S. designed this study. Sample collection and processing were performed by A.W.H. and M.F., whilst J.E.J. performed the bisulfite conversion. Data were analysed by A.W.H., V.J., J.E.J., H.L. and R.S. This manuscript was prepared by A.W.H., V.J., J.E.J., A.S.O. and R.S. and all authors reviewed and gave final approval.

Additional Information

Supplementary information accompanies this paper at <http://www.nature.com/srep>

Competing Interests: The authors declare no competing financial interests.

How to cite this article: Hewitt, A. W. *et al.* DNA methylation landscape of ocular tissue relative to matched peripheral blood. *Sci. Rep.* 7, 46330; doi: 10.1038/srep46330 (2017).

Publisher's note: Springer Nature remains neutral with regard to jurisdictional claims in published maps and institutional affiliations.



This work is licensed under a Creative Commons Attribution 4.0 International License. The images or other third party material in this article are included in the article's Creative Commons license, unless indicated otherwise in the credit line; if the material is not included under the Creative Commons license, users will need to obtain permission from the license holder to reproduce the material. To view a copy of this license, visit <http://creativecommons.org/licenses/by/4.0/>

© The Author(s) 2017