

SCIENTIFIC REPORTS



OPEN

Prognostic significance of neutrophil-to-lymphocyte ratio in prostate cancer: evidence from 16,266 patients

Received: 17 November 2015

Accepted: 05 February 2016

Published: 25 February 2016

Xiaobin Gu, Xianshu Gao, Xiaoying Li, Xin Qi, Mingwei Ma, Shangbin Qin, Hao Yu, Shaoqian Sun, Dong Zhou & Wen Wang

This study was aimed to investigate the prognostic value of neutrophil-to-lymphocyte ratio (NLR) in patients with prostate cancer (PCa). A meta-analysis including 14 publications (15 cohorts) with 16,266 patients was performed to evaluate the association between NLR and overall survival (OS), progression-free survival (PFS)/recurrence-free survival (RFS) in PCa using hazard ratio (HR) and 95% confidence intervals (95% CI). The combining data showed that increased NLR predict poor OS (HR = 1.38, 95% CI: 1.22–1.56) and PFS/RFS (HR = 1.24, 95% CI 1.05–1.46) in PCa. Stratified analysis by PCa type, sample size, ethnicity and NLR cut-off value revealed that NLR showed consistent prognostic value in metastatic castration-resistant prostate cancer (mCRPC) patients and predict poor PFS/RFS in Asians, but not in Caucasians. These statistical data suggested that increased NLR could predict poor prognosis in patients with PCa.

Prostate cancer (PCa) is the most frequently diagnosed cancer and the second leading cause of cancer-related death among men in the western world, accounting for 220,800 new cases and 27,540 deaths in the US annually¹. The incidence of prostate cancer varies remarkably in different countries and regions, which increased significantly during the past few decades due to diverse approaches diagnosing PCa. Despite different treatment methods including radical prostatectomy, hormone deprivation therapy, radiation therapy and chemotherapy were applied, most tumors relapse in 2 years to the castration-resistant state and the prognosis of PCa remains disappointing². Given this, it is of interest for clinicians to stratify the high risk PCa patients who are prone to tumor recurrence and poor prognosis so that clinicians could further identify optimal treatment strategies³.

Accumulating evidence has shown that inflammation response is closely associated with tumorigenesis and tumor progression^{4,5}. The interactions between tumor and inflammation were complex and involved different mechanisms. Inflammation plays an important role in every single step in carcinogenesis, involving tumor initiation, angiogenesis promotion, apoptosis inhibition and tumor metastasis⁶. The changes in systemic inflammatory response can be reflected by measurement of various blood-based parameters. A variety of blood-based indexes including C-reactive protein (CRP), modified Glasgow Prognostic Score (mGPS), platelets count and neutrophil-to-lymphocyte ratio (NLR) have been extensively explored to predict prognosis of cancer patients^{7–9}. A large amount of studies have reported that elevation of NLR was associated with poor clinical outcomes in various malignant tumors^{10,11}. In recent years, several studies have reported that an elevation in NLR correlated with biological tumor recurrence and poor prognosis in patients with PCa^{12–14}. However, some other studies did not detect the prognostic significance of NLR in PCa patients^{15,16}. Therefore, it is necessary to systematically clarify the prognostic significance of NLR in PCa by the approach of meta-analysis.

The current study was designed to evaluate the prognostic value of elevated NLR for overall survival (OS) and progress-free survival (PFS)/recurrence-free survival (RFS) in patients with PCa by pooling results from published data.

Department of Radiation Oncology, Peking University First Hospital, Beijing 100034, China. Correspondence and requests for materials should be addressed to X.G. (email: doctorgaoxs@126.com)

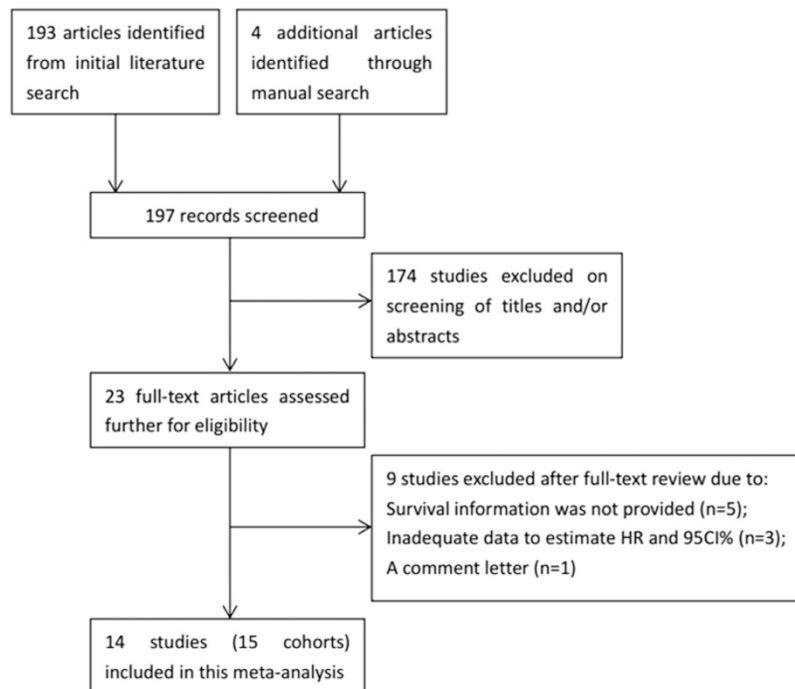


Figure 1. The flow chart of literature selection.

Study	Year	Country	Ethnicity	Sample size	PCa type	Treatment method	Cut-off value Of NLR	Survival analysis
Shafique ¹⁶	2012	UK	Caucasian	709	All PCa	NR	5	OS
Linton ¹⁵	2013	Australia	Caucasian	182	mCRPC	Chemotherapy	5	OS
Nuhn ¹²	2014	USA	Caucasian	247	mCRPC	Chemotherapy	3	OS
Sumbul ²⁵	2014	Turkey	Asian	33	mCRPC	Chemotherapy	3	PFS
Templeton ¹³	2014	Canada	Caucasian	357	mCRPC	Chemotherapy	3	OS
Bahig ²⁴	2015	Canada	Caucasian	950	Localized PCa	Radiotherapy	3	OS,PFS
Kwon ²³	2015	USA	Caucasian	217	Localized PCa	Prostatectomy	2.6	RFS
Langsenlehner ¹⁴	2015	Austria	Caucasian	415	Localized PCa	Radiotherapy	5	OS,PFS
Lee ²²	2015	Korea	Asian	1367	Localized PCa	Prostatectomy	2.5	RFS
Lorente ²¹	2015	UK	Caucasian	755	mCRPC	Chemotherapy	3	OS,PFS
Poyet ²⁰	2015	Switzerland	Caucasian	399	Localized PCa	Prostatectomy	2.67	RFS
Sharma ¹⁹	2015	USA	Caucasian	8350	Localized PCa	Prostatectomy	5	OS,PFS
Soest1 ¹⁷	2015	Netherland	Caucasian	1224	mCRPC	Chemotherapy	2	OS
Soest2 ¹⁷	2015	Netherland	Caucasian	1006	mCRPC	Chemotherapy	2.1	OS
Yao ¹⁸	2015	Japan	Asian	55	mCRPC	Chemotherapy	3.5	OS,PFS

Table 1. Characteristics of the included studies. NR: not reported; OS: overall survival; PFS: progression-free survival.

Results

Selection and characteristics of included eligible studies. The selection process was shown in Fig. 1. Through initial searching of the database, 197 records were retrieved and screened by title and abstract. 174 records were discarded after title and abstracts screening because they were duplicate records, reviews, irrelevant studies and nonhuman studies. 23 full-text records were further evaluated for eligibility. Of them, nine studies were eliminated due to following reasons: five did not provide the survival information, three provided insufficient data to calculate HR and 95%CI, one was a comment. Soest *et al.*¹⁷ included two independent randomized phase III trials in their paper, we marked the cohorts as Soest1 and Soest2. Finally, 14 publications^{12–25} (15 cohorts) with 16,266 patients published between 2012 and 2015 were included in the meta-analysis process. The basic information of the included studies was summarized in Table 1. 11 studies (12 cohorts)^{12–17,19–21,23,24} were from western countries, 3 studies^{18,22,25} were from Asian countries. Of the 14 studies (15 cohorts), 10 studies (11 cohorts)^{12–19,21,24} investigated the prognostic role of NLR on OS, 9 studies^{14,18–25} investigated prognostic role of NLR on PFS/RFS.

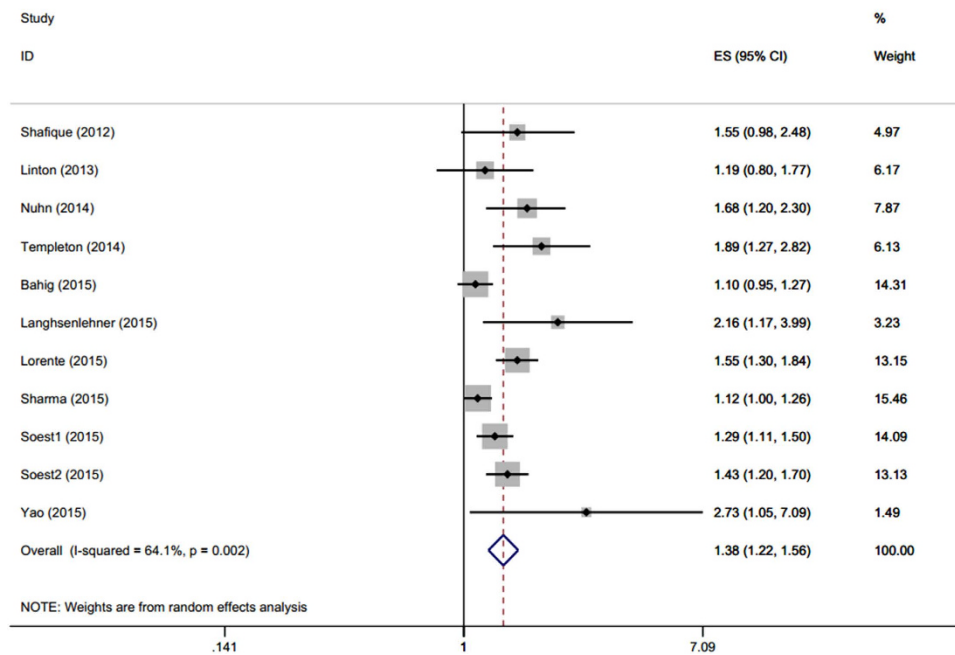


Figure 2. Meta-analysis of the association between elevated NLR and OS.

NLR and OS in PCa. 11 cohorts with 14,250 patients provided the data of NLR and OS in PCa. The pooled HR of 1.38 (95%CI: 1.22–1.56) with heterogeneity ($P_h = 0.002$, $I^2 = 64.1\%$) showed elevated NLR predicted shorter OS in patients with PCa (Fig. 2, Table 2).

NLR and PFS/RFS in PCa. 9 cohorts with 12541 patients presented the data of pretreatment NLR and PFS/RFS in PCa. Though with heterogeneity ($P_h = 0.003$, $I^2 = 65.3\%$), a significant correlation between increased NLR and poor PFS/RFS (HR = 1.24, 95%CI: 1.05–1.46) was detected according to our pooled data (Fig. 3, Table 2). Interestingly, increased NLR predicted shorter RFS/PFS in Asian populations (HR = 1.42, 95%CI: 1.11–1.82), but not in Caucasian populations (HR = 1.18, 95%CI: 0.98–1.43).

Subgroup analysis and meta-regression. Subgroup analysis and meta-regression were carried out to investigate the sources of heterogeneity. With respect to the correlation between NLR and OS, subgroup analysis stratified by PCa types showed that the combined HRs were 1.44 (95%CI: 1.32–1.57) for metastatic castration-resistant prostate cancer (mCRPC) and 1.16 (95%CI: 0.98–1.36) for localized PCa. Subgroup analysis dichotomized by sample size (>400 vs. <400) and NLR cut-off value (≤ 3 vs. > 3) did not change the results substantially (Table 2). Meta-regression showed PCa types could be the potential source of heterogeneity ($p = 0.01$). With regard to the correlation between NLR and PFS/RFS, subgroup analysis showed similar results with total results. Notably, the pooled HR for Asian ethnicity was 1.42 (95%CI: 1.11–1.82) without significant heterogeneity ($P_h = 0.345$, $I^2 = 6\%$). In addition, the pooled HR for mCRPC was 1.45 (95%CI: 1.19–1.77) with good homogeneity ($P_h = 0.37$, $I^2 = 0$) (Table 2).

Sensitivity analysis. Omitting any single study by turn, sensitivity analysis demonstrated that the combined HRs for OS and PFS/RFS did not significantly alter (Fig. 4).

Publication bias. Evaluation of publication bias using Begg's test ($p < 0.05$ was considered as statistical significant) demonstrated that there was no significant publication bias in OS and PFS/RFS studies ($p = 0.119$ and $p = 0.251$, respectively) (Fig. 5).

Discussion

In the present study, we aimed to explore the prognostic value of NLR in patients with PCa. A total of 14 studies (15 cohorts) containing 16,266 patients were included in this meta-analysis to calculate pooled HR. The results showed that increased pretreatment NLR was associated with poor OS (HR = 1.38, 95%CI: 1.22–1.56) and PFS/RFS (HR = 1.24, 95%CI: 1.05–1.46), though with heterogeneity. Subgroup analysis divided by ethnicity, PCa type, sample sizes and NLR cut-off value did not significantly change the main results. Of note, subgroup analysis demonstrated that pretreatment NLR had enhanced prognostic efficiency for OS and PFS/RFS in mCRPC (HR = 1.44, 95%CI: 1.32–1.57 for OS and HR = 1.45, 95%CI: 1.19–1.77 for RFS/PFS) without significant heterogeneity. In addition, elevated NLR also predicted poor PFS/RFS in Asian populations, but not in Caucasian population. To our knowledge, our study is the first meta-analysis exploring the prognostic effects of increased NLR in OS and PFS/RFS in patients with PCa.

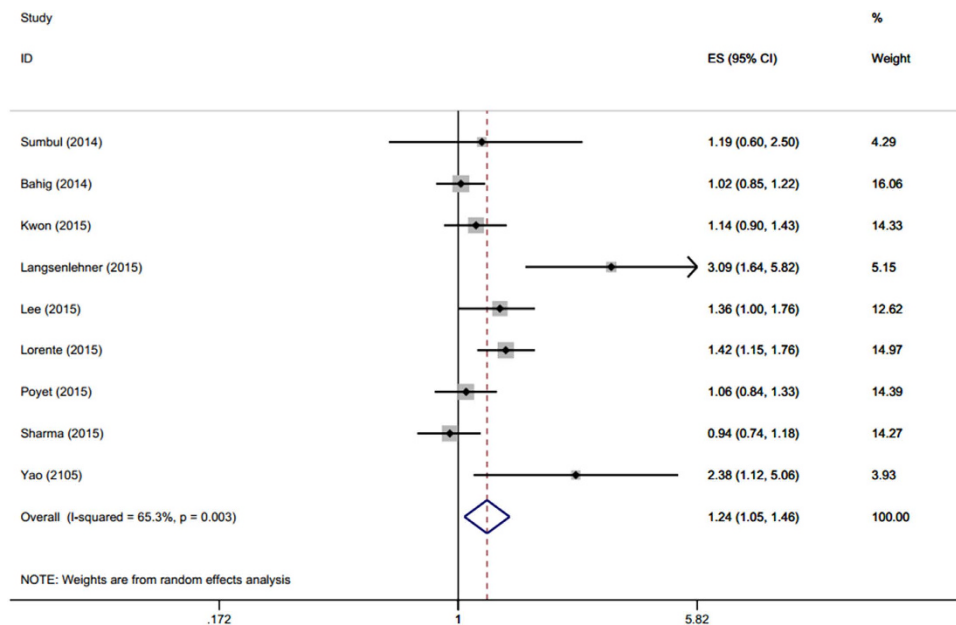


Figure 3. Meta-analysis of the association between elevated NLR and PFS/RFS.

Outcome	Variable	No. of studies	No. of patients	Model	HR (95%CI)	Heterogeneity		Meta-regression P value	
						Ph	I ² (%)		
OS	All	11	14250	R	1.38(1.22–1.56)	0.002	64.1	0.01	
	PCa type								
	mCRPC	7	3826	F	1.44(1.32–1.57)	0.238	25		
	Localized PCa	3	9715	R	1.16(0.98–1.36)	0.109	54.9		
	All PCa	1	709	—	1.55(0.97–2.47)	—	—		
	Sample size								0.19
	>400	7	13409	R	1.32(1.16–1.49)	0.005	67.8		
	<400	4	841	F	1.61(1.31–1.99)	0.252	26.6		
	NLR cut-off								0.756
	≤3	6	4539	R	1.34(1.24–1.45)	0.009	67.3		
>3	5	9711	R	1.18(1.06–1.31)	0.066	54.6			
PFS/RFS	All	9	12541	R	1.24(1.05–1.46)	0.003	65.3		
	Ethnicity								
	Asian	3	1455	F	1.42(1.11–1.82)	0.345	6		
	Caucasian	6	11086	R	1.18(0.98–1.43)	0.003	72.3		
	PCa type								
	mCRPC	3	843	F	1.45(1.19–1.77)	0.37	0		
	Localized PCa	6	11698	R	1.16(0.97–1.39)	0.01	66.6		
	Sample size								
	>400	5	11837	R	1.28(1.00–1.65)	0.001	78.8		
	<400	4	704	F	1.14(0.98–1.33)	0.255	26.1		
NLR cut-off									
≤3	6	3721	F	1.17(1.06–1.29)	0.203	30.9			
>3	3	8820	R	1.82(0.77–4.3)	0	87.3			

Table 2. Summary of the subgroup analysis results of NLR on OS and PFS/RFS. F: fixed-effects model; R: random-effects model.

Growing evidence has indicated that inflammatory response could be heavily involved in the occurrence and development of different cancer types^{26–28}. Studies revealed that inflammation-related neutrophils and immune-cytes including lymphocytes were indispensable participants in tumorigenesis²⁹. Inflammation exerts an important role in tumor formation and development through facilitating angiogenesis, proliferation and protecting tumors from apoptosis. By secreting a variety of chemokines, tumor cells could attract pro-inflammatory cells

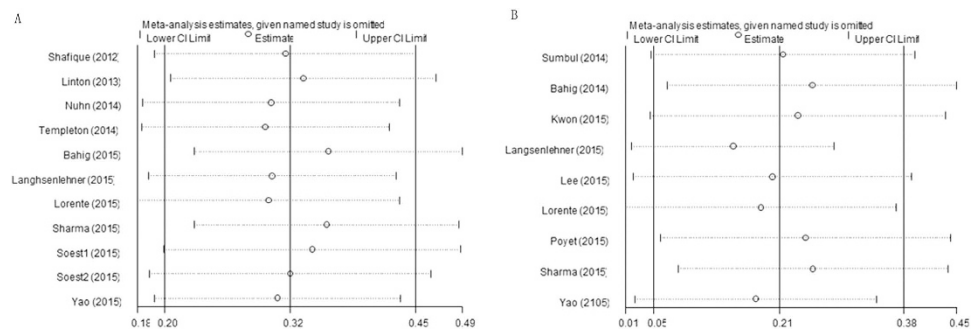


Figure 4. Sensitivity analysis on the relationship between NLR and (A) OS and (B) PFS/RFS in PCa.

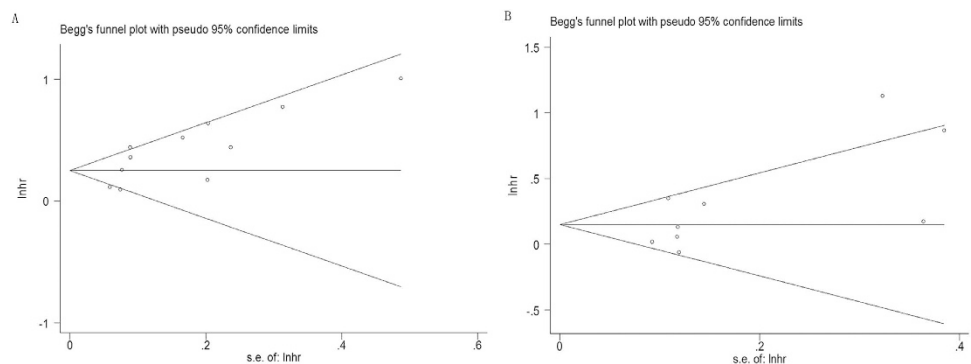


Figure 5. Begg's funnel plot of publication bias test for (A) OS and (B) PFS/RFS in PCa.

into tumor microenvironment, subsequently, an array of cytokines produced by neutrophils stimulate tumor cells growth³⁰. Of these inflammatory parameters reflecting the systemic inflammatory response, an increased neutrophil-to-lymphocyte ratio (NLR) has been found valuable to predict clinical outcome of cancer patients³¹. Additionally, NLR is obtained from routine blood test, making it an easily available and reliable marker. A large amount of studies have showed the correlation between increased pretreatment NLR and poor prognosis in different malignant tumors including gastric cancer, colorectal cancer, breast cancer, prostate cancer, soft-tissue sarcoma and non-small cell lung cancer^{17,27,32–35}.

Our results demonstrated that elevated NLR was associated with poor OS and PFS/RFS in patients with PCa, which was in accordance with the results from meta-analysis with other cancer types^{34,36,37}. We have noted that a recently published work investigated the prognostic value of NLR in various solid tumors¹¹. However, in that meta-analysis¹¹, only three studies concerning patients with castration resistant prostate cancer were included. In the present work, we included patients with both localized PCa and mCRPC in an adequately sufficient data. Moreover, subgroup analysis was performed, which could provide detailed information for clinical management. More importantly, we found that NLR has adequate prognostic value for OS and PFS/RFS in mCRPC. Although chemotherapy and hormone therapy were used, mCRPC commonly occurred after the treatment after few years. Therefore, the NLR measurement could provide valuable prognostic information for mCRPC and be helpful for optimal treatment strategies selection. In addition, our results showed increased NLR predicted poor PFS/RFS in Asians, but not in Caucasians, which could be attributed to the ethnicity heterogeneity. Notably, corticosteroids were one of the palliative treatment options in patients with mCRPC for 30 years³⁸. Intake of corticosteroids had immunosuppressive effects, which could influence the value of NLR²¹. The prognostic value of NLR in PCa should be evaluated after adjustment on potential confounders including use of corticosteroids. However, only one²¹ of the included studies provided the relevant data, thus the analysis could not be conducted in the current meta-analysis due to insufficient data. Interestingly, Lorente *et al.*²¹ found that NLR had independent prognostic value on OS regardless of corticosteroids usage using multivariable analysis. However, a recent work³⁹ found that, in patients with melanoma, elevated NLR and corticosteroids before week 1 were associated with poorer OS in univariate analysis, however, in multivariate analysis, elevated NLR remained an independent prognostic factor whereas the prognostic efficiency of intake of corticosteroids disappeared. Since corticosteroids were widely used drugs in mCRPC treatment, further studies should take into account intake of corticosteroids when performing survival analysis. Furthermore, more large scale studies are needed to explore the effects of use of corticosteroids on survival.

Although our study was the first meta-analysis concerning NLR in PCa prognostication, there were several limitations need to be addressed. First, vast majority of included publications employed samples of Caucasian ethnicity, thus the evaluation of OS and RFS/PFS in Asians might be derived by chance because of sample insufficiency. Second, Shafique *et al.*¹⁶ recruited all types of PCa patients that could not be classified as any PCa types,

which may contribute to heterogeneity when subgroup analysis and meta-regression were performed. Third, only publications in English were included, which could cause language bias for selection. Further investigations are needed to address the above-mentioned shortcomings.

In summary, our study demonstrated that elevated NLR predict poor OS and PFS/RFS in patients with PCa. Increased NLR showed consistent prognostic value in mCRPC patients and predict poor PFS/RFS in Asians, but not in Caucasians. The present findings could provide implications for clinical management of patients with PCa and further investigations involving large sample size and more ethnic backgrounds are needed.

Methods

Literature search. A comprehensive literature searching of Pubmed, Embase and Web of Science database was conducted. The search strategy included the combinations of the following key words: (NLR OR neutrophil-lymphocyte ratio OR neutrophil-to-lymphocyte ratio) AND (prostate cancer OR prostate carcinoma OR prostatic neoplasms OR PCa) AND (prognosis OR survival OR outcome OR recurrence). The last search was updated on October 17th, 2015. We also manually checked the reference list to identify additional publications. The published language was limited to English.

Inclusion and exclusion criteria. Inclusion criteria for publication selection were as follows: (i) the diagnosis of PCa for patients was histopathologically confirmed; (ii) the value of NLR was obtained for blood sample testing; (iii) investigated the association of NLR with PFS, RFS or OS; (iv) provided HRs and 95% CIs for NLR in OS and (or) PFS/RFS, or HRs and 95% CIs could be calculated according to the raw data provided in the article; (v) defined the cut-off value of increased NLR; (vi) published in English language.

Major exclusion criteria were as follows: (i) letters, editorials, review articles; (ii) failed to provide data of interest or insufficient data to estimate HRs and 95% CIs; (iii) failed to identify the cut-off value for elevated NLR; (iv) animal studies and irrelevant studies.

Data extraction. Two investigators (XB,G and XS,G) independently gathered information from each eligible study. The following data was extracted: surname of the first author, study country, year of publication, ethnic origin of the subjects, sample size, subtype of PCa, treatment method, cut-off value defining elevated NLR and HRs with corresponding 95% CIs for PFS/RFS and (or) OS. Discrepancies between the two investigators were settled by discussion.

Statistical analysis. The HR and the corresponding 95%CI were used to assess the prognostic efficiency of NLR on PCa. HR and 95% CI were directly extracted from each single study, if provided, or calculated according to the methods clarified by Tierney⁴⁰ *et al.* Cochran's Q test and Higgins I-squared statistic were applied to test the heterogeneity of pooled data. $I^2 > 50\%$ and $p < 0.1$ indicated significant heterogeneity and random-effects model was adopted to combine the effective value. $I^2 < 50\%$ and $p > 0.1$ were considered as no heterogeneity and a fixed-effects model was then adopted. Sources of inter-study heterogeneity were explored using subgroup analysis and meta-regression. Begg's funnel plot was used to evaluate publication bias. Sensitivity analyses were carried out to access the robustness of the results. All p values were two-tailed, and statistical significance level was set at $p < 0.05$. All statistical analyses were conducted using STATA 12.0 software (STATA Corporation, College Station, TX).

References

1. Siegel, R. L., Miller, K. D. & Jemal, A. Cancer Statistics, 2015. *CA-Cancer J. Clin.* **65**, 5–29 (2015).
2. Damber, J. E. & Aus, G. Prostate cancer. *Lancet.* **371**, 1710–1721 (2008).
3. Fung, C., Dale, W. & Mohile, S. G. Prostate Cancer in the Elderly Patient. *J. Clin. Oncol.* **32**, 2523–2530 (2014).
4. Gregory, A. D. & Houghton, A. M. Tumor-associated neutrophils: new targets for cancer therapy. *Cancer Res.* **71**, 2411–2416 (2011).
5. Hanahan, D. & Weinberg, R. A. Hallmarks of cancer: the next generation. *Cell.* **144**, 646–674 (2011).
6. Griivennikov, S. I., Greten, F. R. & Karin, M. Immunity, Inflammation, and Cancer. *Cell.* **140**, 883–899 (2010).
7. Hashimoto, K. *et al.* The impact of preoperative serum C-reactive protein on the prognosis of patients with hepatocellular carcinoma. *Cancer* **103**, 1856–1864 (2005).
8. Gu, L. *et al.* The association of platelet count with clinicopathological significance and prognosis in renal cell carcinoma: a systematic review and meta-analysis. *PLoS one* **10**, e0125538, doi: 10.1371/journal.pone.0125538 (2015).
9. Duan, H. *et al.* Prognostic role of neutrophil-lymphocyte ratio in operable esophageal squamous cell carcinoma. *World J Gastroenterol.* **21**, 5591–5597 (2015).
10. Cannon, N. A. *et al.* Neutrophil-Lymphocyte and Platelet-Lymphocyte Ratios as Prognostic Factors after Stereotactic Radiation Therapy for Early-Stage Non-Small-Cell Lung Cancer. *J. Thorac. Oncol.* **10**, 280–285 (2015).
11. Templeton, A. J. *et al.* Prognostic role of neutrophil-to-lymphocyte ratio in solid tumors: a systematic review and meta-analysis. *J Natl Cancer Inst.* **106**, dju124, doi: 10.1093/jnci/dju124 (2014).
12. Nuhn, P. *et al.* Association of pretreatment neutrophil-to-lymphocyte ratio (NLR) and overall survival (OS) in patients with metastatic castration-resistant prostate cancer (mCRPC) treated with first-line docetaxel. *BJU Int.* **114**, E11–E17 (2014).
13. Templeton, A. J. *et al.* Simple Prognostic Score for Metastatic Castration-Resistant Prostate Cancer With Incorporation of Neutrophil-to-Lymphocyte Ratio. *Cancer* **120**, 3346–3352 (2014).
14. Langsenlehner, T. *et al.* Validation of the neutrophil-to-lymphocyte ratio as a prognostic factor in a cohort of European prostate cancer patients. *World J Urol.* **33**, 1661–1667 (2015).
15. Linton, A. *et al.* Glasgow prognostic score as a prognostic factor in metastatic castration-resistant prostate cancer treated with docetaxel-based chemotherapy. *Clin Genitourin Cancer.* **11**, 423–430 (2013).
16. Shafique, K. *et al.* Systemic inflammation and survival of patients with prostate cancer: evidence from the Glasgow Inflammation Outcome Study. *Prostate Cancer Prostatic Dis.* **15**, 195–201 (2012).
17. van Soest, R. J. *et al.* Neutrophil-to-lymphocyte ratio as a prognostic biomarker for men with metastatic castration-resistant prostate cancer receiving first-line chemotherapy: data from two randomized phase III trials. *Ann Oncol.* **26**, 743–749 (2015).
18. Yao, A. *et al.* High neutrophil-to-lymphocyte ratio predicts poor clinical outcome in patients with castration-resistant prostate cancer treated with docetaxel chemotherapy. *Int J Urol.* **22**, 827–833 (2015).

19. Sharma, V. *et al.* The association of preoperative neutrophil to lymphocyte ratio with oncologic outcomes following radical prostatectomy for prostate cancer. *J Urol.* **193**, e55–e56 (2015).
20. Poyet, C. *et al.* Pretreatment systemic inflammatory response parameters do not predict the outcome in men with prostate cancer undergoing radical prostatectomy. *J Urol.* **193**, e817 (2015).
21. Lorente, D. *et al.* Baseline neutrophil-lymphocyte ratio (NLR) is associated with survival and response to treatment with second-line chemotherapy for advanced prostate cancer independent of baseline steroid use. *Ann Oncol.* **26**, 750–755 (2015).
22. Lee, H. *et al.* High preoperative neutrophil-lymphocyte ratio predicts biochemical recurrence in patients with localized prostate cancer after radical prostatectomy. *World J Urol.* doi: 10.1007/s00345-015-1701-6 (2015).
23. Kwon, Y. S. *et al.* Neutrophil and Lymphocyte Counts as Clinical Markers for Stratifying Low-Risk Prostate Cancer. *Clin Genitourin Cancer*, doi: 10.1016/j.clgc.2015.07.018 (2015).
24. Bahig, H. *et al.* Neutrophil count is associated with survival in localized prostate cancer. *BMC Cancer* **15**, 594, doi: 10.1186/s12885-015-1599-9 (2015).
25. Sumbul, A. T. *et al.* Neutrophil-to-lymphocyte ratio predicts PSA response, but not outcomes in patients with castration-resistant prostate cancer treated with docetaxel. *Int Urol Nephrol.* **46**, 1531–1535 (2014).
26. Proctor, M. J. *et al.* A derived neutrophil to lymphocyte ratio predicts survival in patients with cancer. *Br J Cancer* **107**, 695–699 (2012).
27. Cho, I. R. *et al.* Pre-treatment neutrophil to lymphocyte ratio as a prognostic marker to predict chemotherapeutic response and survival outcomes in metastatic advanced gastric cancer. *Gastric Cancer.* **17**, 703–710 (2014).
28. Xiao, W. K. *et al.* Prognostic significance of neutrophil-lymphocyte ratio in hepatocellular carcinoma: a meta-analysis. *BMC Cancer* **14**, 10, doi: 10.1186/1471-2407-14-117 (2014).
29. Coussens, L. M. & Werb, Z. Inflammation and cancer. *Nature* **420**, 860–867 (2002).
30. Koizumi, K., Hojo, S., Akashi, T., Yasumoto, K. & Saiki, I. Chemokine receptors in cancer metastasis and cancer cell-derived chemokines in host immune response. *Cancer Sci.* **98**, 1652–1658 (2007).
31. Roxburgh, C. S. & McMillan, D. C. Role of systemic inflammatory response in predicting survival in patients with primary operable cancer. *Future Oncol.* **6**, 149–163 (2010).
32. Koh, C. H. *et al.* Utility of pre-treatment neutrophil-lymphocyte ratio and platelet-lymphocyte ratio as prognostic factors in breast cancer. *Br. J. Cancer* **113**, 150–158 (2015).
33. Li, M. X. *et al.* Prognostic role of neutrophil- to- lymphocyte ratio in colorectal cancer: A systematic review and meta-analysis. *Int J Cancer.* **134**, 2403–2413 (2014).
34. Gu, X. B., Tian, T., Tian, X. J. & Zhang, X. J. Prognostic significance of neutrophil-to-lymphocyte ratio in non-small cell lung cancer: a meta-analysis. *Sci Rep.* **5**, 12493, doi: 10.1038/srep12493 (2015).
35. Szkandera, J. *et al.* Elevated preoperative neutrophil/lymphocyte ratio is associated with poor prognosis in soft-tissue sarcoma patients. *Br J Cancer.* **108**, 1677–1683 (2013).
36. Hu, K., Lou, L., Ye, J. & Zhang, S. Prognostic role of the neutrophil-lymphocyte ratio in renal cell carcinoma: a meta-analysis. *BMJ open* **5**, e006404, doi: 10.1136/bmjopen-2014-006404 (2015).
37. Wei, Y., Jiang, Y. Z. & Qian, W. H. Prognostic role of NLR in urinary cancers: a meta-analysis. *PloS one* **9**, e92079, doi: 10.1371/journal.pone.0092079 (2014).
38. Ndibe, C., Wang, C. G. & Sonpavde, G. Corticosteroids in the Management of Prostate Cancer: A Critical Review. *Curr Treat Options Oncol.* **16**, 6, doi: 10.1007/s11864-014-0320-6 (2015).
39. Zaragoza, J. *et al.* Neutrophil to lymphocyte ratio measured before starting ipilimumab treatment is associated with reduced overall survival in patients with melanoma. *Br J Dermatol.* doi: 10.1111/bjd.14155 (2015).
40. Tierney, J. F., Stewart, L. A., Ghersi, D., Burdett, S. & Sydes, M. R. Practical methods for incorporating summary time-to-event data into meta-analysis. *Trials* **8**, 16, doi: 10.1186/1745-6215-8-16 (2007).

Acknowledgements

This study was supported by Special fund for “Capital clinically characteristic applied research” of Beijing Municipal Science & Technology Commission (Grant No. Z141107002514160).

Author Contributions

X.B.G., X.S.G., M.W.M. and S.B.Q. defined the research theme. X.B.G., X.S.G., X.Y.L., X.Q. and H.Y. wrote and revised the main manuscript text; S.Q.S., D.Z. and W.W. prepared all the figures. All authors reviewed the manuscript.

Additional Information

Competing financial interests: The authors declare no competing financial interests.

How to cite this article: Gu, X. *et al.* Prognostic significance of neutrophil-to-lymphocyte ratio in prostate cancer: evidence from 16,266 patients. *Sci. Rep.* **6**, 22089; doi: 10.1038/srep22089 (2016).



This work is licensed under a Creative Commons Attribution 4.0 International License. The images or other third party material in this article are included in the article's Creative Commons license, unless indicated otherwise in the credit line; if the material is not included under the Creative Commons license, users will need to obtain permission from the license holder to reproduce the material. To view a copy of this license, visit <http://creativecommons.org/licenses/by/4.0/>