



OPEN

Robust behavioural effects in response to acute, but not repeated, terpene administration in Zebrafish (*Danio rerio*)

Joshua Szaszkiwicz¹, Shannon Leigh¹ & Trevor J. Hamilton^{1,2✉}

Terpenes are fragrant aromatic compounds produced by a variety of plants, most notably cannabis and hops. With increasing legalization of cannabis there is a need to better understand the behavioural effects of terpenes and ultimately their therapeutic value. Our study investigated the dose-dependent impact of three terpenes (limonene 0.25, 0.5, 0.75%; β -myrcene 0.001, 0.01, 0.1%; and 0.0001, 0.001, 0.00125% linalool) on zebrafish (*Danio rerio*) behaviour when exposed both acutely and repeatedly over a 7-day period. Anxiety-like behaviour, boldness, and locomotion were assessed using the open field test and the novel object approach test. In the acute dosing experiment, limonene and β -myrcene exposed groups demonstrated a significant decrease in locomotion, a decrease in anxiety-like behaviour, and an increase in boldness, while linalool treatment groups demonstrated only minor alterations in locomotion. Moreover, repeated exposure to limonene (0.39%) or β -myrcene (0.0083%) for a seven day period did not result in any significant behavioural effects. In conclusion, our study provides support for an anxiolytic and sedative effect in zebrafish in response to acute limonene and β -myrcene exposure that is no longer present after one week of repeated exposure.

For centuries, cannabis has been used medicinally for its analgesic, sedative, and anticonvulsive effects^{1,2}. Cannabis is now legal in some countries like Canada, and it is necessary to determine the actions of its phytochemical components, as well as their potential for therapeutic treatment. While a wealth of studies have demonstrated the potential health benefits of cannabinoid products like THC and CBD³⁻⁷, the therapeutic value of terpenes, which are also present in cannabis, have received significantly less attention⁸. Terpenes are a diverse group of phytochemicals that give plants their aroma and are a significant component in plant resin and essential oils. Over 200 terpenes have been identified in the cannabis plant which primarily consist of monoterpenoids, containing a 10-carbon backbone, and sesquiterpenoids which have a 15-carbon backbone^{9,10}.

Terpenes have been shown to possess a wide range of medicinal properties including anti-inflammatory, anxiolytic, antiviral, antifungal, antibacterial, and anti-cancer effects in human and murine models^{2,10-13} and therefore may play an integral role in producing therapeutic effects observed in medicinal cannabis. Scientific processes are used to develop standardized 'strains' of cannabis that contain specific proportions of cannabinoids and terpenes and accurately test for their levels¹². Previous research has found numerous pharmacological effects in a variety of terpenes^{2,10-14}, however, the study of behavioural effects of terpenes is only in its infancy. The monoterpenoids β -myrcene, limonene, and linalool are among the most common terpenes found in cannabis¹⁵, and were the focus of the current study.

β -Myrcene is an effective analgesic in murine studies. Lorenzetti et al. (1991) induced hyperalgesia in mice via injections of prostaglandin E2 and found that β -myrcene significantly reduced the intensity of the hyperalgesia, suggesting a strong analgesic effect¹⁶. Furthermore, in contrast to morphine, mice that were repeatedly dosed with β -myrcene over a period of five days did not develop any tolerance¹⁶. Similarly, Rao et al. (1990) induced hyperalgesia in mice using the hot plate method and found that preparations of β -myrcene significantly reduced nociception¹⁷. Treatment with naloxone prior to the hot plate test reversed the anti-nociceptive effect

¹Department of Psychology, MacEwan University, 6-366, 10700 – 104 Ave. NW, Edmonton, AB T5J 4S2, Canada. ²Neuroscience and Mental Health Institute, University of Alberta, Edmonton, AB T6G 2H7, Canada. ✉email: trevorjameshamilton@gmail.com

of β -myrcene, suggesting a potential opioid-related mechanism of action. Studies have also provided support for a sedative and anesthetic effect of β -myrcene^{18–20}. Mice dosed with β -myrcene demonstrated significantly increased muscle relaxation and lengthened barbiturate-induced sleeping time compared to controls¹⁸. Furthermore, β -myrcene was determined to be an effective anaesthetic agent in rainbow trout (*Oncorhynchus mykiss*)²⁰ and in common carp (*Cyprinus carpio*)¹⁹. β -Myrcene in cannabis may contribute to the heavy physical sedation felt by cannabis consumers which is referred to as “couch-lock”¹³.

Linalool is a monoterpene alcohol that is predominantly found in essential oil extracts of lavender, hops, and various cannabis strains. Linalool has demonstrated sedative, anxiolytic, and anti-inflammatory properties¹³, and therefore may possess therapeutic efficacy. Buchbauer et al. (1993) tested fragrant compounds and their essential oils on mice locomotion and found that inhalation of linalool decreased motility, suggesting a strong sedative effect²¹. Moreover, Souto-Maior et al. (2011) found that inhalation of linalool oxide at a variety of concentrations significantly decreased anxiety-like behaviour assessed in the elevated-plus maze and light/dark test²². The anxiolytic effect of linalool in mice was further supported by Linck et al. (2010) who observed decreased anxiety-like behaviour in the light/dark test in addition to decreased aggressive behaviour²³. Linalool has also demonstrated an anti-inflammatory effect, as mice given linalool prior to cigarette smoke exposure were protected against lung inflammation compared to mice who were exposed solely to cigarette smoke²⁴.

Limonene is the predominate terpene in citrus essential oil extracts and various cannabis strains such as “Girl Scout Cookie, Purple Kush, and Chocolope”^{2,25}. In murine studies, limonene has demonstrated consistent anxiolytic effects in multiple behavioural tests of anxiety-like behaviour such as the elevated plus maze, open field, and light/dark test^{26–28}. Moreover, limonene from orange extract was shown to significantly increase mouse motor activity, suggesting a potential impact of limonene on locomotion²¹. Limonene may also be an effective therapy for individuals with depression. Komori et al. (1995) treated 12 depressive patients with citrus fragrance exposure and observed a significant improvement in Hamilton Rating Scale for Depression (HRSD) scores, in addition to the normalization of neuroendocrine and immune system markers²⁹. Taken together, β -myrcene, linalool and limonene demonstrate significant behavioural changes in animal studies and therefore warrant further investigation.

Zebrafish have become an increasingly prevalent animal model demonstrate clear behavioural and endocrine responses amenable to pharmacological manipulation³⁰. As a result, numerous studies have used zebrafish to assess the effects of various drugs on anxiety-like behaviour in zebrafish such as ethanol^{31,32}, cocaine³³, nicotine^{34,35}, caffeine³⁶, and scopolamine³⁷. This study examined the impact of acute exposure to β -myrcene, linalool, and limonene at three different concentrations, on boldness, anxiety-like behaviour, and locomotion in zebrafish. Locomotion and anxiety-like behaviour were assessed by the open field test followed by the novel object approach test which quantified boldness behaviour. The open field and novel object approach test have been used extensively in behavioural neuroscience research and are well-validated measures of anxiety-like behaviour and boldness^{30,38,39}. Additionally, in order to examine the differences between short-term and long-term effects of the terpenes investigated, we exposed zebrafish to repeated terpene treatment for seven consecutive days and immediately afterward assessed their behaviour in the open field and novel object approach test.

Methods

Animals and housing. Zebrafish (*Danio rerio*, n = 164) were bred in the animal colony at MacEwan University and housed at a maximum density of 15 fish in 10 L tanks within an Aquatic Habitats (AHAB, Aquatic Ecosystems, Inc. Apopka, FL, USA) three-shelf bench top system. MacEwan reared fish were from broodstock obtained from the University of Ottawa (Ottawa, ON, Canada) in March, 2018. Zebrafish were from a wild-type strain. Zebrafish were acclimated in the habitat for a minimum period of one week prior to testing and were adults, mixed gender (~50:50, male:female), and experimentally naive. Daily checks on water pH, dissolved oxygen, and temperature were conducted. The pH of the habitat water was kept between 6.5 and 8.0, dissolved oxygen was 5.0–10.0 ppm, and the temperature was maintained between 26 and 28 °C. The habitat photoperiod was set to an automated 12-h light and dark cycle with the lights turning on at 8AM and off at 8PM. Zebrafish were fed (GEMMA Micro, Westbrook, Maine, United States of America) once per day around noon and after behavioural testing on test days. All experiments were approved by the MacEwan University Animal Research Ethics Board (AREB) under protocol number 05-12-13 in compliance with the Canadian Council for Animal Care (CCAC) guidelines for the care and use of experimental animals. This study was carried out in compliance with the ARRIVE guidelines for animal research.

Terpene administration. Limonene (97%), β -Myrcene (sum of isomers, $\geq 90\%$), and Linalool (97%) were purchased from Sigma Aldrich (Ontario, Canada). Terpene solutions were made each testing day by adding the appropriate amount of terpene to 400 ml of water taken directly from the aquatic habitat (i.e. habitat water) in a 600 ml beaker. Solutions were stirred vigorously to mix the terpene with the habitat water. Prior to mixing the habitat water and the respective terpene, habitat water pH was measured. After the addition of the terpene, the pH was measured again. pH of habitat water and terpene solutions were always within 6.8–7.5. Researchers were not blinded to treatment groups but all fish were tested in an identical manner and all data was analyzed with a motion-tracking software system.

Acute administration. Zebrafish were randomly assigned to either a control group, or to one of the terpene conditions (limonene, linalool, and β -myrcene). Within each terpene condition, fish were further distributed to one of three concentrations. The experimental groups were as follows: limonene 0.25% (n = 15), 0.5% (n = 16), 0.75% (n = 16); linalool 0.0001% (n = 15), 0.001% (n = 15), 0.00125% (n = 15); and β -myrcene 0.001% (n = 15), 0.01% (n = 15), and 0.1% (n = 15). To the best of our knowledge, our study is the first to test terpenes using

zebrafish as an animal model, therefore the terpene concentrations were based on previous murine studies^{18,22,26}. However, careful pilot testing was performed in order to determine appropriate concentrations of the three terpenes that zebrafish could tolerate. During preliminary testing, we noticed the zebrafish were highly sensitive to linalool and would display signs of extreme sedation (lack of swimming, floating sideways, very immobile). As a result, we used much lower doses of linalool than prior studies²².

On testing days, zebrafish were netted from their housing tank and placed in a 600 ml dosing beaker that contained the respective terpene solution. Seedling heat mats (Hydrofarm Horticultural Products, Petaluma CA) were placed underneath the dosing beaker in order to maintain water temperature within 26–28 °C. Zebrafish remained in the dosing beaker for a period of 10 min. In order to prevent external visual stimulation, a piece of white plastic was placed around the beaker⁴⁰. After the 10-min dosing period, fish were immediately netted and placed into the arena for behavioural testing. Identical procedures were performed for control fish excluding the addition of terpene to the dosing beaker.

Repeated administration. Zebrafish were randomly assigned to one of the following groups, control (n = 20), limonene (0.39%, n = 20), or β -myrcene (0.0083%, n = 20), with each condition containing two replicate groups. The repeated dosing concentrations were based on dose response curve EC₅₀ values obtained in the preliminary dosing phase. Linalool was excluded from the repeated dosing experiment due to its limited effect in acute administration studies. Fish were transferred into spawning inserts that were added to the habitat tanks, in order to more efficiently transfer the zebrafish from the habitat tanks to the dosing tanks^{32,41}. Dosing tanks contained 1500 ml of habitat water mixed with either 5.775 ml of limonene or 0.125 ml of β -myrcene. Control dosing tanks contained only 1500 ml of habitat water. Habitat tanks were placed adjacent to the dosing tanks for each condition and were separated by white plastic cut-outs in order to prevent any external visual stimulation. The spawning inserts were then removed from the habitat tanks and placed in the dosing tank for 10 min^{32,41}. New spawning inserts were then added to the habitat tanks in order to prevent terpene contamination of the habitat tanks. Immediately after the 10-min dosing period, fish were transferred from the old spawning inserts into the habitat tank containing the new spawning insert and placed back into the aquatic habitat three-shelf benchtop system. This process was then repeated for seven days. After dosing on the seventh day, the fish were then netted and placed individually into the arena for behavioural testing. The behavioural testing procedures for the repeated dosing experiment were identical to that of the acute dosing experiment.

Open field test. The open field test is a commonly used paradigm in behavioural research to assess zebrafish anxiety-like behaviour and locomotion^{30,39,42}. In this test, anxiety-like behaviour is quantified as time spent in the various ‘virtual’ zones of the arena (thigmotaxis, transition, and center zone), with more time being spent near the walls of the arena in the thigmotaxis zone being indicative of anxiety-like behaviour. Moreover, a greater amount of time spent in the center zone indicates decreased anxiety-like behaviour. The zones were created within EthoVision XT (v. 11, Noldus, VT, USA) motion tracking software and include a ‘center’ zone that has a diameter of 8.5 cm, a thigmotaxis zone which spanned 8.5 cm from the walls of the arena, and a ‘transition’ zone in between the two (Supp. Fig. 1). Locomotion in this test was quantified by measuring various aspects of movement including distance moved, immobility, high mobility, and meandering. Meandering is a proxy for erratic movement⁴³ and was quantified as the change in directional degree per centimeter travelled. Immobility was set to a 5% threshold in EthoVision, meaning that less than a 5% change in the pixels of the detected fish would deem the fish as immobile. Furthermore, fish that demonstrated a minimum 60% change in pixels were deemed highly mobile. Testing took place in a white circular plastic arena with a diameter of 34 cm and a height of 16 cm. For each trial, the arena was filled to a height of 6 cm with fresh habitat water that was changed after every third trial. Trials began after the 10-min dosing period, or last day of repeated administration, and fish were netted and individually placed in the testing arena halfway between the center and thigmotaxis zone. Motion-tracking recording of the fish then began, and trials lasted a duration of 10 min. Additionally, ‘heatmaps’ were generated in EthoVision and display a coloured representation of combined fish localization across all trials within an experimental condition using the ‘per heatmap’ option which generates the colour range based on the data within each group. Due to the sensitivity of the heatmaps to outliers, fish that demonstrated immobility of greater than 100 s in the open field or novel object approach test were removed solely from the group heatmaps. Based on this criteria, n = 1 (myrcene 0.001%), n = 4 (limonene 0.5%), n = 5 (limonene 0.75%), and n = 2 (control) fish were removed from the open field test group heatmaps.

Novel object approach test. The novel object approach test is another well-validated behavioural assay used to assess boldness and anxiety-like behaviour^{30,35,37,39}. Immediately after an open field test trial, a novel object was placed directly in the center of the arena and motion-tracking recording was initiated via EthoVision. The novel object was a LEGO® figurine (2 cm × 4.25 cm) that was multicoloured in order to prevent any colour bias^{35,44}. Trials ran for a duration of 10 min and afterward fish were netted and placed back into their habitat tanks. In each trial, distance moved, time spent in the thigmotaxis, transition, and center zone was measured. The virtual zones in this test were identical to those used in the open field test and group heatmaps were also generated for novel object approach test data. Identical to the open field test, fish who were immobile for 100 s or greater during a novel object approach trial were removed solely from group heatmaps. This includes n = 2 (myrcene 0.001%), n = 2 (limonene 0.25%), n = 4 (limonene 0.5%), n = 2 (linalool 0.00125%), and n = 3 (control).

Statistical analysis. Data were assessed for normality using the D’Agostino-Pearson omnibus normality test. For the acute dosing experiment, parametric data was analyzed using a one-way ANOVA followed by post-hoc Dunnett’s multiple comparison test. Non-parametric data in the acute dosing experiment was analyzed

using a Kruskal–Wallis with post-hoc Dunn's multiple comparison test. For the repeated dosing experiment parametric data was analyzed using a nested one-way ANOVA with Dunnett's multiple comparison test. Non-parametric data was first normalized by setting the smallest value in the data set as 0%, and the largest value as 100%, then a nested one-way ANOVA with post-hoc Dunnett's multiple comparison test was performed. Additionally, multiple comparison tests in both experiments had the significance level adjusted using multiplicity adjusted P values. All data were analyzed using GraphPad Prism (Version 9.1.0; GraphPad, San Diego, CA, USA). EC₅₀ values were calculated in Prism using the time in the thigmotaxis zone in the novel object approach test as the dependent variable. The percent concentrations for each terpene used in the preliminary testing phase were first converted to their molar concentrations. Subsequently, the molar concentrations were transformed into their corresponding log values by the log(x) transform function in Prism. Lastly, the y-value data, or the time in the thigmotaxis zone data, was normalized by setting the highest value in each data set as 100% and the lowest as 0%, and a non-linear regression analysis was then performed in order to obtain the EC₅₀ value. An alpha level of $P < 0.05$ and a 95% confidence interval was used to indicate statistical significance. All values are presented as mean \pm S.E.M.

Results

Acute dosing experiment. Limonene—open field test. Heatmaps created from video recordings show the combined group behaviour for the control and limonene groups for the open field trials (Fig. 1A).

Time in zones. We observed a significant difference between groups for time spent in the center zone (Fig. 1B; $H(3) = 17.02$, $P = 0.0007$). Dunn's multiple comparison test indicated significant differences compared to controls for treatments 0.5% ($P = 0.0004$) and 0.75% ($P = 0.0228$). Significant differences between groups were also observed for time spent in the transition zone (Fig. 1C; $H(3) = 23.77$, $P < 0.0001$). Dunn's multiple comparison test showed that the 0.25% ($P = 0.0149$), 0.5% ($P = 0.0008$), and 0.75% ($P < 0.0001$) treatments were significantly different from controls. The time spent in the thigmotaxis zone was also significantly different between groups (Fig. 1D; $F(3, 69) = 8.248$, $P < 0.0001$). Dunn's multiple comparison test showed that the 0.25% ($P = 0.0190$), 0.5% ($P = 0.0002$), and 0.75% ($P < 0.0001$) treatments groups were significantly different from controls.

Locomotion. We observed a significant difference in distanced moved between treatments (Fig. 1E; $H(3) = 29.82$, $P < 0.0001$). Post-hoc Dunn's multiple comparison test indicated that there were significant differences compared to controls in distance moved for 0.25% ($P = 0.0004$), 0.5% ($P = 0.0026$), and 0.75% ($P < 0.0001$). No significant differences were observed between groups in meandering (Fig. 1F; $H(3) = 3.099$, $P = 0.3766$). Immobility was also observed to be significantly different between groups (Fig. 1G; $H(3) = 13.85$, $P = 0.0031$). Dunn's multiple comparison test showed that the 0.75% ($P = 0.0012$) group spent significantly more time immobile than controls. We observed a significant difference between groups in high mobility (Fig. 1H; $H(3) = 17.91$, $P = 0.0005$). Dunn's multiple comparison test showed that the 0.75% group had decreased high mobility compared to controls ($P < 0.0001$).

Linalool—open field test. Heatmaps created from video recordings show the combined group behaviour for the control and linalool groups for the open field trials (Fig. 2A).

Time in zones. We observed a significant difference between groups for time spent in the center zone (Fig. 2B; $H(3) = 7.642$, $P = 0.0540$). Dunn's multiple comparison test indicated that the 0.001% group spent significantly more time in the center zone than controls ($P = 0.0286$). There were no significant differences between groups for time spent in the transition (Fig. 2C; $H(3) = 4.963$, $P = 0.1745$). Moreover, no significant differences were observed for time spent in the thigmotaxis zone (Fig. 2D; $H(3) = 5.624$, $P = 0.1314$).

Locomotion. Here, we observed a significant difference in distance moved between groups (Fig. 2E; $H(3) = 15.54$, $P = 0.0014$). Dunn's multiple comparison test indicated that the 0.0001% ($P = 0.0311$) linalool treatment group had travelled a significantly less than controls. We observed no significant differences between groups in meandering (Fig. 2F; $H(3) = 4.810$, $P = 0.1862$), and immobility (Fig. 2G; $H(3) = 5.165$, $P = 0.1601$). We did observe a significant difference between groups in high mobility (Fig. 2H; $H(3) = 10.32$, $P = 0.0160$). However, Dunn's multiple comparison test did not indicate any significant differences for treatment groups compared to controls.

Myrcene—open field test. Heatmaps created from video recordings show the combined group behaviour for the control and myrcene groups for the open field trials (Fig. 3A).

Time in zones. We observed significant difference between groups in time spent in the center zone (Fig. 3B; $H(3) = 9.587$, $P = 0.0225$). Dunn's multiple comparison test indicated that the 0.1% treatment group spent significantly more time in the center zone than controls ($P = 0.0083$). Additionally, we observed significant differences for time spent in the transition zone (Fig. 3C; $H(3) = 13.78$, $P = 0.0032$). Dunn's multiple comparison test indicated that the 0.001% and 0.1% treatment groups spent significantly more time in the transition zone ($P = 0.0365$ and $P = 0.0028$ respectively) than controls. Significant differences between groups were also seen for time spent in the thigmotaxis zone (Fig. 3D; $H(3) = 13.87$, $P = 0.0031$). Dunn's multiple comparison test indicated that the 0.001% and 0.1% treatments groups spent significantly less time in the thigmotaxis zone than controls ($P = 0.0426$ and $P = 0.0023$ respectively).

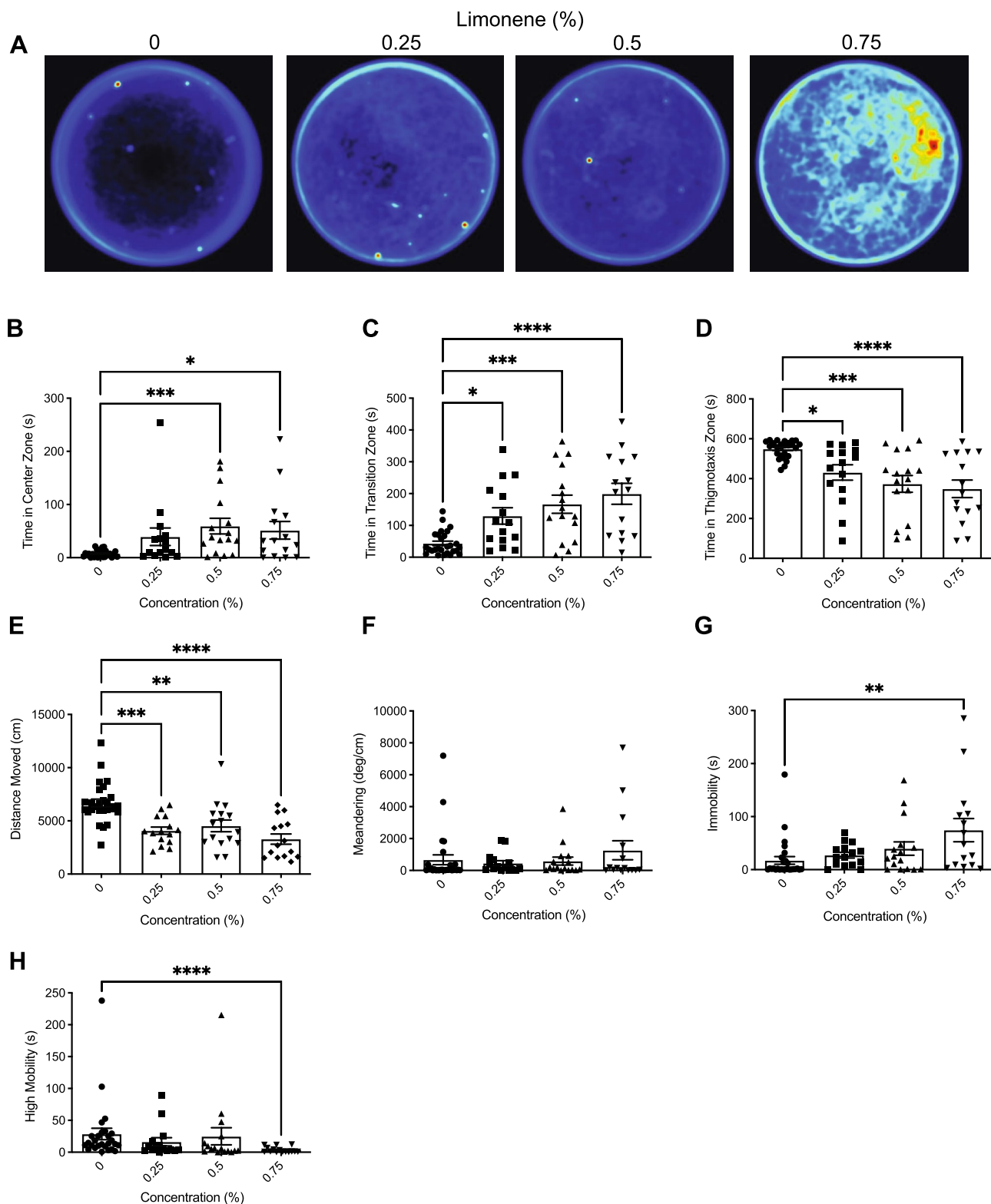


Figure 1. The effects of acute limonene administration on zebrafish behaviour assessed by the open field test. (A) Group heatmaps showing a coloured representation of the combined mean location of each group of fish across all trials. Average time spent in the center (B), transition (C), and thigmotaxis (D) zone during the open field test. Fish locomotion was quantified in the open field test by measuring distance moved (E), meandering (F), time spent immobile (G), and time spent highly mobile (H). All data are presented as mean \pm S.E.M. Significant differences between controls and limonene treated groups are indicated by * ($P < 0.05$), ** ($P < 0.01$), *** ($P < 0.001$), and **** ($P < 0.0001$).

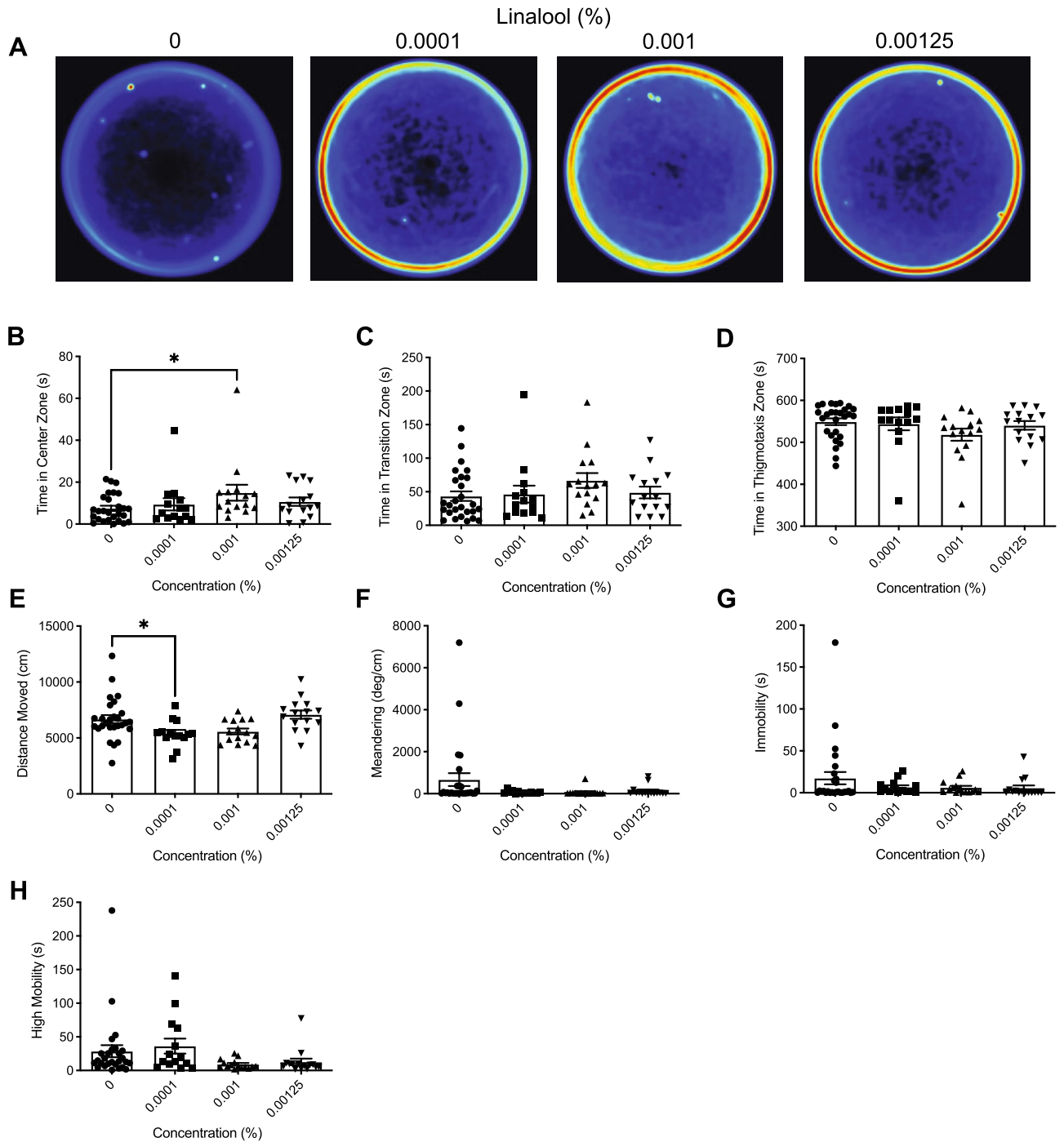


Figure 2. The effects of acute linalool administration on zebrafish behaviour assessed by the open field test. (A) Group heatmaps showing a coloured representation of the combined mean location of each group of fish across all trials. Average time spent in the center (B), transition (C), and thigmotaxis (D) zone during the open field test. Fish locomotion was quantified in the open field test by measuring distance moved (E), meandering (F), time spent immobile (G), and time spent highly mobile (H). All data are presented as mean \pm S.E.M. Significant differences between controls and linalool treated groups are indicated by * ($P < 0.05$).

Locomotion. We observed a significant difference between groups in distance moved (Fig. 3E; $H(3) = 8.307$, $P = 0.0401$). Dunn’s multiple comparison test indicated that the 0.1% treatment travelled significantly less than controls ($P = 0.0190$). No significant differences were observed between groups in meandering (Fig. 3F; $H(3) = 1.484$, $P = 0.6860$) or immobility (Fig. 3G; $H(3) = 3.824$, $P = 0.2811$). However, we did observe a significant difference between groups in high mobility (Fig. 3H; $H(3) = 10.47$, $P = 0.0150$). Dunn’s multiple comparison test indicated that the 0.1% treatment group had significantly shorter duration of time spent high mobile than controls ($P = 0.0094$).

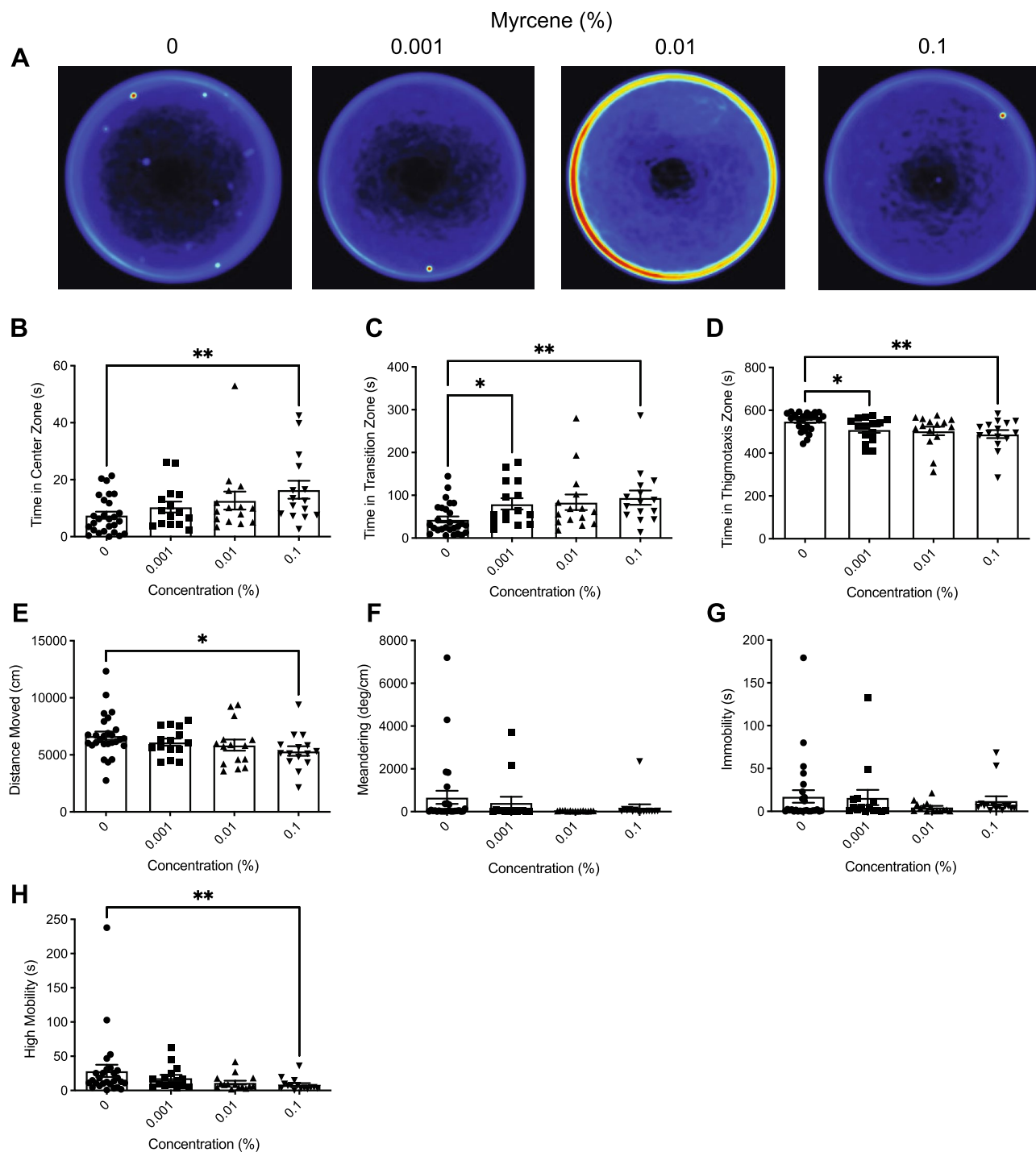


Figure 3. The effects of acute β -myrcene administration on zebrafish behaviour assessed by the open field test. (A) Group heatmaps showing a coloured representation of the combined mean location of each group of fish across all trials. Average time spent in the center (B), transition (C), and thigmotaxis (D) zone during the open field test. Fish locomotion was quantified in the open field test by measuring distance moved (E), meandering (F), time spent immobile (G), and time spent highly mobile (H). All data are presented as mean \pm S.E.M. Significant differences between controls and β -myrcene treated groups are indicated by * ($P < 0.05$) and ** ($P < 0.01$).

Limonene—novel object approach test. Heatmaps created from video recordings show the combined group behaviour for the control and limonene groups for the novel object approach test trials (Fig. 4A).

Time in zones. We observed a significant difference between groups in time spent in the center zone (Fig. 4B; $H(3) = 18.03, P = 0.0004$). Dunn's multiple comparison test showed that the 0.75% treatment spent significantly more time in the center than controls ($P = 0.0001$). Significant differences were also observed in time spent in the transition zone (Fig. 4C; $H(3) = 15.58, P = 0.0014$). Dunn's multiple comparison test showed that the 0.5% ($P = 0.0318$) and 0.75% ($P = 0.0006$) treatments spent significantly more time in the transition zone than controls. Furthermore, we observed a significant difference in time spent in the thigmotaxis zone between groups (Fig. 4D; $H(3) = 19.37, P = 0.0002$). Dunn's multiple comparison test showed that the 0.5% ($P = 0.0369$) and 0.75% ($P < 0.0001$) treatments spent significantly less time in the thigmotaxis zone than controls.

Locomotion. We observed significant differences in distance moved between treatments (Fig. 4E; $H(3) = 19.14, P = 0.0003$). Dunn's multiple comparison test indicated that the 0.25% ($P = 0.0007$), 0.5% ($P = 0.0064$), and 0.75% ($P = 0.0048$) treatments travelled significantly less than controls. No significant differences between groups were observed in meandering (Fig. 4F; $H(3) = 4.722, P = 0.1933$). However, we did observe significant differences between groups in immobility (Fig. 4G; $H(3) = 16.48, P = 0.0009$). Dunn's multiple comparison test showed that the 0.25% ($P = 0.0144$), 0.5% ($P = 0.0062$), and 0.75% ($P = 0.0028$) treatments spent significantly more time immobile than controls. Additionally, we observed a significant difference between treatments in high mobility (Fig. 4H; $H(3) = 10.61, P = 0.0141$). Dunn's multiple comparison test indicated that the 0.75% treatment spent significantly less time highly mobile than controls ($P = 0.0040$).

Linalool—novel object approach test. Heatmaps created from video recordings show the combined group behaviour for the control and linalool groups for the novel object approach test trials (Fig. 5A).

Time in zones. Here we observed no significant differences between groups in time spent in center zone (Fig. 5B; $H(3) = 1.803, P = 0.6144$), transition zone (Fig. 5C; $F(3,68) = 1.324, P = 0.2736$), or thigmotaxis zone (Fig. 5D; $F(3,68) = 1.375, P = 0.2578$).

Locomotion. Here, we observed no significant differences between groups in distance moved (Fig. 5E; $H(3) = 5.052, P = 0.1680$), meandering (Fig. 5F; $H(3) = 5.010, P = 0.1711$), or immobility (Fig. 5G; $H(3) = 2.977, P = 0.3952$). However, we did observe a significant difference between groups in high mobility (Fig. 5H; $H(3) = 15.08, P = 0.0017$). Dunn's multiple comparison test showed that the 0.00125% treatment spent significantly less time highly mobile than controls ($P = 0.0033$).

Myrcene—novel object approach test. Heatmaps created from video recordings show the combined group behaviour for the control and myrcene groups for the novel object approach test trials (Fig. 6A).

Time in zones. Significant differences were observed between groups for time spent in the center (Fig. 6B; $H(3) = 17.04, P = 0.0007$), transition (Fig. 6C; $H(3) = 19.33, P = 0.0002$) and thigmotaxis zone (Fig. 6D; $H(3) = 19.45, P = 0.0002$). Dunn's multiple comparison test indicated that compared to controls, the 0.1% treatment spent significantly more time in the center ($P = 0.0460$) and transition zone ($P = 0.0014$) and significantly less time in the thigmotaxis zone ($P = 0.0016$).

Locomotion. No significant differences were observed between groups in distance moved (Fig. 6E; $H(3) = 6.675, P = 0.0830$). No significant differences between treatments were observed in meandering (Fig. 6F; $H(3) = 1.462, P = 0.6910$). However, significant differences between treatments were observed in immobility (Fig. 6G; $H(3) = 8.327, P = 0.0397$) and high mobility (Fig. 6H; $H(3) = 11.15, P = 0.0109$). Dunn's multiple comparison test indicated that compared to controls, the 0.1% treatment group spent significantly less time immobile ($P = 0.0134$) as well as significantly less time highly mobile ($P = 0.0033$).

Repeated dosing experiment. Because of the robust anxiolytic effects of β -myrcene and limonene in our acute administration study, we tested the effect of repeated administration of these compounds. First, we calculated EC_{50} values of β -myrcene (0.0083%) and limonene (0.39%) and used these concentrations for the repeated dosing experiment.

Open field test. **Time in zones.** Here, we observed no significant differences between any group in time spent in the center zone (Fig. 7A; $F(2,3) = 0.1441, P = 0.8714$). Moreover, no significant differences were seen in time spent in the transition zone (Fig. 7B; $F(2, 57) = 0.3813, P = 0.6847$) or time spent in the thigmotaxis zone (Fig. 7C; $F(2, 57), P = 0.3043$).

Locomotion. We observed no significant differences between groups in distance moved (Fig. 7D; $F(2, 57) = 0.07074, P = 0.9318$). Additionally, there were no significant differences between groups in meandering (Fig. 7E; $F(2, 57) = 0.1237, P = 0.8839$), immobility (Fig. 7F; $F(2, 57) = 0.06465, P = 0.9375$), or high mobility (Fig. 7G; $F(2,57) = 0.9144, P = 0.4065$).

Novel object approach test. **Time in zones.** There were no significant differences between groups in time spent in the center zone (Fig. 8A; $F(2, 3) = 0.07236, P = 0.9318$). No significant differences were seen in time spent in

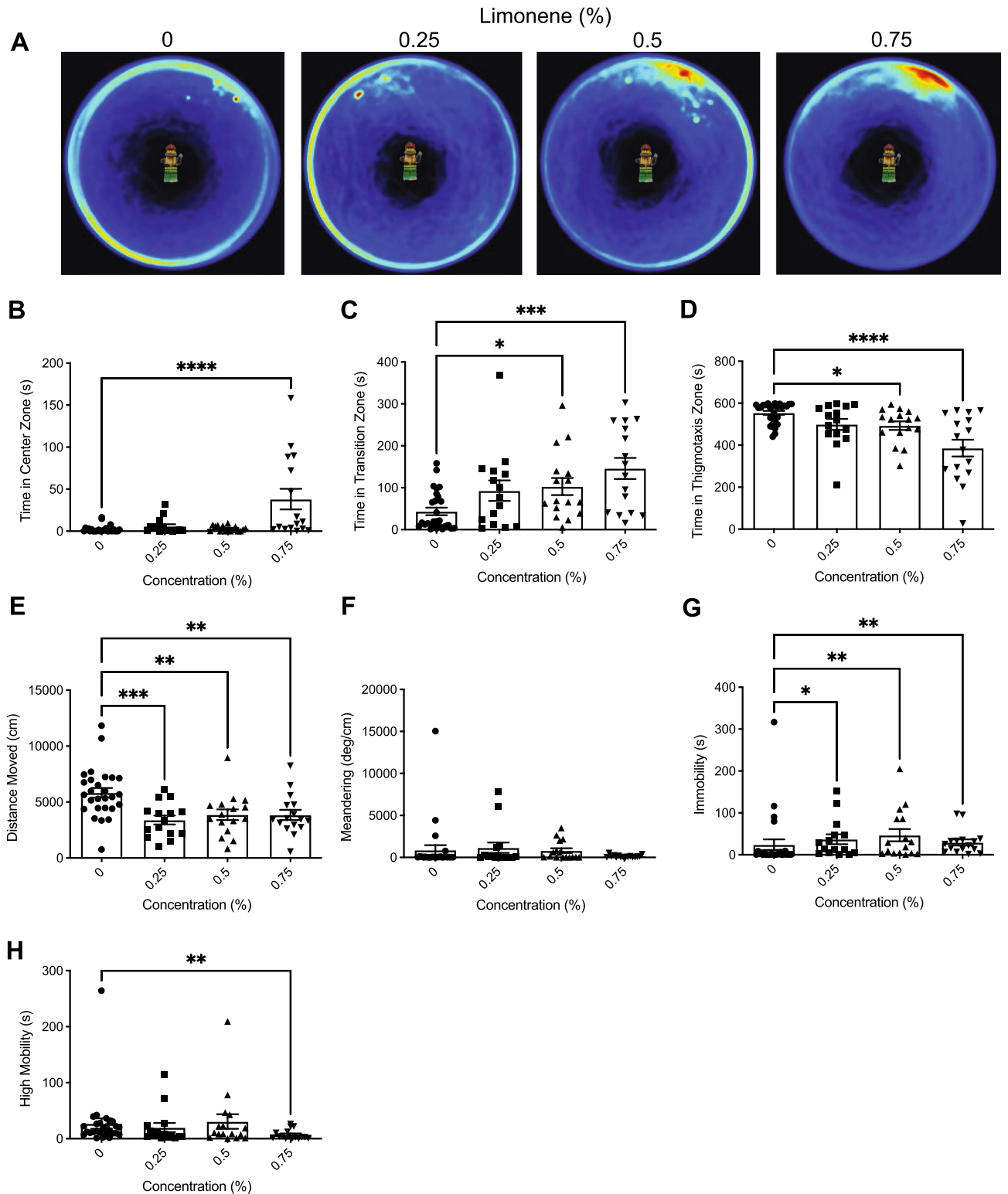


Figure 4. The effects of acute limonene administration on zebrafish behaviour assessed by the novel object approach test. (A) Group heatmaps showing a coloured representation of the combined mean location of each group of fish across all trials. Average time spent in the center (B), transition (C), and thigmotaxis (D) zone during the novel object approach test. Fish locomotion was quantified in the open field test by measuring distance moved (E), meandering (F), time spent immobile (G), and time spent highly mobile (H). All data are presented as mean \pm S.E.M. Significant differences between controls and limonene treated groups are indicated by * ($P < 0.05$), ** ($P < 0.01$), *** ($P < 0.001$), and **** ($P < 0.0001$).

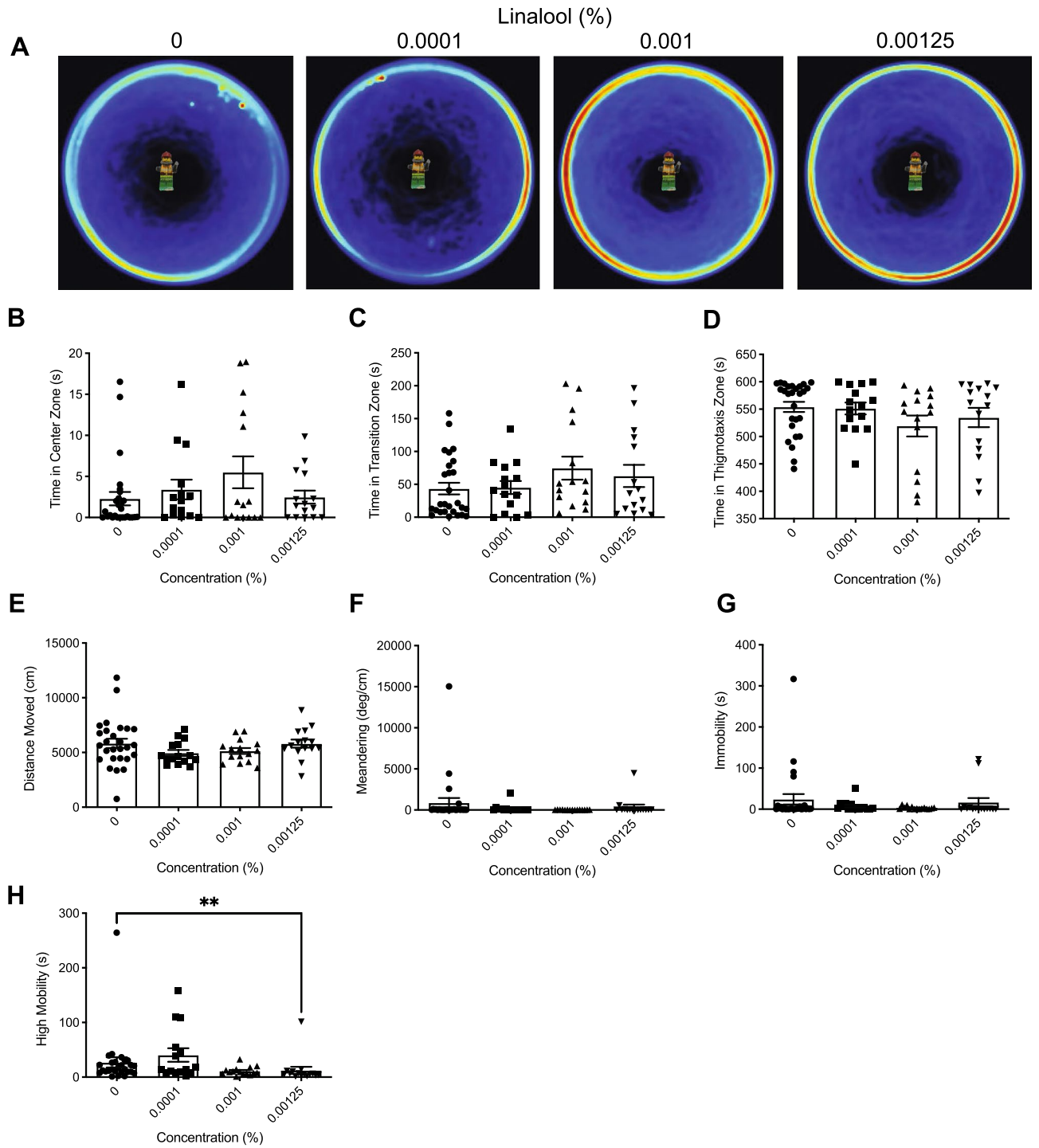


Figure 5. The effects of acute linalool administration on zebrafish behaviour assessed by the novel object approach test. (A) Group heatmaps showing a coloured representation of the combined mean location of each group of fish across all trials. Average time spent in the center (B), transition (C), and thigmotaxis (D) zone during the novel object approach test. Fish locomotion was quantified in the open field test by measuring distance moved (E), meandering (F), time spent immobile (G), and time spent highly mobile (H). All data are presented as mean \pm S.E.M. Significant differences between controls and linalool treated groups are indicated by ** ($P < 0.01$).

the transition zone (Fig. 8B; $F(2, 57) = 2.326, P = 0.1069$). Furthermore, we observed no significant differences in time spent in the thigmotaxis zone (Fig. 8C; $F(2, 57) = 2.326, P = 0.1069$).

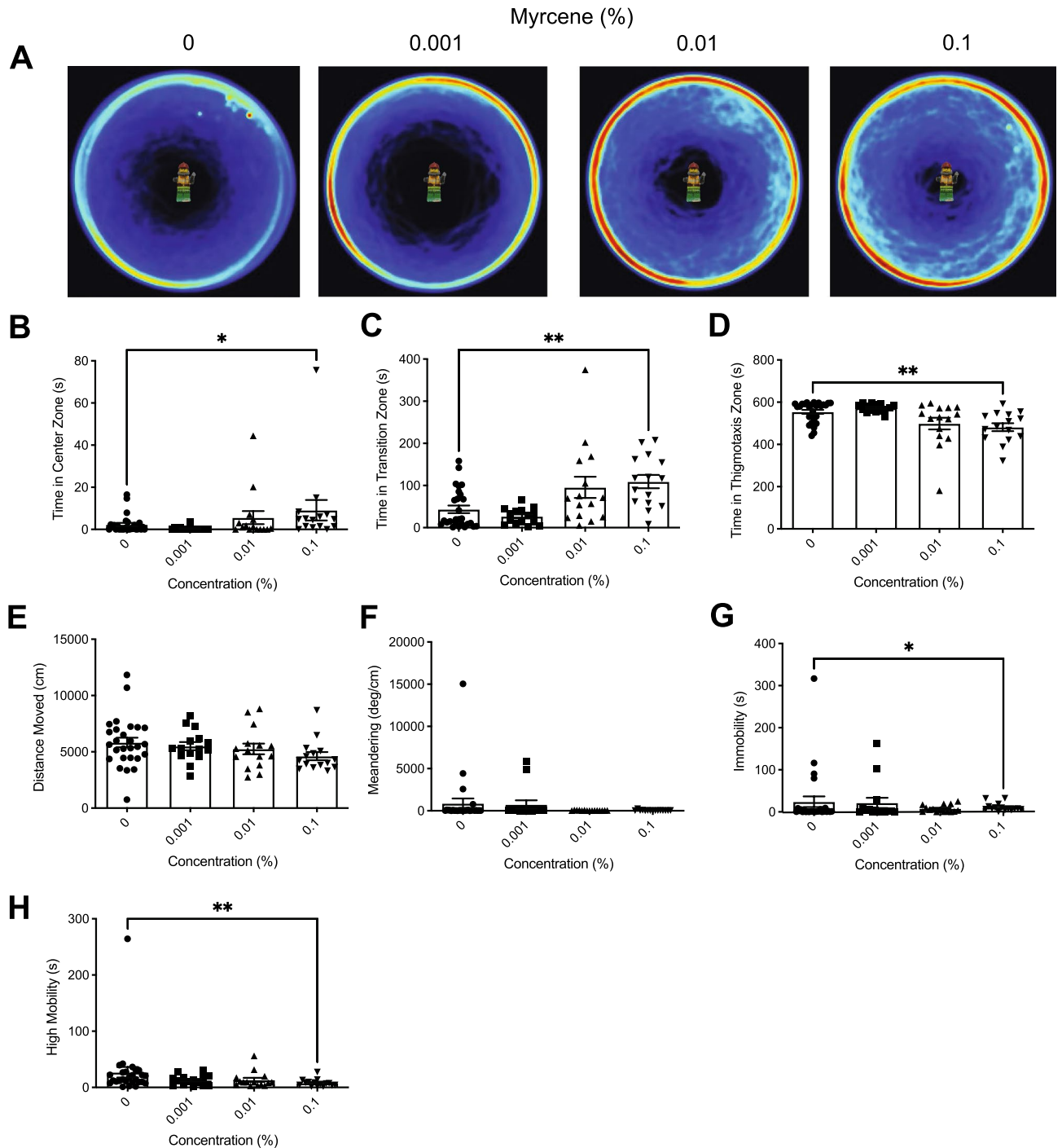
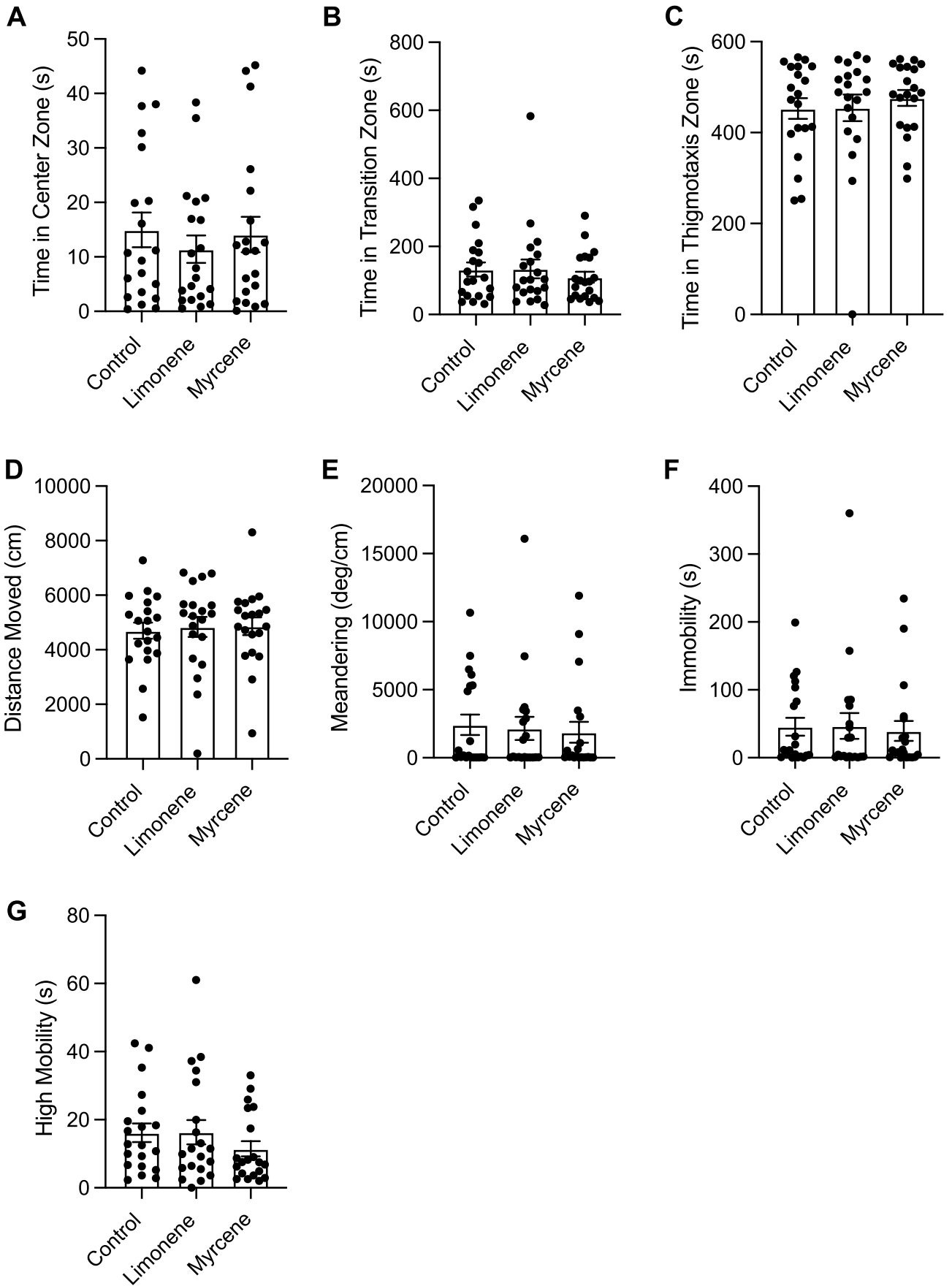


Figure 6. The effects of acute β -myrcene administration on zebrafish behaviour assessed by the novel object approach test. **(A)** Group heatmaps showing a coloured representation of the combined mean location of each group of fish across all trials. Average time spent in the center **(B)**, transition **(C)**, and thigmotaxis **(D)** zone during the novel object approach test. Fish locomotion was quantified in the novel object approach test by measuring distance moved **(E)**, meandering **(F)**, time spent immobile **(G)**, and time spent highly mobile **(H)**. All data are presented as mean \pm S.E.M. Significant differences between controls and β -myrcene treated groups are indicated by * ($P < 0.05$) and ** ($P < 0.01$).

Locomotion. Here, we observed no significant differences between groups in distance moved (Fig. 8D; $F(2, 57) = 0.7433$, $P = 0.4801$). Moreover, there were no significant differences between treatments in meandering (Fig. 8E; $F(2, 3) = 0.2369$, $P = 0.8025$), immobility (Fig. 8F; $F(2, 57) = 0.5978$, $P = 0.5534$), or high mobility (Fig. 8G; $F(2, 3) = 0.4706$, $P = 0.6641$).



◀ **Figure 7.** The effects of repeated terpene administration (limonene or β -myrcene) on zebrafish behaviour assessed by the open field test. Average time spent in the center (A), transition (B), and thigmotaxis (C) zone during the open field test. Fish locomotion was quantified in the open field test by measuring distance moved (D), meandering (E), time spent immobile (F), and time spent highly mobile (G). All data are presented as mean \pm S.E.M. No significant differences were observed between control and terpene treated groups.

Discussion

This study investigated the effect of terpenes on zebrafish locomotion, anxiety-like behaviour, and boldness when dosed acutely, and repeatedly over a 7-day period. This yielded three major findings. First, in the acute dosing experiment limonene and β -myrcene had significant effects on a myriad of variables that confer decreased anxiety-like behaviour, increased boldness, and altered locomotion. Second, zebrafish exposed to 0.0001% linalool demonstrated a significant reduction in locomotion in the open field test, suggesting a sedative effect at this concentration. Lastly, locomotion, anxiety-like behaviour, boldness, and locomotion were not impacted by repeated exposure to limonene or β -myrcene for 7 consecutive days, suggesting that repeated exposure causes neuroadaptations or metabolic tolerance resulting in a negligible effect on behaviour.

Acute dosing experiment. In the open field test, we observed reductions in locomotion in all three terpenes tested (see Figs. 1, 2, and 3). This is consistent with previous murine studies which noted a similar decrease in locomotion as a result of limonene, β -myrcene, and linalool administration. Do Vale et al. (2002) observed that a 200 mg/kg dose of limonene significantly decreased the number of crossings in the arena by 71% and rearing behaviour at doses of 100 and 200 mg/kg by 55–88% in an open field test¹⁸. β -Myrcene showed similar effects with a 100 and 200 mg/kg dose decreasing the number of crossings by 49 and 36% and rearing behaviour by 70 and 79% respectively¹⁸. Interestingly, β -myrcene and limonene were shown to have similar effects to diazepam (a benzodiazepine with sedative properties) on locomotion in an open field test¹⁸. Similarly, de Almeida et al. (2012) also found significant decreases in murine locomotion that was comparable to diazepam in an open field test from 25, 50, and 75 mg/kg intraperitoneal injections of limonene²⁷. In our study, in contrast to limonene and β -myrcene, linalool caused less of a decrease on locomotion. Distance moved was decreased compared to controls only at the lowest dose (Fig. 2e, f; 0.0001%) while meandering, immobility, and high mobility, were not impacted (Fig. 2g, h, and i respectively). The decrease in distance moved observed at 0.0001% is consistent with Buchbauer et al. (1993), who found that mice exposed to a linalool fragrance had a 73% reduction in motility²¹. However, it is unknown why higher concentrations did not have the same effect. Overall, limonene and β -myrcene produced sedative effects on zebrafish, consistent with previous literature.

Limonene, myrcene, and linalool also demonstrated significant reductions in anxiety-like behaviour in the open field test (Fig. 1b–d, Fig. 2b, and Fig. 3b–d). Limonene (0.5% and 0.75%), linalool (0.001%), and β -myrcene (0.1%) groups all spent significantly more time in the center zone, while limonene (0.25%, 0.5%, and 0.75%) and β -myrcene (0.001% and 0.1%) spent significantly less time in the thigmotaxis zone compared to controls. This finding is consistent with murine studies that observed anxiolytic effects from linalool inhalation assessed by the light/dark test²³ and from limonene inhalation assessed by the elevated plus maze test²⁶. In contrast to the anxiolytic effect of β -myrcene found in our study, do Vale et al. (2002) observed that mice injected with 25 mg/kg of β -myrcene had a significant reduction of number of entries to the open arms of the elevated plus maze test, indicating an anxiogenic effect¹⁸. This discrepancy could be due to a multitude of factors including species differences, route of administration, and chosen terpene concentrations. For instance, do Vale et al. (2002) also found no significant differences in mice behaviour for intraperitoneal injection of limonene at concentrations of 10, 25, and 50 mg/kg compared to controls in the elevated plus test¹⁸. However, Lima et al. (2013) found that mice exposed to 0.5% and 1% inhaled limonene spent a significantly greater amount of time in the open arms of an elevated plus maze test as well as increased number of entries in the open arms compared to controls, indicating an anxiolytic effect²⁶. Thus, the impact of terpenes on behaviour may be sensitive to the concentrations utilized and the route of administration.

The novel object approach test is a reliable behavioural paradigm that measures exploratory behaviour in the presence of a novel object. Boldness in animals may lead to benefits such as foraging opportunities, increasing mate attraction, and gaining information about a predator threat⁴⁵. Thus, there exists a delicate balance of risk versus reward, where 'bold' fish are more likely to engage in novel object inspection. In our study, we observed a significant increase in boldness in the novel object approach test for limonene and β -myrcene. At certain concentrations (See Fig. 4b–d and Fig. 6b–d), zebrafish exposed to limonene (0.5 and 0.75%) or β -myrcene (0.1%) demonstrated an increase in time spent in the center zone and transition zone, and a decrease in time spent in the thigmotaxis zone, which is consistent with increased boldness. Interestingly, linalool did not have a significant impact on zebrafish boldness in the novel object approach test at any concentration. Linck et al. (2010) found that mice exposed to a 1% linalool treatment demonstrated increased social interaction and decreased aggression when presented when paired with an unfamiliar mouse²³, which could be interpreted as an increase in boldness facilitating socialization. Possibly our behavioural test is not as sensitive as a social interaction measure? However, it has been shown that when zebrafish are kept in pairs, bold zebrafish are more likely to act aggressively in order to establish dominant-subordinate relationships⁴⁶. Laboratory mice have also demonstrated the tendency to develop a social hierarchy that is maintained through aggression⁴⁷. Thus, if linalool exposure has a similar effect on mice and zebrafish, decreased aggression would suggest less bold behaviour rather than increased boldness, and therefore future studies should examine exploratory behaviour with other paradigms.

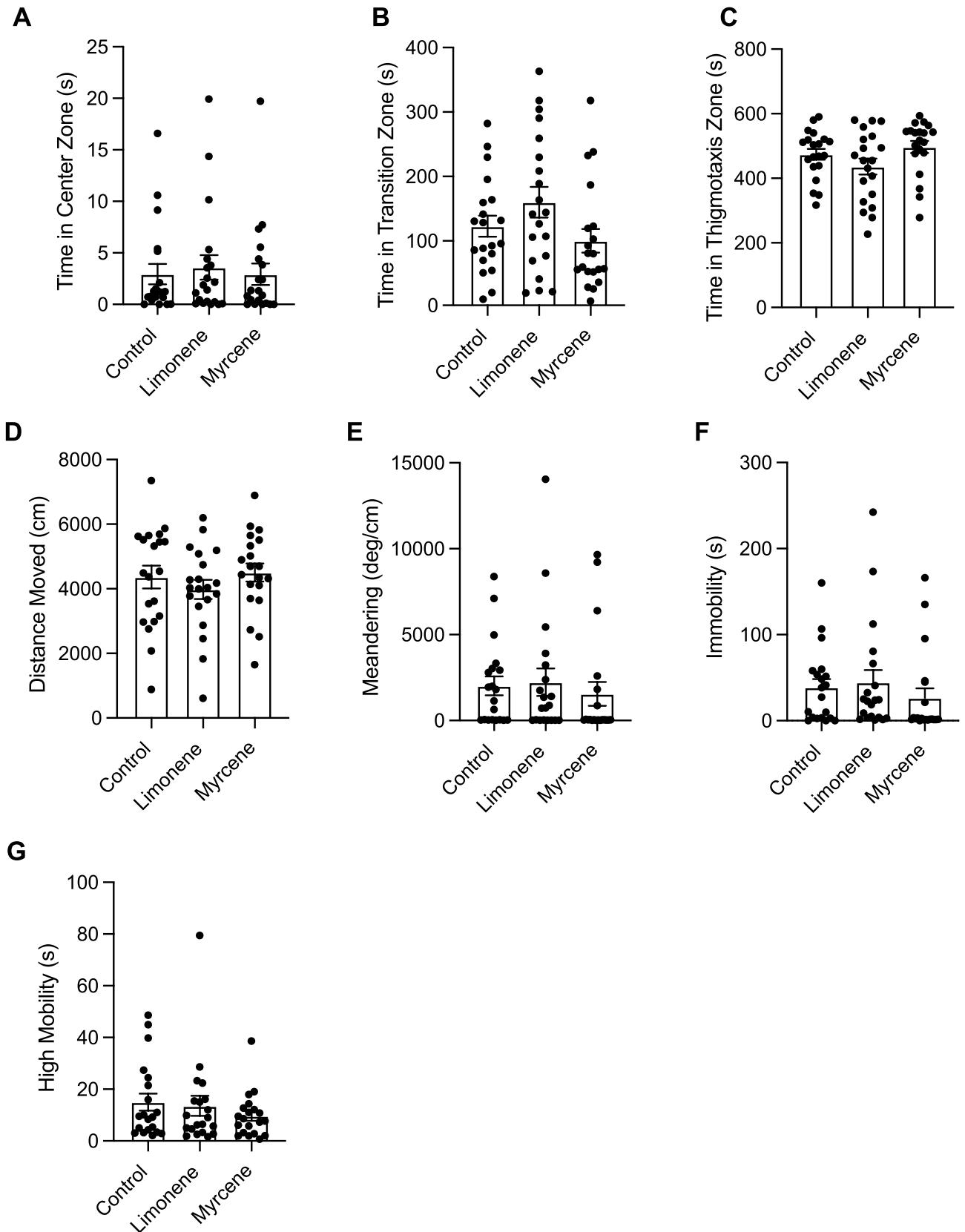


Figure 8. The effects of repeated terpene administration (limonene or β -myrcene) on zebrafish behaviour assessed by the novel object approach test. Average time spent in the center (A), transition (B), and thigmotaxis (C) zone during the novel object approach test. Fish locomotion was quantified in the novel object approach test by measuring distance moved (D), meandering (E), time spent immobile (F), and time spent highly mobile (G). All data are presented as mean \pm S.E.M. No significant differences were observed between control and terpene treated groups.

Repeated dosing experiment. In the acute dosing experiment, we observed numerous significant behavioural alterations with β -myrcene and limonene, however, in the repeated dosing experiment we observed no significant effects limonene or β -myrcene on anxiety-like behaviour, boldness, and locomotion. This lack of behavioural response may be due to a variety of reasons. Zebrafish may become quickly tolerant to terpenes resulting in no behavioural effects when tested at the end of the repeated dosing schedule. Prior zebrafish studies on repeated drug exposure and withdrawal have shown that the timing of testing after a repeated dosing schedule can have a significant impact on the results. Dean et al. (2020) repeatedly dosed zebrafish with nicotine for a period of 21 days and assessed behaviour using the novel object approach test immediately after the 21-day period and again on day 23³⁵. Dean et al. (2020) observed no significant changes to locomotion when tested on day 21, however locomotion was significantly decreased when tested again on day 23, suggesting symptoms of nicotine withdrawal took time to manifest³⁵. Moreover, Dean et al. (2020) observed opposite effects in boldness behaviour between zebrafish acutely exposed to nicotine and those exposed repeatedly over a 21-day period³⁵. Zebrafish acutely exposed to nicotine demonstrated an increase in boldness behaviour, whereas zebrafish chronically exposed to nicotine for a 21 day period and tested one hour afterward demonstrated a decrease in boldness³⁵. This discrepancy between acute and repeated exposure results is congruent with our study which found significant effects in the acute dosing experiment but no significant effects in the repeated dosing experiment. This same pattern is present in the results from Holcombe et al. (2013), who observed significant increase in anxiety-like behaviour in zebrafish exposed to a daily 0.2% dose of ethanol when tested on day 2 of withdrawal, but not day 9⁴⁸. In our study, results suggest that there were no effects of repeated limonene or β -myrcene exposure in zebrafish anxiety-like behaviour, boldness or locomotion. This could be due to pharmacodynamic factors (i.e. neuroadaptation), pharmacokinetic factors (i.e. increased metabolism), or a combination of the two. Because we only tested at one time point which was immediately after the 7-day dosing period, it is possible that we failed to capture the true effects of repeated limonene or β -myrcene exposure and testing two days after the dosing period could yield a withdrawal effect. Future behavioural studies would benefit from withdrawal testing to better understand the development of tolerance to these compounds.

In conclusion, our findings indicate that zebrafish acutely dosed with limonene and β -myrcene exhibit decreased anxiety-like behaviour and locomotion and increased boldness. Linalool had little effect on anxiety-like and boldness behaviour and mainly impacted locomotion. Additionally, repeated dosing with limonene and β -myrcene produced no effects compared to controls, suggesting that zebrafish quickly build tolerance to these compounds. Our study combined with previous research provides strong support for a sedative and anxiolytic effect of limonene and β -myrcene, and warrants further investigation into the therapeutic value of terpenes in animal models and in humans. Terpenes have the potential to become valuable therapeutic compounds for the treatment of many mental health conditions.

Received: 18 June 2021; Accepted: 13 September 2021

Published online: 28 September 2021

References

- Zuardi, A. W. History of cannabis as a medicine: A review. *Rev. Bras. Psiquiatr.* **28**(2), 153–157. <https://doi.org/10.1590/s1516-4446006000200015> (2006).
- Nuutinen, T. Medicinal properties of terpenes found in Cannabis sativa and Humulus lupulus. *Eur. J. Med. Chem.* **157**, 198–228. <https://doi.org/10.1016/j.ejmech.2018.07.076> (2018).
- Al-Ghezi, Z. Z., Busbee, P. B., Alghetaa, H., Nagarkatti, P. S. & Nagarkatti, M. Combination of cannabinoids, delta-9-tetrahydrocannabinol (THC) and cannabidiol (CBD), mitigates experimental autoimmune encephalomyelitis (EAE) by altering the gut microbiome. *Brain. Behav. Immun.* **82**, 25–35. <https://doi.org/10.1016/j.bbi.2019.07.028> (2019).
- Amin, M. R. & Ali, D. W. Pharmacology of medical cannabis. *Adv. Exp. Med. Biol.* **1162**, 151–165. https://doi.org/10.1007/978-3-030-21737-2_8 (2019).
- Britch, S. C., Wiley, J. L., Yu, Z., Clowers, B. H. & Craft, R. M. Cannabidiol- Δ 9-tetrahydrocannabinol interactions on acute pain and locomotor activity. *Drug. Alcohol. Depen.* **175**, 187–197. <https://doi.org/10.1016/j.drugalcdep.2017.01.046> (2017).
- Likar, R. & Nahler, G. The use of cannabis in supportive care and treatment of brain tumor. *Neuro-Oncol. Practice* **4**(3), 151–160. <https://doi.org/10.1093/nop/npw027> (2017).
- Meyer, T. et al. Real world experience of patients with amyotrophic lateral sclerosis (ALS) in the treatment of spasticity using tetrahydrocannabinol: Cannabidiol THC:CBD. *BMC. Neurol.* <https://doi.org/10.1186/s12883-019-1443-y> (2019).
- Booth, J. K. & Bohlmann, J. Terpenes in Cannabis sativa—From plant genome to humans. *Plant. Sci.* **284**, 67–72. <https://doi.org/10.1016/j.plantsci.2019.03.022> (2019).
- Andre, C. M., Hausman, J.-F. & Guerriero, G. Cannabis sativa: The plant of the thousand and one molecules. *Front. Plant. Sci.* <https://doi.org/10.3389/fpls.2016.00019> (2016).
- Russo, E. B. Taming THC: Potential cannabis synergy and phytocannabinoid-terpenoid entourage effects. *British. J. Pharmacol.* **163**(7), 1344–1364. <https://doi.org/10.1111/j.1476-5381.2011.01238.x> (2011).
- Paduch, R., Kandefler-Szerszeń, M., Trytek, M. & Fiedurek, J. Terpenes: Substances useful in human healthcare. *Arch. Immunol. Ther. Exp.* <https://doi.org/10.1007/s00005-007-0039-1> (2007).
- Baron, E. P. Medicinal properties of cannabinoids, terpenes, and flavonoids in cannabis, and benefits in migraine, headache, and pain: An update on current evidence and cannabis science. *Headache J. Head. Face. Pain.* **58**(7), 1139–1186. <https://doi.org/10.1111/head.13345> (2018).
- Russo, E. B. & Marcu, J. Cannabis pharmacology: The usual suspects and a few promising leads. *Cannabinoid. Pharmacol.* <https://doi.org/10.1016/bs.apha.2017.03.004> (2017).
- Singh, B. & Sharma, R. A. Plant terpenes: Defense responses, phylogenetic analysis, regulation and clinical applications. *Biotech* **5**(2), 129–151. <https://doi.org/10.1007/s13205-014-0220-2> (2014).
- Klumpers, L. E. & Thacker, D. L. A brief background on cannabis: From plant to medical indications. *J. AOAC. INT.* **102**(2), 412–420. <https://doi.org/10.5740/jaoacint.18-0208> (2019).
- Lorenzetti, B. B., Souza, G. E. P., Sarti, S. J., Santos Filho, D. & Ferreira, S. H. Myrcene mimics the peripheral analgesic activity of lemongrass tea. *J. Ethnopharmacol.* **34**(1), 43–48. [https://doi.org/10.1016/0378-8741\(91\)90187-i](https://doi.org/10.1016/0378-8741(91)90187-i) (1991).

17. Rao, V. S., Menezes, A. M. & Viana, G. S. Effect of myrcene on nociception in mice. *J. Pharm. Pharmacol.* **42**(12), 877–878. <https://doi.org/10.1111/j.2042-7158.1990.tb07046.x> (1990).
18. do Vale, T. G., Couto Furtado, E., Santos, J. G. & Viana, G. S. B. Central effects of citral, myrcene and limonene, constituents of essential oil chemotypes from *Lippia alba* (Mill) NE Brown. *Phytomed* **9**(8), 709–714. <https://doi.org/10.1078/094471102321621304> (2002).
19. Mirghaed, A., Ghelichpour, M. & Hoseini, S. M. Myrcene and linalool as new anesthetic and sedative agents in common carp, *Cyprinus carpio*—Comparison with eugenol. *Aquacult.* **464**, 165–170. <https://doi.org/10.1016/j.aquaculture.2016.06.028> (2016).
20. Mirghaed, A. T., Yasari, M., Mirzargar, S. S. & Hoseini, S. M. Rainbow trout (*Oncorhynchus mykiss*) anesthesia with myrcene: Efficacy and physiological responses in comparison with eugenol. *Fish. Physiol. Biochem.* **44**(3), 919–926. <https://doi.org/10.1007/s10695-018-0481-5> (2018).
21. Buchbauer, G., Jirovetz, L., Jäger, W., Plank, C. & Dietrich, H. Fragrance compounds and essential oils with sedative effects upon inhalation. *J. Pharmaceut. Sci.* **82**(6), 660–664. <https://doi.org/10.1002/jps.2600820623> (1993).
22. Souto-Maior, F. N. *et al.* Anxiolytic-like effects of inhaled linalool oxide in experimental mouse anxiety models. *Pharmacol. Biochem. Behav.* **100**(2), 259–263. <https://doi.org/10.1016/j.pbb.2011.08.029> (2011).
23. Linck, V. M. *et al.* Effects of inhaled Linalool in anxiety, social interaction and aggressive behavior in mice. *Phytomed.* **17**(8–9), 679–683. <https://doi.org/10.1016/j.phymed.2009.10.002> (2010).
24. Ma, J. *et al.* Linalool inhibits cigarette smoke-induced lung inflammation by inhibiting NF- κ B activation. *Int. Immunopharmacol.* **29**(2), 708–713. <https://doi.org/10.1016/j.intimp.2015.09.005> (2015).
25. Booth, J. K. *et al.* Terpene synthases and terpene variation in *cannabis sativa*. *Plant Physiol.* **184**(1), 130–147. <https://doi.org/10.1104/pp.20.00593> (2020).
26. Lima, N. G. P. B. *et al.* Anxiolytic-like activity and GC–MS analysis of (R)-(+)-limonene fragrance, a natural compound found in foods and plants. *Pharmacol. Biochem. Behav.* **103**(3), 450–454. <https://doi.org/10.1016/j.pbb.2012.09.005> (2013).
27. de Almeida, A. A., Costa, J. P., de Carvalho, R. B., de Sousa, D. P. & de Freitas, R. M. Evaluation of acute toxicity of a natural compound (+)-limonene epoxide and its anxiolytic-like action. *Brain. Res.* **1448**, 56–62. <https://doi.org/10.1016/j.brainres.2012.01.070> (2012).
28. Satou, T., Miyahara, N., Murakami, S., Hayashi, S. & Koike, K. Differences in the effects of essential oil from *Citrus junos* and (+)-limonene on emotional behavior in mice. *J. Essent. Oil. Res.* **24**(5), 493–500. <https://doi.org/10.1080/10412905.2012.705100> (2012).
29. Komori, T., Fujiwara, R., Tanida, M., Nomura, J. & Yokoyama, M. M. Effects of citrus fragrance on immune function and depressive states. *Ann. N.Y. Acad. Sci.* **2**(3), 174–180. <https://doi.org/10.1159/000096889> (1995).
30. Stewart, A. *et al.* Modeling anxiety using adult zebrafish: A conceptual review. *Neuropharmacol.* **62**(1), 135–143. <https://doi.org/10.1016/j.neuropharm.2011.07.037> (2012).
31. Gerlai, R., Lee, V. & Blaser, R. Effects of acute and chronic ethanol exposure on the behavior of adult zebrafish (*Danio rerio*). *Pharmacol. Biochem. Behav.* **85**(4), 752–761. <https://doi.org/10.1016/j.pbb.2006.11.010> (2006).
32. Krook, J. T., Duperreault, E., Newton, D., Ross, M. S. & Hamilton, T. J. Repeated ethanol exposure increases anxiety-like behaviour in zebrafish during withdrawal. *PeerJ* <https://doi.org/10.7717/peerj.6551> (2019).
33. López-Patiño, M. A., Yu, L., Cabral, H. & Zhdanova, I. V. Anxiogenic effects of cocaine withdrawal in zebrafish. *Physiol. Behav.* **93**(1–2), 160–171. <https://doi.org/10.1016/j.physbeh.2007.08.013> (2008).
34. Levin, E. D., Bencan, Z. & Cerutti, D. T. Anxiolytic effects of nicotine in zebrafish. *Physiol. Behav.* **90**(1), 54–58. <https://doi.org/10.1016/j.physbeh.2006.08.026> (2007).
35. Dean, R. *et al.* Opposing effects of acute and repeated nicotine exposure on boldness in zebrafish. *Sci. Rep.* <https://doi.org/10.1038/s41598-020-65382-6> (2020).
36. Egan, R. J. *et al.* Understanding behavioral and physiological phenotypes of stress and anxiety in zebrafish. *Behav. Brain. Res.* **205**(1), 38–44. <https://doi.org/10.1016/j.bbr.2009.06.022> (2009).
37. Hamilton, T. J. *et al.* Establishing zebrafish as a model to study the anxiolytic effects of scopolamine. *Sci. Rep.* <https://doi.org/10.1038/s41598-017-15374-w> (2017).
38. Maximino, C. *et al.* Measuring anxiety in zebrafish: A critical review. *Behav. Brain. Res.* **214**(2), 157–171. <https://doi.org/10.1016/j.bbr.2010.05.031> (2010).
39. Hamilton, T. J., Krook, J., Szaszkiwicz, J. & Burggren, W. Shoaling, boldness, anxiety-like behavior and locomotion in zebrafish (*Danio rerio*) are altered by acute benzo[a]pyrene exposure. *Sci. Total. Environ.* **774**, 145702. <https://doi.org/10.1016/j.scitotenv.2021.145702> (2021).
40. Dean, R., Hurst-Radke, N., Velupillai, N., Franczak, B. & Hamilton, T. J. Vision of conspecifics decreases the effectiveness of ethanol on zebrafish behaviour. *PeerJ* **9**, e10566. <https://doi.org/10.7717/peerj.10566> (2021).
41. Holcombe, A., Schalomon, M. & Hamilton, T. J. A novel method of drug administration to multiple Zebrafish (*Danio rerio*) and the quantification of withdrawal. *J. Vis. Exp.* **9**, 3. <https://doi.org/10.3791/51851> (2014).
42. Grossman, L. *et al.* Characterization of behavioral and endocrine effects of LSD on zebrafish. *Behav. Brain. Res.* **214**(2), 277–284. <https://doi.org/10.1016/j.bbr.2010.05.039> (2010).
43. Kalueff, A. V. *et al.* Towards a Comprehensive Catalog of Zebrafish Behavior 10 and Beyond. *Zebrafish* **10**(1), 70–86. <https://doi.org/10.1089/zeb.2012.0861> (2013).
44. Johnson, A. & Hamilton, T. J. Modafinil decreases anxiety-like behaviour in zebrafish. *PeerJ* <https://doi.org/10.7717/peerj.2994> (2017).
45. Osgwang, P. Inspection of a novel object by Wild and Laboratory Zebrafish (*Danio rerio* H.) in the presence and absence of alarm substance. Master's thesis. University of Bergen, Vestland, Norway (2008).
46. Dahlbom, S. J., Lagman, D., Lundstedt-Enkel, K., Sundström, L. F. & Winberg, S. Boldness predicts social status in zebrafish (*Danio rerio*). *PLoS ONE* <https://doi.org/10.1371/journal.pone.0023565> (2011).
47. Williamson, C. M., Lee, W. & Curley, J. P. Temporal dynamics of social hierarchy formation and maintenance in male mice. *Anim. Behav.* **115**, 259–272. <https://doi.org/10.1016/j.anbehav.2016.03.004> (2016).
48. Holcombe, A., Howorko, A., Powell, R. A., Schalomon, M. & Hamilton, T. J. Reversed scototaxis during withdrawal after daily-moderate, but not weekly-binge, administration of ethanol in zebrafish. *PLoS ONE* <https://doi.org/10.1371/journal.pone.0063319> (2013).

Author contributions

T.J.H. and J.S. designed the experiment. J.S. and S.L. conducted the experiment. J.S. performed the statistical analysis of the data, interpreted the data, and wrote the main manuscript text. T.J.H. edited the manuscript and prepared all figures.

Funding

Funding was provided by the Natural Sciences and Engineering Research Council of Canada (NSERC) Discovery grant to T.J.H. (04,843).

Competing interests

The authors declare no competing interests.

Additional information

Supplementary Information The online version contains supplementary material available at <https://doi.org/10.1038/s41598-021-98768-1>.

Correspondence and requests for materials should be addressed to T.J.H.

Reprints and permissions information is available at www.nature.com/reprints.

Publisher's note Springer Nature remains neutral with regard to jurisdictional claims in published maps and institutional affiliations.



Open Access This article is licensed under a Creative Commons Attribution 4.0 International License, which permits use, sharing, adaptation, distribution and reproduction in any medium or format, as long as you give appropriate credit to the original author(s) and the source, provide a link to the Creative Commons licence, and indicate if changes were made. The images or other third party material in this article are included in the article's Creative Commons licence, unless indicated otherwise in a credit line to the material. If material is not included in the article's Creative Commons licence and your intended use is not permitted by statutory regulation or exceeds the permitted use, you will need to obtain permission directly from the copyright holder. To view a copy of this licence, visit <http://creativecommons.org/licenses/by/4.0/>.

© The Author(s) 2021