



OPEN

# Human blood type influences the host-seeking behavior and fecundity of the Asian malaria vector *Anopheles stephensi*

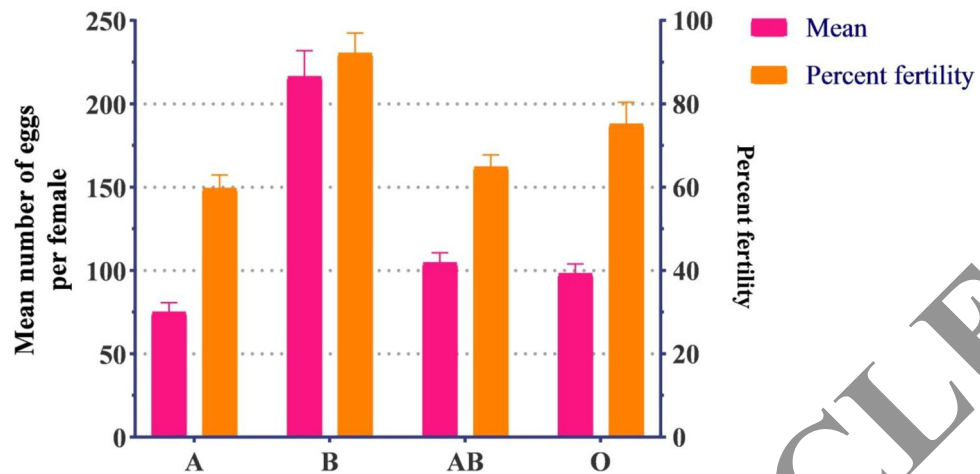
Shahmshad Ahmed Khan<sup>1,2</sup>, Nur Faeza Abu Kassim<sup>3</sup>✉, Cameron Everett Webb<sup>4</sup>, Muhammad Anjum Aqueel<sup>5</sup>, Saboor Ahmad<sup>6</sup>, Sadia Malik<sup>7</sup> & Taimoor Hussain<sup>8</sup>

The nutritional requirements of mosquitoes include both sugar (generally derived from the nectar of flowers) and blood (humans or animals). Mosquitoes express different degrees of preferences towards hosts depending on behavioral, ecological, and physiological factors. These preferences have implications for mosquito-borne disease risk. The present study is directed to reveal the effect of the human blood groups on the fecundity and fertility of the malaria vector *Anopheles stephensi*. In laboratory tests, mosquitoes were fed on ABO blood groups via artificial membrane feeders, and the level of attraction against different blood groups was tested by the electroantennogram and wind tunnel bioassay under control conditions. Results indicate that the female mosquitoes had a strong preference towards the blood group B, while in the case of females fed on O blood group had the highest digestibility rate. Overall, the human blood type had a significant impact on the fecundity and fertility of female *An. stephensi*. The highest numbers of eggs are laid, in the case of blood group B, (mean (± SD)) 216.3 (8.82) followed by the AB, 104.06 (7.67), and O, 98.01 (7.04). In the case of blood group B, females attained the highest fertility of about 92.1 (9.98). This study provides novel insight into the ABO blood type host choice of the mosquitoes that are still partially unknown and suggests encouraging personal protection for relevant individuals within communities at risk, which is a useful tool for preventing malaria where the *An. stephensi* is present as a dominant vector.

Mosquitoes pose a significant threat to human health due to the close association with the human habitat of many species, and propensity to bite people for blood, and their role in outbreaks of mosquito-borne diseases<sup>1–3</sup>. *Anopheles stephensi* Liston (Diptera: Culicidae) is among the critical vectors of malaria parasites in Pakistan, Iraq, Afghanistan, and India<sup>4</sup>. Mosquitoes of the genus *Anopheles* are important vectors of the human malaria parasites *Plasmodium falciparum* and *P. vivax*<sup>5</sup>. As most vector mosquitoes are anautogenous, females require a blood meal for the oogenesis<sup>6</sup>, and understanding blood-feeding preferences is critical for assessing mosquito-borne disease risk. The volume and quality of blood meal can play an important role in egg production and subsequently influence potential population dynamics and vector competence<sup>7</sup>. *Aedes aegypti* Linnaeus, a globally important vector of dengue viruses, when fed on animal blood, laid fewer eggs than after feeding on the blood of a human<sup>8</sup>. When *Culex quinquefasciatus*, a globally important mosquito of pets and public health importance, fed on bovine blood, it hurt fertility and fecundity compared to when provided chicken blood<sup>9</sup>.

Similarly, the source of blood provided to *Anopheles* mosquitoes can impact fecundity with human, cow, and chicken blood, having differing effects over the egg production rate of *An. gambiae*<sup>10</sup>. Beyond the source of blood, whether it is from animals or humans, the constituents of blood may play an important role, with some studies

<sup>1</sup>Department of Entomology, University College of Agriculture, University of Sargodha, Sargodha, Pakistan. <sup>2</sup>Department of Entomology, Pir Mehr Ali Shah Arid Agriculture University Rawalpindi, Rawalpindi, Pakistan. <sup>3</sup>129 Medical Entomology Laboratory, School of Biological Sciences, Universiti Sains Malaysia, 11800 Minden, Penang, Malaysia. <sup>4</sup>Marie Bashir Institute for Infectious Diseases and Biosecurity, University of Sydney, Sydney, New South Wales, Australia. <sup>5</sup>Department of Entomology, Faculty of Agriculture & Environment, The Islamia University of Bahawalpur, Bahawalpur, Pakistan. <sup>6</sup>Key Laboratory of Pollinating Insect Biology, Ministry of Agriculture, Institute of Apicultural Research, Chinese Academy of Agricultural Sciences, Beijing 100081, China. <sup>7</sup>Fatima Jinnah Women University, Rawalpindi, Pakistan. <sup>8</sup>Department of Agronomy, Pir Mehr Ali Shah Arid Agriculture University Rawalpindi, Rawalpindi, Pakistan. ✉email: nurfaeza@usm.my



**Figure 1.** The mean numbers of eggs produced by each female (out of three) reared on ABO blood groups, and the percent fertility of the next generation on the right Y-axis.

indicating the importance of isoleucine, and amino acid, in the blood, influencing the rate of egg production in some species of mosquitoes<sup>11–13</sup>.

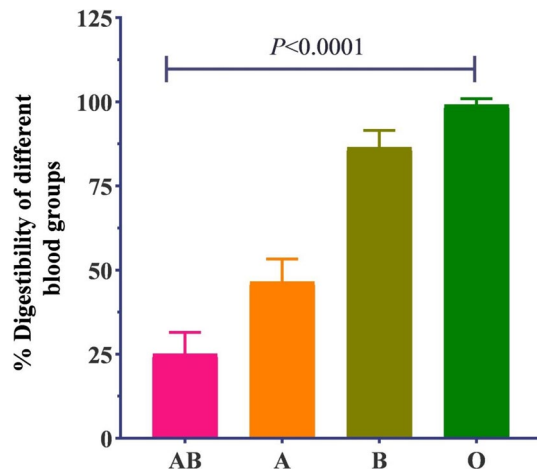
Understanding the attraction of many vector mosquitoes to human hosts could assist in determining the role of individual mosquito species in outbreaks of mosquito-borne diseases and provide critical information to inform mosquito control and surveillance programs. The preferences of some mosquitoes to feed on humans are well documented, especially *Ae. aegypti*<sup>15</sup>. While many *Anopheles* mosquitoes display a similar anthropophilic feeding behavior, which is a critical factor in determining their role in malaria outbreaks, there is also often a demonstrated difference in host-feeding preferences of *Anopheles* mosquitoes. For example, *An. gambiae* has been shown to have strong anthropophilic feeding preferences while *An. stephensi* has zoophilic preferences<sup>16</sup>. Understanding how these mosquitoes, considered primarily zoophilic, may opportunistically, or at times preferentially, respond to humans in host-seeking behavior.

Female mosquitoes use different cues to locate hosts; physical, visual, and chemical cues<sup>17</sup>. Organic molecules released from the host body are considered the most important with regard to mosquito attraction. Sweat excreted from the human body has various components that influence attraction, and even slight variations in released organic chemicals influence host attraction by mosquitoes<sup>18</sup>. Further, variations in attraction to individual humans have been a source of great interest. Hematophagous female mosquitoes show different levels of attraction towards different human beings<sup>19</sup>. It is assumed that the host-seeking response to humans is directly linked with body odor<sup>19,20</sup>. For example, *Aedes* and *Anopheles* mosquitoes are attracted more towards pregnant women, possibly because of their increased secretion of estrogen in urine<sup>21,22</sup>. The perception that some individuals are more likely to be bitten by a mosquito than others is frequently debated, and differences in human odor profiles and the response of mosquitoes have been a focus of research<sup>23,24</sup>. While an individual's odor profile may be complex and vary due to various factors, blood type is often proposed as a determinant of propensity to be bitten by mosquitoes<sup>25</sup>.

In this study, the effect of human ABO blood groups on female mosquito oogenesis and fertility was investigated under laboratory conditions using methods of electroantennography and olfactometry bioassays. The investigation aimed to determine that a specific blood group represents the following qualities (a) more attractive than all other blood groups (phagostimulant); (b) fully engorged when feeding; (c) initiated the vitellogenin; (d) must have a positive effect on oogenesis; and (e) positive effects on health and fitness of offspring. There is a paucity of published data on the effect of human blood types on the fertility and fecundity of mosquitoes. We tested the hypothesis that human blood type groups significantly influence specific components of the life cycle of *An. stephensi* under laboratory conditions.

## Results

**Fecundity and fertility.** Female *An. stephensi* that were fed on blood group B laid an average of highest numbers of eggs 216.3 (8.81), whereas those fed on blood groups O and AB laid an average of (mean ( $\pm$ SD)) 98.01 (7.04) and 104.06 (7.67) eggs per female. Mosquitoes fed on blood group A laid the lowest mean numbers of eggs 65 (3); this is in line with the results from scanning electron microscope with the lowest development in the oogenesis was recorded (Fig. 1). But in the case of percent fertility, the females fed on blood group B acted as the best nutrition for the female mosquitoes because the females had the highest percent fertility 92.1 (9.98). On the other hand, the females fed on blood group A had the lowest percent fertility 59.7 (4.68). The data suggest that fecundity, fertility, and oogenesis are directly linked with the blood groups and the availability of the blood types.



**Figure 2.** The percent rate of digestion of different blood groups after feeding by female *Anopheles stephensi* under control conditions.

**Digestibility.** A difference was observed in the rate of digestion of different blood groups after 12 h with visible differences in specimens of engorged mosquitoes according to the human blood group types provided. Approximately 6 h post-feeding, those fed on blood group A partially changed into black while those fed on B and O completely changed into black. However, the abdomen of females fed on the blood groups, AB, still maintained a reddish color. After 12 h of the female having O blood groups in their stomachs showed two-third of the abdomen distended. After 24 h, the O blood group was half-digested in the abdomen while the AB batch has changed the color of the abdomen red to black, and the females engorged on blood group B had abdomen slightly more than three quarter still filled with blood. After 48 h, the O blood group color completely disappeared from the abdomens of all the females. In contrast, the blood groups A and B disappeared after about 60 h of post-fed. The AB blood group was the last one, which was disappeared after 72 h from all blood groups.

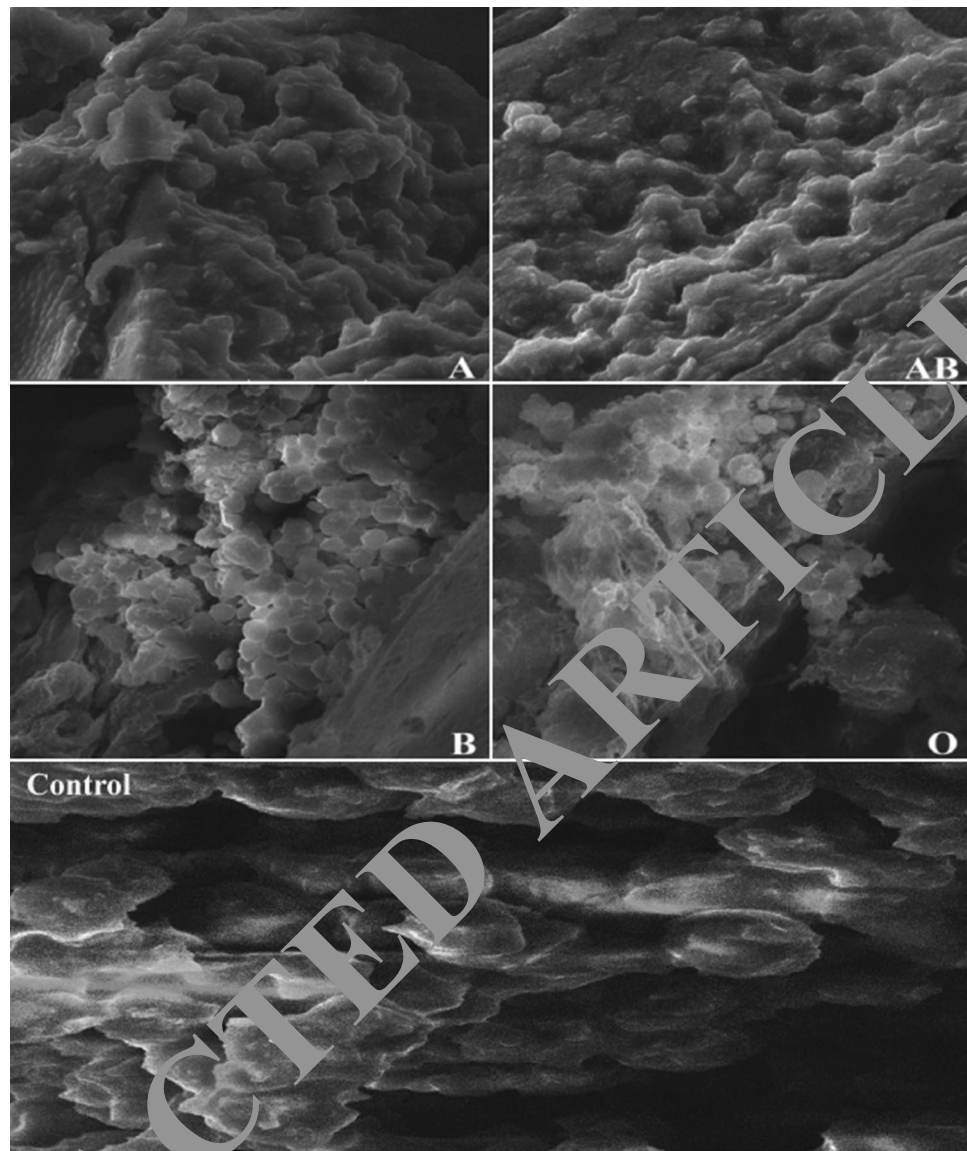
The percent rate of digestion of different blood groups after feeding by female *An. stephensi* under control condition was shown in (Fig. 2). The blood group O has the highest rate of digestion, and it is significantly different from the other blood groups ( $P < 0.0001$ ).

The use of chemical tests, such as precipitin and bendizdine (determining the presence of iron porphyrins) tests have been used in mosquito blood feeding experiments and here, a positive reaction was observed for the both tests up to 100% in the case of the AB blood group after the engorgement. Defaecated matter collected from the cages of each blood group also gave positive results.

**Effect on oogenesis.** Using a scanning electron microscope (SEM), two clusters of ovarioles were identified in the ovaries of the female fed over blood group B, 36 h post engorgement. While the development of ovaries completed after 48 h in the case of blood groups A and AB. The result indicated that after the single engorgement of blood group O, the development of ovaries had not started. But here in this study, the females were selected after 36 h and were presented to SEM to test the ovary development stages. The ovarioles were situated in the middle of the spongy fat bodies like structure (Fig. 3). After 36 h, the ovaries development in female mosquitoes fed on blood group B looks mature. While the females fed over blood groups A, AB and O are still under immature conditions 36 h post-feeding (Fig. 3).

The total number of ovarioles in all females mosquitoes fed on different blood groups ranged from 100 to 600, strictly linked to the blood groups<sup>26</sup>. The highest numbers of ovarioles were observed in females fed on blood group B; all the three females have, on average of 550 ovarioles. The lowest numbers of ovarioles were counted in the female fed on blood group O about 150 ovarioles (Fig. 3).

**Electroantennography.** The electroantennography (EAG) experiments were conducted to test the response of different olfactory receptors on the antennae. First of all, the electroantennogram responses of *An. stephensi* were recorded against the known olfactory stimuli, including lactic acid, 1-octen-3-ol, and isovaleric acid. After recording the results of control stimuli, the treatment stimuli were applied, and the response was recorded. The 5–7 days old unfed female *An. stephensi* mosquitoes gave a high blood group linked EAG response. Air current from blood group B indicated a significantly stronger response over the other blood groups. The amplitude response for the other blood group O is lower than the B. While the A blood group is the least attractive one blood group because the female showed the lowest level of response amplitude (Fig. 4A). The electroantennogram response is directly related to the time of air current in seconds; as the time of air current increases, the olfactory response of antennae was also increased. All the blood groups led to a significant response against the control of air currents (Fig. 4B).



**Figure 3.** Scanning electron microscope results of the effect of different blood groups (A, B, AB, and O) on the oogenesis (SEM Magnification 2.5 kx, 20  $\mu$ m).

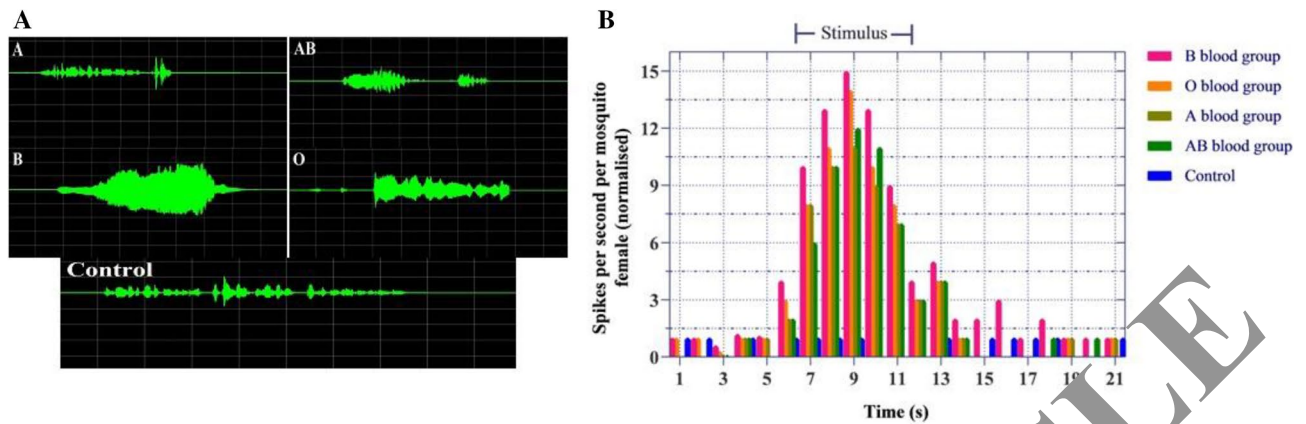
**Wind tunnel bioassays.** In wind tunnel bioassays, *An. stephensi* exhibited a clear preference for human blood type B, as evident by the significantly higher number of mosquitoes attracted to that human blood type (Fig. 5). The second and third most attractive blood groups were the O and AB, while there was no significant ( $P=0.1454$ ) difference between the number of mosquitoes attracted to blood group A compared with control.

Similarly, *An. stephensi*, when exposed to olfactory cues derived from volunteers of differing blood group types, displayed a strong preference for blood group B compared to other blood groups (Fig. 5). The second most important stimulus was the O blood group, while the A and AB were the least attractive blood groups.

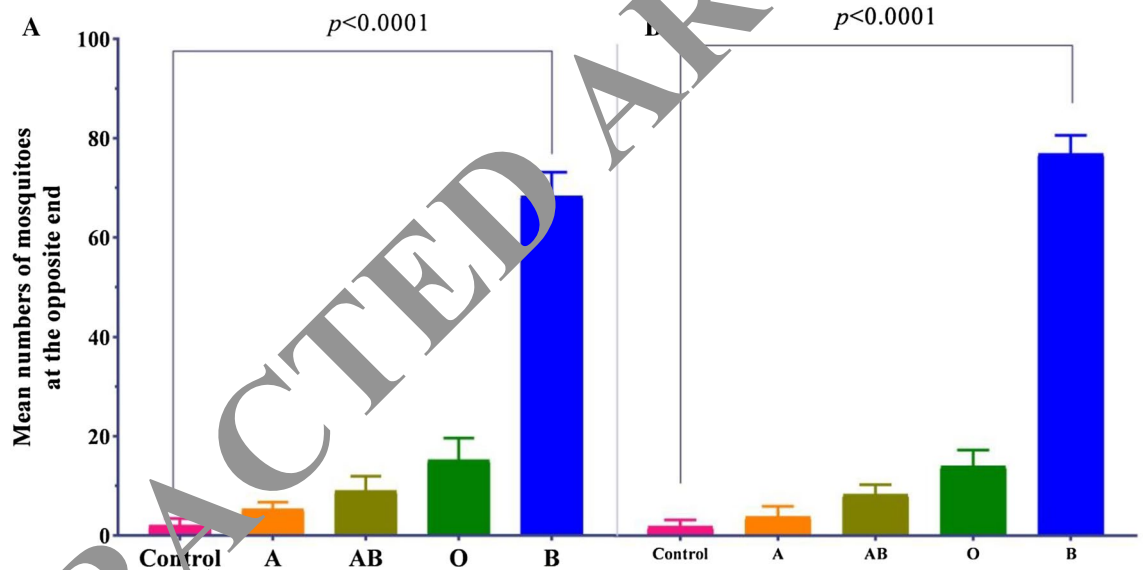
**Mosquito fitness.** The females fed on blood groups B and O showed the highest level of mosquito fitness, as evident by the lowest mortality rates for eggs, larvae, pupae, and adults (Fig. 6). When compared with the females fed on blood, groups A and AB have a significantly high larval mortality, egg infertility, and adult death rate.

**Feeding rate and egg production.** About 91% of the females fed on blood group B were fully engorged compared with the 70%, 54%, and 45% in the case of blood groups O, AB, and A (Fig. 7). On the other hand, the percent numbers of eggs were also higher in the case of females fed on blood group B (Fig. 8A). The rate of egg production and engorgement with blood group B increased more than 12% relative to blood group O and 55% in the case of A blood type (Fig. 8B), suggesting that the blood group B can be highly beneficial and attractive to female mosquitoes.





**Figure 4.** Electroantennogram response of *Anopheles stephensi*. (A) The electroantennogram response of female *An. stephensi* antennae to all ABO blood groups along with the scented air puffs. (B) The graph is showing the observed changes in numbers of spikes of antennae to the different blood group stimuli (applied during the gray box). The value shown is the number of spikes per second, per female mosquito (*An. stephensi*). A value of 1 (dashed line) indicates no change in spike rate. The control stimuli applied to the antenna: Puffs of unscented air in black color demonstrate the lack of response of the antenna.

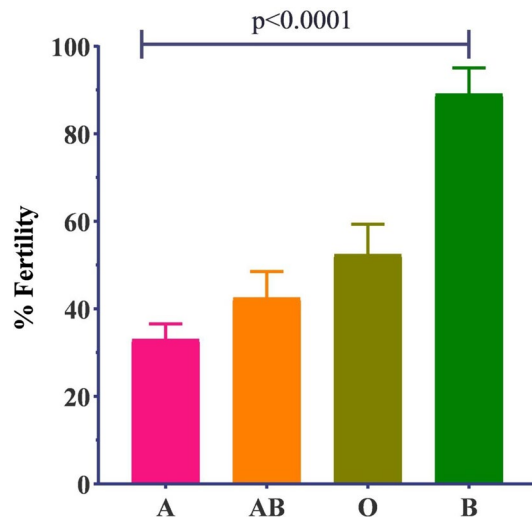


**Figure 5.** The response of female mosquitoes in wind tunnel bioassay. (A) The response of female mosquitoes against different blood groups. There is no significant difference observed between the unscented air and the blood group A ( $P=0.0172$ ), and there is also no significant difference was also present between the blood groups A and AB ( $P<0.0053$ ). The arm having the blood group B have significantly higher numbers of mosquitoes at the opposite end ( $P<0.0001$ ). (B) The response of female mosquitoes against filth collected from the hands and the armpit of the person having ABO blood groups.

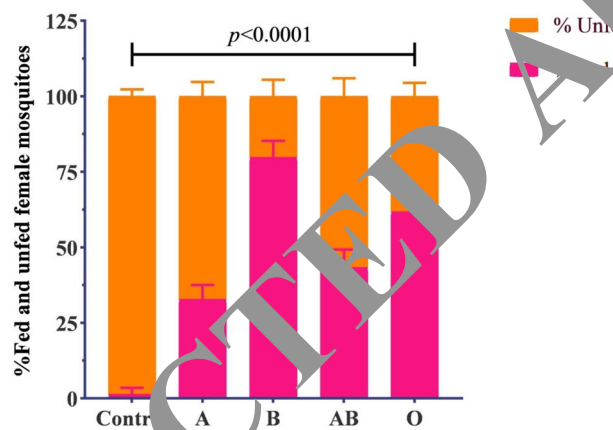
## Discussion

This is the first time the host-seeking and reproductive response of *An. stephensi* to human blood group types has been undertaken. The findings of these laboratory studies suggest a strong preference in host-seeking of individuals with type B blood group with concomitant increased fecundity of mosquitoes feeding on that blood. Our results reflect those of other researchers who have found that the source of blood-fed on by mosquitoes of pets and public health importance influences fecundity and other aspects of their life cycle.

The amount and the quality of blood meal is a vital thing to female mosquitoes for their gonotrophic cycles and rate of egg production<sup>27</sup>. However, the variation in the egg production rate and the number of females moving towards their first gonotrophic cycles is strictly linked with the amino acids and the protein contents in each blood meal<sup>28</sup>. Djamilia et al. evaluated the effects of two blood meals, the chicken and cattle blood, on the egg development rate of *An. maculipennis* and found fecundity were significantly lower with the chicken blood as compared with the cattle blood, while fertility is not associated with blood meals<sup>29</sup>. The fertility, fecundity, hatching rate, developmental time of the larvae of *Cx. theileri* is strongly associated with the source of blood



**Figure 6.** The percent fertility in all the rearing boxes and in 10 replications. All the blood groups are significantly different from each other, and the blood group “B” has the highest percentage fertility in the next generation.



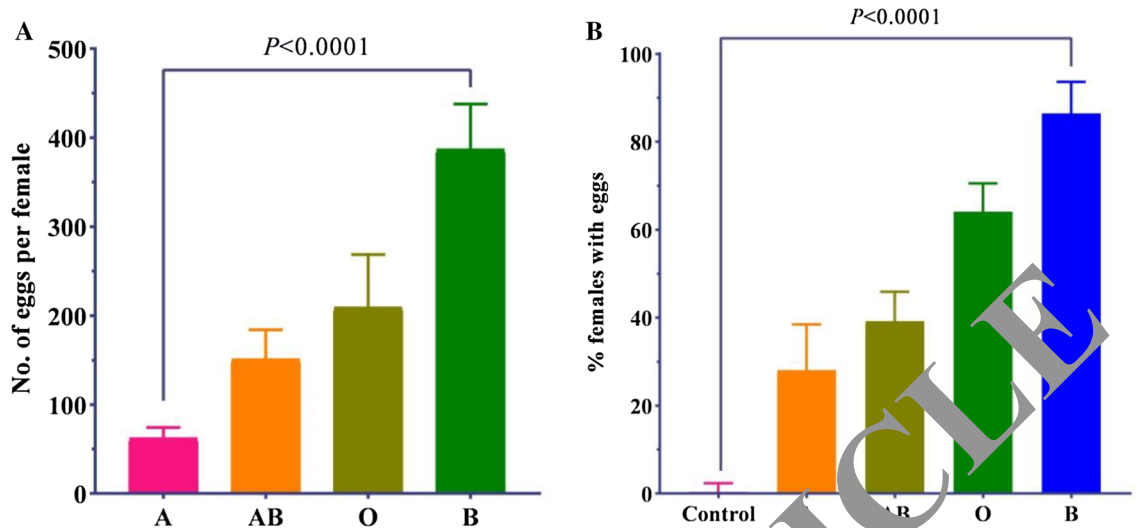
**Figure 7.** The percent fed and unfed female mosquitoes. The female *Anopheles stephensi* mosquitoes were reared under different control conditions on different blood groups.

means. The fecundity of females fed on chicken blood was significantly higher than the females fed on human and cow blood<sup>30</sup>.

We have analyzed the rate of digestion of different blood types by *An. stephensi* female mosquitoes by several methods; observational studies, precipitin test, and benzidine test<sup>31–33</sup>. The visual and the tests indicated that the blood group O is the blood that females could easily digest in all three replications. This may be because of the chemical structure of the O blood group; it is simpler than the other blood groups in case of antigen absence. Several methods are used to study the egg development mechanism or oogenesis in female mosquitoes. But the most important and widely used of them are a light microscope, scanning electron microscope, and fluorescent confocal microscopy<sup>34–36</sup>. This study demonstrated that SEM was an effective method to study the ultrastructure of ovaries of female mosquitoes fed on different blood groups.

Experiments on females fed on ABO blood groups and control reveal the different levels of changes in the structure of reproductive organs that lead to the series of changes in cell structure. Blood type B elucidated the significantly higher changes in the cell structure and ovaries development. One of the protuberant changes in the cell structure of females fed on blood group B is a large number of un-oriented microvilli in the area of oocytes. The same type of microvilli was also observed in the case of females fed on blood groups O and AB but few in numbers and small in size. Results indicated that these microvilli are not uniform in length, and these are not regularly present in all females fed on different blood groups. This type of result is in line with the Brandt<sup>37</sup> microvilli are not uniform in length<sup>36</sup>.

The results are also in line with the scanning electron microscopy results obtained by Clements<sup>38</sup>. The total numbers of ovarioles ranged from 120 to 650 in blood group B and 60 to 400 in the case of O and AB blood



**Figure 8.** Association between the different blood groups and the fecundity of *Anopheles stephensi*. **(A)** The females fed on different blood have different numbers of eggs laid by female *An. stephensi*. **(B)** Female with eggs from each treatment were identified under a microscope and counted. Results indicated that the numbers of females with eggs were significantly higher than all other blood groups in case of blood group B. About 80% of the females fed on blood group B have the eggs while the least numbers of females with eggs were identified in the case of females fed on blood group A.

groups. Only 20–30 ovarioles were identified in the case of females fed on blood group A. The results are also in agreement with Roth and Porter<sup>39</sup>, who described the oogenesis in *Ae. aegypti*.

Most of the autogenous mosquitoes detect the volatile semiochemicals by the use of olfactory neurons present on antennae. Earlier studies indicated the EAG response of *An. gambiae* towards the volatile compounds of human sweat and the carboxylic acid from the cheese<sup>40,41</sup>. About eight volatile compounds were identified from the chicken feces that provoked the electroantennogram response from the *Cx. quinquefasciatus*<sup>42</sup>. These volatiles also derived the behavior of female *Cx. quinquefasciatus* under control conditions. The female *Ae. albopictus* showed the inverse dose-dependent EAG response against certain fatty acids and alcohols derived from the human skin emanation<sup>43</sup>. In the case of the present study, substantial electroantennogram responses were displayed by the antennae of tested mosquitoes against known stimulants L-lactic acid, 1-octen-3-ol, and isovaleric acid. After confirming the sensitivity and response of antennae and the EAG towards the human-specific known stimulants, treatment stimuli ABO blood groups were applied and demonstrated a positive response of *An. stephensi* to the blood group B. The results from the electroantennogram response clearly stated that the blood groups have significant effects on the behavior of female *An. stephensi*; the blood group A is the least attractive.

Artificial blood-feeders with collagen membranes are an effective method to evaluate attraction responses of blood and chemical compounds released by the human skin and the sweat. The chemical volatiles permeated from the collagen membrane attracted the female mosquitoes and indicated the landing behavior in choice assays. In most of the previous studies, the collagen membrane was used in artificial membrane feeders to study the hematophagous behavior of female mosquitoes<sup>44</sup>. The blood emitted chemical volatiles that attracted the hungry female mosquitoes. Female *Cx. quinquefasciatus* and *Ae. aegypti* showed different levels of attraction towards the avian and bovine<sup>44</sup>. Blood composition and concentration are the key drivers of this type of behavior in female mosquitoes, mainly in a wide choice.

In the present study, both tests conducted in the olfactometer indicated that blood groups have a substantial impact on the behavior, fertility, and fecundity of the female *An. stephensi* mosquitoes. In both, cases blood group B acted as a mosquito magnet so that the human-specific blood groups may act as an important part for the identification of autogenous female mosquitoes such as *An. stephensi*.

*An. stephensi* is one of the most important vectors of malaria in the Indian subcontinent<sup>45</sup> and is also distributed across the South Asia region and the Middle Eastern countries such as Afghanistan, Bahrain, Bangladesh, China, Egypt, Iran, India, Iraq, Pakistan, Oman, Saudi Arabia and Thailand<sup>46</sup>. The percentage of the population in these countries under threat of malaria due to this vector are Bahrain (23%), Bangladesh (34%), China (29%), Egypt (13%), Iran (25%), India (34%), Iraq (28%), Pakistan (33%), Saudi Arabia (18%) and Thailand (37%). The countries with the 2nd highest percentage of B blood group are Burkina Faso (29%), China (29%), Ghana (19%), Indonesia (29%), Iraq (28%), Ivory Coast (23%), Laos (35%), Mongolia (30%), Myanmar (33%), North Korea (30%), Philippines (25%), Singapore (25%), Sri Lanka (27%), Thailand (37%) and Vietnam (31%)<sup>47</sup>. According to the present study *An. stephensi* prefer to feed on blood group B. So the countries with a higher percentage of blood group B need more protection against this malarial vector *An. stephensi*.

In conclusion, the present study supports the hypothesis that blood groups have effects on the fertility, fecundity, and behavior of female *An. stephensi*, just like *An. albimanus*<sup>44</sup>. *An. stephensi* is a well-known vector involved in the transmission of malarial parasites (*P. falciparum* and *P. vivax*), and given blood from different vertebrates affects the behavior, fertility, and fecundity of mosquitoes; our results suggest this may be due to differences in

the chemical composition and concentration of blood of vertebrate<sup>29,44</sup>. Significant differences were observed in both the host-seeking behavior in response to differing ABO blood group types and concomitant differences in fecundity following blood-feeding by *An. stephensi* in a laboratory setting. The results of this study represent an important breakthrough in the field of parasitology and malaria control. It provides clear insights about the behavior of female mosquitoes that not only may have implications for determining in those in the community most at risk of exposure to malaria parasites, and consequently possibly prioritized for anti-malarial medication. It opens potential opportunities for the development and adaptation of novel mosquito control and surveillance strategies that exploit the host-seeking behaviours demonstrated here.

## Methods

**Rearing.** All mosquitoes used in these experiments were derived from a laboratory-reared colony of *An. stephensi* initially established (six generations) in University College Agriculture, University of Sargodha. Uninfected mosquitoes were maintained in the laboratory; in gauze-covered boxes (30 cm wide × 30 cm high × 50 cm deep) under control condition 27 ± 2 °C temperature and 75–80% relative humidity. Auto ON/OFF switches with the timer were used to break the scotophase (dark) period in the control conditions of the laboratory with the light: dark cycle set to 12:12 h<sup>48</sup>. A 10% fructose solution supplemented with 0.05% para-aminobenzoic acid (PABA) was provided to mosquitoes. The adult mosquitoes were reared on blood provided via an in situ electronically derived artificial membrane feeder, set at 37 ± 1 °C, and offered twice a week, and offered twice a week given their need for another blood meal approximately 5–6 h after the first<sup>49</sup>. Multiple blood feeding is vital for *Anopheles* species as it has been demonstrated as influencing reproductive behavior<sup>50</sup>. Oviposition cups were provided two days following the second blood meal. The larvae were reared under laboratory conditions described above and provided a certified Laboratory Rodent Diet (LRD) Lab Diet 5001<sup>51</sup>.

**Fecundity and fertility.** To determine differences in fecundity (number of eggs) and fertility (percentage of fertile eggs) in *An. stephensi* mosquitoes, cages of mosquitoes were provided ABO blood groups and control (distilled water) via artificial membrane feeders (as described above for mosquito rearing). The blood was obtained from the blood bank of DHQ (one batch of each blood group was used for each replication), Chakwal Punjab, Pakistan. A total of 10 replicate cages were used for each blood type and control, so 10 batches of each blood group (ABO) (just to reduce the potential individual to individual variation) were obtained from the DHQ. After each replication along with the new batch of each blood group, a new strain of mosquitoes was used just to reduce the learning behavior of mosquito. Feeding success was determined by calculating the percentage of fed mosquitoes, and also, the numbers of fully engorged female mosquitoes were recorded.

To determine fecundity, females from each blood group were removed, killed, and dissected under a microscope, and the numbers of eggs per female were counted 60 h post-blood-feeding. Additionally, to determine oviposition and larval development, 40 fully fed female mosquitoes were caged in one of three replicate glass cages with gauze (25 cm wide × 25 cm high × 25 cm deep) and provided wet filter papers were placed for egg-laying. The total number of eggs was counted after every 12 h from 48 h until 96 h post-blood-feeding under a light microscope. The total numbers of eggs/40 females/box for each human blood group for 10 replicates were calculated.

For fertility estimation, an additional 40 gravid *An. stephensi* from each treatment and replication, including the control group, the females were gently transferred to the cages with triangular Whatman filter paper No. 1 using the mouth aspirator. The egg laid in each experimental and control group was reared in plastic trays filled with distilled water. The numbers of hatched larvae were recorded for a fertility test. While the eggs that could not be hatched into larvae up to day 7 were considered as infertile. The number of fertile and infertile eggs was recorded for all experimental and control cages.

The collected eggs from each experimental box were placed into the plastic trays (24 cm wide × 12 cm high × 7 cm deep) with water, and the development of mosquitoes was observed until adult mosquitoes had emerged from all pupae for each blood group. The water in these plastic trays was maintained at a constant level throughout immature mosquito rearing. The larvae were fed a certified Laboratory Rodent Diet (LRD) Lab Diet 5001<sup>51</sup>. The rearing was done according to the standard mass rearing of *Anopheles* techniques<sup>52</sup>. Pupae were counted and removed from the tray and placed in cages according to each human blood group type fed to allow emergence, and the percent of male and female mosquitoes was recorded. Adult mosquitoes were maintained on a 10% fructose solution supplemented with 0.05% para-aminobenzoic acid (PABA) but were not provided with a blood meal. The mortality of adult mosquitoes was recorded daily until total mortality reached 100%.

**Digestibility tests.** The precipitin and benzidine tests were used to test the effect of human blood groups ABO (on the rate of digestion in mosquitoes). The experiment was conducted in controlled laboratory conditions where the temperature, humidity, and day and night periods were maintained as described above. Mosquitoes (10 mosquitoes were used for each blood group and the same experiment was repeated 10 times) that had not been fed previously on either a sugar solution or blood were used in experiments. Mosquitoes were provided one of four different human blood group types, as previously described. After feeding the female were kept in the same boxes without any further food and water, and boxes were placed in an incubator where the temperature and the relative humidity was at a constant level (28 ± 2 °C and 80 ± 5%). The engorged female adult mosquitoes were killed at 8 h intervals, rubbed over the filter paper<sup>53</sup>, and the filter papers were placed inside the refrigerator until the test could be conducted. Approximately 48 female mosquitoes were used in each boxed marked for each blood group. The rate of blood digestion in the engorged blood was classified according to the Sella scale, following Detinova et al.<sup>54</sup>.

To perform the precipitin test, the physiological saline and the filter paper smears were extracted in a small capillary tube. The specific antiserum was also extracted in the same capillary tube at the end; the change in



color, clumping, and cloudiness of the solution indicates the presence of human blood in the tissue smears<sup>55</sup>. The collected material was heated in a steam oven for 10–12 min to apply the benzidine test at 108–110 °C. The test was used to check the traces of iron porphyrins in the abdomen of mosquitoes.

**Effect of blood groups on oogenesis.** To test the blood-specific effects on the development of the ovaries of *An. stephensi*, the ovaries of fully fed female mosquitoes were collected separately from the box of each blood group 36 h post engorgement. For scanning electron microscopy (SEM), the whole female mosquitoes were selected from each box of every blood group separately (10 females for each blood group ABO). In preparing specimens for the scanning electron microscope, the process is divided into two fixations, the primary and the secondary fixation. For the primary fixing process, the 2.5% glutaraldehyde in 0.1 M cacodylate buffer was used for the period of 2 h, followed by the three consecutive washing with the same buffer for the 20 min. While for the secondary fixation process, 1% osmium tetroxide was used for the 2 h. Then the samples were rinsed for the final time with the 0.1 M cacodylate buffer three times for 30 min.

The ovaries were dehydrated by using the graded series of acetone (50%, 70%, 80%, 90%, and 100%). The dehydrated ovaries were then transferred to the critical point drying apparatus. The recommended quantity of acetone solution was also poured into the drying chamber to avoid over-drying. Liquid nitrogen was also added into the drying critical point drying chamber. The CO<sub>2</sub> and acetone were allowed to be mixed freely; the same process was repeated eight times to confirm the drying of the specimen. The dried mosquito specimens were mounted over the stubs, and the specimens tubes were coated with a thin layer of silver. Gold-spotted SCD005 was used, and then the samples were photographed with SEM.

**Electroantennography (EAG).** To measure the response of mosquitoes to each human blood group type, EAG recordings from one antenna of *An. stephensi* female mosquito were made. Unfed female mosquitoes were anesthetized by the use of CO<sub>2</sub> and were permanently fixed with the reference electrode by the use of spectra 360 electrode gel. It was made sure that the mosquito was completely immobile except for the antennae. The tips of the antennae were pressed into the small drop of electrode gel on the recording electrode. Both of the electrodes are silver wires coated with silver chloride with a diameter of 0.2 mm. The experimental preparations were done in continuous airflow (600 mL/min, 1.5 m/s) by the Teflon tube of 0.7–0.8 cm diameter, containing about 100 mL/min dry air and the 600 mL/min moist air passed through the charcoal filter. At this stage, little modification was done in the structure of the electroantennogram, and an artificial blood feeder of mosquitoes with the membrane was attached to the system.

The blood feeder was packed in a glass jar through which continuous airflow was passed, and this air flow ends as stimuli near the mounted mosquito. The diameter of the glass tube was 0.5 mm, and the flow of air was controlled by using an ON/OFF switch; the bursts of 0.5 s of air from the blood jar were provided as a stimulus to host-seeking mosquitoes. All the blood groups were tested systematically together with the control group. The amplifier amplified the generated signals while the well-known software decoded the recordings (EAG 2000, Syntech, Hilversum, and the Netherlands). All of the test blood groups were also dissolved separately in tetril-butyl-methyl ether (TMBE), and about 30 µL of this test solution was applied onto a piece of filter paper (1.5–2 cm). About 30 min was given to the TMBE solution to evaporate from the filter paper leaving behind the blood; then, this piece of filter paper was placed into the Pasteur pipette. In the case of the control treatment, distilled water was used, and the same treatment was applied with the distilled water for the test compounds. The stimulus controller C5-01/b, Syntech, was used to inject the odor cues originating from the treated filter paper in the Pasteur pipette into the humidified and filtered air stream directed towards the antennae of immobilized mosquito. Olfactory stimuli were tested randomly against different mosquito specimens with a total of five specimens exposed to each of the human blood type groups and control.

To minimize the chances of error and to test the electrophysiological activity of the stuck female mosquito, lactic acid, 1-octen-3-ol, and isovaleric acid were used as known stimulants<sup>41,56</sup>. After that, each blood group was replicated three times to record the activity of the olfactory neurons of antennae. All the treatments of blood groups were tested randomly, and a regular interruption of control stimulus (0.1% lactic acid) was done. The regular interruption of the control stimulus was used to control the activity of the antennae. All the stimulants were expressed as a mean percent response to the control treatment. The response of different female mosquitoes to human blood groups was indicated as a mean percent response. The results were analyzed by the use of the Student's t-test.

**Wind tunnel bioassays.** Wind tunnel bioassays were used to determine the response of *An. stephensi* to four human blood groups (A, B, AB, and O) and control stimuli (distilled water). Wind tunnel bioassays have been used to evaluate the response of *Ae. aegypti*, *Cx. quinquefasciatus* and *Cx. nigripalpus* towards the blood volatiles<sup>44</sup>. A dual choice wind tunnel was converted into a “five-choice” tunnel with all five glass tubes having glass jars at their end with openings to accommodate an artificial blood feeder. A continuous flow of warm water ensured the blood remained in liquid and produced its specific smell.

A batch of approximately 100 female mosquitoes was released at the downwind end of the tunnel in the air stream coming from the five upwind end chambers. After 30 min, the numbers of mosquitoes in each of the five glass jars were counted. The mosquitoes were then sent back towards the downwind end of the wind tunnel, and the positions of odor cues were changed, including the control. Before the second time release, the fresh air was passed through the tunnel. Again the mosquitoes were released from the releasing box, and the response of the mosquitoes towards the new cues and the number of mosquitoes in each chamber at the upwind end was counted after 30 min; the same process was repeated, and for the third time with randomization. The same process was repeated 10 times with each blood group and with a new batch of mosquitoes each time.

To test the response of female mosquitoes towards human-emitted olfactory cues, an olfactometer was used in previous studies<sup>41,43</sup>. The olfactometer test was conducted in the control room; the temperature was  $27 \pm 2$  °C with 70–80% relative humidity. The optimum activity of the *An. stephensi* was observed late at night, so the experiment was conducted at 2–6 AM<sup>57</sup>.

Steel balls rubbed in the hands of persons (ten volunteers per blood group) of having ABO blood groups along with the few drops of blood group-specific sweat were placed in the glass jars at the upwind end of the olfactometer. Approximately 100 female mosquitoes were released at the downwind end of the olfactometer from the releasing cage. After 30 min, the total number of mosquitoes in each box at the upwind end was counted, including the control. After that, the mosquitoes were returned to the releasing cage; then, the positions of steel balls at the upwind end of the glass jar of the olfactometer were changed randomly to decrease the biases from the data. To remove the smell of a sweat from the olfactory tube after cleaning, the fresh air was passed for about 10 min continuously. Mosquitoes were then again allowed to enter into the olfactometer, and after 30 min, the total number of mosquitoes was counted. The same process was repeated for the third time. The same experiment was repeated 10 times with different persons and mosquitoes to decrease the chances of error. A new batch of mosquitoes was selected for each replication.

**Statistical analysis.** The mean number of eggs of *An. stephensi* were evaluated with the help of a linear model (ANOVA) and Tukey's test on Minitab® software (12.2, version, Minitab). Before performing the ANOVA, with the help of angular transformation ( $\arcsin \sqrt{x}$ ), egg viability was also transformed<sup>58</sup> for fertility. Data obtained were analyzed using R 3.2.2 software. The Shapiro–Wilk normality test was carried out, which showed that the data were not normally distributed. Hence, the Kruskal–Wallis Chi-square test was used to compare the averages of the responses of *An. stephensi* in relation to blood-group treatments.

**Ethics statement.** All applicable international, national, and/or institutional guidelines for the care and use of animals were followed.

Received: 22 July 2021; Accepted: 23 November 2021

## References

- Kilpatrick, A. M. Globalization, land use, and the invasion of West Nile virus. *Science* **334**, 323–327 (2011).
- Weaver, S. C. & Reisen, W. K. Present and future animal threats. *Antiviral Res.* **85**, 328–345 (2010).
- Njabo, K. Y., Smith, T. B. & Yohannes, E. Feeding habits of culicine mosquitoes in the Cameroon lowland forests based on stable isotopes and blood meal analyses. *J. Parasitol. Vector Biol.* **5**, 6–12 (2013).
- Oshaghi, M., Yaghoobi, F., Vatanbost, H., Abai, M. & Akbarzadeh, K. *Anopheles stephensi* biological forms, geographical distribution, and malaria transmission in various regions in Iran. *Pak. J. Biol. Sci.* **9**, 294–298 (2006).
- Seyfarth, M., Khaireh, B. A., Abdillahi, A., Bosh, S. M. & Faulde, M. K. Five years following first detection of *Anopheles stephensi* (Diptera: Culicidae) in Djibouti, Horn of Africa: Populations established—Malaria emerging. *Parasitol. Res.* **118**, 725–732 (2019).
- Hansen, I. A., Attardo, G., Rodriguez, S. D. & Drake, L. L. Four-way regulation of mosquito yolk protein precursor genes by juvenile hormone, ecdysone, nutrient-, and insulin-like peptide signaling pathways. *Front. Physiol.* **5**, 103 (2014).
- Scott, T. W., Nalsathit, A., Day, J. E., Kittayapong, P. & Edman, J. D. A fitness advantage for *Aedes aegypti* and the viruses it transmits when females feed only on human blood. *Am. J. Trop. Med. Hyg.* **57**, 235–239 (1997).
- Greenberg, J. Home nutritional requirements of adult mosquitoes (*Aedes aegypti*) for oviposition: Two figures. *J. Nutr.* **43**, 27–35 (1951).
- Richards, S. L., Johnson, S. L. & Yost, S. A. Effects of blood meal source on the reproduction of *Culex pipiens quinquefasciatus* (Diptera: Culicidae). *J. Vector Ecol.* **37**, 1–7 (2012).
- Lyimo, I., Ferguson, S., Ranford-Cartwright, L. & Ferguson, H. The impact of uniform and mixed species blood meals on the fitness of the mosquito vector *Anopheles gambiae* ss: Does a specialist pay for diversifying its host species diet? *J. Evol. Biol.* **25**, 452–460 (2012).
- Chang, Y.-Y.H. & Judson, C. L. Amino acid composition of human and guinea pig blood proteins, and ovarian proteins of the yellow fever mosquito *Aedes aegypti*; and their effects on the mosquito egg production. *Comp. Biochem. Physiol. A Physiol.* **62**, 753–755 (1979).
- Chang, Y.-Y.H. & Judson, C. L. The role of isoleucine in differential egg production by the mosquito *Aedes aegypti* Linnaeus (Diptera: Culicidae) following feeding on human or guinea pig blood. *Comp. Biochem. Physiol. A Physiol.* **57**, 23–28 (1977).
- Pitts, R. J. A blood-free protein meal supporting oogenesis in the Asian tiger mosquito, *Aedes albopictus* (Skuse). *J. Insect Physiol.* **64**, 1–6 (2014).
- Takken, W. & Verhulst, N. O. Host preferences of blood-feeding mosquitoes. *Annu. Rev. Entomol.* **58**, 433–453 (2013).
- Harrington, L. C., Edman, J. D. & Scott, T. W. Why do female *Aedes aegypti* (Diptera: Culicidae) feed preferentially and frequently on human blood? *J. Med. Entomol.* **38**, 411–422 (2001).
- Thomas, S. *et al.* Resting and feeding preferences of *Anopheles stephensi* in an urban setting, perennial for malaria. *Malar. J.* **16**, 1–7 (2017).
- Takken, W. & Knols, B. G. Odor-mediated behavior of Afrotropical malaria mosquitoes. *Annu. Rev. Entomol.* **44**, 131–157 (1999).
- Smallegange, R. C., Verhulst, N. O. & Takken, W. Sweaty skin: An invitation to bite? *Trends Parasitol.* **27**, 143–148. <https://doi.org/10.1016/j.pt.2010.12.009> (2011).
- Havlicek, J., Roberts, S. C. & Flegr, J. Women's preference for dominant male odour: Effects of menstrual cycle and relationship status. *Biol. Lett.* **1**, 256–259 (2005).
- Wedekind, C. & Furi, S. Body odour preferences in men and women: Do they aim for specific MHC combinations or simply heterozygosity? *Proc. R. Soc. Lond. B Biol. Sci.* **264**, 1471–1479 (1997).
- Roessler, P. Zur Stechmückenlockung durch den Menschen. *Med. Gesellschaften* **31**, 1579–1581 (1963).
- Lindsay, S. *et al.* Effect of pregnancy on exposure to malaria mosquitoes. *The Lancet* **355**, 1972 (2000).
- Barnard, D. R. Chemical analysis of human skin emanations: Comparison of volatiles from humans that differ in attraction of *Aedes aegypti* (Diptera: Culicidae). *J. Am. Mosq. Control Assoc.* **8**, 186–195 (2002).
- McBride, C. S. *et al.* Evolution of mosquito preference for humans linked to an odorant receptor. *Nature* **515**, 222–227 (2014).
- Anjomruz, M. *et al.* Preferential feeding success of laboratory reared *Anopheles stephensi* mosquitoes according to ABO blood group status. *Acta Trop.* **140**, 118–123 (2014).

26. Clements, A. *Development, Nutrition and Reproduction* Vol. 1 (Chapman & Hall, 1992).
27. Briegel, H. Fecundity, metabolism, and body size in Anopheles (Diptera: Culicidae), vectors of malaria. *J. Med. Entomol.* **27**, 839–850 (1990).
28. Olayemi, I., Ande, A., Danlami, G. & Abdullahi, U. Influence of blood meal type on reproductive performance of the Malaria vector *Anopheles gambiae* ss (Diptera: Culicidae). *J. Entomol.* **8**, 459–467 (2011).
29. Benhamed, D., Bendali-Saoudi, F. & Soltani, N. Effect of two blood meal types on reproduction and development in the mosquito *Anopheles maculipennis*. *J. Entomol. Zool. Stud.* **4**, 335–339 (2016).
30. Demirci, B., Durmaz, E. & Alten, B. Influence of bloodmeal source on reproductive output of the potential West Nile vector, *Culex theileri* (Diptera: Culicidae). *J. Med. Entomol.* **51**, 1312–1316 (2014).
31. Shlenova, M. Vitesse de la digestion du sang par la femelle de l'Anopheles maculipennis messae aux temperatures effectives constantes. *Med. Parasit. Moscow* **716**, 735 (1938).
32. Bull, C. G. & King, W. The identification of the blood meal of mosquitoes by means of the precipitin Test. *Am. J. Hygiene* **3**, 491 (1923).
33. Eligh, G. Factors influencing the performance of the precipitin test in the determination of blood meals of insects. *Can. J. Zool.* **30**, 213–218 (1952).
34. Marques, J. *et al.* Fresh-blood-free diet for rearing malaria mosquito vectors. *Sci. Rep.* **8**, 17807 (2018).
35. Yamany, A. Studies on the development of the ovaries of the Malaria mosquitoes, *Anopheles pharoensis*. *J. Vaccines Vaccin.* **3**, 35 (2012).
36. Greif, M. M. Studies on ovaries of mosquitoes using light and scanning microscopy. *Int. J. Mosquito Res.* **1**, 47–50 (2016).
37. Brandt, P. W. A study of the mechanism of pinocytosis. *Exp. Cell Res.* **15**, 300–313 (1958).
38. Clements, A. N. *The Biology of Mosquitoes. Volume 1: Development, Nutrition and Reproduction* (Chapman & Hall, 1992).
39. Roth, T. F. & Porter, K. R. Yolk protein uptake in the oocyte of the mosquito *Aedes aegypti*. *Cell Biol.* **20**, 313–332 (1964).
40. Pickett, J. A. & Woodcock, C. M. *Ciba Foundation Symposium 200-Olfaction in Mosquito-Host Interactions: Olfaction in Mosquito-Host Interactions* 109–213 (Wiley, 1996).
41. Costantini, C. *et al.* Electroantennogram and behavioural responses of the malaria vector *Anopheles gambiae* to human-specific sweat components. *Med. Vet. Entomol.* **15**, 259–266 (2001).
42. Cooperband, M. F., McElfresh, J. S., Millar, J. G. & Carde, R. T. Attraction of female *Culex quinquefasciatus* say (Diptera: Culicidae) to odors from chicken feces. *J. Insect Physiol.* **54**, 1184–1192 (2008).
43. Guha, L., Seenivasagan, T., Iqbal, S. T., Agrawal, O. & Parashar, B. Behavioral and electrophysiological responses of *Aedes albopictus* to certain acids and alcohols present in human skin emanations. *Parasitol. Res.* **113**, 3781–3787 (2014).
44. Allan, S., Bernier, U. R. & Kline, D. Attraction of mosquitoes to volatiles associated with blood. *J. Vector Ecol.* **31**, 71–79 (2006).
45. Malhotra, P. R., Jatav, P. C. & Chauhan, R. S. Surface morphology of the ovipositor of *Anopheles stephensi stephensi* sensu stricto (Diptera, Culicidae). *Ital. J. Zool.* **67**, 147–151 (2000).
46. Dash, A., Adak, T., Raghavendra, K. & Singh, O. The biology and control of malaria vectors in India. *Curr. Sci.* **92**, 1571–1578 (2007).
47. Contributors, W. (Wikipedia, The Free Encyclopedia, 2021).
48. O'Donnell, A. J., Rund, S. S. & Reece, S. E. The cost of day of blood-feeding: Effects on mosquito life history and malaria transmission. *Parasit. Vectors* **12**, 301 (2019).
49. Jones, J. C. & Pilit, D. R. Blood-feeding behavior of adult *Aedes aegypti* mosquitoes. *Biol. Bull.* **145**, 127–139. <https://doi.org/10.2307/1540353> (1973).
50. Briegel, H. & Hörler, E. Multiple blood meals as a reproductive strategy in Anopheles (Diptera: Culicidae). *J. Med. Entomol.* **30**, 975–985 (1993).
51. Bond, J. *et al.* Efficiency of two larval diets for mass-rearing of the mosquito *Aedes aegypti*. *PLoS ONE* **12**, e0187420 (2017).
52. Mamai, W. *et al.* Optimization of mass-rearing methods for *Anopheles arabiensis* larval stages: Effects of rearing water temperature and larval density on mosquito life-history traits. *J. Econ. Entomol.* **111**, 2383–2390 (2018).
53. West, A. & Eligh, G. The rate of digestion of blood in mosquitoes. Precipitin test studies. *Can. J. Zool.* **30**, 267–272 (1952).
54. Detinova, T. S., Bertram, D. S. & Organization, W. H. *Age-Grouping Methods in Diptera of Medical Importance, with Special Reference to Some Vectors of Malaria* (World Health Organization, 1962).
55. O'gower, A. The rate of digestion of human blood by certain species of mosquitoes. *Austral. J. Biol. Sci.* **9**, 125 (1956).
56. Cork, A. & Pickett, K. Identification of electrophysiologically-active compounds for the malaria mosquito, *Anopheles gambiae*, in human sweat excretions. *Med. Vet. Entomol.* **10**, 269–276 (1996).
57. Haddad, A. Studies of the biting-habits of African mosquitos. An appraisal of methods employed, with special reference to the twenty-four hour catch. *Bull. Entomol. Res.* **45**, 199–242 (1954).
58. Dagnelie, P. *Théories et Méthodes Statistiques, Tome* (Presses Agronomiques, 1973).

### Author contributions

M.A.A., S.A., S.M. and T.H. prepared all figures. All authors reviewed the manuscript.

### Competing interests

The authors declare no competing interests.

### Additional information

**Correspondence** and requests for materials should be addressed to N.F.A.K.

**Reprints and permissions information** is available at [www.nature.com/reprints](http://www.nature.com/reprints).

**Publisher's note** Springer Nature remains neutral with regard to jurisdictional claims in published maps and institutional affiliations.



**Open Access** This article is licensed under a Creative Commons Attribution 4.0 International License, which permits use, sharing, adaptation, distribution and reproduction in any medium or format, as long as you give appropriate credit to the original author(s) and the source, provide a link to the Creative Commons licence, and indicate if changes were made. The images or other third party material in this article are included in the article's Creative Commons licence, unless indicated otherwise in a credit line to the material. If material is not included in the article's Creative Commons licence and your intended use is not permitted by statutory regulation or exceeds the permitted use, you will need to obtain permission directly from the copyright holder. To view a copy of this licence, visit <http://creativecommons.org/licenses/by/4.0/>.

© The Author(s) 2021, corrected publication 2022

RETRACTED ARTICLE