

OPEN

Comparative one-month safety and effectiveness of five leading new-generation devices for transcatheter aortic valve implantation

Arturo Giordano¹, Nicola Corcione¹, Paolo Ferraro², Alberto Morello¹, Sirio Conte², Luca Testa³, Francesco Bedogni³, Alessandro Iadanza⁴, Sergio Berti⁵, Damiano Regazzoli⁶, Enrico Romagnoli⁷, Carlo Trani⁷, Francesco Burzotta⁷, Martino Pepe⁸, Giacomo Frati^{9,10}, Giuseppe Biondi-Zoccai^{9,11*} & The Registro Italiano GISE sull'impianto di Valvola Aortica Percutanea (RISPEVA) Study Investigators[‡]

Transcatheter aortic valve implantation (TAVI) for aortic stenosis is becoming an appealing alternative to surgical aortic valve replacement in high-risk patients and to medical therapy for inoperable ones. Several new-generation TAVI devices have been recently introduced, but comparative analyses are lacking. We aimed to compare 1-month outcomes associated with such five leading new-generation TAVI devices exploiting data collected in the prospective observational RISPEVA (Registro Italiano GISE sull'impianto di Valvola Aortica Percutanea) Study. We queried the dataset of the ongoing RISPEVA study to retrieve baseline, procedural and 1-month outcome details of patients undergoing TAVI with Acurate, Evolut, Portico, Lotus, and Sapien3. Analysis was based on unadjusted and propensity score-adjusted methods. We included 1976 patients, 234 (11.8%) treated with Acurate, 703 (35.6%) with Evolut, 151 (7.6%) with Lotus, 347 (17.6%) with Portico, and 541 (27.4%) with Sapien3. Unadjusted analysis for baseline features highlighted several significant differences, and other discrepancies were found for procedural features. Despite these differences, device and procedural success were similarly high (ranging from 98.0% to 99.4%, $p > 0.05$). However, procedural valve migration appeared more common with Acurate ($p = 0.007$), and major bleeding with Sapien3 ($p = 0.002$). Unadjusted analysis for 1-month outcomes also highlighted significant differences in the composite of death, stroke, myocardial infarction, major vascular complication, major bleeding, or renal failure (favoring Portico, $p < 0.001$), major vascular complications (favoring Lotus, $p < 0.001$), renal failure (favoring Portico, $p = 0.035$), and permanent pacemaker implantation (favoring Acurate, $p < 0.001$). Propensity score-adjusted analyses showed lower rates of major adverse events with Evolut and Portico ($p < 0.05$), major vascular complications with Lotus and Portico ($p < 0.05$), renal failure with Sapien3 ($p < 0.05$) and permanent pacemaker implantation with Acurate ($p < 0.05$). In conclusion, new-generation TAVI devices have different profiles of early comparative safety and efficacy. These findings should be taken into account for individualized decision making and patient management.

¹Unità Operativa di Interventistica Cardiovascolare, Pineta Grande Hospital, Castel Volturno, Italy. ²Unità Operativa di Emodinamica, Santa Lucia Hospital, San Giuseppe Vesuviano, Italy. ³Department of Cardiology, IRCCS Policlinico San Donato, San Donato Milanese, Milan, Italy. ⁴Divisione di Emodinamica, Dipartimento di Scienze Cardiache, Toraciche e Vascolari, Policlinico Santa Maria alle Scotte, Siena, Italy. ⁵Fondazione C.N.R. G. Monasterio Ospedale del Cuore, Massa, Italy. ⁶Department of Biomedical Sciences, Humanitas University, Rozzano, Italy. ⁷Institute of Cardiology, Fondazione Policlinico Universitario A. Gemelli IRCCS, Università Cattolica del Sacro Cuore, Rome, Italy. ⁸Division of Cardiology, Department of Emergency and Organ Transplantation, University of Bari, Bari, Italy. ⁹Department of Medico-Surgical Sciences and Biotechnologies, Sapienza University of Rome, Latina, Italy. ¹⁰IRCCS NEUROMED, Pozzilli, Italy. ¹¹Mediterranea Cardiocentro, Napoli, Italy. [‡]A comprehensive list of consortium members appears at the end of the paper. *email: giuseppe.biondizoccai@uniroma1.it

Feature	Acurate	Evolut	Lotus	Portico	Sapien3	P
Patients	234	703	151	347	541	—
Age (years)	83.5 ± 6.0	82.1 ± 6.7	82.0 ± 6.5	82.5 ± 6.5	83.1 ± 6.5	0.015
Female gender	156 (66.7%)	391 (55.6%)	83 (55.0%)	223 (64.3%)	288 (53.2%)	<0.001
Body mass index (kg/m ²)	26.1 ± 4.5	26.1 ± 4.4	25.4 ± 3.9	26.8 ± 4.6	26.1 ± 4.6	0.045
Diagnosis						<0.001
Aortic stenosis	217 (92.7%)	593 (85.4%)	129 (85.4%)	291 (83.9%)	472 (87.3%)	
Mixed aortic valve disease	9 (3.9%)	76 (10.8%)	18 (11.9%)	15 (4.3%)	53 (9.8%)	
Aortic regurgitation	5 (2.1%)	17 (2.4%)	1 (0.7%)	1 (0.3%)	2 (0.4%)	
Degenerated bioprosthesis	3 (1.3%)	17 (2.4%)	3 (2.0%)	40 (11.5%)	14 (2.6%)	
Risk						<0.001
Inoperable	5 (2.1%)	45 (6.4%)	5 (3.3%)	6 (1.7%)	50 (9.2%)	
High	195 (83.3%)	618 (87.9%)	141 (93.4%)	278 (80.1%)	433 (80.0%)	
Intermediate	34 (14.5%)	40 (5.7%)	5 (3.3%)	63 (18.2%)	58 (10.7%)	
Logistic EuroSCORE	12.9 ± 11.0	16.7 ± 11.6	16.3 ± 14.5	16.2 ± 11.6	16.7 ± 12.1	<0.001
EuroSCORE II	4.1 ± 4.2	5.0 ± 4.9	5.0 ± 6.1	4.2 ± 3.9	5.5 ± 4.8	<0.001
STS score	5.0 ± 3.8	5.6 ± 4.1	5.1 ± 4.2	6.3 ± 4.2	5.4 ± 4.2	0.054
New York Heart Association class						<0.001
I	1 (0.4%)	6 (0.9%)	5 (3.3%)	9 (2.6%)	13 (2.4%)	
II	70 (30.0%)	210 (31.8%)	35 (23.2%)	80 (23.1%)	187 (34.6%)	
III	159 (68.2%)	407 (61.6%)	104 (68.9%)	251 (72.3%)	323 (59.7%)	
IV	3 (1.3%)	38 (5.8%)	7 (4.6%)	7 (2.0%)	18 (3.3%)	
Prior cardiac surgery	21 (9.0%)	38 (5.4%)	13 (8.6%)	22 (6.3%)	40 (7.4%)	0.276
Prior aortic valvuloplasty	12 (5.1%)	33 (4.7%)	13 (8.6%)	14 (4.0%)	52 (9.6%)	0.001
Pacemaker dependency	25 (10.7%)	50 (7.1%)	13 (8.6%)	31 (8.9%)	39 (7.2%)	0.407
Prior stroke or transient ischemic attack	21 (9.0%)	38 (5.4%)	13 (8.6%)	22 (6.3%)	40 (7.4%)	0.276
Estimated glomerular filtration rate (mL/min)	65.1 ± 23.0	62.2 ± 23.8	66.5 ± 47.7	61.1 ± 24.8	62.6 ± 23.6	0.217
Left ventricular ejection fraction (%)	53 ± 11	52 ± 10	53 ± 12	54 ± 10	53 ± 10	0.424
Peak aortic gradient (mm Hg)	75.4 ± 21.3	76.4 ± 22.9	77.7 ± 23.4	71.4 ± 23.6	77.7 ± 20.9	0.014
Mean aortic gradient (mm Hg)	47.8 ± 13.8	47.3 ± 14.9	48.0 ± 14.8	48.0 ± 16.8	48.2 ± 13.8	0.896
Aortic valve area (cm ²)	0.67 ± 0.23	0.67 ± 0.26	0.66 ± 0.24	0.69 ± 0.24	0.63 ± 0.18	0.040
Aortic regurgitation						<0.001
None	89 (38.0%)	204 (29.0%)	45 (29.8%)	140 (40.4%)	124 (22.9%)	
1+	96 (41.0%)	320 (45.5%)	71 (47.0%)	123 (35.5%)	302 (55.8%)	
2+	36 (15.4%)	136 (19.4%)	29 (19.2%)	68 (19.6%)	103 (19.0%)	
3+	13 (5.6%)	43 (6.1%)	6 (4.0%)	16 (4.6%)	12 (2.2%)	
Porcelain aorta	8 (3.4%)	58 (8.3%)	9 (6.0%)	4 (1.2%)	49 (9.1%)	<0.001
Angiographically significant coronary artery disease	62 (26.5%)	198 (28.2%)	34 (22.5%)	44 (12.7%)	140 (25.9%)	<0.001
Iliofemoral tortuosity						<0.001
Mild	73 (64.0%)	121 (33.8%)	41 (49.4%)	100 (40.2%)	135 (47.2%)	
Moderate	39 (34.2%)	193 (53.9%)	40 (48.2%)	145 (58.2%)	127 (44.4%)	
Severe	2 (1.8%)	44 (12.3%)	2 (2.4%)	4 (1.6%)	24 (8.4%)	

Table 1. Baseline features at unadjusted analysis.

The management of aortic stenosis has been revolutionized by the introduction of transcatheter aortic valve implantation (TAVI) less than 20 years ago¹. After the first pioneering efforts, several landmark trials using first-generation devices established the superiority of TAVI in comparison to medical therapy encompassing valvuloplasty in patients at prohibitive surgical risk and the non-inferiority of TAVI in comparison to surgical aortic valve replacement in subjects at high or intermediate risk, and, most recently, in low-risk patients^{2,3}. Despite these breakthroughs, uncertainty persists on the long-term durability of TAVI and the precise impact of residual aortic regurgitation. Indeed, very long-term (>10 years) follow-up will be required to accurately gauge these risks¹. Awaiting such strategic data, another area of controversy is the comparison between different TAVI devices.

While all new-generation devices boast important technological refinements including reduced size and skirt to minimize paravalvular leak, there are now at least 7 different TAVI devices available for clinical use¹. Whereas Sapien3 is the only balloon-expandable valve, even among self-expandable devices, which include Acurate, Allegra, Evolut, JenaValve, Lotus, and Portico, differences abound^{4,5}. For instance, manufacturers have diversified their products with alternative choices for device length, strut thickness, cell size, radial force, skirt length, and delivery method. To date, few comparative studies have been reported on TAVI devices. In particular, Vlastra

Feature	Acurate	Evolut	Lotus	Portico	Sapien3	P
Patients	234	703	151	347	541	—
Local anesthesia	202 (86.3%)	594 (84.5%)	134 (88.7%)	313 (90.2%)	420 (77.6%)	<0.001
Transcatheter guidance	76 (32.5%)	10 (1.4%)	47 (31.1%)	128 (36.9%)	51 (9.4%)	<0.001
Femoral access	216 (92.3%)	612 (87.1%)	141 (93.4%)	303 (87.3%)	510 (94.3%)	<0.001
Percutaneous approach	208 (88.9%)	616 (87.6%)	130 (86.1%)	305 (87.9%)	464 (85.8%)	0.732
Sheathless procedure	5 (2.1%)	160 (22.8%)	4 (2.7%)	6 (1.7%)	26 (4.8%)	<0.001
Sheath size (French)	18.4 ± 2.1	15.1 ± 1.7	18.4 ± 1.8	18.4 ± 0.7	14.5 ± 1.7	<0.001
Embolic protection device						<0.001
None	232 (99.2%)	702 (99.9%)	150 (99.3%)	345 (99.4%)	519 (95.9%)	
Claret	1 (0.4%)	1 (0.1%)	1 (0.7%)	2 (0.6%)	20 (3.7%)	
Shimon	1 (0.4%)	0	0	0	2 (0.4%)	
Right ventricular pacing	118 (50.4%)	422 (60.0%)	60 (39.7%)	192 (55.3%)	452 (83.6%)	<0.001
Predilation						<0.001
None	82 (35.0%)	272 (38.7%)	93 (61.6%)	117 (33.7%)	92 (17.0%)	
One balloon	149 (63.7%)	417 (59.3%)	58 (38.4%)	225 (64.8%)	449 (83.0%)	
Two balloons	3 (1.3%)	14 (2.0%)	0	5 (1.4%)	0	
Balloon diameter (mm)	21.8 ± 2.9	20.4 ± 2.0	20.3 ± 1.9	20.7 ± 1.6	21.6 ± 2.0	<0.001
Balloon type						<0.001
Cristal	52 (34.2%)	19 (4.4%)	0	25 (10.9%)	7 (1.6%)	
Nucleus	3 (2.0%)	37 (8.5%)	7 (12.1%)	0	4 (0.9%)	
Z.Med	24 (15.8%)	72 (16.6%)	23 (39.7%)	1 (0.4%)	4 (0.9%)	
Other	73 (48.0%)	307 (70.6%)	28 (48.3%)	204 (88.7%)	434 (96.7%)	
Prosthesis						0.029
One	230 (98.3%)	681 (96.9%)	150 (99.3%)	340 (98.0%)	537 (99.3%)	
Two	4 (1.7%)	22 (3.1%)	1 (0.7%)	7 (2.0%)	4 (0.7%)	
Heterogenous device	1 (0.4%)	0	0	0	0	0.114
Device size (French)	25.0 ± 2.1	28.1 ± 3.1	24.9 ± 2.0	26.4 ± 2.2	25.0 ± 2.4	<0.001
Pacing during implant	71 (30.3%)	152 (21.6%)	16 (10.6%)	18 (5.2%)	501 (92.6%)	<0.001
Pacing rate (bpm)	181 ± 25	158 ± 36	145 ± 59	163 ± 24	182 ± 12	<0.001
Postdilation	111 (47.4%)	202 (28.7%)	2 (1.3%)	165 (47.6%)	27 (5.0%)	<0.001
Balloon diameter (mm)	23.2 ± 1.9	24.1 ± 2.6	20 ± 0	23.9 ± 2.0	22.4 ± 2.1	<0.001
Balloon length (mm)	42.1 ± 4.7	40.8 ± 2.4	40.0 ± 0	41.1 ± 2.9	40.9 ± 7.4	0.415
Fluoroscopy time (seconds)	22.7 ± 13.5	26.3 ± 16.3	30.0 ± 11.0	26.4 ± 14.1	21.5 ± 14.8	<0.001
Procedural time (minutes)	120.5 ± 50.8	113.0 ± 51.5	104.5 ± 39.6	87.4 ± 43.1	113.1 ± 46.6	<0.001
Device success	232 (99.2%)	693 (98.6%)	148 (98.0%)	343 (98.9%)	533 (98.5%)	0.899
Procedural success	232 (99.2%)	693 (98.6%)	148 (99.4%)	345 (99.4%)	533 (98.5%)	0.627
Complications						
Death	1 (0.4%)	2 (0.3%)	3 (2.0%)	1 (0.3%)	6 (1.1%)	0.085
Valve migration	5 (2.1%)	7 (1.0%)	0	0	1 (0.2%)	0.007
Anulus rupture	0	0	0	0	2 (0.4%)	0.257
Surgical conversion	0	1 (0.1%)	1 (0.7%)	2 (0.6%)	2 (0.4%)	0.576
Coronary occlusion	0	1 (0.1%)	0	0	2 (0.4%)	0.590
Myocardial infarction	0	1 (0.1%)	0	0	1 (0.2%)	0.873
Pericardial tamponade	1 (0.4%)	2 (0.3%)	3 (2.0%)	2 (0.6%)	8 (1.5%)	0.069
Aortic dissection	0	3 (0.4%)	0	3 (0.9%)	2 (0.4%)	0.492
Major vascular complication	7 (3.0%)	25 (3.6%)	5 (3.3%)	11 (3.2%)	21 (3.9%)	0.969
Major bleeding	8 (3.4%)	39 (5.6%)	5 (3.3%)	8 (2.3%)	43 (8.0%)	0.002

Table 2. Procedural features at unadjusted analysis.

and colleagues showed that Sapien3 may be associated with lower surgical conversion rates, fewer strokes and permanent pacemaker implantations (PPI), but more bleedings than Evolut⁵, whereas Pagnesi *et al.* have reported similar short-term results with Acurate and Evolut⁴. Other comparative analyses have provided hints at other possible differences as well^{7–9}. Of course, ongoing randomized trials will provide more accurate outcome data, but in the meanwhile, we aimed to inform clinicians and patients on the short-term comparative effectiveness and safety of 5 leading TAVI devices using the clinical data prospectively collected in the Registro Italiano GISE sull’impianto di Valvola Aortica Percutanea (RISPEVA) study¹⁰.

Feature	Acurate	Evolut	Lotus	Portico	Sapien3	P
Patients	234	703	151	347	541	—
Clinical outcomes						
Major adverse event*	60 (25.6%)	135 (19.2%)	24 (15.9%)	40 (11.5%)	131 (24.2%)	<0.001
Death	4 (1.7%)	11 (1.6%)	4 (2.7%)	8 (2.3%)	8 (1.5%)	0.794
Cardiac death	1 (0.4%)	4 (0.6%)	3 (2.0%)	2 (0.6%)	6 (1.1%)	0.357
Surgical aortic valve replacement	0	1 (0.1%)	1 (0.7%)	3 (0.9%)	2 (0.4%)	0.320
Valve thrombosis	0	2 (0.3%)	0	0	1 (0.2%)	0.742
Valve degeneration	0	0	0	0	0	1
Endocarditis	0	0	0	0	0	1
Coronary occlusion	0	1 (0.1%)	0	0	2 (0.4%)	0.590
Myocardial infarction	0	2 (0.3%)	0	0	2 (0.4%)	0.650
Pericardial effusion	12 (5.1%)	27 (3.8%)	6 (4.0%)	8 (2.3%)	46 (8.5%)	<0.001
Stroke	1 (0.4%)	12 (1.7%)	4 (2.7%)	2 (0.6%)	7 (1.3%)	0.216
Transient ischemic attack	0	2 (0.3%)	0	1 (0.3%)	0	0.618
Stroke or transient ischemic attack	1 (0.4%)	13 (1.9%)	4 (2.7%)	3 (0.9%)	7 (1.3%)	0.283
Major vascular complication	33 (14.1%)	61 (8.7%)	8 (5.3%)	17 (4.9%)	68 (12.6%)	<0.001
Amputation	0	0	0	0	0	1
Major bleeding	10 (4.3%)	20 (2.8%)	7 (4.6%)	9 (2.6%)	27 (5.0%)	0.218
Renal failure	26 (11.1%)	63 (9.0%)	9 (6.0%)	16 (4.6%)	47 (8.7%)	0.035
Permanent pacemaker	13 (5.6%)	122 (17.4%)	35 (23.2%)	42 (12.1%)	72 (13.3%)	<0.001
Echocardiographic outcomes						
Left ventricular end-diastolic diameter (mm)	45.6 ± 9.3	49.2 ± 10.5	49.6 ± 8.1	46.7 ± 6.9	49.1 ± 8.5	0.002
Left ventricular end-systolic diameter (mm)	32.1 ± 8.2	32.3 ± 10.5	33.2 ± 9.5	31.6 ± 8.0	32.1 ± 11.5	0.971
Left ventricular ejection fraction (%)	55.2 ± 9.5	53.3 ± 9.6	52.9 ± 10.4	54.2 ± 9.1	53.2 ± 9.2	0.051
Peak aortic gradient (mm Hg)	16.0 ± 9.5	15.3 ± 7.9	19.6 ± 14.0	18.2 ± 13.2	21.6 ± 11.5	<0.001
Mean aortic gradient (mm Hg)	9.2 ± 0.4.4	8.2 ± 4.6	12.1 ± 5.4	9.4 ± 6.1	11.6 ± 5.1	<0.001
Aortic valve area (mm ²)	1.17 ± 0.47	1.43 ± 0.49	1.28 ± 0.37	1.04 ± 0.47	1.37 ± 0.47	<0.001
Aortic regurgitation						<0.001
None	44 (20.9%)	207 (35.3%)	91 (67.4%)	133 (44.5%)	240 (50.0%)	
1+	135 (64.0%)	309 (52.7%)	40 (29.6%)	139 (46.5%)	224 (46.7%)	
2+	32 (15.2%)	66 (11.3%)	4 (3.0%)	26 (8.7%)	16 (3.3%)	
3+	0	4 (0.7%)	0	1 (0.3%)	0	
4+	0	0	0	0	0	
Mitral regurgitation						<0.001
None	12 (5.2%)	42 (7.0%)	6 (4.2%)	20 (6.0%)	21 (4.0%)	
1+	131 (57.2%)	367 (61.0%)	87 (60.4%)	199 (59.8%)	263 (50.3%)	
2+	64 (28.0%)	37 (6.2%)	42 (29.2%)	86 (25.8%)	193 (36.9%)	
3+	15 (6.6%)	140 (23.3%)	8 (5.6%)	20 (6.0%)	36 (6.9%)	
4+	7 (3.1%)	16 (2.7%)	1 (0.7%)	8 (2.4%)	10 (1.9%)	
Systolic pulmonary artery pressure (mm Hg)	36.7 ± 11.8	38.1 ± 15.0	38.2 ± 11.9	37.8 ± 11.0	35.5 ± 9.5	0.052

Table 3. One-month outcomes at unadjusted analysis. *Composite of death, stroke, myocardial infarction, major vascular complication, major bleeding, or renal failure.

Methods

Design. The RISPEVA Study has been previously described in detail elsewhere^{10–12}. Briefly, RISPEVA was a national prospective observational study focusing on TAVI conducted in several Italian centers. All methods were carried out in accordance with relevant guidelines and regulations. All experimental protocols were approved by the institutional ethics committee of: Policlinico San Donato, San Donato Milanese, Milan; Pineta Grande Hospital, Castel Volturno; Policlinico Santa Maria alle Scotte, Siena; Fondazione C.N.R. G. Monasterio Ospedale del Cuore, Massa; Humanitas University, Rozzano; Fondazione Policlinico Universitario A. Gemelli IRCCS, Rome; University of Catania, Catania; Spedali Civili di Brescia, Brescia; University of Pisa, Pisa; University of Turin, Turin; Ospedale Niguarda Ca' Granda, Milan; Clinica Montevergine, Avellino; Centro Cardiologico Monzino, Milan; Anthea Hospital GVM Care&Research, Bari; Sapienza University of Rome-Policlinico Umberto I, Rome; “SS Antonio e Biagio e Cesare Arrigo” Hospital, Alessandria; Maria Pia Hospital, Turin; San Giovanni di Dio e Ruggi d’Aragona, Salerno; Ospedale di Lecco, Lecco; Azienda Ospedaliera Universitaria di Parma, Parma; Policlinico Universitario Mater Domini, Catanzaro; IRCCS San Martino, Genova; Ospedale Bolognini, Seriate; Ospedale Civile di Legnano, Legnano; Ospedale S. Chiara, Trento; Istituto Clinico San Rocco, Ome; Fondazione Poliambulanza, Brescia; Maria Cecilia Hospital, Cotignola; European Hospital, Rome (all in Italy). Written

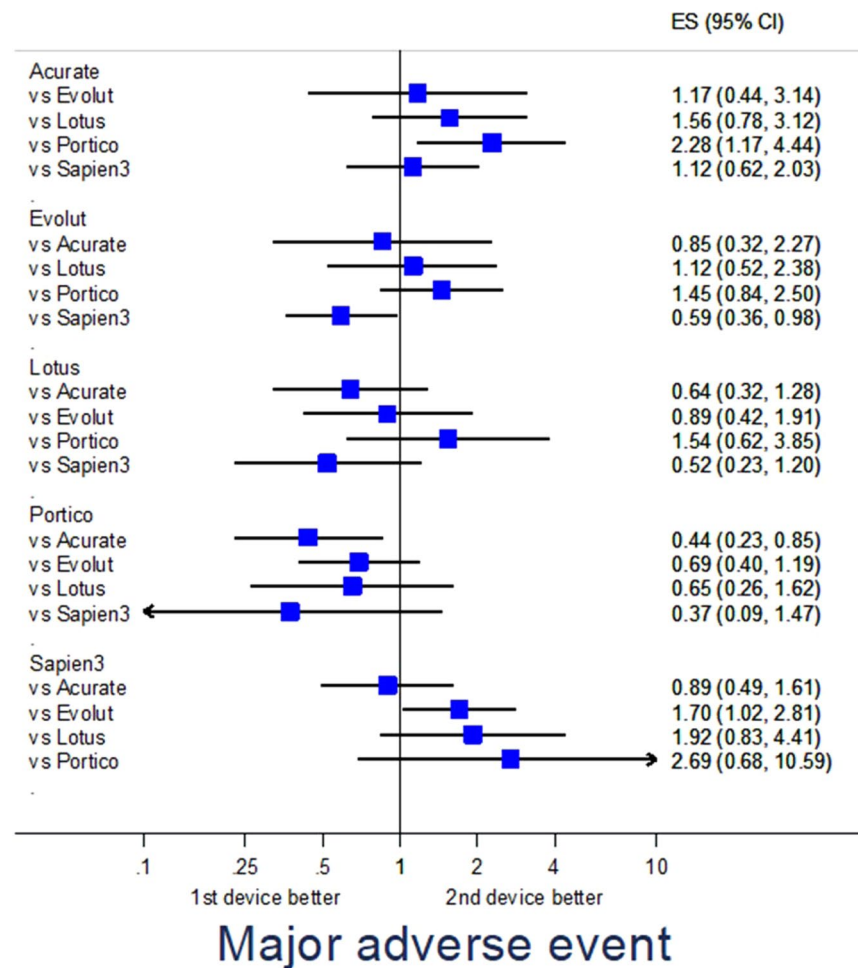


Figure 1. Forest plot of propensity score-adjusted analysis for major adverse events (composite of death, stroke, myocardial infarction, major vascular complication, major bleeding, or renal failure).

informed consent was obtained from all subjects. Additional details are also available in the online registration module on clinicaltrials.gov (NCT02713932).

Aims. The main aim of this RISPEVA subanalysis was to compare patients undergoing attempted implantation of Acurate, Evolut, Lotus, Portico, or Sapien3 devices, focusing on short-term (procedural, peri-procedural, and 1-month) outcomes. Labelling was based on attempt to deliver and/or deploy a specific device, and not necessarily on eventually successful implantation.

Patients, procedures, definitions. Details on patient and procedures in the RISPEVA Study have also been detailed previously. Briefly, all patients in whom TAVI was attempted at participating centers and willing to provide consent were offered inclusion in the study, without any additional selection criterion. Several baseline, procedural and outcome variables were collected in a dedicated electronic case report form. Procedural outcomes included: contrast volume, fluoroscopy time, procedural time, device success, procedural success, death, valve migration, annulus rupture, surgical conversion, coronary occlusion, myocardial infarction, pericardial tamponade, aortic dissection, major vascular complication, and major bleeding. Follow-up assessments were planned at 1 month after TAVI and subsequently. In particular, details on the following clinically relevant outcomes were systematically collected: death, cardiac death, surgical aortic valve replacement, valve thrombosis, valve degeneration, endocarditis, coronary occlusion, myocardial infarction, pericardial effusion, stroke, transient ischemic attack, major vascular complication, amputation, major bleeding, renal failure, and PPI. Echocardiographic assessment was routinely performed at admission, at discharge, and at 1-month, focusing on the following endpoints: left ventricular end-diastolic diameter (LVEDD), left ventricular end-systolic diameter (LVESD), left ventricular ejection fraction (LVEF), peak aortic gradient, mean aortic gradient, aortic valve area, aortic regurgitation, mitral regurgitation, and systolic pulmonary artery pressure (SPAP). Major adverse events, a composite of death, stroke, myocardial infarction, major vascular complication, major bleeding, or renal failure, were also computed. All definitions originated by the current Valve Academic Research Consortium recommendations¹³.

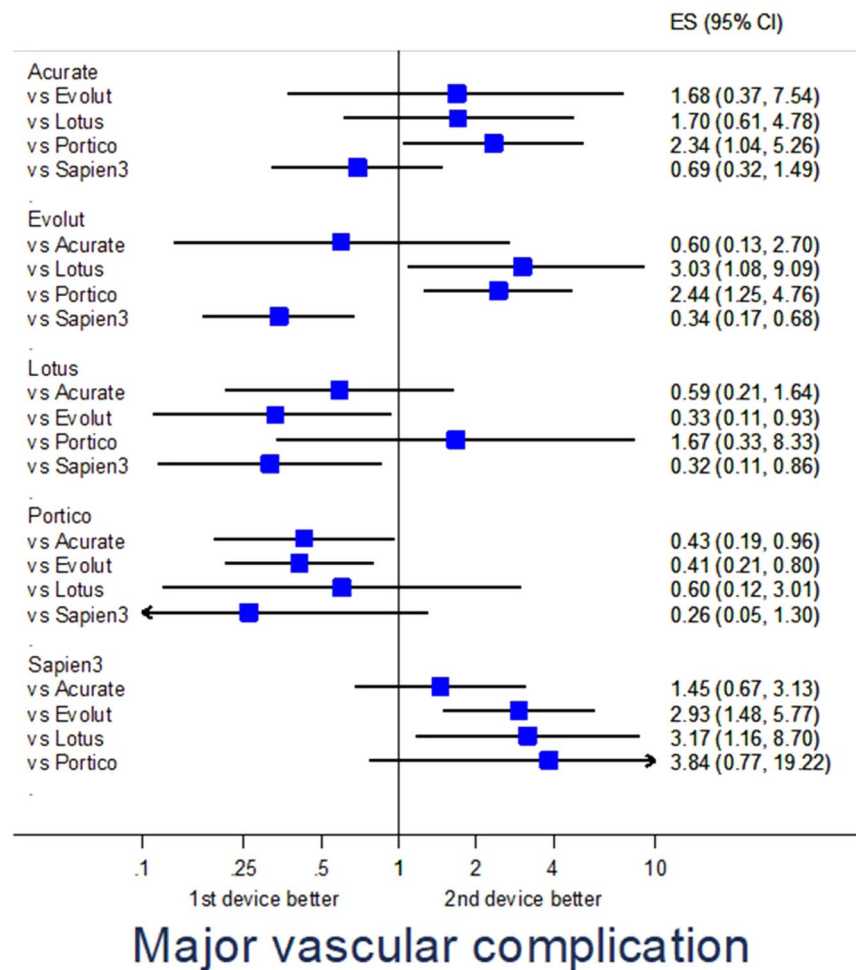


Figure 2. Forest plot of propensity score-adjusted analysis for major vascular complication.

Statistical analysis. Continuous variables are reported as mean \pm standard deviation, and categorical variables as count (%). Unadjusted analysis was based on analysis of variance for continuous variables and chi² test for categorical variables. Adjusted analysis was based on propensity score adjusted generalized linear models with default link for continuous variables and binomial likelihood for binary variables, using missing data imputation when appropriate. Pairwise propensity scores were generated using several baseline and procedural variables (Online supplement). Statistical significance for hypothesis testing was set at the two-tailed 0.05 level, without multiplicity adjustment. Computations were performed with Stata 13 (StataCorp, College Station, TX).

Results

Baseline features. A total of 1976 patients were included, who underwent TAVI between 2012 and 2018, mostly in 7 high volume centers (Table S1): 234 (11.8%) treated with Acurate, 703 (35.6%) with Evolut, 151 (7.6%) with Lotus, 347 (17.6%) with Portico, and 541 (27.4%) with Sapien3. Baseline features are provided in Table 1, with additional details in Table S1. Several differences in baseline features, with complex patterns in favor or against a given device, were found (Fig. S1). Specifically, there were significant differences in age, gender (with more females receiving Acurate and Portico), height, BMI, diagnosis, risk (with more inoperable patients receiving Evolut), Logistic EuroSCORE (with lower values in those receiving Acurate), EuroSCORE II, and STS score (all $p < 0.05$). Similarly, significant differences were found in NYHA class, prior valvuloplasty, peak aortic gradient, aortic valve area, aortic regurgitation, porcelain aorta, family history of CAD, hypertension, current smoking, prior CAD, angiographic CAD, prior acute pulmonary edema, prior myocardial infarction, prior percutaneous coronary intervention, syncope, carotid artery disease, peripheral artery disease, systolic blood pressure, diastolic blood pressure, hematocrit, oxygen dependency, prior cancer, LVEDV, LVESV, bicuspid aortic valve, and ilio-femoral tortuosity (all $p < 0.05$).

Procedural features. Procedural characteristics were also different in many domains (Table 2), including local anesthesia, transesophageal guidance, femoral access, sheathless procedure, sheath size, embolic protection device, right ventricular pacing, predilation, predilation balloon diameter, predilation balloon type, prostheses number, device size, pacing during implant, pacing rate, postdilation, postdilation balloon diameter, and

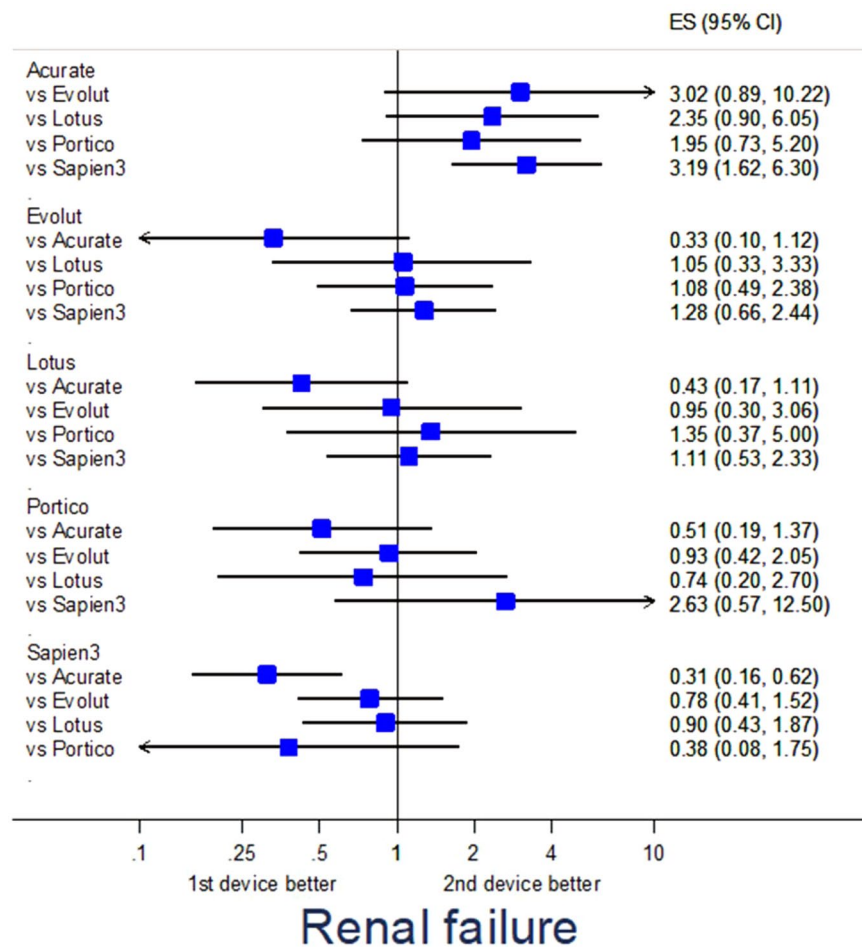


Figure 3. Forest plot of propensity score-adjusted analysis for renal failure.

postdilation balloon diameter (all $p < 0.05$). In particular, transesophageal guidance was less common with Evolut and Sapien3, smaller balloons were used with Lotus, pacing was more common with Evolut and Sapien3, and postdilation less prevalent with Lotus and Sapien3 (all $p < 0.05$). Despite such differences, procedural and device success were both very high, ranging between 98% and 99%, and non-significantly different across devices. Similarly, unadjusted procedural rates of death, anulus rupture, surgical conversion, coronary occlusion, myocardial infarction, pericardial tamponade, aortic dissection, or major vascular complications were all similar (all $p > 0.05$), whereas valve migration was more common with Acurate, and major bleeding with Sapien3 (both $p < 0.05$).

Unadjusted analysis for one-month outcomes. Most one-month outcomes were similar across devices (Table 3), including death, cardiac death, surgical aortic valve replacement, valve thrombosis, valve degeneration, endocarditis, coronary occlusion, myocardial infarction, stroke, transient ischemic attack, amputation, and major bleeding (all $p > 0.05$). However, significant differences were found for major adverse events ($p < 0.001$, with lowest rates for Portico), pericardial effusion ($p < 0.001$, with lowest rates for Portico), major vascular complication ($p < 0.001$, with lowest rates for Portico), and PPI ($p < 0.001$, with lowest rates for Acurate). Echocardiographic follow-up showed differences in LVEDD, peak aortic gradient, mean aortic gradient, aortic valve area, aortic regurgitation, and mitral regurgitation (all $p < 0.05$).

Adjusted analysis. Propensity score-adjusted analysis for selected endpoints is provided in Table S3. Specifically, major adverse events were fewest with Evolut ($p = 0.040$ vs Sapien3) and Portico ($p = 0.016$ vs Acurate) (Fig. 1), major vascular complications were less common with Evolut ($p = 0.036$ vs Lotus, $p = 0.002$ vs Sapien3), Lotus ($p = 0.024$ vs Sapien3), and Portico ($p = 0.040$ vs Acurate, $p = 0.010$ vs Evolut) (Fig. 2), renal failure was less frequent with Sapien3 ($p = 0.001$ vs Acurate) (Fig. 3), and PPI was less common with Acurate ($p = 0.002$ vs Evolut, $p < 0.001$ vs Lotus, $p = 0.043$ vs Sapien3) (Fig. 4).

Adjusted analysis for echocardiographic features suggested lower mean aortic gradients with Acurate ($p = 0.002$ vs Lotus, $p = 0.023$ vs Sapien3), Evolut ($p < 0.001$ vs Lotus, $p < 0.001$ vs Sapien3), and Portico ($p = 0.033$ vs Lotus, $p = 0.043$ vs Sapien3), less aortic regurgitation $\geq 2 + /4+$ with Sapien3 ($p = 0.045$ vs Acurate,

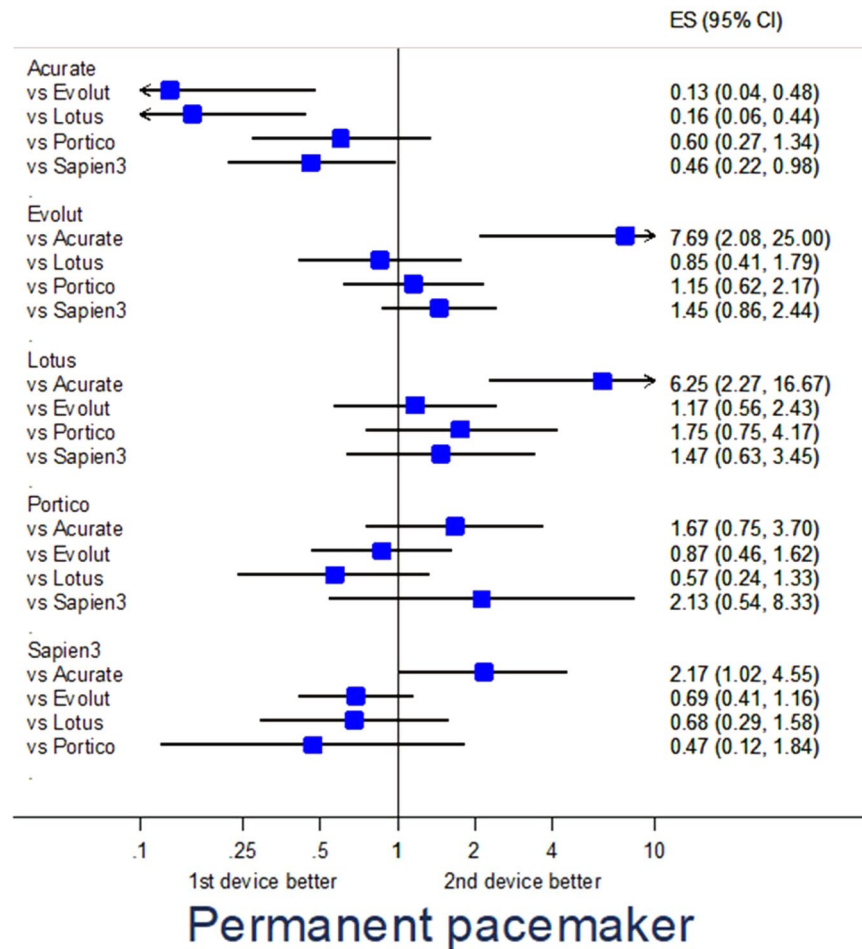


Figure 4. Forest plot of propensity score-adjusted analysis for permanent pacemaker implantation.

$p = 0.030$ vs Evolut, $p = 0.017$ vs Portico) and Lotus ($p = 0.025$ vs Acurate), and less mitral regurgitation with Evolut ($p = 0.017$ vs Portico, $p < 0.001$ vs Sapien3) (Fig. 5).

Additional analysis. For exploratory purposes, we also appraised the impact of overall TAVI experience per center, as well as device-specific experience (Tables S4; S5). At unadjusted analysis using tertiles, institutions at high overall volume showed lower rates of major adverse events, death, and myocardial infarction than other centers (all $p < 0.05$), whereas PPI appeared less common in low volume institutions ($p = 0.009$). Device-specific experience did not seem associated with significant differences in outcomes, with the notable exception of the risk of death with Lotus, which appeared higher in institutions less experienced with this device ($p = 0.010$).

Additional sensitivity inferential analyses were conducted forcing in the propensity score-adjusted model overall and device-specific experience (Table S6). These analyses, albeit limited by multiplicity issues, suggested that in more experienced settings Portico outperformed Acurate ($p = 0.012$) and Evolut proved better than Sapien3 ($p = 0.045$). Focusing on device-specific institutional experience, Portico proved better than Evolut in centers experienced with the latter device ($p = 0.015$), whereas in the same setting Evolut proved nonetheless better than Sapien3 ($p = 0.025$).

Discussion

Main findings. This analysis of the RISPEVA study focusing on short-term outcomes following TAVI with 5 leading new-generation devices, despite its mainly descriptive and hypothesis-generating scope, has the following implications: (a) centers and operators performing TAVI used different devices based on preference, training, experience, and patient features; (b) despite substantial differences in baseline and procedural features, ranging from age and gender to subtleties such as pacing or transesophageal guidance, rates of device and procedural success, as well as those of several procedural outcomes including death, appeared largely similar with Acurate, Evolut, Lotus, Portico and Sapien3; (c) accordingly, one-month outcomes appeared quite similar across devices, with encouraging results in terms of death ($< 3\%$ for all devices), as well as myocardial infarction, stroke and major bleeding; (d) differences were however apparent across devices for major vascular complications, renal failure and PPI; (e) propensity score-adjusted analysis confirmed such trends, highlighting that these devices may not be considered completely equivalent, and individualized decision making and device choice probably remain important to maximize the risk-benefit and cost-benefit profile of TAVI.

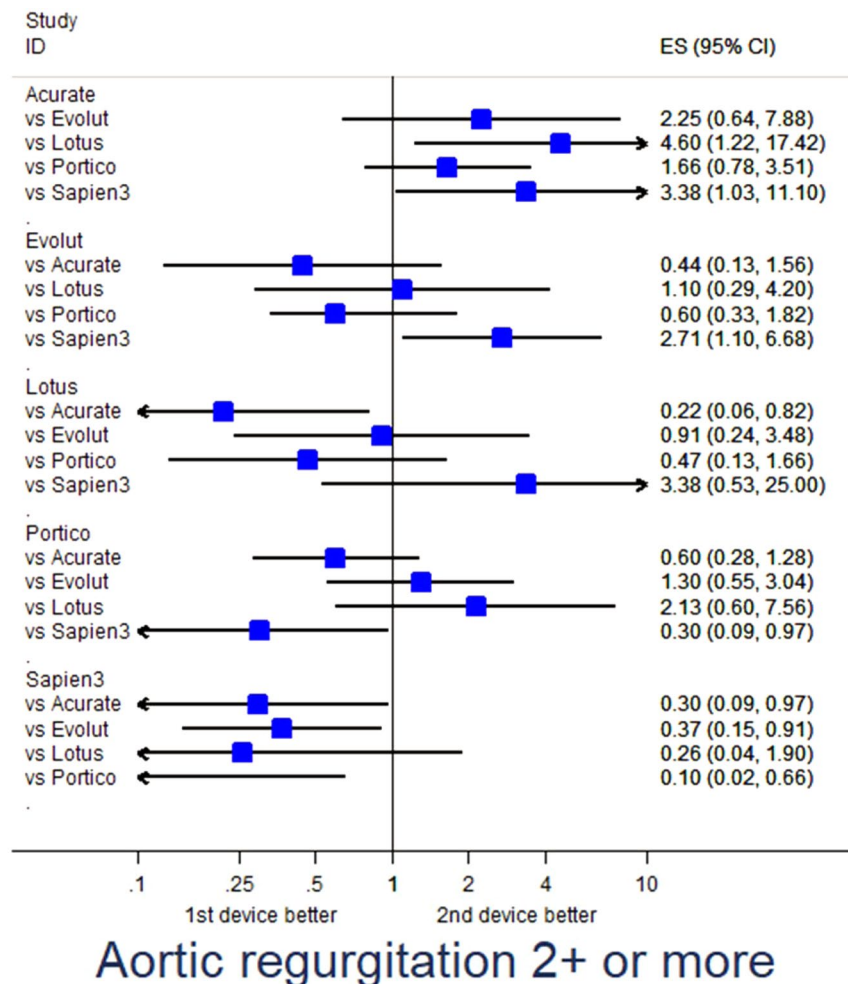


Figure 5. Forest plot of propensity score-adjusted analysis for aortic regurgitation implantation $\geq 2+$.

The present findings appear important and timely, and supplement recent ones by other investigators who aimed at comparing different TAVI devices¹. Overall, all recent reports reaffirm the safety of TAVI, confirming its established role in patients with aortic stenosis at intermediate to prohibitive surgical risk, and sustaining recent trials testing the role of TAVI in low risk patients^{2,3}. Indeed, major adverse events were quite uncommon, despite this being a pragmatic registry without any specific selection or exclusion criteria. Yet, uncertainty persists on the long-term durability of TAVI, especially in light of recent reports on valve deterioration and leaflet thrombosis (albeit typically silent)⁴⁻⁶. Indeed, structural valve degeneration occurred in 8.7% of patients receiving first-generation TAVI devices after a median follow-up of 5.8 years in the UK TAVI Registry, similar to the 4.8% estimate provided after 6 years of follow-up in the Nordic Aortic Valve Intervention (NOTION) trial^{4,15}. Accordingly, much emphasis must be given to the long-term comparative safety and efficacy of TAVI, especially when considering lower risk patients as potential candidates. Despite the ever accruing evidence base, operators are faced with novel devices or refinements of existing ones, with uncertainty on their incremental differences.

Context. Balloon-expandable devices have been originally considered superior to self-expandable devices in terms of PPI and aortic regurgitation rates, but were associated with higher rates of strokes and vascular complications, at least in some series or comparisons^{16,17}. More recent data support the existence of meaningful differences between Evolut and Sapien, between Evolut and Portico, and possibly between Lotus and Sapien^{9,12}. Furthermore, the temporary recall of Lotus depended on engineering issues likely of clinical impact, despite this device usefulness in minimizing aortic regurgitation, albeit at the potential expense of an increase in PPI rates. Other notices of caution or recalls have been recently issued for Sapien3. Thus, attentive focus on each device strengths and weaknesses is paramount. Indeed, in light of prior and recent comparative studies on new-generation TAVI devices as well as our own present ones, we may first infer that experienced operators who have confidence with a given device can obtain satisfactory results with any chosen product, but probably each institution should consider becoming familiar with at least two devices with different features, in order to maximize the benefit of individualized device choice, without compromising skills. Indeed, in keeping with our head-to-head comparisons, it appears that Portico and Evolut are associated with lower rates of major adverse events ($p = 0.016$ in favor of Portico when compared to Acurate; $p = 0.040$ in favor of Evolut when compared to Sapien3), Portico with

fewer vascular complications ($p < 0.05$ in its favor when compared to Acurate and Evolut), Sapien3 with fewer renal failures ($p = 0.001$ in its favor when compared to Acurate), and Acurate with lower PPI rates ($p < 0.05$ in its favor when compared to Evolut, Lotus, and Sapien3). Echocardiographic analyses showed lower gradients with Acurate, Evolut and Portico, with aortic regurgitation and paravalvular leak appearing less common with Lotus and Sapien3. Notably, mean echocardiographic gradients appeared superior in self-expandable valves than in mechanically or balloon-expandable valves irrespective of valve-anulus-height, with potentially detrimental impact on long-term durability.

Focusing on institutional experience with TAVI in general and with specific devices, we found intriguing hypothesis-generating data, suggesting that clinical outcomes are better in higher volume centers, except for PPI, whose rates may indeed depend on local management protocols. Focusing on specific devices, only Lotus seemed significantly dependant on experience. Furthermore, we found that overall and device-specific experience did not dilute significant differences between devices, with persistent evidence that Portico outperformed Acurate and Evolut, with the latter still having an edge in comparison to Sapien3. Yet, these findings, while intriguing, need confirmation in long-term follow-up from RISPEVA and, most importantly, from ongoing comparative randomized trials¹.

Limitations. On top of being limited by the non-randomized design, short-term follow-up, and reliance on propensity score adjustment, this study is limited by incomplete data collection for several ancillary baseline features such as frailty, absence of an imaging core lab, and lack of systematic endpoint adjudication. In addition, very few cases of TAVI with other devices such as Jena Valve or Allegra were collected, and these devices were thus excluded from analysis. Notably, residual confounding cannot be excluded and might drive some important differences, even after propensity score adjustment, such as for vascular complications. In addition, while we attempted at exploring the impact of institutional experience with TAVI in general and with specific devices as well, operator volume and experience was not collected in the case report form, and thus could not be analyzed.

Conclusion

New-generation TAVI devices have different profiles of early comparative safety and efficacy. These findings should be taken into account for individualized decision making and patient management.

Data availability

Anonymized data are available for external analysis from the corresponding author upon request.

Received: 19 July 2019; Accepted: 24 October 2019;

Published online: 19 November 2019

References

1. *Transcatheter Aortic Valve Implantation: Clinical, Interventional, and Surgical Perspectives* (eds Giordano, A., Biondi-Zoccai, G. & Frati, G.). (Springer Nature Publishing, 2019).
2. Mack, M. J. *et al.* Transcatheter Aortic-Valve Replacement with a Balloon-Expandable Valve in Low-Risk Patients. *N. Engl. J. Med.* **380**, 1695–1705 (2019).
3. Popma, J. J. *et al.* Transcatheter Aortic-Valve Replacement with a Self-Expanding Valve in Low-Risk Patients. *N. Engl. J. Med.* **380**, 1706–1715 (2019).
4. Pagnesi, M. *et al.* Transcatheter Aortic Valve Replacement With Next-Generation Self-Expanding Devices: A Multicenter, Retrospective, Propensity-Matched Comparison of Evolut PRO Versus Acurate neo Transcatheter Heart Valves. *JACC Cardiovasc Interv* **12**, 433–443 (2019).
5. Jagielak, D. *et al.* Transfemoral aortic valve implantation using self-expanding New Valve Technology (NVT) Allegra bioprosthesis: A pilot prospective study. *Cardiol. J.* <https://doi.org/10.5603/CJ.a2019.0019> (2019).
6. Vlastra, W. *et al.* Comparison of balloon-expandable vs. self-expandable valves in patients undergoing transfemoral transcatheter aortic valve implantation: from the CENTER-collaboration. *Eur. Heart J.* **40**, 456–465 (2019).
7. Abdel-Wahab, M. *et al.* Comparison of balloon-expandable vs self-expandable valves in patients undergoing transcatheter aortic valve replacement: the CHOICE randomized clinical trial. *JAMA* **311**, 1503–1514 (2014).
8. Chieffo, A. *et al.* Transcatheter aortic valve implantation with the Edwards SAPIEN versus the Medtronic CoreValve Revalving system devices: a multicenter collaborative study: the PRAGMATIC Plus Initiative (Pooled-Rotterdam-Milano-Toulouse In Collaboration). *J. Am. Coll. Cardiol.* **61**, 830–836 (2013).
9. Biondi-Zoccai, G. *et al.* Network meta-analysis on the comparative effectiveness and safety of transcatheter aortic valve implantation with CoreValve or Sapien devices versus surgical replacement. *Heart Lung Vessel* **6**, 232–243 (2014).
10. Giordano, A. *et al.* Patterns and trends of transcatheter aortic valve implantation in Italy: insights from RISPEVA. *J. Cardiovasc. Med. (Hagerstown)* **18**, 96–102 (2017).
11. Giordano, A. *et al.* Impact of predilation before transcatheter aortic valve implantation with new-generation devices. *Cardiovasc. Revasc. Med.* <https://doi.org/10.1016/j.carrev.2019.01.017> (2019).
12. Giordano, A. *et al.* Propensity-score-adjusted comparison of Evolut vs. Portico devices for transcatheter aortic valve implantation. *J. Cardiovasc. Med. (Hagerstown)* **20**, 351–357 (2019).
13. Kappetein, A. P. *et al.* Updated standardized endpoint definitions for transcatheter aortic valve implantation: the Valve Academic Research Consortium-2 consensus document. *Eur. Heart J.* **33**, 2403–2418 (2012).
14. Blackman, D. J. *et al.* Long-Term Durability of Transcatheter Aortic Valve Prostheses. *J. Am. Coll. Cardiol.* **73**, 537–545 (2019).
15. Søndergaard, L. *et al.* Durability of Transcatheter and Surgical Bioprosthetic Aortic Valves in Patients at Lower Surgical Risk. *J. Am. Coll. Cardiol.* **73**, 546–553 (2019).
16. Gatto, L. *et al.* New-generation devices for transcatheter aortic valve implantation. *Minerva Cardioangiologica*. **66**, 747–761 (2018).
17. Morello, A. *et al.* Complications After Transcatheter Aortic Valve Implantation: an Updated Umbrella Review. *Curr. Emerg. Hosp. Med. Rep.* <https://doi.org/10.1007/s40138-019-00202-4> (2019).

Acknowledgements

The RISPEVA study was supported by unrestricted grants from Edwards Lifesciences and Medtronic.

Author contributions

Drs Giordano and Biondi-Zoccai have designed the study, performed the analyses, and drafted the manuscript. Drs Corcione, Ferraro, Morello, Conte, Testa, Bedogni, Iadanza, Berti, Regazzoli, Romagnoli, Trani, Burzotta, Pepe, and Frati, participated in data acquisition, interpretation of results, and critical manuscript revision. Drs Corcione, Ferraro, Morello, Conte, Testa, Bedogni, Iadanza, Berti, Regazzoli, Romagnoli, Trani, Burzotta, Pepe, and Frati participated in study design, data collection and result interpretation, and revised the manuscript for important intellectual content. All authors eventually approved the final version of the manuscript.

Competing interests

All authors have approved the submitted version of the manuscript, and have agreed both to be personally accountable for the author's own contributions and to ensure that questions related to the accuracy or integrity of any part of the work, even ones in which the author was not personally involved, are appropriately investigated, resolved, and the resolution documented in the literature. Prof. Biondi-Zoccai has consulted for Abbott Vascular and Bayer. The remaining authors have nothing to disclose.

Additional information

Supplementary information is available for this paper at <https://doi.org/10.1038/s41598-019-53081-w>.

Correspondence and requests for materials should be addressed to G.B.-Z.

Reprints and permissions information is available at www.nature.com/reprints.

Publisher's note Springer Nature remains neutral with regard to jurisdictional claims in published maps and institutional affiliations.



Open Access This article is licensed under a Creative Commons Attribution 4.0 International License, which permits use, sharing, adaptation, distribution and reproduction in any medium or format, as long as you give appropriate credit to the original author(s) and the source, provide a link to the Creative Commons license, and indicate if changes were made. The images or other third party material in this article are included in the article's Creative Commons license, unless indicated otherwise in a credit line to the material. If material is not included in the article's Creative Commons license and your intended use is not permitted by statutory regulation or exceeds the permitted use, you will need to obtain permission directly from the copyright holder. To view a copy of this license, visit <http://creativecommons.org/licenses/by/4.0/>.

© The Author(s) 2019

Consortia

The Registro Italiano GISE sull'impianto di Valvola Aortica Percutanea (RISPEVA) Study Investigators

Corrado Tamburino¹², Federica Etori¹³, Anna Sonia Petronio¹⁴, Mauro Rinaldi¹⁵, Silvio Klugmann¹⁶, Paolo Rubino¹⁷, Elena Tremoli¹⁸, Alfredo Marchese¹⁹, Gennaro Sardella²⁰, Gianfranco Pistis²¹, Elvis Brscic²², Pietro Giudice²³, Luigi Piatti²⁴, Diego Ardissino²⁵, Ciro Indolfi²⁶, Francesco Chiarella²⁷, Maurizio Tespili²⁸, Stefano De Servi²⁹, Roberto Bonmassari³⁰, Antonio Fappani³¹, Claudio Cuccia³², Alberto Cremonesi³³ & Fabrizio Tomai³⁴

¹²University of Catania, Catania, Italy. ¹³Spedali Civili di Brescia, Brescia, Italy. ¹⁴University of Pisa, Pisa, Italy. ¹⁵University of Turin, Turin, Italy. ¹⁶Ospedale Niguarda Ca' Granda, Milan, Italy. ¹⁷Clinica Montevergine, Avellino, Italy. ¹⁸Centro Cardiologico Monzino, Milan, Italy. ¹⁹Anthea Hospital GVM Care&Research, Bari, Italy. ²⁰Sapienza University of Rome-Policlinico Umberto I, Rome, Italy. ²¹"SS Antonio e Biagio e Cesare Arrigo" Hospital, Alessandria, Italy. ²²Maria Pia Hospital, Turin, Italy. ²³San Giovanni di Dio e Ruggi d'Aragona, Salerno, Italy. ²⁴Ospedale di Lecco, Lecco, Italy. ²⁵Azienda Ospedaliera Universitaria di Parma, Parma, Italy. ²⁶Policlinico Universitario Mater Domini, Catanzaro, Italy. ²⁷IRCCS San Martino, Genova, Italy. ²⁸Ospedale Bolognini, Seriate, Italy. ²⁹Ospedale Civile di Legnano, Legnano, Italy. ³⁰Ospedale S. Chiara, Trento, Italy. ³¹Istituto Clinico San Rocco, Ome, Italy. ³²Fondazione Poliambulanza, Brescia, Italy. ³³Maria Cecilia Hospital, Cotignola, Italy. ³⁴European Hospital, Rome, Italy.