



3D in vitro morphogenesis of human intestinal epithelium in a gut-on-a-chip or a hybrid chip with a cell culture insert

Woojung Shin^{1,4} and Hyun Jung Kim^{1,2,3}✉

Human intestinal morphogenesis establishes 3D epithelial microarchitecture and spatially organized crypt-villus characteristics. This unique structure is necessary to maintain intestinal homeostasis by protecting the stem cell niche in the basal crypt from exogenous microbial antigens and their metabolites. Also, intestinal villi and secretory mucus present functionally differentiated epithelial cells with a protective barrier at the intestinal mucosal surface. Thus, re-creating the 3D epithelial structure is critical to building in vitro intestine models. Notably, an organomimetic gut-on-a-chip can induce spontaneous 3D morphogenesis of an intestinal epithelium with enhanced physiological function and biomechanics. Here we provide a reproducible protocol to robustly induce intestinal morphogenesis in a microfluidic gut-on-a-chip as well as in a Transwell-embedded hybrid chip. We describe detailed methods for device fabrication, culture of Caco-2 or intestinal organoid epithelial cells in conventional setups as well as on microfluidic platforms, induction of 3D morphogenesis and characterization of established 3D epithelium using multiple imaging modalities. This protocol enables the regeneration of functional intestinal microarchitecture by controlling basolateral fluid flow within 5 d. Our in vitro morphogenesis method employs physiologically relevant shear stress and mechanical motions, and does not require complex cellular engineering or manipulation, which may be advantageous over other existing techniques. We envision that our proposed protocol may have a broad impact on biomedical research communities, providing a method to regenerate in vitro 3D intestinal epithelial layers for biomedical, clinical and pharmaceutical applications.

Introduction

Development of the protocol

It has been experimentally demonstrated that intestinal epithelial Caco-2 cells cultured in a gut-on-a-chip^{1–5} or in a bilayered microfluidic device^{6,7} can undergo spontaneous 3D morphogenesis in vitro without a clear understanding of the underlying mechanism. In our recent study, we identified that the removal of morphogen antagonists that are basolaterally secreted from the culture setup is necessary and sufficient to induce 3D epithelial morphogenesis in vitro, verified with both Caco-2 and patient-derived intestinal organoid epithelia⁴. In this study, we specifically focused on the cellular production and concentration profile of a potent Wnt antagonist, Dickkopf-1 (DKK-1), in both gut-on-a-chip and a modified microfluidic device that contains a Transwell insert, called a ‘hybrid chip’. We confirmed that exogenous additions of Wnt antagonists (e.g., DKK-1, Wnt inhibitory factor 1, secreted frizzled-related protein 1 or Soggy-1) into a gut-on-a-chip result in the inhibition of morphogenesis or the disruption of prestructured 3D epithelial layers, suggesting that the antagonistic pressure during the culture is responsible for intestinal morphogenesis in vitro. Thus, practical approaches for robust morphogenesis on an epithelial interface are to either remove or minimally maintain the level of Wnt antagonists in the basolateral compartment by actively washing away (e.g., in the gut-on-a-chip or hybrid chip platforms) or diffusing the basolateral culture broth (e.g., from the Transwell insert to a large basolateral reservoir in the well).

In this protocol, we provide detailed methods for fabricating a gut-on-a-chip microdevice and a Transwell-insertable hybrid chip (Steps 1–5), culturing intestinal epithelial cells on either a polydimethylsiloxane (PDMS)-based porous membrane (Steps 6A, 7A, 8, 9) or the polyester membrane of a Transwell insert (Steps 6B, 7B, 8, 9), and inducing 3D morphogenesis in vitro (Step 10). We also

¹Department of Biomedical Engineering, The University of Texas at Austin, Austin, TX, USA. ²Department of Oncology, Dell Medical School, The University of Texas at Austin, Austin, TX, USA. ³Department of Medical Engineering, College of Medicine, Yonsei University, Seoul, Republic of Korea. ⁴Present address: Wyss Institute for Biologically Inspired Engineering at Harvard University, Boston, MA, USA. ✉e-mail: hyunjung.kim@utexas.edu

identify cellular and molecular characteristics that are indicative of tissue-specific histogenesis and lineage-dependent cytodifferentiation by applying multiple imaging modalities (Steps 11–24). We induce morphogenesis using human intestinal epithelial cells such as Caco-2, or intestinal organoids, in both culture formats with technical details including surface modification of a porous membrane, creation of a 2D monolayer and recapitulation of the biochemical and biomechanical micro-environment of the gut in vitro. To induce 3D morphogenesis from a 2D epithelial monolayer, we remove morphogen antagonists in both culture formats by flowing culture medium into the basolateral compartment of the cultures. Finally, we provide representative examples of the utility of the regenerative 3D epithelial layers that can potentially be used for simulating morphogen-dependent epithelial growth, longitudinal host–microbiome co-cultures, pathogen infection, inflammatory injury, epithelial barrier dysfunctions and probiotic-based therapeutic effect.

Applications of the method

Our protocol can potentially provide a broad impact to a wide spectrum of scientists in both basic (e.g., intestinal mucosal biology, stem cell biology and developmental biology) and applied research (e.g., preclinical drug testing, disease modeling, tissue engineering and gastroenterology). Since our protocol is reproducible and robust to induce 3D morphogenesis of an intestinal epithelium in vitro, we envision that our technical strategy can be disseminated to audiences who study the dynamics of cellular signaling during intestinal development, regeneration or homeostasis. Also, our protocol can be useful for audiences who interrogate mechanisms of disease pathology and pathogenesis under various infectious agents such as norovirus⁸, severe acute respiratory syndrome coronavirus 2 (SARS-CoV-2), *Clostridioides difficile*, *Salmonella enterica* Typhimurium⁹ or *Vibrio cholerae*. The use of the gut-on-a-chip microphysiological system can potentially allow a longitudinal co-culture¹⁰ and subsequent assessments of host defense, immune response and pathogen-associated damage repair in the gastrointestinal (GI) tract¹¹. Other GI diseases that involve villous atrophy, crypt shortening, mucosal damage or impaired epithelial barrier germane to leaky gut syndrome, celiac disease, Crohn's disease, ulcerative colitis, pouchitis or irritable bowel syndrome can be emulated when a 3D intestinal epithelial layer is prepared using patient's biopsy- or stem-cell-derived intestinal organoids^{12,13}. To better mimic a higher complexity of a disease milieu, readers can contemplate adding disease-relevant cell types such as tissue-specific immune cells derived from a patient's peripheral blood mononuclear cells (PBMCs) in the model that contains 3D intestinal villus–crypt microarchitecture^{3,5}.

Since the 3D epithelial microstructure can be fixed and visualized without a sectioning process, audiences who work on spatial transcriptomics and high- or super-resolution imaging may potentially be interested in our technique to map the spatiotemporal dynamics of genes and proteins on the epithelial niche in response to microbial or immune stimulations. In addition, longitudinal host–microbiome crosstalk that orchestrates intestinal homeostasis can be established in a 3D intestinal mucosal layer^{10,14}, especially in the gut-on-a-chip platform, by co-culturing various microbial species, microbial communities or fecal microbiota. This approach will be particularly compelling to audiences who study mucosal immunology, gastroenterology, human microbiome, culturomics with an effort to culture previously uncultured gut microbiota in laboratories, and clinical microbiology. If our in vitro morphogenesis protocol can be adapted to a scalable culture format such as multiwell porous inserts in a 24-, 96- or 384-well plate that can continuously replenish the basolateral compartment, the protocol can be also disseminated to audiences who develop a high-throughput screening or a validation platform in the pharmaceutical, biomedical or food industries. As a proof-of-principle, we recently demonstrated the feasibility of a multiplex high-throughput morphogenesis system scalable to a 24-well plate format¹⁵. In addition, multiple organ-on-a-chip products have been commercialized^{16–18}. Hence, the validation of our in vitro morphogenesis method can be accelerated and potentially adopted in many research laboratories, industries or government and regulatory agencies to understand cellular reprogramming of in vitro intestinal morphogenesis at the transcriptome level¹⁹, to test absorption and transport of pharmaceutical or biotherapeutic candidates using the 3D gut surrogates or to assess reproducibility of the intestinal morphogenic process using customized or commercialized organ-on-a-chip models.

Comparison with other methods

A limited number of human-relevant experimental models have been utilized to study intestinal epithelial morphogenesis, mainly because of a lack of implementable protocol to induce in vitro 3D morphogenesis. Indeed, a majority of the current knowledge on intestinal morphogenesis is based on

animal studies (e.g., zebrafish²⁰, mouse²¹ or chicken²²). However, they are labor and cost intensive, may be ethically questionable and, most importantly, do not accurately dictate the developmental process in humans. These models are also substantially limited for testing in a multiplex scalable way. Thus, our protocol to regenerate a 3D tissue architecture *in vitro* is advantageous over *in vivo* animal models as well as other conventional static 2D cell culture models. As previously mentioned, utilizing a 3D epithelial structure allows us to examine the spatial localization of differentiated cells in a crypt–villus axis in response to various mucosal or immune stimulations. The 3D epithelial layer can provide a space to investigate how microbial cells compete to make a spatial niche and ecologically evolve in response to host factors (e.g., inner versus outer mucus layers, secretion of IgA and antimicrobial peptides). Furthermore, 3D epithelial morphology may allow us to understand how the gut microbiota structures their communities and synergistically produces microbial metabolites (e.g., short-chain fatty acids) that shape the cellular organization and stem cell niche in the basal crypt. These features can only be demonstrated when 3D epithelial layers are established *in vitro*.

There are a couple of *in vitro* approaches besides our method to create 3D intestinal epithelial structures. The intestinal organoid culture is the most advanced tissue engineering technique based on an intestinal stem cell culture under defined morphogen conditioning^{23–25}. However, it is often challenging to use the 3D organoid models for running transport assays or host–microbiome co-cultures because the intestinal lumen is enclosed inside an organoid body, and thus, introduction of luminal components such as microbial cells or exogenous antigens is limited. Using a microinjector can improve the accessibility to the organoid lumen^{26,27}, but this method is invasive and labor intensive and requires expertise to execute. Furthermore, the conventional organoid culture is maintained under a static condition in a hydrogel scaffold, which does not accurately reflect active *in vivo* biomechanics.

Other approaches that several research groups have adopted leverage a prestructured 3D hydrogel scaffold to mimic the intestinal epithelial architecture by culturing dissociated human intestinal cells on the gel surface^{28–30}. Hydrogel scaffolds were fabricated using 3D printed, micromilled or lithographically made molds. This method has shown a self-organized alignment of dissociated epithelial cells with a physiologically relevant morphogen gradient *in vitro*, establishment of a high-aspect ratio epithelial structure and stromal–epithelial crosstalk by including stromal cells in the scaffold. However, the nature of prestructured scaffolds may preclude demonstrating a spontaneous morphogenesis process *per se*. These models also do not offer dynamic luminal or interstitial flow, lacking fluid shear stress that intestinal cells need to undergo morphogenesis and gain physiological functions. Another recent study used a hydrogel scaffold in a microfluidic platform and patterned intestinal epithelial structure using a laser etching technology³¹. Mouse intestinal organoids formed an intestinal tubular structure following the etched pattern, and a luminal fluid flow can be recapitulated using a microfluidic module. However, this model also neither demonstrates a spontaneous morphogenesis process nor includes intestinal mechanobiological motions. The same group's 3D printing technology enabled an establishment of a mini-intestinal tube with a spontaneous morphogenesis process³². Although this study sophisticatedly fabricated different segments of the gut within a tube, the model also lacks luminal fluid flow and mechanical deformations. Furthermore, the manipulability of the model may be limited, especially to perturb experimental conditions or intercellular interactions once the bioprinting process is completed. On the contrary, our proposed protocol offers spontaneous intestinal morphogenesis, physiologically relevant shear stress, biomechanics emulating intestinal peristalsis, accessibility of apical and basolateral compartments independently, and modularity for re-creating a complex biological microenvironment. Hence, our protocol for *in vitro* 3D morphogenesis may provide a complementary approach to overcome the challenges of the existing methods.

Limitations

Our protocol focuses entirely on the 3D epithelial morphogenesis, having only the epithelial cells in cultures without other types of surrounding cells such as mesenchymal, endothelial and immune cells. As stated earlier, the core of our protocol is to induce epithelial morphogenesis by removing morphogen inhibitors secreted in the basolateral side in the introduced medium⁴. While the strong modularity of our gut-on-a-chip and a hybrid chip allows us to re-create undulated 3D epithelial layers, additional biological complexity such as epithelial–mesenchymal interactions^{33,34}, extracellular matrix (ECM) deposition for 3D regeneration³⁵ and crypt–villus characteristics that convey a stem cell niche in the basal crypt³⁶ remains to be further considered in our model. Stromal cells in the

mesenchyme (e.g., fibroblasts) play a critical role in producing ECM proteins and regulating intestinal morphogenesis *in vivo*^{35,37,38}. Inclusion of mesenchymal cells in our model may enhance the morphogenesis process and cell attachment efficiency. Endothelial layers (i.e., capillary vasculatures or lymphatic vessels) play seminal roles in regulating molecular transport³⁹ and immune cell recruitment⁴⁰ in the intestinal microenvironment. Also, when tissue models aim to demonstrate multiorgan interactions, the vasculature component that can connect between the tissue models is a prerequisite. Therefore, including endothelial cells may be required for simulating more accurate physiological features with organ-level resolutions. In the case of modeling intestinal diseases, patient-derived immune cells are also essential for demonstrating innate immune responses, antigen presentation, innate-adaptive immune crosstalk and tissue-specific immunity.

The use of a hybrid chip is more straightforward than that of a gut-on-a-chip because the device setup is simpler and the use of a Transwell insert allows scalable cultures of intestinal epithelium. However, the commercially available Transwell insert with a polyester membrane is not elastic to emulate intestinal peristalsis-like movements. Furthermore, the apical compartment of the Transwell insert placed in a hybrid chip remains static, lacking shear stress on the apical side. Obviously, a static nature in the apical compartment is seldom capable of long-term bacterial co-cultures in a hybrid chip. Although we can robustly induce 3D morphogenesis in a Transwell insert when using a hybrid chip, a shortage of physiologically relevant biomechanics and apical fluid flow may restrict the implementability of the hybrid chip platform for potential applications.

In both gut-on-a-chip and hybrid chip cultures, the full-size re-creation of the human crypt–villus axis has not been fully established. Since the morphogenesis is initiated from an epithelial monolayer, the 3D microarchitecture does not necessarily provide morphological similarity with an *in vivo* crypt. Although we characterized the population of proliferative cells near the basal crypt domain in the microengineered 3D epithelium², the crypt and villus regions are not clearly compartmentalized. Although a taller upper channel of a gut-on-a-chip induces an increased height of a microengineered epithelium⁴, the maximum height is still limited to ~300–400 μm . The actual depth of human intestinal crypts *in vivo* in the small and large intestines is ~135 μm and ~400 μm in depth, respectively, and the height of a small intestinal villus is ~600 μm ⁴¹.

From an imaging standpoint, *in situ* super-resolution imaging of the 3D microarchitecture may be limited in a gut-on-a-chip because the required working distance from an objective to the epithelial layer is on the order of a couple of millimeters. To overcome this issue, a long-distance objective may be required. Furthermore, because of the high elasticity of PDMS, it is challenging to make a thin section for imaging specimen preparation. In addition, since the layer-by-layer microfabrication of a gut-on-a-chip involves a permanent bonding between each layer, it is extremely challenging to open or remove the upper layer to examine the surface structure of the epithelial layers, for example, by using scanning electron microscopy (SEM).

Hydrophobicity of PDMS has been a limiting factor in microfluidics-based studies dealing with hydrophobic small molecules because PDMS can nonspecifically adsorb such hydrophobic molecules. Other polymeric materials may be considered to substitute PDMS. Alternatively, surface modification of PDMS (e.g., coating with lipophilic material⁴² or poly(ethylene glycol)⁴³) may be contemplated to minimize the adsorption of hydrophobic molecules.

Finally, our approach has not been fully characterized for providing a high-throughput screening or a ‘one-fit-to-all’-type user-friendly experimental platform. The current protocol requires one syringe pump per each microdevice, which takes up space in a CO₂ incubator, preventing large-scale experiments. This limitation may be substantially improved by innovating the scalability of the culture format (e.g., 24-, 96- or 384-well porous inserts that allow the continuous replenishment and removal of basolateral medium).

Experimental design

To induce 3D morphogenesis of human intestinal epithelium *in vitro*, we use a microfluidic gut-on-a-chip device that contains two parallel microchannels and an elastic porous membrane in the middle to create a lumen–capillary interface. We also demonstrate the use of a single channel microfluidic device, a hybrid chip, that can offer continuous basolateral flow below a polarized epithelial layer grown on a Transwell insert. In both of the platforms, morphogenesis of various human intestinal epithelial cells can be demonstrated by applying a directional manipulation of flow to remove morphogen antagonists from the basolateral compartment. The overall experimental procedure (Fig. 1) is composed of five parts: (i) microfabrication of a gut-on-a-chip or a Transwell-insertable hybrid

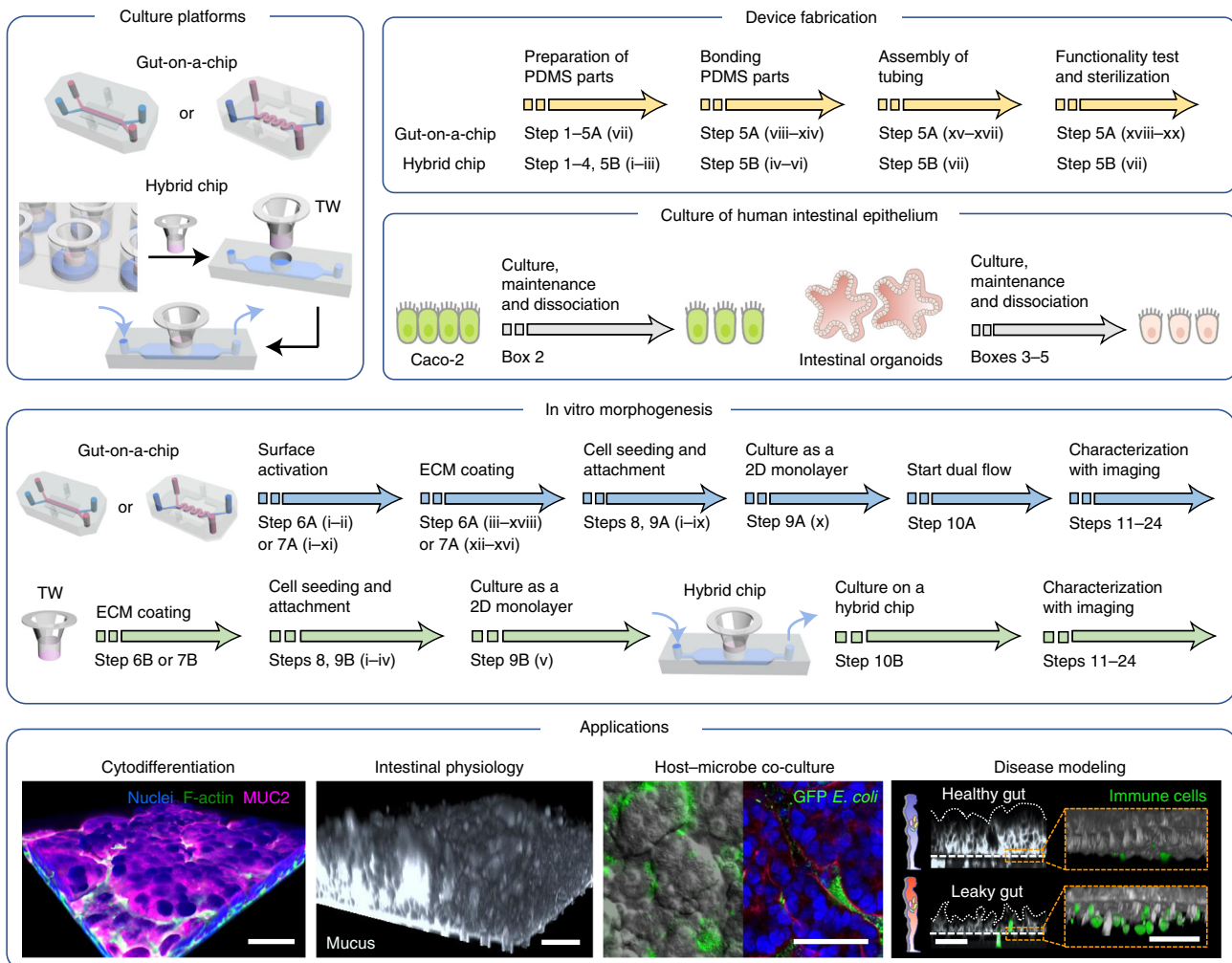


Fig. 1 | A workflow to induce in vitro intestinal morphogenesis. We use two different culture platforms: a gut-on-a-chip either with a straight channel or a nonlinear convoluted channel, or a hybrid chip that includes a Transwell (TW) insert in a microfluidic device, fabricated as described in Box 1 and Steps 1–5. ‘Device fabrication’ displays the major steps for making either a gut-on-a-chip or a hybrid chip. ‘Culture of human intestinal epithelium’ explains the cell sources used in this protocol (Caco-2 or human intestinal organoids) and the culture process. ‘In vitro morphogenesis’ shows the overall steps of Caco-2 or organoid-derived epithelial cell culture on a gut-on-a-chip or on the Transwell insert of a hybrid chip followed by the induction of 3D morphogenesis and characterization of the formed epithelial structure. Procedure step numbers or box numbers are indicated below each arrow. Applications provides examples that the established intestinal epithelial layers can be utilized for, such as characterization of cytodifferentiation, study of intestinal physiology, establishment of a host-microbiome ecosystem and disease modeling. An immunofluorescence image in ‘Cytodifferentiation’ shows nuclei, F-actin and MUC2 expressed in a 3D Caco-2 epithelial layer produced on a gut-on-a-chip. The MUC2 signal is found in both the goblet-like cells and the secreted mucus on the mucosal surface. A fluorescence image in ‘Intestinal physiology’ displays the production of mucus by staining sialic acid and *N*-acetylglucosaminyl residues using fluorescent wheat germ agglutinin. Two overlaid images in ‘Host-microbe co-culture’ show the representative host-microbiome co-culture in a gut-on-a-chip. The left image shows the co-culture of green fluorescence protein (GFP)-expressing *Escherichia coli* with a microengineered 3D Caco-2 epithelium. The right image visualizes the localization of GFP *E. coli* co-cultured with 3D Caco-2 epithelium followed by the immunofluorescence staining with F-actin (red) and nuclei (blue). Disease modeling illustrates a demonstration of healthy versus leaky gut in a gut inflammation-on-a-chip under physiological challenges by a bacterial antigen (e.g., lipopolysaccharide, LPS) and immune cells (e.g., PBMCs; green). Caco-2 cells were cultured to establish the 3D epithelial layers. Scale bars, 50 μ m. Images in bottom row: ‘Cytodifferentiation’ adapted with permission from ref. ², Oxford University Press; ‘Intestinal physiology’ reproduced with permission from ref. ⁵, NAS; ‘Host-microbe co-culture’ adapted with permission from ref. ³, NAS; ‘Disease modeling’ adapted with permission from ref. ⁵, NAS.

chip (Steps 1–5; Box 1), (ii) preparation of intestinal epithelial cells (either Caco-2 cells or human intestinal organoids; Boxes 2–5), (iii) culture of intestinal epithelial cells on a gut-on-a-chip or a hybrid chip (Steps 6–9), (iv) induction of in vitro 3D morphogenesis (Step 10) and (v) characterization of 3D epithelial microarchitectures (Steps 11–24). Finally, appropriate control groups (discussed further below) are designed to verify the validity of in vitro morphogenesis by comparing the epithelial morphogenesis with spatial, temporal, conditional or procedural controls.

Box 1 | Fabrication of silicon master molds (soft photolithography) ● Timing 4 h**Procedure**

▲ CRITICAL Soft photolithography processes should be performed in a cleanroom. For each layer of the gut-on-a-chip (the upper and lower layers and the membrane) and the hybrid chip, use a different photomask and fabricate on separate silicon wafers because the heights of the microchannels are different. Target heights of the upper and lower microchannels of the gut-on-a-chip are 500 μm and 200 μm , respectively. The channel of the hybrid chip has a target height of 200 μm .

- 1 Set two hot plates, one to 65 °C and the other to 200 °C.
- 2 Take two glass dishes and fill one with IPA and the other with acetone.
- 3 Place a 3 inch silicon wafer in the dish with acetone. Gently swirl the dish for 30 s and dry the wafer using an air gun. Transfer the wafer to the dish with IPA and swirl the dish for 30 s to wash.
 - ▲ CRITICAL STEP** Piranha solution (a mixture of hydrogen peroxide and concentrated sulfuric acid, 1:3 (vol/vol)) may be optionally used to maximize the removal of organic residues on the surface of a silicon wafer.
 - ! CAUTION** Piranha solution is extremely corrosive and generates heat. Extra safety precautions are necessary. For waste disposal, allow the solution to cool down and transfer into a clean and dry waste container. Use a secondary container and label the waste container properly. Follow safety guidelines of the facility for a more detailed procedure.
- 4 Completely dry the wafer with an air gun.
- 5 Dehydrate the wafer by placing it on the 200 °C hot plate for 10 min. After dehydration, wave the wafer in the air five times to cool down.
- 6 Pour ~10 g of photoresist SU-8 2100 on the center of the cleaned silicon wafer. Spread photoresist evenly across the wafer by holding it with tweezers. Hold the wafer over the 65 °C hot plate occasionally to make the photoresist less viscous to spread easier. Do not place the wafer directly on the hot plate.
 - ▲ CRITICAL STEP** Avoid generating bubbles when pouring SU-8.
- 7 Spread SU-8 uniformly on the wafer by running spin coating. Program the entry spin for spreading SU-8 at 500 rpm for 5–10 s at 100 rpm/s acceleration rate. Set the main spin for patterning of 200 μm thickness at 1,500 rpm, or to achieve 250 μm thickness (to fabricate 500 μm height for the upper layer of the gut-on-a-chip; please see 'Critical step' below) set at 1,200 rpm for 30 s at 300 rpm/s acceleration rate.
 - ▲ CRITICAL STEP** The main spin speed can be adjusted depending on the target thickness of the SU-8 pattern on a silicon wafer.
 - ▲ CRITICAL STEP** To fabricate the SU-8 pattern with 500 μm height for the upper layer of the gut-on-a-chip, the spin coating and soft baking steps of this Box (steps 7 and 8) are repeated sequentially (see step 9) to produce two 250- μm -thick SU-8 layers, which can be layered and joined via UV exposure in step 12 of this box to make one 500- μm -high layer.
- 8 Run a soft bake of the SU-8-coated wafer by carefully placing the wafer on the hot plate at 65 °C for 5 min, then switch the setup to 95 °C and incubate for additional 40 min.
 - ▲ CRITICAL STEP** Level the hot plate.
- 9 To achieve 500 μm height of the SU-8 pattern in the upper microchannel, repeat steps 7 and 8 to produce two 250- μm -thick SU-8 layers.
- 10 With a UV Mask Aligner, perform a lamp test to calculate exposure time to wafer, following manufacturer's instructions. (Exposure time, ms) = (exposure dose, mJ/cm^2)/(lamp power, mW/cm^2).
 - ▲ CRITICAL STEP** An optimal exposure time may need to be determined empirically.
- 11 Once the exposure time has been determined, place the photomask on the mask holder of the UV Mask Aligner and place the photomask on the the SU-8-coated wafer.
 - ▲ CRITICAL STEP** Place the printed surface of the photomask directly onto the SU-8-coated side of the silicon wafer to minimize UV dispersion.
- 12 Expose the SU-8-coated wafer and the photomask to UV light perpendicularly at 260 mJ/cm^2 for the predetermined exposure time (see step 10 of this box).
- 13 After UV exposure, post-bake the SU-8-coated silicon wafer at 65 °C for 5 min and 95 °C for 15 min on each hot plate to fabricate the pattern with 200 μm height. Extend the post-bake time at 95 °C to 30 min to fabricate the pattern with 500 μm height.
- 14 Pour developer into a glass dish and place the post-baked wafer in the dish. The volume of SU-8 developer may vary depending on the size of the glass dish. Make sure to use enough SU-8 developer to completely remove unexposed SU-8. For instance, when using a glass dish with a diameter of 150 mm and a capacity of 1 L, use ~300 mL of SU-8 developer. Develop the mold for 25 min with occasional gentle swirling.
- 15 Rinse the developed mold with ~10 mL of fresh developer and IPA sequentially by spraying the solutions using a pipette.
- 16 Dry the mold completely by blowing nitrogen or air gas.
- 17 Place the wafer in a plasma cleaner and expose to oxygen plasma (atmospheric gas, target pressure at 1×10^{-5} torr, power at 125 W) for 1.5 min.
- 18 Place the wafer in a vacuum desiccator that has a glass slide inside. The wafer and the glass slide can be placed side by side. If the vacuum desiccator is divided into layers by a plate, place the glass slide in the lower chamber and the wafer in the upper chamber. Drop 100 μL of trichloro(1H,1H,2H,2H-perfluorooctyl)silane solution on the glass slide and apply vacuum for silanization.
 - ! CAUTION** The silanization process needs to be performed in a chemical fume hood.

Microfabrication of a gut-on-a-chip or a Transwell-insertable hybrid chip (Box 1 and Steps 1–5)

Both the gut-on-a-chip and the hybrid chip are fabricated using PDMS replicas demolded from silicon molds patterned with SU-8 by soft lithography^{1,44}. The design of microchannels in each chip was determined by considering fluid dynamics such as shear stress and hydrodynamic pressure^{1,4,12}. The original design of the gut-on-a-chip (Extended Data Fig. 1a) that contains two parallel straight-lined microchannels apposed to each other has evolved to a convoluted gut-on-a-chip (Extended Data Fig. 1b) that includes a pair of curved microchannels to induce increased fluid residence time, nonlinear flow pattern and the multiaxial deformation of cultured cells (Fig. 2a–f)¹². The convoluted gut-on-a-chip may be chosen when more complex intestinal biomechanics need to be reconstituted. We have verified that the convoluted gut-on-a-chip also robustly induces 3D morphogenesis at a similar extent of epithelial growth in a similar time frame regardless of the cultured cell types

Box 2 | Culture and maintenance of Caco-2 cells ● Timing 5-7 d

Procedure

- 1 Thaw a frozen vial of Caco-2 cells in a water bath at 37 °C, then transfer the thawed cells to a T75 flask containing 15 mL of prewarmed Caco-2 culture medium at 37 °C.
- 2 Grow Caco-2 cells by changing medium every 2-3 d until the cells reach ~90% confluency.
- 3 To passage the Caco-2 cells when the cells are ~90% confluent, first warm up Caco-2 culture medium, PBS and 0.25% trypsin/1 mM EDTA in a 37 °C water bath.
- 4 Aspirate culture medium by vacuum suction. Wash the cells with 5 mL of warm PBS twice by repeating vacuum aspiration and adding fresh PBS.
- 5 Remove PBS by vacuum aspiration and add 1 mL of warm trypsin/EDTA solution for cell dissociation. Incubate the T75 flask at 37 °C in a CO₂ incubator for 10 min.
- 6 Take out the flask from the CO₂ incubator. Confirm cell dissociation under a phase-contrast microscope. Add 9 mL of Caco-2 culture medium that contains FBS to the flask and completely dissociate cells into a single-cell level by pipetting up and down.
- 7 Collect the cell suspension (~10 mL) in a sterile 15 mL conical tube. Centrifuge the dissociated cells at 300g for 3 min at 4 °C.
- 8 Remove supernatant by vacuum aspiration and resuspend with 1 mL of Caco-2 culture medium.
- 9 Count the cell number per volume by mixing 10 µL of the cell suspension with 10 µL of Trypan blue and loading 10 µL of the mixture into a hemocytometer.
- 10 Put 50-100 µL of the cell suspension into a new T75 flask that contains 15 mL of prewarmed Caco-2 culture medium. The rest of cells are discarded. Caco-2 cells with a seeding number of 1-2 × 10⁶ cells reach ~90% confluency in 5-7 d.
- 11 Repeat step 2 above for Caco-2 cell maintenance.

Box 3 | Collection of R-spondin- or Noggin-conditioned medium ● Timing 14 d

Procedure

- 1 Thaw a frozen vial of R-spondin- or Noggin-producing 293T cells in a T75 flask containing 15 mL of R-spondin culture medium or Noggin culture medium, respectively. Culture each cell line independently until the cells reach ~80% confluency in a humidified CO₂ incubator at 37 °C.
- 2 Remove culture medium and wash the R-spondin- or Noggin-producing 293T cells with 5 mL of warm PBS. Add 1 mL of 0.05% trypsin/1 mM EDTA after vacuum aspiration of the PBS.
- 3 Incubate at RT for 30 s and confirm cell detachment under a microscope.
- 4 Add 4 mL of warm antibiotic-free 293T cell medium and collect cell suspension using a pipette in a sterile 15 mL conical tube.
- 5 Centrifuge the suspension of R-spondin- or Noggin-producing 293T cells at 300g at 4 °C for 3 min.
- 6 Split the R-spondin- or Noggin-producing 293T cells into five new T75 flasks, each containing 15 mL of antibiotic-free 293T cell medium. Culture until the R-spondin- or Noggin-producing 293T cells reach ~80% confluency in a humidified CO₂ incubator at 37 °C for 2-3 d.
- 7 Harvest the R-spondin- or Noggin-producing 293T cells in each flask following steps 2-4 above and pool the cells in a 50 mL conical tube.
- 8 Centrifuge the tube at 300g at 4 °C for 3 min.
- 9 Split the R-spondin- or Noggin-producing 293T cells into 12 new T75 flasks, each containing 20 mL of medium, for collecting R-spondin- or Noggin-conditioned medium.
- 10 Culture the cells in a humidified CO₂ incubator at 37 °C for a week.
 - ! CAUTION** Noggin-producing 293 T cells bind only weakly to the flask surface. Minimize moving the flasks during incubation.
- 11 Collect the cultured medium in 50 mL sterile conical tubes.
- 12 Centrifuge at 1,000g at 4 °C for 10 min and filter the supernatant using a vacuum filter with 0.2 µm cutoff size in a biosafety cabinet on ice.
- 13 Make aliquots with the desired amount in sterile conical tubes. Store the tubes containing R-spondin- or Noggin-conditioned medium at -80 °C for up to 6 months.

compared with the original gut-on-a-chip¹². For the purpose of inducing 3D morphogenesis, thus, the linear and the convoluted gut-on-a-chip designs are interchangeable. The PDMS replica cured on the silicon molds with SU-8 patterns provides a negative feature once they are demolded (Fig. 2a). To fabricate a gut-on-a-chip, a prepared upper PDMS layer is sequentially bonded to a porous PDMS membrane, then subsequently aligned to the lower PDMS layer by performing irreversible bonding using a corona treater (Fig. 2b-f). To fabricate a hybrid chip, a cured PDMS replica is bonded to a glass slide to establish a single-channel microfluidic device that can hold a Transwell insert (Fig. 2h and Extended Data Fig. 2). The bonding process is performed by treating the surface of the PDMS replica and the glass with oxygen plasma or corona treatment. After sterilization of a microfabricated device connected to silicone tubing, the device setup is ready to use for performing 3D morphogenesis of intestinal epithelium (Fig. 2g).

Preparation of intestinal epithelial cells (Boxes 2-5 and Step 8)

In this protocol, Caco-2 cell line and intestinal organoids are used as epithelial sources (Fig. 3a). Both types of cells are independently cultured (Boxes 2 and 5) and used for seeding in an ECM-coated microchannel of a gut-on-a-chip or on a Transwell insert. Caco-2 cells (passage number between

Box 4 | Establishment of human colonic organoids from biopsies ● Timing 2.5 h**Procedure**

- 1 Bring colonic biopsies in ice-cold Primocin (final concentration 100 µg/mL) containing PBS from a hospital to the laboratory. About 10 mL of PBS in a 15 mL conical tube is enough to transport the samples in <1 h. Keep the tube on ice during the transport.
- 2 Wash the biopsies with ice-cold PBS containing Primocin three times by removing supernatant using vacuum suctioning and adding 10 mL of fresh PBS.
- 3 Fragment the biopsies into ~1 mm³ pieces using sterilized surgical scissors or razors. The fragmentation step can be done on a sterile Petri dish.
- 4 Remove PBS by vacuum suctioning or using a serological pipette and add 10 mL of 20 mM EDTA solution. Transfer all the fragmented tissue pieces into a 50 mL tube and incubate at 4 °C with rotation or gentle agitation for 1 h.
- 5 Look at the tissue under a phase-contrast microscope to see if intestinal crypts are separated from the mucosal layer. Mucosal layer will have 'holes' when crypts are released. If most of the crypts are still not released, vigorously shake or vortex the tube. This step can be repeated until you do not see more crypts isolated from the tissue.
- 6 The mucosal tissue will settle down to the bottom of the tube quickly and can be discarded afterward. Collect the separated crypts from the supernatant using a 10 mL serological pipette.
- 7 Centrifuge the tube at 150g, 5 min at 4 °C to pellet the crypts.
- 8 Wash the crypts by removing the supernatant using a 10 mL serological pipette and adding 10 mL of organoid basal medium.
- 9 Centrifuge the tube again at 150g, 5 min at 4 °C.
- 10 Discard the supernatant and resuspend the pellet in Matrigel on ice. The amount of Matrigel can be determined by the size of pellet. The recommended density is ~100–200 crypts in 30 µL of a Matrigel drop.
▲ CRITICAL STEP The density of crypts can be adjusted by manually counting their numbers under a tissue culture microscope.
- 11 Drop 30 µL of the Matrigel crypt suspension per well of a 24-well plate and incubate the plate in a CO₂ incubator at 37 °C for 10 min.
- 12 Add 500 µL of organoid culture medium per well and culture in a humidified CO₂ incubator at 37 °C for up to a week (Box 5).

Box 5 | Culture and maintenance of human colonic organoids ● Timing 7–10 d**Procedure**

- 1 Monitor human organoids cultured in a 24-well plate under a phase-contrast microscope and check if organoids show dark cell accumulation in the lumen for up to 7–10 d. When cell debris is observed and the growth of organoids is significantly slowed down, organoids are ready for subculture.
- 2 Prepare molten Matrigel and organoid culture medium at 4 °C or on ice.
- 3 Remove the organoid culture medium by vacuum aspiration from the 24-well plate and add 500 µL of ice-cold Cell Recovery solution to each well.
▲ CRITICAL STEP Matrigel is degraded by Cell Recovery solution at 4 °C or can also be physically broken down by pipetting. If you desire to degrade Matrigel completely with Cell Recovery solution, incubate the plate at 4 °C for 30 min; otherwise, use a shorter incubation time with pipetting.
- 4 Collect organoid suspension using a P1000 micropipette into a 15 mL conical tube and centrifuge at 100g at 4 °C for 5 min.
- 5 Remove supernatant using a 10 mL serological pipette and a pipette aid, and discard.
▲ CRITICAL STEP There may be a gradient of organoid pellet because of the incomplete degradation of Matrigel and cell debris. If you see this cloudy region in the centrifuged tube, do not attempt to remove a cloudy layer and leave up to 500 µL in the tube.
- 6 Add 1 mL of TrypLE Express solution. Pipette five times using a P1000 micropipette and add 9 mL of PBS at RT.
- 7 Centrifuge at 100g at 4 °C for 5 min and check if the cell pellet is clean without a cloudy layer.
- 8 Remove supernatant using a pipette aid and completely remove any residual supernatant using a P1000 micropipette and discard. Add 30 µL of Matrigel per well.
▲ CRITICAL STEP A split ratio of 1:3–1:5 is typically used.
- 9 Mix the organoid suspension by pipetting uniformly on ice and plate 30 µL of the mixture per well on a new 24-well plate.
- 10 Incubate the 24-well plate that contains passed organoids at 37 °C in a humidified 5% CO₂ incubator for 10 min.
- 11 Add 500 µL of organoid culture medium per well and keep incubating the plate in a humidified CO₂ incubator at 37 °C. Change medium every other day until organoids fully grow for 7–10 d.
! CAUTION Do not warm up the organoid culture medium. Keep the organoid culture medium on ice to prevent degradation of morphogen proteins in the medium.

10 and 50) routinely cultured in a T flask are harvested when the cells are confluent (>95% coverage in a flask) to prepare a dissociated cell suspension by trypsinization (Box 2). Human intestinal organoids derived from intestinal biopsies or surgical resections are cultured in a dome of Matrigel scaffold plated in a 24-well plate to support the structural microenvironment. Culture medium that contains essential morphogens (e.g., Wnt, R-spondin and Noggin) and growth factors, prepared as described in Box 3, is replenished every other day until the organoids grow up to ~500 µm in diameter. Fully grown organoids are harvested and dissociated into single cells for a seeding into a gut-on-a-chip or on a Transwell insert (Box 5). As we previously reported, diverse intestinal organoid lines can be established and used depending on the disease type^{12,13} (e.g., ulcerative colitis, Crohn's disease,

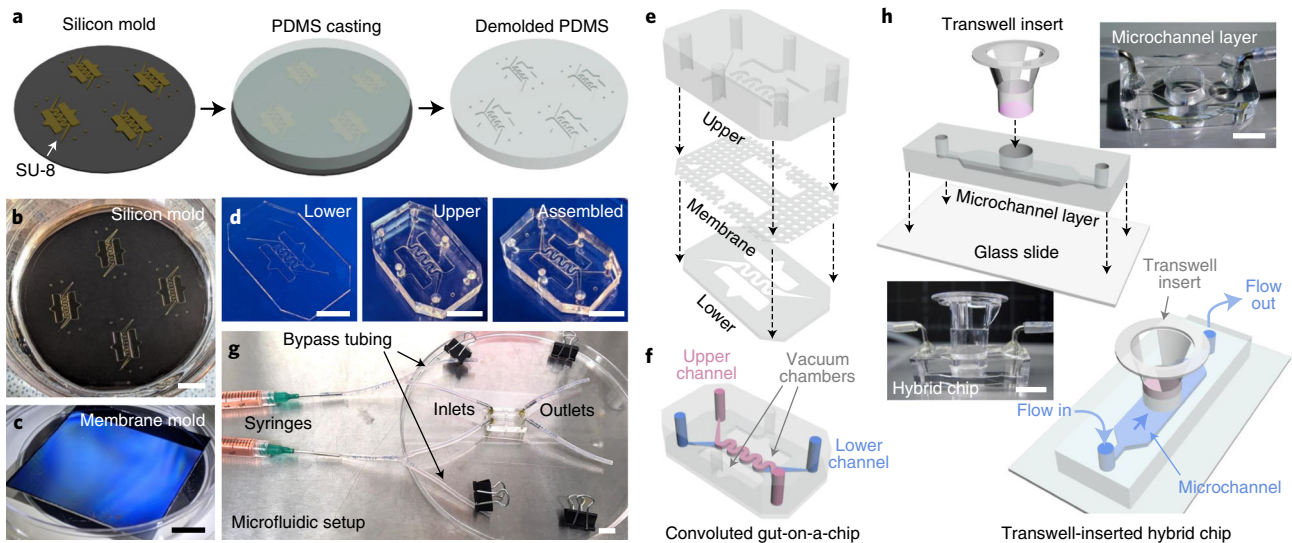


Fig. 2 | The fabrication process of a gut-on-a-chip and a hybrid chip. **a**, A schematic to prepare a PDMS part from a SU-8-patterned silicon mold. Uncured PDMS solution is poured on a silicon mold (left), cured at 60 °C (middle) and demolded (right). The demolded PDMS is cut into several pieces and cleaned for further use. **b**, A photograph of a silicon mold for preparing an upper PDMS layer. **c**, A photograph of a silicon mold for fabricating PDMS porous membranes. **d**, A series of photos of upper and lower PDMS parts as well as an assembled gut-on-a-chip device. **e**, A schematic diagram of the alignment of the upper, membrane and lower PDMS parts. Each layer is irreversibly bonded by either plasma or corona treatment. **f**, A schematic of a fabricated gut-on-a-chip device that has superimposed convoluted microchannels and vacuum chambers. **g**, Setup of a gut-on-a-chip for microfluidic cell culture. The fabricated gut-on-a-chip assembled with silicone tubing and syringes is placed on a cover slip. The chip setup is placed on a lid of a 150 mm Petri dish for handling. Binder clips are used to close the silicone tubing. **h**, A visual snapshot of the fabrication of a hybrid chip and the use of a hybrid chip for 3D morphogenesis. A Transwell insert that is independently prepared to culture a 2D monolayer of intestinal epithelial cells is inserted into a hybrid chip to induce intestinal 3D morphogenesis. Culture medium is perfused through the microchannel underneath the cell layer established on the Transwell insert. Scale bars, 1 cm. **h** reproduced with permission from ref. ⁴, Elsevier.

colorectal cancer or normal donors), the site of lesion (e.g., diseased versus nondiseased region) and the location in the GI tract (e.g., duodenum, jejunum, ileum, cecum, colon or rectum). We provide an optimized protocol in Box 5 for culturing colonic organoids (colonoids) that typically require a higher concentration of morphogens than small intestinal organoids.

Culture of intestinal epithelial cells on a gut-on-a-chip or on the Transwell insert of a hybrid chip (Steps 6–9)

In the gut-on-a-chip, it is necessary to modify the hydrophobic surface of the PDMS porous membrane for a successful ECM coating. In this protocol, we apply two different methods to modify the PDMS membrane’s hydrophobicity. For culturing Caco-2 cells, surface activation via UV/ozon treatment alone is enough to reduce hydrophobicity of the PDMS surface, coat the ECM and attach Caco-2 cells on the PDMS membrane. However, the microfluidic culture of organoid epithelium requires chemical-based surface functionalization to achieve efficient deposition of ECM proteins by applying polyethylenimine (PEI) and glutaraldehyde, sequentially, to the PDMS microchannels¹³. After the surface modification, ECM proteins are deposited to coat the functionalized PDMS surface followed by the introduction of dissociated organoid epithelium. After cell attachment, microfluidic cell culture begins by perfusing culture medium only to the upper microchannel until the cells form an intact monolayer while the lower microchannel maintains static conditions. This optimized approach for surface activation and ECM coating enables the attachment of organoid epithelium to induce 3D morphogenesis on the PDMS surface¹³.

Transwell cultures also require ECM coating prior to cell seeding; however, Transwell cultures do not require complex pretreatment steps for activating the surface of a porous insert. For growing Caco-2 cells on a Transwell insert, an ECM coating on the porous insert accelerates the attachment of dissociated Caco-2 cells (<1 h) and the formation of tight junction barrier¹ (<1–2 d). For culturing organoid cells on a Transwell insert, dissociated organoid cells are seeded on the ECM-coated insert, attached on the membrane surface (<3 h) and maintained until the organoid cells form an intact monolayer with barrier integrity. The Transwell culture is performed in a 24-well plate, and the hybrid chip is not used at this point.

Induction of in vitro 3D morphogenesis (Step 10)

The in vitro 3D morphogenesis can be initiated by applying a fluid flow on the basolateral side of the established epithelial layer. In the gut-on-a-chip, epithelial morphogenesis begins when the culture medium is perfused into both the upper and the lower microchannels (Fig. 3a). As previously described⁴, it is critical to introduce fluid flow in the lower (basolateral) compartment to continuously remove the directionally secreted morphogen inhibitors. To supply sufficient nutrients and serum to the cells bound on the porous membrane as well as to create a luminal shear stress, we typically apply dual flow in a gut-on-a-chip. In the hybrid chip, a Transwell insert that contains an epithelial monolayer is inserted into a hybrid chip. Then, the culture medium is applied through the microchannel, beneath the basolateral side of the porous Transwell insert. Intestinal morphogenesis occurs in 3–5 d after the basolateral flow is initiated in both culture platforms.

Characterization of 3D epithelial microarchitectures (Steps 11–24)

The morphological characteristics of microengineered 3D epithelial layers can be analyzed by applying various imaging modalities including phase-contrast microscopy, differential interference contrast (DIC) microscopy, SEM or immunofluorescence confocal microscopy (Figs. 3 and 4). Phase-contrast or DIC imaging can be readily performed at any time during the culture to monitor the shape and the protrusion of 3D epithelial layers. Thanks to the optical transparency of PDMS and the polyester membrane, both the gut-on-a-chip and hybrid chip platforms offer real-time in situ imaging without sectioning or disassembly of the device. When immunofluorescence imaging is performed (Figs. 1, 3c,f and 4b,c), cells are generally fixed with 4% (wt/vol) paraformaldehyde (PFA), then permeabilized and blocked with Triton X-100 and 2% (wt/vol) bovine serum albumin (BSA), sequentially. Depending on the cell type, different fixatives, permeabilizing reagents and blocking reagents may be used. Primary antibodies targeting lineage-dependent cells or regional markers are used for highlighting the cells fixed in situ in the chips, followed by treatment with secondary antibodies as well as counterstaining dyes that target either nucleus (e.g., 4',6-diamidino-2-phenylindole, DAPI) or F-actin (e.g., fluorescence-labeled phalloidin). Fluorescence-based real-time imaging can be also performed in situ to detect mucus production (Fig. 1, 'Cytodifferentiation' and 'Intestinal physiology'), stochastic colonization of microbial cells (Fig. 1, 'Host-microbe co-culture'), recruitment of immune cells (Fig. 1, 'Disease modeling') or the contours of the 3D epithelial morphology (Figs. 3c,f and 4b,c). When the gut-on-a-chip is modified to separate the upper layer from the lower microchannel layer as described in ref. ², 3D epithelial morphology as well as the microvilli on the apical brush border can be visualized by SEM (Fig. 3b). Expression of differentiation markers may be assessed by performing quantitative PCR⁵ or single-cell RNA sequencing¹⁹. In this case, epithelial cells of a 3D layer grown in either a gut-on-a-chip or a hybrid chip are harvested by trypsinization, then used for molecular or genetic analyses.

Preparation of the control groups

Control groups can be prepared by culturing the same cells (either Caco-2 or intestinal organoid epithelium) into a 2D monolayer in conventional static culture conditions. It is noted that it may be challenging to maintain static conditions in a gut-on-a-chip microdevice for a long time because the limited volume capacity of the microchannels (i.e., ~4 µL in the top channel of the original gut-on-a-chip design) may cause nutrient depletion. Thus, epithelial morphologies before and after applying basolateral flow can be also compared.

Materials

Biological materials

! CAUTION The cell lines used in your study should be regularly checked to ensure that they are authentic and are not infected with mycoplasma.

- Caco-2 human colon cancer cells (Harvard Digestive Diseases Center, RRID: [CVCL_1096](#))
- Human intestinal organoids **! CAUTION** Human intestinal organoids are derived from clinical samples such as biopsies or resected tissue pieces, as described in Box 4. The collection of human clinical samples should be regulated by the human subject research guidelines approved by the relevant institutional review board. In addition, biopsies or surgical resections may contain mucosal bacteria that require excessive washing with antibiotic-containing solutions. Make sure to add Primocin (final concentration 100 µg/mL) in all solutions used to establish germ-free organoid lines.

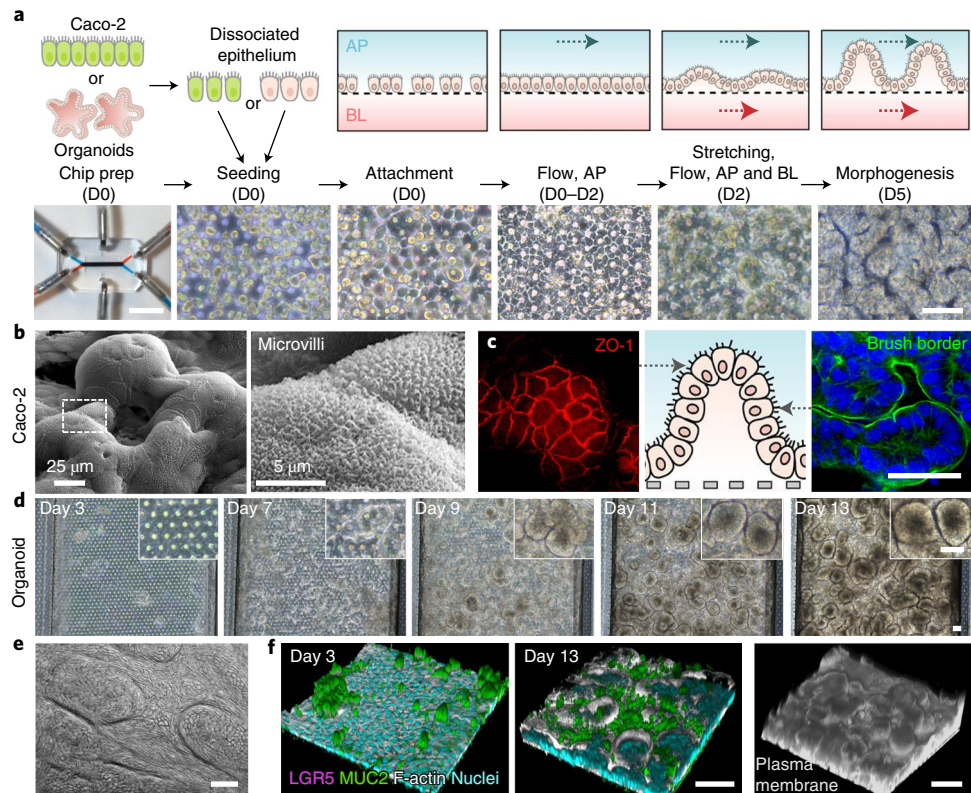


Fig. 3 | Characterization of 3D epithelial morphogenesis in a gut-on-a-chip. **a**, A workflow to induce intestinal morphogenesis in a gut-on-a-chip. Both Caco-2 human intestinal epithelium and intestinal organoids are used in this protocol to demonstrate 3D morphogenesis. The dissociated epithelial cells are seeded in a prepared gut-on-a-chip device (Chip prep). Once the cells are seeded (Seeding) and attached (Attachment) on a PDMS porous membrane on day 0 (D0), apical (AP) flow is initiated and maintained for the first 2 d (Flow, AP, D0–D2). When an intact 2D monolayer is formed, basolateral (BL) flow is also initiated along with a cyclic stretching motion (Stretching, Flow, AP and BL). Intestinal 3D morphogenesis spontaneously occurs after 5 d of microfluidic culture (Morphogenesis, D5). Phase-contrast images show representative morphologies of Caco-2 cells at each experimental step or timepoint (Bar, 100 μ m). Four schematics illustrate the corresponding cascade of intestinal morphogenesis (right top). Dashed arrows in the schematics indicate the direction of fluid flow. **b**, An SEM image shows the surface topology of the established 3D Caco-2 epithelium (left). An inset that highlights a zoomed-in area (a white dashed box) shows the microvilli regenerated on the 3D Caco-2 layer (right). **c**, Immunofluorescence confocal visualization of the tight junction protein (ZO-1, red) and the continuous brush-border membrane labeled for F-actin (green) and nuclei (blue) in a horizontal *en face* view of an established Caco-2 3D epithelium in a gut-on-a-chip. Arrows directed to the schematic image in the middle indicate the location of the focal plane of each confocal view. **d**, A time course of morphological changes of an organoid epithelium cultured in a gut-on-a-chip acquired by a phase-contrast microscope on days 3, 7, 9, 11 and 13. The insets (right top) show a high magnification of the provided images. **e**, A DIC micrograph of an organoid 3D epithelium established in a gut-on-a-chip taken on day 7. **f**, Overlaid immunofluorescence images showing the markers of stem cells (LGR5; magenta), goblet cells (MUC2; green), F-actin (gray) and nuclei (cyan) on the organoid epithelial layers grown in gut-on-a-chips for 3 (left) and 13 d (middle), respectively. See also Extended Data Fig. 3, which highlights LGR5 signal without MUC2 signal. A fluorescent image shows the epithelial microstructure of a 3D organoid epithelium established in a gut-on-a-chip visualized by staining the plasma membrane using a CellMask dye at day 13 of the culture (right). Scale bars 50 μ m, unless otherwise indicated. **b** reproduced with permission from ref. ², Oxford University Press; **c** adapted with permission from ref. ², Oxford University Press; **e** and **f** adapted with permission from ref. ¹² under a Creative Commons licence CC BY 4.0.

- Cultrex R-spondin1-producing 293T cells (Trevigen, cat. no. 3710-001-K; RRID: [CVCL_RU08](#))
- Noggin-producing 293T cells (Digestive Diseases Center, Baylor College of Medicine)

Reagents

Microfabrication

- Photomasks (CAD/Art Services, custom-made) **▲ CRITICAL** Use computer-aided design (CAD) software such as AutoCAD to design photomasks. See Extended Data Fig. 1a,b,d for the designs of the gut-on-a-chip and Extended Data Fig. 2 for the design of the hybrid chip. When designing

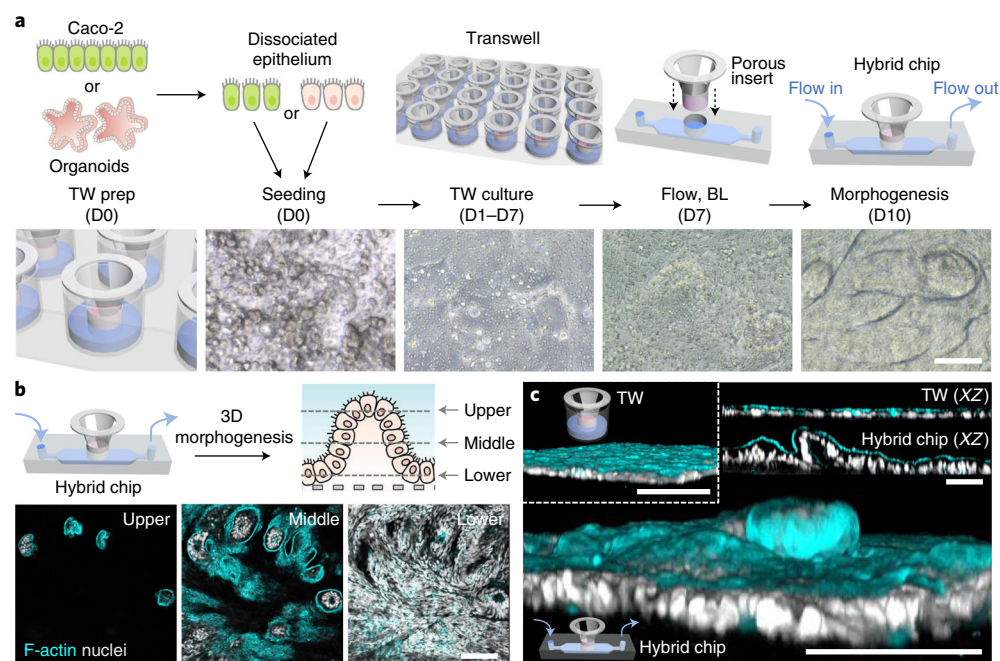


Fig. 4 | Characterization of 3D epithelial morphogenesis in a Transwell-insertable hybrid chip. **a**, A workflow to induce intestinal morphogenesis in a hybrid chip. Both Caco-2 and intestinal organoids are used in this protocol to demonstrate 3D morphogenesis in a hybrid chip platform. The dissociated epithelial cells are seeded in a prepared Transwell insert (TW prep; see the schematic below). Once the cells are seeded (Seeding) and attached on a polyester membrane in a Transwell insert, all the cells are cultured under static conditions (TW culture). After 7 d, an individual Transwell insert that contains a 2D monolayer of epithelial cells is incorporated into a hybrid chip to introduce basolateral flow (Flow, BL) that eventually leads to a generation of a 3D epithelial layer (Morphogenesis). Phase-contrast micrographs show the morphological profile of human organoid epithelial cells derived from the ascending colon of a normal donor (C103 line) at each experimental step or timepoint. Schematics in the upper layer illustrate the experimental configuration at each step. **b**, The hybrid chip (left schematic) can lead to the 3D morphogenesis of organoid epithelial cells, where the top-down confocal microscopic views taken at different Z-positions (upper, middle and lower; see the right schematic with corresponding dashed lines) show distinct morphological characteristics. F-actin (cyan), nuclei (gray). **c**, Fluorescence confocal micrographs (3D angled views) of the organoid-derived epithelial cells cultured in a static Transwell (TW; an inset inside a white dashed box) versus a hybrid chip (the largest full shot) comparing the 2D versus 3D morphologies, respectively. A pair of 2D vertical cross-cut views (insets on the right top; 'XZ') also display 2D versus 3D characteristics. Scale bars, 100 μm . **c** reproduced with permission from ref. ⁴, Elsevier.

photomasks, consider having enough space between patterned features; place a maximum of four device features per mask with a 3 inch wafer. For instance, one 3 inch silicon wafer may hold up to four patterns of either an upper or a lower layer of the gut-on-a-chip (Fig. 2a,b) or two features of the hybrid chip. Request a negative polarity printing (i.e., black background with clear features) at a resolution of 20,000 dots per inch (dpi).

- Photoresist SU-8 2100 (Microchem, cat. no. Y111075 0500L 1GL) **!CAUTION** SU-8 is combustible and can cause irritation on skin. Take safety precautions when handling the material.
- Silicon wafers (100 mm SSP Si Wafer Mechanical Grade; University Wafer Product, ID 1196)
- Sulfuric acid (Sigma-Aldrich, cat. no. 258105) **!CAUTION** Sulfuric acid is corrosive and can cause severe skin burns and eye damage. Take safety precautions when handling the material.
- Hydrogen peroxide (Fisher Chemical, cat. no. H312) **!CAUTION** Hydrogen peroxide is a strong oxidizer and can cause severe skin burns and eye damage. Take safety precautions when handling the material.
- SU-8 photoresist developer (polypropylene glycol monomethyl ether acetate; Microchem, cat. no. Y020100 4000L 1PE) **!CAUTION** SU-8 developer is flammable and may damage fertility or the unborn child. Take safety precautions when handling the material.
- Isopropyl alcohol (IPA; Acros Organics, cat. no. 149320025) **!CAUTION** IPA is flammable and may cause irritation. Take safety precautions when handling the material.
- Acetone (Acros Organics, cat. no. 177170025) **!CAUTION** Acetone is flammable and causes eye and respiratory tract irritation. Take safety precautions when handling the material.

- Trichloro(1*H*,1*H*,2*H*,2*H*-perfluorooctyl)silane (Sigma-Aldrich, cat. no. 448931) **!CAUTION** Take safety precautions when handling the material because it is combustible and causes severe skin burns and eye damage.
- Silicon mold prepatterned with an array of etched pillars for the porous membrane of the gut-on-a-chip (Applied Novel Devices, custom-made) **▲CRITICAL** Please see Extended Data Fig. 1d for the dimension of patterns. The diameter of pillars is 10 μm, center-to-center distance between pillars is 25 μm and the height of pillars is 20 μm. The suggested size of a silicon mold is ~5 cm × 5 cm (Fig. 2c). However, if the silicon mold fits into a 3" Petri dish, any size that once cut up can cover the area of a device is feasible for making a porous membrane.
- Sylgard 184 silicone elastomer kit, PDMS and curing agent (Dow Corning, cat. no. 4019862)
- Ethyl alcohol (EtOH), 200 proof (Fisher Scientific, cat. no. BP2818500) **!CAUTION** Take safety precautions when handling the material because it is flammable and causes serious eye irritation and damage to organs.
- 70% (vol/vol) EtOH (LabChem, cat. no. LC22210)

General cell culture

- Sterile deionized water (DIW)
- Trypan blue, 0.4% (wt/vol) (VWR International, cat. no. VWRVK940-100ML)

Caco-2 and 293T cell culture

- Dulbecco's modified Eagle medium (DMEM; Gibco, cat. no. 10564029)
- Fetal bovine serum (FBS), heat-inactivated (Gibco, cat. no. 10438034)
- 100× penicillin–streptomycin (Gibco, cat. no. 10378016)
- Zeocin (Thermo Fisher Scientific, cat. no. R25005)
- Puromycin dihydrochloride (Gibco, cat. no. A1113803)
- 0.25% trypsin/1 mM ethylenediaminetetraacetic acid (EDTA) (Thermo Fisher Scientific, cat. no. 25200072)
- Phosphate-buffered saline (PBS), pH 7.4, Ca²⁺- Mg²⁺-free (Thermo Fisher Scientific, cat. no. 14190250)

Organoid culture

- 0.5 M EDTA (VWR International LLC, cat. no. 97062-836)
- Matrigel, growth factor reduced (83% protein that gels; Corning, cat. no. 356234)
- Advanced DMEM/F12 (Gibco, cat. no. 12634028)
- Primocin, 50 mg/mL (Invivogen, cat. no. ant-pm-1)
- GlutaMAX, 100× (Gibco, cat. no. 35050061)
- 4-(2-hydroxyethyl)-1-piperazineethanesulfonic acid, 1 M (HEPES; Gibco, cat. no. 15630080)
- N-2 MAX Media Supplement, 100× (R&D Systems, cat. no. AR009)
- B-27 Supplement, 50× (Gibco, cat. no. 17504044)
- Nicotinamide (Sigma Aldrich, cat. no. N0636)
- N-acetylcysteine (MP Biomedicals, cat. no. 0219460305)
- Wnt Surrogate-Fc Fusion protein (U-Protein Express, cat. no. N001-0.5 mg)
- Mouse epidermal growth factor (EGF) recombinant protein (PeproTech, cat. no. 315-09)
- SB202190 (Sigma Aldrich, cat. no. S7067)
- A-8301 (Sigma Aldrich, cat. no. SML0788)
- [Leu15]-Gastrin I human (Sigma Aldrich, cat. no. G9145)
- Y-27632, dihydrochloride (STEMCELL Technologies, cat. no. 72302)
- Dimethyl sulfoxide (DMSO), sterile-filtered (Sigma Aldrich, cat. no. D2650) **!CAUTION** Take safety precautions when handling the material because it is combustible liquid.
- Cell Recovery solution (Corning, cat. no. 354253)
- TrypLE Express (Gibco, cat. no. 12605028)

On-chip culture

- Rat-tail collagen Type I, 3 mg/mL (Gibco, cat. no. A1048301)
- Steriflip-HV, 0.45 μm, polyvinylidene fluoride, radio-sterilized (MilliporeSigma, cat. no. Se1M003M00)
- PEI solution, average molecular weight ~2,000 g/mol, 50 weight % in H₂O (Sigma, cat. no. 408700)
- Glutaraldehyde, 50% (wt/vol) aqueous solution, electron microscopy grade (Electron Microscopy Sciences, cat. no. 16320) **!CAUTION** Take safety precautions when handling the material because it causes eye and skin burns.

Immunofluorescence imaging

- 4% (wt/vol) PFA solution, diluted in PBS (Alfa Aesar, cat. no. J19943-K2) **! CAUTION** Take safety precautions when handling the material because it may cause allergenic skin reaction and serious eye damage.
- Triton X-100 (Thermo Fisher Scientific, cat. no. 85111)
- BSA (MP Biomedicals, cat. no. 08810683)
- Phalloidin CruzFluor 647 conjugate (Santa Cruz Biotechnology, cat. no. sc-363797)
- Rabbit anti-ZO-1 polyclonal antibody (Thermo Fisher Scientific, cat. no. 61-7300; RRID: [AB_2533938](#))
- Rabbit anti-LGR5 polyclonal antibody (Abcam, cat. no. ab75732; RRID: [AB_1310281](#))
- Mouse anti-MUC2 monoclonal antibody (Santa Cruz Biotechnology, cat. no. sc-515032; RRID: [AB_2815005](#))
- Goat anti-mouse IgG DyLight 488 (Abcam, cat. no. ab96871; RRID: [AB_10680543](#))
- Goat anti-rabbit IgG Alexa Fluor 555 (Abcam, cat. no. ab150078; RRID: [AB_2722519](#))
- DAPI solution, 1 mg/mL (Thermo Fisher Scientific, cat. no. 62248)
- CellMask Deep Red Plasma membrane stain (Thermo Fisher Scientific, cat. no. c10046)

Equipment

- Glass dishes (PYREX, cat. no. 3140190)
- Disposable plastic cups (Dixie, 12 Oz, cat. no. CP12DX)
- Fluoropolymer coated polyester film (3M Scotchpak Release Liners, product no. 9744)
- Scalpel blades, #11 (Fine Science Tools, cat. no. 1001100)
- Scalpel handles, #3 (Defender, cat. no. 10604)
- Razor blades (Fisher Scientific, cat. no. 12-640)
- Swiss wafer style tweezers, 120 mm length (SPI SUPPLIES, Item No. S2WFG-XD)
- Tweezers, stainless steel (SPI SUPPLIES, Item No. W2ANCB-XD)
- 150 mm Petri dishes (Thermo Scientific, cat. no. 168381)
- Biopsy puncher, diameter 2 mm (GE Healthcare, cat. no. WB100029)
- Biopsy puncher, diameter 8 mm (Med Vet International, cat. no. BP8MM)
- One-side frosted glass slides (Corning, cat. no. 2948-75×25)
- Glass slides, 75 × 50 mm (Corning, cat. no. 2947-75×50)
- Coverslips, No. 1, 60 × 48 mm (Epremedia, cat. no. 48×60-1-002G)
- Silicone tubing, 0.8 mm inner diameter, 2.4 mm outer diameter (Saint Gobain Performance Plastics, cat. no. ABW00001)
- Y-connectors, 1.57 mm inner diameter (Eldon James, cat. no. Y0-1NN)
- Blunt-end needles, 18 gauge, 1 inch long (Shintop, cat. no. JJ-ZT001-100-LVS)
- 5 min epoxy glue (Devcon, cat. no. 14250)
- Binder clips, width 12.7 mm (Universal, cat. no. UNV10199)
- 1 mL syringes, slip tip (BD Biosciences, cat. no. 309659)
- Vacuum desiccator No. 5, plate diameter 23 cm (Bel-Art, cat. no. F42025-0000)
- Scissors, 20 cm (Office Depot, cat. no. 458612)
- Scotch Magic Invisible tape, 1.9 cm × 22 m (3M, cat. no. 452913)
- Lead balls, #7.5, diameter 2.39 mm (RotoMetals, part no. EagleShot7new)
- Tin containers for lead balls, 150 mL (Fizz, model no. 8541994739)
- 15 mL conical tubes (Corning, cat. no. 430790)
- 50 mL conical tubes (Corning, cat. no. 430829)
- 10 mL serological pipettes (CELLTREAT, cat. no. 229210B)
- Pipette aid (Drummond Scientific, cat. no. 4-000-101)
- P20 micropipette (Eppendorf, cat. no. 3124000040)
- P100 micropipette (Eppendorf, cat. no. 3124000075)
- P1000 micropipette (Eppendorf, cat. no. 3124000121)
- P1000 pipette tips (CELLTREAT, cat. no. 229018)
- P100 pipette tips (CELLTREAT, cat. no. 229021)
- Vacuum filter unit, 500 mL, 0.2 µm cutoff (Fisher Scientific, cat. no. FB12566504)
- Vacuum suction tubing (ADI MEDICAL, cat. no. D4808)
- Pasteur glass pipettes (Fisher Scientific, cat. no. 13-678-20D)
- Syringe filter, cutoff size 0.2 µm (VWR International, cat. no. CA28145-477)
- Hemocytometer (LW Scientific, cat. no. CTL-HEMM-GLDR)
- Cell strainers, 100 µm (CELLTREAT, cat. no. 229485)

- T flasks, surface area 75 cm² (Fablab, cat. no. FL7341)
- 500 mL glass bottles (PYREX, cat. no. 1395500)
- 24-well culture plates (Corning, cat. no. 3524)
- Transwell insert, polyester membrane, 0.4 µm pore (Corning, cat. no. 3470)
- Luer lock syringes, 3 mL sterile (BD Biosciences, cat. no. 309657)
- Spin coater (Laurell, model no. WS-400B-6NPP/AS2)
- Mask aligner for UV exposure (Karl Suss America, model no. MA6/BA6) **! CAUTION** Take safety precautions when handling the equipment. Avoid being exposed to UV light.
- Hot plates (Thermo Scientific, cat. no. HP88857100) **! CAUTION** Take safety precautions with high temperature.
- Biosafety cabinet (NuAire, model no. NU-437-400)
- Dry oven (Fisher Scientific, cat. no. 15-103-0519)
- Plasma cleaner (Femto Science, cat. no. COVANCE-1MPR)
- UV/ozone generator (Jelight Company, model no. 342)
- Corona treater (Electro-Technic Products, model no. BD-20AC) **! CAUTION** Take safety precautions when handling the equipment. Avoid being exposed to corona plasma beam.
- CO₂ incubator, 37 °C, humidified, 5% CO₂ (Eppendorf, model no. C170i)
- Syringe pump (Braintree Scientific, model no. BS-8000 120V)
- Centrifuge (Eppendorf, model no. 5910R)
- Water bath (VWR, cat. no. 10128-126)
- Inverted phase-contrast microscope (DMi1, Leica microsystems)
- Phase-contrast microscope (Axiovert 40CFL, Zeiss)
- TCS SPE confocal microscope (DMi8, Leica microsystems)
- Confocal microscope (Leica SP5 X MP DMi-6000)
- FlexCell FX-5000 Tension system (Flexcell International Corporation)
- Scanning electron microscope (Vega III SEM, Tescan USA)
- Water purification system (MiliporeSigma, Direct-Q Water Purification System, cat. no. ZRQS0P3WW)

Software

- LAS X imaging software (Leica microsystems; provided with the microscopes)
- MetaMorph (Molecular Devices, <https://www.moleculardevices.com/products/cellular-imaging-systems/acquisition-and-analysis-software/metamorph-microscopy#ref>)
- IMARIS (IMARIS x64; Bitplane Scientific Software, <https://imaris.oxinst.com/packages>)
- AutoQuant (AutoQuant X, Version X3.0.1; Media Cybernetics, <https://www.mediacy.com/autoquantx3>)

Reagent setup

Caco-2 culture medium

Add 100 mL of heat-inactivated FBS (final concentration 20% (vol/vol)) and 5 mL of 100× penicillin–streptomycin to 395 mL of DMEM in a biosafety cabinet. Store the medium at 4 °C for up to 6 months.

R-spondin culture medium

Add 150 µL of 100 mg/mL Zeocin (final concentration 300 µg/mL) and 5 mL of heat-inactivated FBS (final concentration 10%, (vol/vol)) to 45 mL of DMEM. Store the medium at 4 °C for up to 6 months.

Noggin culture medium

Add 50 µL of 10 mg/mL puromycin (final concentration 10 µg/mL) and 5 mL of heat-inactivated FBS (final concentration 10% (vol/vol)) to 45 mL of DMEM. Store the medium at 4 °C for up to 6 months.

Antibiotic-free 293T cell medium

Add 5 mL of heat-inactivated FBS (final concentration 10% (vol/vol)) to 45 mL of DMEM. Store the medium at 4 °C for up to 6 months.

Medium for collecting R-spondin- and Noggin-conditioned medium (Step 9, Box 3)

Add 40 mL of heat-inactivated FBS (final concentration 8% (vol/vol)) and 5 mL of GlutaMAX to 455 mL of Advanced DMEM/F12. Store the medium at 4 °C for up to 6 months.

Organoid basal medium

Add 5 mL of GlutaMAX, 5 mL of 1 M HEPES (final concentration 10 mM) and 5 mL of 100× penicillin–streptomycin to 485 mL of Advanced DMEM/F12. Store the medium at 4 °C for up to 6 months.

Organoid culture medium

In a sterile 500 mL bottle, add 337.7 mL of organoid basal medium, 500 µL of 100 µg/mL human recombinant Wnt3a (final concentration 100 ng/mL), 100 mL of R-spondin-conditioned medium (Box 3), 50 mL of Noggin-conditioned medium (Box 3), 1 mL of 50 mg/mL Primocin (final concentration 100 µg/mL), 2.5 mL of N-2, 5 mL of B-27, 2.5 mL of 1 M nicotinamide (dissolved in DIW; final concentration 10 mM), 500 µL of 500 mM *N*-acetylcysteine (dissolved in sterile DIW; final concentration 1 mM), 250 µL of 100 µg/mL mouse recombinant EGF (dissolved in PBS; final concentration 50 ng/mL), 33.15 µL of SB202190 (25 mg/mL, dissolved in DMSO; final concentration 10 µM), 10.5 µL of A-8301 (5 mg/mL dissolved in DMSO; final concentration 500 nM) and 10.4 µL of gastrin (0.5 mg/mL dissolved in PBS; final concentration 10 nM). Mix the contents by gently inverting the bottle two to three times, and filter the medium using a vacuum filter (cutoff size 0.2 µm). Store aliquots (40 mL per tube) of the organoid culture medium at –20 °C for up to 3 months. The recipe for the organoid culture medium was established on the basis of previously published studies^{23,25,45}.

Organoid differentiation medium

Add 465.7 mL of organoid basal medium, 25 mL of Noggin-conditioned medium (Box 3), 1 mL of Primocin (50 mg/mL; final concentration 100 µg/mL), 2.5 mL of N-2, 5 mL of B-27, 500 µL of *N*-acetylcysteine (500 mM dissolved in sterile DIW; final concentration 1 mM), 250 µL of mouse recombinant EGF (100 µg/mL dissolved in PBS; final concentration 50 ng/mL), 10.5 µL of A-8301 (5 mg/mL dissolved in DMSO; final concentration 500 nM) and 10.4 µL of gastrin (0.5 mg/mL dissolved in PBS; final concentration 10 nM) to a sterile 500 mL bottle. Mix the contents by inverting the bottle two to three times, then filter the mixture with a vacuum filter (cutoff size 0.2 µm). Store aliquots (40 mL per tube) of the organoid differentiation medium at –20 °C for up to 3 months.

PEI solution

Add 1 mL of 50% (wt/vol) PEI solution to 49 mL of PBS (final concentration 1%(wt/vol)) in a 50 mL conical tube. Mix the solution by inverting the tube two or three times. Filter the solution using a syringe filter (cutoff size 0.2 µm). Store the tube at 4 °C for up to 6 months.

Glutaraldehyde solution

Add 100 µL of glutaraldehyde stock solution (50% (wt/vol)) to 49.9 mL of PBS in a 50 mL conical tube to produce working solution (final concentration 0.1% (wt/vol)). Mix the solution by inverting the tube two or three times. Filter the solution using a 0.2 µm syringe filter. Store the tube at 4 °C for up to 6 months.

Blocking solution (2% (wt/vol) BSA solution)

Dissolve 1 g of BSA in 50 mL of PBS. Filter the solution using a 0.2 µm syringe filter. Store aliquots (10 mL per tube) at 4 °C for up to 6 months.

Permeabilizing solution

Add 150 µL of Triton X-100 to 50 mL of blocking solution (final concentration of Triton X-100 0.3% (vol/vol)). Filter the mixture using a 0.2 µm syringe filter. Store aliquots (10 mL per tube) at 4 °C for up to 6 months.

Primary antibody solution

Dilute primary antibodies in blocking solution to the following final concentrations: anti-ZO-1 (final concentration 20 µg/mL), anti-MUC2 (final concentration 10 µg/mL) and anti-LGR-5 (1:50 dilution) for in situ on-chip immunofluorescence staining.

Secondary antibody solution

Dilute secondary antibody solutions in blocking solution, using a 1:50 dilution factor for the goat anti-mouse IgG DyLight 488 and 1:200 dilution factor for the goat anti-rabbit IgG Alexa Fluor 555.

Counterstaining solutions

Dilute the Phalloidin CruzFluor 647 conjugate and the DAPI solutions 1:500 in PBS.

Procedure

Microfabrication ● **Timing 2–4 d**

- 1 Clean the silicon molds prepared as described in Box 1 (Fig. 2a ‘Silicon mold’) and 2b) with 100% EtOH. Remove residual EtOH with an air gun and completely dry the molds in a 60 °C dry oven for at least 2 h.
- 2 Mix PDMS base elastomer and curing agent with 15:1 mass ratio in a disposable cup and stir the mixture vigorously for at least 60 s. Degas the mixture in a vacuum desiccator at room temperature (RT, 20–25 °C) for 20 min.

▲ CRITICAL STEP The most conventional mixing ratio of PDMS base elastomer and curing agent is 10:1 mass ratio. However, we use 15:1 ratio to increase the elasticity of the device.

- 3 Place each silicon mold into a 100 mm Petri dish. Pour the degassed PDMS solution onto the silicon molds and degas the poured PDMS in a vacuum desiccator for 20 min. The desired thicknesses of cured PDMS layers of the upper and the lower layers are ~7 mm and ~1 mm, respectively. The desired thickness of a PDMS layer for making a hybrid chip is ~7 mm. The thickness can be estimated by looking at the Petri dish from the side. Remove floating bubbles using an air gun, then put the silicon molds containing uncured PDMS in a 60 °C dry oven (Fig. 2a ‘PDMS casting’). Make sure the shelf in the oven is leveled. Incubate for at least 4 h to completely cure the PDMS solution.
- 4 Demold the cured PDMS parts from the silicon molds by cutting the edge with a scalpel and lifting up the PDMS layers using tweezers (Fig. 2a ‘Demolded PDMS’). Cut the PDMS pattern into a desired size with sufficient margins (at least 0.5 cm apart from the patterns) using a scalpel or a razor blade (Fig. 2d).
- 5 To fabricate a gut-on-a-chip, follow option A. To make a Transwell-insertable hybrid chip, follow option B.

(A) Microfabrication of a gut-on-a-chip

- (i) Prepare 1-cm-thick PDMS slabs by gently pouring uncured degassed PDMS solution (15:1 mass ratio, base polymer:curing agent) into a Petri dish, curing in a 60 °C dry oven overnight and cutting using a scalpel to the size that covers the patterned area of the membrane wafer.

▲ CRITICAL STEP The desired thickness of a PDMS slab can be determined by looking at the Petri dish from the side while pouring the degassed PDMS mix.

- (ii) Prepare a 3 kg weight by filling a tin container with lead balls.

▲ CRITICAL STEP Conventional 3 kg weights can be also used. However, we use tin containers filled with lead balls to provide a contact surface that is as flat as possible and maximize the contact surface area.

- (iii) To produce a porous PDMS membrane, pour ~1 mL of uncured PDMS onto a prepatterned silicon mold that contains an array of micropillars (diameter 10 μm; Fig. 2c and Extended Data Fig. 1d; see ‘Reagents’), then cover with a fluoropolymer-coated polyester film (3M Scotchpak Release Liners) without bubbles. Next, place a 1-cm-thick PDMS slab (from Step 5A(i)) on top of the fluoropolymer-coated polyester film, lay frosted glasses on the flat PDMS slab (frosted side down to the PDMS slab) and put the 3 kg weight from Step 5A(ii) on top. Incubate this setup at RT for 2 h or until the film does not freely move on the mold. Move the setup to a 60 °C dry oven and cure PDMS for >4 h.

- (iv) To prepare an upper layer, punch holes (outer diameter 2 mm) at the connecting ports of the inlet and outlet of microchannels as well as the vacuum reservoirs of the PDMS replica from Step 4. Clean the punched holes by flushing them with 100% EtOH and remove residual EtOH using an air gun. Clean the surface of the PDMS parts with Scotch Magic tape and completely dry the parts in a 60 °C dry oven for 4 h or more.

- (v) To prepare a lower layer, clean the surface of a lower PDMS layer (from Step 4) with Scotch Magic tape and place it on a No. 1 coverslip.

! CAUTION Handling a lower PDMS layer is challenging because the layer is very thin (~1 mm). Make sure to avoid bubble trapping or wrinkling when a lower PDMS layer is placed on a coverslip.

▲ CRITICAL STEP The fabricated lower PDMS layer does not need to be bonded with a coverslip. No surface activation step is needed.

- (vi) Demold the PDMS membrane layer attached to the fluoropolymer-coated polyester film from the silicon membrane mold in Step 5A(iii), and keep it in a clean Petri dish to avoid adsorption of lint until use.

? TROUBLESHOOTING

- (vii) Keep all the prepared PDMS parts in a lint-free condition (e.g., keep the parts in a container with a lid).
- (viii) Place PDMS parts of an upper layer and a porous membrane in a Petri dish, with the surface to be treated facing upward, and expose to oxygen plasma (atmospheric gas, target pressure at 1×10^{-5} torr, power at 125 W) for 1.5 min in the plasma cleaner.
- (ix) Take out the plasma-treated PDMS layers immediately once the process is done and place the patterned surface of the upper PDMS layer onto the PDMS surface of the membrane. Press the PDMS surface of the upper layer gently and examine whether any air bubbles are trapped between the two layers. If an air bubble is found, keep pressing the upper PDMS part for 3–5 s.
- (x) Incubate the PDMS setup in an 80 °C oven for irreversible bonding for >4 h.
- (xi) After bonding, detach the assembly of the upper PDMS layer bonded with the porous membrane from the polyester film by facing the membrane surface up and remove the membrane from the area covering the vacuum chambers and the ports that connect to the lower microchannels (Fig. 2e) using fine-tip forceps, under an optical microscope or a stereoscope.

▲ CRITICAL STEP This step is needed to make completely through-hole ports to connect tubing to the lower layer and to make empty vacuum chambers.

? TROUBLESHOOTING

- (xii) Activate the surface of the membrane-bound upper PDMS part and the lower PDMS layer placed on a coverslip in Step 5A(v) by treating with corona plasma for at least 1 min each.
- (xiii) Place the membrane-bound upper PDMS layer and the lower layer together, and under the microscope, align the microchannels and tap the PDMS surface using tweezers to enhance bonding.
- (xiv) Incubate the whole setup for bonding in an 80 °C dry oven for >12 h to make a complete gut-on-a-chip device (Fig. 2f).
- (xv) Assemble tubing for inlets and outlets of the upper and the lower microchannels of a gut-on-a-chip (Fig. 2g). To make an inlet connecting part, join 4-cm-long silicone tubing to all the branches of a Y-connector. To one end, connect an 18 G blunt-end needle which will serve as a connecting port of a Luer-lock syringe for medium supply. To another end, connect a bent stainless-steel connector that is made by separating the shaft part of a 18 G blunt-end needle from the needle hub and bending it to 90–100°. Insert the cut metal part into the silicone tubing. The remaining branch will serve as a bypass tubing. Prepare two inlet parts per chip so they can be connected to both upper and lower microchannels.

▲ CRITICAL STEP The purpose of the bypass tubing is to manipulate pressure when handling syringes. During a cell culture in a gut-on-a-chip, open the bypass tubing while closing the outlet every time when removing and reassembling syringes to avoid generating unnecessary pressure on the cells in the channel. This procedure is explained in detail in the latter steps.

- (xvi) To make an outlet part, connect a bent metal connector to 4-cm-long silicone tubing. Prepare two sets per chip.
- (xvii) Assemble the prepared inlet and outlet parts on the gut-on-a-chip device by inserting stainless steel connectors that link to tubing into the holes in the gut-on-a-chip.
- (xviii) Connect two 1 mL syringes containing 70% EtOH to the inlet ports and flow EtOH through the microchannels. Inspect whether any leakage occurs. If there is a leakage, discard the device.

? TROUBLESHOOTING

- (xix) To test whether the membrane integrated into a gut-on-a-chip is porous, close the outlet of the lower microchannel and bypass tubing of both upper and lower microchannels using binder clips and push the syringe connected to the lower microchannel, making the fluid flow from the lower to the upper microchannel. Inspect whether the fluid comes out to the outlet of the upper microchannel without any leakage or pressure. Repeat the same test by closing the upper microchannel and pushing the syringe connected to the upper microchannel.

? TROUBLESHOOTING

- (xx) Remove syringes from the hub of the device and dry the device in a 60 °C dry oven overnight.

(B) Microfabrication of a hybrid chip

- (i) Punch a hole using a biopsy puncher (outer diameter 8 mm) in the center of the channel of the PDMS replica from Step 4, and punch holes to the marked connecting ports using a biopsy puncher (outer diameter 2 mm).
- (ii) Wash the PDMS part with 100% EtOH and dry completely in a 60 °C dry oven for at least 4 h (Fig. 2h ‘Microchannel layer’).
- (iii) Clean the PDMS part and a glass slide using Scotch Magic tape to remove lint.
- (iv) Place the PDMS part and the glass slide in a Petri dish, facing the surface to be treated upward, and expose to oxygen plasma (atmospheric gas, target pressure at 1×10^{-5} torr, power at 125 W) for 1.5 min in a plasma cleaner.
- (v) Take out the plasma-treated PDMS part and the glass slide immediately once the plasma treatment process is done, and place the PDMS part on the surface-activated glass slide (Fig. 2h). Tap the PDMS part gently and examine whether any air bubble is trapped between the two layers. If an air bubble is found, press the PDMS part gently for 3–5 s.
- (vi) Incubate the setup in an 80 °C dry oven for bonding for >4 h to produce a complete hybrid chip device (Fig. 2h).
- (vii) Prepare a set of inlet and outlet tubing, as described in Step 5A(xv) and (xvi), and attach to the ports.

■ **PAUSE POINT** Keep the fabricated devices at RT in a covered container. The fabricated devices can be stored indefinitely under this condition.

▲ **CRITICAL STEP** The estimated success rate of microfabrication is >90% that does not cause any leakages due to the misalignment. However, the success rate may vary depending on the level of proficiency in the fabrication process and training. See Table 1 for troubleshooting.

Surface activation and ECM coating for Caco-2 culture ● Timing 2 h to 1 d

- 6 For a gut-on-a-chip experiment, follow option A. For a hybrid chip experiment, follow option B because a Transwell insert does not need surface activation. If the device will be used for Caco-2 cell culture, follow this step, but if you intend instead to use it for organoid culture, please skip to Step 7.

(A) Surface activation and ECM coating in a gut-on-a-chip

- (i) Incubate a gut-on-a-chip device in a 60 °C dry oven for 30 min to remove any residual moisture.
- (ii) Put the gut-on-a-chip device setup in a UV/ozone generator. Expose to UV and ozone for 40 min.

▲ **CRITICAL STEP** Keep the distance of the device from the UV lamp ~3 cm or less. Also, avoid any tangling of tubing so the surface of microchannels is efficiently activated during the treatment.
- (iii) Prepare an ECM mixture by adding 50 µL of 3 mg/mL rat-tail collagen I (final concentration 30 µg/mL) and 50 µL of Matrigel (100× dilution) to 5 mL of ice-cold DMEM. Keep this solution at 4 °C or on ice until the UV/ozone treatment is over.

▲ **CRITICAL STEP** It is recommended that the ECM mixture be prepared right before the UV/ozone treatment is done.
- (iv) Bring the device to a biosafety cabinet immediately after the UV/ozone treatment, and expose the chip to UV light while the chip is cooled down to RT for 5 min.
- (v) Prepare two 1 mL syringes containing 300 µL of the cold ECM mixture from Step 6A(iii).
- (vi) Close the bypass tubing in both upper and lower microchannels using binder clips. Keep the outlet tubing of both the upper and the lower microchannels open.
- (vii) Attach the ECM mixture containing syringes from Step 6A(v) to the inlets of the upper and the lower microchannels of the device.
- (viii) Introduce the ECM mixture into the microchannels. Keep both outlets open without clamping.

▲ **CRITICAL STEP** The ECM mixture can be introduced only to the upper microchannel if the lower microchannel does not need to be coated. This can be determined empirically. Caco-2 cells have relatively strong binding on the ECM-coated PDMS surface, compared

with organoid-derived cells. If the cell attachment is repeatedly successful without coating the lower microchannel, only the upper microchannel may be coated with ECM. In this case, leave the lower microchannel filled with air by clamping the outlet of the lower microchannel with a binder clip.

- (ix) Incubate the device at 37 °C in a humidified 5% CO₂ incubator for 1 h.
 - (x) During the incubation time, prepare 3 mL syringes containing prewarmed Caco-2 culture medium. Degas the warm Caco-2 culture medium using a Steriflip to minimize air bubble generation in the medium. Attach the Steriflip to a 50 mL conical tube that contains the warm Caco-2 culture medium. Flip the tube over and attach a vacuum suction tubing to the connecting port on the Steriflip. Wait until the medium is filtered through the membrane of the Steriflip and wait for an additional 1 min for degassing. Tap the Steriflip tube to generate bubbles of dissolved gas while running vacuum suction. Remove the Steriflip unit.
 - (xi) After 1 h of ECM coating, take out the device from the CO₂ incubator and place it inside the biosafety cabinet.
 - (xii) Close the outlet tubing that is connected to the upper and lower microchannels using binder clips.
 - (xiii) Open the bypass tubing connected to the lower microchannel.
 - (xiv) Remove the 1 mL syringe connected to the lower microchannel and aspirate residual ECM solution in the blunt-end needle hub. Close the outlet tubing connected to the lower microchannel with a binder clip, while keeping the bypass tubing open.
 - (xv) Attach a 3 mL Luer-lock syringe that contains Caco-2 culture medium from Step 6A(x) to the blunt-end needle connected to the lower microchannel of the gut-on-a-chip. Perfuse the medium (~50 µL) to the bypass tubing. Next, close the bypass tubing connected to the lower microchannel using a binder clip once the tubing is completely filled with the introduced medium.
 - (xvi) Open the outlet tubing linked to the lower microchannel. Gently flow the Caco-2 culture medium through the lower microchannel. After perfusion, clamp the outlet tubing attached to the lower microchannel with a binder clip.
- ▲ CRITICAL STEP** Remove air bubbles that can be trapped inside the microchannel.
- (xvii) Repeat Steps 6A(xiii)–(xvi) to replace the 1 mL syringe used for ECM introduction to the upper microchannel with a 3 mL Luer-lock syringe containing Caco-2 culture medium.
 - (xviii) Open both outlet tubing by removing binder clips once two 3 mL syringes are firmly connected to the gut-on-a-chip device.

■ PAUSE POINT Optionally, when there is not enough time to continue the process, this Procedure can be paused here overnight. In this case, flow the Caco-2 culture medium through the microchannels at 30 µL/h in the 37 °C humidified CO₂ incubator overnight. However, this process should be cautiously performed because the coated ECM proteins can be perturbed or washed off, which can lead to a poor attachment of dissociated epithelial cells.

(B) ECM coating of a Transwell insert

- (i) Prepare an ECM mixture following the recipe in Step 6A(iii) (30 µg/mL of collagen I and 100× diluted Matrigel).
- (ii) Add 100 µL of the ECM mixture to the apical side of a Transwell insert.
- (iii) Incubate the Transwell insert at 37 °C in a humidified CO₂ incubator for 1 h.
- (iv) Remove the ECM mixture using a micropipette.
- (v) Add 100 µL of Caco-2 culture medium to the Transwell insert and add 500 µL of the same medium in the basolateral compartment. Keep this setup at 37 °C in the humidified CO₂ incubator until cell seeding.

Surface activation and ECM coating for organoid culture ● Timing 1 d

- 7 For a gut-on-a-chip experiment, follow option A. For a hybrid chip experiment, follow option B because the Transwell insert does not need surface activation. If the device will be used for organoid cultures, follow this step, but this step can be skipped if you have carried out Step 6 already and are using the device for Caco-2 cell culture.

(A) Surface activation and ECM coating in a gut-on-a-chip

- (i) Follow Step 6A(i)–(ii) for the activation of PDMS surface.
- (ii) Close the bypass tubing and the outlet of the lower microchannel using binder clips.

- (iii) Remove the outlet tubing set linked with a bent stainless-steel connector from the upper microchannel. Keep the bypass tubing of the upper microchannel open.
- (iv) Introduce 30 μL of 1% PEI solution through the outlet hole of the upper microchannel using a P100 micropipette.
- (v) Reconnect the outlet tubing in the upper microchannel and close both bypass and outlet tubing of the upper microchannel using binder clips.
- (vi) Repeat Step 7A(ii)–(v) for the lower microchannel.
- (vii) Incubate the device at RT for 10 min.
- (viii) Repeat Steps 7A(ii)–(vi) but using 0.1% glutaraldehyde solution instead of 1% PEI.
- (ix) Incubate the device setup at RT for 20 min.
- (x) Wash both microchannels by flowing 1 mL of sterile DIW using 1 mL syringes.
- (xi) Dry the chip setup in a 60 °C dry oven overnight.
- (xii) Repeat Step 6A(iii) and (v) to prepare syringes containing ECM mixture.
- (xiii) After cooling down the dried gut-on-a-chip setup in a biosafety cabinet for 10 min, attach the ECM mixture containing syringes to both microchannels by following Step 6A(vi)–(vii), and introduce the mixture by manually pushing the plungers.
- (xiv) Incubate the device setup at 37 °C in a humidified CO₂ incubator for 1 h.
- (xv) Replenish the ECM solution only in the upper channel by pushing the syringe plunger of the upper channel gently, and incubate the device in the incubator for another 1 h.
- (xvi) Prepare two 1 mL syringes containing cold organoid culture medium that is depleted of A8301 but supplemented with Y-27632. Connect the syringes to the chip and gently flow the medium through the channels by following Step 6A(xv)–(xviii). Flow the channels one by one (i.e., when the upper channel is handled, make sure the lower channel tubing is closed, and vice versa).

▲ CRITICAL STEP This step should be cautiously performed. Flow the organoid culture medium slowly, and make sure to handle one microchannel at a time. The coated ECM proteins can be easily perturbed or washed off, which can lead to poor attachment of dissociated epithelial cells.

(B) ECM coating of a Transwell insert

- (i) Follow the methods described in Step 6B(i)–(iv).
- (ii) Add 100 μL of organoid culture medium, depleted of A8301 but supplemented with Y-27632 to the membrane insert, and add 500 μL of the same medium in the basolateral compartment.

Cell preparation for seeding ● Timing 30 min

8 Harvest the fully cultured cells (Boxes 2 and 5) for seeding in either a gut-on-a-chip or on a Transwell insert. Follow option A or B for seeding the Caco-2 cells or the human organoids epithelial cells, respectively.

(A) Preparation of Caco-2 cells for seeding

- (i) Wash a T75 flask containing 95% confluent Caco-2 cells from Box 2 by rinsing the cells with 5 mL of warm PBS twice after aspiration of the culture medium.
- (ii) Remove PBS, add 1 mL of 0.25% trypsin/1 mM EDTA and incubate the flask in a humidified CO₂ incubator at 37 °C for 10 min.
- (iii) Add 9 mL of warm Caco-2 culture medium and collect the cell suspension by pipetting in a 15 mL sterile conical tube.
- (iv) Centrifuge the tube at 300g at 4 °C for 3 min and remove supernatant to obtain a cell pellet.
- (v) Resuspend the cell pellet in 1 mL of Caco-2 culture medium and count the cell number using a hemocytometer under a phase-contrast microscope.
- (vi) Adjust the density of the dissociated Caco-2 cells to 1×10^7 cells/mL with Caco-2 culture medium.

(B) Preparation of human organoid cells for seeding

- (i) Remove organoid culture medium by vacuum suction and add 500 μL of ice-cold Cell Recovery solution in each well that contains fully grown organoids in a 24-well plate from Box 5.

▲ CRITICAL STEP Typically, a well containing fully grown organoids (~300 organoids) gives enough dissociated cells for seeding one gut-on-a-chip or one Transwell insert.

- (ii) Using a P1000 micropipette, mechanically break Matrigel domes down for 5 s. Then, collect organoid suspension in a 15 mL conical tube.
- (iii) Centrifuge at 100g at 4 °C for 5 min and remove supernatant, while leaving up to 500 µL of the cell layer if there is no clear cell pellet layer with a cloudy Matrigel gradient.
- (iv) Add 1 mL of warm TrypLE Express solution containing 10 µM Y-27632 (final concentration) and resuspend the cell pellet by pipetting with a P1000 micropipette.
- (v) Incubate the cell suspension in a 37 °C water bath for 5 min.
- (vi) Add 5 mL of warm PBS and pipette aggressively using the P1000 micropipette until the cell suspension becomes turbid without noticeable cell clumps.
- (vii) Filter the cell suspension through a cell strainer (cutoff 100 µm) to remove Matrigel debris and large cell clumps.
- (viii) Centrifuge the tube at 300g at 4 °C for 3 min and resuspend in organoid culture medium depleted of A8301 but containing 10 µM Y-27632 (final concentration). It is recommended that 20 µL of organoid culture medium be used for resuspension of a cell pellet harvested from one well (i.e., use 120 µL of organoid culture medium when six wells were harvested).
- (ix) Adjust the density of viable cells to 1×10^7 cells/mL with organoid culture medium depleted of A8301 but containing 10 µM Y-27632 (final concentration). Perform a viability estimation with a hemocytometer by mixing 10 µL of the cell suspension and 10 µL of Trypan blue and observing the cells under a microscope.

? TROUBLESHOOTING

Formation of a 2D cell monolayer ● Timing 2–3 d

- 9 Seed the harvested cells from Step 8 in an ECM-coated gut-on-a-chip or on the Transwell insert of a hybrid chip. Then, culture the cells to form a confluent 2D monolayer prior to inducing 3D morphogenesis. For the gut-on-a-chip experiment, follow option A. For the hybrid chip experiment, follow option B.

(A) Formation of a 2D cell monolayer in a gut-on-a-chip

- (i) Remove the outlet tubing connected to the upper microchannel from the device, open the bypass tubing connected to the inlet of the upper microchannel and close both inlet and outlet of the lower microchannel using binder clips.
- (ii) Introduce 20 µL of the cell suspension from Step 8 to the open hole of the upper microchannel using a P100 or P20 micropipette.
- (iii) Close the bypass tubing of the upper microchannel. Then carefully reconnect the outlet tubing to the open port of the outlet of the upper microchannel while keeping the tubing open. Close the outlet tubing reconnected to the upper channel slowly using a binder clip.
- (iv) Confirm under a microscope if the cell suspension is uniformly dispersed across the upper microchannel.
! CAUTION Carry the device horizontally after a cell seeding by balancing the level. Avoid any physical shock that may perturb the cell distribution in the microchannel.
- (v) Incubate the device in a humidified CO₂ incubator at 37 °C. Caco-2 cells are attached in 1 h, while human organoid cells take ~3 h for attachment.

? TROUBLESHOOTING

- (vi) When there is not enough time to continue the procedure or cell attachment does not look good under the microscope, extend the attachment time overnight.
- (vii) Carefully introduce fresh medium and remove unbound cells using a syringe plunger. Handle each microchannel independently to avoid pressure induced damage to the cell monolayer. Alternatively, the device can be hooked up to a syringe pump that can be used to flow fresh medium.
- (viii) Inspect under the microscope if unbound cells are washed out.

? TROUBLESHOOTING

- (ix) Hook up the syringe linked to the upper microchannel of the gut-on-a-chip to a syringe pump placed inside the humidified CO₂ incubator. Start perfusion of culture medium at 30 µL/h. In the case of culturing intestinal organoid cells in a gut-on-a-chip, change the medium into organoid culture medium including A8301 but without Y-27632 at this point.

! CAUTION Make sure the diameter of the syringe is applied to the setting of the syringe pump before running a microfluidic culture.

- (x) To maintain the intestinal epithelial cell culture on-chip, keep perfusing the culture medium to the upper microchannel until the cells form a confluent 2D monolayer, which you can assess via a phase contrast microscope. Replenish the medium filled in the lower microchannel every day by manually flowing fresh medium while the continuous flow is applied to the upper microchannel. Caco-2 and organoid epithelial cells form epithelial monolayers in ~24–36 h (Fig. 3a) and 2–3 d (Fig. 3d), respectively.

(B) Formation of a 2D cell monolayer on a Transwell insert

- (i) Adjust the cell density to 2×10^6 cells/mL with a corresponding medium.
- (ii) Add 100 μ L of the cell suspension to the insert and 500 μ L of the culture medium to the basolateral well of the Transwell, and incubate the Transwell-containing plate in a 37 °C CO₂ incubator for 16 h.
- (iii) Inspect cell attachment under a microscope.
- (iv) Remove culture medium from both the apical and basolateral compartments and add the same amount of fresh medium (i.e., 100 μ L to the apical and 500 μ L to the basolateral) after cell attachment. When intestinal organoids are cultured on a Transwell insert, use organoid culture medium including A8301 but without Y-27632.
- (v) To maintain the intestinal epithelial cell culture on the Transwell insert, change the culture medium every other day in both apical and basolateral compartments until the cells form a confluent 2D monolayer. An epithelial monolayer of Caco-2 or organoid epithelial cells is formed in ~2 days and 5 days (Fig. 4a), respectively.

Induction of 3D morphogenesis in vitro ● Timing 3–5 d

- 10 Once confluent 2D monolayers are formed, 3D morphogenesis can be induced. For a gut-on-a-chip experiment, follow option A. For a hybrid chip experiment, follow option B.

(A) Induction of in vitro 3D morphogenesis in a gut-on-a-chip

- (i) Flow the corresponding culture medium (for Caco-2 or organoid cells) into the lower microchannel to induce intestinal morphogenesis in a gut-on-a-chip (Fig. 3a ‘Flow, AP’). Flow medium into both upper and lower microchannels using a syringe pump at 50 μ L/h volumetric flow rate to establish 0.02 dyne/cm² of shear stress in a 500- μ m-height microchannel (Extended Data Fig. 1c)¹⁰.

▲ CRITICAL STEP The volumetric flow rate can vary depending on the geometric configuration of the microchannels in a gut-on-a-chip.

- (ii) Connect a Flexcell connector to the vacuum chamber ports in the gut-on-a-chip when the dual microfluidic flow is initiated. Start applying stretching motions to the cells growing in the gut-on-a-chip using a Flexcell module with 10% of cell strain and 0.15 Hz of frequency.
- (iii) Maintain this culture setup for at least 2–3 d. Typically, morphogenesis occurs after this point (Fig. 3a ‘Stretching, flow, AP and BL’).

? TROUBLESHOOTING

- (iv) If human intestinal organoids are cultured in a gut-on-a-chip, change the organoid culture medium into organoid differentiation medium after 3D morphogenesis is observed under the microscope to induce cell differentiation.

(B) Induction of in vitro 3D morphogenesis on a Transwell insert

- (i) When intestinal morphogenesis is to be induced on a Transwell insert, transfer the Transwell insert that contains a cell monolayer into a hybrid chip. The insert can be physically inserted into the punched hole of the device (Fig. 1 ‘Culture platforms’ and 4a).
- (ii) Apply epoxy glue around the Transwell insert at the interface with the PDMS part to avoid any leakage if needed. Cure the epoxy glue at RT in a biosafety cabinet for 5 min.
- (iii) Connect a syringe containing an appropriate culture medium (for Caco-2 or organoid culture) to the hybrid chip and start to flow at 30 μ L/h.
- (iv) Change the medium in the apical compartment of the Transwell insert every other day using a micropipette. Morphogenesis occurs after 2–3 d in the hybrid chip (Fig. 4a).

Characterization of a 3D epithelial layer ● Timing 3 d

- 11 Place the device on a microscope to image the established 3D epithelium. For live-cell imaging, a phase-contrast, DIC or bright-field microscope can be applied.

- 12 Perform fluorescence live-cell imaging to monitor the contour of 3D epithelial microarchitecture grown on either a gut-on-a-chip or a hybrid chip using a membrane dye (e.g., CellMask; Fig. 3f 'Plasma membrane'). Dilute the CellMask solution at 1:500 in a corresponding culture medium. Transfer the diluted solution to two 1 mL syringes in case of the gut-on-a-chip and one syringe in case of the hybrid chip. Detach the syringes that were used for culture and attach the CellMask-containing syringes to the chips. Slowly fill the microchannels and flow the CellMask-containing medium at 30 $\mu\text{L}/\text{h}$ in a CO_2 incubator at 37°C for 10 min. For the apical compartment of the hybrid chip, remove the culture medium and add 100 μL of the CellMask-containing medium. Change the CellMask syringes back to the culture-medium-containing syringes to wash the CellMask solution out briefly. Perform fluorescence imaging using a confocal microscope. Culture may be resumed after the imaging when the cells are needed for other experiments.
- 13 To perform immunofluorescence staining and imaging, fix the cells by introducing 30 μL of 4% PFA solution to both microchannels in case of the gut-on-a-chip at RT for 15 min. At this point, a micropipette can be used to introduce solutions instead of using syringes, following the same method described in Step 7A(ii)–(v). For a hybrid chip, separate the Transwell insert from the hybrid chip and transfer the insert to a 24-well plate for easier handling. Add 100 μL of 4% PFA to the apical compartment of a Transwell insert. Incubate the Transwell insert at RT for 15 min.
- 14 Wash the cells by flowing 100 μL of PBS through the microchannels in case of the gut-on-a-chip. With the Transwell, remove PFA by pipetting and add 100 μL of PBS to the apical side of the insert. Repeat three times for the Transwell insert.
- 15 Permeabilize the cells by introducing 30 μL of the permeabilization solution (see 'Reagent setup') to both the upper and lower microchannels of the gut-on-a-chip. Or, add 100 μL of the permeabilization solution to the apical compartment of the Transwell insert after removing PBS. Incubate the devices at RT for 30 min.
- 16 Repeat Step 14.
- 17 Block the cells to prevent nonspecific binding by introducing 30 μL of the blocking solution (see 'Reagent setup') to both the upper and lower microchannels of the gut-on-a-chip. Or, add 100 μL of the blocking solution to the apical side of the Transwell insert after removing PBS. For the gut-on-a-chip, leave the pipette tips inserted in the gut-on-a-chip to prevent evaporation from the inlet and outlet ports. Incubate at RT for 1 h or at 4 °C for overnight.
- 18 Prepare a primary antibody solution (see 'Reagent setup'). Introduce 30 μL of the primary antibody solution to both the upper and lower microchannels of the gut-on-a-chip. Incubate at RT for 3 h and at 4 °C for overnight, sequentially. Leave the pipette tips inserted in the gut-on-a-chip to prevent evaporation from the inlet and outlet ports. In the case of the Transwell, add 100 μL of the primary antibody solution to the apical side of an insert and incubate at RT for 3 h or at 4 °C for overnight.
- 19 Repeat Step 14.
- 20 Prepare a secondary antibody solution (see 'Reagent setup') and follow the method described in Step 18.
! CAUTION From this step onward, the device setup must be covered by aluminum foil to avoid photobleaching.
- 21 Repeat Step 14.
- 22 Prepare F-actin and nuclei counterstaining solutions, individually, or in a mix (see 'Reagent setup'). Introduce 30 μL of the F-actin and/or nuclei staining solution to both the upper and the lower microchannels of the gut-on-a-chip. Add 100 μL of the counterstaining solution mix to the Transwell insert. Incubate at RT under light protection for 30 min.
- 23 Repeat Step 14.
- 24 Perform fluorescence imaging using a confocal microscope. The goal of this imaging step is to achieve structural, functional or locational information by visualizing the shape or the localization of the target cells. To observe the structure of the 3D epithelial layers, a 25 \times long-distance objective is typically used. Adjust parameters (e.g., laser power, gain, pinhole, scanning speed) to obtain optimal fluorescence signals.

? TROUBLESHOOTING

Troubleshooting

Troubleshooting advice can be found in Table 1.

Table 1 | Troubleshooting table

Step	Problem	Possible reason	Solution
5A(vi)	Fluoropolymer-coated polyester film does not stick to a PDMS porous membrane layer	The silicon wafer for making the porous membrane is not hydrophobic enough	Silanize the silicon wafer again to increase the hydrophobicity (Box 1)
5A(xi)	The upper PDMS layer does not bond to the PDMS porous membrane layer	Treatment with oxygen plasma is not sufficient	Increase the treatment time with oxygen plasma
	The membrane layer covering the vacuum chambers or ports is not removed easily	The entire surface of the upper PDMS part does not contact the porous membrane layer completely The porous PDMS membrane is too thick	Tap the top part after placing the upper PDMS part on the porous membrane layer. Make sure no air bubbles are trapped between two layers Increase the incubation time on the bench when making the membrane layer to make sure that the setup with a weight does not freely move before transferring to a dry oven for curing Increase the amount of weight that presses uncured PDMS when making a membrane layer
5A(xviii)	EtOH leaks into vacuum chambers	Poor alignment or bonding of device parts may happen	Inspect the alignment before transferring the aligned PDMS parts to a drying oven. When the alignment is poorly performed, re-try aligning the PDMS parts
5A(xix)	EtOH leaks into vacuum chambers	Bonding between the upper and the lower PDMS parts is weak	Increase the time and intensity of corona treatment. Inspect whether the corona treater has weakened power by holding the corona treater on any metal surface and observing the beam strength
	EtOH does not come through the membrane layer or there is too much pressure when perfusing the EtOH	The PDMS membrane layer may have unopen pores with the cured PDMS residue forming a thin film over the pore area	Increase the incubation time when making the membrane layer. Make sure that the setup does not freely move before transferring to a drying oven for curing Increase the weight that presses uncured PDMS solution when making the membrane layer to produce open pores in the PDMS membrane
8B(ix)	Cell number is lower than expected	Organoids may not be healthy; dead cells comprise >20% of the total cell number	Inspect whether organoids cultured in the Matrigel grow well. If not, try to optimize organoid medium conditions Inspect whether the dissociation process decreases organoid cell viability. Make sure TrypLE Express solution containing Y-27632 is warmed up at 37 °C before use
		Organoid dissociation is not fully performed (i.e., there are too many cell clumps larger than 100 μm)	Increase the pipetting time during the cell dissociation Tap the 15 mL conical tube every 1 min during the TrypLE Express treatment Pipette more aggressively. Try touching the pipette tip to the wall of the 15 mL conical tube when pushing the pipette plunger
9A(v)	Cell attachment on the coated membrane surface is poorly performed	ECM coating is not properly performed	Check if any air bubbles are generated during the coating step. Avoid air bubbles by replenishing the coating solution gently Wash unbound residual ECM more gently. Try to use a syringe pump and handle the microchannels one-at-a-time
		Cells are not sufficiently viable	Check the cell viability after the cell dissociation by Trypan blue staining. It is desired to have at least 80% cell viability
9A(viii)	Cells are not washed away	Washing of unbound cells is insufficient	Try to wash more aggressively. Make a mild pulse when pushing the syringe plunger
	Too many cells are washed away	Cell attachment is inadequate	Check if the surface activation and the ECM coating are properly performed Check if cell viability is at least 80% or higher
		There may be pressure from the lower to the upper microchannel during the washing step	Handle the microchannels one at a time by clamping the tubing sequentially

Table continued

Table 1 (continued)

Step	Problem	Possible reason	Solution
10A(iii)	Morphogenesis is not consistent along the microchannel	Membrane pores may not be uniformly open across the microchannel Air bubbles may be staying in the microchannels for a long time	Check if the membrane layer is thin enough over the entire area. Make sure the membrane fabrication process is properly performed Check the formation of air bubbles intermittently. Remove air bubbles by replenishing culture medium using a syringe pump. It is advisable to handle the microchannels one at a time
24	Fluorescence signal is not found or not clear	Antibody quality may be bad Staining procedure may need to be optimized	Avoid repeated freeze-thaw cycles of the antibody stocks Test other antibodies purchased from a different vendor Try to increase antibody concentration Replenish fresh antibody solution during the staining period. However, too much secondary antibody may give a false-positive signal via nonspecific binding

Timing

Steps 1–5, microfabrication: 2–4 d
 Step 6, surface activation and ECM coating for Caco-2 culture: 2 h to 1 d
 Step 7, surface activation and ECM coating for organoid culture: 1 d
 Step 8, cell preparation for seeding: 30 min
 Step 9, formation of a 2D cell monolayer: 2–3 d
 Step 10, induction of 3D morphogenesis in vitro: 3–5 d
 Steps 11–24, characterization of a 3D epithelial layer: 3 d

Anticipated results

Our protocol produces reproducible results enabling spontaneous intestinal morphogenesis and 3D epithelial structure in a gut-on-a-chip (Fig. 3) or a Transwell-embedded hybrid chip (Fig. 4). Within 3 d of introducing basolateral fluid flow, a condensation of epithelial cells is sporadically found across the microchannel (Fig. 3a,d), followed by the continuous protrusion of 3D epithelial cell layers toward the lumen reaching 120–150 μm in height (Figs. 3 and 4)^{1,2}, up to a couple of hundred micrometers⁴. This morphological change can be monitored using a phase-contrast, DIC or any bright-field microscopy. It is also plausible to apply real-time imaging modalities by using live-cell staining dyes that target produced mucus on the apical membrane (Fig. 1 ‘Intestinal physiology’) or the plasma membrane of a living epithelial layer (Fig. 3f, right).

It has been noted that intestinal epithelial cells cultured in a gut-on-a-chip have a taller epithelial height compared with the epithelial protrusion established on a Transwell insert in a hybrid chip. For instance, when the same organoid cells are cultured on the Transwell insert of a hybrid chip and morphogenesis is induced, the epithelial height is observed to be $\sim 70 \mu\text{m}$ (Fig. 4c), compared with $\sim 150 \mu\text{m}$ of epithelial height established in a gut-on-a-chip (Fig. 3f)¹². We postulate that the static conditions in the apical compartment may limit the 3D growth of the cell layer. Also, a lack of physical deformation that can induce cellular proliferation in a hybrid chip system may be another factor that makes a substantial difference in height compared to the 3D epithelial morphology in a gut-on-a-chip. Thus, the Transwell-based intestinal morphogenesis may be greatly advanced if the culture system could support continuous flow in both the apical and basolateral compartments as well as including the mechanical dynamics of normal growth conditions.

One of the advanced features of the gut-on-a-chip platform is the feasibility of in situ visualization using various imaging modalities. For instance, we can adapt conventional laser-scanning confocal microscopy to verify that the fully grown intestinal epithelium shows differentiated and spatially organized cell phenotypes (Fig. 3f, see refs. ^{2,12}). An intestinal organoid-derived epithelial layer can be differentiated by applying organoid differentiation medium as detailed in the Procedure^{23,46}. Importantly, different cell types are anticipated to be localized in physiologically relevant locations².

In our previous study² that used Caco-2 cells, we showed that absorptive (sucrase-isomaltase), goblet (mucin (MUC) 2, MUC3 and MUC17) and enteroendocrine markers (chromogranin A) may be detected in the villus area, whereas the Paneth cell marker (lysozyme) is strongly expressed in the basal crypt region. We also visually verified that regional differentiation markers such as keratin 20 (KRT20), villin, carcinoembryonic antigen-related cell adhesion molecule 1 (CEACAM1) and cytochrome P450 3A4 (CYP3A4) were considerably expressed in the villus region, suggesting cyto-differentiation of the 3D epithelial layers in the gut-on-a-chip. In this protocol, we demonstrate the localization of representative markers for goblet cells (MUC2), stem cells (leucine-rich repeat-containing G-protein-coupled receptor 5, LGR5) and the formation of tight junctions (zonula occludens-1, ZO-1) in the 3D epithelial layer in vitro (Figs. 1 and 3c,f). The expression, and localization along the crypt–villus axis, of other lineage-associated intestinal epithelial markers can also be visualized in a microengineered 3D intestinal epithelium.

Furthermore, visualization technologies including real-time imaging allow us to monitor the growth of living gut bacteria (Fig. 1) that occupy a spatial niche at an intestinal crevicular space. This visualization of a 3D epithelial microarchitecture re-created in a gut-on-a-chip will be extremely useful to investigate host–microbiome interactions during various lesion-specific pathological interactions when we apply this technology to build patient-specific models of GI diseases such as intestinal inflammation, Crohn's disease or colorectal cancer (Fig. 1). Combining immunofluorescence imaging with targeted RNA visualization (e.g., fluorescence in situ hybridization^{47,48}) may also provide an innovative approach to visually map the host transcriptomes, proteomes and microbiomes in a gut-on-a-chip at various pathophysiological microenvironments.

The formed 3D epithelial layers using both a gut-on-a-chip and a hybrid chip have regenerative potential, confirmed in various studies^{1,2,4,6,12,15,19}. For instance, when the basolateral flow is ceased, established 3D epithelial microstructure is destroyed, which can regenerate once the basolateral medium flow is resumed⁴. When the proliferative cells were marked with EdU pulse (a proliferation marker that incorporates into newly synthesized DNA), EdU-positive cells were predominantly found near the basal crypt area, which could migrate upward to the microengineered villous tip in a couple of hours, demonstrating the active regeneration of Caco-2 epithelium in the gut-on-a-chip². The 3D epithelial structure can also be destroyed by adding a barrier-disrupting chemical such as dextran sodium sulfate (DSS), in which a DSS-free culture medium could restore the 3D epithelial structure in a gut-on-a-chip⁵. This evidence supports the robustness of our protocol, which could be used in longitudinal studies of intestinal epithelial biology, intestinal homeostasis and wound healing mechanisms. The regenerative potential of the microengineered 3D epithelial layers can be further exploited to study human intestinal diseases that involve villous atrophy or crypt shortening in celiac disease or inflammatory bowel disease¹².

The in vitro intestinal microenvironment may be manipulated by co-culturing other types of cells. Lymphatic or vascular endothelial cells can be cultured on the opposite side of the porous membrane, and gut bacteria can be cultured on top of the formed 3D intestinal epithelium. Methods to manipulate intestinal microenvironment in a gut-on-a-chip, including co-culture of gut bacteria (Fig. 1), were discussed in earlier publications^{44,49}. The reconstituted microenvironment is anticipated to be used for various applications, including drug testing, fundamental mechanistic studies and disease modeling, as mentioned earlier. Desired assays can be performed by either harvesting supernatant and cells or imaging the cells using live-cell dyes or fixative for further immunofluorescence imaging.

Taking these findings together, we provide a robust and reliable protocol to regenerate 3D intestinal epithelial layers in vitro using a gut-on-a-chip or a hybrid chip device with a Transwell insert. The formed 3D epithelial structure will enable reconstitution of a more physiological intestinal microenvironment in vitro. Applications of the formed intestinal architecture in various biomedical studies may bring about translational research outcomes.

Reporting Summary

Further information on research design is available in the Nature Research Reporting Summary linked to this article.

Data availability

Data presented in the below listed figure panels are available from the original references as listed in the figure legends. All the other data were generated for this article. Any raw data are available for

research purposes from the corresponding author upon request. Intestinal organoid lines used in this paper are available from the corresponding author upon request, under a material transfer agreement between institutions.

References

1. Kim, H. J., Huh, D., Hamilton, G. & Ingber, D. E. Human gut-on-a-chip inhabited by microbial flora that experiences intestinal peristalsis-like motions and flow. *Lab Chip* **12**, 2165–2174 (2012).
2. Kim, H. J. & Ingber, D. E. Gut-on-a-Chip microenvironment induces human intestinal cells to undergo villus differentiation. *Integr. Biol.* **5**, 1130–1140 (2013).
3. Kim, H. J., Li, H., Collins, J. J. & Ingber, D. E. Contributions of microbiome and mechanical deformation to intestinal bacterial overgrowth and inflammation in a human gut-on-a-chip. *Proc. Natl Acad. Sci. USA* **113**, E7–15 (2016).
4. Shin, W., Hinojosa, C. D., Ingber, D. E. & Kim, H. J. Human intestinal morphogenesis controlled by transepithelial morphogen gradient and flow-dependent physical cues in a microengineered gut-on-a-chip. *iScience* **15**, 391–406 (2019).
5. Shin, W. & Kim, H. J. Intestinal barrier dysfunction orchestrates the onset of inflammatory host-microbiome cross-talk in a human gut inflammation-on-a-chip. *Proc. Natl Acad. Sci. USA* **115**, E10539–E10547 (2018).
6. Maurer, M. et al. A three-dimensional immunocompetent intestine-on-chip model as in vitro platform for functional and microbial interaction studies. *Biomaterials* **220**, 119396 (2019).
7. Tan, H.-Y. et al. A multi-chamber microfluidic intestinal barrier model using Caco-2 cells for drug transport studies. *PLoS ONE* **13**, e0197101 (2018).
8. Ettayebi, K. et al. Replication of human noroviruses in stem cell-derived human enteroids. *Science* **353**, 1387–1393 (2016).
9. Gazzaniga, F. S. et al. Harnessing colon chip technology to identify commensal bacteria that promote host tolerance to infection. *Front. Cell Infect. Microbiol.* **11**, 638014 (2021).
10. Shin, W. et al. A robust longitudinal co-culture of obligate anaerobic gut microbiome with human intestinal epithelium in an anoxic–oxic interface-on-a-chip. *Front. Bioeng. Biotechnol.* **7**, 13 (2019).
11. Bein, A. et al. Microfluidic organ-on-a-chip models of human intestine. *Cell Mol. Gastroenterol. Hepatol.* **5**, 659–668 (2018).
12. Shin, Y. C. et al. Three-dimensional regeneration of patient-derived intestinal organoid epithelium in a physiodynamic mucosal interface-on-a-chip. *Micromachines* **11**, 633 (2020).
13. Shin, W. et al. Robust formation of an epithelial layer of human intestinal organoids in a polydimethylsiloxane-based gut-on-a-chip microdevice. *Front. Med. Technol.* **2**, 2 (2020).
14. Sontheimer-Phelps, A. et al. Human colon-on-a-chip enables continuous in vitro analysis of colon mucus layer accumulation and physiology. *Cell Mol. Gastroenterol. Hepatol.* **9**, 507–526 (2020).
15. Chong, H. B., Youn, J., Shin, W., Kim, H. J. & Kim, D. S. Multiplex recreation of human intestinal morphogenesis on a multi-well insert platform by basolateral convective flow. *Lab Chip* **21**, 3316–3327 (2021).
16. Zhang, B. & Radisic, M. Organ-on-a-chip devices advance to market. *Lab Chip* **17**, 2395–2420 (2017).
17. Ribas, J., Pawlikowska, J. & Rouwkema, J. Microphysiological systems: analysis of the current status, challenges and commercial future. *Microphysiol. Syst.* **2**, 10 (2018).
18. Allwardt, V. et al. Translational roadmap for the organs-on-a-chip industry toward broad adoption. *Bioengineering* **7**, 112 (2020).
19. Shin, W., Su, Z., Yi, S. S. & Kim, H. J. Single-cell transcriptomics elucidates in vitro reprogramming of human intestinal epithelium cultured in a physiodynamic gut-on-a-chip. Preprint at *bioRxiv* <https://doi.org/10.1101/2021.09.01.458444> (2021).
20. Wallace, K. N., Akhter, S., Smith, E. M., Lorent, K. & Pack, M. Intestinal growth and differentiation in zebrafish. *Mech. Dev.* **122**, 157–173 (2005).
21. Kim, B. M., Mao, J., Taketo, M. M. & Shivdasani, R. A. Phases of canonical Wnt signaling during the development of mouse intestinal epithelium. *Gastroenterology* **133**, 529–538 (2007).
22. Theodosiou, N. A. & Tabin, C. J. Wnt signaling during development of the gastrointestinal tract. *Dev. Biol.* **259**, 258–271 (2003).
23. Sato, T. et al. Long-term expansion of epithelial organoids from human colon, adenoma, adenocarcinoma, and Barrett's epithelium. *Gastroenterology* **141**, 1762–1772 (2011).
24. Sato, T. & Clevers, H. Growing self-organizing mini-guts from a single intestinal stem cell: mechanism and applications. *Science* **340**, 1190–1194 (2013).
25. Shin, W. et al. Spatiotemporal gradient and instability of Wnt induce heterogeneous growth and differentiation of human intestinal organoids. *iScience* **23**, 101372 (2020).
26. Bartfeld, S. & Clevers, H. Organoids as model for infectious diseases: culture of human and murine stomach organoids and microinjection of *Helicobacter pylori*. *J. Vis. Exp.* **105**, e53359 (2015).
27. Forbester, J. L. et al. Interaction of *Salmonella enterica* serovar Typhimurium with intestinal organoids derived from human induced pluripotent stem cells. *Infect. Immun.* **83**, 2926–2934 (2015).
28. Hinman, S. S., Wang, Y., Kim, R. & Allbritton, N. L. In vitro generation of self-renewing human intestinal epithelia over planar and shaped collagen hydrogels. *Nat. Protoc.* **16**, 352–382 (2021).

29. Creff, J. et al. Fabrication of 3D scaffolds reproducing intestinal epithelium topography by high-resolution 3D stereolithography. *Biomaterials* **221**, 119404 (2019).
30. Verhulsel, M. et al. Developing an advanced gut on chip model enabling the study of epithelial cell/fibroblast interactions. *Lab Chip* **21**, 365–377 (2021).
31. Nikolaev, M. et al. Homeostatic mini-intestines through scaffold-guided organoid morphogenesis. *Nature* **585**, 574–578 (2020).
32. Brassard, J. A., Nikolaev, M., Hubscher, T., Hofer, M. & Lutolf, M. P. Recapitulating macro-scale tissue self-organization through organoid bioprinting. *Nat. Mater.* **20**, 22–29 (2021).
33. Valenta, T. et al. Wnt ligands secreted by subepithelial mesenchymal cells are essential for the survival of intestinal stem cells and gut homeostasis. *Cell Rep.* **15**, 911–918 (2016).
34. Regan, M. C., Flavin, B. M., Fitzpatrick, J. M. & O’Connell, P. R. Stricture formation in Crohn’s disease: the role of intestinal fibroblasts. *Ann. Surg.* **231**, 46–50 (2000).
35. Roulis, M. & Flavell, R. A. Fibroblasts and myofibroblasts of the intestinal lamina propria in physiology and disease. *Differentiation* **92**, 116–131 (2016).
36. Wang, Y. et al. Formation of human colonic crypt array by application of chemical gradients across a shaped epithelial monolayer. *Cell Mol. Gastroenterol. Hepatol.* **5**, 113–130 (2018).
37. Goke, M., Kanai, M. & Podolsky, D. K. Intestinal fibroblasts regulate intestinal epithelial cell proliferation via hepatocyte growth factor. *Am. J. Physiol.* **274**, G809–818 (1998).
38. Powell, D. W., Pinchuk, I. V., Saada, J. I., Chen, X. & Mifflin, R. C. Mesenchymal cells of the intestinal lamina propria. *Annu. Rev. Physiol.* **73**, 213–237 (2011).
39. Pappenheimer, J. R. & Michel, C. C. Role of villus microcirculation in intestinal absorption of glucose: coupling of epithelial with endothelial transport. *J. Physiol.* **553**, 561–574 (2003).
40. Agace, W. W. T-cell recruitment to the intestinal mucosa. *Trends Immunol.* **29**, 514–522 (2008).
41. Dutton, J. S., Hinman, S. S., Kim, R., Wang, Y. & Allbritton, N. L. Primary cell-derived intestinal models: recapitulating physiology. *Trends Biotechnol.* **37**, 744–760 (2019).
42. van Meer, B. J. et al. Small molecule absorption by PDMS in the context of drug response bioassays. *Biochem. Biophys. Res. Commun.* **482**, 323–328 (2017).
43. Gokaltun, A., Kang, Y. B. A., Yarmush, M. L., Usta, O. B. & Asatekin, A. Simple surface modification of poly (dimethylsiloxane) via surface segregating smart polymers for biomicrofluidics. *Sci. Rep.* **9**, 7377 (2019).
44. Huh, D. et al. Microfabrication of human organs-on-chips. *Nat. Protoc.* **8**, 2135–2157 (2013).
45. Stewart, C. J., Estes, M. K. & Ramani, S. Establishing human intestinal enteroid/organoid lines from preterm infant and adult tissue. *Methods Mol. Biol.* **2121**, 185–198 (2020).
46. Kasendra, M. et al. Development of a primary human Small Intestine-on-a-Chip using biopsy-derived organoids. *Sci. Rep.* **8**, 2871 (2018).
47. Ambrosini, Y. M. et al. Recapitulation of the accessible interface of biopsy-derived canine intestinal organoids to study epithelial–luminal interactions. *PLoS ONE* **15**, e0231423 (2020).
48. Silahtaroglu, A. N. et al. Detection of microRNAs in frozen tissue sections by fluorescence in situ hybridization using locked nucleic acid probes and tyramide signal amplification. *Nat. Protoc.* **2**, 2520–2528 (2007).
49. Shin, W. & Kim, H. J. Pathomimetic modeling of human intestinal diseases and underlying host-gut microbiome interactions in a gut-on-a-chip. *Methods Cell Biol.* **146**, 135–148 (2018).

Acknowledgements

This work was supported in part by the National Cancer Institute of the National Institutes of Health (NIH/NCI) F99/K00 Predoctoral to Postdoctoral Transition Award (K00CA245801 to W.S.), Asan Foundation Biomedical Science Scholarship (W.S.), Mogam Science Scholarship (W.S.), Technology Impact Award of the Cancer Research Institute (UTA18-000889 to H.J.K.), the NIH/NCI (R21CA236690 to H.J.K.) and the Leona M. & Harry B. Helmsley Charitable Trust (1912-03604 to H.J.K.).

Author contributions

W.S. and H.J.K. designed and performed the experiments, analyzed the data, generated the figures and wrote and revised the manuscript.

Competing interests

The authors declare no competing interests.

Additional information

Extended data is available for this paper at <https://doi.org/10.1038/s41596-021-00674-3>.

Supplementary information The online version contains supplementary material available at <https://doi.org/10.1038/s41596-021-00674-3>.

Correspondence and requests for materials should be addressed to Hyun Jung Kim.

Peer review information *Nature Protocols* thanks Stephanie Descroix and the other, anonymous, reviewer(s) for their contribution to the peer review of this work.

Reprints and permissions information is available at www.nature.com/reprints.

Publisher’s note Springer Nature remains neutral with regard to jurisdictional claims in published maps and institutional affiliations.

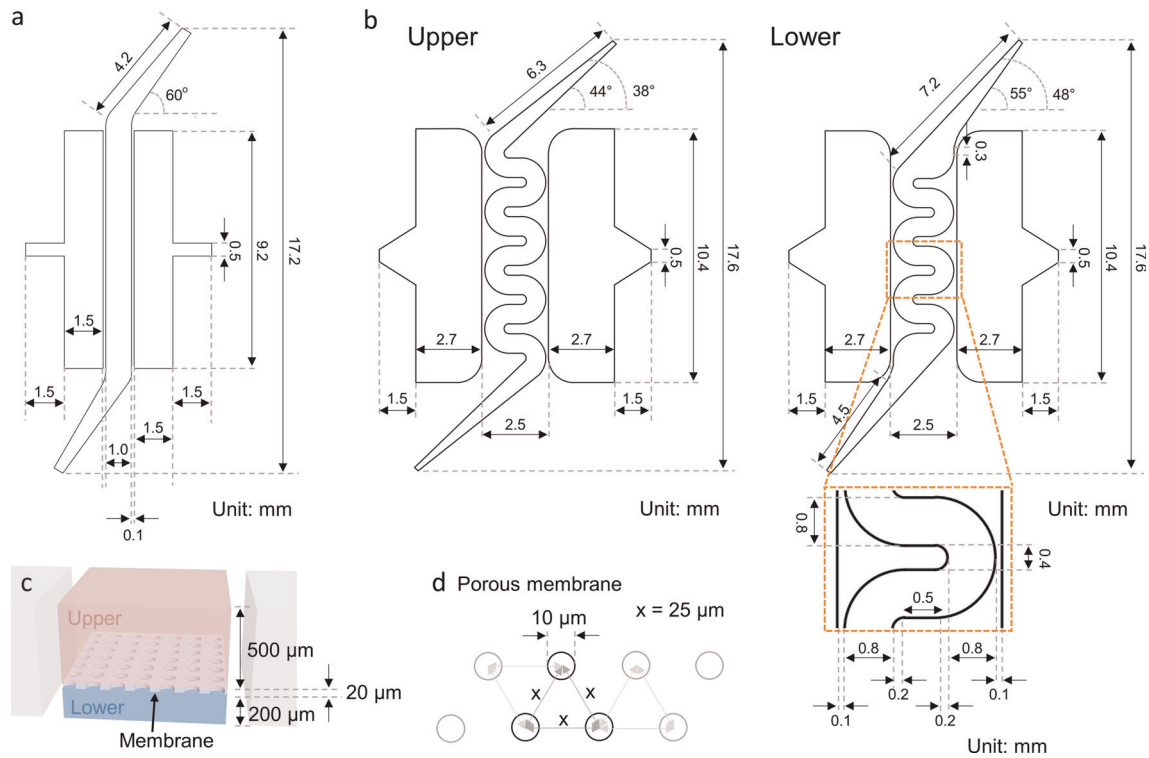
Received: 7 May 2021; Accepted: 25 November 2021;
Published online: 2 February 2022

Related links**Key references using this protocol**

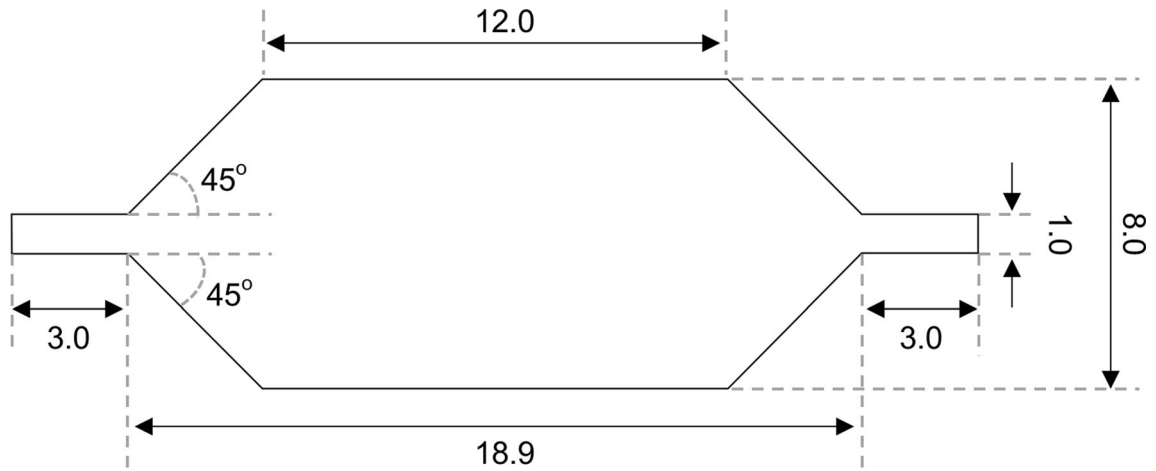
Shin, W. et al. *iScience* **15**, 391–406 (2019): <https://doi.org/10.1016/j.isci.2019.04.037>

Kim, H. J. & Ingber, D. E. *Integr. Biol.* **5**, 1130–1140 (2013): <https://doi.org/10.1039/C3IB40126J>

Kim, H. J. et al. *Lab Chip* **12**, 2165–2174 (2012): <https://doi.org/10.1039/C2LC40074J>

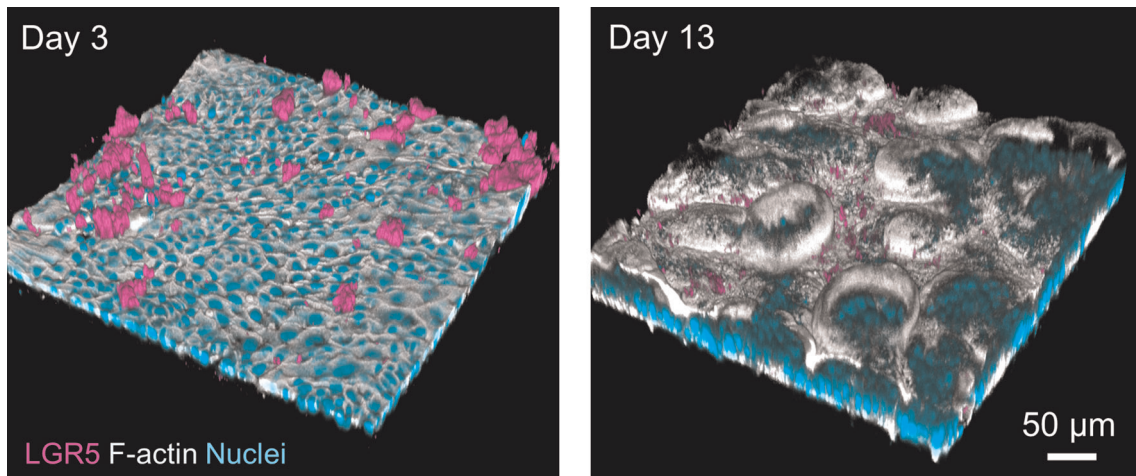


Extended Data Fig. 1 | Dimensions of the linear and the convoluted gut-on-a-chip designs. a,b, Dimensions of the linear gut-on-a-chip (**a**) and the convoluted gut-on-a-chip (**b**). The design of the upper and the lower microchannels of the linear gut-on-a-chip is identical. In contrast, the design of the upper and the lower microchannel of the nonlinear convoluted gut-on-a-chip has a slightly different geometry. **c,** Height of the upper and the lower microchannels as well as the porous membrane of the gut-on-a-chip device. **d,** Dimensions and top-down view of the porous membrane. The individual circles indicate the pores of a membrane. This pattern can be used to make the membrane silicon mold that contains an array of micropillars (5 cm by 5 cm in x-y dimension of the pore array) with 20 μm height.



Unit: mm

Extended Data Fig. 2 | Dimensions of the hybrid chip. Dimensions of the hybrid chip. A biopsy puncher will be used to make a Transwell-insertable module (see Step 5B(i)).



Extended Data Fig. 3 | Expression of a stem cell marker LGR5. The fluorescence image visualizes the expression of LGR5 on the organoid epithelium cultured in a gut-on-a-chip at days 3 and 13. Nuclei (cyan) and F-actin (gray) are also shown. This figure is comparable to Fig. 3f, where the co-localization of LGR5 with MUC2 was independently visualized by removing the MUC2 signal. Adapted with permission from ref. ¹² under Creative Commons licence CC BY 4.0.

Reporting Summary

Nature Research wishes to improve the reproducibility of the work that we publish. This form provides structure for consistency and transparency in reporting. For further information on Nature Research policies, see our [Editorial Policies](#) and the [Editorial Policy Checklist](#).

Statistics

For all statistical analyses, confirm that the following items are present in the figure legend, table legend, main text, or Methods section.

n/a Confirmed

- The exact sample size (n) for each experimental group/condition, given as a discrete number and unit of measurement
- A statement on whether measurements were taken from distinct samples or whether the same sample was measured repeatedly
- The statistical test(s) used AND whether they are one- or two-sided
Only common tests should be described solely by name; describe more complex techniques in the Methods section.
- A description of all covariates tested
- A description of any assumptions or corrections, such as tests of normality and adjustment for multiple comparisons
- A full description of the statistical parameters including central tendency (e.g. means) or other basic estimates (e.g. regression coefficient) AND variation (e.g. standard deviation) or associated estimates of uncertainty (e.g. confidence intervals)
- For null hypothesis testing, the test statistic (e.g. F , t , r) with confidence intervals, effect sizes, degrees of freedom and P value noted
Give P values as exact values whenever suitable.
- For Bayesian analysis, information on the choice of priors and Markov chain Monte Carlo settings
- For hierarchical and complex designs, identification of the appropriate level for tests and full reporting of outcomes
- Estimates of effect sizes (e.g. Cohen's d , Pearson's r), indicating how they were calculated

Our web collection on [statistics for biologists](#) contains articles on many of the points above.

Software and code

Policy information about [availability of computer code](#)

Data collection

Data analysis

For manuscripts utilizing custom algorithms or software that are central to the research but not yet described in published literature, software must be made available to editors and reviewers. We strongly encourage code deposition in a community repository (e.g. GitHub). See the Nature Research [guidelines for submitting code & software](#) for further information.

Data

Policy information about [availability of data](#)

All manuscripts must include a [data availability statement](#). This statement should provide the following information, where applicable:

- Accession codes, unique identifiers, or web links for publicly available datasets
- A list of figures that have associated raw data
- A description of any restrictions on data availability

Data presented in these following figures are available from the cited original references; Figs. 1, "Cytodifferentiation", 3b, and 3c2; Figs. 1, "Intestinal physiology", "Disease modeling", 3c, and 3e5; Figs. 1, "Host-microbe co-culture" and 3d3; Figs. 3e and 3f12; Fig. 4c4. All the other data were generated for this article. Any raw data is available for research purposes from the corresponding author upon request. Intestinal organoid lines used in this paper are available from the corresponding author upon request, under a material transfer agreement between institutions.

Field-specific reporting

Please select the one below that is the best fit for your research. If you are not sure, read the appropriate sections before making your selection.

Life sciences Behavioural & social sciences Ecological, evolutionary & environmental sciences

For a reference copy of the document with all sections, see [nature.com/documents/nr-reporting-summary-flat.pdf](https://www.nature.com/documents/nr-reporting-summary-flat.pdf)

Life sciences study design

All studies must disclose on these points even when the disclosure is negative.

Sample size	We have repeated the protocol at least 10 times for each cell line and culture format that we used in the study
Data exclusions	No data were excluded.
Replication	To verify the reproducibility, we observed the establishment of 3D intestinal epithelial layers in each trial. Successful completion of the protocol results in more than 90% of reproducibility.
Randomization	Randomization is not required for this study.
Blinding	Blinding is not required for this study because any epithelial cell source can be used to establish a 3D epithelial structure.

Reporting for specific materials, systems and methods

We require information from authors about some types of materials, experimental systems and methods used in many studies. Here, indicate whether each material, system or method listed is relevant to your study. If you are not sure if a list item applies to your research, read the appropriate section before selecting a response.

Materials & experimental systems

n/a	Involved in the study
<input type="checkbox"/>	<input checked="" type="checkbox"/> Antibodies
<input type="checkbox"/>	<input checked="" type="checkbox"/> Eukaryotic cell lines
<input checked="" type="checkbox"/>	<input type="checkbox"/> Palaeontology and archaeology
<input checked="" type="checkbox"/>	<input type="checkbox"/> Animals and other organisms
<input checked="" type="checkbox"/>	<input type="checkbox"/> Human research participants
<input checked="" type="checkbox"/>	<input type="checkbox"/> Clinical data
<input checked="" type="checkbox"/>	<input type="checkbox"/> Dual use research of concern

Methods

n/a	Involved in the study
<input checked="" type="checkbox"/>	<input type="checkbox"/> ChIP-seq
<input checked="" type="checkbox"/>	<input type="checkbox"/> Flow cytometry
<input checked="" type="checkbox"/>	<input type="checkbox"/> MRI-based neuroimaging

Antibodies

Antibodies used	Rabbit anti-ZO-1 polyclonal antibody (Thermo Fisher Scientific, Cat. No. 61-7300, https://scicrunch.org/resolver/RRID:AB_2533938), Rabbit anti-LGR5 polyclonal antibody (Abcam, Cat. No. ab75732, https://scicrunch.org/resolver/RRID:AB_1310281), Mouse anti-MUC2 monoclonal antibody (Santa Cruz Biotechnology, Cat. No. sc-515032, https://scicrunch.org/resolver/RRID:AB_2815005), Goat anti-mouse IgG DyLight 488 (Abcam, Cat. No. ab96871, https://scicrunch.org/resolver/RRID:AB_10680543), Goat anti-rabbit IgG Alexa Fluor 555 (Abcam, Cat. No. ab150078, https://scicrunch.org/resolver/RRID:AB_2722519)
Validation	Used antibodies were validated by manufacturer and via immunofluorescence imaging in the laboratory.

Eukaryotic cell lines

Policy information about [cell lines](#)

Cell line source(s)	Caco-2 human colon cancer cells (Harvard Digestive Disease Center), Human intestinal organoids (established in the laboratory), Cultrex R-spondin1-producing 293T cells (Trevigen, Cat. No. 3710-001-K), Noggin-producing 293T cells (Digestive Diseases Center at Baylor College of Medicine)
Authentication	No authentication was performed.
Mycoplasma contamination	Mycoplasma contamination testing was routinely performed on all cell lines.
Commonly misidentified lines (See ICLAC register)	N/A