

# Paracellular permeability and tight junction regulation in gut health and disease

Arie Horowitz<sup>1</sup>, Sandra D. Chanez-Paredes<sup>2</sup>, Xenia Haest<sup>2</sup> & Jerrold R. Turner<sup>2</sup>✉

## Abstract

Epithelial tight junctions define the paracellular permeability of the intestinal barrier. Molecules can cross the tight junctions via two distinct size-selective and charge-selective paracellular pathways: the pore pathway and the leak pathway. These can be distinguished by their selectivities and differential regulation by immune cells. However, permeability increases measured in most studies are secondary to epithelial damage, which allows non-selective flux via the unrestricted pathway. Restoration of increased unrestricted pathway permeability requires mucosal healing. By contrast, tight junction barrier loss can be reversed by targeted interventions. Specific approaches are needed to restore pore pathway or leak pathway permeability increases. Recent studies have used preclinical disease models to demonstrate the potential of pore pathway or leak pathway barrier restoration in disease. In this Review, we focus on the two paracellular flux pathways that are dependent on the tight junction. We discuss the latest evidence that highlights tight junction components, structures and regulatory mechanisms, their impact on gut health and disease, and opportunities for therapeutic intervention.

## Sections

Introduction

Intestinal permeability in disease

Tight junctions and intestinal barrier function

The pore pathway in disease

The leak pathway in disease

Conclusions

<sup>1</sup>UNIROUEN, INSERM U1245, Normandy Centre for Genomic and Personalized Medicine, Normandie University, Rouen, France. <sup>2</sup>Laboratory of Mucosal Barrier Pathobiology, Department of Pathology, Brigham and Women's Hospital, Harvard Medical School, Boston, MA, USA. ✉e-mail: [jrtturner@bwh.harvard.edu](mailto:jrtturner@bwh.harvard.edu)

## Key points

- Increased intestinal permeability occurs in a wide range of disorders, including inflammatory bowel disease, coeliac disease and graft-versus-host disease, but the relative contributions of barrier dysfunction and immune responses are unclear.
- Intestinal barrier loss can be a consequence of tight junction dysfunction or of epithelial damage; in most studies, these mechanisms are not distinguished.
- Paracellular transport across the tight junction can occur via the pore pathway or the leak pathway, which have distinct size-selectivity and charge-selectivity and are differentially regulated by immune signalling.
- Claudin-2 increases Na<sup>+</sup> and water flux across the pore pathway but larger molecules are unable to traverse claudin-2 channels.
- The leak pathway allows macromolecules to cross the epithelial barrier and is regulated by the cytoskeleton and epithelial long myosin light chain kinase splice variant 1 (MLCK1).
- Blocking MLCK1 recruitment to the tight junction limits tight junction barrier loss without interfering with essential MLCK functions in epithelial cells and cells of other types.

## Introduction

Epithelia separate the organism from the external environment and define individual compartments within tissues. At some sites, the epithelia form a nearly complete barrier, disruption of which is catastrophic. For example, massive disruption of the epidermal (skin) barrier by burn injury or mutagenesis in animal models can be fatal. However, at other sites, such as renal tubules and intestines, the balance between permeability and barrier function is nuanced, as selective permeability is essential for physiological processes but must also be precisely regulated.

Flux across the epithelial barrier occurs via transepithelial transport, which involves transcellular and paracellular pathways. Transcellular transport involves movement of molecules through cells, and is mediated by apical and basolateral transmembrane transporters with exquisite substrate specificity. Paracellular transport is less selective and can involve movement of molecules across the epithelial barrier via the pore pathway or the leak pathway. A third permeability route, the unrestricted pathway, is created by epithelial damage (Box 1). Flux across the pore and leak pathways reflects permeability of tight junctions, which seal the space between adjacent epithelial cells and are the rate-limiting components of paracellular transport. Both pore and leak pathways are size-selective, and the pore pathway is charge-selective. However, both pathways lack the structural specificity of transcellular transport. For example, L-glucose can be absorbed paracellularly but is not recognized by transmembrane transport proteins and, therefore, cannot be absorbed via the transcellular route.

Although barrier loss is considered most often in the context of disease, insufficient selective permeability – that is, barrier enhancement – can also contribute to disease. For example, the first monogenic tight junction disease to be discovered – familial hypomagnesaemia

with hypercalciuria and nephrocalcinosis – is caused by mutation of claudin-16, which forms paracellular cation channels within the renal tubule. In the absence of claudin-16, paracellular Mg<sup>2+</sup> and Ca<sup>2+</sup> absorption in the thick ascending limb of the nephron fails<sup>1,2</sup>. Conversely, loss of claudin-14, which enhances paracellular barriers, in the organ of Corti causes deafness in mice and autosomal recessive nonsyndromic hearing loss 29 (DFNB29) in humans<sup>3–6</sup>.

In the intestines, the epithelial monolayer separates subepithelial immune cells from the luminal microbiome<sup>7</sup>. The balance between paracellular permeability and barrier function is, therefore, especially delicate because the epithelial monolayer must prevent unregulated paracellular flux of potentially pathogenic luminal materials<sup>8</sup> while also allowing the selective paracellular permeability that is required for nutrient and water absorption<sup>9</sup>. This situation contrasts with that in the nephron, where both the lumen of the renal tubule and the interstitial space are sterile under normal conditions. In the gut lumen, which contains a diverse microbiome, disruption of the balance between selective permeability and barrier function is associated with a wide range of intestinal and systemic disorders<sup>10,11</sup>.

In this Review, we consider several disorders that involve intestinal barrier dysfunction, focusing on changes to paracellular permeability and the function of tight junctions. We delineate molecular mechanisms that alter paracellular permeability and cause intestinal barrier loss. We also endeavour to differentiate between barrier loss as a contributor to disease pathogenesis and barrier loss as a consequence of disease processes.

## Intestinal permeability in disease

Intestinal permeability is increased – that is, barrier function is reduced – in many intestinal and systemic diseases (Table 1). Of these diseases, the most well studied intestinal disorders are inflammatory bowel disease (IBD) and coeliac disease. Although tight junction permeability is increased in IBD, the extensive barrier loss seen in advanced, active disease is more likely to reflect epithelial damage<sup>12–16</sup>. Similarly, increases in intestinal permeability in advanced graft-versus-host disease (GVHD) can reflect tight junction regulation or immune-mediated epithelial damage<sup>17</sup>. Although discrimination between these disparate mechanisms of barrier loss is possible, most studies have relied on the use of only a single probe, such as fluorescein isothiocyanate–4-kDa dextran in mouse models, to measure permeability. As a result, the data are insufficient to differentiate between leak pathway and unrestricted pathway flux. Thus, correlations observed between the extent of barrier loss and the severity of disease in IBD, coeliac disease and GVHD are most likely to be secondary to epithelial damage. By contrast, increased intestinal permeability in Crohn's disease during remission is more likely to reflect increased tight junction permeability<sup>18,19</sup>, particularly as increased permeability can occur up to 1 year before disease reactivation. Notably, psychological stress, which can increase intestinal permeability in rodents, is a risk factor for reactivation of Crohn's disease in patients<sup>20,21</sup>.

Reports that some healthy first-degree relatives of patients with Crohn's disease have modest intestinal barrier dysfunction led to the hypothesis that loss of intestinal barrier function is a primary event in Crohn's disease pathogenesis. The idea that loss of barrier function is an early pathogenic event is supported by evidence that increased intestinal permeability in healthy first-degree relatives of patients with Crohn's disease is associated with the risk-associated *NOD2* 3020insC polymorphism<sup>22</sup>. Perhaps the most convincing evidence comes from another study of healthy relatives of patients with Crohn's disease,

Box 1

# The pore, leak and unrestricted permeability pathways

Intestinal permeability can reflect contributions of three distinct pathways: the pore pathway, the leak pathway and the unrestricted pathway (see the figure). The pore and leak pathways reflect flux across tight junctions, whereas the unrestricted pathway is independent of tight junctions.

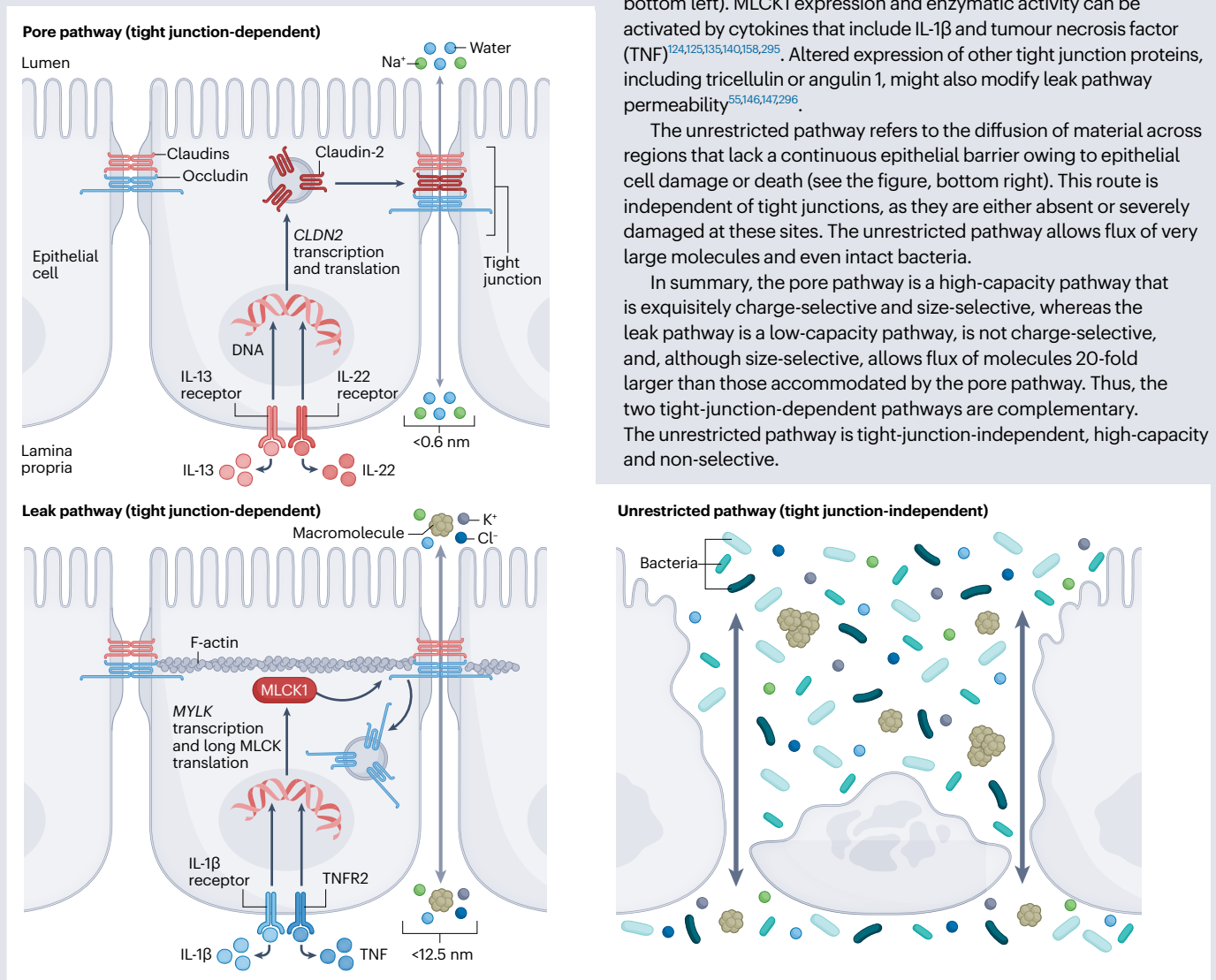
Pore pathway permeability is defined by claudin proteins, which form either channels or barriers at the tight junction<sup>291-294</sup>. Channels generated by pore-forming claudins are charge-selective and size-selective; the maximum diameter of solutes that can pass through them is 0.6 nm. Claudins form only cation-selective channels in the gastrointestinal tract, but anion-selective claudin

channels are present at other sites, such as the nephron. Immune signals, including IL-13 and IL-22, lead to increased transcription and expression of intestinal epithelial claudin-2, which increases pore pathway permeability (see the figure, top)<sup>45,50,86</sup>.

The tight junction leak pathway allows molecules with diameters up to ~12.5 nm to traverse the epithelial barrier. The molecular structure of the leak pathway is poorly understood, but its permeability can be regulated by long myosin light chain splice variant 1 (MLCK1)<sup>125,140,141,157</sup>. MLCK1 phosphorylates myosin regulatory light chain to trigger endocytosis of the tight junction protein occludin, leading to an increase in tight junction permeability (see the figure, bottom left). MLCK1 expression and enzymatic activity can be activated by cytokines that include IL-1 $\beta$  and tumour necrosis factor (TNF)<sup>124,125,135,140,158,295</sup>. Altered expression of other tight junction proteins, including tricellulin or angulin 1, might also modify leak pathway permeability<sup>55,146,147,296</sup>.

The unrestricted pathway refers to the diffusion of material across regions that lack a continuous epithelial barrier owing to epithelial cell damage or death (see the figure, bottom right). This route is independent of tight junctions, as they are either absent or severely damaged at these sites. The unrestricted pathway allows flux of very large molecules and even intact bacteria.

In summary, the pore pathway is a high-capacity pathway that is exquisitely charge-selective and size-selective, whereas the leak pathway is a low-capacity pathway, is not charge-selective, and, although size-selective, allows flux of molecules 20-fold larger than those accommodated by the pore pathway. Thus, the two tight-junction-dependent pathways are complementary. The unrestricted pathway is tight-junction-independent, high-capacity and non-selective.



Adapted from ref. 297, Springer Nature Limited.

**Table 1 | Diseases associated with intestinal barrier defects**

Disease	Findings in patients	Findings in animal models
IBD (Crohn's disease and ulcerative colitis)	Increased permeability is a risk factor for IBD in healthy relatives of patients with Crohn's disease and for relapse in patients with Crohn's disease <sup>18,19,22,24,174,182,183</sup>	<i>Il10</i> -knockout mice develop a permeability defect before disease onset; experimental IBD is more severe in genetically modified mice with increased intestinal permeability; genetic or pharmacological reduction of pore pathway or leak pathway function limits the severity of experimental IBD <sup>59,98,117,134,141,163,184,185</sup>
Graft-versus-host disease	Positive correlation of pre-conditioning gastrointestinal toxicity (presumed to indicate degree of transient barrier loss) with disease activity <sup>17,186</sup>	Gut damage is an essential driver of experimental disease; intestinal permeability is increased and tight junction protein organization is altered in experimental disease; disease progression and severity are attenuated in long MLCK-knockout mice <sup>137,187-191</sup>
Type 1 diabetes mellitus	Permeability is increased in patients with pre-diabetes and diabetes mellitus <sup>192-194</sup>	Permeability increases precede disease; barrier restoration can delay disease onset <sup>195,196</sup>
Metabolic syndrome (including type 2 diabetes mellitus, obesity and nonalcoholic fatty liver disease)	Increased intestinal permeability is a risk factor for type 2 diabetes mellitus and is associated with obesity and nonalcoholic fatty liver disease <sup>194,197-201</sup>	Hyperglycaemia, high-fat diet, nonalcoholic fatty liver disease and obesity are associated with increased intestinal permeability <sup>202-208</sup>
HIV/AIDS	Increased permeability in HIV enteropathy; positive correlation with disease stage; increased in patients with untreated HIV infection <sup>90,209,210</sup>	Increased intestinal permeability in simian immunodeficiency virus infection is associated with microbial translocation and systemic immune activation <sup>211,212</sup>
Multiple organ dysfunction syndrome	Correlates with increased disease severity <sup>213</sup>	Associated with shock; disease progression is limited in knockout mice that are protected from leak pathway permeability increases <sup>214-217</sup>
IBS	Increased in diarrhoea-predominant, post-infectious and non-post-infectious IBS; unaltered in constipation-predominant IBS <sup>28,218-229</sup>	Increased intestinal permeability is associated with and can cause changes in visceral sensitivity <sup>31,230,231</sup>
Coeliac disease	Positive correlation between increased permeability and disease activity; increased permeability in patients and healthy relatives; gluten-free diet can lead to barrier restoration <sup>232-235</sup>	Barrier loss is associated with disease in models of coeliac disease <sup>236-238</sup>
Environmental enteric dysfunction	Increased permeability; altered expression of absorptive and barrier-enhancing proteins <sup>239-247</sup>	Barrier loss is associated with malnutrition <sup>240,248,249</sup>
Food allergy	Increased in people with food allergy <sup>250-252</sup>	Permeability increased in mice after food antigen challenge <sup>253-257</sup>
Sepsis	Increased permeability in sepsis; increased plasma zonulin <sup>258-261</sup>	Permeability increased in experimental sepsis; relationship to disease progression is not defined <sup>262-266</sup>
SARS-CoV-2 infection	Permeability is increased in severe systemic disease; some data suggest that barrier restoration using a zonulin antagonist is beneficial <sup>267-276</sup>	No direct measures of intestinal permeability
Parkinson disease	Permeability increased in a subset of patients <sup>277,278</sup>	No direct measures of intestinal permeability
Asthma	Permeability increased in people with asthma; IBD associated with increased risk of asthma <sup>279,280</sup>	Correlation between disease and intestinal permeability in some models <sup>281,282</sup>
Multiple sclerosis and amyotrophic lateral sclerosis	Increased intestinal permeability in a subset of patients <sup>283-285</sup>	Increased intestinal permeability in experimental allergic encephalitis model <sup>286</sup>
Rheumatic diseases (arthritis and ankylosing spondylitis)	Increased intestinal permeability in some patients <sup>287,288</sup>	Increased permeability in mouse models; barrier restoration can limit disease <sup>287,289,290</sup>

IBD, inflammatory bowel disease; IBS, irritable bowel syndrome; MLCK, myosin light chain kinase.

in which the risk of developing disease was twofold to threefold higher among those with increased intestinal permeability than among those with normal permeability<sup>23</sup>.

In healthy relatives of patients with Crohn's disease, increased intestinal permeability was also associated with reduced microbial diversity and alterations in specific genera and microbial metabolic pathways<sup>24</sup>. By contrast, faecal calprotectin – a marker of mucosal inflammation but not of barrier loss – was increased in some healthy relatives but was not an independent risk factor for development of Crohn's disease<sup>25</sup>. Reports of increased intestinal permeability up to 3 years before onset of Crohn's disease suggest that barrier loss is

the initial trigger that activates intermediate events, such as mucosal immune activation, that culminate in disease. Together, these observations suggest that barrier loss is a primary event in Crohn's disease pathogenesis.

Some data suggest that increased intestinal permeability is associated with poorly understood conditions, including irritable bowel syndrome and autism spectrum disorders<sup>26-30</sup>. The mechanistic underpinnings of these associations have not been defined and, in both patients and animal models, the question of whether barrier loss is a cause or consequence of disease remains. The observation that mice with genetically induced increases in intestinal permeability develop



anxiety-like behaviours, hyporesponsiveness to rectal distension and activation of neurons within the thalamus, hypothalamus and hippocampus<sup>31</sup> demonstrates that increased intestinal permeability can effect changes in behaviour, visceral sensation and neurological activity. These mice also have an altered microbiome composition.

## Tight junctions and intestinal barrier function

In the absence of epithelial damage, the tight junction is the rate-limiting determinant of passive paracellular transport. At the tight junction, the intercellular spaces between adjoining cells are eliminated and the outer leaflets of the plasma membrane lipid bilayer of adjacent epithelial cells are closely apposed and appear to fuse<sup>32</sup> (Fig. 1). Subapical to the tight junction are the adherens junctions and desmosomes, which are linked to actin-based microfilaments and cytokeratin-based intermediate filaments, respectively. These cytoskeletal structures provide the tensile strength that supports tight junctions and maintains cell shape.

## Tight junction pathways and proteins

The first tight junction protein to be discovered was zonula occludens 1 (ZO-1)<sup>33</sup> (Fig. 1), followed by the two related proteins ZO-2 and ZO-3, and the unrelated protein cingulin<sup>34–37</sup>, though all of these proteins are intracellular peripheral membrane proteins. These discoveries were followed by the discovery of the tetraspan transmembrane tight junction proteins occludin<sup>38</sup> and the claudins, which are encoded by 27 genes in mammals<sup>39,40</sup>.

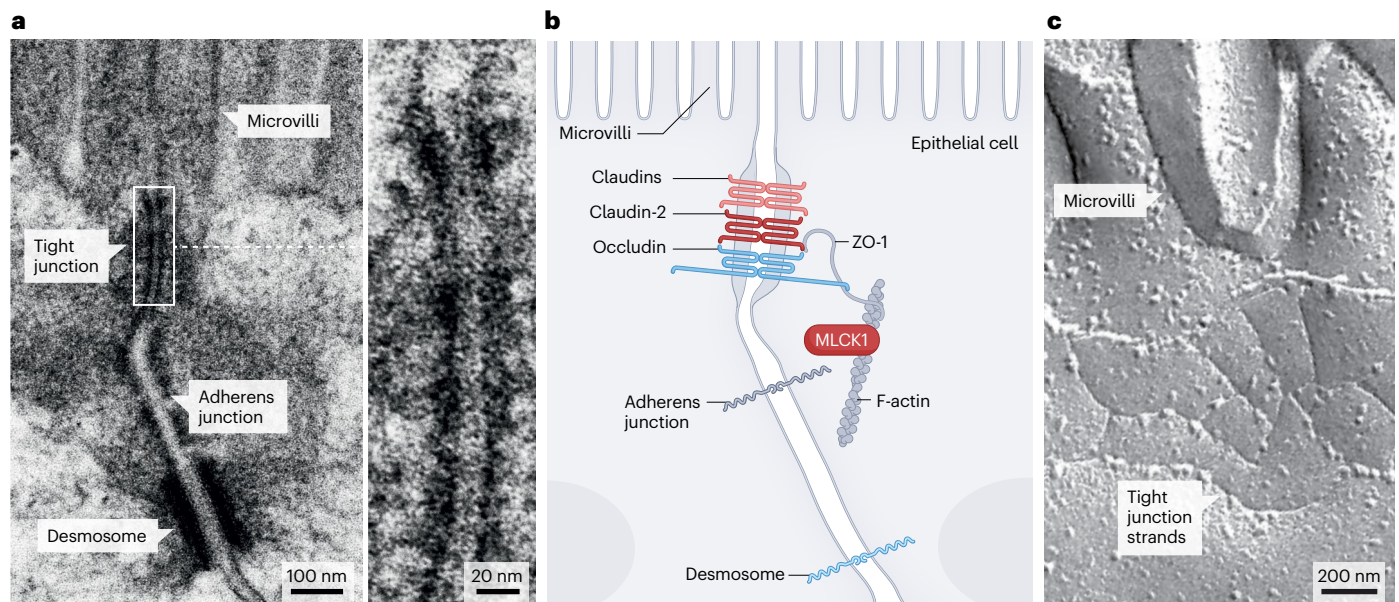
When expressed in non-epithelial cells, claudins can self-assemble into large polymers to form structures that are reminiscent of tight junction strands seen by freeze–fracture electron microscopy<sup>41</sup> (Fig. 1). Many claudins are critical for barrier function, but others form charge-selective and size-selective paracellular channels. The ensemble of

expressed claudins dictates the size-selectivity and charge-selectivity of specific sites within tissues. Detailed characterization has demonstrated that the charge-selectivity of claudin channels is determined by specific residues within the first extracellular loop<sup>42,43</sup>. Regardless of whether they are cation-selective or anion-selective, all claudin channels studied to date are size-selective and allow paracellular flux of only molecules with a diameter of <0.6 nm (refs. 43–46). These channels define the pore pathway<sup>47</sup> (Box 1) and are exemplified by claudin-2, which mediates paracellular flux of small cations, such as Na<sup>+</sup>, and water<sup>42,43,48,49</sup>. Claudin-2 cannot, however, accommodate the commonly used macromolecular probes lactulose, mannitol or 4 kDa dextran<sup>48,50,51</sup>, emphasizing the need to consider the physical characteristics of the solute being measured when assigning mechanisms of changes in paracellular permeability.

Although rejected by the pore pathway, molecules larger than 0.6 nm, including lactulose, mannitol and 4 kDa dextran, can cross tight junctions via a second paracellular flux route known as the leak pathway (Box 1), which can accommodate molecules with diameters of up to ~12.5 nm and is not charge-selective<sup>47,52</sup>. The specific molecular structure of the leak pathway has not been identified, but its permeability is regulated by occludin<sup>53,54</sup>, tricellulin (also known as MARVEL domain-containing protein 2, a member of the tight junction-associated MARVEL protein (TAMP) family)<sup>55</sup>, ZO-1 (refs. 52,56) and perijunctional actomyosin<sup>53,57–59</sup>.

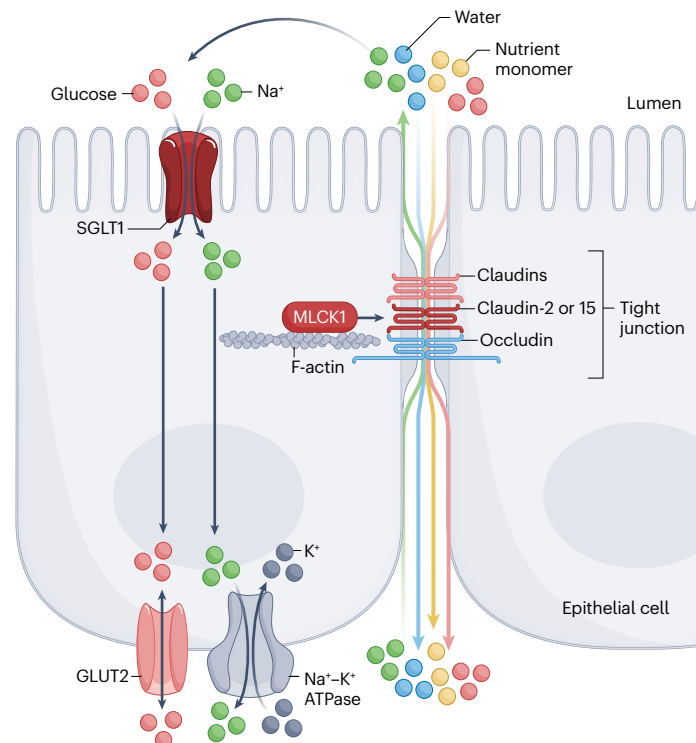
## Pore and leak pathway functions in health

The major pore-forming claudins expressed within the intestinal epithelium are claudin-2 and claudin-15 (refs. 9,60), both of which form cation-selective channels<sup>49,61,62</sup>. Mice that lack either claudin-2 or claudin-15 are viable, but mice that lack both claudins die before weaning<sup>9</sup>, consistent with the idea that these proteins are, at least partially,



**Fig. 1 | Tight junction structure and morphology.** **a**, Transmission electron micrograph showing the tight junction, adherens junction and desmosome, which, together, comprise the apical junctional complex. The tight junction is located just below the base of the microvilli. The magnification shows the transition from the luminal space, between the microvilli, into the tight junction, where morphologically detectable paracellular space is obliterated. **b**, Schematic

of the apical junctional complex shown in part **a**, showing the location of the tight junction proteins zonula occludens 1 (ZO-1), occludin, claudin-2 and other claudin family members. Long myosin light chain kinase 1 (MLCK1) is associated with perijunctional F-actin and is a key regulator of tight junction permeability. **c**, Freeze–fracture electron micrograph showing tight junction strands at the base of apical microvilli.



**Fig. 2 | Coordination of transcellular and paracellular transport.** The gradient of  $\text{Na}^+$  between the gut lumen and the cytoplasm of epithelial cells provides the driving force for nutrient absorption across the apical brush border membrane, such as glucose absorption via the intestinal epithelial  $\text{Na}^+$ -glucose cotransporter SGLT1. Nutrients then exit the cell via facilitated exchange proteins, such as the glucose transporter GLUT2, and  $\text{Na}^+$  exits via the  $\text{Na}^+$ - $\text{K}^+$  ATPase.  $\text{Na}^+$ -glucose cotransport also triggers signal transduction pathways that activate long myosin light chain kinase 1 (MLCK1) and increase tight junction permeability. The osmotic gradient generated by transcellular nutrient and  $\text{Na}^+$  transport draws water across the tight junction and, owing to the high concentration of nutrient monomers in the unstirred layer, nutrients are carried along with this fluid in a mechanism known as solvent drag<sup>71</sup>. This process would quickly exhaust luminal  $\text{Na}^+$  if not for claudin-2 and claudin-15, which form paracellular  $\text{Na}^+$  channels that enable efflux of absorbed  $\text{Na}^+$  in order to provide the driving force for continued transcellular nutrient absorption<sup>9,63</sup>.

functionally redundant. Nevertheless, intestinal hypertrophy occurs in claudin-15-knockout, but not claudin-2-knockout, mice<sup>63,64</sup>.

Paracellular  $\text{Na}^+$  efflux via claudin-2 and claudin-15 channels is critical to transcellular nutrient transport. Brush border absorption is largely driven by  $\text{Na}^+$ -nutrient cotransporters that rely on the  $\text{Na}^+$  gradient between the intestinal lumen and the cytoplasm of epithelial cells (Fig. 2). During this process,  $\text{Na}^+$  enters the cytoplasm and is exported across the basolateral membrane into the lamina propria by the  $\text{Na}^+$ - $\text{K}^+$  ATPase<sup>65</sup>. In the absence of paracellular  $\text{Na}^+$  transport, transcellular transport rapidly depletes luminal  $\text{Na}^+$  and nutrient cotransport across the apical brush border membrane stops. Flux across claudin-2 and claudin-15 channels allows  $\text{Na}^+$  efflux from the lamina propria to the lumen, where it can drive additional cycles of  $\text{Na}^+$ -nutrient cotransport.

The requirement for  $\text{Na}^+$  efflux in the intestine explains the critical roles of claudin-2 and claudin-15 in nutrient absorption but

does not explain why expression of these claudins is so precisely regulated. At birth, intestinal epithelial claudin-2 expression is high throughout the crypt-villus axis of the intestinal epithelium<sup>60,63,66</sup>, but claudin-2 expression is markedly diminished and limited to crypt epithelium after weaning. Concurrently, claudin-15 expression increases throughout the crypt-villus axis. Although only subtle functional differences between these claudins have been detected in vitro<sup>48,62</sup>, this precise developmental regulation suggests that the in vivo properties of claudin-2 and claudin-15 channels must differ substantially. Hypothetically, claudin-2 might allow greater paracellular  $\text{Na}^+$  flux than claudin-15, which would be advantageous for the rapid growth that occurs during early postnatal development and depends on  $\text{Na}^+$ -nutrient cotransport. Alternatively, channel open state probabilities or other subtle functional characteristics of claudin-2 and claudin-15 might differ. This question could be resolved by single-channel analysis but, unfortunately, such data have only been reported for claudin-2 (ref. 46).

$\text{Na}^+$ -nutrient cotransport triggers downstream signalling in the epithelial cell. These signalling events activate MLCK, which phosphorylates perijunctional myosin regulatory light chain (MLC) and increases leak pathway permeability<sup>67-69</sup>. This process amplifies paracellular nutrient transport via solvent drag (Fig. 2), whereby the osmotic gradient created by transcellular transport drives paracellular water absorption<sup>70</sup>. The absorbed water comes from the unstirred layer immediately adjacent to the epithelium, which is rich in small nutrient monomers owing to the activity of brush border digestive enzymes. This paracellular fluid absorption allows paracellular nutrient absorption to amplify transcellular transport<sup>71-74</sup>. Importantly, solvent drag only contributes substantially to nutrient absorption when luminal concentrations of nutrient monomers are high<sup>72</sup>. This subtlety probably explains why passive paracellular nutrient absorption via solvent drag has been detected in some studies and not others<sup>75-84</sup>. In contrast to transcellular transport, paracellular absorption via solvent drag is not stereospecific and can accommodate molecules for which there are no apical transporters, such as mannitol<sup>72,85</sup>.

Paracellular amplification of transcellular absorption, or solvent drag, probably explains why the rate of nutrient transport across the intestinal epithelium cannot be saturated<sup>72</sup>. Clinically, solvent drag contributes to the efficacy of simple  $\text{Na}^+$  and carbohydrate-containing oral rehydration solutions that have been used to treat countless individuals with potentially fatal, high-volume diarrhoeal diseases, such as cholera. By contrast, the glycosuria that occurs in diabetes mellitus suggests that no corresponding paracellular pathway for glucose resorption exists within the renal tubule.

### The pore pathway in disease

Intestinal epithelial claudin-2 has been the subject of intense scrutiny owing to its markedly increased expression in a broad range of inflammatory disorders. Claudin-2 upregulation was first described in the contexts of ulcerative colitis and Crohn's disease<sup>86,87</sup>. Subsequent work demonstrated that intestinal epithelial claudin-2 is also upregulated in coeliac disease<sup>88</sup>, irritable bowel syndrome<sup>89</sup>, HIV enteropathy<sup>90</sup>, enteric infection<sup>50</sup>, necrotizing enterocolitis<sup>91</sup> and Whipple disease<sup>92</sup>. The factors that mediate claudin-2 upregulation are incompletely characterized, but in vitro and in vivo studies have implicated IL-1, IL-6, IL-13, IL-22 and tumour necrosis factor (TNF) as potential enhancers of claudin-2 expression<sup>50,86,93-96</sup>. By contrast, some in vitro studies suggest that butyrate can suppress claudin-2 expression and increase barrier function via an IL-10 receptor-dependent mechanism<sup>97</sup>. Together, these data

indicate that the mucosal immune system can fine-tune claudin-2 expression.

Administration of recombinant IL-13 to mice increases claudin-2 expression and augments intestinal paracellular cation permeability<sup>98</sup>. Similarly, transgenic claudin-2 overexpression within the intestinal epithelium increases paracellular permeability to cations to levels similar to those in IL-13-treated wild-type mice<sup>98</sup>. By contrast, IL-13 has no effect on intestinal permeability in mice in which the *Cldn2* gene, which encodes claudin-2, is knocked out. Thus, claudin-2 upregulation is both necessary and sufficient to increase paracellular cation permeability in vivo. The impact of this effect on disease is discussed in the following sections.

### Claudin-2 attenuates diseases induced by luminal insults

A pair of studies of *Cldn2*-transgenic and *Cldn2*-knockout mice provided initial evidence that increased claudin-2 expression is beneficial in dextran sulfate sodium (DSS)-induced colitis<sup>98,99</sup>. However, claudin-2 overexpression also increases faecal water content<sup>50</sup>, suggesting that increased claudin-2 expression might reduce the severity of colitis simply by diluting DSS within the distal colon. An alternative possibility is that claudin-2 expression promotes epithelial growth and mucosal repair<sup>100–102</sup>, as discussed below (see ‘Claudin-2 and epithelial proliferation’).

Claudin-2 expression is increased during enteric infection in humans<sup>103</sup>. Similarly, the model pathogen *Citrobacter rodentium* triggers IL-22-dependent claudin-2 upregulation within 2 days of infection in mice<sup>50</sup> (Fig. 3). Although IL-22 is pleiotropic, an increased number of mucosa-associated *C. rodentium*, delayed pathogen clearance and a greater severity of mucosal damage in *Cldn2*-knockout mice relative to wild-type mice demonstrate that IL-22-dependent claudin-2 upregulation contributes to host defence<sup>50</sup>. The observation that transgenic

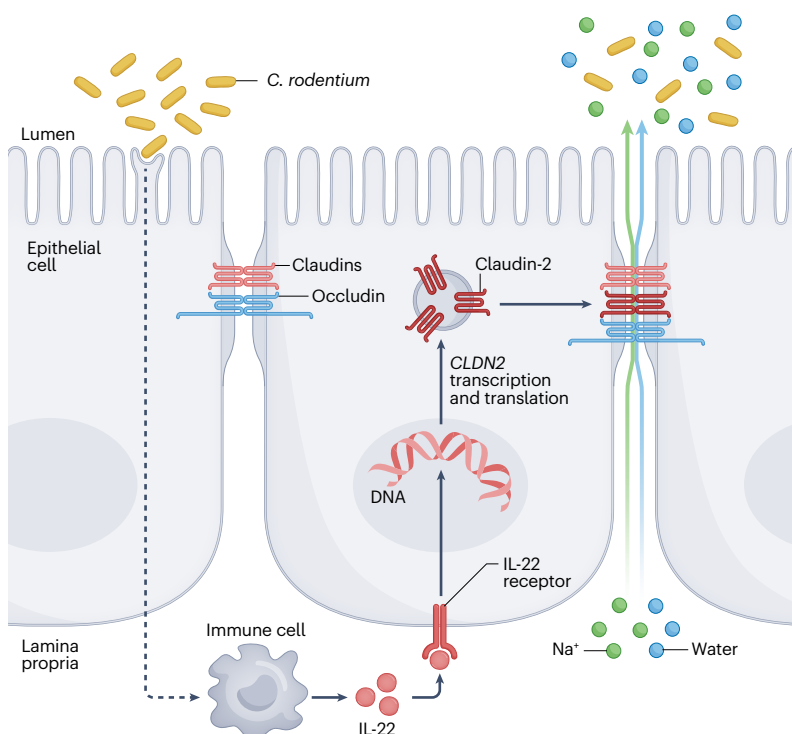
claudin-2 overexpression limits *C. rodentium*-induced colitis provides further support for this conclusion.

The passage of either Na<sup>+</sup> or water through claudin-2 channels<sup>104,105</sup> could mediate the increased pathogen clearance and reduced disease severity associated with claudin-2 expression. In studies to dissect these mechanisms, wild-type, *Cldn2*-transgenic and *Cldn2*-knockout mice were infected with *C. rodentium*. Polyethylene glycol (PEG) was added to their drinking water 4 days later to create an osmotic gradient that increased fluid flow into the intestinal lumen. PEG treatment normalized the number of mucosa-associated *C. rodentium*, pathogen clearance and mucosal damage across genotypes, demonstrating that paracellular water efflux is the primary means by which claudin-2 promotes enteric pathogen clearance.

The effect of PEG was unlikely to have been a result of fluid efflux simply washing bacteria off the epithelial surface, as *C. rodentium* is an attaching and effacing pathogen that forms pedestals and is not easily displaced from intestinal epithelial cells. Moreover, intestinal epithelial cells turn over every few days during infection, so the cells present at the peak of disease (11 days after infection) are not the same cells that were initially colonized. Therefore, one possible explanation for the findings is that claudin-2-mediated paracellular water efflux reduces the efficiency with which new cells are infected. This hypothesis remains to be tested. Nevertheless, evidence indicates that the diarrhoea induced by claudin-2 upregulation is beneficial in the context of enteric infection. These results provide the first experimental data to show that diarrhoea promotes enteric pathogen clearance, an idea that has persisted for centuries despite a lack of supporting evidence<sup>106</sup>.

### Claudin-2 exacerbates immune-mediated colitis

Claudin-2 transcription is exquisitely responsive to cytokine stimulation and is increased in a wide range of human and experimental



**Fig. 3 | Promotion of pathogen clearance by paracellular fluid efflux.** *Citrobacter rodentium* infection triggers an immune response that leads to IL-22 release within the lamina propria within 2 days of infection. IL-22 signalling activates claudin-2 transcription and increases claudin-2 channel-mediated Na<sup>+</sup> and water efflux via the tight junction pore pathway, resulting in diarrhoea that promotes clearance of the infection. Adapted with permission from ref. 50, Elsevier.



disorders associated with mucosal inflammation. Given its protective role during enteric infection and DSS-induced injury, claudin-2 upregulation might also be expected to be beneficial in inflammatory disease. This hypothesis was tested by inducing immune-mediated colitis by T cell transfer in immunodeficient, claudin-2 wild-type, transgenic and knockout mice<sup>98</sup>. In contrast to the effects of claudin-2 in infectious colitis, its overexpression exacerbated immune-mediated colitis and was associated with severe weight loss, increased cytokine production, mucosal T cell infiltration and histopathological damage. Conversely, *Cldn2* knockout attenuated all measures of colitis severity. Together with the effects of claudin-2 expression on pathogen clearance, these data suggest that claudin-2 upregulation triggers defence mechanisms that include immune activation and, therefore, exacerbates immune-mediated disease. Although the mechanisms by which claudin-2-mediated paracellular Na<sup>+</sup> and water flux enhances immune activation is unknown, this phenomenon could explain the observed exacerbation of immune-mediated disease by high-Na<sup>+</sup> diets<sup>107–114</sup>.

The findings in *Cldn2*-knockout mice also provide further support for the idea that substantial functional differences exist between claudin-2 and claudin-15 *in vivo*. Although claudin-15 expression is not altered in human IBD or experimental immune-mediated colitis, it was upregulated in colitic *Cldn2*-knockout mice<sup>98</sup>. However, *Cldn2*-knockout mice remained protected from immune-mediated colitis, indicating that claudin-15 cannot compensate for claudin-2 loss in this context.

Although disease severity was lower in *Cldn2*-knockout mice than in wild-type mice, survival was inferior<sup>98</sup>. The cause of death among *Cldn2*-knockout mice was intestinal obstruction. This observation could reflect an inability to increase luminal hydration, owing to lack of claudin-2-mediated water transport, that synergized with colitis-associated epithelial proliferation, mucosal expansion and luminal narrowing to allow formation of luminal faecaliths and intestinal obstruction. Consistent with this interpretation, induction of mild osmotic diarrhoea increased faecal water content, prevented intestinal obstruction and increased survival of the *Cldn2*-knockout mice<sup>50</sup>. Osmotic diarrhoea did not, however, affect overall disease severity in claudin-2 wild-type, transgenic or knockout mice<sup>98</sup>. Therefore, the increased survival due to osmotic diarrhoea does not reflect direct mitigation of immune activation or tissue damage.

The protection afforded by *Cldn2* knockout suggests that pharmacological inhibition of claudin-2 function might be effective in immune-mediated disease. Of several reported approaches to claudin-2 channel inhibition<sup>115–118</sup>, only one has been assessed *in vivo*<sup>98</sup>. This approach relies on casein kinase 2 (CK2) inhibition, occludin dephosphorylation and assembly of a claudin-2–ZO-1–occludin complex that inactivates claudin-2 channels<sup>98,117</sup>. CK2 inhibition did not interfere with IL-13-induced increases in claudin-2 expression but did prevent IL-13-induced changes in paracellular Na<sup>+</sup> permeability. CK2 inhibition markedly attenuated the severity of immune-mediated colitis in claudin-2 wild-type mice<sup>98</sup>. Although CK2 is a ubiquitously expressed, promiscuous kinase, CK2 inhibition did not affect disease severity in *Cldn2*-knockout mice, indicating that its therapeutic benefit is largely due to claudin-2 channel inactivation. Notably, CK2 inhibition did not cause intestinal obstruction in *Cldn2* wild-type mice, probably owing to incomplete claudin-2 channel inactivation. Together with the fact that the intestinal lumen diameter is much greater in humans than in mice, this observation suggests that pharmacological claudin-2 channel inhibition is unlikely to cause intestinal obstruction in humans.

## Claudin-2 and epithelial proliferation

Some evidence suggests that claudin-2 promotes epithelial proliferation<sup>100,101,119,120</sup>. For example, the rate of intestinal epithelial proliferation was nearly doubled in one strain of mice with transgenic claudin-2 overexpression<sup>100</sup>. As mentioned above, this proliferation might contribute to the protection that claudin-2-transgenic mice have from DSS-induced colitis<sup>100</sup>. However, epithelial proliferation was not increased in a different *Cldn2*-transgenic mouse model<sup>50</sup>. The reasons for this discrepancy are unclear, as *Cldn2* expression was under the control of the 9 kB villin promoter<sup>121</sup> and pore pathway permeability was increased in both models. However, the transgenic mice differed in that one expressed human claudin-2 at high levels<sup>100</sup>, whereas the other expressed EGFP-tagged mouse claudin-2 at lower levels<sup>50</sup>. Although further study is needed, this difference could underlie the discrepancy between the two models and could also explain increases in leak pathway permeability that occurred in the first, but not the second, model.

Other data that suggest a role for claudin-2 in regulating epithelial proliferation include studies of SW480 and HCT116 human colon cancer cells, which demonstrated that claudin-2 overexpression increases proliferation *in vitro*, accelerates tumour growth *in vivo* and reduces apoptosis triggered by the chemotherapeutic agent 5-fluorouracil<sup>122</sup>. In a study in patients with colon cancer, high claudin-2 expression correlated with lower overall and disease-free survival, further supporting the notion that claudin-2 can promote epithelial proliferation<sup>123</sup>. Thus, although the mechanisms are not defined, claudin-2 overexpression might promote intestinal epithelial cell proliferation in some contexts.

## The leak pathway in disease

Although the leak pathway is activated physiologically during Na<sup>+</sup>–nutrient cotransport, far greater increases in leak pathway permeability are induced by TNF<sup>124–126</sup> (Box 1). The reasons for this difference between physiological and pathophysiological tight junction regulation are unclear because both depend on MLCK activation, but they might relate to the fact that occludin endocytosis occurs during TNF-induced barrier loss but occludin distribution is unaffected during Na<sup>+</sup>–nutrient cotransport-induced permeability increases<sup>53,68,125,127</sup>. Occludin is also internalized during MLCK-mediated barrier loss induced by the TNF-related cytokine LIGHT, IL-1 $\beta$  or lipopolysaccharide<sup>128–133</sup>.

In experimental, immune-mediated IBD, activation of intestinal epithelial MLCK accelerates disease progression, whereas genetic deletion of intestinal epithelial MLCK attenuates disease<sup>59,134</sup>. Interestingly, the claudin-2 upregulation that normally occurs in experimental, immune-mediated IBD is reduced in mice that lack intestinal epithelial MLCK<sup>134</sup> and is restored by transgenic expression of constitutively active MLCK within intestinal epithelia<sup>134</sup>. Thus, the leak pathway and pore pathway are linked in disease. Notably, transgenic expression of constitutively active MLCK within intestinal epithelial cells, which modestly increases leak pathway permeability but does not induce disease, increases both mucosal IL-13 production and epithelial claudin-2 expression. Thus, increased leak pathway permeability can, via mucosal immune activation, trigger claudin-2 upregulation<sup>45</sup>. Conversely, as noted above, leak pathway permeability is increased in one of two claudin-2 overexpressing transgenic mice despite the absence of overt disease. Although the precise relationship between pore pathway and leak pathway regulation in the context of disease remains to be determined, the ability of distinct cytokines to specifically and independently regulate pore pathway or leak pathway permeability is striking.



TNF, LIGHT and IL-1 $\beta$  all trigger transcriptional and enzymatic activation of MLCK<sup>135–137</sup>, although reports differ as to whether the transcriptional activation is mediated by nuclear factor- $\kappa$ B, p38 mitogen-activated protein kinase (MAPK) or the transcription factor activator protein 1 (AP-1)<sup>135,138–140</sup>. Regardless of these discrepancies, MLCK activation clearly leads to perijunctional MLC phosphorylation and occludin endocytosis<sup>125,140,141</sup>. Despite ongoing debate regarding the functional significance of occludin, the consensus is that occludin, along with other proteins, is a critical regulator of leak pathway permeability. This role of occludin has been demonstrated in several *in vitro* studies<sup>52,142–144</sup>, but the strongest evidence comes from *in vivo* studies that have shown that blockade of occludin endocytosis or transgenic occludin overexpression limits TNF-induced leak pathway barrier loss<sup>54</sup>. This observation suggests that reduced occludin expression could explain the increased permeability of the leak pathway observed in human disease, including IBD<sup>86,145</sup>.

The tricellular tight junction proteins tricellulin and angulin 1 might also be important regulators of leak pathway permeability. *In vitro* studies have shown that deletion of either tricellulin or angulin-1 increases leak pathway permeability<sup>146–148</sup>. Similar to tricellulin, siRNA-mediated knockdown of the other TAMPs, MARVELD3 (refs. 146,149) or occludin<sup>142,143</sup>, also increased leak pathway permeability. Tricellulin redistribution from tricellular to bicellular tight junctions<sup>150</sup> following occludin loss<sup>54,125</sup> could, therefore, be an intermediate event that allows occludin to regulate leak pathway permeability. Thus, although a great deal has been learned about proteins that contribute to leak pathway barrier function and mechanisms of experimental and pathophysiological leak pathway regulation, the molecular structure of the leak pathway remains enigmatic.

## Diverse occludin functions

Unexpectedly, intestinal epithelial specific occludin knockout protects mice from experimental colitis and epithelial injury driven by intrinsic and extrinsic TNF signalling pathways. This finding was ultimately explained by the observation that occludin enhances activity of the promoter for *CASP3*, which encodes caspase 3, through an undefined mechanism<sup>145</sup>. In cultured cell lines and mice, occludin downregulation led to a reduction of ~50% in caspase 3 expression that conferred protection from a diverse range of pro-apoptotic stimuli<sup>145,151</sup>. Analyses of biopsy samples suggests that this process also occurs in human disease, as occludin downregulation correlates with reduced epithelial caspase 3 expression in patients with ulcerative colitis or Crohn's disease.

Thus, in addition to increasing leak pathway permeability, occludin downregulation can promote epithelial survival. However, this effect might not be entirely beneficial, as it could allow evolution of deleterious mutations that would have otherwise been eliminated by apoptosis. Consistent with this hypothesis, *in vitro* studies suggest that occludin functions as a tumour suppressor in some contexts<sup>151–155</sup>. Further exploration will, therefore, be required to fully understand extra-junctional functions of occludin.

## Distinct functions of long MLCK splice variants

Epithelial MLCK is expressed from the same gene (*MYLK*) that encodes smooth muscle MLCK<sup>156</sup>. However, epithelial (long) MLCK is ~225 kDa (refs. 156,157), whereas smooth muscle (short) MLCK is only ~130 kDa (Fig. 4). Long MLCK transcription, which is activated by TNF, IL-1 $\beta$  and other stimuli<sup>135,158</sup>, generates mRNA transcripts that include additional 5' exons that are not present in short MLCK transcripts<sup>156</sup>. This difference reflects the location of the short MLCK promoter

within an intron of long MLCK. Nevertheless, the carboxy-terminal catalytic and calmodulin-binding regulatory domains are identical in long and short MLCK. The 5' region that distinguishes long MLCK from short MLCK undergoes extensive alternative splicing<sup>156</sup>. Of the splice variants generated, only two – long MLCK1 and MLCK2 – are expressed in intestinal epithelial cells<sup>157</sup> (Fig. 4). Although the underlying mechanisms have not been defined, splicing seems to be precisely regulated during differentiation, as MLCK2 is expressed throughout the crypt–villus axis but MLCK1 expression is limited to the upper villus<sup>157</sup>. Moreover, the increased MLC phosphorylation in active Crohn's disease is specifically associated with perijunctional MLCK1 recruitment<sup>159,160</sup> (Fig. 4).

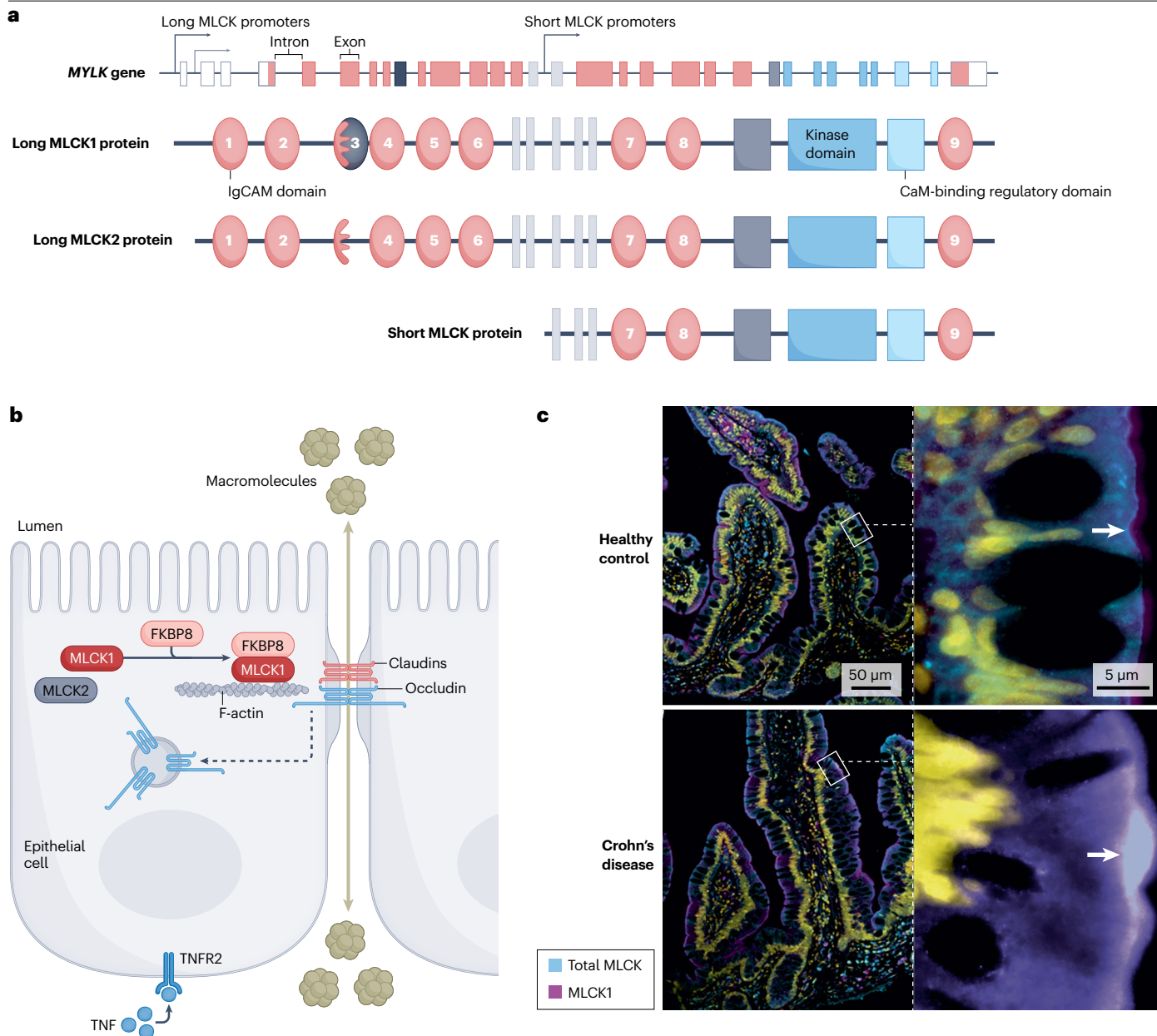
The two intestinal epithelial long MLCK splice variants differ by a single exon that is present in MLCK1 but not in MLCK2 (ref. 157). The 69 amino acids encoded by this exon complete the third immunoglobulin–cell adhesion molecule domain (IgCAM3)<sup>157</sup>. This domain must, therefore, contribute to preferential perijunctional localization of MLCK1 relative to MLCK2, which is distributed more diffusely through the cytoplasm<sup>141,157</sup>. TNF triggers even greater recruitment of MLCK1 to the perijunctional actomyosin ring<sup>141</sup>. Similarly, MLCK1 is concentrated within the perijunctional actomyosin ring in intestinal biopsy samples from patients with active IBD<sup>141,160,161</sup>. This inflammation-inducible perijunctional MLCK1 recruitment, together with increased barrier function after MLCK1-specific knockdown<sup>157</sup>, suggests that this splice variant is central to tight junction regulation.

These findings prompted solution of the IgCAM3 crystal structure, which was then used for *in silico* screening of small drug-like molecules that were predicted to bind to IgCAM3 (ref. 141). *In vitro* testing identified one compound that diverts MLCK1 from the perijunctional actomyosin ring and reverses cytokine-induced MLCK1 recruitment *in vivo* and in excised human intestine<sup>141</sup>. This molecule, known as divertin, blocks MLCK1-mediated phosphorylation of perijunctional MLC, thereby preventing subsequent occludin endocytosis and increases in leak pathway permeability<sup>141</sup>. Divertin does not, however, interfere with other functions of long or short MLCK, including its involvement in epithelial cell migration and smooth muscle contraction, because IgCAM3 is not present in short MLCK and is distant from the MLCK1 catalytic and regulatory domains<sup>141</sup>. This functional selectivity is critical, as *in vivo* inhibition of MLCK activity leads to hypotension and visceral paralysis, including aperistalsis, thereby precluding therapeutic use of enzymatic inhibitors<sup>162</sup>.

## Therapeutic targeting of MLCK1 recruitment

Divertin was remarkably effective in a mouse model of immune-mediated IBD – its effects were equal or superior to those of anti-TNF therapy by all measures, including survival<sup>141</sup>. This result supports the hypothesis that divertin-mediated interference with IgCAM3-mediated protein–protein interactions prevents perijunctional MLCK1 recruitment and, ultimately, disease progression.

A screen for potential MLCK1 binding partners was used to identify protein–protein interactions targeted by divertin. This process led to the discovery of tacrolimus binding protein FKBP8 as an MLCK1-interacting protein<sup>160</sup> (Fig. 4). MLCK1–FKBP8 interactions were specifically increased in TNF-treated intestinal epithelial monolayer cultures<sup>160</sup>. These interactions tended to occur near the perijunctional actomyosin ring<sup>160</sup>. Similarly, increases in perijunctional MLCK1–FKBP8 interactions were detected in biopsy samples from patients with Crohn's disease<sup>160</sup>. Tacrolimus also prevented TNF-induced perijunctional MLCK1 recruitment, MLCK1–FKBP8 interactions and



**Fig. 4 | Epithelial and smooth muscle myosin light chain kinase. a**, The human *MYLK* gene encodes long (non-muscle) and short (smooth muscle) isoforms of myosin light chain kinase (MLCK) protein. Two long MLCK transcriptional start sites that result in expression of the same protein have been identified. However, extensive alternative splicing within the 5' half of the transcript occurs, which, in intestinal epithelial cells, results in expression of two long MLCK splice variants, MLCK1 and MLCK2. These variants differ by a single exon (black), removal of which causes the third of the nine immunoglobulin-cell adhesion molecule (IgCAM) domains to be incomplete in long MLCK2. The short MLCK promoter is located within a long MLCK intron and drives transcription of smooth muscle MLCK, which lacks the six amino-terminal IgCAM domains that are present in long MLCK1. The kinase and

calmodulin (CaM)-binding domains are encoded by sequences within the 3' half of *MYLK* and are identical in long and short MLCK proteins. **b**, Inflammatory signals, such as tumour necrosis factor (TNF), trigger MLCK1 binding to FKBP8. This binding facilitates MLCK1 recruitment to the perijunctional actomyosin ring, where it phosphorylates MLC. This phosphorylation causes occludin internalization to increase leak pathway permeability. In contrast to MLCK1, MLCK2 distribution is not affected by TNF. **c**, MLCK1 expression and recruitment to the perijunctional actomyosin ring (arrows) are increased in Crohn's disease. The insets show the boxed areas. MLCK1 and total MLCK are shown, as the absence of unique MLCK2 sequences prevents generation of MLCK2-specific antibodies. Nuclei appear yellow. Part a adapted from ref. 141, Springer Nature Limited.

perijunctional MLC phosphorylation in human intestinal organoids<sup>160</sup>. Finally, tacrolimus prevented MLCK1 recruitment, occludin internalization and barrier loss after acute T cell activation in mice<sup>160</sup>. Surprisingly,

divertin did not interfere with FKBP8 binding to recombinant MLCK1 IgCAM domains one to four in vitro. Thus, despite the efficacy of divertin in experimental colitis, agents that prevent MLCK1 interactions

with FKBP8 or other MLCK1 binding partners should also be sought as potential therapeutics.

## Conclusions

The first tight junction protein, ZO-1 (ref. 33), was discovered nearly 40 years ago, and numerous other tight junction proteins have been identified since<sup>37–39,149,163–167</sup>, leading to substantial data describing the molecular interactions responsible for selective permeability and barrier regulation<sup>144,146,147,168–172</sup>. This work has led to conceptual advances, including the pore and leak pathway model of paracellular permeability<sup>47,173</sup>, and foundational understanding of tight junction cell biology, physiology and pathobiology.

In the same year that ZO-1 was discovered<sup>33</sup>, increased intestinal permeability was identified in a subset of first-degree relatives of people with Crohn's disease<sup>174</sup>. More recently, these modest leak pathway permeability increases were validated as an independent risk factor for IBD<sup>24</sup>. However, all human studies to date have relied on probes, such as lactulose and mannitol, that are too large to cross the pore pathway. Thus, despite increased claudin-2 expression in human disease<sup>64,86,87,92,175,176</sup> and experimental data showing that claudin-2-dependent pore pathway permeability increases exacerbate disease in mice<sup>50,98,100</sup>, the relevance of claudin-2 to human intestinal disease remains to be determined. Our understanding of how barrier function and disease are affected by polymorphisms in barrier-related genes associated with IBD, including *INAVA*<sup>177–179</sup> and *CDHI* (refs. 180,181), which encode innate immune activator and E-cadherin, respectively, is even more limited.

In conclusion, our understanding of how permeability of the pore and leak pathways contributes to health and disease remains relatively rudimentary. Thus, although much has been accomplished, much more remains to be discovered. Remaining challenges include identification of the sites and molecular structure of the leak pathway, elucidation of the differences that must exist between seemingly redundant claudins, and the definition of non-canonical tight junction protein functions. Nevertheless, the promise of tight junction-targeted therapeutics remains compelling, and implementation of such therapeutic approaches is growing progressively closer.

Published online: 25 April 2023

## References

- Simon, D. B. et al. Paracellin-1, a renal tight junction protein required for paracellular Mg<sup>2+</sup> resorption. *Science* **285**, 103–106 (1999).
- Kausalya, P. J. et al. Disease-associated mutations affect intracellular traffic and paracellular Mg<sup>2+</sup> transport function of claudin-16. *J. Clin. Invest.* **116**, 878–891 (2006).
- Wilcox, E. R. et al. Mutations in the gene encoding tight junction claudin-14 cause autosomal recessive deafness DFNB29. *Cell* **104**, 165–172 (2001).
- Ben-Yosef, T. et al. Claudin 14 knockout mice, a model for autosomal recessive deafness DFNB29, are deaf due to cochlear hair cell degeneration. *Hum. Mol. Genet.* **12**, 2049–2061 (2003).
- Zhao, J. et al. Multiple claudin–claudin *cis* interfaces are required for tight junction strand formation and inherent flexibility. *Commun. Biol.* **1**, 50 (2018).
- Wattenhofer, M. et al. Different mechanisms preclude mutant CLDN14 proteins from forming tight junctions in vitro. *Hum. Mutat.* **25**, 543–549 (2005).
- Hooper, L. V., Littman, D. R. & Macpherson, A. J. Interactions between the microbiota and the immune system. *Science* **336**, 1268–1273 (2012).
- Buckley, A. & Turner, J. R. Cell biology of tight junction barrier regulation and mucosal disease. *Cold Spring Harb. Perspect. Biol.* **10**, a029314 (2018).
- Wada, M., Tamura, A., Takahashi, N. & Tsukita, S. Loss of claudins 2 and 15 from mice causes defects in paracellular Na<sup>+</sup> flow and nutrient transport in gut and leads to death from malnutrition. *Gastroenterology* **144**, 369–380 (2013).
- Odenwald, M. A. & Turner, J. R. Intestinal permeability defects: is it time to treat? *Clin. Gastroenterol. Hepatol.* **11**, 1075–1083 (2013).
- Odenwald, M. A. & Turner, J. R. The intestinal epithelial barrier: a therapeutic target? *Nat. Rev. Gastroenterol. Hepatol.* **14**, 9–21 (2017).
- Camilleri, M. Leaky gut: mechanisms, measurement and clinical implications in humans. *Gut* **68**, 1516–1526 (2019).
- Brien, T. G., O'Hagan, R. & Muldowney, F. P. Chromium-51-EDTA in the determination of glomerular filtration rate. *Acta Radiol. Ther. Phys. Biol.* **8**, 523–529 (1969).
- Ukabam, S. O., Clamp, J. R. & Cooper, B. T. Abnormal small intestinal permeability to sugars in patients with Crohn's disease of the terminal ileum and colon. *Digestion* **27**, 70–74 (1983).
- Howden, C. W., Robertson, C., Duncan, A., Morris, A. J. & Russell, R. I. Comparison of different measurements of intestinal permeability in inflammatory bowel disease. *Am. J. Gastroenterol.* **86**, 1445–1449 (1991).
- Peeters, M. et al. Increased permeability of macroscopically normal small bowel in Crohn's disease. *Dig. Dis. Sci.* **39**, 2170–2176 (1994).
- Johansson, J. E. & Ekman, T. Gut toxicity during hemopoietic stem cell transplantation may predict acute graft-versus-host disease severity in patients. *Dig. Dis. Sci.* **52**, 2340–2345 (2007).
- Wyatt, J., Vogelsang, H., Hubl, W., Waldhoer, T. & Lochs, H. Intestinal permeability and the prediction of relapse in Crohn's disease. *Lancet* **341**, 1437–1439 (1993).
- D'Inca, R. et al. Intestinal permeability test as a predictor of clinical course in Crohn's disease. *Am. J. Gastroenterol.* **94**, 2956–2960 (1999).
- Bitton, A. et al. Predicting relapse in Crohn's disease: a biopsychosocial model. *Gut* **57**, 1386–1392 (2008).
- Meddings, J. B. & Swain, M. G. Environmental stress-induced gastrointestinal permeability is mediated by endogenous glucocorticoids in the rat. *Gastroenterology* **119**, 1019–1028 (2000).
- Buhner, S. et al. Genetic basis for increased intestinal permeability in families with Crohn's disease: role of *CARD15* 3020insC mutation? *Gut* **55**, 342–347 (2006).
- Torres, J. et al. Serum biomarkers identify patients who will develop inflammatory bowel diseases up to 5 years before diagnosis. *Gastroenterology* **159**, 96–104 (2020).
- Turpin, W. et al. Increased intestinal permeability is associated with later development of Crohn's disease. *Gastroenterology* **159**, 2092–2100.e5 (2020).
- Lee, S. H. et al. Anti-microbial antibody response is associated with future onset of Crohn's disease independent of biomarkers of altered gut barrier function, subclinical inflammation, and genetic risk. *Gastroenterology* **161**, 1540–1551 (2021).
- Edwinson, A. L. et al. Gut microbial  $\beta$ -glucuronidases regulate host luminal proteases and are depleted in irritable bowel syndrome. *Nat. Microbiol.* **7**, 680–694 (2022).
- Camilleri, M. & Gorman, H. Intestinal permeability and irritable bowel syndrome. *Neurogastroenterol. Motil.* **19**, 545–552 (2007).
- Edogawa, S. et al. Serine proteases as luminal mediators of intestinal barrier dysfunction and symptom severity in IBS. *Gut* **69**, 62–73 (2020).
- de Magistris, L. et al. Alterations of the intestinal barrier in patients with autism spectrum disorders and in their first-degree relatives. *J. Pediatr. Gastroenterol. Nutr.* **51**, 418–424 (2010).
- Hsiao, E. Y. et al. Microbiota modulate behavioral and physiological abnormalities associated with neurodevelopmental disorders. *Cell* **155**, 1451–1463 (2013).
- Incefi, O. et al. Targeted intestinal tight junction hyperpermeability alters the microbiome, behavior, and visceromotor responses. *Cell Mol. Gastroenterol. Hepatol.* **10**, 206–208.e3 (2020).
- Farquhar, M. & Palade, G. Junctional complexes in various epithelia. *J. Cell Biol.* **17**, 375–412 (1963).
- Stevenson, B. R., Siliciano, J. D., Mooseker, M. S. & Goodenough, D. A. Identification of ZO-1: a high molecular weight polypeptide associated with the tight junction (zonula occludens) in a variety of epithelia. *J. Cell Biol.* **103**, 755–766 (1986).
- Stevenson, B. R., Heintzelman, M. B., Anderson, J. M., Citi, S. & Mooseker, M. S. ZO-1 and cingulin: tight junction proteins with distinct identities and localizations. *Am. J. Physiol.* **257**, C621–C628 (1989).
- Jesaitis, L. A. & Goodenough, D. A. Molecular characterization and tissue distribution of ZO-2, a tight junction protein homologous to ZO-1 and the *Drosophila* discs-large tumor suppressor protein. *J. Cell Biol.* **124**, 949–961 (1994).
- Haskins, J., Gu, L., Wittchen, E. S., Hibbard, J. & Stevenson, B. R. ZO-3, a novel member of the MAGUK protein family found at the tight junction, interacts with ZO-1 and occludin. *J. Cell Biol.* **141**, 199–208 (1998).
- Citi, S., Sabanay, H., Jakes, R., Geiger, B. & Kendrick-Jones, J. Cingulin, a new peripheral component of tight junctions. *Nature* **333**, 272–276 (1988).
- Furuse, M. et al. Occludin: a novel integral membrane protein localizing at tight junctions. *J. Cell Biol.* **123**, 1777–1788 (1993).
- Furuse, M., Fujita, K., Hiiagi, T., Fujimoto, K. & Tsukita, S. Claudin-1 and -2: novel integral membrane proteins localizing at tight junctions with no sequence similarity to occludin. *J. Cell Biol.* **141**, 1539–1550 (1998).
- Mineta, K. et al. Predicted expansion of the claudin multigene family. *FEBS Lett.* **585**, 606–612 (2011).
- Sasaki, H. et al. Dynamic behavior of paired claudin strands within apposing plasma membranes. *Proc. Natl Acad. Sci. USA* **100**, 3971–3976 (2003).
- Angelow, S. & Yu, A. S. Structure-function studies of claudin extracellular domains by cysteine-scanning mutagenesis. *J. Biol. Chem.* **284**, 29205–29217 (2009).
- Yu, A. S. et al. Molecular basis for cation selectivity in claudin-2-based paracellular pores: identification of an electrostatic interaction site. *J. Gen. Physiol.* **133**, 111–127 (2009).
- Van Itallie, C. M. et al. The density of small tight junction pores varies among cell types and is increased by expression of claudin-2. *J. Cell Sci.* **121**, 298–305 (2008).



45. Weber, C. R. et al. Epithelial myosin light chain kinase activation induces mucosal interleukin-13 expression to alter tight junction ion selectivity. *J. Biol. Chem.* **285**, 12037–12046 (2010).
46. Weber, C. R. et al. Claudin-2-dependent paracellular channels are dynamically gated. *eLife* **4**, e09906 (2015).
47. Turner, J. R. Intestinal mucosal barrier function in health and disease. *Nat. Rev. Immunol.* **9**, 799–809 (2009).
48. Rosenthal, R. et al. Claudin-2-mediated cation and water transport share a common pore. *Acta Physiol.* **219**, 521–536 (2017).
49. Amasheh, S. et al. Claudin-2 expression induces cation-selective channels in tight junctions of epithelial cells. *J. Cell Sci.* **115**, 4969–4976 (2002).
50. Tsai, P. Y. et al. IL-22 upregulates epithelial claudin-2 to drive diarrhea and enteric pathogen clearance. *Cell Host Microbe* **21**, 671–681.e4 (2017).
51. Rosenthal, R. & Fromm, M. Significant water absorption goes paracellular in kidney proximal tubules. *Am. J. Physiol. Renal Physiol.* **306**, F51–F52 (2014).
52. Buschmann, M. M. et al. Occludin OCEL-domain interactions are required for maintenance and regulation of the tight junction barrier to macromolecular flux. *Mol. Biol. Cell* **24**, 3056–3068 (2013).
53. Yu, D. & Turner, J. R. Stimulus-induced reorganization of tight junction structure: the role of membrane traffic. *Biochim. Biophys. Acta* **1778**, 709–716 (2008).
54. Marchiando, A. M. et al. Caveolin-1-dependent occludin endocytosis is required for TNF-induced tight junction regulation in vivo. *J. Cell Biol.* **189**, 111–126 (2010).
55. Krug, S. M. et al. Tricellulin forms a barrier to macromolecules in tricellular tight junctions without affecting ion permeability. *Mol. Biol. Cell* **20**, 3713–3724 (2009).
56. Van Itallie, C. M., Fanning, A. S., Bridges, A. & Anderson, J. M. ZO-1 stabilizes the tight junction solute barrier through coupling to the perijunctional cytoskeleton. *Mol. Biol. Cell* **20**, 3930–3940 (2009).
57. Shen, L. & Turner, J. R. Actin depolymerization disrupts tight junctions via caveolae-mediated endocytosis. *Mol. Biol. Cell* **16**, 3919–3936 (2005).
58. Shen, L. et al. Myosin light chain phosphorylation regulates barrier function by remodeling tight junction structure. *J. Cell Sci.* **119**, 2095–2106 (2006).
59. Su, L. et al. Targeted epithelial tight junction dysfunction causes immune activation and contributes to development of experimental colitis. *Gastroenterology* **136**, 551–563 (2009).
60. Holmes, J. L., Van Itallie, C. M., Rasmussen, J. E. & Anderson, J. M. Claudin profiling in the mouse during postnatal intestinal development and along the gastrointestinal tract reveals complex expression patterns. *Gene Expr. Patterns* **6**, 581–588 (2006).
61. Colegio, O. R., Van Itallie, C. M., McCreah, H. J., Rahner, C. & Anderson, J. M. Claudins create charge-selective channels in the paracellular pathway between epithelial cells. *Am. J. Physiol. Cell Physiol.* **283**, C142–C147 (2002).
62. Rosenthal, R. et al. Claudin-15 forms a water channel through the tight junction with distinct function compared to claudin-2. *Acta Physiol.* **228**, e13334 (2020).
63. Tamura, A. et al. Loss of claudin-15, but not claudin-2, causes Na<sup>+</sup> deficiency and glucose malabsorption in mouse small intestine. *Gastroenterology* **140**, 913–923 (2011).
64. Tamura, A. et al. Megaintestine in claudin-15-deficient mice. *Gastroenterology* **134**, 523–534 (2008).
65. Kato, A. & Romero, M. F. Regulation of electroneutral NaCl absorption by the small intestine. *Annu. Rev. Physiol.* **73**, 261–281 (2011).
66. Ong, M., Yeruva, S., Sailer, A., Nilsen, S. P. & Turner, J. R. Differential regulation of claudin-2 and claudin-15 expression in children and adults with malabsorptive disease. *Lab. Invest.* **100**, 483–490 (2020).
67. Turner, J. R. et al. Physiological regulation of epithelial tight junctions is associated with myosin light-chain phosphorylation. *Am. J. Physiol.* **273**, C1378–C1385 (1997).
68. Berglund, J. J., Riegler, M., Zolotarevsky, Y., Wenzl, E. & Turner, J. R. Regulation of human jejunal transmucosal resistance and MLC phosphorylation by Na<sup>+</sup>-glucose cotransport. *Am. J. Physiol. Gastrointest. Liver Physiol.* **281**, G1487–G1493 (2001).
69. Madara, J. L. & Pappenheimer, J. R. Structural basis for physiological regulation of paracellular pathways in intestinal epithelia. *J. Membr. Biol.* **100**, 149–164 (1987).
70. Pappenheimer, J. R. Physiological regulation of transepithelial impedance in the intestinal mucosa of rats and hamsters. *J. Membr. Biol.* **100**, 137–148 (1987).
71. Pappenheimer, J. R. & Reiss, K. Z. Contribution of solvent drag through intercellular junctions to absorption of nutrients by the small intestine of the rat. *J. Membr. Biol.* **100**, 123–136 (1987).
72. Meddings, J. B. & Westergaard, H. Intestinal glucose transport using perfused rat jejunum in vivo: model analysis and derivation of corrected kinetic constants. *Clin. Sci.* **76**, 403–413 (1989).
73. Turner, J. R., Cohen, D. E., Mrsny, R. J. & Madara, J. L. Noninvasive in vivo analysis of human small intestinal paracellular absorption: regulation by Na<sup>+</sup>-glucose cotransport. *Dig. Dis. Sci.* **45**, 2122–2126 (2000).
74. Fihn, B. M., Sjoqvist, A. & Jodal, M. Permeability of the rat small intestinal epithelium along the villus-crypt axis: effects of glucose transport. *Gastroenterology* **119**, 1029–1036 (2000).
75. Lane, J. S. et al. Paracellular glucose transport plays a minor role in the unanesthetized dog. *Am. J. Physiol.* **276**, G789–G794 (1999).
76. Uhing, M. R. & Arango, V. Intestinal absorption of proline and leucine in chronically catheterized rats. *Gastroenterology* **113**, 865–874 (1997).
77. Uhing, M. R. & Kimura, R. E. The effect of surgical bowel manipulation and anesthesia on intestinal glucose absorption in rats. *J. Clin. Invest.* **95**, 2790–2798 (1995).
78. Turner, J. R. & Madara, J. L. Physiological regulation of intestinal epithelial tight junctions as a consequence of Na<sup>+</sup>-coupled nutrient transport. *Gastroenterology* **109**, 1391–1396 (1995).
79. Fine, K. D., Ana, C. A. S., Porter, J. L. & Fordtran, J. S. Mechanism by which glucose stimulates the passive absorption of small solutes by the human jejunum in-vivo. *Gastroenterology* **107**, 389–395 (1994).
80. Fine, K. D., Santa Ana, C. A., Porter, J. L. & Fordtran, J. S. Effect of D-glucose on intestinal permeability and its passive absorption in human small intestine in vivo. *Gastroenterology* **105**, 1117–1125 (1993).
81. Fine, K. D., Santa Ana, C. A., Porter, J. L. & Fordtran, J. S. Effect of changing intestinal flow rate on a measurement of intestinal permeability. *Gastroenterology* **108**, 983–989 (1995).
82. Fordtran, J. S. Stimulation of active and passive sodium absorption by sugars in the human jejunum. *J. Clin. Invest.* **55**, 728–737 (1975).
83. Turner, J. R. Show me the pathway! Regulation of paracellular permeability by Na<sup>+</sup>-glucose cotransport. *Adv. Drug. Deliv. Rev.* **41**, 265–281 (2000).
84. Kellett, G. L. The facilitated component of intestinal glucose absorption. *J. Physiol.* **531**, 585–595 (2001).
85. Atisook, K., Carlson, S. & Madara, J. L. Effects of phlorizin and sodium on glucose-elicited alterations of cell junctions in intestinal epithelia. *Am. J. Physiol.* **258**, C77–C85 (1990).
86. Heller, F. et al. Interleukin-13 is the key effector Th2 cytokine in ulcerative colitis that affects epithelial tight junctions, apoptosis, and cell restitution. *Gastroenterology* **129**, 550–564 (2005).
87. Zeissig, S. et al. Changes in expression and distribution of claudin 2, 5 and 8 lead to discontinuous tight junctions and barrier dysfunction in active Crohn's disease. *Gut* **56**, 61–72 (2007).
88. Schumann, M. et al. Cell polarity-determining proteins Par-3 and PP-1 are involved in epithelial tight junction defects in coliac disease. *Gut* **61**, 220–228 (2012).
89. Martinez, C. et al. Diarrhoea-predominant irritable bowel syndrome: an organic disorder with structural abnormalities in the jejunal epithelial barrier. *Gut* **62**, 1160–1168 (2013).
90. Epple, H. J. et al. Impairment of the intestinal barrier is evident in untreated but absent in suppressively treated HIV-infected patients. *Gut* **58**, 220–227 (2009).
91. Bergmann, K. R. et al. *Bifidobacteria* stabilize claudins at tight junctions and prevent intestinal barrier dysfunction in mouse necrotizing enterocolitis. *Am. J. Pathol.* **182**, 1595–1606 (2013).
92. Epple, H. J. et al. Architectural and functional alterations of the small intestinal mucosa in classical Whipple's disease. *Mucosal Immunol.* **10**, 1542–1552 (2017).
93. Kinugasa, T., Sakaguchi, T., Gu, X. & Reinecker, H. C. Claudins regulate the intestinal barrier in response to immune mediators. *Gastroenterology* **118**, 1001–1011 (2000).
94. Suzuki, T., Yoshinaga, N. & Tanabe, S. Interleukin-6 (IL-6) regulates claudin-2 expression and tight junction permeability in intestinal epithelium. *J. Biol. Chem.* **286**, 31263–31271 (2011).
95. Yamamoto, T. et al. IL-1β regulates expression of Cx32, occludin, and claudin-2 of rat hepatocytes via distinct signal transduction pathways. *Exp. Cell Res.* **299**, 427–441 (2004).
96. Amasheh, M., Andres, S., Amasheh, S., Fromm, M. & Schulzke, J. D. Barrier effects of nutritional factors. *Ann. NY Acad. Sci. USA* **1165**, 267–273 (2009).
97. Zheng, L. et al. Microbial-derived butyrate promotes epithelial barrier function through IL-10 receptor-dependent repression of claudin-2. *J. Immunol.* **199**, 2976–2984 (2017).
98. Raju, P. et al. Inactivation of paracellular cation-selective claudin-2 channels attenuates immune-mediated experimental colitis in mice. *J. Clin. Invest.* **130**, 5197–5208 (2020).
99. Curry, J. N. et al. Claudin-2 deficiency associates with hypercalciuria in mice and human kidney stone disease. *J. Clin. Invest.* **130**, 1948–1960 (2020).
100. Ahmad, R. et al. Targeted colonic claudin-2 expression renders resistance to epithelial injury, induces immune suppression, and protects from colitis. *Mucosal Immunol.* **7**, 1340–1353 (2014).
101. Buchert, M. et al. Sympleskin promotes tumorigenicity by up-regulating claudin-2 expression. *Proc. Natl Acad. Sci. USA* **107**, 2628–2633 (2010).
102. Dhawan, P. et al. Claudin-2 expression increases tumorigenicity of colon cancer cells: role of epidermal growth factor receptor activation. *Oncogene* **30**, 3234–3247 (2011).
103. Denizot, J. et al. Adherent-invasive *Escherichia coli* induce claudin-2 expression and barrier defect in CEABAC10 mice and Crohn's disease patients. *Inflamm. Bowel Dis.* **18**, 294–304 (2012).
104. Muto, S. et al. Claudin-2-deficient mice are defective in the leaky and cation-selective paracellular permeability properties of renal proximal tubules. *Proc. Natl Acad. Sci. USA* **107**, 8011–8016 (2010).
105. Rosenthal, R. et al. Claudin-2, a component of the tight junction, forms a paracellular water channel. *J. Cell Sci.* **123**, 1913–1921 (2010).
106. Davison, W. C. A bacteriological and clinical consideration of bacillary dysentery in adults and children. *Medicine* **1**, 389–510 (1922).
107. Wu, C. et al. Induction of pathogenic TH17 cells by inducible salt-sensing kinase SGK1. *Nature* **496**, 513–517 (2013).
108. Safa, K. et al. Salt accelerates allograft rejection through serum- and glucocorticoid-regulated kinase-1-dependent inhibition of regulatory T cells. *J. Am. Soc. Nephrol.* **26**, 2341–2347 (2015).
109. Aguiar, S. L. F. et al. High-salt diet induces IL-17-dependent gut inflammation and exacerbates colitis in mice. *Front. Immunol.* **8**, 1969 (2017).
110. Monteleone, I. et al. Sodium chloride-enriched diet enhanced inflammatory cytokine production and exacerbated experimental colitis in mice. *J. Crohns Colitis* **11**, 237–245 (2017).



111. Wei, Y. et al. High salt diet stimulates gut Th17 response and exacerbates TNBS-induced colitis in mice. *Oncotarget* **8**, 70–82 (2017).
112. Toussiot, E., Bereau, M., Vauchy, C. & Saas, P. Could sodium chloride be an environmental trigger for immune-mediated diseases? An overview of the experimental and clinical evidence. *Front. Physiol.* **9**, 440 (2018).
113. Matthias, J. et al. Salt generates antiinflammatory Th17 cells but amplifies their pathogenicity in proinflammatory cytokine microenvironments. *J. Clin. Invest.* **130**, 4587–4600 (2020).
114. Kuang, R., O’Keefe, S. J. D., Ramos Del Aguila de Rivers, C., Koutroumpakis, F. & Binion, D. G. Is salt at fault? Dietary salt consumption and inflammatory bowel disease. *Inflamm. Bowel Dis.* **29**, 140–150 (2023).
115. Koch, S. et al. Protein kinase CK2 is a critical regulator of epithelial homeostasis in chronic intestinal inflammation. *Mucosal Immunol.* **6**, 136–145 (2013).
116. Ma, J. et al. Identification of selective claudin cation channel blockers [abstract]. *Gastroenterology* **160** (Suppl. 3), S33–S34 (2021).
117. Raleigh, D. R. et al. Occludin S408 phosphorylation regulates tight junction protein interactions and barrier function. *J. Cell Biol.* **193**, 565–582 (2011).
118. Takigawa, M. et al. Creation of a claudin-2 binder and its tight junction-modulating activity in a human intestinal model. *J. Pharmacol. Exp. Ther.* **363**, 444–451 (2017).
119. Amoozadeh, Y. et al. Cell confluence regulates claudin-2 expression: possible role for ZO-1 and Rac. *Am. J. Physiol. Cell Physiol.* **314**, C366–C378 (2018).
120. Ikari, A. et al. Nuclear distribution of claudin-2 increases cell proliferation in human lung adenocarcinoma cells. *Biochim. Biophys. Acta* **1843**, 2079–2088 (2014).
121. Pinto, D., Robine, S., Jaisser, F., El Marjou, F. E. & Louvard, D. Regulatory sequences of the mouse villin gene that efficiently drive transgenic expression in immature and differentiated epithelial cells of small and large intestines. *J. Biol. Chem.* **274**, 6476–6482 (1999).
122. Buhrmann, C. et al. Resveratrol induces chemosensitization to 5-fluorouracil through up-regulation of intercellular junctions, epithelial-to-mesenchymal transition and apoptosis in colorectal cancer. *Biochem. Pharmacol.* **98**, 51–68 (2015).
123. Abu-Farsakh, S., Wu, T., Lalonde, A., Sun, J. & Zhou, Z. High expression of claudin-2 in esophageal carcinoma and precancerous lesions is significantly associated with the bile salt receptors VDR and TGR5. *BMC Gastroenterol.* **17**, 33 (2017).
124. Zolotarevsky, Y. et al. A membrane-permeant peptide that inhibits MLC kinase restores barrier function in in vitro models of intestinal disease. *Gastroenterology* **123**, 163–172 (2002).
125. Clayburgh, D. R. et al. Epithelial myosin light chain kinase-dependent barrier dysfunction mediates T cell activation-induced diarrhea in vivo. *J. Clin. Invest.* **115**, 2702–2715 (2005).
126. Scott, K. G., Meddings, J. B., Kirk, D. R., Lees-Miller, S. P. & Buret, A. G. Intestinal infection with *Giardia* spp. reduces epithelial barrier function in a myosin light chain kinase-dependent fashion. *Gastroenterology* **123**, 1179–1190 (2002).
127. Yu, D. et al. MLCK-dependent exchange and actin binding region-dependent anchoring of ZO-1 regulate tight junction barrier function. *Proc. Natl Acad. Sci. USA* **107**, 8237–8241 (2010).
128. Kaminsky, L. W., Al-Sadi, R. & Ma, T. Y. IL-1 $\beta$  and the intestinal epithelial tight junction barrier. *Front. Immunol.* **12**, 767456 (2021).
129. Schwarz, B. T. et al. LIGHT signals directly to intestinal epithelia to cause barrier dysfunction via cytoskeletal and endocytic mechanisms. *Gastroenterology* **132**, 2383–2394 (2007).
130. Nighth, M. et al. Lipopolysaccharide-induced increase in intestinal epithelial tight permeability is mediated by Toll-like receptor 4/myeloid differentiation primary response 88 (MyD88) activation of myosin light chain kinase expression. *Am. J. Pathol.* **187**, 2698–2710 (2017).
131. Nighth, M. et al. Lipopolysaccharide-induced increase in intestinal permeability is mediated by TAK-1 activation of IKK and MLCK/MYLK gene. *Am. J. Pathol.* **189**, 797–812 (2019).
132. Wang, F. et al. IFN- $\gamma$ -induced TNFR2 expression is required for TNF-dependent intestinal epithelial barrier dysfunction. *Gastroenterology* **131**, 1153–1163 (2006).
133. Wang, J. et al. The critical role of LIGHT in promoting intestinal inflammation and Crohn’s disease. *J. Immunol.* **174**, 8173–8182 (2005).
134. Su, L. et al. TNFR2 activates MLCK-dependent tight junction dysregulation to cause apoptosis-mediated barrier loss and experimental colitis. *Gastroenterology* **145**, 407–415 (2013).
135. Graham, W. V. et al. Tumor necrosis factor-induced long myosin light chain kinase transcription is regulated by differentiation-dependent signaling events. Characterization of the human long myosin light chain kinase promoter. *J. Biol. Chem.* **281**, 26205–26215 (2006).
136. Ma, T. Y., Boivin, M. A., Ye, D., Pedram, A. & Said, H. M. Mechanism of TNF- $\alpha$  modulation of Caco-2 intestinal epithelial tight junction barrier: role of myosin light-chain kinase protein expression. *Am. J. Physiol. Gastrointest. Liver Physiol.* **288**, G422–G430 (2005).
137. Nalle, S. C. et al. Graft-versus-host disease propagation depends on increased intestinal epithelial tight junction permeability. *J. Clin. Invest.* **129**, 902–914 (2019).
138. Al-Sadi, R., Ye, D., Said, H. M. & Ma, T. Y. IL-1 $\beta$ -induced increase in intestinal epithelial tight junction permeability is mediated by MEKK-1 activation of canonical NF- $\kappa$ B pathway. *Am. J. Pathol.* **177**, 2310–2322 (2010).
139. Al-Sadi, R. et al. Mechanism of IL-1 $\beta$  modulation of intestinal epithelial barrier involves p38 kinase and activating transcription factor-2 activation. *J. Immunol.* **190**, 6596–6606 (2013).
140. Wang, F. et al. Interferon- $\gamma$  and tumor necrosis factor- $\alpha$  synergize to induce intestinal epithelial barrier dysfunction by up-regulating myosin light chain kinase expression. *Am. J. Pathol.* **166**, 409–419 (2005).
141. Graham, W. V. et al. Intracellular MLCK1 diversion reverses barrier loss to restore mucosal homeostasis. *Nat. Med.* **25**, 690–700 (2019).
142. Yu, A. S. et al. Knockdown of occludin expression leads to diverse phenotypic alterations in epithelial cells. *Am. J. Physiol. Cell Physiol.* **288**, C1231–C1241 (2005).
143. Van Itallie, C. M., Fanning, A. S., Holmes, J. & Anderson, J. M. Occludin is required for cytokine-induced regulation of tight junction barriers. *J. Cell Sci.* **123**, 2844–2852 (2010).
144. Nusrat, A. et al. The coiled-coil domain of occludin can act to organize structural and functional elements of the epithelial tight junction. *J. Biol. Chem.* **275**, 29816–29822 (2000).
145. Kuo, W. T. et al. Inflammation-induced occludin downregulation limits epithelial apoptosis by suppressing caspase-3 expression. *Gastroenterology* **157**, 1323–1337 (2019).
146. Saito, A. C. et al. Occludin and tricellulin facilitate formation of anastomosing tight-junction strand network to improve barrier function. *Mol. Biol. Cell* **32**, 722–738 (2021).
147. Sugawara, T., Furuse, K., Otani, T., Wakayama, T. & Furuse, M. Angulin-1 seals tricellular contacts independently of tricellulin and claudins. *J. Cell Biol.* **220**, e202005062 (2021).
148. Shashikanth, N., Rizzo, H. E., Pongkorpsakol, P., Heneghan, J. F. & Turner, J. R. Electrophysiologic analysis of tight junction size and charge selectivity. *Curr. Protoc.* **1**, e143 (2021).
149. Raleigh, D. R. et al. Tight junction-associated MARVEL proteins marvelD3, tricellulin, and occludin have distinct but overlapping functions. *Mol. Biol. Cell* **21**, 1200–1213 (2010).
150. Ikenouchi, J., Sasaki, H., Tsukita, S., Furuse, M. & Tsukita, S. Loss of occludin affects tricellular localization of tricellulin. *Mol. Biol. Cell* **19**, 4687–4693 (2008).
151. Beeman, N., Webb, P. G. & Baumgartner, H. K. Occludin is required for apoptosis when claudin–claudin interactions are disrupted. *Cell Death Dis.* **3**, e273 (2012).
152. Wang, Z. et al. Raf-1 represses expression of the tight junction protein occludin via activation of the zinc-finger transcription factor slug. *Oncogene* **26**, 1222–1230 (2007).
153. Wang, Z., Mandell, K. J., Parkos, C. A., Mrsny, R. J. & Nusrat, A. The second loop of occludin is required for suppression of Raf-1-induced tumor growth. *Oncogene* **24**, 4412–4420 (2005).
154. Li, D. & Mrsny, R. J. Oncogenic Raf-1 disrupts epithelial tight junctions via downregulation of occludin. *J. Cell Biol.* **148**, 791–800 (2000).
155. Osanai, M. et al. Epigenetic silencing of occludin promotes tumorigenic and metastatic properties of cancer cells via modulations of unique sets of apoptosis-associated genes. *Cancer Res.* **66**, 9125–9133 (2006).
156. Lazar, V. & Garcia, J. G. A single human myosin light chain kinase gene (MLCK; MYLK). *Genomics* **57**, 256–267 (1999).
157. Clayburgh, D. R. et al. A differentiation-dependent splice variant of myosin light chain kinase, MLCK1, regulates epithelial tight junction permeability. *J. Biol. Chem.* **279**, 55506–55513 (2004).
158. Ye, D., Ma, I. & Ma, T. Y. Molecular mechanism of tumor necrosis factor- $\alpha$  modulation of intestinal epithelial tight junction barrier. *Am. J. Physiol. Gastrointest. Liver Physiol.* **290**, G496–G504 (2006).
159. Chanez-Paredes, S. D. et al. Distinct steady-state properties and TNF responses of epithelial long myosin light chain kinase (MLCK) splice variants. Preprint at [bioRxiv](https://doi.org/10.1101/2022.10.13.512159) <https://doi.org/10.1101/2022.10.13.512159> (2023).
160. Zuo, L. et al. Tacrolimus-binding protein FKBP8 directs myosin light chain kinase-dependent barrier regulation and is a potential therapeutic target in Crohn’s disease. *Gut* <https://doi.org/10.1136/gutjnl-2021-326534> (2022).
161. Chanez-Paredes, S. D., Abtahi, S., Kuo, W. T. & Turner, J. R. Differentiating between tight junction-dependent and tight junction-independent intestinal barrier loss in vivo. *Methods Mol. Biol.* **2367**, 249–271 (2021).
162. He, W. Q. et al. Myosin light chain kinase is central to smooth muscle contraction and required for gastrointestinal motility in mice. *Gastroenterology* **135**, 610–620 (2008).
163. Laukoetter, M. G. et al. JAM-A regulates permeability and inflammation in the intestine in vivo. *J. Exp. Med.* **204**, 3067–3076 (2007).
164. Vetrano, S. et al. Unique role of junctional adhesion molecule-A in maintaining mucosal homeostasis in inflammatory bowel disease. *Gastroenterology* **135**, 173–184 (2008).
165. Ikenouchi, J. et al. Tricellulin constitutes a novel barrier at tricellular contacts of epithelial cells. *J. Cell Biol.* **171**, 939–945 (2005).
166. Masuda, S. et al. LSR defines cell corners for tricellular tight junction formation in epithelial cells. *J. Cell Sci.* **124**, 548–555 (2011).
167. Higashi, T., Katsuno, T., Kitajiri, S. & Furuse, M. Deficiency of angulin-2/ILDR1, a tricellular tight junction-associated membrane protein, causes deafness with cochlear hair cell degeneration in mice. *PLoS ONE* **10**, e0120674 (2015).
168. Srivastava, A. K. et al. Serine 408 phosphorylation is a molecular switch that regulates structure and function of the occludin  $\alpha$ -helical bundle. *Proc. Natl Acad. Sci. USA* **119**, e2204618119 (2022).
169. Otani, T. et al. Claudins and JAM-A coordinately regulate tight junction formation and epithelial polarity. *J. Cell Biol.* **218**, 3372–3396 (2019).
170. Hempstock, W. et al. Angulin-2/ILDR1, a tricellular tight junction protein, does not affect water transport in the mouse large intestine. *Sci. Rep.* **10**, 10374 (2020).

171. Otani, T. & Furuse, M. Tight junction structure and function revisited. *Trends Cell Biol.* **30**, 805–817 (2020).
172. Beutel, O., Maraschini, R., Pombo-Garcia, K., Martin-Lemaitre, C. & Honigsmann, A. Phase separation of zonula occludens proteins drives formation of tight junctions. *Cell* **179**, 923–936.e11 (2019).
173. Anderson, J. M. & Van Itallie, C. M. Physiology and function of the tight junction. *Cold Spring Harb. Perspect. Biol.* **1**, a002584 (2009).
174. Hollander, D. et al. Increased intestinal permeability in patients with Crohn's disease and their relatives. A possible etiologic factor. *Ann. Intern. Med.* **105**, 883–885 (1986).
175. Kuo, W. T. et al. The tight junction protein ZO-1 is dispensable for barrier function but critical for effective mucosal repair. *Gastroenterology* **161**, 1924–1939 (2021).
176. Schumann, M. et al. Defective tight junctions in refractory celiac disease. *Ann. NY Acad. Sci. USA* **1258**, 43–51 (2012).
177. Chang, D. et al. Small-molecule modulators of INAVA cytosolic condensate and cell–cell junction assemblies. *J. Cell Biol.* **220**, e202007177 (2021).
178. Luong, P. et al. INAVA-ARNO complexes bridge mucosal barrier function with inflammatory signaling. *eLife* **7**, e38539 (2018).
179. Mohanan, V. et al. *C1orf106* is a colitis risk gene that regulates stability of epithelial adherens junctions. *Science* **359**, 1161–1166 (2018).
180. Kline, K. T. et al. Neonatal injury increases gut permeability by epigenetically suppressing E-cadherin in adulthood. *J. Immunol.* **204**, 980–989 (2020).
181. Muise, A. M. et al. Polymorphisms in E-cadherin (CDH1) result in a mis-localised cytoplasmic protein that is associated with Crohn's disease. *Gut* **58**, 1121–1127 (2009).
182. Arnott, I. D., Kingstone, K. & Ghosh, S. Abnormal intestinal permeability predicts relapse in inactive Crohn disease. *Scand. J. Gastroenterol.* **35**, 1163–1169 (2000).
183. Turpin, W. et al. Analysis of genetic association of intestinal permeability in healthy first-degree relatives of patients with Crohn's disease. *Inflamm. Bowel Dis.* **25**, 1796–1804 (2019).
184. Madsen, K. L. et al. Interleukin-10 gene-deficient mice develop a primary intestinal permeability defect in response to enteric microflora. *Inflamm. Bowel Dis.* **5**, 262–270 (1999).
185. Arrieta, M. C., Madsen, K., Doyle, J. & Meddings, J. Reducing small intestinal permeability attenuates colitis in the IL10 gene-deficient mouse. *Gut* **58**, 41–48 (2009).
186. Lounder, D. T. et al. Lower levels of vitamin A are associated with increased gastrointestinal graft-versus-host disease in children. *Blood* **129**, 2801–2807 (2017).
187. Brown, G. R., Lee, E. & Thiele, D. L. TNF-TNFR2 interactions are critical for the development of intestinal graft-versus-host disease in MHC class II-disparate (C57BL/6J–C57BL/6J→bm12) F<sub>1</sub> mice. *J. Immunol.* **168**, 3065–3071 (2002).
188. Noth, R. et al. Increased intestinal permeability and tight junction disruption by altered expression and localization of occludin in a murine graft versus host disease model. *BMC Gastroenterol.* **11**, 109 (2011).
189. Nalle, S. C. et al. Recipient NK cell inactivation and intestinal barrier loss are required for MHC-matched graft-versus-host disease. *Sci. Transl. Med.* **6**, 243ra287 (2014).
190. Hanash, A. M. et al. Interleukin-22 protects intestinal stem cells from immune-mediated tissue damage and regulates sensitivity to graft versus host disease. *Immunity* **37**, 339–350 (2012).
191. Takashima, S. et al. The Wnt agonist R-spondin1 regulates systemic graft-versus-host disease by protecting intestinal stem cells. *J. Exp. Med.* **208**, 285–294 (2011).
192. Bosi, E. et al. Increased intestinal permeability precedes clinical onset of type 1 diabetes. *Diabetologia* **49**, 2824–2827 (2006).
193. Horton, F., Wright, J., Smith, L., Hinton, P. J. & Robertson, M. D. Increased intestinal permeability to oral chromium (<sup>51</sup>Cr)-EDTA in human type 2 diabetes. *Diabet. Med.* **31**, 559–563 (2014).
194. Genser, L. et al. Increased jejunal permeability in human obesity is revealed by a lipid challenge and is linked to inflammation and type 2 diabetes. *J. Pathol.* **246**, 217–230 (2018).
195. Meddings, J. B., Jarand, J., Urbanski, S. J., Hardin, J. & Gall, D. G. Increased gastrointestinal permeability is an early lesion in the spontaneously diabetic BB rat. *Am. J. Physiol.* **276**, G951–G957 (1999).
196. Watts, T. et al. Role of the intestinal tight junction modulator zonulin in the pathogenesis of type 1 diabetes in BB diabetic-prone rats. *Proc. Natl Acad. Sci. USA* **102**, 2916–2921 (2005).
197. Damms-Machado, A. et al. Gut permeability is related to body weight, fatty liver disease, and insulin resistance in obese individuals undergoing weight reduction. *Am. J. Clin. Nutr.* **105**, 127–135 (2017).
198. Cox, A. J. et al. Increased intestinal permeability as a risk factor for type 2 diabetes. *Diabetes Metab.* **43**, 163–166 (2017).
199. Wilbrink, J. et al. Intestinal barrier function in morbid obesity: results of a prospective study on the effect of sleeve gastrectomy. *Int. J. Obes.* **44**, 368–376 (2020).
200. Wigg, A. J. et al. The role of small intestinal bacterial overgrowth, intestinal permeability, endotoxaemia, and tumour necrosis factor  $\alpha$  in the pathogenesis of non-alcoholic steatohepatitis. *Gut* **48**, 206–211 (2001).
201. Kaushal, K. et al. Demonstration of gut-barrier dysfunction in early stages of non-alcoholic fatty liver disease: a proof-of-concept study. *J. Clin. Exp. Hepatol.* **12**, 1102–1113 (2022).
202. Thaiss, C. A. et al. Hyperglycemia drives intestinal barrier dysfunction and risk for enteric infection. *Science* **359**, 1376–1383 (2018).
203. Nascimento, J. C., Matheus, V. A., Oliveira, R. B., Tada, S. F. S. & Collares-Buzato, C. B. High-fat diet induces disruption of the tight junction-mediated paracellular barrier in the proximal small intestine before the onset of type 2 diabetes and endotoxemia. *Dig. Dis. Sci.* **66**, 3359–3374 (2021).
204. Bashir, M. et al. Enhanced gastrointestinal passive paracellular permeability contributes to the obesity-associated hyperoxaluria. *Am. J. Physiol. Gastrointest. Liver Physiol.* **316**, G1–G14 (2019).
205. Lee, J. C. et al. Obesogenic diet-induced gut barrier dysfunction and pathobiont expansion aggravate experimental colitis. *PLoS ONE* **12**, e0187515 (2017).
206. Lam, Y. Y. et al. Increased gut permeability and microbiota change associate with mesenteric fat inflammation and metabolic dysfunction in diet-induced obese mice. *PLoS ONE* **7**, e34233 (2012).
207. Cheng, C., Tan, J., Qian, W., Zhang, L. & Hou, X. Gut inflammation exacerbates hepatic injury in the high-fat diet induced NAFLD mouse: attention to the gut-vascular barrier dysfunction. *Life Sci.* **209**, 157–166 (2018).
208. Zhang, Z., Li, M., Cui, B. & Chen, X. Antibiotic disruption of the gut microbiota enhances the murine hepatic dysfunction associated with a high-salt diet. *Front. Pharmacol.* **13**, 829686 (2022).
209. Sharpstone, D. et al. Small intestinal transit, absorption, and permeability in patients with AIDS with and without diarrhoea. *Gut* **45**, 70–76 (1999).
210. Keating, J. et al. Intestinal absorptive capacity, intestinal permeability and jejunal histology in HIV and their relation to diarrhoea. *Gut* **37**, 623–629 (1995).
211. Brechley, J. M. et al. Microbial translocation is a cause of systemic immune activation in chronic HIV infection. *Nat. Med.* **12**, 1365–1371 (2006).
212. Maingat, F. et al. Inflammation and epithelial cell injury in AIDS enteropathy: involvement of endoplasmic reticulum stress. *FASEB J.* **25**, 2211–2220 (2011).
213. Doig, C. J. et al. Increased intestinal permeability is associated with the development of multiple organ dysfunction syndrome in critically ill ICU patients. *Am. J. Respir. Crit. Care Med.* **158**, 444–451 (1998).
214. Fink, M. P., Antonsson, J. B., Wang, H. L. & Rothschild, H. R. Increased intestinal permeability in endotoxic pigs. Mesenteric hypoperfusion as an etiologic factor. *Arch. Surg.* **126**, 211–218 (1991).
215. Deitch, E. A., Morrison, J., Berg, R. & Specian, R. D. Effect of hemorrhagic shock on bacterial translocation, intestinal morphology, and intestinal permeability in conventional and antibiotic-decontaminated rats. *Crit. Care Med.* **18**, 529–536 (1990).
216. Novosad, V. L., Richards, J. L., Phillips, N. A., King, M. A. & Clanton, T. L. Regional susceptibility to stress-induced intestinal injury in the mouse. *Am. J. Physiol. Gastrointest. Liver Physiol.* **305**, G418–G426 (2013).
217. Zabs, A. et al. Inhibition of long myosin light-chain kinase activation alleviates intestinal damage after binge ethanol exposure and burn injury. *Am. J. Physiol. Gastrointest. Liver Physiol.* **303**, G705–G712 (2012).
218. Dunlop, S. P. et al. Abnormal intestinal permeability in subgroups of diarrhea-predominant irritable bowel syndromes. *Am. J. Gastroenterol.* **101**, 1288–1294 (2006).
219. Marshall, J. K. et al. Intestinal permeability in patients with irritable bowel syndrome after a waterborne outbreak of acute gastroenteritis in Walkerton, Ontario. *Aliment. Pharmacol. Ther.* **20**, 1317–1322 (2004).
220. Magnus, Y. et al. Bile acid diarrhea is associated with increased intestinal permeability compared with irritable bowel syndrome-diarrhea. *Gastroenterology* **162**, 1343–1345.e1 (2022).
221. Saffouri, G. B. et al. Small intestinal microbial dysbiosis underlies symptoms associated with functional gastrointestinal disorders. *Nat. Commun.* **10**, 2012 (2019).
222. Rao, A. S. et al. Urine sugars for in vivo gut permeability: validation and comparisons in irritable bowel syndrome-diarrhea and controls. *Am. J. Physiol. Gastrointest. Liver Physiol.* **301**, G919–G928 (2011).
223. Wu, R. L. et al. Gluten-induced symptoms in diarrhea-predominant irritable bowel syndrome are associated with increased myosin light chain kinase activity and claudin-15 expression. *Lab. Invest.* **97**, 14–23 (2017).
224. Peters, S. A. et al. Constipation-predominant irritable bowel syndrome females have normal colonic barrier and secretory function. *Am. J. Gastroenterol.* **112**, 913–923 (2017).
225. McOmber, M. et al. Increased gut permeability in first-degree relatives of children with irritable bowel syndrome or functional abdominal pain. *Clin. Gastroenterol. Hepatol.* **18**, 375–384.e1 (2020).
226. Prospero, L. et al. Psychological and gastrointestinal symptoms of patients with irritable bowel syndrome undergoing a low-FODMAP diet: the role of the intestinal barrier. *Nutrients* **13**, 2469 (2021).
227. Witt, S. T. et al. Interactions between gut permeability and brain structure and function in health and irritable bowel syndrome. *Neuroimage Clin.* **21**, 101602 (2019).
228. Awad, K. et al. Impaired intestinal permeability of tricellular tight junctions in patients with irritable bowel syndrome with mixed bowel habits (IBS-M). *Cells* **12**, 236 (2023).
229. Li, L. et al. Increased small intestinal permeability and RNA expression profiles of mucosa from terminal ileum in patients with diarrhoea-predominant irritable bowel syndrome. *Dig. Liver Dis.* **48**, 880–887 (2016).
230. Long, Y. et al. MLCK-mediated intestinal permeability promotes immune activation and visceral hypersensitivity in PI-IBS mice. *Neurogastroenterol. Motil.* **30**, e13348 (2018).
231. Zhao, L. et al. Changes in intestinal barrier protein expression and intestinal flora in a rat model of visceral hypersensitivity. *Neurogastroenterol. Motil.* **34**, e14299 (2022).
232. van Elburg, R. M., Uil, J. J., Mulder, C. J. & Heymans, H. S. Intestinal permeability in patients with coeliac disease and relatives of patients with coeliac disease. *Gut* **34**, 354–357 (1993).
233. Duerksen, D. R., Wilhelm-Boyles, C. & Parry, D. M. Intestinal permeability in long-term follow-up of patients with celiac disease on a gluten-free diet. *Dig. Dis. Sci.* **50**, 785–790 (2005).

234. Smecuol, E. et al. Gastrointestinal permeability in celiac disease. *Gastroenterology* **112**, 1129–1136 (1997).
235. Leffler, D. A. et al. A randomized, double-blind study of larazotide acetate to prevent the activation of celiac disease during gluten challenge. *Am. J. Gastroenterol.* **107**, 1554–1562 (2012).
236. Natividad, J. M. et al. Host responses to intestinal microbial antigens in gluten-sensitive mice. *PLoS ONE* **4**, e6472 (2009).
237. Verdu, E. F. et al. Gliadin-dependent neuromuscular and epithelial secretory responses in gluten-sensitive HLA-DQ8 transgenic mice. *Am. J. Physiol. Gastrointest. Liver Physiol.* **294**, G217–G225 (2008).
238. Lamas, B. et al. Aryl hydrocarbon receptor ligand production by the gut microbiota is decreased in celiac disease leading to intestinal inflammation. *Sci. Transl. Med.* **12**, eaba0624 (2020).
239. Abtahi, S. et al. Intestinal epithelial digestive, transport, and barrier protein expression is increased in environmental enteric dysfunction. *Lab. Invest.* **103**, 100036 (2023).
240. Chen, R. Y. et al. Duodenal microbiota in stunted undernourished children with enteropathy. *N. Engl. J. Med.* **383**, 321–333 (2020).
241. Semba, R. D. et al. Metabolic alterations in children with environmental enteric dysfunction. *Sci. Rep.* **6**, 28009 (2016).
242. Singh, A. et al. Biomarkers of environmental enteric dysfunction are differently associated with recovery and growth among children with moderate acute malnutrition in Sierra Leone. *Am. J. Clin. Nutr.* **113**, 1556–1564 (2021).
243. Lauer, J. M. et al. Markers of environmental enteric dysfunction are associated with poor growth and iron status in rural Ugandan infants. *J. Nutr.* **150**, 2175–2182 (2020).
244. McCormick, B. J. J. et al. Intestinal permeability and inflammation mediate the association between nutrient density of complementary foods and biochemical measures of micronutrient status in young children: results from the MAL-ED study. *Am. J. Clin. Nutr.* **110**, 1015–1025 (2019).
245. Yu, J. et al. Environmental enteric dysfunction includes a broad spectrum of inflammatory responses and epithelial repair processes. *Cell Mol. Gastroenterol. Hepatol.* **2**, 158–174.e1 (2016).
246. Amadi, B. et al. Impaired barrier function and autoantibody generation in malnutrition enteropathy in Zambia. *EBioMedicine* **22**, 191–199 (2017).
247. Lima, A. A. et al. Mucosal injury and disruption of intestinal barrier function in HIV-infected individuals with and without diarrhea and cryptosporidiosis in northeast Brazil. *Am. J. Gastroenterol.* **92**, 1861–1866 (1997).
248. Bhattacharjee, A. et al. Environmental enteric dysfunction induces regulatory T cells that inhibit local CD4<sup>+</sup> T cell responses and impair oral vaccine efficacy. *Immunity* **54**, 1745–1757.e7 (2021).
249. Salameh, E. et al. Modeling undernutrition with enteropathy in mice. *Sci. Rep.* **10**, 15581 (2020).
250. Ventura, M. T. et al. Intestinal permeability in patients with adverse reactions to food. *Dig. Liver Dis.* **38**, 732–736 (2006).
251. Jackson, P. G., Lessof, M. H., Baker, R. W., Ferrett, J. & MacDonald, D. M. Intestinal permeability in patients with eczema and food allergy. *Lancet* **1**, 1285–1286 (1981).
252. Rath, T., Dieterich, W., Kätscher-Murad, C., Neurath, M. F. & Zopf, Y. Cross-sectional imaging of intestinal barrier dysfunction by confocal laser endomicroscopy can identify patients with food allergy in vivo with high sensitivity. *Sci. Rep.* **11**, 12777 (2021).
253. Chen, T. et al. Food allergens affect the intestinal tight junction permeability in inducing intestinal food allergy in rats. *Asian Pac. J. Allergy Immunol.* **32**, 345–353 (2014).
254. Forbes, E. E. et al. IL-9- and mast cell-mediated intestinal permeability predisposes to oral antigen hypersensitivity. *J. Exp. Med.* **205**, 897–913 (2008).
255. Leyva-Castillo, J. M. et al. Mechanical skin injury promotes food anaphylaxis by driving intestinal mast cell expansion. *Immunity* **50**, 1262–1275.e4 (2019).
256. Mathias, C. B. et al. IgE-mediated systemic anaphylaxis and impaired tolerance to food antigens in mice with enhanced IL-4 receptor signaling. *J. Allergy Clin. Immunol.* **127**, 795–805.e6 (2011).
257. Steffka, A. T. et al. Commensal bacteria protect against food allergen sensitization. *Proc. Natl Acad. Sci. USA* **111**, 13145–13150 (2014).
258. Johnston, J. D., Harvey, C. J., Menzies, I. S. & Treacher, D. F. Gastrointestinal permeability and absorptive capacity in sepsis. *Crit. Care Med.* **24**, 1144–1149 (1996).
259. Sipola, S. et al. Colon epithelial injury in critically ill colectomized patients: aberration of tight junction proteins and Toll-like receptors. *Minerva Anesthesiol.* **83**, 1017–1025 (2017).
260. Klaus, D. A. et al. Increased plasma zonulin in patients with sepsis. *Biochem. Med.* **23**, 107–111 (2013).
261. Tatuco-Babet, O. A. et al. Serum zonulin measured by enzyme-linked immunosorbent assay may not be a reliable marker of small intestinal permeability in healthy adults. *Nutr. Res.* **78**, 82–92 (2020).
262. Yoseph, B. P. et al. Mechanisms of intestinal barrier dysfunction in sepsis. *Shock* **46**, 52–59 (2016).
263. Banerjee, S. et al. C/EBP $\delta$  protects from radiation-induced intestinal injury and sepsis by suppression of inflammatory and nitrosative stress. *Sci. Rep.* **9**, 13953 (2019).
264. Fredenburgh, L. E. et al. Cyclooxygenase-2 deficiency leads to intestinal barrier dysfunction and increased mortality during polymicrobial sepsis. *J. Immunol.* **187**, 5255–5267 (2011).
265. Hu, Q. et al. STING-mediated intestinal barrier dysfunction contributes to lethal sepsis. *EBioMedicine* **41**, 497–508 (2019).
266. Klingensmith, N. J. et al. Junctional adhesion molecule-A deletion increases phagocytosis and improves survival in a murine model of sepsis. *JCI Insight* **7**, e156255 (2022).
267. Jin, X. et al. Epidemiological, clinical and virological characteristics of 74 cases of coronavirus-infected disease 2019 (COVID-19) with gastrointestinal symptoms. *Gut* **69**, 1002–1009 (2020).
268. Zang, R. et al. TMPRSS2 and TMPRSS4 promote SARS-CoV-2 infection of human small intestinal enterocytes. *Sci. Immunol.* **5**, eabc3582 (2020).
269. Ziegler, C. G. K. et al. SARS-CoV-2 receptor ACE2 is an interferon-stimulated gene in human airway epithelial cells and is detected in specific cell subsets across tissues. *Cell* **181**, 1016–1035.e9 (2020).
270. Livanos, A. E. et al. Intestinal host response to SARS-CoV-2 infection and COVID-19 outcomes in patients with gastrointestinal symptoms. *Gastroenterology* **160**, 2435–2450.e4 (2021).
271. Suarez-Farinas, M. et al. Intestinal inflammation modulates the expression of ACE2 and TMPRSS2 and potentially overlaps with the pathogenesis of SARS-CoV-2-related disease. *Gastroenterology* **160**, 287–301.e20 (2021).
272. Ungaro, R. C. et al. Impact of medications on COVID-19 outcomes in inflammatory bowel disease: analysis of more than 6000 patients from an international registry. *Gastroenterology* **162**, 316–319.e5 (2022).
273. Yantiss, R. K. et al. Intestinal abnormalities in patients with SARS-CoV-2 infection: histopathologic changes reflect mechanisms of disease. *Am. J. Surg. Pathol.* **46**, 89–96 (2022).
274. Yonker, L. M. et al. Zonulin antagonist, larazotide (AT1001), as an adjuvant treatment for multisystem inflammatory syndrome in children: a case series. *Crit. Care Explor.* **10**, e0641 (2022).
275. Yonker, L. M. et al. Multisystem inflammatory syndrome in children is driven by zonulin-dependent loss of gut mucosal barrier. *J. Clin. Invest.* **131**, e149633 (2021).
276. Giron, L. B. et al. Plasma markers of disrupted gut permeability in severe COVID-19 patients. *Front. Immunol.* **12**, 686240 (2021).
277. Davies, K. N., King, D., Billington, D. & Barrett, J. A. Intestinal permeability and orocaecal transit time in elderly patients with Parkinson's disease. *Postgrad. Med. J.* **72**, 164–167 (1996).
278. Perez-Pardo, P. et al. Role of TLR4 in the gut-brain axis in Parkinson's disease: a translational study from men to mice. *Gut* **68**, 829–843 (2019).
279. Hijazi, Z. et al. Intestinal permeability is increased in bronchial asthma. *Arch. Dis. Child.* **89**, 227–229 (2004).
280. Barbiellini Amidei, C. et al. Acid-suppressive medications in the first year of life and risk of childhood asthma: a population-based birth cohort study. *Eur. Respir. J.* **56**, 2000197 (2020).
281. D'Costa, S. et al. Mast cell corticotropin-releasing factor subtype 2 suppresses mast cell degranulation and limits the severity of anaphylaxis and stress-induced intestinal permeability. *J. Allergy Clin. Immunol.* **143**, 1865–1877.e4 (2019).
282. Hong, Y. et al. IL-17A aggravates asthma-induced intestinal immune injury by promoting neutrophil trafficking. *J. Leukoc. Biol.* **112**, 425–435 (2022).
283. Yacyshyn, B., Meddings, J., Sadowski, D. & Bowen-Yacyshyn, M. B. Multiple sclerosis patients have peripheral blood CD45RO<sup>+</sup> B cells and increased intestinal permeability. *Dig. Dis. Sci.* **41**, 2493–2498 (1996).
284. Sjöström, B. et al. Increased intestinal permeability in primary Sjögren's syndrome and multiple sclerosis. *J. Transl. Autoimmun.* **4**, 100082 (2021).
285. Buscarino, M. C. et al. Altered intestinal permeability in patients with relapsing-remitting multiple sclerosis: a pilot study. *Mult. Scler.* **23**, 442–446 (2017).
286. Wu, S., Yi, J., Zhang, Y. G., Zhou, J. & Sun, J. Leaky intestine and impaired microbiome in an amyotrophic lateral sclerosis mouse model. *Physiol. Rep.* **3**, e12356 (2015).
287. Matei, D. E. et al. Intestinal barrier dysfunction plays an integral role in arthritis pathology and can be targeted to ameliorate disease. *Med* **2**, 864–883.e9 (2021).
288. Tajik, N. et al. Targeting zonulin and intestinal epithelial barrier function to prevent onset of arthritis. *Nat. Commun.* **11**, 1995 (2020).
289. Liu, B. et al. Anti-TNF- $\alpha$  therapy alters the gut microbiota in proteoglycan-induced ankylosing spondylitis in mice. *Microbiologyopen* **8**, e927 (2019).
290. Wen, J. et al. Epithelial HIF2 $\alpha$  expression induces intestinal barrier dysfunction and exacerbation of arthritis. *Ann. Rheum. Dis.* **81**, 1119–1130 (2022).
291. Gunzel, D. & Fromm, M. Claudins and other tight junction proteins. *Compr. Physiol.* **2**, 1819–1852 (2012).
292. Gunzel, D. & Yu, A. S. Claudins and the modulation of tight junction permeability. *Physiol. Rev.* **93**, 525–569 (2013).
293. Tsukita, S., Tanaka, H. & Tamura, A. The claudins: from tight junctions to biological systems. *Trends Biochem. Sci.* **44**, 141–152 (2019).
294. Gunzel, D. Claudins: vital partners in transcellular and paracellular transport coupling. *Pflügers Arch.* **469**, 35–44 (2017).
295. Al-Sadi, R., Ye, D., Dokladny, K. & Ma, T. Y. Mechanism of IL-1 $\beta$ -induced increase in intestinal epithelial tight junction permeability. *J. Immunol.* **180**, 5653–5661 (2008).
296. Krug, S. M. et al. Tricellulin is regulated via interleukin-13-receptor  $\alpha$ 2, affects macromolecule uptake, and is decreased in ulcerative colitis. *Mucosal Immunol.* **11**, 345–356 (2018).
297. Sweat, Y. Y. et al. In *Tight Junctions* (ed. González-Mariscal, L.) 85–107 (Springer, 2022).

## Acknowledgements

The authors are supported by National Institute of Diabetes and Digestive and Kidney Disease grants R01DK61931 and R01DK68271 (J.R.T.), U.S. Department of Defense award PR181271 (J.R.T.), and the Belgian American Educational Foundation (X.H.). The authors also greatly

---

appreciate the contributions of S. Hagen, N. Shashikanth, L. Zuo, S. Abtahi, L.-S. Beier and G. Marsischky, as well as H. Marlatt (Nationwide Histology) and T. S. Davanzo (Slaybaugh Studios). The freeze–fracture electron micrograph in Fig. 1 was provided by the late E. E. Schneeberger (Harvard Medical School), an exceptional friend, pathologist and scientist.

## Author contributions

A.H. and J.R.T. wrote the manuscript. All authors researched data for the article, made substantial contributions to discussion of content and reviewed and edited the manuscript before submission.

## Competing interests

J.R.T. is a consultant for Entrinsic and Kallyope. The other authors declare no competing interests.

## Additional information

**Peer review information** *Nature Reviews Gastroenterology & Hepatology* thanks A. Keshavarzian, R. Rao and the other, anonymous, reviewer(s) for their contribution to the peer review of this work.

**Publisher's note** Springer Nature remains neutral with regard to jurisdictional claims in published maps and institutional affiliations.

Springer Nature or its licensor (e.g. a society or other partner) holds exclusive rights to this article under a publishing agreement with the author(s) or other rightsholder(s); author self-archiving of the accepted manuscript version of this article is solely governed by the terms of such publishing agreement and applicable law.

© Springer Nature Limited 2023