



## CLINICAL RESEARCH ARTICLE

# Surgery requiring general anesthesia in preterm infants is associated with altered brain volumes at term equivalent age and neurodevelopmental impairment

Brian H. Walsh<sup>1,2</sup>, Rachel A. Paul<sup>3</sup>, Terrie E. Inder<sup>1</sup>, Joshua S. Shimony<sup>4</sup>, Christopher D. Smyser<sup>4,5,6</sup> and Cynthia E. Rogers<sup>6,7</sup>

**BACKGROUND:** The aim of the study was to describe and contrast the brain development and outcome among very preterm infants that were and were not exposed to surgery requiring general anesthesia prior to term equivalent age (TEA).

**METHODS:** Preterm infants born  $\leq 30$  weeks' gestation who did ( $n = 25$ ) and did not ( $n = 59$ ) have surgery requiring general anesthesia during the preterm period were studied. At TEA, infants had MRI scans performed with measures of brain tissue volumes, cortical surface area, Gyrfication Index, and white matter microstructure. Neurodevelopmental follow-up with the Bayley Scales of Infant and Toddler Development, Third Edition was undertaken at 2 years of corrected age. Multivariate models, adjusted for clinical and social risk factors, were used to compare the groups.

**RESULTS:** After controlling for clinical and social variables, preterm infants exposed to surgical anesthesia demonstrated decreased relative white matter volumes at TEA and lower cognitive and motor composite scores at 2-year follow-up. Those with longer surgical exposure demonstrated the greatest decrease in white matter volumes and lower cognitive and motor outcomes at age 2 years.

**CONCLUSIONS:** Very preterm infants who required surgery during the preterm period had lower white matter volumes at TEA and worse neurodevelopmental outcome at age 2 years.

*Pediatric Research* (2021) 89:1200–1207; <https://doi.org/10.1038/s41390-020-1030-3>

**IMPACT:**

- In very preterm infants, there is an association between surgery requiring general anesthesia during the preterm period and reduced white matter volume on MRI at TEA and lower cognitive and motor composite scores at age 2 years.
- It is known that the very preterm infant's brain undergoes rapid growth during the period corresponding to the third trimester.
- The current study suggests an association between surgery requiring general anesthesia during this period and worse outcomes.

**INTRODUCTION**

There is concern that exposure to surgery and anesthesia during early childhood may be associated with heightened risk for developmental delays.<sup>1–3</sup> Animal models exposed to surgical anesthetics show increased apoptosis of neurons and oligodendrocytes, decreased neurogenesis and neuronal differentiation, and reduced axonal growth.<sup>4,5</sup> However, several recent prospective studies have demonstrated that not all anesthetic exposure in early childhood results in developmental delay.<sup>6,7</sup> Rather, these delays may be associated with higher cumulative anesthetic exposure and/or exposure during periods of increased neurobiological vulnerability.<sup>8</sup>

The fetal and infant brain undergoes exponential growth during the last trimester of pregnancy.<sup>9</sup> Animal data have demonstrated increased vulnerability to anesthetic-associated injury during

these periods of increased synaptogenesis and growth.<sup>8</sup> For infants born very premature, this rapid brain growth occurs in the ex utero environment and during a period of increased risk of surgical anesthetic exposure due to the typical co-morbidities of prematurity. Indeed, prior studies have demonstrated that preterm infants who undergo surgery during the neonatal period have an increased risk for altered brain growth and impaired cognitive development.<sup>3,10–12</sup> These studies hypothesized that anesthetic exposure may have mediated some of the negative impacts; however, they were unable to provide details on the type and length of anesthesia exposure during the surgical procedures limiting further analysis and interpretation.

The aim of this study was to compare the brain development and outcome among very preterm (VPT) infants who were and were not exposed to surgery requiring general anesthesia prior to

<sup>1</sup>Department of Pediatric Newborn Medicine, Brigham and Women's Hospital, Boston, MA, USA; <sup>2</sup>Department of Neonatology, Cork University Maternity Hospital, Cork, Ireland; <sup>3</sup>Department of Obstetrics and Gynecology, Washington University School of Medicine, St. Louis, MO, USA; <sup>4</sup>Mallinckrodt Institute of Radiology, Washington University School of Medicine, St. Louis, MO, USA; <sup>5</sup>Department of Neurology, Washington University School of Medicine, St. Louis, MO, USA; <sup>6</sup>Department of Pediatrics, Washington University School of Medicine, St. Louis, MO, USA and <sup>7</sup>Department of Psychiatry, Washington University School of Medicine, St. Louis, MO, USA  
Correspondence: Brian H. Walsh (brianhenry.walsh@hse.ie)

Received: 4 December 2019 Revised: 4 December 2019 Accepted: 11 June 2020

Published online: 23 June 2020

term equivalent age (TEA). This was achieved by analyzing the association between both any exposure and duration of exposure to surgical anesthesia on quantitative magnetic resonance imaging (MRI) metrics from scans performed at TEA and standardized neurodevelopmental assessments at 2 years of corrected age.

## METHODS

### Participants

VPT infants were recruited from a level III Neonatal Intensive Care Unit (NICU) in St. Louis, MO between 2007 and 2010 into a prospective longitudinal observational cohort study of VPT infants undergoing MRI at TEA and long-term neurodevelopmental outcome. Parental informed consent was obtained for each subject prior to participation in the study. The current study represents a retrospective secondary analysis of this larger cohort study. The study was approved by the Washington University Human Research Protection Office. Infants born  $\leq 30$  weeks' gestational age (GA) were eligible for inclusion. Infants with confounding conditions that may have independently resulted in abnormalities on cerebral MRI were excluded from this analysis, including chromosomal abnormalities, congenital anomalies, or proven congenital infections.

Demographic and clinical information was prospectively collected from the infant and maternal medical record. Information regarding anesthetic exposure during the NICU stay was retrospectively gathered from the medical chart. This included type of surgery, type of anesthetic, duration of surgery, and postmenstrual age (PMA) at surgery. Data on cumulative anesthetic dose were not available, therefore the total surgical duration was used as a surrogate for this. For analysis, total surgical duration was dichotomized above/below the median split.

The perioperative medical records were retrospectively reviewed to identify any intraoperative physiological instability that could have confounded the results. Specific details that were sought included review of the anesthetic and operative notes for documentation of any critical event (chest compressions, hypoxic event, documented hypotension, or treatment for hypotension (inotropes or fluid boluses)). In addition, the perioperative vital flow charts were reviewed; data collected included minimum recorded systolic, diastolic and mean blood pressure, highest and lowest heart rate, any episode of heart rate  $< 90$  beats per minute (and duration thereof), lowest recorded oxygen saturation, and any period with oxygen saturation  $< 85\%$  (and duration thereof). Lastly, the laboratory records were reviewed, and all intraoperative and postoperative (on the day of surgery) blood gases were extracted and reviewed for signs of metabolic acidosis during the perioperative period.

### Magnetic resonance imaging

**Imaging protocol.** Infants were imaged without sedation while asleep or resting quietly after feeding at TEA (35–43 weeks' PMA).<sup>13</sup> Images were acquired on a 3-T Tim Trio system (Siemens, Erlangen, Germany). Structural images included a T1-weighted sagittal, magnetization-prepared rapid gradient echo sequence (repetition time (TR) = 1550 ms, inversion time (TI) = 1,100 ms, echo time (TE) = 3.05 ms, flip angle = 15°,  $1 \times 1 \times 1.25$  mm<sup>3</sup> voxels), and a T2-weighted fast spin echo sequence (TR = 8210 ms, TE = 161 ms,  $1 \times 1 \times 1$  mm<sup>3</sup> voxels). The diffusion-weighted sequence acquisition parameters included 128 mm field of view, TR = 13,300 ms, TE = 112 ms, 1266 Hz/Px bandwidth, voxel size  $1.2 \times 1.2 \times 1.2$  mm<sup>3</sup> and 31–48b amplitudes and directions ranging from 0 to 1200 s/mm<sup>2</sup>. Qualitative interpretation of the MR images was undertaken using a systematic scoring for global injury and growth impairment as previously described.<sup>14</sup> A score of  $\geq 8$  on the Kidokoro global brain abnormality score was considered a moderate or severe cerebral injury.

**Volumetric and surface-based processing.** Volumetry was performed using the Advanced Normalization Tools (ANTs) software package (<http://www.picsl.upenn.edu/ANTS>), followed by manual correction using the ITK-Snap software tools.<sup>15</sup> Total tissue volume (TTV) was calculated for each scan by summing the volume of white, cortical gray, deep nuclear gray matter, and the cerebellum. Semiautomated cortical segmentation was based on the LIGASE method followed by manual editing in Caret.<sup>16</sup> Surface-based morphometry was performed.<sup>17</sup> Cortical surface area (CSA) was calculated using the mid-thickness surface for both the left and right hemispheres. Gyrfication Index (GI), the ratio of the area of the mid-thickness CSA to the surface area of the cerebral hull, was also calculated for both right and left hemispheres.

**Diffusion tensor imaging (DTI) processing.** Tract-based spatial statistics (TBSS) was used to perform voxel-wise analysis of whole-brain DTI data.<sup>18</sup> Fractional anisotropy (FA) maps were generated from each subject's motion-corrected, aligned, and averaged DTI data set using FMRIB's Diffusion Toolbox and FMRIB's Brain Extraction Tool for skull stripping. These FA maps were used to develop a target template for registration. A mean FA image was calculated and used to produce the mean FA skeleton, which represented the center of white matter tracts. The FA images generated were projected onto the skeleton and set at a threshold of FA  $> 0.20$  for voxel-wise cross-subject statistics, comparing those who did and did not have anesthesia exposure during the neonatal period, adjusting for PMA at scan.

### Neurodevelopmental outcome

Subjects were targeted for assessment at 18 months to 2 years of corrected age (mean chronological age at assessment was 24.5 months, standard deviation 3.3 months) by a blinded psychometrician using the Bayley Scales of Infant and Toddler Development, Third Edition (Bayley-III). Outcomes included Bayley-III cognitive, language, and motor composite scores. In addition, parents completed a medical history for the follow-up visit, indicating if the child had undergone any surgery between NICU discharge and follow-up.

### Clinical and social risk scores

Premature infants are exposed to a multitude of risk factors for neurodevelopmental impairment. To account for these risk factors, a clinical propensity score and a social risk index were calculated. The clinical propensity score developed included the following risk factors: GA, birth weight z-score, gender, duration of ventilation in hours, the presence of patent ductus arteriosus (PDA) requiring treatment, and confirmed sepsis. The Sociodemographic Risk Index developed included the following risk factors: maternal education, race, public health insurance, maternal age at birth, and single-parent household. We utilized these composite measures as controlling for multiple covariates would not have been appropriate using conventional multivariable methods due to the small number of case events.

### Data analysis

Data were analyzed using SPSS version 23. Normally distributed data were reported as mean values with standard deviation, and comparisons were performed using independent *t* test. Non-parametric data were reported as median values with interquartile range (IQR) or range as specified in the text, and comparisons were performed using Mann–Whitney *U* test or Kruskal–Wallis *H* Test, as appropriate. Chi-squared test was used when comparing proportions.

The clinical propensity score was calculated using a conditional forward stepwise logistic regression ( $p(\text{in}) = 0.3$ ,  $p(\text{out}) = 0.15$ ). Variables entered into the regression model were chosen as they are known risk factors for neurodevelopmental impairment in VPT infants and included variables that differed between the surgical

and non-surgical population. To develop the model, the identified clinical risk factors were entered as continuous variables (GA at birth and birth weight z-score) or transformed into dichotomous variables representing child exposure to at-risk (1) or no-risk (0) factors based on (a) clinical cut-offs or (b) the lowest/highest tertile of the sample distribution. The following variables were entered into the model: GA at birth, sex (male = 1/female = 0), medical or surgical intervention for PDA (yes = 1/no = 0), birth weight z-score, length of mechanical ventilation (at or above upper quartile = 1/below upper quartile = 0), and culture-positive sepsis (yes = 1/no = 0). Given the distribution of the continuous propensity score, it was dichotomized  $\leq 0.25$  (Supplementary Fig. S1).

The Sociodemographic Risk Index (range 0–5) was calculated using five maternal factors (absent = 0, present = 1). Factors of interest included no high school diploma or General Educational Development, African-American, public health insurance, young maternal age at birth ( $\leq 18$  years), and single-parent household. To impute missing data, the mean of the remaining components was substituted for the missing one(s) in calculating the sum. The social risk index was not calculated for individuals missing >50% of the required factors within the respective domains.<sup>19–21</sup>

Surgical anesthetic exposure was assessed as (1) exposure versus no exposure and (2) total surgical duration (cumulative time for all surgical procedures performed). Linear mixed models were developed to explore the impact of the surgical anesthetic exposure on tissue volumes, CSA, GI, and Bayley-III composite scores. For tissue volumes, separate models were developed for both absolute tissue volumes and relative tissue volumes (the relative tissue volumes were calculated as the tissue subtype expressed as a percentage of the TTV). Models of the absolute volumes explored the effect of surgery requiring anesthesia on the growth of brain tissue types in isolation, while analysis of relative volumes explored if the exposure had a greater effect on the growth of a particular tissue type relative to the infant's other brain tissues.<sup>22</sup>

In all models, a family ID variable was entered as a random effect accounting for sibling correlation due to the high percentage of multiple births. Models examining absolute volumes, CSA, and GI included PMA at scan as a covariate. Models examining relative volumes could not adjust for PMA at scan due to collinearity between PMA and TTV. Additional covariates in all models included the clinical risk propensity score and the presence of moderate/severe cerebral injury on qualitative MRI assessment based on the Kidokoro score.<sup>14</sup> Models of neurodevelopmental outcome were additionally adjusted for the Sociodemographic Risk Index and any surgical anesthetic exposure following NICU discharge ascertained from parent report and clinical records in the first 2 years of life. Statistical significance was taken as  $p < 0.05$ , and post hoc analysis was performed using the least significant difference method.

## RESULTS

The study population comprised 84 children who underwent both term-equivalent MRI and developmental assessment at age 2 years (Supplementary Fig. S2). Twenty-five of these children had an anesthetic exposure prior to TEA and 59 infants did not. All infants had an MRI at TEA. Infants with no surgical anesthetic exposure had an MRI slightly sooner than infants with surgical anesthetic exposure (No exposure versus Exposure, 37 weeks' PMA (36–38) versus 38 week' PMA (37–40),  $p = 0.002$ ). The group that was exposed to anesthesia had a lower mean GA and birth weight (Table 1).

Among the 25 children who underwent a surgical procedure, there were 55 surgical procedures performed. Review of the perioperative documentation found no evidence of any adverse events or periods of significant physiological instability occurring

**Table 1.** Demographic, perinatal, and clinical details.

	No anesthesia (n = 59)	Anesthesia (n = 25)	p
Gestational age (weeks)	27 (26–28)	25 (24–27)	<0.001
Birth weight (g)	1012 ± 256	787 ± 228	<0.001
z-score	−0.41 ± 0.96	−0.67 ± 1.03	0.25
Prenatal steroids	54 (92)	23 (92)	0.94
Maternal age at birth	27 (22–33)	29 (24–33)	0.22
Singleton	37 (63)	14 (56)	0.56
Male	24 (41)	15 (60)	0.10
Race			
African-American	21 (36)	12 (48)	0.28
Caucasian	33 (56)	12 (48)	
Asian	3 (5)	1 (4)	
Biracial	2 (3)	0	
Duration of ventilation (hours)	24 (5–96)	696 (180–1103)	<0.001
Confirmed sepsis	14 (24)	14 (56)	0.004
PDA treated	15 (25)	18 (72)	<0.001
NEC	2 (3)	3 (12)	0.13
Cranial ultrasound			
IVH grades 3–4	2 (3%)	4 (16%)	0.06
Cystic PVL	0	0	
MRI abnormality score			0.08
Normal (0–3)	13 (22)	1 (4)	
Mild (4–7)	24 (41)	10 (40)	
Moderate (8–11)	8 (14)	7 (28)	
Severe (>12)	7 (12)	6 (24)	
Significant MRI injury	15 (25)	13 (52)	0.07
Surgical and anesthetic data			
Number of surgeries			–
None	59 (100)	0	
One		14 (56)	
Two or more		11 (44)	
Total surgical duration (min)	–	148 (63–244)	–
Type of surgery			
PDA ligation	–	15 (60)	–
Retinopathy surgery	–	8 (32)	–
Inguinal surgery	–	5 (20)	–
Abdominal surgery	–	5 (20)	–
Number of anesthetic agents	–	2 (1–3)	–
Type of anesthetic			
Isoflurane/sevoflurane/ desflurane	–	16 (64)	–
Fentanyl	–	20 (80)	–
Propofol	–	9 (36)	–
Ketamine	–	5 (20)	–
Midazolam	–	4 (16)	–
Anesthesia after discharge	8 (14)	11 (44)	<0.001

Data are represented as N (%), mean ± SD, and median (IQR). PMA postmenstrual age, TEA term equivalent age, PDA patent ductus arteriosus medically or surgically treated, NEC necrotizing enterocolitis.

in any infant during the perioperative period. Two infants did have an intraoperative mean arterial pressure (MAP) that was <30 mmHg (an infant with corrected GA (cGA) of 29 weeks with a MAP of 27 mmHg, and an infant with cGA 27 weeks with a MAP of 25 mmHg). However, the remainder of both infant's vitals were within normal parameters, their blood gases were not acidotic, and the clinicians present determined that they were hemodynamically stable throughout.

The median age of first surgical exposure was 27 weeks PMA (IQR: 26–32 weeks), and the median time from first surgery to MRI being performed was 11 weeks (IQR 6.5–13 weeks). There was no

**Table 2.** Association between surgical anesthesia and volumetric and cortical surface measures at TEA.

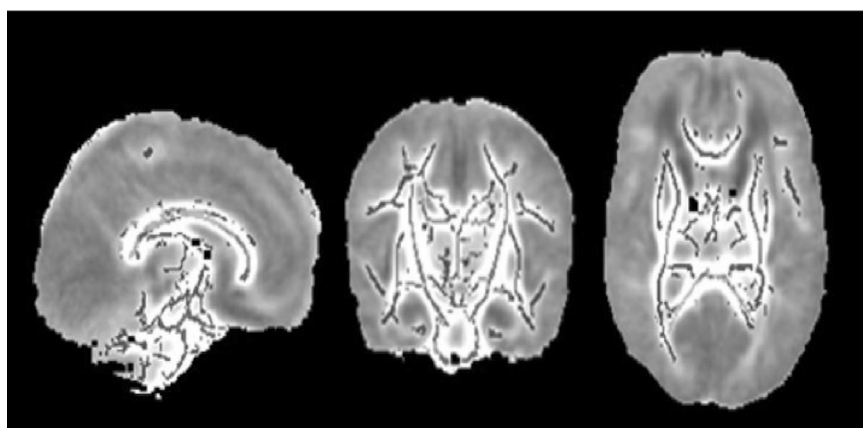
	No surgery	Surgery	$p^a$	$p^b$	No surgery	Surgery	$p^a$	$p^c$
	Absolute volumes				Relative volumes (%)			
Tissue volumes (cm <sup>3</sup> )								
White matter	133.3 (1.8)	126.3 (2.0)	0.056	0.19	48.1 (3.2)	45.6 (8.0)	0.001	0.007
Cortical gray matter	102.8 (1.8)	112.7 (2.1)	0.003	0.478	37.4 (3.1)	40.5 (4.0)	0.001	0.007
DNGM	22.9 (0.3)	22.0 (0.4)	0.14	0.056	8.3 (0.6)	8.0 (0.7)	0.153	0.081
Cerebellum	16.9 (0.4)	16.6 (0.5)	0.125	0.156	6.3 (0.7)	5.9 (0.8)	0.029	0.626
Total tissue	279.9 (5.1)	270.1 (6.1)	0.945	0.260				
Gyrification Index								
Right hemisphere	1.81 (0.02)	1.76 (0.02)	0.804	0.061				
Left hemisphere	1.77 (0.02)	1.75 (0.02)	0.598	0.533				
Cortical surface area (cm <sup>2</sup> )								
Right hemisphere	251.0 (5.1)	249.1 (5.9)	0.543	0.815				
Left hemisphere	247.4 (4.9)	246.6 (5.9)	0.517	0.928				

Absolute volumes—estimated marginal means (SD), relative volumes—% [tissue type/TTV] (SD).

<sup>a</sup>Unadjusted.

<sup>b</sup>Adjusted for PMA, propensity score, and MRI brain injury.

<sup>c</sup>Adjusted for propensity score and MRI brain injury.



**Fig. 1** Tract-based spatial statistics (TBSS) results comparing infants who were and were not exposed to anesthesia during the neonatal period. Yellow and red tracts indicate decreased fractional anisotropy (FA) in anesthesia-exposed infants in cingulate gyrus and corpus callosum. Green tracts indicate no difference in FA ( $p < 0.05$ ).

correlation between either the PMA at which the first surgery was performed, or the time interval between first surgery and MRI being performed, and either the absolute tissue volumes, GIs, and CSAs (data not shown). The median duration of surgery was 148 min (IQR 63–244; Table 1). There was no correlation between duration of surgery and either the clinical propensity score ( $-0.297$ ,  $p = 0.15$ ) or the PMA at which surgery was performed ( $-0.14$ ,  $p = 0.5$ ). Infants were stratified into never required surgery during the neonatal period ( $n = 59$ ), surgical duration below the median ( $n = 12$ ), and surgical duration above the median ( $n = 13$ ). Most infants received a combination of anesthetic agents, with the most common agents including a flurane-based inhaled anesthetic and fentanyl (Table 1). However, there were multiple additional agents used, reflecting a wide range in practice. Owing to this variation, further analysis of the impact of the specific type of anesthetic agent was not performed.

Surgery requiring general anesthesia during the preterm period and quantitative MRI measures at TEA  
Linear mixed models demonstrated that surgical anesthesia exposure during the preterm period was associated with a

decrease in the relative white matter volume ( $p = 0.007$ ) and an increase in the relative cortical gray matter volume ( $p = 0.007$ ) (Table 2). There was no difference in other relative tissue volumes, any of the absolute tissue volumes, cerebellar volume, GI, or CSA between those who were and were not exposed (Table 2).

TBSS analysis demonstrated significantly lower FA values in the corpus callosum and cingulum bundle infants exposed to surgery during the preterm period compared to infants who were not exposed ( $p < 0.05$ ; Fig. 1).

*Duration of exposure.* Linear mixed models showed that decreased relative white matter volumes were associated with a longer duration of surgery ( $p = 0.002$ ; Table 3). On post hoc analysis, the difference in relative white matter volumes remained significant between those who had surgical duration above the median and both those who had no surgery ( $p = 0.001$ ) and those below the median surgical duration ( $p = 0.02$ ), respectively. Differences in relative white matter volumes between infants with shorter surgical duration and those who had no surgery did not reach statistical significance ( $p = 0.58$ ).



**Table 3.** Effect of surgical duration on volumetric and cortical surface measures.

	Surgical duration			<i>p</i> <sup>a</sup>	<i>p</i> <sup>b</sup>	Surgical duration			<i>p</i> <sup>a</sup>	<i>p</i> <sup>c</sup>
	No surgery	Below median	Above median			No surgery	Below median	Above median		
	Absolute volumes					Relative volumes (%)				
Tissue volumes (cm <sup>3</sup> )										
White matter	133.2 (1.7)	130.9 (3.0)	121.5 (2.7)	0.112	0.290	48.1 (3.2)	47.0 (2.4)	44.2 (3.7)	0.001	0.002
Cortical gray matter	104.9 (1.7)	107.8 (2.9)	117.3 (2.9)	<0.001	0.128	37.4 (3.1)	38.6 (2.7)	42.3 (4.3)	<0.001	0.001
DNGM	22.9 (0.3)	22.4 (0.6)	21.5 (0.6)	0.281	0.161	8.3 (.6)	8.4 (0.7)	7.7 (0.7)	0.042	0.028
Cerebellum	16.9 (0.4)	17.1 (0.7)	16.2 (0.7)	0.260	0.241	6.3 (.7)	5.9 (.8)	5.8 (1.0)	0.076	0.732
Total tissue	279.8 (5.1)	263.2 (8.2)	278.8 (9.2)	0.062	0.244					
Gyrification Index										
Right hemisphere	1.82 (0.02)	1.79 (0.04)	1.73 (0.03)	0.457	0.077					
Left hemisphere	1.77 (0.19)	1.79 (0.03)	1.71 (0.03)	0.481	0.228					
Cortical surface area (cm <sup>2</sup> )										
Right hemisphere	250.9 (5.1)	240.6 (9.2)	256.3 (8.5)	0.011	0.484					
Left hemisphere	247.0 (4.9)	240.8 (8.6)	252.6 (8.5)	0.011	0.669					

Absolute volumes—estimated marginal means (SD), relative volumes—% [tissue type/TTV] (SD).  
<sup>a</sup>Unadjusted.  
<sup>b</sup>Adjusted for PMA, propensity score, and MRI brain injury.  
<sup>c</sup>Adjusted for propensity score and MRI brain injury.

**Table 4.** Association between surgical anesthesia and 2-year neurodevelopmental outcome.

Bayley-III	No anesthesia	Anesthesia	<i>p</i>
Cognitive composite	89.4 (2.1)	75.6 (3.9)	0.002
Language composite	89.4 (2.6)	80.1 (4.9)	0.09
Motor composite	86.7 (2.3)	73.5 (4.0)	0.005

Estimated marginal means and standard error from linear mixed models for 2 year follow-up adjusted for propensity score, moderate/severe MRI abnormality, anesthetic exposure post NICU discharge and Sociodemographic Risk Index.

Relative cortical gray matter volumes demonstrated the opposite pattern, showing a positive linear relationship to the duration of surgery (Table 3). Further analysis of the cortical gray matter volumes showed that the differences remained significant between those who had surgical duration above the median duration and both those who had no surgery ( $p < 0.001$ ) and those below the median surgical duration ( $p = 0.008$ ), respectively. There was again no difference in relative cortical gray matter volume between those who had no surgery and those whose surgical duration was less than the median duration ( $p = 0.58$ ).

Lastly, there was a difference in the relative deep nuclear grey matter volumes, with decreased volumes associated with longer surgical duration ( $p = 0.028$ ). Post hoc analysis demonstrated that this effect was mediated by prolonged surgical exposure. Infants who had a surgical duration above the median had decreased relative volumes compared to those who had no surgical exposure ( $p = 0.013$ ) and those with a surgical duration below the median ( $p = 0.04$ ). There was no difference between those with no surgical exposure and those with surgical duration below the median ( $p = 0.9$ ).

Surgery requiring general anesthesia during the preterm period and neurodevelopmental outcomes at 2 years

The mean cognitive composite score on the Bayley-III at age 2 years in the cohort was 86.3 (SD ±9.3), language composite score was 88.8 (±11.2), and motor composite score was 83.9 (±10.8). Multivariable

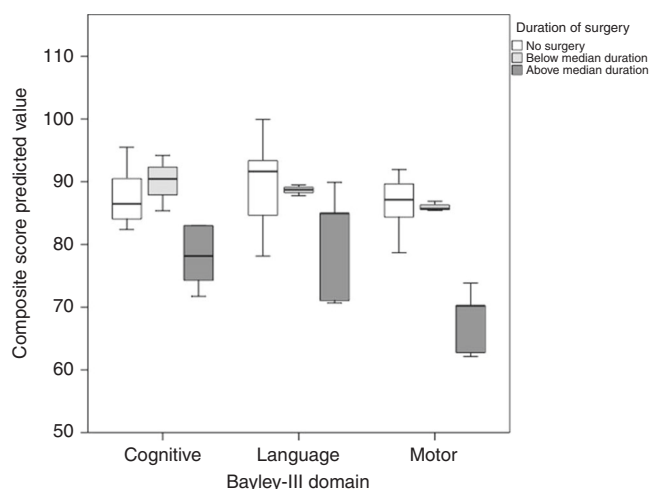
models adjusting for the clinical propensity score, cerebral injury, and Sociodemographic Risk Index were developed to explore the effect of exposure to surgery requiring anesthesia on neurodevelopmental outcome. These models demonstrated that surgical exposure during the preterm period was associated with lower cognitive ( $p = 0.002$ ) and motor composite scores ( $p = 0.005$ ), with a trend toward lower language composite scores ( $p = 0.09$ ) (Table 4).

Stratifying by duration of surgery, there was an association between longer surgical duration and lower cognitive ( $p = 0.001$ ) and motor composite scores ( $p = 0.001$ ) but not language scores ( $p = 0.2$ ). Post hoc analysis demonstrated that the differences in cognitive scores remained significant only for infants with longer surgical duration compared to no exposure ( $p = 0.001$ ). Post hoc analysis of the motor composite scores found that infants with longer surgical duration had lower scores than both those with no exposure ( $p = 0.001$ ) or infants with shorter surgical duration ( $p = 0.017$ ) (Fig. 2).

To assess whether either the reduced relative white matter or increased cortical gray matter on MRI at TEA explained the neurodevelopmental findings, the analysis was rerun adding these variables as covariates in the mixed models. Addition of these quantitative MRI metrics did not significantly alter the results; the cognitive composite score and motor composite score remained lower in those who were exposed to anesthesia ( $p = 0.005$  and  $p = 0.004$ , respectively) and continued to be negatively associated with duration of exposure ( $p = 0.008$  and  $p = 0.001$ , respectively).

## DISCUSSION

This study described an association between exposure to surgery requiring general anesthesia during the preterm period with both alterations in brain development at TEA and cognitive and motor deficits at age 2 years. Infants with longer exposures had the greatest relative changes in white and gray matter volumes and lowest cognitive and motor scores during early childhood. This association with the brain tissue volumes was only significant when comparing relative volumes. This indicates a range in the vulnerability of brain tissue types, with the white and cortical gray matter demonstrating increased susceptibility. Interestingly, controlling for the MRI findings, surgical anesthetic exposure continued to be associated with cognitive and motor deficits at



**Fig. 2 Association between duration of surgery and age 2-year neurodevelopmental outcomes.** Boxplots showing no anesthetic exposure in neonatal period (white), surgical duration less than median duration (gray), and surgical duration greater than the median duration (black).

age 2 years. This suggests that the adverse outcome observed is not fully explained by current neuroimaging methods of delineating cerebral injury or altered volumes at TEA but rather a more complex alteration in neural development.

The infants who required surgery had a lower GA and higher incidence of the complications of prematurity than those who did not require surgical intervention. This is to be expected; however, these factors could potentially confound the results and therefore needed to be controlled for in the analysis. To achieve this, we included a clinical propensity score, presence of MRI injury, and Sociodemographic Risk Index as covariates in our models. These incorporated the baseline risks prior to, and independent of, surgery into the models. Controlling for these variables, the impact of the exposure remained significant. In addition, there was no correlation between the duration of surgery and either the propensity score or social risk index. Despite this, infants with the longest surgical duration demonstrated the greatest alteration in brain volumes and worst neurodevelopmental outcome. This further suggests that the altered brain volumes and neurodevelopmental outcome we described were associated with the period of surgery itself.

There has been increasing concern about the exposure of the developing brain to both surgery and anesthesia over the past decade. Animal models have demonstrated the potential neurotoxic effect of a range of anesthetic agents on the developing brain.<sup>5,23–26</sup> The exact mechanism of injury is likely multimodal<sup>24,27</sup> and appears to be selective to the immature brain.<sup>27,28</sup> In particular, the immature oligodendrocyte appears to be sensitive to the direct neurotoxic effects of anesthetics.<sup>5,29</sup> In the preterm infant, the immature oligodendrocyte is known to be exquisitely vulnerable to inflammatory-mediated injury, likely compounding the injury further.<sup>30–32</sup> A reduction in mature oligodendrocytes, either through direct neurotoxic effects or secondary to proinflammatory injury, would be consistent with the reductions in white matter volumes and alterations in white matter microstructure in the cingulum and corpus callosum demonstrated in the current study.

Studies looking at the associations between pediatric surgery, anesthesia, and neurodevelopmental outcomes have typically been performed on older children, who underwent surgery after the neonatal period.<sup>1,2,6,7</sup> However, two recent studies exclusively looked at neonatal surgery and demonstrated an association with both cerebral injuries<sup>12</sup> and delayed cerebral maturation.<sup>3</sup> Stolwijk

et al. reported that 75% of preterm infants (median GA at birth 34 weeks) demonstrated mild-to-moderate MRI injury postoperatively. In an alternate study, Moran et al. looked at the term equivalent MRI and 2-year neurodevelopmental outcome of infants who underwent non-cardiac surgery. The median GA at birth was 37.8 weeks. Infants exposed to surgery had increased white matter injury on MRI (median age at scan was 25 days) and lower motor and language composite scores at age 2 years. Interestingly, despite the short time interval between surgery and MRI (<4 weeks) they found that surgery was associated with significantly delayed gyral maturation. The cohorts in these studies are, however, different to our own, as VPT infants were not included in their respective studies.

There is limited published data regarding anesthesia exposure in preterm infants. In a large cohort of VPT infants, Morriss et al. reported that infants who underwent surgery during the initial hospitalization had lower mean Mental Developmental Index and Psychomotor Developmental Index scores at 18–24 months of age on the Bayley-II scales.<sup>10</sup> Interestingly, in a secondary analysis subdividing infants into those who required “major surgery” versus “minor surgery”, after controlling for clinical and social covariates, only “major surgery” exposure was associated with neurodevelopmental impairment. The authors postulated that this may reflect duration of surgery and/or anesthetic exposure, as all major surgeries would have required general anesthesia, while the minor surgeries may have been performed under regional anesthesia. In a smaller cohort, Filan et al. compared the TEA brain volumes of preterm infants who underwent surgery to those who did not.<sup>11</sup> The authors demonstrated that infants who underwent surgery during the preterm period had reductions in deep nuclear gray volumes, with increased white matter injury on TEA MRI scans. These findings are in keeping with the current study, which demonstrated reductions in relative deep nuclear gray volumes at TEA among those with the longest surgical duration. Filan et al. postulated that the alterations in brain growth described may have been associated with exposure to anesthesia in the surgical subgroup, pointing out that the original Food and Drug Administration warning had highlighted concerns over reduced deep nuclear gray matter volumes associated with certain anesthetic agents. Data on the actual anesthetic agent used, or level of exposure, was not available in either of these studies.

The only prior study of preterm infants that provided any data on anesthetic exposure during the preterm period was that of Gano et al.<sup>33</sup> They reported on a cohort of infants born <33 weeks’ gestation who underwent surgery prior to TEA. These infants were followed to school age, and their outcome was assessed using the Wechsler Preschool and Primary Scale of Intelligence, Third edition. Gano et al. reported that undergoing two or more surgical procedures prior to TEA was associated with adverse neurodevelopmental outcome with a 20-point lower full scale intelligence quotient compared to infants who had no surgical exposure. The authors also noted that a single surgical exposure was not associated with any adverse neurodevelopmental outcome. It is important to note that there were some differences between the current cohort and that of Gano et al. The first is that there was a variation in which agents infants were exposed to, with only 25% of Gano et al. cohort being exposed to a volatile anesthetic agent, contrasting with 60% in the current study. Second, the median surgical duration in the Gano et al. study was 80 min as compared to 190 min in the current study. Although neither study could report on the cumulative anesthetic dose, the disparity in surgical duration between the cohorts may imply a considerable difference in the associated anesthetic exposure. It must be emphasized, however, that, while there are some differences between populations and results, ultimately both the current study and that of Gano et al. the only studies to date of surgical anesthetic exposure in the preterm period, demonstrated

an association between longer surgical anesthetic exposure and lower neurodevelopmental scores.

The current study also reported an increase in cortical gray matter volumes, which may appear paradoxical. One potential explanation is that these findings may reflect altered brain development in regions such as the subventricular zone, which is known to be a vulnerable region in the immature brain and is responsible for late neuronal migration.<sup>32,34</sup> These late migrating neurons are important contributors to cortical thickness. Moeskops et al. recently reported serial MRI scans at 30 and 40 weeks' PMA on a cohort of extremely low birth weight infants (not exposed to anesthesia).<sup>35</sup> They found that at 30 weeks there was no correlation between cerebral atrophy and cortical indices; however, by 40 weeks a significant association had developed. Specifically, they found that increased cerebral atrophy was positively correlated with an increase of both cortical thickness and cortical gray matter volumes. The authors proposed that these counter-intuitive findings represented altered brain development secondary to a combination of injury to the premyelinating oligodendrocytes and disrupted migration of the late migrating GABAergic neurons. This, they suggested, would result in a reduced distinction between the unmyelinated white matter and cortical gray matter, leading to the increased cortical indices. The current study reported a similar pattern on TEA MRI. Therefore, it is plausible that surgical anesthetic exposure impacts the premature brain through a combination of both injury to the white matter and disruption to neuronal migration. Disruption to neuronal migration could in part explain why the differences between groups for neurodevelopmental outcome remained after controlling for the altered regional volumes on TEA MRI.

A limitation of the current study was that, while only VPT infants were included, there were significant differences between the infants who required surgery and those who did not. VPT infants of lower GA are not only at higher risk for surgery than those at a higher GA but also have a higher independent risk of having the common co-morbidities of prematurity than their older counterparts. This is an issue that each of the studies discussed above, which investigated the association between surgery and outcome in VPT infants, have reported. Similar to the current study, these previous papers reported that VPT infants requiring surgery had a significantly lower GA<sup>10,33</sup> and smaller birth weight<sup>10,11</sup> and additionally had a higher incidence of the complications of prematurity including sepsis,<sup>10,33</sup> bronchopulmonary dysplasia,<sup>10,11,33</sup> and PDAs,<sup>10,33</sup> compared to their non-surgical populations. These are important confounding variables, which, similar to previous studies, we have attempted to control for in our models. However, the authors cannot exclude the possibility of unrecognized events such as subtle perturbation of physiological homeostasis during the NICU course or during transfer to the operating room that could also contribute to alterations in brain development and neurodevelopmental impairment. Certain surgical procedures can be safely performed in the NICU rather than in the operating room.<sup>36</sup> Such an approach could reduce the potential for unrecognized physiological disturbances by negating the need for transport; however, this is not the standard of care in our unit. These limitations prevent us moving beyond describing an observed association.

As the median PMA at time of surgery was 27 weeks, preoperative imaging was confined to cranial ultrasound. Cranial ultrasound imaging is not directly comparable to MRI imaging, and therefore without preoperative MR imaging, we cannot exclude the possibility that some of the MRI injuries described were present preoperatively. Further limitations include the retrospective nature of the analysis, a small sample size of VPT infants who underwent surgery, and that we were unable to provide data on the use of opiates for sedation during the time in the NICU. However, recent work has clearly shown that opiate exposure in the preterm infant in particular impacts the cerebellum, leading to decreased volumes at TEA.<sup>37,38</sup> There was

no apparent effect of the surgical anesthesia on cerebellar volumes in our cohort. This would suggest that the impact of surgical anesthesia described here may be mediated by a different pathway than that found in pure opiate exposure.

In conclusion, this retrospective analysis found that VPT infants who required surgery during the preterm period had reduced white matter volumes at TEA and lower cognitive and motor composite scores at 2 years. Our results support previous publications in the field; however, the underlying pathophysiology for these findings remains unclear. Further research is required to explore potential mechanisms for the associations described.

## ACKNOWLEDGEMENTS

We thank Dr. Regina Triplett for her assistance in qualitative interpretation of the MR images. This work was supported by the Eunice Kennedy Shriver National Institute Of Child Health & Human Development with Awards U54 HD087011 (Intellectual and Developmental Disabilities Research Center at Washington University (to J.S.S.)) and R01 HD 057098 (original WUNDER cohort grant); K02 NS089852 and UL1 TR000448.

## AUTHOR CONTRIBUTIONS

Substantial contributions to conception and design, acquisition of data, or analysis and interpretation of data; drafting the article or revising it critically for important intellectual content; and final approval of the version to be published: all authors.

## ADDITIONAL INFORMATION

The online version of this article (<https://doi.org/10.1038/s41390-020-1030-3>) contains supplementary material, which is available to authorized users.

**Competing interests:** The authors declare no competing interests.

**Consent:** The study was approved by the Washington University Human Research Protection Office. Parental informed consent was obtained for each subject prior to enrollment.

**Publisher's note** Springer Nature remains neutral with regard to jurisdictional claims in published maps and institutional affiliations.

## REFERENCES

1. Wilder, R. T. et al. Early exposure to anesthesia and learning disabilities in a population-based birth cohort. *Anesthesiology* **110**, 796–804 (2009).
2. Flick, R. P. et al. Cognitive and behavioral outcomes after early exposure to anesthesia and surgery. *Pediatrics* **128**, e1053–e1061 (2011).
3. Moran, M. M. et al. Associations of neonatal noncardiac surgery with brain structure and neurodevelopment: a prospective case-control study. *J. Pediatr.* **212**, 93.e2–101.e2 (2019).
4. Sanders, R. D., Hassell, J., Davidson, A. J., Robertson, N. J. & Ma, D. Impact of anaesthetics and surgery on neurodevelopment: an update. *Br. J. Anaesth.* **110**, i53–i72 (2013).
5. Brambrink, A. M. et al. Isoflurane-induced apoptosis of oligodendrocytes in the neonatal primate brain. *Ann. Neurol.* **72**, 525–535 (2012).
6. Sun, L. S. et al. Association between a single general anesthesia exposure before age 36 months and neurocognitive outcomes in later childhood. *JAMA* **315**, 2312–2320 (2016).
7. Davidson, A. J. et al. Neurodevelopmental outcome at 2 years of age after general anaesthesia and awake-regional anaesthesia in infancy (GAS): an international multicentre, randomised controlled trial. *Lancet* **387**, 239–250 (2016).
8. Rizzi, S., Ori, C. & Jevtovic-Todorovic, V. Timing versus duration: determinants of anesthesia-induced developmental apoptosis in the young mammalian brain. *Ann. NY Acad. Sci.* **1199**, 43–51 (2010).
9. Andescavage, N. N. et al. Complex trajectories of brain development in the healthy human fetus. *Cereb. Cortex* **27**, 5274–5283 (2017).
10. Filan, P. M., Hunt, R. W., Anderson, P. J., Doyle, L. W. & Inder, T. E. Neurologic outcomes in very preterm infants undergoing surgery. *J. Pediatr.* **160**, 409–414 (2012).
11. Morriss, F. H. Jr et al. Surgery and neurodevelopmental outcome of very low-birth-weight infants. *JAMA Pediatr.* **168**, 746–754 (2014).
12. Stolwijk, L. J. et al. Neonatal surgery for noncardiac congenital anomalies: neonates at risk of brain injury. *J. Pediatr.* **182**, 335.e1–341.e1 (2017).

13. Mathur, A. M., Neil, J. J., McKinstry, R. C. & Inder, T. E. Transport, monitoring, and successful brain MR imaging in unsedated neonates. *Pediatr. Radiol.* **38**, 260–264 (2008).
14. Kidokoro, H., Neil, J. J. & Inder, T. E. New MR imaging assessment tool to define brain abnormalities in very preterm infants at term. *AJNR Am. J. Neuroradiol.* **34**, 2208–2214 (2013).
15. Klein, A. et al. Evaluation of volume-based and surface-based brain image registration methods. *Neuroimage* **51**, 214–220 (2010).
16. Van Essen, D. C. et al. An integrated software suite for surface-based analyses of cerebral cortex. *J. Am. Med. Inf. Assoc.* **8**, 443–459 (2001).
17. Hill, J. et al. A surface-based analysis of hemispheric asymmetries and folding of cerebral cortex in term-born human infants. *J. Neurosci.* **30**, 2268–2276 (2010).
18. Smith, S. M. et al. Tract-based spatial statistics: voxelwise analysis of multi-subject diffusion data. *Neuroimage* **3**, 1487–1505 (2006).
19. Lean, R. E., Paul, R. A., Smyser, C. D. & Rogers, C. E. Maternal intelligence quotient (IQ) predicts IQ and language in very preterm children at age 5 years. *J. Child Psychol. Psychiatry* **59**, 150–159 (2018).
20. Lean, R. E., Paul, R. A., Smyser, T. A., Smyser, C. D. & Rogers, C. E. Social adversity and cognitive, language, and motor development of very preterm children from 2 to 5 years of age. *J. Pediatr.* **203**, 177.e1–184.e1 (2018).
21. Lean, R. E. et al. Maternal and family factors differentiate profiles of psychiatric impairments in very preterm children at age 5-years. *J. Child Psychol. Psychiatry* **6**, 157–166 (2020).
22. Matthews, L. G. et al. Brain growth in the NICU: critical periods of tissue-specific expansion. *Pediatr. Res.* **83**, 976–981 (2018).
23. Makaryus, R. et al. Brain maturation in neonatal rodents is impeded by sevoflurane anesthesia. *Anesthesiology* **123**, 557–568 (2015).
24. Broad, K. D. et al. Isoflurane exposure induces cell death, microglial activation and modifies the expression of genes supporting neurodevelopment and cognitive function in the male newborn piglet brain. *PLoS ONE* **11**, e0166784 (2016).
25. Jevtovic-Todorovic, V. et al. Early exposure to common anesthetic agents causes widespread neurodegeneration in the developing rat brain and persistent learning deficits. *J. Neurosci.* **23**, 876–882 (2003).
26. Fredriksson, A., Pontén, E., Gordh, T. & Eriksson, P. Neonatal exposure to a combination of *N*-methyl-D-aspartate and gamma-aminobutyric acid type A receptor anesthetic agents potentiates apoptotic neurodegeneration and persistent behavioral deficits. *Anesthesiology* **107**, 427–436 (2007).
27. Stratmann, G. et al. Isoflurane differentially affects neurogenesis and long-term neurocognitive function in 60-day-old and 7-day-old rats. *Anesthesiology* **110**, 834–848 (2009).
28. Deng, M. et al. Brain regional vulnerability to anaesthesia-induced neuroapoptosis shifts with age at exposure and extends into adulthood for some regions. *Br. J. Anaesth.* **113**, 443–451 (2014).
29. Ing, C. et al. Latent class analysis of neurodevelopmental deficit after exposure to anesthesia in early childhood. *J. Neurosurg. Anesthesiol.* **29**, 264–273 (2017).
30. Dammann, O. & Leviton, A. Maternal intrauterine infection, cytokines, and brain damage in the preterm newborn. *Pediatr. Res.* **42**, 1–8 (1997).
31. Lodygensky, G. A. et al. In vivo MRI analysis of an inflammatory injury in the developing brain. *Brain Behav. Immun.* **24**, 759–767 (2010).
32. Volpe, J. J. Brain injury in premature infants: a complex amalgam of destructive and developmental disturbances. *Lancet Neurol.* **8**, 110–124 (2009).
33. Gano, D. et al. Impaired cognitive performance in premature newborns with two or more surgeries prior to term-equivalent age. *Pediatr. Res.* **78**, 323–329 (2015).
34. Xu, G. et al. Late development of the GABAergic system in the human cerebral cortex and white matter. *J. Neuropathol. Exp. Neurol.* **70**, 841–858 (2011).
35. Moeskops, P. et al. Development of cortical morphology evaluated with longitudinal MR brain images of preterm infants. *PLoS ONE* **10**, e0131552 (2015).
36. Sinha, S. K. and Neogi, S. Bedside neonatal intensive care unit surgery - myth or reality! *J. Neonatal Surg.* **2**, 20 (2013).
37. Zwicker, J. G. et al. Smaller cerebellar growth and poorer neurodevelopmental outcomes in very preterm infants exposed to neonatal morphine. *J. Pediatr.* **172**, 81.e2–87.e2 (2016).
38. McPherson, C. et al. Brain injury and development in preterm infants exposed to fentanyl. *Ann. Pharmacother.* **49**, 1291–1297 (2015).